

V&V Reference Report

L2 ASCDS Version : 7.6.8

Observation 4199 - L2 Version 001
Chandra X-Ray Center

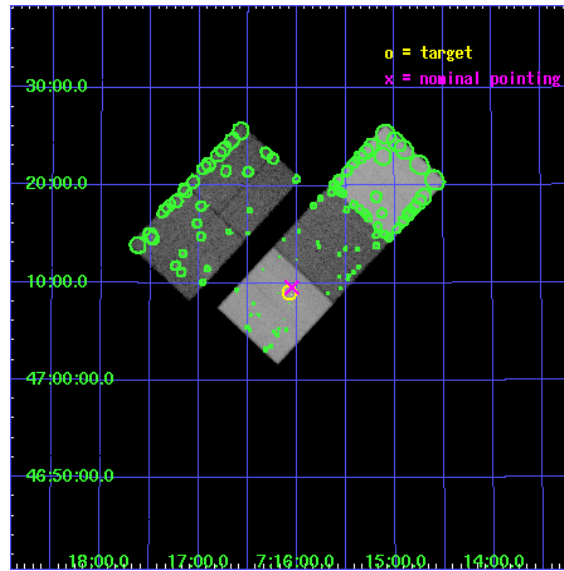
L2 Processing Date : Jun 23 2006

Contents

1	Front	2
2	OBI	3
2.1	OBI	3
2.1.1	Images	3
2.1.2	Bias	3
2.1.3	Parameters	4
2.1.4	Events	4
2.2	Compared Parameters	5
2.3	Aspect	6
2.4	Star Slots	9
2.4.1	Slot 3	9
2.4.2	Slot 4	10
2.4.3	Slot 5	11
2.4.4	Slot 6	12
2.4.5	Slot 7	13
2.5	FID Slots	14
2.5.1	Slot 0	14
2.5.2	Slot 1	15
2.5.3	Slot 2	16
3	Point Sources	17
A	Summary	18
A.1	Status	18
A.2	Comments	18

1 Front

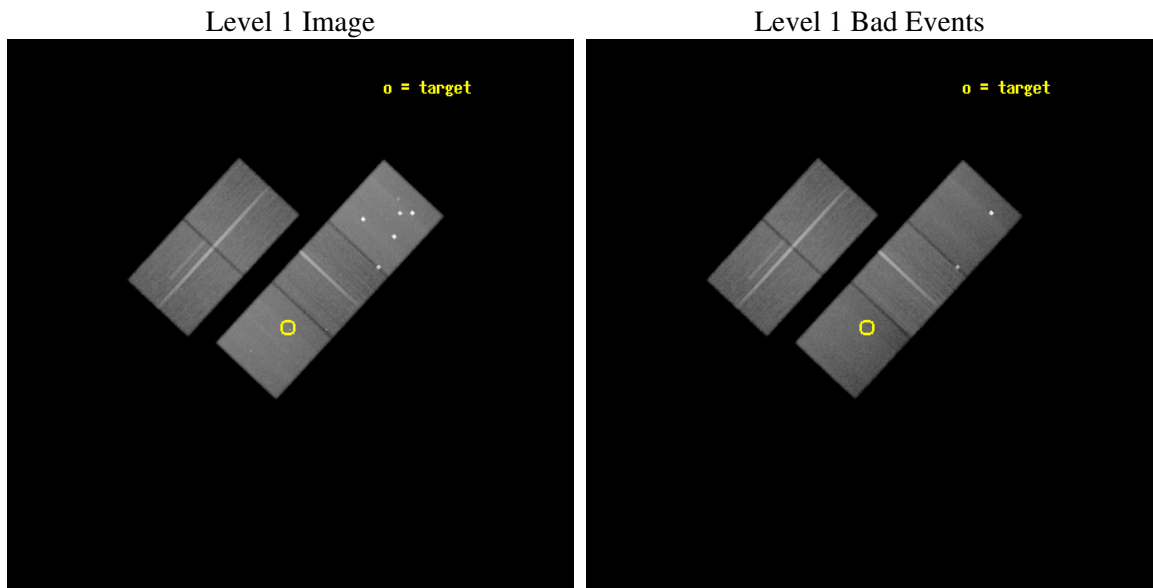
seq_num	800355
obs_id	4199
title	AN X-RAY STUDY OF A LENS-SELECTED GROUP OF GALAXIES AT Z=0.29
observer	Professor Christopher Fassnacht
object	CLASS B0712+472
dtcycle	0
cycle	P
ra_targ	109.020833
dec_targ	47.151361
ra_nom	109.01315116363
dec_nom	47.15947795769
roll_nom	132.86317733321
revision	2
ontime	99035.699809581
livetime	97741.725482547
ontime2	99032.558829337
ontime3	99029.417819172
ontime5	99035.699809581
ontime6	99026.276848942
ontime7	99035.699809581
l2events	649986



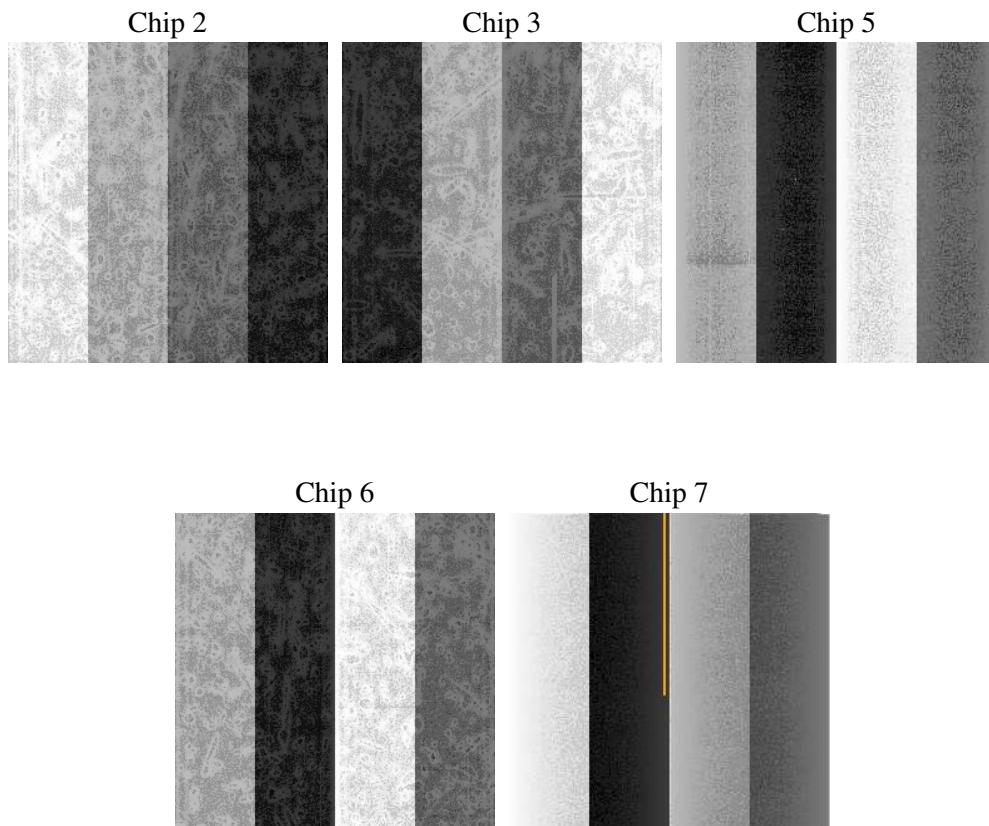
2 OBI

2.1 OBI

2.1.1 Images



2.1.2 Bias



2.1.3 Parameters

obi_num	0
ascdsver	7.6.8
caldbver	3.2.2
date	2006-06-23T23:34:06
revision	2

sched_exp_time	98909.000000
ontime	99325.059076428
ontime2	99321.918096185
ontime3	99318.77708602
ontime5	99325.059076428
ontime6	99315.636115789
ontime7	99325.059076428
l1events	2835592

2.1.4 Events

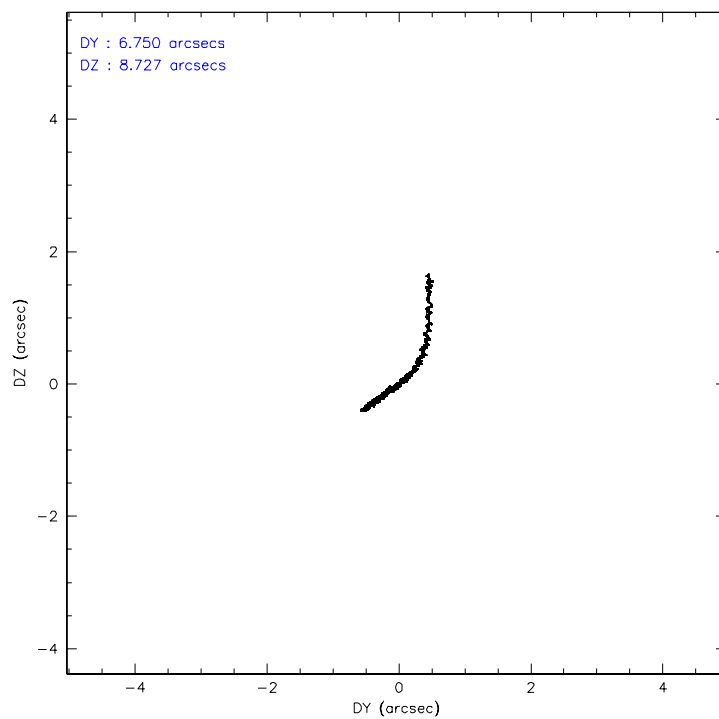
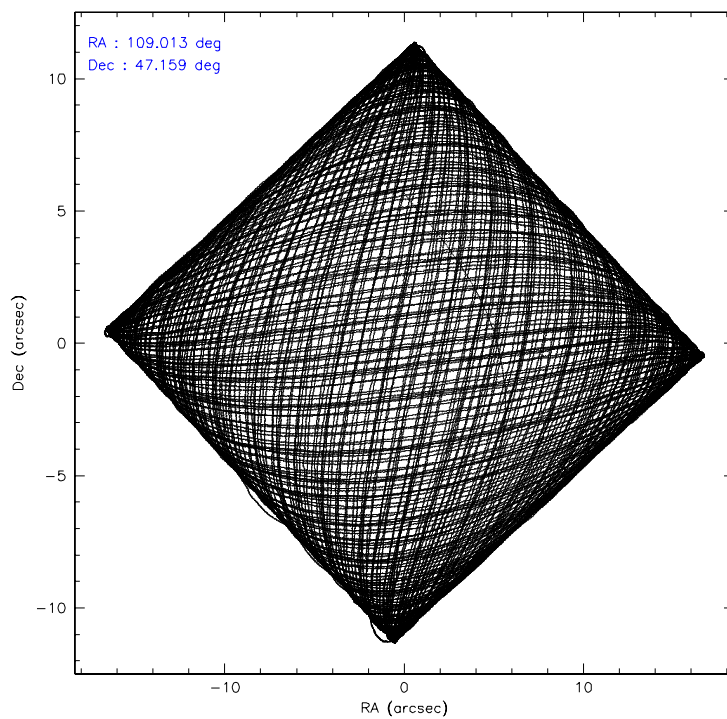
	ccd 2	ccd 3	ccd 5	ccd 6	ccd 7
level 1 events	504731	485698	777555	504909	562699
rejected events	456261	437488	388168	451615	329714
rejected %	90%	90%	49%	89%	58%

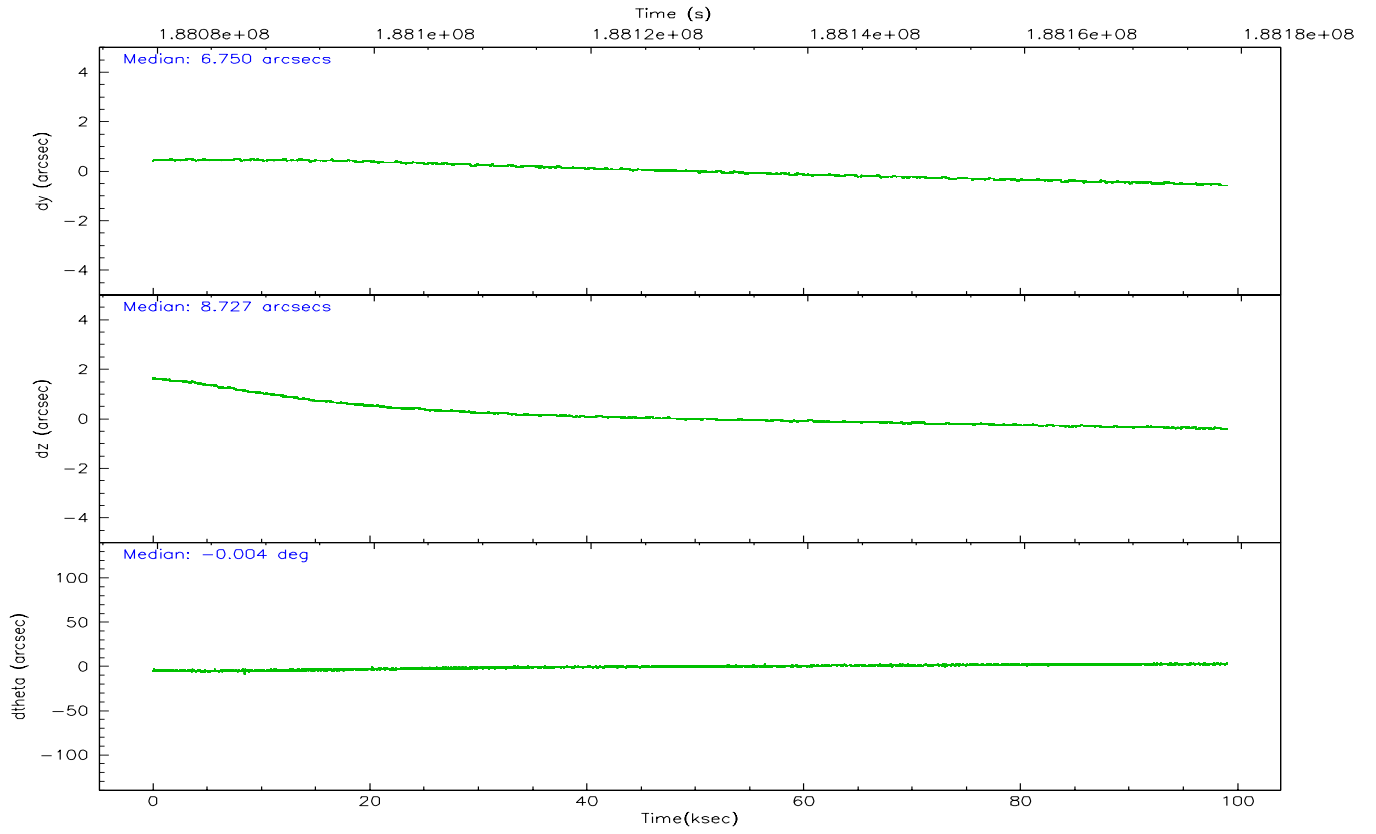
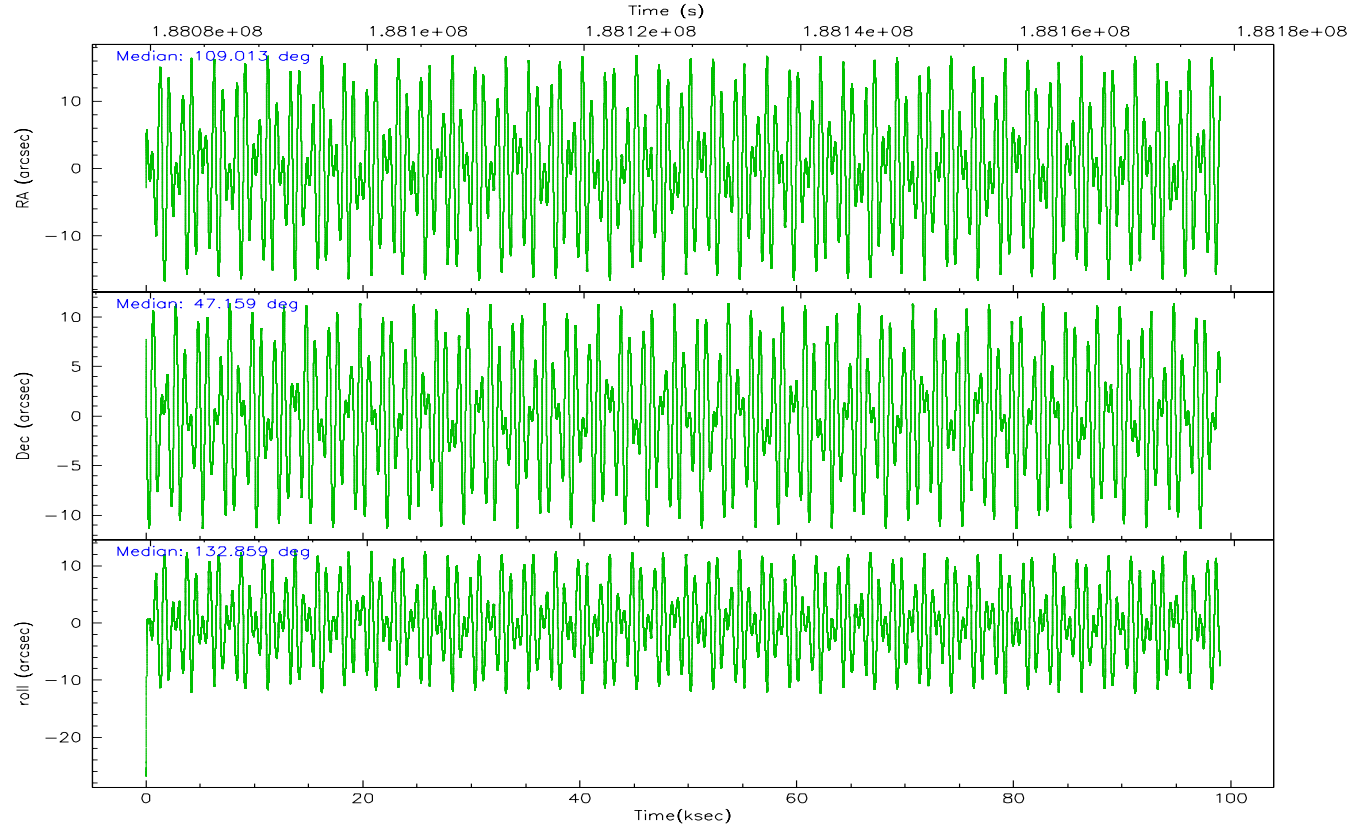
	ccd 2	ccd 3	ccd 5	ccd 6	ccd 7
grade 0 events	17476	17700	87952	18607	13480
	3%	3%	11%	3%	2%
grade 1 events	238	244	2463	213	298
	0%	0%	0%	0%	0%
grade 2 events	11144	10071	102704	11446	56822
	2%	2%	13%	2%	10%
grade 3 events	5510	5548	8872	6115	13565
	1%	1%	1%	1%	2%
grade 4 events	5611	5462	8666	5922	13251
	1%	1%	1%	1%	2%
grade 5 events	16844	19763	37835	20893	42356
	3%	4%	4%	4%	7%
grade 6 events	8896	9570	182273	11383	136580
	1%	1%	23%	2%	24%
grade 7 events	439012	417340	346790	430330	286347
	86%	85%	44%	85%	50%

2.2 Compared Parameters

Parameter	Planned	Actual	Parameter	Planned	Actual
Instrument	ACIS	ACIS	Obspar format version number	6	6
Detector	ACIS-23567	ACIS-23567	Obspar file type	PREDICTED	ACTUAL
Grating	NONE	NONE	Obspar update status	NONE	UPDATED
Data mode	VFAINT	VFAINT	On-chip summing requested	N	N
Observation mode	POINTING	POINTING	Subarray requested	NONE	NONE
Pointing RA	109.051556	109.0131511636278	Alternating exposures requested	N	N
Pointing Dec	47.151826	47.15947795768986	Primary exposure time	0.000000	3.1
Pointing Roll	132.678396	132.8631773332111			
SIM focus pos (mm)	-0.684267	-0.6828225247311905			
SIM defocus (mm)	0	0.001444936568705701			
SIM translation stage pos (mm)	-190.132523	-190.1400660498719			
SIM translation stage offset (mm)	0	0.00754346686406393			
Observation start time	188079753.184000	188078639.30725			
Observation start date	2003-12-17T20:21:29	2003-12-17T20:03:59			
Observation end time	188178662.184000	188179628.97413			
Observation end date	2003-12-18T23:49:58	2003-12-19T00:07:08			
Read mode	TIMED	TIMED			

2.3 Aspect



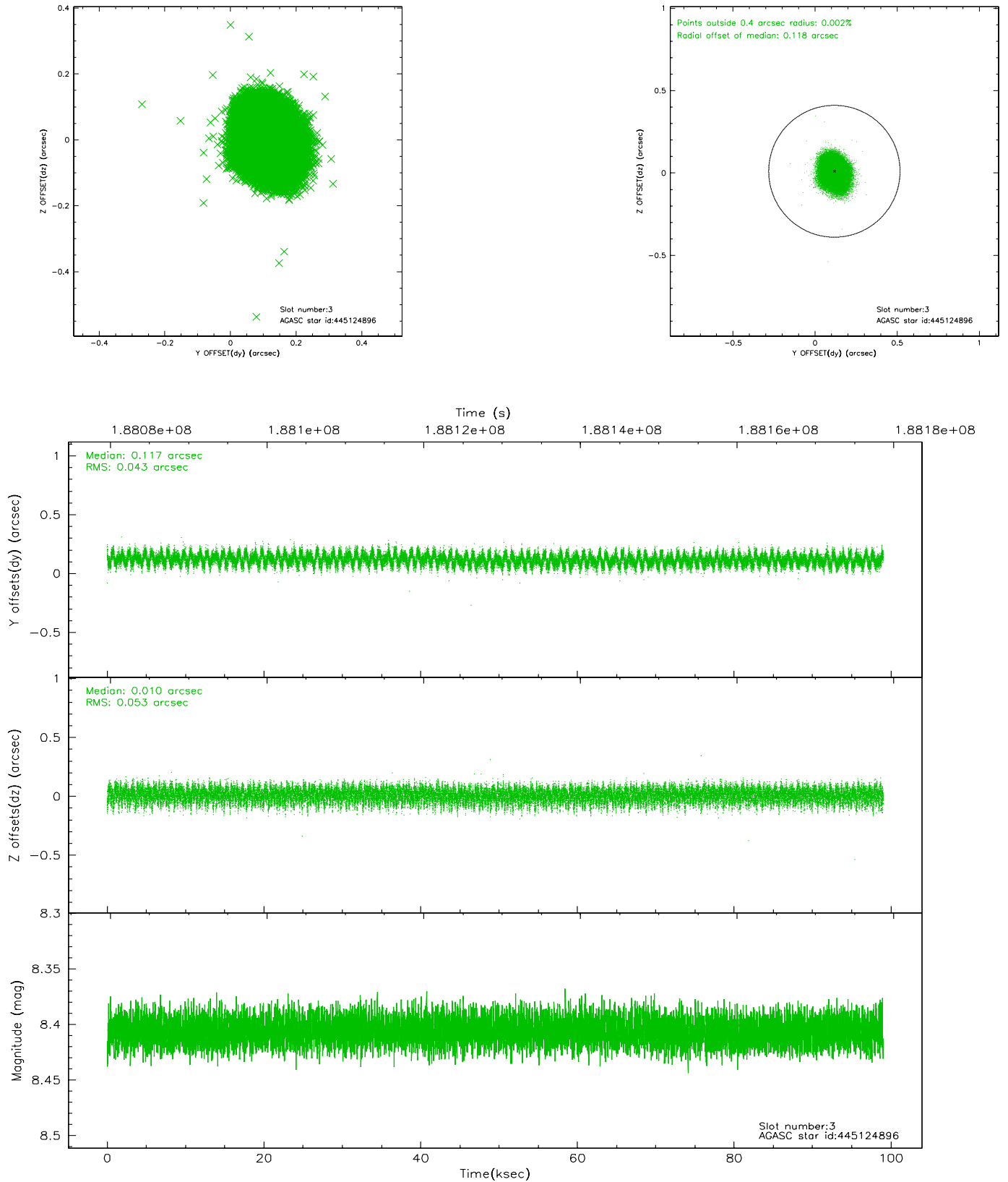


Slot Statistics

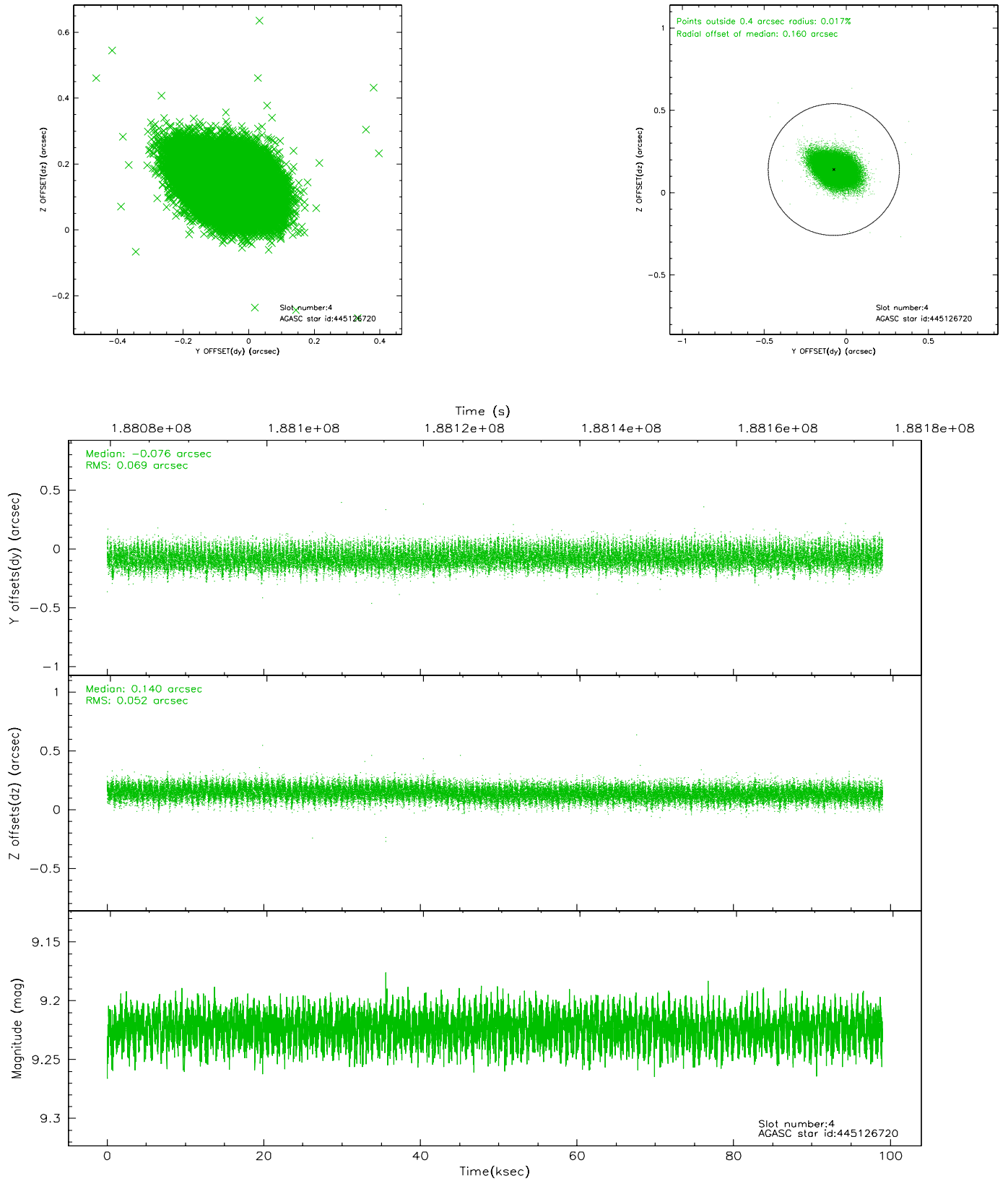
slot	status	id	mag	n_pts	med_dy	med_dz	dr1	dr2	ra	dec	mean_y	mean_z
0	FID	ACIS-S-1	7.18	24154	0.028	0.003	0.018	0.030	0.000000	0.000000	936.53	-1725.75
1	FID	ACIS-S-5	7.23	24155	-0.037	0.036	0.016	0.039	0.000000	0.000000	-1812.53	171.96
2	FID	ACIS-S-6	7.35	24157	-0.013	-0.028	0.011	0.032	0.000000	0.000000	402.19	815.73
3	GUIDE	445124896	8.41	48306	0.117	0.010	0.074	0.117	109.586875	47.275118	-555.95	-1264.93
4	GUIDE	445126720	9.22	48294	-0.076	0.140	0.091	0.152	109.219794	47.974353	1902.82	-2305.38
5	GUIDE	445130808	7.22	48313	-0.051	-0.106	0.076	0.114	108.405423	47.266746	1379.06	875.41
6	GUIDE	445133560	8.18	48310	-0.070	-0.090	0.056	0.088	108.392137	47.494954	2000.52	337.46
7	GUIDE	445263528	8.34	48307	0.077	0.046	0.072	0.111	109.978437	46.972243	-2008.61	-1244.25

2.4 Star Slots

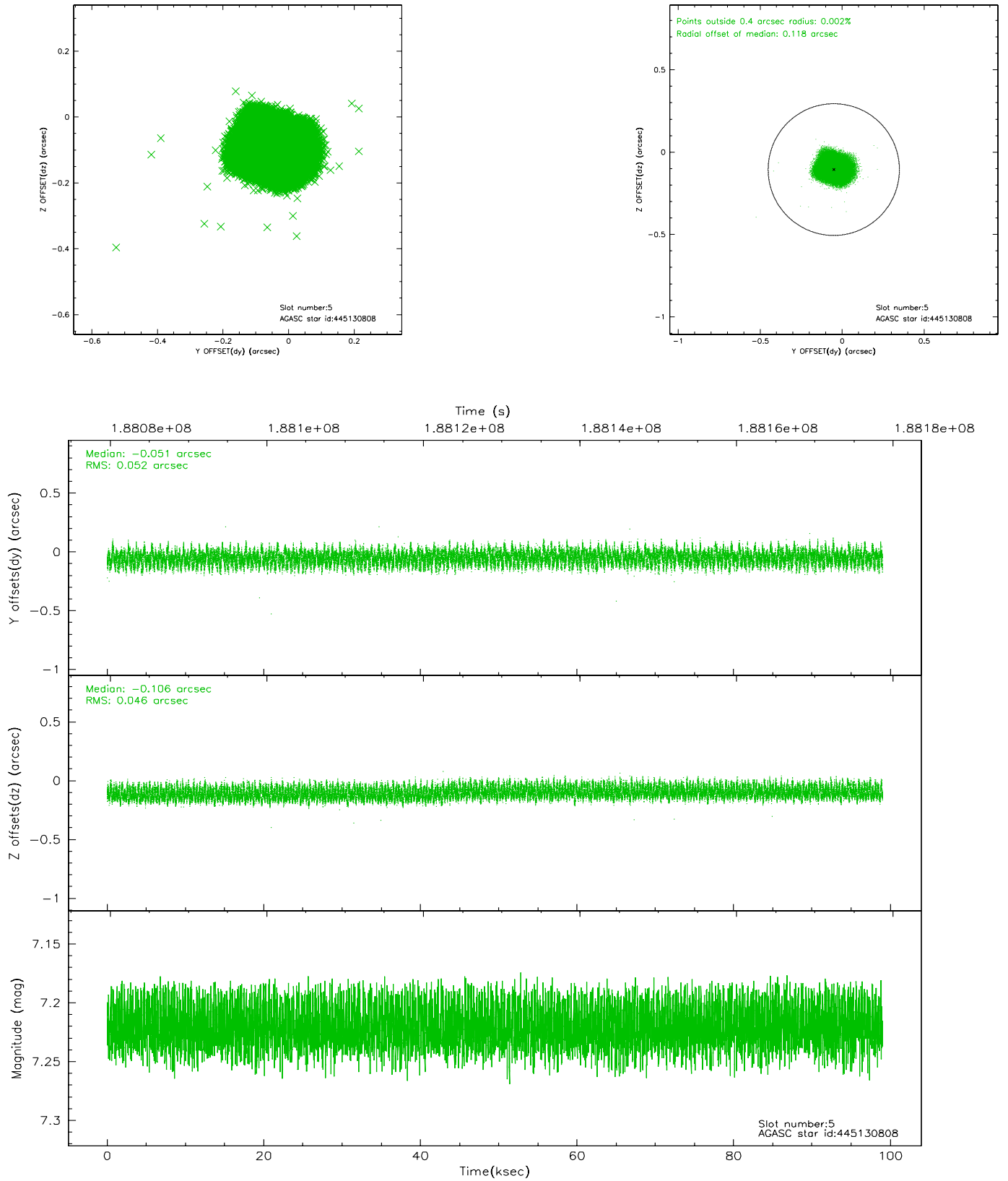
2.4.1 Slot 3



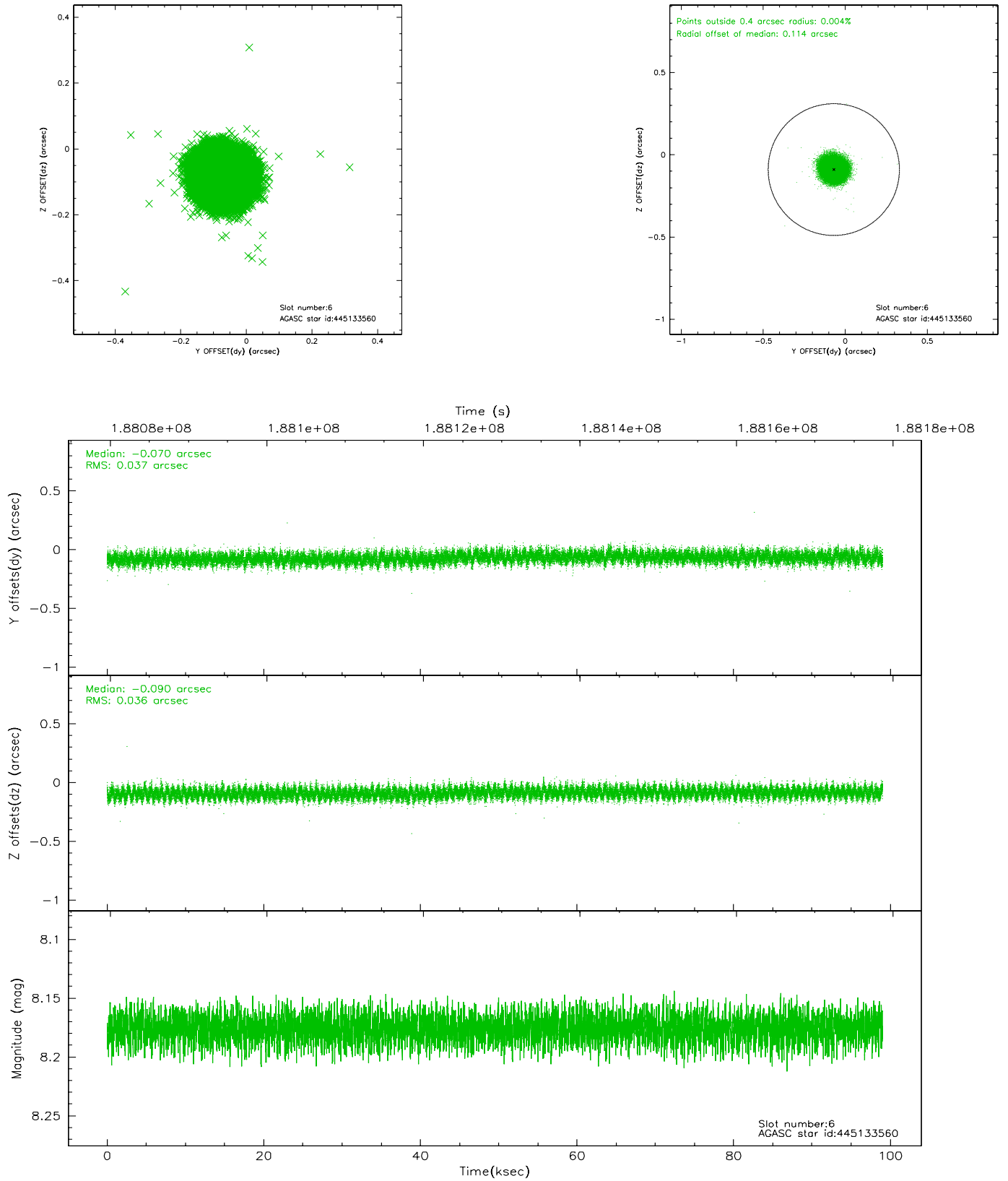
2.4.2 Slot 4



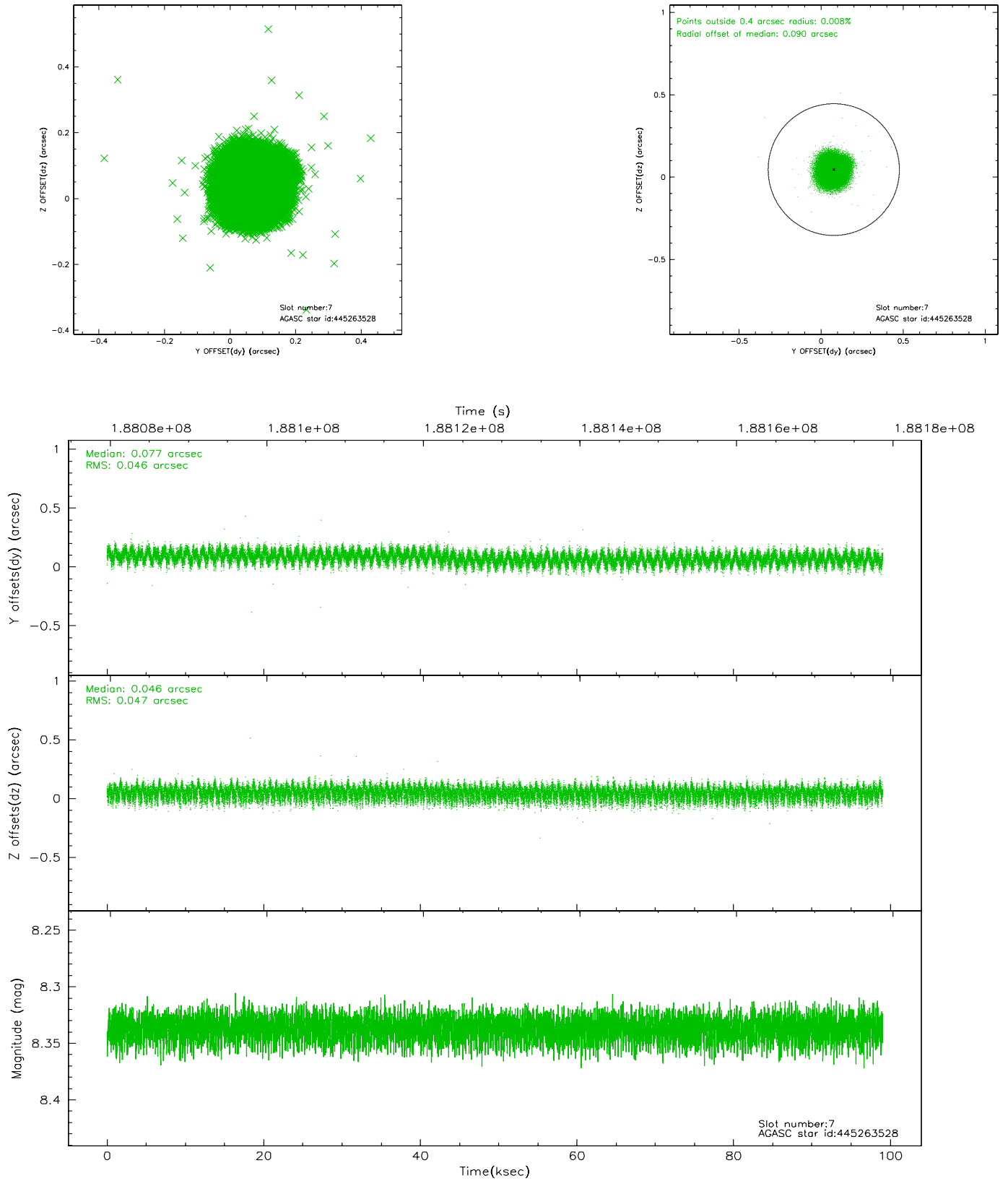
2.4.3 Slot 5



2.4.4 Slot 6

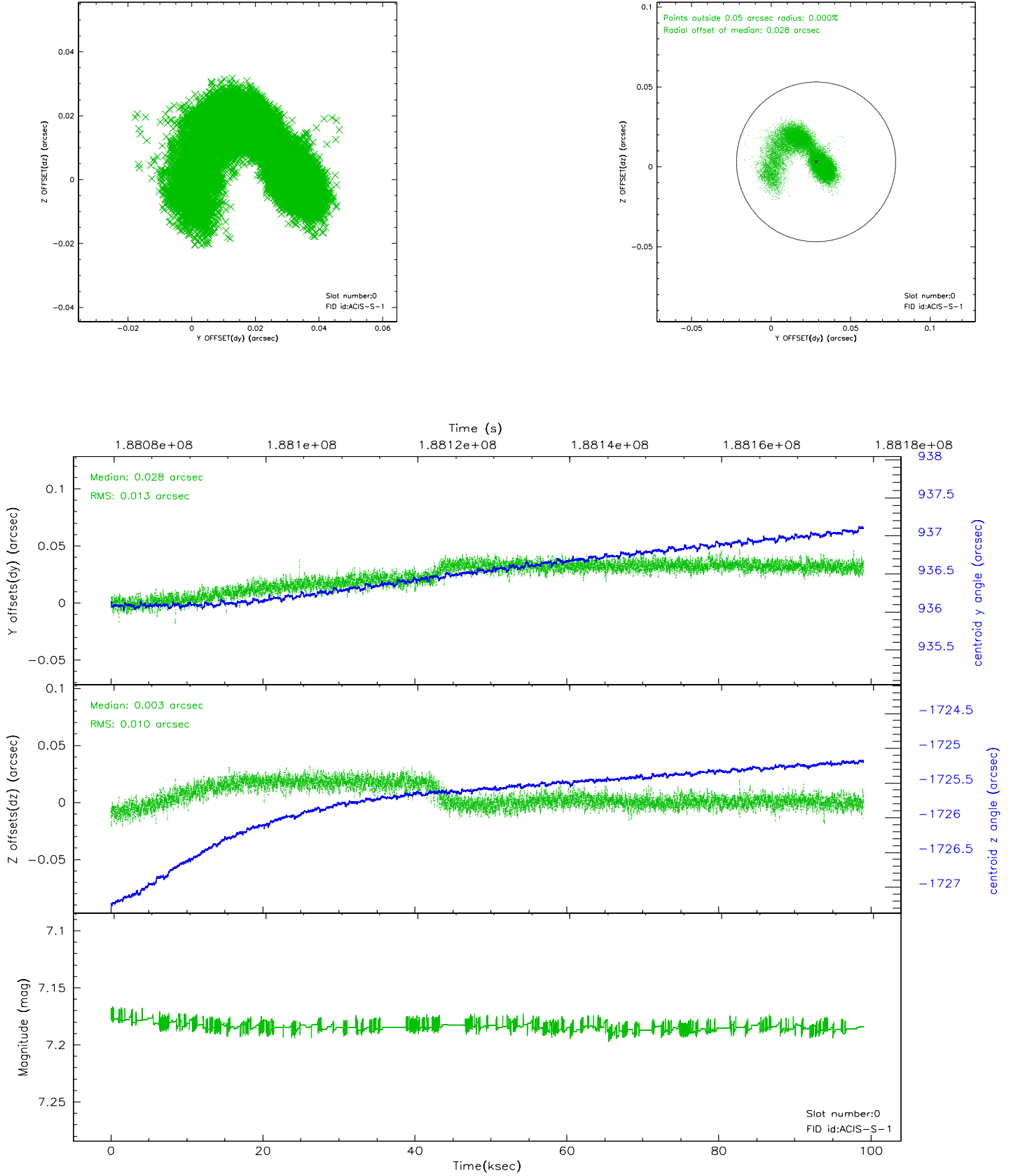


2.4.5 Slot 7

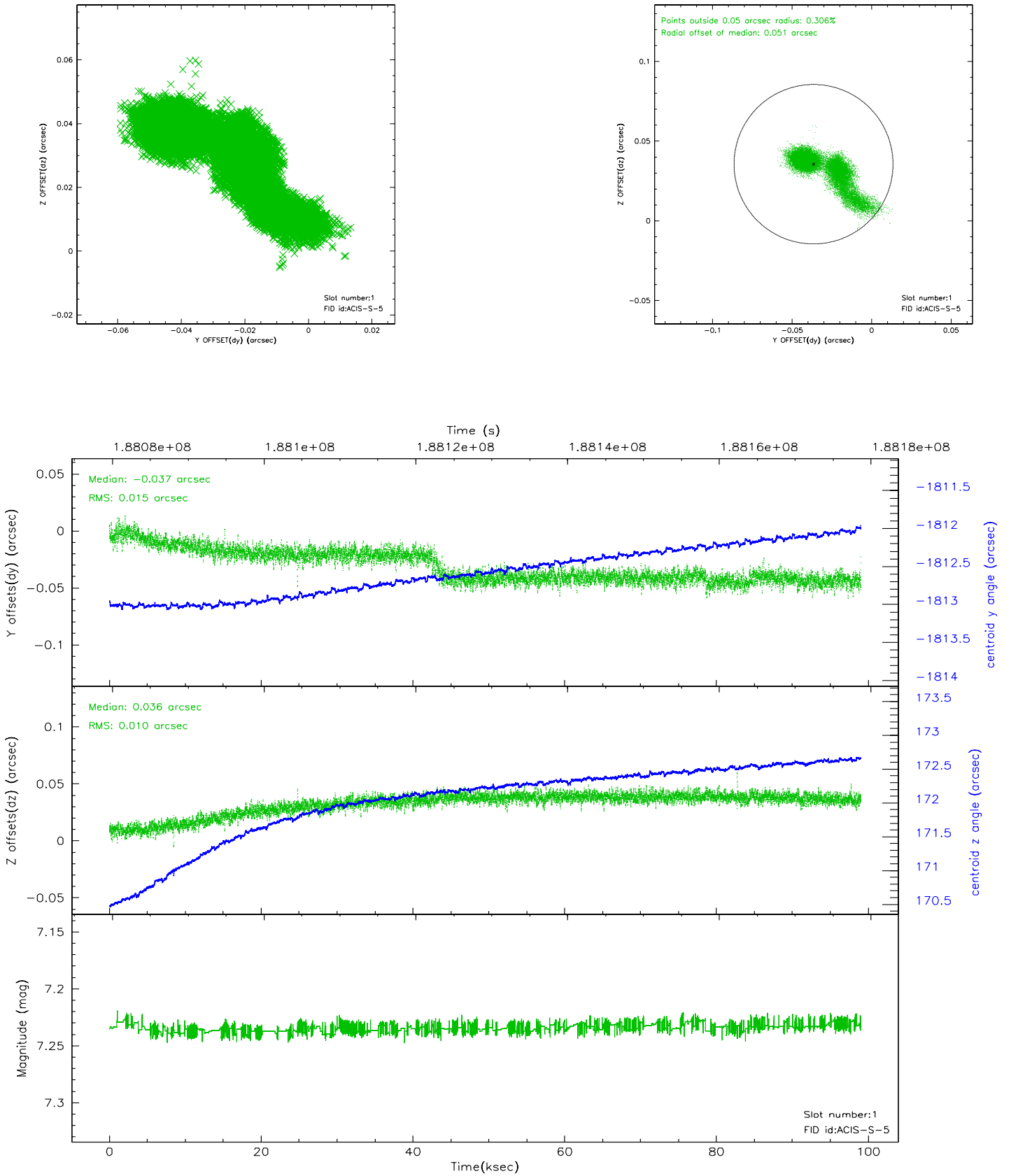


2.5 FID Slots

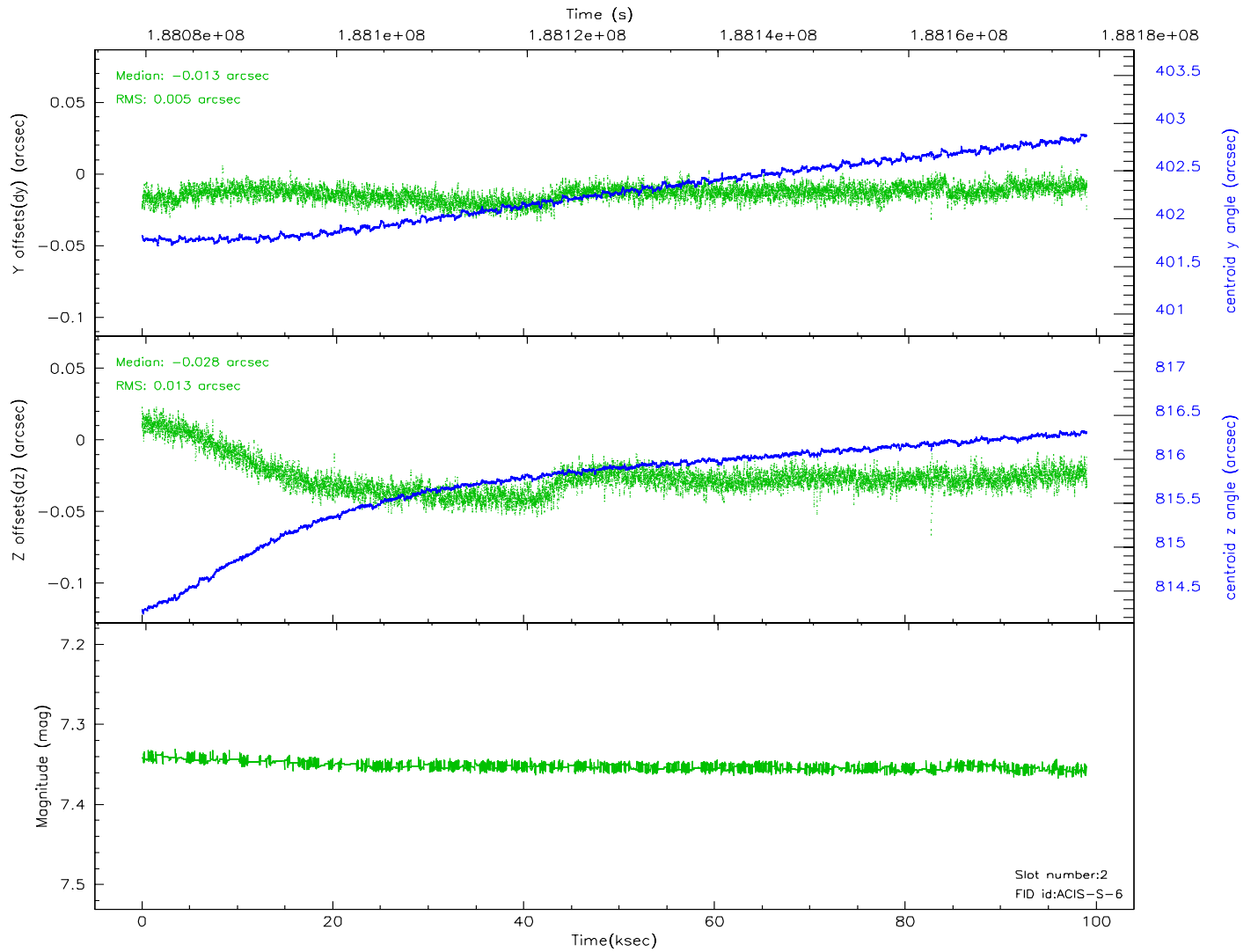
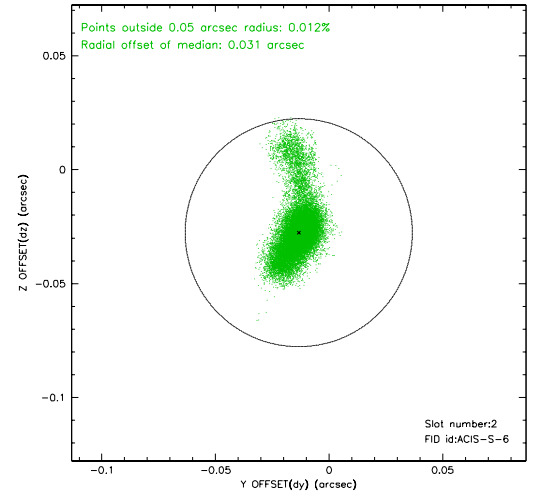
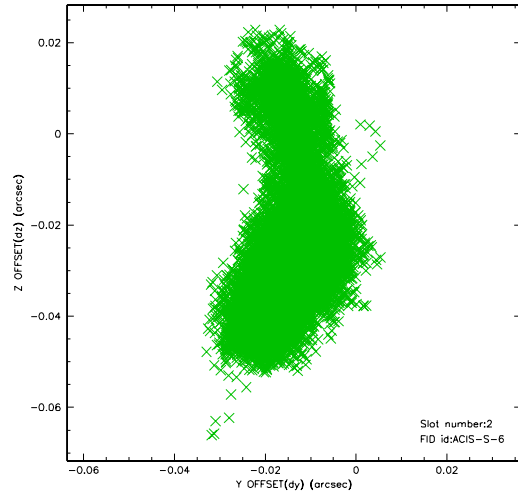
2.5.1 Slot 0



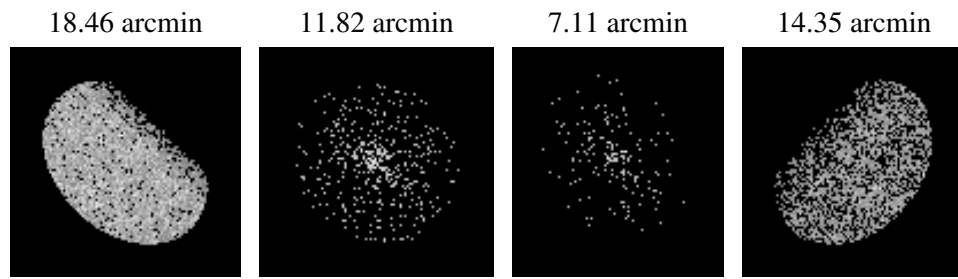
2.5.2 Slot 1



2.5.3 Slot 2



3 Point Sources



A Summary

A.1 Status

V&V Scientist	Beth Sundheim
V&V Date (YYYY-MM-DD)	2006.06.26
V&V Edition	1
V&V Disposition and Status	OK
V&V Charge Time	99.035

A.2 Comments