

# V&V Reference Report

## L2 ASCDS Version : 7.6.8

Observation 4193 - L2 Version 001  
Chandra X-Ray Center

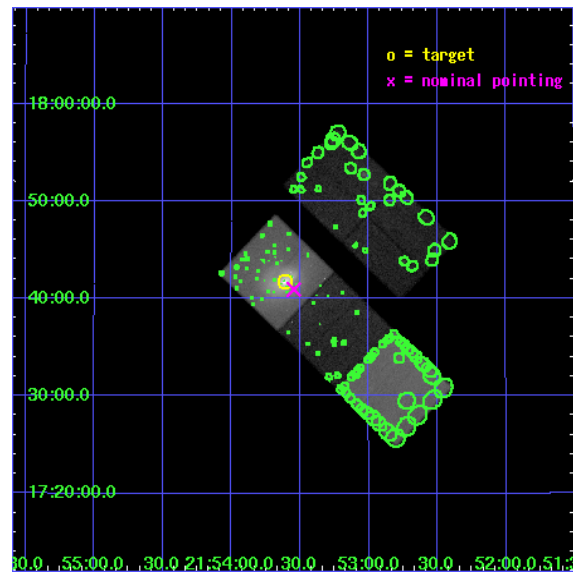
L2 Processing Date : Jul 6 2006

## Contents

<b>1</b>	<b>Front</b>	<b>2</b>
<b>2</b>	<b>OBI</b>	<b>3</b>
2.1	OBI . . . . .	3
2.1.1	Images . . . . .	3
2.1.2	Bias . . . . .	3
2.1.3	Parameters . . . . .	4
2.1.4	Events . . . . .	4
2.2	Compared Parameters . . . . .	5
2.3	Aspect . . . . .	6
2.4	Star Slots . . . . .	9
2.4.1	Slot 3 . . . . .	9
2.4.2	Slot 4 . . . . .	10
2.4.3	Slot 5 . . . . .	11
2.4.4	Slot 6 . . . . .	12
2.4.5	Slot 7 . . . . .	13
2.5	FID Slots . . . . .	14
2.5.1	Slot 0 . . . . .	14
2.5.2	Slot 1 . . . . .	15
2.5.3	Slot 2 . . . . .	16
<b>3</b>	<b>Point Sources</b>	<b>17</b>
<b>A</b>	<b>Summary</b>	<b>18</b>
A.1	Status . . . . .	18
A.2	Comments . . . . .	18

# 1 Front

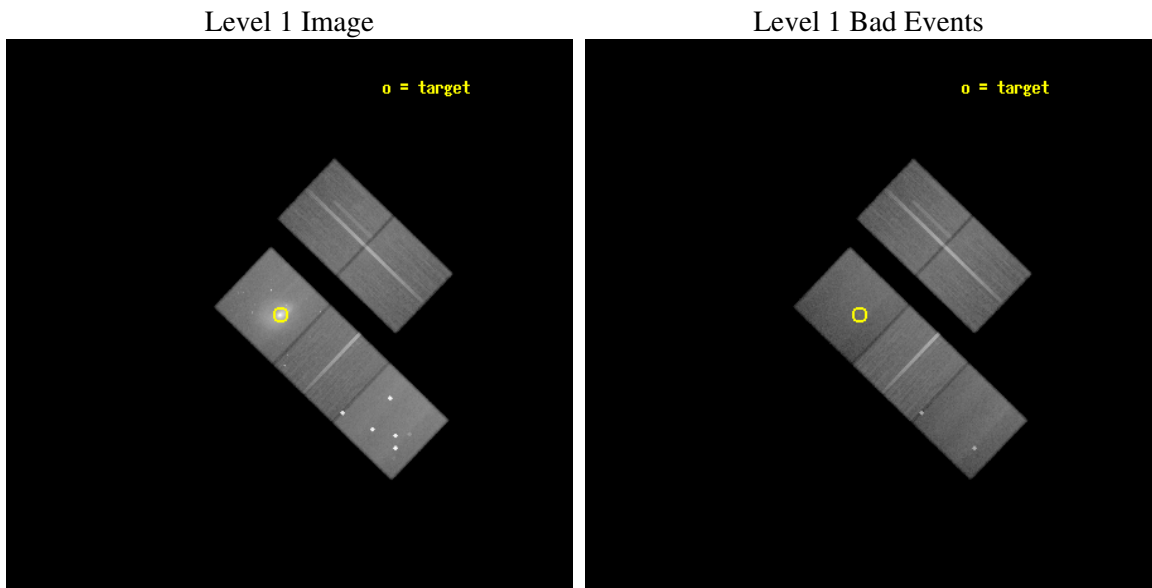
seq_num	800349
obs_id	4193
title	A DETAILED STUDY OF THE LUMINOUS LENSING CLUSTER ABELL 2390
observer	Dr Steven Allen
object	ABELL 2390
dtcycle	0
cycle	P
ra_targ	328.403333
dec_targ	17.695556
ra_nom	328.3864382833
dec_nom	17.682475041863
roll_nom	223.87853449702
revision	2
ontime	96320.058834553
livetime	95061.566356084
ontime2	96294.930972606
ontime3	96301.212972939
ontime5	96320.058834553
ontime6	96282.366961896
ontime7	96320.058834553
l2events	906218



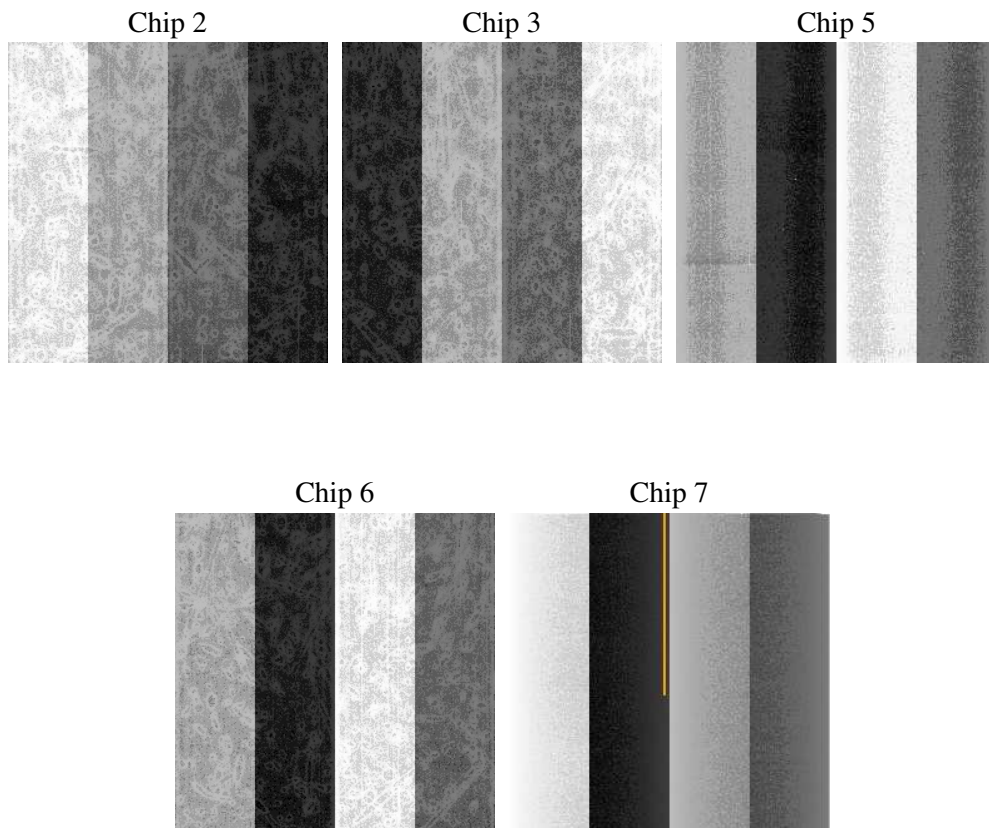
## 2 OBI

### 2.1 OBI

#### 2.1.1 Images



#### 2.1.2 Bias



### 2.1.3 Parameters

obi_num	0
ascdsver	7.6.8
caldsver	3.2.2
date	2006-07-06T02:46:51
revision	2

sched_exp_time	96216.000000
ontime	96325.366229266
ontime2	96300.238367319
ontime3	96306.520367652
ontime5	96325.366249174
ontime6	96287.67435661
ontime7	96325.366229266
l1events	3134983

### 2.1.4 Events

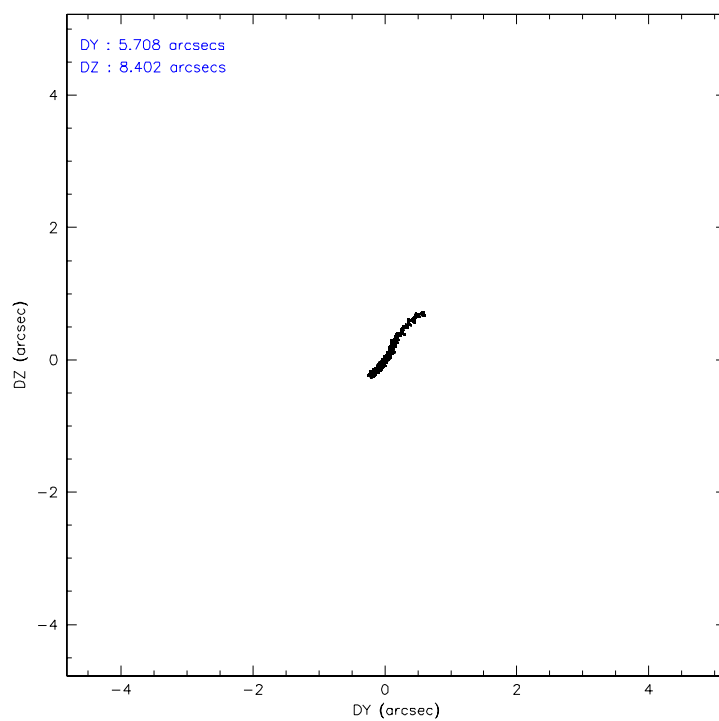
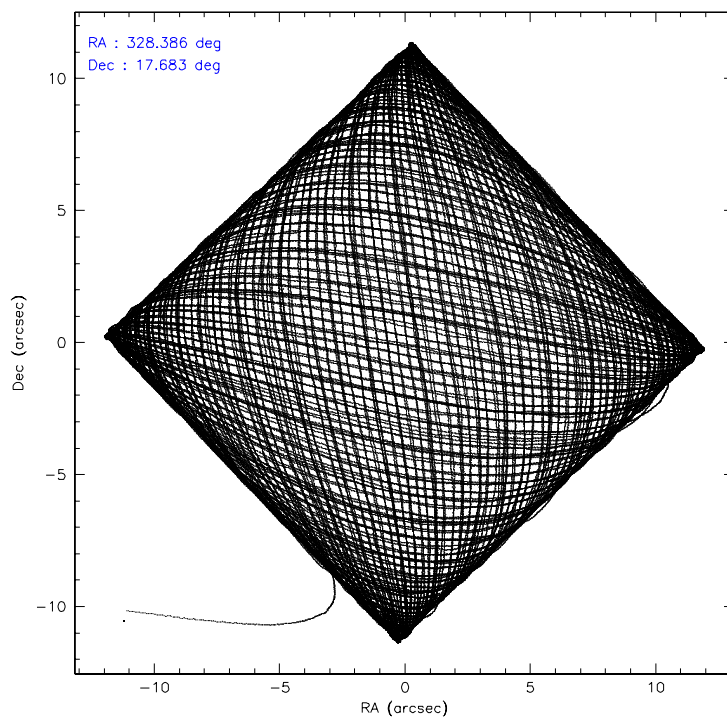
	ccd 2	ccd 3	ccd 5	ccd 6	ccd 7
level 1 events	514595	493421	800758	521380	804829
rejected events	466578	445308	357844	462837	323985
rejected %	90%	90%	44%	88%	40%

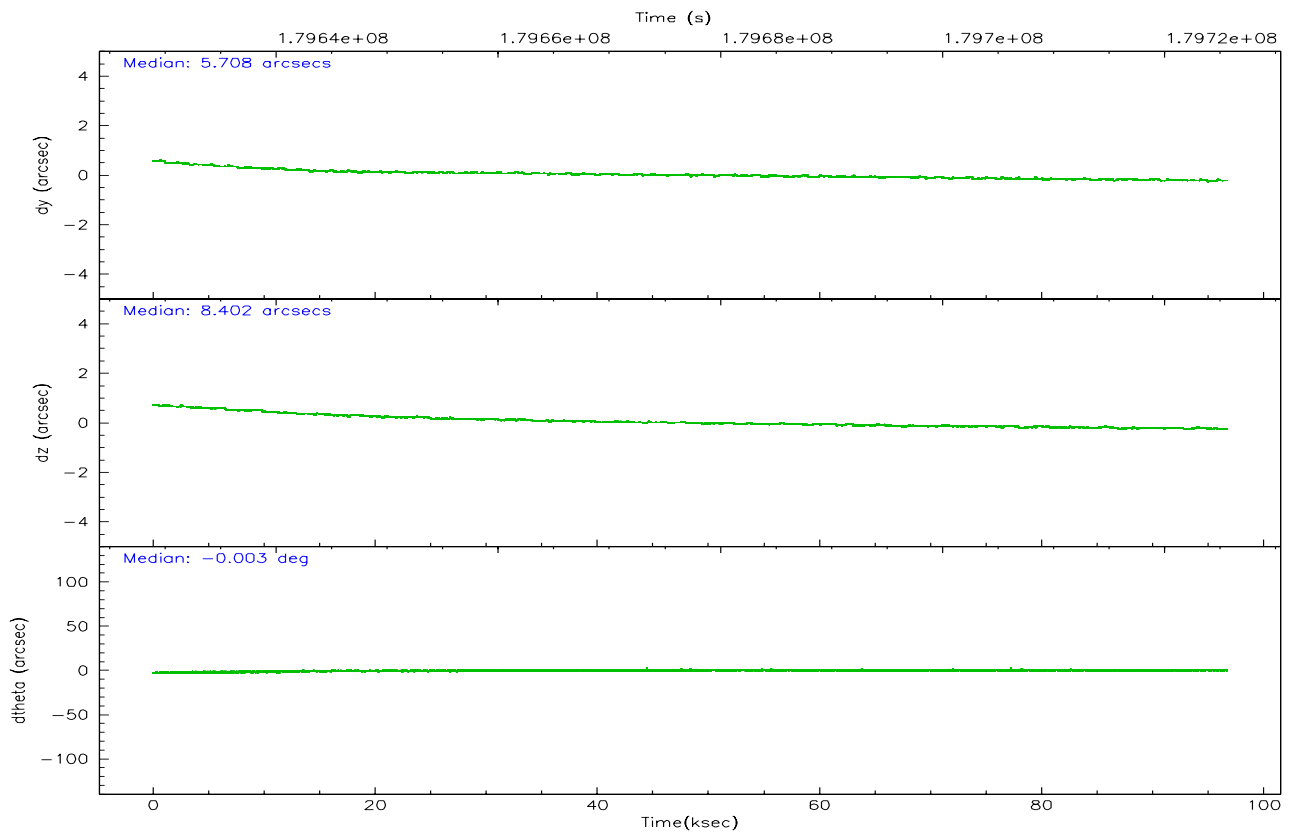
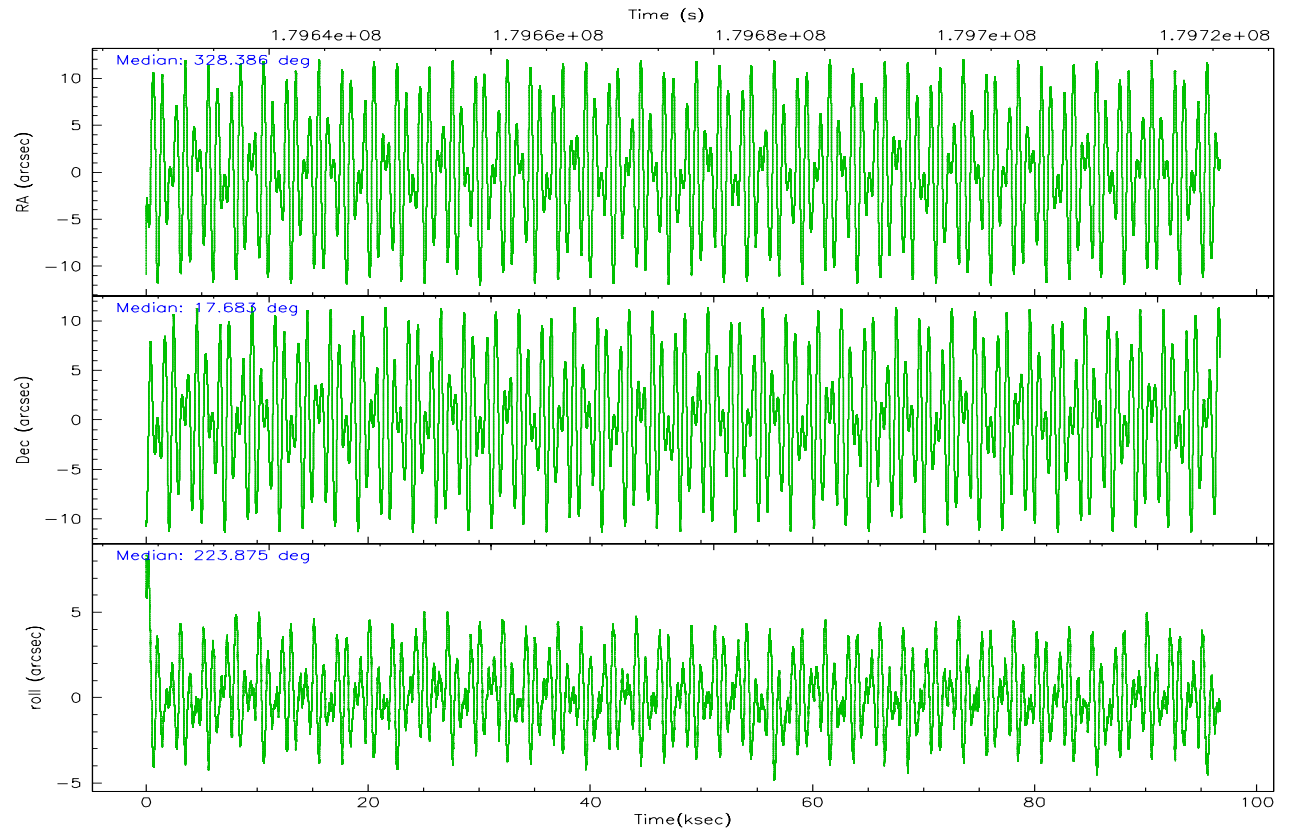
	ccd 2	ccd 3	ccd 5	ccd 6	ccd 7
grade 0 events	17696	18098	111684	23787	81100
	3%	3%	13%	4%	10%
grade 1 events	236	233	4853	240	318
	0%	0%	0%	0%	0%
grade 2 events	10724	9872	120854	11631	126933
	2%	2%	15%	2%	15%
grade 3 events	5368	5558	11719	6030	40845
	1%	1%	1%	1%	5%
grade 4 events	5473	5518	9187	5938	39736
	1%	1%	1%	1%	4%
grade 5 events	16096	19090	38559	20112	42691
	3%	3%	4%	3%	5%
grade 6 events	8761	9076	189498	11169	192270
	1%	1%	23%	2%	23%
grade 7 events	450241	425976	314404	442473	280936
	87%	86%	39%	84%	34%

## 2.2 Compared Parameters

Parameter	Planned	Actual	Parameter	Planned	Actual
Instrument	ACIS	ACIS	Obspar format version number	6	6
Detector	ACIS-23567	ACIS-23567	Obspar file type	PREDICTED	ACTUAL
Grating	NONE	NONE	Obspar update status	NONE	UPDATED
Data mode	VFAINT	VFAINT	On-chip summing requested	N	N
Observation mode	POINTING	POINTING	Subarray requested	NONE	NONE
Pointing RA	328.393984	328.3864382832972	Alternating exposures requested	N	N
Pointing Dec	17.708725	17.68247504186331	Primary exposure time	0.000000	3.1
Pointing Roll	223.719614	223.8785344970248			
SIM focus pos (mm)	-0.684267	-0.6828225247311905			
SIM defocus (mm)	0	0.001444936568705701			
SIM translation stage pos (mm)	-190.132523	-190.1400660498719			
SIM translation stage offset (mm)	0	0.00754346686406393			
Observation start time	179629409.184000	179628290.89262			
Observation start date	2003-09-11T01:02:25	2003-09-11T00:44:50			
Observation end time	179725625.184000	179727113.70935			
Observation end date	2003-09-12T03:46:01	2003-09-12T04:11:53			
Read mode	TIMED	TIMED			

## 2.3 Aspect



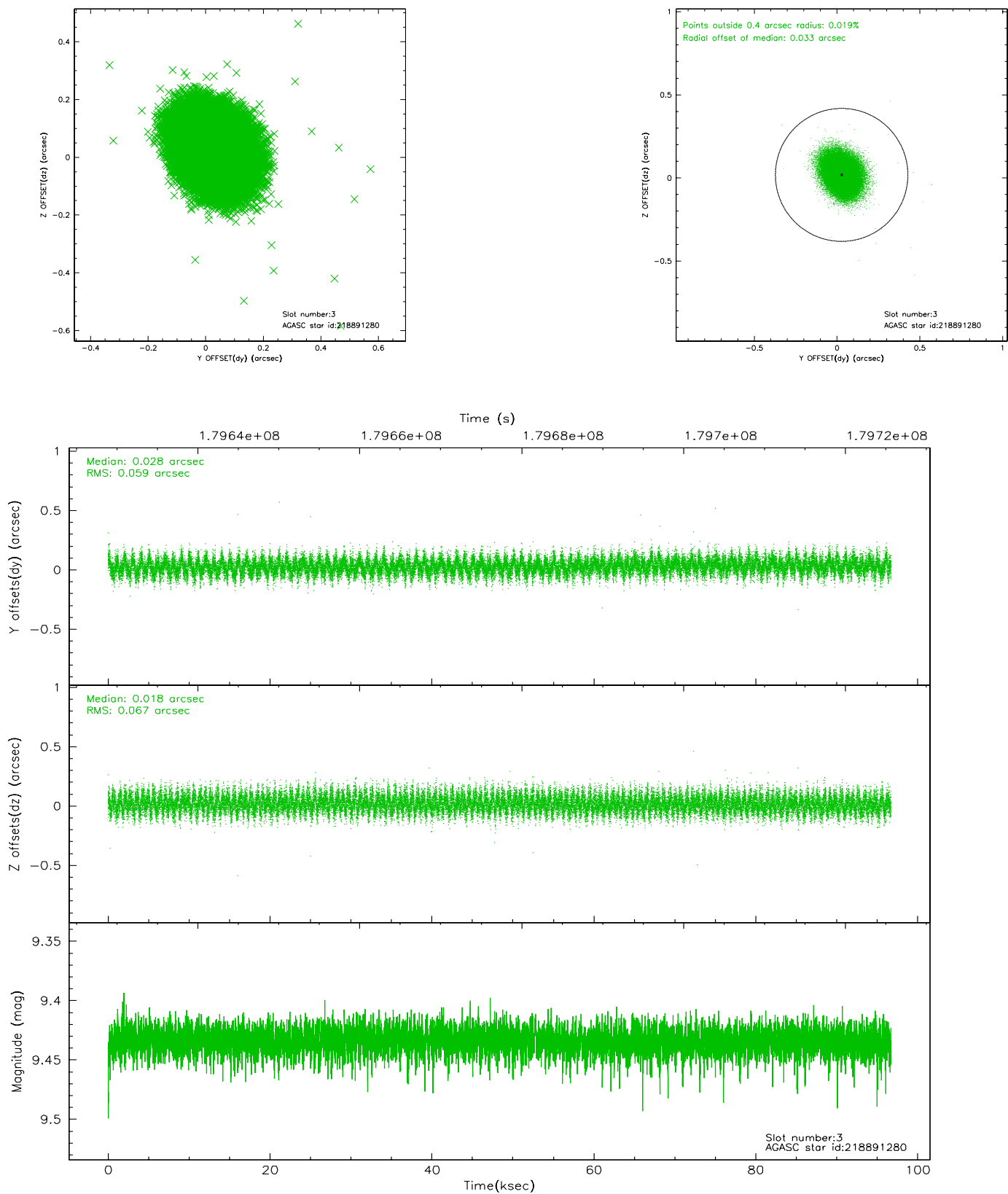


### Slot Statistics

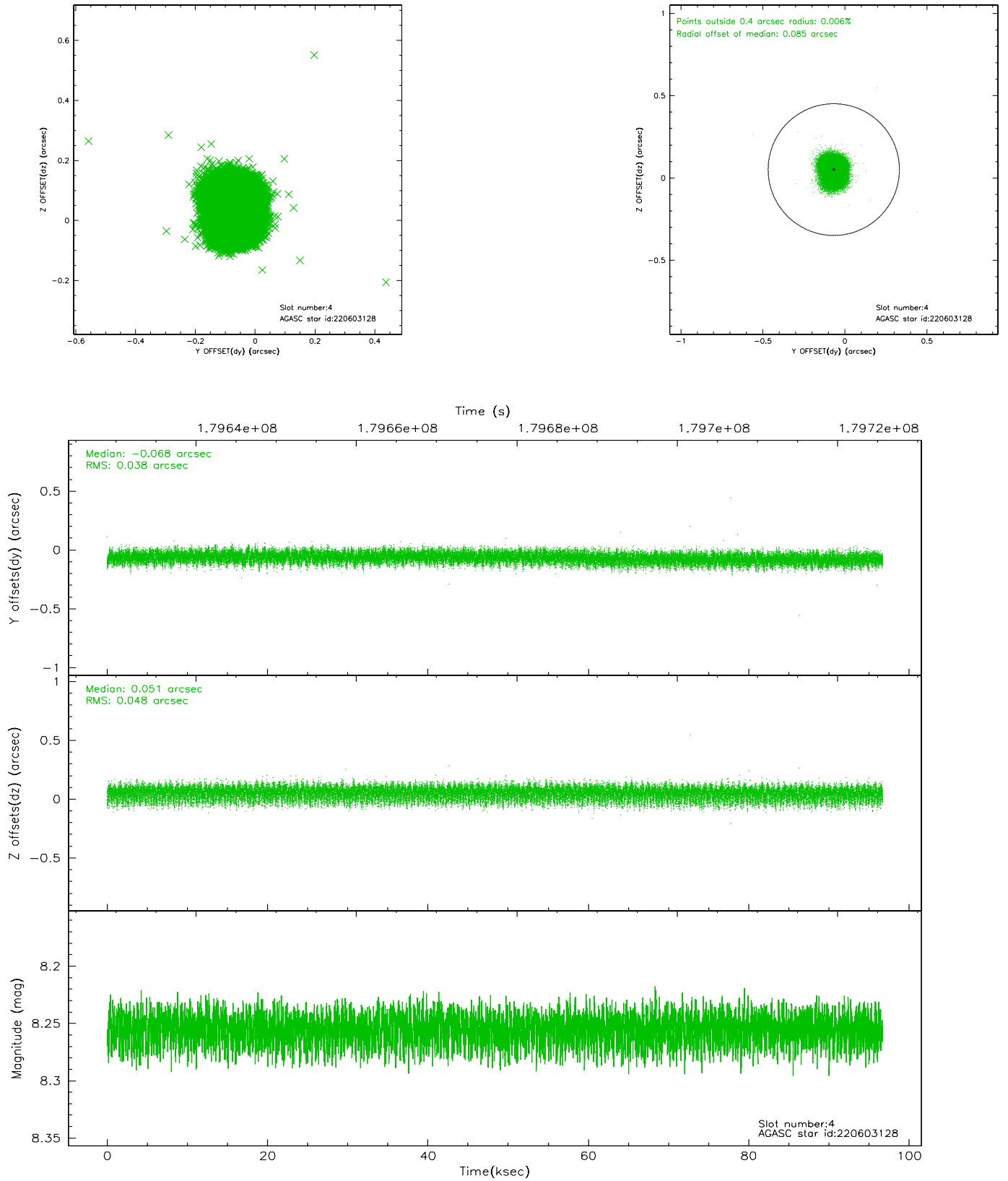
slot	status	id	mag	n_pts	med_dy	med_dz	dr1	dr2	ra	dec	mean_y	mean_z
0	FID	ACIS-S-2	7.10	23579	-0.029	-0.023	0.012	0.018	0.000000	0.000000	-758.50	-1729.69
1	FID	ACIS-S-4	7.21	23577	0.032	0.021	0.017	0.026	0.000000	0.000000	2154.90	178.90
2	FID	ACIS-S-5	7.23	23578	-0.034	0.012	0.016	0.026	0.000000	0.000000	-1811.44	172.51
3	GUIDE	218891280	9.43	47145	0.028	0.018	0.095	0.153	327.918129	17.875218	763.19	-1561.05
4	GUIDE	220603128	8.25	47160	-0.068	0.051	0.065	0.105	328.520927	18.399191	-2031.02	-1496.41
5	GUIDE	218893040	7.87	47156	-0.009	-0.003	0.067	0.110	327.514060	17.620573	2396.96	-1861.84
6	GUIDE	220606272	9.12	47147	0.059	0.032	0.084	0.137	328.515111	18.073879	-1207.68	-663.44
7	GUIDE	220604480	8.49	47150	-0.009	-0.091	0.058	0.094	328.811996	18.002482	-1765.87	223.82

## 2.4 Star Slots

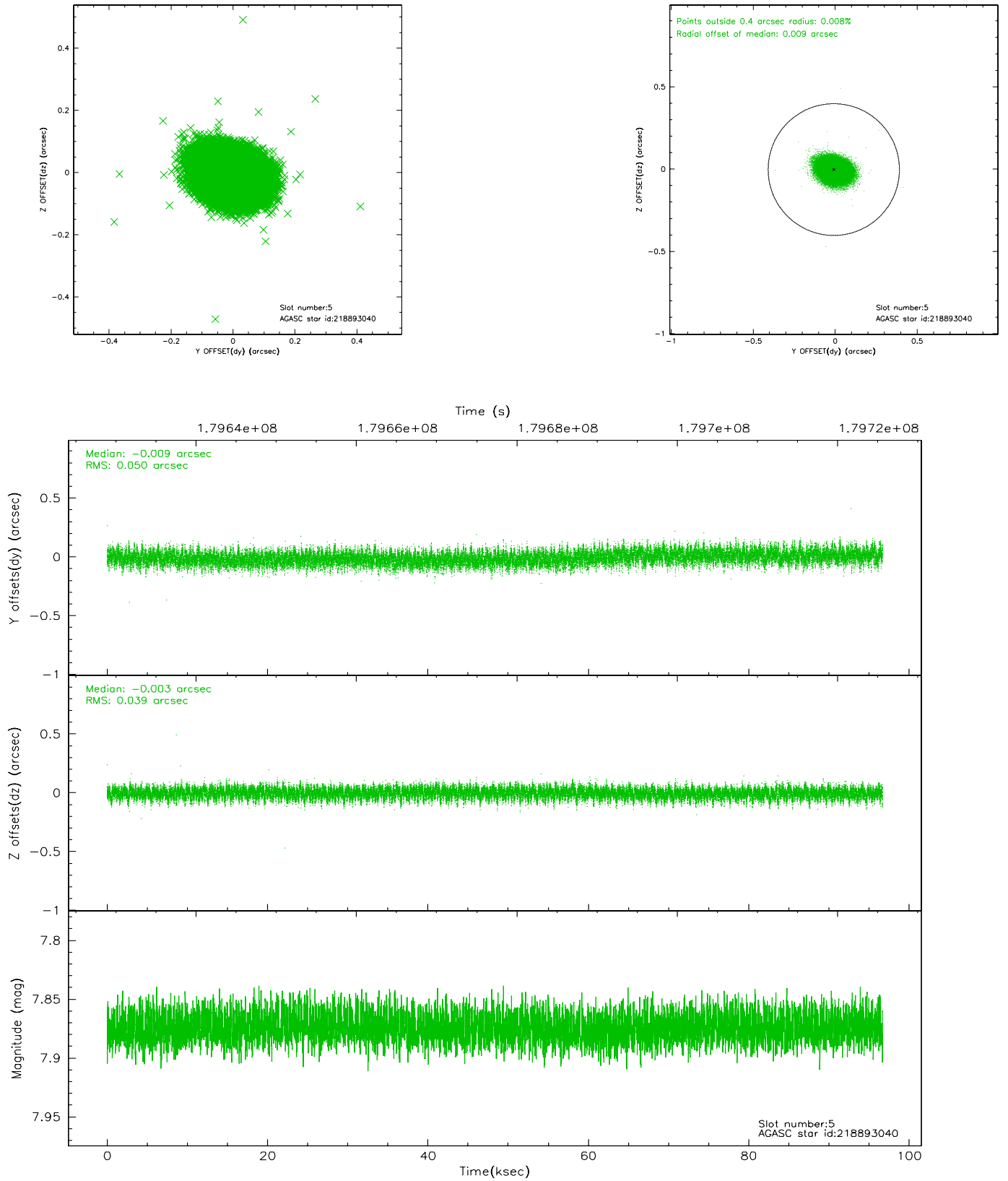
### 2.4.1 Slot 3



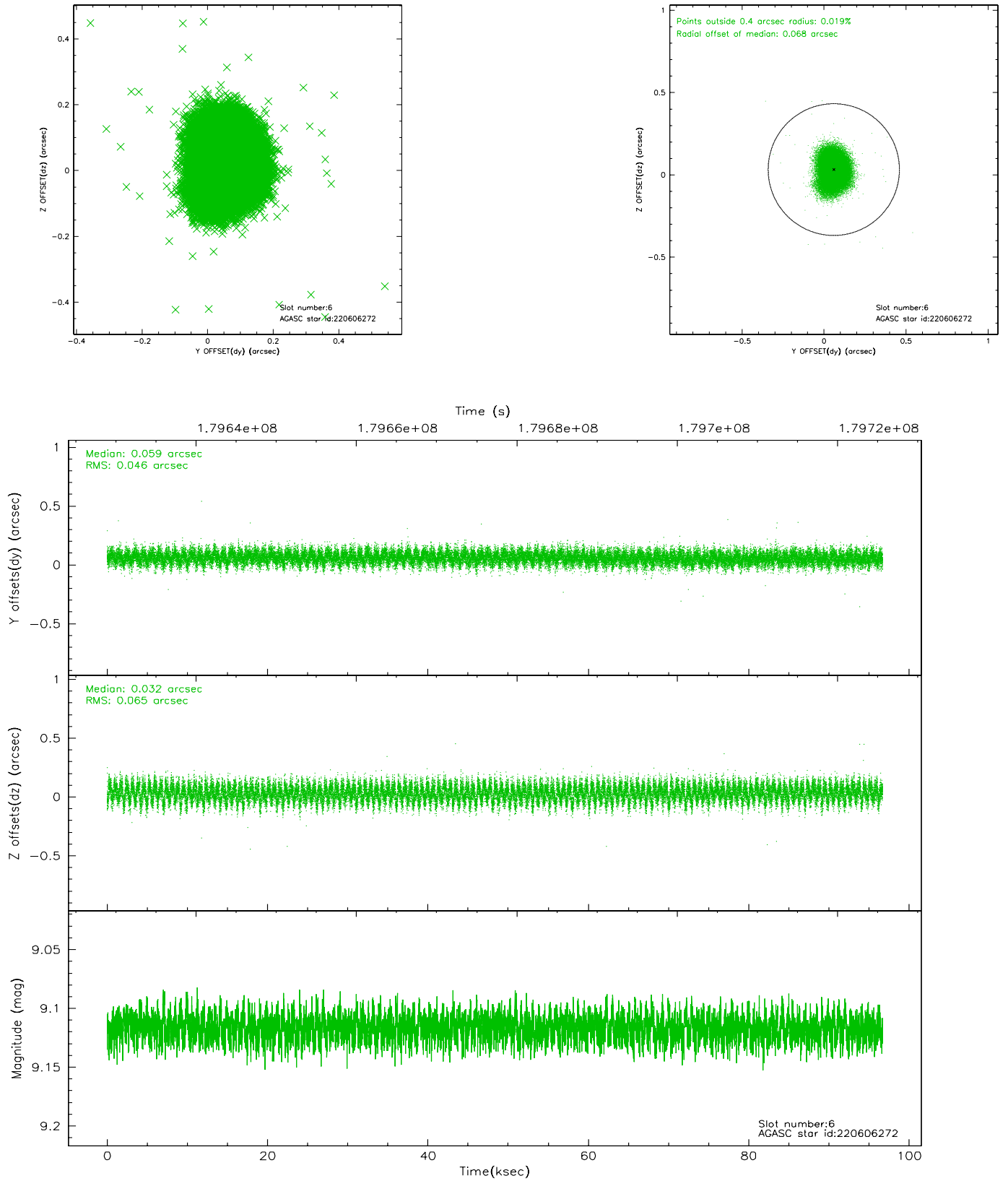
## 2.4.2 Slot 4



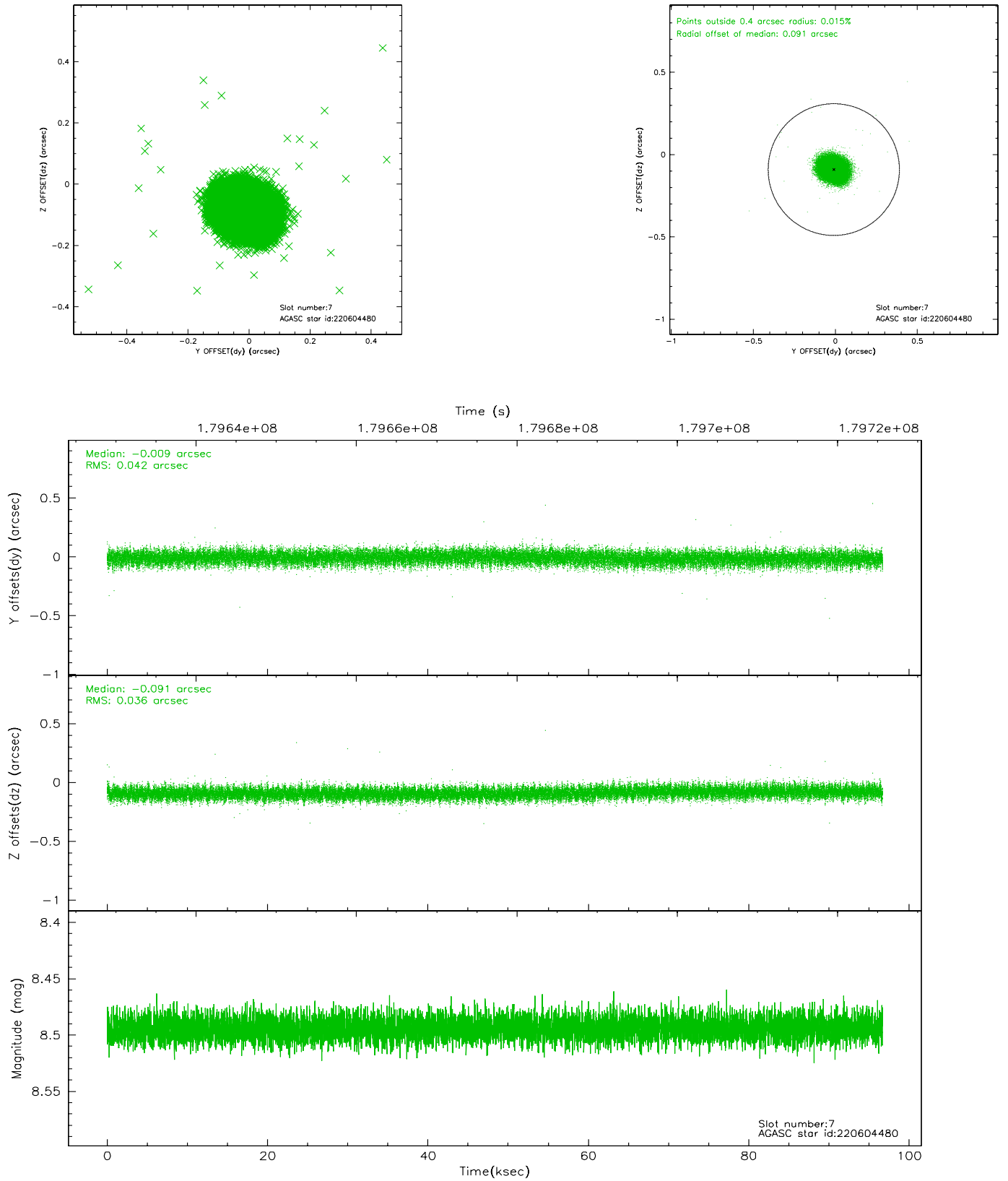
### 2.4.3 Slot 5



## 2.4.4 Slot 6

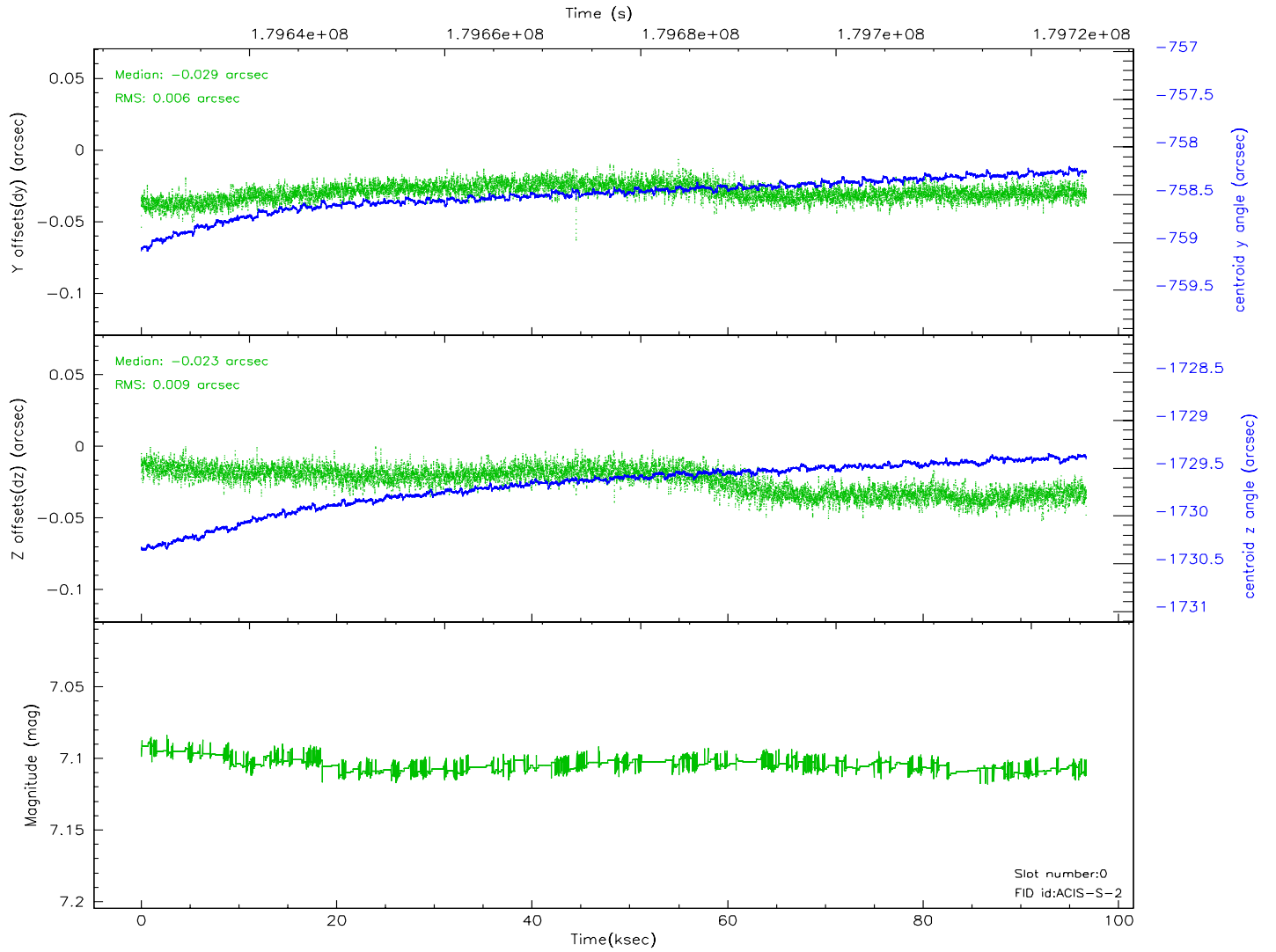
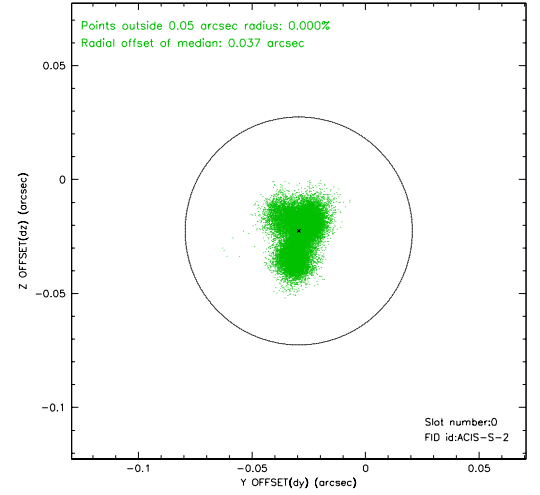
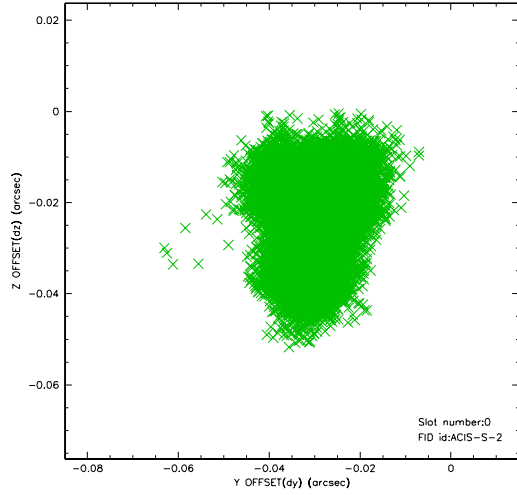


## 2.4.5 Slot 7

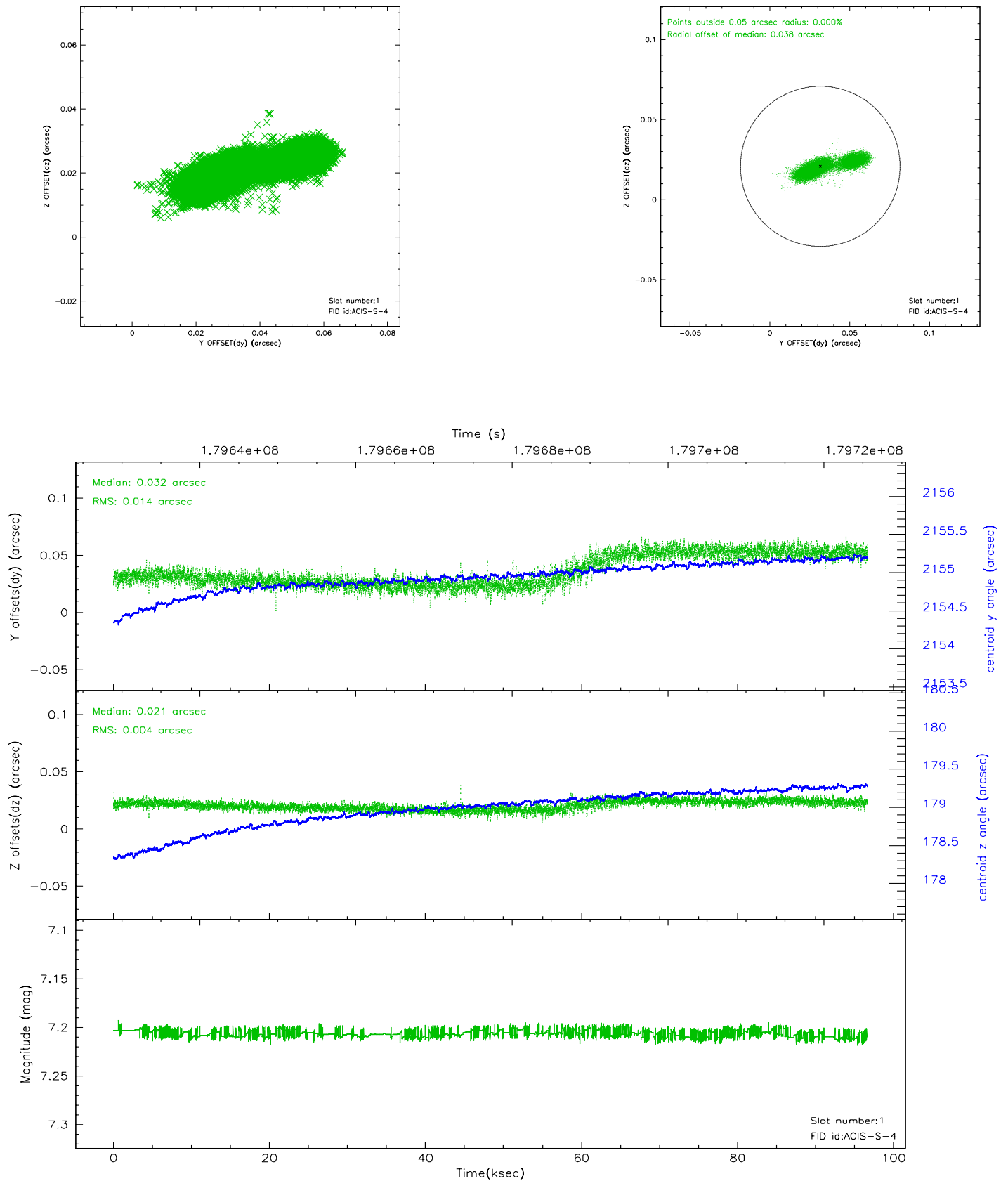


## 2.5 FID Slots

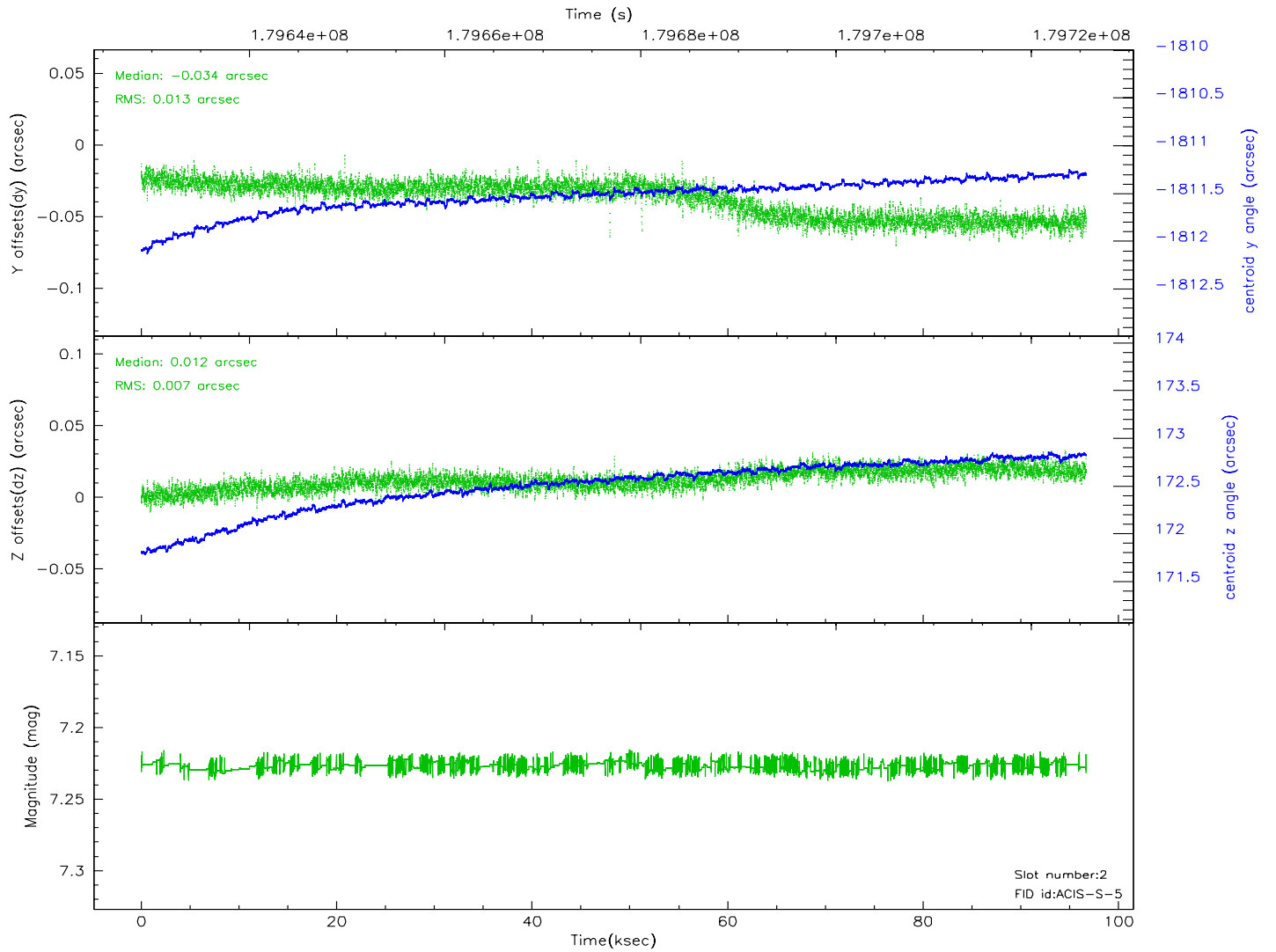
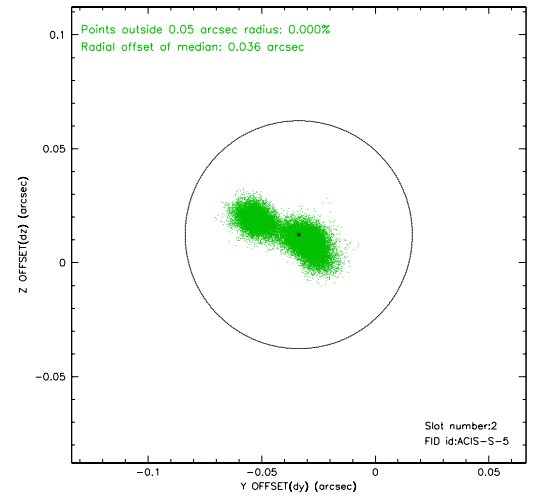
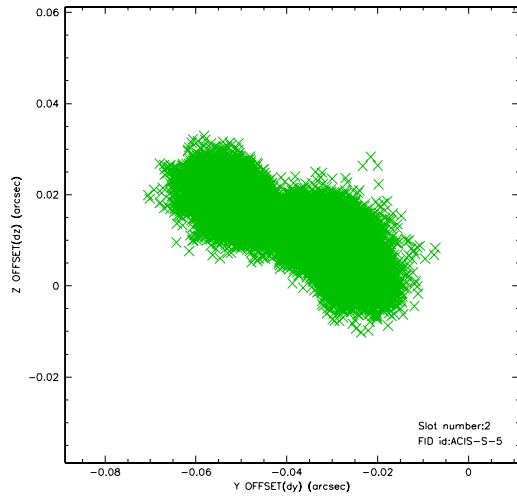
### 2.5.1 Slot 0



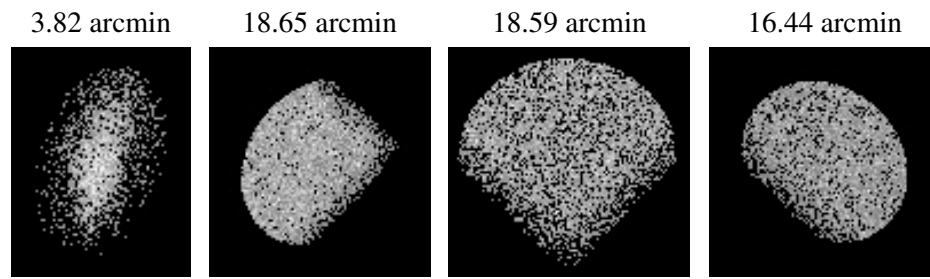
## 2.5.2 Slot 1



### 2.5.3 Slot 2



### 3 Point Sources



# A Summary

## A.1 Status

V&V Scientist	Beth Sundheim
V&V Date (YYYY-MM-DD)	2006.07.06
V&V Edition	1
V&V Disposition and Status	OK
V&V Charge Time	96.323

## A.2 Comments

Focal plane temperature is warmer than -118 degrees for a brief period in this observation. The ACIS calibrations are not verified or necessarily applicable for focal plane temperatures warmer than -118 degrees.