

# V&V Reference Report

## L2 ASCDS Version : 7.6.8.1

Observation 4191 - L2 Version 001  
Chandra X-Ray Center

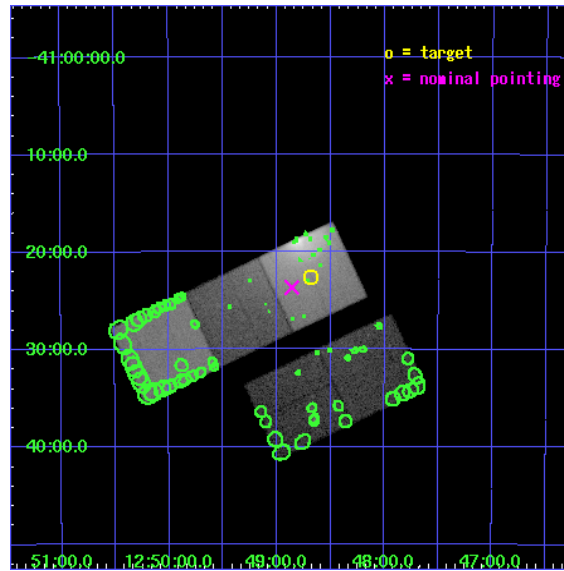
L2 Processing Date : Aug 4 2006

## Contents

<b>1</b>	<b>Front</b>	<b>2</b>
<b>2</b>	<b>OBI</b>	<b>3</b>
2.1	OBI . . . . .	3
2.1.1	Images . . . . .	3
2.1.2	Bias . . . . .	3
2.1.3	Parameters . . . . .	4
2.1.4	Events . . . . .	4
2.2	Compared Parameters . . . . .	5
2.3	Aspect . . . . .	6
2.4	Star Slots . . . . .	9
2.4.1	Slot 3 . . . . .	9
2.4.2	Slot 4 . . . . .	10
2.4.3	Slot 5 . . . . .	11
2.4.4	Slot 6 . . . . .	12
2.4.5	Slot 7 . . . . .	13
2.5	FID Slots . . . . .	14
2.5.1	Slot 0 . . . . .	14
2.5.2	Slot 1 . . . . .	15
2.5.3	Slot 2 . . . . .	16
<b>3</b>	<b>Point Sources</b>	<b>17</b>
<b>A</b>	<b>Summary</b>	<b>18</b>
A.1	Status . . . . .	18
A.2	Comments . . . . .	18

# 1 Front

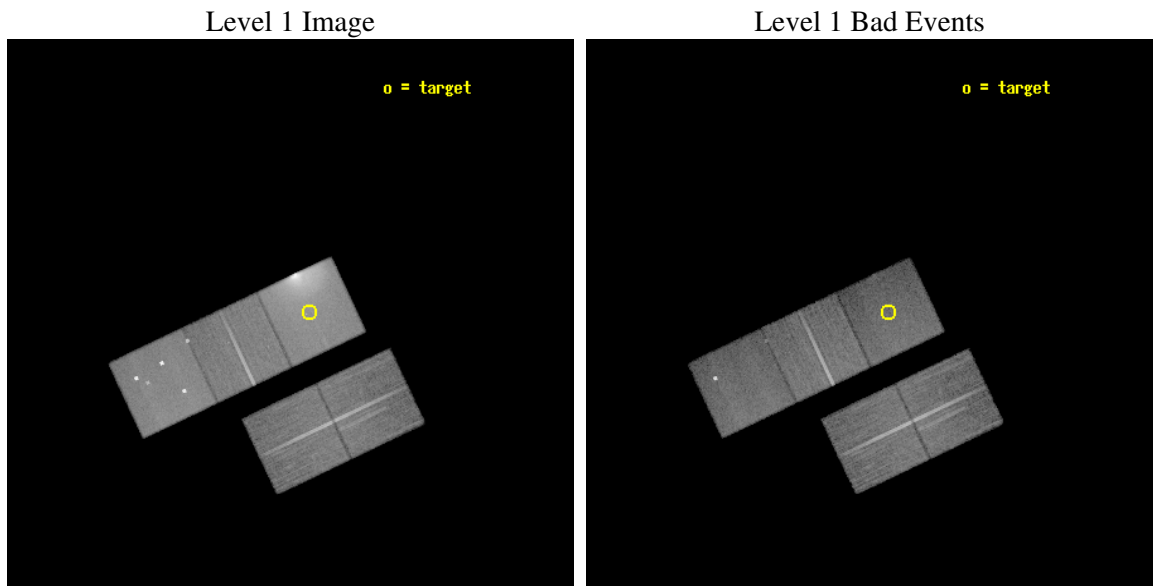
seq_num	800347
obs_id	4191
title	INTRACLUSTER GAS BULK VELOCITIES IN THE CENTAURUS CLUSTER
observer	Dr Renato Dupke
object	ABELL 3526
dtcycle	0
cycle	P
ra_targ	192.170833
dec_targ	-41.376667
ra_nom	192.21479406743
dec_nom	-41.39426059597
roll_nom	334.66369205563
revision	2
ontime	34471.99993372
livetime	34021.597876668
ontime2	34465.717953295
ontime3	34468.859043062
ontime5	34471.99993372
ontime6	34471.99993372
ontime7	34471.99993372
l2events	543653



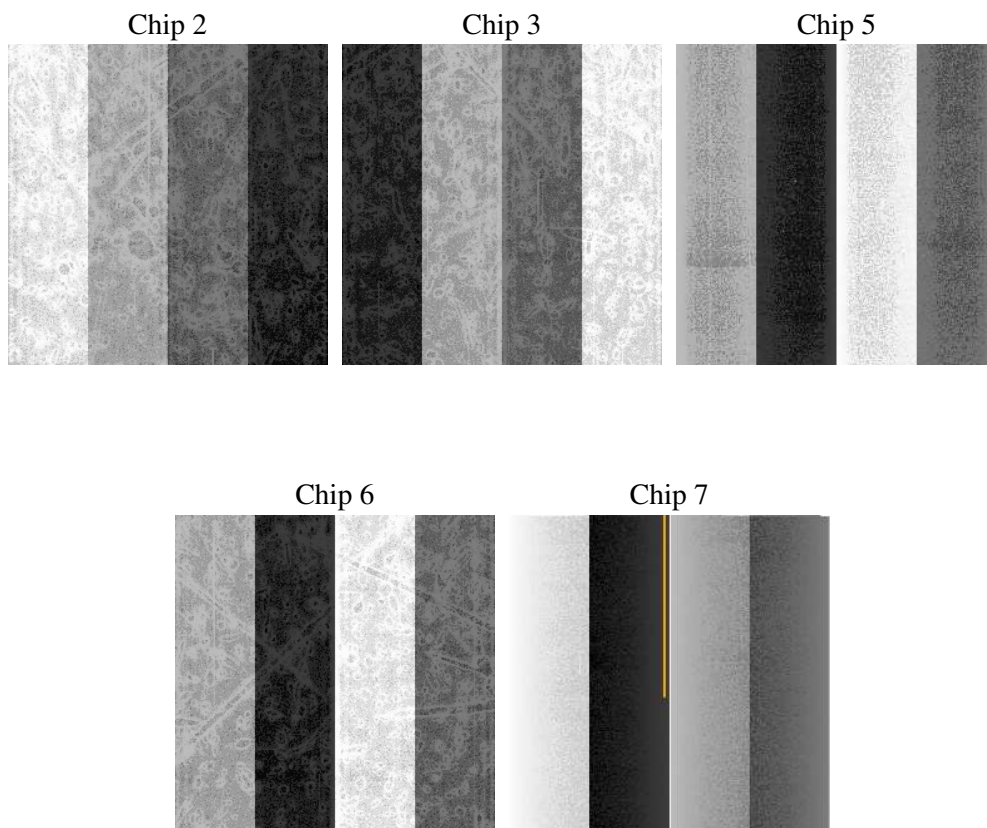
## 2 OBI

### 2.1 OBI

#### 2.1.1 Images



#### 2.1.2 Bias



### 2.1.3 Parameters

obi_num	1
ascdsver	7.6.8.1
caldbver	3.2.2
date	2006-08-04T21:45:57
revision	2

sched_exp_time	34700.000000
ontime	34475.739907354
ontime2	34472.59892711
ontime3	34472.598996788
ontime5	34475.739887446
ontime6	34475.739887446
ontime7	34475.739907354
l1events	1323302

### 2.1.4 Events

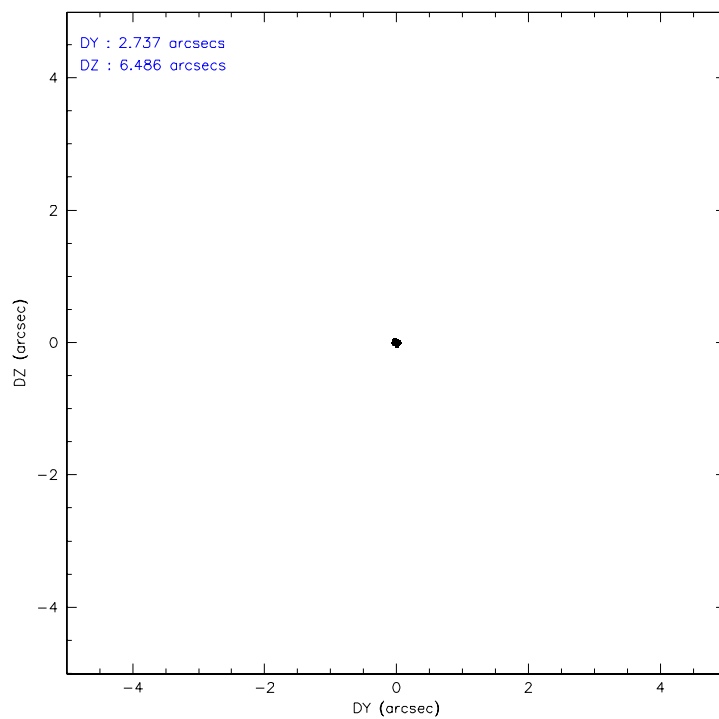
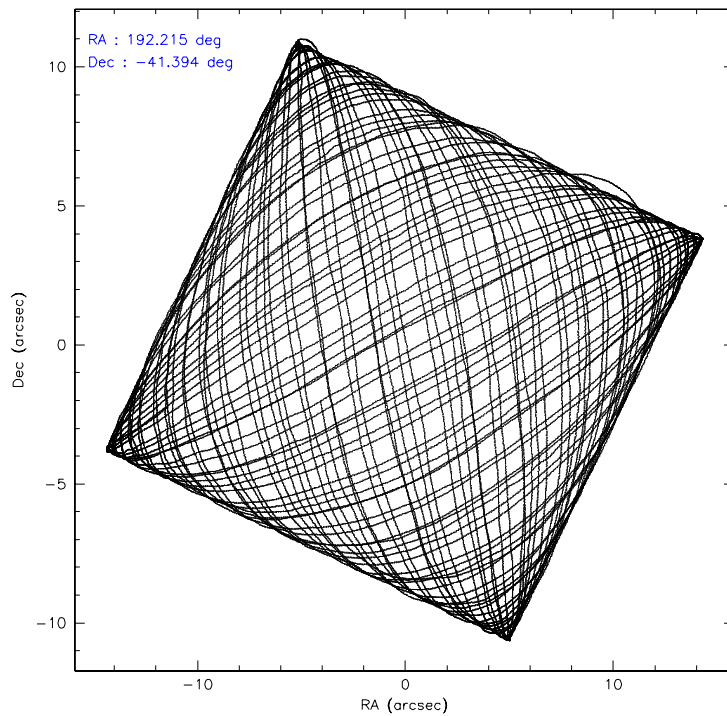
	ccd 2	ccd 3	ccd 5	ccd 6	ccd 7
level 1 events	194577	185364	282406	232363	428592
rejected events	167846	157654	131161	165829	117522
rejected %	86%	85%	46%	71%	27%

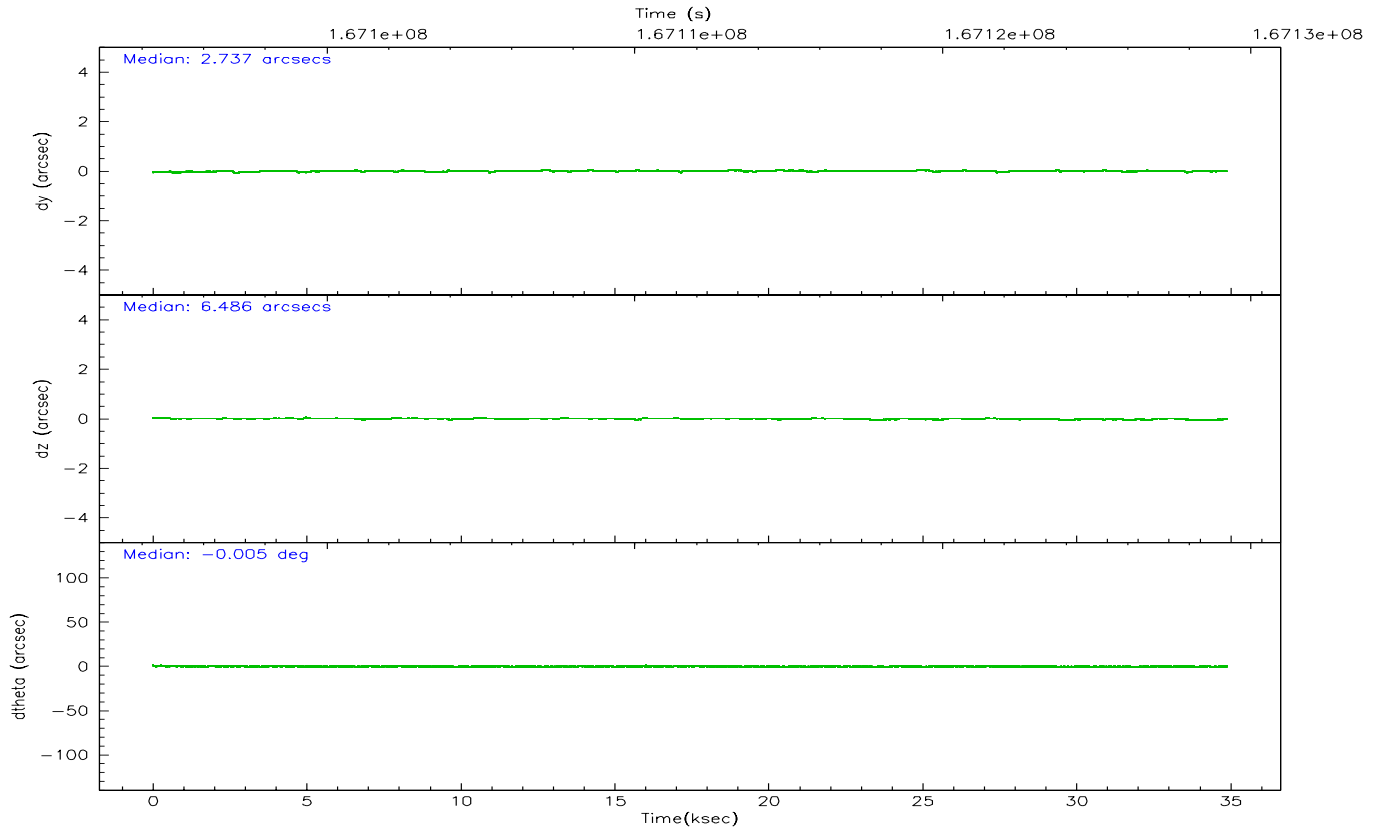
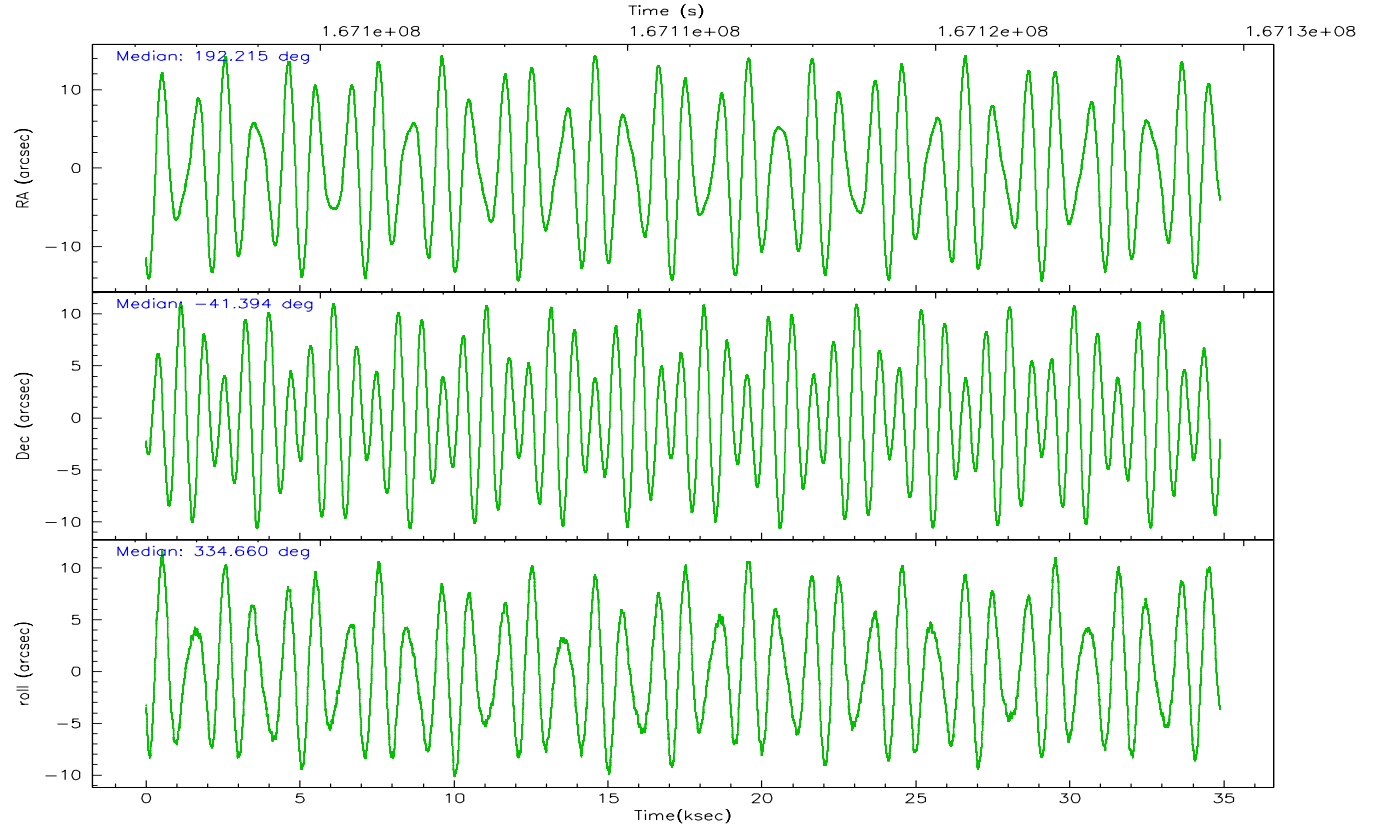
	ccd 2	ccd 3	ccd 5	ccd 6	ccd 7
grade 0 events	14172	15166	28126	45685	62915
	7%	8%	9%	19%	14%
grade 1 events	118	143	150	205	128
	0%	0%	0%	0%	0%
grade 2 events	4873	4450	45316	8688	84912
	2%	2%	16%	3%	19%
grade 3 events	2217	2298	4949	3535	31163
	1%	1%	1%	1%	7%
grade 4 events	2213	2287	4609	3516	30820
	1%	1%	1%	1%	7%
grade 5 events	5832	6781	16267	7140	16511
	2%	3%	5%	3%	3%
grade 6 events	3260	3512	68257	5116	101284
	1%	1%	24%	2%	23%
grade 7 events	161892	150727	114732	158478	100859
	83%	81%	40%	68%	23%

## 2.2 Compared Parameters

Parameter	Planned	Actual	Parameter	Planned	Actual
Instrument	ACIS	ACIS	Obspar format version number	6	6
Detector	ACIS-23567	ACIS-23567	Obspar file type	PREDICTED	ACTUAL
Grating	NONE	NONE	Obspar update status	NONE	UPDATED
Data mode	VFAINT	VFAINT	On-chip summing requested	N	N
Observation mode	POINTING	POINTING	Subarray requested	NONE	NONE
Pointing RA	192.178680	192.2147940674309	Alternating exposures requested	N	N
Pointing Dec	-41.396834	-41.39426059597041	Primary exposure time	0.000000	3.1
Pointing Roll	334.483177	334.6636920556334			
SIM focus pos (mm)	-0.684267	-0.6828225247311905			
SIM defocus (mm)	0	0.001444936568705701			
SIM translation stage pos (mm)	-190.132523	-190.1400660498719			
SIM translation stage offset (mm)	0	0.00754346686406393			
Observation start time	167094536.184000	167094160.37187			
Observation start date	2003-04-18T23:07:52	2003-04-18T23:02:40			
Observation end time	167129236.184000	167129643.31087			
Observation end date	2003-04-19T08:46:12	2003-04-19T08:54:03			
Read mode	TIMED	TIMED			

## 2.3 Aspect





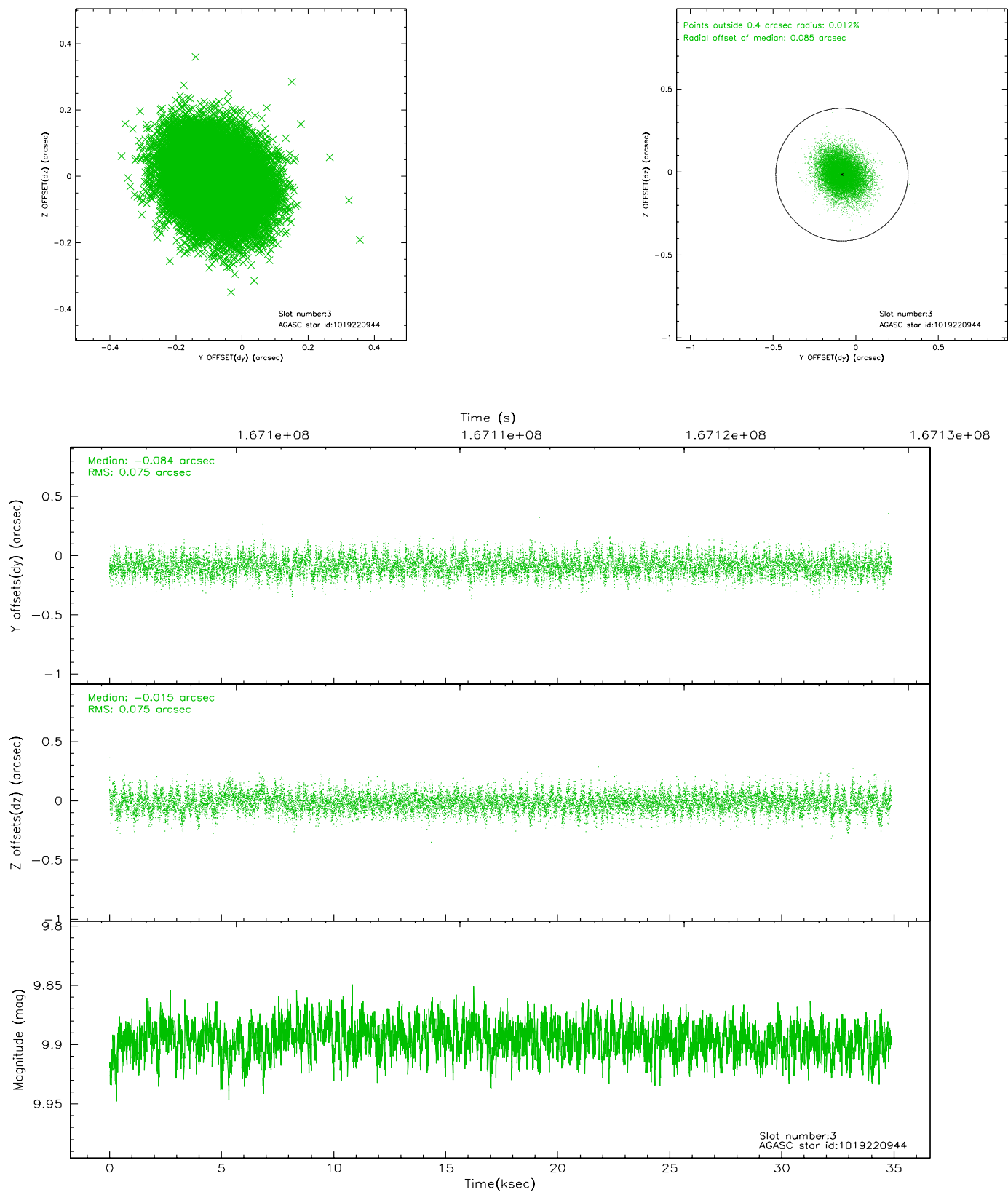
### Slot Statistics

slot	status	id	mag	n_pts	med_dy	med_dz	dr1	dr2	ra	dec	mean_y	mean_z
0	FID	ACIS-S-2	7.12	8509	-0.031	0.019	0.006	0.011	0.000000	0.000000	-755.37	-1727.63
1	FID	ACIS-S-4	7.21	8509	-0.031	0.010	0.005	0.009	0.000000	0.000000	2157.85	180.86
2	FID	ACIS-S-5	7.24	8509	0.031	-0.020	0.006	0.010	0.000000	0.000000	-1808.13	174.47
3	GUIDE	1019220944	9.90	17000	-0.084	-0.015	0.114	0.184	192.806424	-41.071482	1035.66	1785.45
4	GUIDE	1019221952	9.59	17003	0.010	-0.056	0.121	0.192	192.906873	-41.032646	1223.58	2027.80
5	GUIDE	1019615024	8.47	17016	-0.014	0.018	0.068	0.109	191.349086	-41.365736	-2066.02	-874.13
6	GUIDE	1019740808	8.79	17012	0.074	-0.026	0.072	0.115	192.766173	-41.251253	1211.59	1153.14
7	GUIDE	1019743536	8.64	17012	0.012	0.083	0.075	0.123	192.632057	-41.696442	1566.21	-451.00

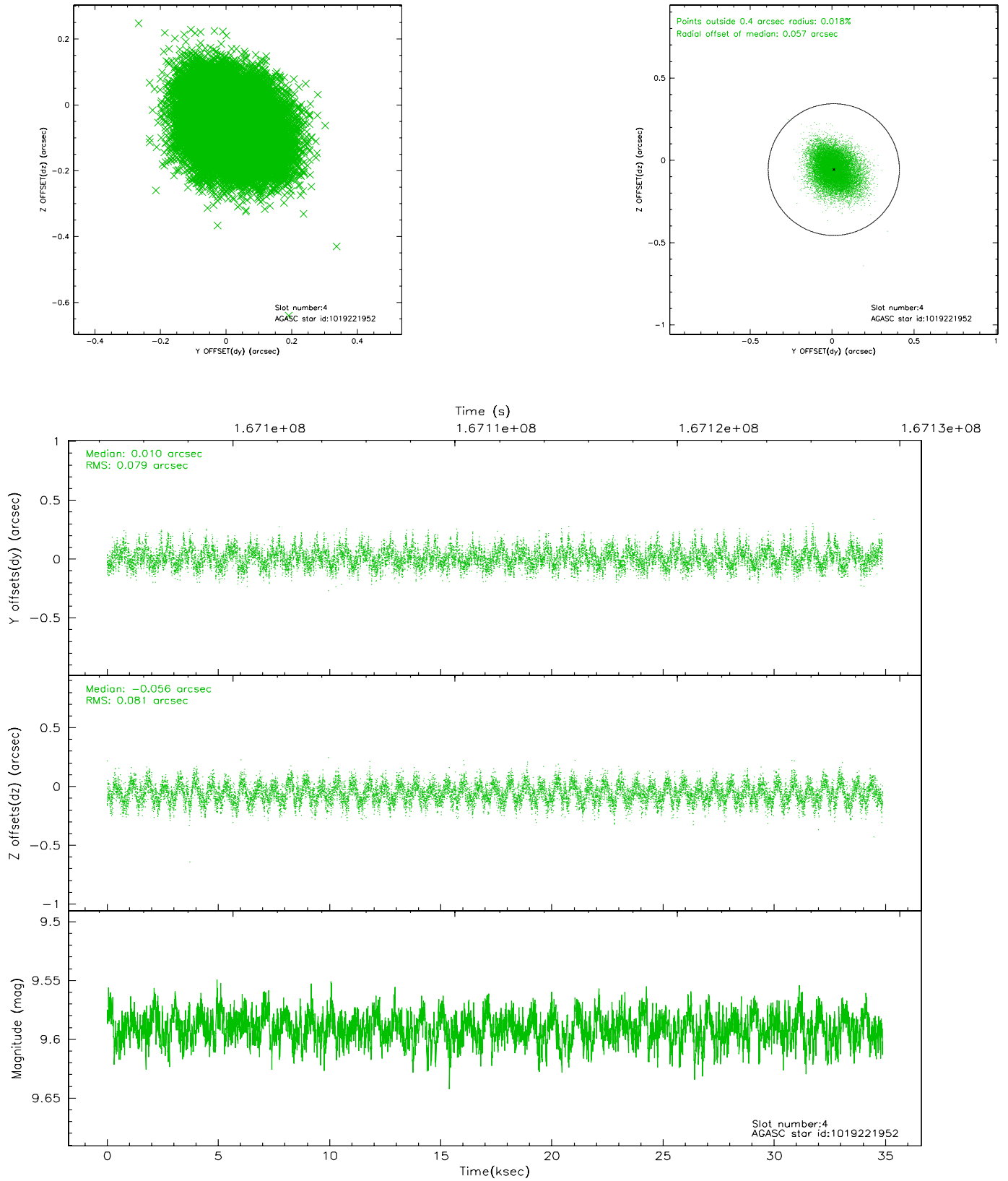


## 2.4 Star Slots

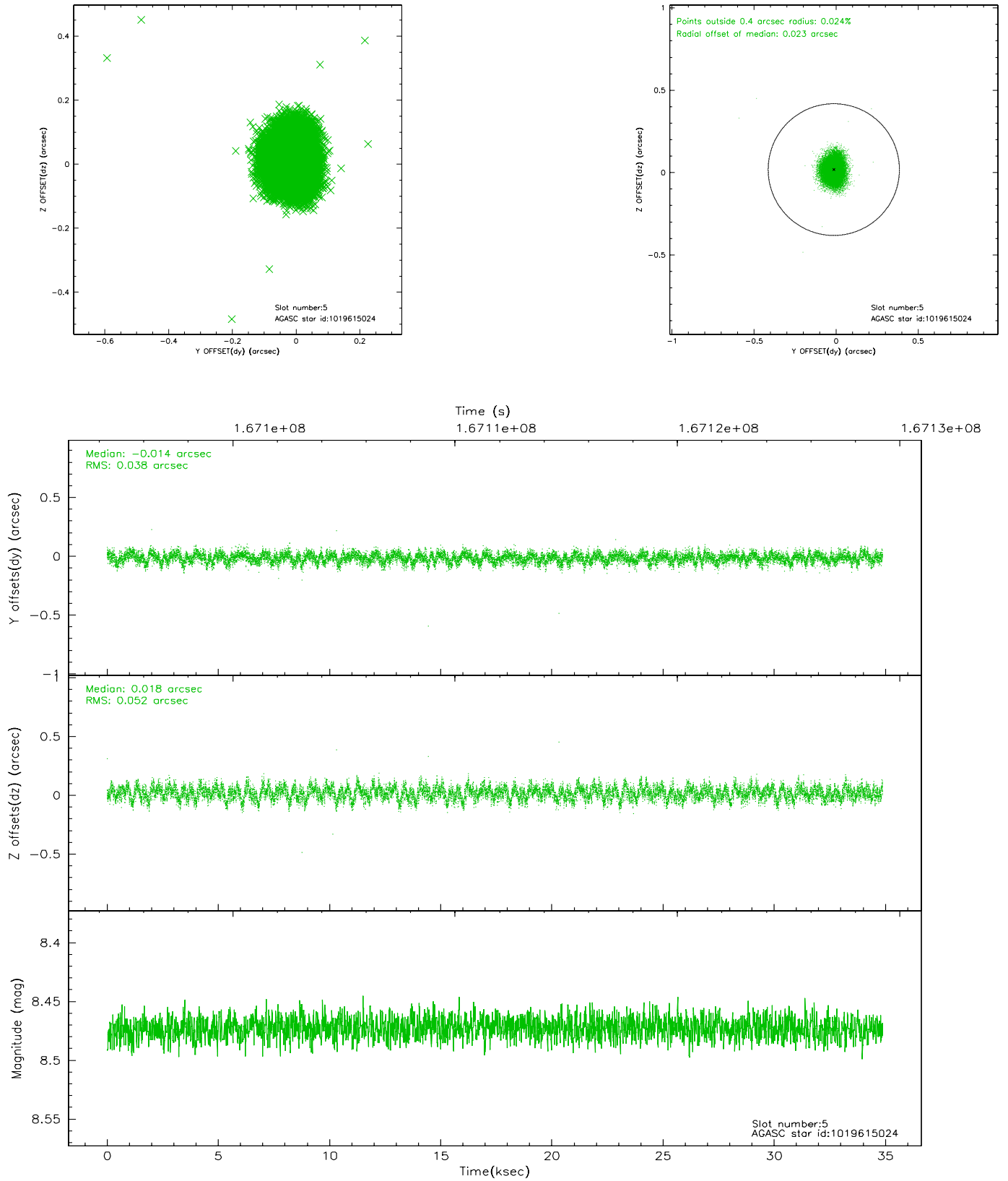
### 2.4.1 Slot 3



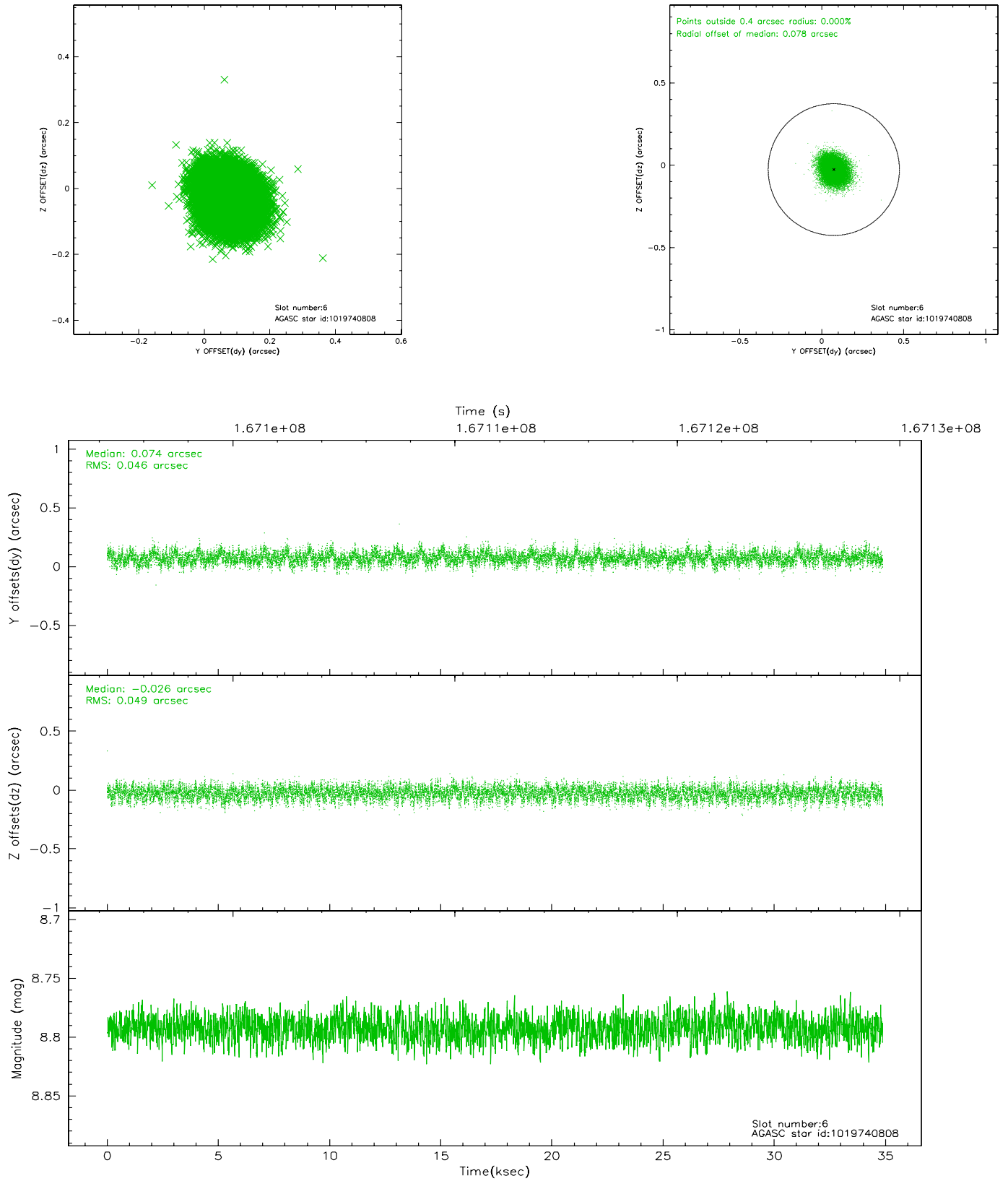
## 2.4.2 Slot 4



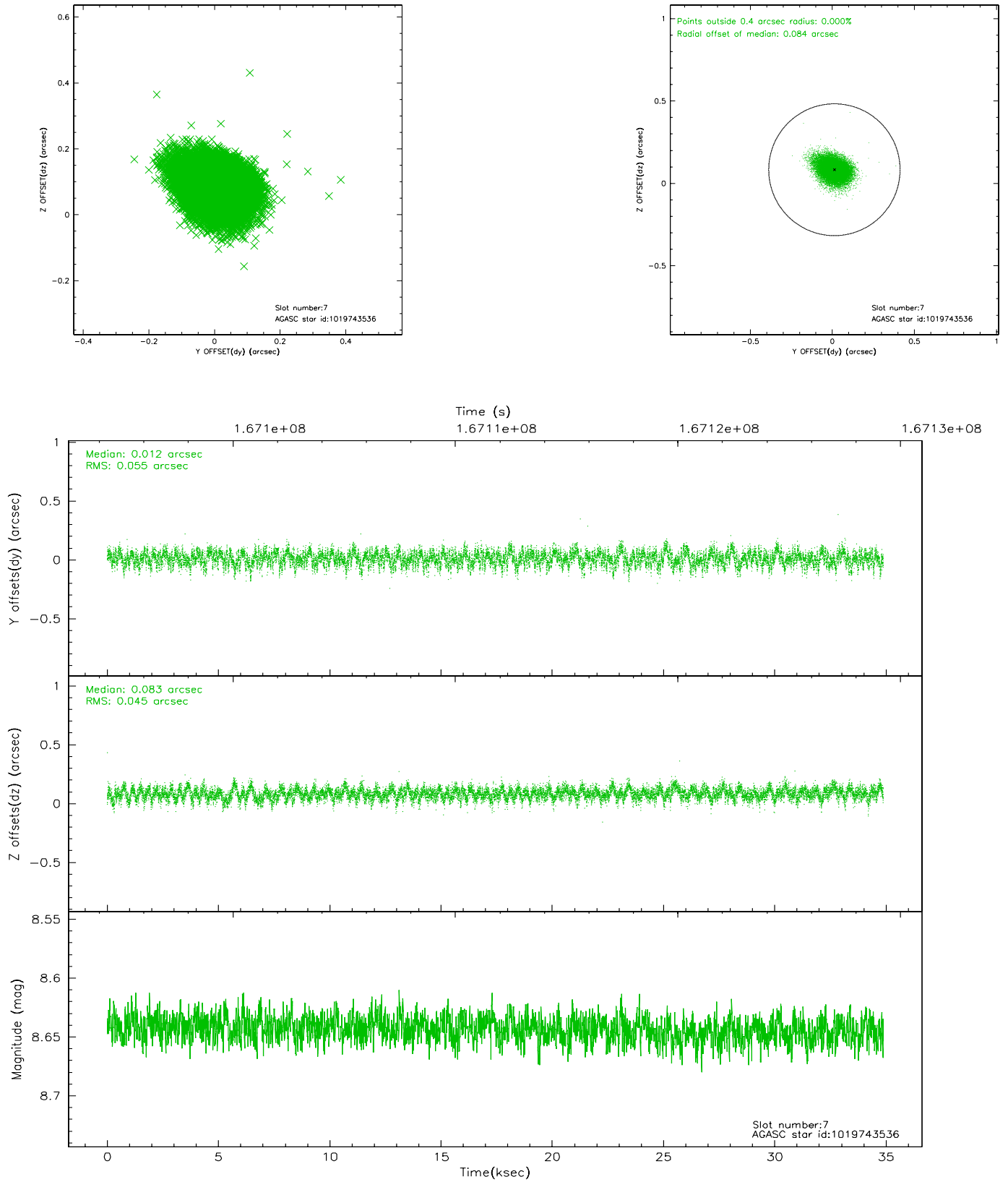
### 2.4.3 Slot 5



## 2.4.4 Slot 6

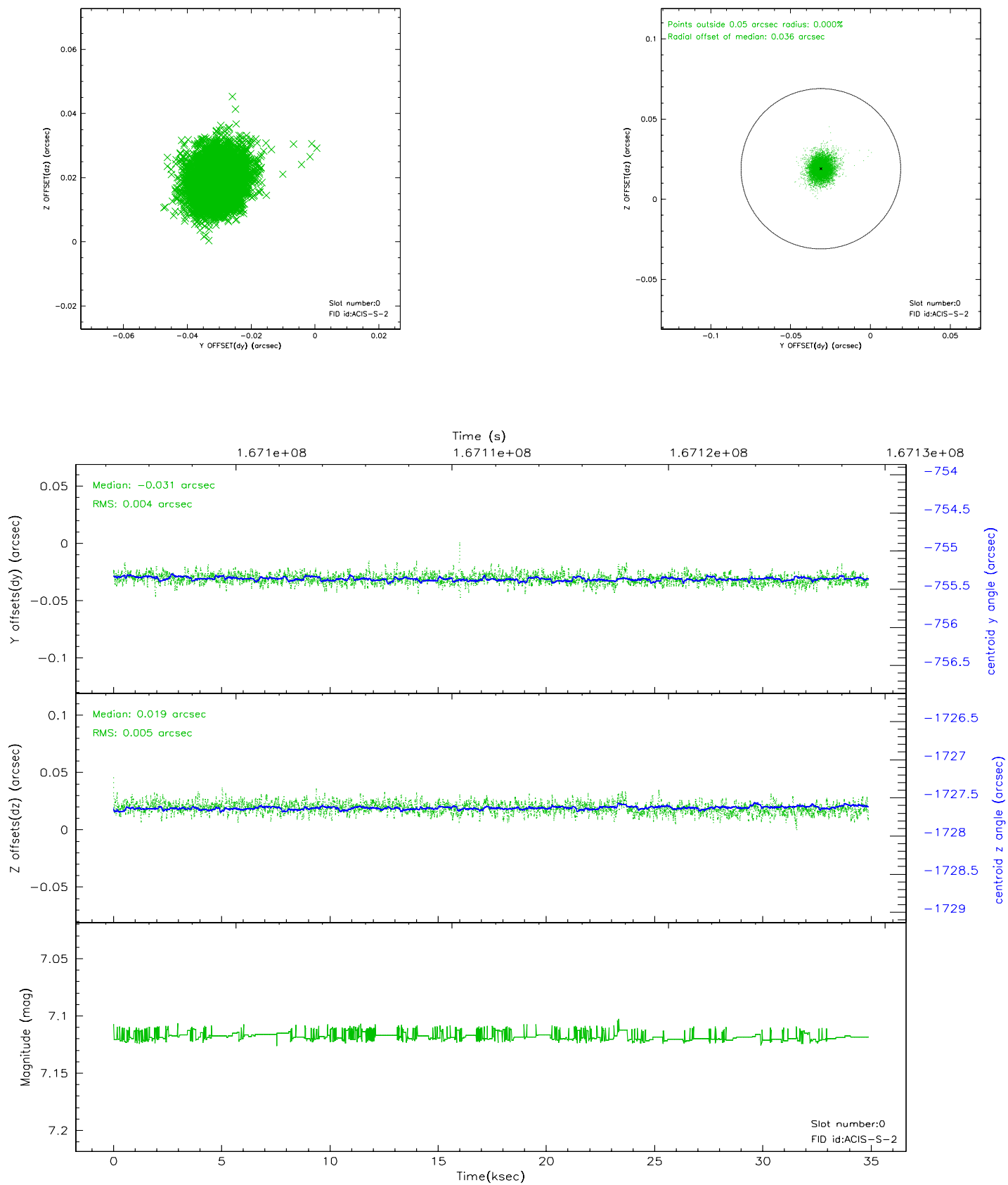


## 2.4.5 Slot 7

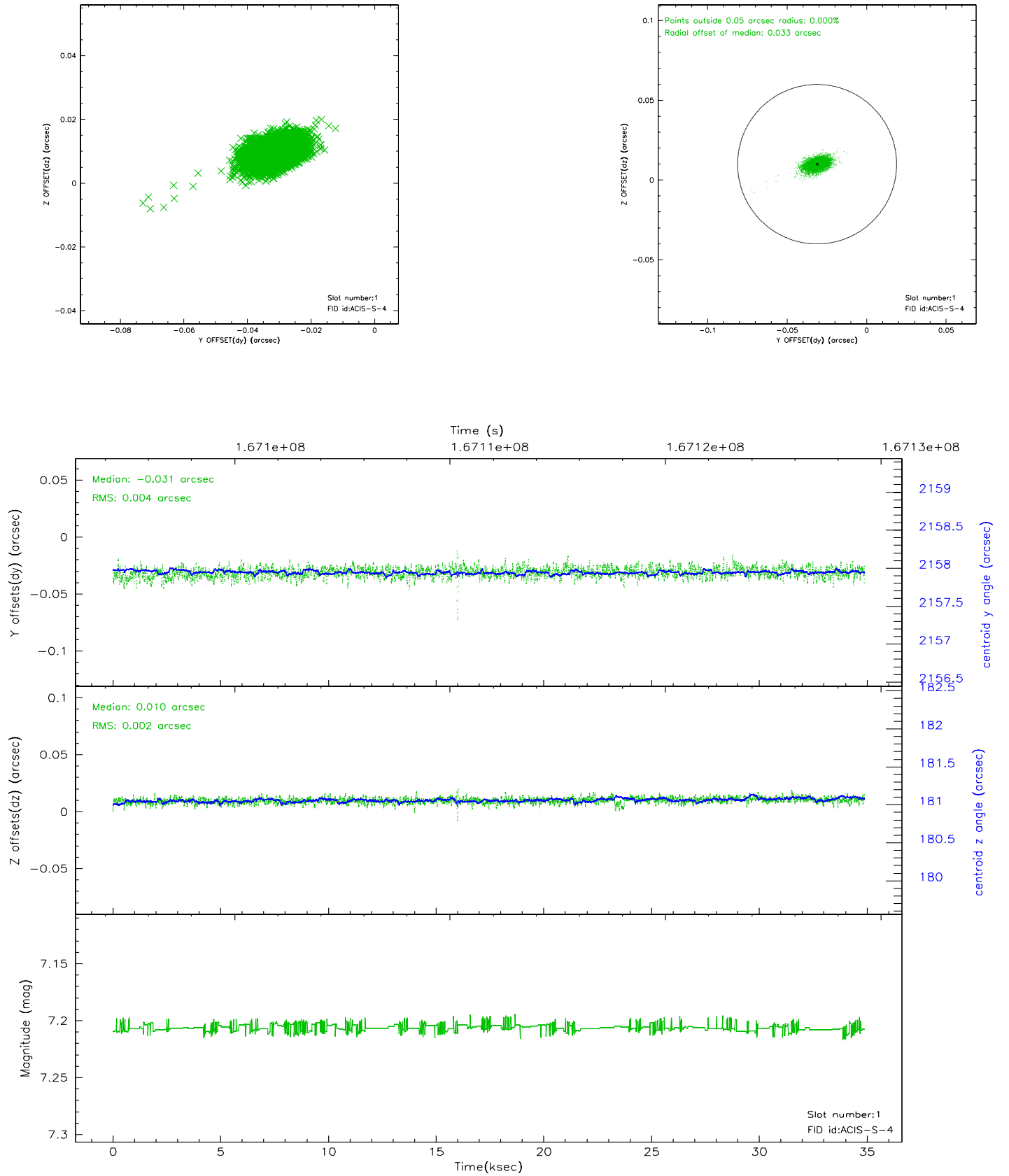


## 2.5 FID Slots

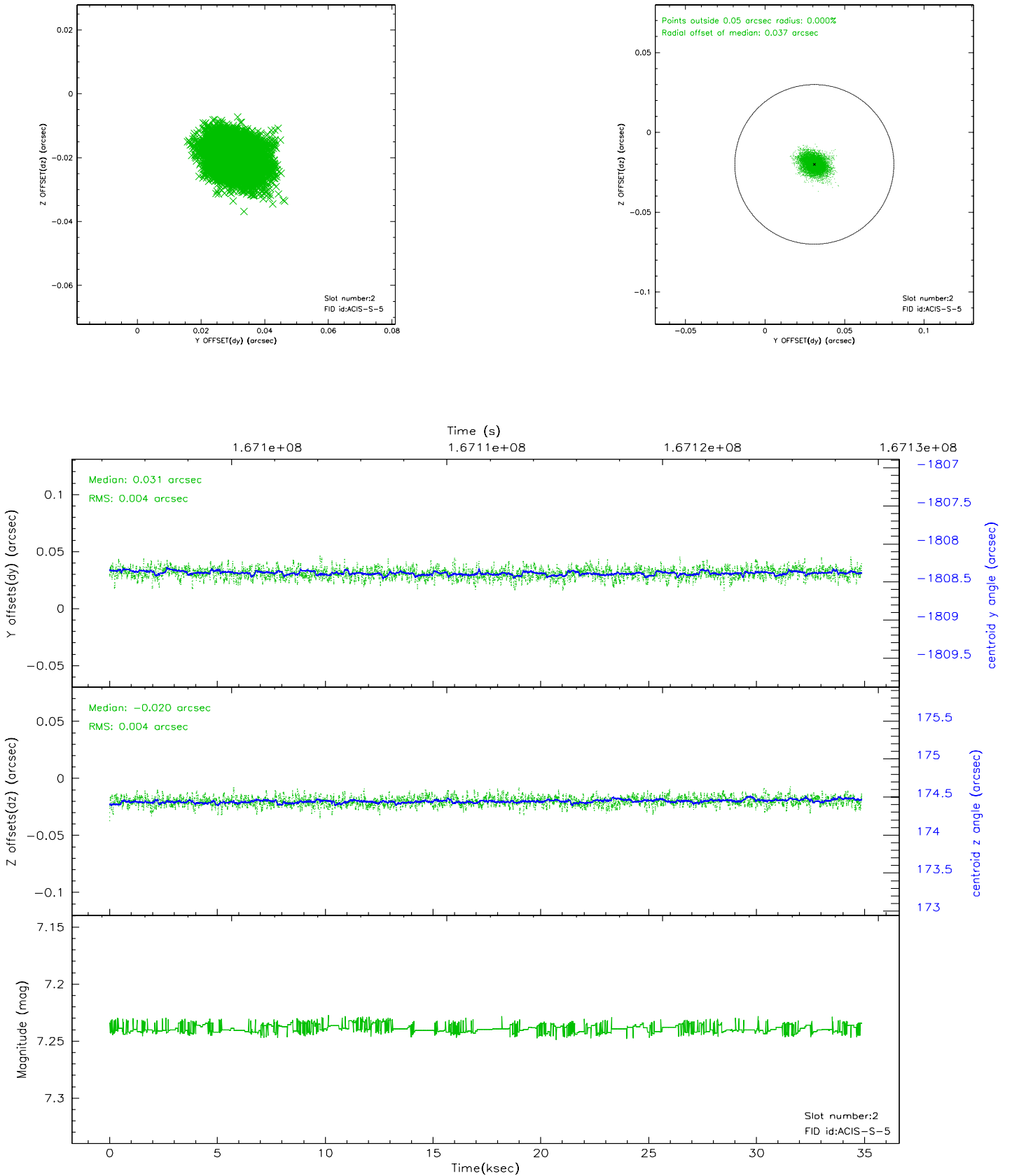
### 2.5.1 Slot 0



## 2.5.2 Slot 1

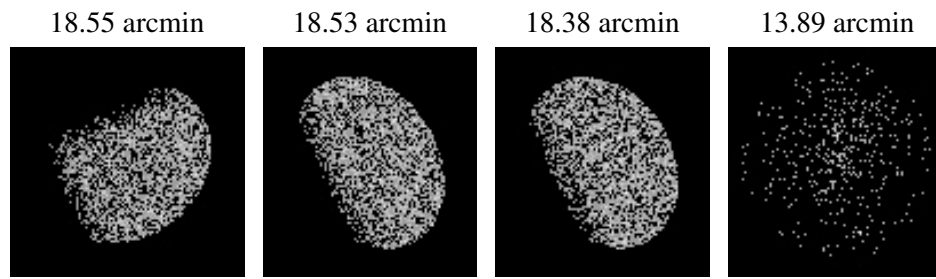


### 2.5.3 Slot 2





### 3 Point Sources



## A Summary

### A.1 Status

V&V Scientist	Beth Sundheim
V&V Date (YYYY-MM-DD)	2006.08.06
V&V Edition	1
V&V Disposition and Status	OK
V&V Charge Time	34.471

### A.2 Comments