

V&V Reference Report

L2 ASCDS Version : 7.6.8

Observation 4188 - L2 Version 001
Chandra X-Ray Center

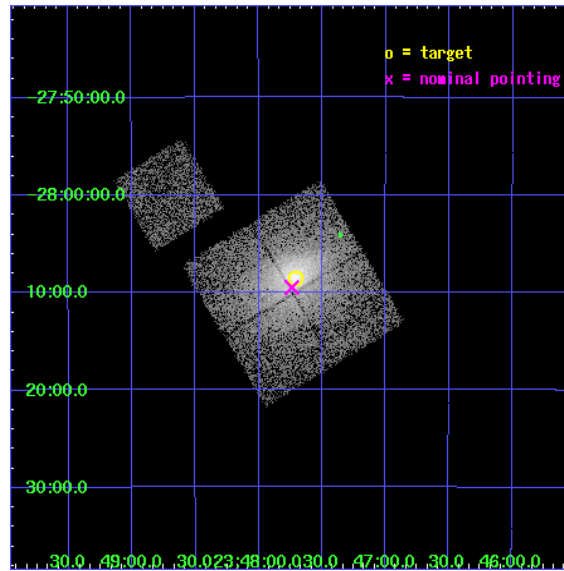
L2 Processing Date : Jul 1 2006

Contents

1	Front	2
2	OBI	3
2.1	OBI	3
2.1.1	Images	3
2.1.2	Bias	3
2.1.3	Parameters	4
2.1.4	Events	4
2.2	Compared Parameters	5
2.3	Aspect	6
2.4	Star Slots	9
2.4.1	Slot 3	9
2.4.2	Slot 4	10
2.4.3	Slot 5	11
2.4.4	Slot 6	12
2.4.5	Slot 7	13
2.5	FID Slots	14
2.5.1	Slot 0	14
2.5.2	Slot 1	15
2.5.3	Slot 2	16
3	Point Sources	17
A	Summary	18
A.1	Status	18
A.2	Comments	18

1 Front

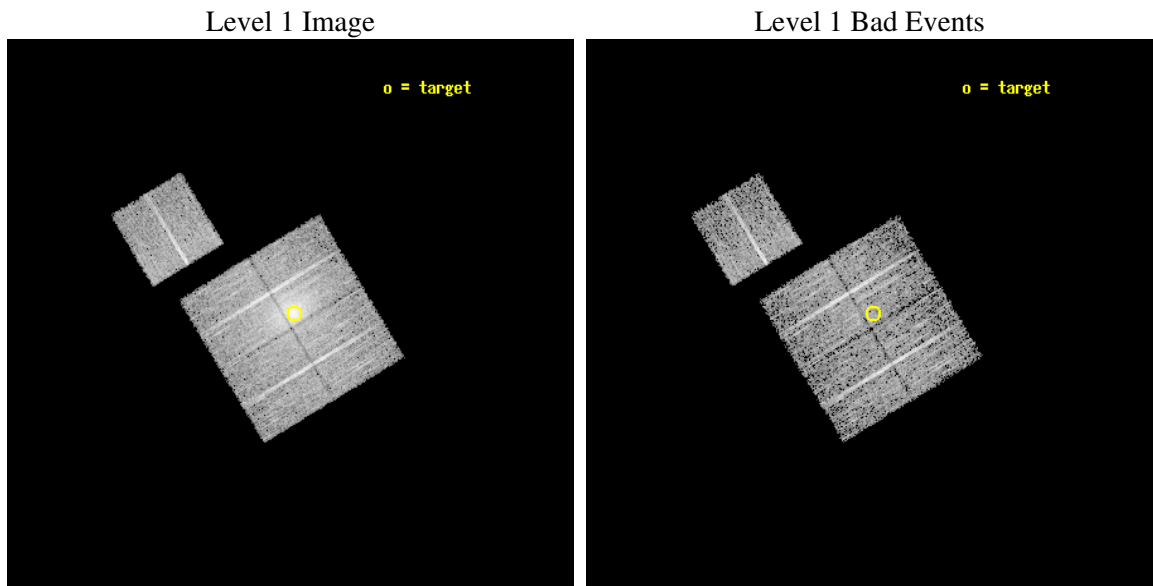
seq_num	800344
obs_id	4188
title	THE HIFLUGCS CLUSTER SURVEY: A CORNERSTONE FOR COSMOLOGY
observer	Dr. Craig Sarazin
object	A4038
dtcycle	0
cycle	P
ra_targ	356.928333
dec_targ	-28.143056
ra_nom	356.93461494854
dec_nom	-28.158251961019
roll_nom	328.86305650568
revision	2
ontime	6153.4999881685
livetime	6073.0999806823
ontime0	6153.4999881685
ontime1	6153.4999881685
ontime2	6153.4999881685
ontime3	6153.4999881685
ontime6	6153.4999881685
l2events	48973



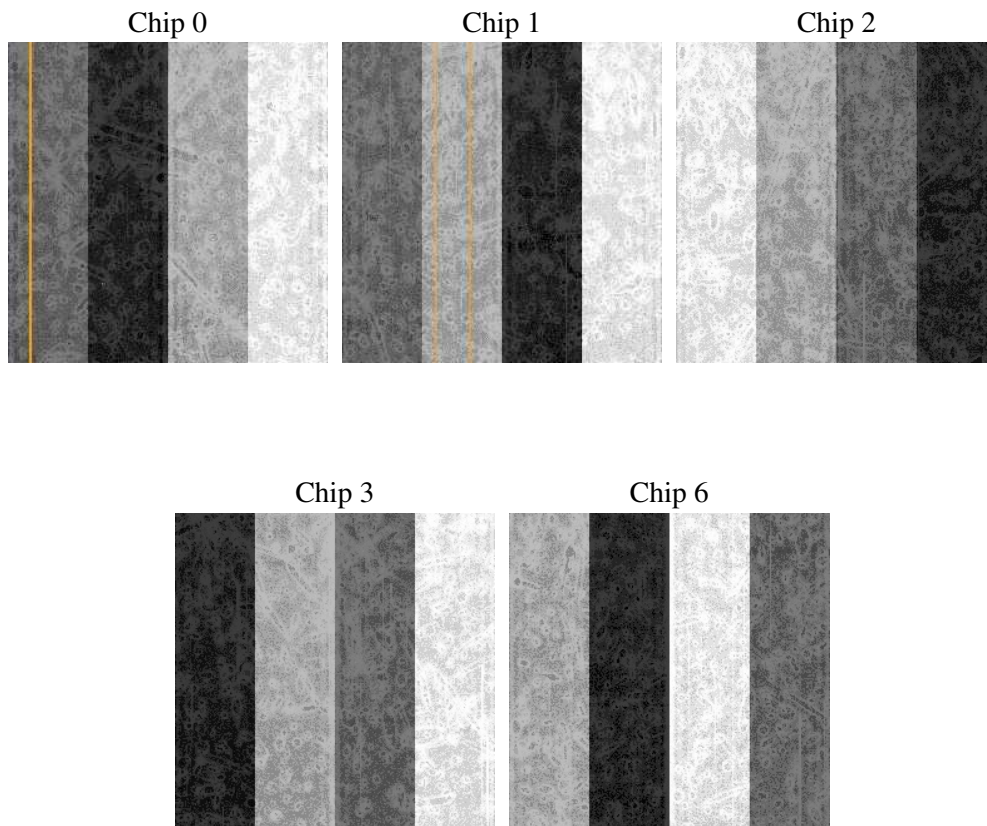
2 OBI

2.1 OBI

2.1.1 Images



2.1.2 Bias



2.1.3 Parameters

obi_num	1
ascdsver	7.6.8
caldsver	3.2.2
date	2006-07-01T21:42:50
revision	2

sched_exp_time	6000.729000
ontime	7770.8469044268
ontime0	7770.8469044268
ontime1	7770.8469343185
ontime2	7770.8469343185
ontime3	7770.8469044268
ontime6	7770.8469343185
l1events	246702

2.1.4 Events

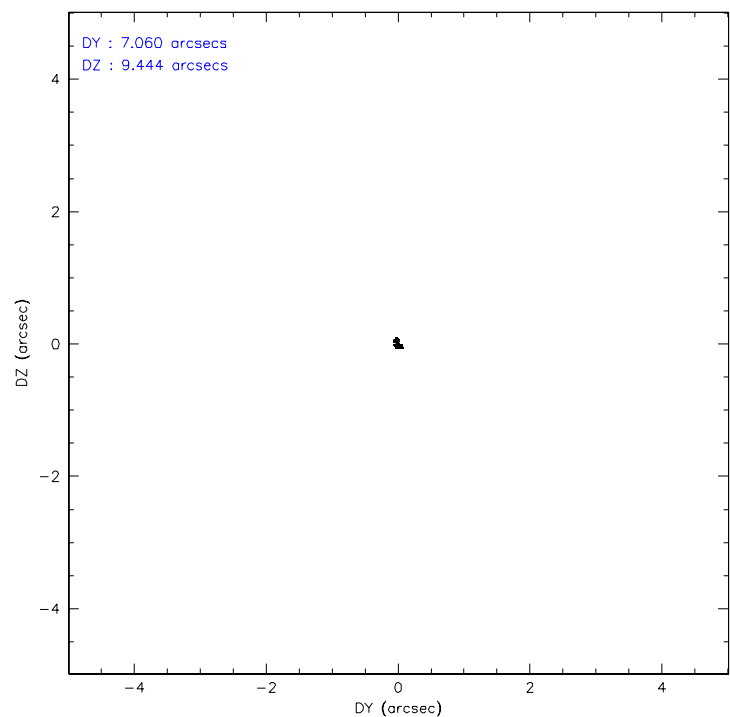
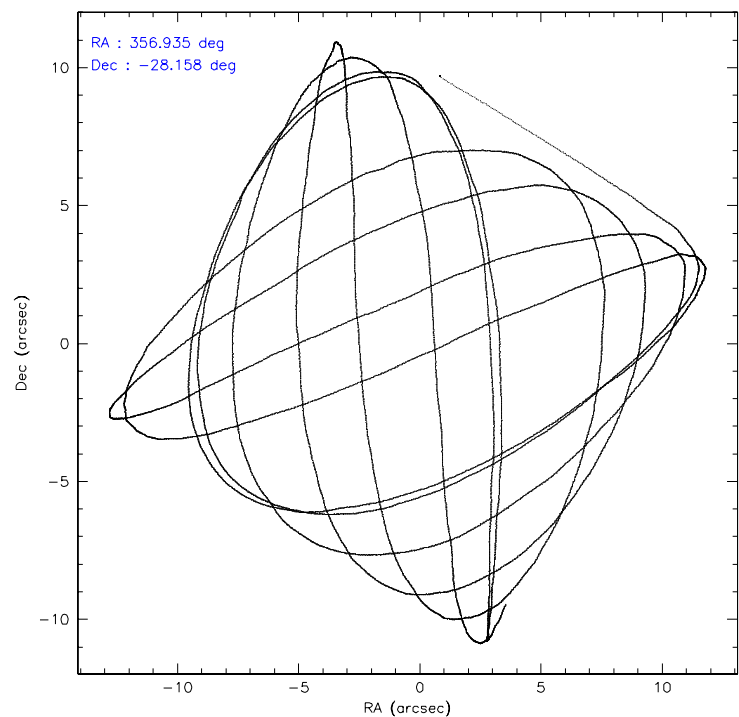
	ccd 0	ccd 1	ccd 2	ccd 3	ccd 6
level 1 events	44283	46959	53666	58333	43461
rejected events	36818	38060	41263	37638	39459
rejected %	83%	81%	76%	64%	90%

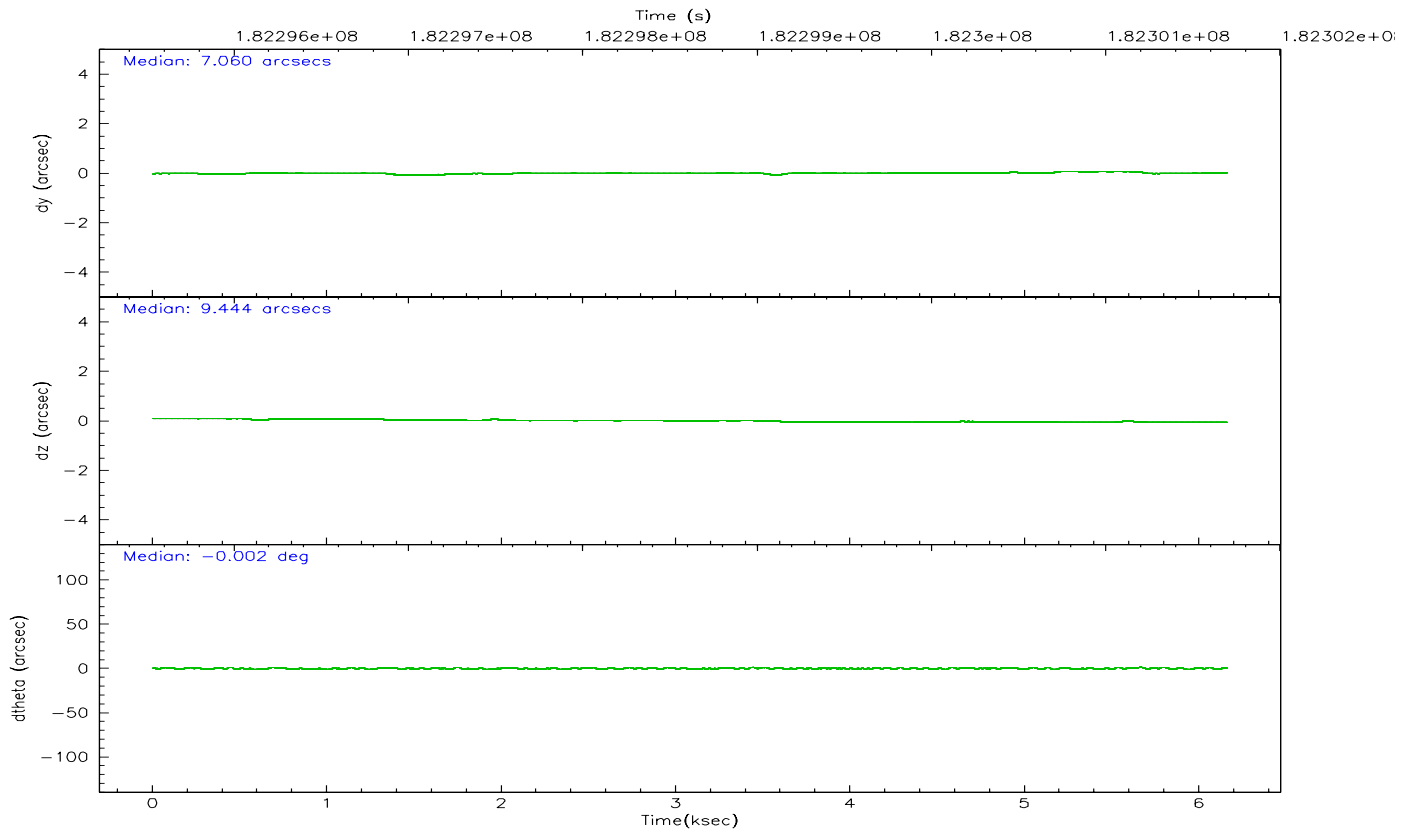
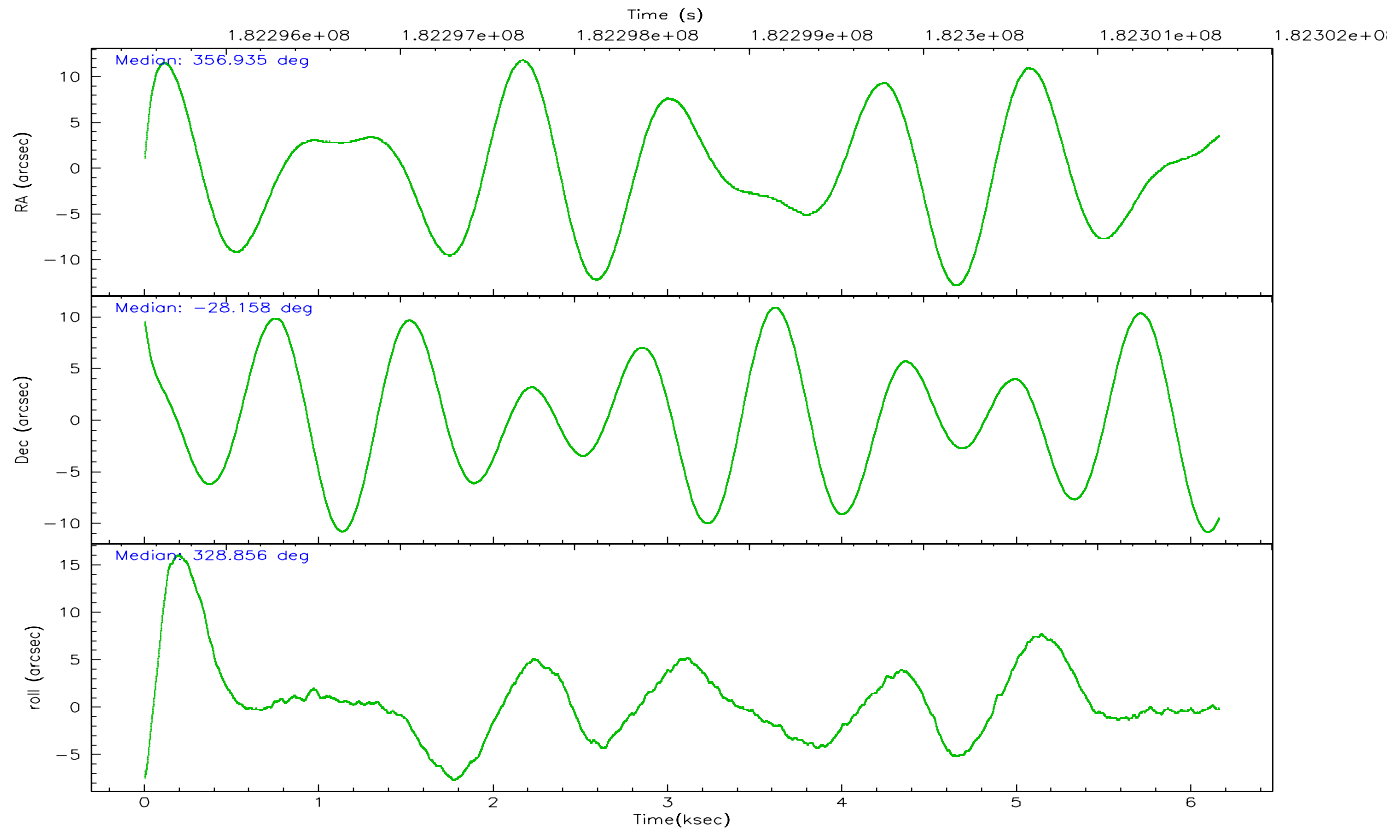
	ccd 0	ccd 1	ccd 2	ccd 3	ccd 6
grade 0 events	4980	6138	9455	16533	1985
	11%	13%	17%	28%	4%
grade 1 events	33	41	51	96	14
	0%	0%	0%	0%	0%
grade 2 events	1426	1507	1819	2465	952
	3%	3%	3%	4%	2%
grade 3 events	647	708	770	916	511
	1%	1%	1%	1%	1%
grade 4 events	575	706	719	954	509
	1%	1%	1%	1%	1%
grade 5 events	1502	1599	1390	1701	1660
	3%	3%	2%	2%	3%
grade 6 events	918	1026	888	1069	1000
	2%	2%	1%	1%	2%
grade 7 events	34202	35234	38574	34599	36830
	77%	75%	71%	59%	84%

2.2 Compared Parameters

Parameter	Planned	Actual	Parameter	Planned	Actual
Instrument	ACIS	ACIS	Obspar format version number	6	6
Detector	ACIS-01236	ACIS-01236	Obspar file type	PREDICTED	ACTUAL
Grating	NONE	NONE	Obspar update status	NONE	UPDATED
Data mode	VFAINT	VFAINT	On-chip summing requested	N	N
Observation mode	POINTING	POINTING	Subarray requested	NONE	NONE
Pointing RA	356.903511	356.9346149485399	Alternating exposures requested	N	N
Pointing Dec	-28.157824	-28.15825196101937	Primary exposure time	0.000000	3.1
Pointing Roll	328.639700	328.8630565056802			
SIM focus pos (mm)	-0.782348	-0.7809083437167272			
SIM defocus (mm)	0	0.001439871863259334			
SIM translation stage pos (mm)	-233.592463	-233.5874344608287			
SIM translation stage offset (mm)	0	-0.005018542100998502			
Observation start time	182295700.184000	182293914.71953			
Observation start date	2003-10-11T21:40:36	2003-10-11T21:11:54			
Observation end time	182301701.184000	182302015.29488			
Observation end date	2003-10-11T23:20:37	2003-10-11T23:26:55			
Read mode	TIMED	TIMED			

2.3 Aspect



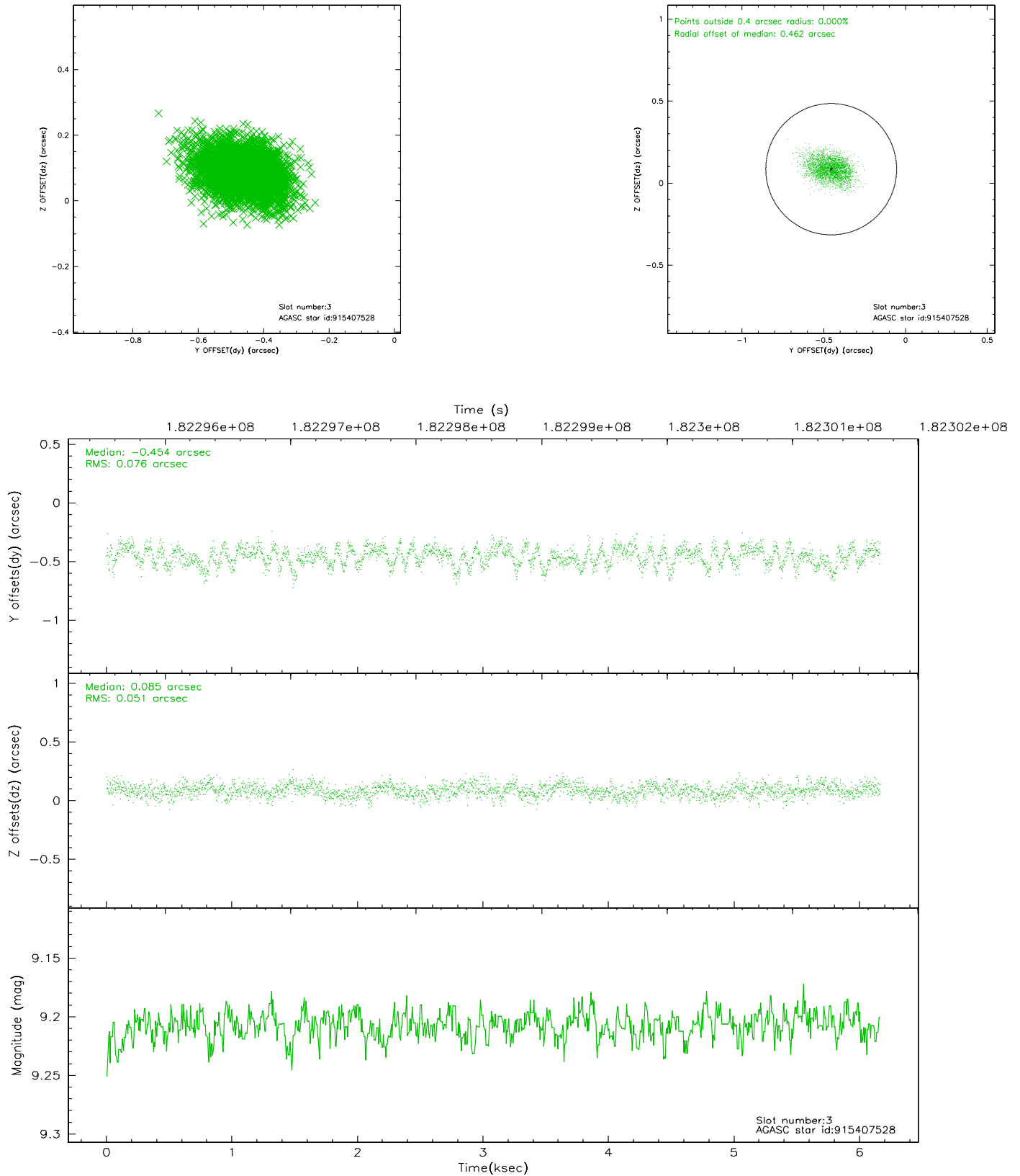


Slot Statistics

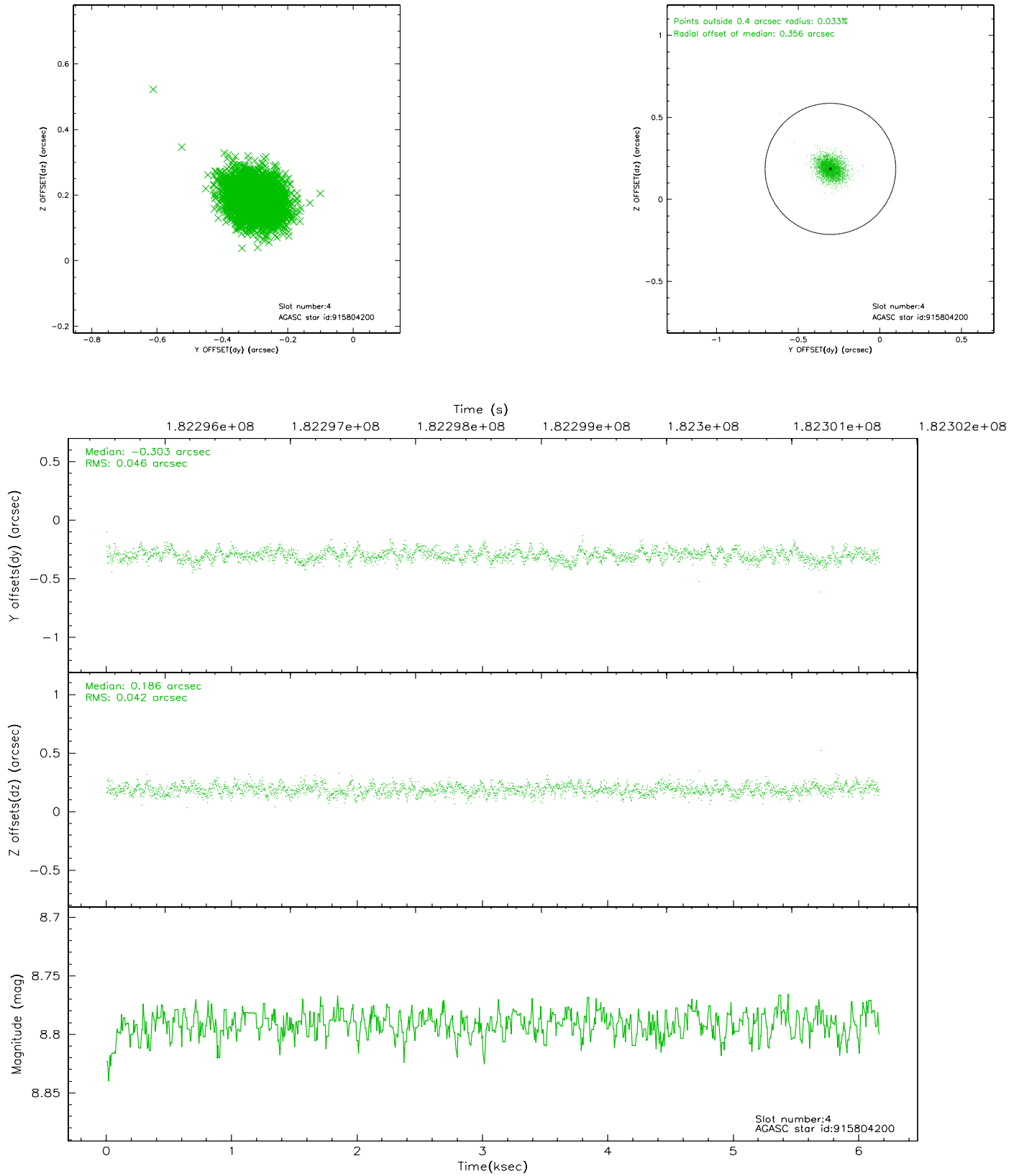
slot	status	id	mag	n_pts	med_dy	med_dz	dr1	dr2	ra	dec	mean_y	mean_z
0	FID	ACIS-I-1	7.24	1503	-0.030	0.070	0.007	0.011	0.000000	0.000000	932.59	-832.83
1	FID	ACIS-I-5	7.23	1503	-0.098	0.017	0.006	0.009	0.000000	0.000000	-1815.05	1064.12
2	FID	ACIS-I-6	7.25	1501	0.037	-0.017	0.007	0.011	0.000000	0.000000	397.16	1709.68
3	GUIDE	915407528	9.21	3003	-0.454	0.085	0.097	0.159	356.735051	-27.321188	-2028.01	2291.27
4	GUIDE	915804200	8.79	3005	-0.303	0.186	0.065	0.108	356.699199	-28.786294	626.67	-2266.79
5	GUIDE	915940872	8.00	3005	-0.387	0.061	0.059	0.094	357.438295	-28.341635	1793.35	313.31
6	GUIDE	915809360	8.98	3003	1.412	-0.366	0.064	0.105	357.210134	-28.120770	764.58	619.45
7	GUIDE	915807248	9.94	1501	-0.531	0.064	0.135	0.224	357.192532	-27.548911	-352.69	2351.58

2.4 Star Slots

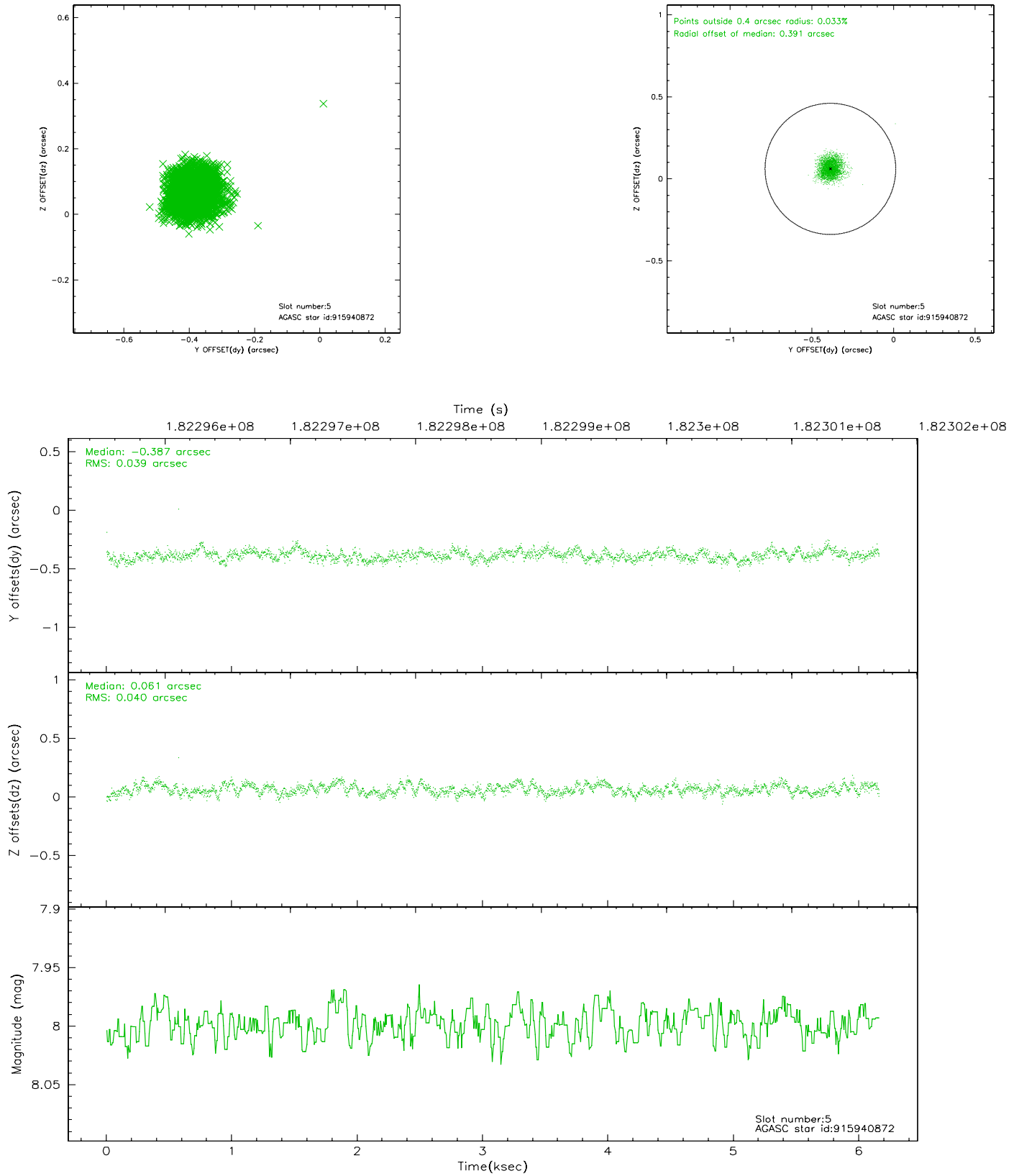
2.4.1 Slot 3



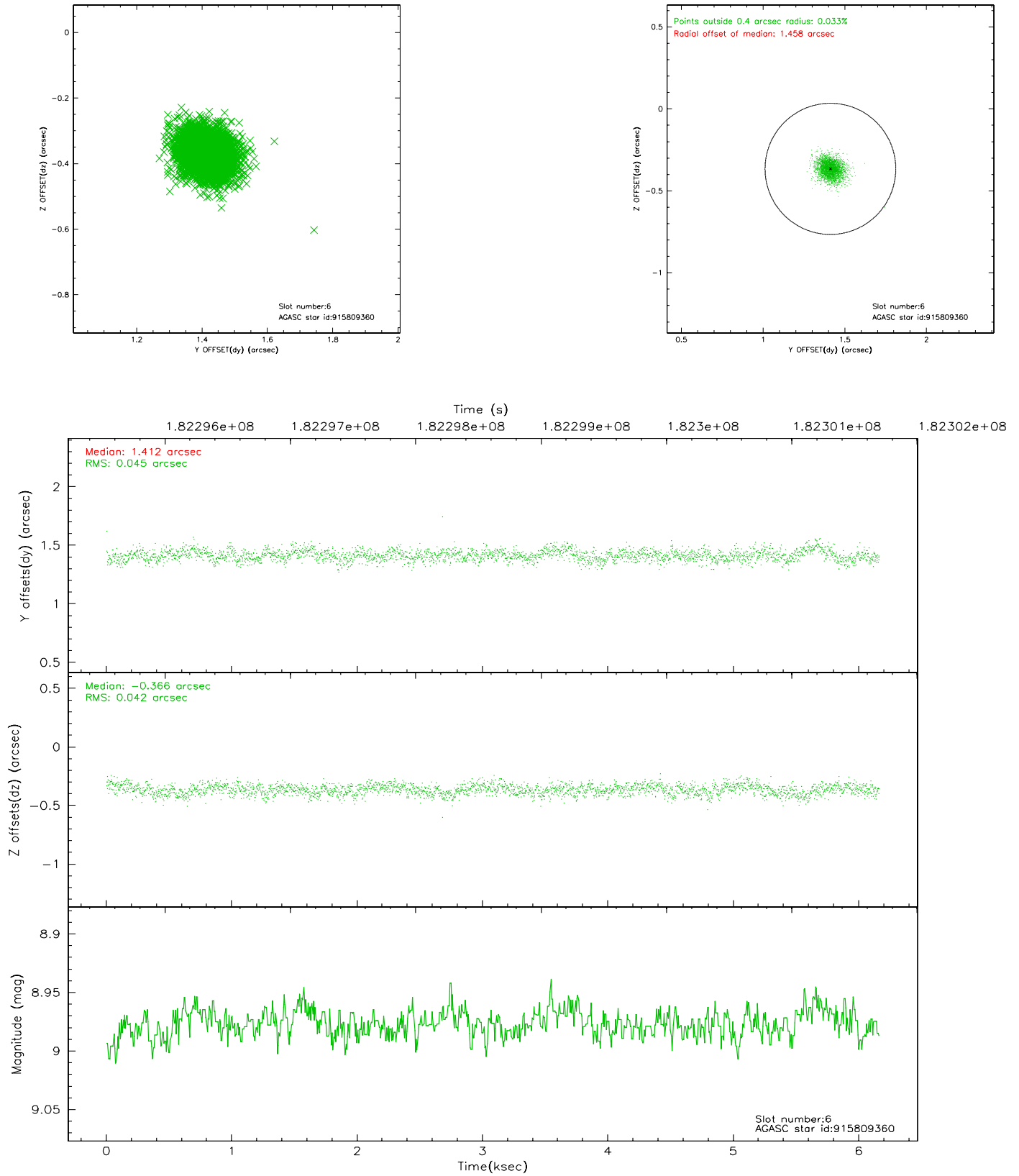
2.4.2 Slot 4



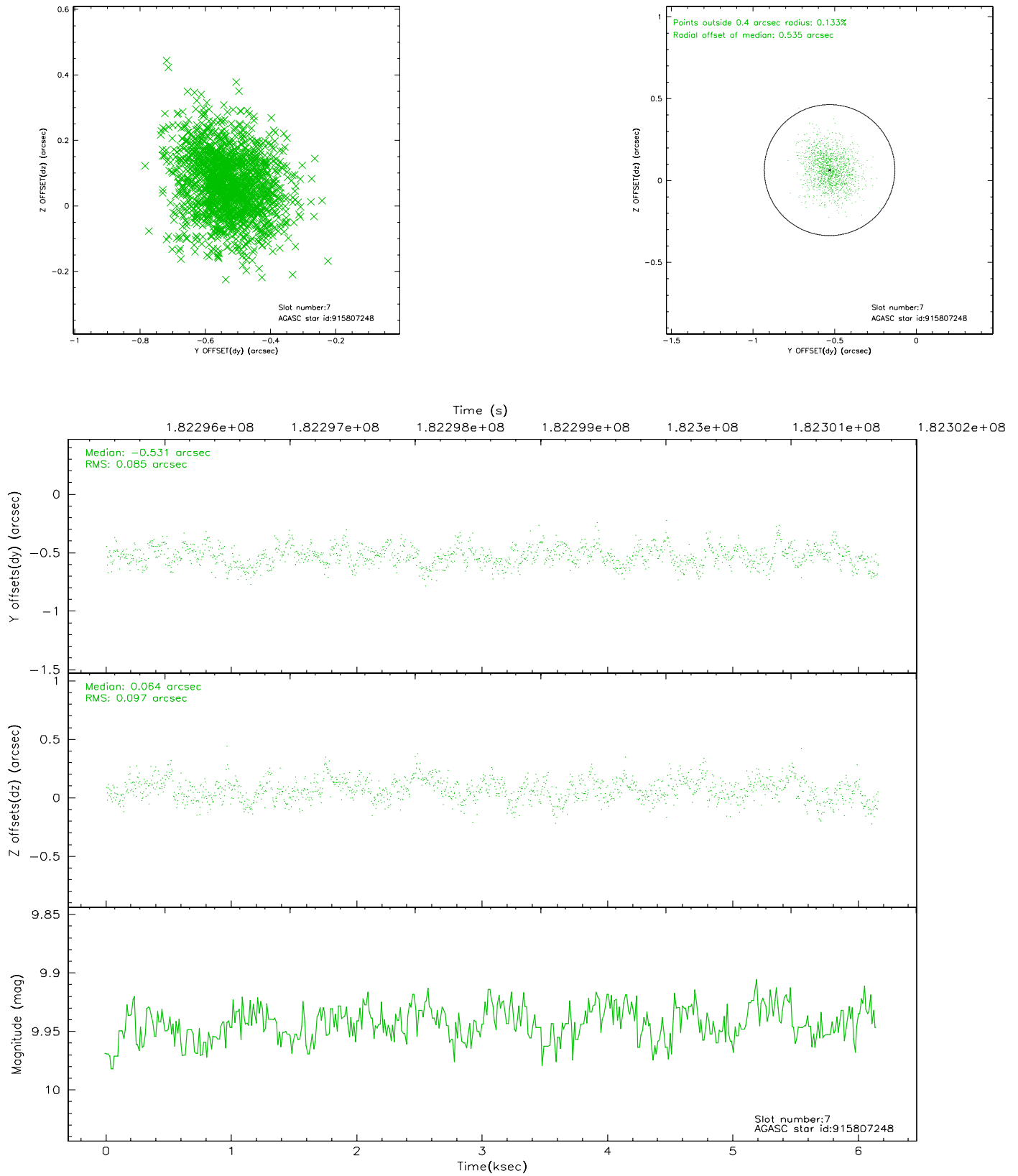
2.4.3 Slot 5



2.4.4 Slot 6

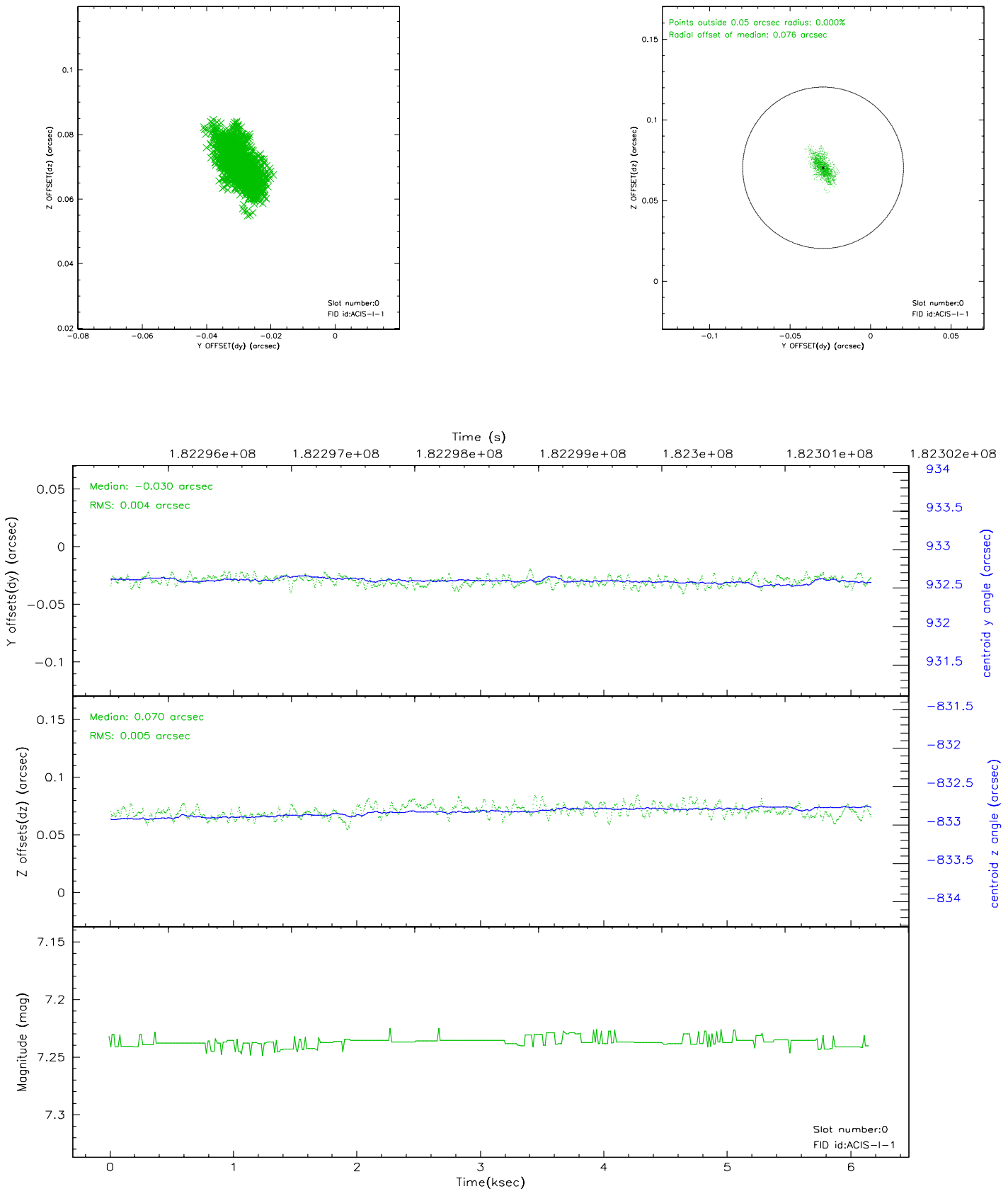


2.4.5 Slot 7

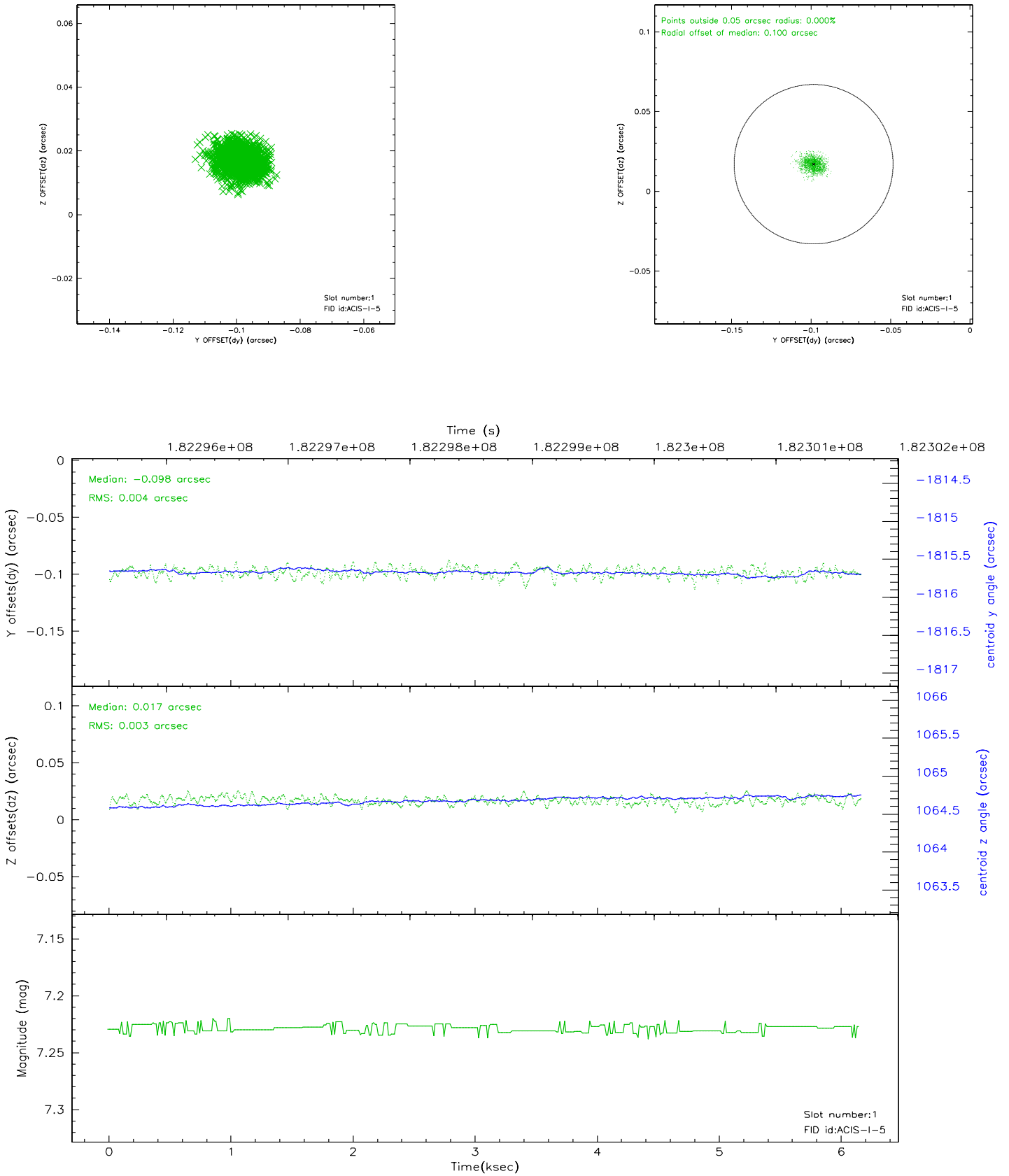


2.5 FID Slots

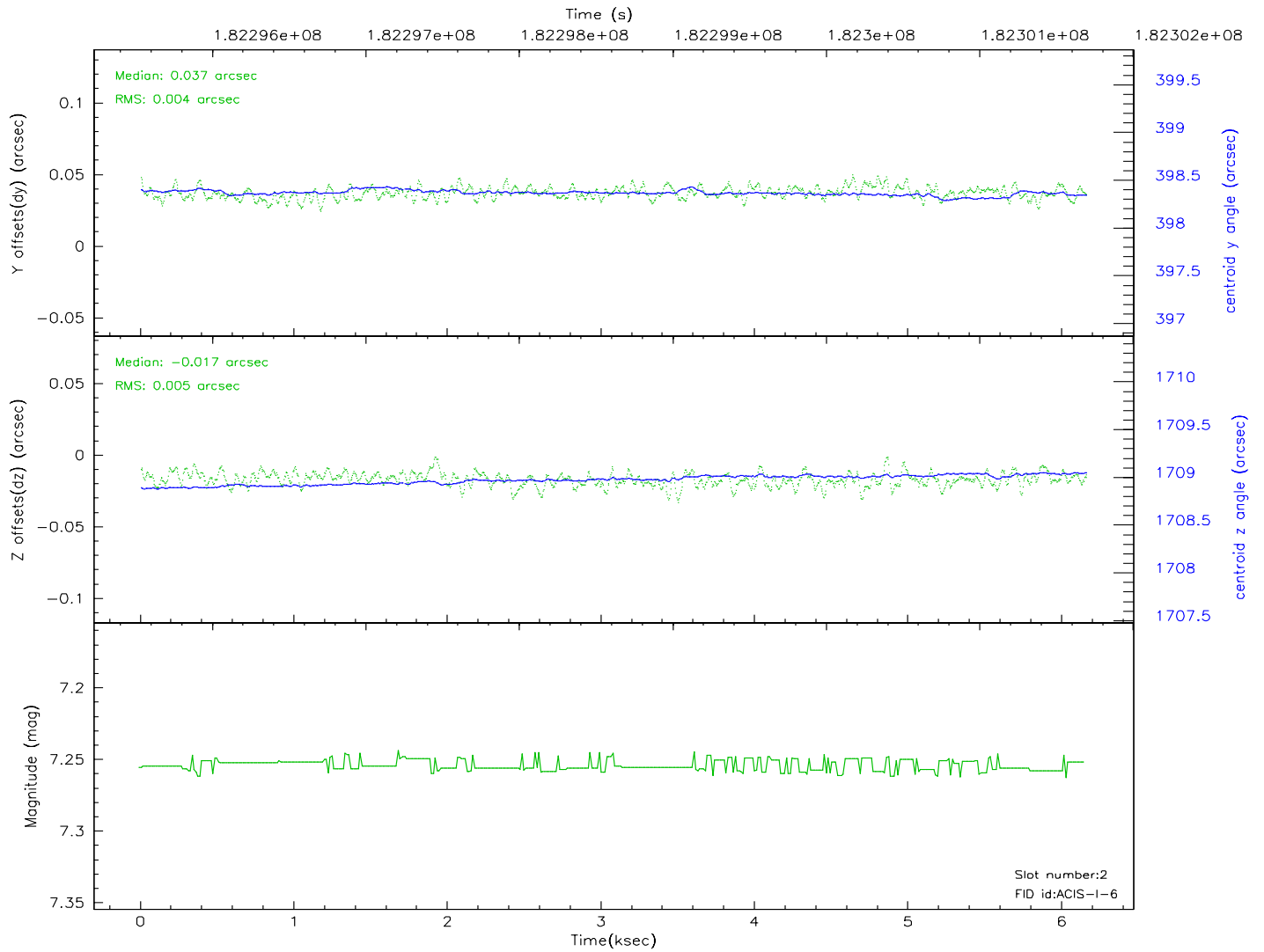
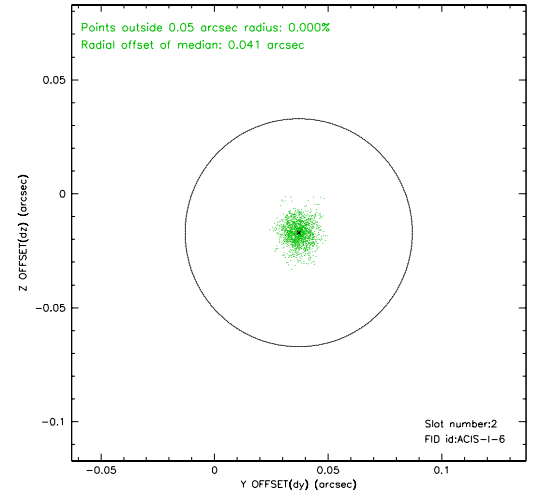
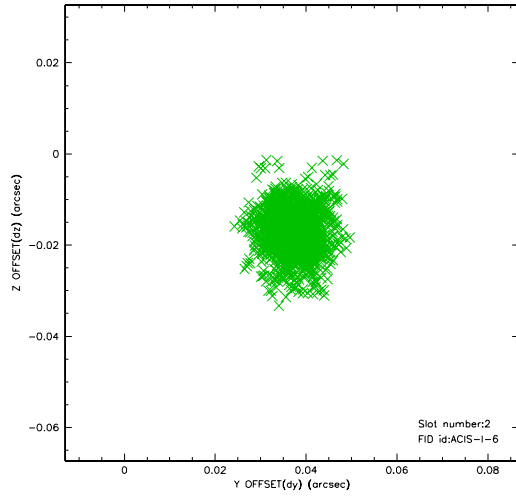
2.5.1 Slot 0



2.5.2 Slot 1



2.5.3 Slot 2



3 Point Sources

7.34 arcmin



A Summary

A.1 Status

V&V Scientist	Beth Sundheim
V&V Date (YYYY-MM-DD)	2006.07.03
V&V Edition	1
V&V Disposition and Status	OK
V&V Charge Time	6.153

A.2 Comments