

V&V Reference Report

L2 ASCDS Version : 8.4.5

Observation 4187 - L2 Version 3
Chandra X-Ray Center

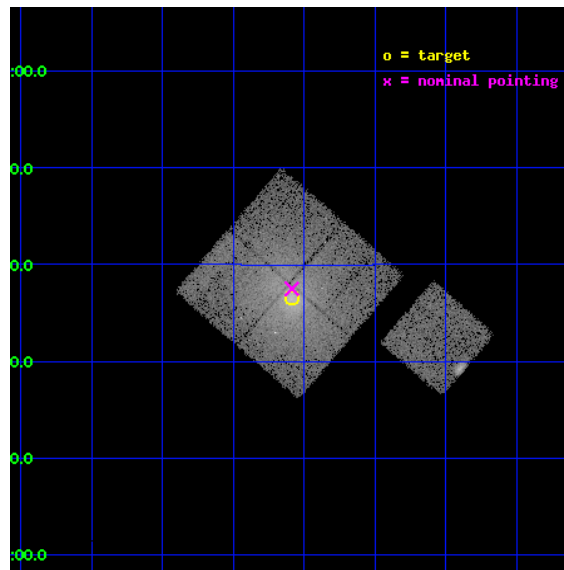
L2 Processing Date : Oct 26 2012

Contents

1	Front	2
2	OBI	3
2.1	OBI	3
2.1.1	Images	3
2.1.2	Bias	3
2.1.3	Parameters	4
2.1.4	Events	4
2.2	Compared Parameters	5
2.3	Aspect	6
2.4	Star Slots	9
2.4.1	Slot 3	9
2.4.2	Slot 4	10
2.4.3	Slot 5	11
2.4.4	Slot 6	12
2.4.5	Slot 7	13
2.5	FID Slots	14
2.5.1	Slot 0	14
2.5.2	Slot 1	15
2.5.3	Slot 2	16
A	Summary	17
A.1	Status	17
A.2	Comments	17

1 Front

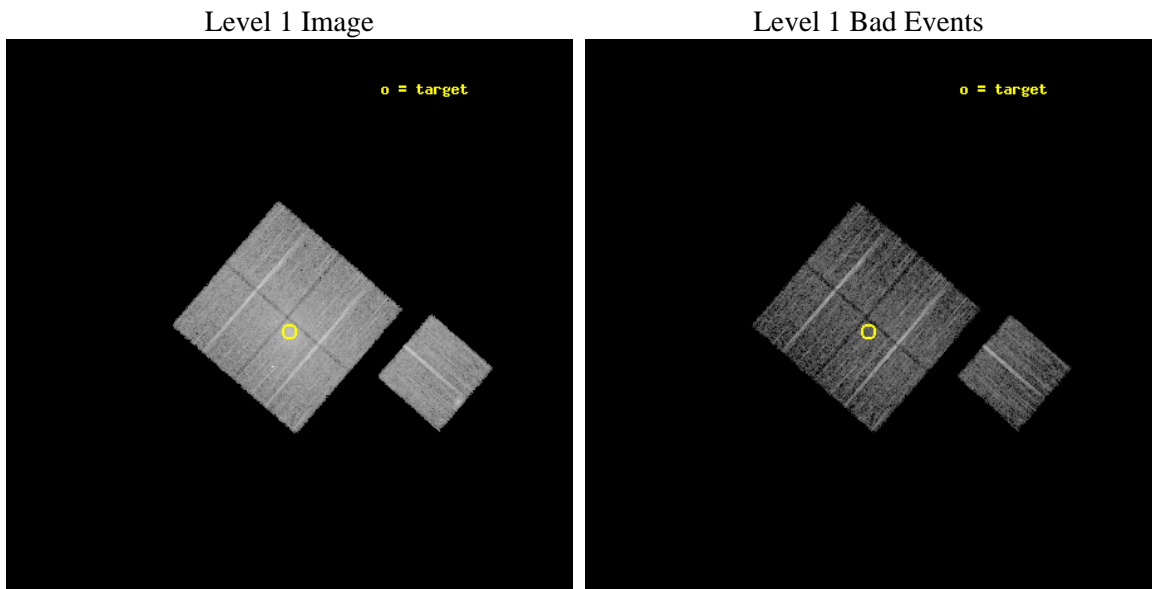
seq_num	800343	Sequence number
obs_id	4187	Observation id
title	THE HIFLUGCS CLUSTER SURVEY: A CORNERSTONE FOR COSMOLOGY	Proposal
observer	Dr. CRAIG SARAZIN	Principal investigator
object	A2063	Source name
dtcycle	0	
cycle	P	events from which exps? Prim/Second/Both
ra_targ	230.772292	Observer's specified target RA [deg]
dec_targ	8.608889	Observer's specified target Dec [deg]
ra_nom	230.77166447544	Nominal RA [deg]
dec_nom	8.6250755766121	Nominal Dec [deg]
roll_nom	130.9516227983	Nominal Roll [deg]
revision	3	Processing version of data
ontime	8893.0997955501	Sum of GTIs [s]
livetime	8776.9048997164	Livetime [s]
ontime0	8892.9766755402	Sum of GTIs [s]
ontime1	8893.0177155435	Sum of GTIs [s]
ontime2	8893.0587555468	Sum of GTIs [s]
ontime3	8893.0997955501	Sum of GTIs [s]
ontime6	8889.7946453989	Sum of GTIs [s]
l2events	78156	Number of level 2 events



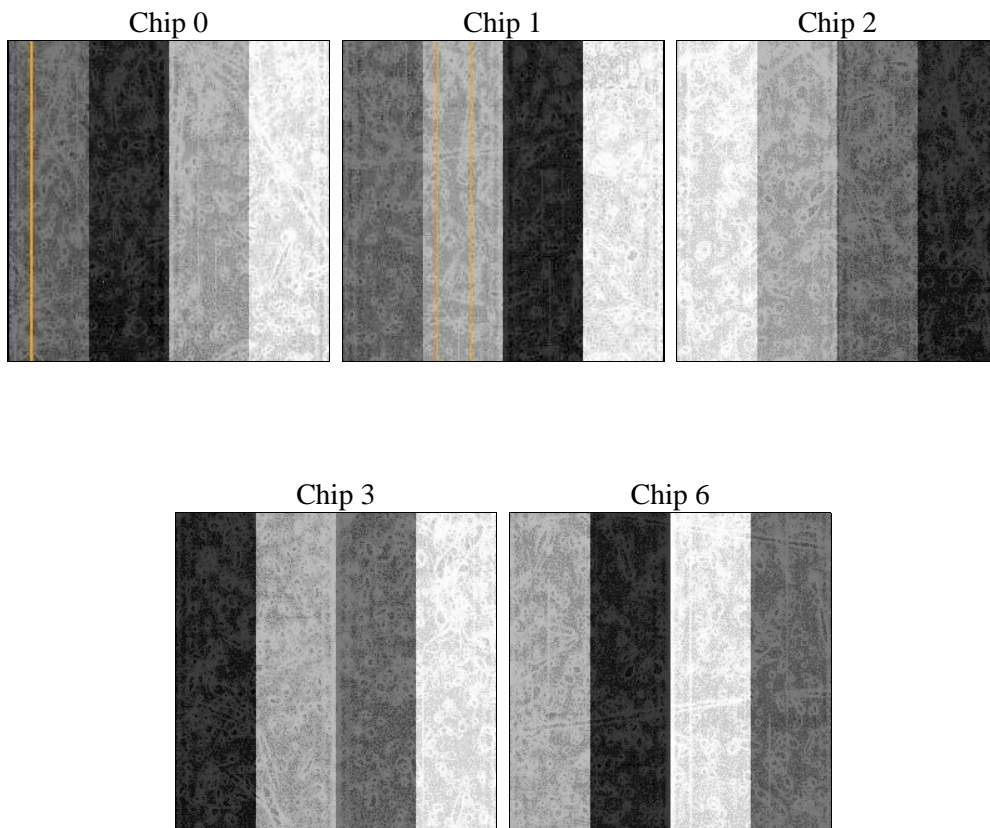
2 OBI

2.1 OBI

2.1.1 Images



2.1.2 Bias



2.1.3 Parameters

obi_num	1	Obi number	sched_exp_time	8775.493000	[s] Scheduled observation exposure time
ascdsver	8.4.5	Processing system revision	ontime	8893.0997955501	Sum of GTIs [s]
caldsver	4.5.2	 	ontime0	8892.9766755402	Sum of GTIs [s]
date	2012-10-26T17:19:48	Date and time of file creation	ontime1	8893.0177155435	Sum of GTIs [s]
revision	3	Processing version of data	ontime2	8893.0587555468	Sum of GTIs [s]
			ontime3	8893.0997955501	Sum of GTIs [s]
			ontime6	8889.7946453989	Sum of GTIs [s]
			l1events	294584	Number of level 1 events

2.1.4 Events

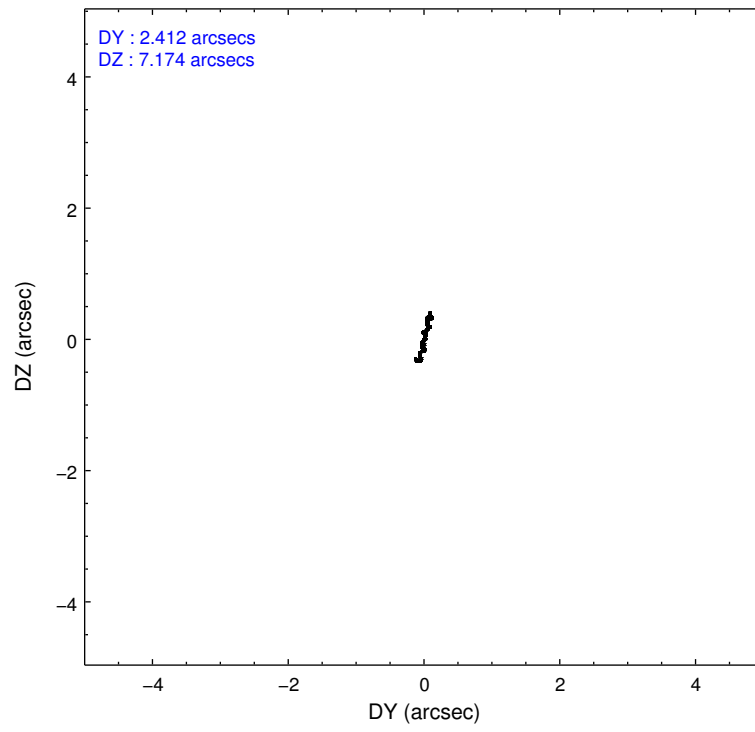
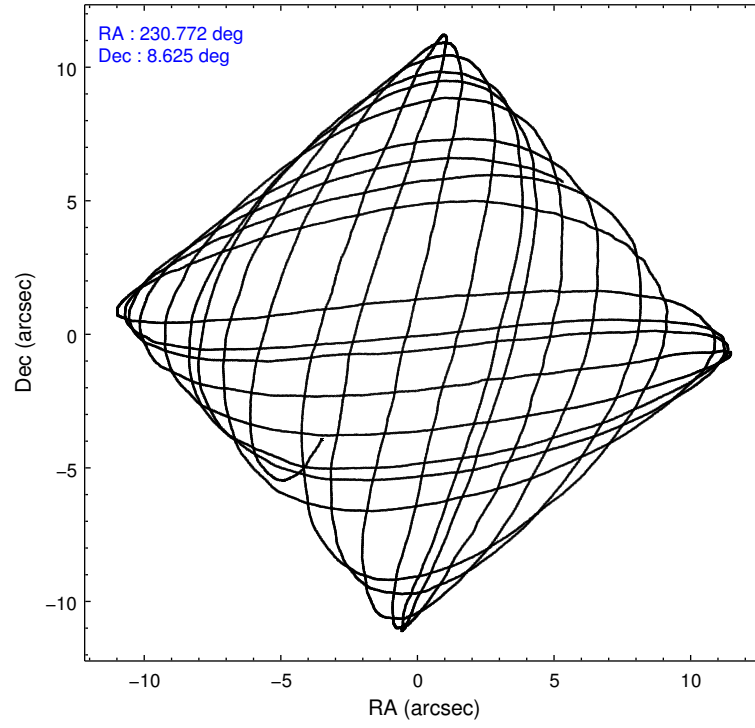
	ccd 0	ccd 1	ccd 2	ccd 3	ccd 6
level 1 events	54019	55511	60941	69594	54519
rejected events	40033	37204	45094	43688	43323
rejected %	74%	67%	73%	62%	79%

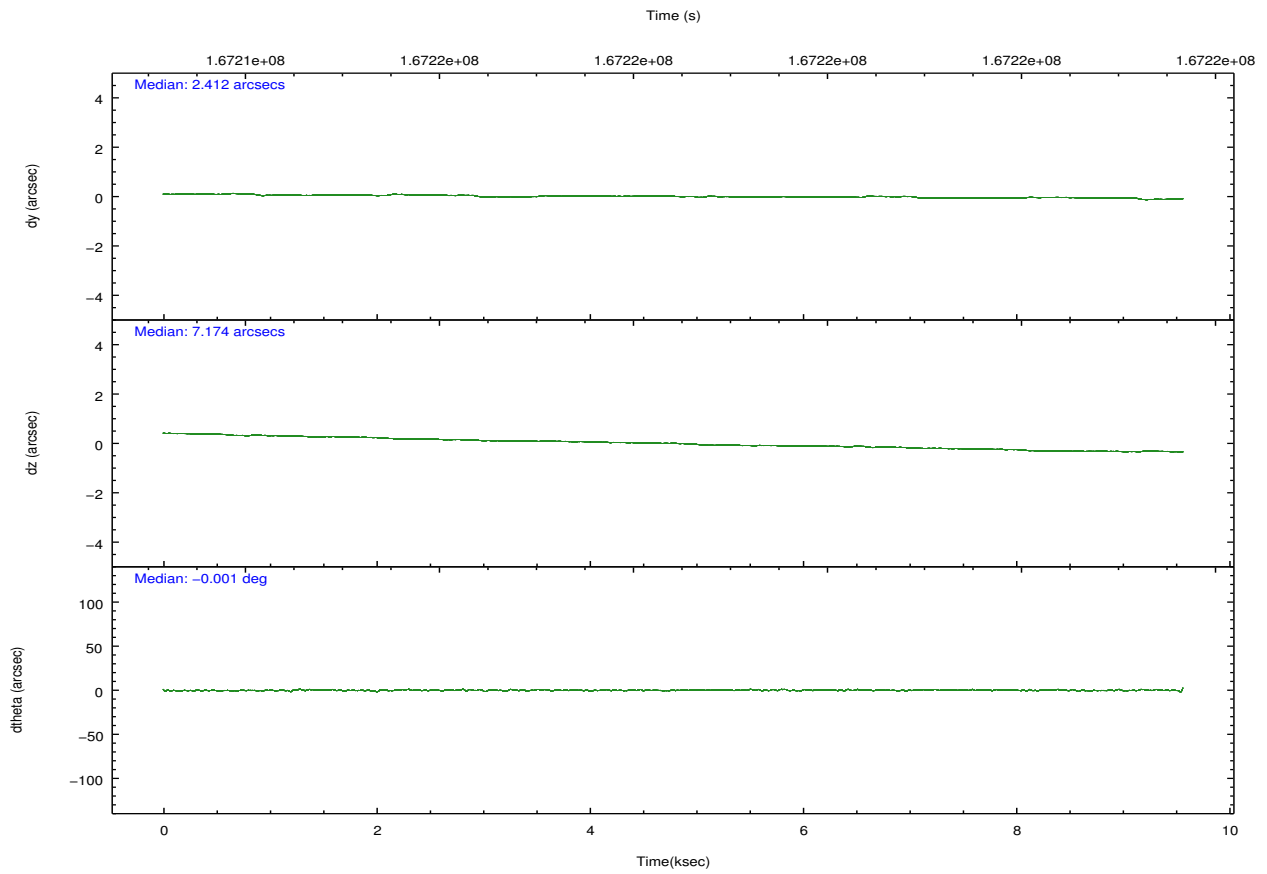
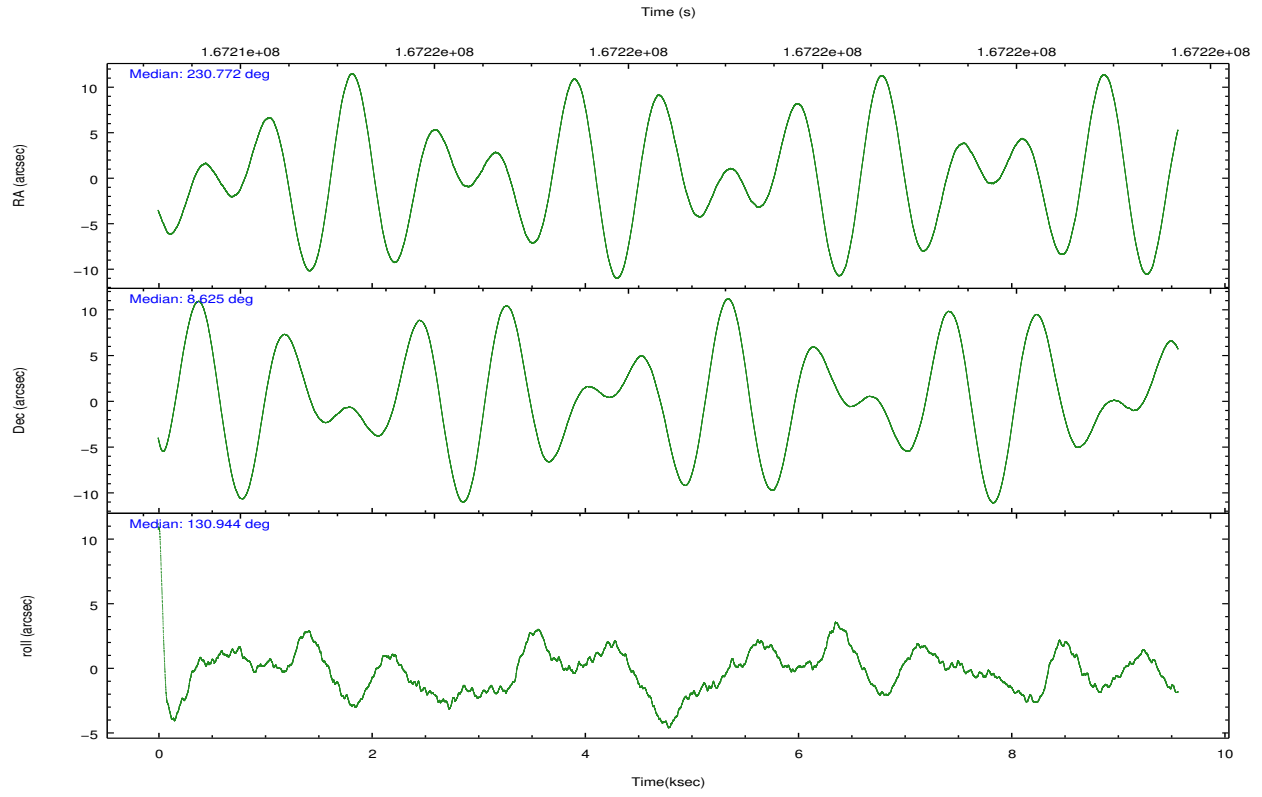
	ccd 0	ccd 1	ccd 2	ccd 3	ccd 6
grade 0 events	8921	12421	10699	19034	6593
	16%	22%	17%	27%	12%
grade 1 events	50	55	66	102	43
	0%	0%	0%	0%	0%
grade 2 events	2012	2455	2139	2997	1685
	3%	4%	3%	4%	3%
grade 3 events	847	988	888	1148	753
	1%	1%	1%	1%	1%
grade 4 events	818	971	874	1153	749
	1%	1%	1%	1%	1%
grade 5 events	1575	1824	1563	1955	1808
	2%	3%	2%	2%	3%
grade 6 events	1399	1494	1260	1596	1427
	2%	2%	2%	2%	2%
grade 7 events	38397	35303	43452	41609	41461
	71%	63%	71%	59%	76%

2.2 Compared Parameters

Parameter	Planned	Actual	Parameter	Planned	Actual
Instrument	ACIS	ACIS	Obspar format version number	7	7
Detector	ACIS-01236	ACIS-01236	Obspar file type	PREDICTED	ACTUAL
Grating	NONE	NONE	Obspar update status	NONE	UPDATED
Data mode	VFAINT	VFAINT	Number of optional ACIS chips dropped	0	0
Observation mode	POINTING	POINTING	On-chip summing requested	N	N
[deg] Pointing RA	230.797942	230.7716644754446	Subarray requested	NONE	NONE
[deg] Pointing Dec	8.616220	8.625075576612142	Alternating exposures requested	N	N
[deg] Pointing Roll	130.738972	130.9516227982981	[s] Primary exposure time	0.000000	3.1
[mm] SIM focus pos	-0.782348	-0.7809083437167272			
[mm] SIM defocus	0	0.001439871863259334			
[mm] SIM translation stage pos	-233.592463	-233.5874344608287			
[mm] SIM translation stage offset	0	-0.005018542100998502			
[s] Observation start time (MET)	167214416.184000	167213153.1394			
Observation start date	2003-04-20T08:25:52	2003-04-20T08:05:53			
[s] Observation end time (MET)	167223192.184000	167223506.66483			
Observation end date	2003-04-20T10:52:08	2003-04-20T10:58:26			
Read mode	TIMED	TIMED			

2.3 Aspect



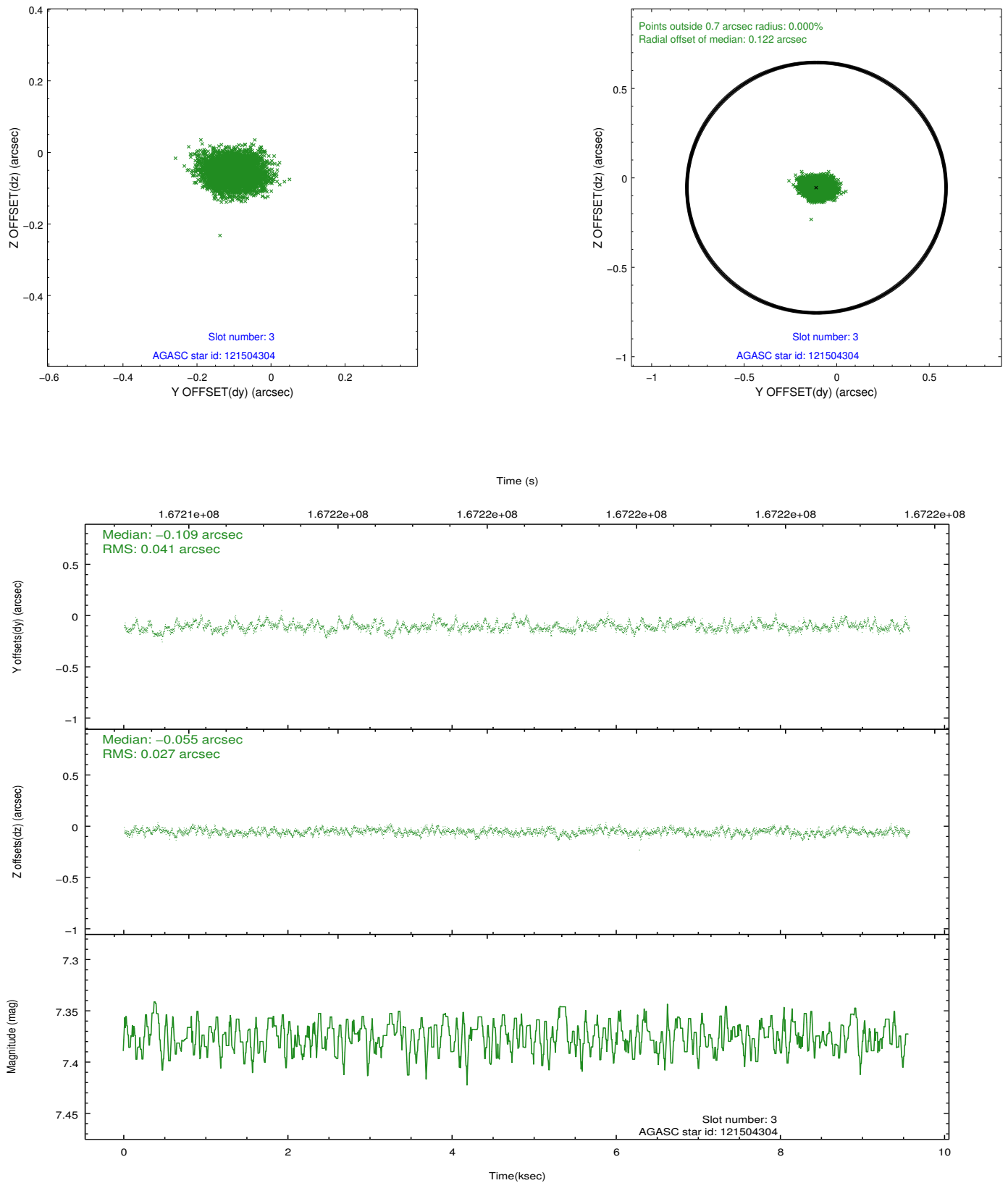


Slot Statistics

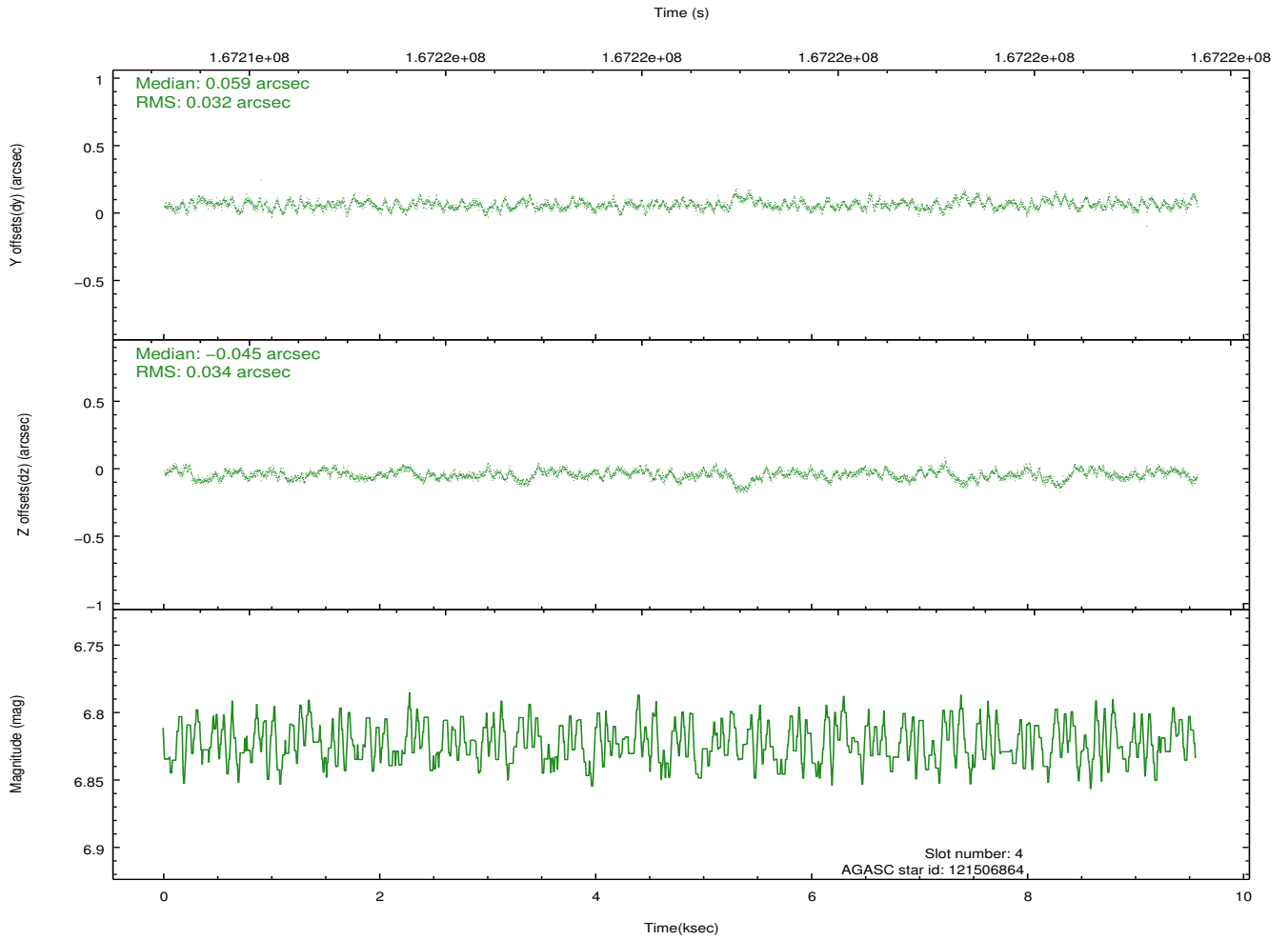
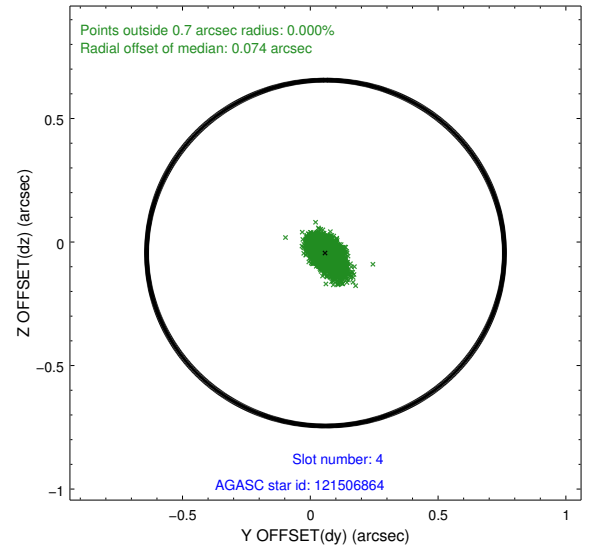
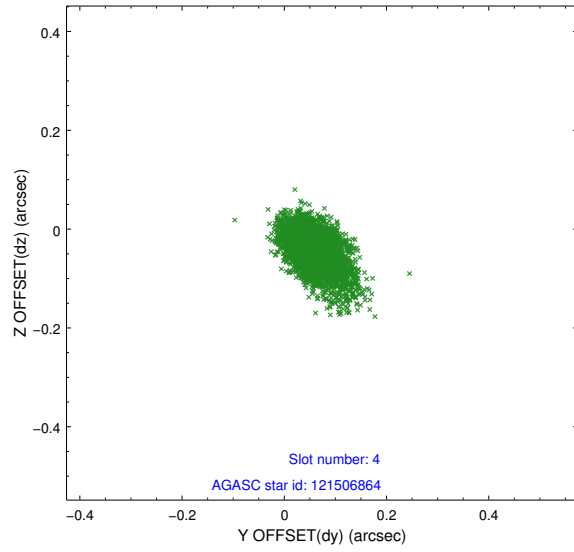
slot	status	id	mag	n_pts	med_dy	med_dz	dr1	dr2	ra	dec	mean_y	mean_z
0	FID	ACIS-I-1	7.25	2334	0.009	0.012	0.010	0.016	0.000000	0.000000	937.39	-830.57
1	FID	ACIS-I-5	7.24	2334	-0.074	0.055	0.006	0.011	0.000000	0.000000	-1810.46	1066.73
2	FID	ACIS-I-6	7.26	2334	-0.027	0.003	0.010	0.016	0.000000	0.000000	402.33	1711.78
3	GUIDE	121504304	7.38	4668	-0.109	-0.055	0.051	0.088	230.179446	8.913720	2248.20	966.81
4	GUIDE	121506864	6.82	4667	0.059	-0.045	0.048	0.084	231.000457	8.905840	320.81	-1226.15
5	GUIDE	121507480	8.80	4666	0.060	-0.071	0.071	0.112	230.407322	8.449858	454.59	1444.26
6	GUIDE	121508296	9.76	4535	0.157	0.049	0.109	0.210	230.773331	9.242986	1767.19	-1405.78
7	GUIDE	121508304	7.52	4666	-0.165	0.120	0.058	0.100	231.074833	9.087473	643.83	-1853.36

2.4 Star Slots

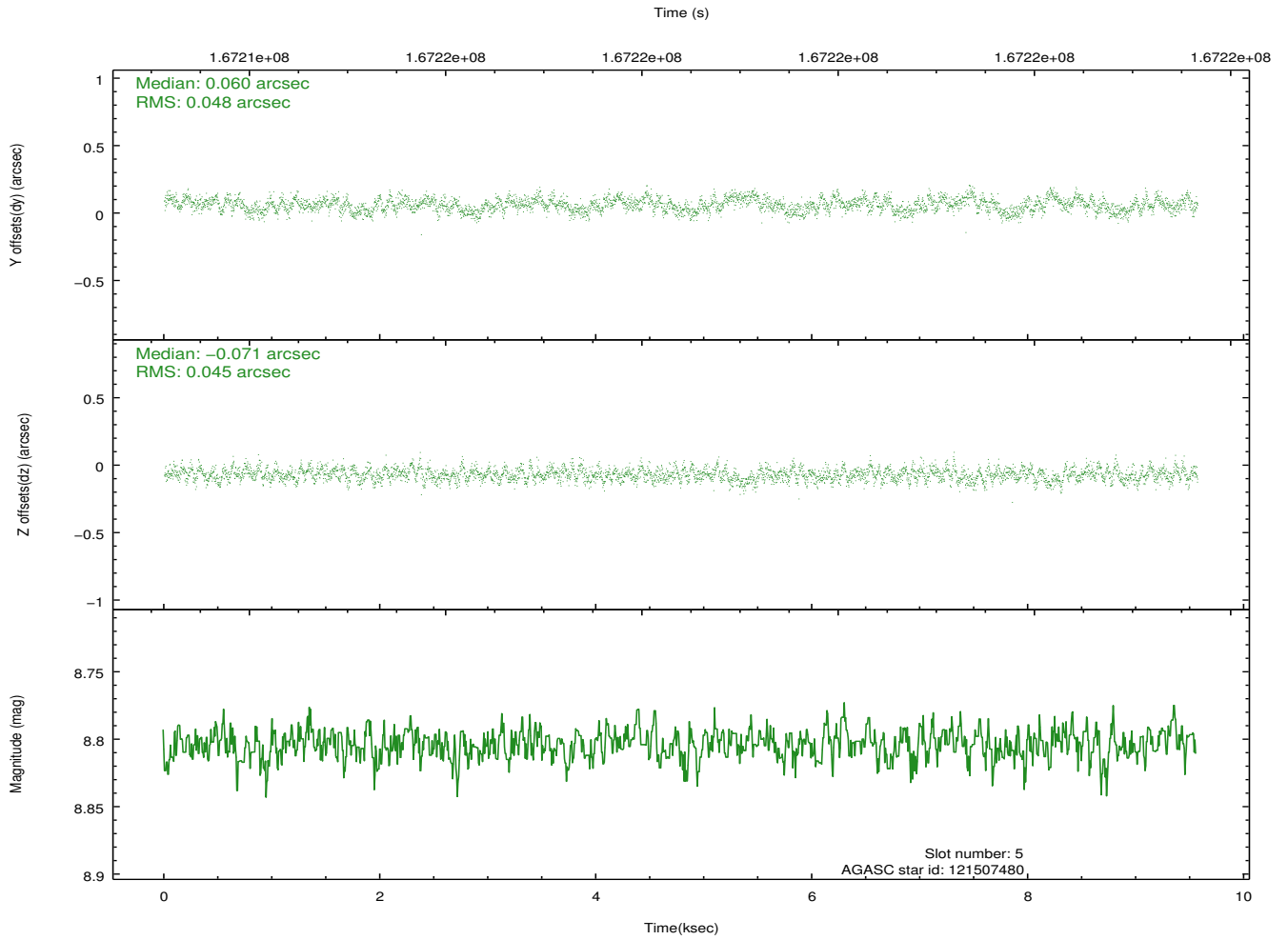
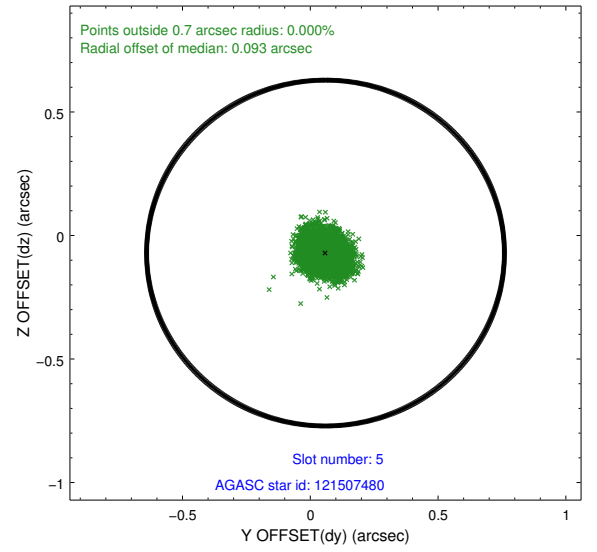
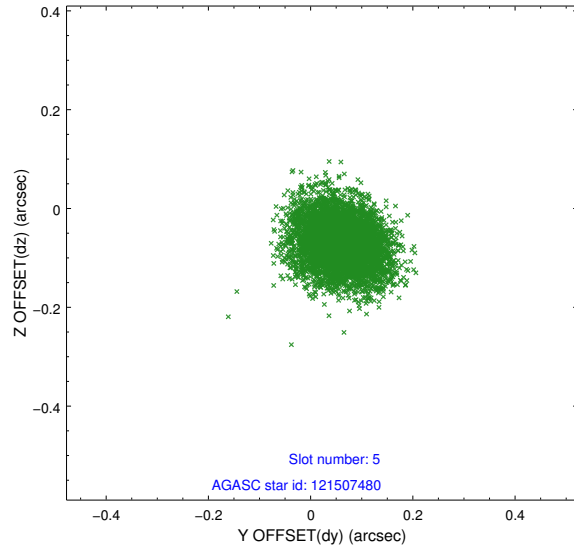
2.4.1 Slot 3



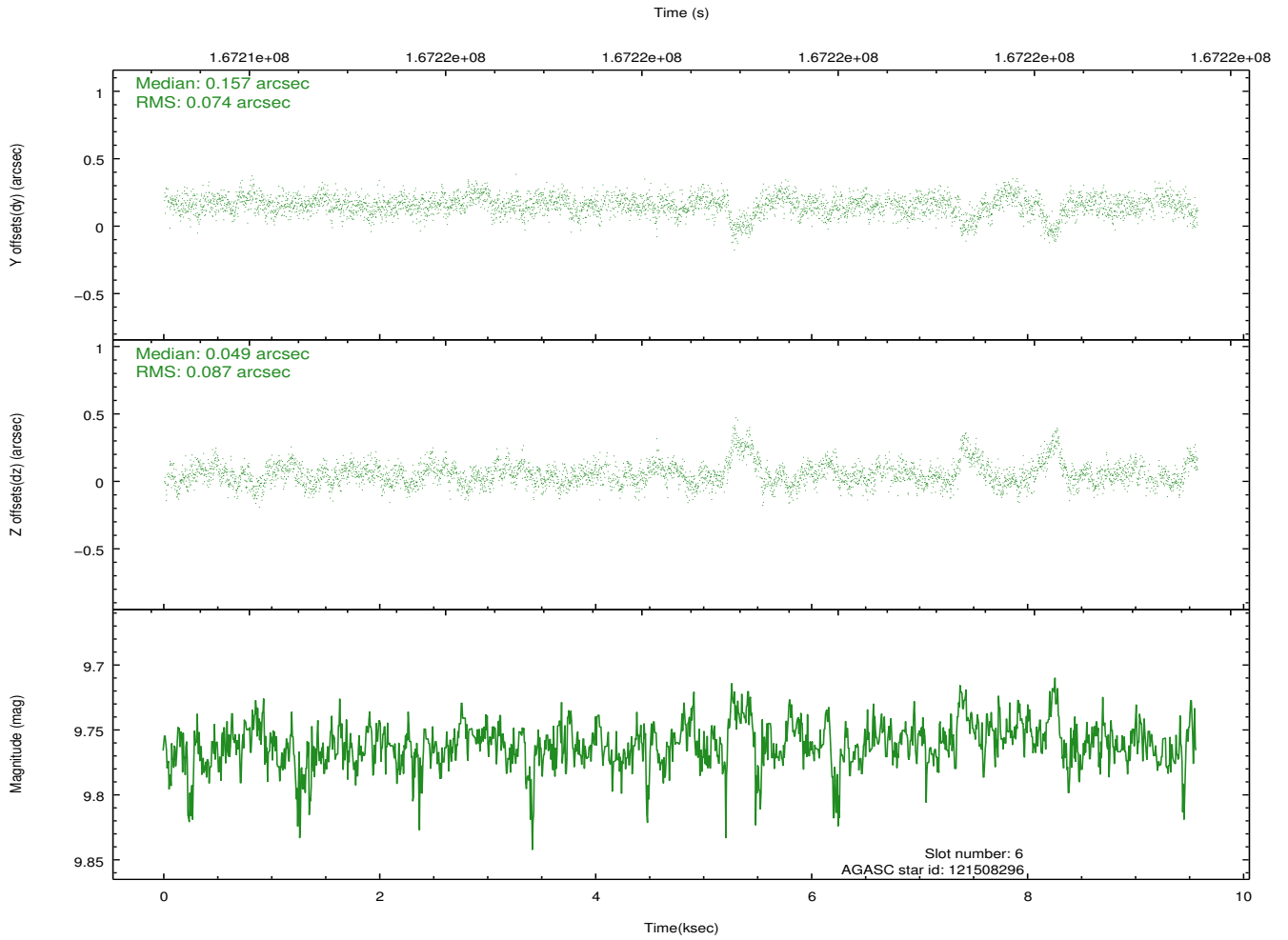
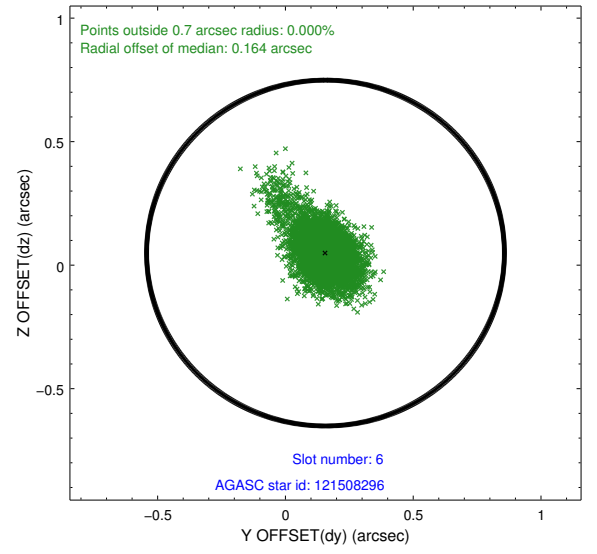
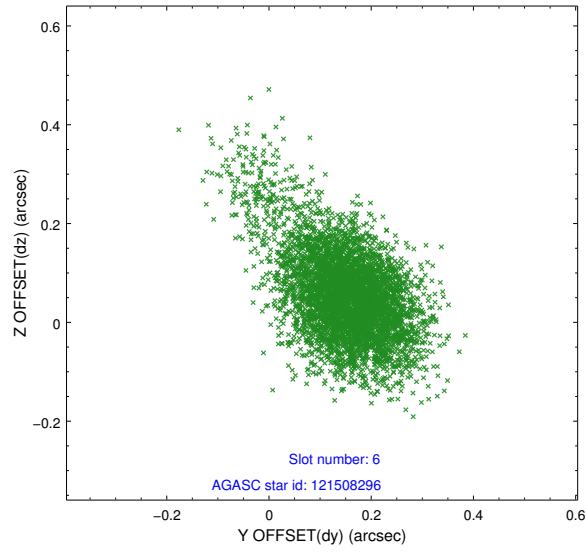
2.4.2 Slot 4



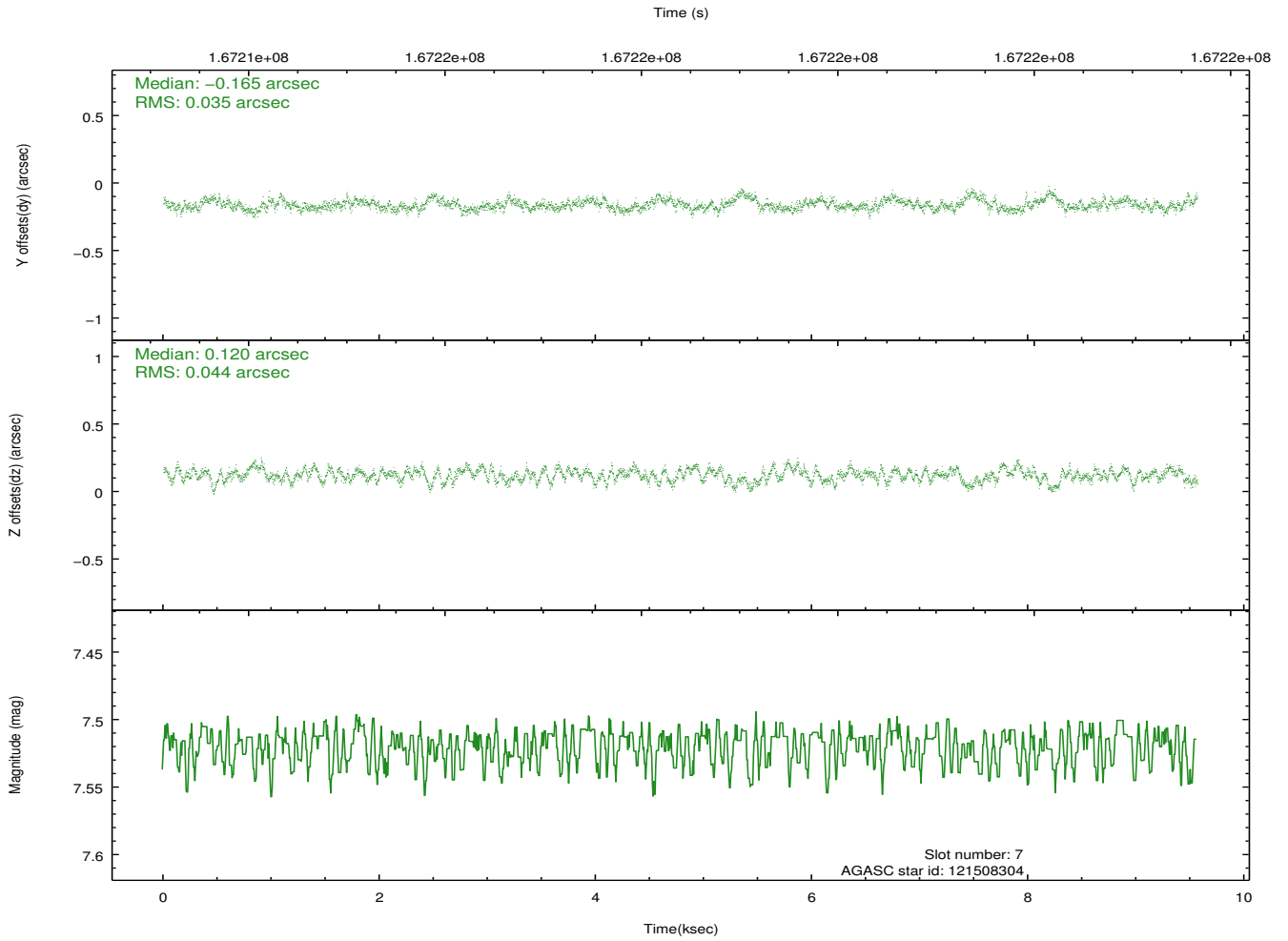
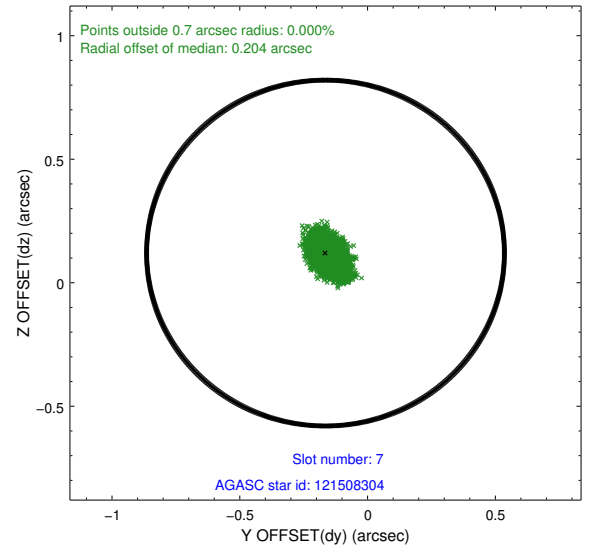
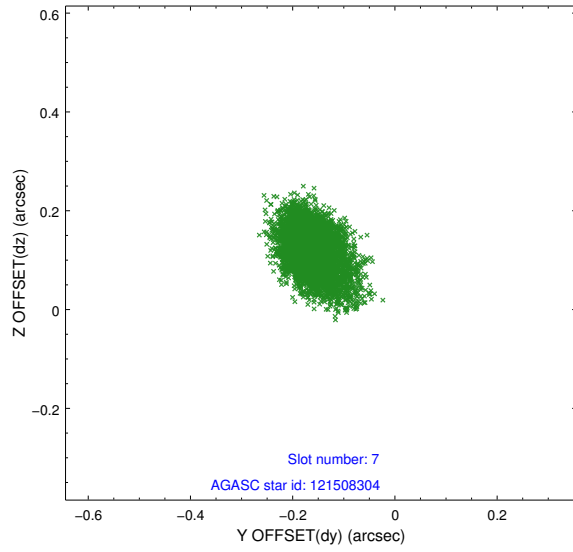
2.4.3 Slot 5



2.4.4 Slot 6

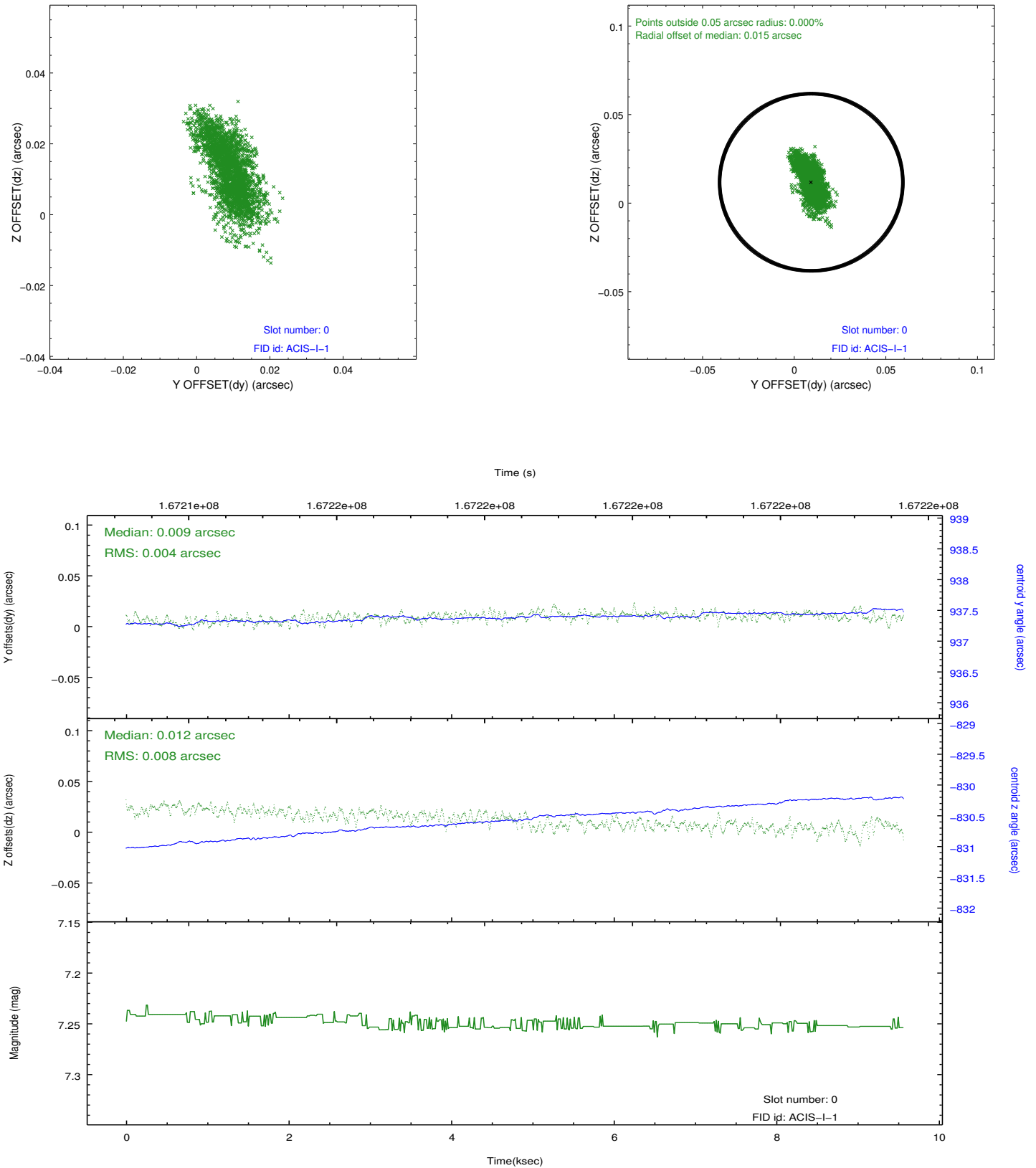


2.4.5 Slot 7

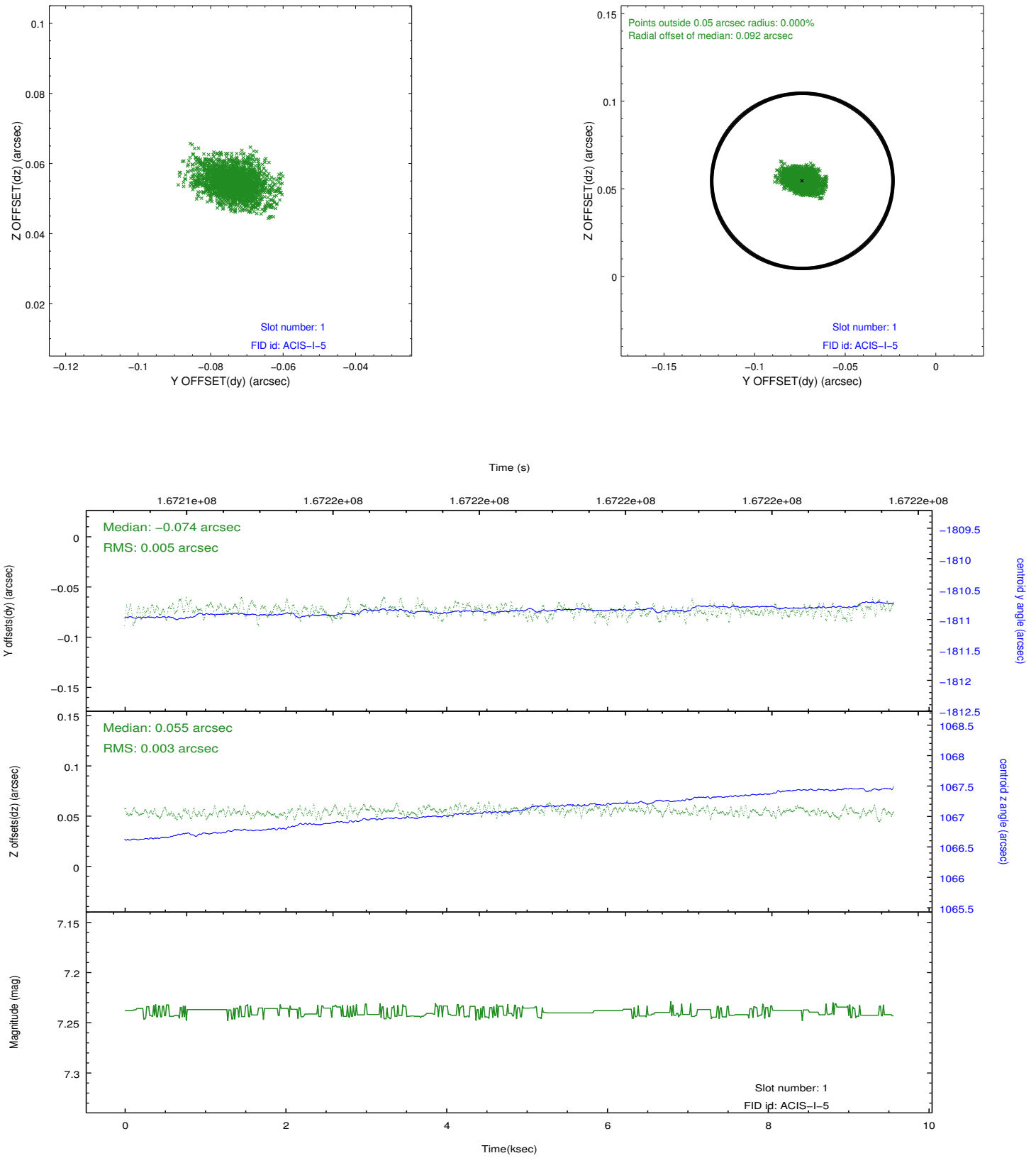


2.5 FID Slots

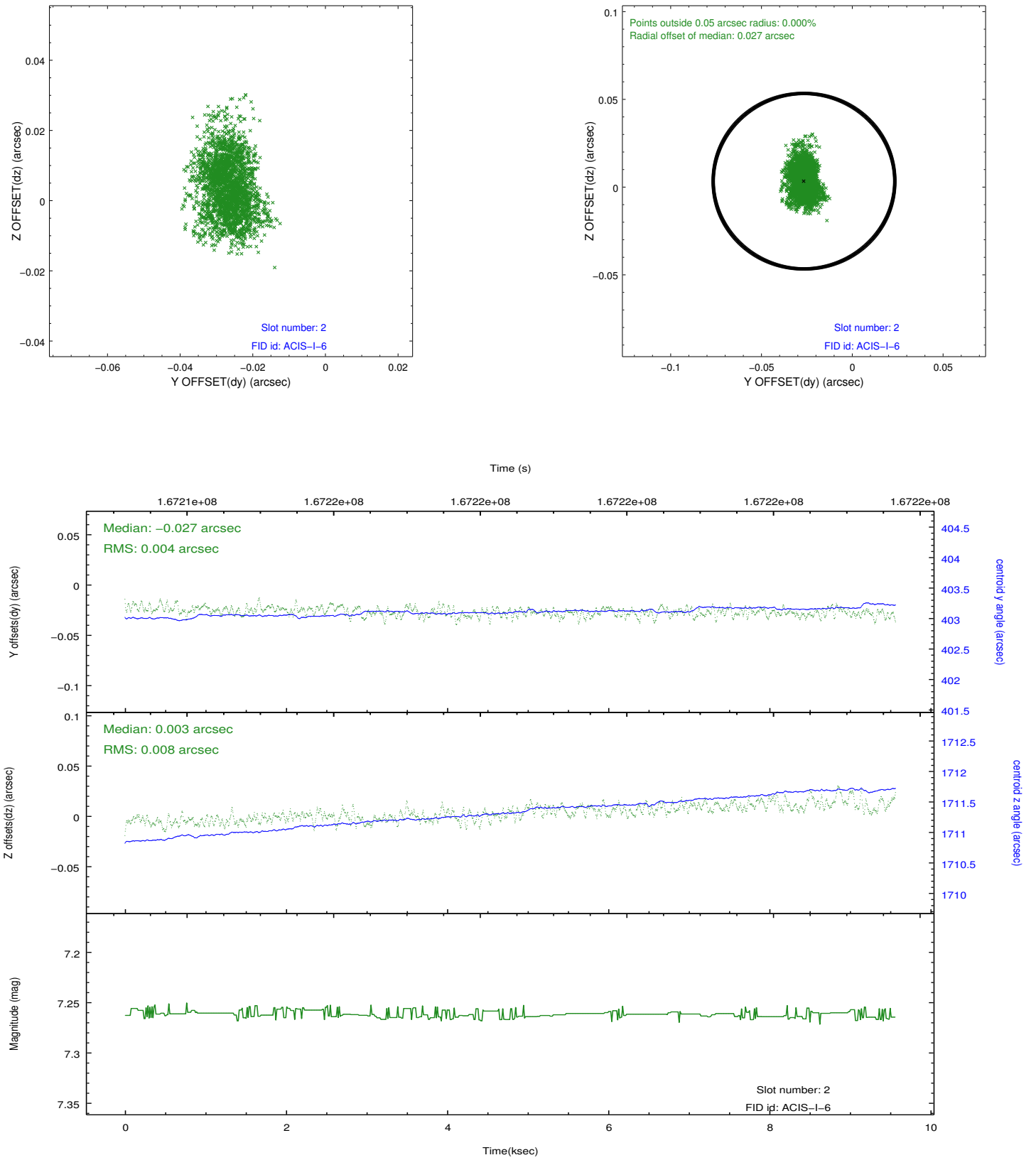
2.5.1 Slot 0



2.5.2 Slot 1



2.5.3 Slot 2



A Summary

A.1 Status

V&V Scientist	Jen Lauer
V&V Date (YYYY-MM-DD)	2012.11.14
V&V Edition	1
V&V Disposition and Status	OK
V&V Charge Time	8.893

A.2 Comments