

# V&V Reference Report

## L2 ASCDS Version : 8.4.5

Observation 4184 - L2 Version 3  
Chandra X-Ray Center

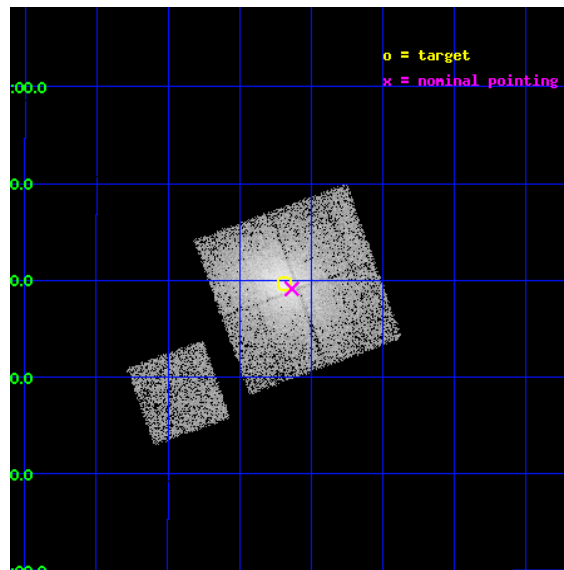
L2 Processing Date : Nov 1 2012

## Contents

<b>1</b>	<b>Front</b>	<b>2</b>
<b>2</b>	<b>OBI</b>	<b>3</b>
2.1	OBI . . . . .	3
2.1.1	Images . . . . .	3
2.1.2	Bias . . . . .	3
2.1.3	Parameters . . . . .	4
2.1.4	Events . . . . .	4
2.2	Compared Parameters . . . . .	5
2.3	Aspect . . . . .	6
2.4	Star Slots . . . . .	9
2.4.1	Slot 3 . . . . .	9
2.4.2	Slot 4 . . . . .	10
2.4.3	Slot 5 . . . . .	11
2.4.4	Slot 6 . . . . .	12
2.4.5	Slot 7 . . . . .	13
2.5	FID Slots . . . . .	14
2.5.1	Slot 0 . . . . .	14
2.5.2	Slot 1 . . . . .	15
2.5.3	Slot 2 . . . . .	16
<b>A</b>	<b>Summary</b>	<b>17</b>
A.1	Status . . . . .	17
A.2	Comments . . . . .	17

# 1 Front

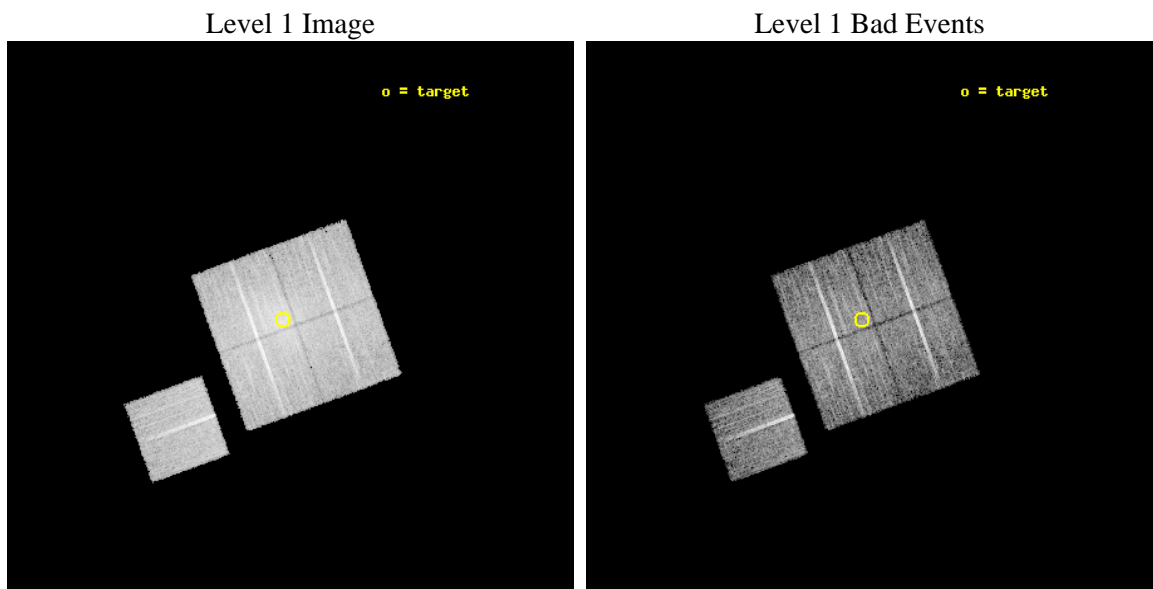
seq_num	800340	Sequence number
obs_id	4184	Observation id
title	THE HIFLUGCS CLUSTER SURVEY: A CORNERSTONE FOR COSMOLOGY	Proposal
observer	Dr. CRAIG SARAZIN	Principal investigator
object	ZWCL1215	Source name
dtcycle	0	&#160
cycle	P	events from which exps? Prim/Second/Both
ra_targ	184.422083	Observer's specified target RA [deg]
dec_targ	3.660444	Observer's specified target Dec [deg]
ra_nom	184.40823089146	Nominal RA [deg]
dec_nom	3.6521116991137	Nominal Dec [deg]
roll_nom	250.0099946546	Nominal Roll [deg]
revision	3	Processing version of data
ontime	12220.199976474	Sum of GTIs [s]
livetime	12060.534067401	Livetime [s]
ontime0	12220.199976474	Sum of GTIs [s]
ontime1	12220.199976474	Sum of GTIs [s]
ontime2	12217.059006244	Sum of GTIs [s]
ontime3	12220.199976474	Sum of GTIs [s]
ontime6	12217.058976322	Sum of GTIs [s]
l2events	61951	Number of level 2 events



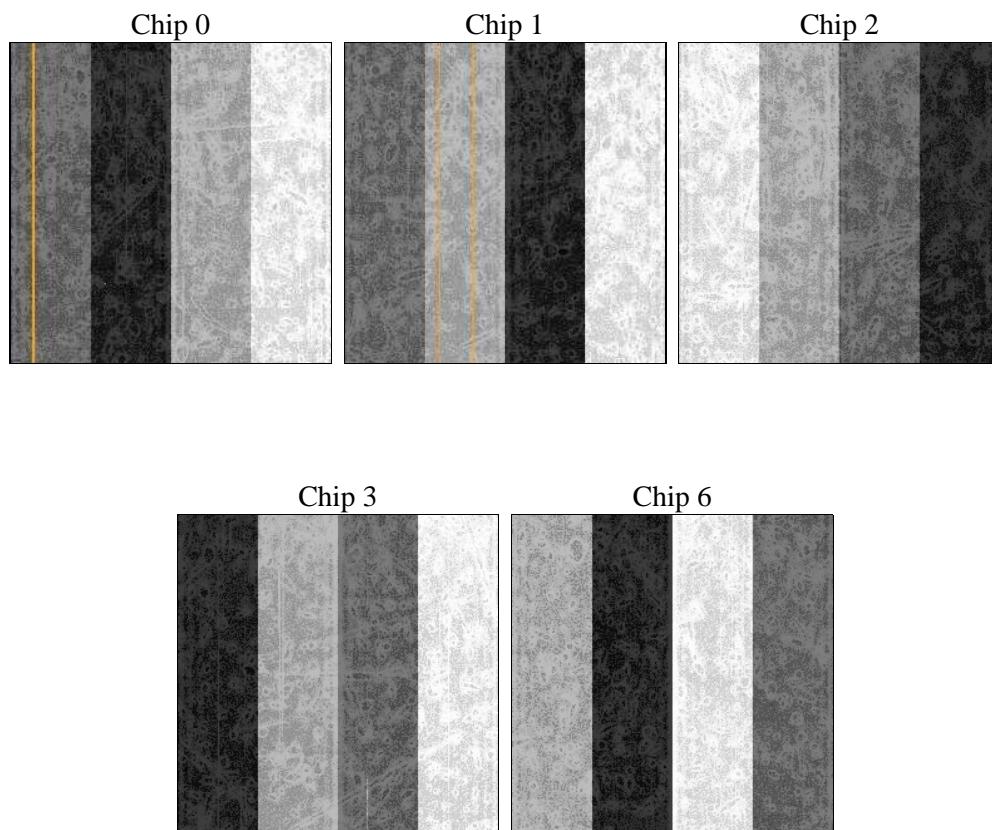
## 2 OBI

### 2.1 OBI

#### 2.1.1 Images



#### 2.1.2 Bias



### 2.1.3 Parameters

obi_num	0	Obi number	sched_exp_time	12091.000000	[s] Scheduled observation exposure time
ascdsver	8.4.5	Processing system revision	ontime	12220.199976474	Sum of GTIs [s]
caldsver	4.5.2	&#160	ontime0	12220.199976474	Sum of GTIs [s]
date	2012-11-01T10:36:40	Date and time of file creation	ontime1	12220.199976474	Sum of GTIs [s]
revision	3	Processing version of data	ontime2	12217.059006244	Sum of GTIs [s]
			ontime3	12220.199976474	Sum of GTIs [s]
			ontime6	12217.058976322	Sum of GTIs [s]
			l1events	367328	Number of level 1 events

### 2.1.4 Events

	ccd 0	ccd 1	ccd 2	ccd 3	ccd 6
level 1 events	66390	68989	77394	86996	67559
rejected events	54480	55595	63577	63535	60836
rejected %	82%	80%	82%	73%	90%

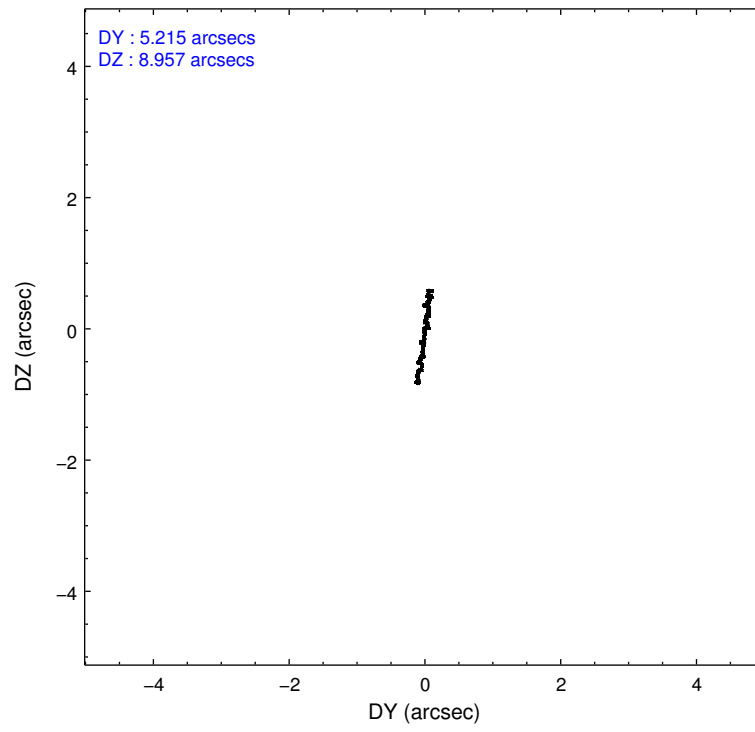
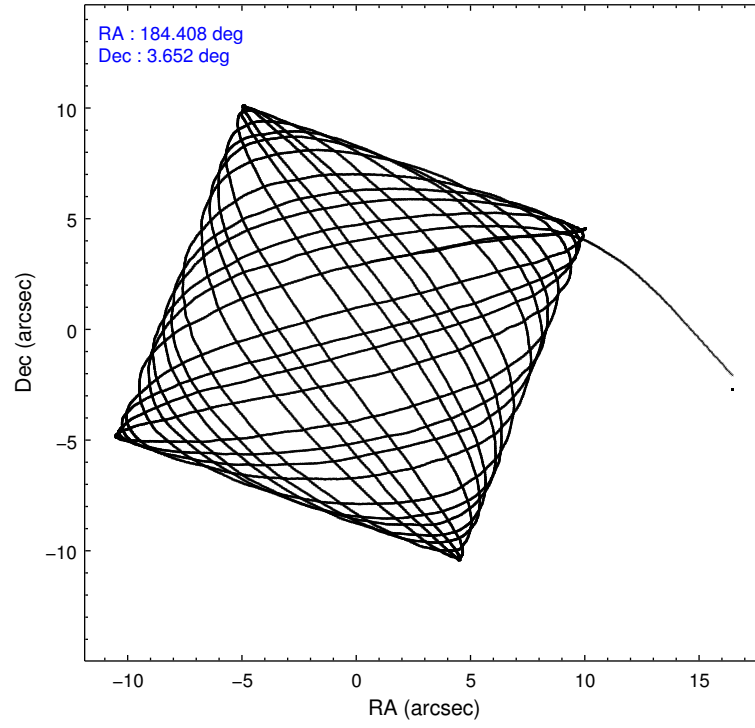
	ccd 0	ccd 1	ccd 2	ccd 3	ccd 6
grade 0 events	6975	8067	8617	16887	2591
	10%	11%	11%	19%	3%
grade 1 events	41	56	56	88	24
	0%	0%	0%	0%	0%
grade 2 events	2077	2212	2161	2989	1371
	3%	3%	2%	3%	2%
grade 3 events	952	1019	1005	1202	774
	1%	1%	1%	1%	1%
grade 4 events	840	977	973	1282	821
	1%	1%	1%	1%	1%
grade 5 events	2326	2485	2107	2573	2580
	3%	3%	2%	2%	3%
grade 6 events	1396	1586	1387	1561	1424
	2%	2%	1%	1%	2%
grade 7 events	51783	52587	61088	60414	57974
	77%	76%	78%	69%	85%

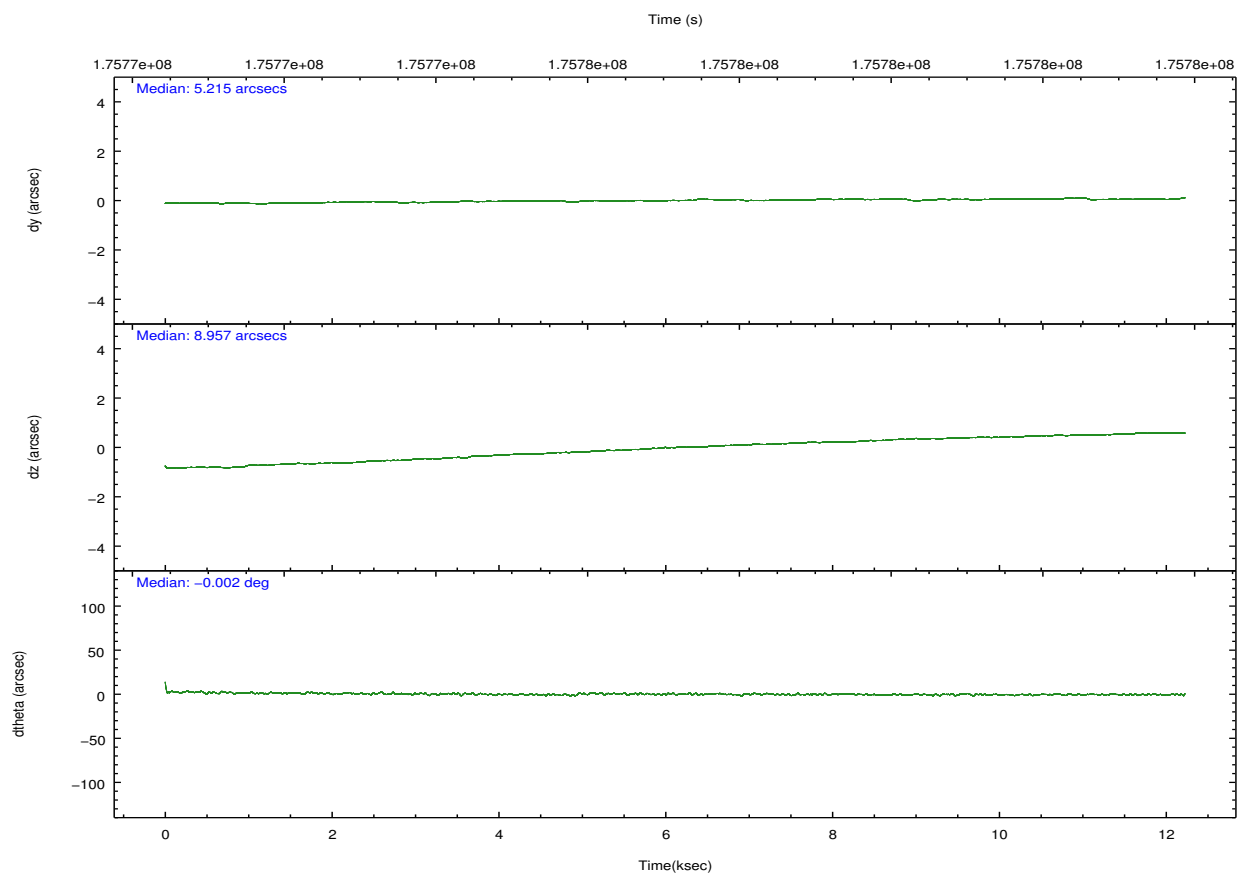
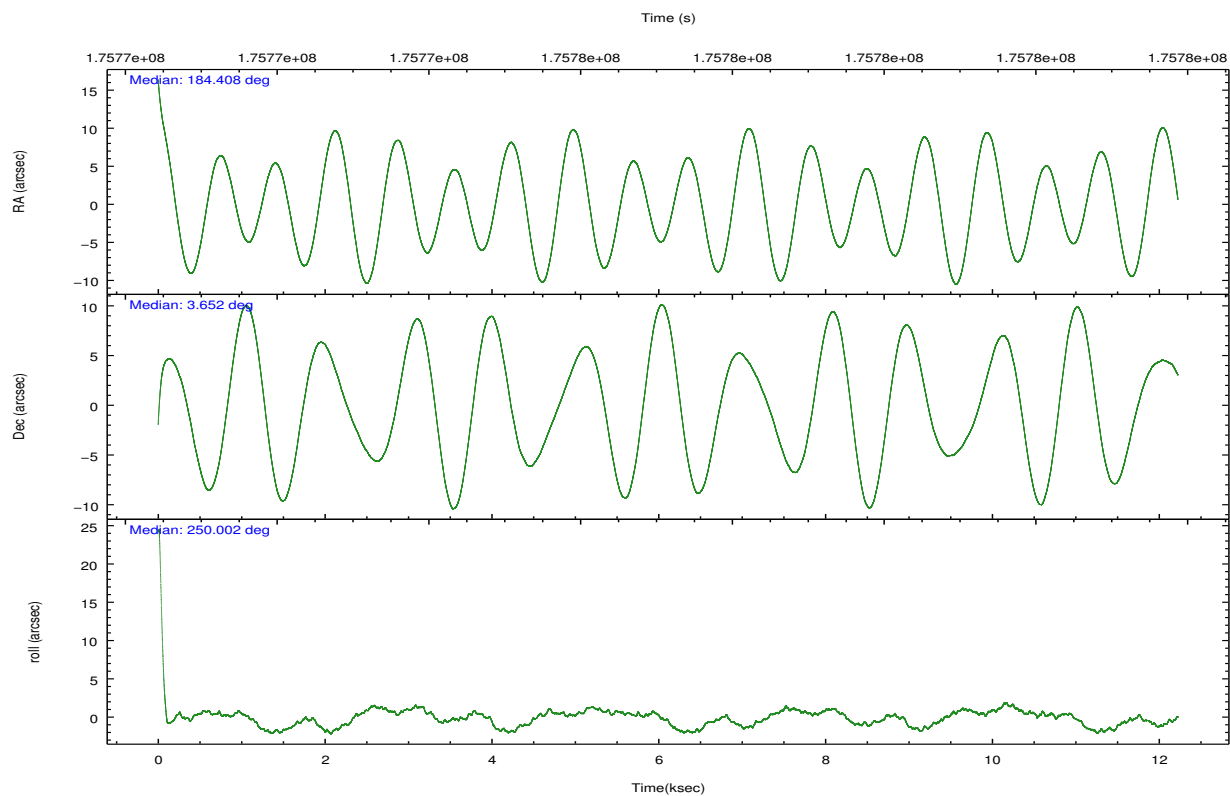


## 2.2 Compared Parameters

Parameter	Planned	Actual	Parameter	Planned	Actual
Instrument	ACIS	ACIS	Obspar format version number	7	7
Detector	ACIS-01236	ACIS-01236	Obspar file type	PREDICTED	ACTUAL
Grating	NONE	NONE	Obspar update status	NONE	UPDATED
Data mode	VFAINT	VFAINT	Number of optional ACIS chips dropped	0	0
Observation mode	POINTING	POINTING	On-chip summing requested	N	N
[deg] Pointing RA	184.403322	184.4082308914569	Subarray requested	NONE	NONE
[deg] Pointing Dec	3.679053	3.652111699113725	Alternating exposures requested	N	N
[deg] Pointing Roll	249.801601	250.0099946546048	[s] Primary exposure time	0.000000	3.1
[mm] SIM focus pos	-0.782348	-0.7809083437167272			
[mm] SIM defocus	0	0.001439871863259334			
[mm] SIM translation stage pos	-233.592463	-233.5874344608287			
[mm] SIM translation stage offset	0	-0.005018542100998502			
[s] Observation start time (MET)	175771173.184000	175769998.02764			
Observation start date	2003-07-28T09:18:29	2003-07-28T08:59:58			
[s] Observation end time (MET)	175783264.184000	175783880.62823			
Observation end date	2003-07-28T12:40:00	2003-07-28T12:51:20			
Read mode	TIMED	TIMED			

## 2.3 Aspect



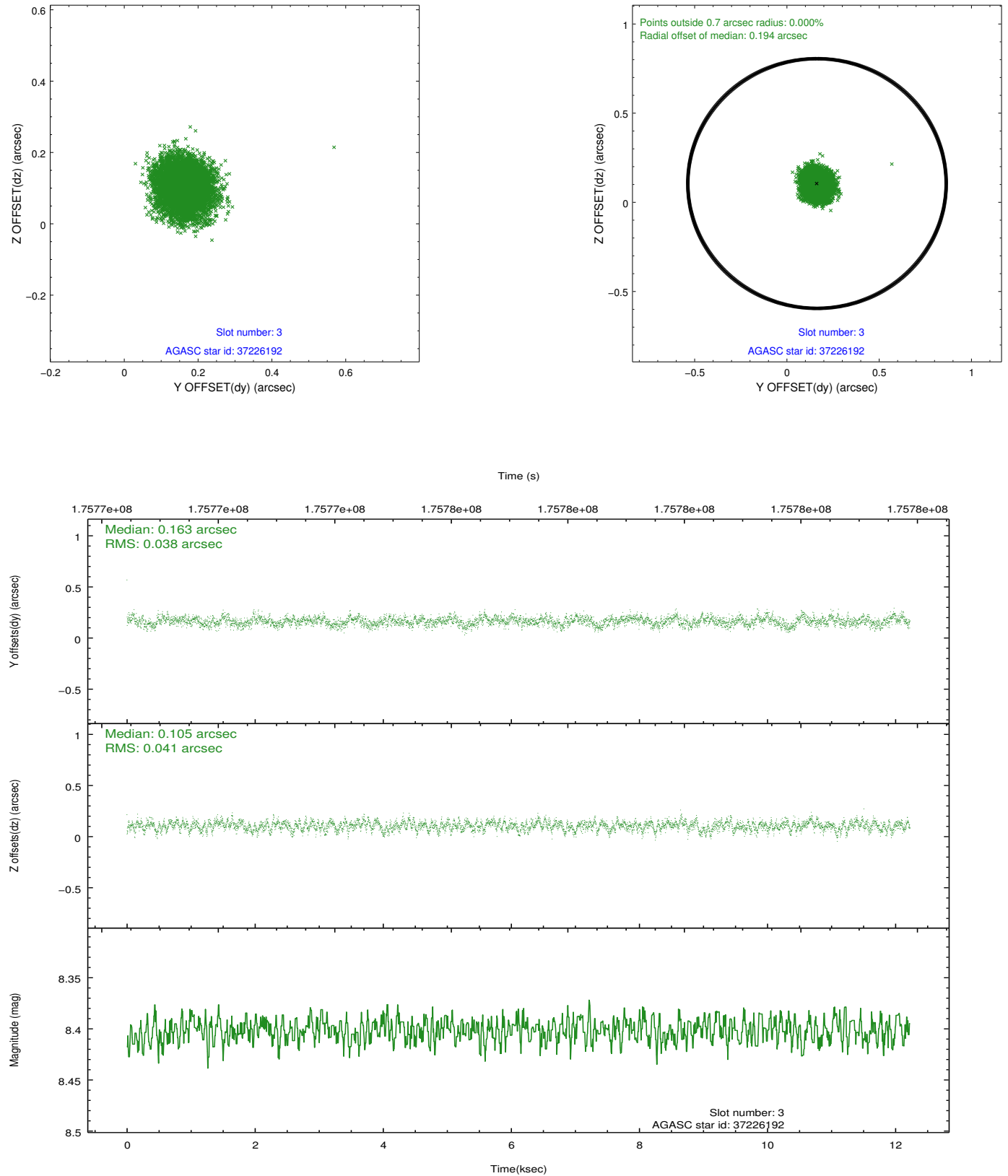


### Slot Statistics

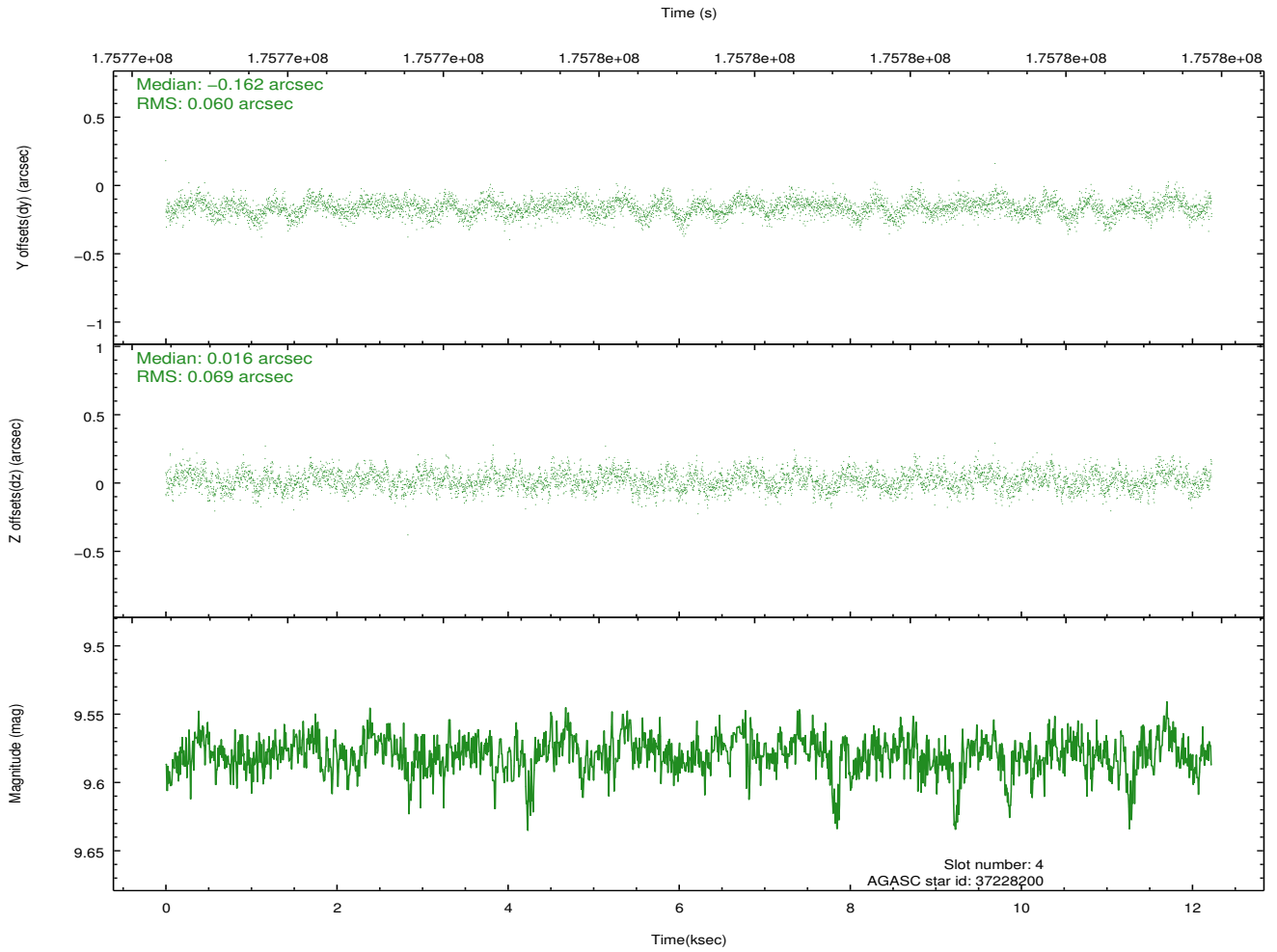
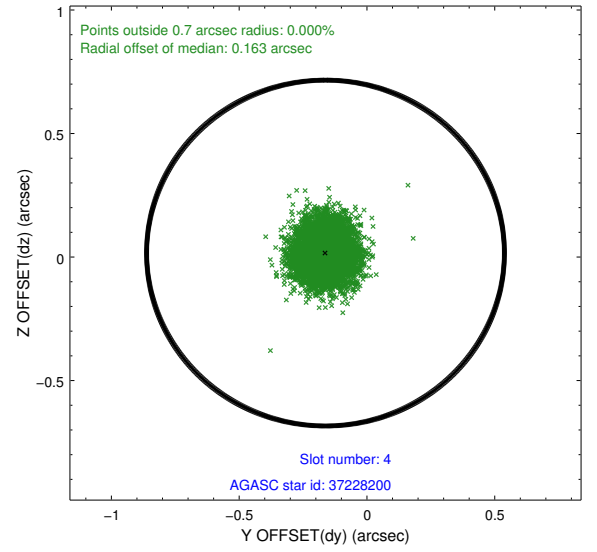
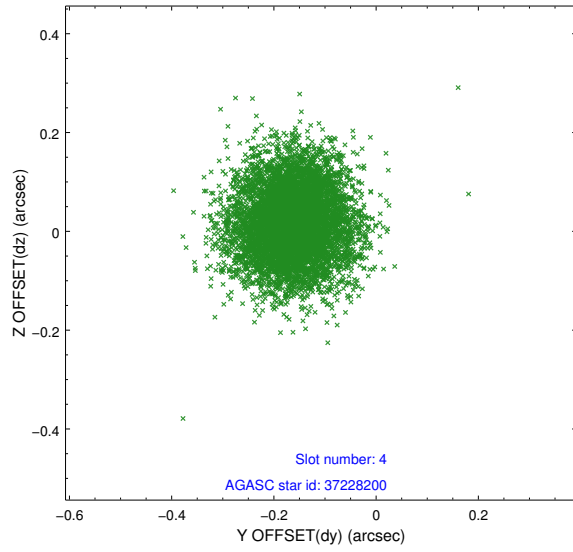
slot	status	id	mag	n_pts	med_dy	med_dz	dr1	dr2	ra	dec	mean_y	mean_z
0	FID	ACIS-I-2	7.14	2982	-0.058	-0.065	0.022	0.033	0.000000	0.000000	-759.71	-838.76
1	FID	ACIS-I-4	7.18	2981	0.116	0.056	0.020	0.028	0.000000	0.000000	2154.35	1067.32
2	FID	ACIS-I-5	7.22	2982	-0.160	0.079	0.020	0.029	0.000000	0.000000	-1813.11	1065.67
3	GUIDE	37226192	8.40	5964	0.163	0.105	0.060	0.097	184.579641	3.101119	1734.19	1313.50
4	GUIDE	37228200	9.58	5957	-0.162	0.016	0.098	0.155	183.968229	3.755904	280.49	-1562.31
5	GUIDE	37229592	8.35	5965	-0.095	-0.138	0.056	0.089	184.681147	3.867747	-981.89	701.32
6	GUIDE	37229720	9.82	5957	0.103	0.089	0.089	0.147	184.151794	3.472629	1009.95	-591.45
7	GUIDE	37230976	8.20	5964	-0.005	-0.072	0.053	0.085	184.029921	3.559958	866.30	-1111.57

## 2.4 Star Slots

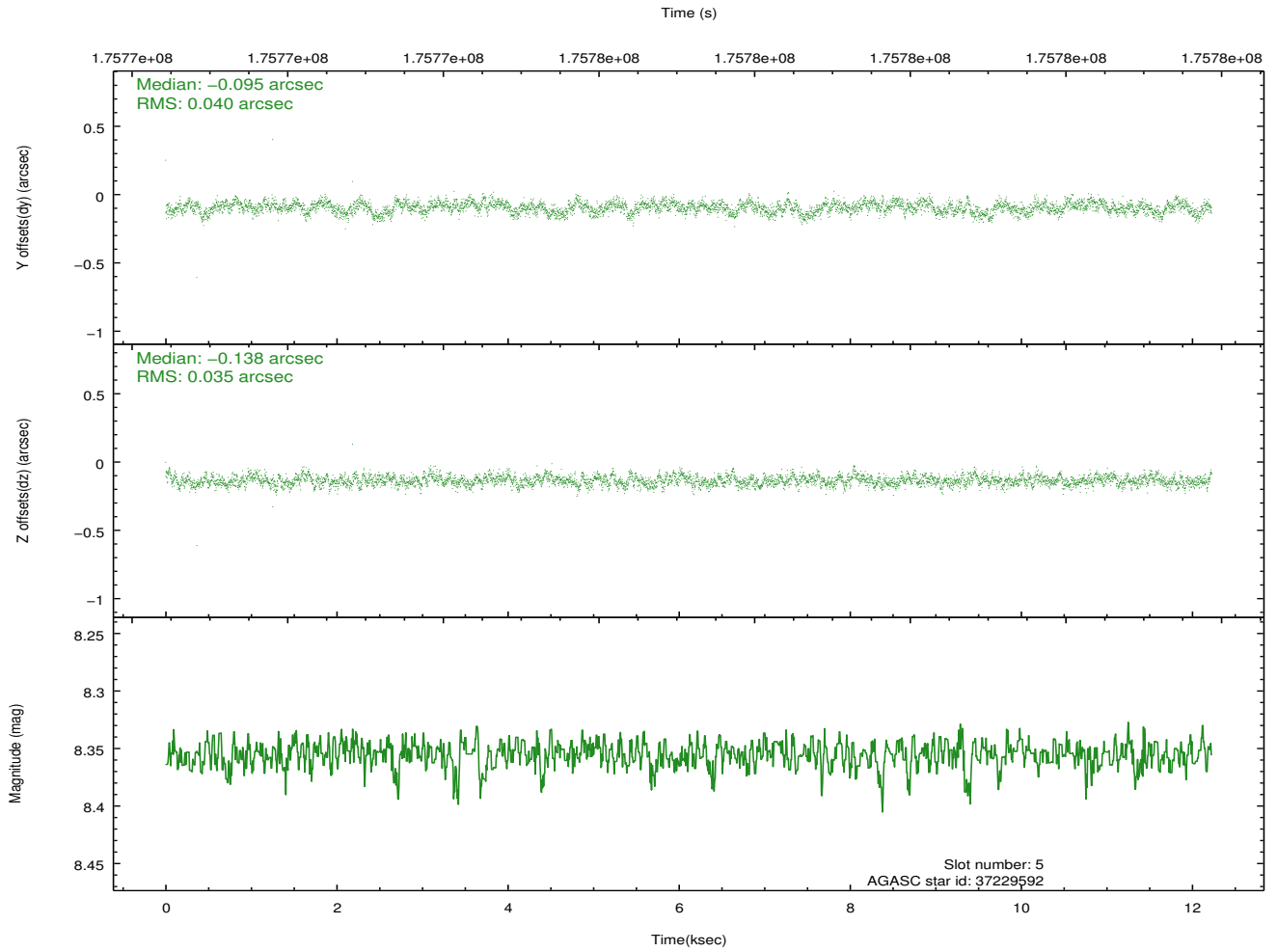
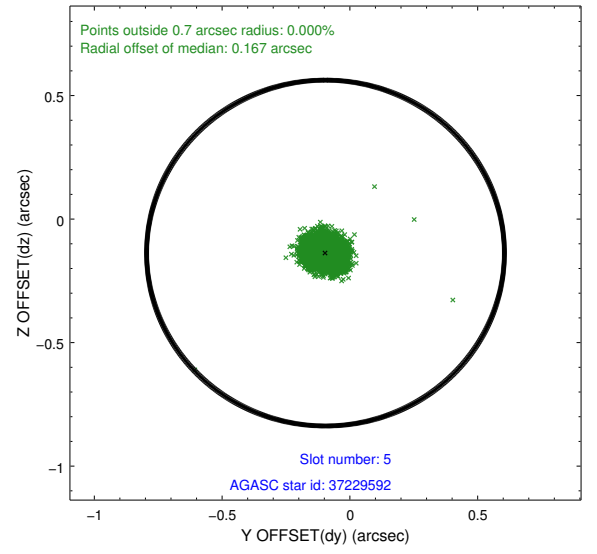
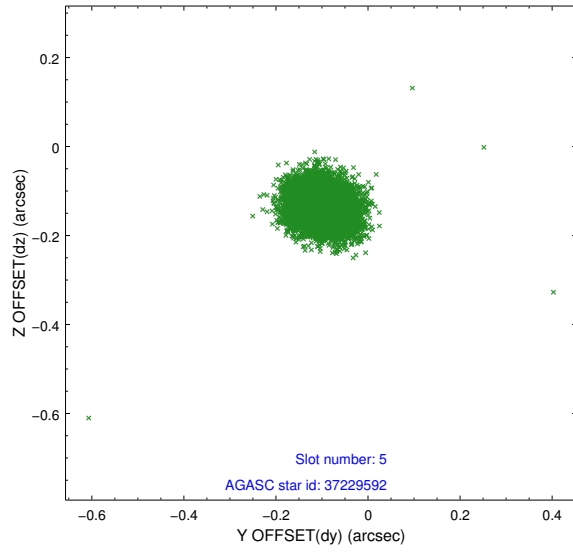
### 2.4.1 Slot 3



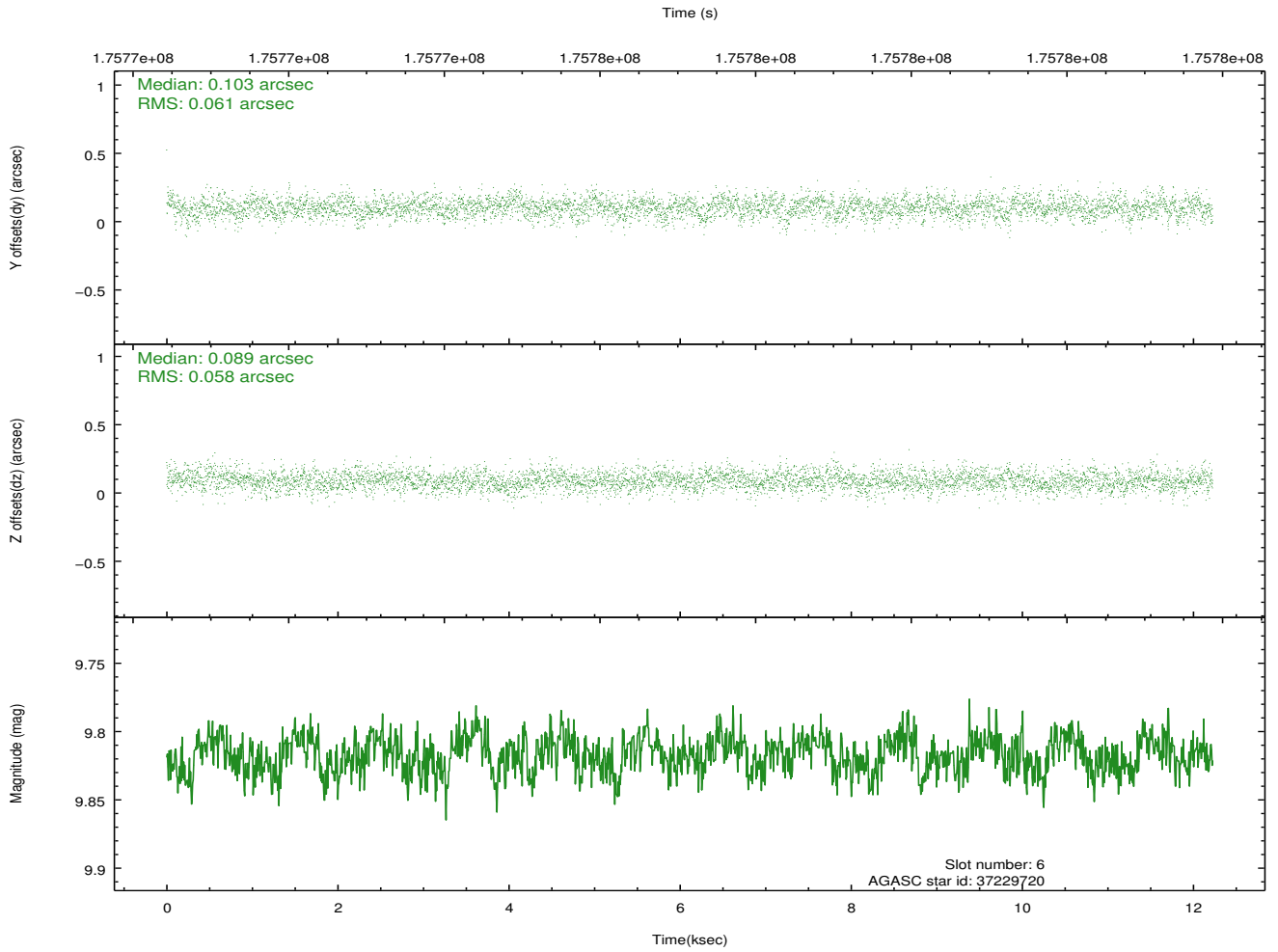
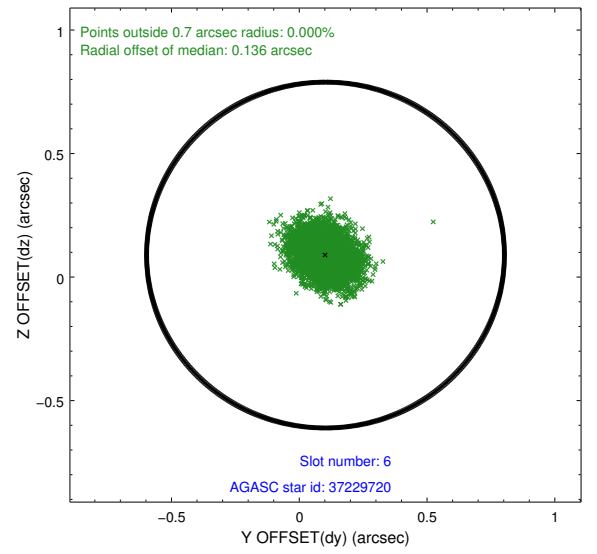
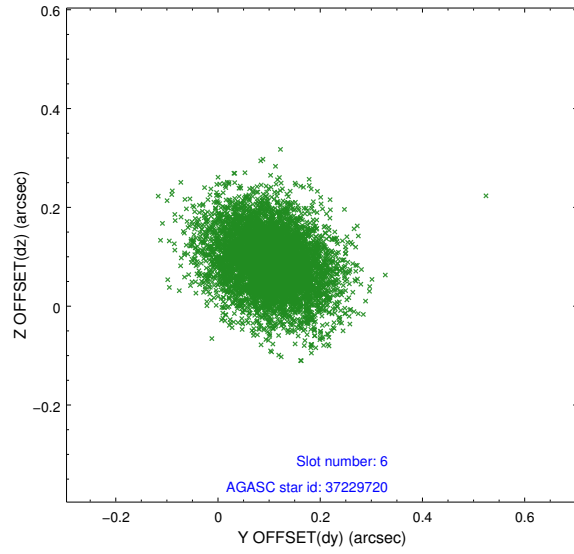
## 2.4.2 Slot 4



### 2.4.3 Slot 5

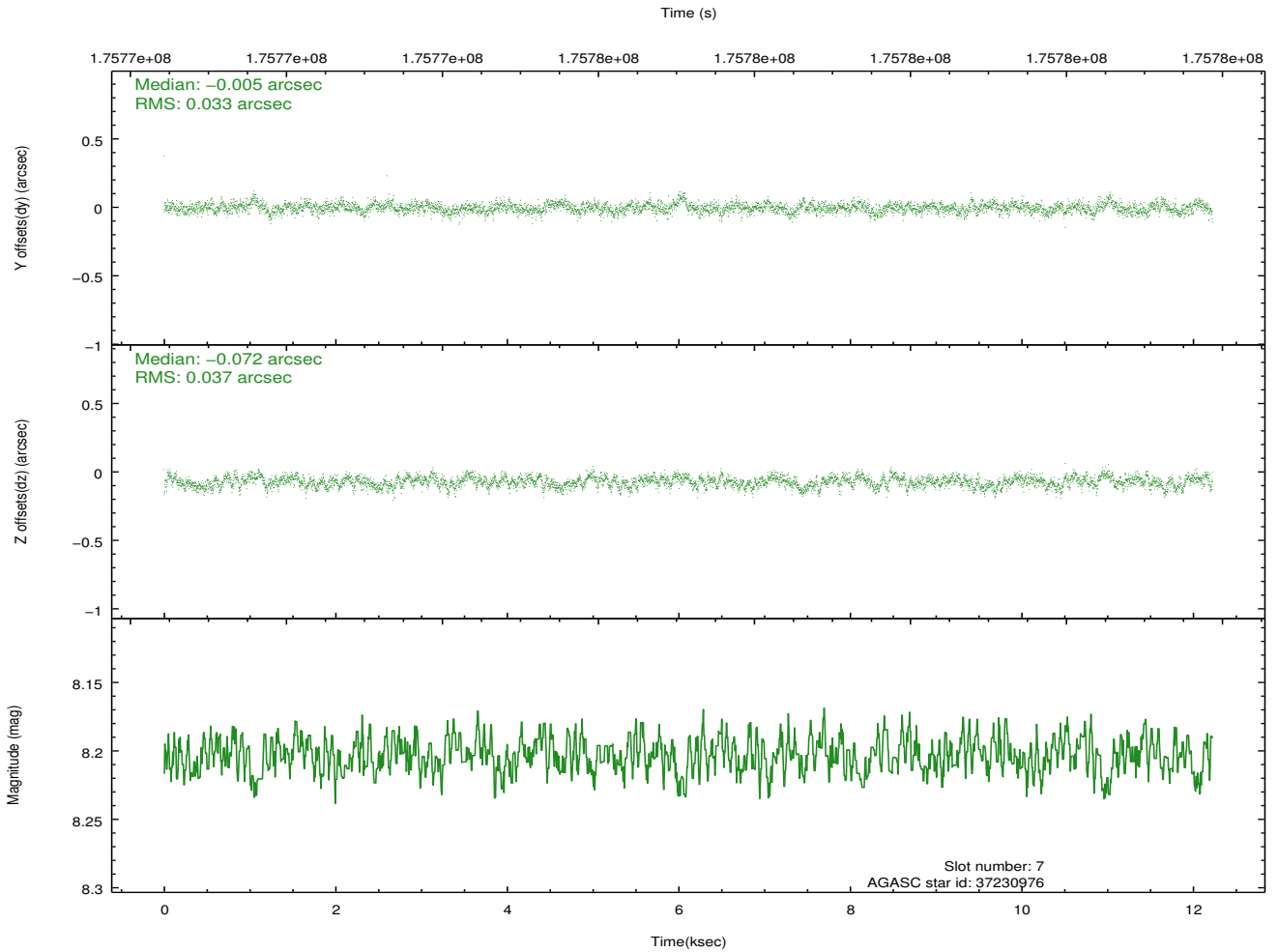
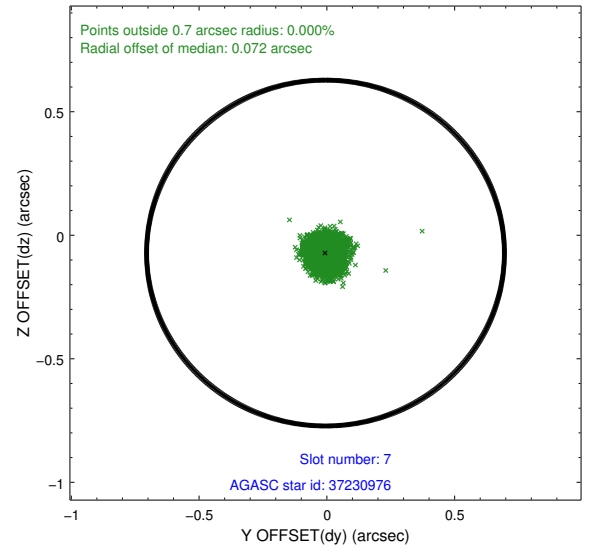
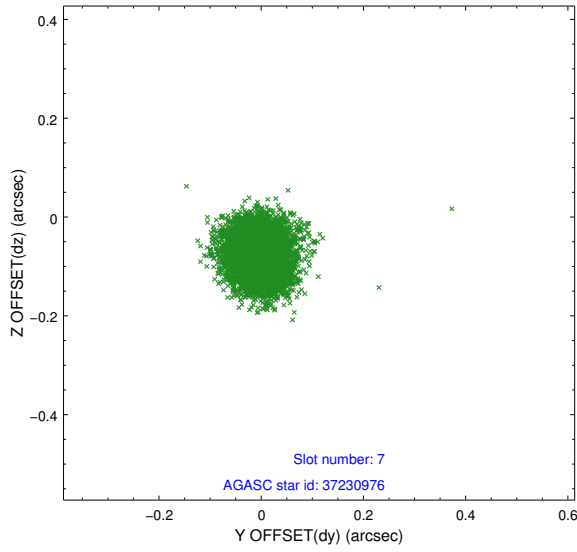


## 2.4.4 Slot 6



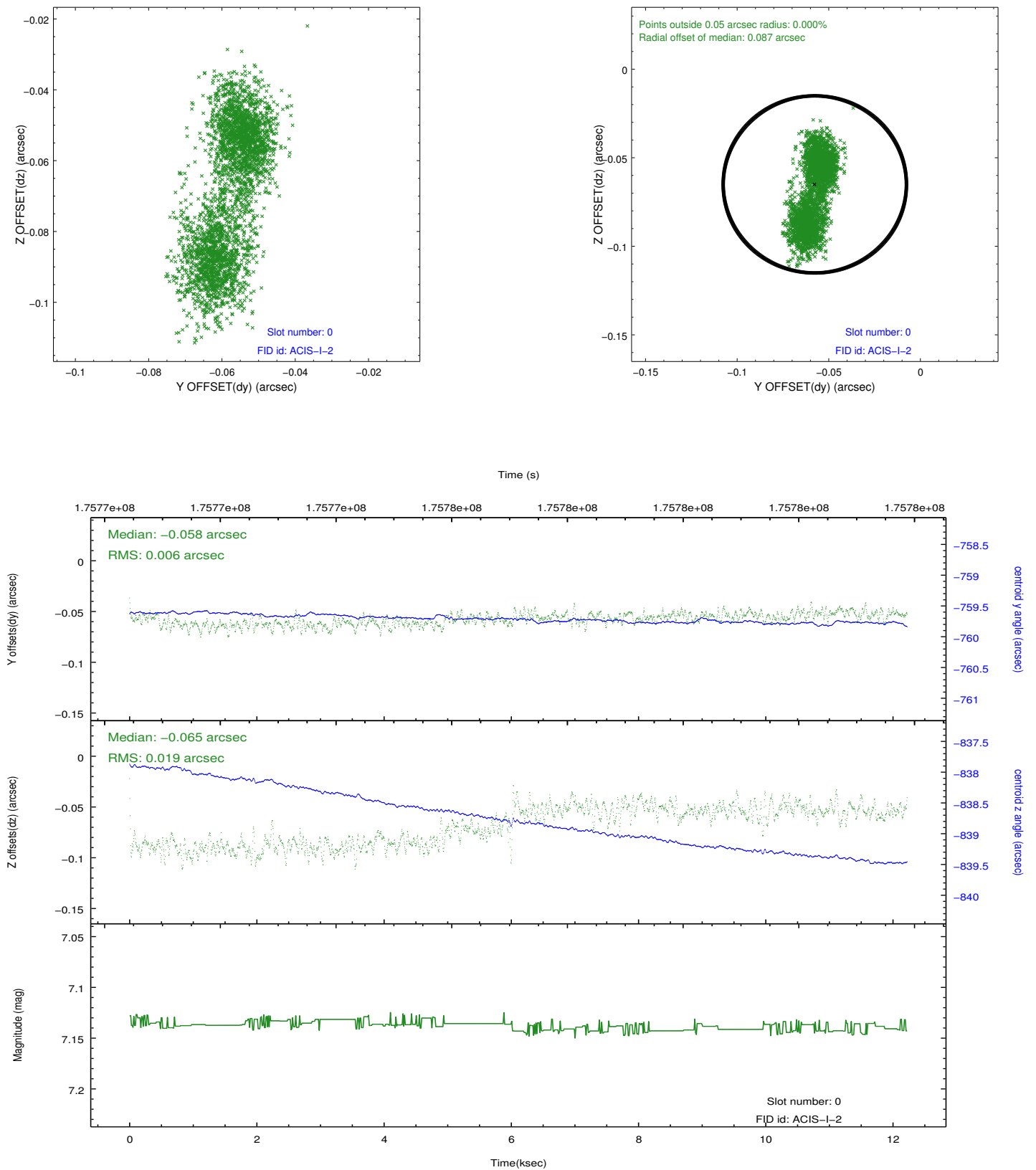


## 2.4.5 Slot 7

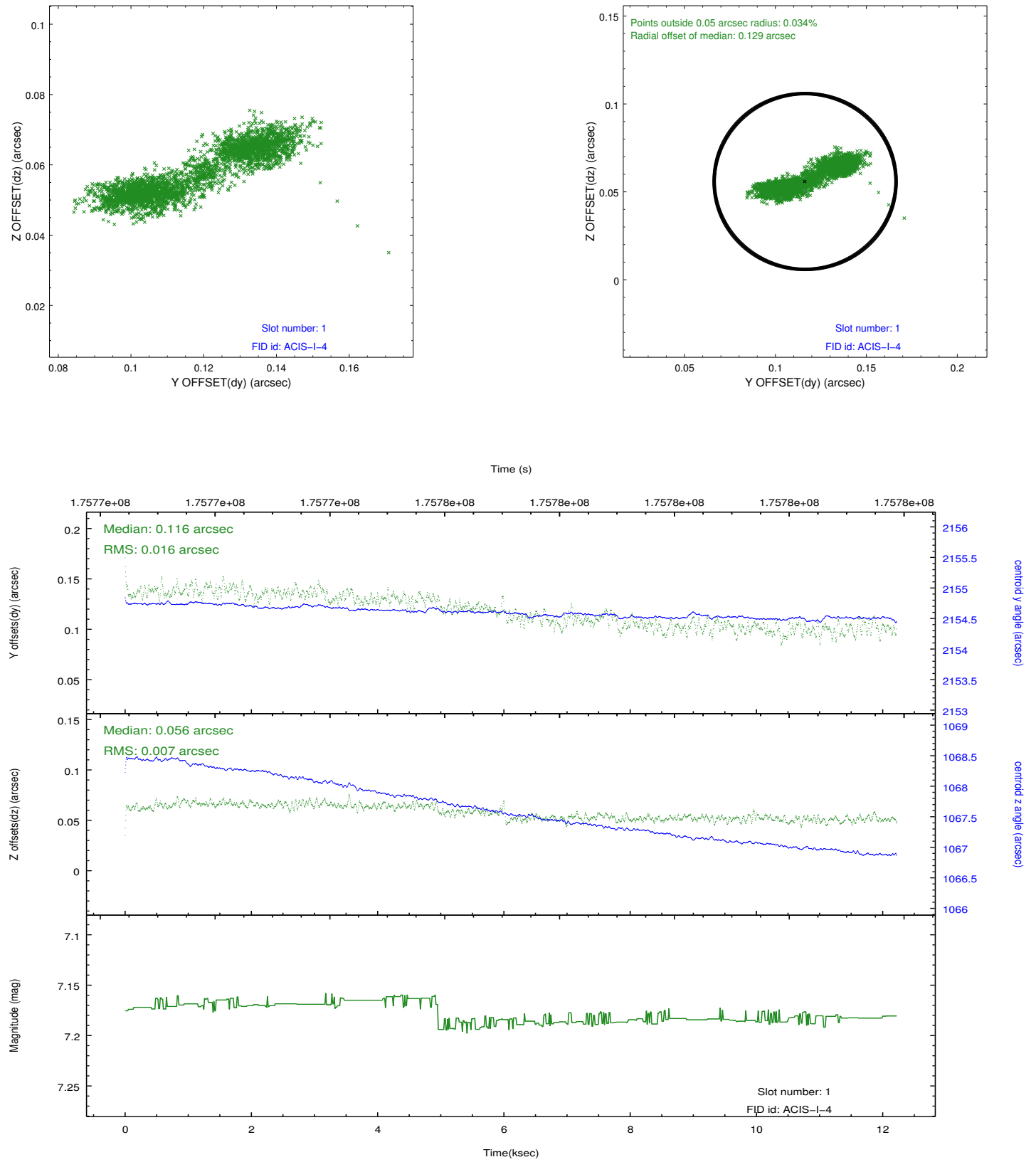


## 2.5 FID Slots

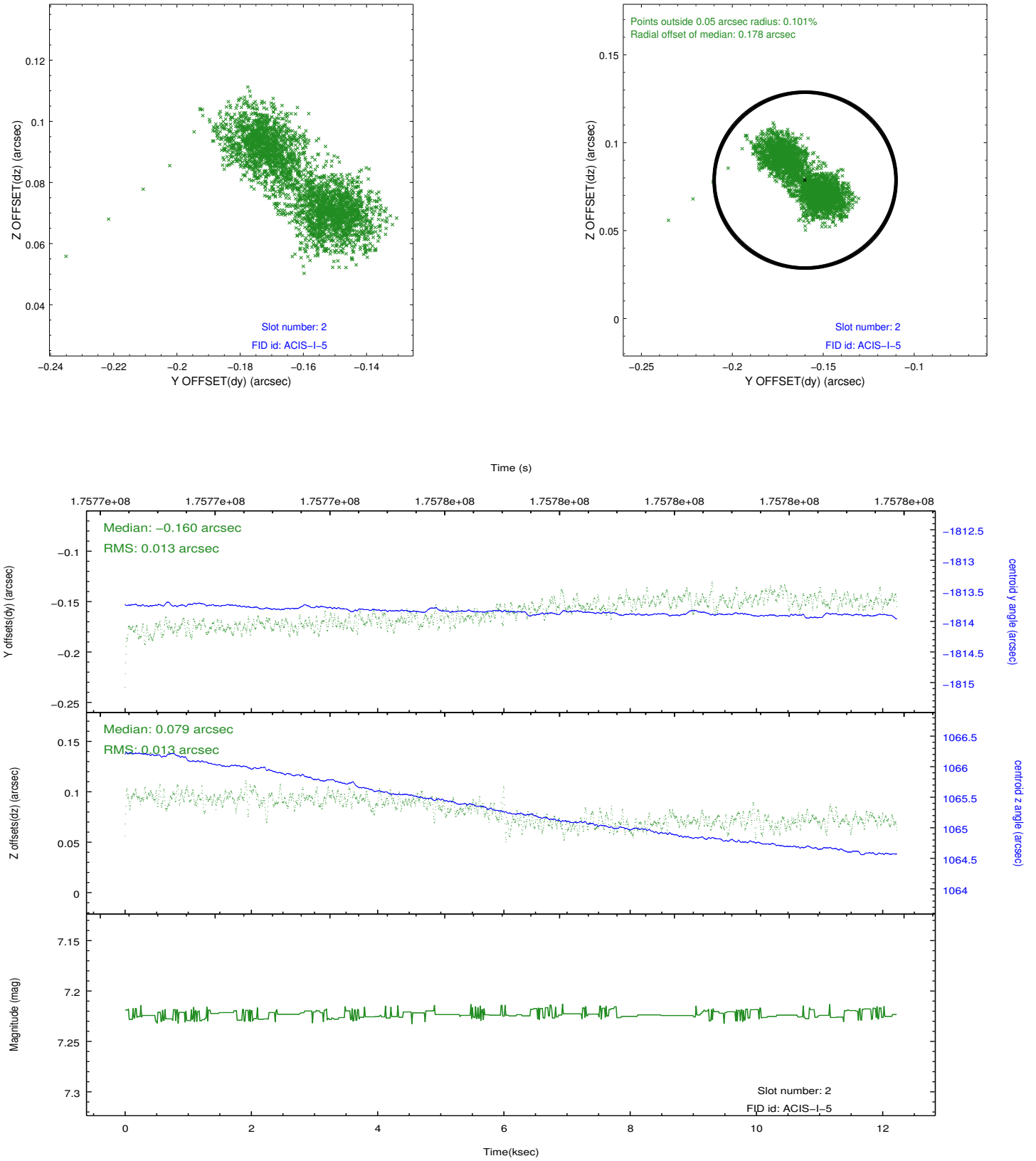
### 2.5.1 Slot 0



## 2.5.2 Slot 1



### 2.5.3 Slot 2



## A Summary

### A.1 Status

V&V Scientist	Beth Sundheim
V&V Date (YYYY-MM-DD)	2012.11.16
V&V Edition	1
V&V Disposition and Status	OK
V&V Charge Time	12.22

### A.2 Comments