

V&V Reference Report

L2 ASCDS Version : 8.4.5

Observation 4183 - L2 Version 3
Chandra X-Ray Center

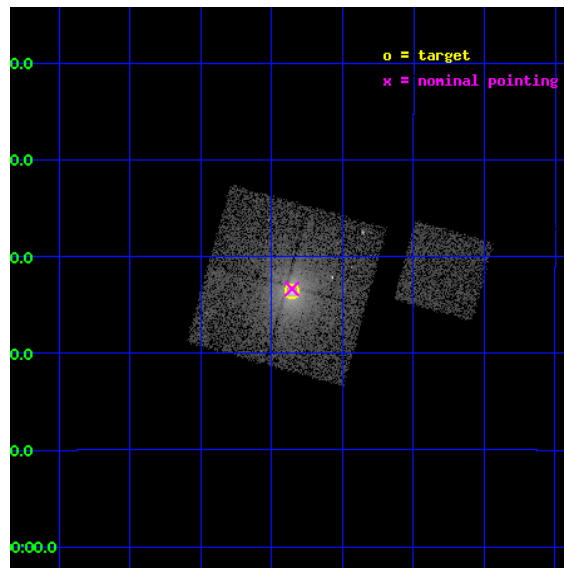
L2 Processing Date : Nov 3 2012

Contents

1	Front	2
2	OBI	3
2.1	OBI	3
2.1.1	Images	3
2.1.2	Bias	3
2.1.3	Parameters	4
2.1.4	Events	4
2.2	Compared Parameters	5
2.3	Aspect	6
2.4	Star Slots	9
2.4.1	Slot 3	9
2.4.2	Slot 4	10
2.4.3	Slot 5	11
2.4.4	Slot 6	12
2.4.5	Slot 7	13
2.5	FID Slots	14
2.5.1	Slot 0	14
2.5.2	Slot 1	15
2.5.3	Slot 2	16
A	Summary	17
A.1	Status	17
A.2	Comments	17

1 Front

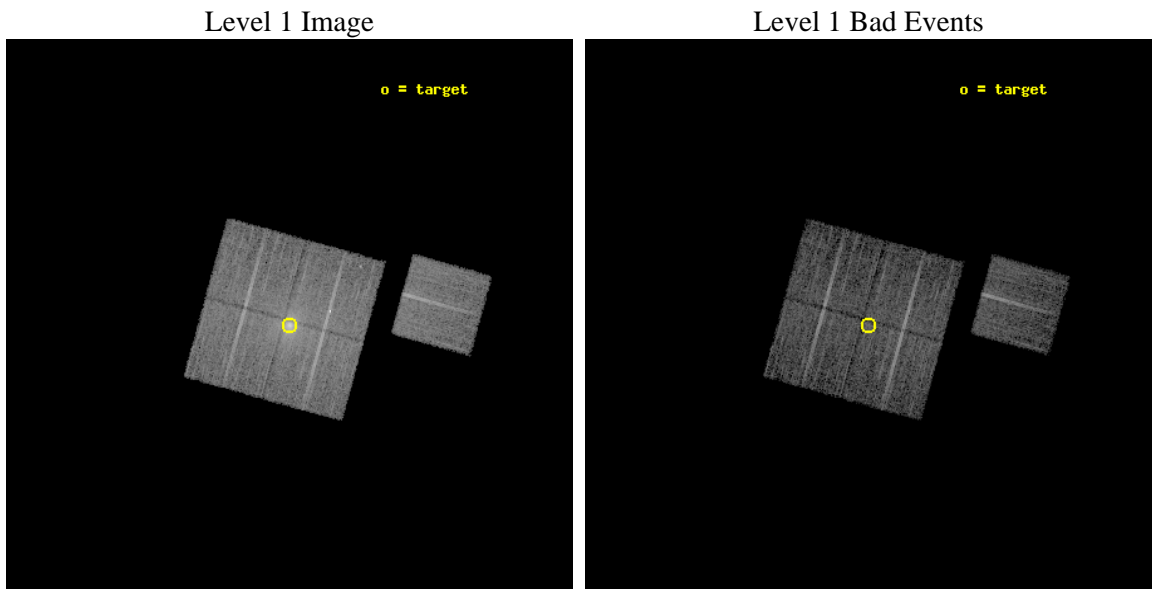
seq_num	800339	Sequence number
obs_id	4183	Observation id
title	THE HIFLUGCS CLUSTER SURVEY: A CORNERSTONE FOR COSMOLOGY	Proposal
observer	Dr. CRAIG SARAZIN	Principal investigator
object	EXO0422	Source name
dtcycle	0	
cycle	P	events from which exps? Prim/Second/Both
ra_targ	66.46375	Observer's specified target RA [deg]
dec_targ	-8.560556	Observer's specified target Dec [deg]
ra_nom	66.464384188904	Nominal RA [deg]
dec_nom	-8.555923562599	Nominal Dec [deg]
roll_nom	105.54743188986	Nominal Roll [deg]
revision	3	Processing version of data
ontime	10133.818040013	Sum of GTIs [s]
livetime	10001.412246912	Livetime [s]
ontime0	10133.818069905	Sum of GTIs [s]
ontime1	10136.958990306	Sum of GTIs [s]
ontime2	10136.959040165	Sum of GTIs [s]
ontime3	10133.818040013	Sum of GTIs [s]
ontime6	10136.959040165	Sum of GTIs [s]
l2events	53677	Number of level 2 events



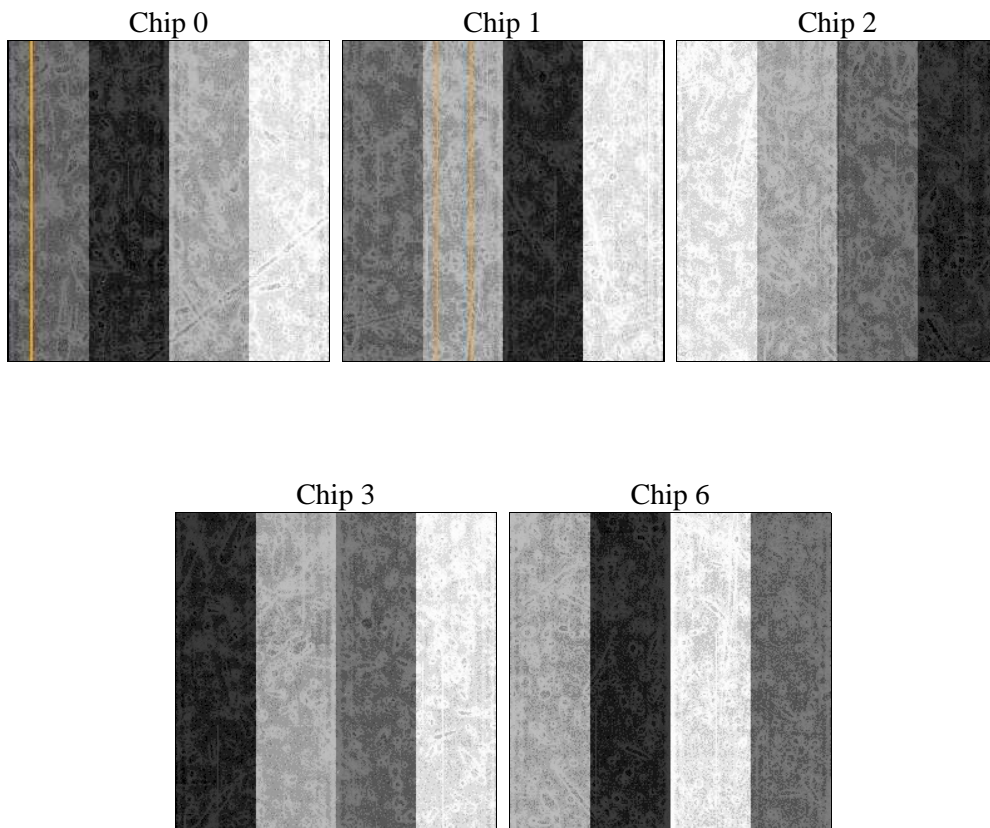
2 OBI

2.1 OBI

2.1.1 Images



2.1.2 Bias



2.1.3 Parameters

obi_num	0	Obi number	sched_exp_time	10000.000000	[s] Scheduled observation exposure time
ascdsver	8.4.5	Processing system revision	ontime	10133.818040013	Sum of GTIs [s]
caldbver	4.5.2	 	ontime0	10133.818069905	Sum of GTIs [s]
date	2012-11-03T14:29:41	Date and time of file creation	ontime1	10136.958990306	Sum of GTIs [s]
revision	3	Processing version of data	ontime2	10136.959040165	Sum of GTIs [s]
			ontime3	10133.818040013	Sum of GTIs [s]
			ontime6	10136.959040165	Sum of GTIs [s]
			l1events	315685	Number of level 1 events

2.1.4 Events

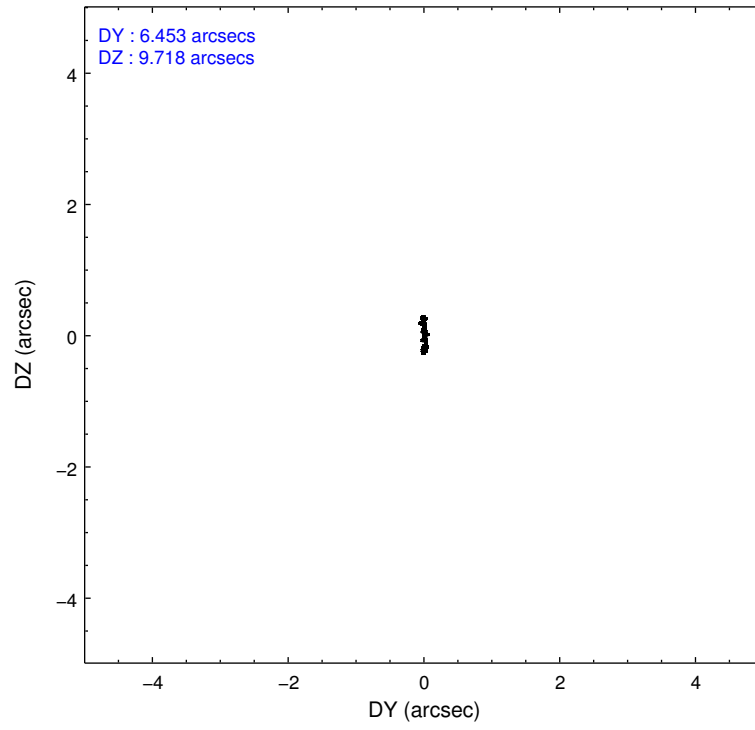
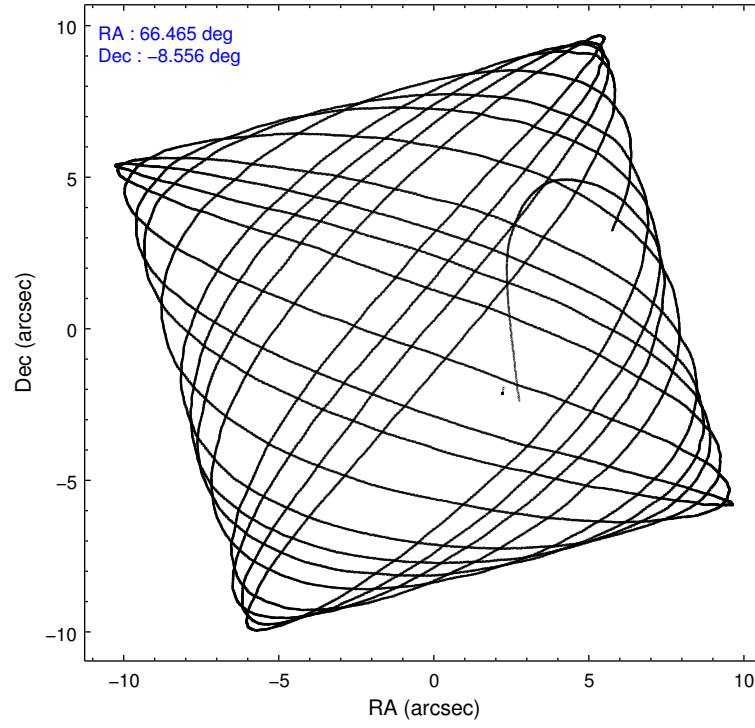
	ccd 0	ccd 1	ccd 2	ccd 3	ccd 6
level 1 events	55614	60145	68611	75070	56245
rejected events	47189	49318	54376	54122	50830
rejected %	84%	81%	79%	72%	90%

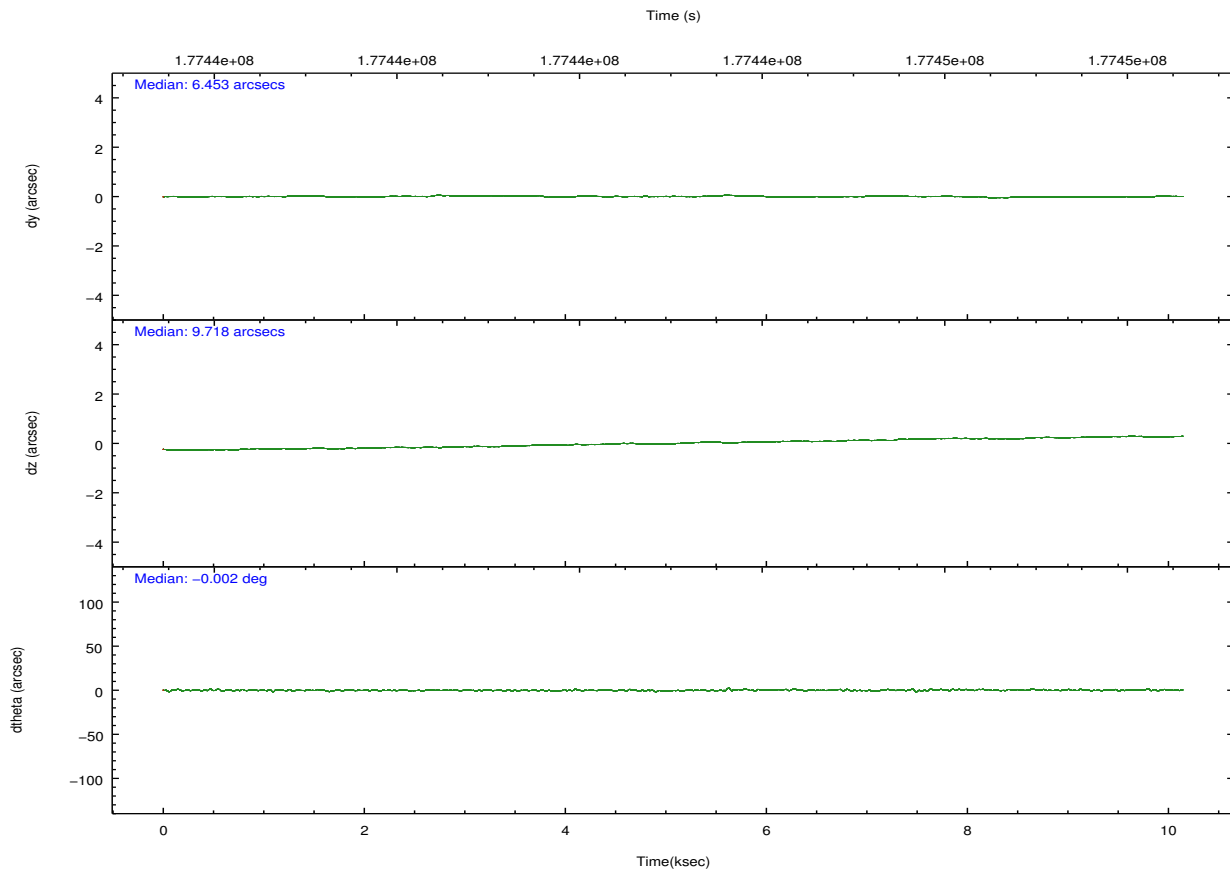
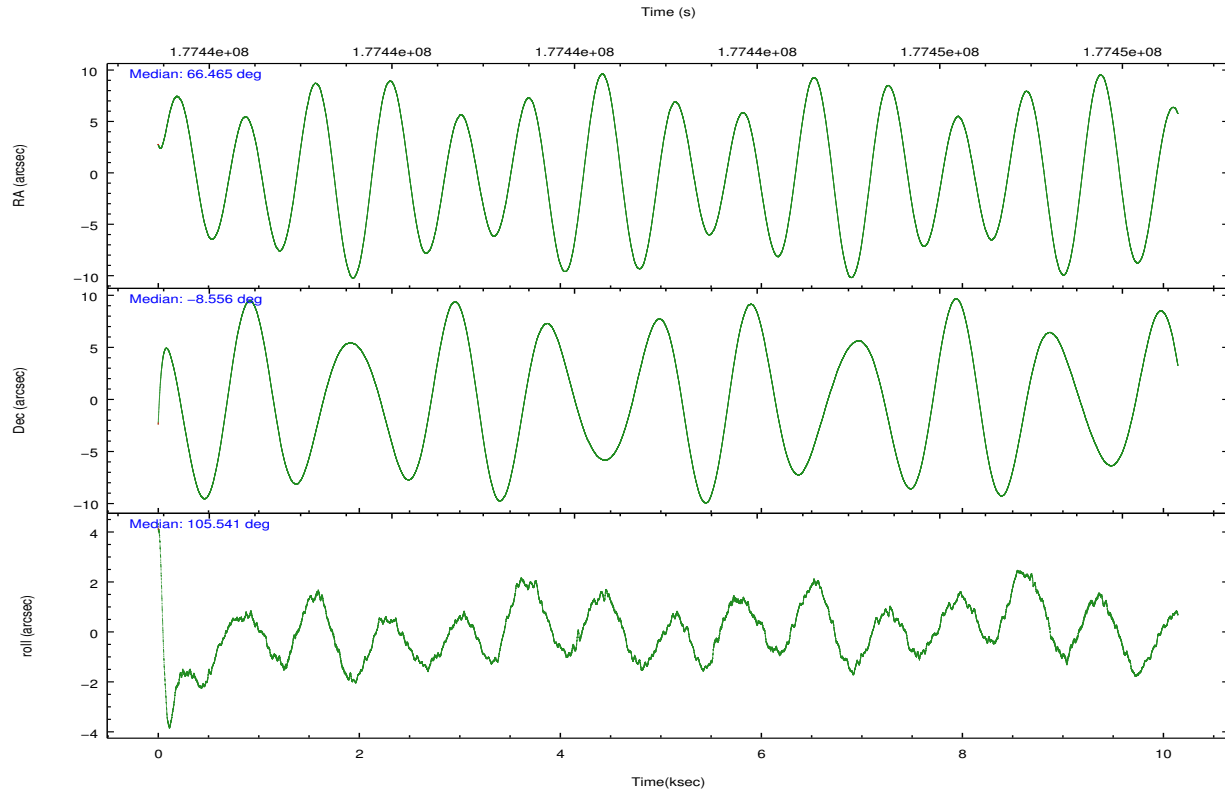
	ccd 0	ccd 1	ccd 2	ccd 3	ccd 6
grade 0 events	4764	6385	9607	15553	2099
	8%	10%	14%	20%	3%
grade 1 events	41	37	111	89	25
	0%	0%	0%	0%	0%
grade 2 events	1623	1838	2190	2600	1287
	2%	3%	3%	3%	2%
grade 3 events	758	960	980	1005	681
	1%	1%	1%	1%	1%
grade 4 events	664	874	851	1036	651
	1%	1%	1%	1%	1%
grade 5 events	1999	2038	1971	2309	2247
	3%	3%	2%	3%	3%
grade 6 events	1137	1397	1211	1352	1203
	2%	2%	1%	1%	2%
grade 7 events	44628	46616	51690	51126	48052
	80%	77%	75%	68%	85%

2.2 Compared Parameters

Parameter	Planned	Actual	Parameter	Planned	Actual
Instrument	ACIS	ACIS	Obspar format version number	7	7
Detector	ACIS-01236	ACIS-01236	Obspar file type	PREDICTED	ACTUAL
Grating	NONE	NONE	Obspar update status	NONE	UPDATED
Data mode	VFAINT	VFAINT	Number of optional ACIS chips dropped	0	0
Observation mode	POINTING	POINTING	On-chip summing requested	N	N
[deg] Pointing RA	66.484202	66.46438418890375	Subarray requested	NONE	NONE
[deg] Pointing Dec	-8.575063	-8.555923562598986	Alternating exposures requested	N	N
[deg] Pointing Roll	105.341689	105.5474318898646	[s] Primary exposure time	0.000000	3.1
[mm] SIM focus pos	-0.782348	-0.7809083437167272			
[mm] SIM defocus	0	0.001439871863259334			
[mm] SIM translation stage pos	-233.592463	-233.5874344608287			
[mm] SIM translation stage offset	0	-0.005018542100998502			
[s] Observation start time (MET)	177438097.184000	177436626.0613			
Observation start date	2003-08-16T16:20:33	2003-08-16T15:57:06			
[s] Observation end time (MET)	177448097.184000	177449023.43683			
Observation end date	2003-08-16T19:07:13	2003-08-16T19:23:43			
Read mode	TIMED	TIMED			

2.3 Aspect



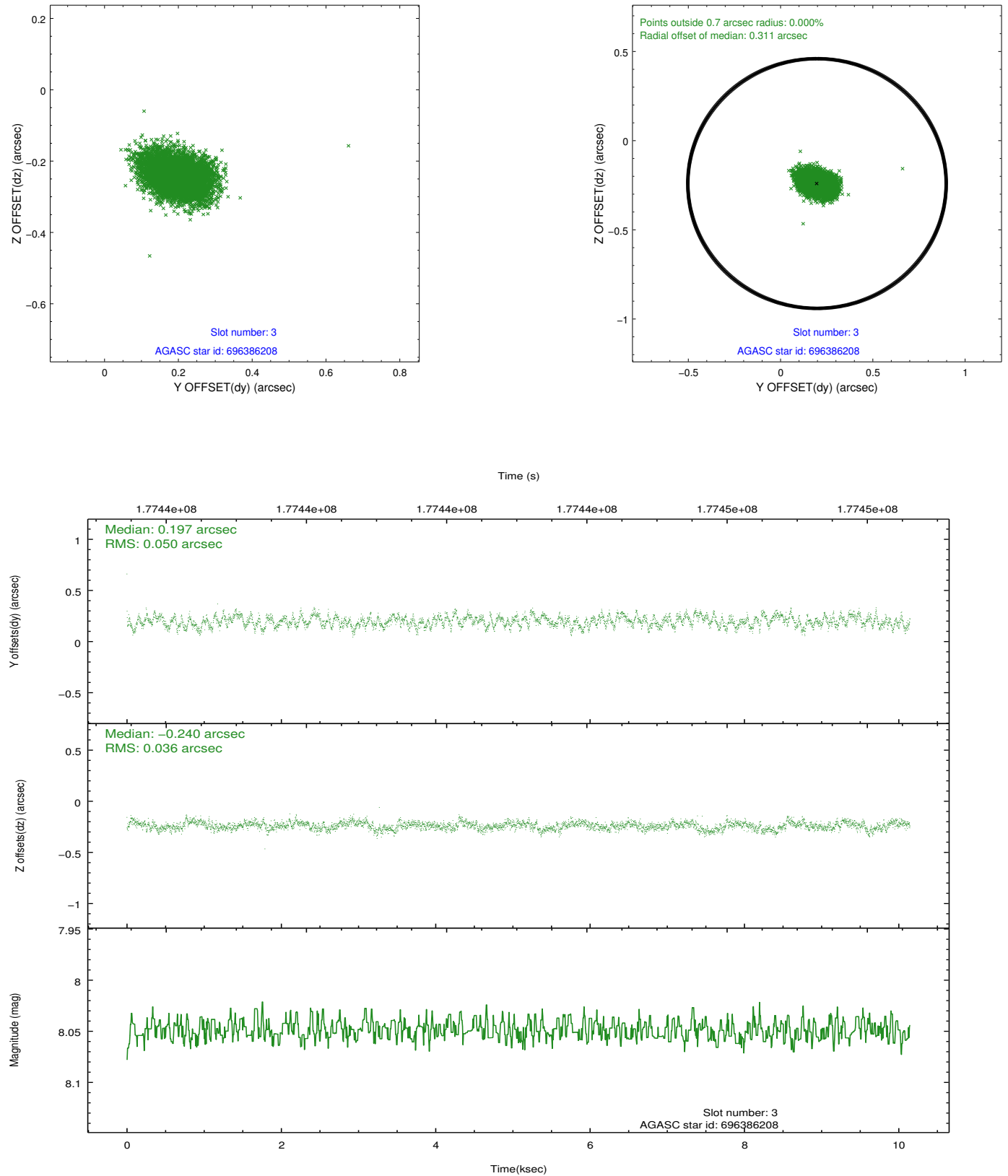


Slot Statistics

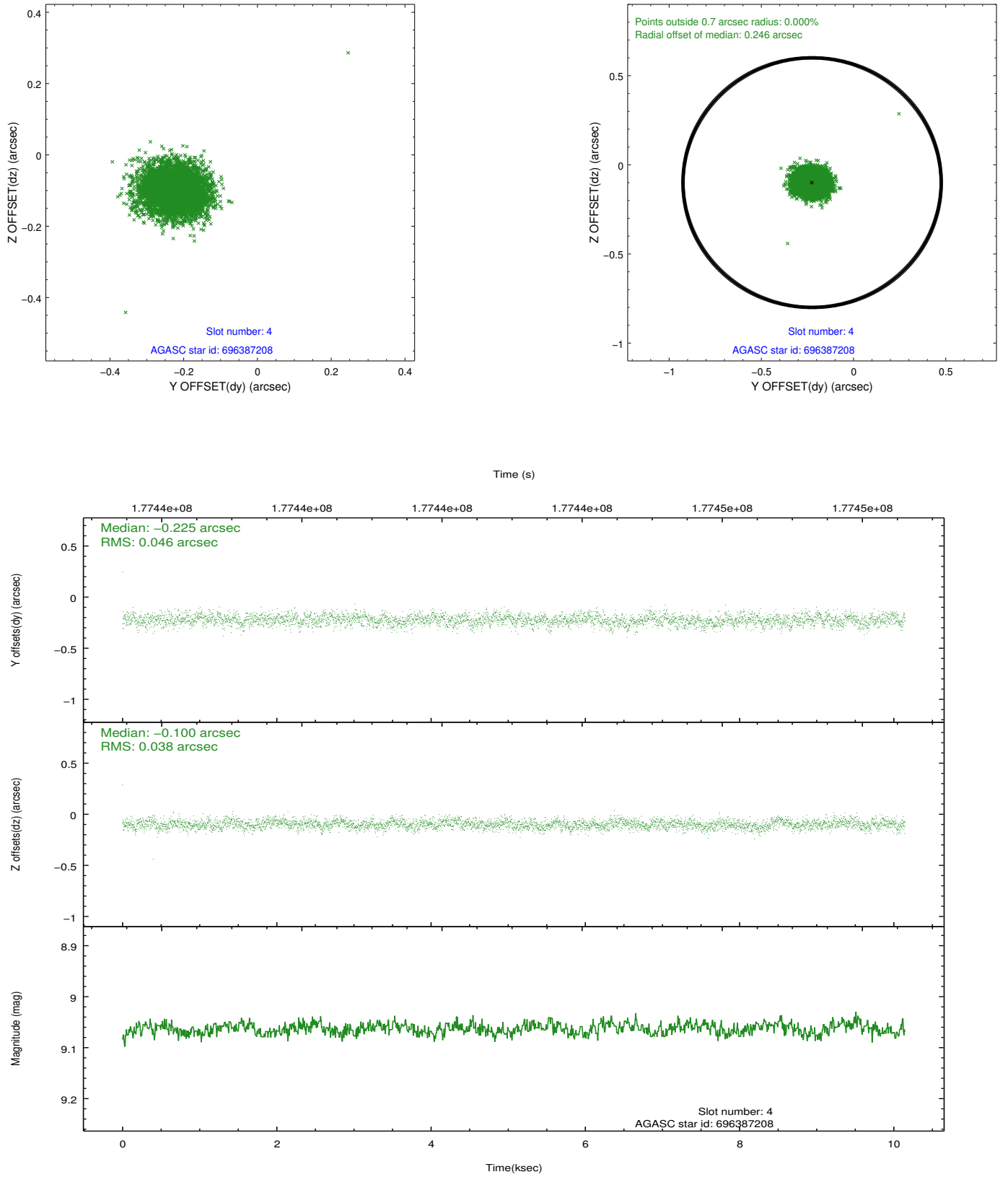
slot	status	id	mag	n_pts	med_dy	med_dz	dr1	dr2	ra	dec	mean_y	mean_z
0	FID	ACIS-I-1	7.24	2473	-0.021	0.027	0.010	0.018	0.000000	0.000000	933.22	-833.16
1	FID	ACIS-I-4	7.18	2472	0.085	0.015	0.009	0.015	0.000000	0.000000	2153.66	1066.37
2	FID	ACIS-I-5	7.22	2473	-0.162	0.029	0.008	0.013	0.000000	0.000000	-1814.25	1064.84
3	GUIDE	696386208	8.05	4946	0.197	-0.240	0.064	0.105	66.191076	-9.223516	-1975.90	1622.20
4	GUIDE	696387208	9.06	4944	-0.225	-0.100	0.062	0.102	66.200801	-8.036400	2136.53	462.13
5	GUIDE	696518688	9.29	4947	0.074	0.006	0.100	0.172	66.849427	-8.392964	288.34	-1427.18
6	GUIDE	696522872	8.06	4948	-0.148	0.210	0.054	0.087	66.882030	-8.191582	955.90	-1731.73
7	GUIDE	696538136	8.99	4945	0.101	0.127	0.076	0.126	66.785429	-8.898543	-1406.33	-725.03

2.4 Star Slots

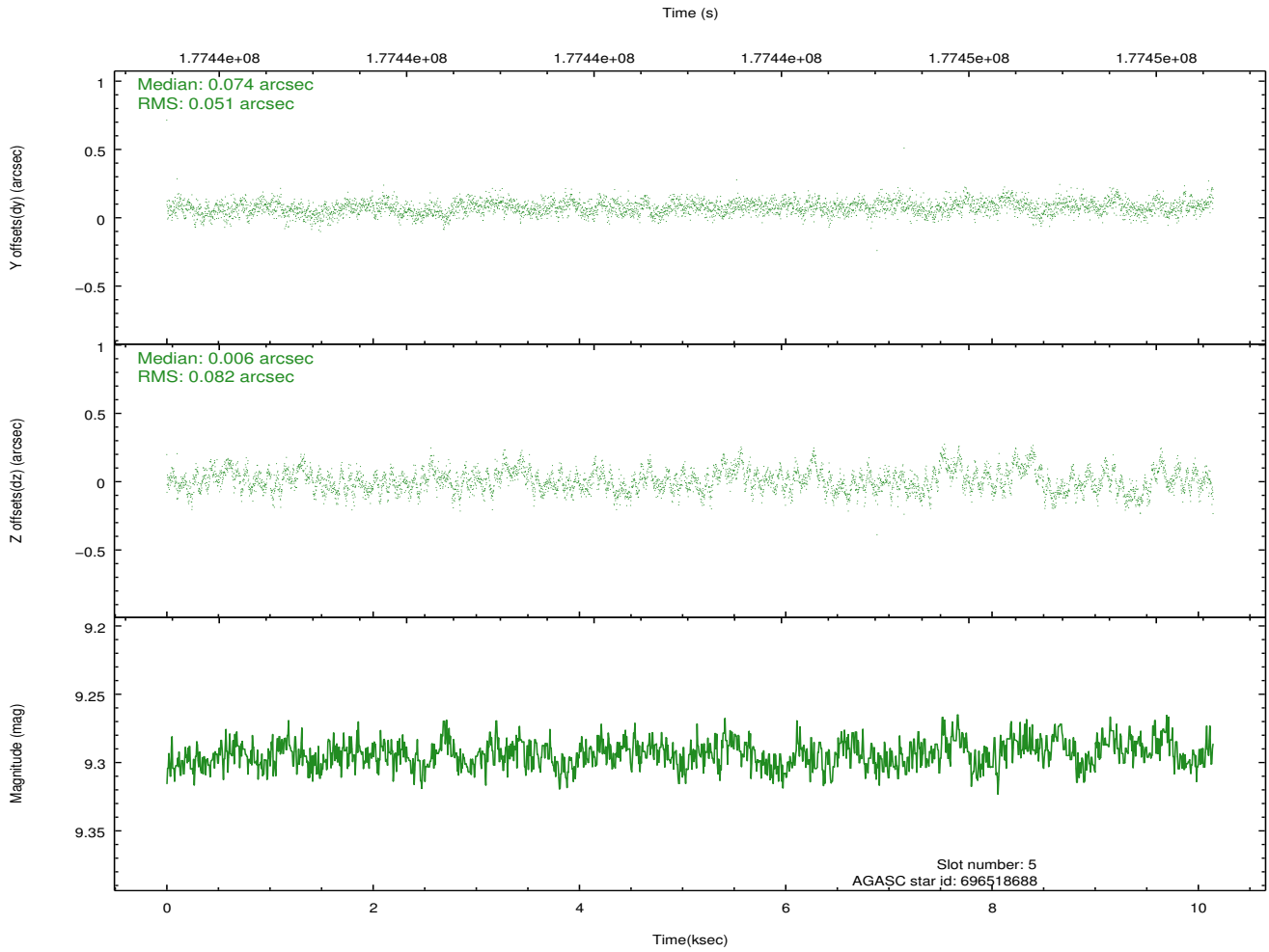
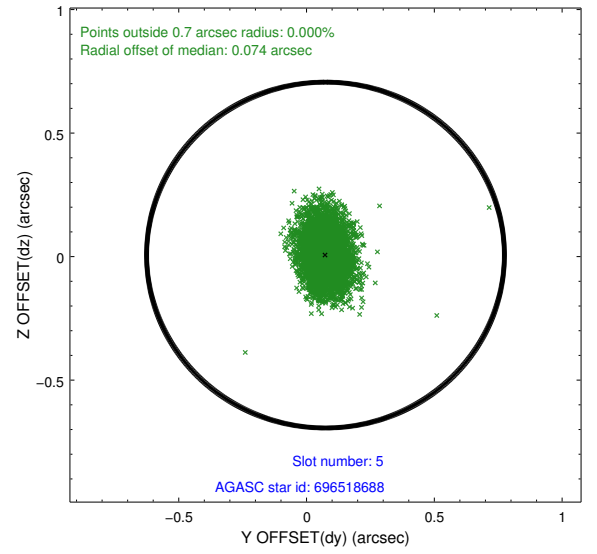
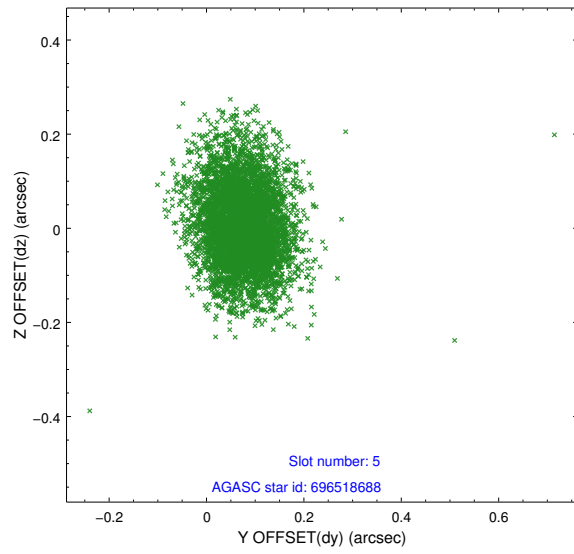
2.4.1 Slot 3



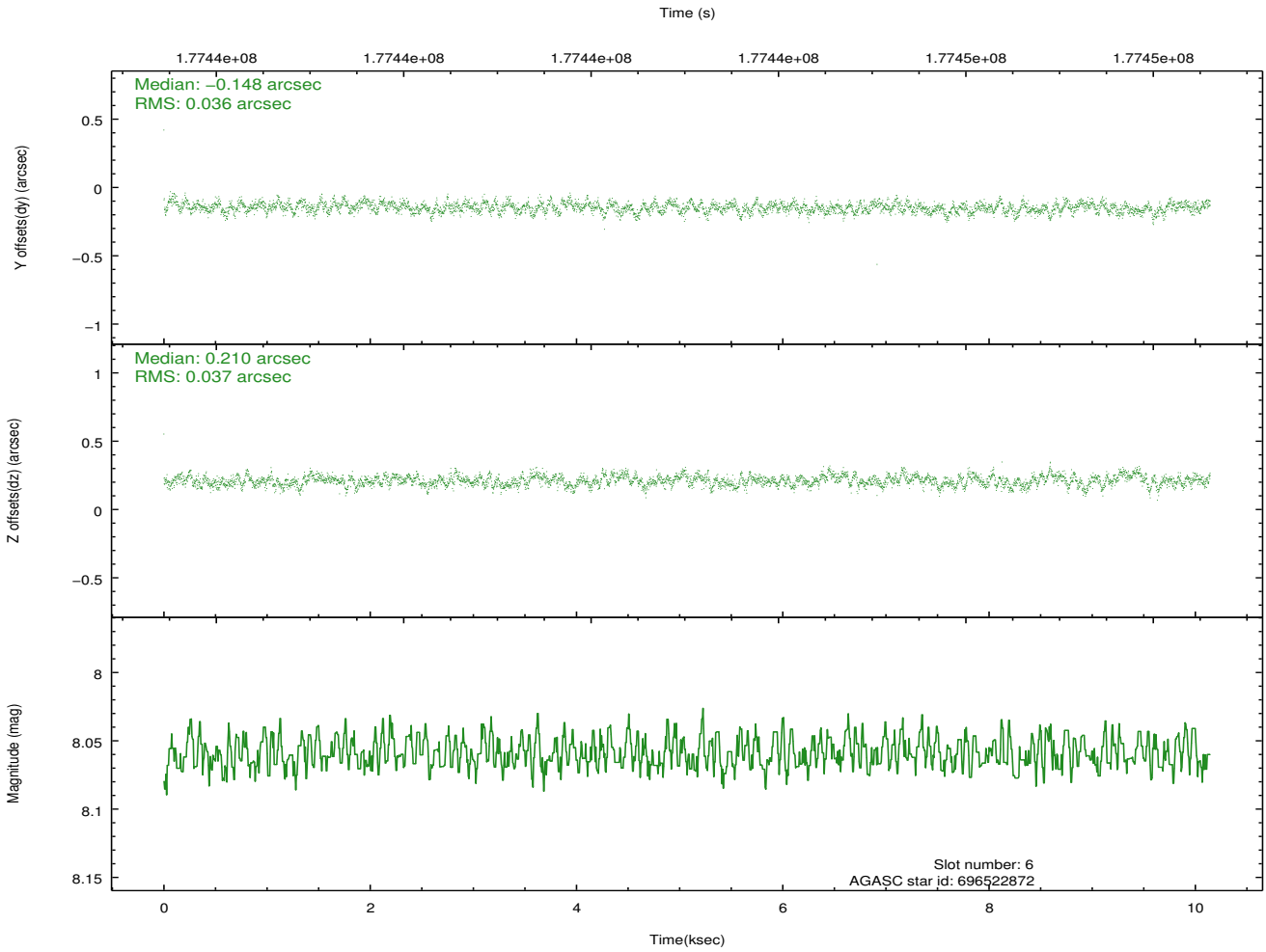
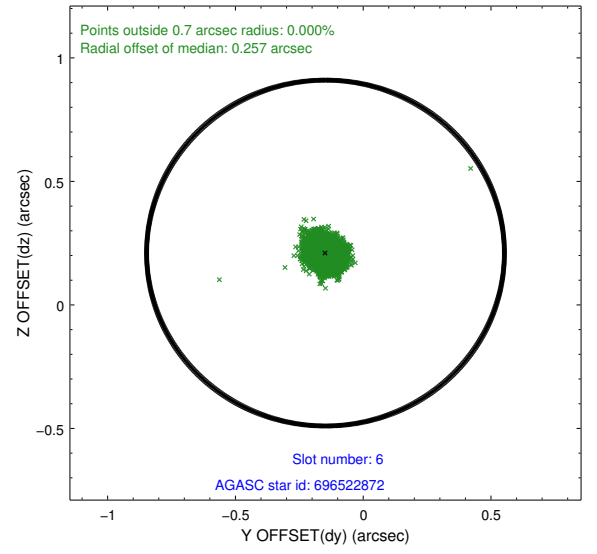
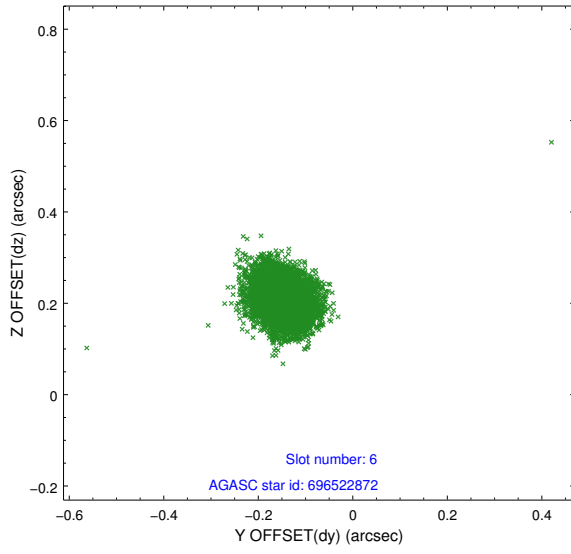
2.4.2 Slot 4



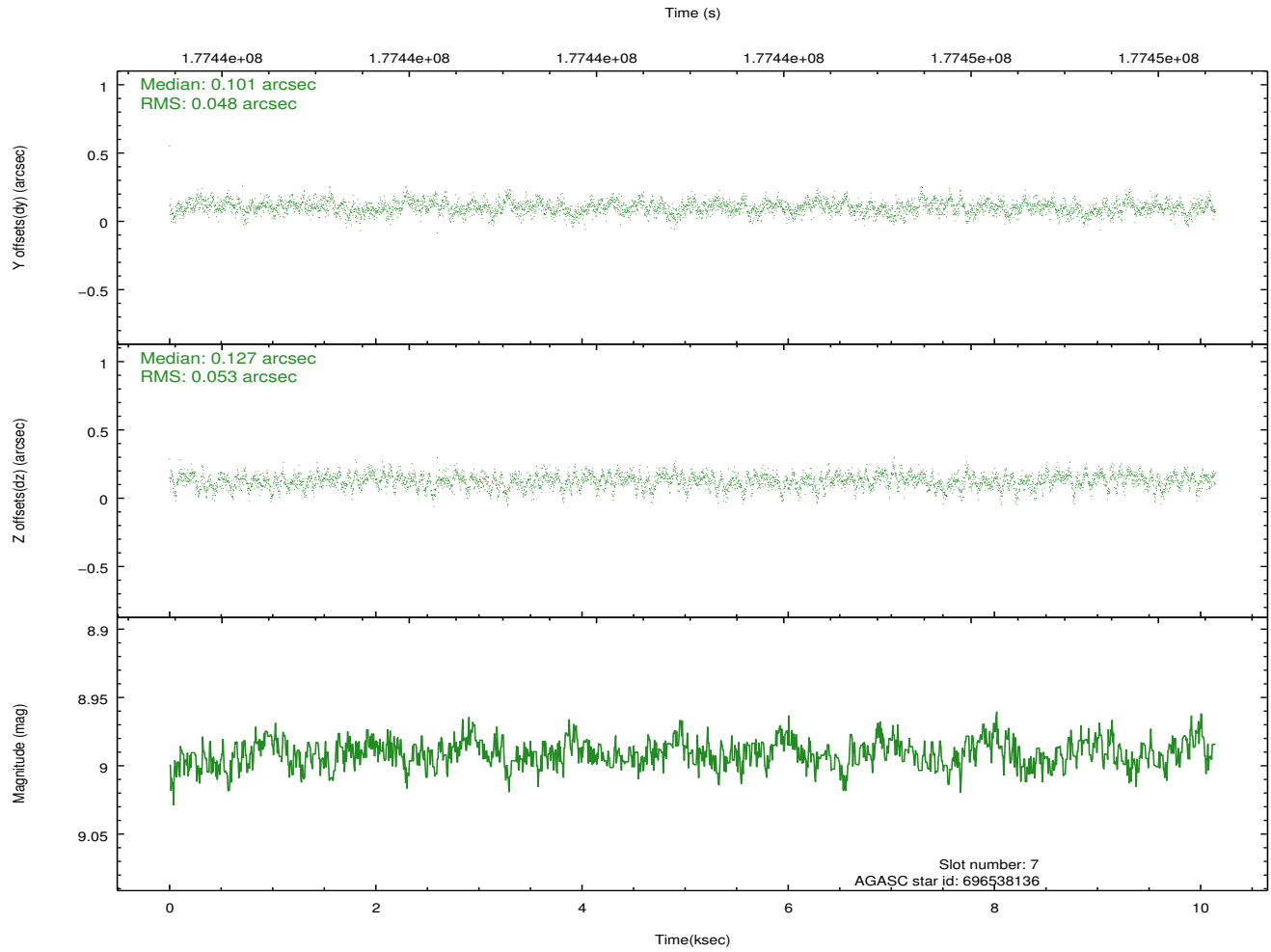
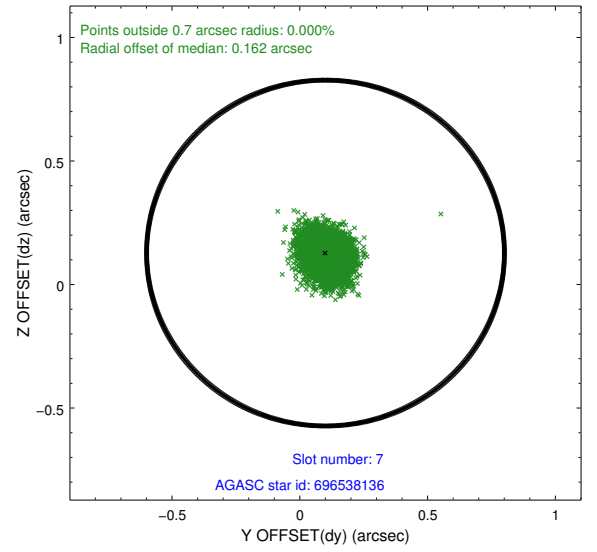
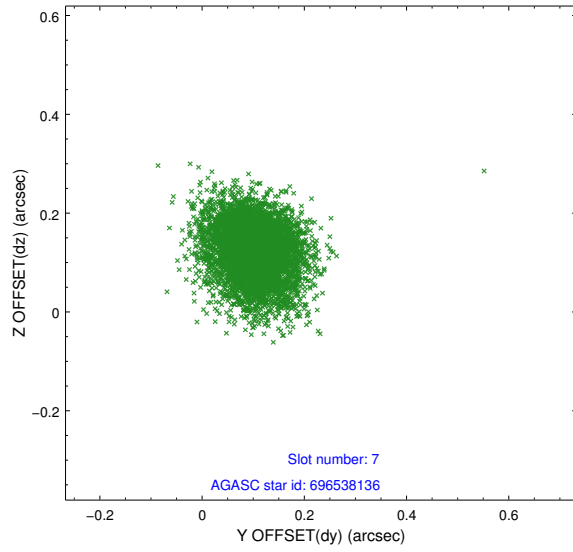
2.4.3 Slot 5



2.4.4 Slot 6

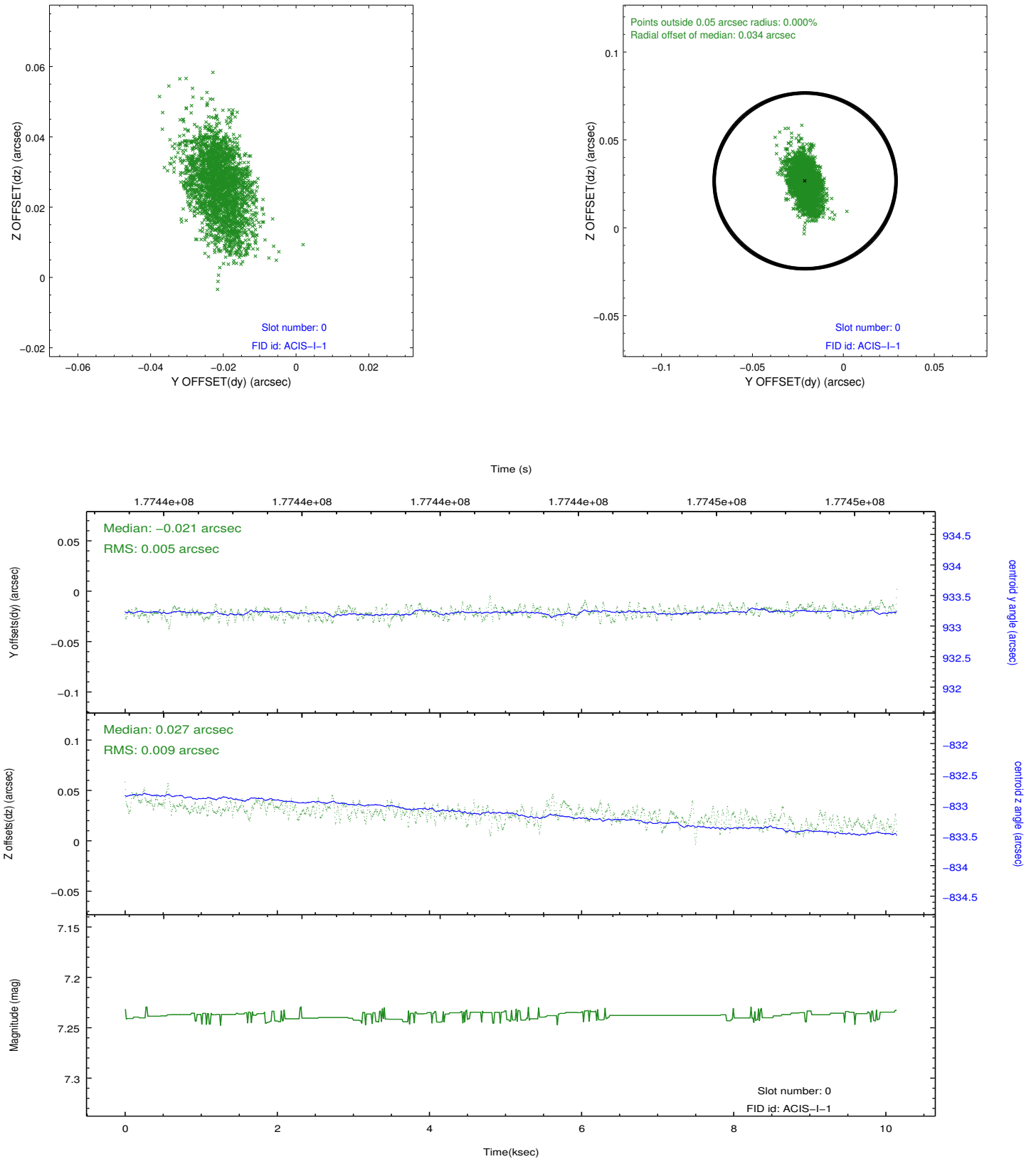


2.4.5 Slot 7

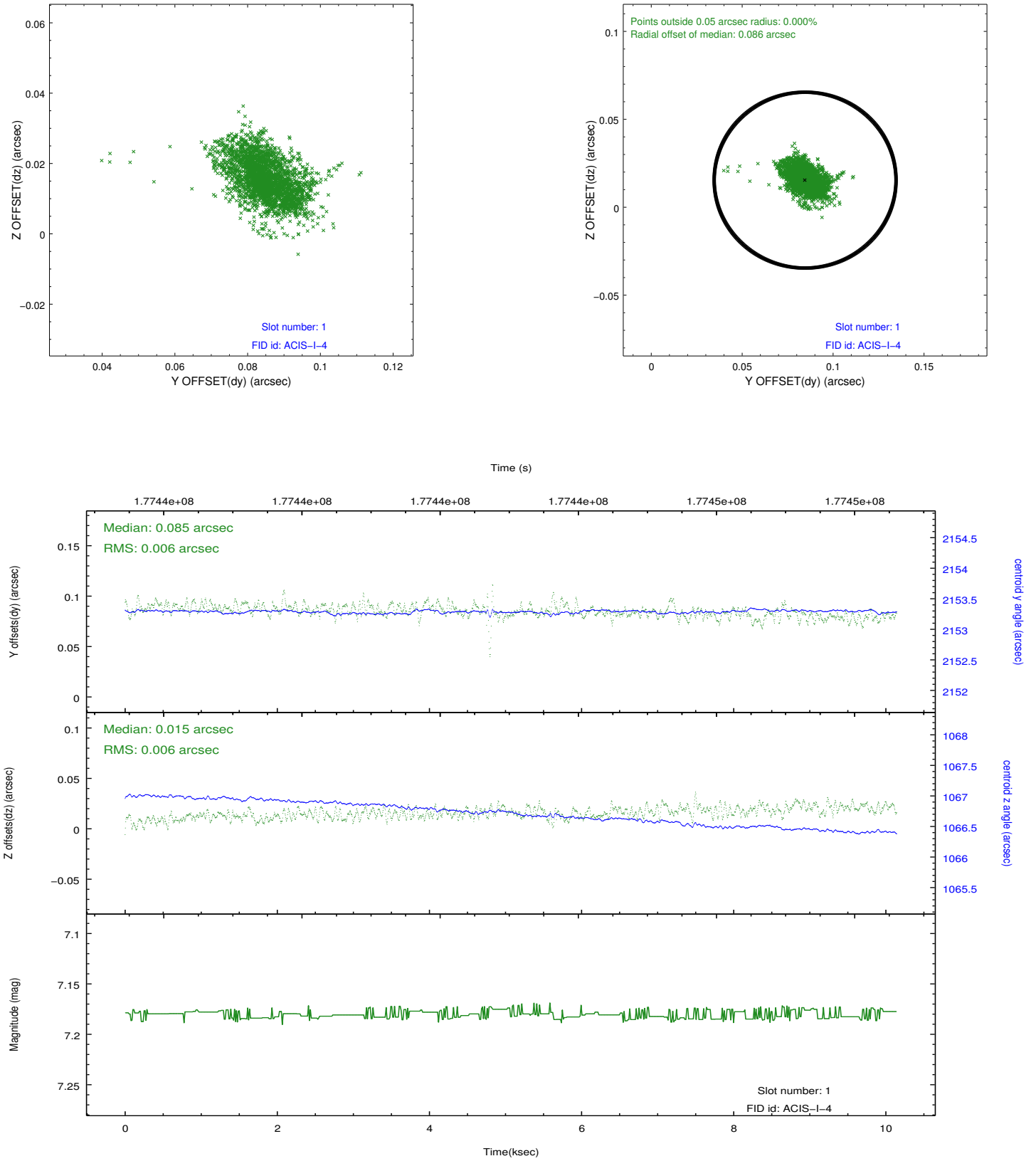


2.5 FID Slots

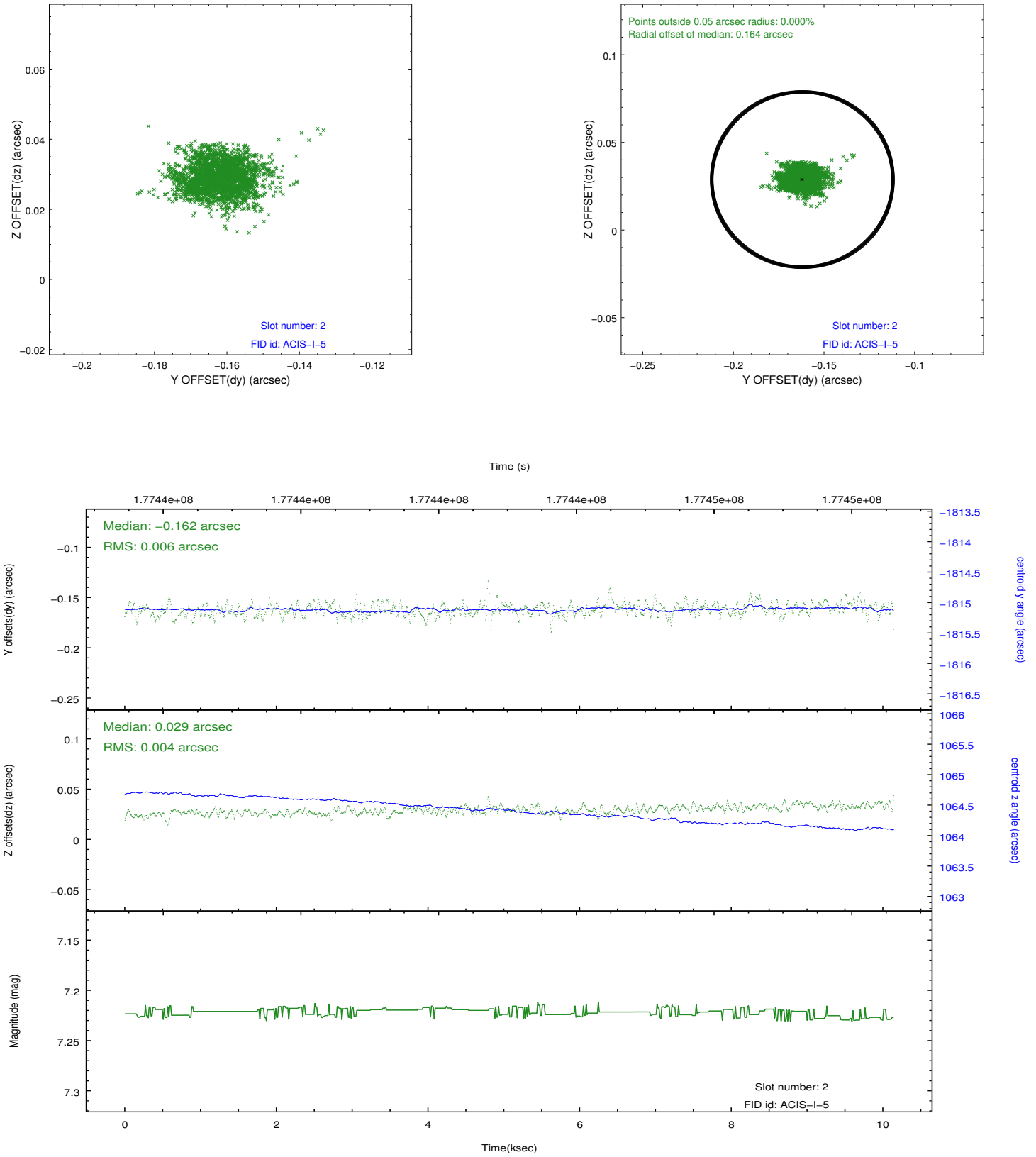
2.5.1 Slot 0



2.5.2 Slot 1



2.5.3 Slot 2



A Summary

A.1 Status

V&V Scientist	Beth Sundheim
V&V Date (YYYY-MM-DD)	2012.11.27
V&V Edition	1
V&V Disposition and Status	OK
V&V Charge Time	10.136

A.2 Comments