

V&V Reference Report

L2 ASCDS Version : 8.4.5

Observation 3588 - L2 Version 3
Chandra X-Ray Center

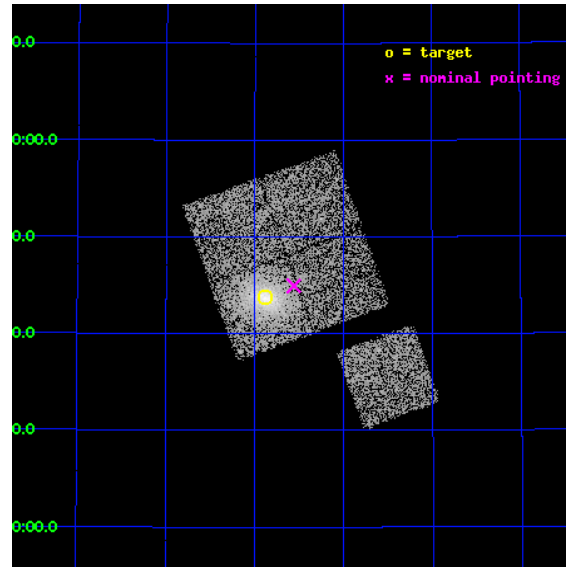
L2 Processing Date : Oct 21 2012

Contents

1	Front	2
2	OBI	3
2.1	OBI	3
2.1.1	Images	3
2.1.2	Bias	3
2.1.3	Parameters	4
2.1.4	Events	4
2.2	Compared Parameters	5
2.3	Aspect	6
2.4	Star Slots	9
2.4.1	Slot 3	9
2.4.2	Slot 4	10
2.4.3	Slot 5	11
2.4.4	Slot 6	12
2.4.5	Slot 7	13
2.5	FID Slots	14
2.5.1	Slot 0	14
2.5.2	Slot 1	15
2.5.3	Slot 2	16
A	Summary	17
A.1	Status	17
A.2	Comments	17

1 Front

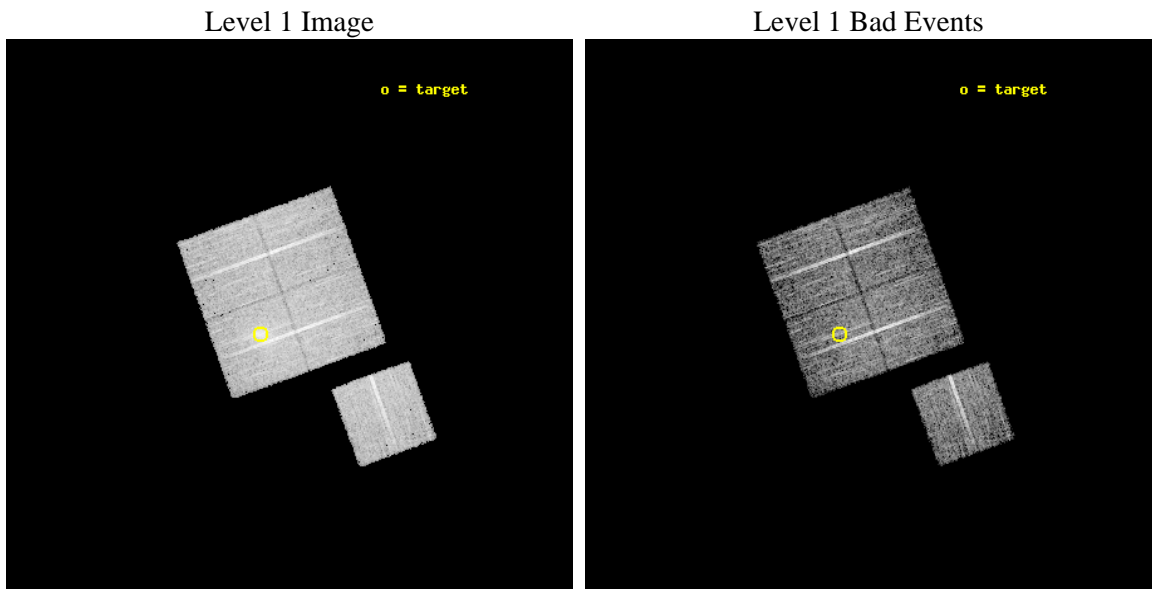
seq_num	800309	Sequence number
obs_id	3588	Observation id
title	X-RAY/SZ DETERMINATION OF COSMOLOGICAL PARAMETERS	Proposal title
observer	DR. LEON VANSPEYBROECK	Principal investigator
object	A773	Source name
dtcycle	0	
cycle	P	events from which exps? Prim/Second/Both
ra_targ	139.47125	Observer's specified target RA [deg]
dec_targ	51.728889	Observer's specified target Dec [deg]
ra_nom	139.38989969151	Nominal RA [deg]
dec_nom	51.749177437689	Nominal Dec [deg]
roll_nom	160.20960854438	Nominal Roll [deg]
revision	3	Processing version of data
ontime	9522.8870837688	Sum of GTIs [s]
livetime	9398.4635533719	Livetime [s]
ontime0	9522.7639637589	Sum of GTIs [s]
ontime1	9519.6640036106	Sum of GTIs [s]
ontime2	9522.8460437655	Sum of GTIs [s]
ontime3	9522.8870837688	Sum of GTIs [s]
ontime6	9522.7229237556	Sum of GTIs [s]
l2events	28131	Number of level 2 events



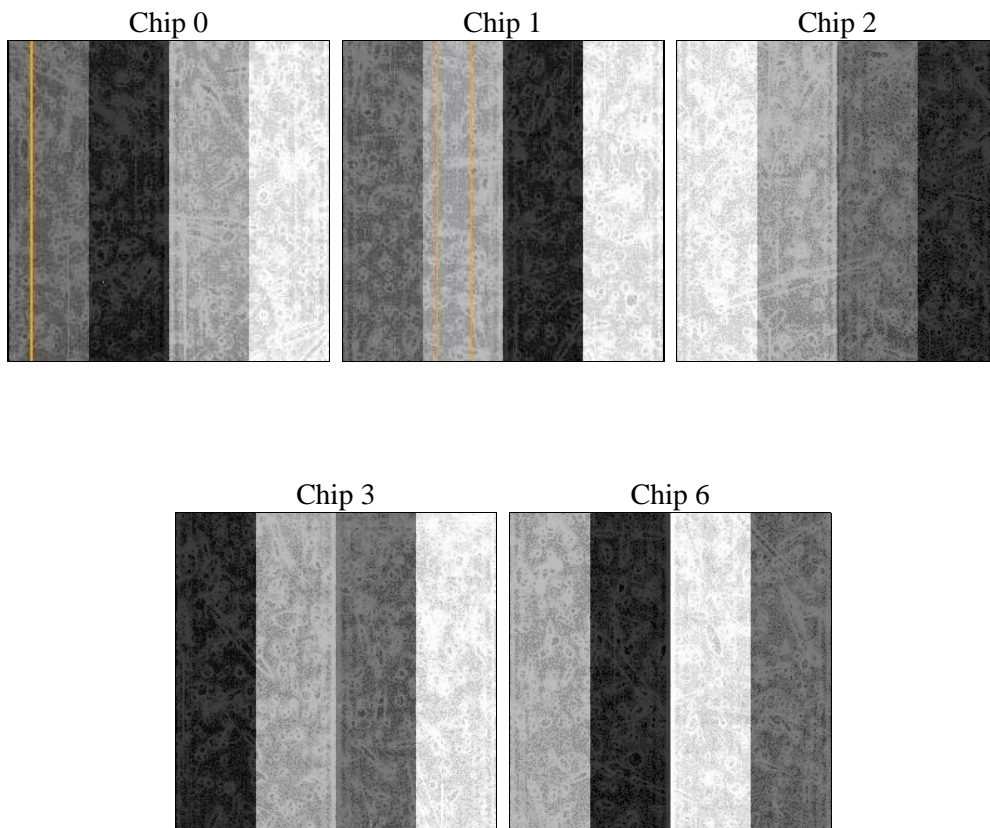
2 OBI

2.1 OBI

2.1.1 Images



2.1.2 Bias



2.1.3 Parameters

obi_num	0	Obi number	sched_exp_time	9401.764000	[s] Scheduled observation exposure time
ascdsver	8.4.5	Processing system revision	ontime	9522.8870837688	Sum of GTIs [s]
caldsver	4.5.2	 	ontime0	9522.7639637589	Sum of GTIs [s]
date	2012-10-21T04:57:29	Date and time of file creation	ontime1	9519.6640036106	Sum of GTIs [s]
revision	3	Processing version of data	ontime2	9522.8460437655	Sum of GTIs [s]
			ontime3	9522.8870837688	Sum of GTIs [s]
			ontime6	9522.7229237556	Sum of GTIs [s]
			l1events	249160	Number of level 1 events

2.1.4 Events

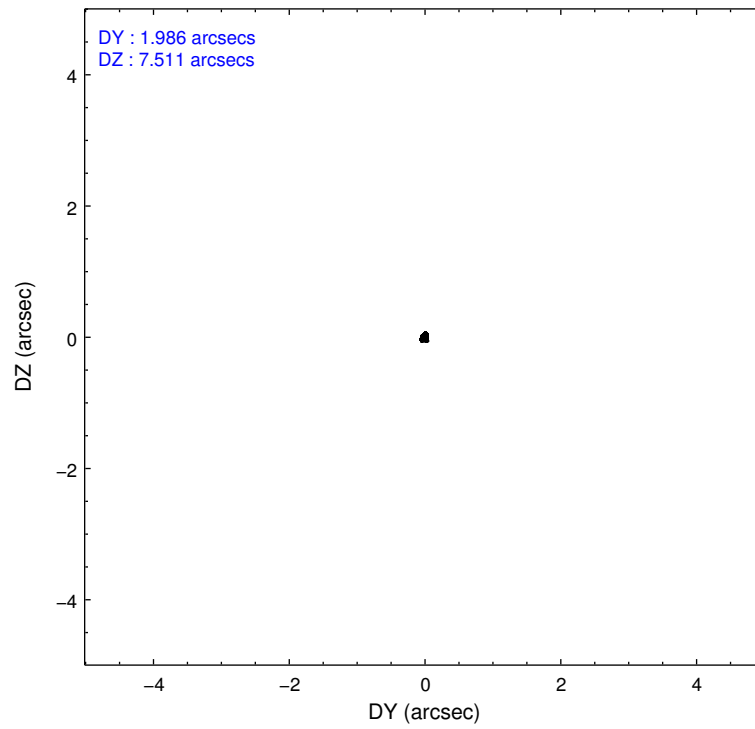
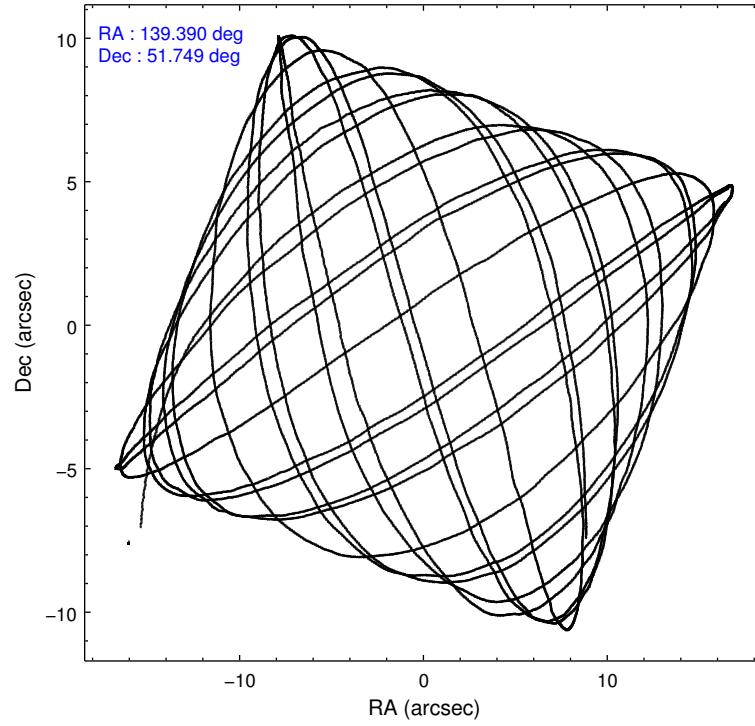
	ccd 0	ccd 1	ccd 2	ccd 3	ccd 6
level 1 events	45656	46360	51752	55776	49616
rejected events	40774	40805	47018	43346	44698
rejected %	89%	88%	90%	77%	90%

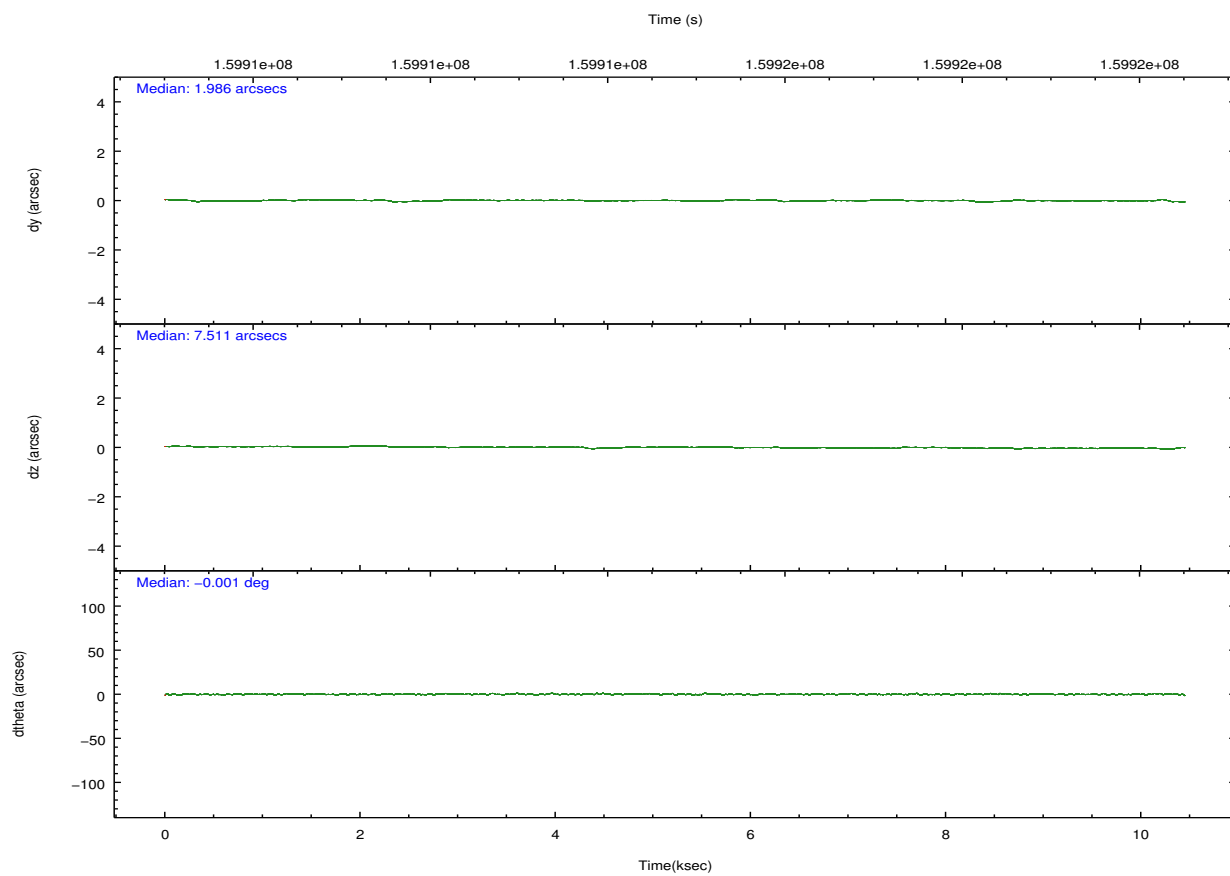
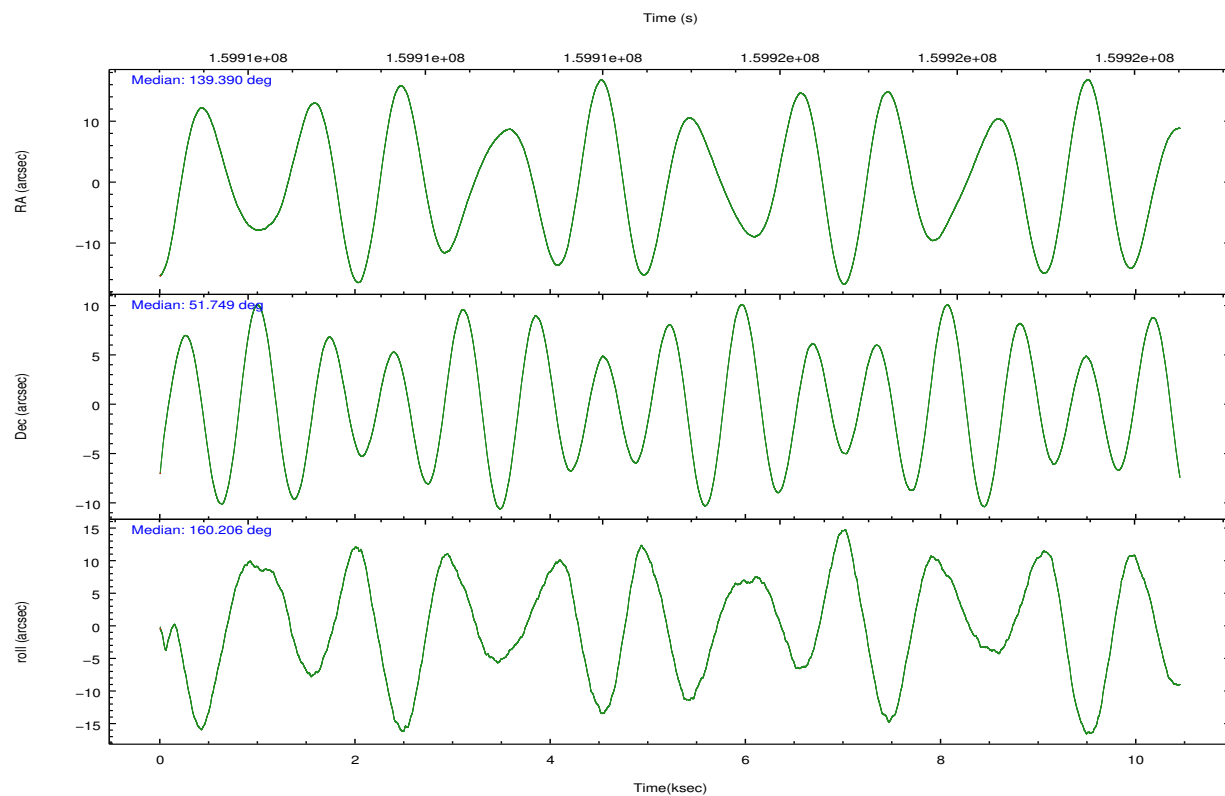
	ccd 0	ccd 1	ccd 2	ccd 3	ccd 6
grade 0 events	1676	2095	1835	8116	1730
	3%	4%	3%	14%	3%
grade 1 events	20	15	40	52	14
	0%	0%	0%	0%	0%
grade 2 events	1086	1123	1027	1723	1011
	2%	2%	1%	3%	2%
grade 3 events	580	653	550	789	585
	1%	1%	1%	1%	1%
grade 4 events	574	607	523	774	546
	1%	1%	1%	1%	1%
grade 5 events	1650	1828	1555	1872	1867
	3%	3%	3%	3%	3%
grade 6 events	968	1078	800	1032	1047
	2%	2%	1%	1%	2%
grade 7 events	39102	38961	45422	41418	42816
	85%	84%	87%	74%	86%

2.2 Compared Parameters

Parameter	Planned	Actual	Parameter	Planned	Actual
Instrument	ACIS	ACIS	Obspar format version number	7	7
Detector	ACIS-01236	ACIS-01236	Obspar file type	PREDICTED	ACTUAL
Grating	NONE	NONE	Obspar update status	NONE	UPDATED
Data mode	VFAINT	VFAINT	Number of optional ACIS chips dropped	0	0
Observation mode	POINTING	POINTING	On-chip summing requested	N	N
[deg] Pointing RA	139.433395	139.389899691507	Subarray requested	NONE	NONE
[deg] Pointing Dec	51.754122	51.74917743768926	Alternating exposures requested	N	N
[deg] Pointing Roll	159.966764	160.2096085443751	[s] Primary exposure time	0.000000	3.1
[mm] SIM focus pos	-0.782348	-0.7809083437167272			
[mm] SIM defocus	0	0.001439871863259334			
[mm] SIM translation stage pos	-225.840463	-225.8433433320239			
[mm] SIM translation stage offset	-7.752	-7.749109670905796			
[s] Observation start time (MET)	159910587.184000	159909197.58193			
Observation start date	2003-01-25T19:35:23	2003-01-25T19:13:17			
[s] Observation end time (MET)	159919988.184000	159920302.9449			
Observation end date	2003-01-25T22:12:04	2003-01-25T22:18:22			
Read mode	TIMED	TIMED			

2.3 Aspect



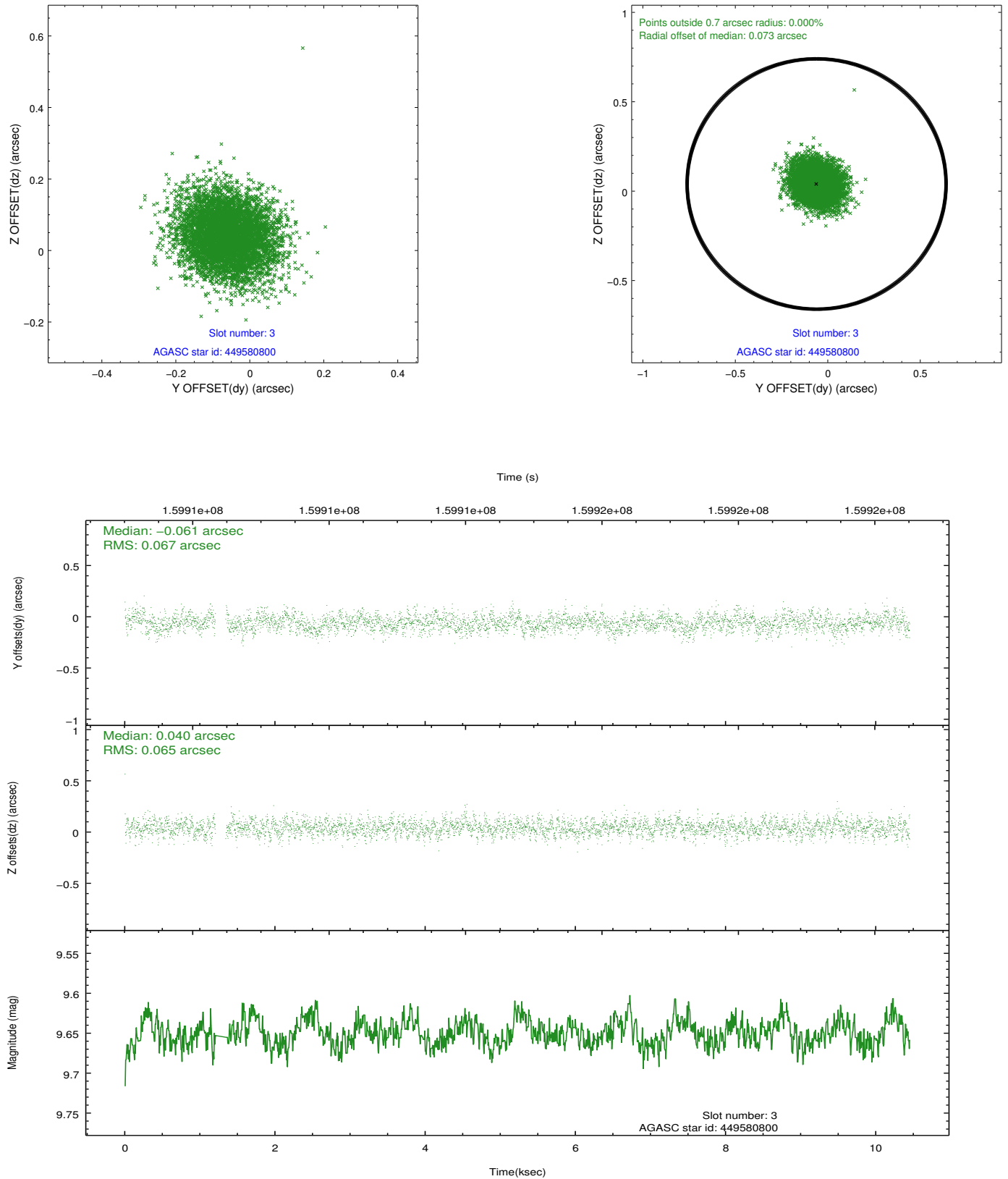


Slot Statistics

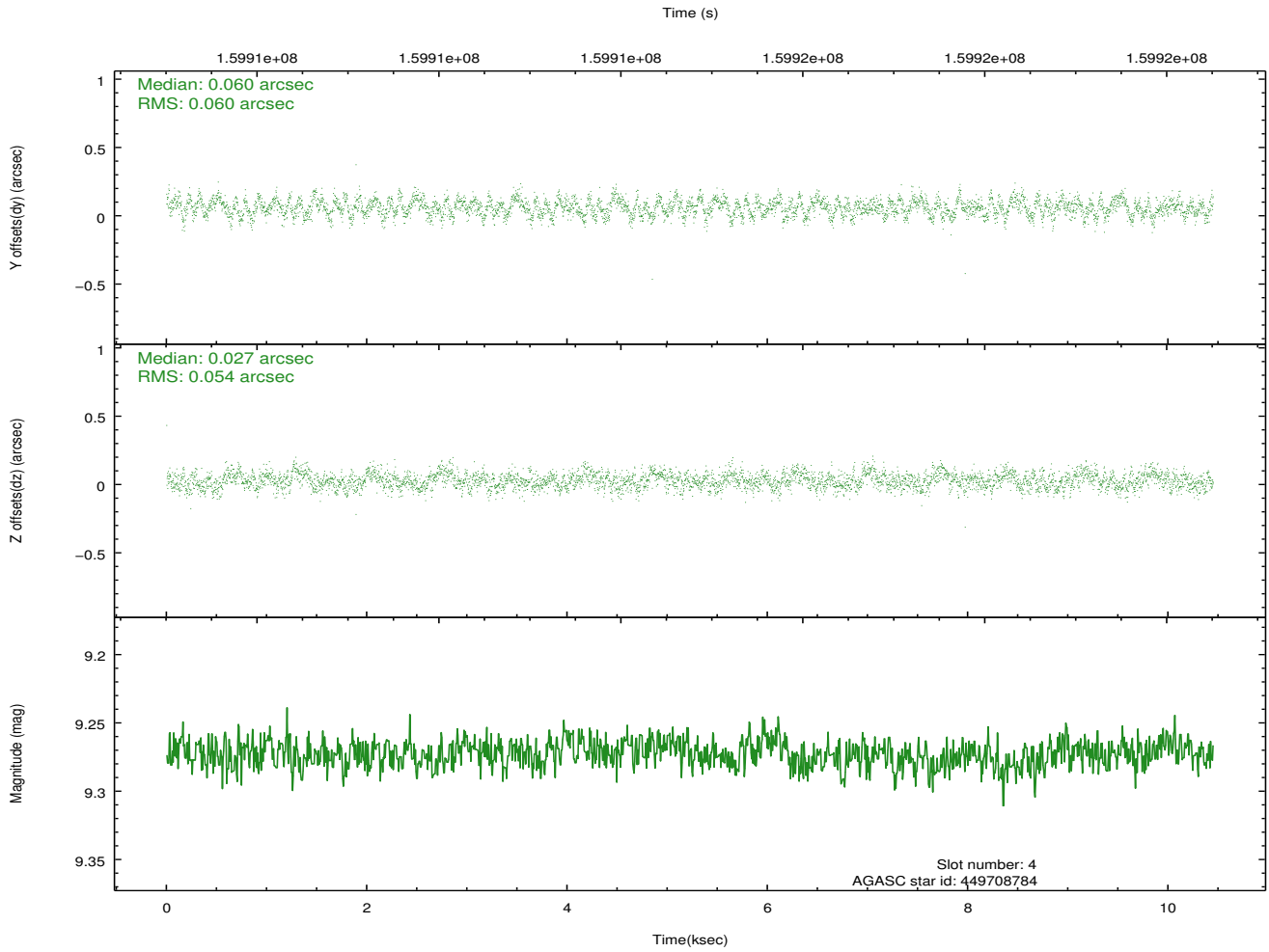
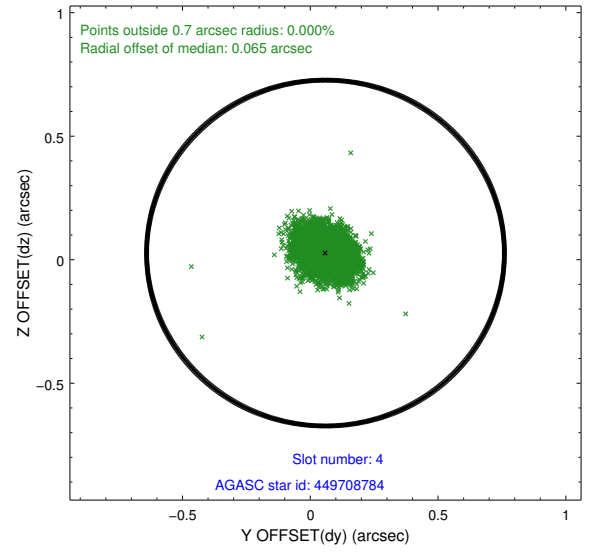
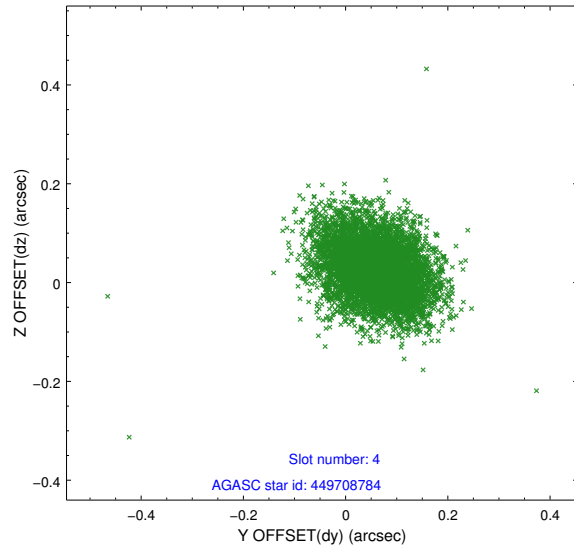
slot	status	id	mag	n_pts	med_dy	med_dz	dr1	dr2	ra	dec	mean_y	mean_z
0	FID	ACIS-I-1	7.23	2549	0.082	-0.051	0.006	0.011	0.000000	0.000000	937.76	-990.05
1	FID	ACIS-I-5	7.22	2549	-0.167	0.096	0.006	0.011	0.000000	0.000000	-1810.30	907.29
2	FID	ACIS-I-6	7.27	2549	-0.006	0.026	0.007	0.011	0.000000	0.000000	402.70	1552.28
3	GUIDE	449580800	9.65	5021	-0.061	0.040	0.099	0.161	138.731484	52.256174	2075.03	-1174.71
4	GUIDE	449708784	9.27	5097	0.060	0.027	0.085	0.136	139.281247	51.322176	-210.33	1577.97
5	GUIDE	449712984	8.75	5095	-0.036	-0.139	0.086	0.138	139.803051	51.633381	-924.17	123.81
6	GUIDE	449713472	9.47	5095	-0.002	0.089	0.110	0.168	140.340736	52.203366	-1322.41	-2216.65
7	GUIDE	498865336	9.20	5095	0.040	-0.013	0.111	0.179	139.050858	52.564533	1786.83	-2456.32

2.4 Star Slots

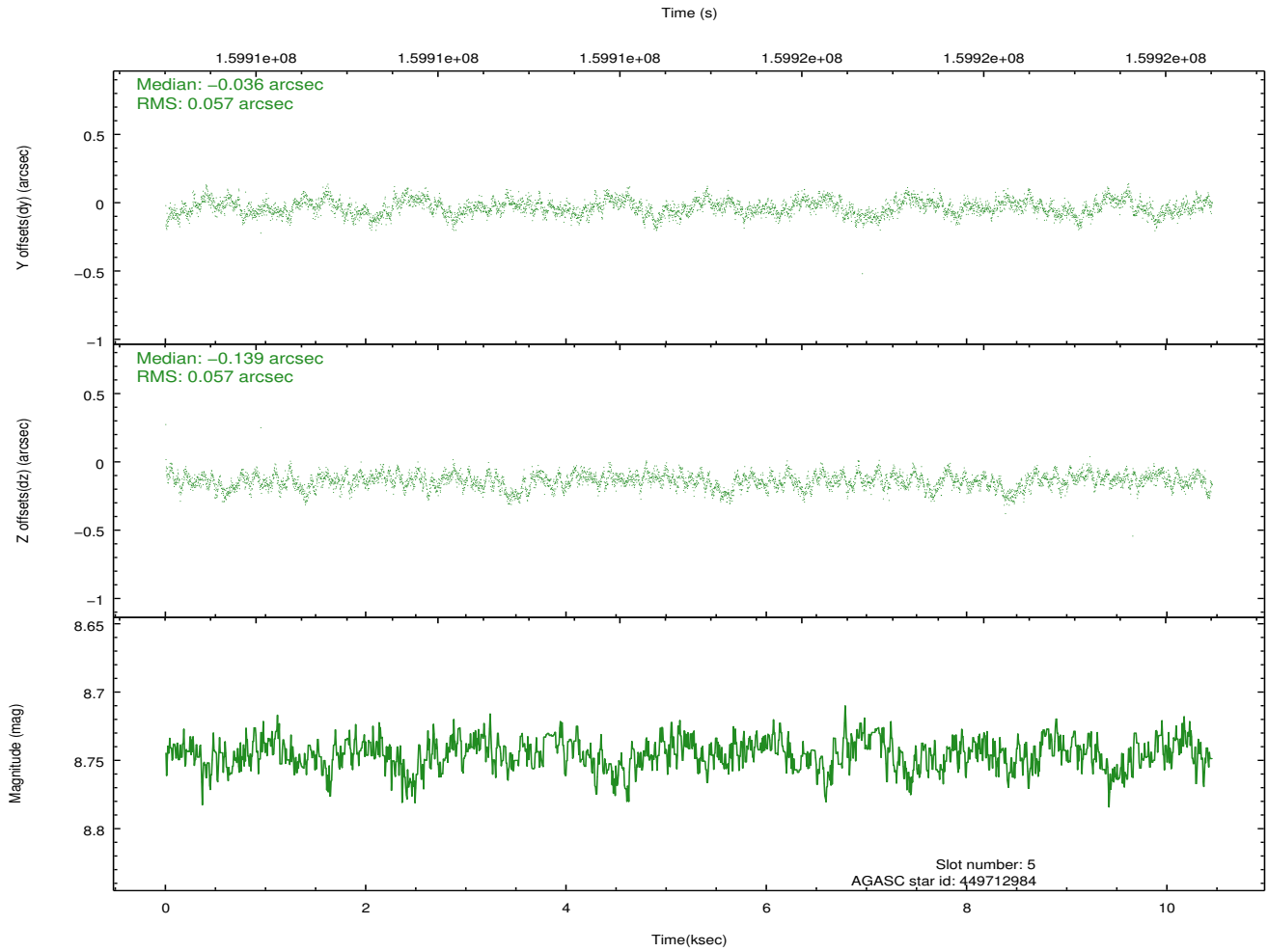
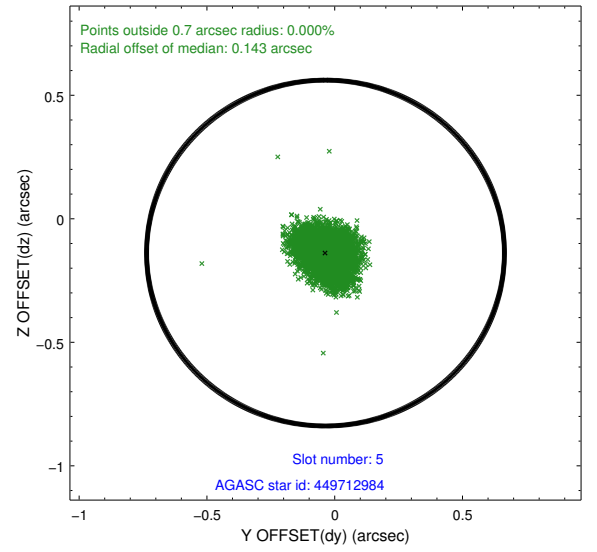
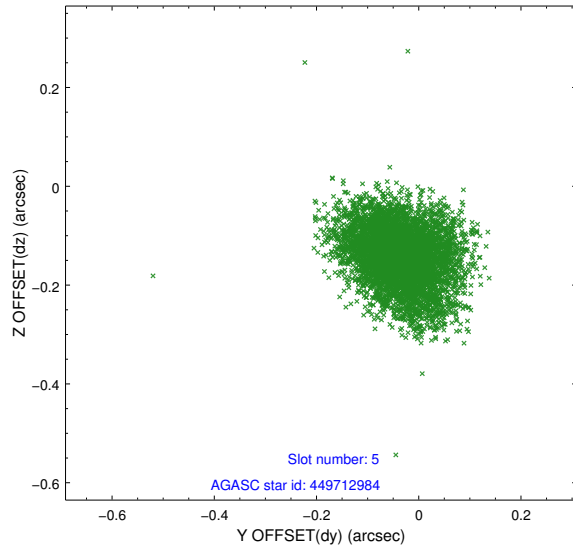
2.4.1 Slot 3



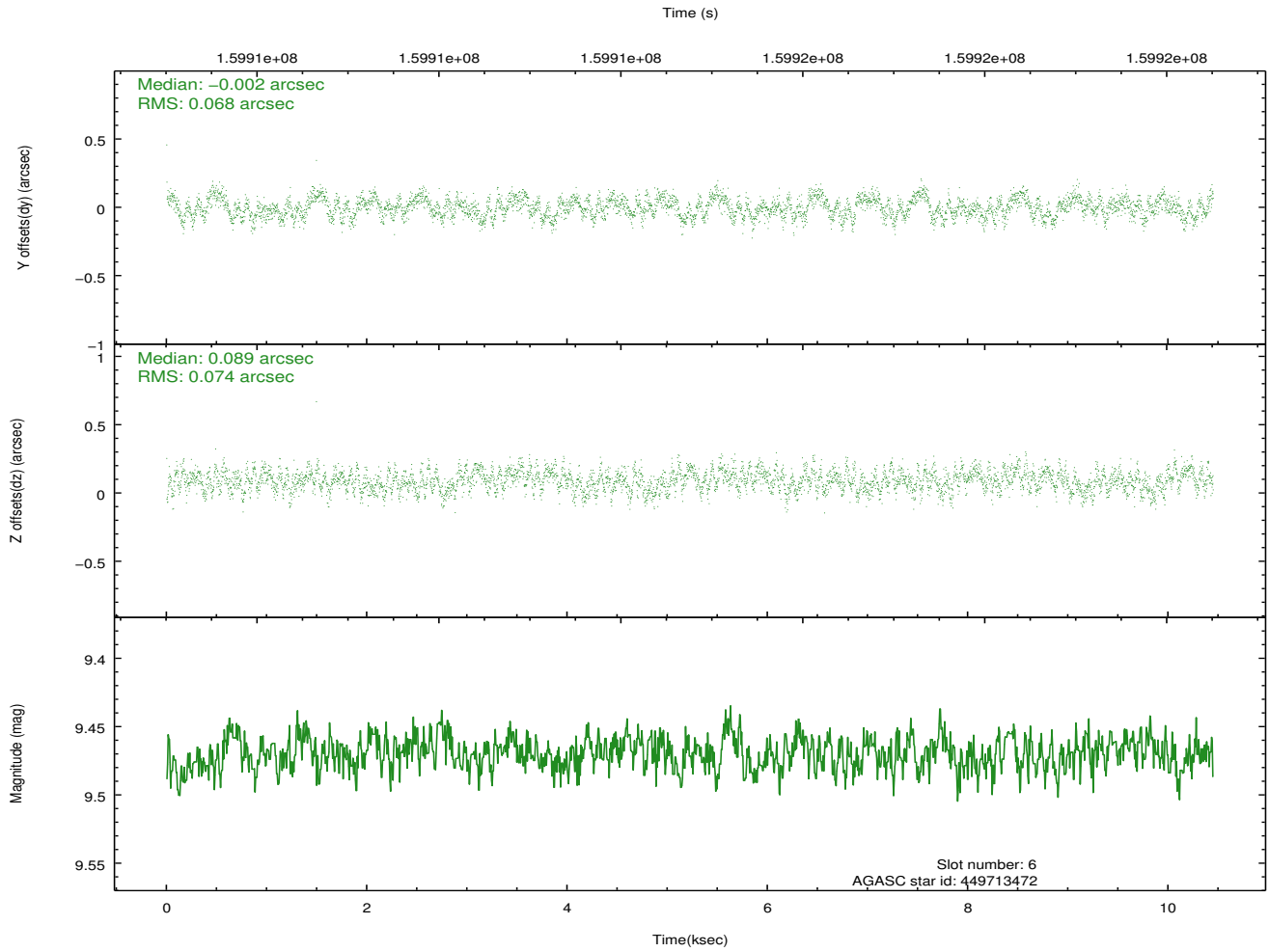
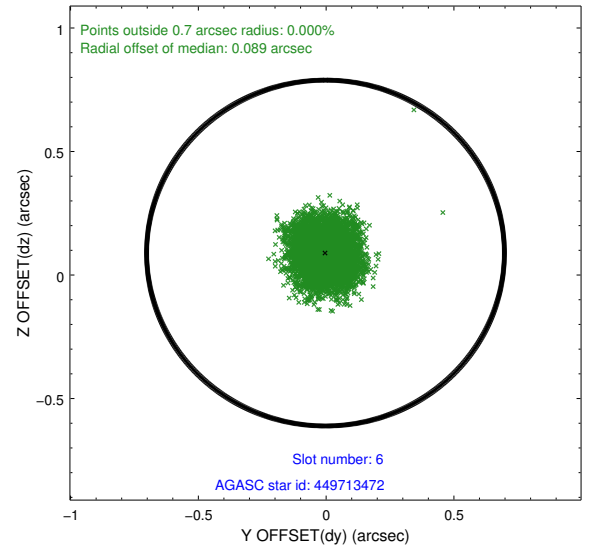
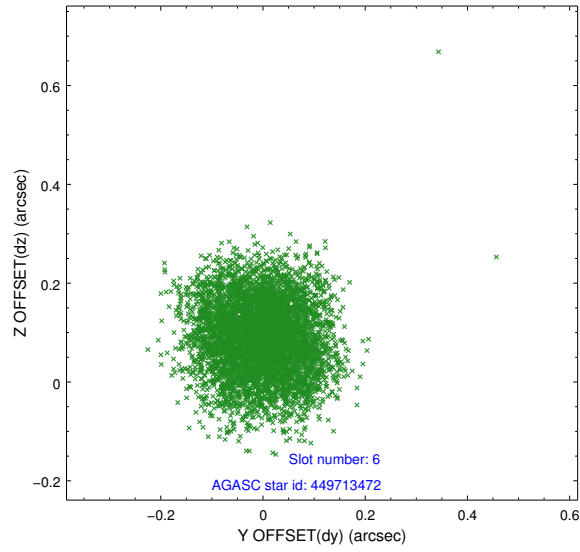
2.4.2 Slot 4



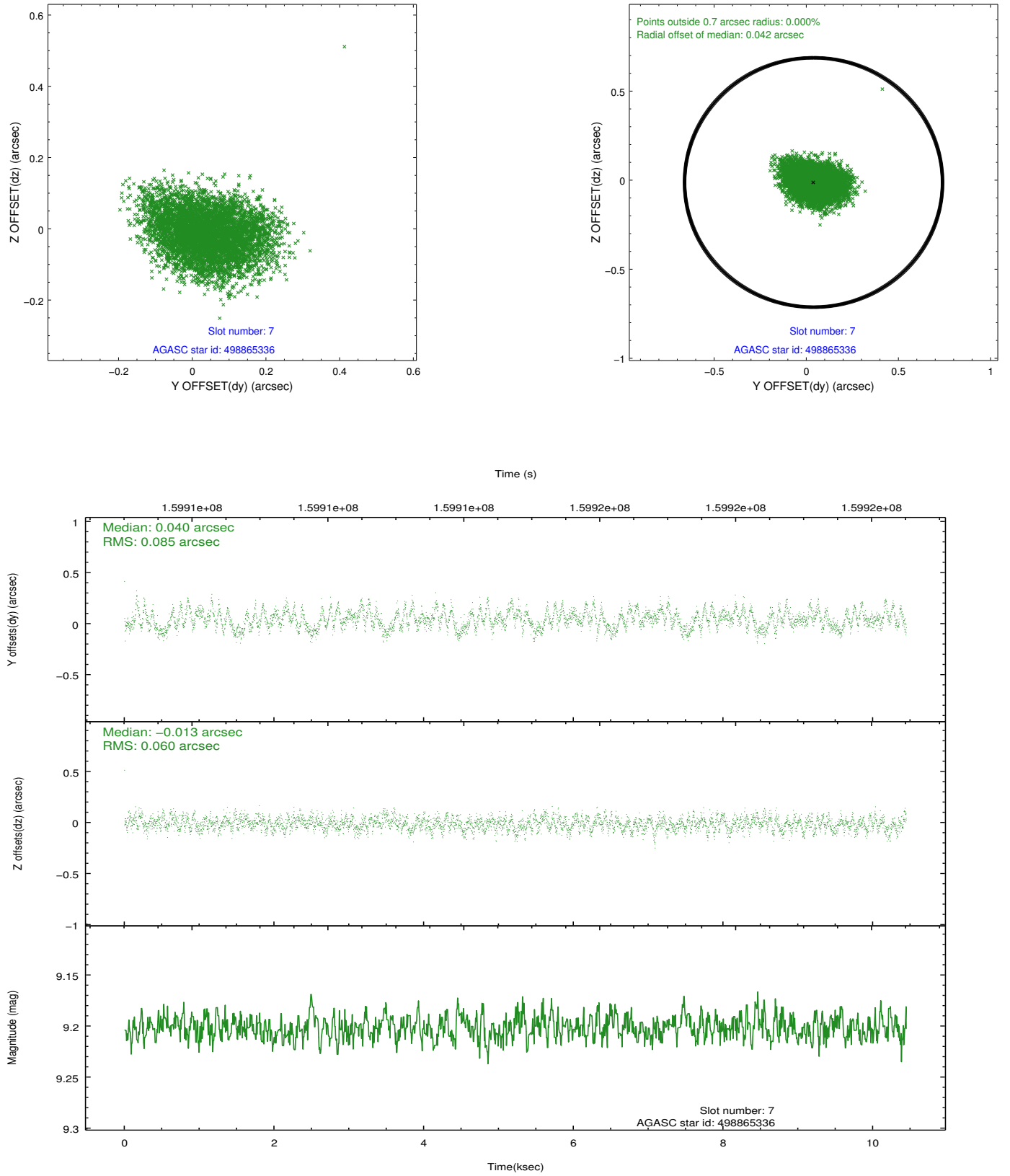
2.4.3 Slot 5



2.4.4 Slot 6

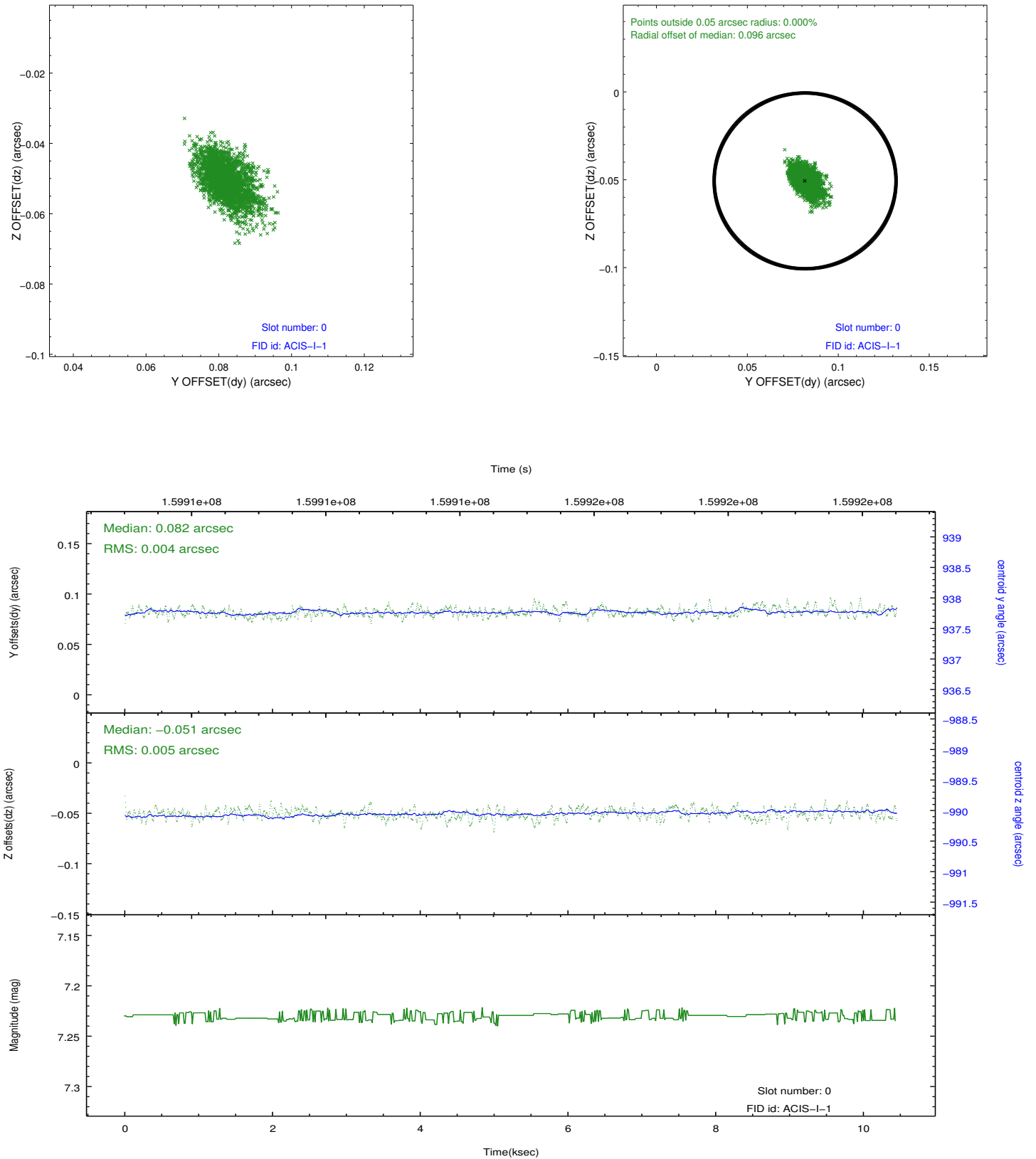


2.4.5 Slot 7

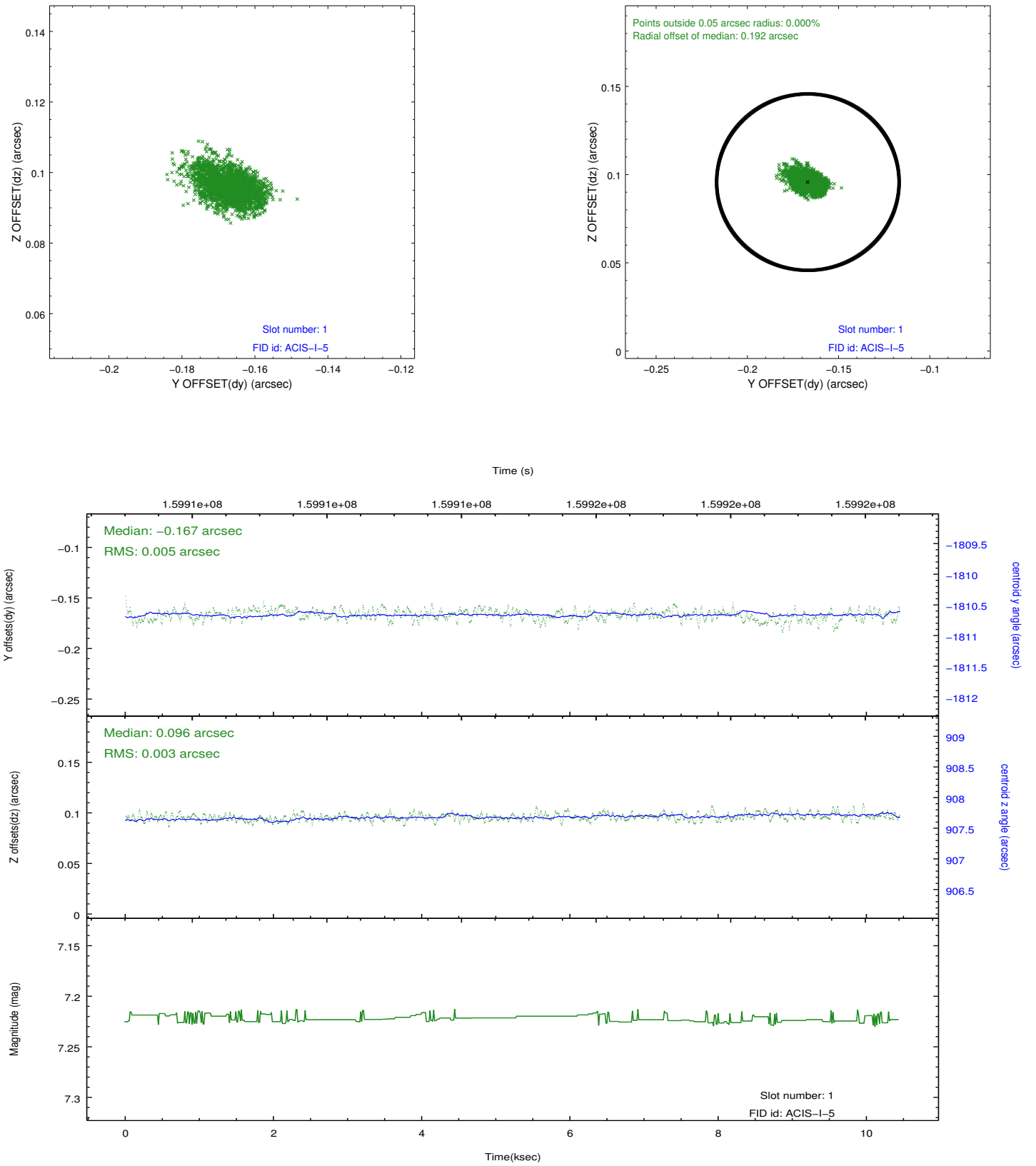


2.5 FID Slots

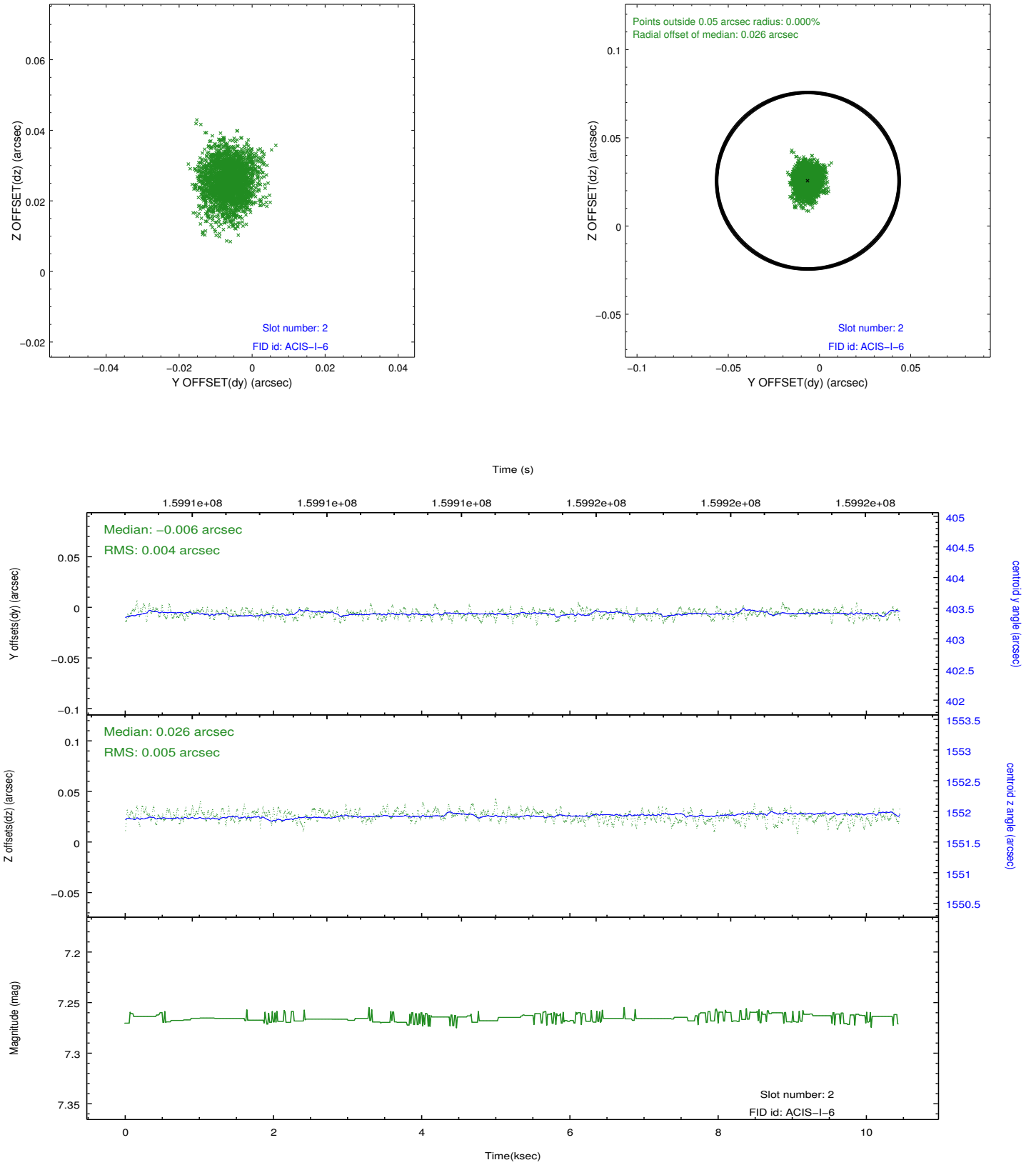
2.5.1 Slot 0



2.5.2 Slot 1



2.5.3 Slot 2



A Summary

A.1 Status

V&V Scientist	Jen Lauer
V&V Date (YYYY-MM-DD)	2012.11.01
V&V Edition	1
V&V Disposition and Status	OK
V&V Charge Time	9.523

A.2 Comments