

V&V Reference Report

L2 ASCDS Version : 8.4.5

Observation 3587 - L2 Version 3
Chandra X-Ray Center

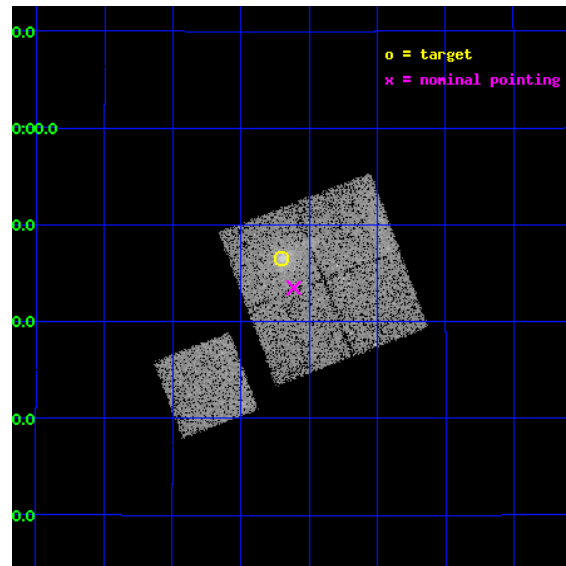
L2 Processing Date : Oct 23 2012

Contents

1	Front	2
2	OBI	3
2.1	OBI	3
2.1.1	Images	3
2.1.2	Bias	3
2.1.3	Parameters	4
2.1.4	Events	4
2.2	Compared Parameters	5
2.3	Aspect	6
2.4	Star Slots	9
2.4.1	Slot 3	9
2.4.2	Slot 4	10
2.4.3	Slot 5	11
2.4.4	Slot 6	12
2.4.5	Slot 7	13
2.5	FID Slots	14
2.5.1	Slot 0	14
2.5.2	Slot 1	15
2.5.3	Slot 2	16
A	Summary	17
A.1	Status	17
A.2	Comments	17

1 Front

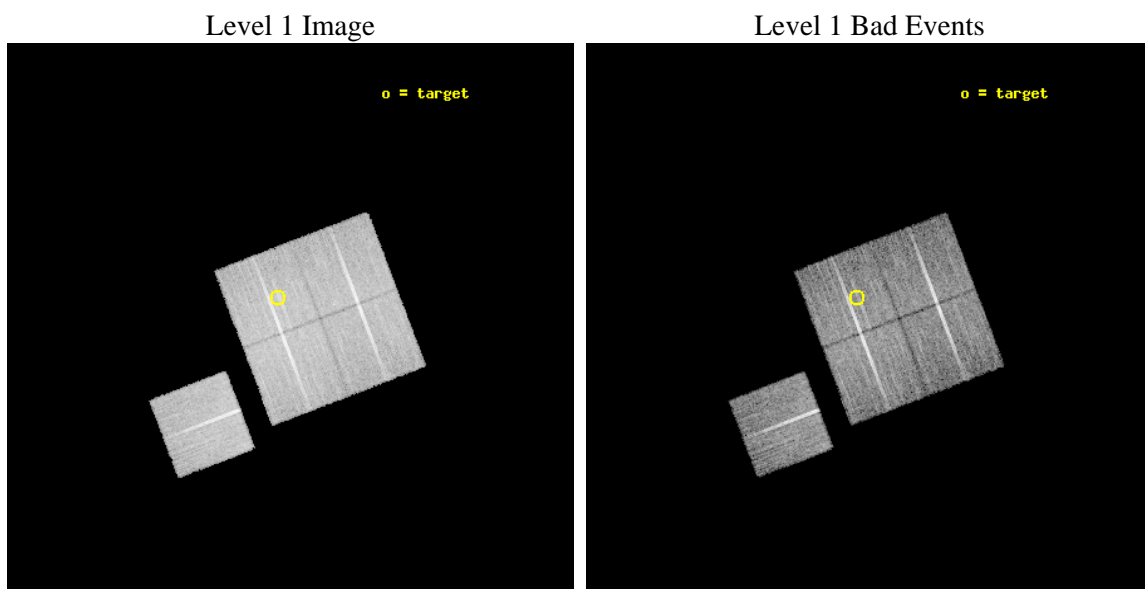
seq_num	800308	Sequence number
obs_id	3587	Observation id
title	X-RAY/SZ DETERMINATION OF COSMOLOGICAL PARAMETERS	Proposal title
observer	DR. LEON VANSPEYBROECK	Principal investigator
object	MACS-J0911.2+1746	Source name
dtcycle	0	
cycle	P	events from which exps? Prim/Second/Both
ra_targ	137.8	Observer's specified target RA [deg]
dec_targ	17.775	Observer's specified target Dec [deg]
ra_nom	137.77774418643	Nominal RA [deg]
dec_nom	17.724989900554	Nominal Dec [deg]
roll_nom	249.11864186982	Nominal Roll [deg]
revision	3	Processing version of data
ontime	18116.359004796	Sum of GTIs [s]
livetime	17879.655437328	Livetime [s]
ontime0	18119.464572012	Sum of GTIs [s]
ontime1	18116.358984917	Sum of GTIs [s]
ontime2	18116.358994901	Sum of GTIs [s]
ontime3	18116.359004796	Sum of GTIs [s]
ontime6	18119.423532009	Sum of GTIs [s]
l2events	41475	Number of level 2 events



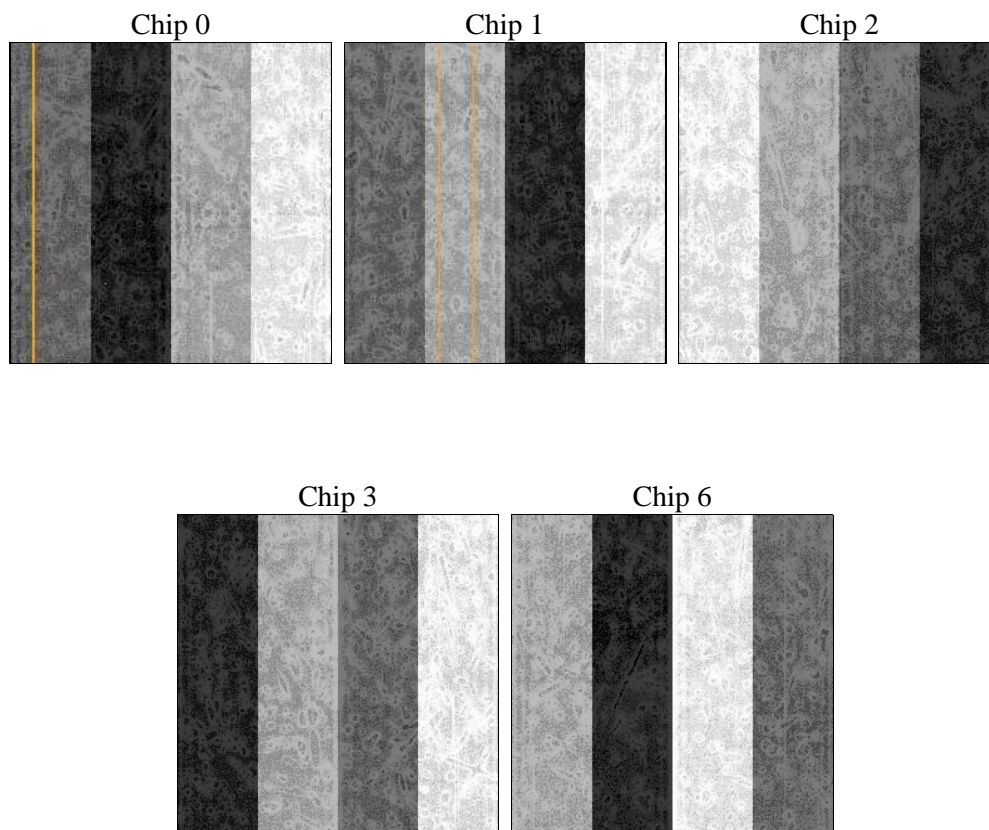
2 OBI

2.1 OBI

2.1.1 Images



2.1.2 Bias



2.1.3 Parameters

obi_num	0	Obi number	sched_exp_time	18000.000000	[s] Scheduled observation exposure time
ascdsver	8.4.5	Processing system revision	ontime	18116.359004796	Sum of GTIs [s]
caldbver	4.5.2	 	ontime0	18119.464572012	Sum of GTIs [s]
date	2012-10-23T11:23:00	Date and time of file creation	ontime1	18116.358984917	Sum of GTIs [s]
revision	3	Processing version of data	ontime2	18116.358994901	Sum of GTIs [s]
			ontime3	18116.359004796	Sum of GTIs [s]
			ontime6	18119.423532009	Sum of GTIs [s]
			l1events	470684	Number of level 1 events

2.1.4 Events

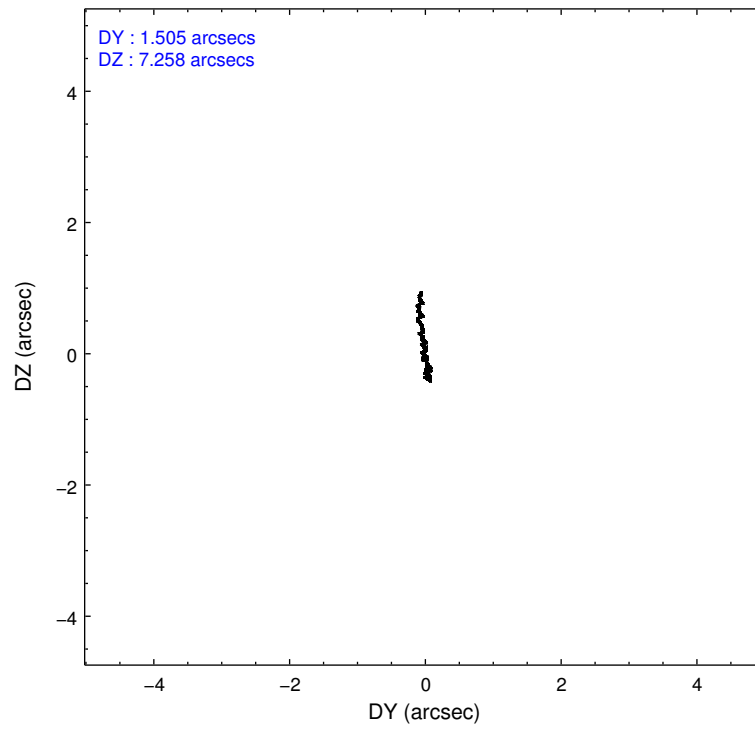
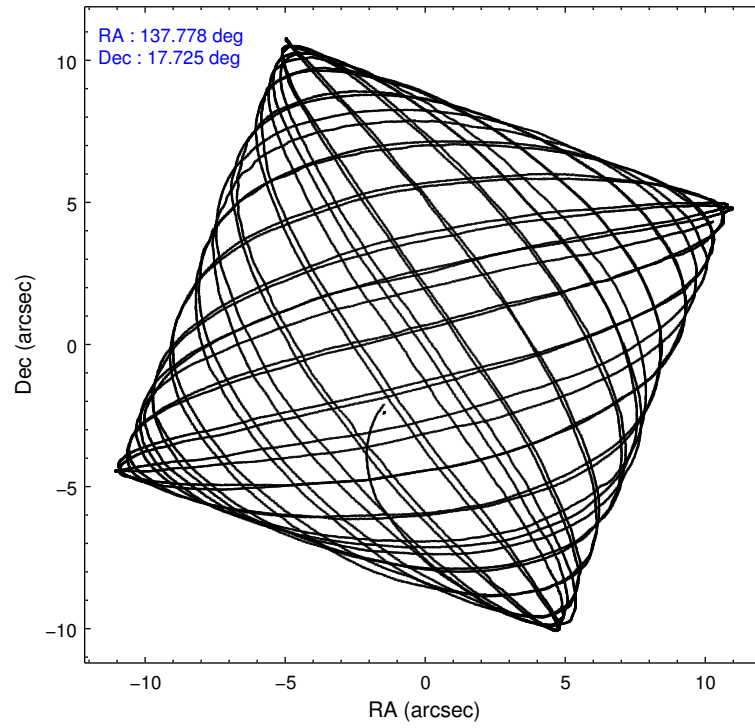
	ccd 0	ccd 1	ccd 2	ccd 3	ccd 6
level 1 events	86676	87995	100921	99380	95712
rejected events	77356	77100	91678	88332	86215
rejected %	89%	87%	90%	88%	90%

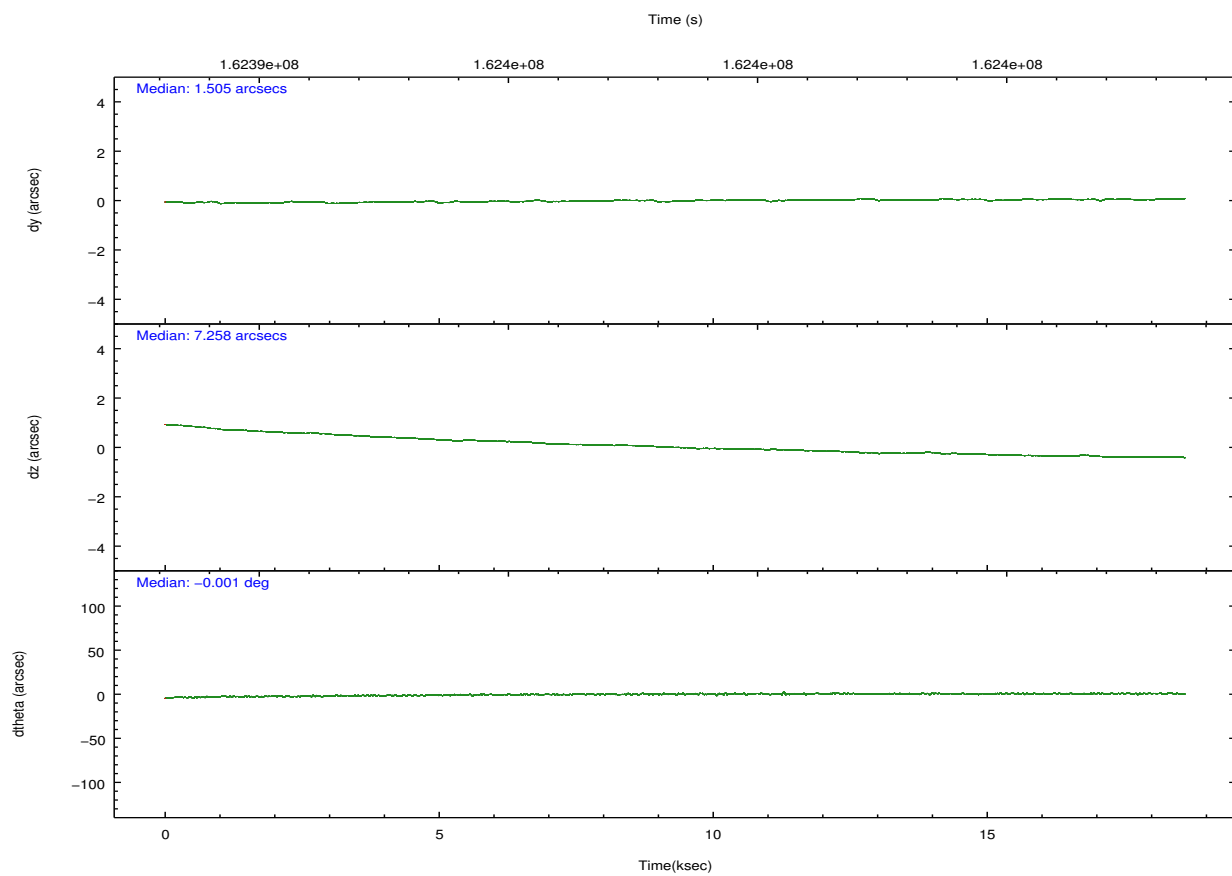
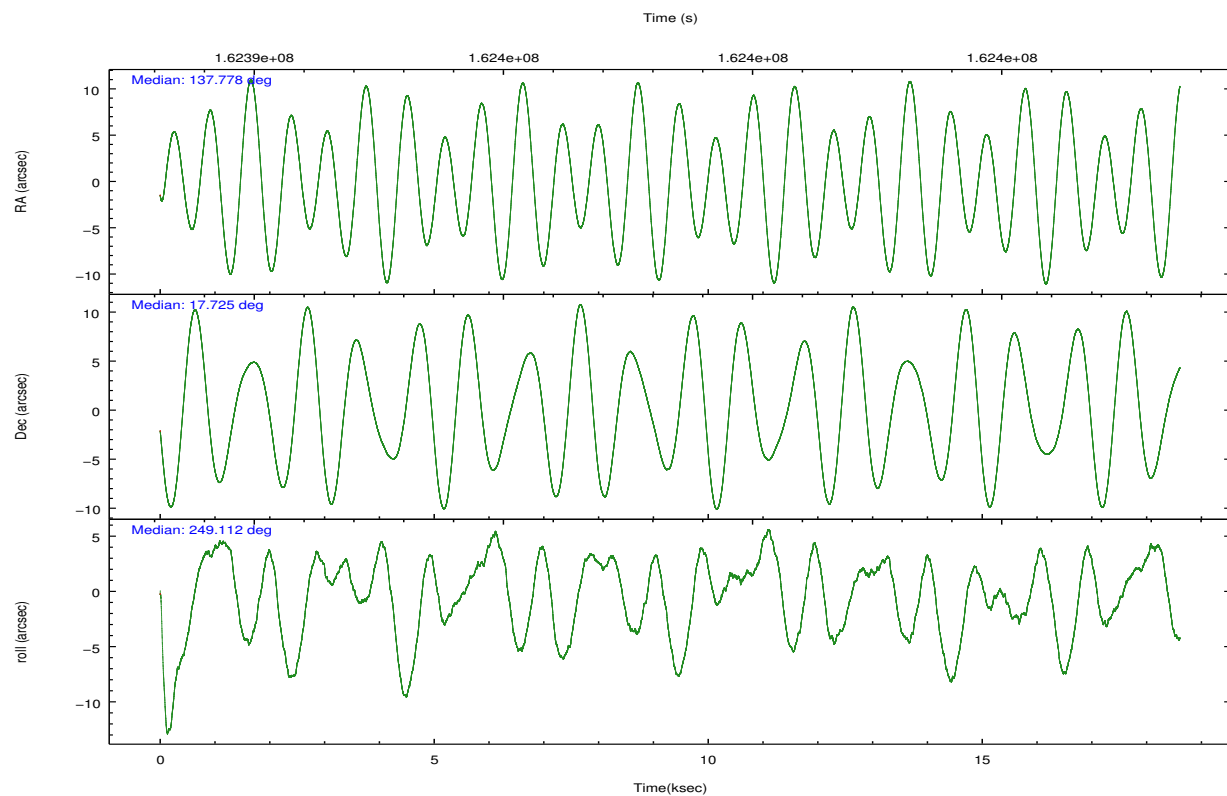
	ccd 0	ccd 1	ccd 2	ccd 3	ccd 6
grade 0 events	3231	4092	3347	4964	3189
	3%	4%	3%	4%	3%
grade 1 events	42	44	52	63	45
	0%	0%	0%	0%	0%
grade 2 events	2080	2250	2124	2139	2073
	2%	2%	2%	2%	2%
grade 3 events	1138	1208	1033	1057	1106
	1%	1%	1%	1%	1%
grade 4 events	1028	1234	1074	1097	1129
	1%	1%	1%	1%	1%
grade 5 events	3219	3531	3202	3613	3654
	3%	4%	3%	3%	3%
grade 6 events	1845	2113	1665	1795	2002
	2%	2%	1%	1%	2%
grade 7 events	74093	73523	88424	84652	82514
	85%	83%	87%	85%	86%

2.2 Compared Parameters

Parameter	Planned	Actual	Parameter	Planned	Actual
Instrument	ACIS	ACIS	Obspar format version number	7	7
Detector	ACIS-01236	ACIS-01236	Obspar file type	PREDICTED	ACTUAL
Grating	NONE	NONE	Obspar update status	NONE	UPDATED
Data mode	VFAINT	VFAINT	Number of optional ACIS chips dropped	0	0
Observation mode	POINTING	POINTING	On-chip summing requested	N	N
[deg] Pointing RA	137.773065	137.7777441864312	Subarray requested	NONE	NONE
[deg] Pointing Dec	17.752022	17.72498990055381	Alternating exposures requested	N	N
[deg] Pointing Roll	248.911373	249.1186418698184	[s] Primary exposure time	0.000000	3.1
[mm] SIM focus pos	-0.782348	-0.7809083437167272			
[mm] SIM defocus	0	0.001439871863259334			
[mm] SIM translation stage pos	-225.840463	-225.8433433320239			
[mm] SIM translation stage offset	-7.752	-7.749109670905796			
[s] Observation start time (MET)	162389648.184000	162388480.49855			
Observation start date	2003-02-23T12:13:04	2003-02-23T11:54:40			
[s] Observation end time (MET)	162407648.184000	162408709.8994			
Observation end date	2003-02-23T17:13:04	2003-02-23T17:31:49			
Read mode	TIMED	TIMED			

2.3 Aspect



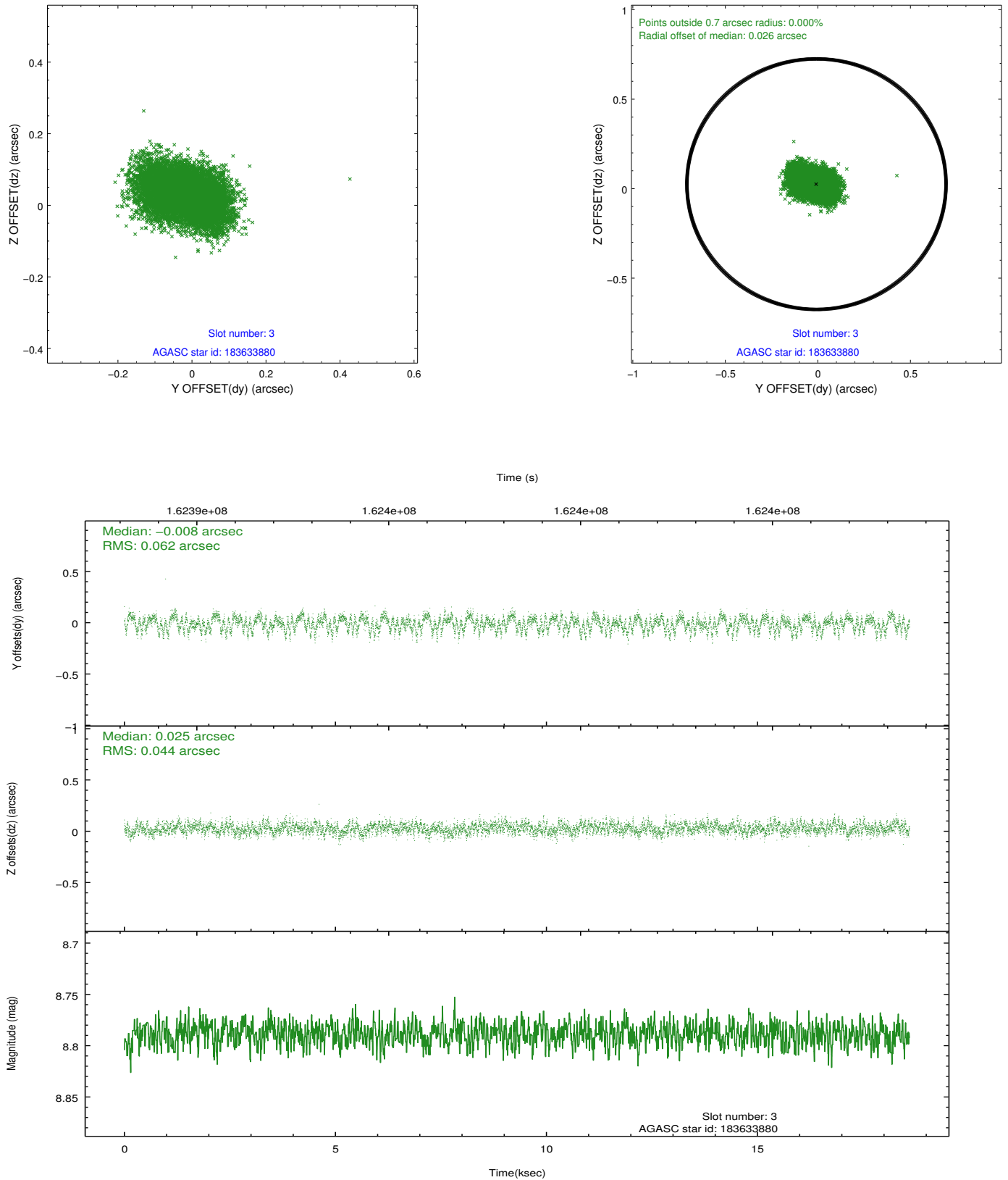


Slot Statistics

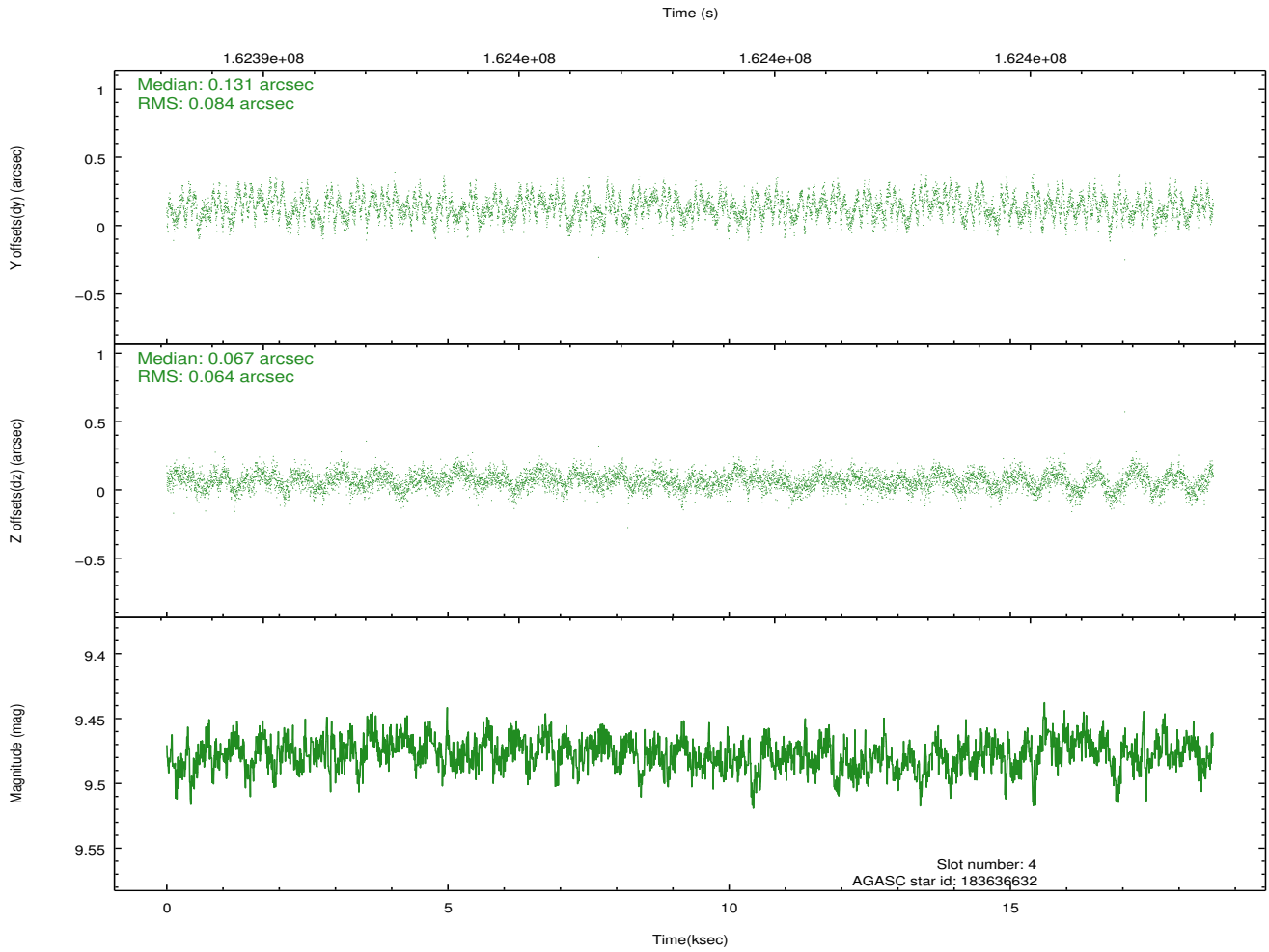
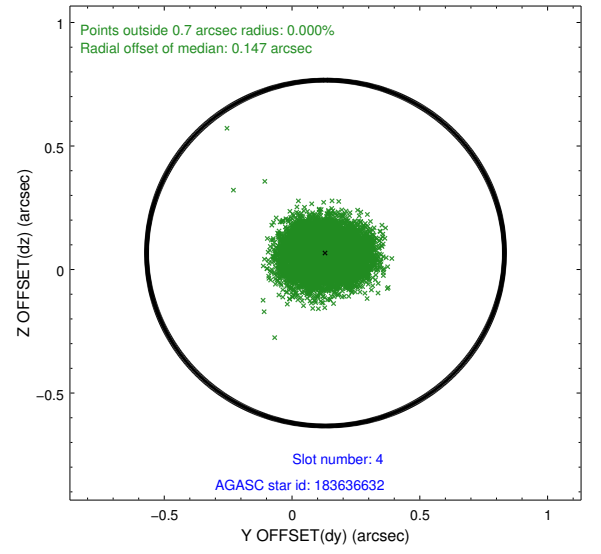
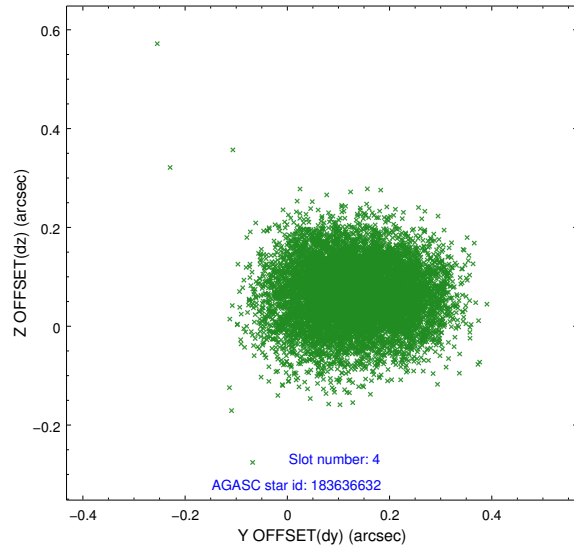
slot	status	id	mag	n_pts	med_dy	med_dz	dr1	dr2	ra	dec	mean_y	mean_z
0	FID	ACIS-I-1	7.24	4539	0.077	-0.037	0.015	0.032	0.000000	0.000000	938.26	-989.87
1	FID	ACIS-I-5	7.22	4539	-0.166	0.094	0.009	0.020	0.000000	0.000000	-1809.95	907.64
2	FID	ACIS-I-6	7.26	4539	-0.002	0.014	0.011	0.020	0.000000	0.000000	403.53	1552.29
3	GUIDE	183633880	8.79	9075	-0.008	0.025	0.081	0.133	138.226741	17.476605	363.02	1809.93
4	GUIDE	183636632	9.48	9071	0.131	0.067	0.114	0.178	138.222453	17.249521	1130.32	2092.31
5	GUIDE	184025248	8.94	9074	-0.050	-0.027	0.068	0.110	137.224522	17.677140	926.58	-1658.99
6	GUIDE	184039496	7.31	9078	-0.097	-0.104	0.066	0.108	137.987126	18.044113	-1244.92	304.72
7	GUIDE	183635568	8.60	9075	0.026	0.039	0.081	0.129	137.226478	17.234255	2413.20	-1083.55

2.4 Star Slots

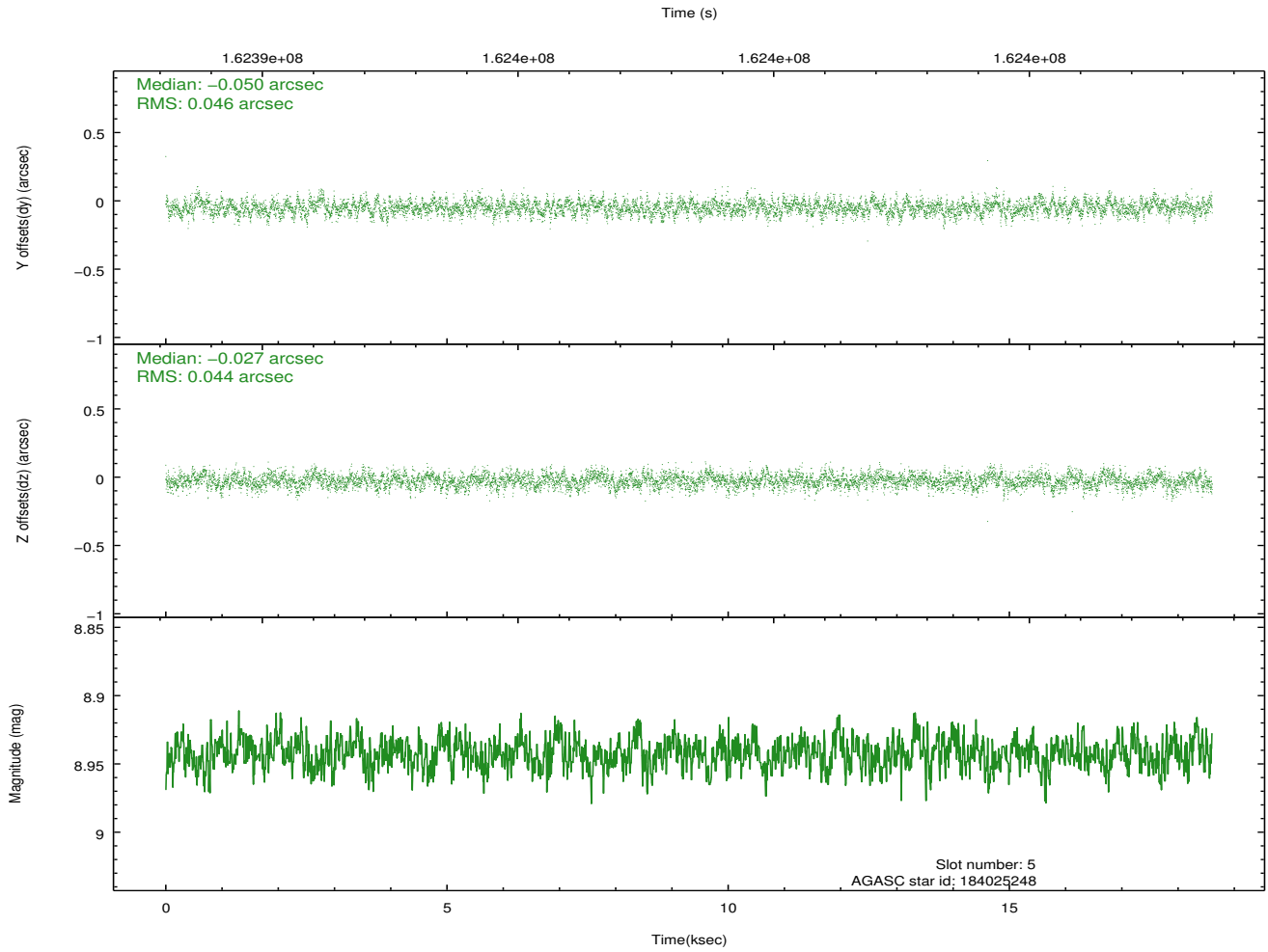
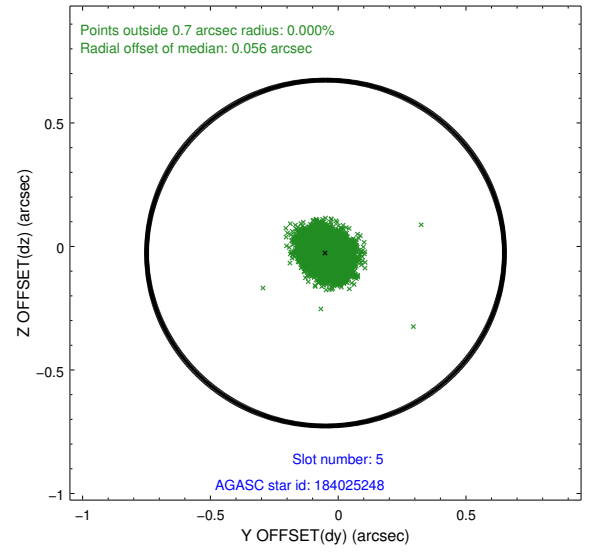
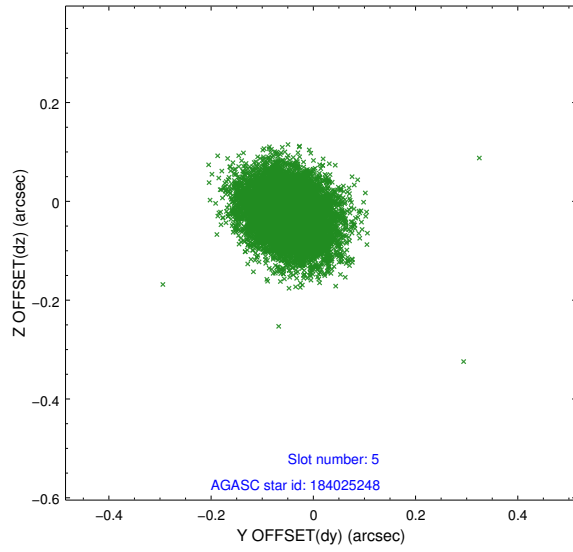
2.4.1 Slot 3



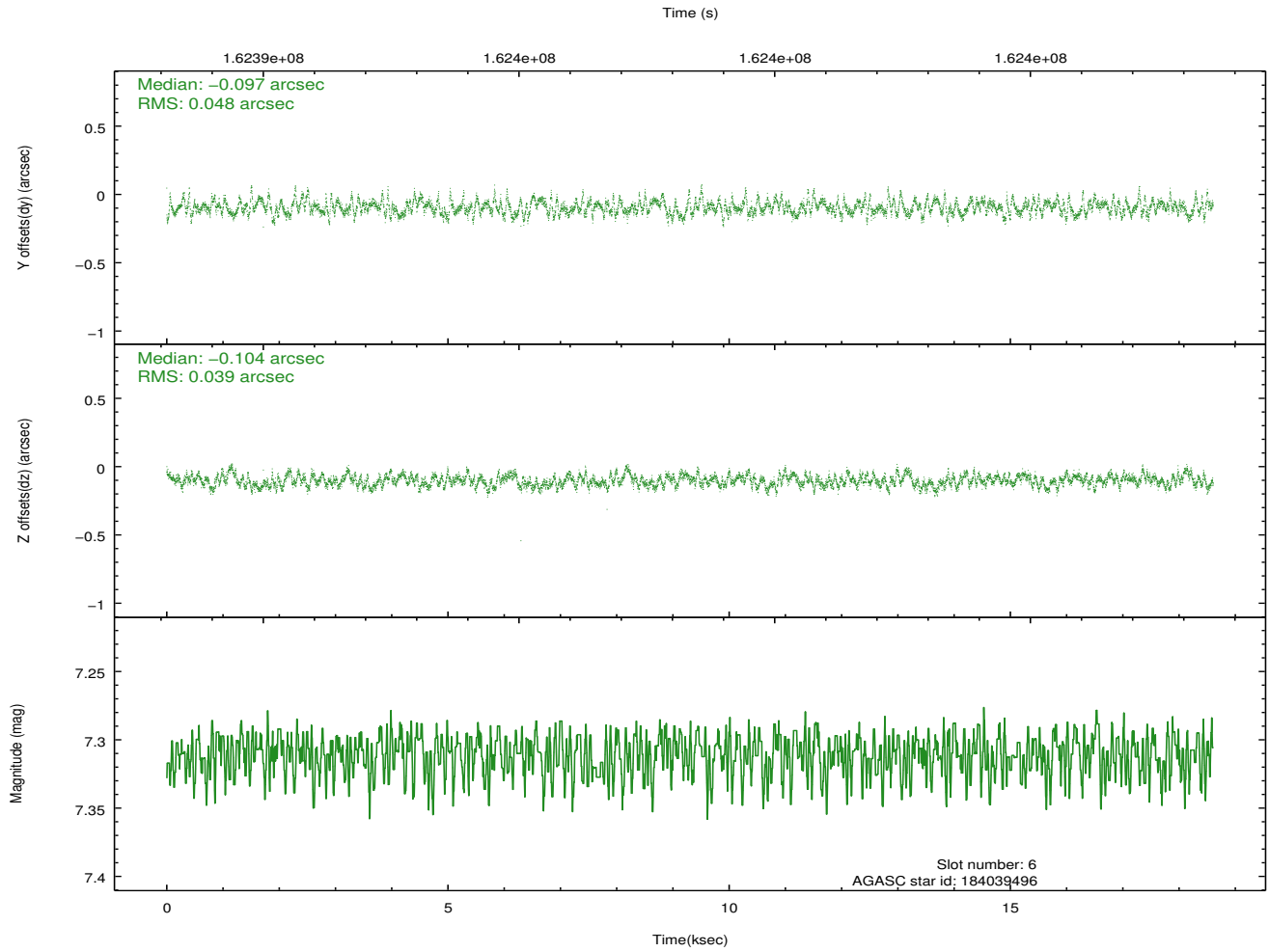
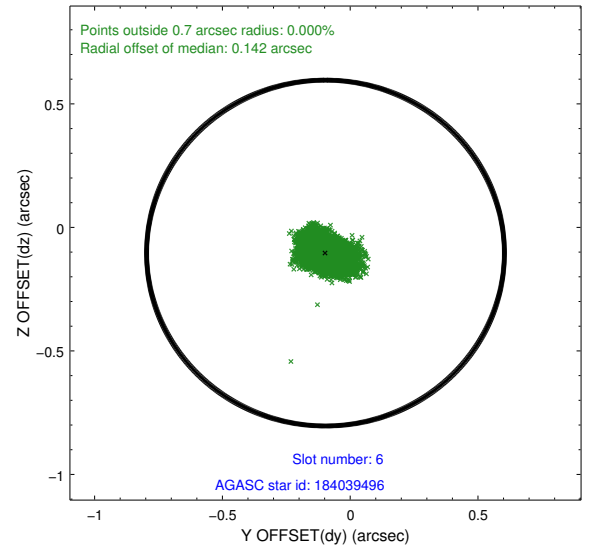
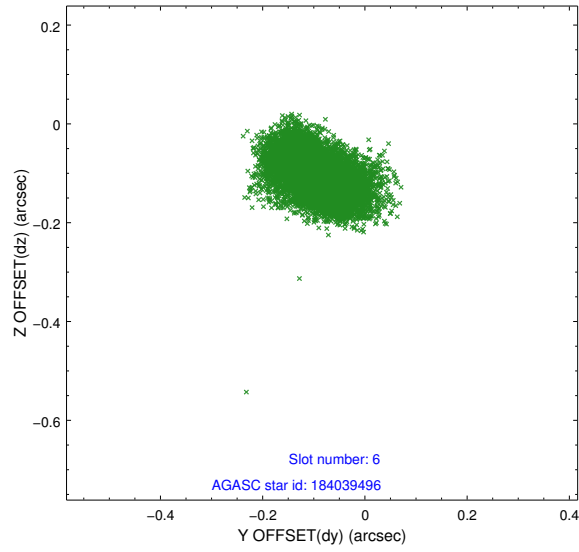
2.4.2 Slot 4



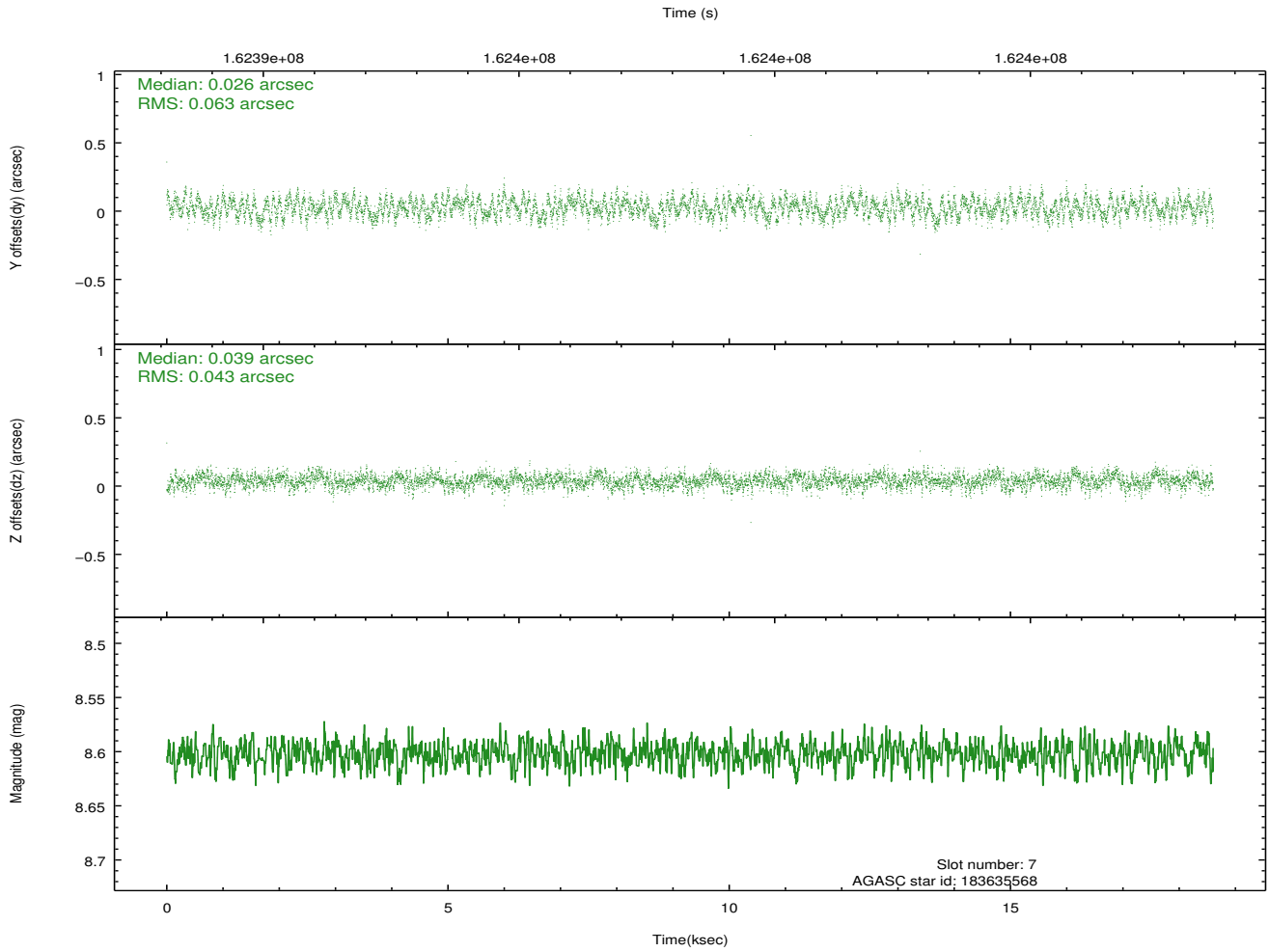
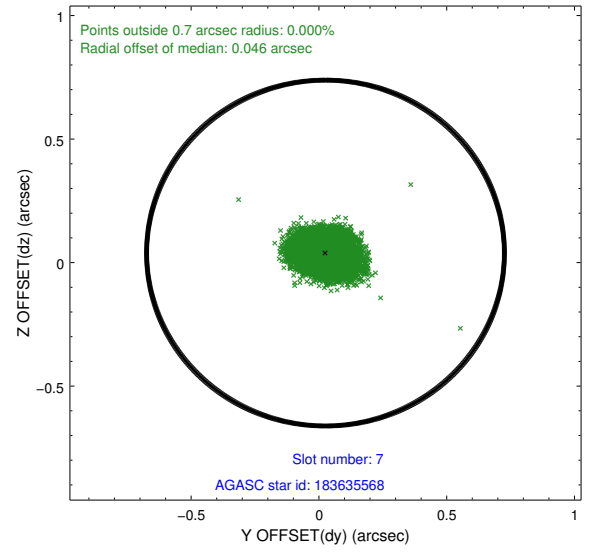
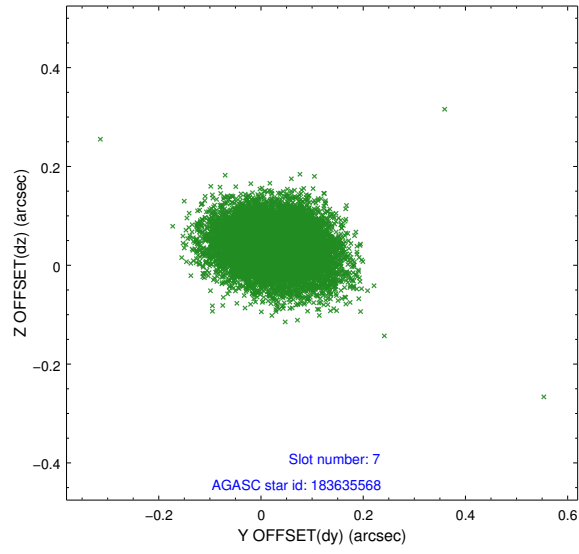
2.4.3 Slot 5



2.4.4 Slot 6

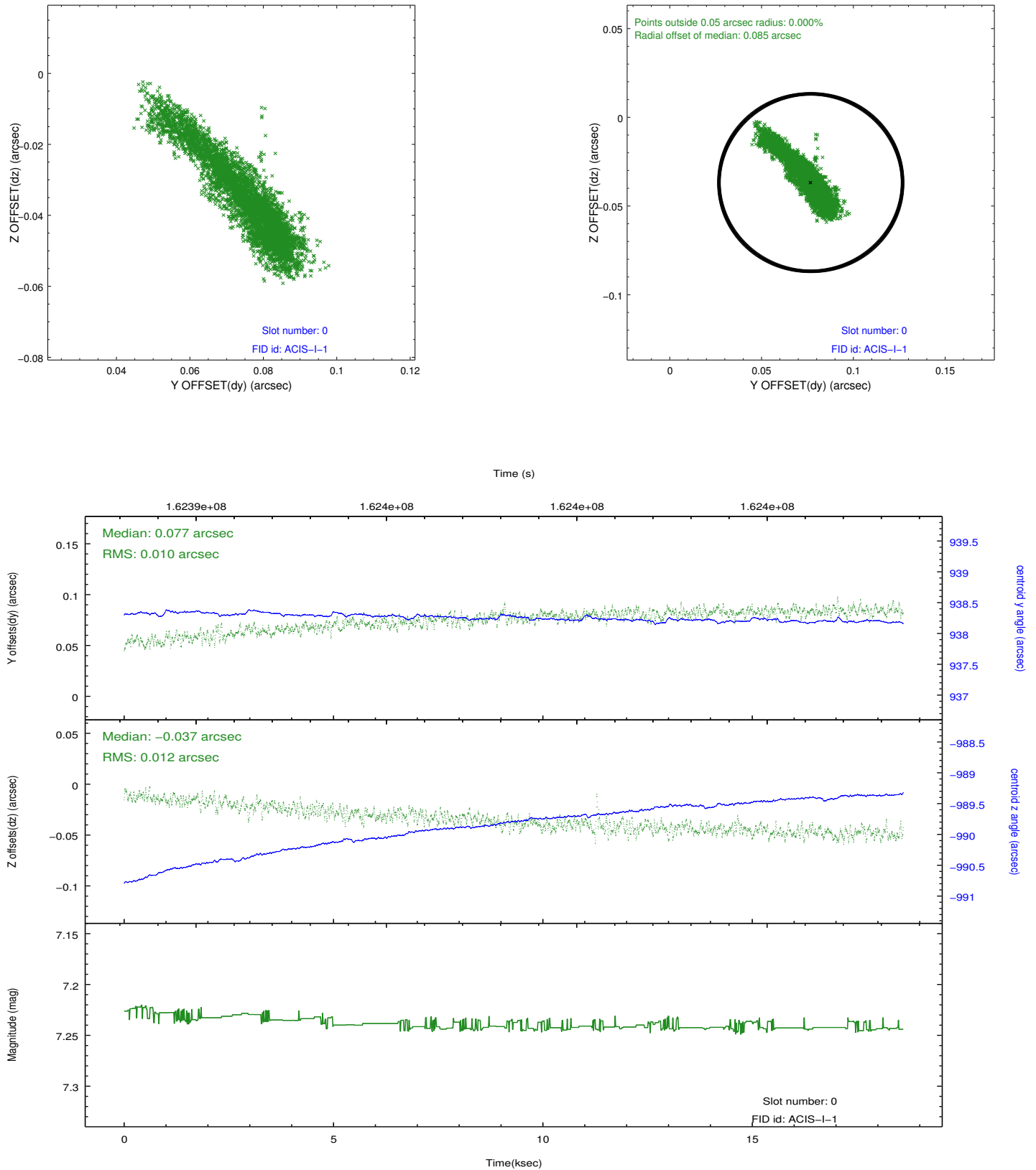


2.4.5 Slot 7

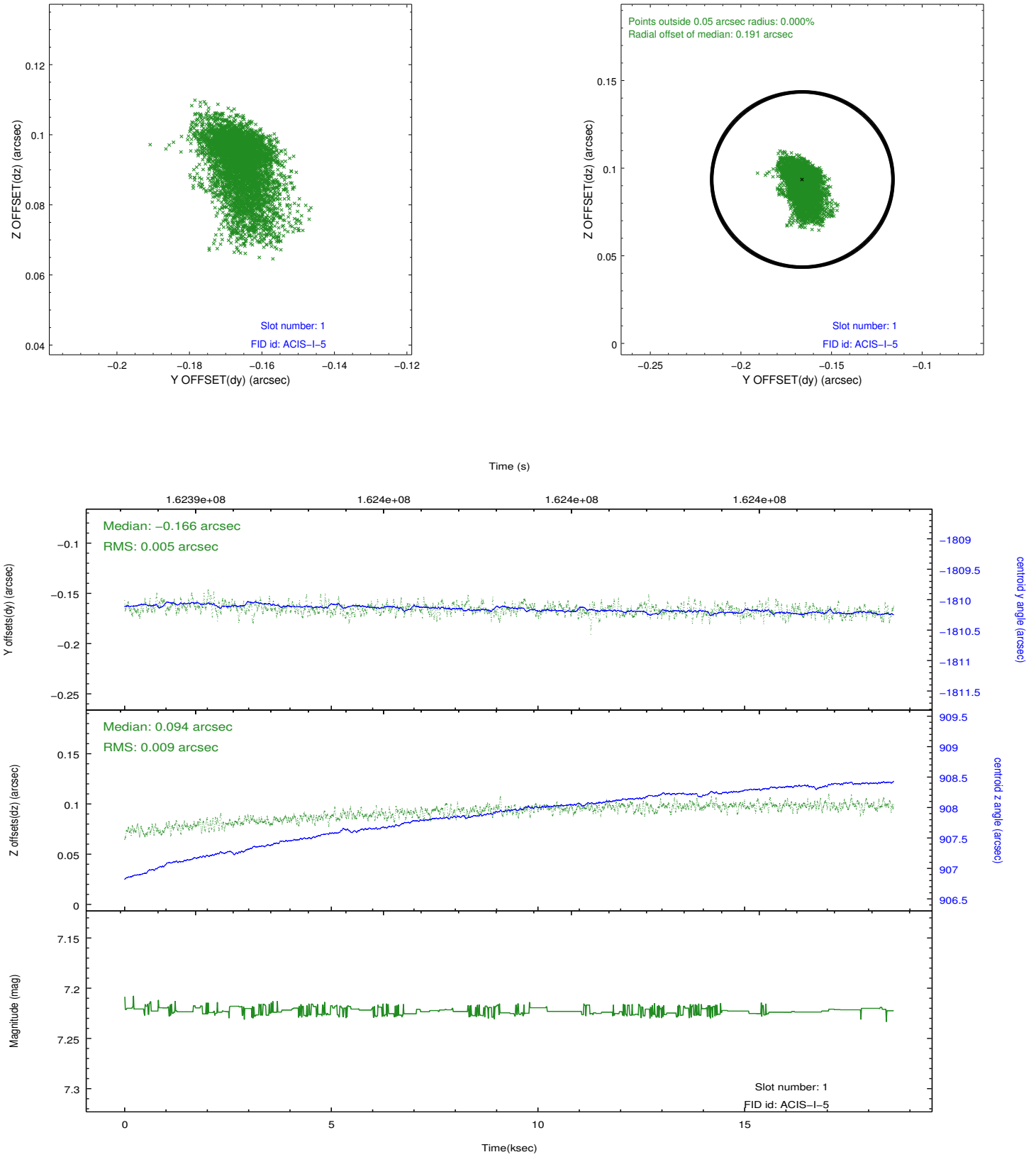


2.5 FID Slots

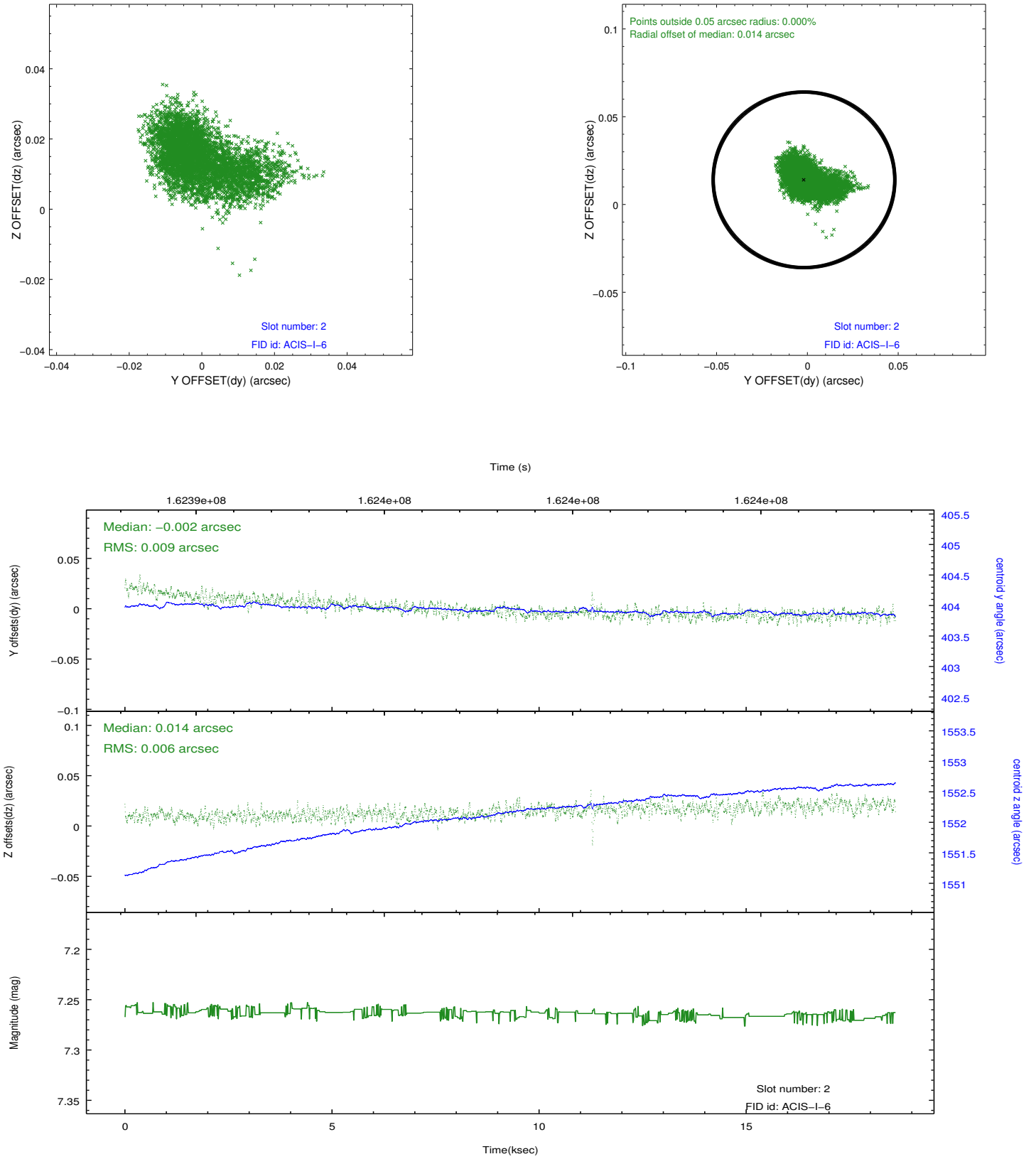
2.5.1 Slot 0



2.5.2 Slot 1



2.5.3 Slot 2



A Summary

A.1 Status

V&V Scientist	Jen Lauer
V&V Date (YYYY-MM-DD)	2012.11.07
V&V Edition	1
V&V Disposition and Status	OK
V&V Charge Time	18.119

A.2 Comments