

V&V Reference Report

L2 ASCDS Version : 8.4.5

Observation 3582 - L2 Version 4
Chandra X-Ray Center

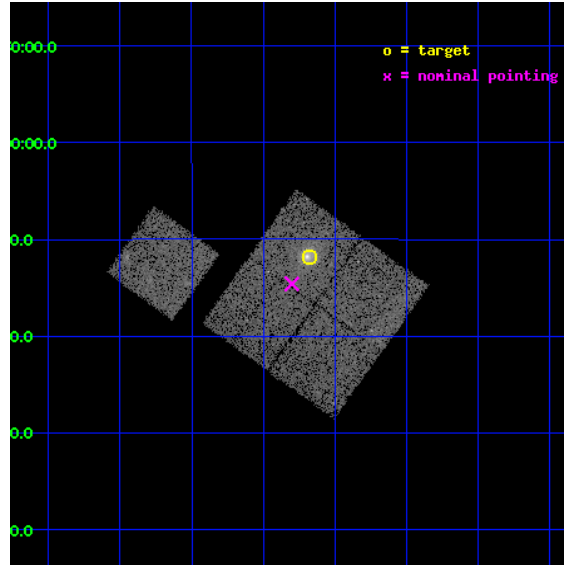
L2 Processing Date : Nov 13 2012

Contents

1	Front	2
2	OBI	3
2.1	OBI	3
2.1.1	Images	3
2.1.2	Bias	3
2.1.3	Parameters	4
2.1.4	Events	4
2.2	Compared Parameters	5
2.3	Aspect	6
2.4	Star Slots	9
2.4.1	Slot 3	9
2.4.2	Slot 4	10
2.4.3	Slot 5	11
2.4.4	Slot 6	12
2.4.5	Slot 7	13
2.5	FID Slots	14
2.5.1	Slot 0	14
2.5.2	Slot 1	15
2.5.3	Slot 2	16
A	Summary	17
A.1	Status	17
A.2	Comments	17

1 Front

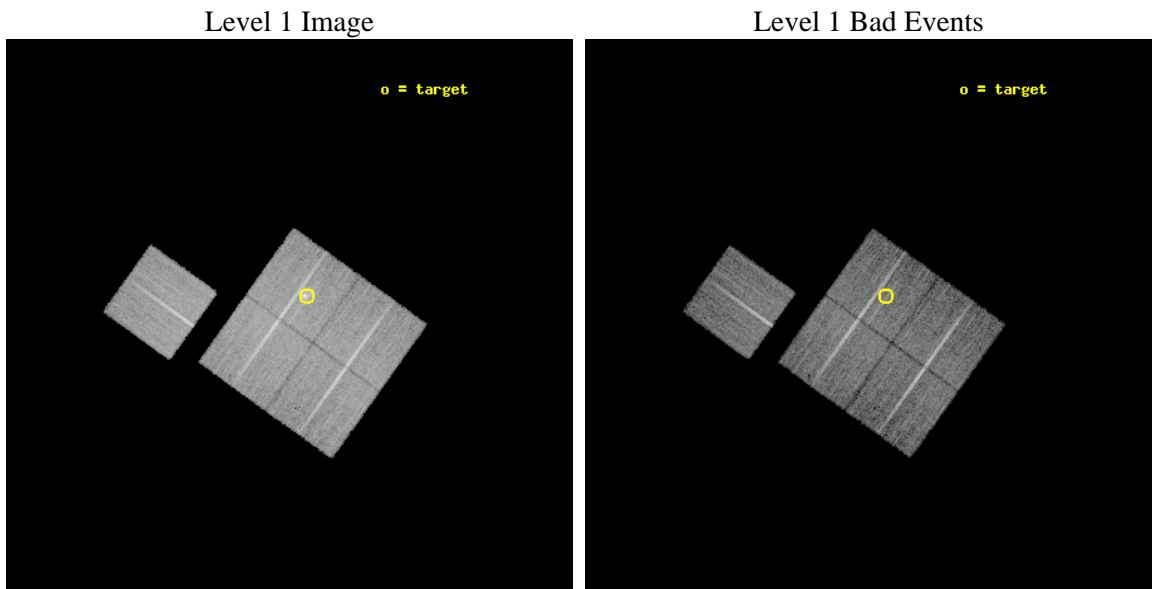
seq_num	800303	Sequence number
obs_id	3582	Observation id
title	X-RAY/SZ DETERMINATION OF COSMOLOGICAL PARAMETERS	Proposal title
observer	DR. LEON VANSPEYBROECK	Principal investigator
object	MACS-J0329.6-0211	Source name
dtcycle	0	
cycle	P	events from which exps? Prim/Second/Both
ra_targ	52.42	Observer's specified target RA [deg]
dec_targ	-2.198	Observer's specified target Dec [deg]
ra_nom	52.450028046842	Nominal RA [deg]
dec_nom	-2.243286860417	Nominal Dec [deg]
roll_nom	305.63138762887	Nominal Roll [deg]
revision	4	Processing version of data
ontime	20112.677000761	Sum of GTIs [s]
livetime	19849.890069009	Livetime [s]
ontime0	20109.536020488	Sum of GTIs [s]
ontime1	20115.818030745	Sum of GTIs [s]
ontime2	20115.818030745	Sum of GTIs [s]
ontime3	20112.677000761	Sum of GTIs [s]
ontime6	20115.818030804	Sum of GTIs [s]
l2events	47710	Number of level 2 events



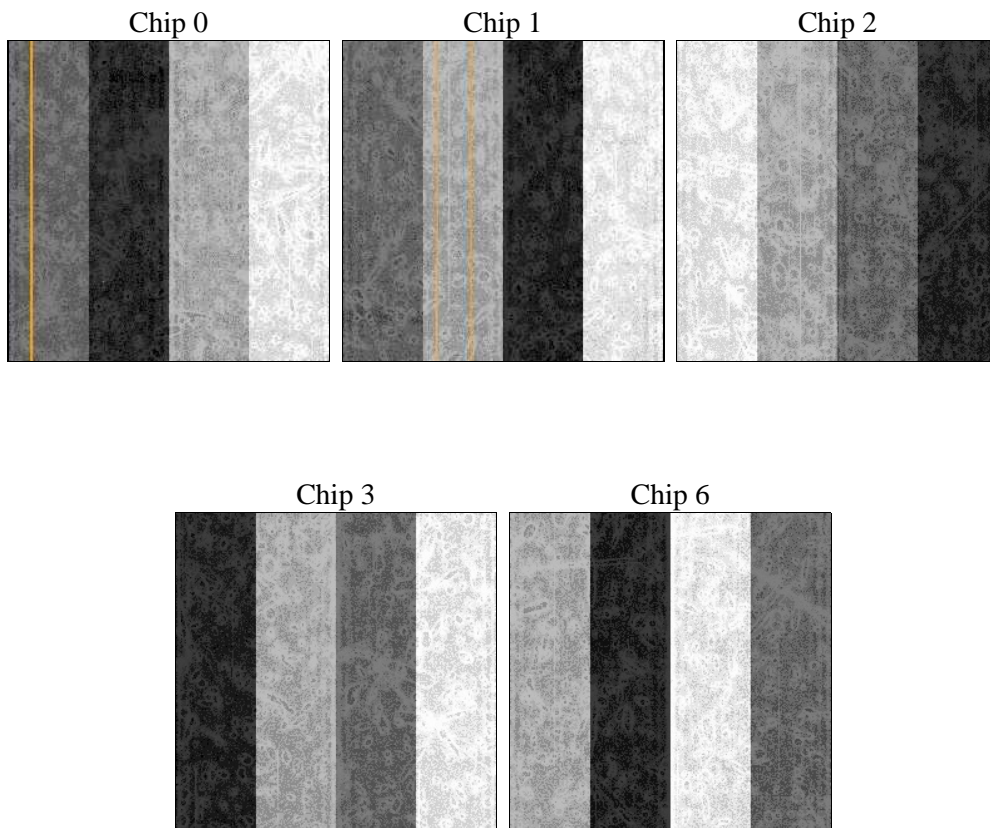
2 OBI

2.1 OBI

2.1.1 Images



2.1.2 Bias



2.1.3 Parameters

obi_num	0	Obi number	sched_exp_time	20000.000000	[s] Scheduled observation exposure time
ascdsver	8.4.5	Processing system revision	ontime	20112.677000761	Sum of GTIs [s]
caldsver	4.5.2	 	ontime0	20109.536020488	Sum of GTIs [s]
date	2012-11-14T00:17:46	Date and time of file creation	ontime1	20115.818030745	Sum of GTIs [s]
revision	4	Processing version of data	ontime2	20115.818030745	Sum of GTIs [s]
			ontime3	20112.677000761	Sum of GTIs [s]
			ontime6	20115.818030804	Sum of GTIs [s]
			l1events	494224	Number of level 1 events

2.1.4 Events

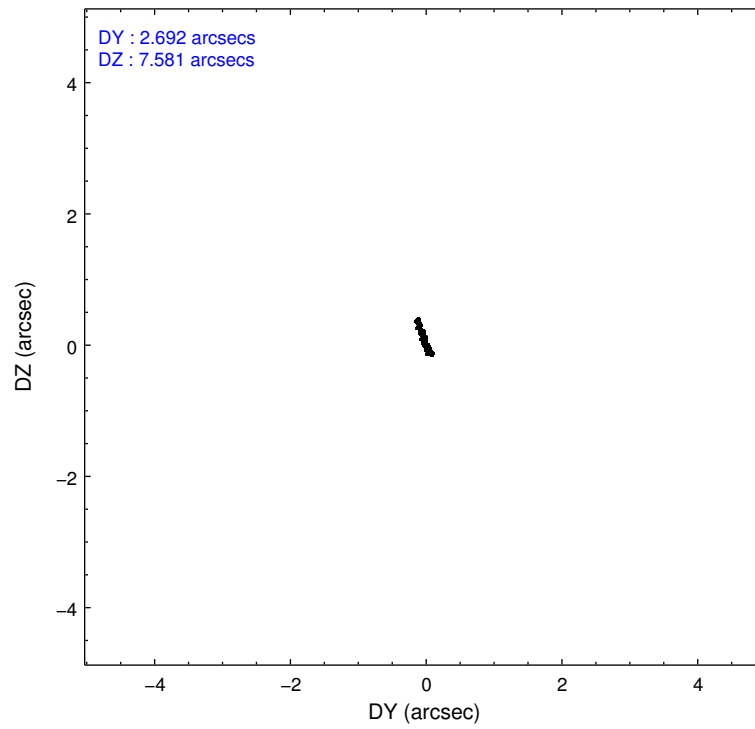
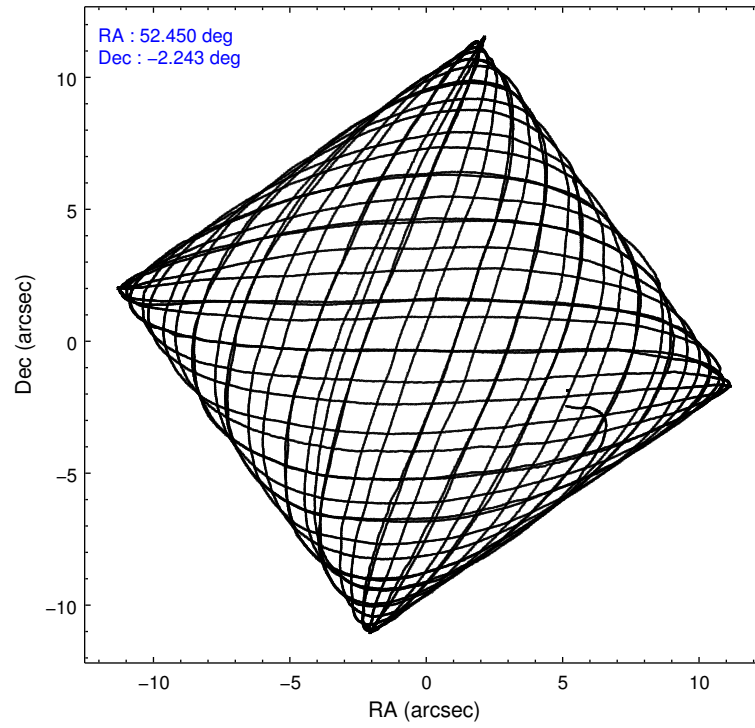
	ccd 0	ccd 1	ccd 2	ccd 3	ccd 6
level 1 events	90529	92964	106997	102694	101040
rejected events	80813	81680	96793	87555	90661
rejected %	89%	87%	90%	85%	89%

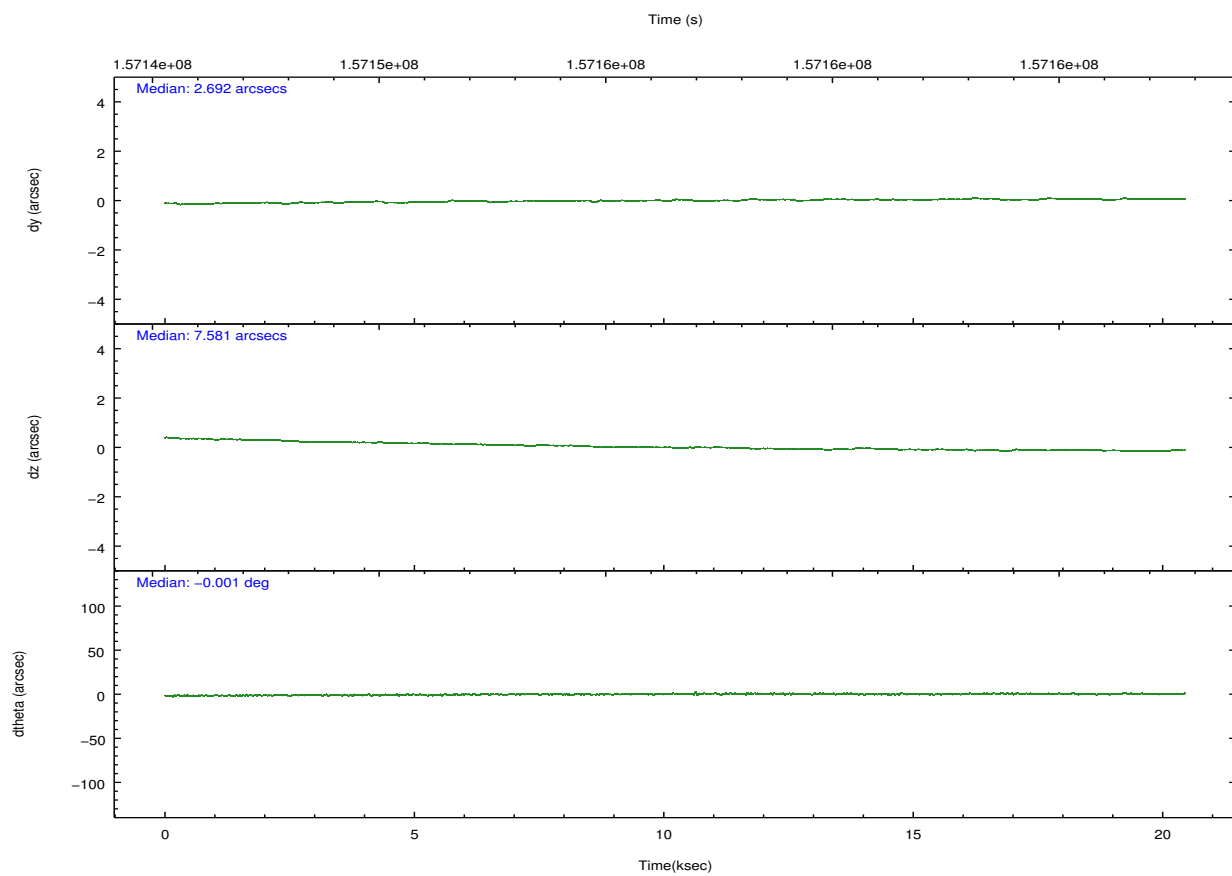
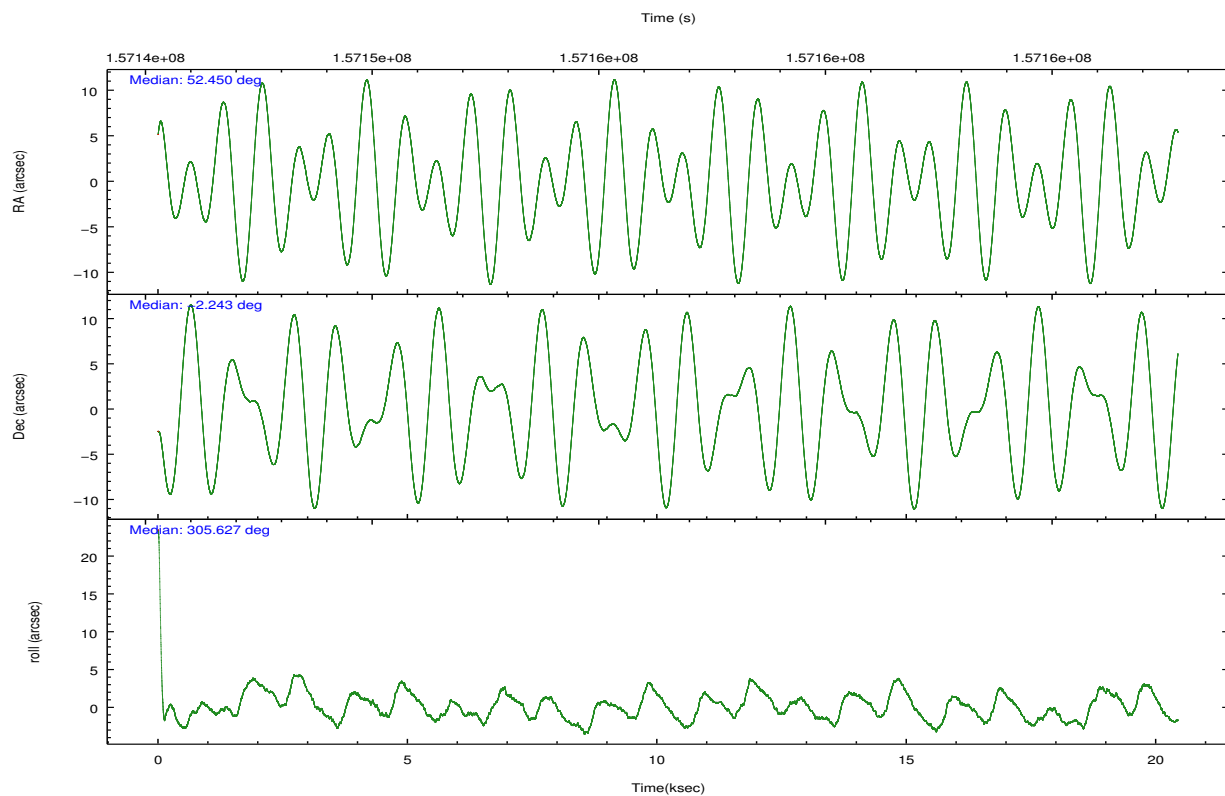
	ccd 0	ccd 1	ccd 2	ccd 3	ccd 6
grade 0 events	3472	4260	3852	8217	3731
	3%	4%	3%	8%	3%
grade 1 events	42	35	41	50	44
	0%	0%	0%	0%	0%
grade 2 events	2176	2297	2365	2515	2158
	2%	2%	2%	2%	2%
grade 3 events	1120	1237	1074	1309	1238
	1%	1%	1%	1%	1%
grade 4 events	1045	1248	1095	1219	1151
	1%	1%	1%	1%	1%
grade 5 events	3401	3531	3220	3753	3876
	3%	3%	3%	3%	3%
grade 6 events	1914	2243	1821	1886	2102
	2%	2%	1%	1%	2%
grade 7 events	77359	78113	93529	83745	86740
	85%	84%	87%	81%	85%

2.2 Compared Parameters

Parameter	Planned	Actual	Parameter	Planned	Actual
Instrument	ACIS	ACIS	Obspar format version number	7	7
Detector	ACIS-01236	ACIS-01236	Obspar file type	PREDICTED	ACTUAL
Grating	NONE	NONE	Obspar update status	NONE	UPDATED
Data mode	VFAINT	VFAINT	Number of optional ACIS chips dropped	0	0
Observation mode	POINTING	POINTING	On-chip summing requested	N	N
[deg] Pointing RA	52.425019	52.45002804684207	Subarray requested	NONE	NONE
[deg] Pointing Dec	-2.232069	-2.243286860417014	Alternating exposures requested	N	N
[deg] Pointing Roll	305.421709	305.631387628866	[s] Primary exposure time	0.000000	3.1
[mm] SIM focus pos	-0.782348	-0.7809083437167272			
[mm] SIM defocus	0	0.001439871863259334			
[mm] SIM translation stage pos	-225.840463	-225.8433433320239			
[mm] SIM translation stage offset	-7.752	-7.749109670905796			
[s] Observation start time (MET)	157146751.184000	157145663.70385			
Observation start date	2002-12-24T19:51:27	2002-12-24T19:34:23			
[s] Observation end time (MET)	157166751.184000	157167033.41724			
Observation end date	2002-12-25T01:24:47	2002-12-25T01:30:33			
Read mode	TIMED	TIMED			

2.3 Aspect



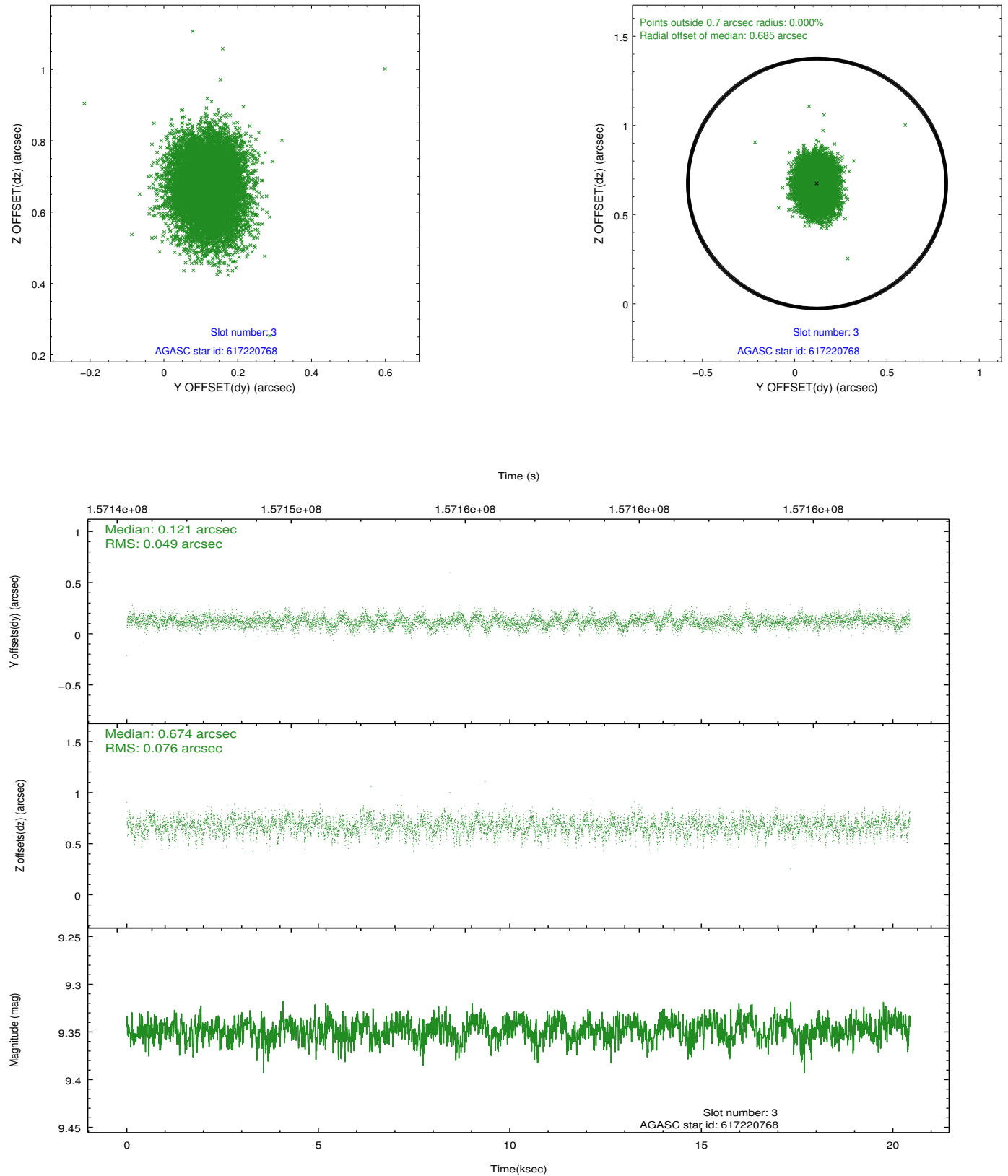


Slot Statistics

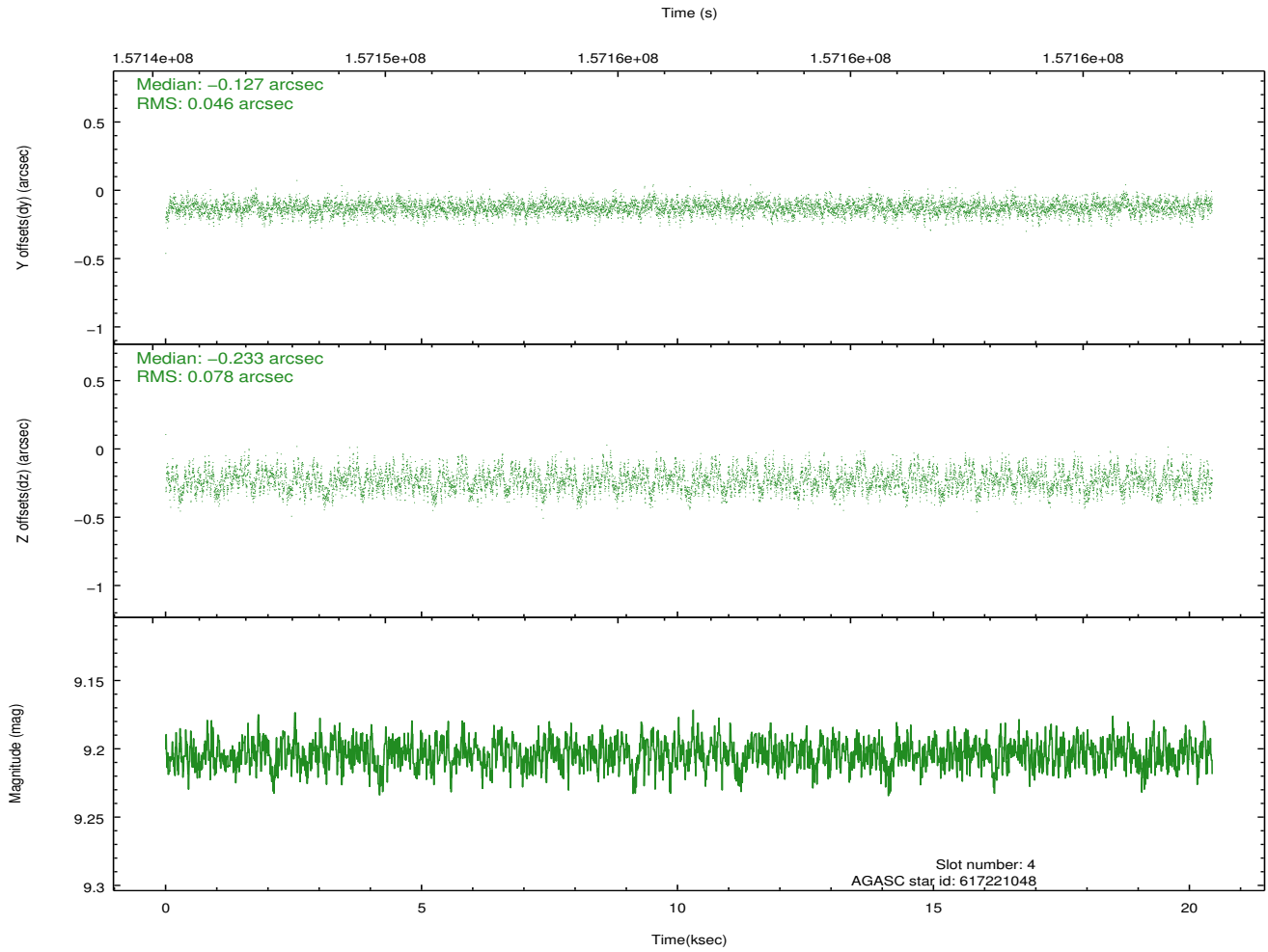
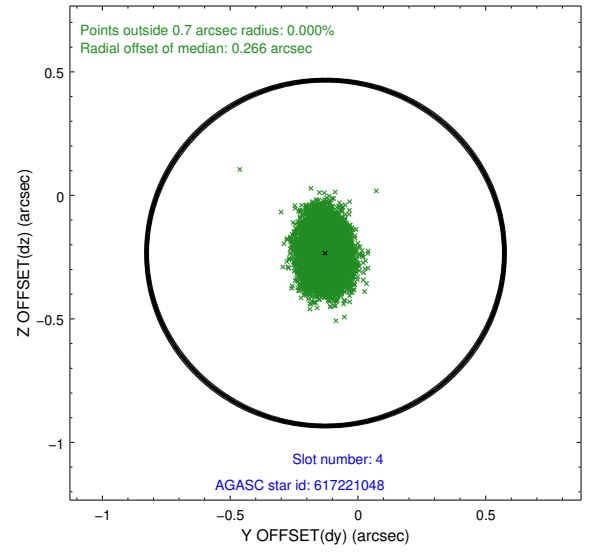
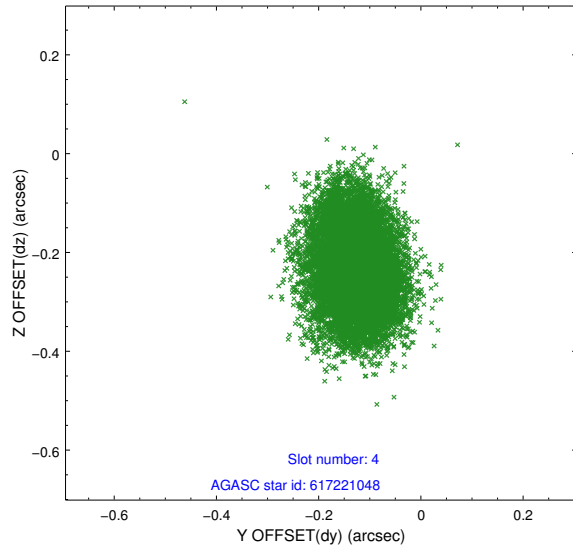
slot	status	id	mag	n_pts	med_dy	med_dz	dr1	dr2	ra	dec	mean_y	mean_z
0	FID	ACIS-I-1	7.23	4984	0.063	-0.034	0.009	0.017	0.000000	0.000000	937.02	-990.16
1	FID	ACIS-I-5	7.22	4983	-0.137	0.086	0.007	0.012	0.000000	0.000000	-1811.16	907.36
2	FID	ACIS-I-6	7.26	4983	-0.017	0.019	0.008	0.013	0.000000	0.000000	402.32	1551.98
3	GUIDE	617220768	9.35	9964	0.121	0.674	0.095	0.157	52.153820	-2.297712	-372.49	-931.30
4	GUIDE	617221048	9.20	9967	-0.127	-0.233	0.096	0.155	51.583510	-2.142748	-2015.81	-2281.85
5	GUIDE	618135616	9.41	9963	0.024	-0.088	0.088	0.145	52.691139	-1.780604	-769.55	1721.81
6	GUIDE	618137256	7.10	9968	-0.152	-0.166	0.081	0.113	52.673789	-1.938766	-341.87	1341.46
7	GUIDE	618140936	8.67	9962	0.131	-0.190	0.065	0.105	52.745470	-2.469122	1363.74	444.72

2.4 Star Slots

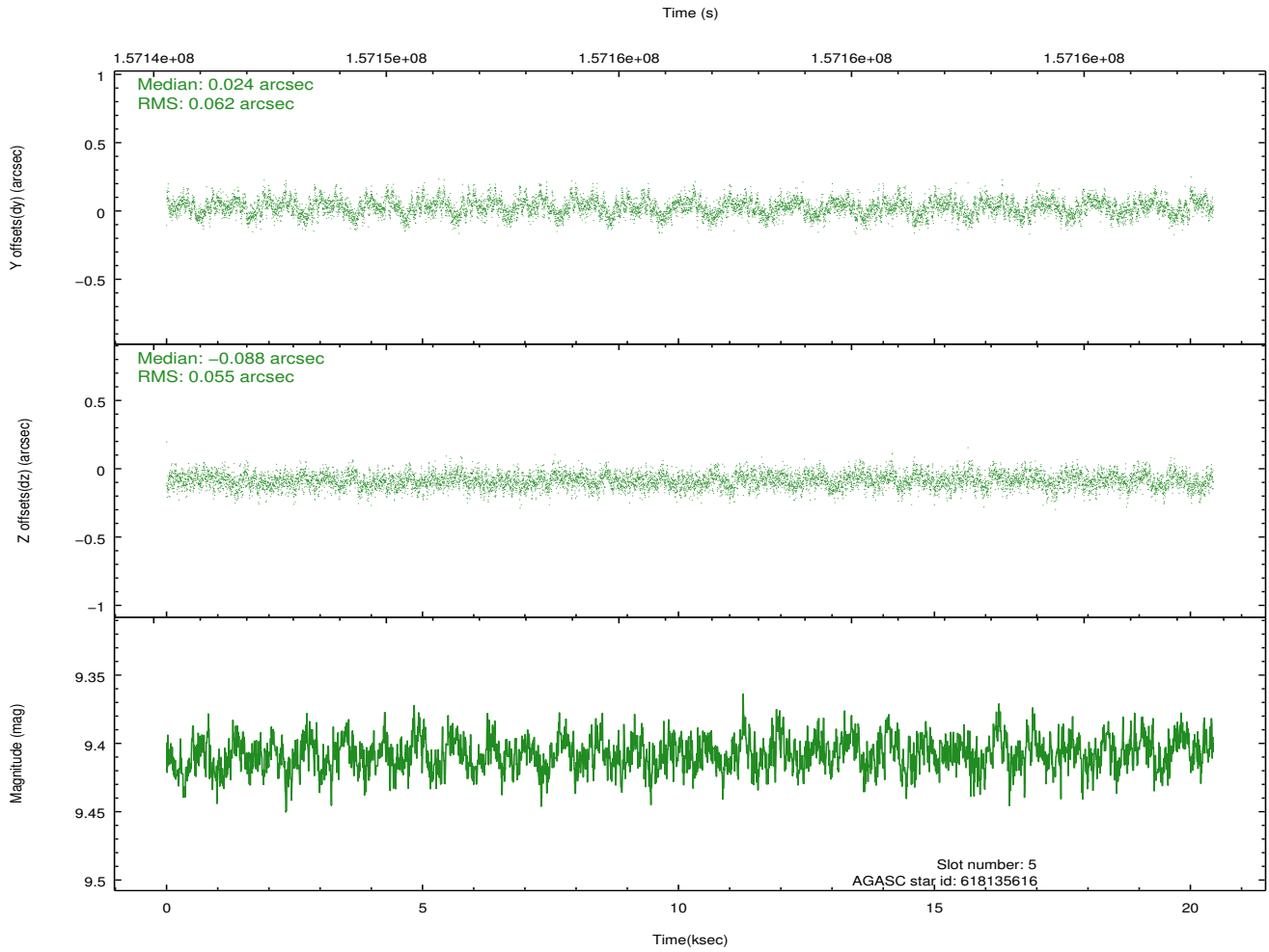
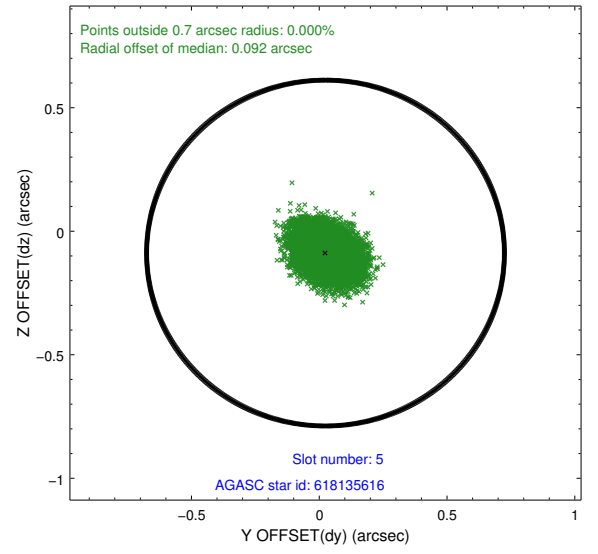
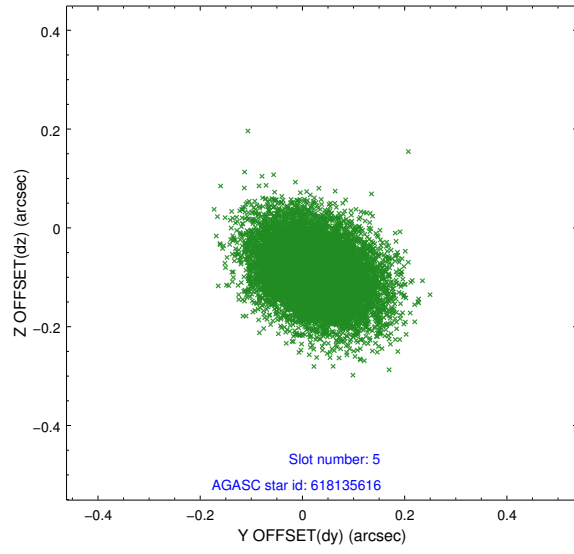
2.4.1 Slot 3



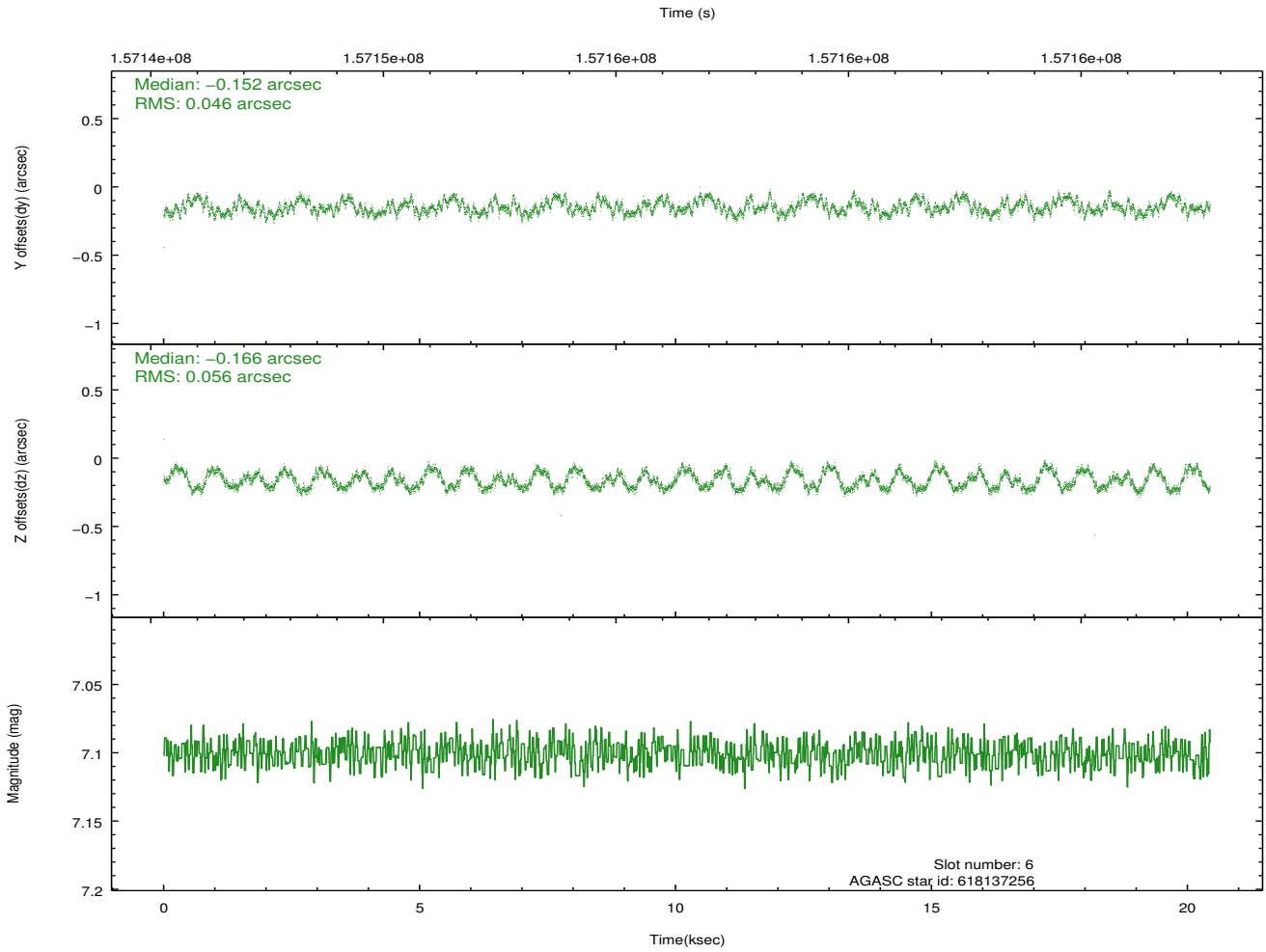
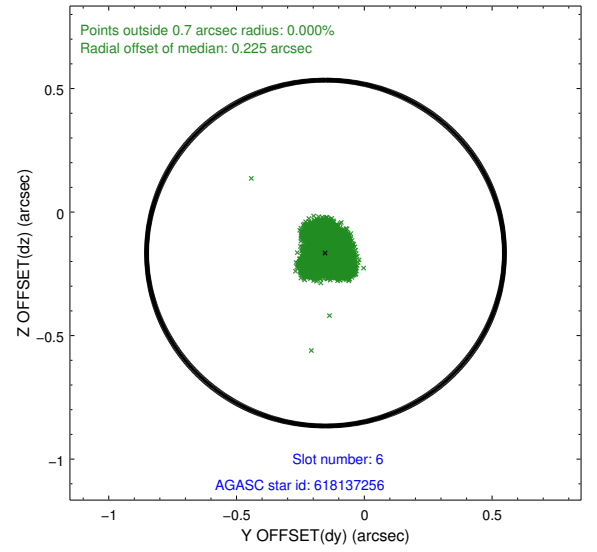
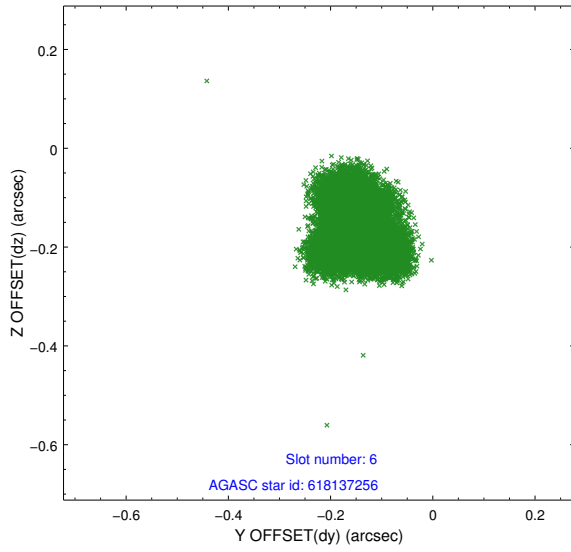
2.4.2 Slot 4



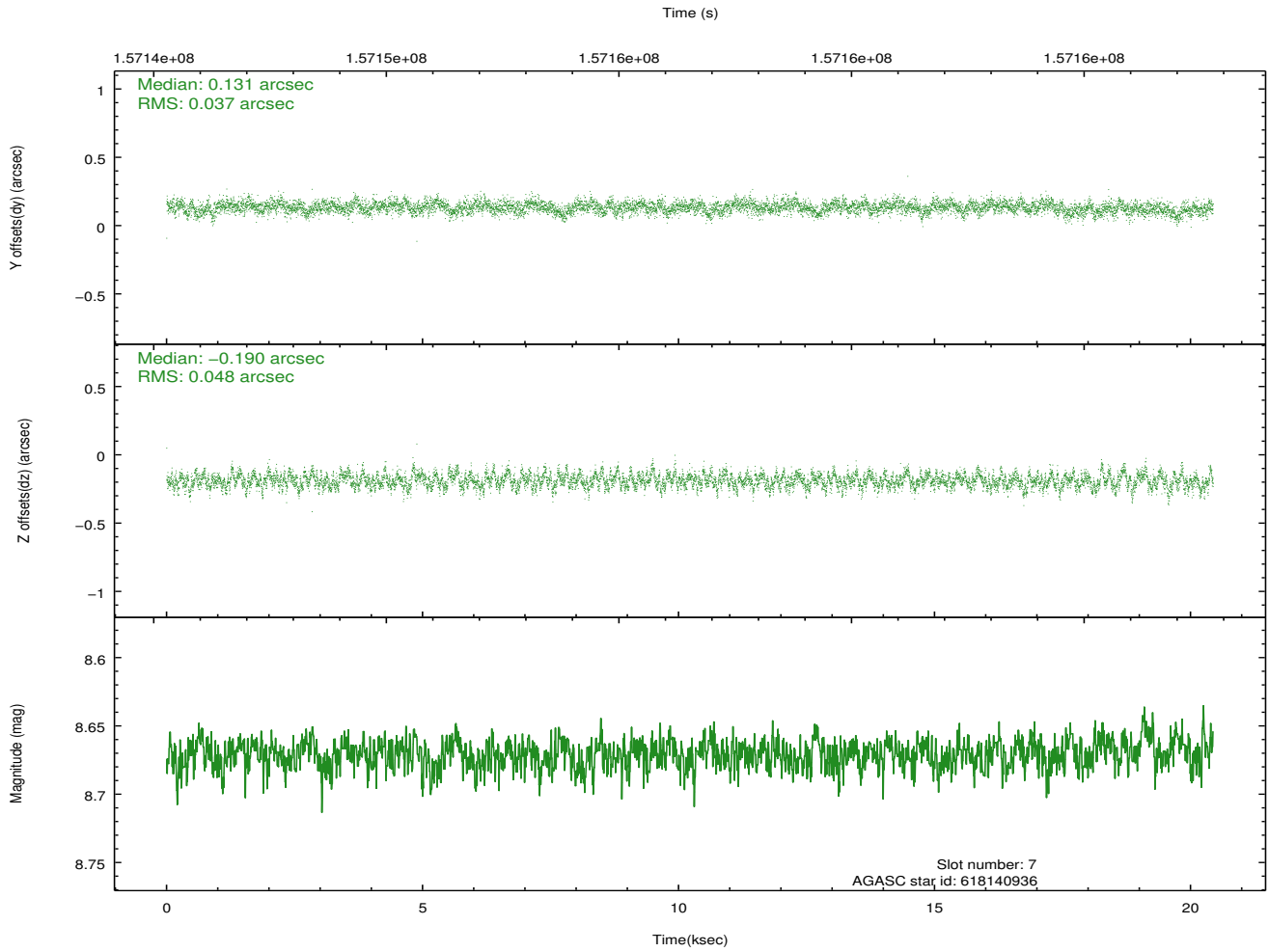
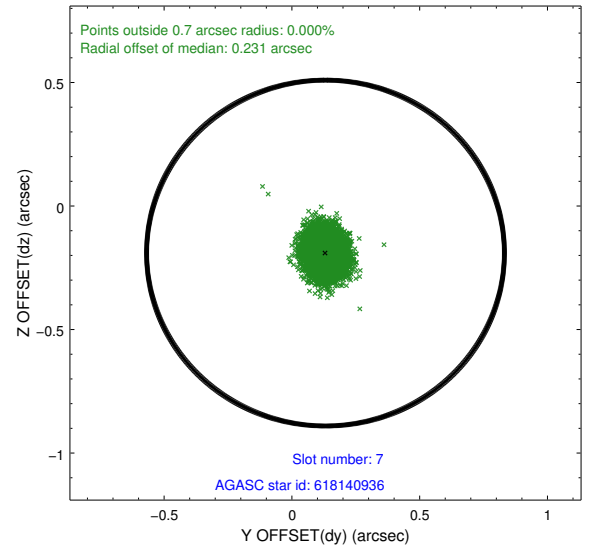
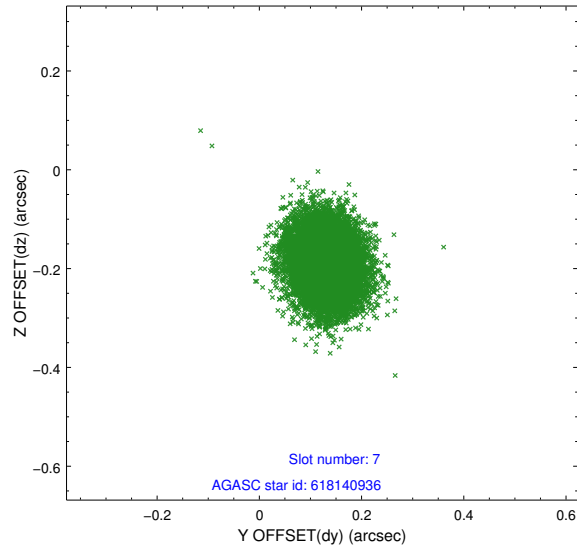
2.4.3 Slot 5



2.4.4 Slot 6

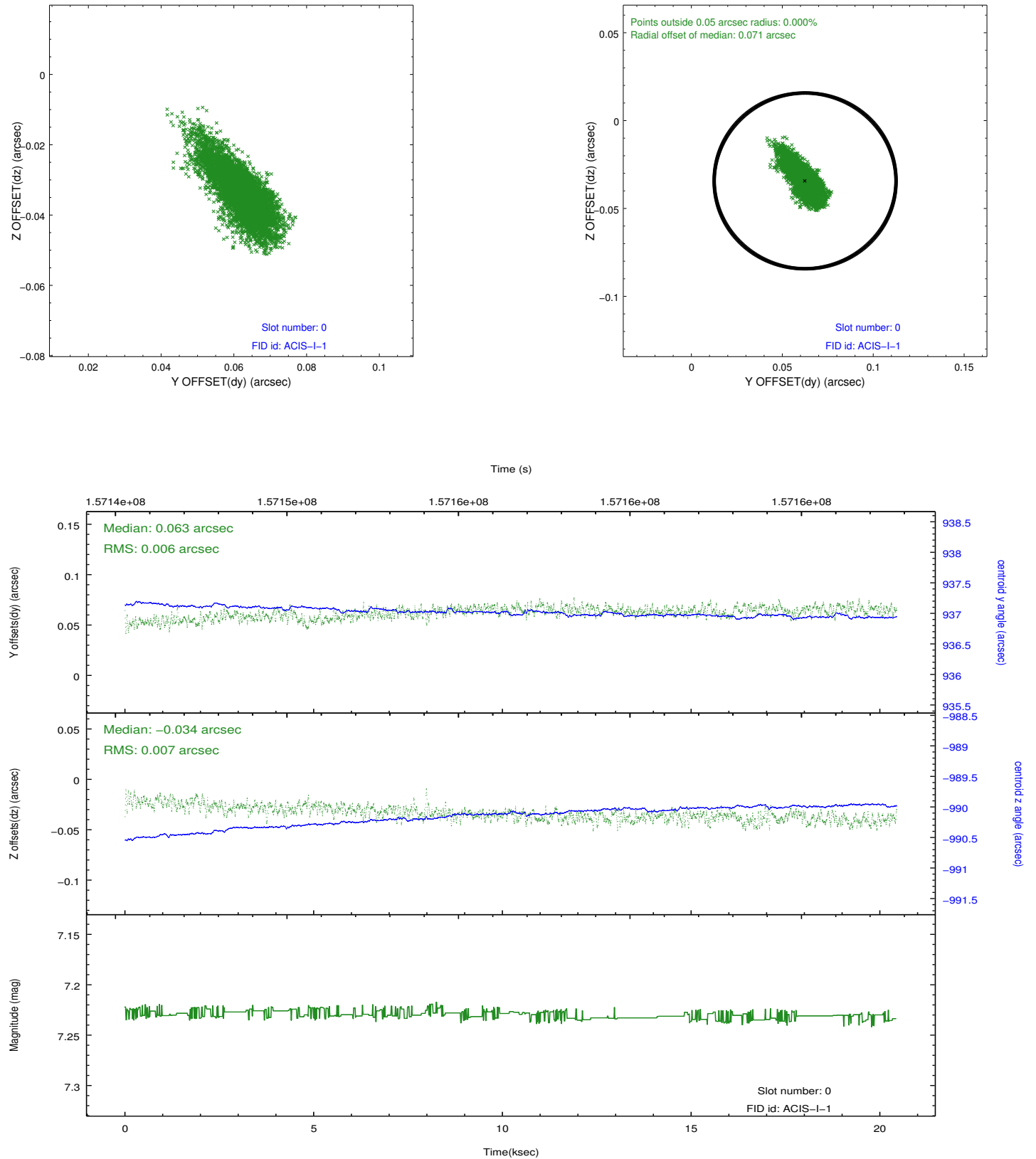


2.4.5 Slot 7

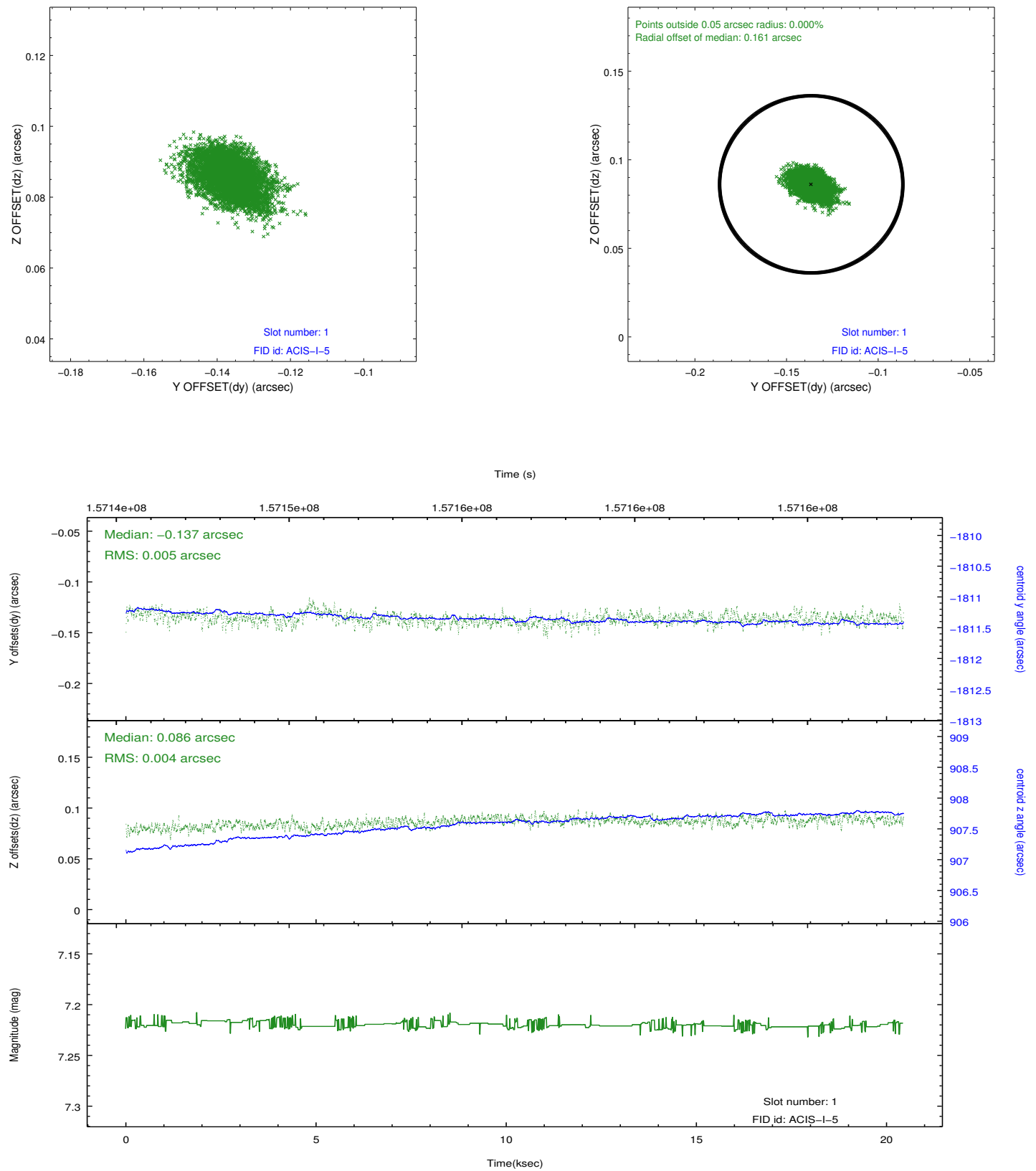


2.5 FID Slots

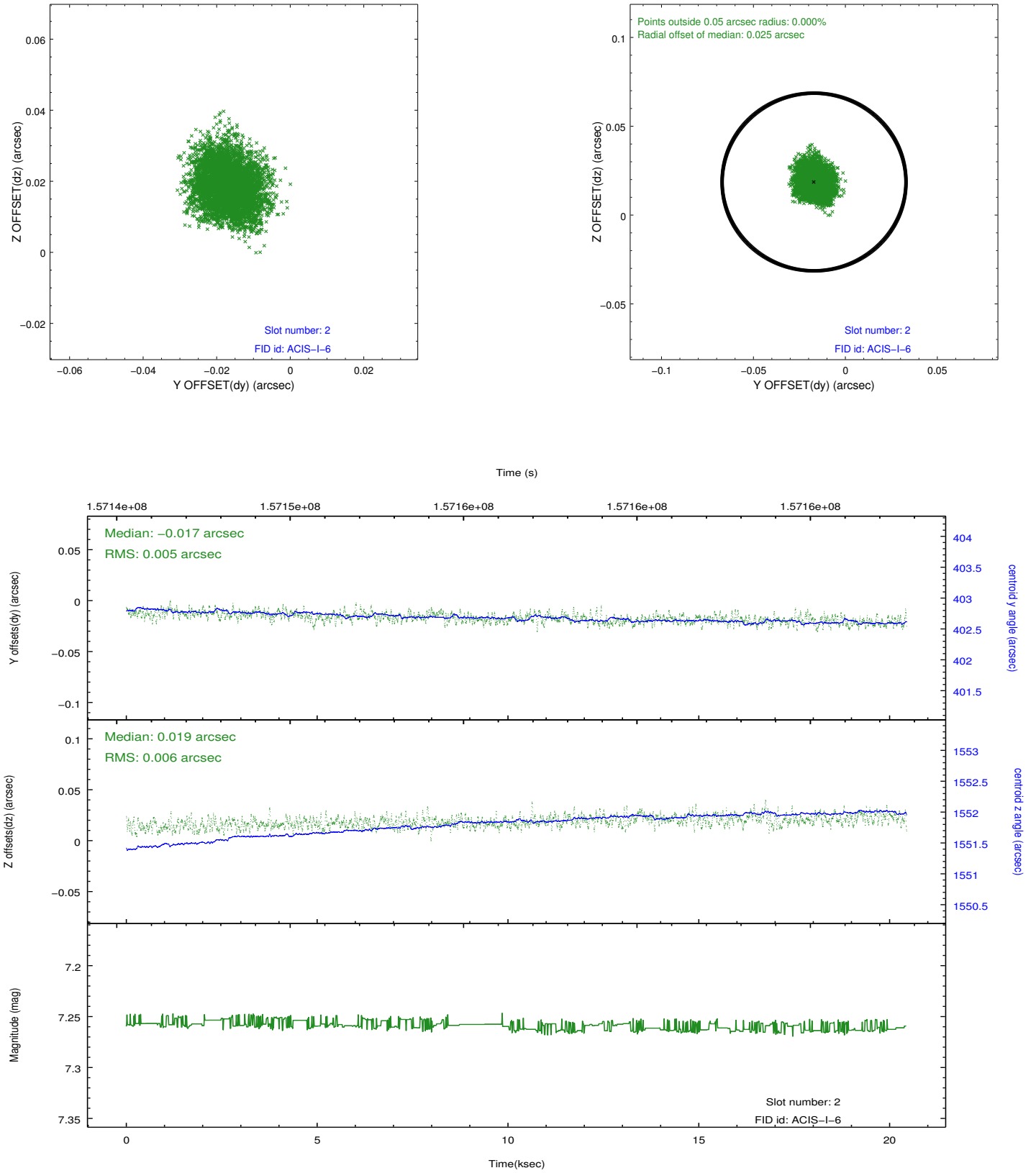
2.5.1 Slot 0



2.5.2 Slot 1



2.5.3 Slot 2



A Summary

A.1 Status

V&V Scientist	Jen Lauer
V&V Date (YYYY-MM-DD)	2012.12.13
V&V Edition	1
V&V Disposition and Status	OK
V&V Charge Time	20.115

A.2 Comments