

V&V Reference Report

L2 ASCDS Version : 8.5.1

Observation 4408 - L2 Version 5
Chandra X-Ray Center

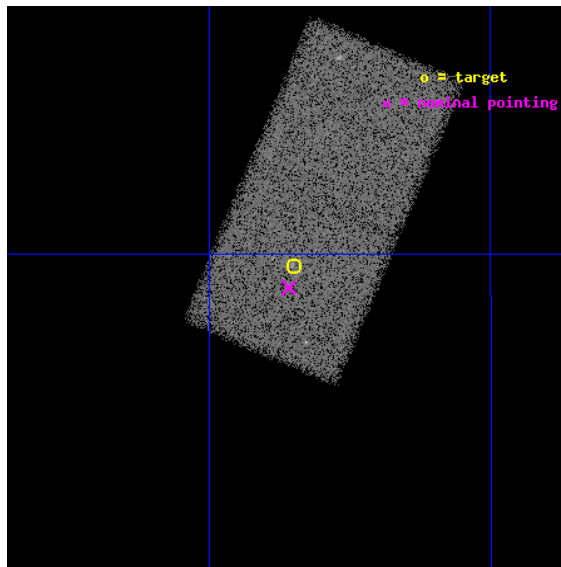
L2 Processing Date : Dec 13 2012

Contents

1	Front	2
2	OBI	3
2.1	OBI	3
2.1.1	Images	3
2.1.2	Bias	3
2.1.3	Parameters	4
2.1.4	Events	4
2.2	Compared Parameters	5
2.3	Aspect	6
2.4	Star Slots	9
2.4.1	Slot 3	9
2.4.2	Slot 4	10
2.4.3	Slot 5	11
2.4.4	Slot 6	12
2.5	FID Slots	13
2.5.1	Slot 0	13
2.5.2	Slot 1	14
2.5.3	Slot 2	15
A	Summary	16
A.1	Status	16
A.2	Comments	16

1 Front

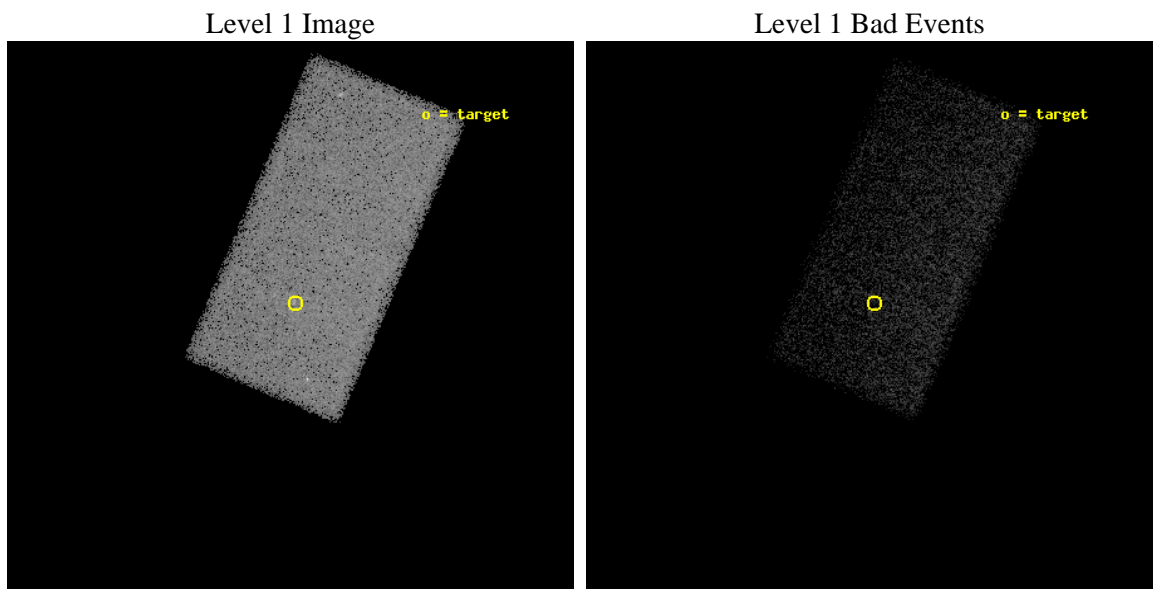
seq_num	700685	Sequence number
obs_id	4408	Observation id
title	QUIESCENT SUPERMASSIVE BLACK HOLES	Proposal title
observer	Dr. Giuseppina Fabbiano	Principal investigator
object	NGC 821	Source name
dtcycle	0	
cycle	P	events from which exps? Prim/Second/Both
ra_targ	32.0875	Observer's specified target RA [deg]
dec_targ	10.994722	Observer's specified target Dec [deg]
ra_nom	32.089718541409	Nominal RA [deg]
dec_nom	10.985277700819	Nominal Dec [deg]
roll_nom	293.01821234464	Nominal Roll [deg]
revision	5	Processing version of data
ontime	24337.5	Sum of GTIs [s]
livetime	23689.359134091	Livetime [s]
ontime7	24337.5	Sum of GTIs [s]
l2events	62267	Number of level 2 events



2 OBI

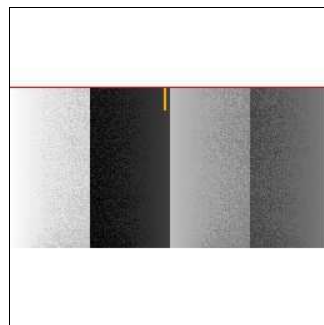
2.1 OBI

2.1.1 Images



2.1.2 Bias

Chip 7



2.1.3 Parameters

obi_num	0	Obi number	sched_exp_time	30000.000000	[s] Scheduled observation exposure time
ascdsver	8.5.1	Processing system revision	ontime	24337.5	Sum of GTIs [s]
caldsver	4.5.5	 	ontime7	24337.5	Sum of GTIs [s]
date	2012-12-13T19:59:48	Date and time of file creation	l1events	124295	Number of level 1 events
revision	6	Processing version of data			

2.1.4 Events

	ccd 7
level 1 events	124295
rejected events	60549
rejected %	48%

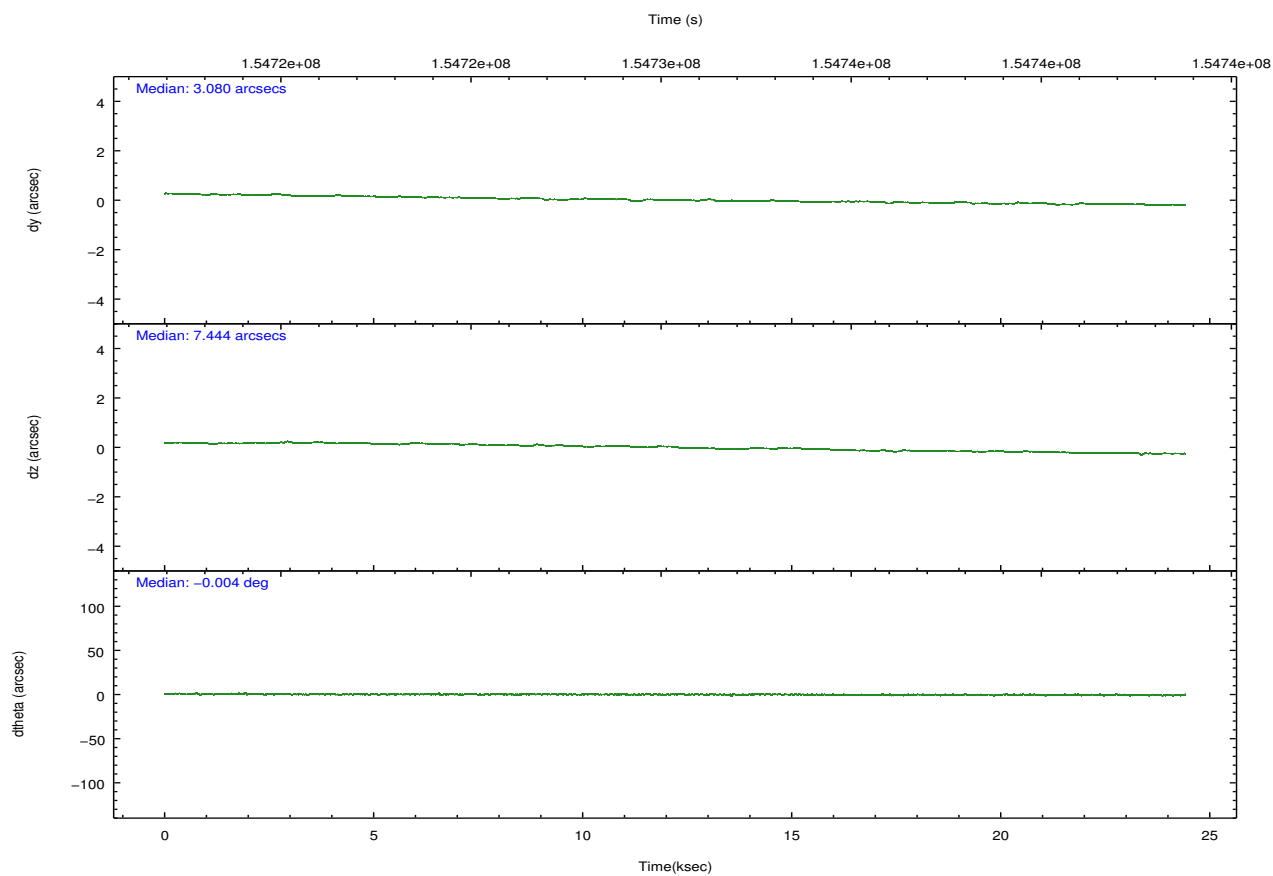
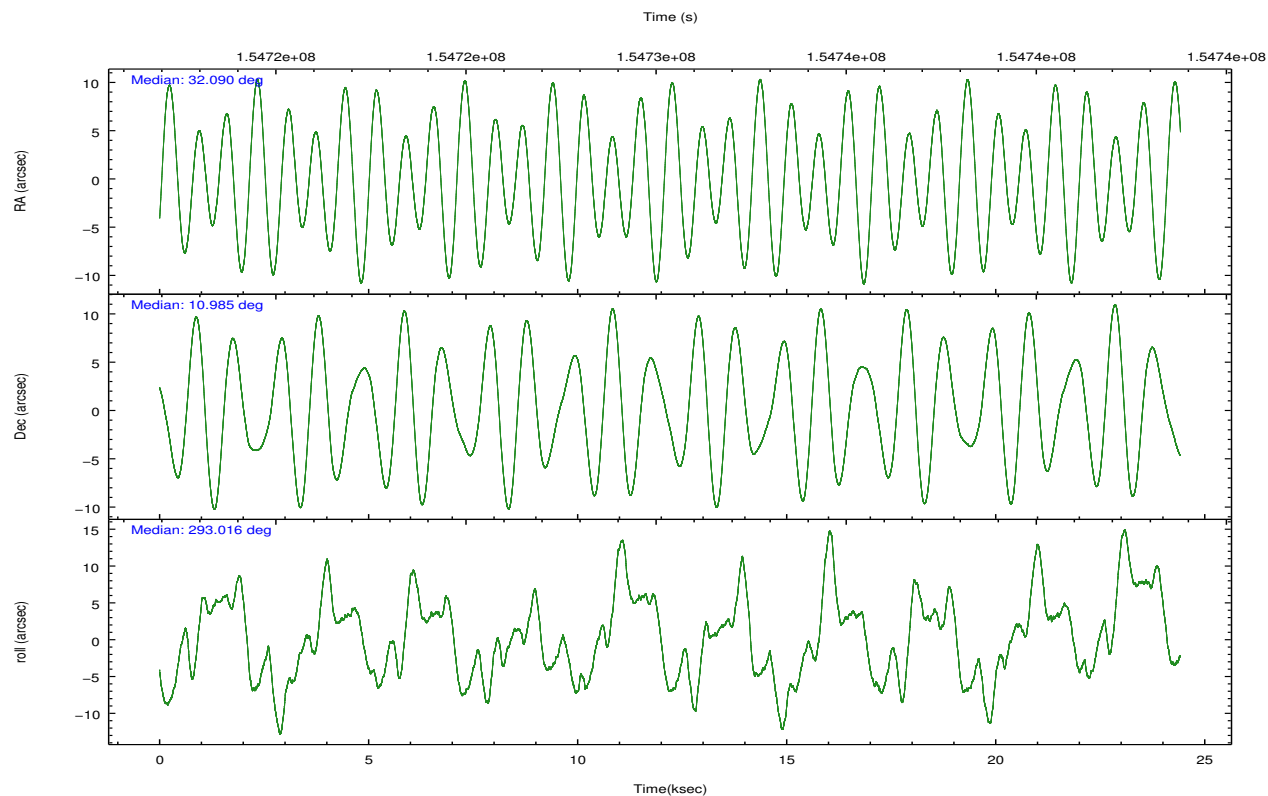
	ccd 7
grade 0 events	6474
	5%
grade 1 events	138
	0%
grade 2 events	12674
	10%
grade 3 events	5938
	4%
grade 4 events	5996
	4%
grade 5 events	10355
	8%
grade 6 events	32824
	26%
grade 7 events	49896
	40%

2.2 Compared Parameters

Parameter	Planned	Actual
Instrument	ACIS	ACIS
Detector	ACIS-7	ACIS-7
Grating	NONE	NONE
Data mode	VFAINT	VFAINT
Observation mode	POINTING	POINTING
[deg] Pointing RA	32.067314	32.0897185414091
[deg] Pointing Dec	11.001377	10.98527770081901
[deg] Pointing Roll	292.865850	293.0182123446431
[mm] SIM focus pos	-0.6828225247311905	-0.6828225247311905
[mm] SIM defocus	0.001444942264670179	0.001444942264670179
[mm] SIM translation stage pos	-190.1400660498719	-190.1400660498719
[mm] SIM translation stage offset	0.007542945904702947	0.007542945904702947
[s] Observation start time (MET)	154718161.184000	154718161.184
Observation start date	2002-11-26T17:14:57	2002-11-26T17:16:01
[s] Observation end time (MET)	154742579.900000	154742579.9
Observation end date	2002-11-27T00:03:00	2002-11-27T00:02:59
Read mode	TIMED	TIMED

Parameter	Planned	Actual
Obspar format version number	7	7
Obspar file type	PREDICTED	ACTUAL
Obspar update status	OVERRIDE	OVERRIDE
Number of optional ACIS chips dropped	0	0
On-chip summing requested	N	N
Subarray requested	CUSTOM	CUSTOM
Subarray start row	257	257
Subarray row count	512	512
Alternating exposures requested	N	N
[s] Primary exposure time	1.5	1.5

2.3 Aspect

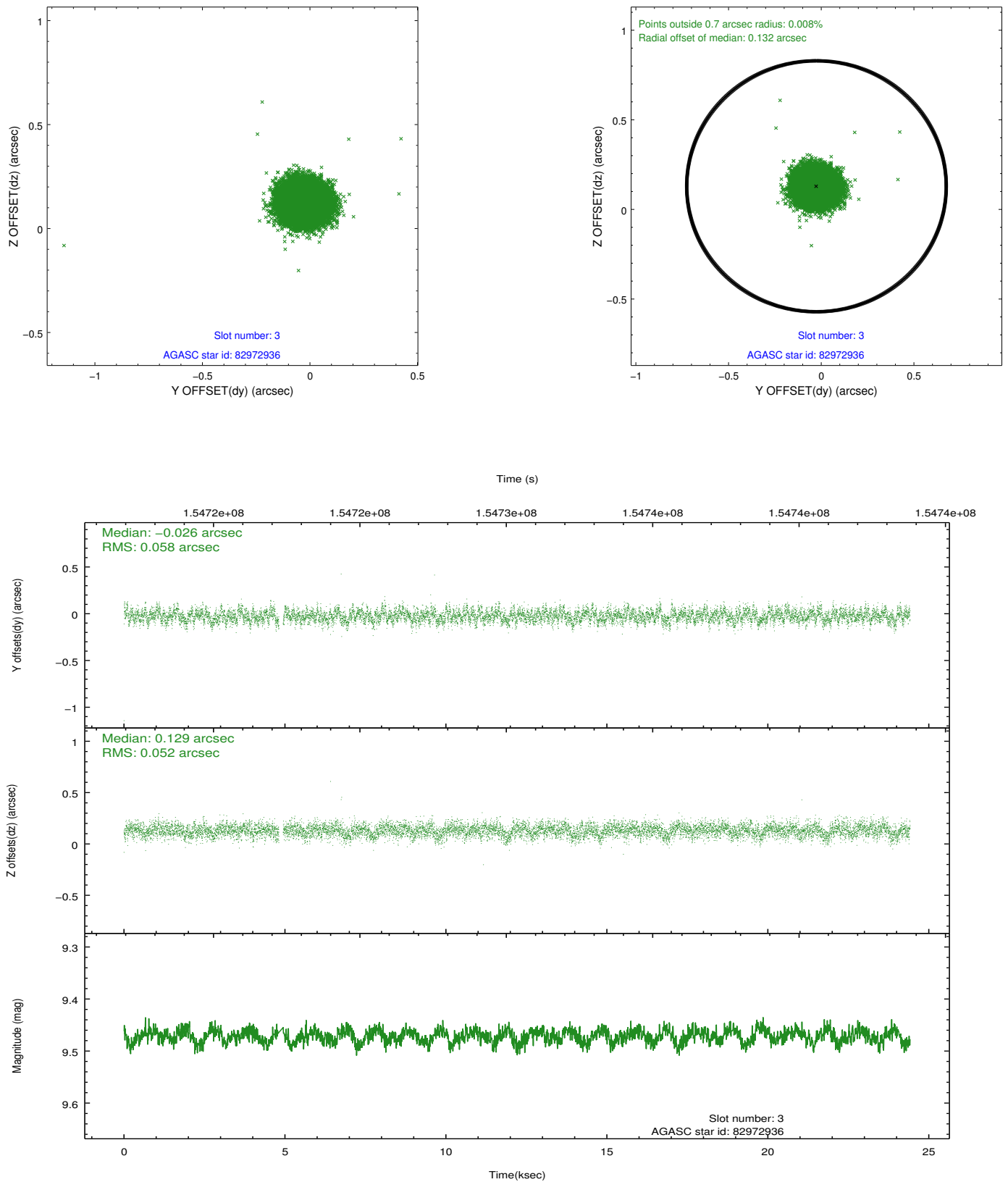


Slot Statistics

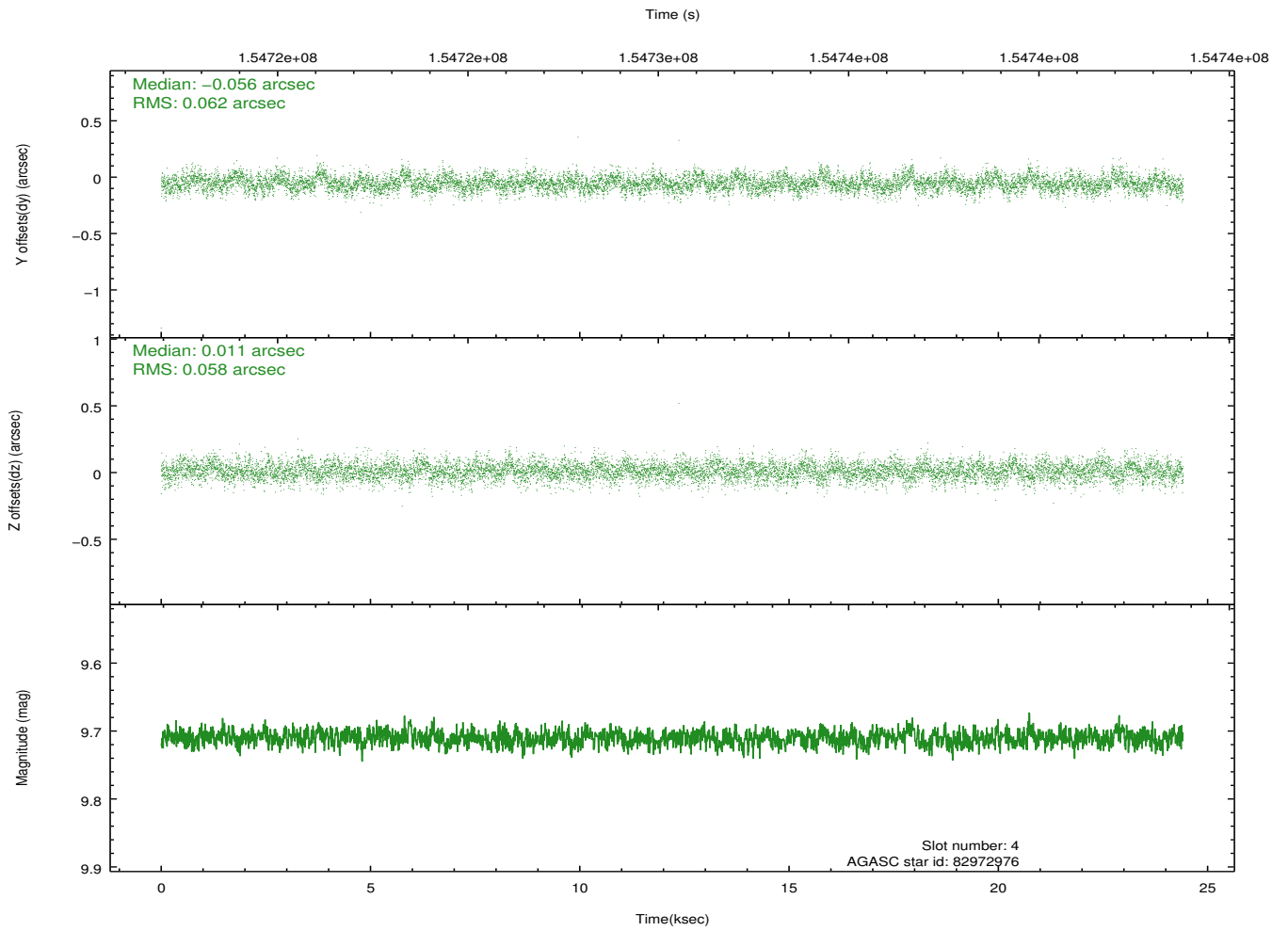
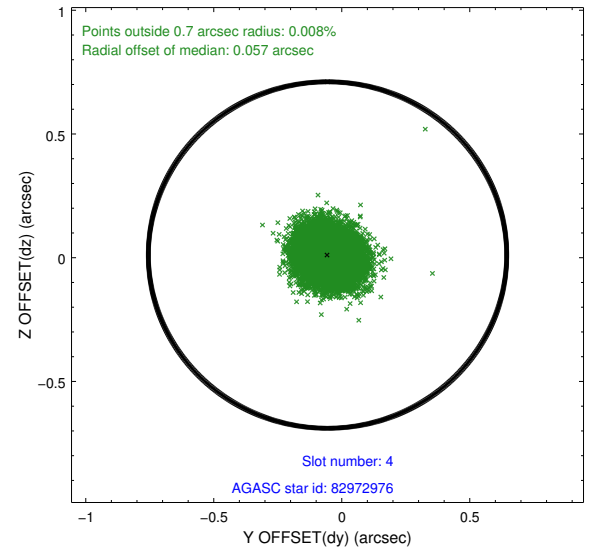
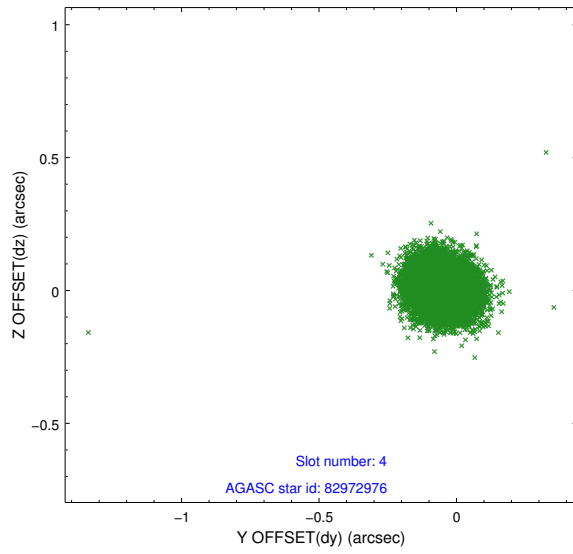
slot	status	id	mag	n_pts	med_dy	med_dz	dr1	dr2	ra	dec	mean_y	mean_z
0	FID	ACIS-S-2	7.11	5956	-0.016	-0.004	0.008	0.018	0.000000	0.000000	-755.76	-1728.61
1	FID	ACIS-S-4	7.20	5956	0.005	0.009	0.008	0.021	0.000000	0.000000	2157.49	179.74
2	FID	ACIS-S-5	7.24	5956	-0.020	0.004	0.009	0.016	0.000000	0.000000	-1808.44	173.56
3	GUIDE	82972936	9.47	11843	-0.026	0.129	0.082	0.132	31.880349	11.323150	-1325.29	-158.38
4	GUIDE	82972976	9.71	11907	-0.056	0.011	0.089	0.146	31.722409	11.276757	-1388.52	-737.06
5	GUIDE	82974960	9.82	11904	-0.059	-0.093	0.098	0.166	31.911636	11.621581	-2272.13	361.10
6	GUIDE	82976744	9.51	11902	0.138	-0.051	0.082	0.140	32.095784	10.602457	1361.09	-465.69
7	OMITTED		0.00	0	0.000	0.000	0.000	0.000	0.000000	0.000000	0.00	0.00

2.4 Star Slots

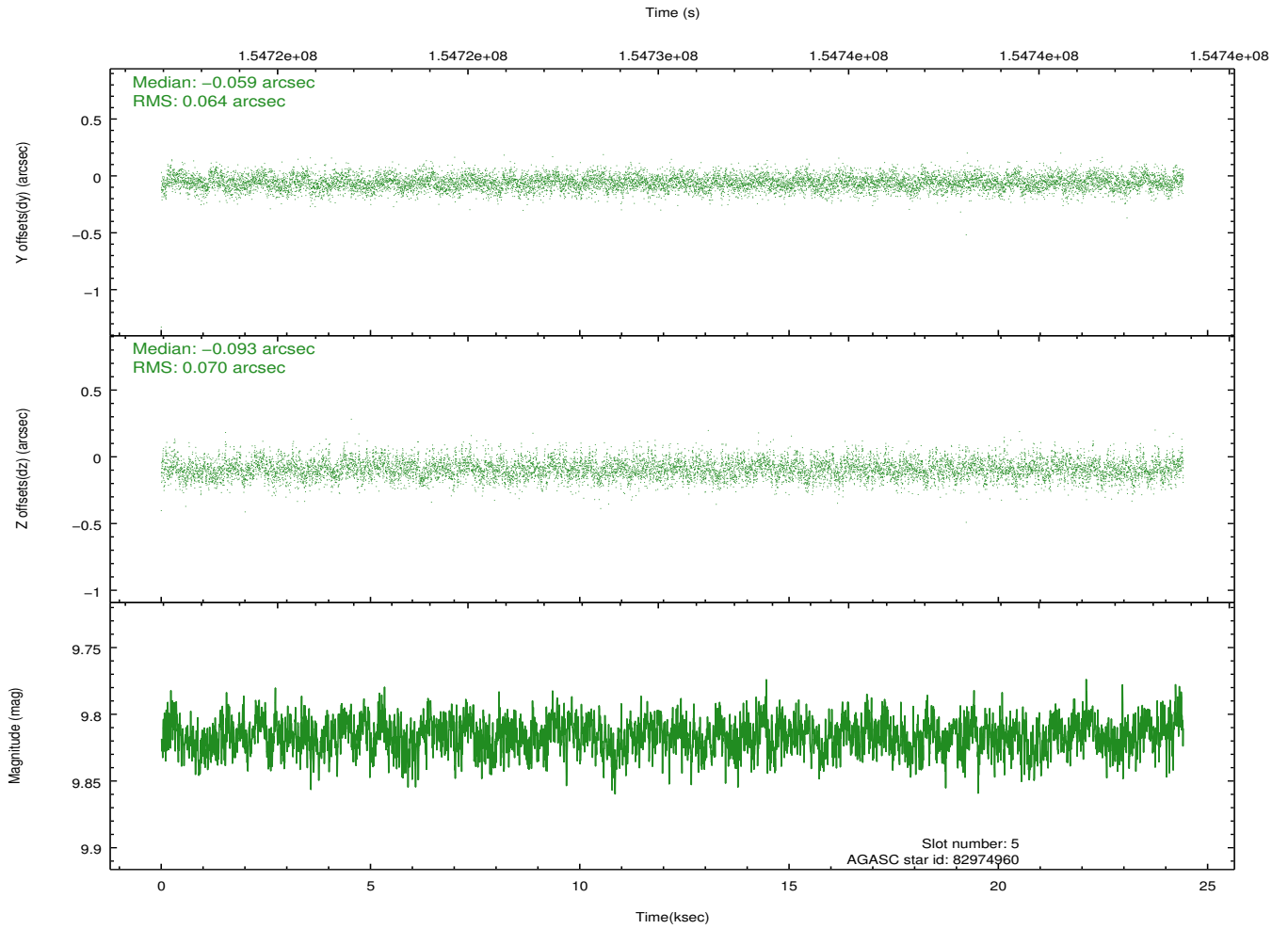
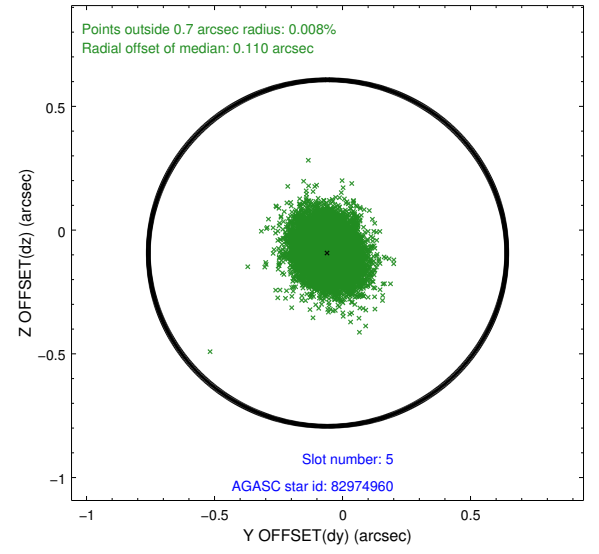
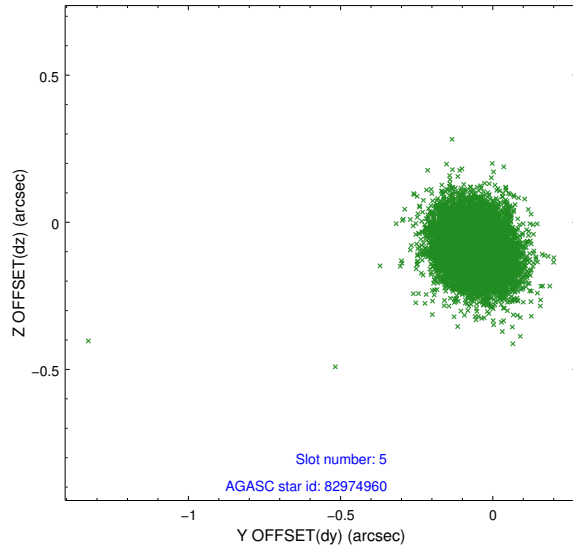
2.4.1 Slot 3



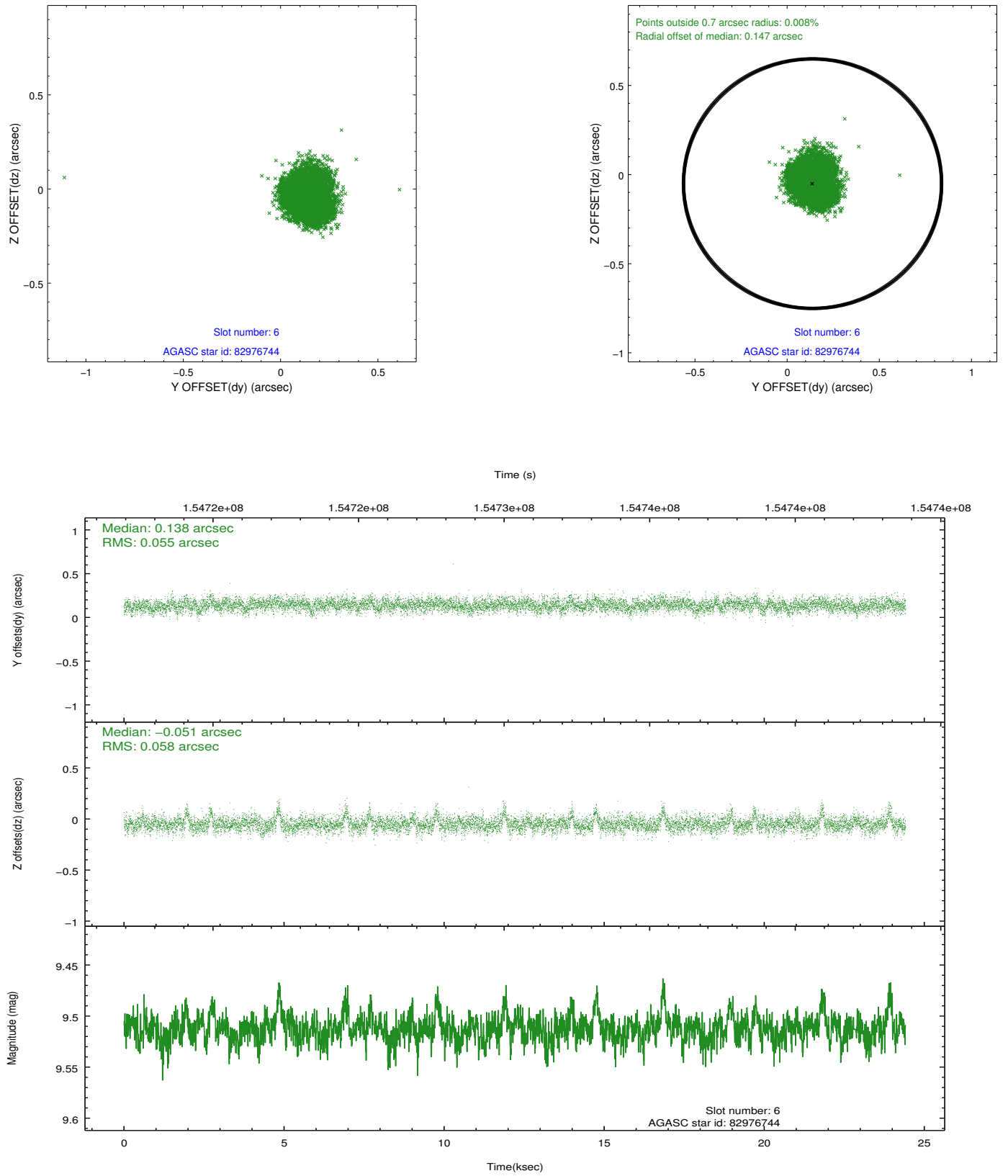
2.4.2 Slot 4



2.4.3 Slot 5

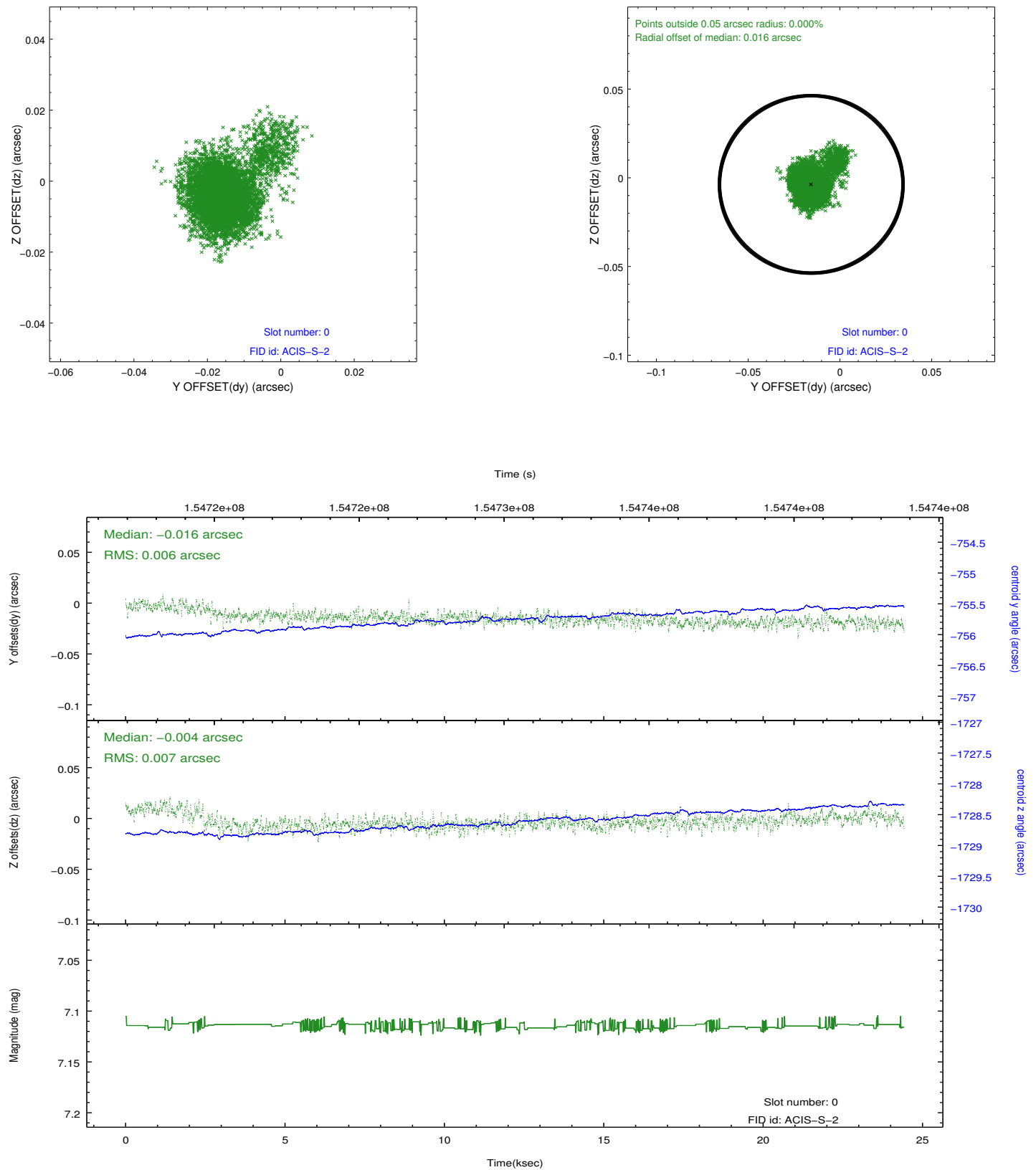


2.4.4 Slot 6

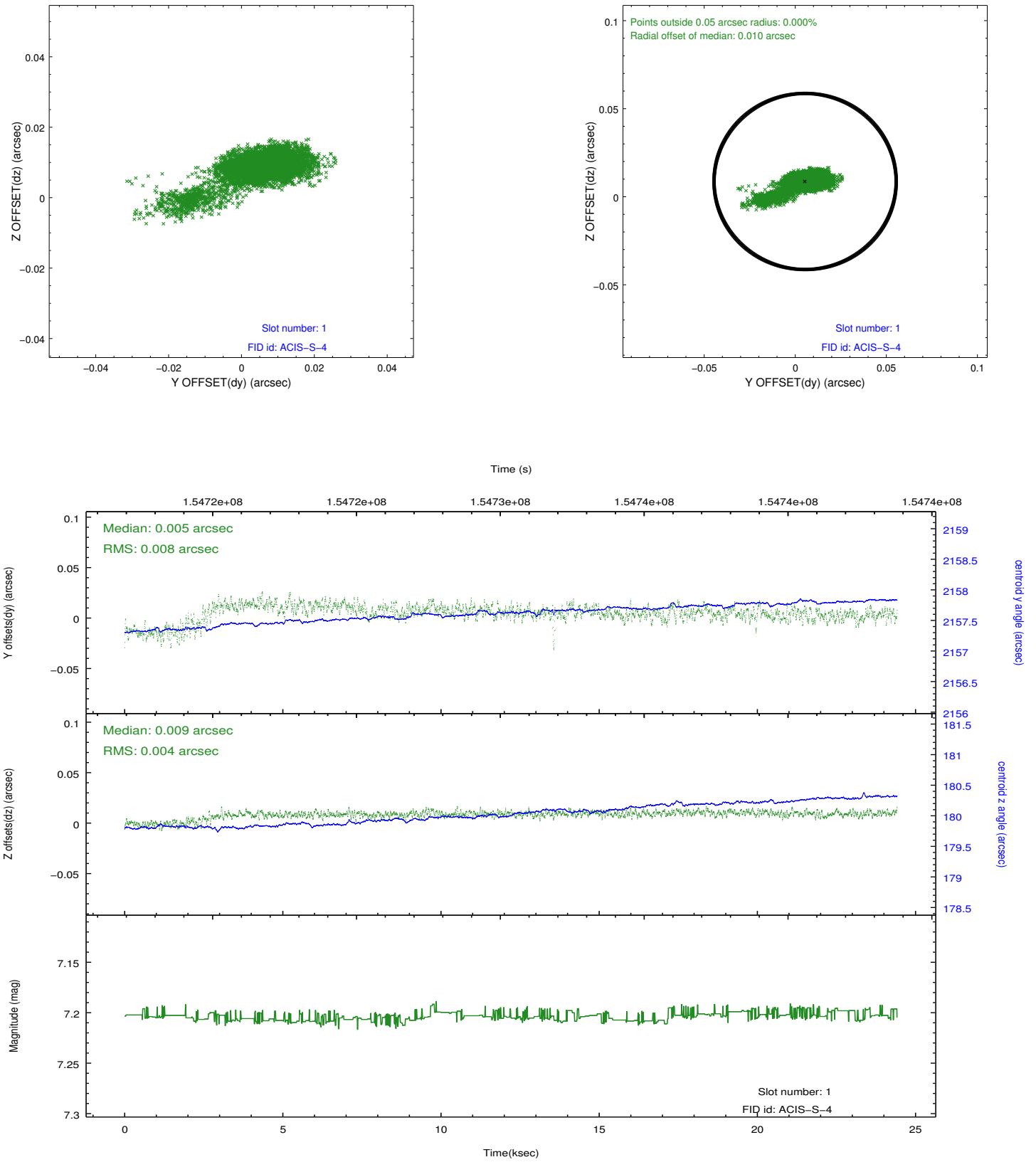


2.5 FID Slots

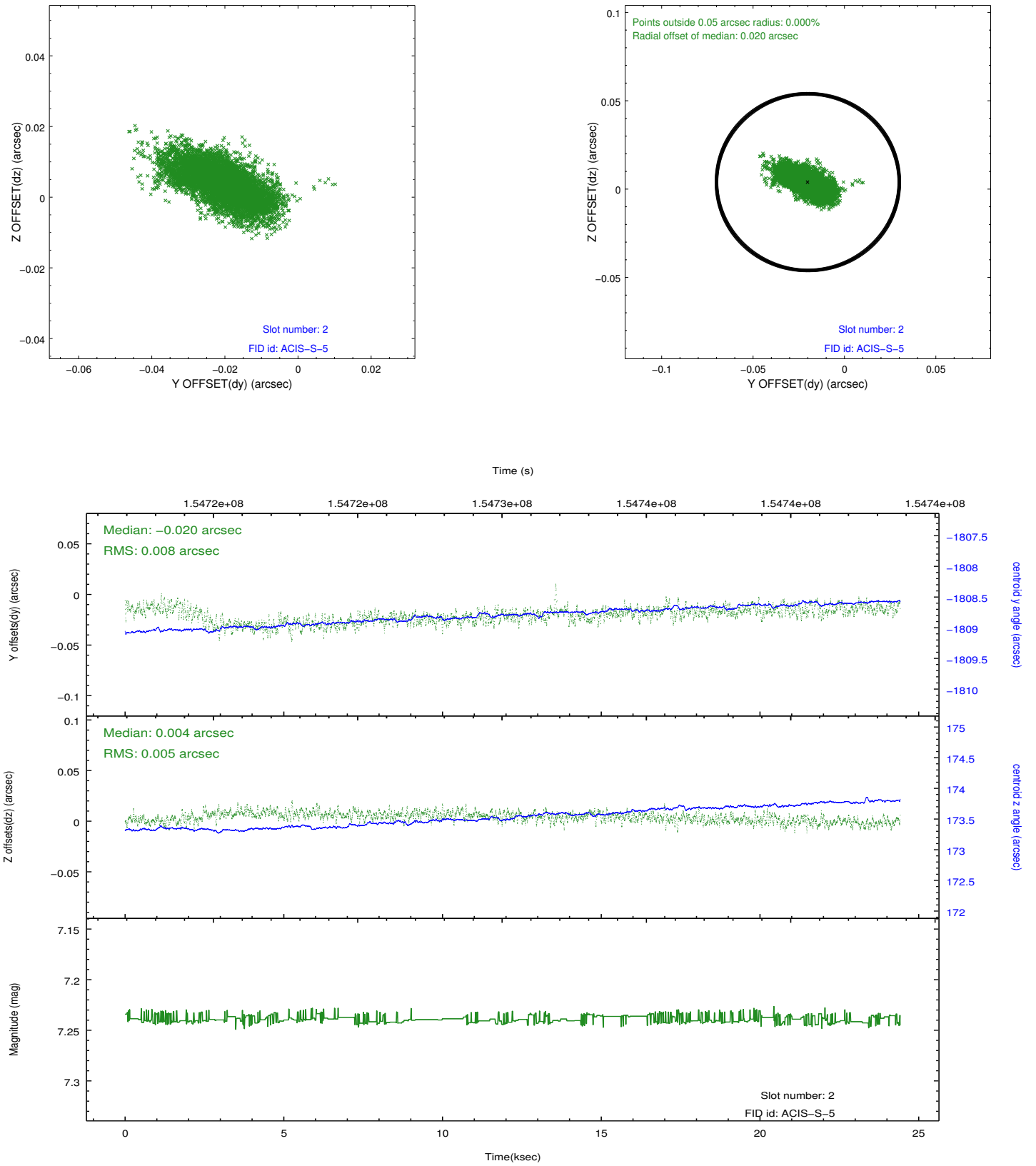
2.5.1 Slot 0



2.5.2 Slot 1



2.5.3 Slot 2



A Summary

A.1 Status

V&V Scientist	Jen Lauer
V&V Date (YYYY-MM-DD)	2013.01.10
V&V Edition	1
V&V Disposition and Status	OK
V&V Charge Time	25.275

A.2 Comments

Charge time for this ObsId remains at previous value of 25.275 ks although with the current processing the charge time would have been 24.34 ksec.

=====

The guide star in slot 7 was removed from the aspect solution due to poor data quality. The aspect solution is improved by the removal of this guide star from the solution.

=====

This observation was interrupted by safing of the science instruments onboard Chandra due to high solar radiation environment. The observation was interrupted at 331:00:04:55 GMT. Due to a high radiation environment, the instruments were safed and the observation terminated early. This observation has been reprocessed so that the aspect solution correctly handles the instrument safing and maneuver activities at the end of the observation.