

V&V Reference Report

L2 ASCDS Version : 7.6.8.1

Observation 4146 - L2 Version 001
Chandra X-Ray Center

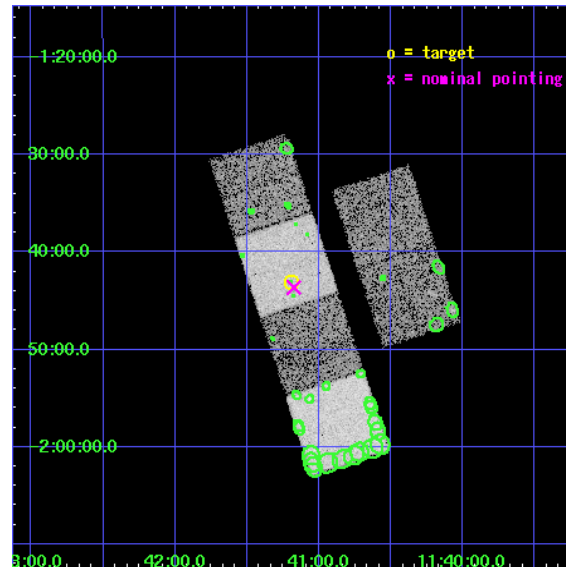
L2 Processing Date : Aug 4 2006

Contents

1	Front	2
2	OBI	3
2.1	OBI	3
2.1.1	Images	3
2.1.2	Bias	3
2.1.3	Parameters	4
2.1.4	Events	4
2.2	Compared Parameters	5
2.3	Aspect	6
2.4	Star Slots	9
2.4.1	Slot 3	9
2.4.2	Slot 4	10
2.4.3	Slot 5	11
2.4.4	Slot 6	12
2.4.5	Slot 7	13
2.5	FID Slots	14
2.5.1	Slot 0	14
2.5.2	Slot 1	15
2.5.3	Slot 2	16
3	Point Sources	17
A	Summary	18
A.1	Status	18
A.2	Comments	18

1 Front

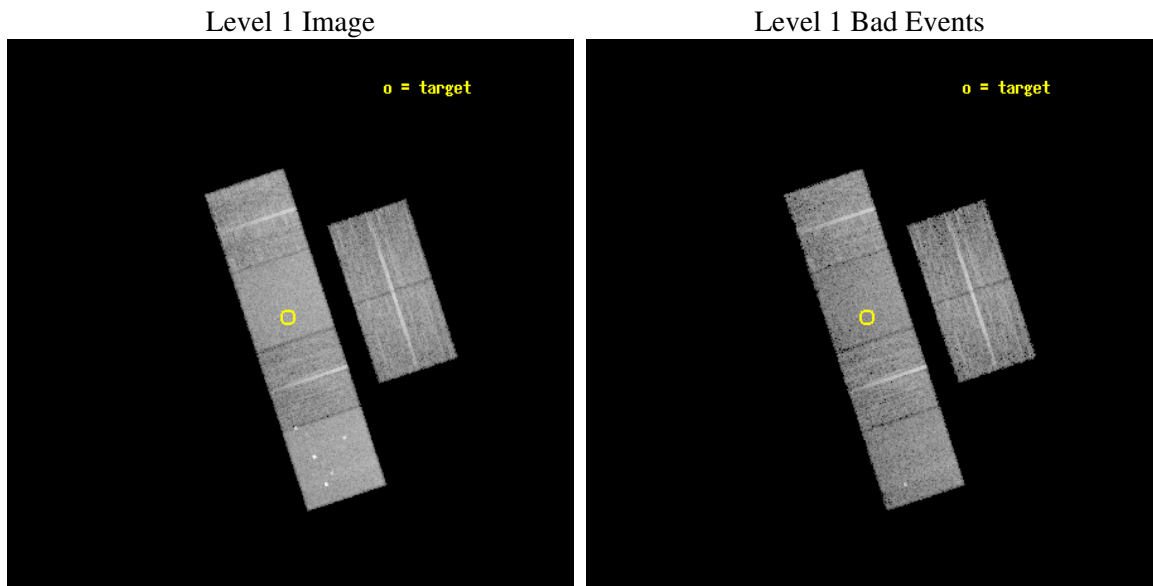
seq_num	700825
obs_id	4146
title	X-RAYS FROM BROAD ABSORPTION LINE QUASARS WITH EXTREME PROPERTIES
observer	Dr. Patrick Hall
object	UN J1141-0143
dtcycle	0
cycle	P
ra_targ	175.298333
dec_targ	-1.718806
ra_nom	175.2937052566
dec_nom	-1.7273284021666
roll_nom	251.73363891849
revision	2
ontime	10150.399962187
livetime	10021.869486029
ontime2	10150.399962187
ontime3	10150.399962187
ontime5	10150.399962187
ontime6	10150.399962187
ontime7	10150.399962187
ontime8	10150.399962187
l2events	95284



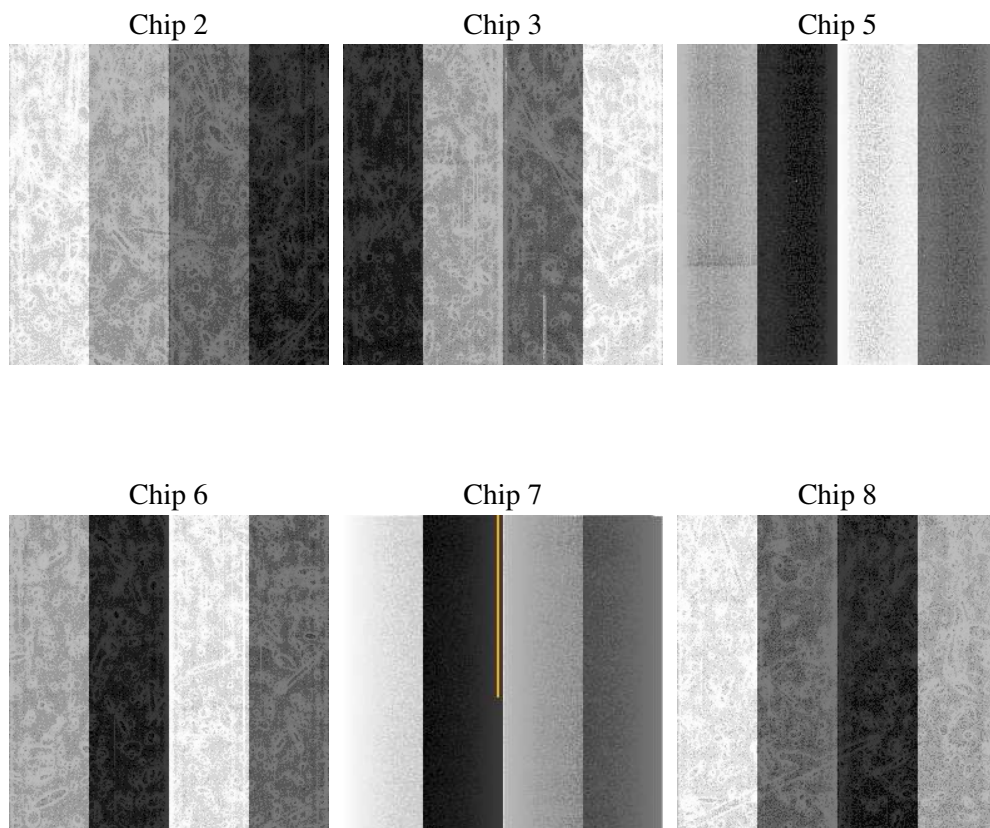
2 OBI

2.1 OBI

2.1.1 Images



2.1.2 Bias



2.1.3 Parameters

obi_num	2
ascdsver	7.6.8.1
caldbver	3.2.2
date	2006-08-05T00:35:10
revision	2

sched_exp_time	10000.000000
ontime	10786.076286346
ontime2	10786.076286346
ontime3	10786.076286346
ontime5	10786.076286346
ontime6	10786.076286346
ontime7	10786.076286346
ontime8	10786.076286346
l1events	476373

2.1.4 Events

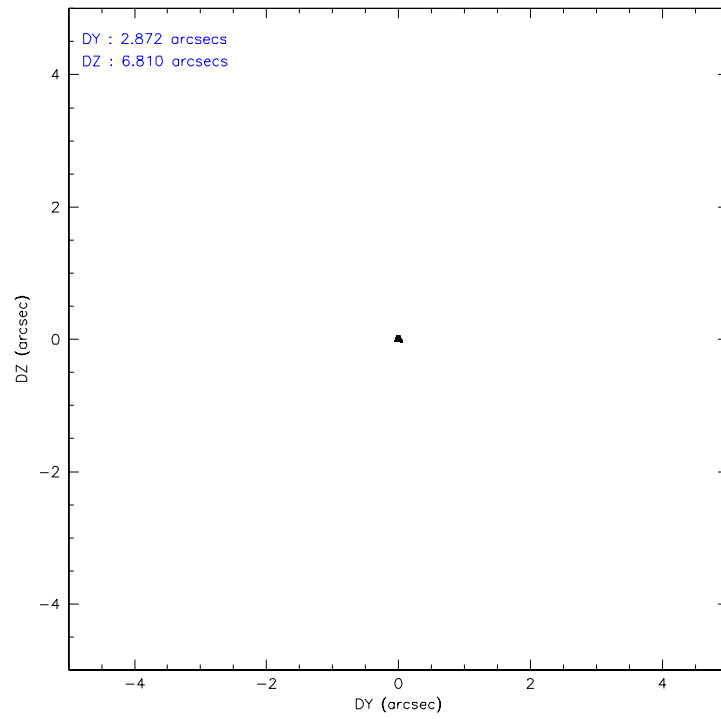
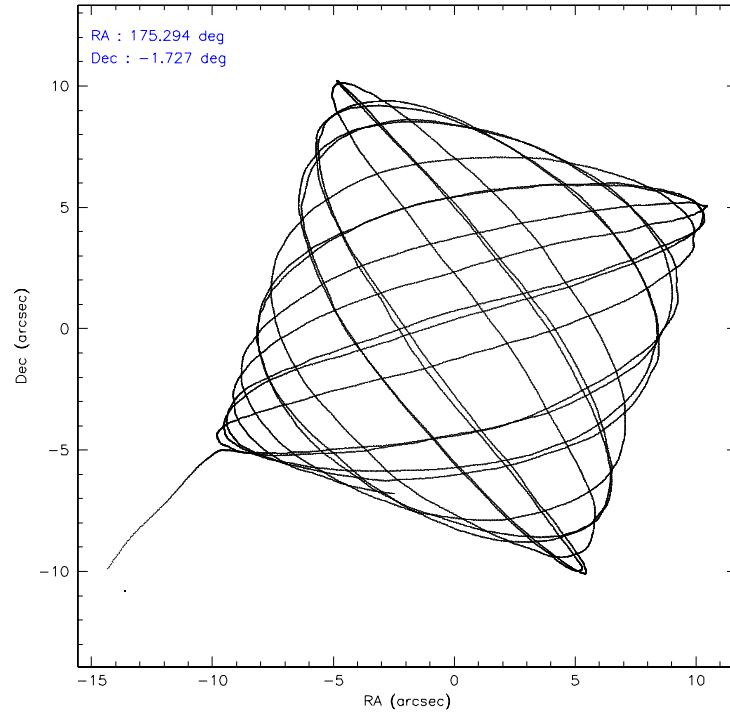
	ccd 2	ccd 3	ccd 5	ccd 6	ccd 7	ccd 8
level 1 events	70185	65571	98847	68377	89294	84099
rejected events	62523	58390	57302	60934	57650	67923
rejected %	89%	89%	57%	89%	64%	80%

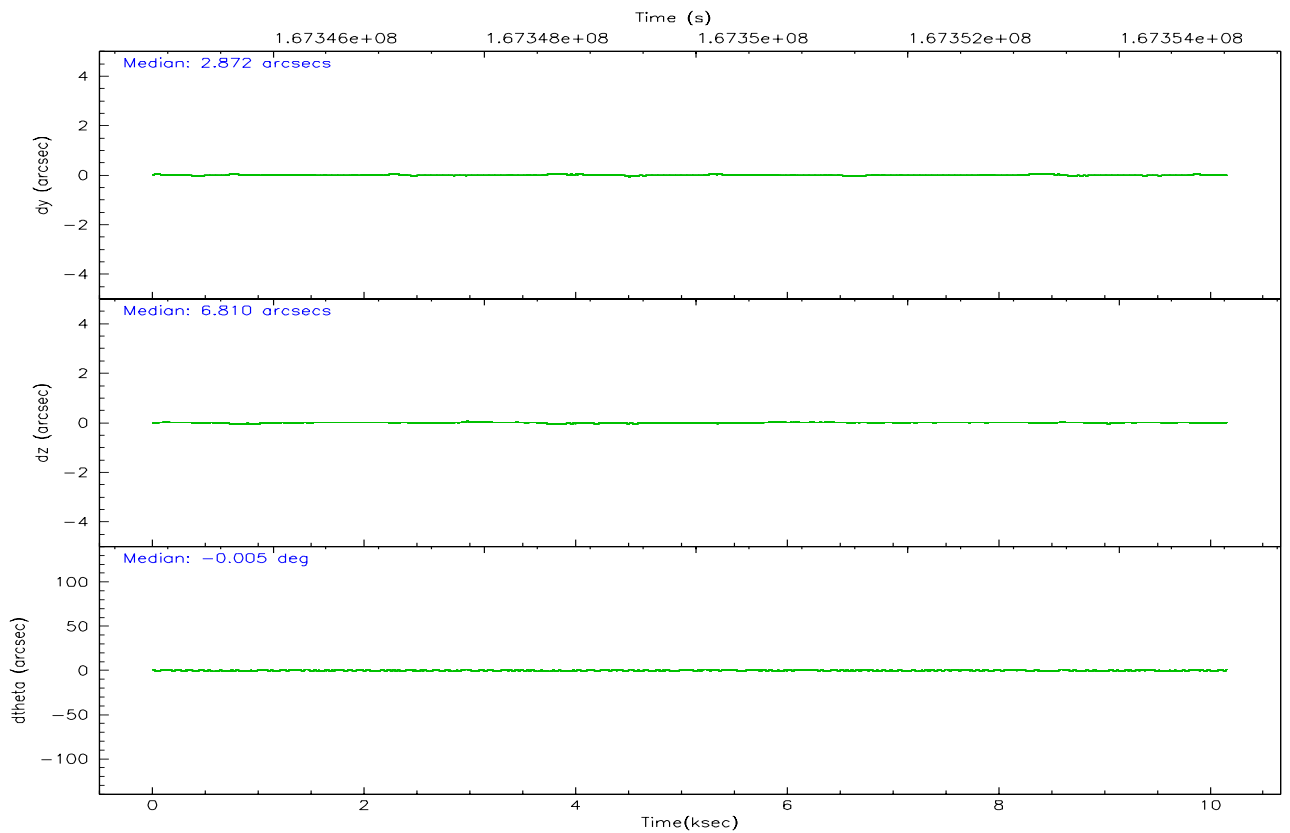
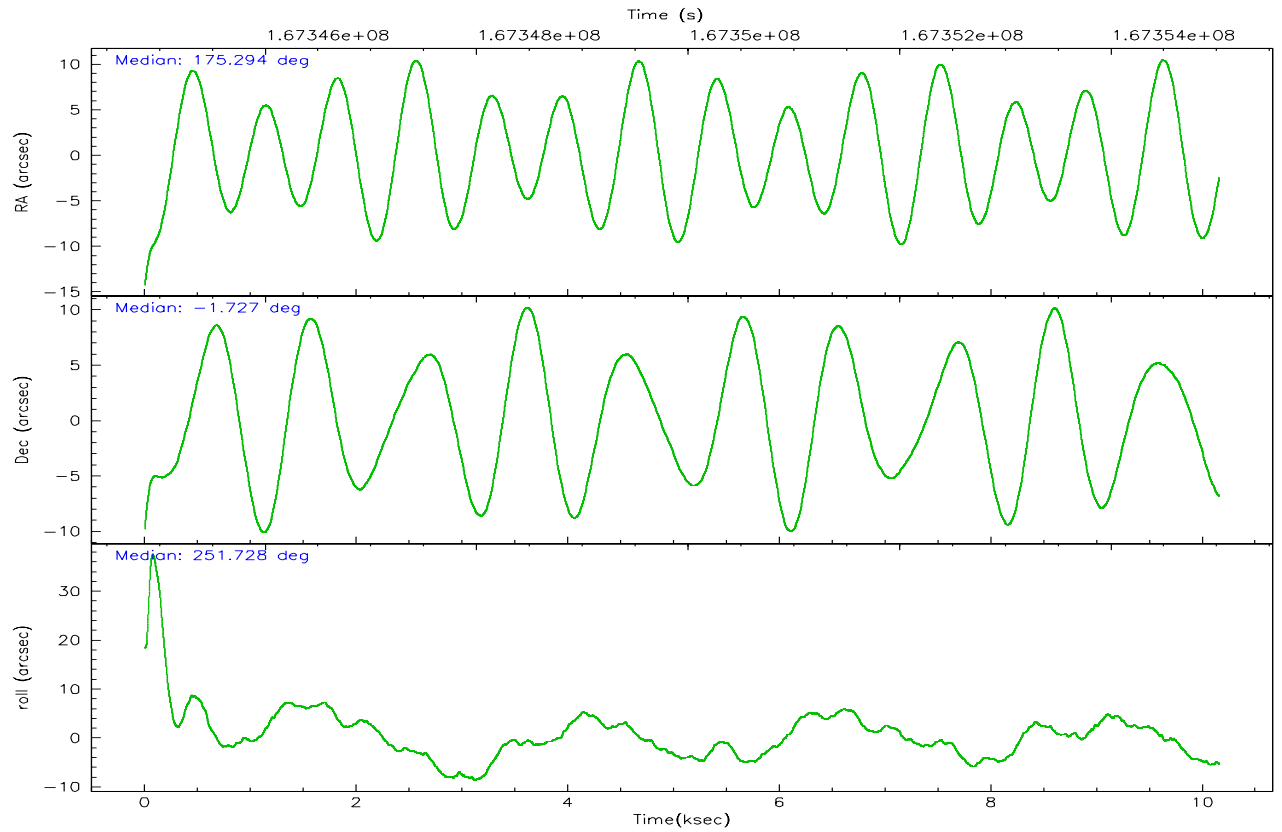
	ccd 2	ccd 3	ccd 5	ccd 6	ccd 7	ccd 8
grade 0 events	3596	3337	4522	3170	1915	5360
	5%	5%	4%	4%	2%	6%
grade 1 events	33	52	161	31	66	48
	0%	0%	0%	0%	0%	0%
grade 2 events	1610	1382	13365	1624	8412	3660
	2%	2%	13%	2%	9%	4%
grade 3 events	790	806	1107	777	1689	1898
	1%	1%	1%	1%	1%	2%
grade 4 events	788	769	958	780	1558	1816
	1%	1%	0%	1%	1%	2%
grade 5 events	2675	2849	4896	3060	6102	3760
	3%	4%	4%	4%	6%	4%
grade 6 events	1343	1343	24290	1589	20067	4410
	1%	2%	24%	2%	22%	5%
grade 7 events	59350	55033	49548	57346	49485	63147
	84%	83%	50%	83%	55%	75%

2.2 Compared Parameters

Parameter	Planned	Actual	Parameter	Planned	Actual
Instrument	ACIS	ACIS	Obspar format version number	6	6
Detector	ACIS-235678	ACIS-235678	Obspar file type	PREDICTED	ACTUAL
Grating	NONE	NONE	Obspar update status	NONE	UPDATED
Data mode	FAINT	FAINT	On-chip summing requested	N	N
Observation mode	POINTING	POINTING	Subarray requested	NONE	NONE
Pointing RA	175.287840	175.2937052566012	Alternating exposures requested	N	N
Pointing Dec	-1.700732	-1.727328402166604	Primary exposure time	0.000000	3.2
Pointing Roll	251.576848	251.7336389184925			
SIM focus pos (mm)	-0.684267	-0.6828225247311905			
SIM defocus (mm)	0	0.001444936568705701			
SIM translation stage pos (mm)	-190.132523	-190.145094680475			
SIM translation stage offset (mm)	0	0.01257209746719923			
Observation start time	167345025.184000	167343654.09492			
Observation start date	2003-04-21T20:42:41	2003-04-21T20:20:54			
Observation end time	167355025.184000	167355783.43293			
Observation end date	2003-04-21T23:29:21	2003-04-21T23:43:03			
Read mode	TIMED	TIMED			

2.3 Aspect



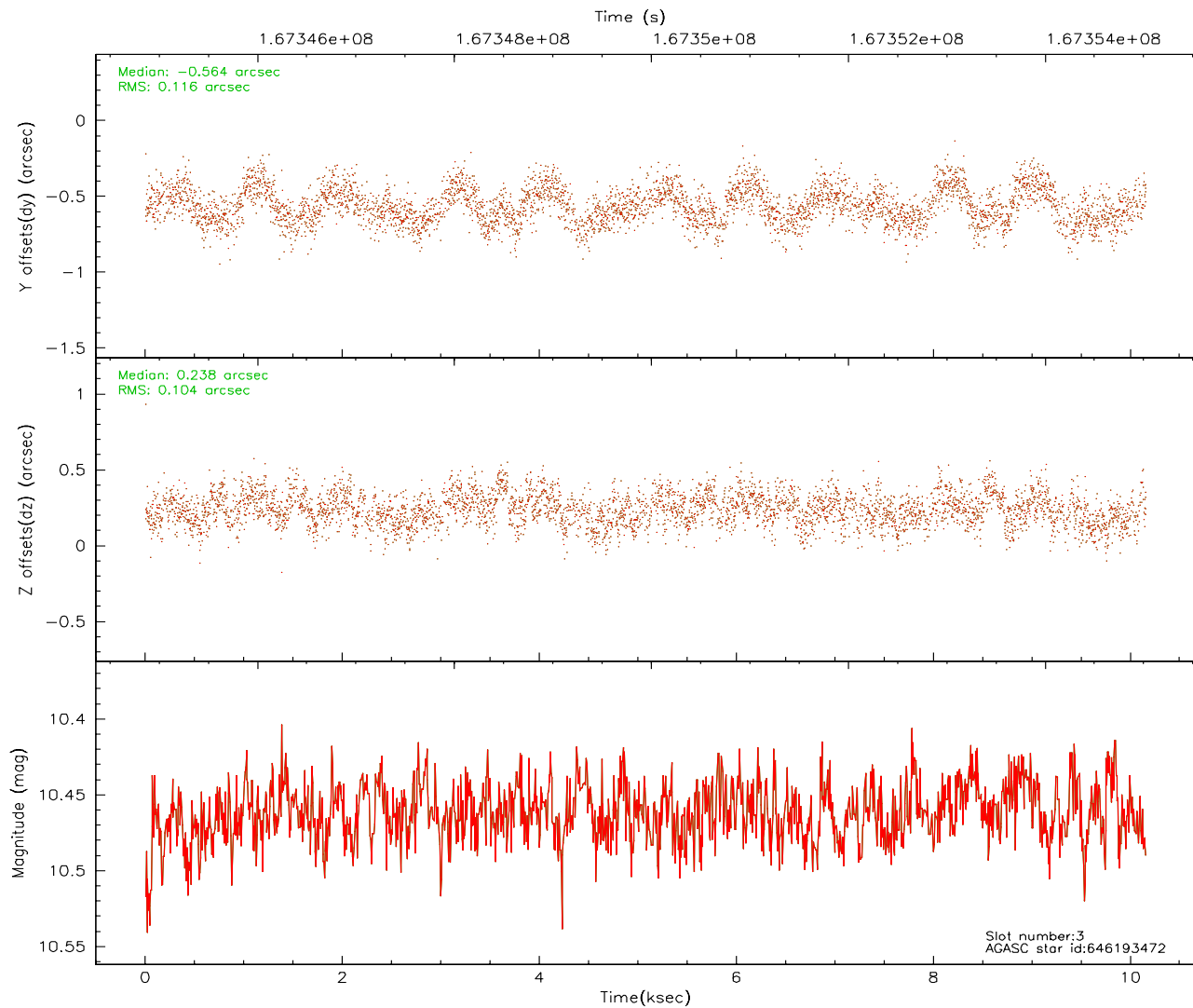
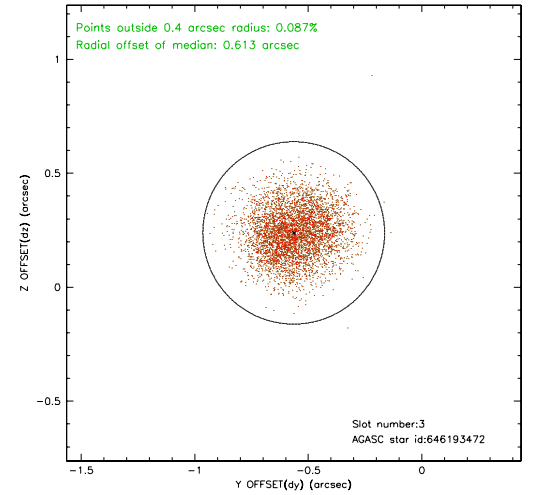
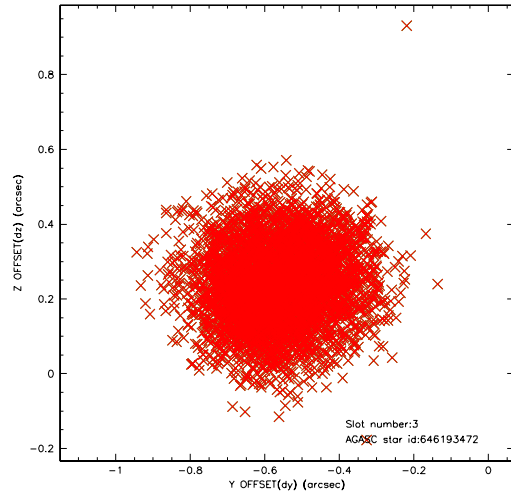


Slot Statistics

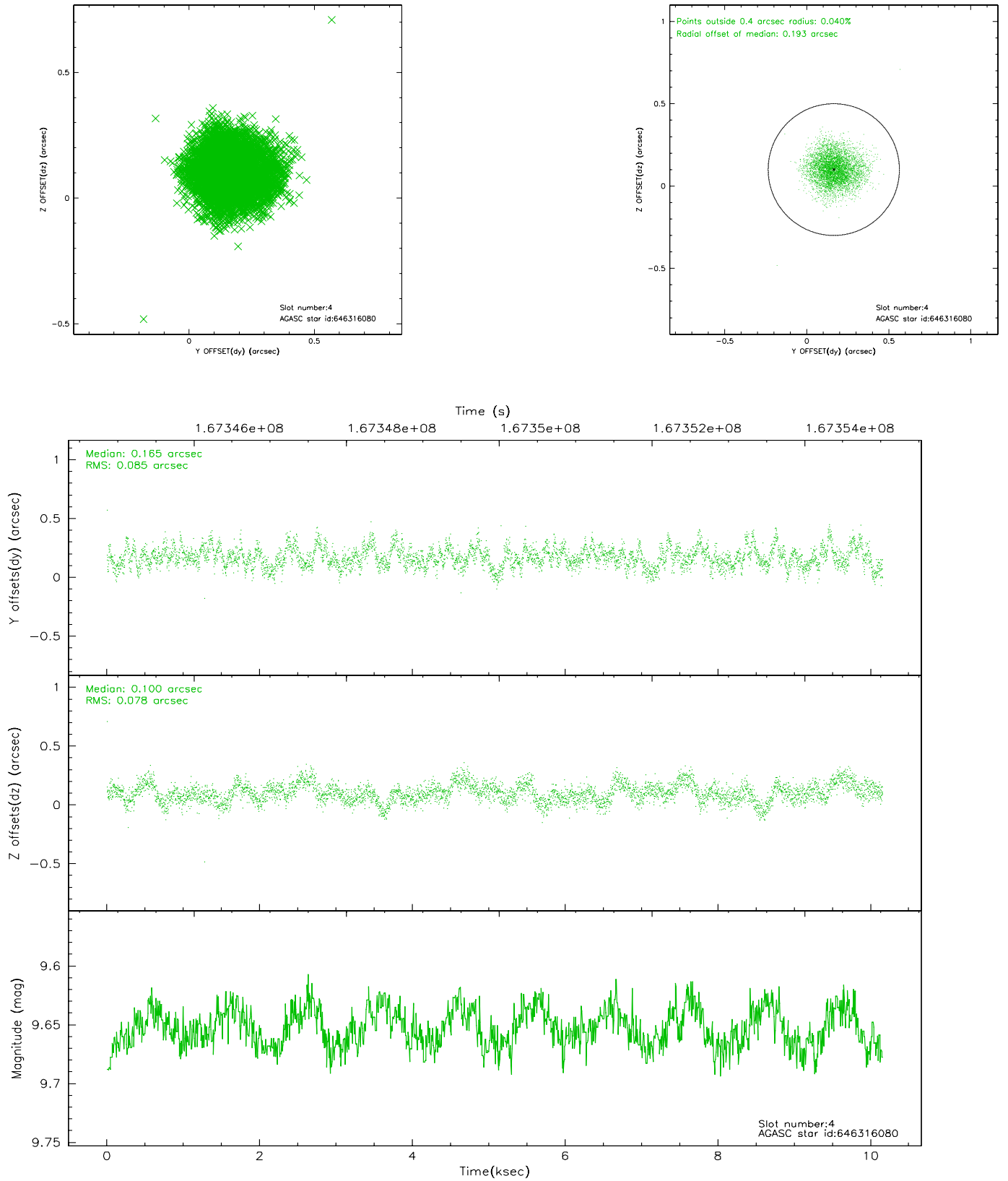
slot	status	id	mag	n_pts	med_dy	med_dz	dr1	dr2	ra	dec	mean_y	mean_z
0	FID	ACIS-S-2	7.12	2476	-0.026	0.020	0.007	0.011	0.000000	0.000000	-755.51	-1727.86
1	FID	ACIS-S-4	7.21	2477	-0.025	0.007	0.005	0.009	0.000000	0.000000	2157.50	180.12
2	FID	ACIS-S-5	7.24	2477	0.020	-0.018	0.006	0.010	0.000000	0.000000	-1807.67	174.30
3	BAD	646193472	10.46	4608	-0.564	0.238	0.168	0.265	174.931034	-2.060228	1633.99	-808.81
4	GUIDE	646316080	9.65	4950	0.165	0.100	0.124	0.195	175.658524	-2.434808	2086.31	2100.78
5	GUIDE	646323688	9.92	4946	0.208	-0.203	0.114	0.186	175.182675	-1.523064	-486.58	-560.64
6	GUIDE	646324808	8.39	4953	0.120	-0.022	0.062	0.099	175.125728	-1.837660	652.11	-397.44
7	GUIDE	646322952	9.77	4952	0.022	-0.094	0.134	0.224	175.354154	-1.823942	345.72	366.65

2.4 Star Slots

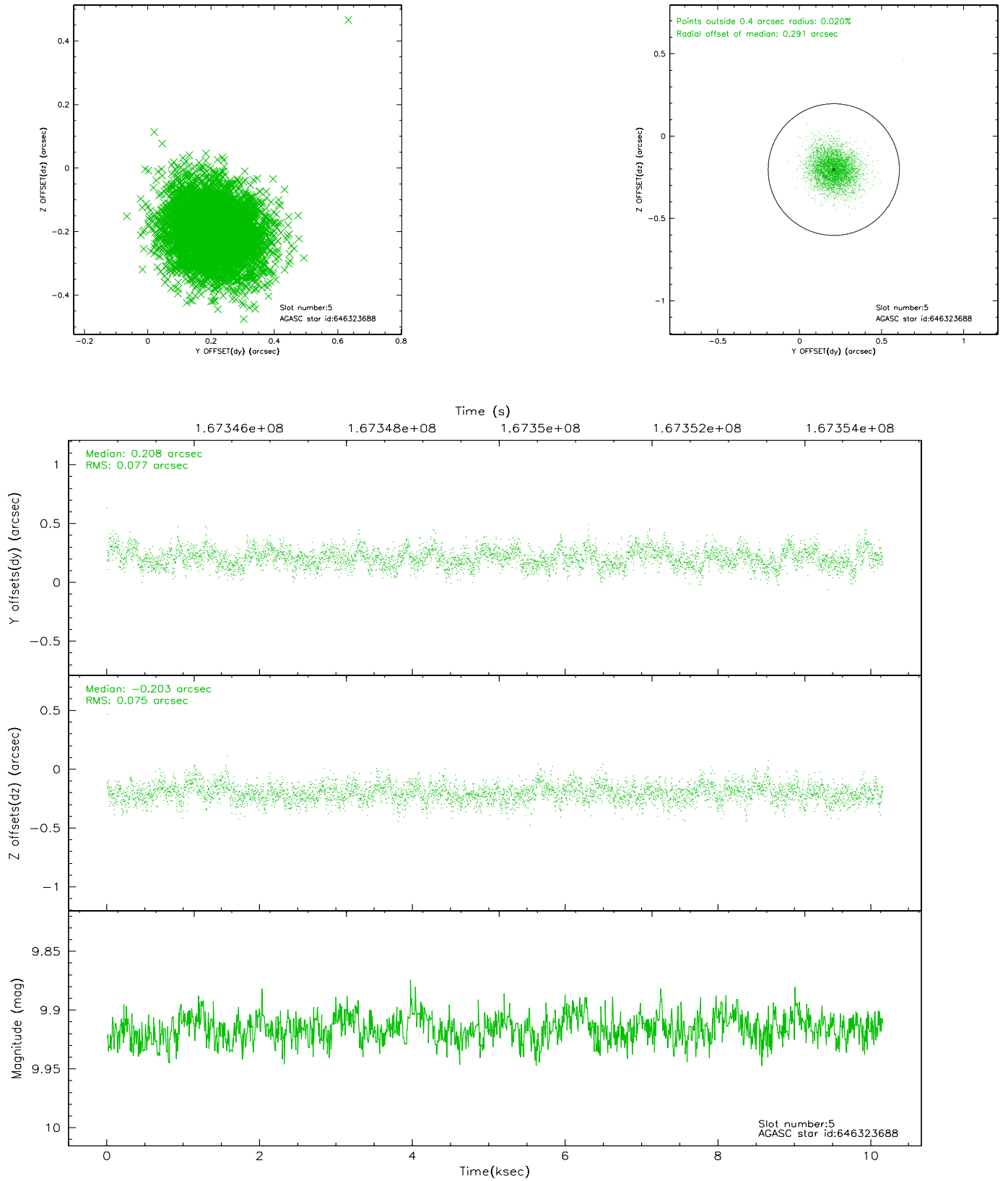
2.4.1 Slot 3



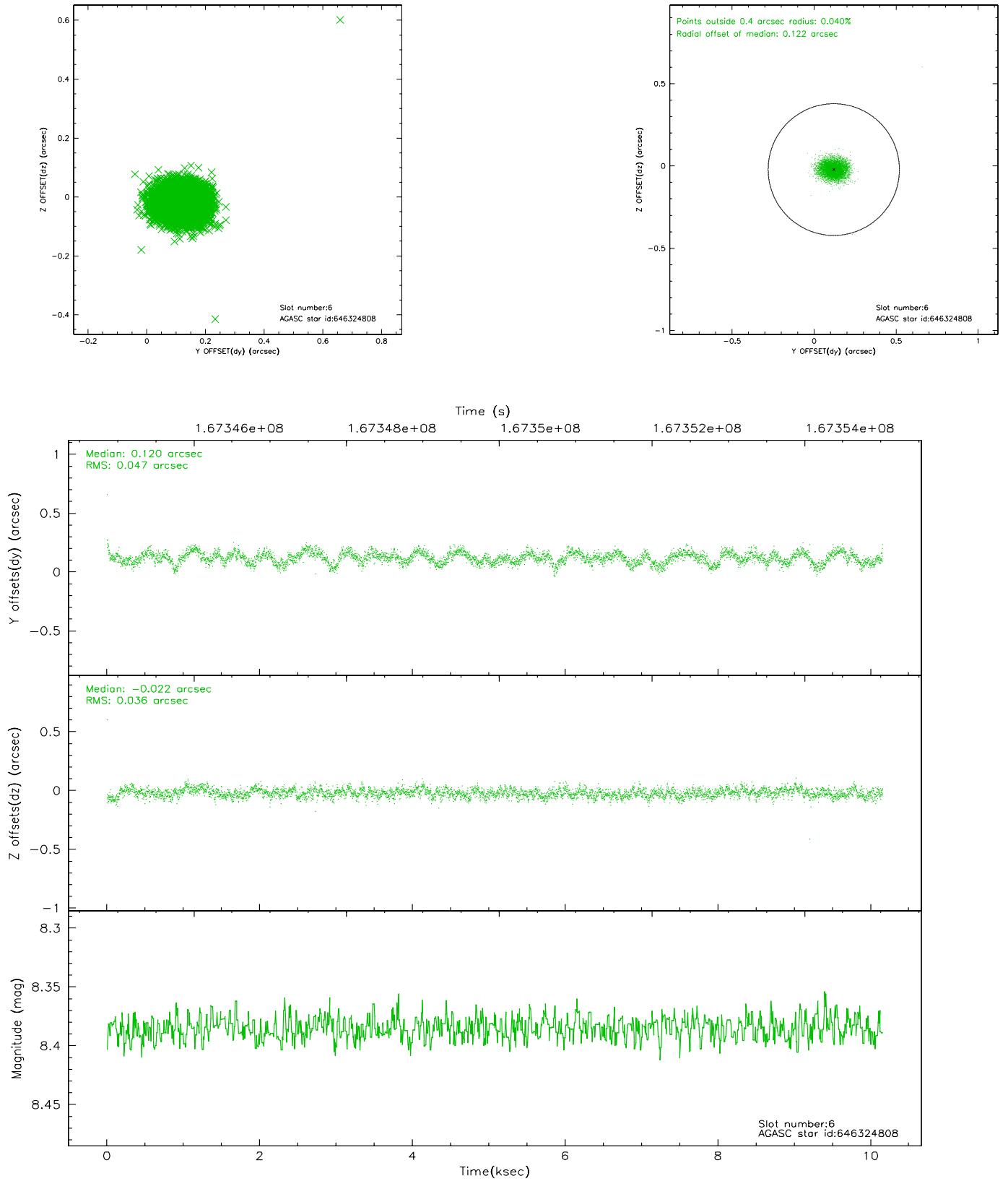
2.4.2 Slot 4



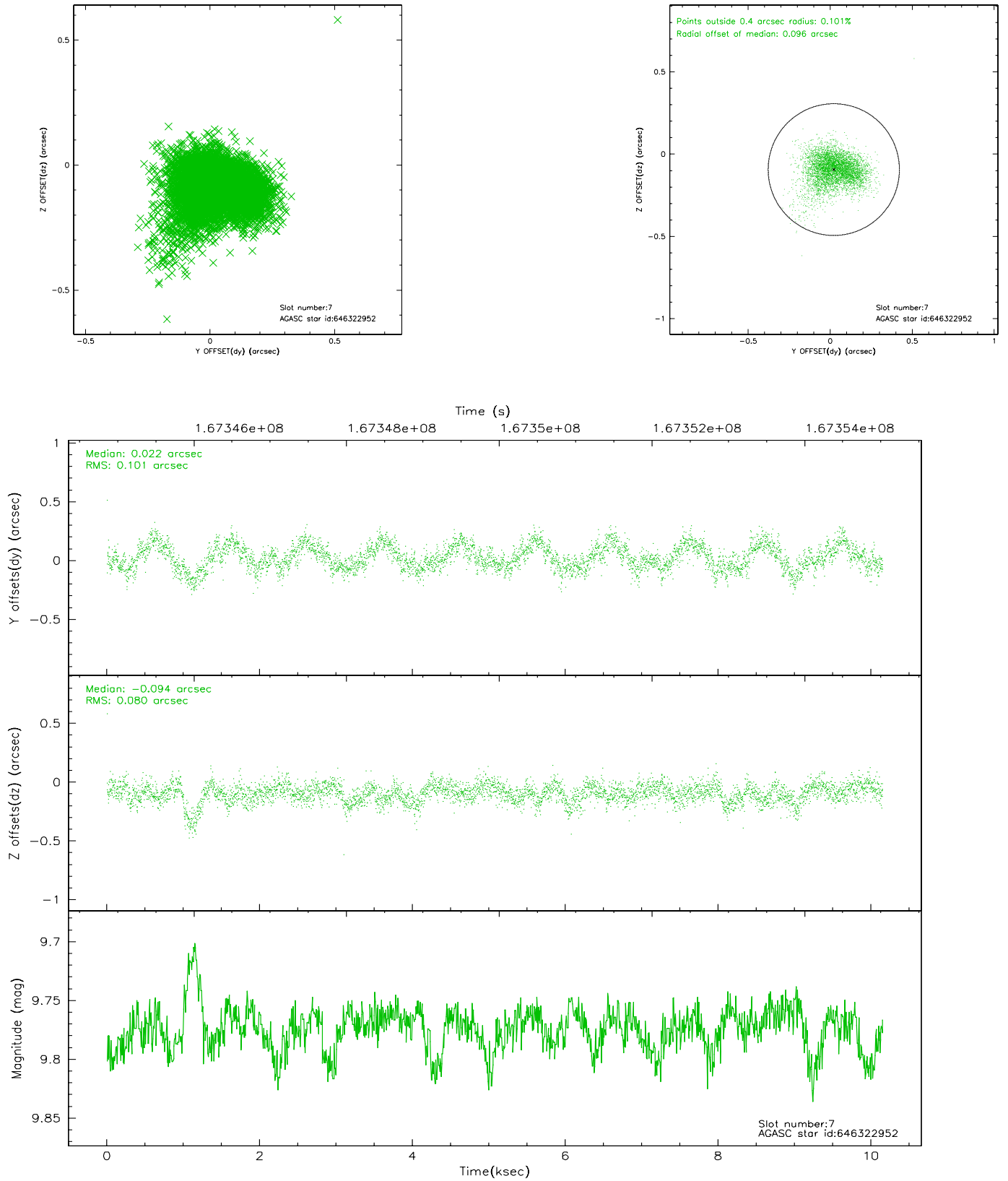
2.4.3 Slot 5



2.4.4 Slot 6

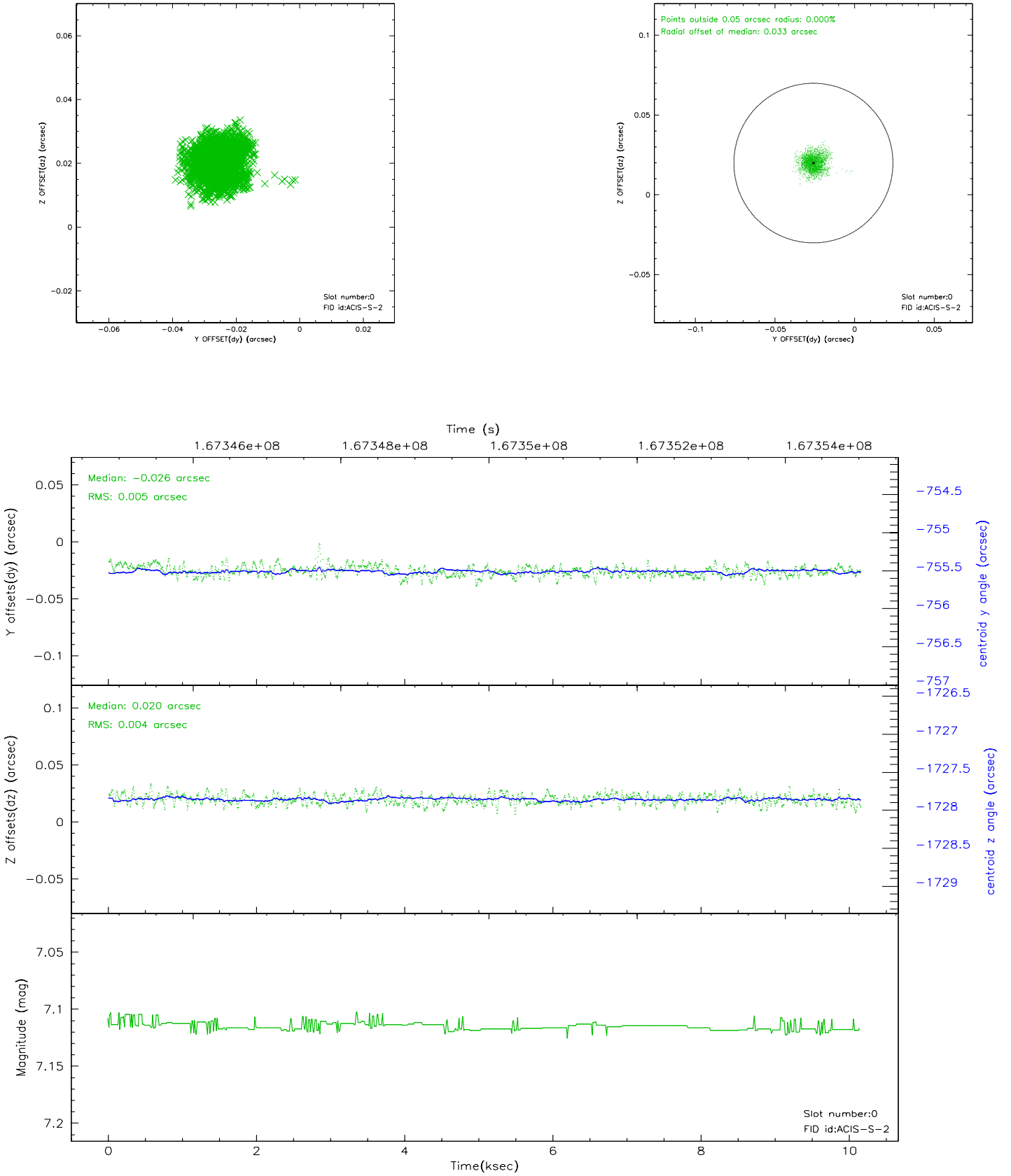


2.4.5 Slot 7

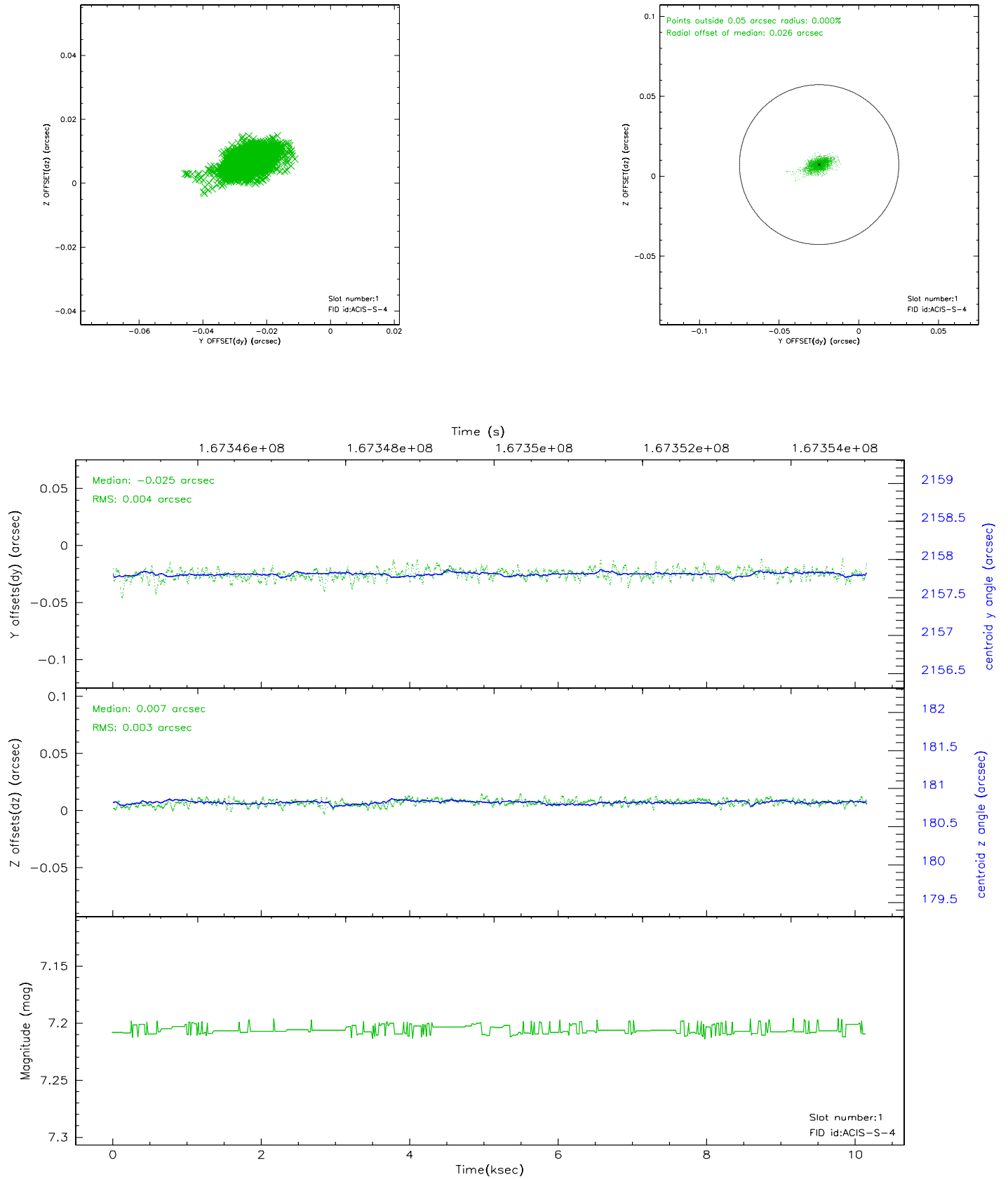


2.5 FID Slots

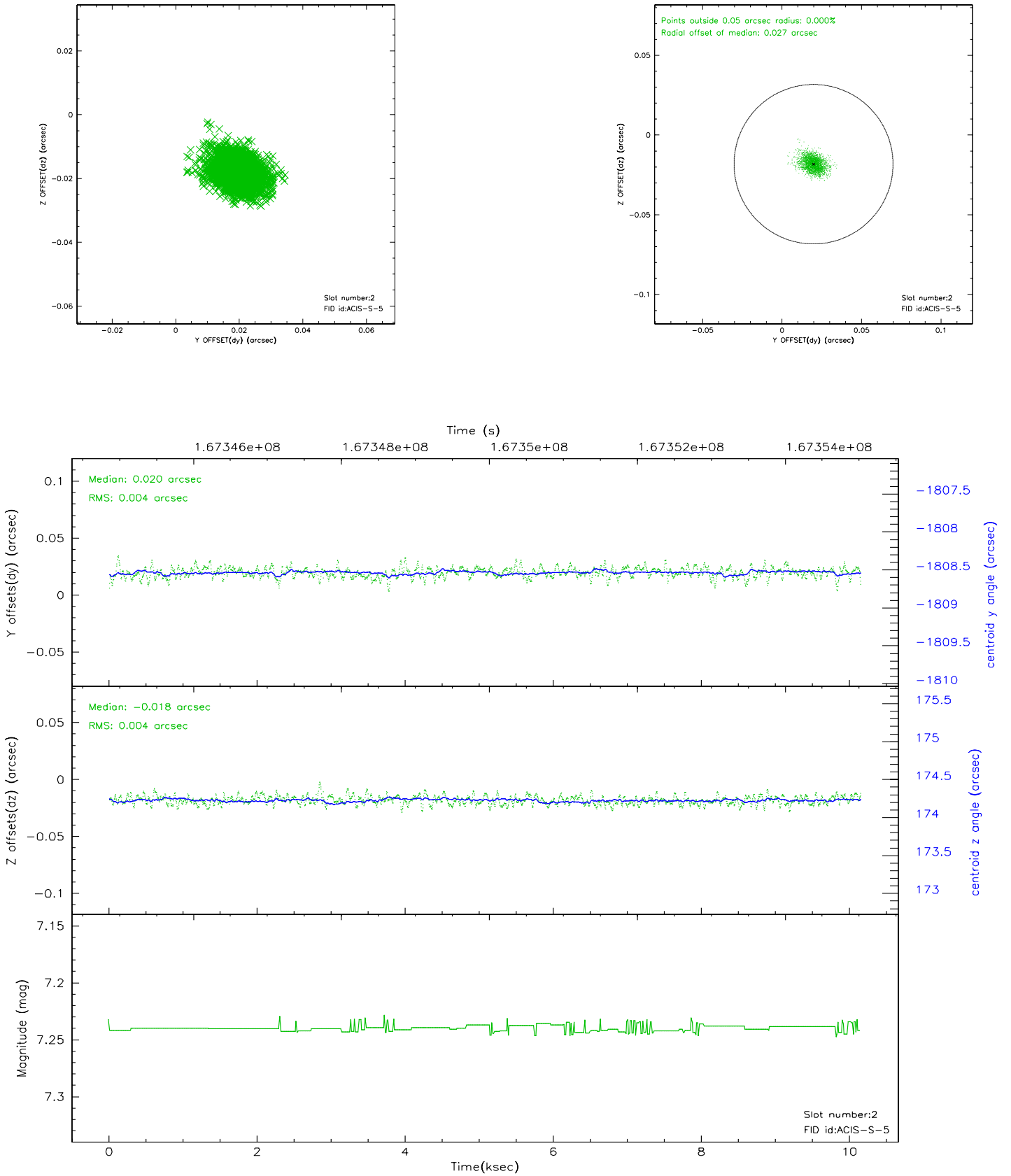
2.5.1 Slot 0



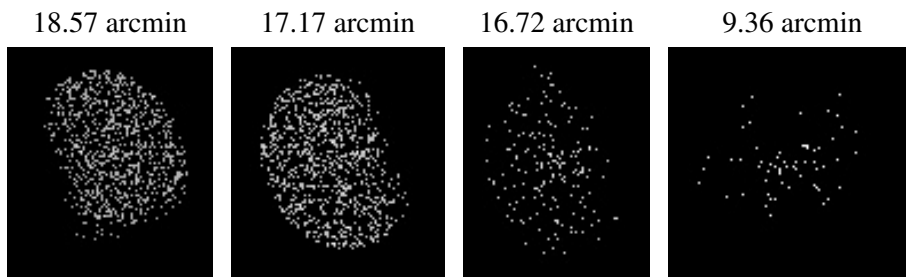
2.5.2 Slot 1



2.5.3 Slot 2



3 Point Sources



A Summary

A.1 Status

V&V Scientist	Beth Sundheim
V&V Date (YYYY-MM-DD)	2006.08.06
V&V Edition	1
V&V Disposition and Status	OK
V&V Charge Time	10.15

A.2 Comments

Slot 3 was excluded from aspect solution.