

# V&V Reference Report

## L2 ASCDS Version : 8.4.5

Observation 4143 - L2 Version 3  
Chandra X-Ray Center

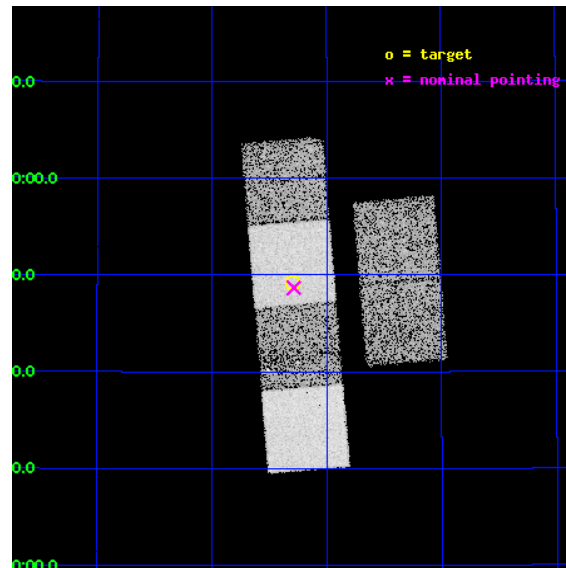
L2 Processing Date : Nov 1 2012

## Contents

<b>1</b>	<b>Front</b>	<b>2</b>
<b>2</b>	<b>OBI</b>	<b>3</b>
2.1	OBI . . . . .	3
2.1.1	Images . . . . .	3
2.1.2	Bias . . . . .	3
2.1.3	Parameters . . . . .	4
2.1.4	Events . . . . .	4
2.2	Compared Parameters . . . . .	5
2.3	Aspect . . . . .	6
2.4	Star Slots . . . . .	9
2.4.1	Slot 3 . . . . .	9
2.4.2	Slot 4 . . . . .	10
2.4.3	Slot 5 . . . . .	11
2.4.4	Slot 6 . . . . .	12
2.4.5	Slot 7 . . . . .	13
2.5	FID Slots . . . . .	14
2.5.1	Slot 0 . . . . .	14
2.5.2	Slot 1 . . . . .	15
2.5.3	Slot 2 . . . . .	16
<b>A</b>	<b>Summary</b>	<b>17</b>
A.1	Status . . . . .	17
A.2	Comments . . . . .	17

# 1 Front

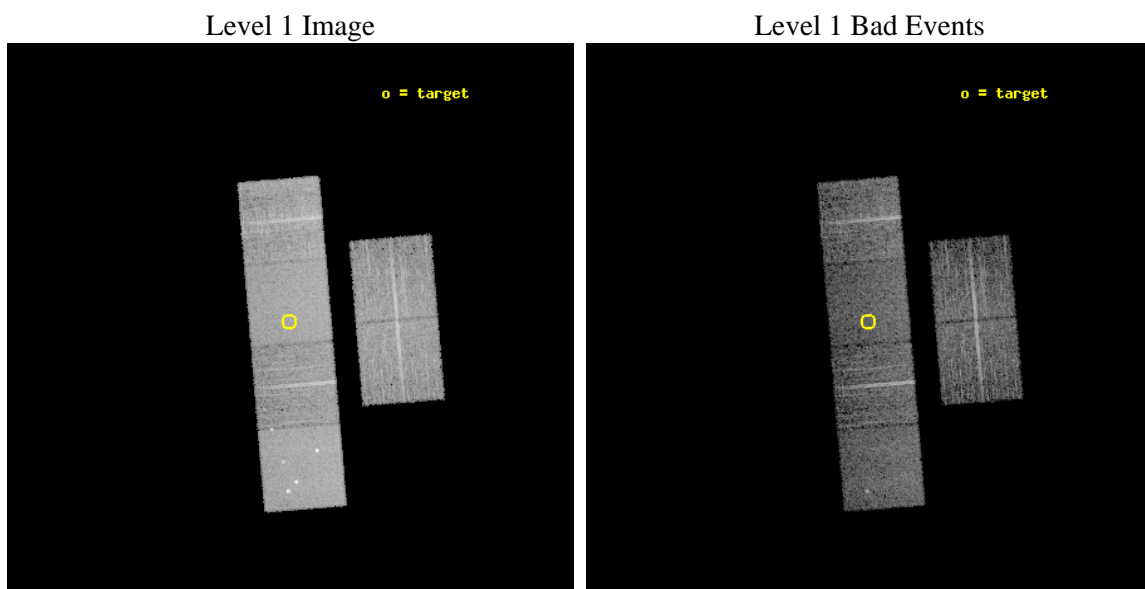
seq_num	700822	Sequence number
obs_id	4143	Observation id
title	OBSCURED HIGH REDSHIFT RADIO GALAXIES	Proposal title
observer	Wil van Bruegel	Principal investigator
object	J1314+3649	Source name
dtcycle	0	&#160
cycle	P	events from which exps? Prim/Second/Both
ra_targ	198.574583	Observer's specified target RA [deg]
dec_targ	36.820722	Observer's specified target Dec [deg]
ra_nom	198.5714762653	Nominal RA [deg]
dec_nom	36.81133868728	Nominal Dec [deg]
roll_nom	265.16933999424	Nominal Roll [deg]
revision	3	Processing version of data
ontime	9032.4749776125	Sum of GTIs [s]
liveltime	8918.1003407425	Livetime [s]
ontime2	9032.5160176158	Sum of GTIs [s]
ontime3	9032.3518576026	Sum of GTIs [s]
ontime5	9032.4339376092	Sum of GTIs [s]
ontime6	9032.3928976059	Sum of GTIs [s]
ontime7	9032.4749776125	Sum of GTIs [s]
ontime8	9032.3108176291	Sum of GTIs [s]
l2events	88894	Number of level 2 events



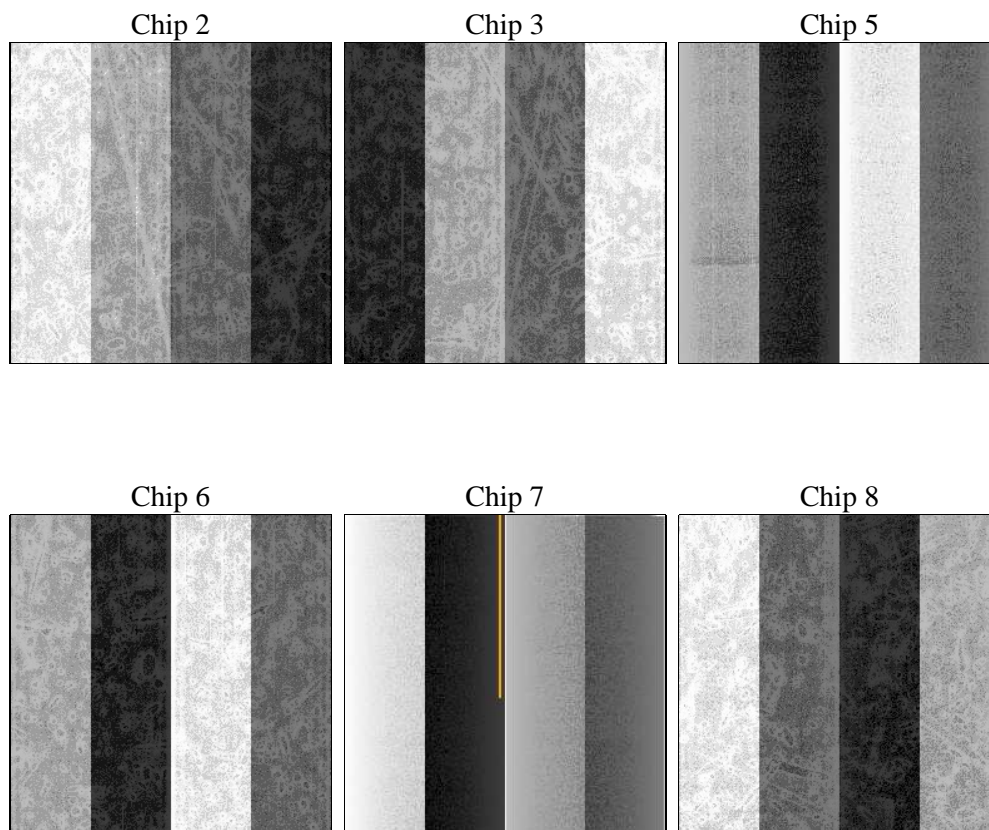
## 2 OBI

### 2.1 OBI

#### 2.1.1 Images



#### 2.1.2 Bias



### 2.1.3 Parameters

obi_num	0	Obi number	sched_exp_time	9068.000000	[s] Scheduled observation exposure time
ascdsver	8.4.5	Processing system revision	ontime	9032.4749776125	Sum of GTIs [s]
caldsver	4.5.2	&#160	ontime2	9032.5160176158	Sum of GTIs [s]
date	2012-11-01T10:36:21	Date and time of file creation	ontime3	9032.3518576026	Sum of GTIs [s]
revision	3	Processing version of data	ontime5	9032.4339376092	Sum of GTIs [s]
			ontime6	9032.3928976059	Sum of GTIs [s]
			ontime7	9032.4749776125	Sum of GTIs [s]
			ontime8	9032.3108176291	Sum of GTIs [s]
			l1events	398735	Number of level 1 events

### 2.1.4 Events

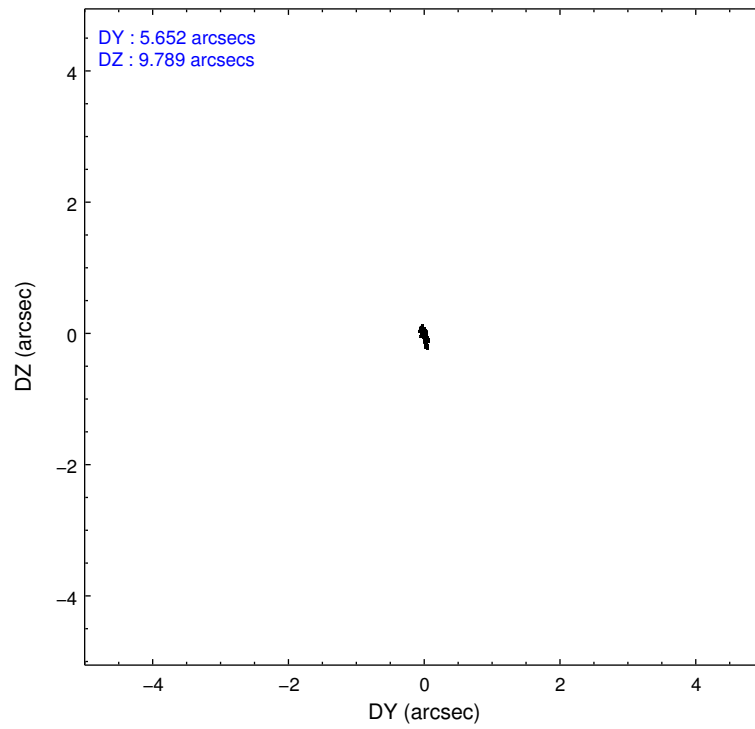
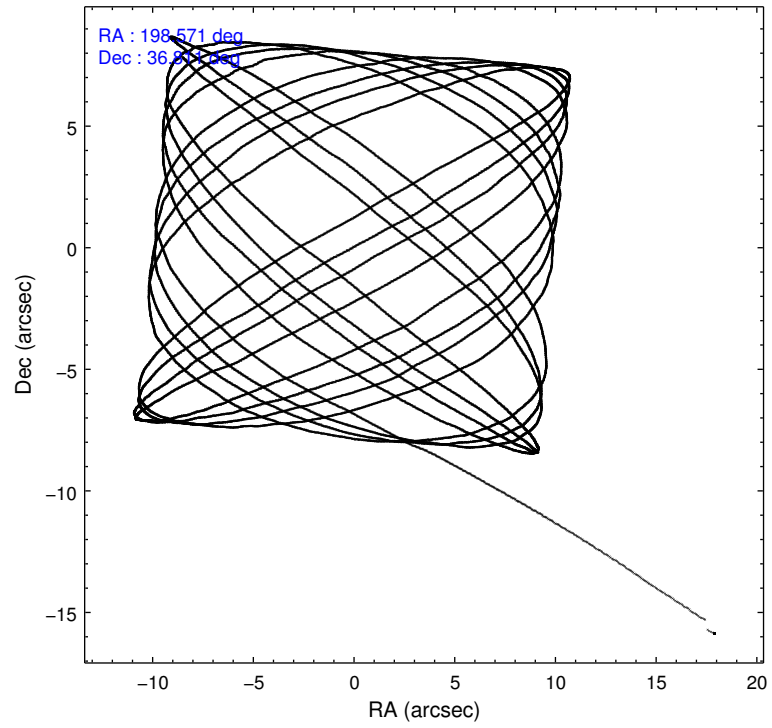
	ccd 2	ccd 3	ccd 5	ccd 6	ccd 7	ccd 8		ccd 2	ccd 3	ccd 5	ccd 6	ccd 7	ccd 8
level 1 events	56968	54903	84582	55365	73826	73091	grade 0 events	3062	2916	6047	2861	2795	5292
rejected events	50085	48138	44867	48445	43403	56645		5%	5%	7%	5%	3%	7%
rejected %	87%	87%	53%	87%	58%	77%	grade 1 events	36	47	139	28	73	49
								0%	0%	0%	0%	0%	0%
							grade 2 events	1464	1350	11295	1415	5976	3439
								2%	2%	13%	2%	8%	4%
							grade 3 events	668	637	1563	668	2741	1897
								1%	1%	1%	1%	3%	2%
							grade 4 events	557	635	1449	632	2692	1747
								0%	1%	1%	1%	3%	2%
							grade 5 events	2170	2405	6020	2576	7045	3315
								3%	4%	7%	4%	9%	4%
							grade 6 events	1133	1229	19377	1345	16228	4072
								1%	2%	22%	2%	21%	5%
							grade 7 events	47878	45684	38692	45840	36276	53280
								84%	83%	45%	82%	49%	72%

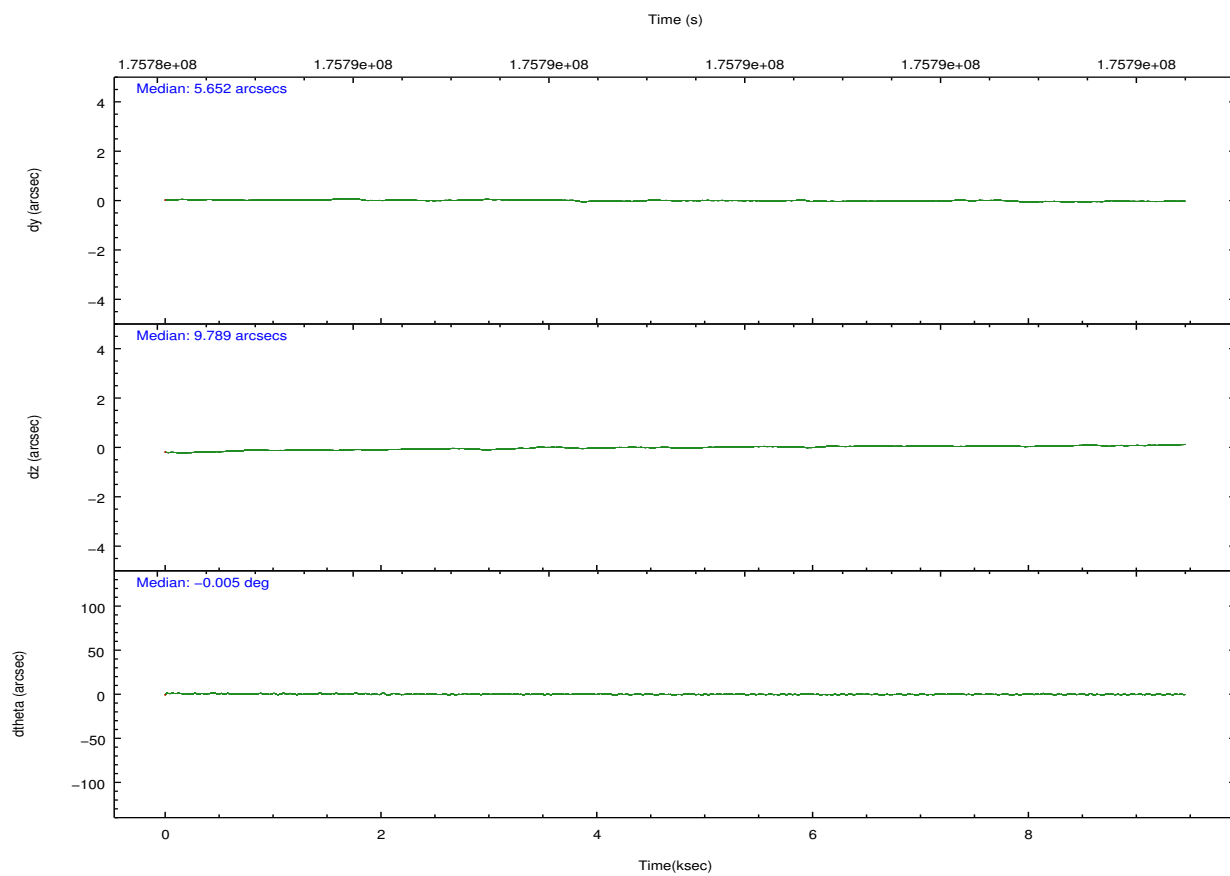
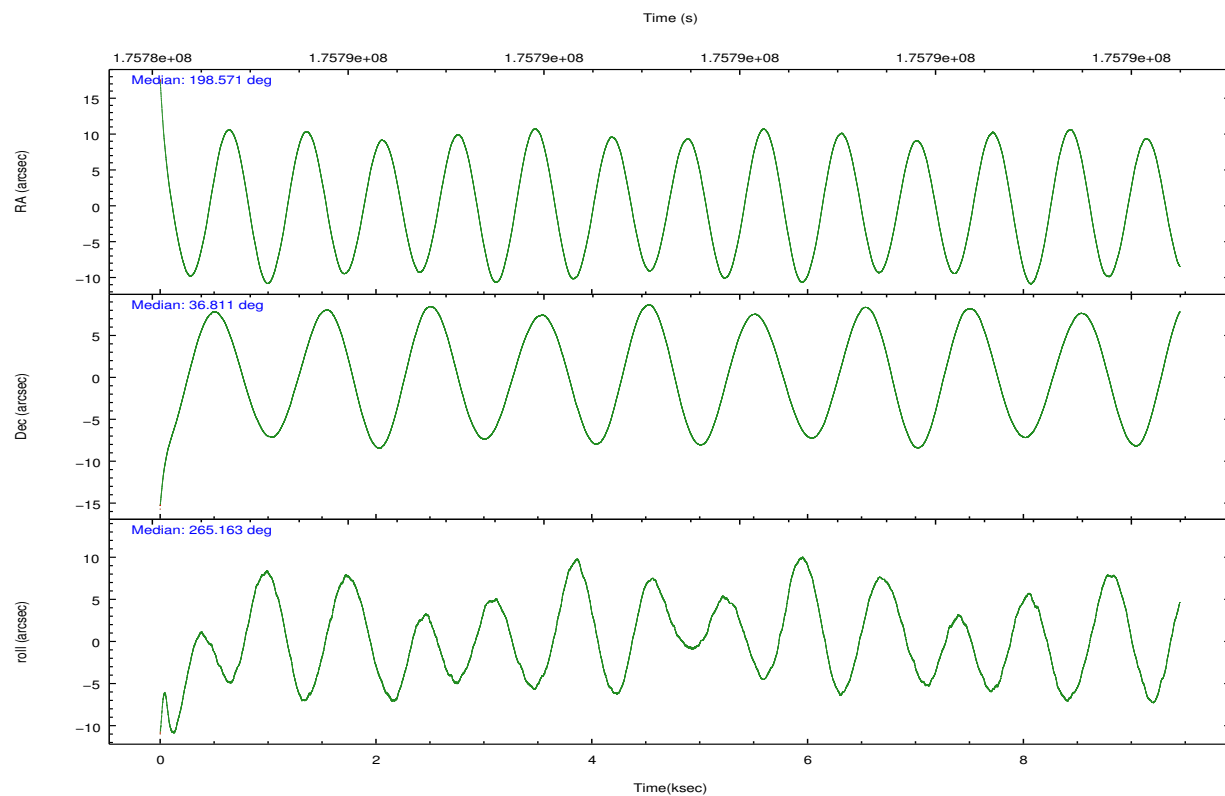


## 2.2 Compared Parameters

Parameter	Planned	Actual	Parameter	Planned	Actual
Instrument	ACIS	ACIS	Obspar format version number	7	7
Detector	ACIS-235678	ACIS-235678	Obspar file type	PREDICTED	ACTUAL
Grating	NONE	NONE	Obspar update status	NONE	UPDATED
Data mode	FAINT	FAINT	Number of optional ACIS chips dropped	0	0
Observation mode	POINTING	POINTING	On-chip summing requested	N	N
[deg] Pointing RA	198.556587	198.5714762653041	Subarray requested	NONE	NONE
[deg] Pointing Dec	36.835871	36.81133868727974	Alternating exposures requested	N	N
[deg] Pointing Roll	265.021630	265.1693399942405	[s] Primary exposure time	0.000000	3.2
[mm] SIM focus pos	-0.684267	-0.6828225247311905			
[mm] SIM defocus	0	0.001444936568705701			
[mm] SIM translation stage pos	-190.132523	-190.1425803651734			
[mm] SIM translation stage offset	0	0.01005778216563158			
[s] Observation start time (MET)	175784944.184000	175783880.62823			
Observation start date	2003-07-28T13:08:00	2003-07-28T12:51:20			
[s] Observation end time (MET)	175794012.184000	175794514.49118			
Observation end date	2003-07-28T15:39:08	2003-07-28T15:48:34			
Read mode	TIMED	TIMED			

## 2.3 Aspect



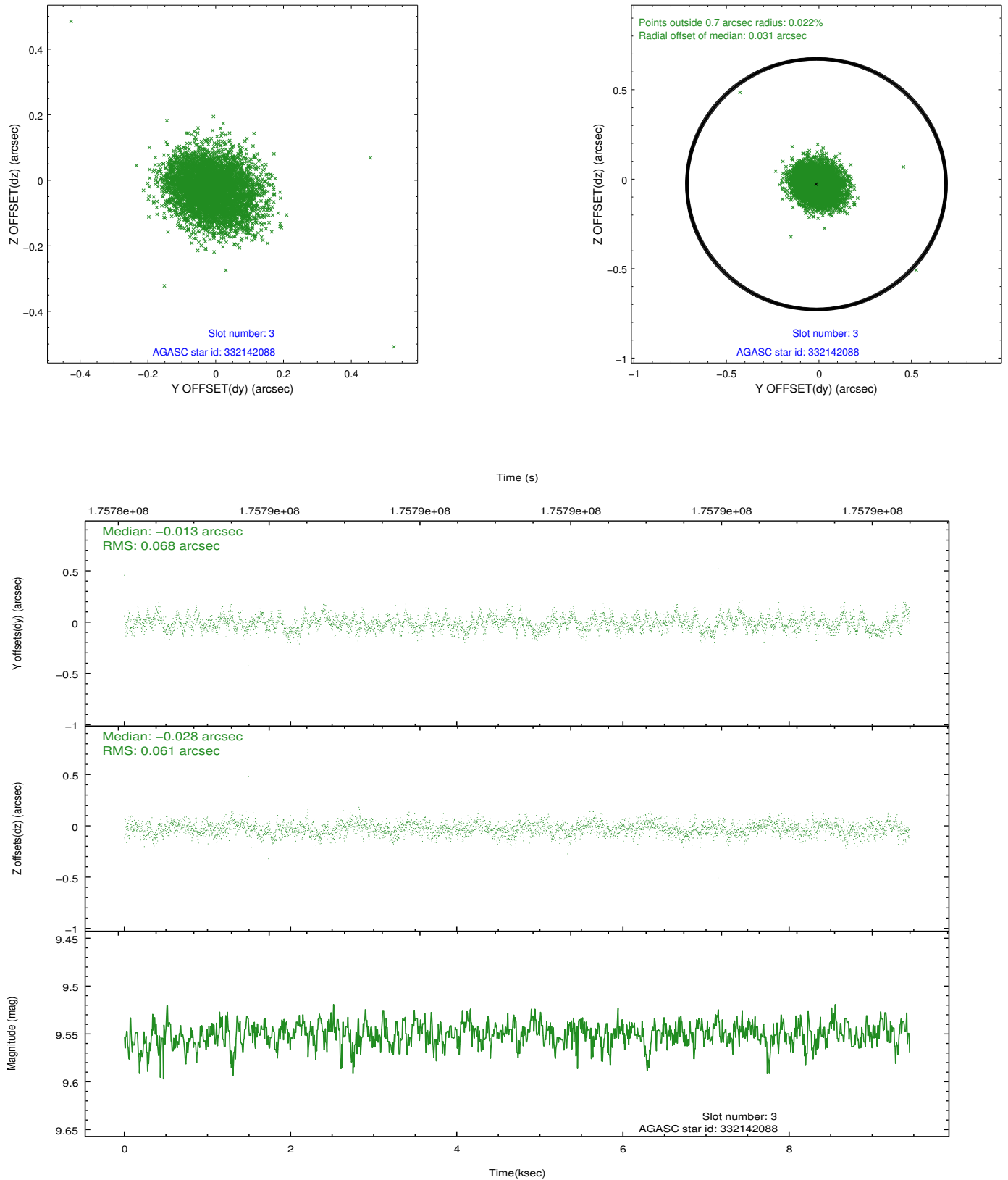


### Slot Statistics

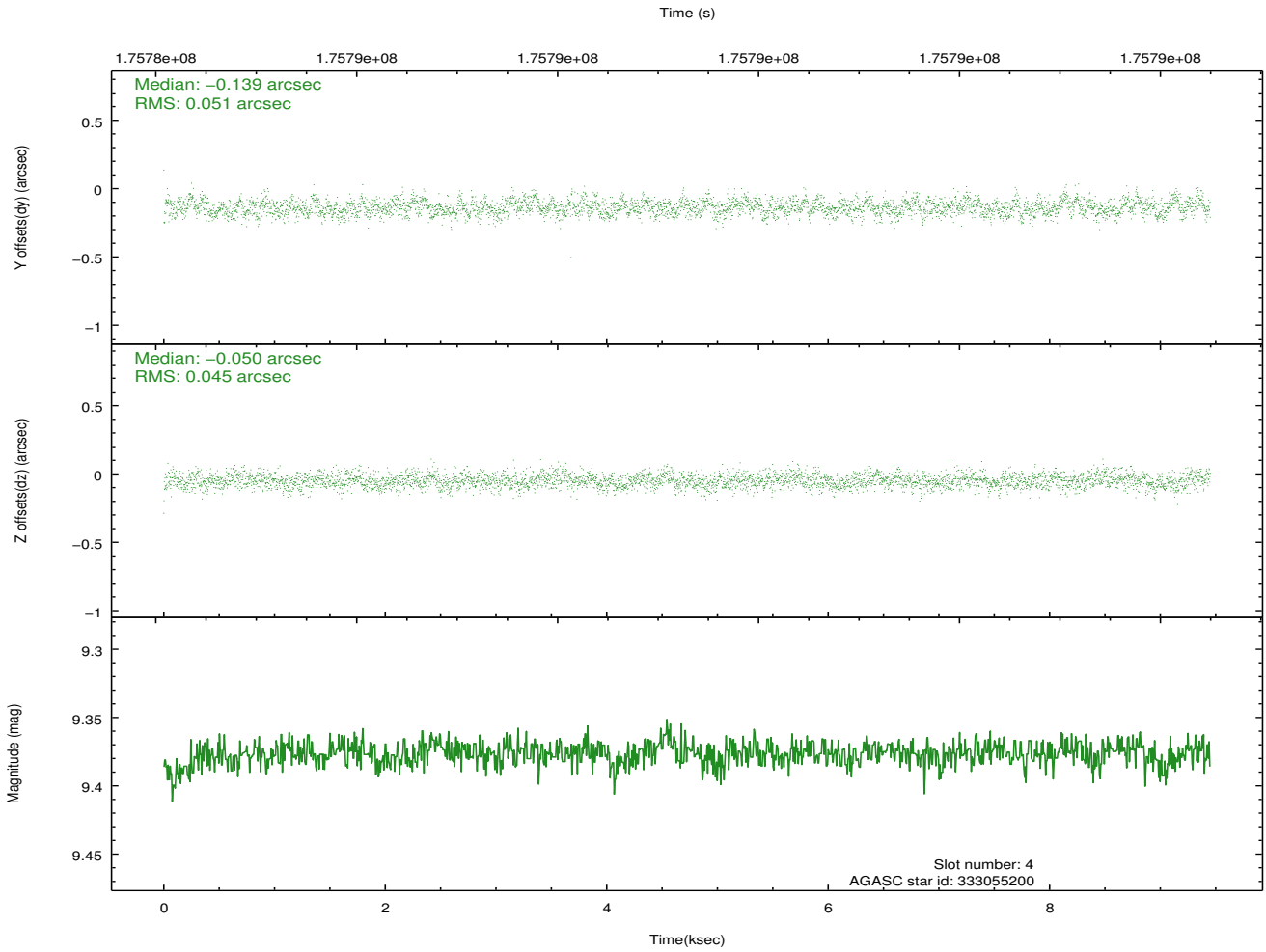
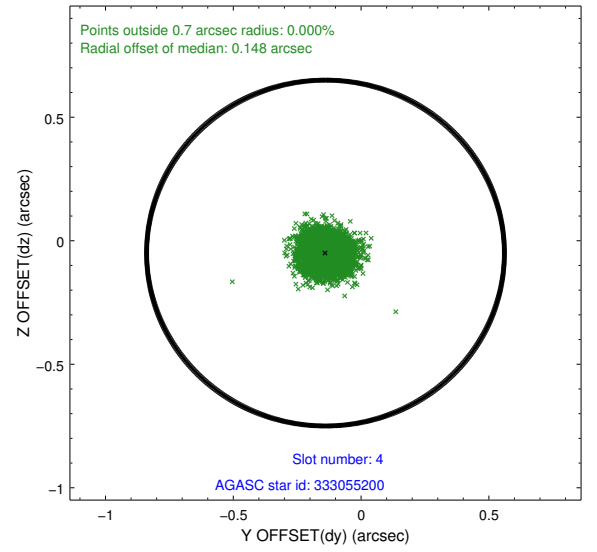
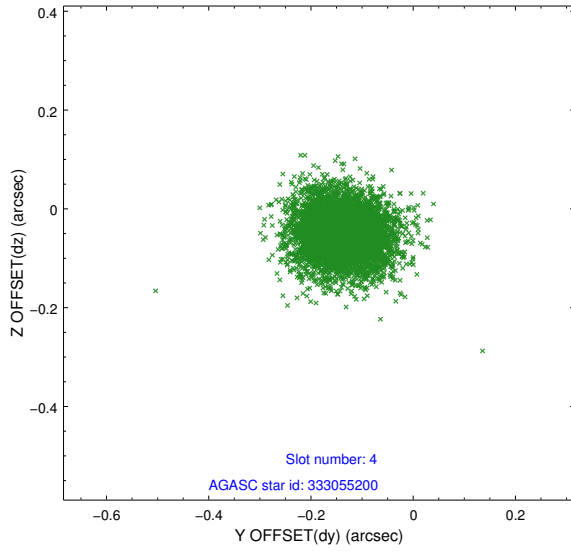
slot	status	id	mag	n_pts	med_dy	med_dz	dr1	dr2	ra	dec	mean_y	mean_z
0	FID	ACIS-S-2	7.10	2305	-0.066	-0.038	0.007	0.011	0.000000	0.000000	-758.41	-1731.01
1	FID	ACIS-S-4	7.20	2306	0.098	0.042	0.005	0.009	0.000000	0.000000	2154.75	177.00
2	FID	ACIS-S-5	7.23	2306	-0.063	0.005	0.007	0.012	0.000000	0.000000	-1810.54	171.24
3	GUIDE	332142088	9.55	4609	-0.013	-0.028	0.097	0.154	197.774037	36.602770	1023.72	-2180.93
4	GUIDE	333055200	9.38	4606	-0.139	-0.050	0.072	0.116	198.276568	37.376986	-1871.72	-967.98
5	GUIDE	333055808	8.84	4610	-0.043	0.054	0.062	0.101	198.883758	36.599554	763.88	1015.80
6	GUIDE	333058176	8.83	4611	0.157	0.156	0.075	0.123	199.176915	36.381304	1468.97	1933.24
7	GUIDE	333059040	9.83	4608	0.040	-0.130	0.092	0.150	198.328354	36.958640	-383.29	-692.22

## 2.4 Star Slots

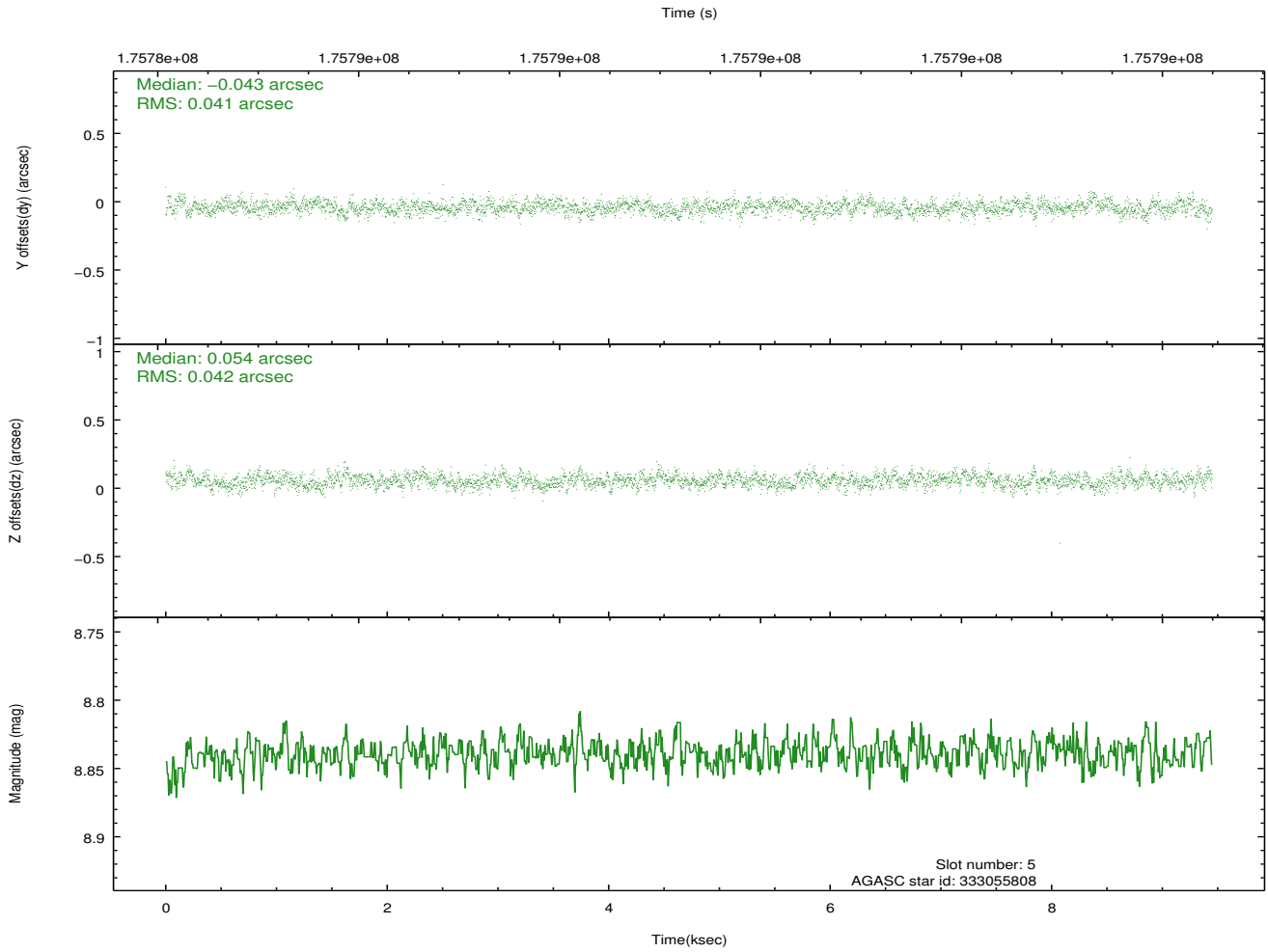
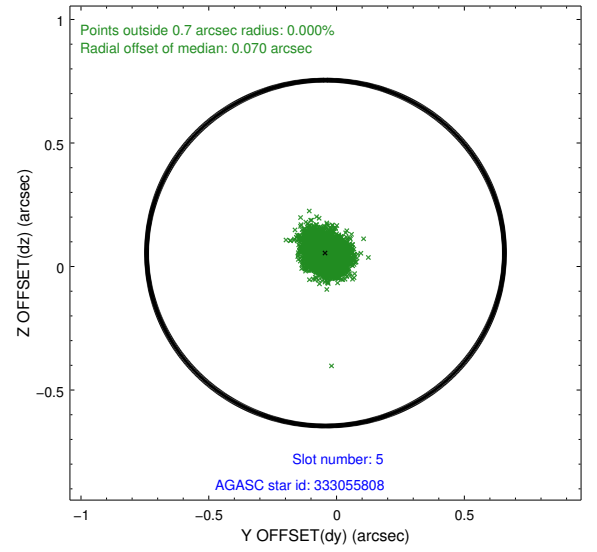
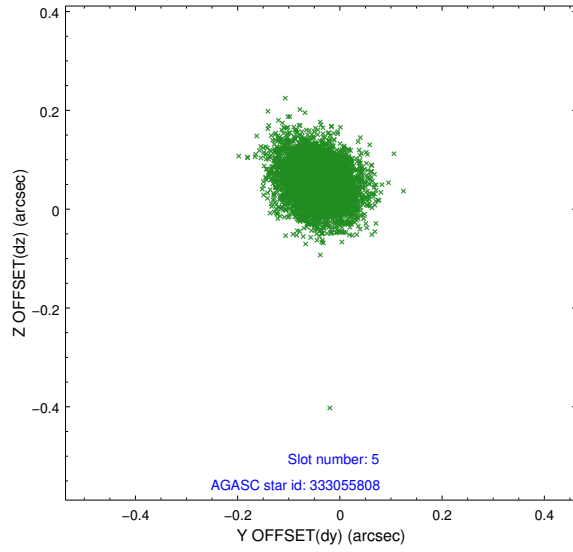
### 2.4.1 Slot 3



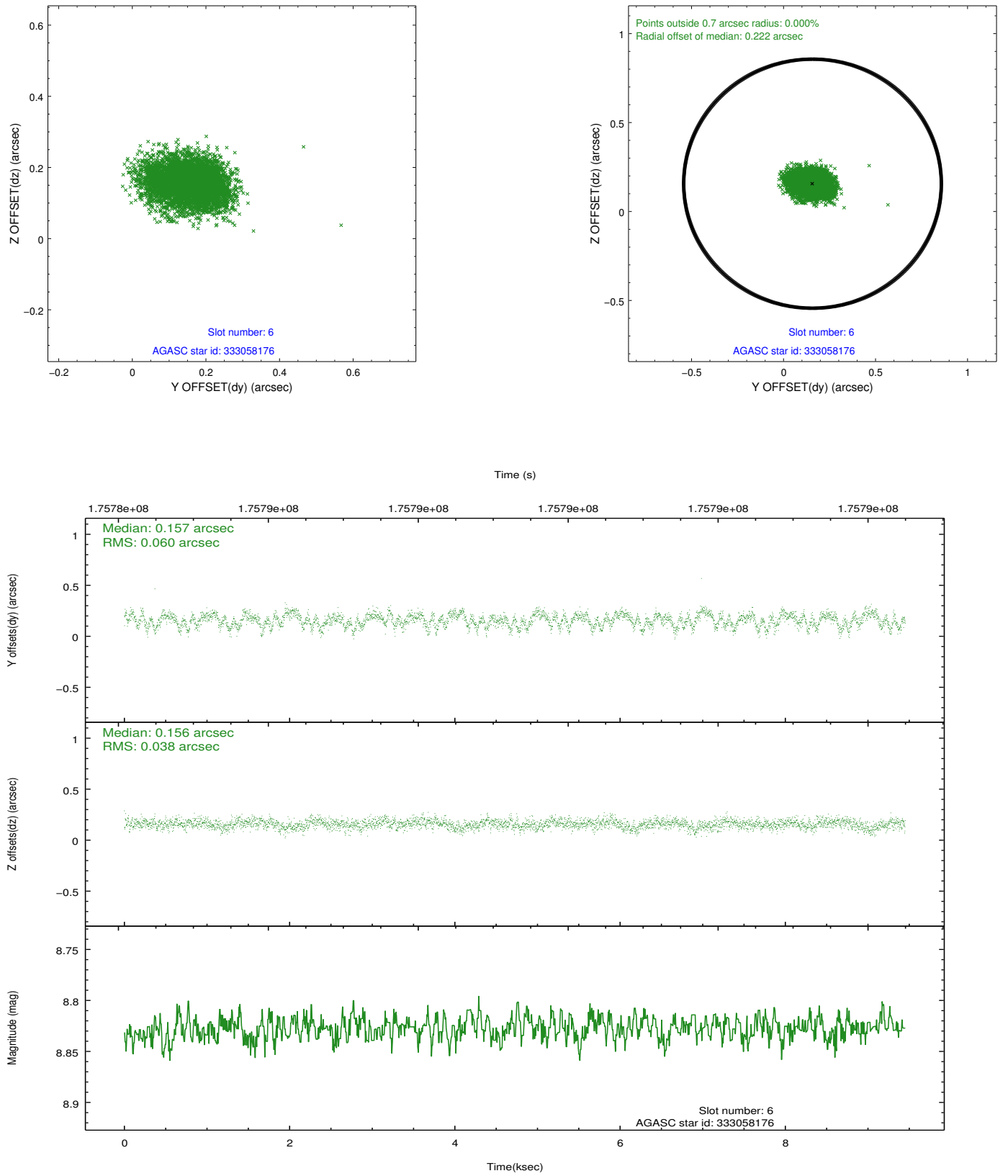
## 2.4.2 Slot 4



### 2.4.3 Slot 5

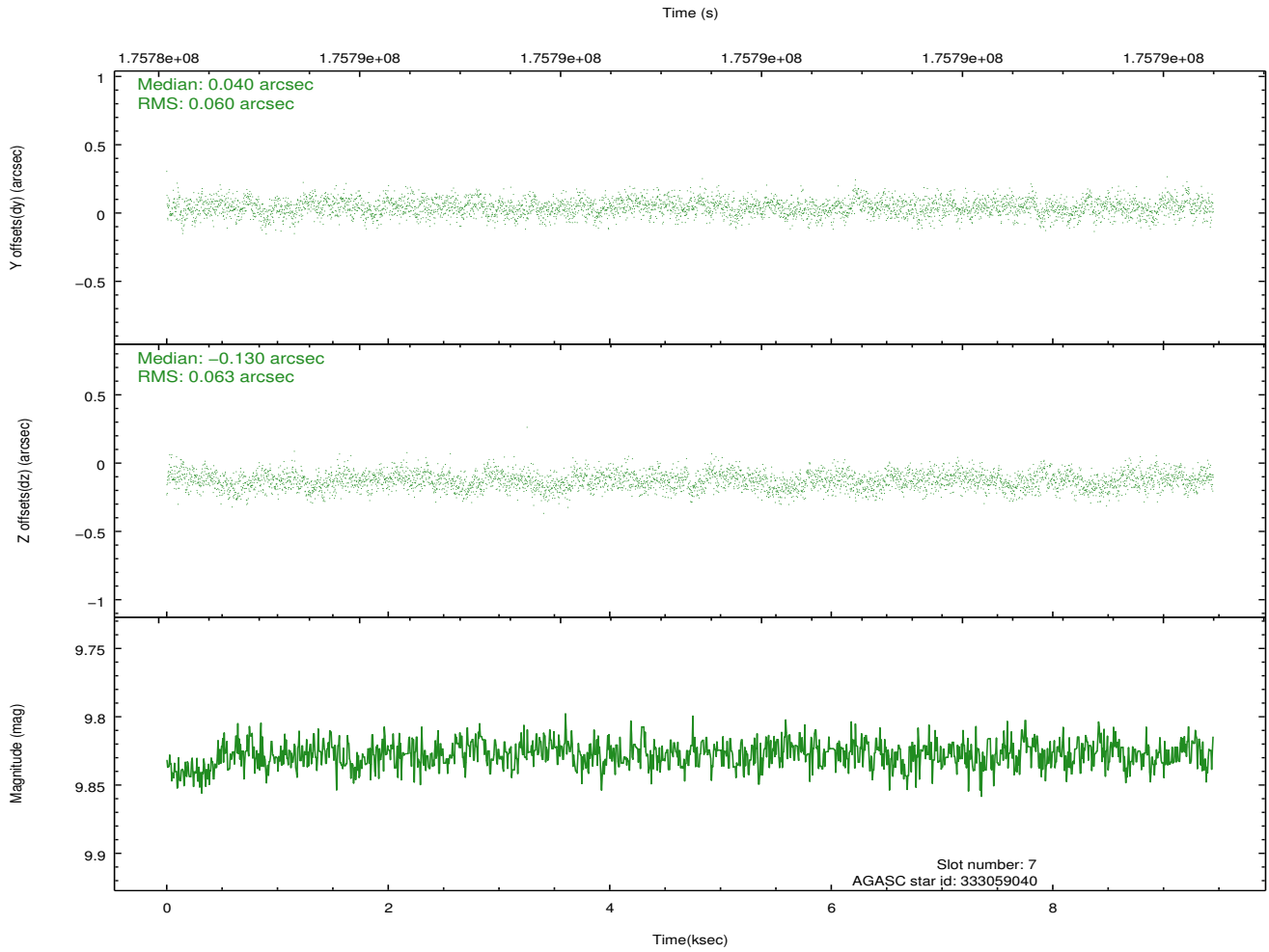
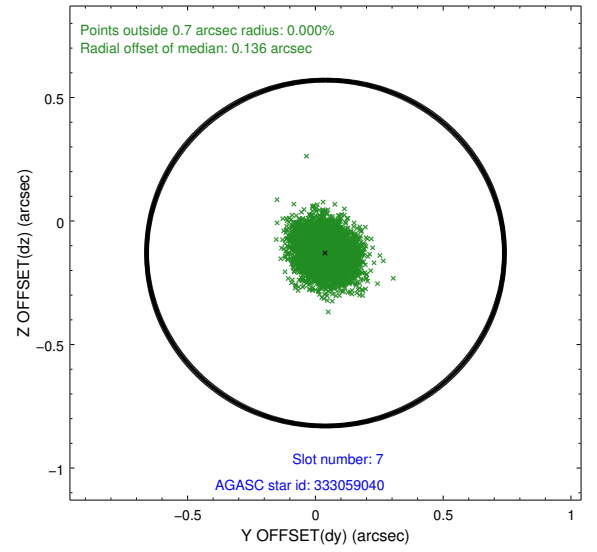
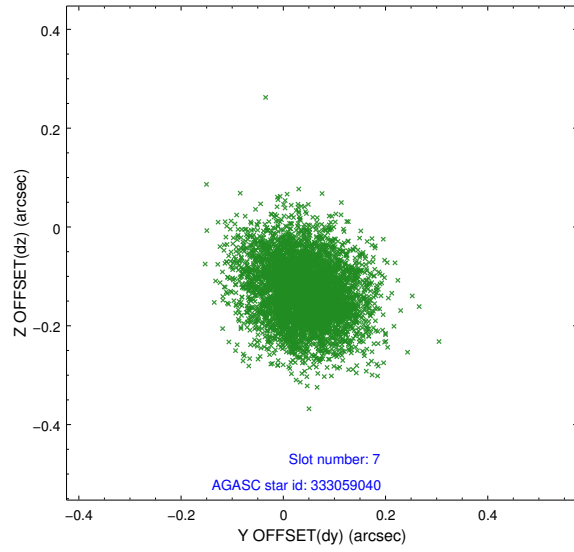


## 2.4.4 Slot 6



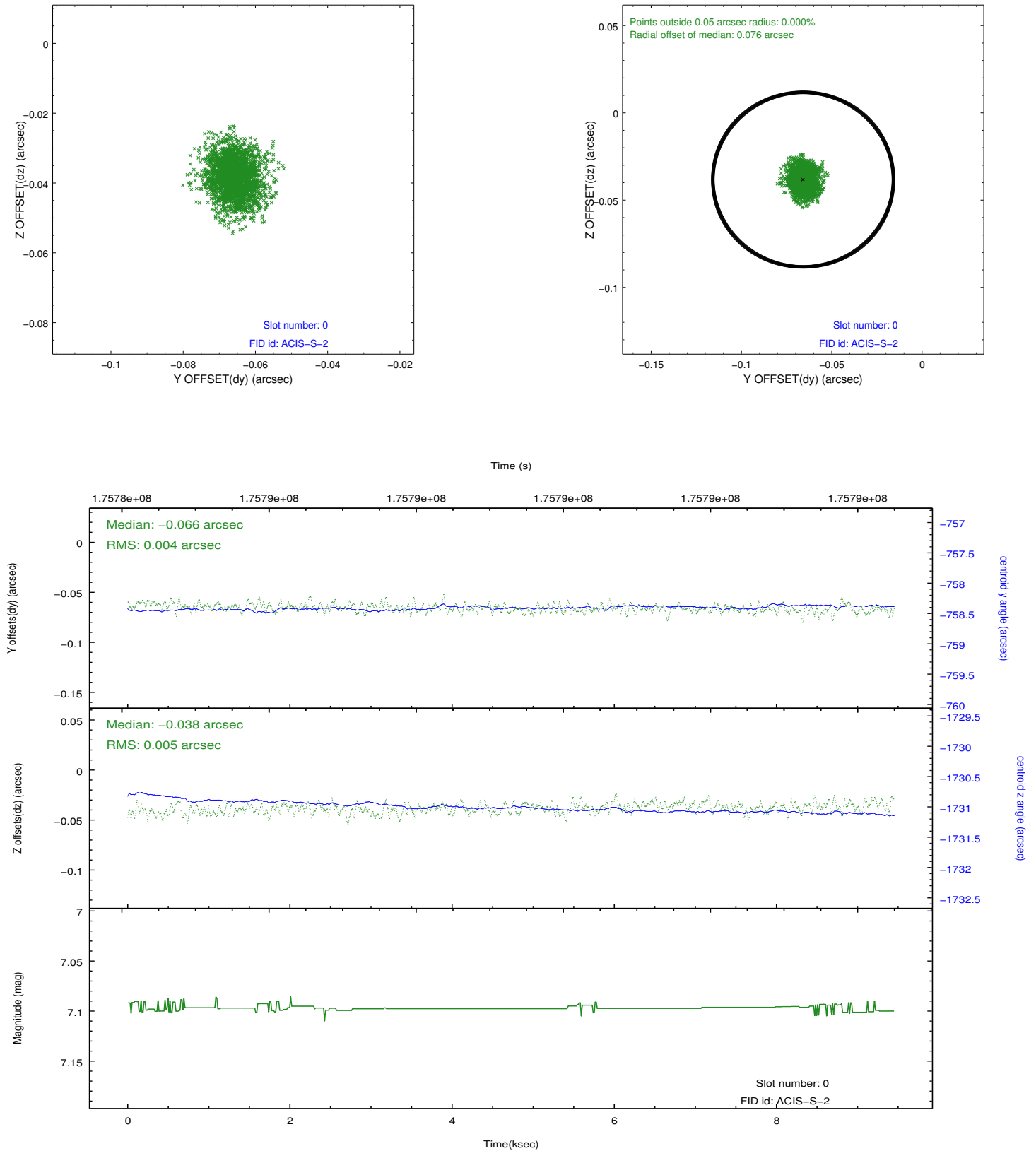


## 2.4.5 Slot 7

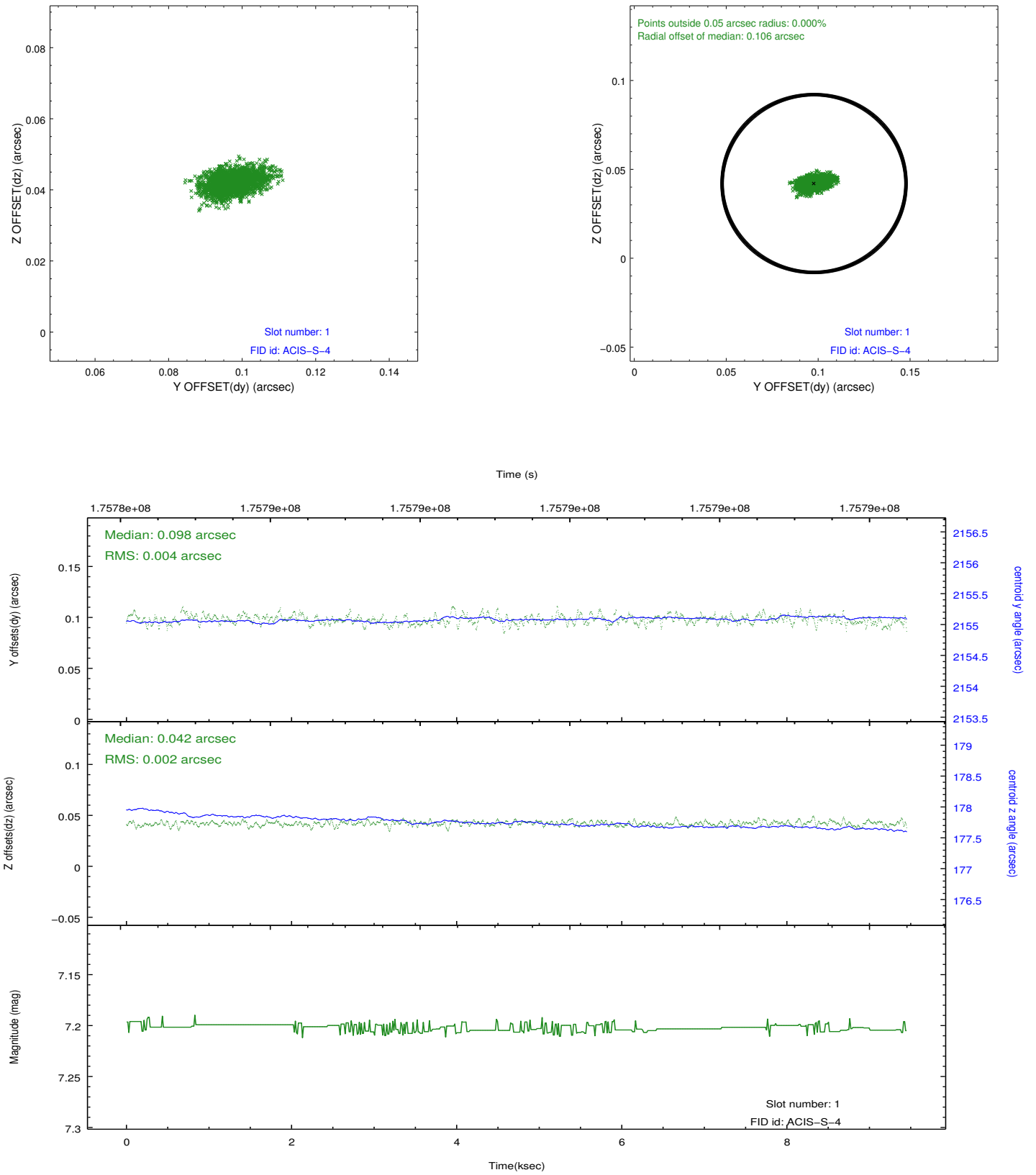


## 2.5 FID Slots

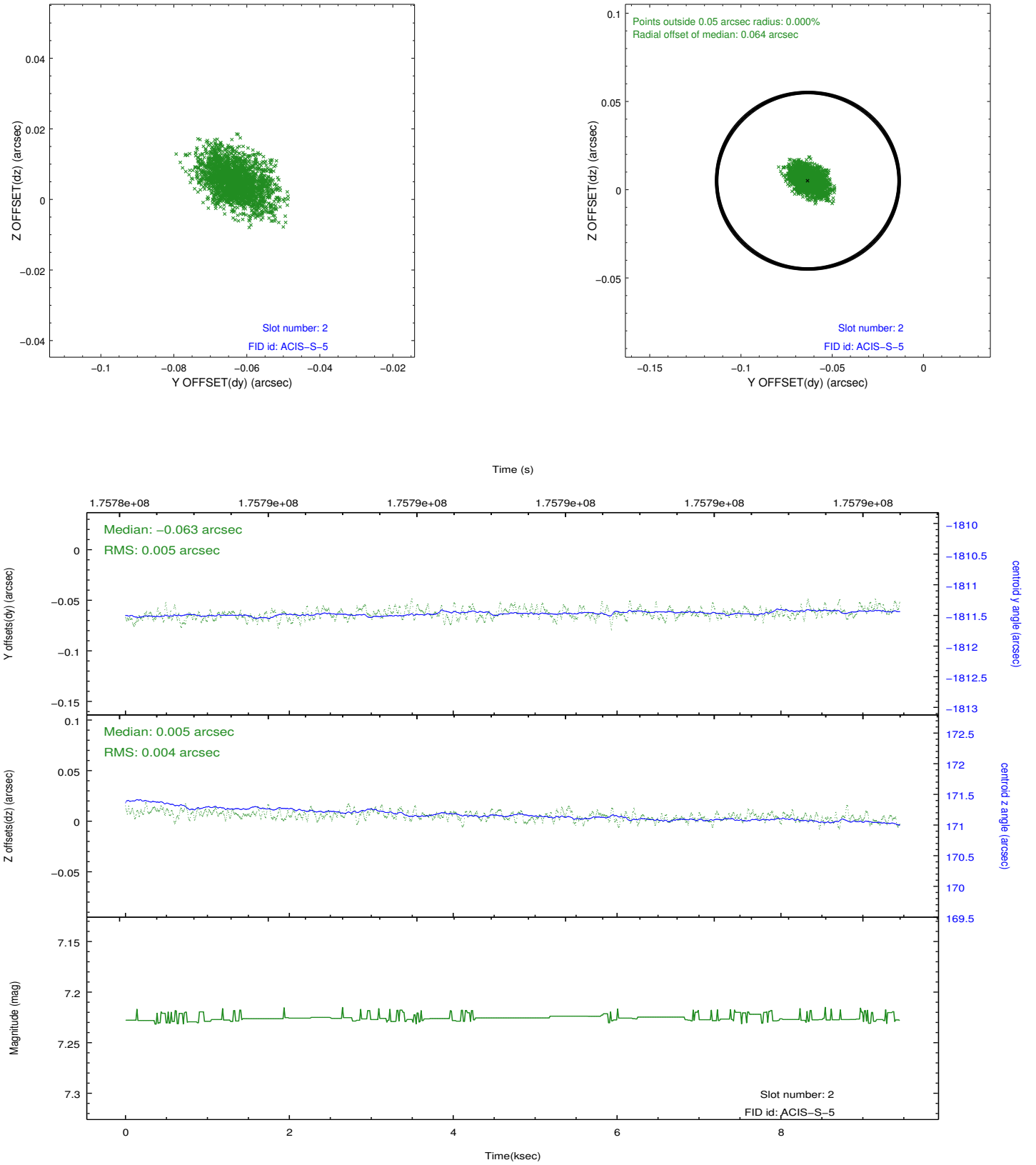
### 2.5.1 Slot 0



## 2.5.2 Slot 1



### 2.5.3 Slot 2



## A Summary

### A.1 Status

V&V Scientist	Beth Sundheim
V&V Date (YYYY-MM-DD)	2012.11.18
V&V Edition	1
V&V Disposition and Status	OK
V&V Charge Time	9.033

### A.2 Comments