

V&V Reference Report

L2 ASCDS Version : 7.6.9

Observation 4142 - L2 Version 001
Chandra X-Ray Center

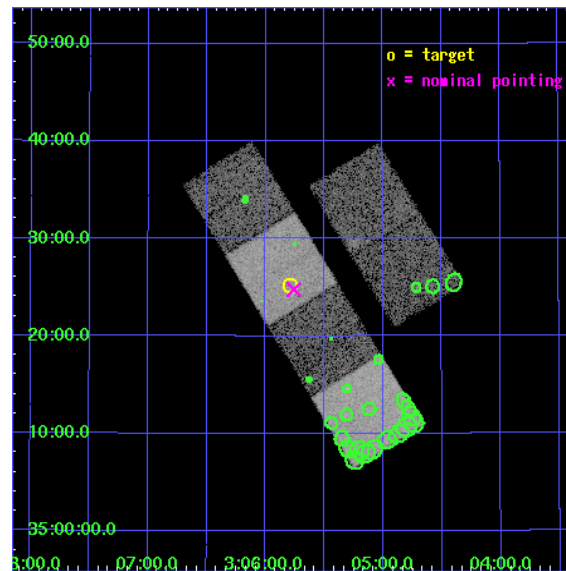
L2 Processing Date : Oct 13 2006

Contents

1	Front	2
2	OBI	3
2.1	OBI	3
2.1.1	Images	3
2.1.2	Bias	3
2.1.3	Parameters	4
2.1.4	Events	4
2.2	Compared Parameters	5
2.3	Aspect	6
2.4	Star Slots	9
2.4.1	Slot 3	9
2.4.2	Slot 4	10
2.4.3	Slot 5	11
2.4.4	Slot 6	12
2.4.5	Slot 7	13
2.5	FID Slots	14
2.5.1	Slot 0	14
2.5.2	Slot 1	15
2.5.3	Slot 2	16
3	Point Sources	17
A	Summary	18
A.1	Status	18
A.2	Comments	18

1 Front

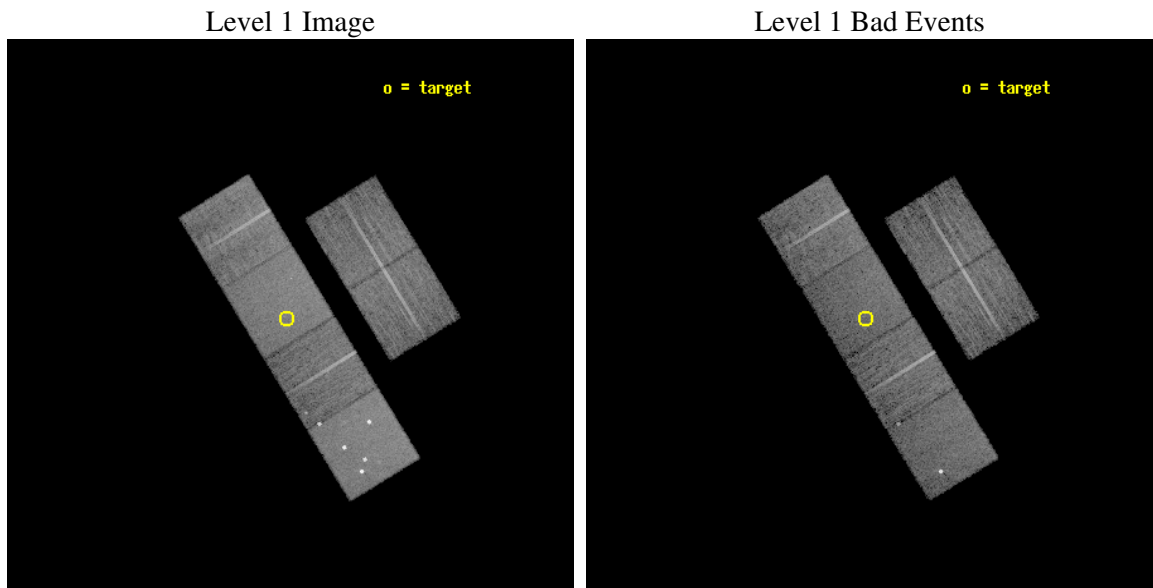
seq_num	700821
obs_id	4142
title	OBSCURED HIGH REDSHIFT RADIO GALAXIES
observer	Wil van Bruegel
object	J0305+3525
dtcycle	0
cycle	P
ra_targ	46.4475
dec_targ	35.420389
ra_nom	46.439630000344
dec_nom	35.413192005163
roll_nom	238.48551565021
revision	2
ontime	12646.399952888
livetime	12486.263621937
ontime2	12643.158972621
ontime3	12646.399952888
ontime5	12646.399952888
ontime6	12646.399952888
ontime7	12646.399952888
ontime8	12646.399952888
l2events	119711



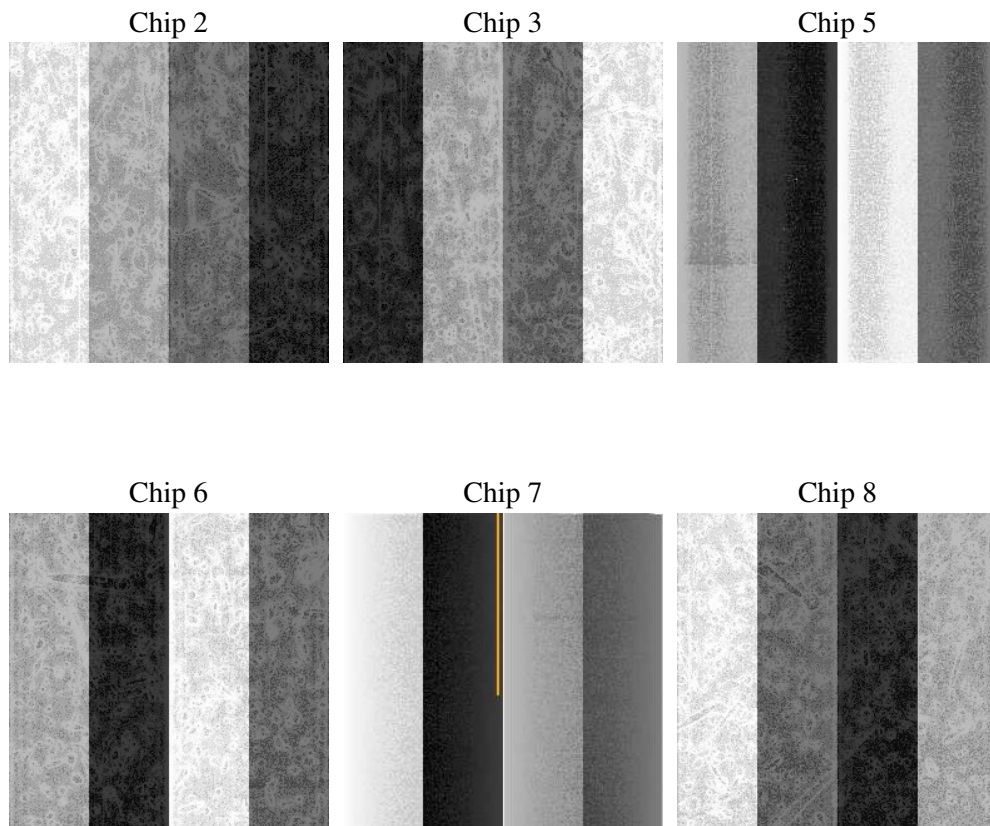
2 OBI

2.1 OBI

2.1.1 Images



2.1.2 Bias



2.1.3 Parameters

obi_num	1
ascdsver	7.6.9
caldbver	3.2.3
date	2006-10-13T17:33:10
revision	2

sched_exp_time	12682.718000
ontime	12649.653917491
ontime2	12646.412917346
ontime3	12649.653897613
ontime5	12649.653917491
ontime6	12649.653897613
ontime7	12649.653917491
ontime8	12649.653897613
l1events	574632

2.1.4 Events

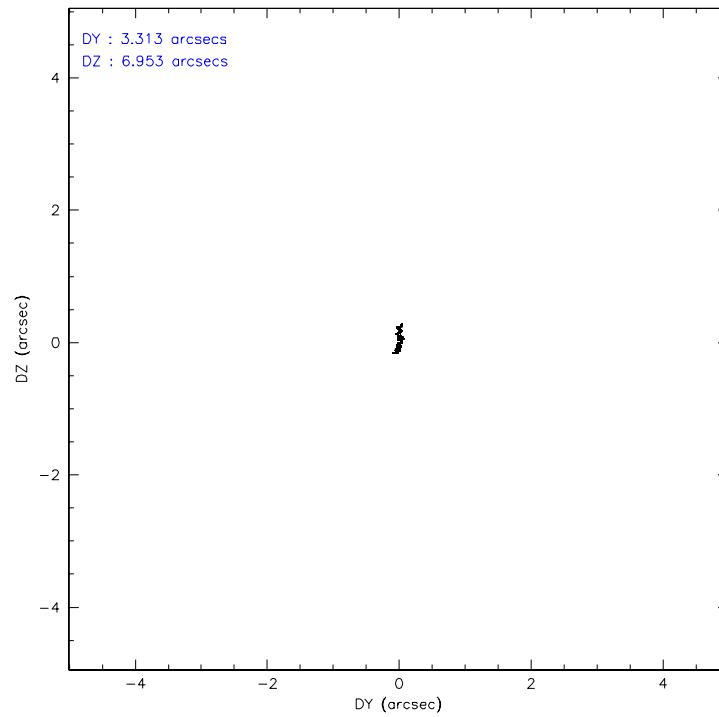
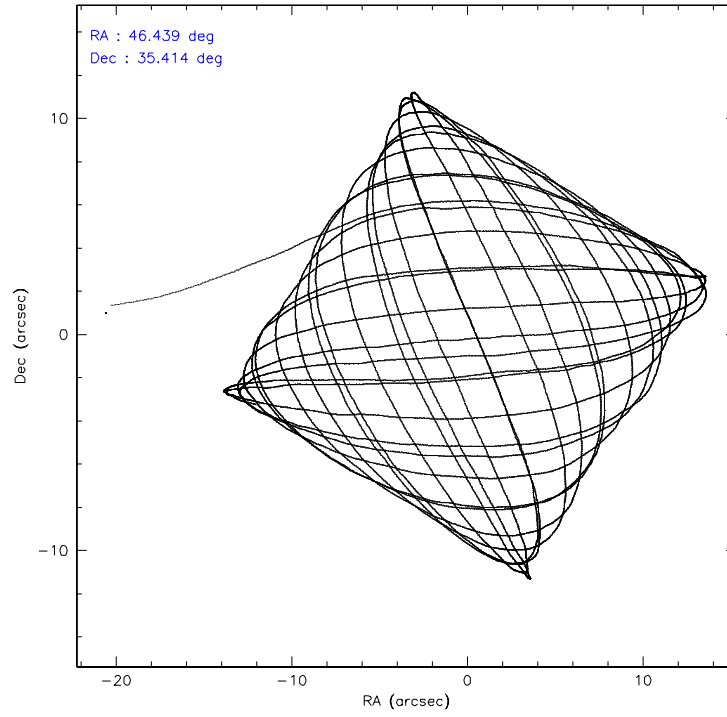
	ccd 2	ccd 3	ccd 5	ccd 6	ccd 7	ccd 8
level 1 events	82495	79037	128218	81151	104635	99096
rejected events	73470	69926	67617	71637	64367	78640
rejected %	89%	88%	52%	88%	61%	79%

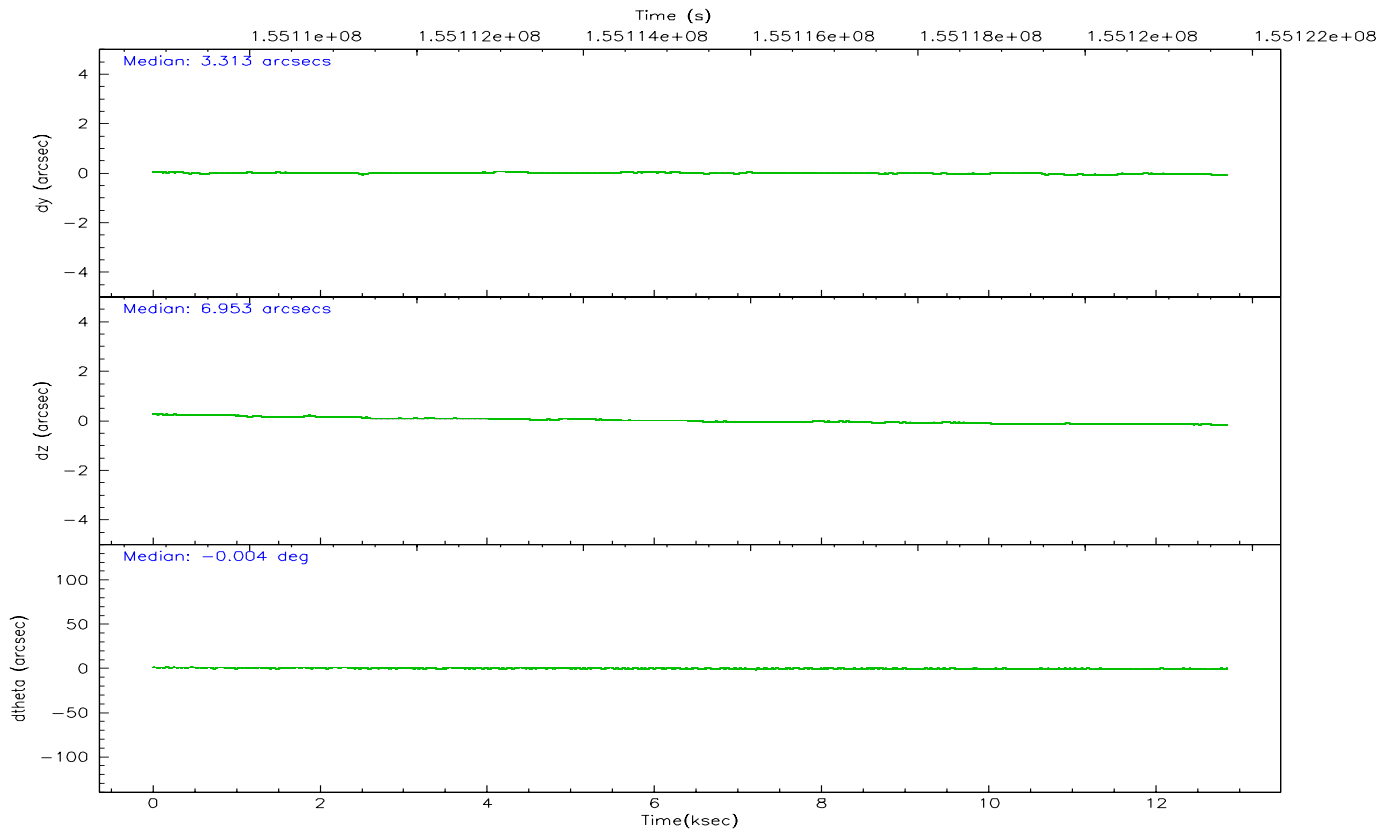
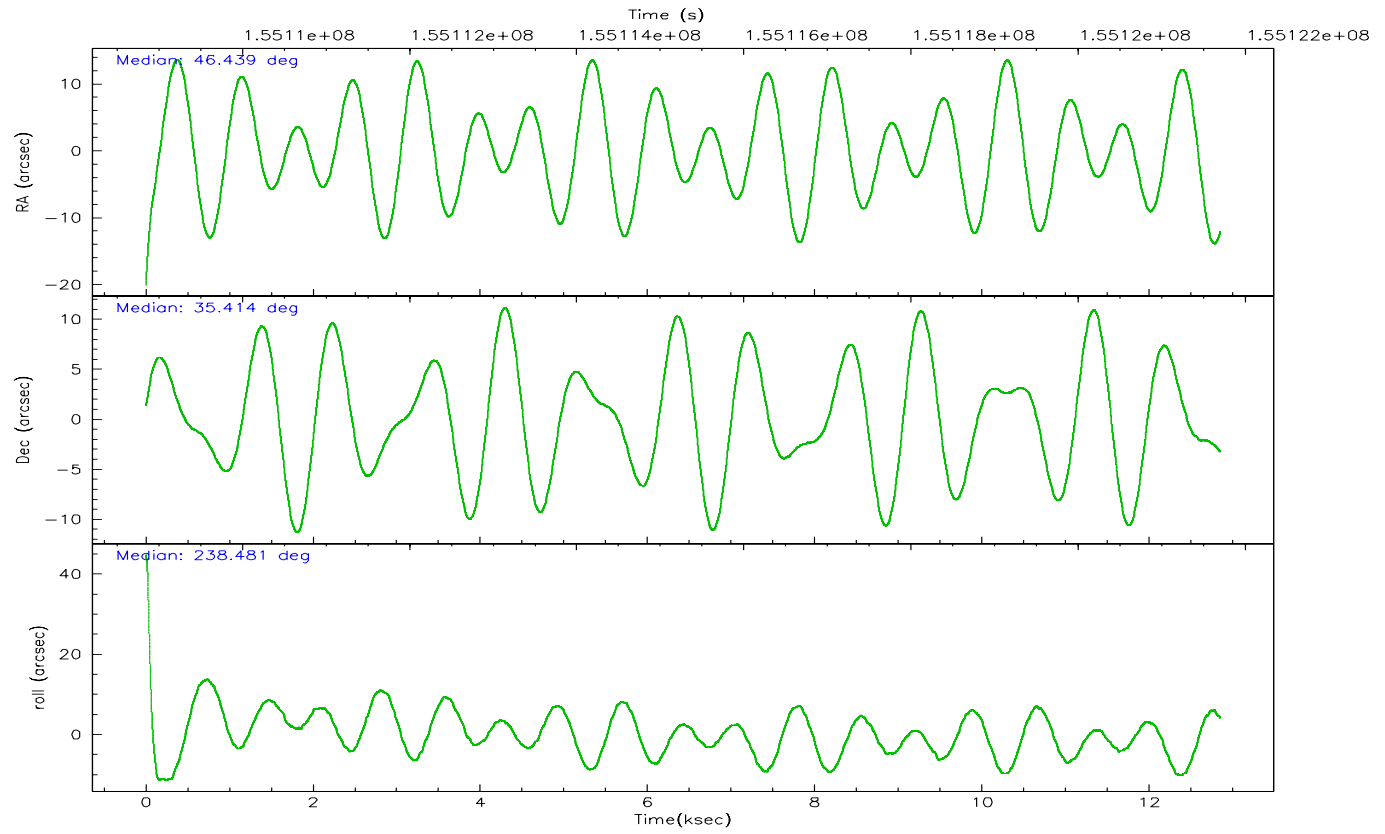
	ccd 2	ccd 3	ccd 5	ccd 6	ccd 7	ccd 8
grade 0 events	3964	3958	12169	3943	2277	6456
	4%	5%	9%	4%	2%	6%
grade 1 events	47	39	222	32	63	60
	0%	0%	0%	0%	0%	0%
grade 2 events	1843	1703	16256	1881	9796	4380
	2%	2%	12%	2%	9%	4%
grade 3 events	884	931	1424	921	1963	2197
	1%	1%	1%	1%	1%	2%
grade 4 events	863	903	1291	940	1947	2067
	1%	1%	1%	1%	1%	2%
grade 5 events	3062	3329	6288	3540	6748	4473
	3%	4%	4%	4%	6%	4%
grade 6 events	1473	1619	29476	1830	24294	5359
	1%	2%	22%	2%	23%	5%
grade 7 events	70359	66555	61092	68064	57547	74104
	85%	84%	47%	83%	54%	74%

2.2 Compared Parameters

Parameter	Planned	Actual	Parameter	Planned	Actual
Instrument	ACIS	ACIS	Obspar format version number	6	6
Detector	ACIS-235678	ACIS-235678	Obspar file type	PREDICTED	ACTUAL
Grating	NONE	NONE	Obspar update status	NONE	UPDATED
Data mode	FAINT	FAINT	Number of optional ACIS chips dropped	0	0
Observation mode	POINTING	POINTING	On-chip summing requested	N	N
Pointing RA	46.440049	46.43963000034385	Subarray requested	NONE	NONE
Pointing Dec	35.440386	35.41319200516329	Alternating exposures requested	N	N
Pointing Roll	238.328593	238.4855156502105	Primary exposure time	0.000000	3.2
SIM focus pos (mm)	-0.684267	-0.6828225247311905			
SIM defocus (mm)	0	0.001444936568705701			
SIM translation stage pos (mm)	-190.132523	-190.1400660498719			
SIM translation stage offset (mm)	0	0.00754346686406393			
Observation start time	155109018.184000	155108052.79383			
Observation start date	2002-12-01T05:49:14	2002-12-01T05:34:12			
Observation end time	155121700.184000	155122014.83191			
Observation end date	2002-12-01T09:20:36	2002-12-01T09:26:54			
Read mode	TIMED	TIMED			

2.3 Aspect



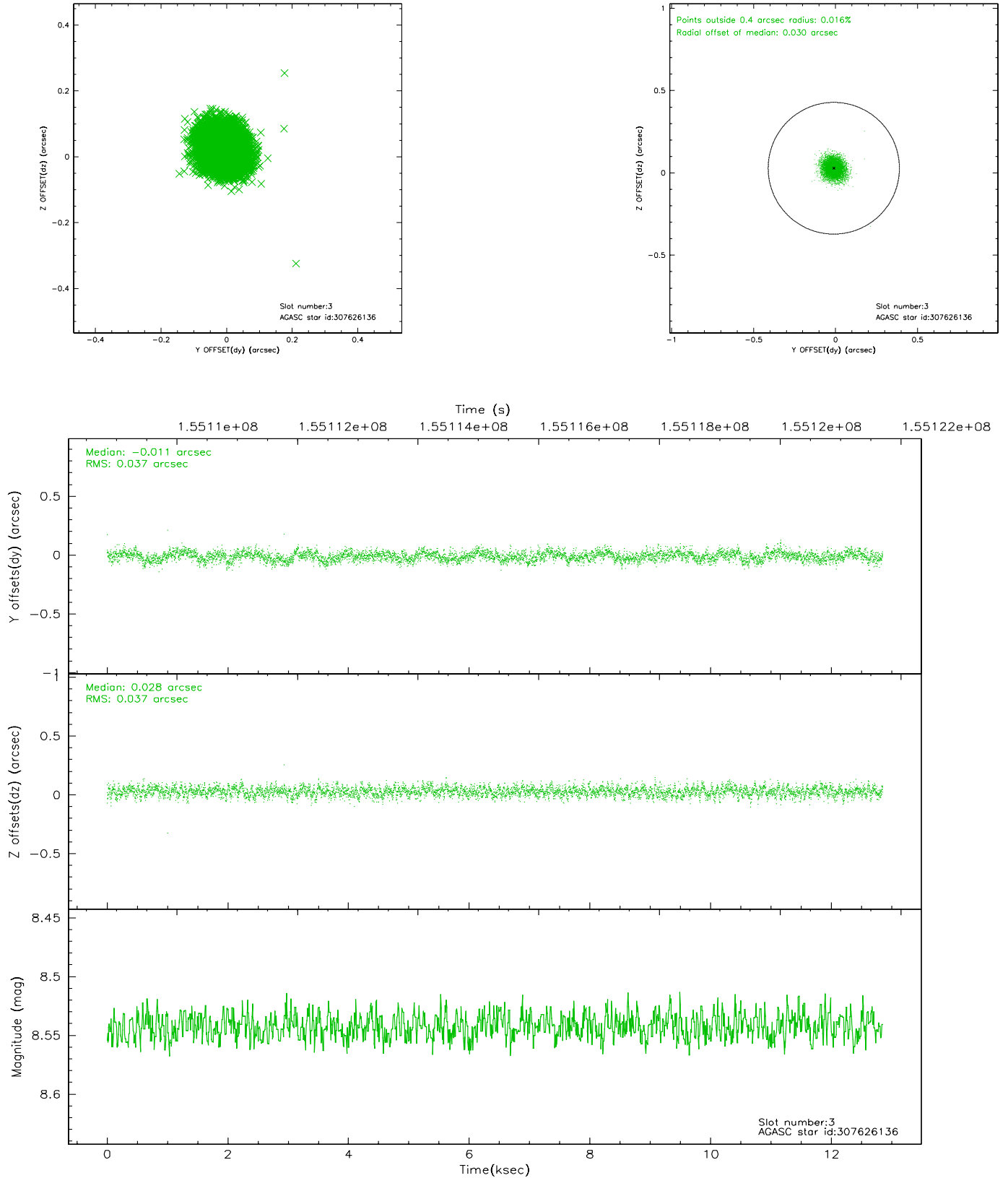


Slot Statistics

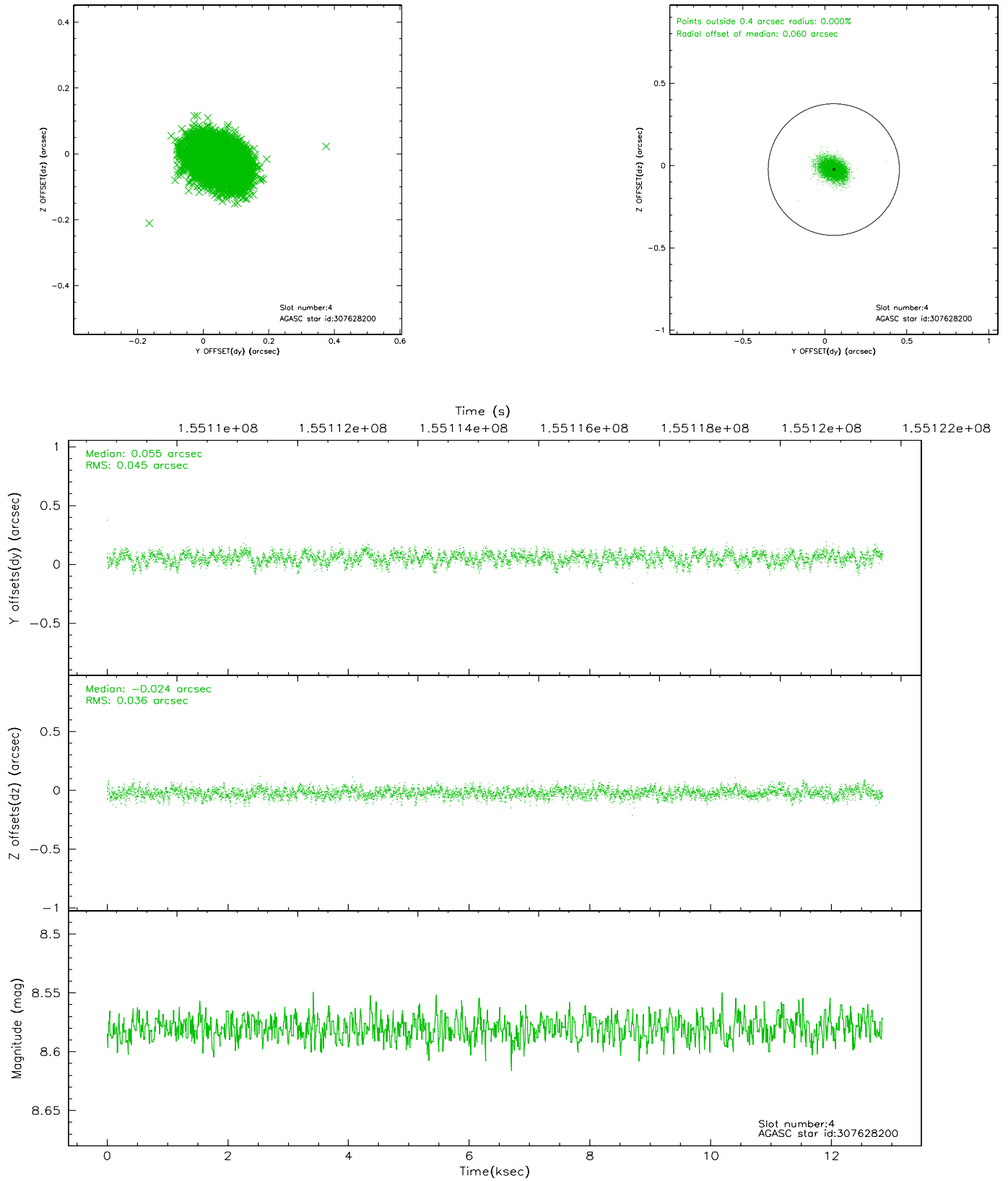
slot	status	id	mag	n_pts	med_dy	med_dz	dr1	dr2	ra	dec	mean_y	mean_z
0	FID	ACIS-S-2	7.12	3133	-0.012	0.020	0.009	0.016	0.000000	0.000000	-755.96	-1728.11
1	FID	ACIS-S-4	7.20	3132	-0.024	0.001	0.007	0.012	0.000000	0.000000	2157.12	179.97
2	FID	ACIS-S-5	7.24	3133	0.004	-0.011	0.007	0.011	0.000000	0.000000	-1808.31	174.05
3	GUIDE	307626136	8.54	6264	-0.011	0.028	0.055	0.090	46.076477	35.572818	152.49	-1156.15
4	GUIDE	307628200	8.58	6269	0.055	-0.024	0.061	0.099	46.624610	35.446327	-301.98	450.19
5	GUIDE	307628840	7.94	6268	-0.044	0.032	0.057	0.090	46.718364	35.123891	538.99	1296.50
6	GUIDE	307633256	8.70	6265	-0.043	0.013	0.069	0.106	46.698751	34.717962	1811.42	2018.19
7	GUIDE	307627632	8.69	6268	0.043	-0.051	0.067	0.109	46.237119	34.770215	2369.60	757.73

2.4 Star Slots

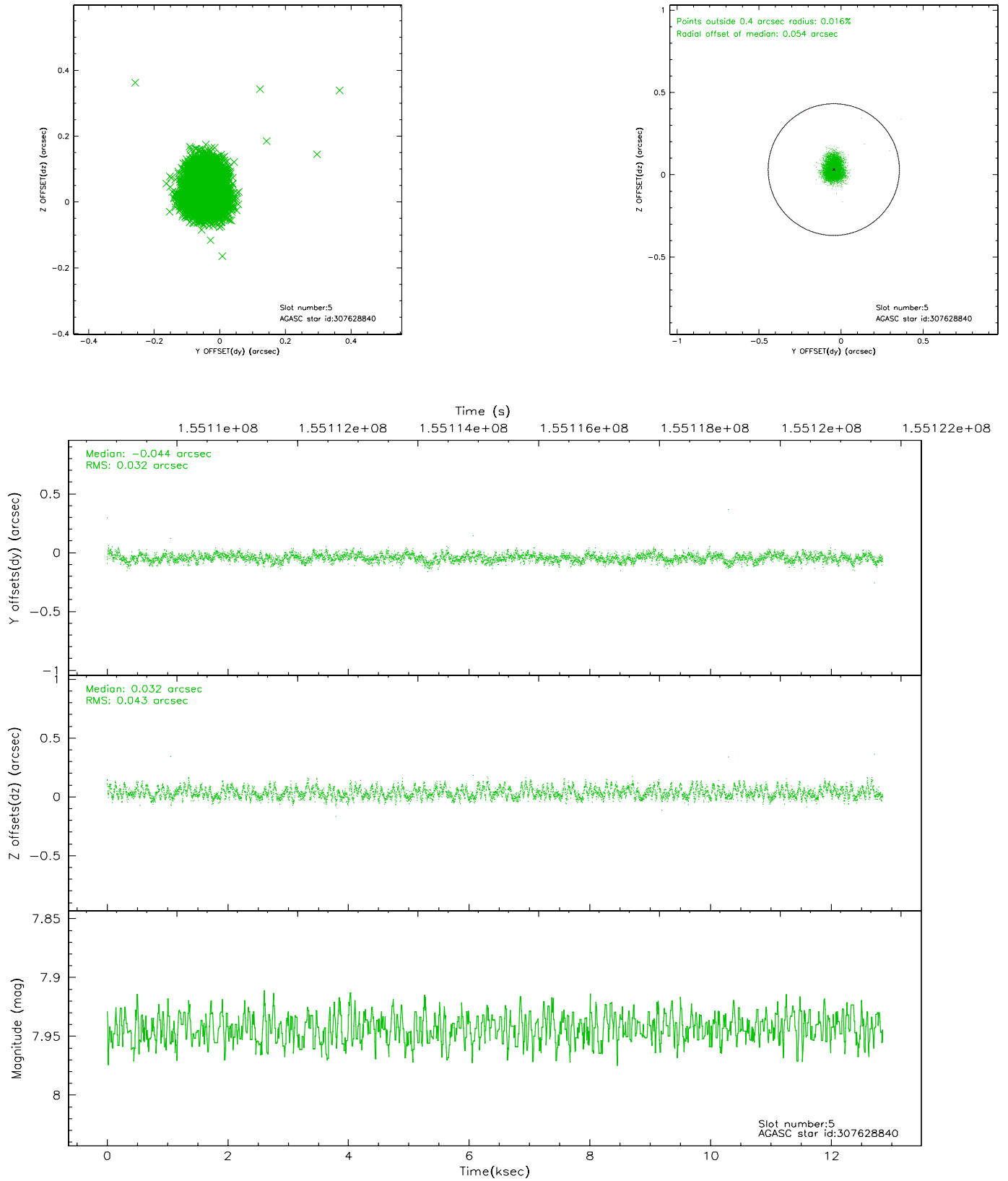
2.4.1 Slot 3



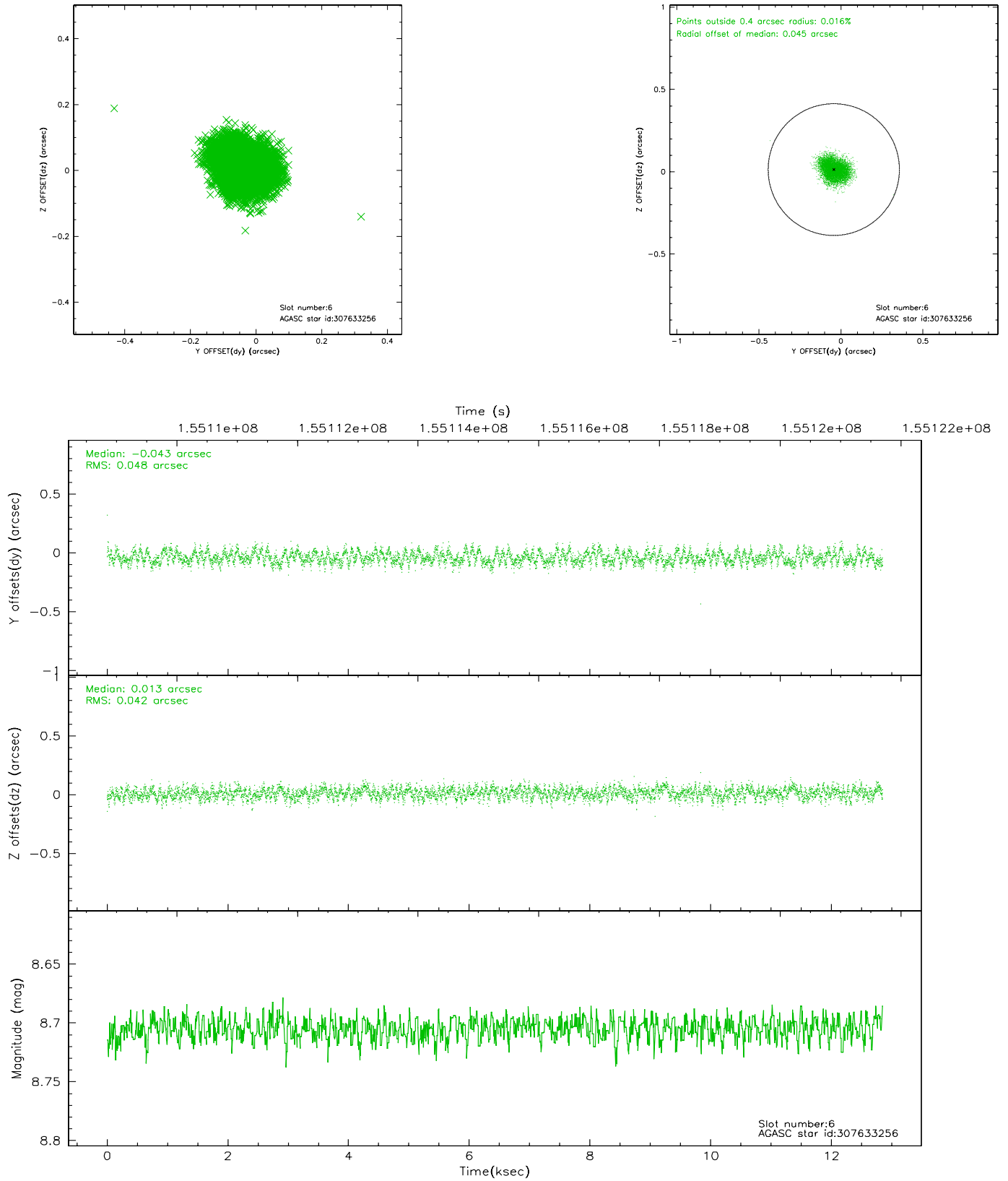
2.4.2 Slot 4



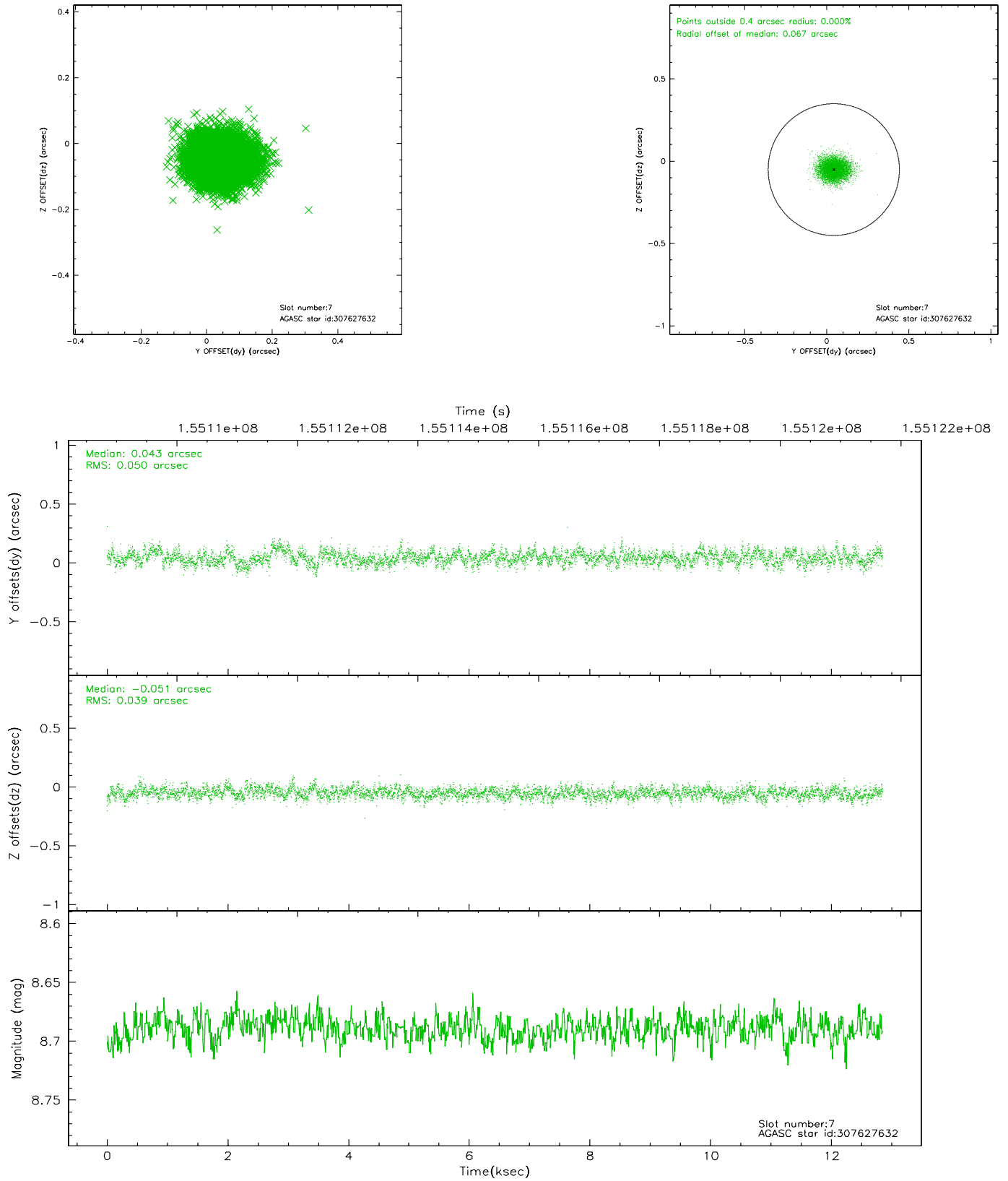
2.4.3 Slot 5



2.4.4 Slot 6

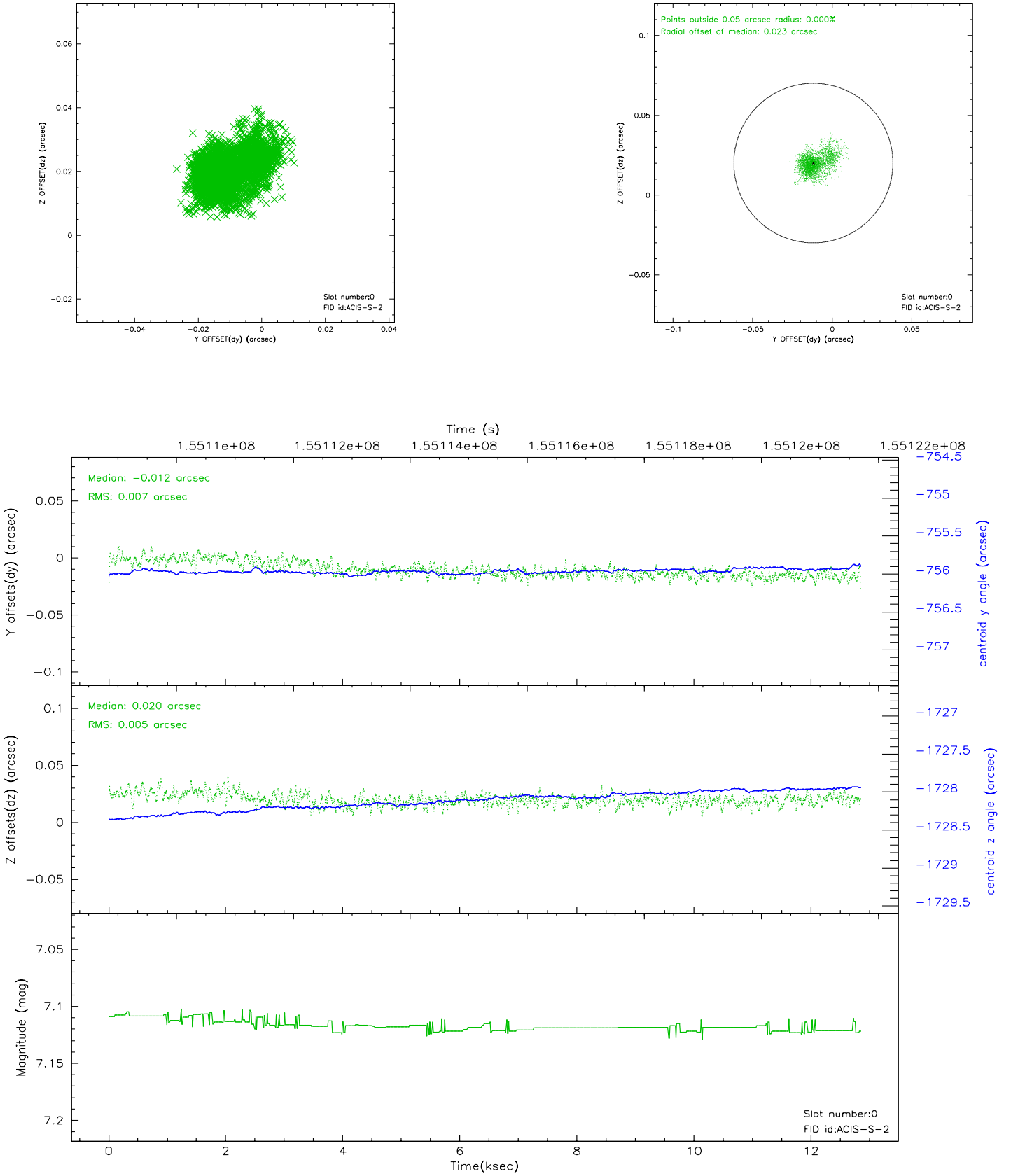


2.4.5 Slot 7

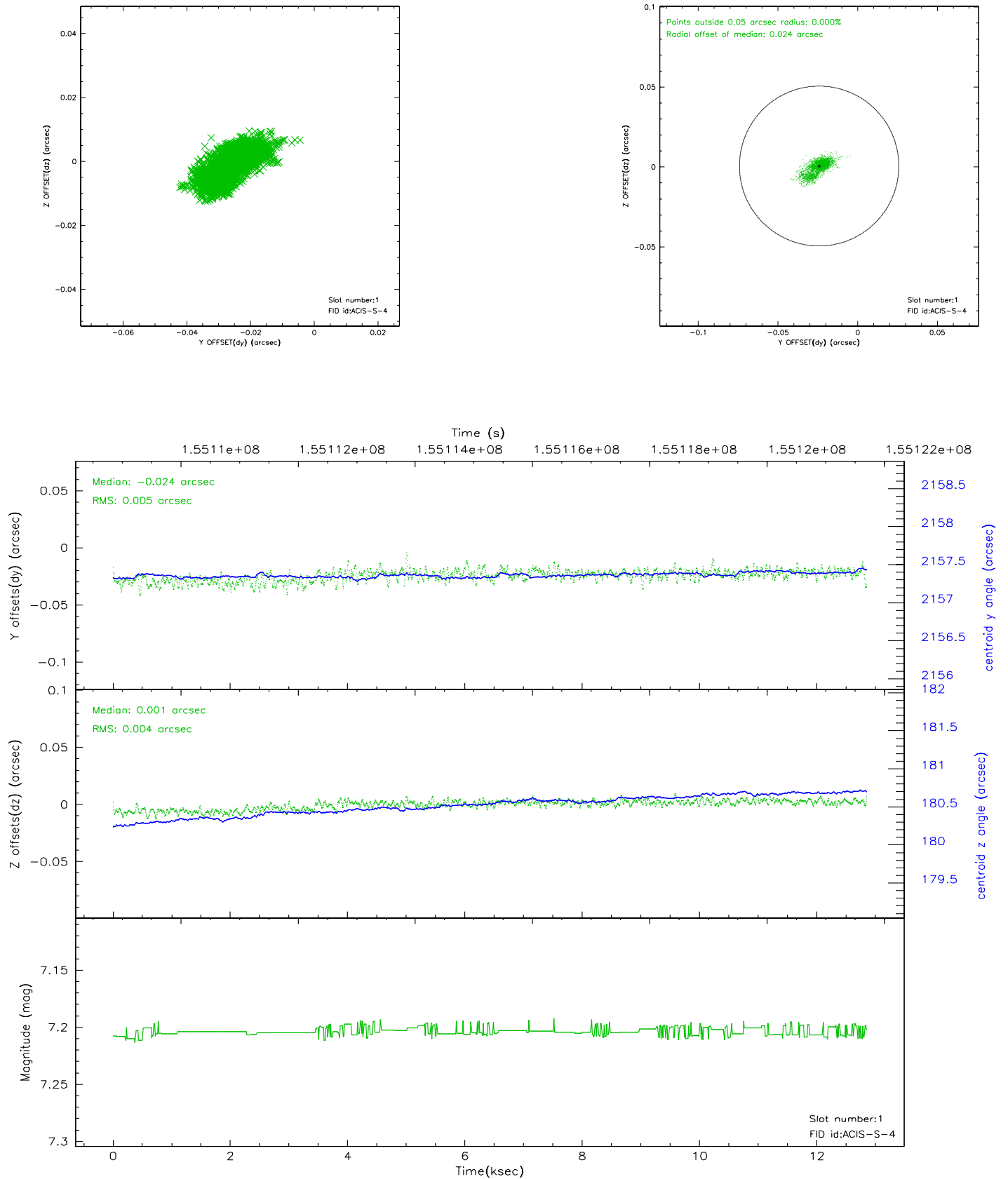


2.5 FID Slots

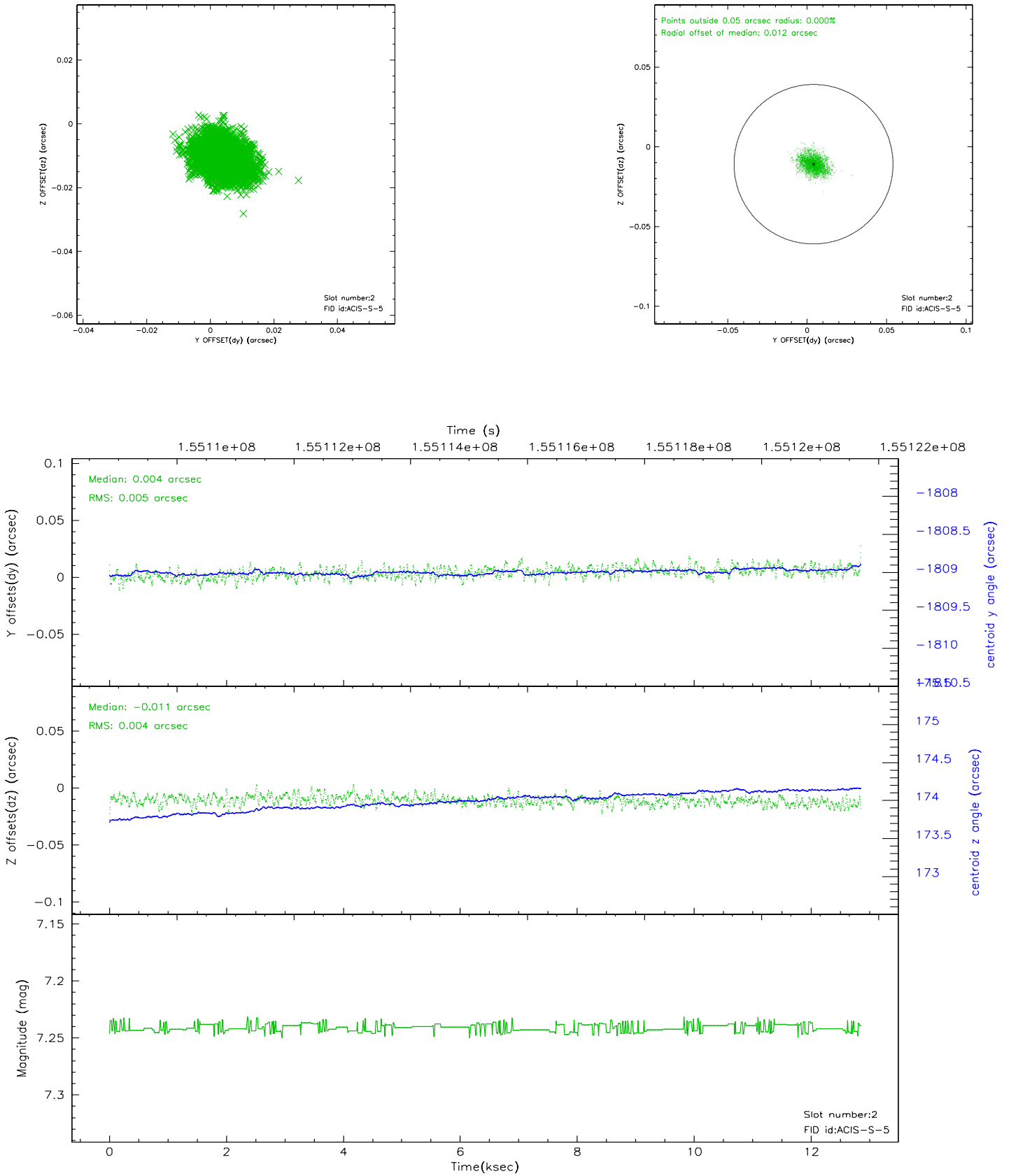
2.5.1 Slot 0



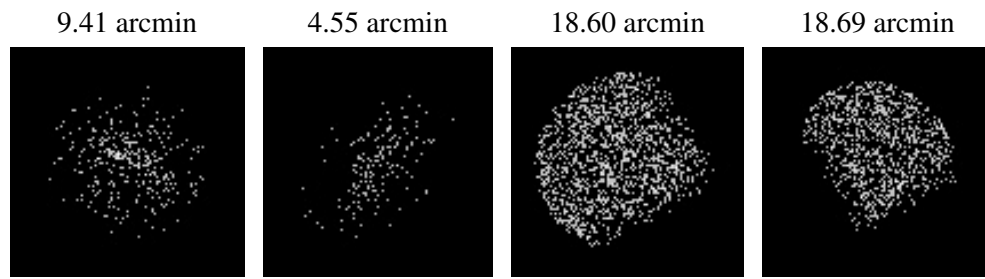
2.5.2 Slot 1



2.5.3 Slot 2



3 Point Sources



A Summary

A.1 Status

V&V Scientist	Beth Sundheim
V&V Date (YYYY-MM-DD)	2006.10.13
V&V Edition	1
V&V Disposition and Status	OK
V&V Charge Time	12.646

A.2 Comments