

V&V Reference Report

L2 ASCDS Version : 8.4.5

Observation 4139 - L2 Version 4
Chandra X-Ray Center

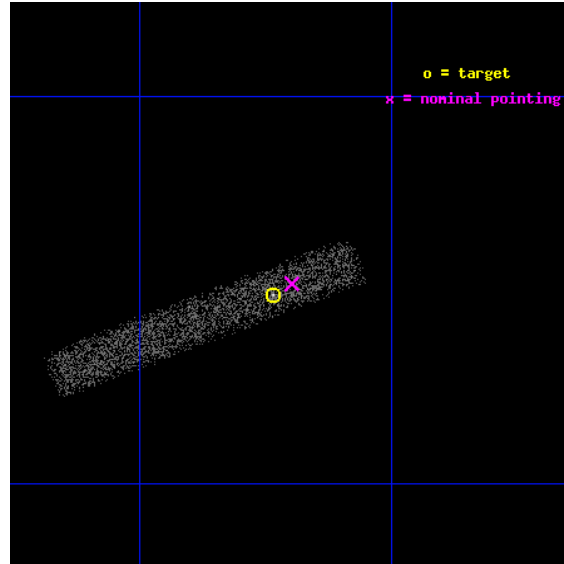
L2 Processing Date : Jan 7 2013

Contents

1	Front	2
2	OBI	3
2.1	OBI	3
2.1.1	Images	3
2.1.2	Bias	3
2.1.3	Parameters	4
2.1.4	Events	4
2.2	Compared Parameters	5
2.3	Aspect	6
2.4	Star Slots	9
2.4.1	Slot 3	9
2.4.2	Slot 4	10
2.4.3	Slot 6	11
2.4.4	Slot 7	12
2.5	FID Slots	13
2.5.1	Slot 0	13
2.5.2	Slot 1	14
2.5.3	Slot 2	15
A	Summary	16
A.1	Status	16
A.2	Comments	16

1 Front

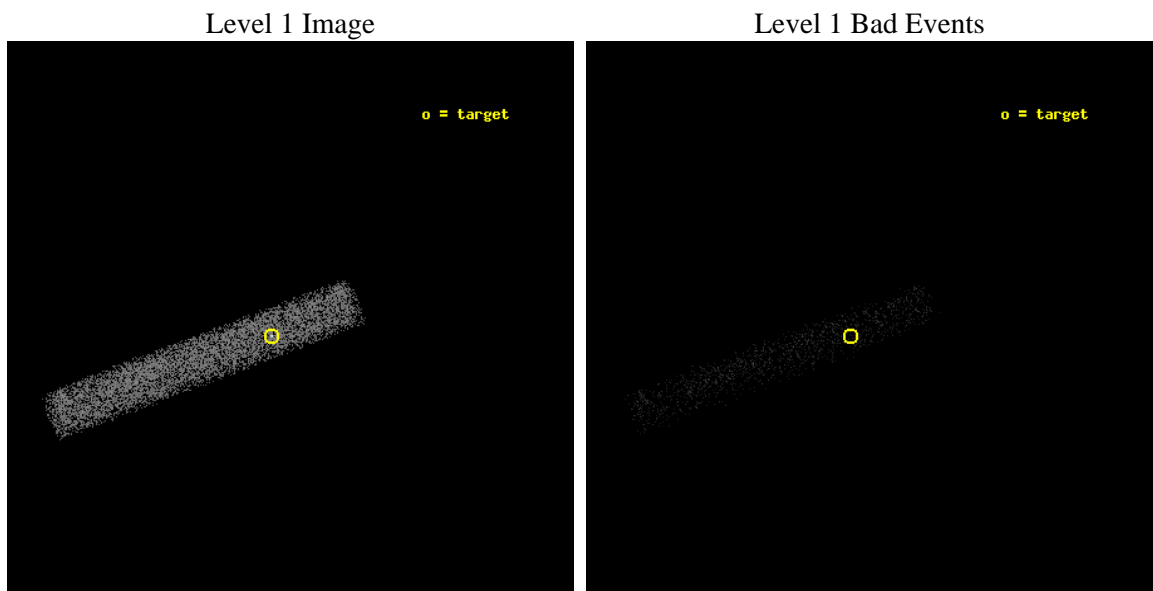
seq_num	700818	Sequence number
obs_id	4139	Observation id
title	CHANDRA OBSERVATIONS OF THE FIRST SAMPLE OF RADIO-LOUD NARROW LINE SEYFERT I GALAXIES	Proposal title
observer	Dr. Sally Laurent-Muehleisen	Principal investigator
object	FIRST J142114+282452	Source name
dtcycle	0	
cycle	P	events from which exps? Prim/Second/Both
ra_targ	215.30875	Observer's specified target RA [deg]
dec_targ	28.4145	Observer's specified target Dec [deg]
ra_nom	215.29936821356	Nominal RA [deg]
dec_nom	28.419439133277	Nominal Dec [deg]
roll_nom	159.26413569241	Nominal Roll [deg]
revision	4	Processing version of data
ontime	10362.000154376	Sum of GTIs [s]
livetime	9397.7871888047	Livetime [s]
ontime7	10362.000154376	Sum of GTIs [s]
l2events	5253	Number of level 2 events



2 OBI

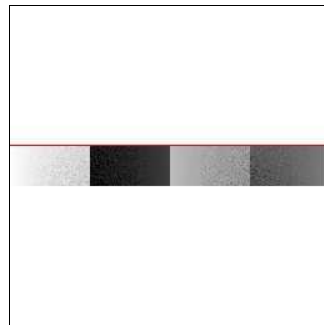
2.1 OBI

2.1.1 Images



2.1.2 Bias

Chip 7



2.1.3 Parameters

obi_num	0	Obi number	sched_exp_time	10200.000000	[s] Scheduled observation exposure time
ascdsver	8.5.1.1	Processing system revision	ontime	10362.000154376	Sum of GTIs [s]
caldsver	4.5.5	 	ontime7	10362.000154376	Sum of GTIs [s]
date	2013-01-07T21:36:43	Date and time of file creation	l1events	12497	Number of level 1 events
revision	4	Processing version of data			

2.1.4 Events

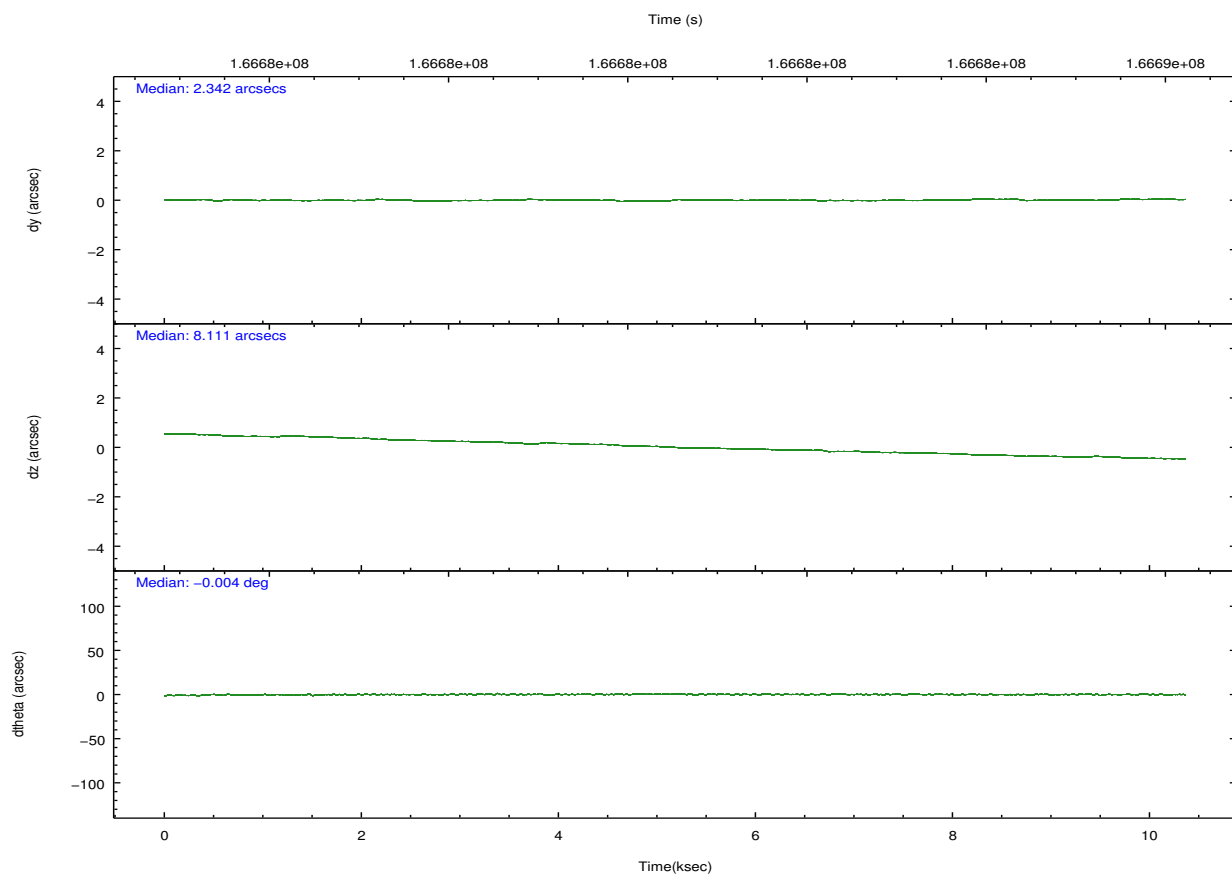
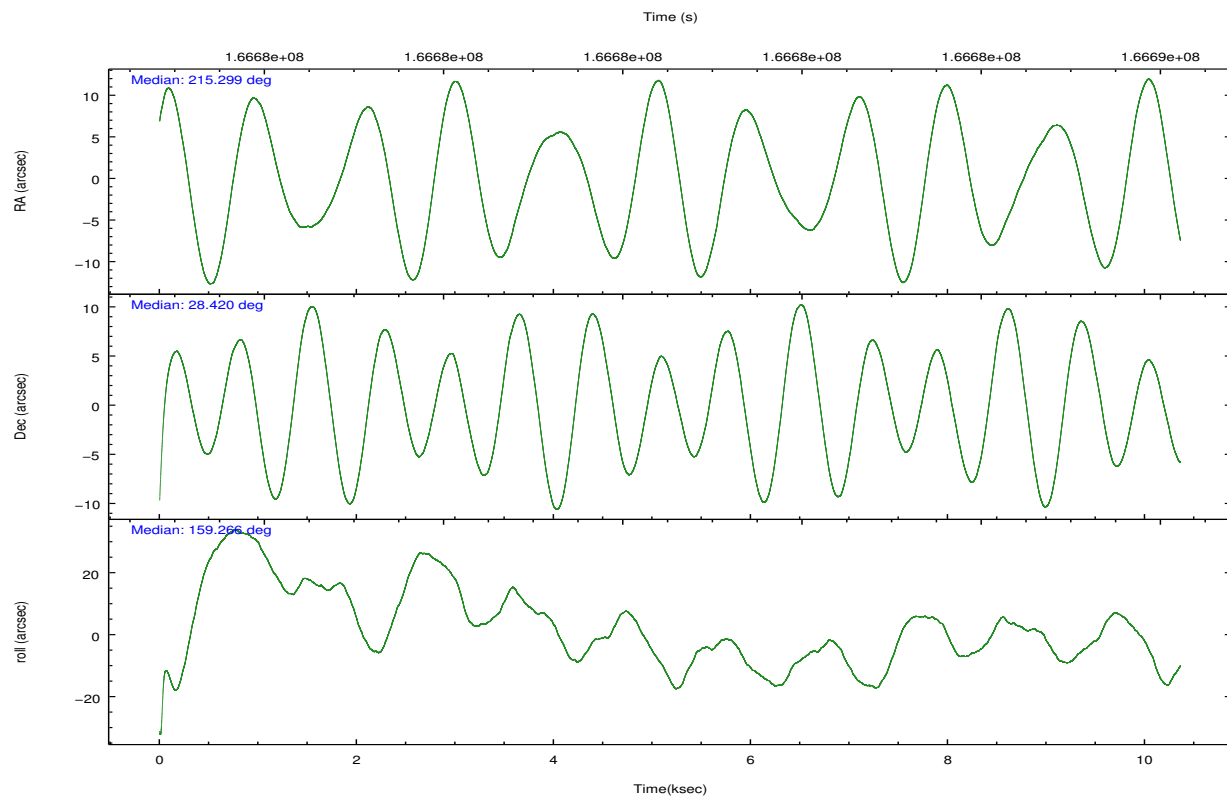
	ccd 7
level 1 events	12497
rejected events	7043
rejected %	56%

	ccd 7
grade 0 events	734
	5%
grade 1 events	13
	0%
grade 2 events	1084
	8%
grade 3 events	778
	6%
grade 4 events	689
	5%
grade 5 events	1166
	9%
grade 6 events	2556
	20%
grade 7 events	5477
	43%

2.2 Compared Parameters

Parameter	Planned	Actual	Parameter	Planned	Actual
Instrument	ACIS	ACIS	Obspar format version number	7	7
Detector	ACIS-7	ACIS-7	Obspar file type	PREDICTED	ACTUAL
Grating	NONE	NONE	Obspar update status	NONE	UPDATED
Data mode	FAINT	FAINT	Number of optional ACIS chips dropped	0	0
Observation mode	POINTING	POINTING	On-chip summing requested	N	N
[deg] Pointing RA	215.329797	215.2993682135597	Subarray requested	CUSTOM	1/8
[deg] Pointing Dec	28.424205	28.41943913327734	Subarray start row	449	449
[deg] Pointing Roll	159.093044	159.2641356924056	Subarray row count	128	128
[mm] SIM focus pos	-0.684267	-0.6828225247311905	Alternating exposures requested	N	N
[mm] SIM defocus	0	0.001444936568705701	[s] Primary exposure time	0.000000	0.4
[mm] SIM translation stage pos	-190.132523	-190.1400660498719			
[mm] SIM translation stage offset	0	0.00754346686406393			
[s] Observation start time (MET)	166675511.184000	166674489.99163			
Observation start date	2003-04-14T02:44:07	2003-04-14T02:28:09			
[s] Observation end time (MET)	166685711.184000	166686414.32963			
Observation end date	2003-04-14T05:34:07	2003-04-14T05:46:54			
Read mode	TIMED	TIMED			

2.3 Aspect

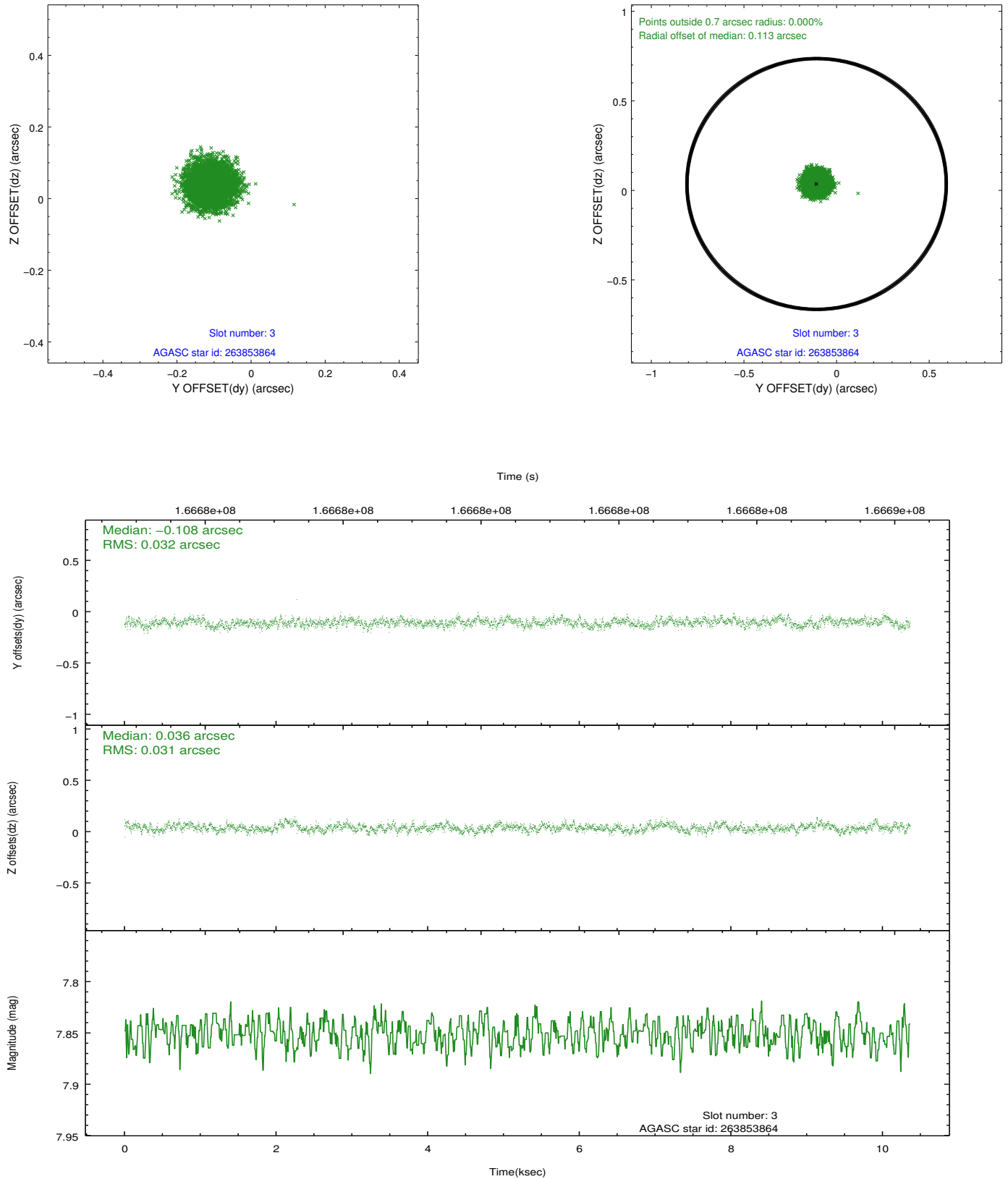


Slot Statistics

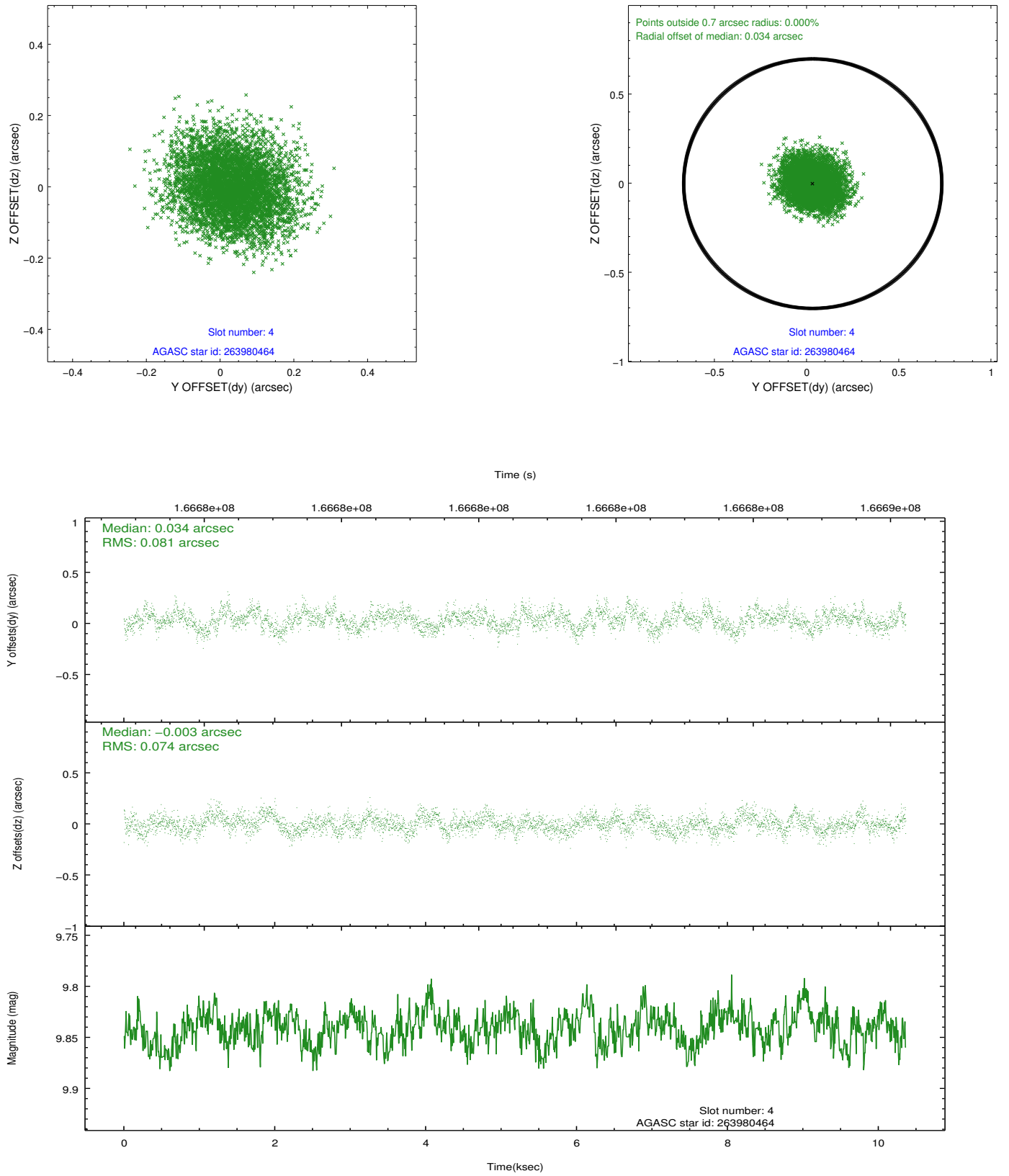
slot	status	id	mag	n_pts	med_dy	med_dz	dr1	dr2	ra	dec	mean_y	mean_z
0	FID	ACIS-S-2	7.11	2528	-0.021	-0.009	0.007	0.012	0.000000	0.000000	-754.99	-1729.34
1	FID	ACIS-S-4	7.21	2528	-0.020	0.012	0.008	0.015	0.000000	0.000000	2158.06	178.64
2	FID	ACIS-S-5	7.24	2528	0.009	0.005	0.007	0.012	0.000000	0.000000	-1807.15	172.89
3	GUIDE	263853864	7.85	5055	-0.108	0.036	0.048	0.076	214.640696	28.439377	2059.96	721.71
4	GUIDE	263980464	9.84	5045	0.034	-0.003	0.118	0.190	215.549780	28.128620	-1030.76	744.73
5	OMITTED		0.00	0	0.000	0.000	0.000	0.000	0.000000	0.000000	0.00	0.00
6	GUIDE	263984360	9.67	5056	0.046	0.049	0.090	0.147	216.041078	28.506456	-1993.90	-1085.20
7	GUIDE	263985384	9.34	5044	0.028	-0.082	0.107	0.173	215.066586	28.496503	871.02	53.15

2.4 Star Slots

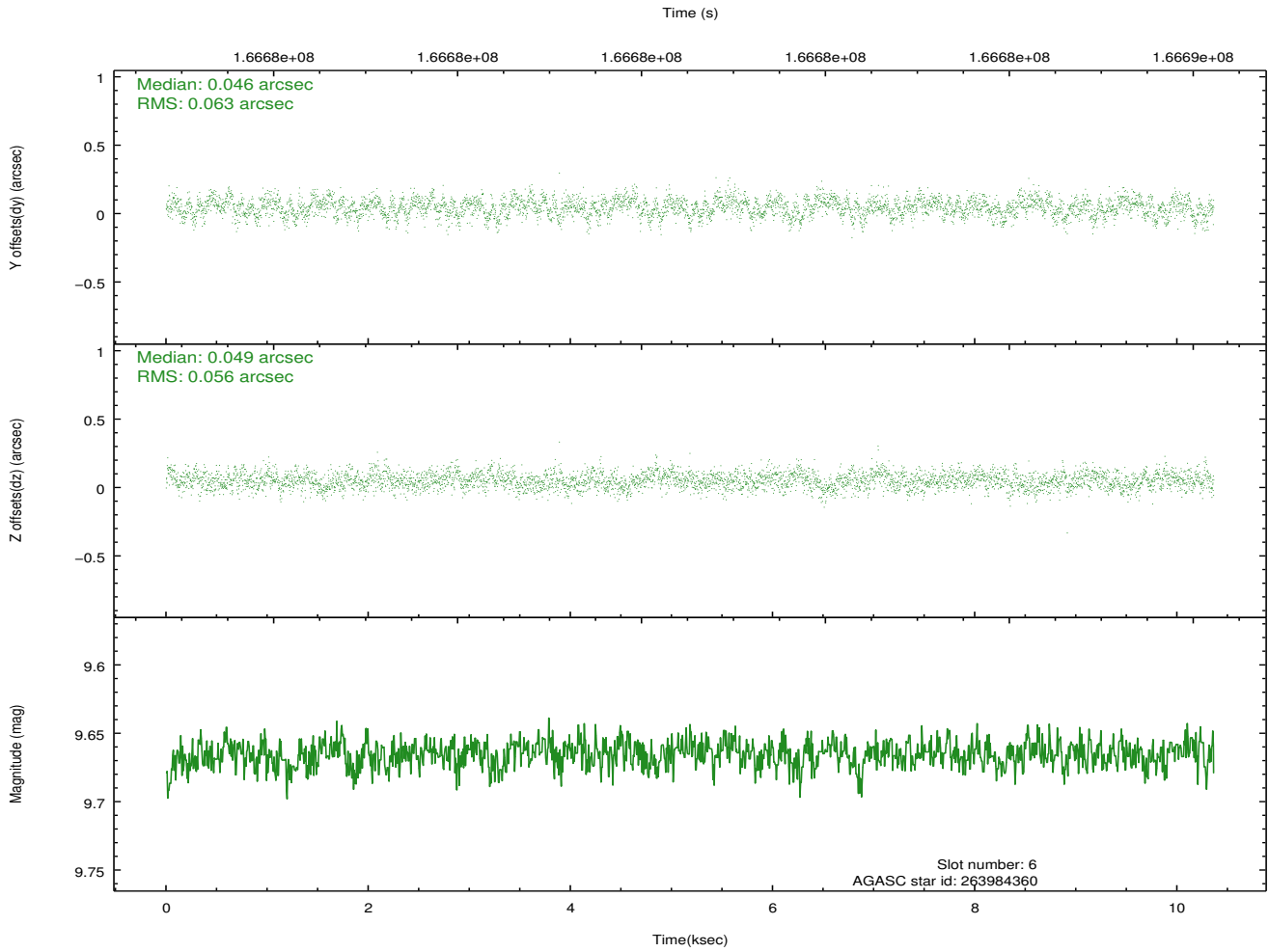
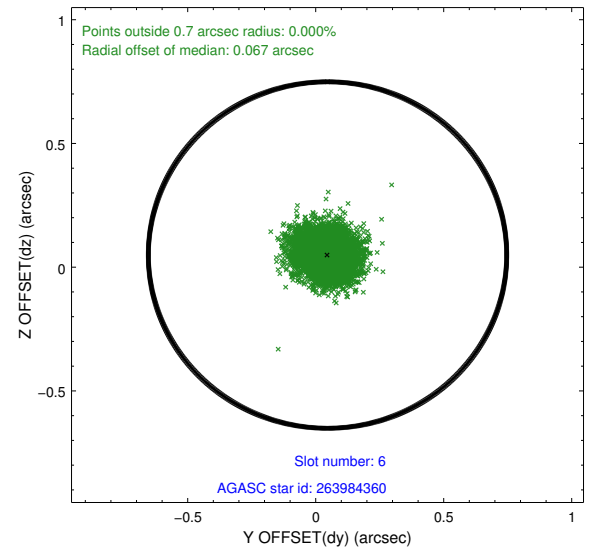
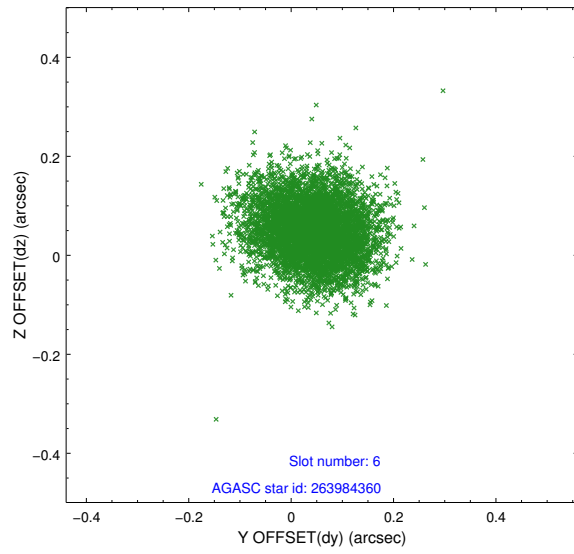
2.4.1 Slot 3



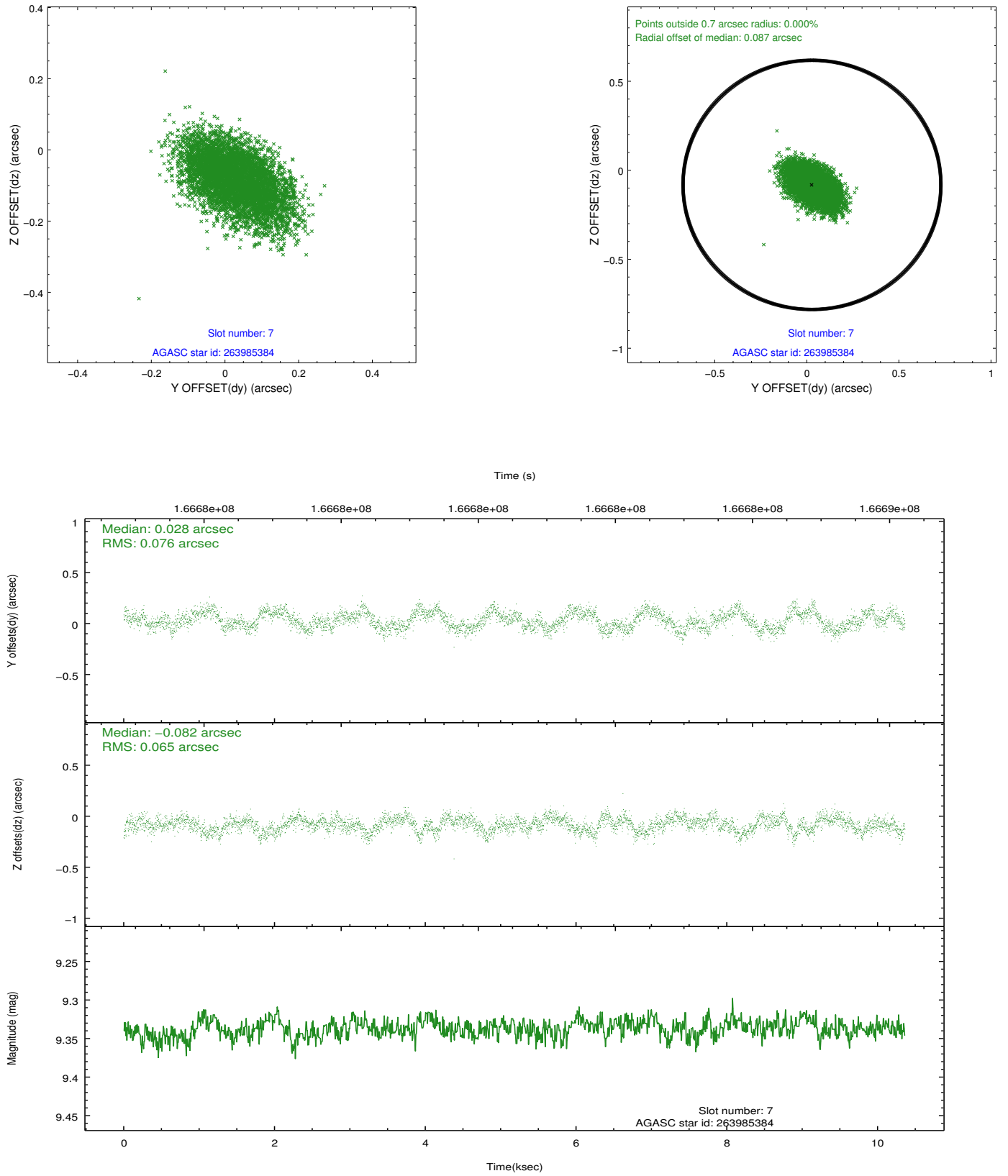
2.4.2 Slot 4



2.4.3 Slot 6

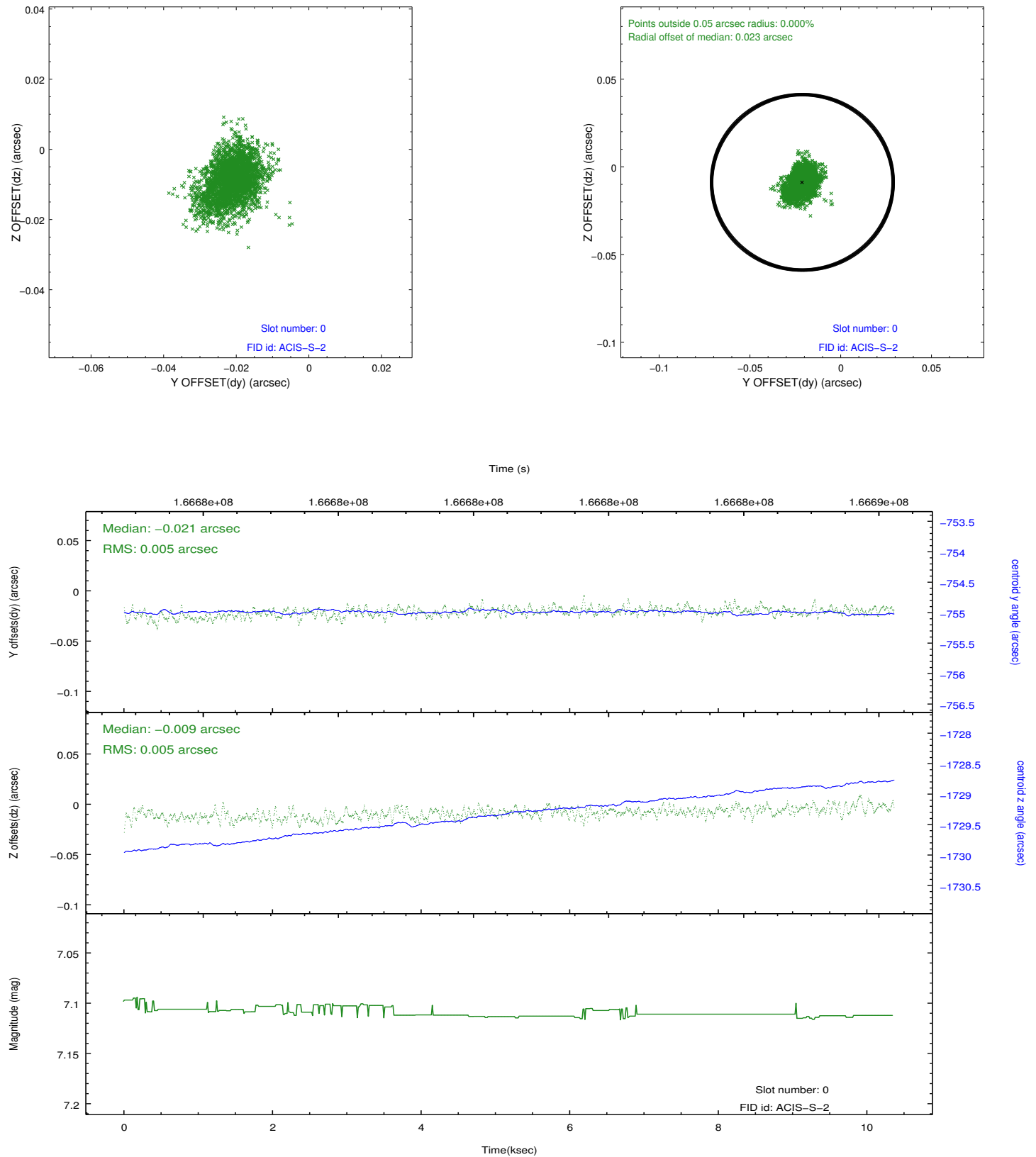


2.4.4 Slot 7

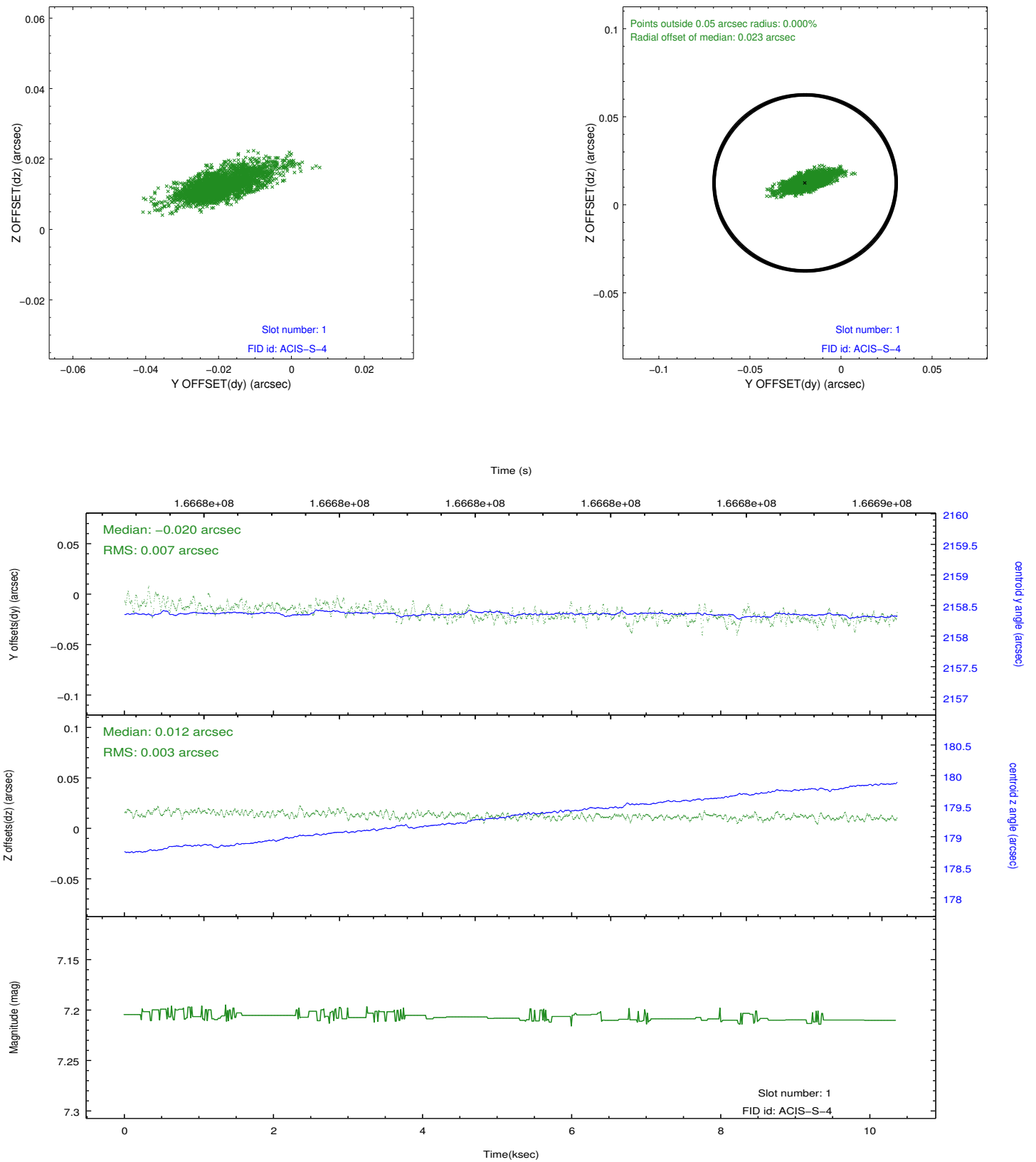


2.5 FID Slots

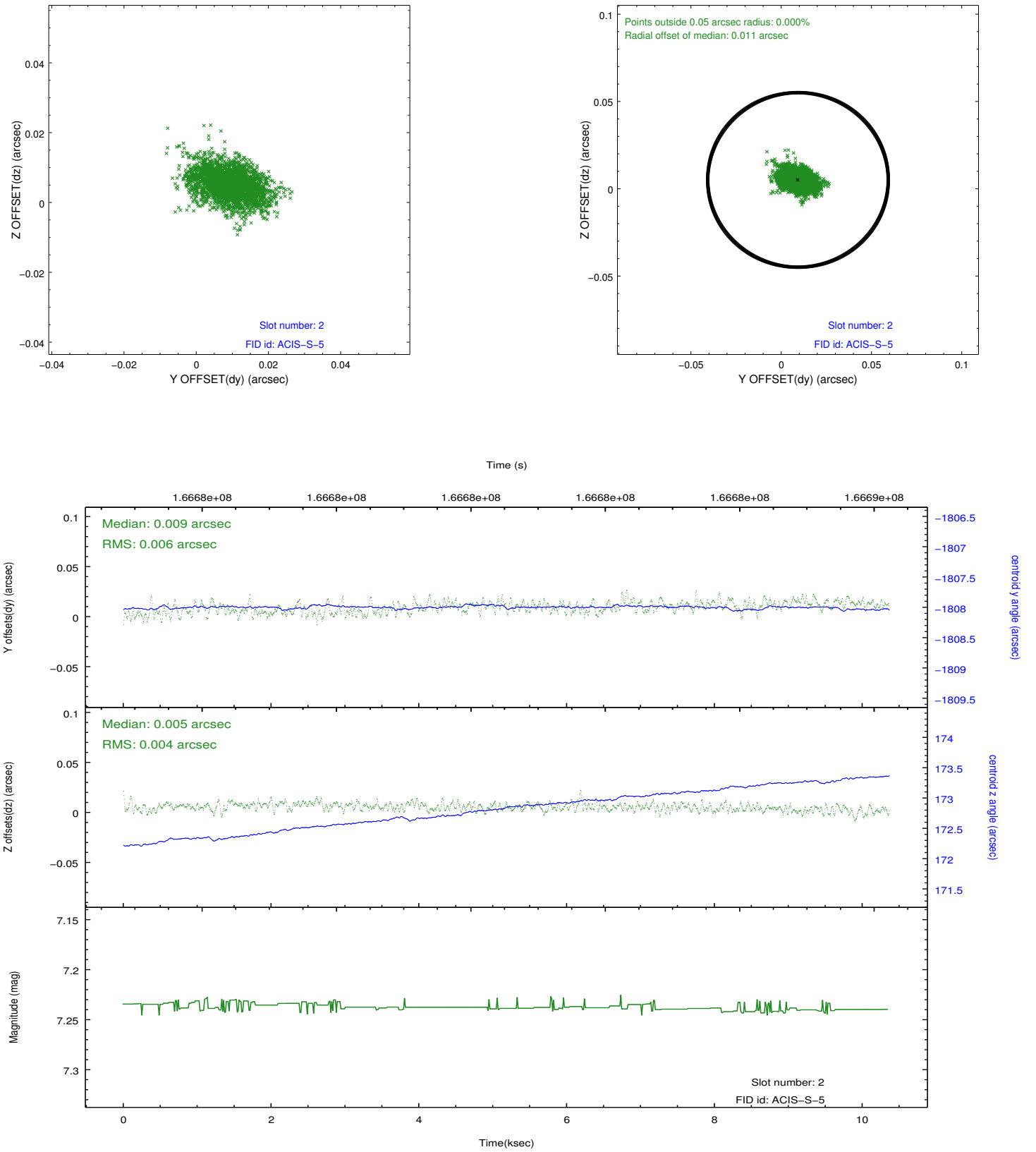
2.5.1 Slot 0



2.5.2 Slot 1



2.5.3 Slot 2



A Summary

A.1 Status

V&V Scientist	Beth Sundheim
V&V Date (YYYY-MM-DD)	2013.01.10
V&V Edition	1
V&V Disposition and Status	OK
V&V Charge Time	10.362

A.2 Comments

The guide star in slot 5 was removed from the aspect solution due to poor data quality. The aspect solution is improved by the removal of this star from the solution.