

V&V Reference Report

L2 ASCDS Version : 7.6.8.1

Observation 4139 - L2 Version 001
Chandra X-Ray Center

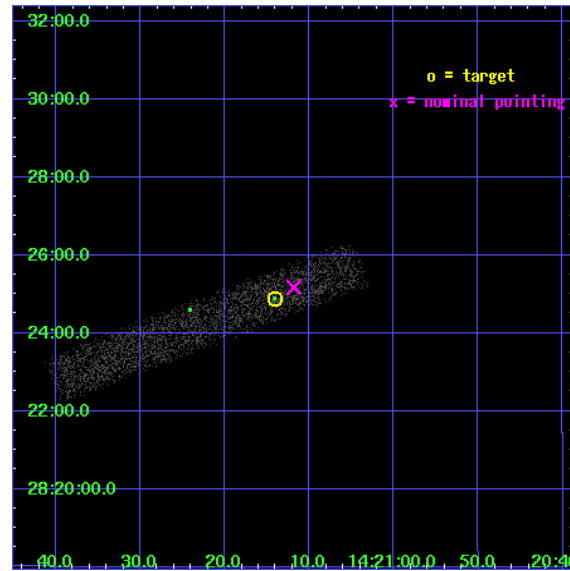
L2 Processing Date : Aug 4 2006

Contents

1	Front	2
2	OBI	3
2.1	OBI	3
2.1.1	Images	3
2.1.2	Bias	3
2.1.3	Parameters	4
2.1.4	Events	4
2.2	Compared Parameters	5
2.3	Aspect	6
2.4	Star Slots	9
2.4.1	Slot 3	9
2.4.2	Slot 4	10
2.4.3	Slot 5	11
2.4.4	Slot 6	12
2.4.5	Slot 7	13
2.5	FID Slots	14
2.5.1	Slot 0	14
2.5.2	Slot 1	15
2.5.3	Slot 2	16
3	Point Sources	17
A	Summary	18
A.1	Status	18
A.2	Comments	18

1 Front

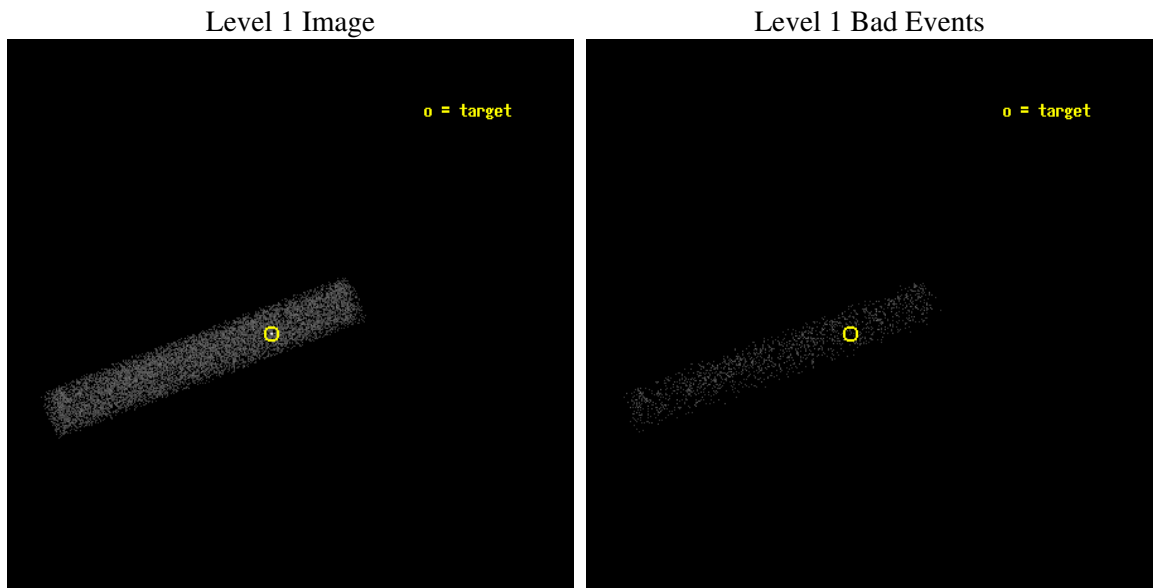
seq_num	700818
obs_id	4139
title	CHANDRA OBSERVATIONS OF THE FIRST SAMPLE OF RADIO-LOUD NARROW LINE SEYFERT I GALAXIES
observer	Dr. Sally Laurent-Muehleisen
object	FIRST J142114+282452
dtcycle	0
cycle	P
ra_targ	215.30875
dec_targ	28.4145
ra_nom	215.29936821356
dec_nom	28.419439133277
roll_nom	159.26413569241
revision	2
ontime	10362.000154406
livetime	9397.7871888317
ontime7	10362.000154406
l2events	4951



2 OBI

2.1 OBI

2.1.1 Images



2.1.2 Bias

Chip 7



2.1.3 Parameters

obi_num	0
ascdsver	7.6.8.1
caldbver	3.2.2
date	2006-08-04T18:09:19
revision	2

sched_exp_time	10200.000000
ontime	11178.471812308
ontime7	11178.471812308
l1events	12497

2.1.4 Events

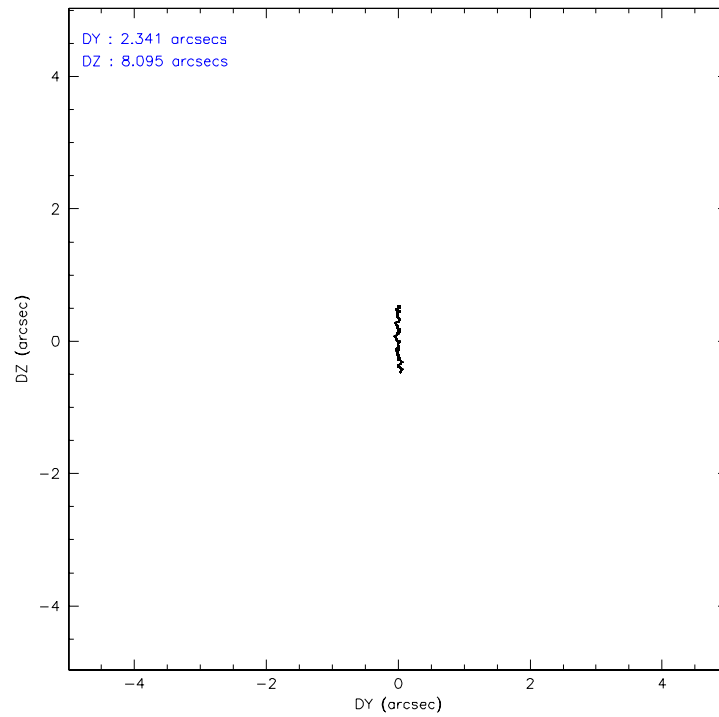
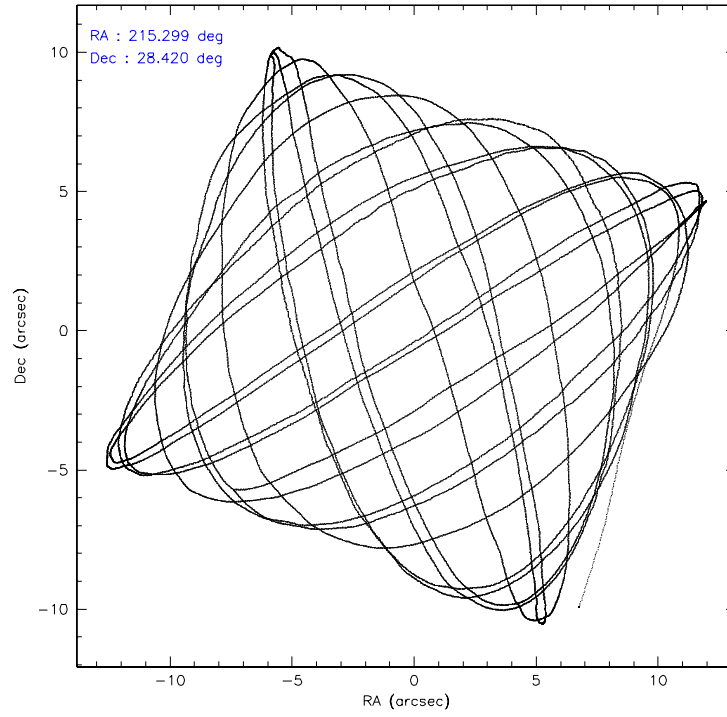
	ccd 7
level 1 events	12497
rejected events	7345
rejected %	58%

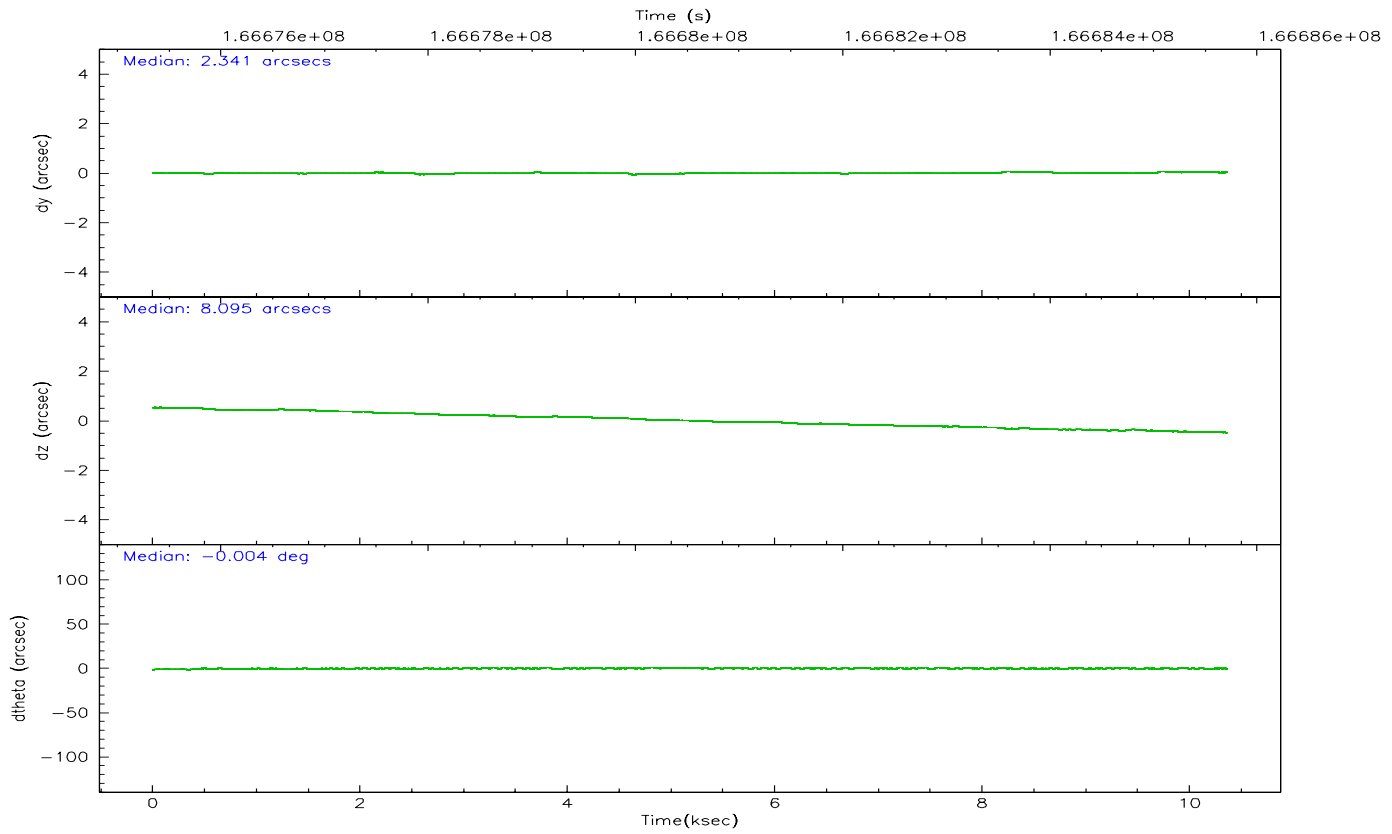
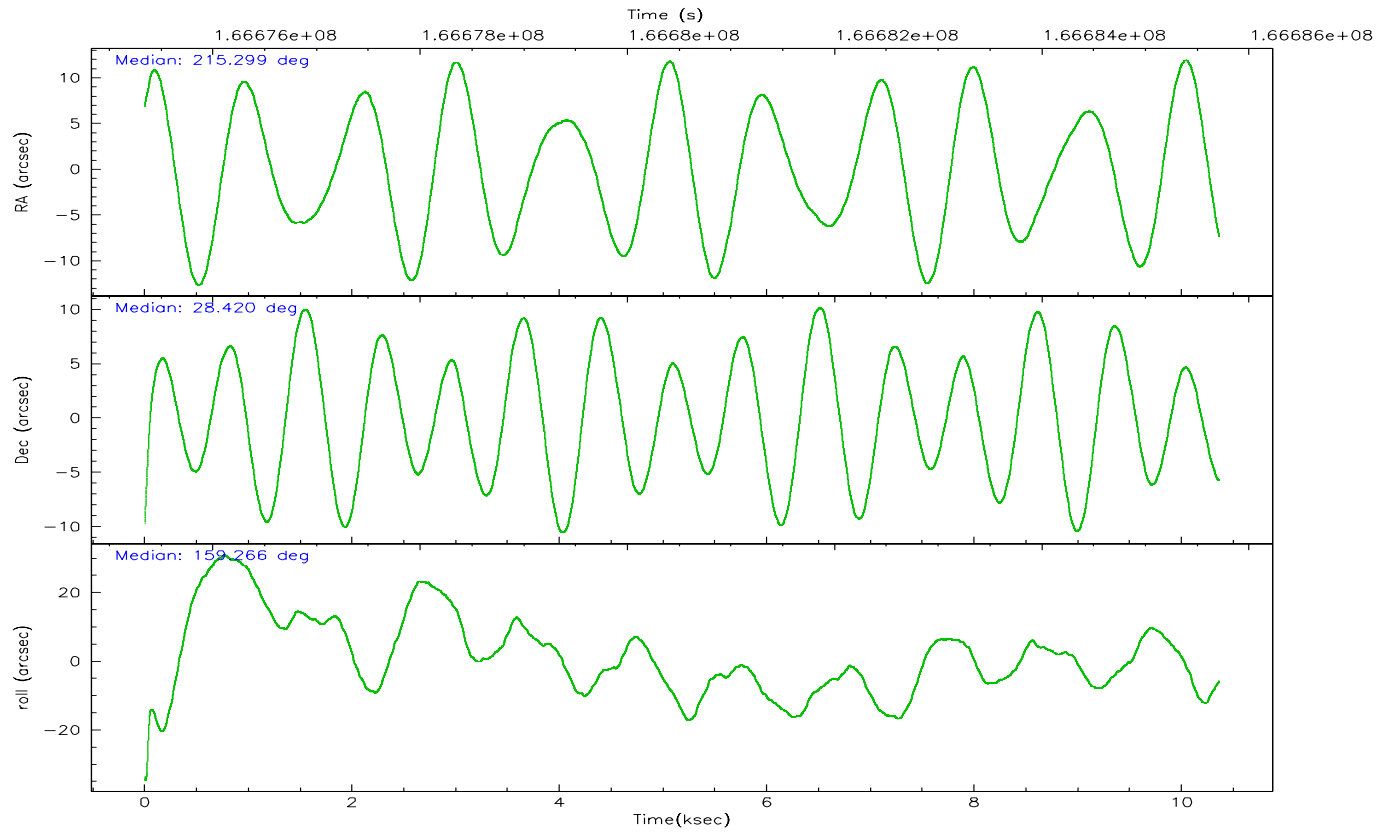
	ccd 7
grade 0 events	552
	4%
grade 1 events	8
	0%
grade 2 events	1209
	9%
grade 3 events	608
	4%
grade 4 events	524
	4%
grade 5 events	885
	7%
grade 6 events	2618
	20%
grade 7 events	6093
	48%

2.2 Compared Parameters

Parameter	Planned	Actual	Parameter	Planned	Actual
Instrument	ACIS	ACIS	Obspar format version number	6	6
Detector	ACIS-7	ACIS-7	Obspar file type	PREDICTED	ACTUAL
Grating	NONE	NONE	Obspar update status	NONE	UPDATED
Data mode	FAINT	FAINT	On-chip summing requested	N	N
Observation mode	POINTING	POINTING	Subarray requested	1/8	1/8
Pointing RA	215.329797	215.2993682135597	Subarray start row	0	449
Pointing Dec	28.424205	28.41943913327734	Subarray row count	1024	128
Pointing Roll	159.093044	159.2641356924055	Alternating exposures requested	N	N
SIM focus pos (mm)	-0.684267	-0.6828225247311905	Primary exposure time	0.000000	0.4
SIM defocus (mm)	0	0.001444936568705701			
SIM translation stage pos (mm)	-190.132523	-190.1400660498719			
SIM translation stage offset (mm)	0	0.00754346686406393			
Observation start time	166675511.184000	166674489.99163			
Observation start date	2003-04-14T02:44:07	2003-04-14T02:28:09			
Observation end time	166685711.184000	166686414.32963			
Observation end date	2003-04-14T05:34:07	2003-04-14T05:46:54			
Read mode	TIMED	TIMED			

2.3 Aspect



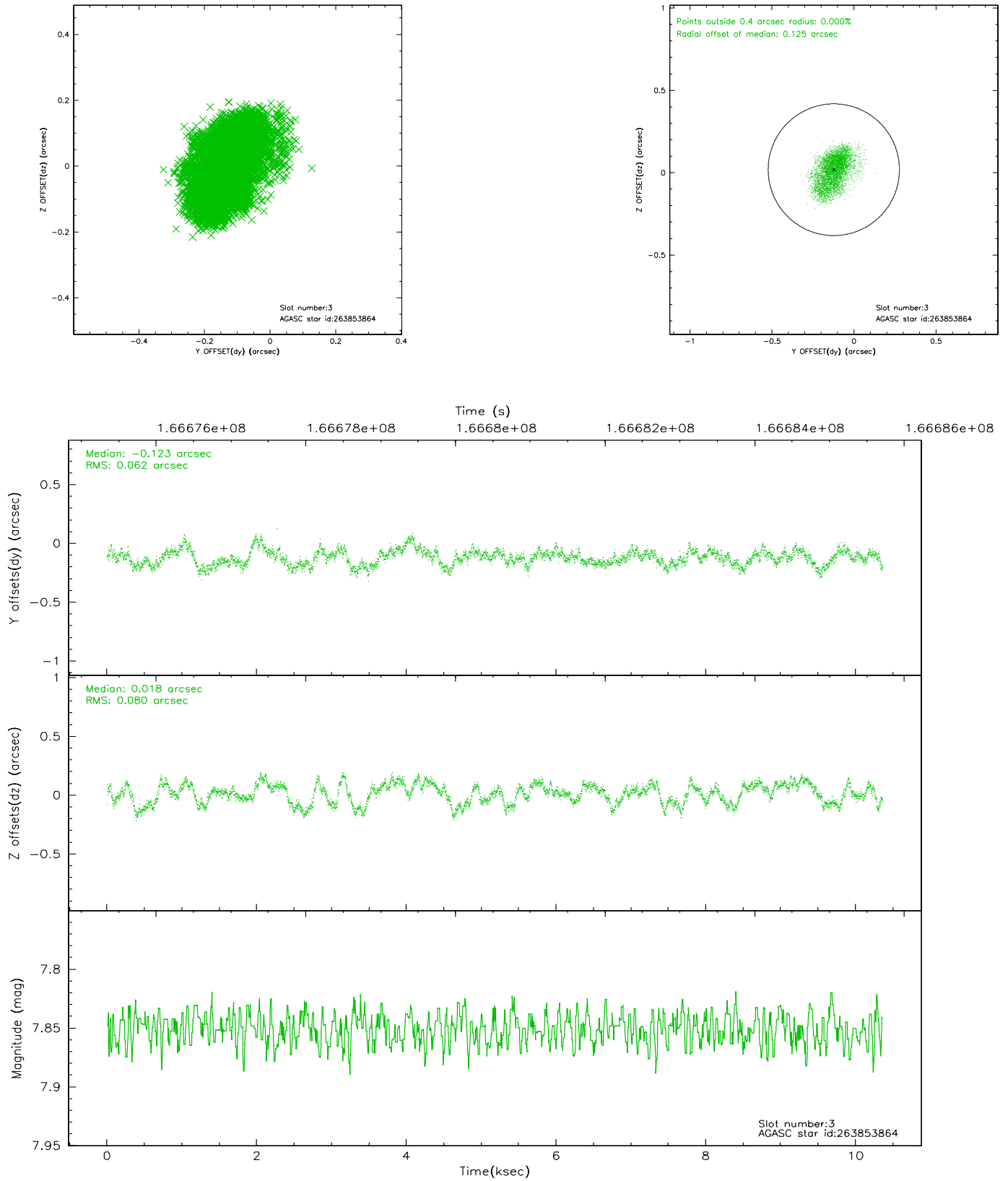


Slot Statistics

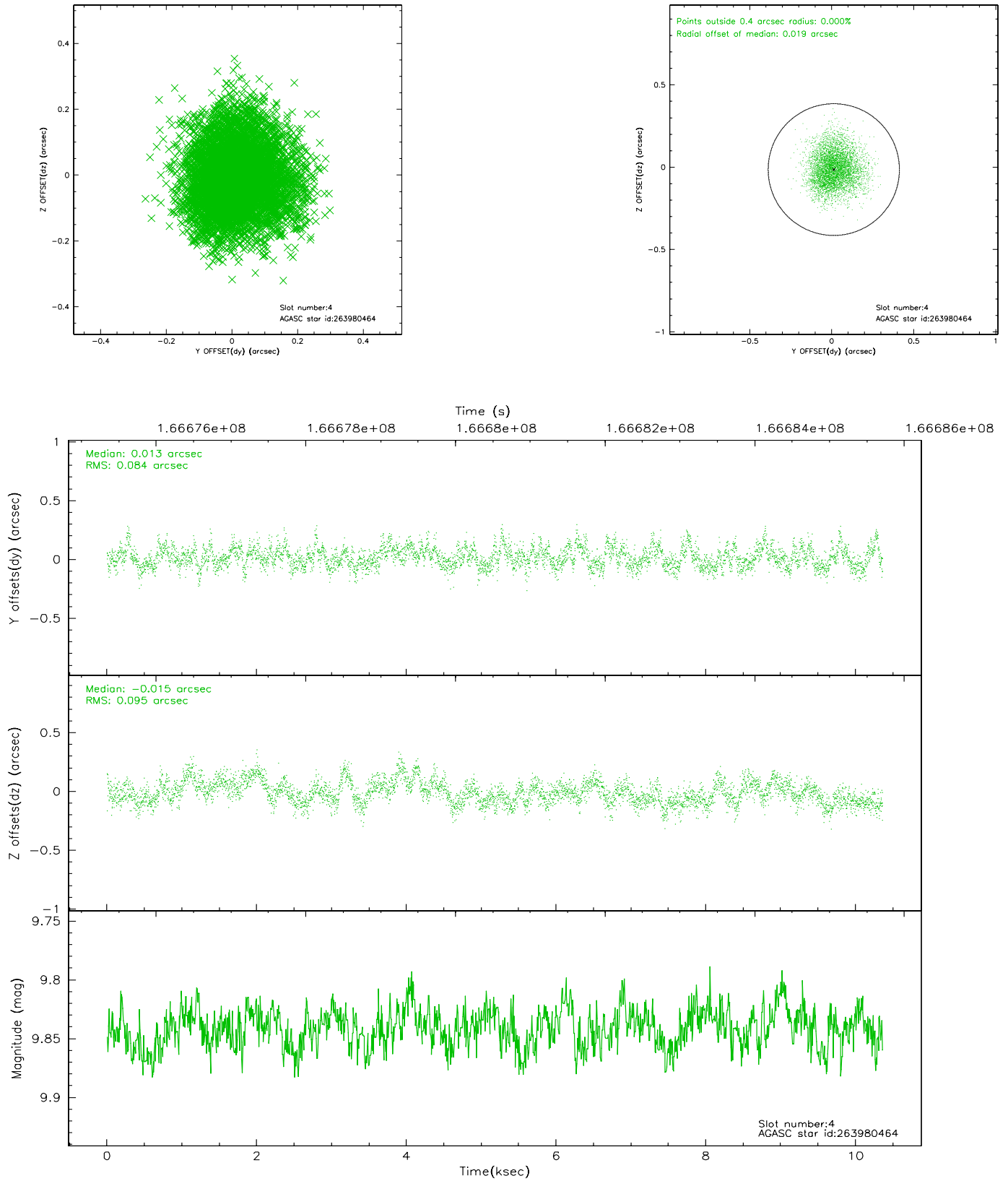
slot	status	id	mag	n_pts	med_dy	med_dz	dr1	dr2	ra	dec	mean_y	mean_z
0	FID	ACIS-S-2	7.11	2528	-0.010	0.014	0.007	0.010	0.000000	0.000000	-754.98	-1729.30
1	FID	ACIS-S-4	7.21	2528	-0.061	0.001	0.005	0.010	0.000000	0.000000	2158.02	178.65
2	FID	ACIS-S-5	7.24	2528	0.040	-0.006	0.006	0.010	0.000000	0.000000	-1807.12	172.89
3	GUIDE	263853864	7.85	5055	-0.123	0.018	0.110	0.173	214.640696	28.439377	2059.96	721.71
4	GUIDE	263980464	9.84	5045	0.013	-0.015	0.136	0.218	215.549780	28.128620	-1030.76	744.73
5	GUIDE	263982872	11.46	4961	0.076	0.048	0.463	0.718	216.026641	28.783920	-1589.45	-1999.59
6	GUIDE	263984360	9.67	5056	0.016	0.046	0.130	0.214	216.041078	28.506456	-1994.01	-1085.74
7	GUIDE	263985384	9.34	5044	0.006	-0.108	0.175	0.245	215.066586	28.496503	871.02	53.15

2.4 Star Slots

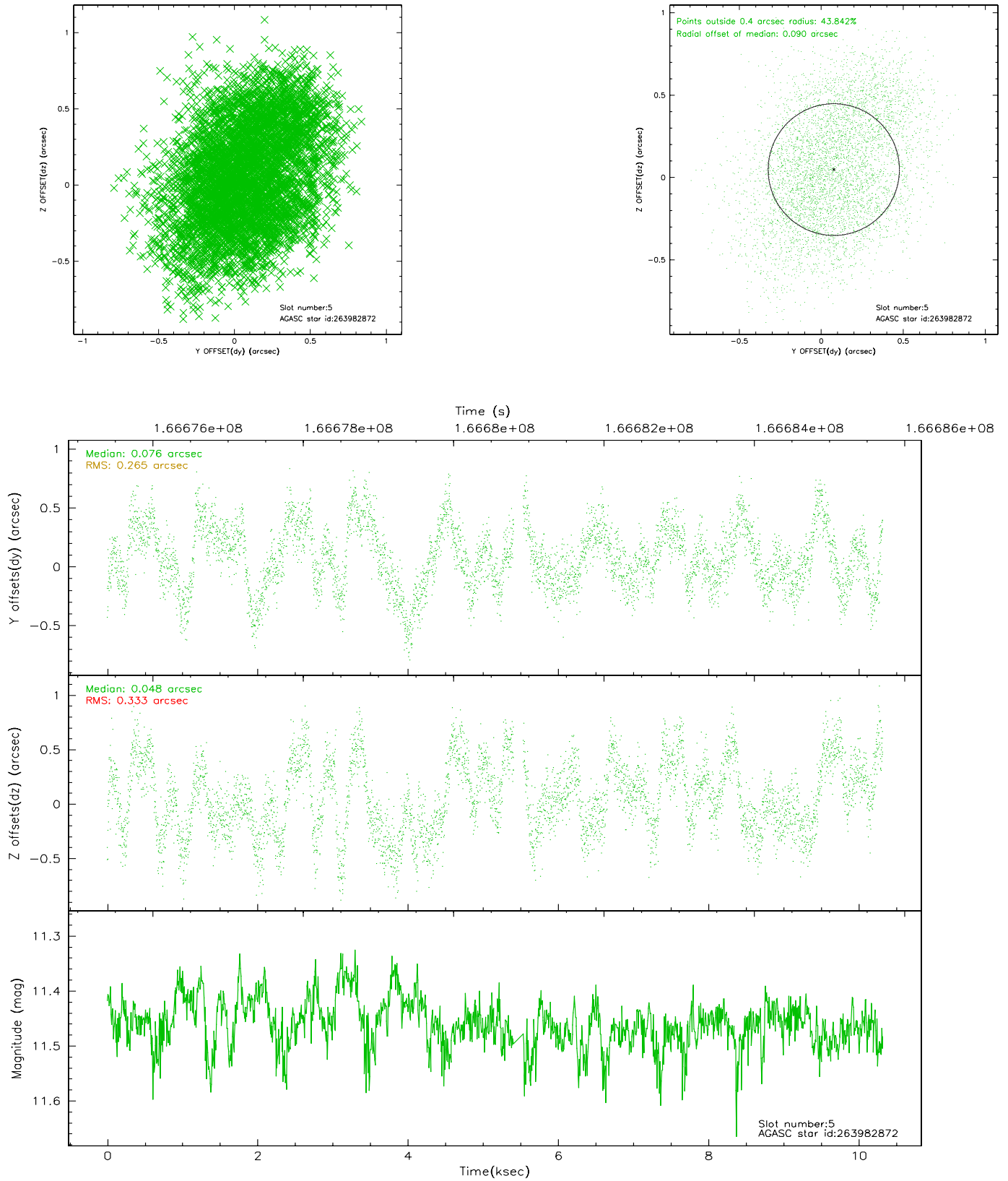
2.4.1 Slot 3



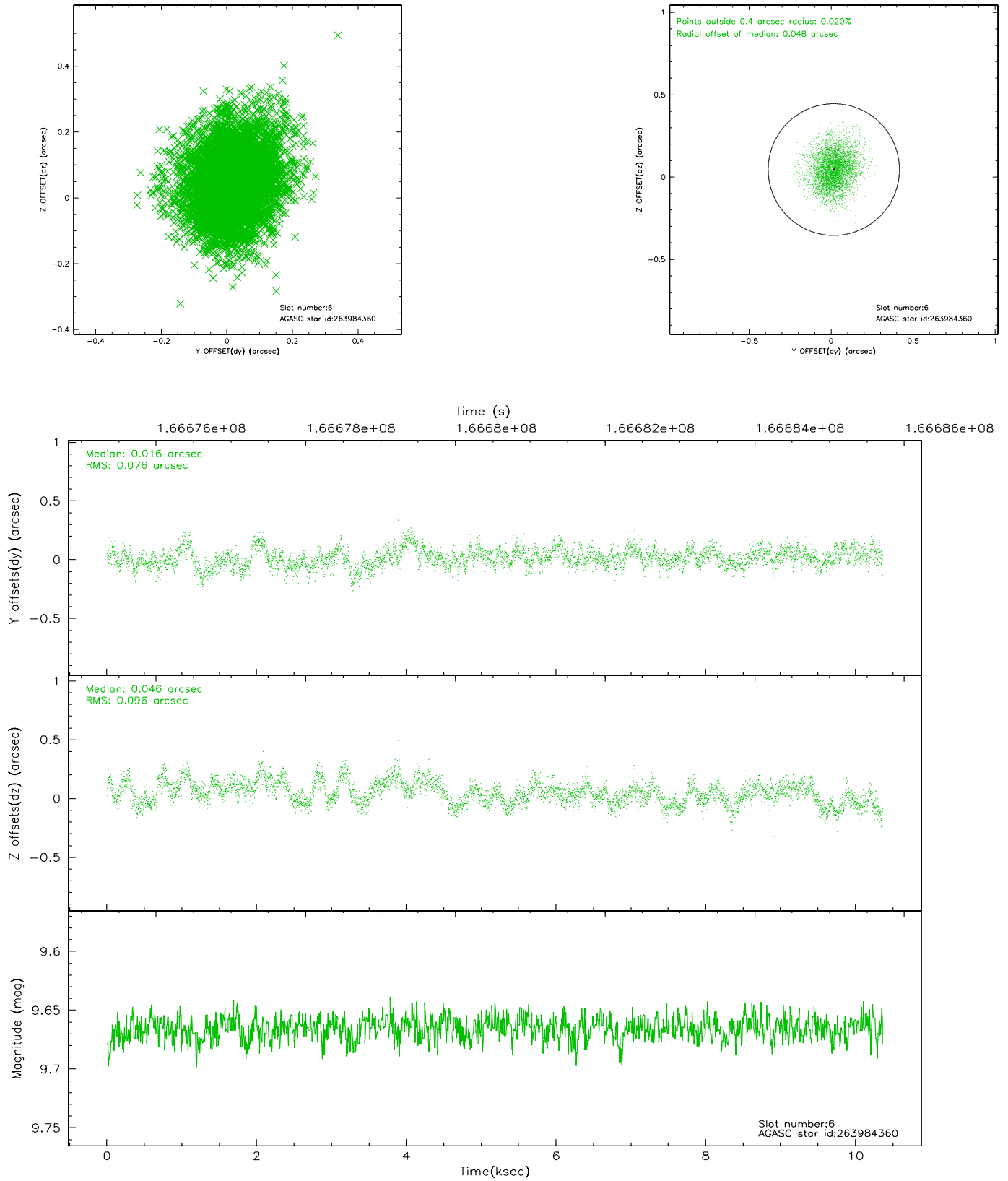
2.4.2 Slot 4



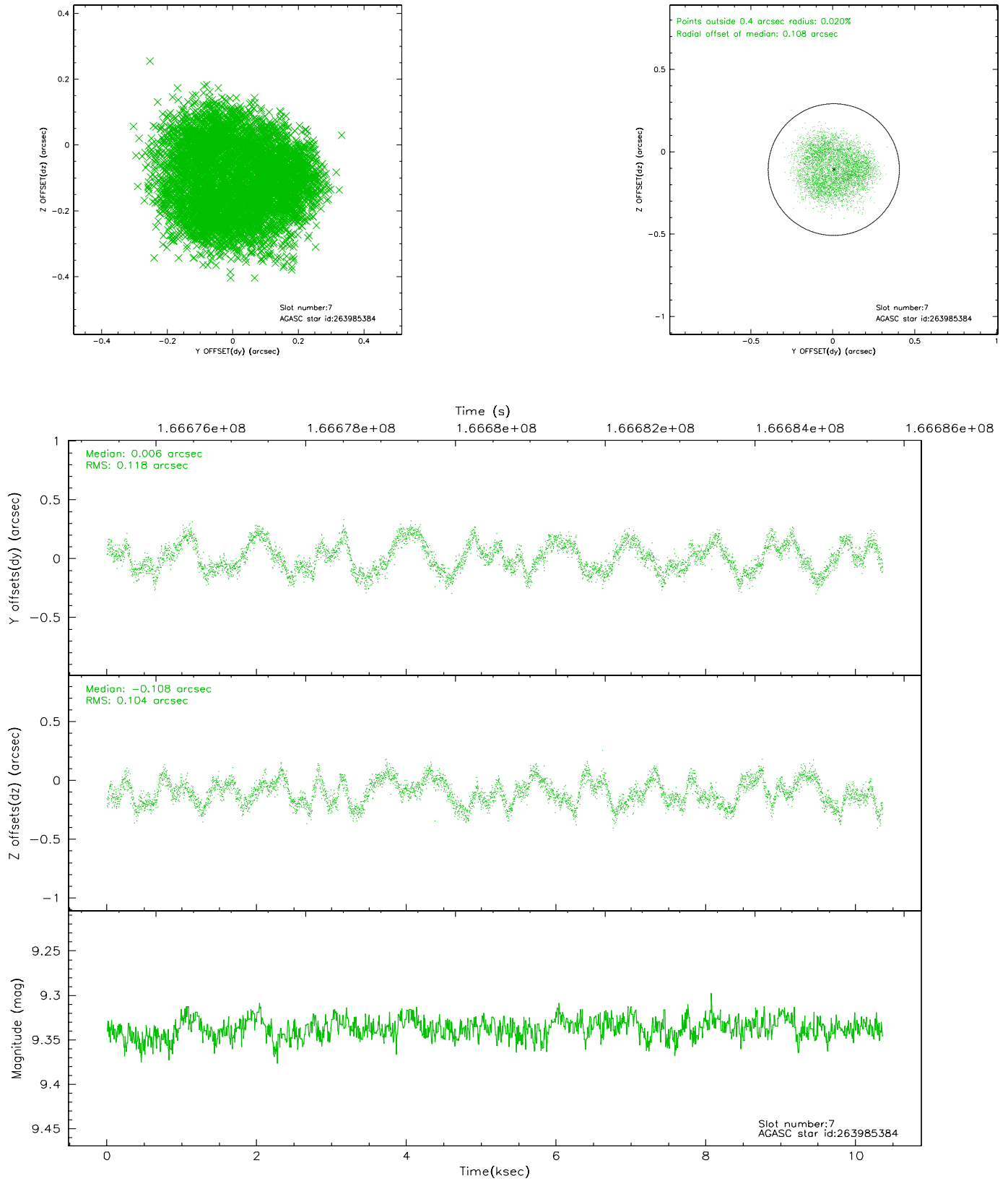
2.4.3 Slot 5



2.4.4 Slot 6

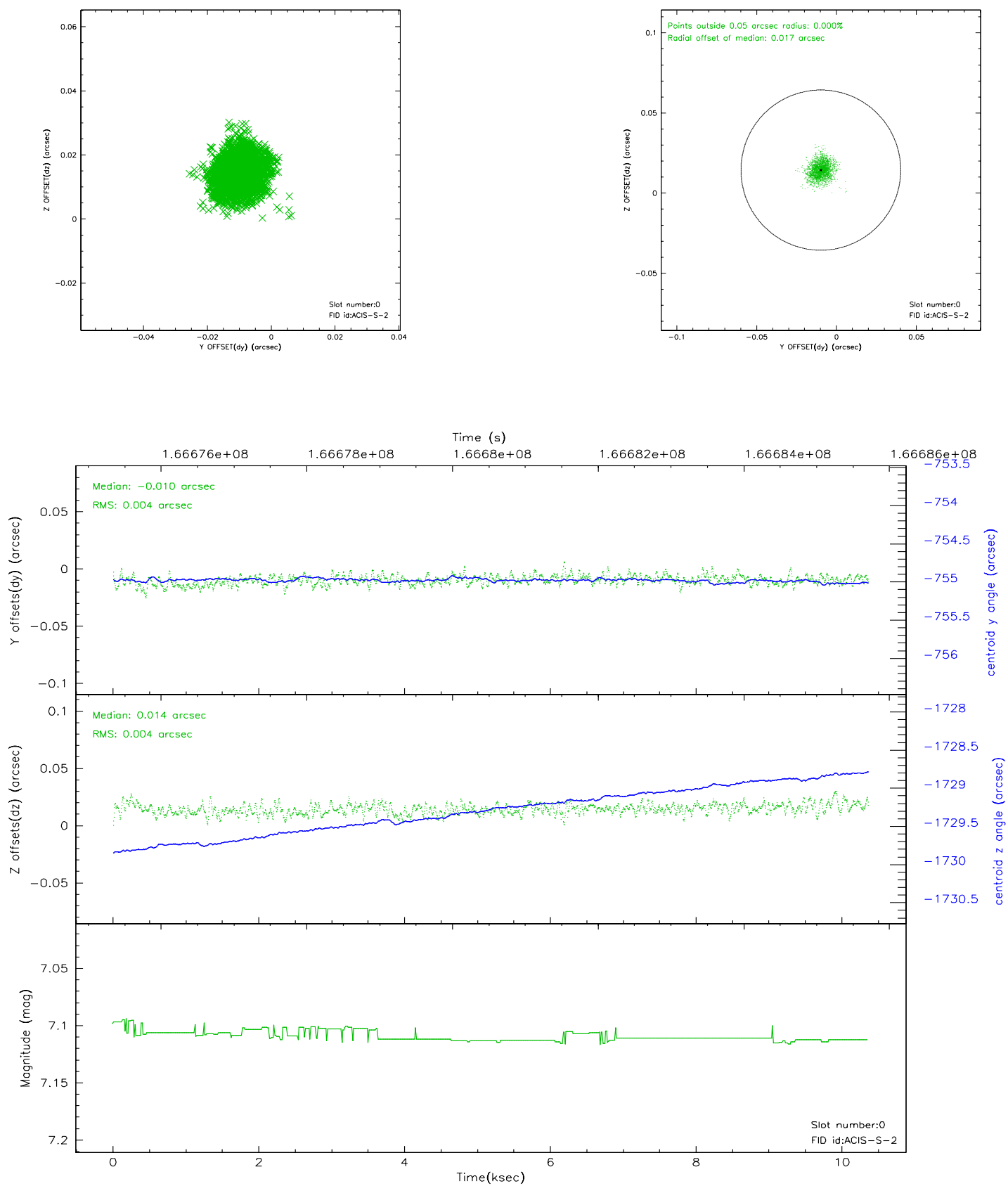


2.4.5 Slot 7

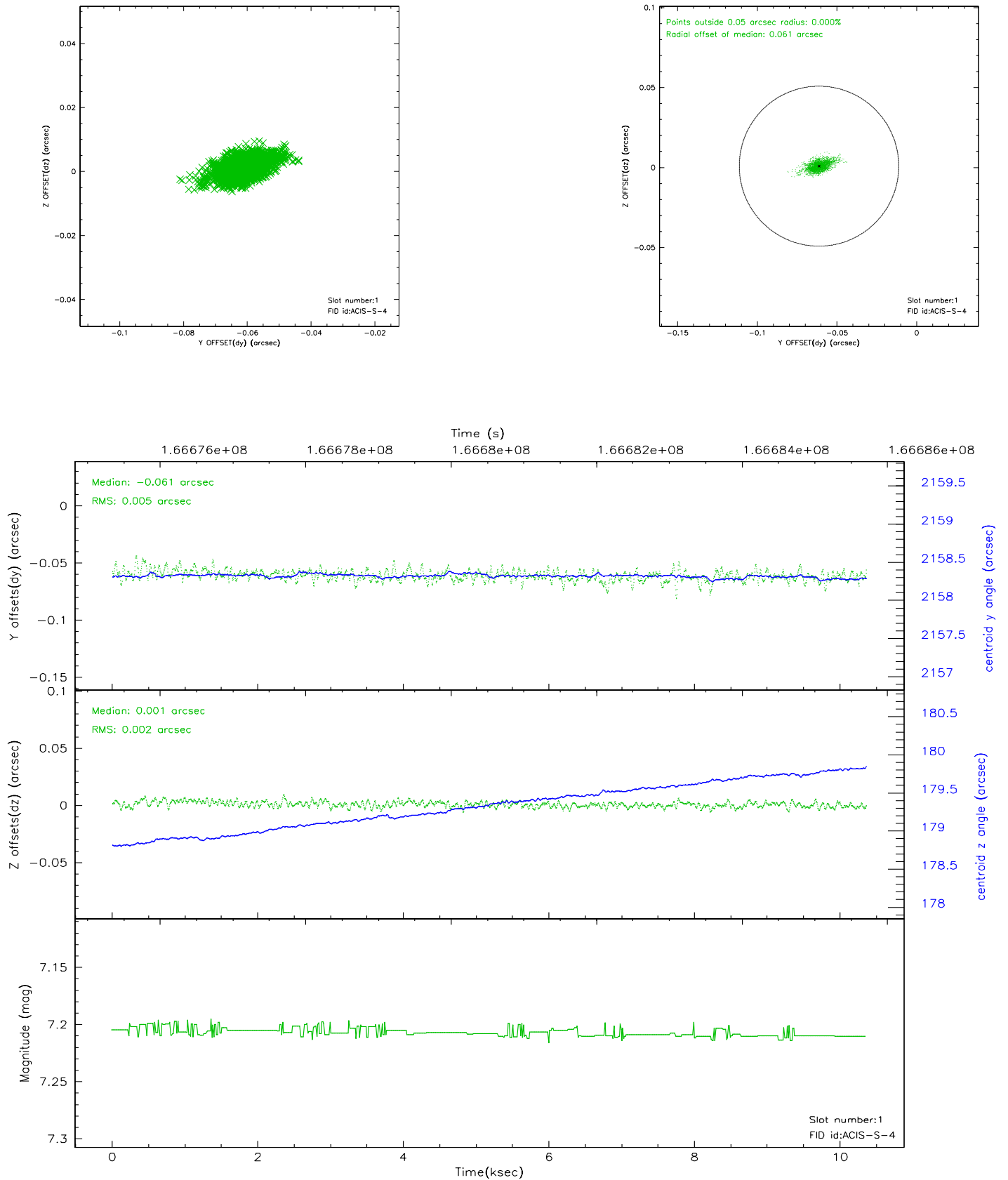


2.5 FID Slots

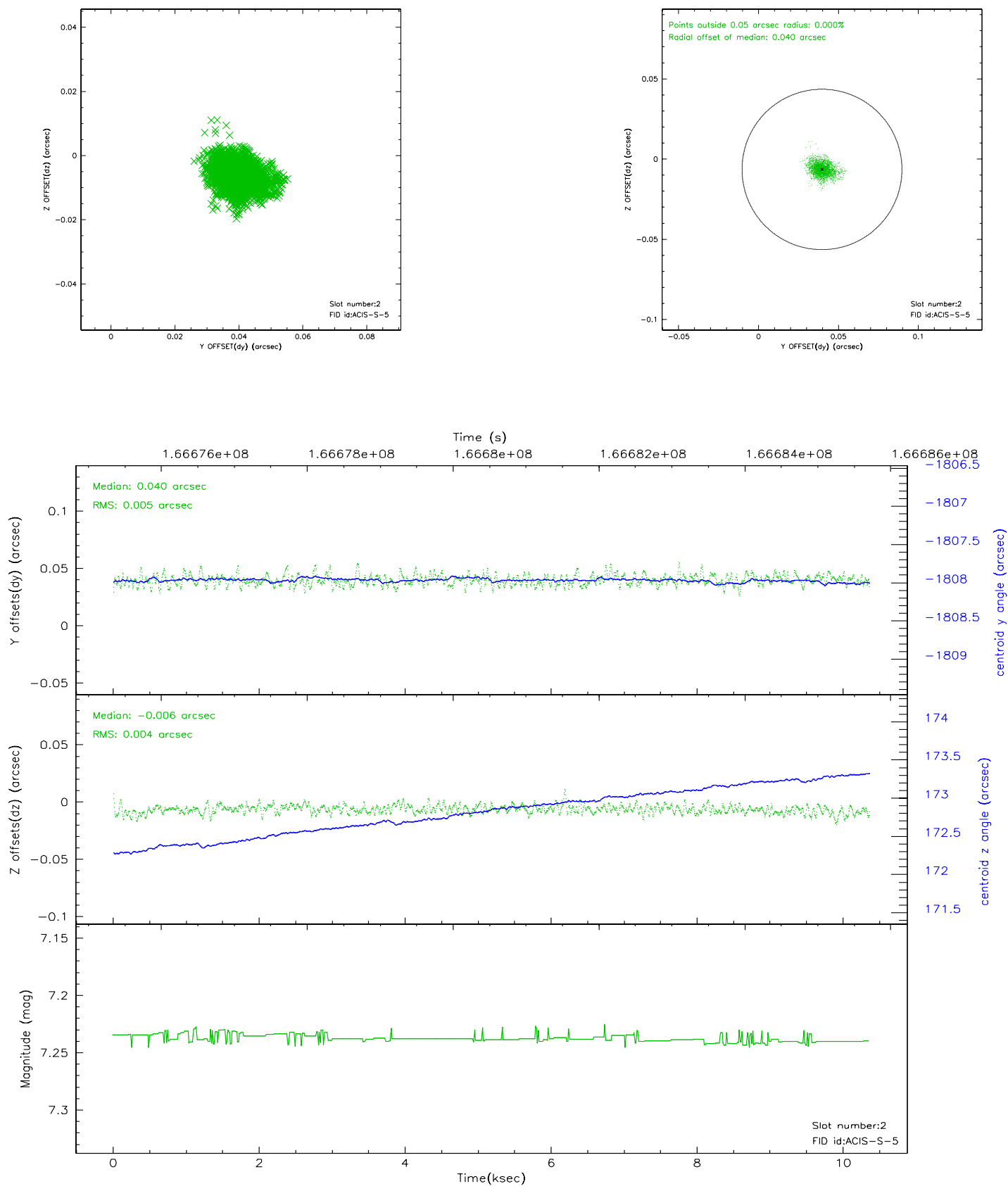
2.5.1 Slot 0



2.5.2 Slot 1



2.5.3 Slot 2



3 Point Sources

2.74 arcmin



A Summary

A.1 Status

V&V Scientist	Beth Sundheim
V&V Date (YYYY-MM-DD)	2006.08.04
V&V Edition	1
V&V Disposition and Status	OK
V&V Charge Time	10.362

A.2 Comments

Star in slot 5 has a high RMS deviation, but is within current spec.