

# V&V Reference Report

## L2 ASCDS Version : 7.6.8

Observation 4137 - L2 Version 001  
Chandra X-Ray Center

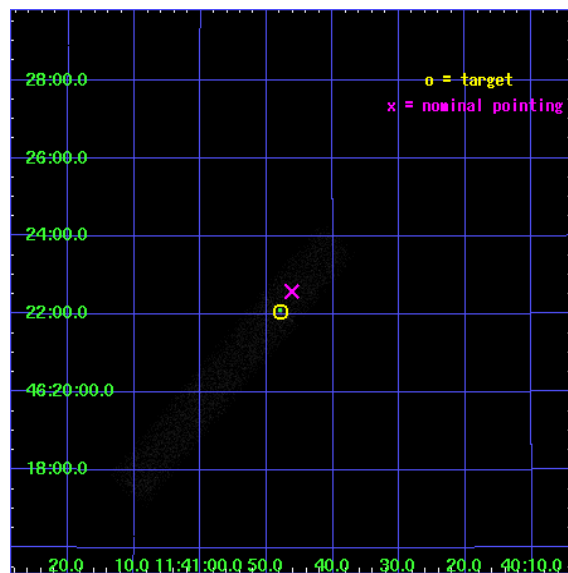
L2 Processing Date : Jul 20 2006

## Contents

<b>1</b>	<b>Front</b>	<b>2</b>
<b>2</b>	<b>OBI</b>	<b>3</b>
2.1	OBI . . . . .	3
2.1.1	Images . . . . .	3
2.1.2	Bias . . . . .	3
2.1.3	Parameters . . . . .	4
2.1.4	Events . . . . .	4
2.2	Compared Parameters . . . . .	5
2.3	Aspect . . . . .	6
2.4	Star Slots . . . . .	9
2.4.1	Slot 3 . . . . .	9
2.4.2	Slot 4 . . . . .	10
2.4.3	Slot 5 . . . . .	11
2.4.4	Slot 6 . . . . .	12
2.4.5	Slot 7 . . . . .	13
2.5	FID Slots . . . . .	14
2.5.1	Slot 0 . . . . .	14
2.5.2	Slot 1 . . . . .	15
2.5.3	Slot 2 . . . . .	16
<b>3</b>	<b>Point Sources</b>	<b>17</b>
<b>A</b>	<b>Summary</b>	<b>18</b>
A.1	Status . . . . .	18
A.2	Comments . . . . .	18

# 1 Front

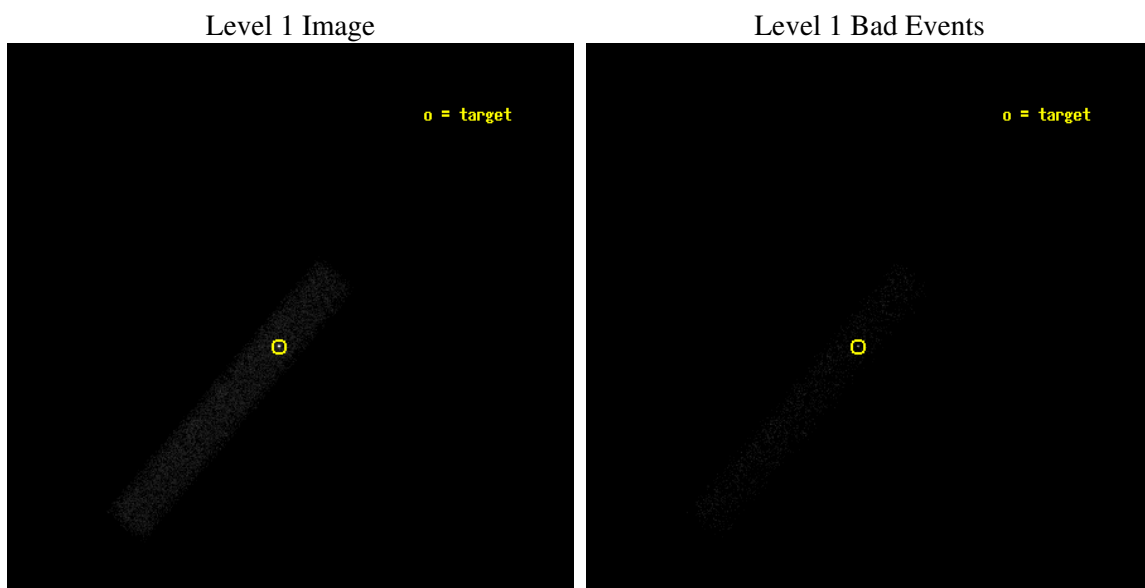
seq_num	700816
obs_id	4137
title	CHANDRA OBSERVATIONS OF THE FIRST SAMPLE OF RADIO-LOUD NARROW LINE SEYFERT I GALAXIES
observer	Dr. Sally Laurent-Muehleisen
object	FIRST J114047+462204
dtcycle	0
cycle	P
ra_targ	175.199583
dec_targ	46.368
ra_nom	175.19254060946
dec_nom	46.376282999858
roll_nom	130.25531095127
revision	2
ontime	12303.200183332
livetime	11158.353150129
ontime7	12303.200183332
l2events	10856



## 2 OBI

### 2.1 OBI

#### 2.1.1 Images



#### 2.1.2 Bias

Chip 7



### 2.1.3 Parameters

obi_num	0
ascdsver	7.6.8
caldbver	3.2.2
date	2006-07-21T00:28:29
revision	2

sched_exp_time	12120.000000
ontime	13111.551090539
ontime7	13111.551090539
l1events	20214

### 2.1.4 Events

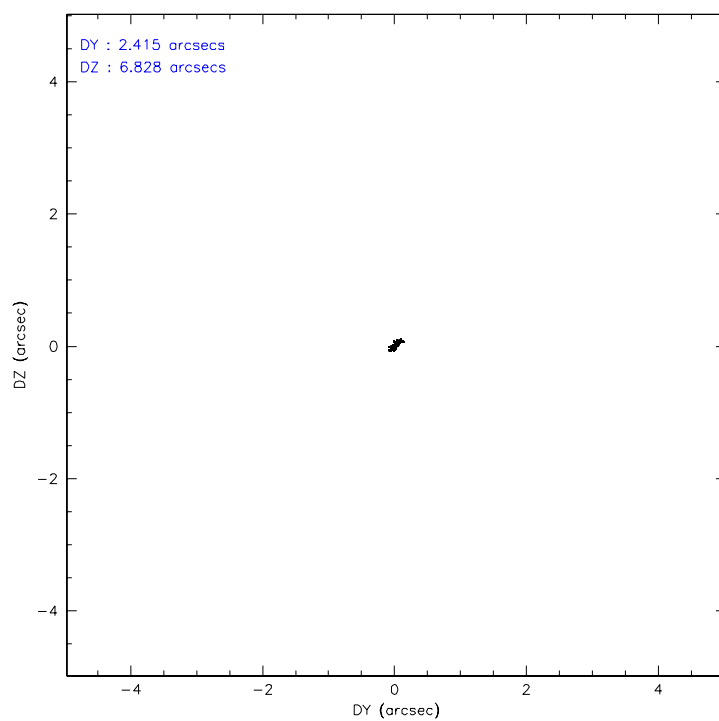
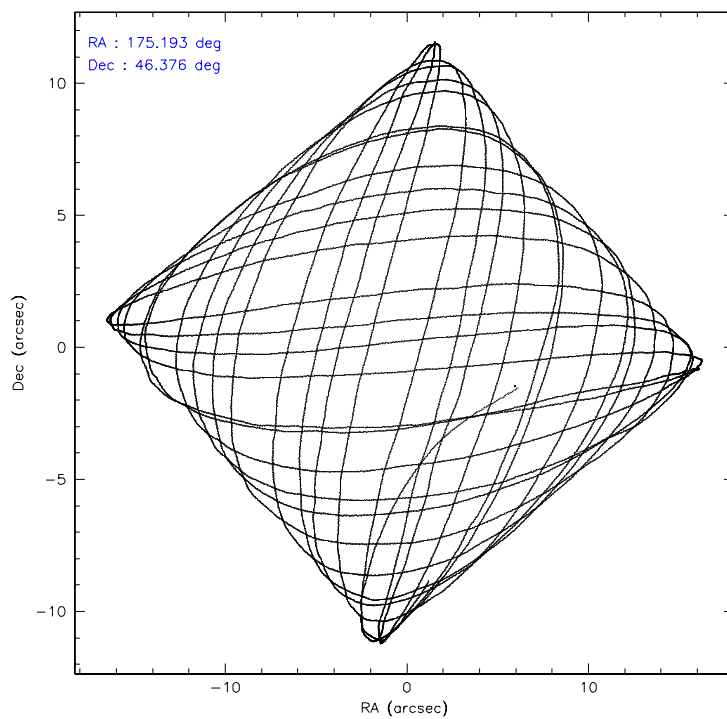
	<b>ccd 7</b>
level 1 events	20214
rejected events	9098
rejected %	45%

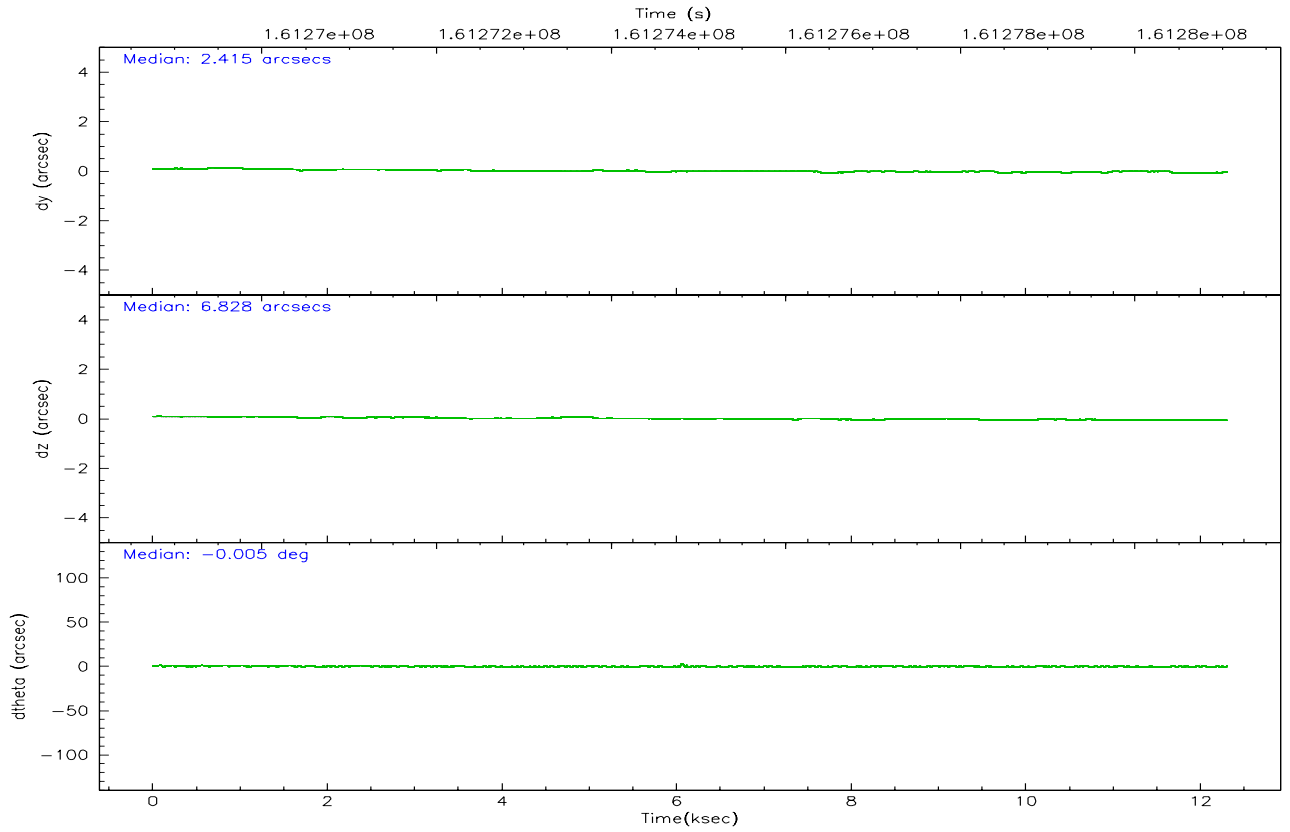
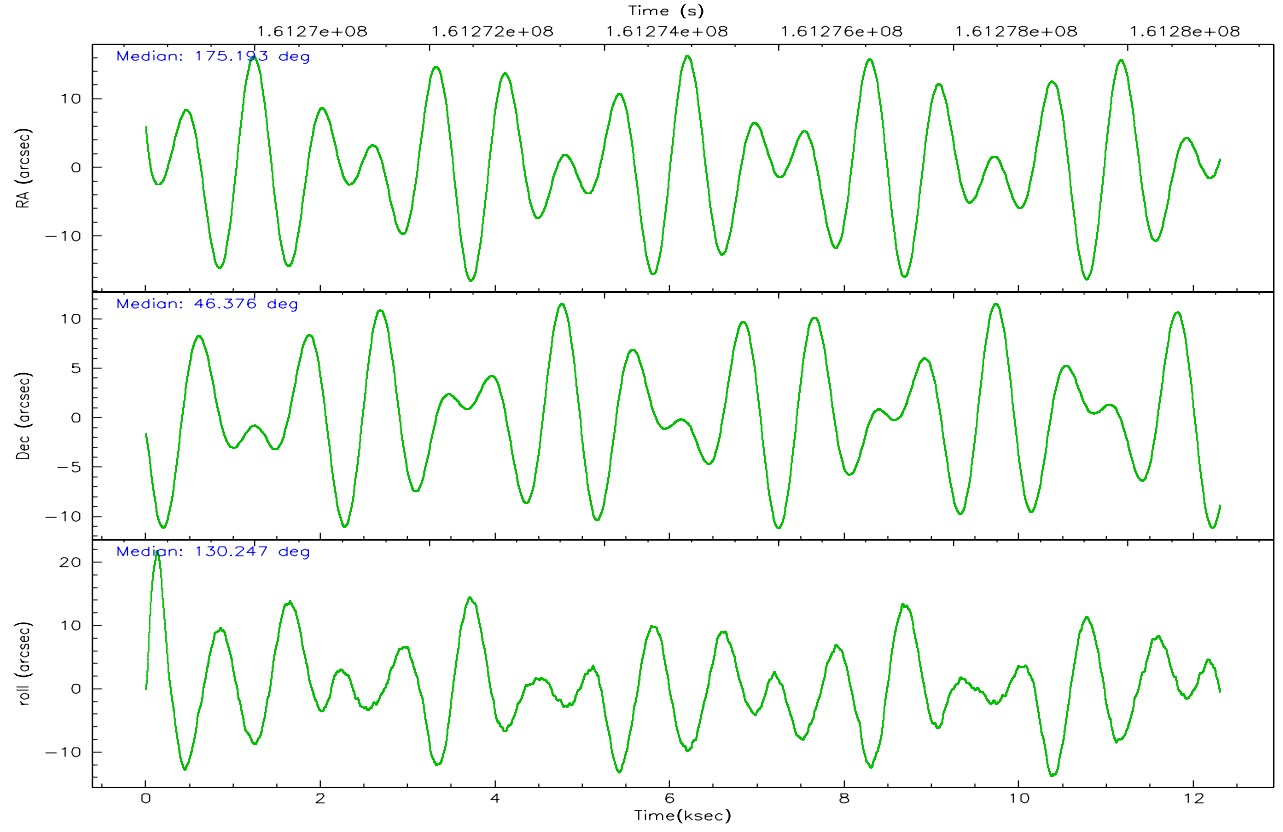
	<b>ccd 7</b>
grade 0 events	2355
	11%
grade 1 events	41
	0%
grade 2 events	2636
	13%
grade 3 events	1257
	6%
grade 4 events	1203
	5%
grade 5 events	1107
	5%
grade 6 events	4125
	20%
grade 7 events	7490
	37%

## 2.2 Compared Parameters

Parameter	Planned	Actual	Parameter	Planned	Actual
Instrument	ACIS	ACIS	Obspar format version number	6	6
Detector	ACIS-7	ACIS-7	Obspar file type	PREDICTED	ACTUAL
Grating	NONE	NONE	Obspar update status	NONE	UPDATED
Data mode	FAINT	FAINT	On-chip summing requested	N	N
Observation mode	POINTING	POINTING	Subarray requested	1/8	1/8
Pointing RA	175.229860	175.1925406094617	Subarray start row	0	449
Pointing Dec	46.367499	46.37628299985802	Subarray row count	1024	128
Pointing Roll	130.071678	130.2553109512743	Alternating exposures requested	N	N
SIM focus pos (mm)	-0.684267	-0.6828225247311905	Primary exposure time	0.000000	0.4
SIM defocus (mm)	0	0.001444936568705701			
SIM translation stage pos (mm)	-190.132523	-190.1400660498719			
SIM translation stage offset (mm)	0	0.00754346686406393			
Observation start time	161268939.184000	161267912.01396			
Observation start date	2003-02-10T12:54:35	2003-02-10T12:38:32			
Observation end time	161281059.184000	161281527.60203			
Observation end date	2003-02-10T16:16:35	2003-02-10T16:25:27			
Read mode	TIMED	TIMED			

## 2.3 Aspect





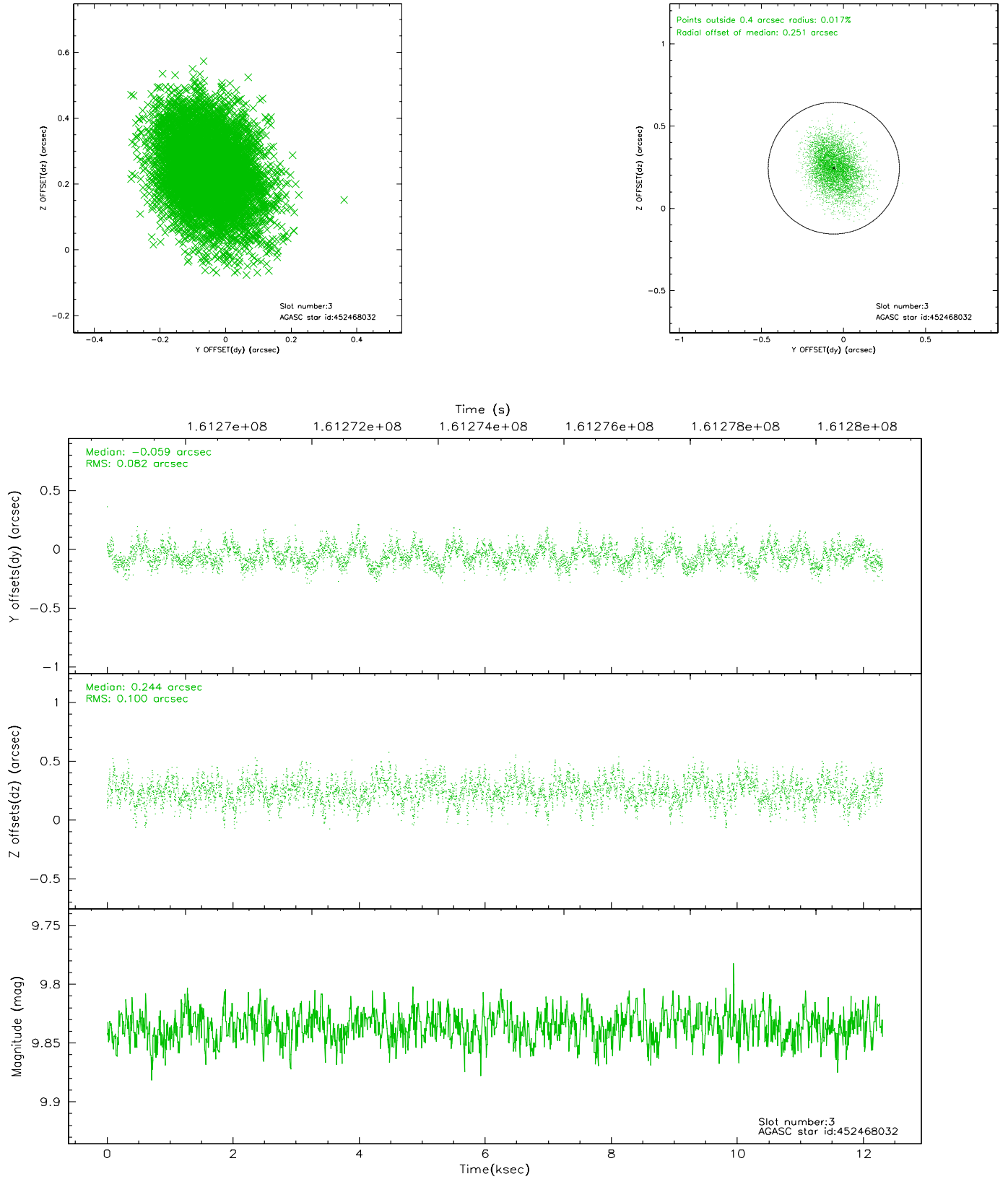
### Slot Statistics

slot	status	id	mag	n_pts	med_dy	med_dz	dr1	dr2	ra	dec	mean_y	mean_z
0	FID	ACIS-S-2	7.12	3001	-0.027	0.021	0.007	0.011	0.000000	0.000000	-755.06	-1727.99
1	FID	ACIS-S-4	7.21	3001	-0.045	0.007	0.005	0.009	0.000000	0.000000	2158.00	180.10
2	FID	ACIS-S-5	7.24	3001	0.040	-0.020	0.006	0.011	0.000000	0.000000	-1807.33	174.16
3	GUIDE	452468032	9.84	5993	-0.059	0.244	0.137	0.228	176.120312	46.601291	-763.66	-2234.86
4	GUIDE	452474296	9.44	5994	0.007	-0.065	0.113	0.174	175.196051	46.137456	-579.20	597.58
5	GUIDE	452474760	8.94	6003	0.030	0.066	0.075	0.120	175.631749	46.506608	-255.41	-1085.69
6	GUIDE	452476032	9.85	5997	-0.042	-0.025	0.111	0.177	174.570645	46.673773	1897.45	532.31
7	GUIDE	452477176	9.42	5993	0.060	-0.213	0.126	0.208	175.031364	45.558768	-1905.05	2256.78

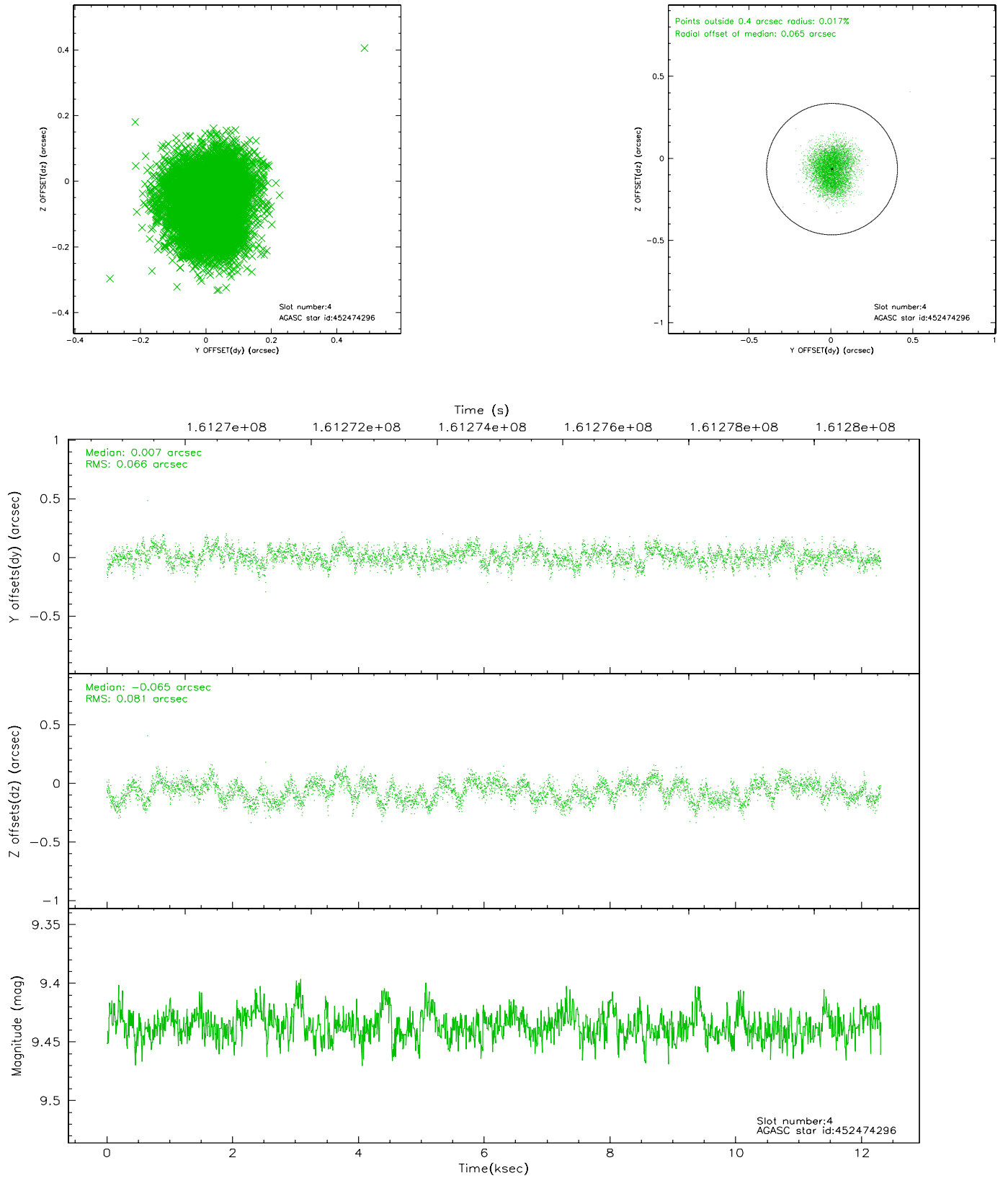


## 2.4 Star Slots

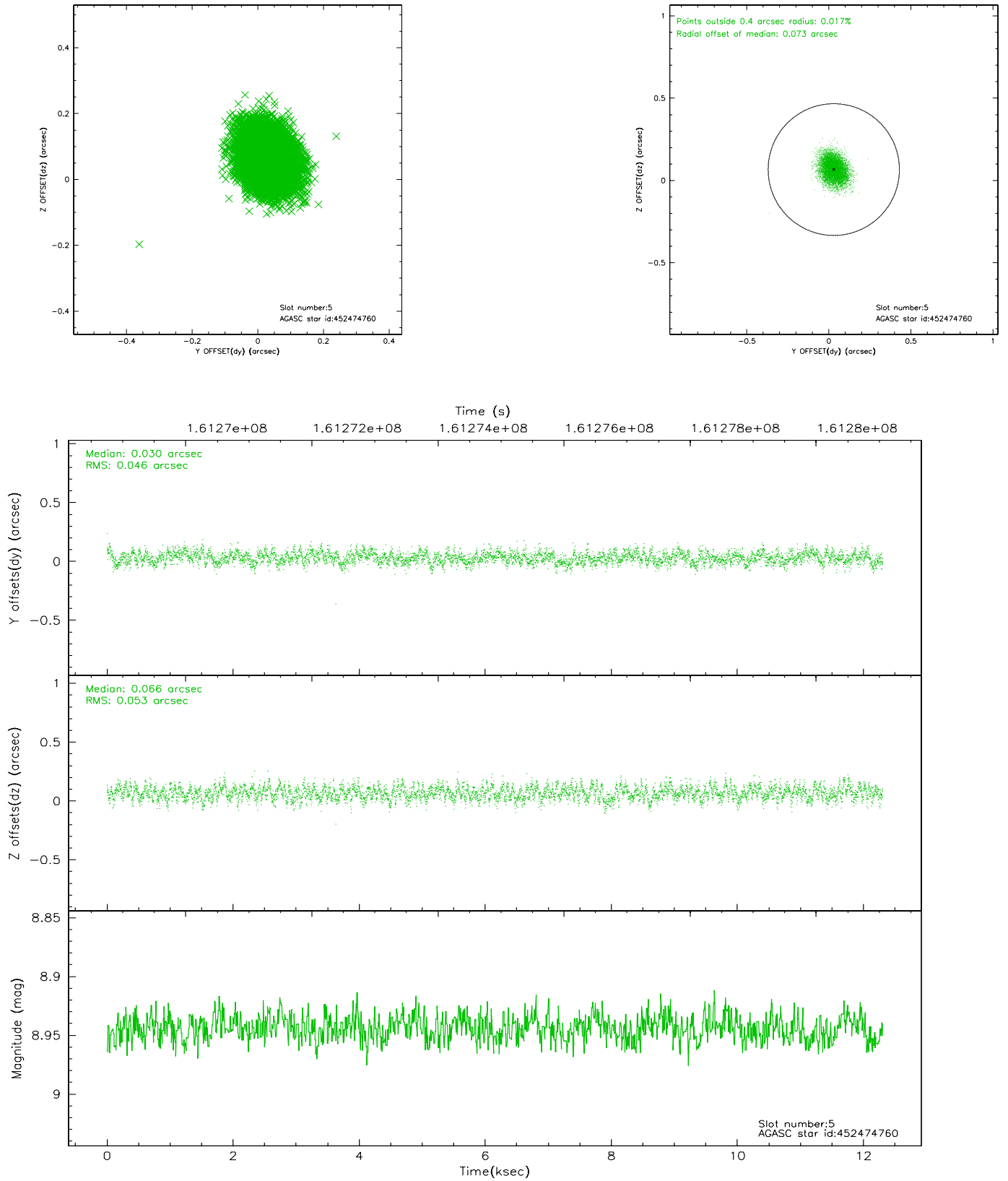
### 2.4.1 Slot 3



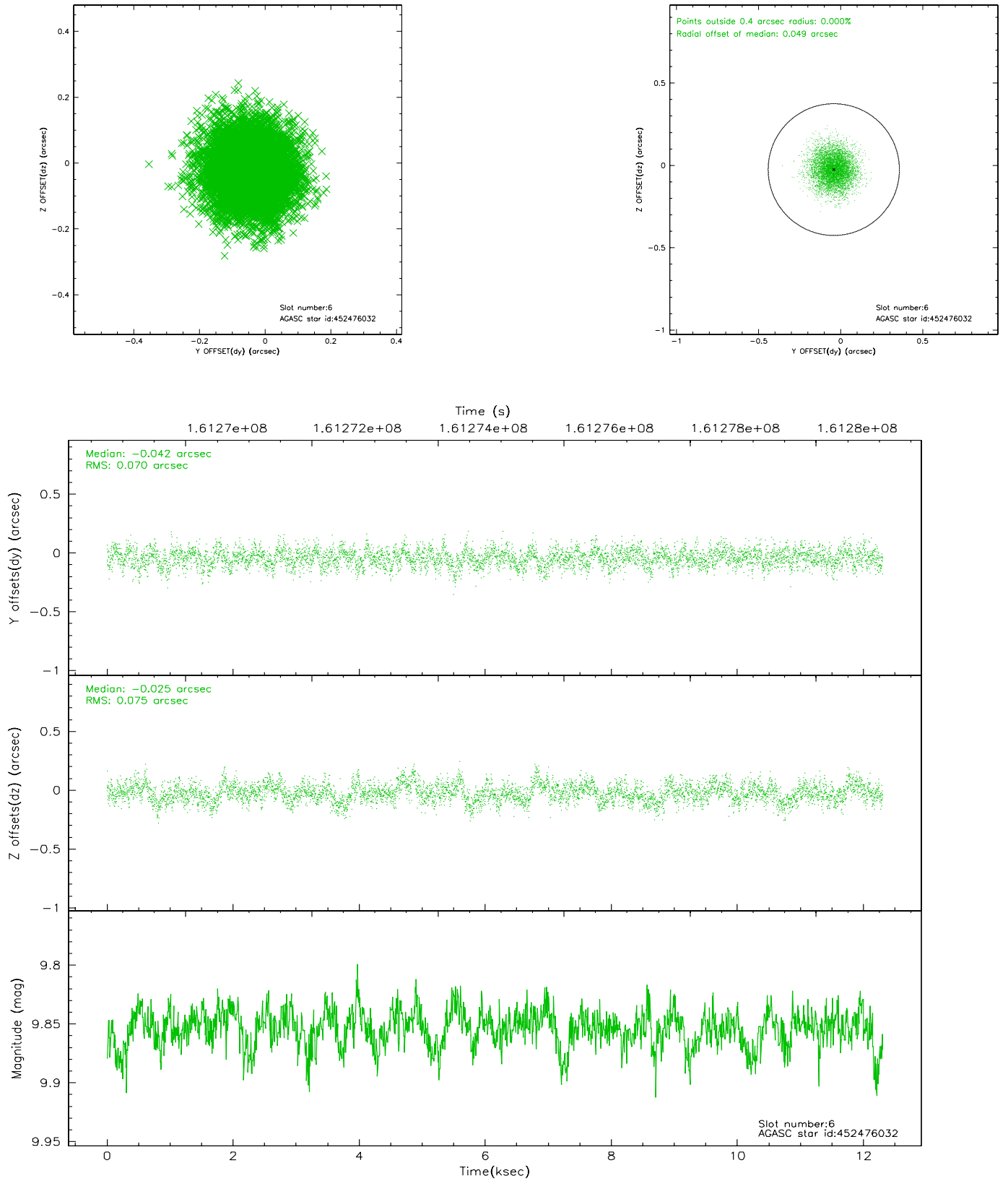
## 2.4.2 Slot 4



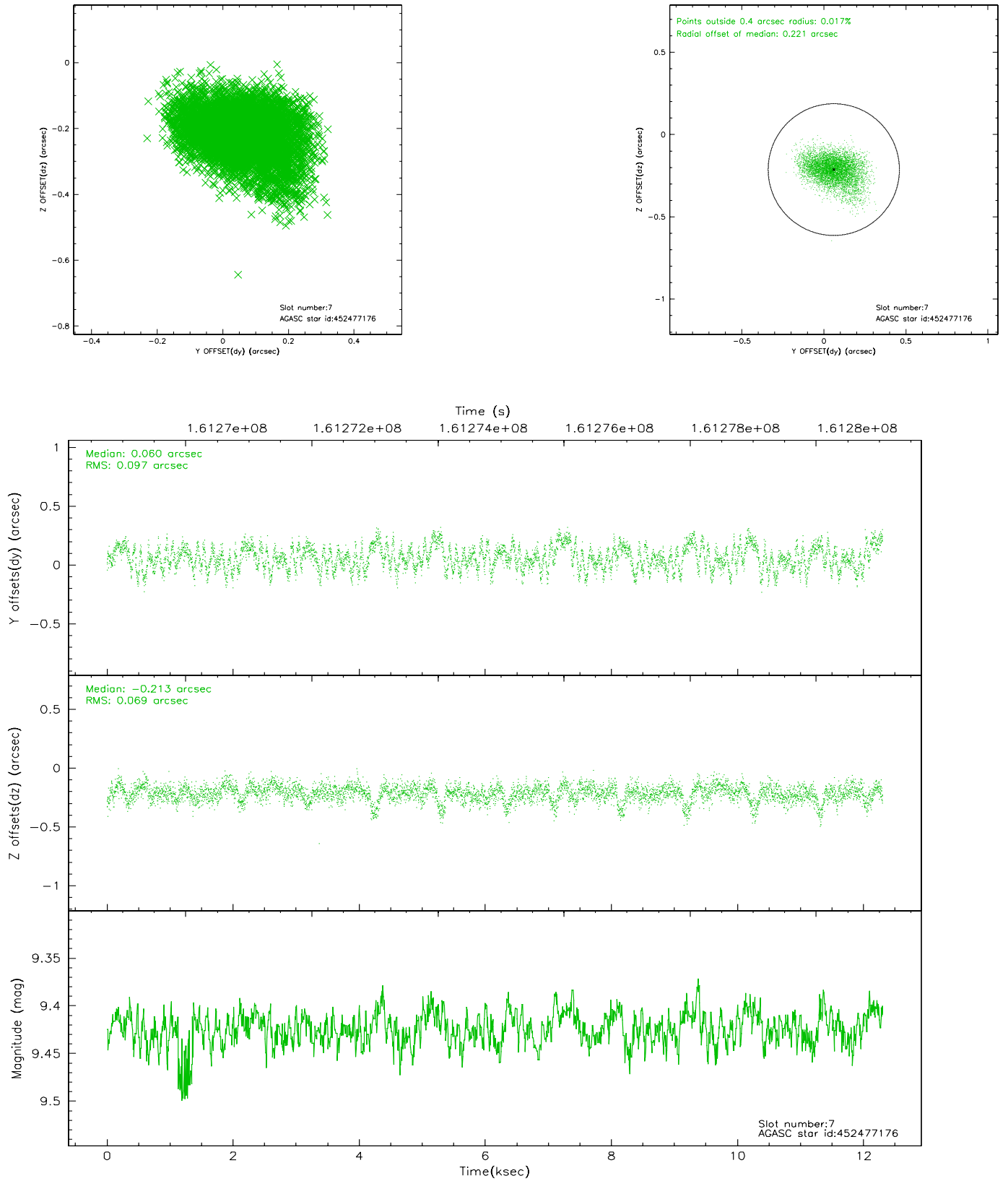
### 2.4.3 Slot 5



## 2.4.4 Slot 6

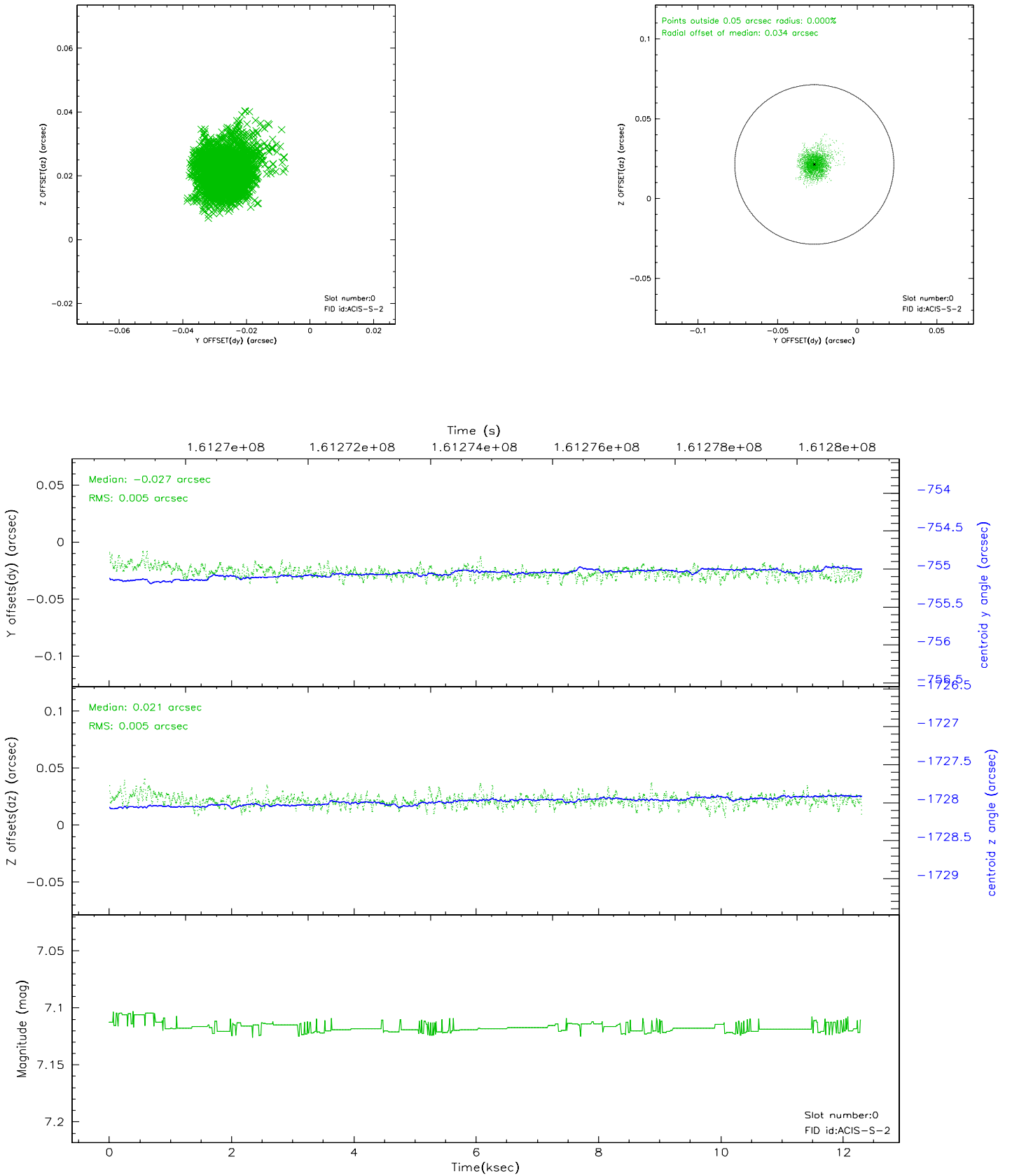


## 2.4.5 Slot 7

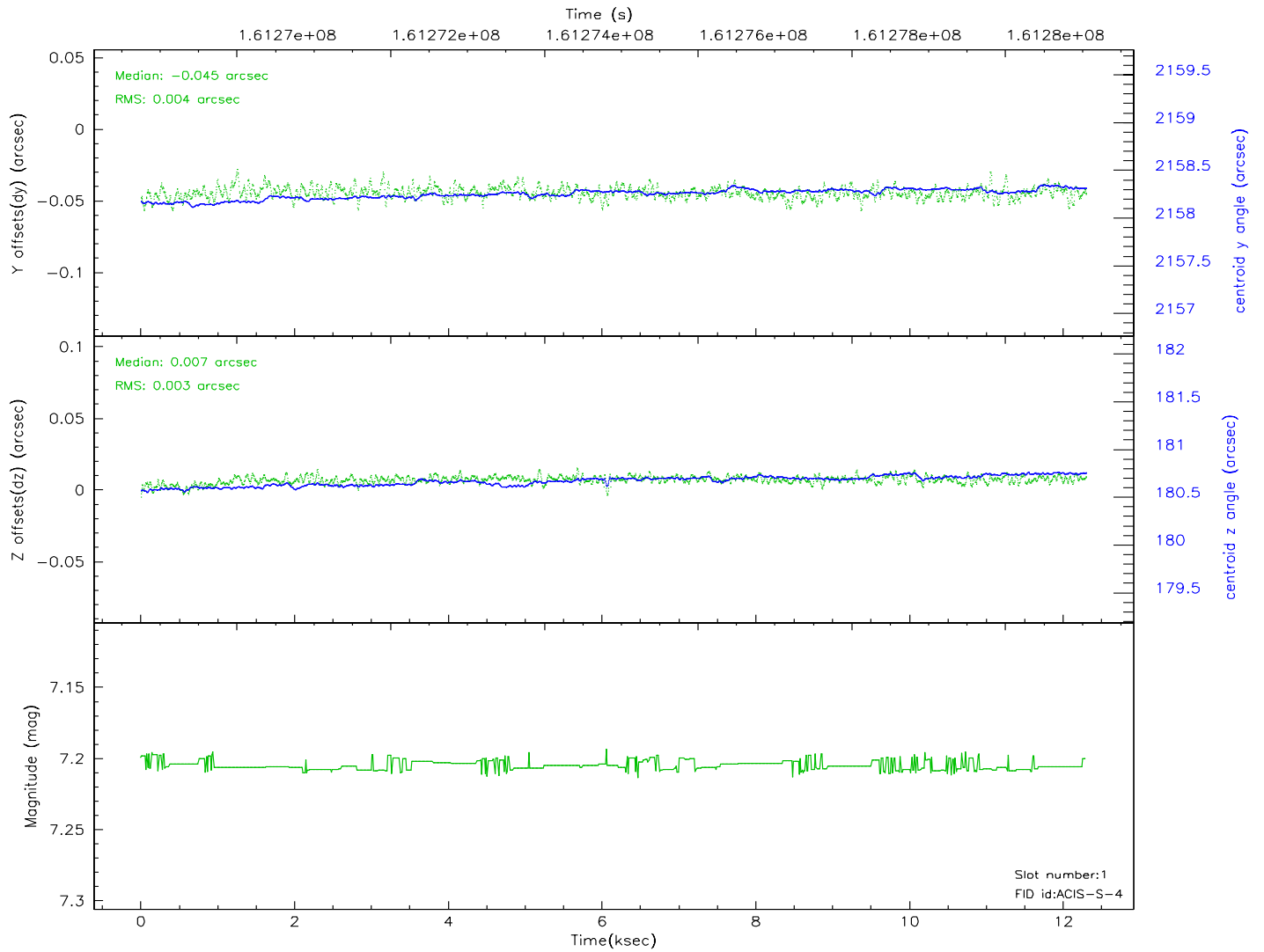
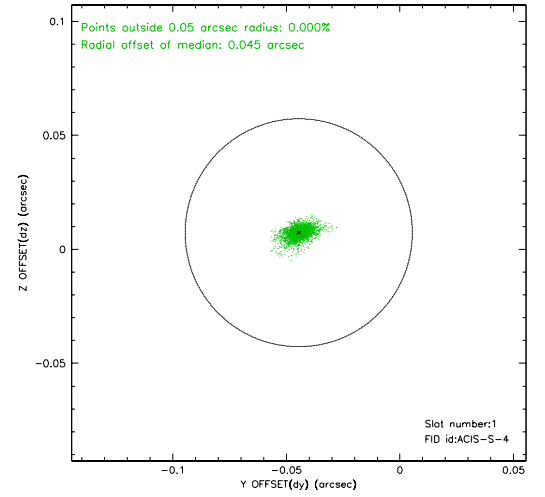
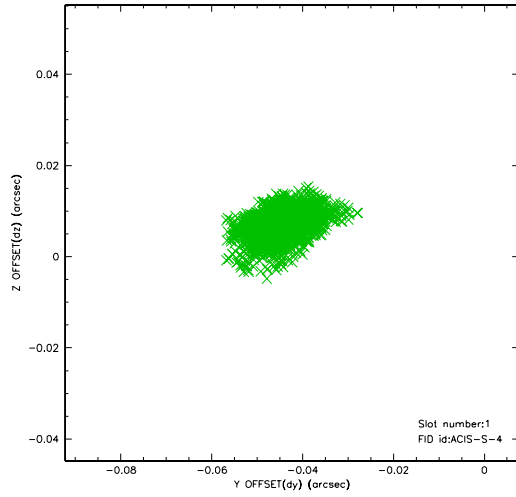


## 2.5 FID Slots

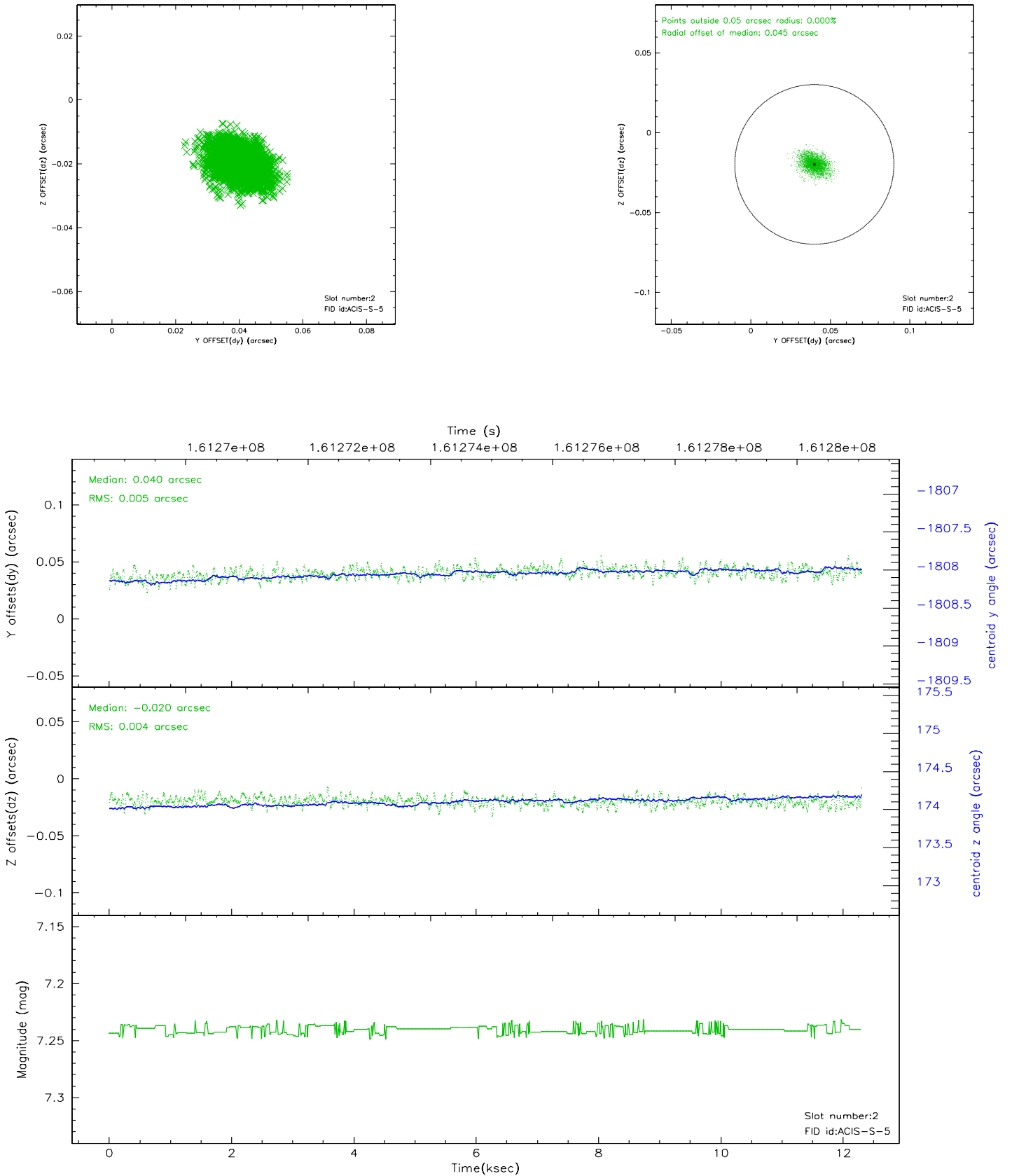
### 2.5.1 Slot 0



## 2.5.2 Slot 1



### 2.5.3 Slot 2





### 3 Point Sources

## A Summary

### A.1 Status

V&V Scientist	Jen Lauer
V&V Date (YYYY-MM-DD)	2006.07.21
V&V Edition	1
V&V Disposition and Status	OK
V&V Charge Time	12.303

### A.2 Comments