

V&V Reference Report

L2 ASCDS Version : 7.6.8

Observation 4136 - L2 Version 001
Chandra X-Ray Center

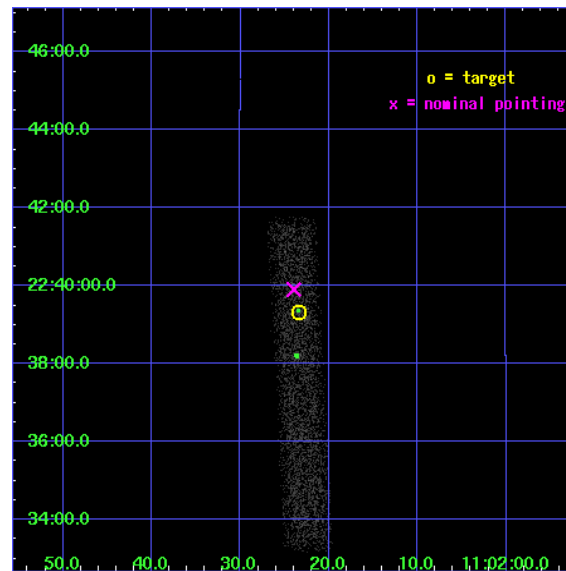
L2 Processing Date : Jul 19 2006

Contents

1	Front	2
2	OBI	3
2.1	OBI	3
2.1.1	Images	3
2.1.2	Bias	3
2.1.3	Parameters	4
2.1.4	Events	4
2.2	Compared Parameters	5
2.3	Aspect	6
2.4	Star Slots	9
2.4.1	Slot 3	9
2.4.2	Slot 4	10
2.4.3	Slot 5	11
2.4.4	Slot 6	12
2.4.5	Slot 7	13
2.5	FID Slots	14
2.5.1	Slot 0	14
2.5.2	Slot 1	15
2.5.3	Slot 2	16
3	Point Sources	17
A	Summary	18
A.1	Status	18
A.2	Comments	18

1 Front

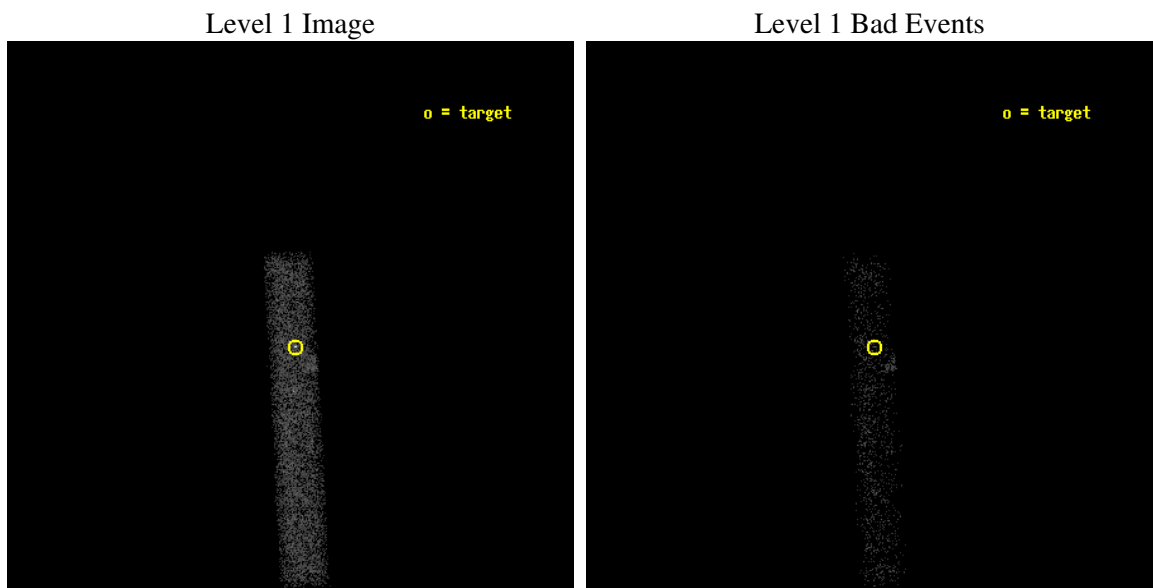
seq_num	700815
obs_id	4136
title	CHANDRA OBSERVATIONS OF THE FIRST SAMPLE OF RADIO-LOUD NARROW LINE SEYFERT I GALAXIES
observer	Dr. Sally Laurent-Muehleisen
object	FIRST J110223+223920
dtcycle	0
cycle	P
ra_targ	165.5975
dec_targ	22.65575
ra_nom	165.59987922752
dec_nom	22.665159327969
roll_nom	86.979643563487
revision	2
ontime	9978.4001486897
livetime	9049.8822317157
ontime7	9978.4001486897
l2events	5843



2 OBI

2.1 OBI

2.1.1 Images



2.1.2 Bias

Chip 7



2.1.3 Parameters

obi_num	0
ascdsver	7.6.8
caldbver	3.2.2
date	2006-07-19T07:44:11
revision	2

sched_exp_time	9847.376000
ontime	10914.313816816
ontime7	10914.313816816
l1events	13408

2.1.4 Events

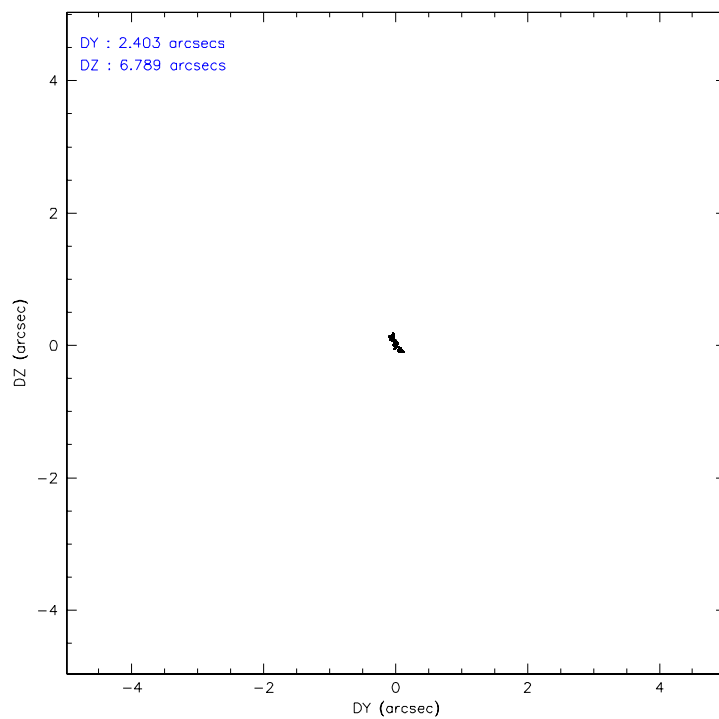
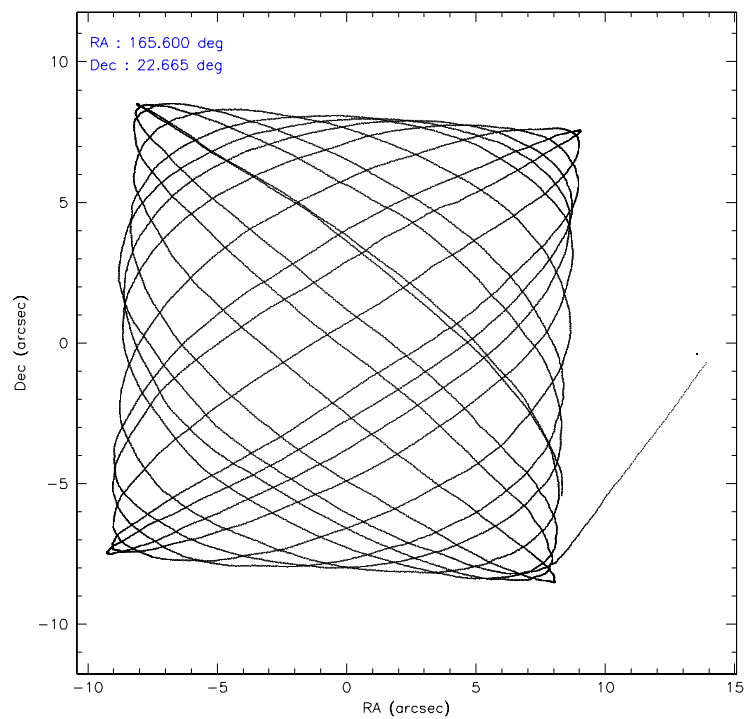
	ccd 7
level 1 events	13408
rejected events	7351
rejected %	54%

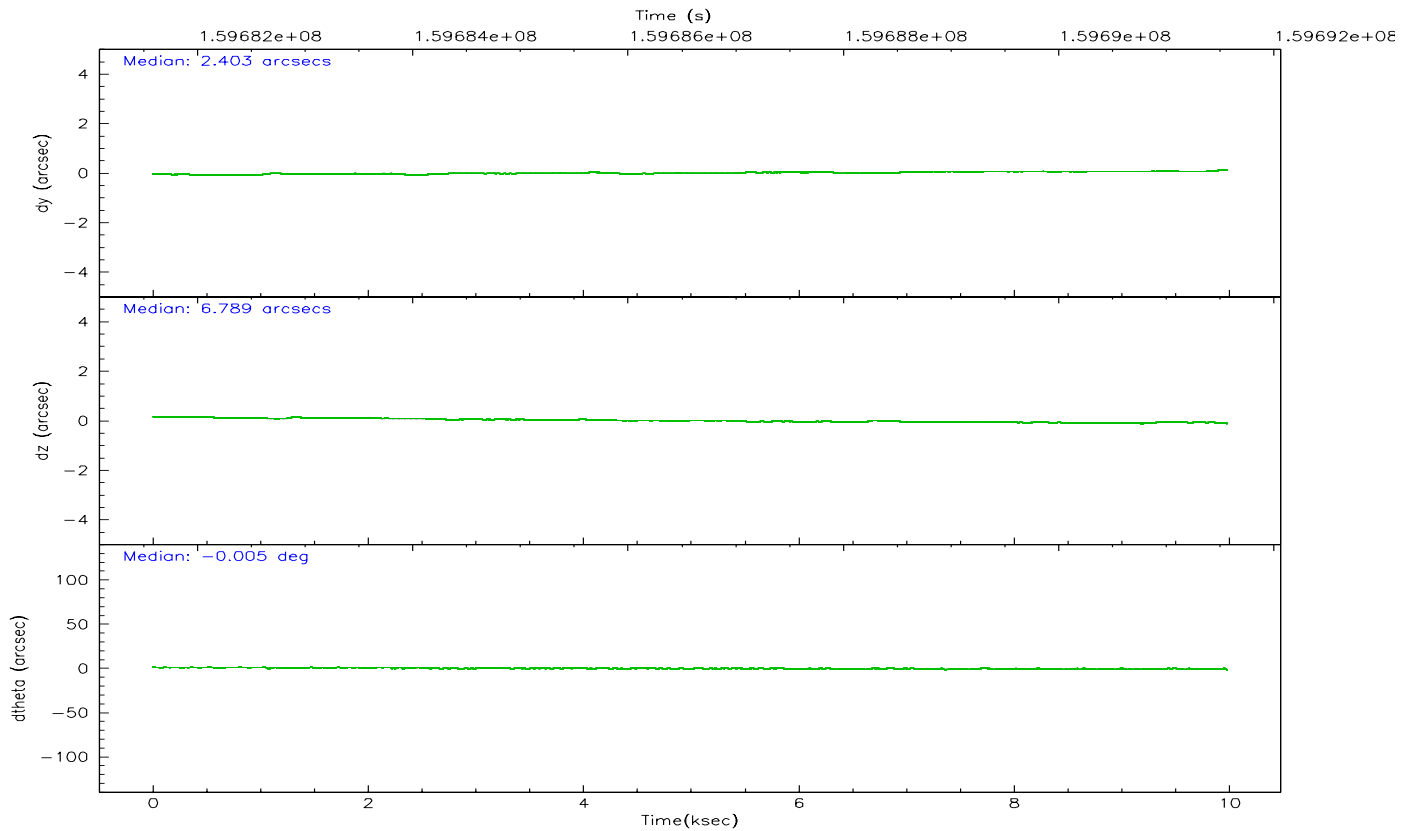
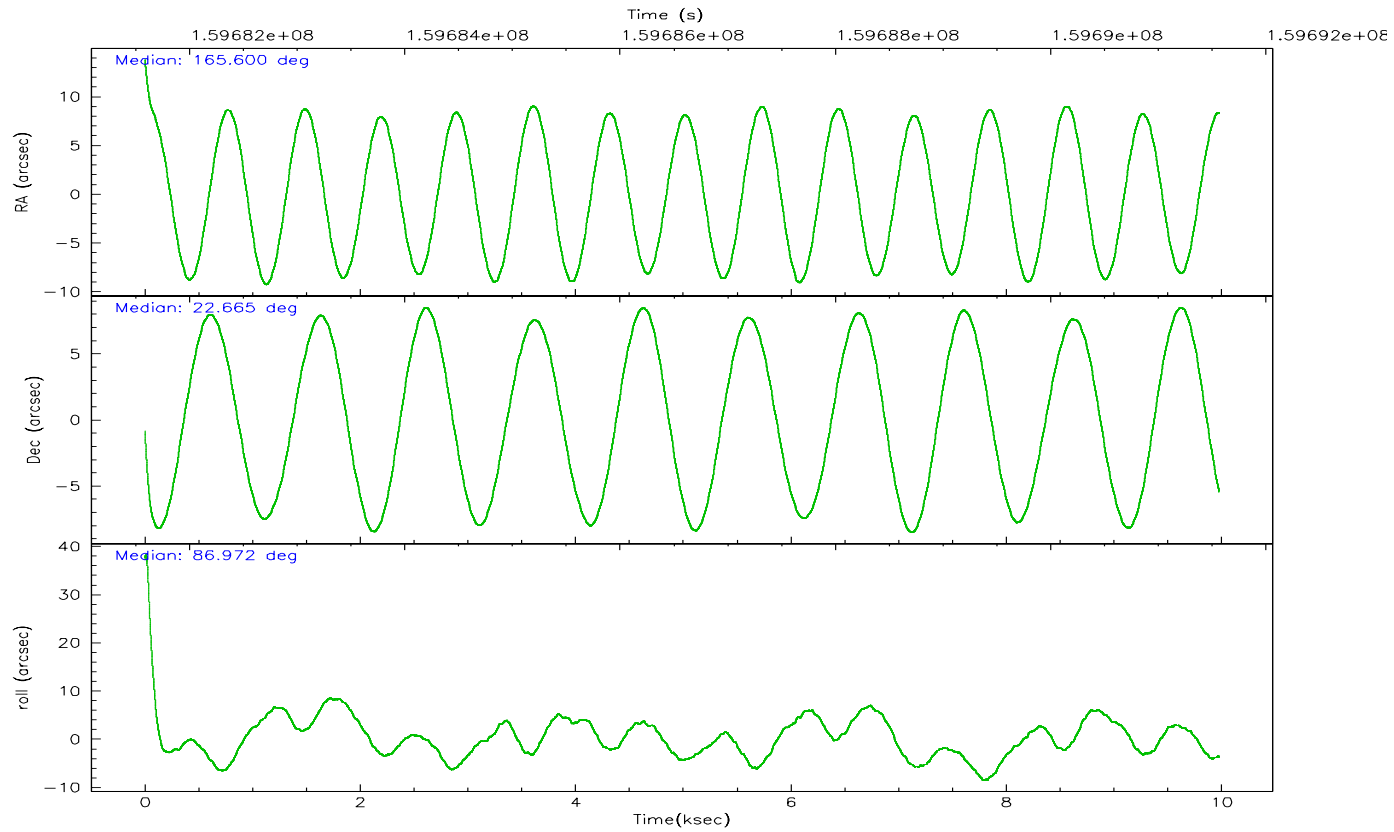
	ccd 7
grade 0 events	731
	5%
grade 1 events	7
	0%
grade 2 events	1484
	11%
grade 3 events	664
	4%
grade 4 events	624
	4%
grade 5 events	816
	6%
grade 6 events	2990
	22%
grade 7 events	6092
	45%

2.2 Compared Parameters

Parameter	Planned	Actual	Parameter	Planned	Actual
Instrument	ACIS	ACIS	Obspar format version number	6	6
Detector	ACIS-7	ACIS-7	Obspar file type	PREDICTED	ACTUAL
Grating	NONE	NONE	Obspar update status	NONE	UPDATED
Data mode	FAINT	FAINT	On-chip summing requested	N	N
Observation mode	POINTING	POINTING	Subarray requested	1/8	1/8
Pointing RA	165.613621	165.5998792275241	Subarray start row	0	449
Pointing Dec	22.641072	22.66515932796917	Subarray row count	1024	128
Pointing Roll	86.817664	86.97964356348709	Alternating exposures requested	N	N
SIM focus pos (mm)	-0.684267	-0.6828225247311905	Primary exposure time	0.000000	0.4
SIM defocus (mm)	0	0.001444936568705701			
SIM translation stage pos (mm)	-190.132523	-190.1425803651734			
SIM translation stage offset (mm)	0	0.01005778216563158			
Observation start time	159681715.184000	159680648.70986			
Observation start date	2003-01-23T04:00:51	2003-01-23T03:44:08			
Observation end time	159691563.184000	159691877.07283			
Observation end date	2003-01-23T06:44:59	2003-01-23T06:51:17			
Read mode	TIMED	TIMED			

2.3 Aspect



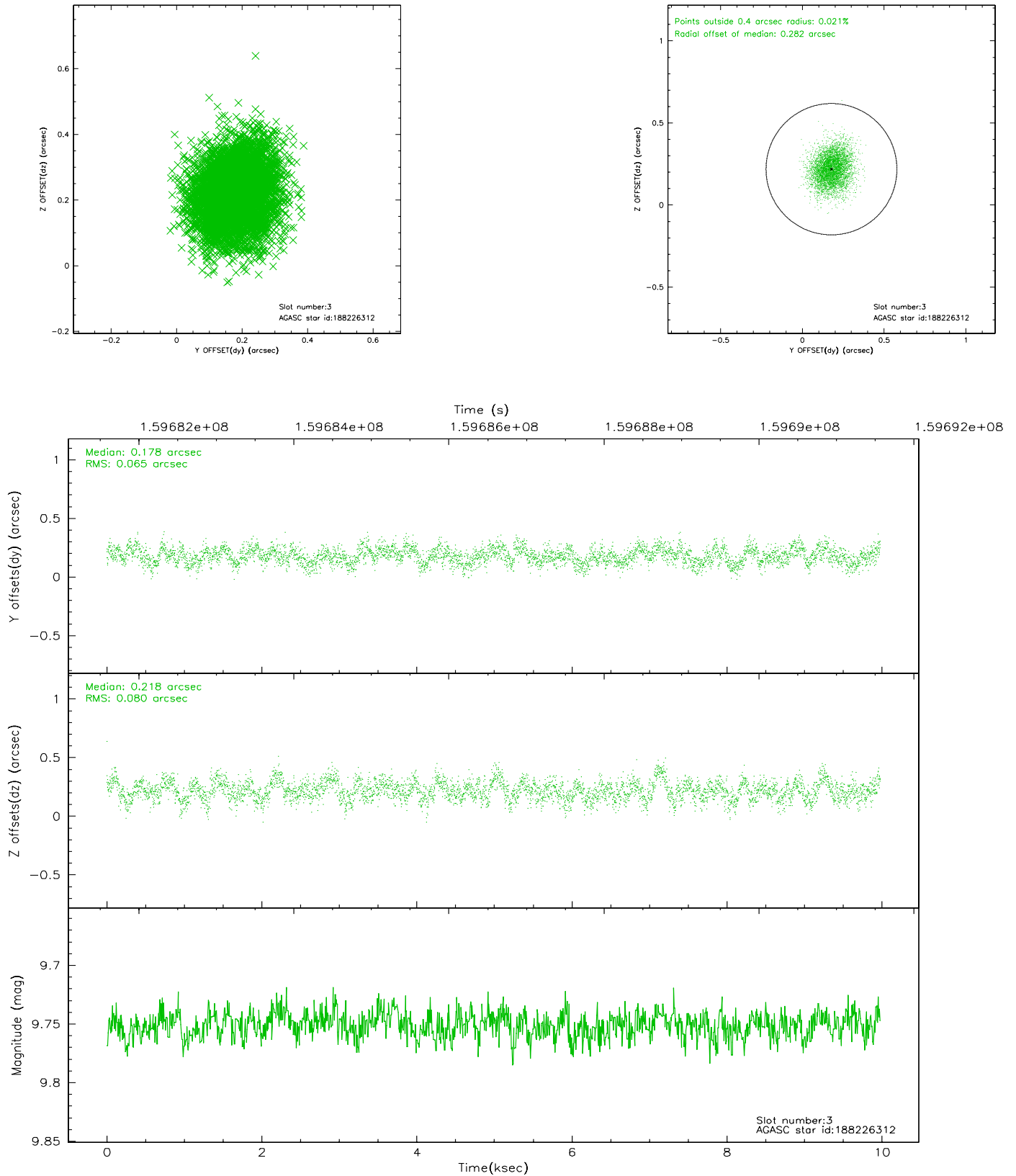


Slot Statistics

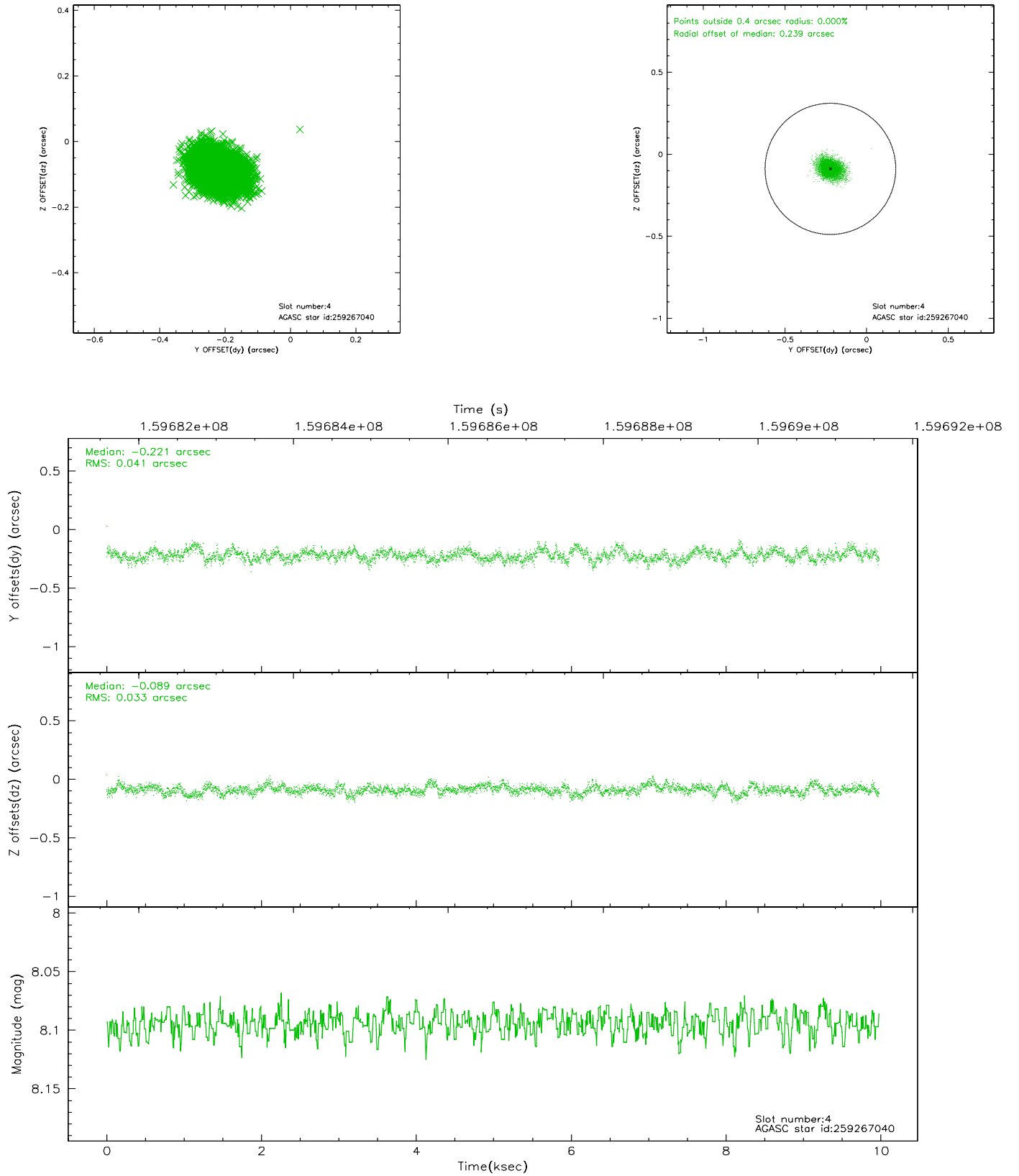
slot	status	id	mag	n_pts	med_dy	med_dz	dr1	dr2	ra	dec	mean_y	mean_z
0	FID	ACIS-S-2	7.12	2433	-0.023	0.022	0.007	0.011	0.000000	0.000000	-755.04	-1727.90
1	FID	ACIS-S-4	7.21	2433	-0.055	0.005	0.005	0.010	0.000000	0.000000	2157.94	180.05
2	FID	ACIS-S-5	7.24	2433	0.047	-0.018	0.006	0.011	0.000000	0.000000	-1807.15	174.26
3	GUIDE	188226312	9.75	4869	0.178	0.218	0.110	0.178	166.145280	22.125762	-1750.23	-1872.90
4	GUIDE	259267040	8.09	4869	-0.221	-0.089	0.055	0.093	165.215267	23.300173	2297.04	1447.10
5	GUIDE	259276016	9.81	4868	-0.094	0.092	0.092	0.152	166.007262	23.045276	1527.68	-1220.16
6	GUIDE	188091064	7.14	4868	0.095	-0.114	0.064	0.106	165.010632	22.026047	-2318.17	1886.28
7	GUIDE	259276648	9.70	4812	0.034	-0.108	0.111	0.197	165.395795	23.006130	1272.19	794.49

2.4 Star Slots

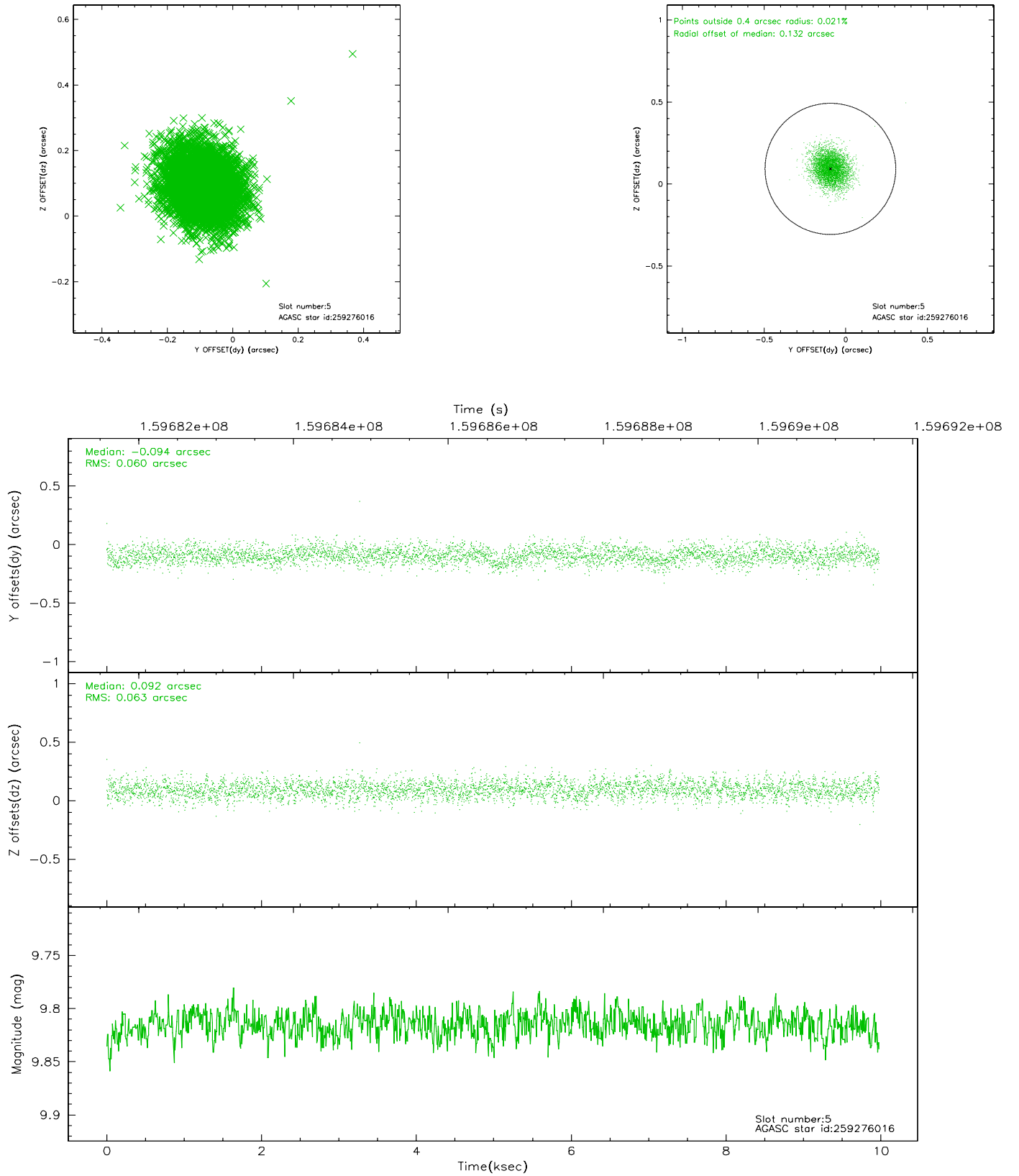
2.4.1 Slot 3



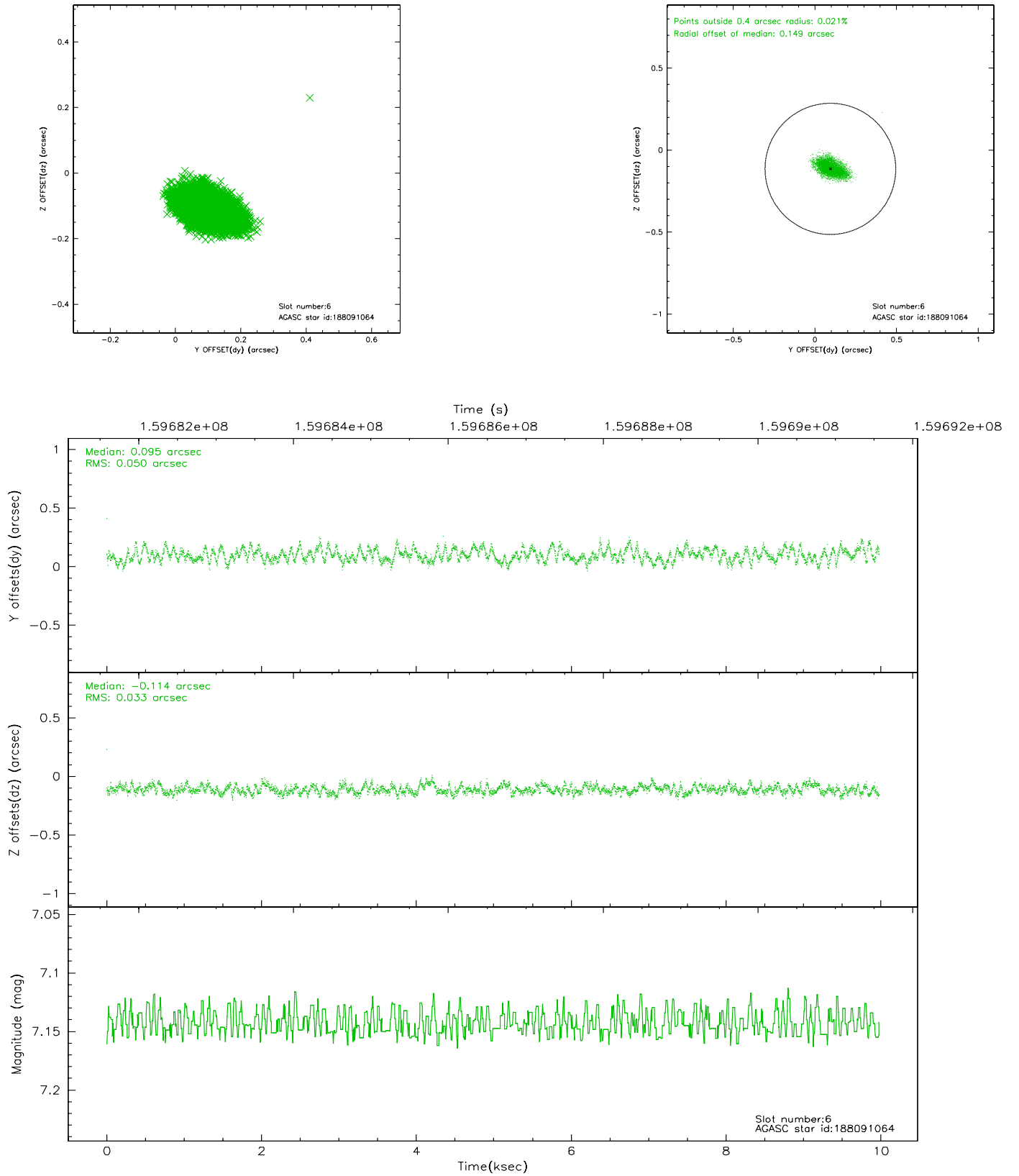
2.4.2 Slot 4



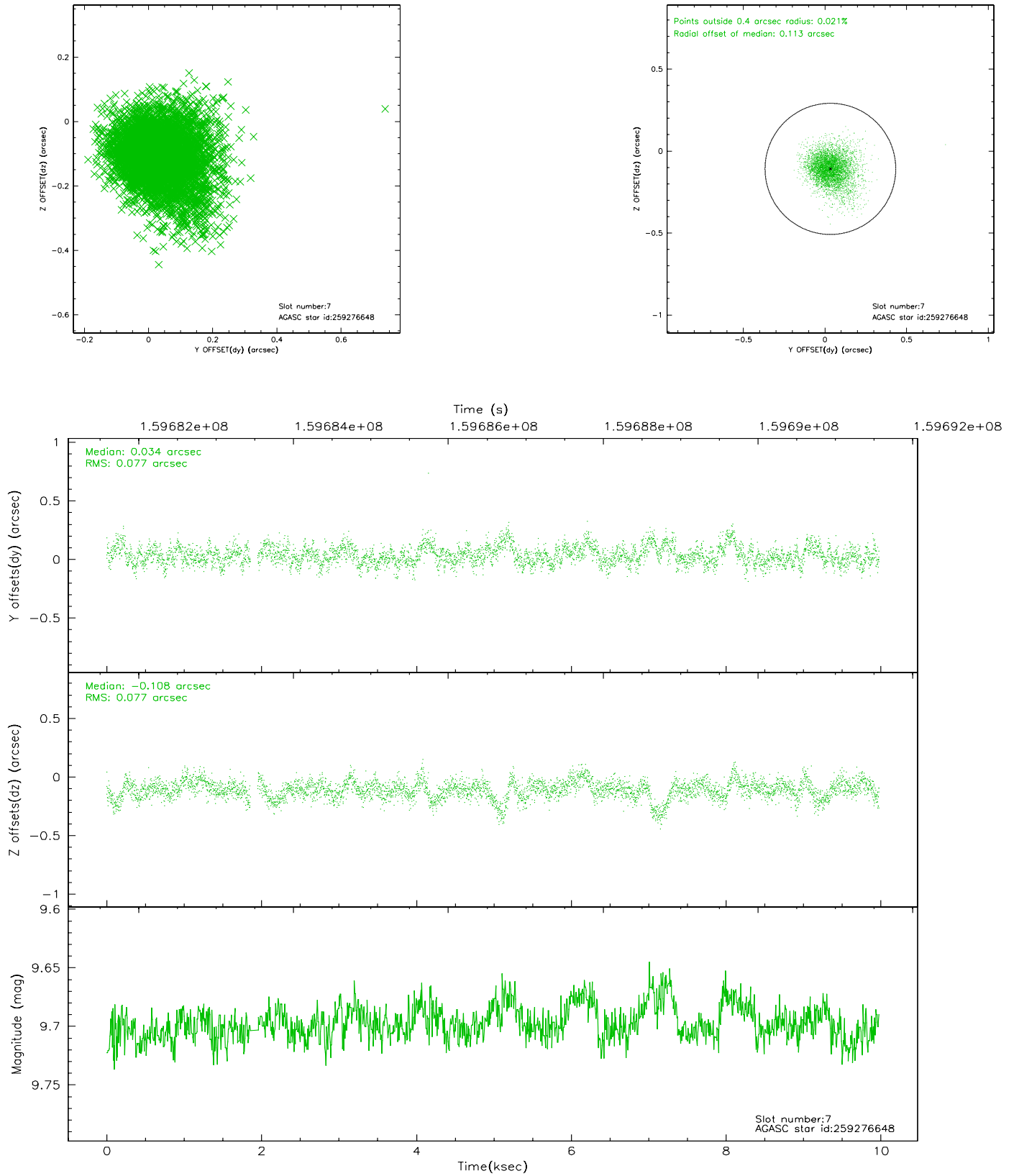
2.4.3 Slot 5



2.4.4 Slot 6

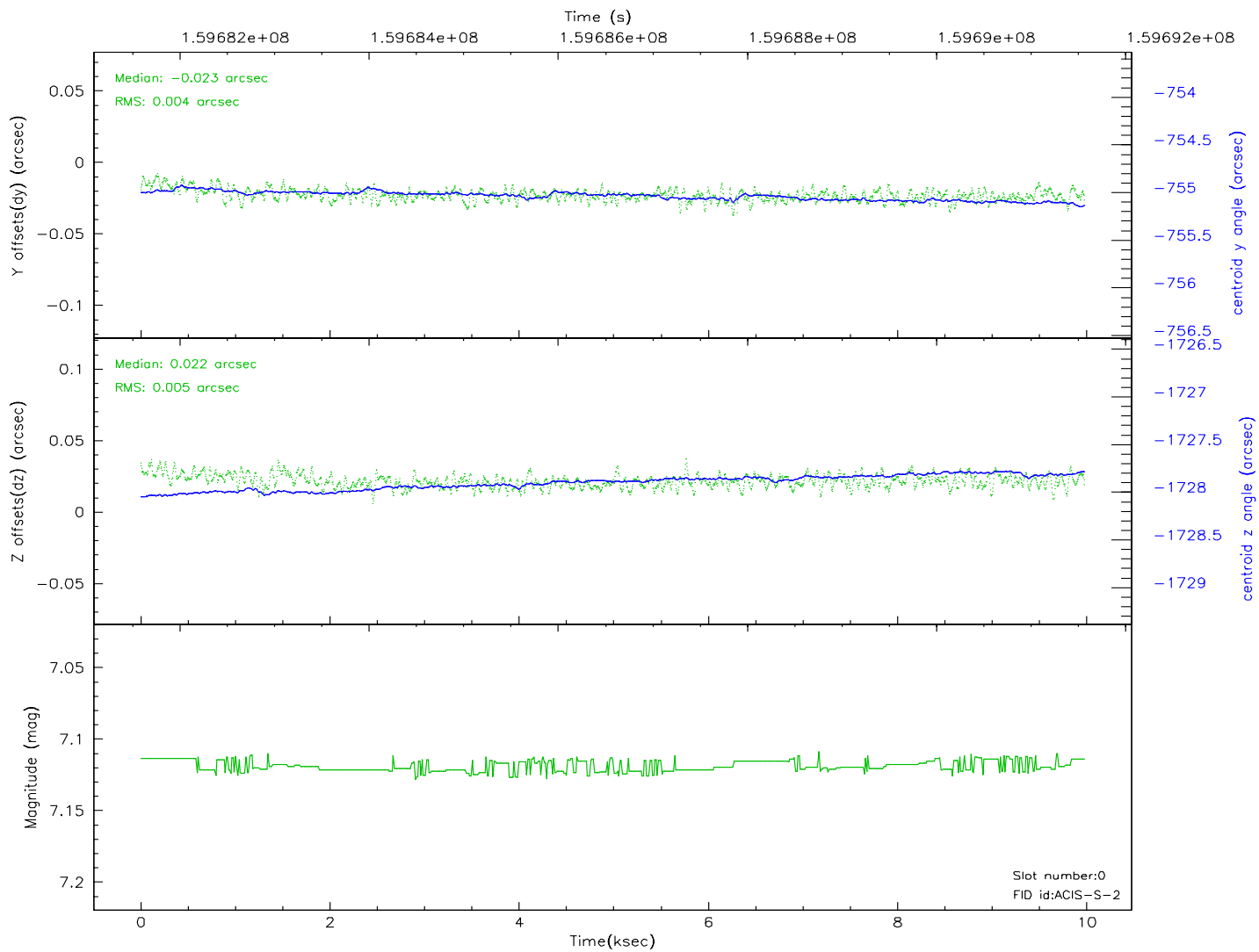
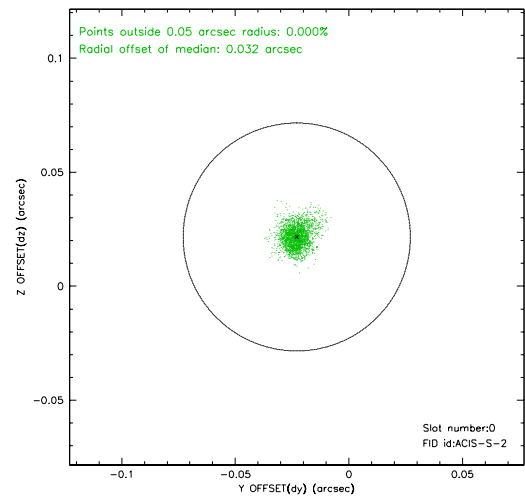
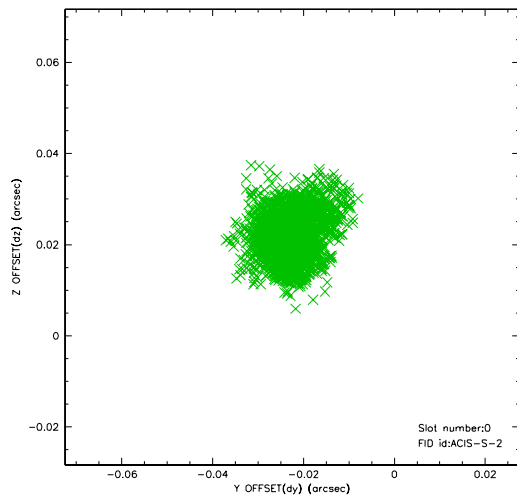


2.4.5 Slot 7

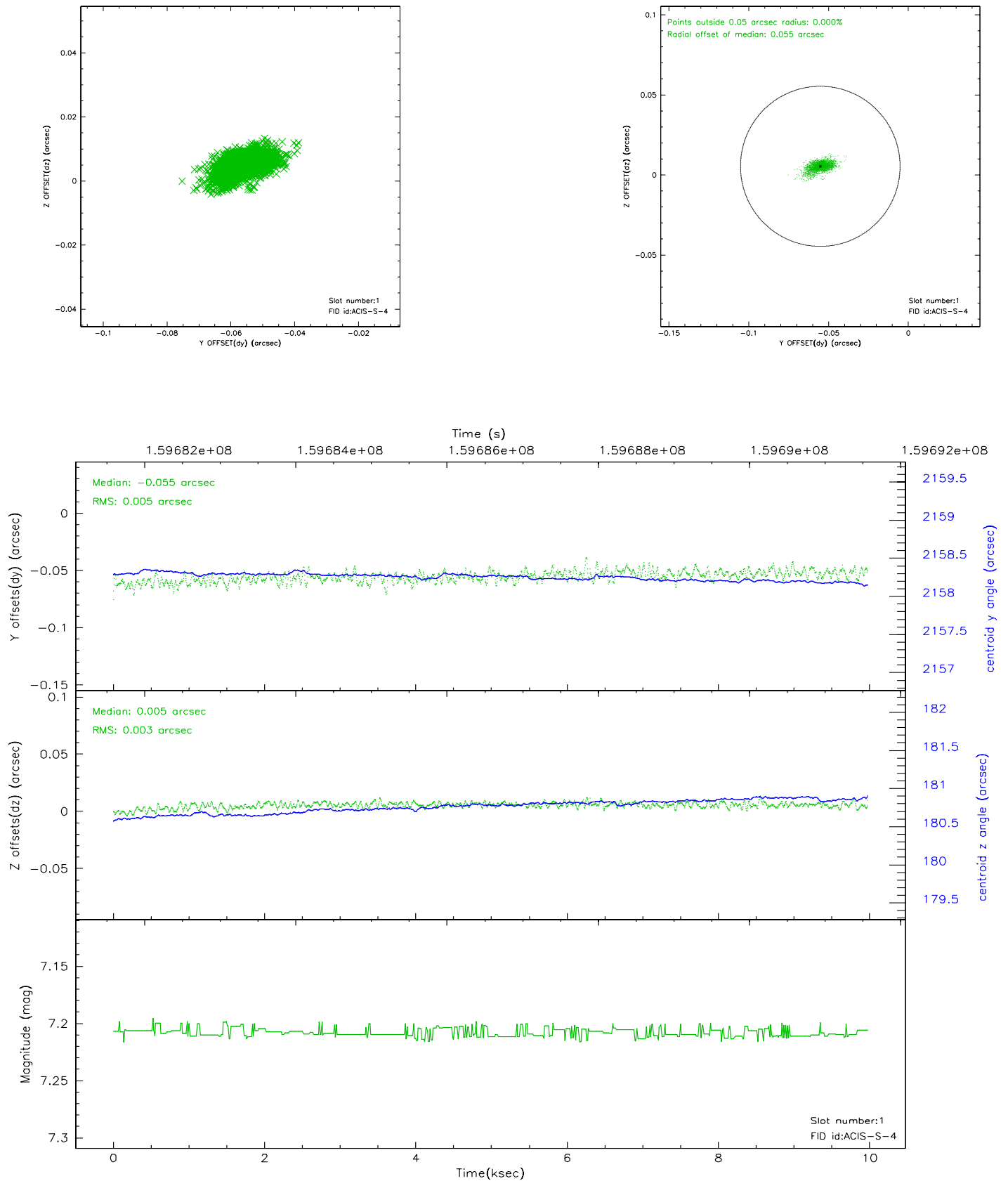


2.5 FID Slots

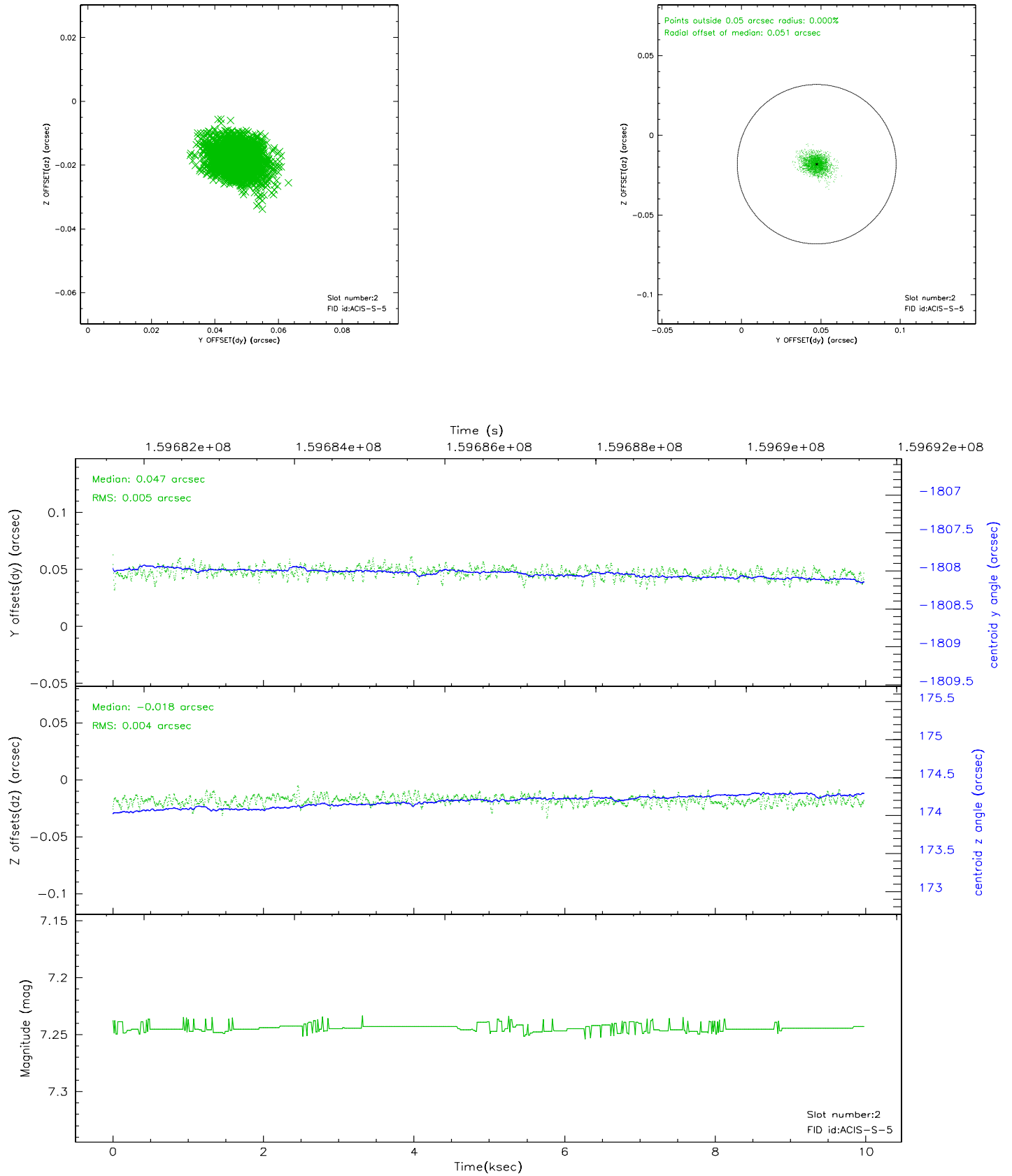
2.5.1 Slot 0



2.5.2 Slot 1



2.5.3 Slot 2



3 Point Sources

A Summary

A.1 Status

V&V Scientist	Jen Lauer
V&V Date (YYYY-MM-DD)	2006.07.19
V&V Edition	1
V&V Disposition and Status	OK
V&V Charge Time	9.978

A.2 Comments