

V&V Reference Report

L2 ASCDS Version : 7.6.8

Observation 4123 - L2 Version 001
Chandra X-Ray Center

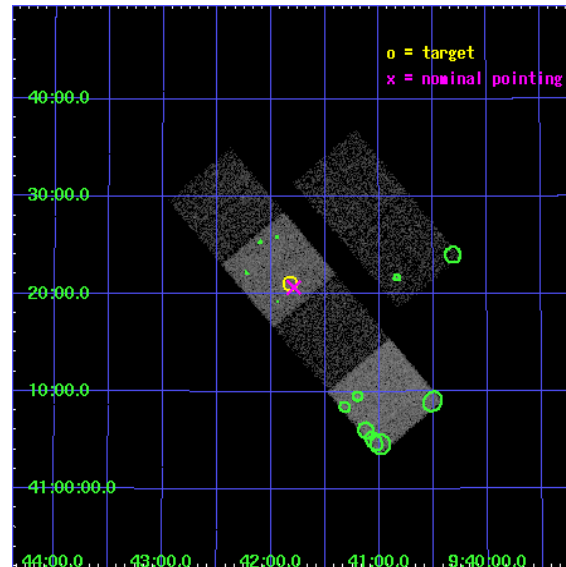
L2 Processing Date : Jul 25 2006

Contents

1	Front	2
2	OBI	3
2.1	OBI	3
2.1.1	Images	3
2.1.2	Bias	3
2.1.3	Parameters	4
2.1.4	Events	4
2.2	Compared Parameters	5
2.3	Aspect	6
2.4	Star Slots	9
2.4.1	Slot 3	9
2.4.2	Slot 4	10
2.4.3	Slot 5	11
2.4.4	Slot 6	12
2.4.5	Slot 7	13
2.5	FID Slots	14
2.5.1	Slot 0	14
2.5.2	Slot 1	15
2.5.3	Slot 2	16
3	Point Sources	17
A	Summary	18
A.1	Status	18
A.2	Comments	18

1 Front

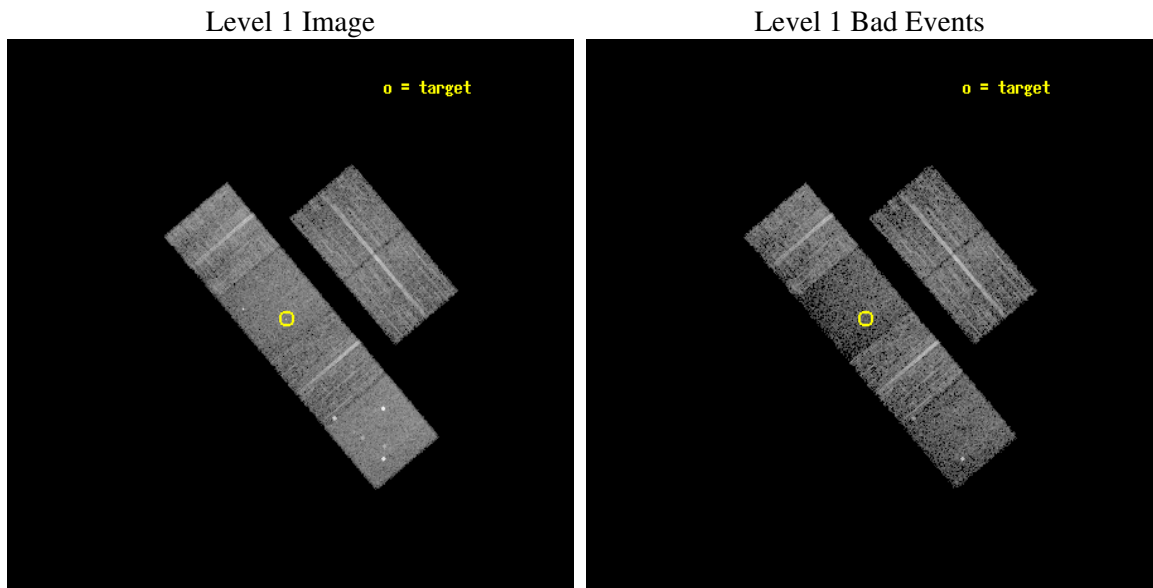
seq_num	700802
obs_id	4123
title	WHAT KIND OF JETS DOES NATURE MAKE? X-RAY CHARACTERIZATION OF THE FIRST FLAT SPECTRUM SAMPLE
observer	Dr. Giovanni Fossati
object	FIRST J0941+4121
dtcycle	0
cycle	P
ra_targ	145.457083
dec_targ	41.351278
ra_nom	145.44722170669
dec_nom	41.345031692156
roll_nom	229.72942382508
revision	3
ontime	7753.5999711156
livetime	7655.4192196239
ontime2	7753.5999711156
ontime3	7753.5999711156
ontime5	7753.5999711156
ontime6	7750.3589809239
ontime7	7753.5999711156
ontime8	7747.118140161
l2events	52072



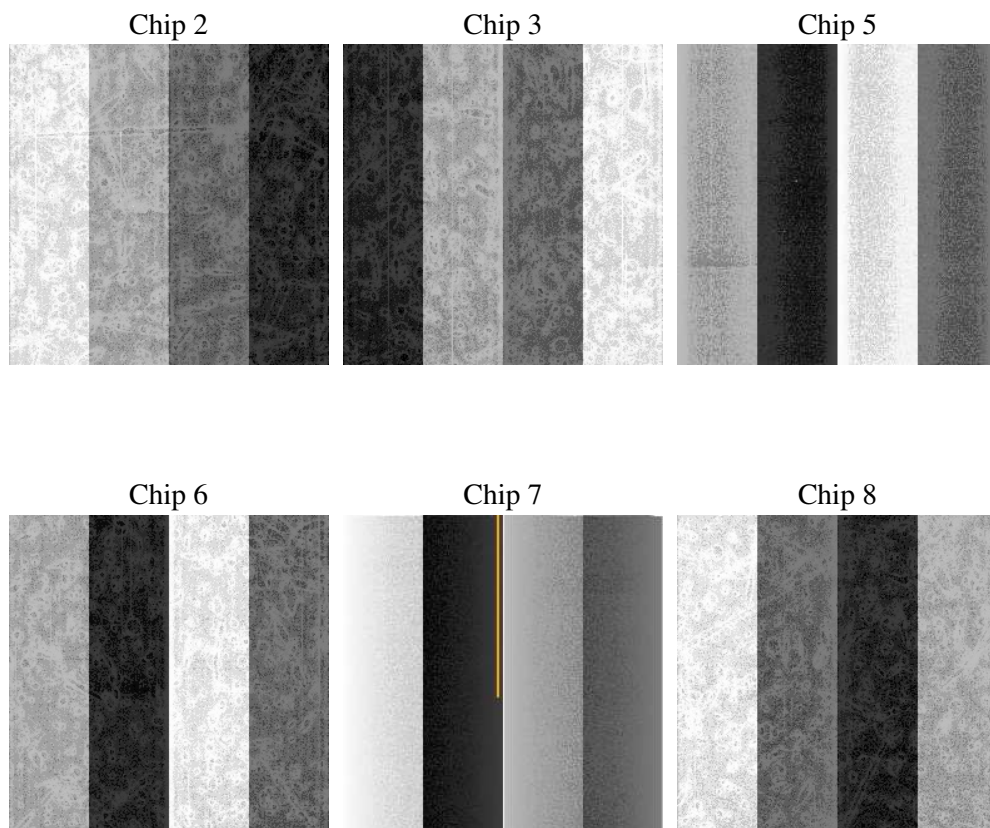
2 OBI

2.1 OBI

2.1.1 Images



2.1.2 Bias



2.1.3 Parameters

obi_num	0
ascdsver	7.6.8
caldsver	3.2.2
date	2006-07-25T23:38:59
revision	3

sched_exp_time	8000.000000
ontime	7758.9658171833
ontime2	7758.9657872915
ontime3	7758.9658171833
ontime5	7758.9658171833
ontime6	7755.7248269916
ontime7	7758.9658171833
ontime8	7752.4839862287
l1events	258460

2.1.4 Events

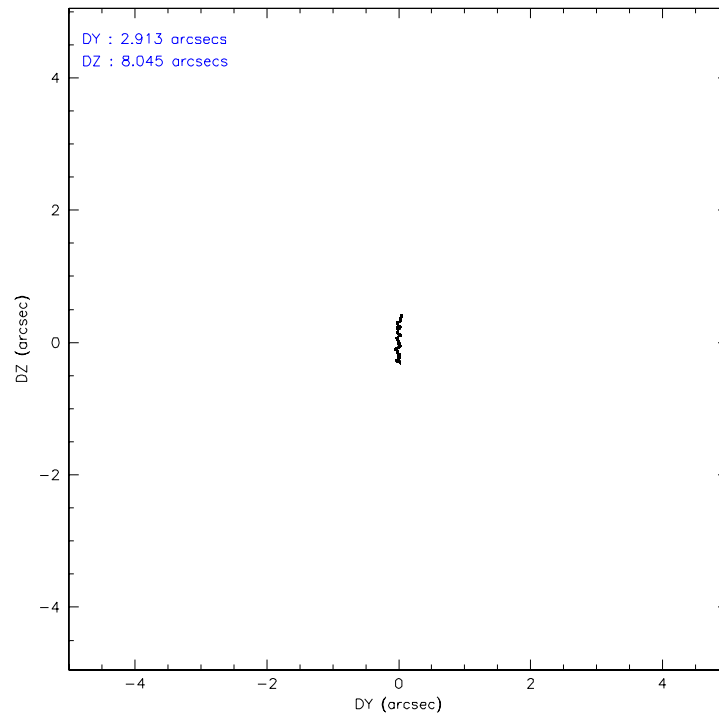
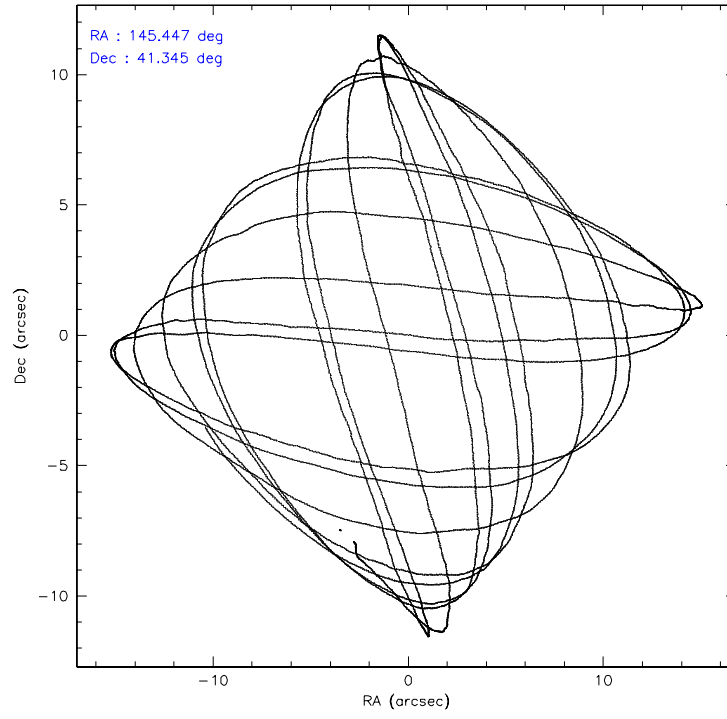
	ccd 2	ccd 3	ccd 5	ccd 6	ccd 7	ccd 8
level 1 events	41209	38787	49652	40278	37474	51060
rejected events	37424	35249	23685	36309	20178	40436
rejected %	90%	90%	47%	90%	53%	79%

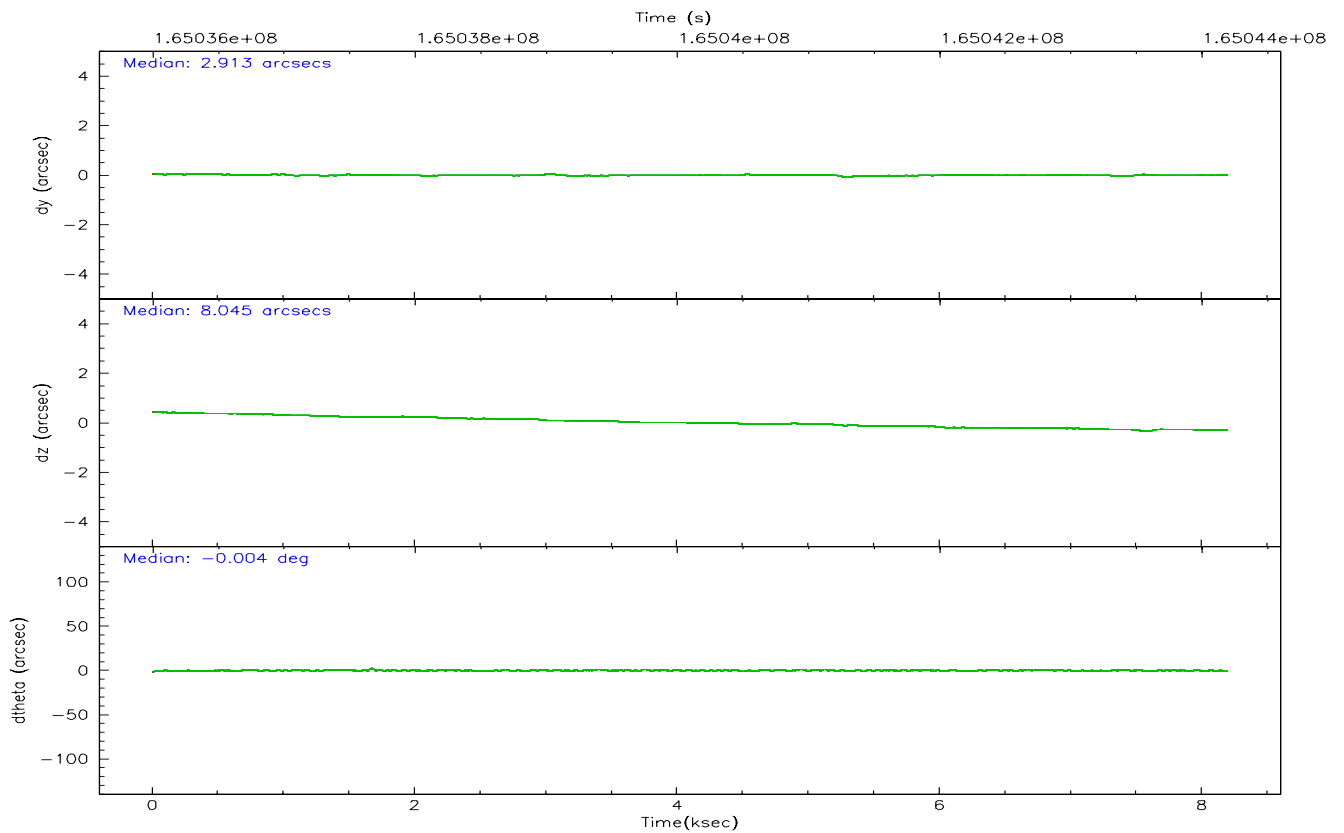
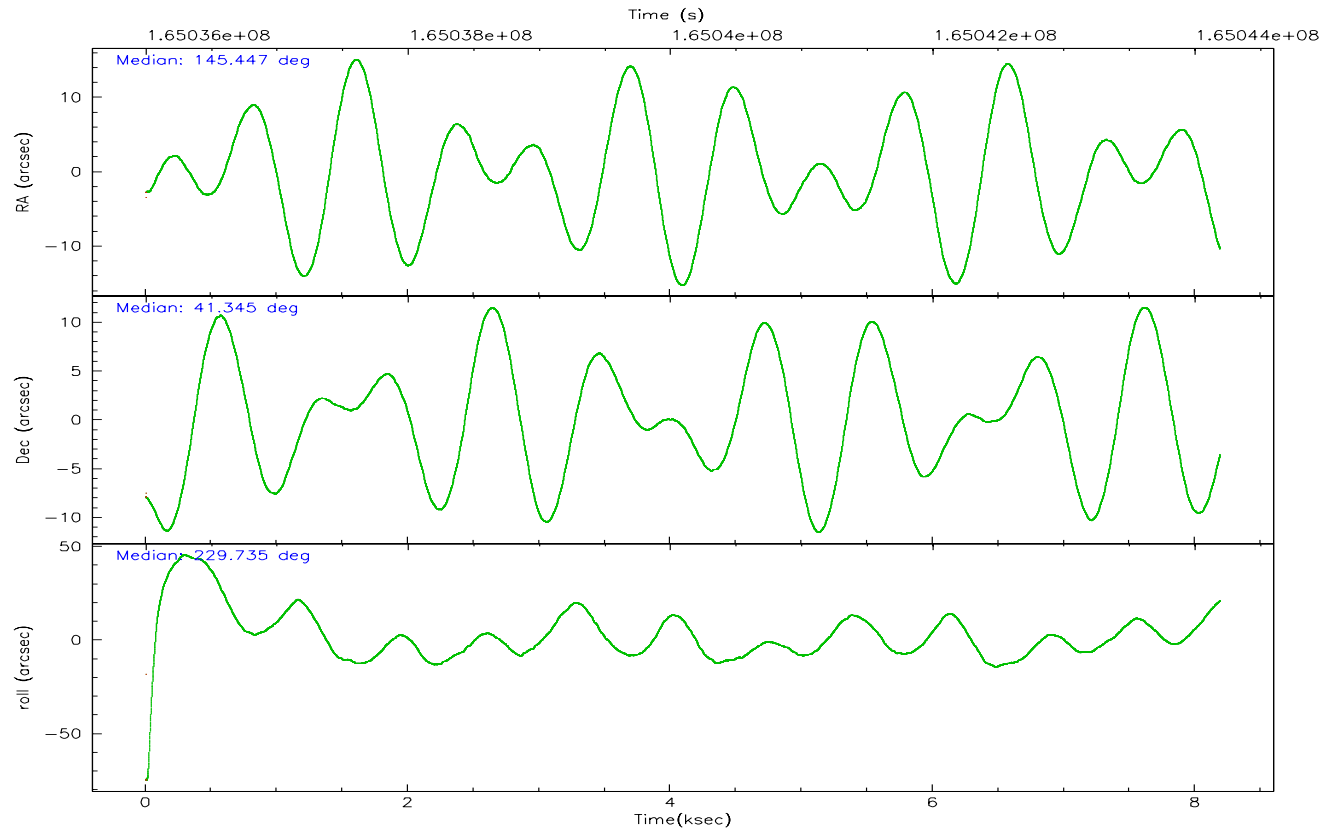
	ccd 2	ccd 3	ccd 5	ccd 6	ccd 7	ccd 8
grade 0 events	1440	1295	3286	1453	1399	2951
	3%	3%	6%	3%	3%	5%
grade 1 events	26	18	74	18	27	40
	0%	0%	0%	0%	0%	0%
grade 2 events	858	727	8289	870	4371	2370
	2%	1%	16%	2%	11%	4%
grade 3 events	409	437	717	459	1093	1155
	0%	1%	1%	1%	2%	2%
grade 4 events	429	394	625	453	1106	1169
	1%	1%	1%	1%	2%	2%
grade 5 events	1075	1215	2767	1256	2954	1897
	2%	3%	5%	3%	7%	3%
grade 6 events	651	687	13065	738	9344	2982
	1%	1%	26%	1%	24%	5%
grade 7 events	36321	34014	20829	35031	17180	38496
	88%	87%	41%	86%	45%	75%

2.2 Compared Parameters

Parameter	Planned	Actual	Parameter	Planned	Actual
Instrument	ACIS	ACIS	Obspar format version number	6	6
Detector	ACIS-235678	ACIS-235678	Obspar file type	PREDICTED	ACTUAL
Grating	NONE	NONE	Obspar update status	NONE	UPDATED
Data mode	VFAINT	VFAINT	On-chip summing requested	N	N
Observation mode	POINTING	POINTING	Subarray requested	NONE	NONE
Pointing RA	145.453151	145.44722170669	Alternating exposures requested	N	N
Pointing Dec	41.371963	41.34503169215596	Primary exposure time	0.000000	3.2
Pointing Roll	229.569075	229.7294238250798			
SIM focus pos (mm)	-0.684267	-0.6828225247311905			
SIM defocus (mm)	0	0.001444936568705701			
SIM translation stage pos (mm)	-190.132523	-190.1425803651734			
SIM translation stage offset (mm)	0	0.01005778216563158			
Observation start time	165036197.184000	165035585.64748			
Observation start date	2003-03-26T03:22:13	2003-03-26T03:13:05			
Observation end time	165044197.184000	165044986.94787			
Observation end date	2003-03-26T05:35:33	2003-03-26T05:49:46			
Read mode	TIMED	TIMED			

2.3 Aspect



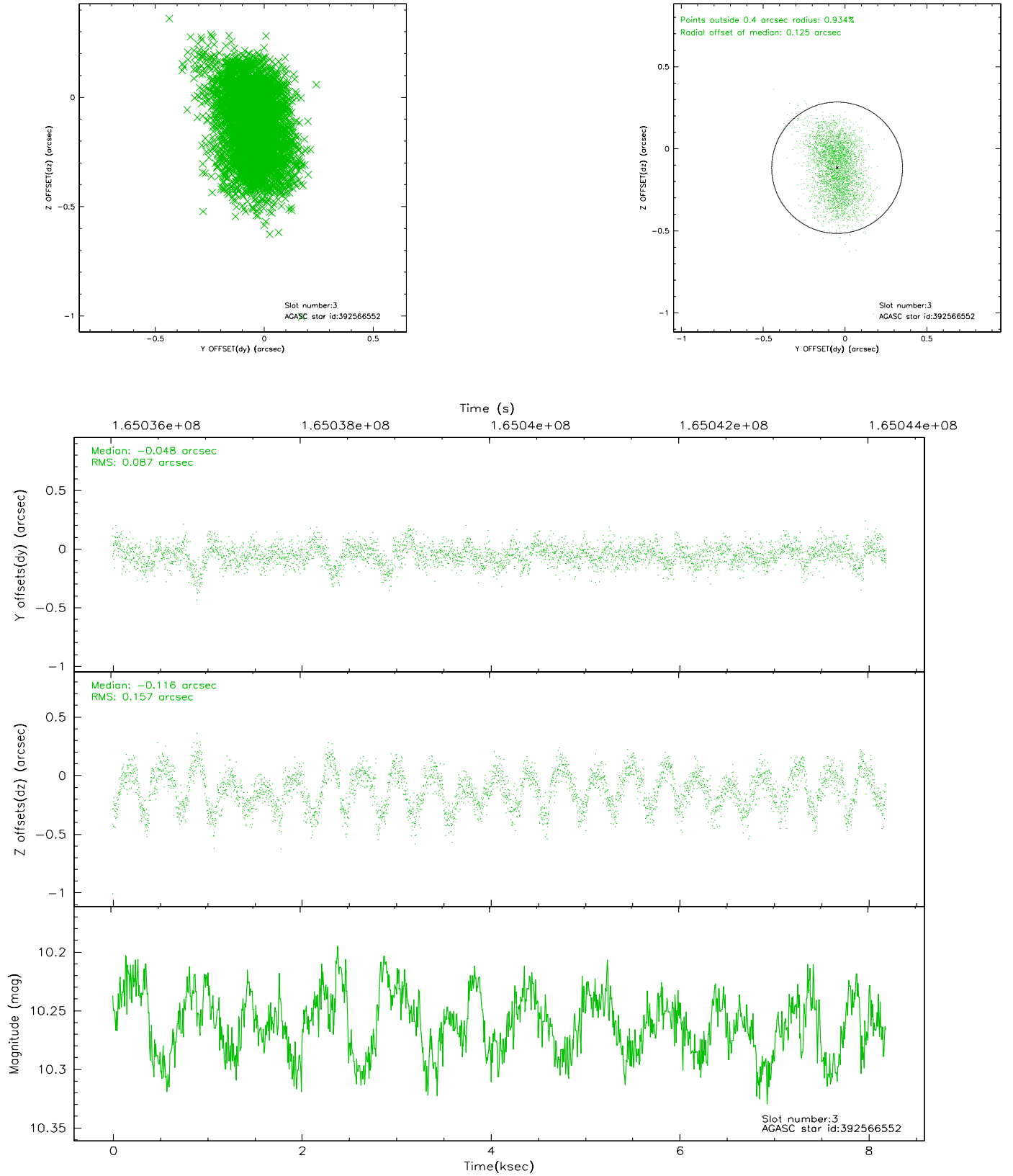


Slot Statistics

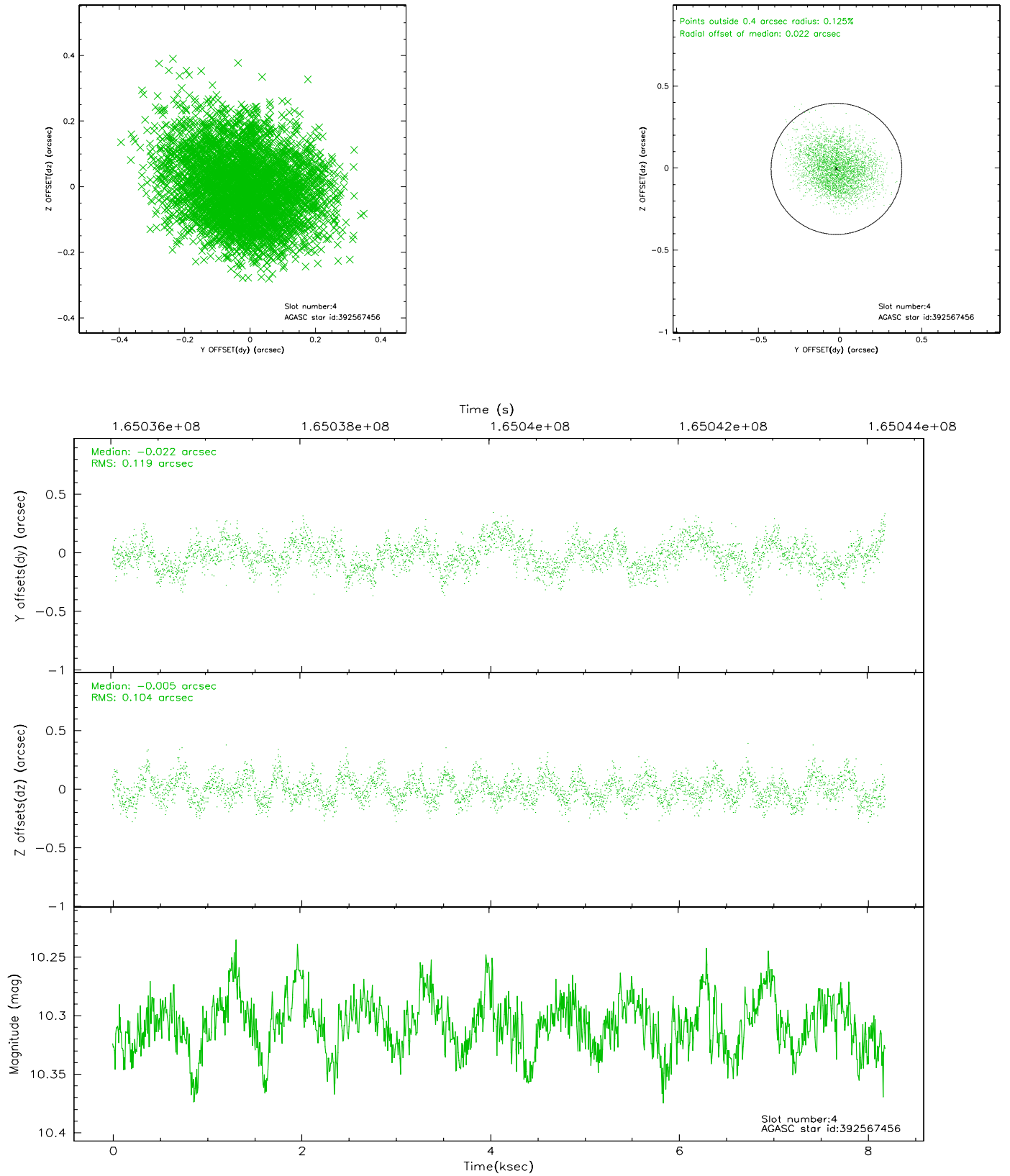
slot	status	id	mag	n_pts	med_dy	med_dz	dr1	dr2	ra	dec	mean_y	mean_z
0	FID	ACIS-S-2	7.11	1998	-0.003	0.009	0.006	0.011	0.000000	0.000000	-755.56	-1729.20
1	FID	ACIS-S-4	7.20	1998	-0.043	-0.001	0.005	0.009	0.000000	0.000000	2157.37	178.56
2	FID	ACIS-S-5	7.24	1997	0.015	0.001	0.006	0.011	0.000000	0.000000	-1807.50	173.02
3	GUIDE	392566552	10.26	3960	-0.048	-0.116	0.192	0.311	145.392126	41.588069	-485.74	-629.85
4	GUIDE	392567456	10.31	3988	-0.022	-0.005	0.170	0.266	145.130250	40.848254	2004.20	551.90
5	GUIDE	392568792	8.97	3995	-0.083	0.015	0.078	0.130	146.111301	41.745566	-2174.86	469.32
6	GUIDE	392570952	9.36	3988	0.111	0.022	0.092	0.147	145.529603	40.934531	1063.67	1179.40
7	GUIDE	392571552	10.17	3976	0.045	0.088	0.165	0.273	145.548887	40.720773	1615.52	1719.21

2.4 Star Slots

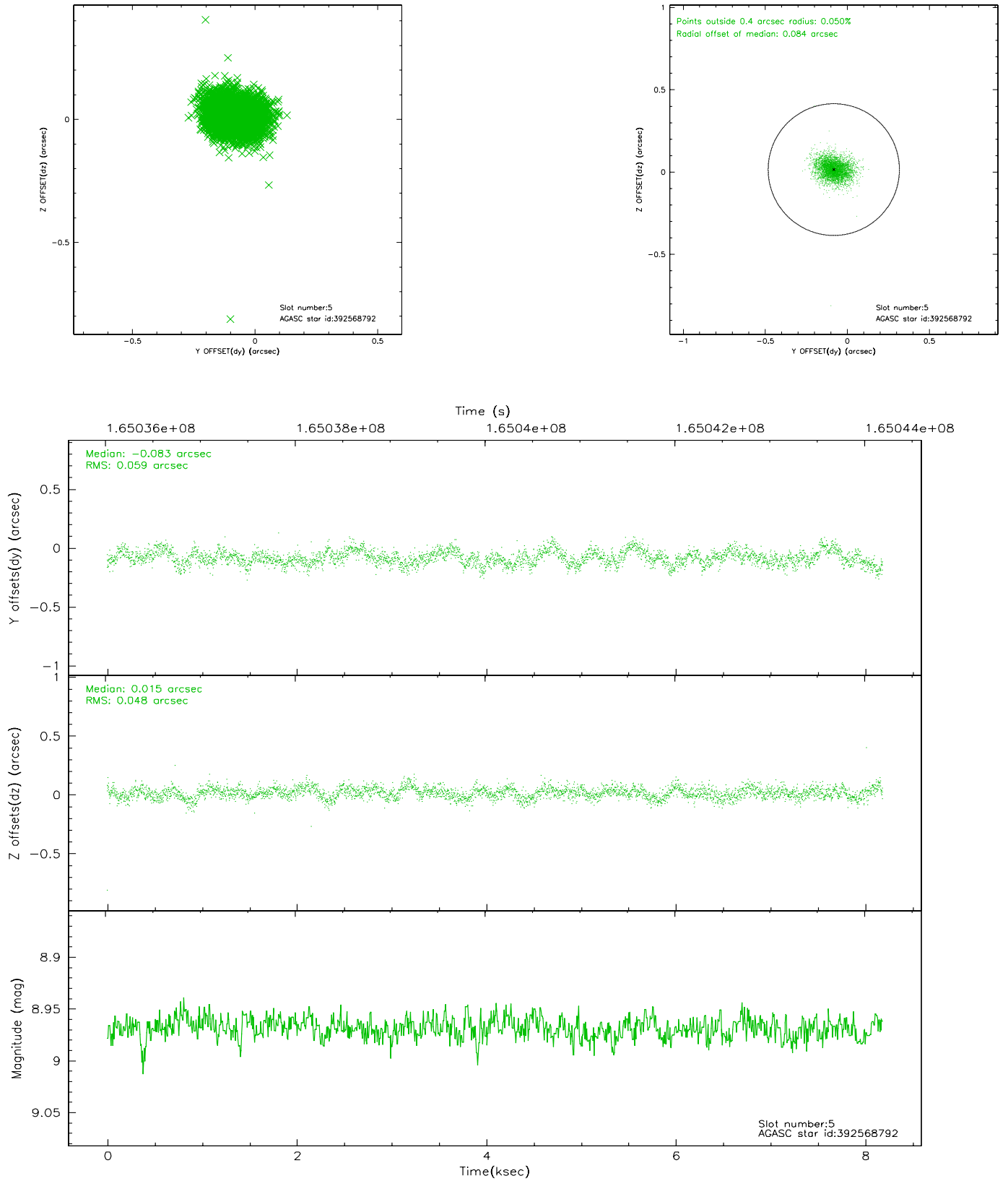
2.4.1 Slot 3



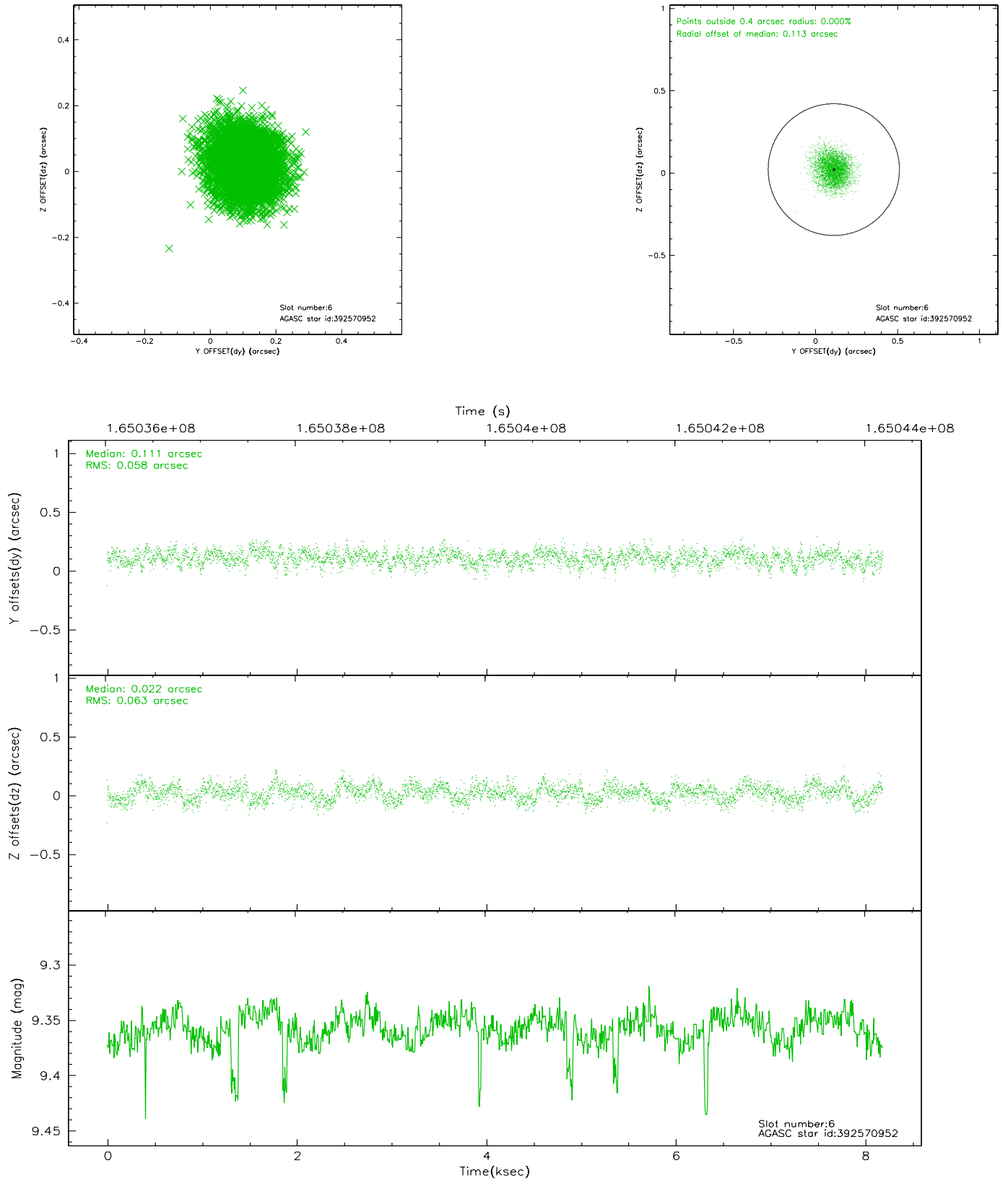
2.4.2 Slot 4



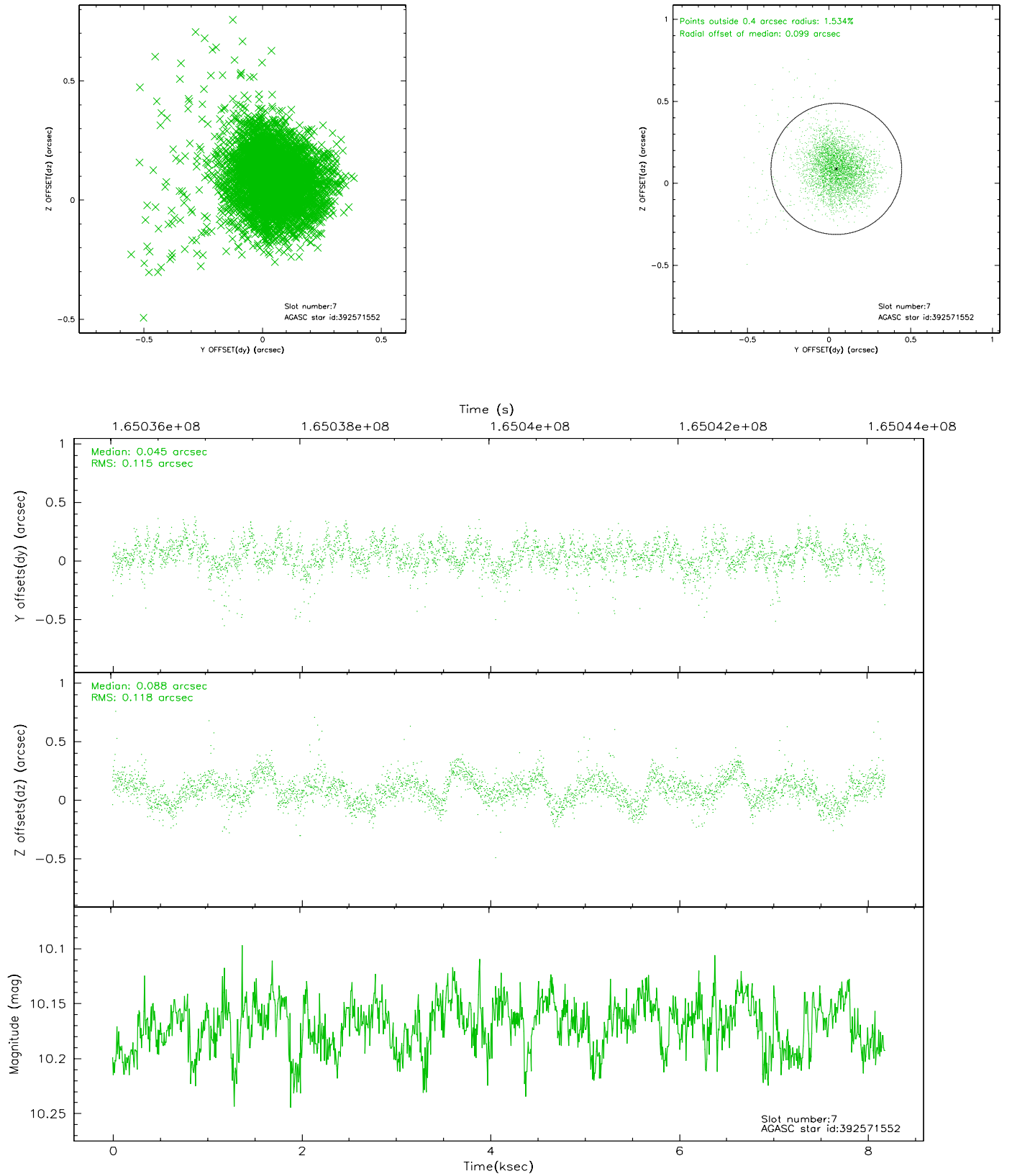
2.4.3 Slot 5



2.4.4 Slot 6

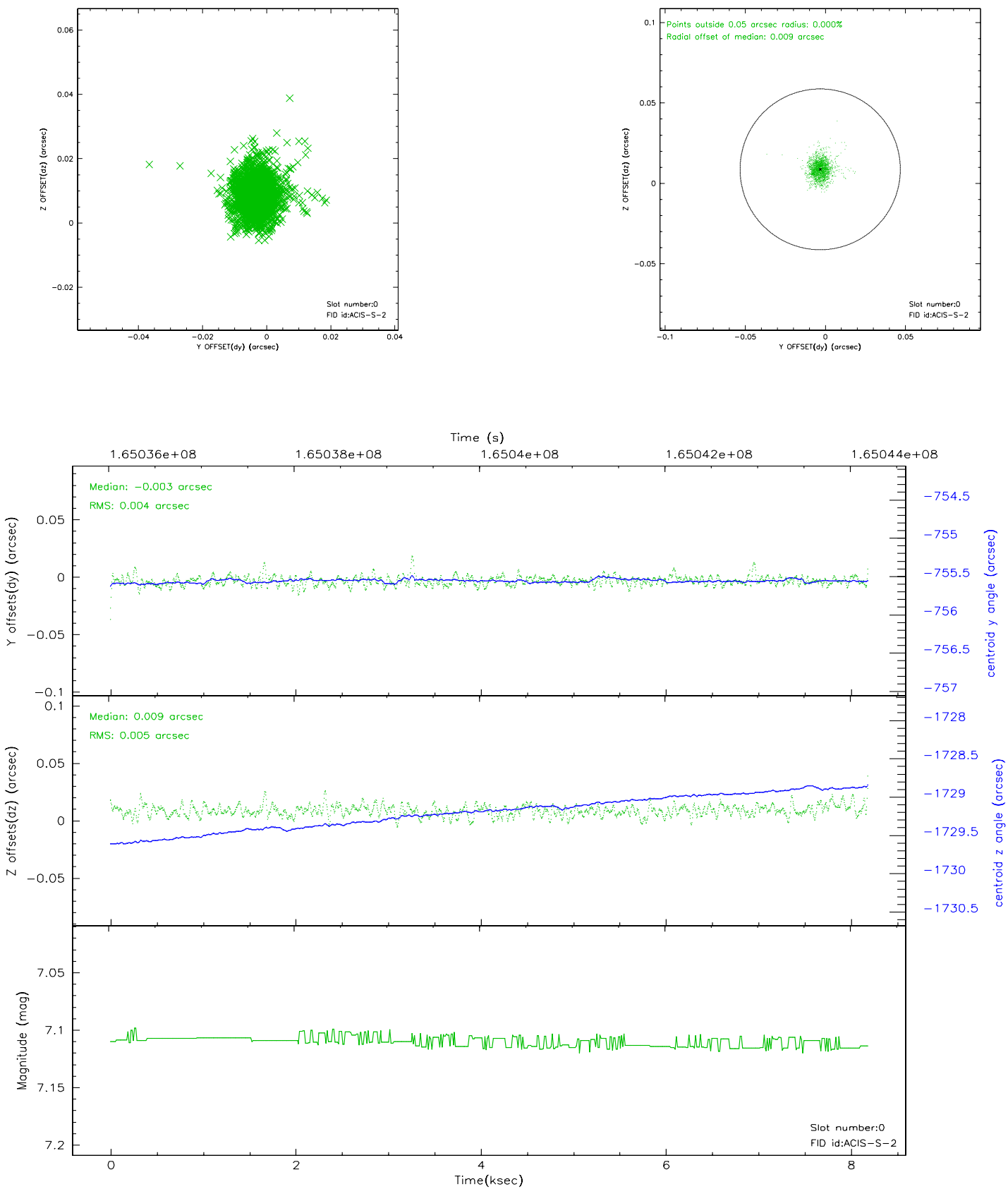


2.4.5 Slot 7

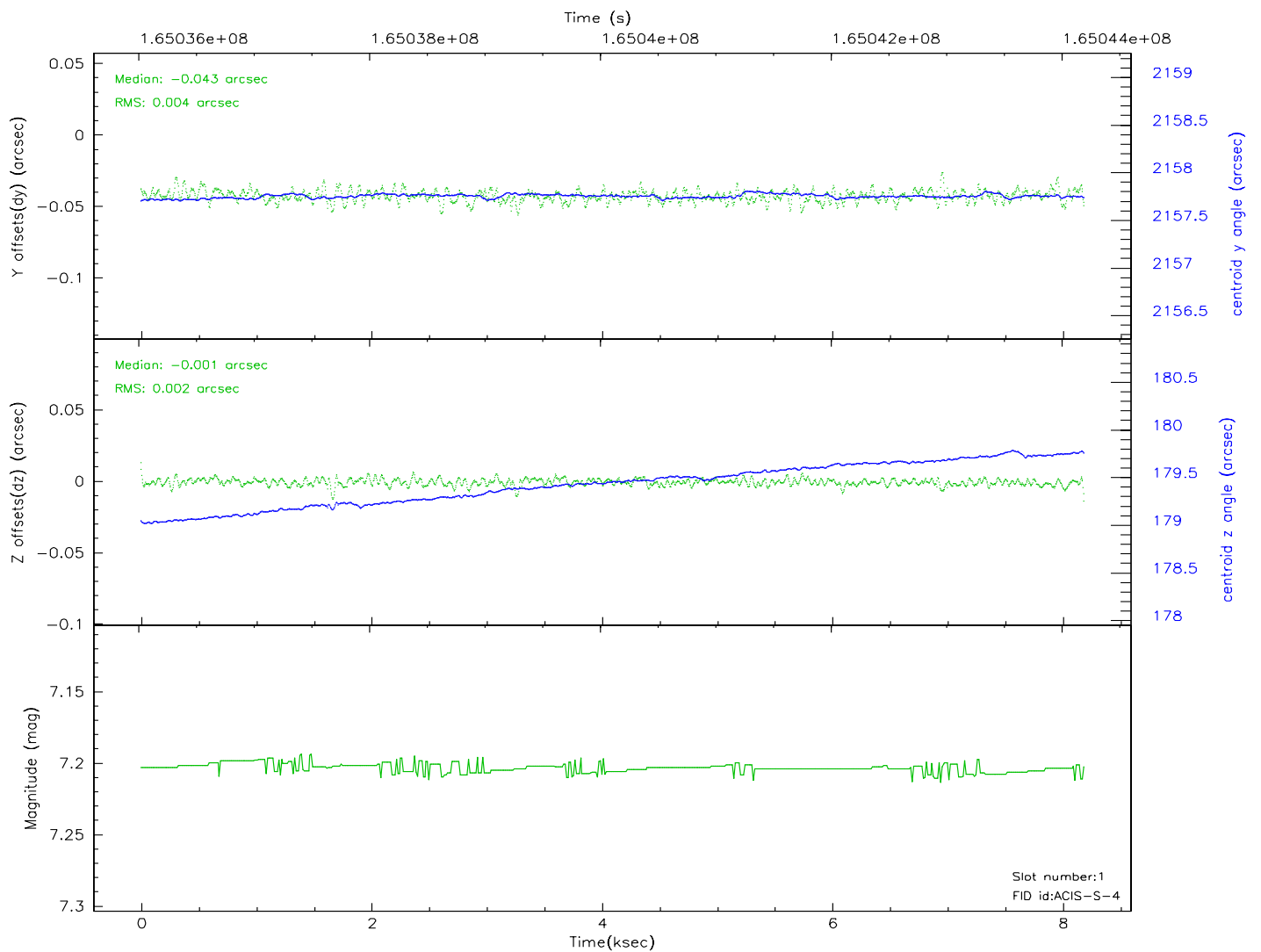
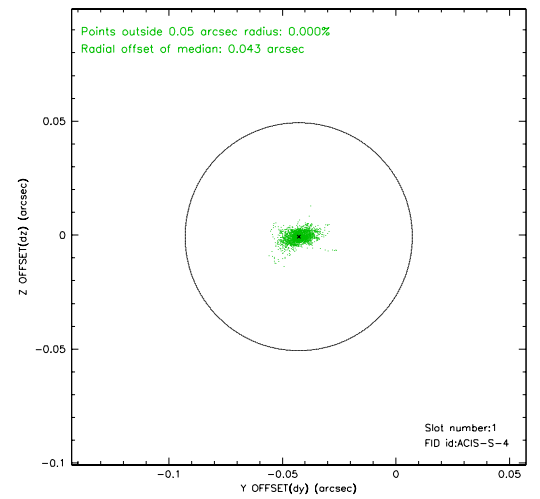
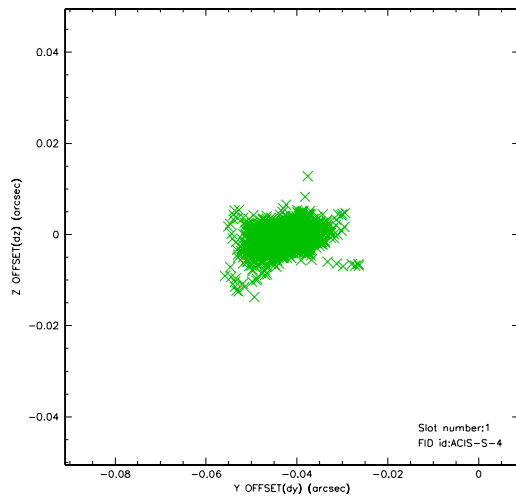


2.5 FID Slots

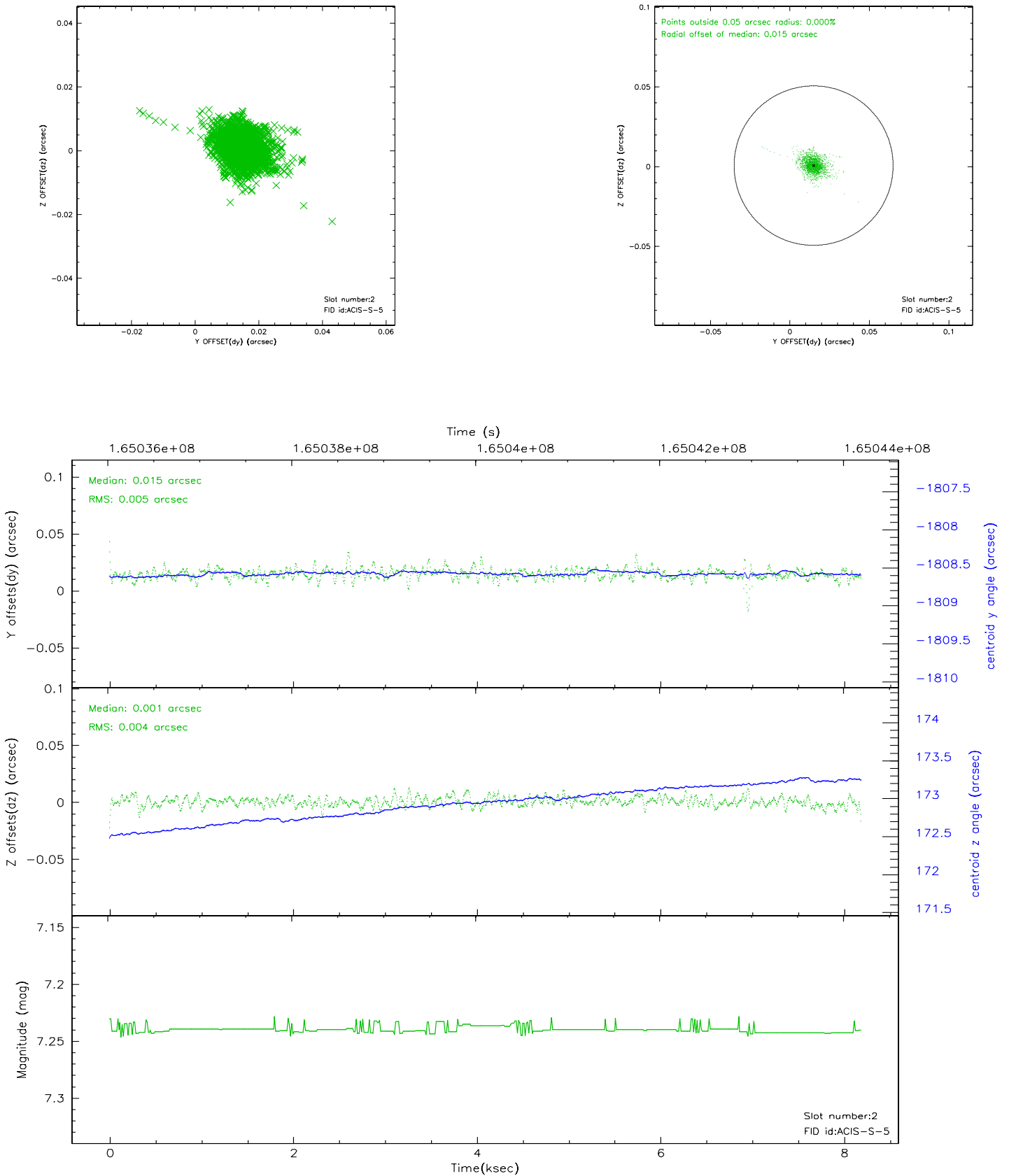
2.5.1 Slot 0



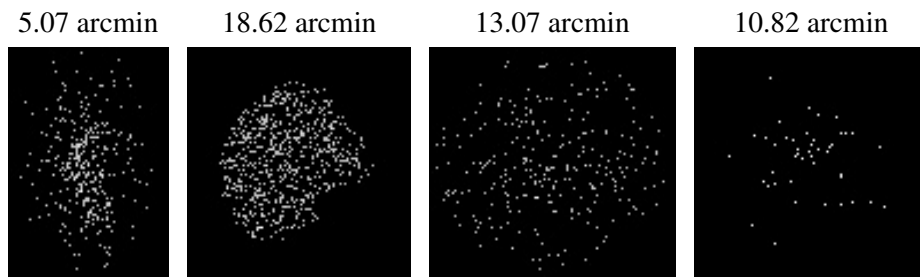
2.5.2 Slot 1



2.5.3 Slot 2



3 Point Sources



A Summary

A.1 Status

V&V Scientist	Beth Sundheim
V&V Date (YYYY-MM-DD)	2006.07.26
V&V Edition	1
V&V Disposition and Status	OK
V&V Charge Time	7.757

A.2 Comments