

V&V Reference Report

L2 ASCDS Version : 8.4.5

Observation 4121 - L2 Version 4
Chandra X-Ray Center

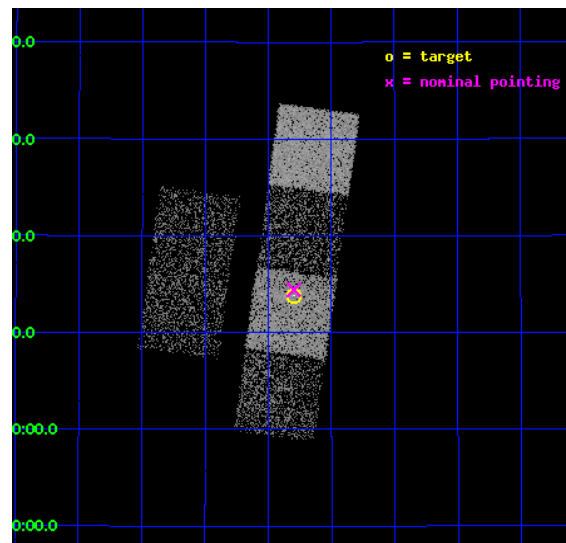
L2 Processing Date : Oct 20 2012

Contents

1	Front	2
2	OBI	3
2.1	OBI	3
2.1.1	Images	3
2.1.2	Bias	3
2.1.3	Parameters	4
2.1.4	Events	4
2.2	Compared Parameters	5
2.3	Aspect	6
2.4	Star Slots	9
2.4.1	Slot 3	9
2.4.2	Slot 4	10
2.4.3	Slot 5	11
2.4.4	Slot 6	12
2.4.5	Slot 7	13
2.5	FID Slots	14
2.5.1	Slot 0	14
2.5.2	Slot 1	15
2.5.3	Slot 2	16
A	Summary	17
A.1	Status	17
A.2	Comments	17

1 Front

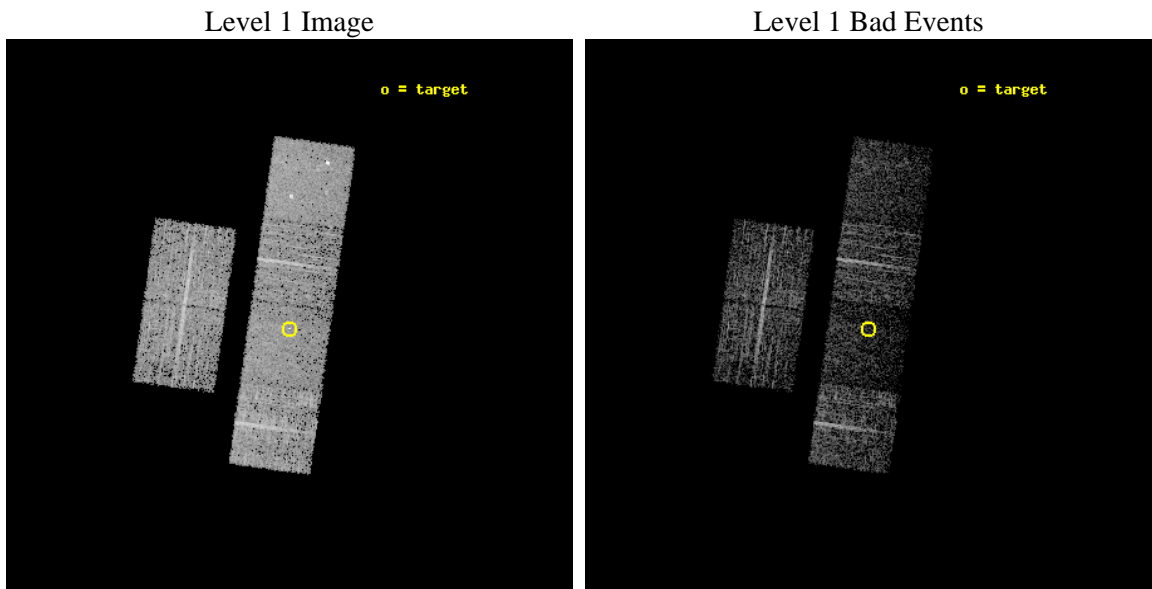
seq_num	700800	Sequence number
obs_id	4121	Observation id
title	WHAT KIND OF JETS DOES NATURE MAKE? X-RAY CHARACTERIZATION OF THE FIRST FLAT SPECTRUM SAMPLE	Proposal title
observer	Dr. Giovanni Fossati	Principal investigator
object	87GB 0850+2825	Source name
dtcycle	0	
cycle	P	events from which exps? Prim/Second/Both
ra_targ	133.324167	Observer's specified target RA [deg]
dec_targ	28.230556	Observer's specified target Dec [deg]
ra_nom	133.32438051574	Nominal RA [deg]
dec_nom	28.240308474286	Nominal Dec [deg]
roll_nom	97.987145003233	Nominal Roll [deg]
revision	4	Processing version of data
ontime	4060.5439709425	Sum of GTIs [s]
livetime	4009.1269182164	Livetime [s]
ontime2	4060.5850109458	Sum of GTIs [s]
ontime3	4060.4208509326	Sum of GTIs [s]
ontime5	4060.5029309392	Sum of GTIs [s]
ontime6	4060.4618909359	Sum of GTIs [s]
ontime7	4060.5439709425	Sum of GTIs [s]
ontime8	4060.3798109591	Sum of GTIs [s]
l2events	27505	Number of level 2 events



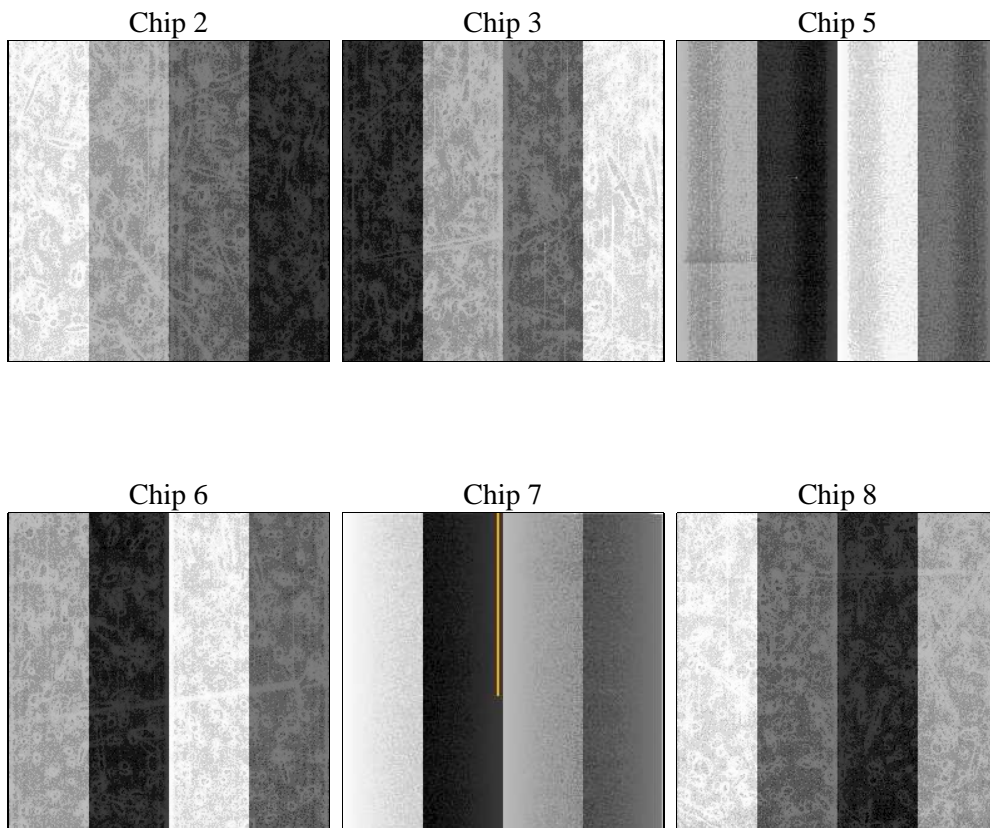
2 OBI

2.1 OBI

2.1.1 Images



2.1.2 Bias



2.1.3 Parameters

obi_num	0	Obi number	sched_exp_time	4100.000000	[s] Scheduled observation exposure time
ascdsver	8.4.5	Processing system revision	ontime	4060.5439709425	Sum of GTIs [s]
caldsver	4.5.2	 	ontime2	4060.5850109458	Sum of GTIs [s]
date	2012-10-20T16:48:26	Date and time of file creation	ontime3	4060.4208509326	Sum of GTIs [s]
revision	4	Processing version of data	ontime5	4060.5029309392	Sum of GTIs [s]
			ontime6	4060.4618909359	Sum of GTIs [s]
			ontime7	4060.5439709425	Sum of GTIs [s]
			ontime8	4060.3798109591	Sum of GTIs [s]
			l1events	130584	Number of level 1 events

2.1.4 Events

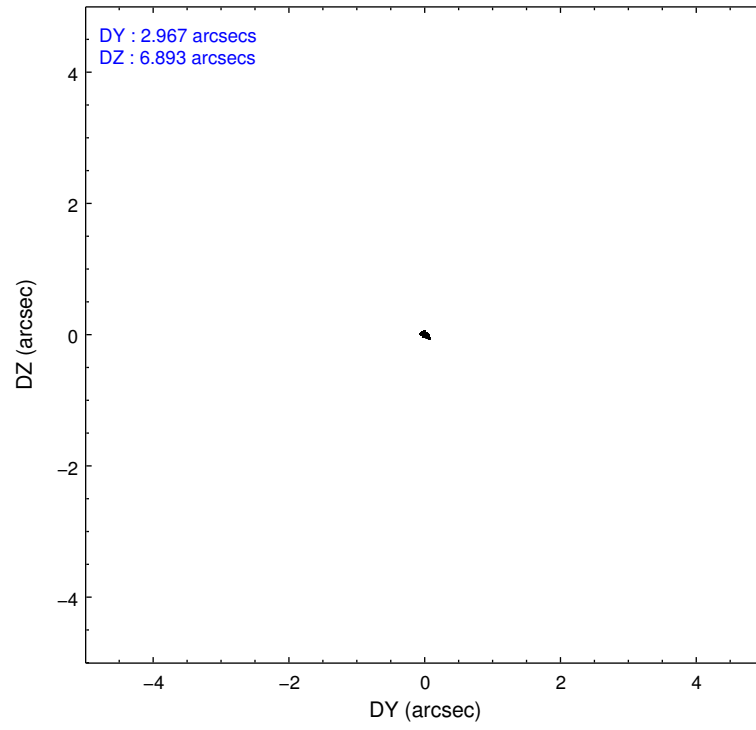
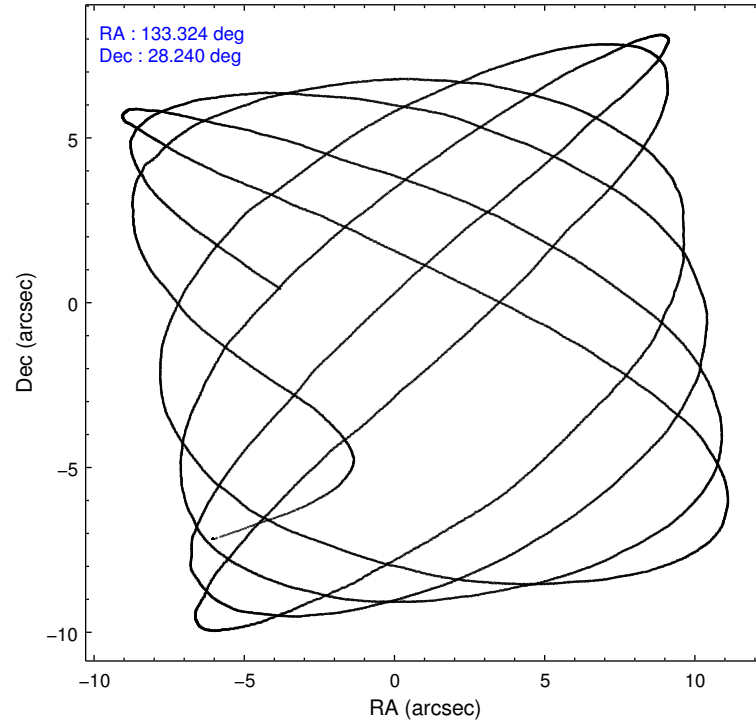
	ccd 2	ccd 3	ccd 5	ccd 6	ccd 7	ccd 8
level 1 events	21480	19467	24984	19662	18904	26087
rejected events	19619	17729	11307	17594	9494	20266
rejected %	91%	91%	45%	89%	50%	77%

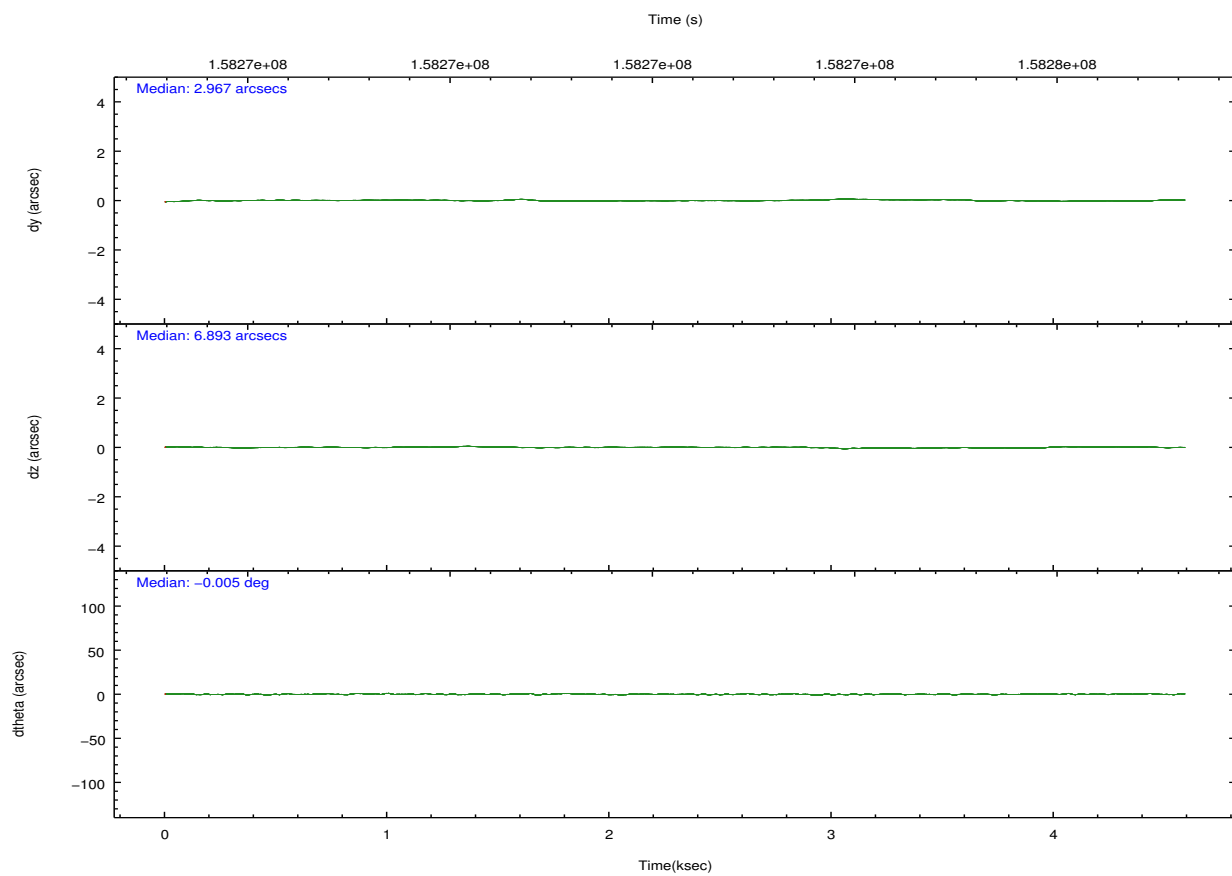
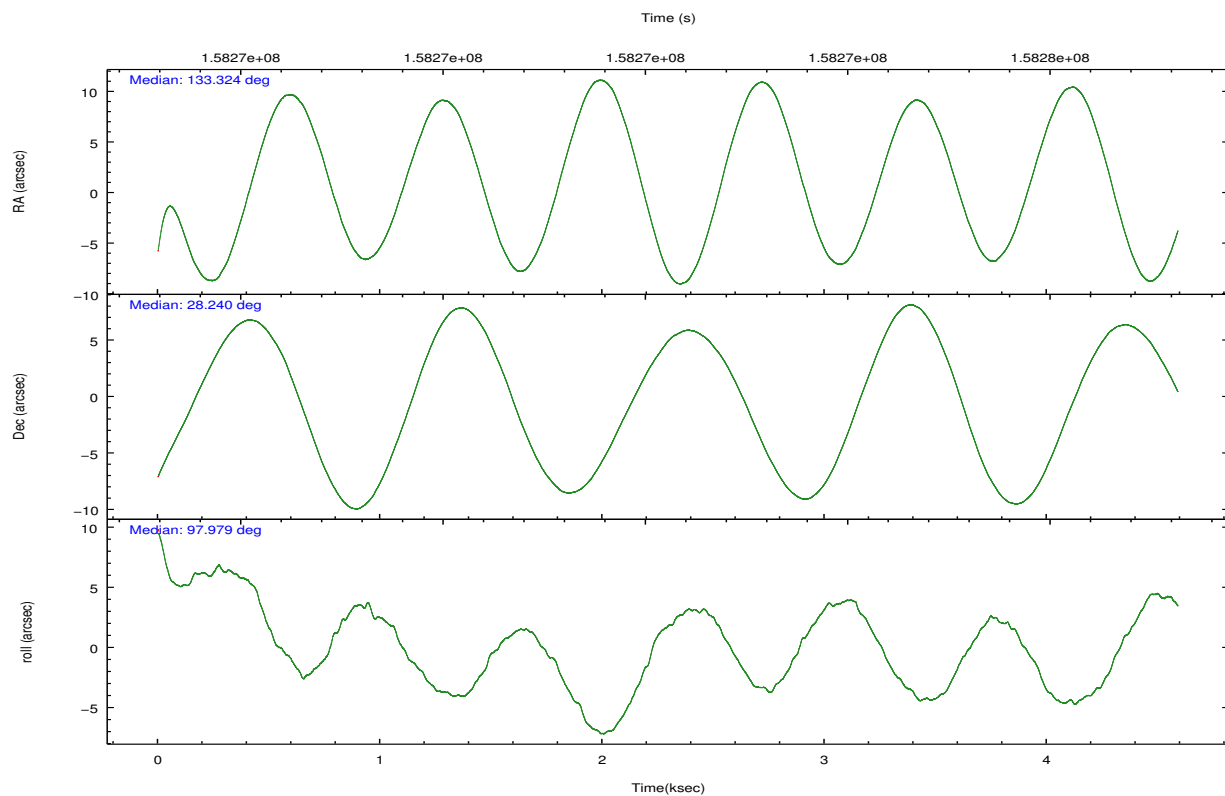
	ccd 2	ccd 3	ccd 5	ccd 6	ccd 7	ccd 8
grade 0 events	690	641	1991	738	1068	1554
	3%	3%	7%	3%	5%	5%
grade 1 events	8	13	73	7	19	21
	0%	0%	0%	0%	0%	0%
grade 2 events	405	368	4107	466	2066	1315
	1%	1%	16%	2%	10%	5%
grade 3 events	205	200	638	215	939	663
	0%	1%	2%	1%	4%	2%
grade 4 events	227	219	639	253	919	612
	1%	1%	2%	1%	4%	2%
grade 5 events	535	644	2009	691	2007	970
	2%	3%	8%	3%	10%	3%
grade 6 events	334	310	6310	396	4425	1678
	1%	1%	25%	2%	23%	6%
grade 7 events	19076	17072	9217	16896	7461	19274
	88%	87%	36%	85%	39%	73%

2.2 Compared Parameters

Parameter	Planned	Actual	Parameter	Planned	Actual
Instrument	ACIS	ACIS	Obspar format version number	7	7
Detector	ACIS-235678	ACIS-235678	Obspar file type	PREDICTED	ACTUAL
Grating	NONE	NONE	Obspar update status	NONE	UPDATED
Data mode	VFAINT	VFAINT	Number of optional ACIS chips dropped	0	0
Observation mode	POINTING	POINTING	On-chip summing requested	N	N
[deg] Pointing RA	133.343917	133.3243805157408	Subarray requested	NONE	NONE
[deg] Pointing Dec	28.218982	28.24030847428595	Alternating exposures requested	N	N
[deg] Pointing Roll	97.821270	97.98714500323331	[s] Primary exposure time	0.000000	3.2
[mm] SIM focus pos	-0.684267	-0.6828225247311905			
[mm] SIM defocus	0	0.001444936568705701			
[mm] SIM translation stage pos	-190.132523	-190.1400660498719			
[mm] SIM translation stage offset	0	0.00754346686406393			
[s] Observation start time (MET)	158271309.184000	158270192.78834			
Observation start date	2003-01-06T20:14:05	2003-01-06T19:56:32			
[s] Observation end time (MET)	158275409.184000	158276073.21359			
Observation end date	2003-01-06T21:22:25	2003-01-06T21:34:33			
Read mode	TIMED	TIMED			

2.3 Aspect



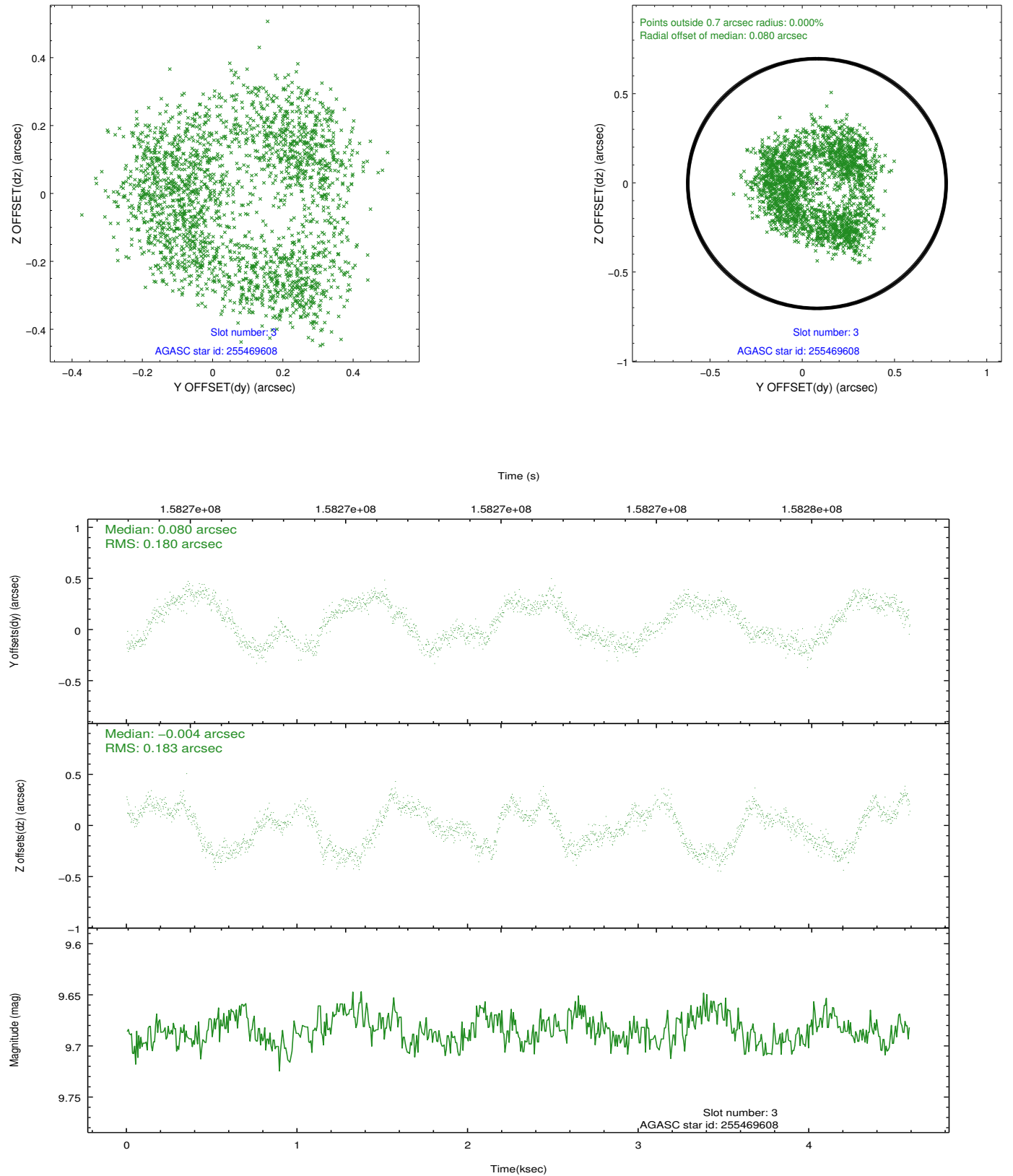


Slot Statistics

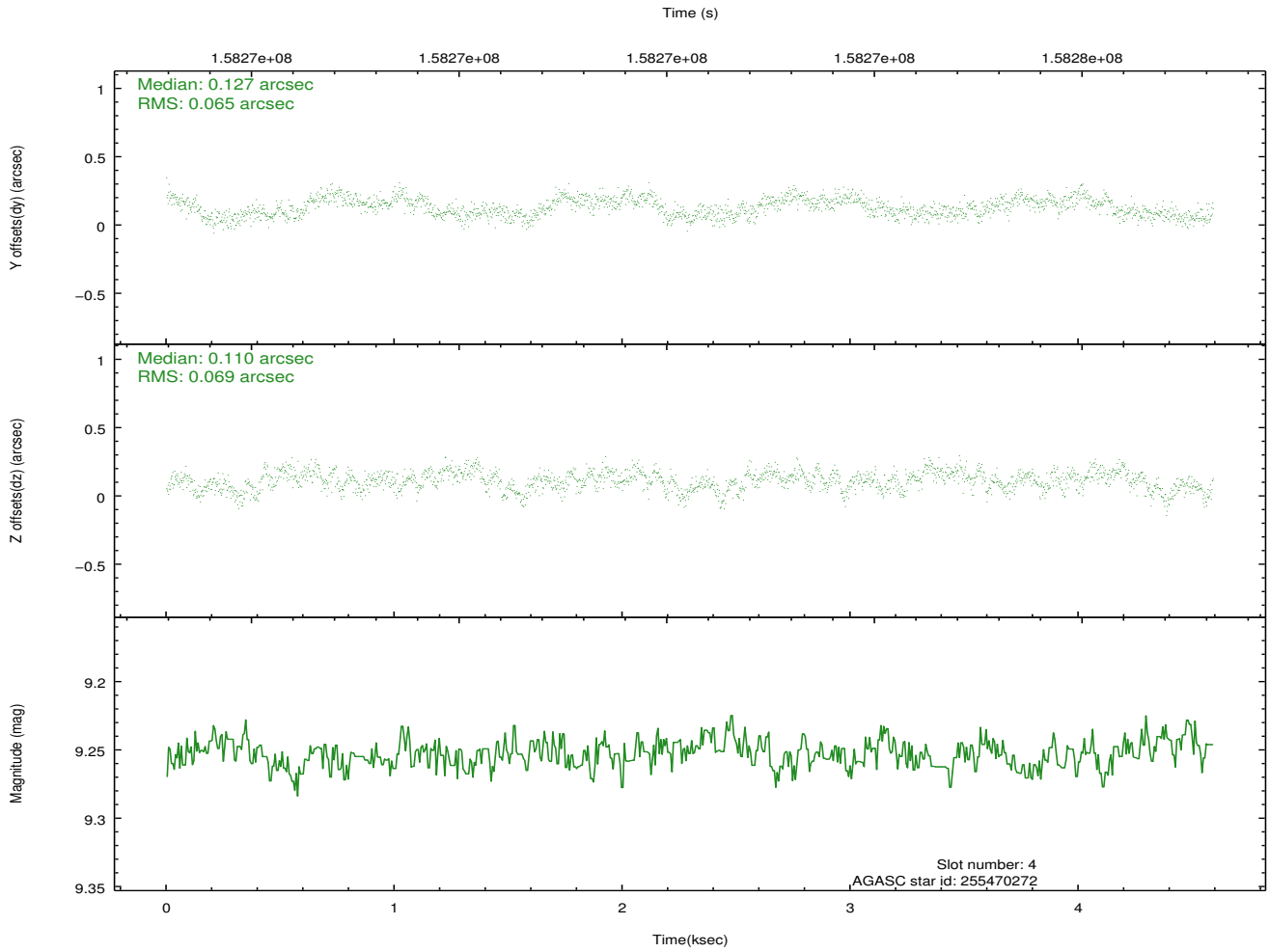
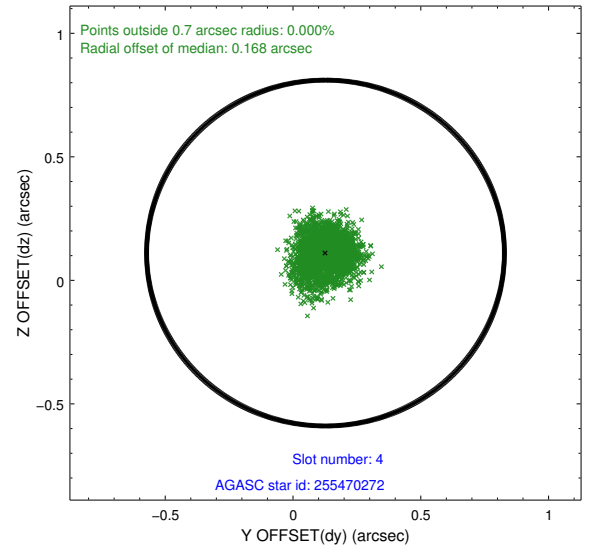
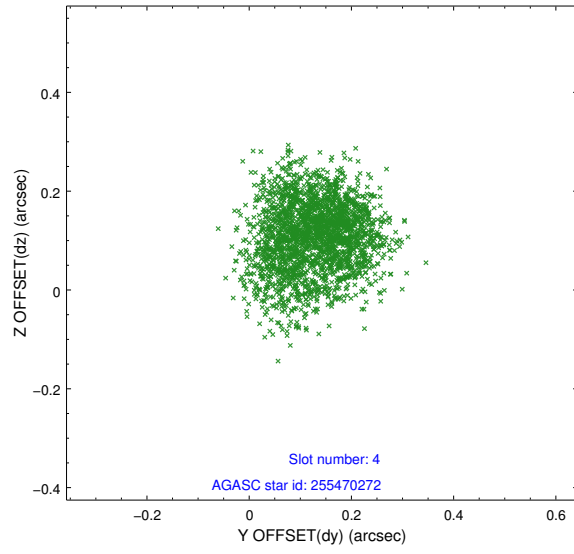
slot	status	id	mag	n_pts	med_dy	med_dz	dr1	dr2	ra	dec	mean_y	mean_z
0	FID	ACIS-S-2	7.12	1120	-0.030	-0.004	0.007	0.012	0.000000	0.000000	-755.62	-1728.07
1	FID	ACIS-S-4	7.20	1119	0.009	0.015	0.005	0.010	0.000000	0.000000	2157.07	179.08
2	FID	ACIS-S-5	7.24	1119	-0.010	-0.002	0.007	0.010	0.000000	0.000000	-1806.74	174.22
3	GUIDE	255469608	9.68	2179	0.080	-0.004	0.283	0.374	133.139462	28.557588	1295.49	474.08
4	GUIDE	255470272	9.25	2240	0.127	0.110	0.103	0.159	133.844161	28.114281	-585.79	-1523.04
5	GUIDE	255474504	8.75	2238	0.074	0.037	0.080	0.128	132.940588	28.021724	-527.67	1364.86
6	GUIDE	255472000	8.74	2237	0.014	-0.098	0.098	0.150	132.648499	28.117541	-55.88	2236.23
7	GUIDE	255469712	7.24	2239	-0.283	-0.034	0.095	0.133	133.072289	28.856520	2390.59	536.71

2.4 Star Slots

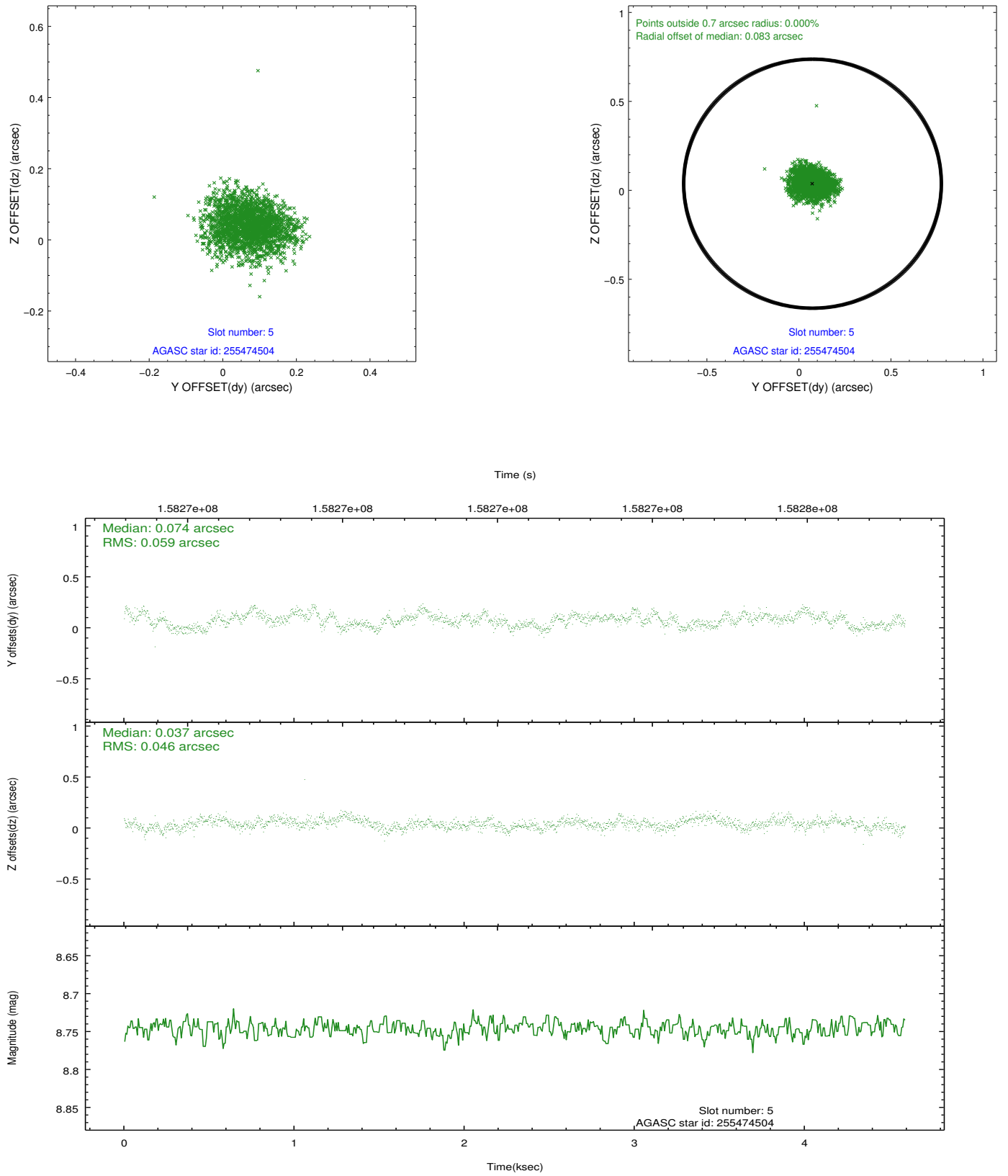
2.4.1 Slot 3



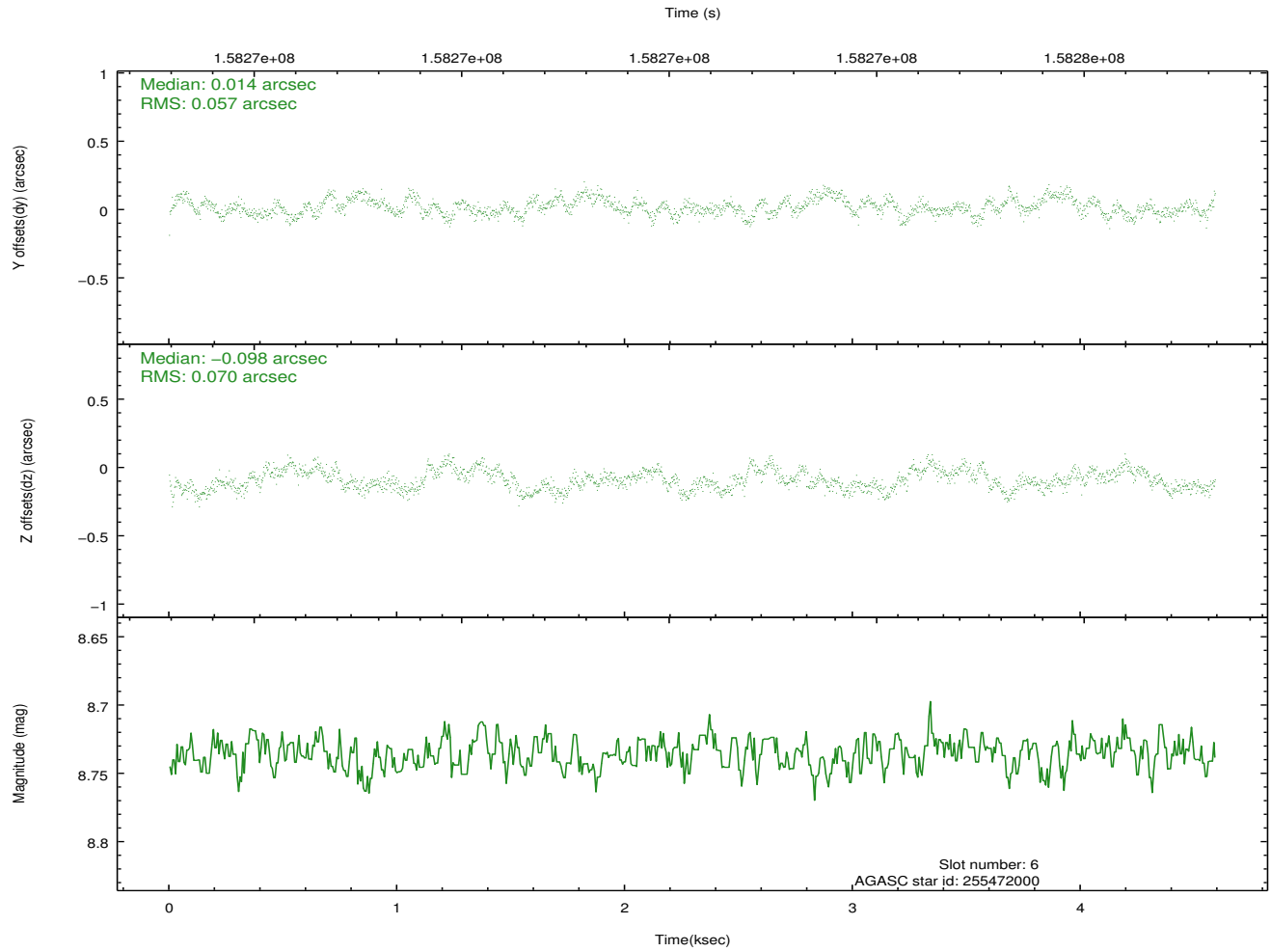
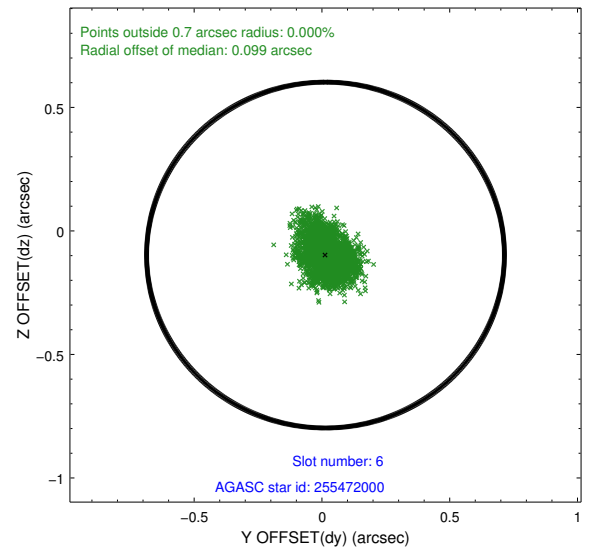
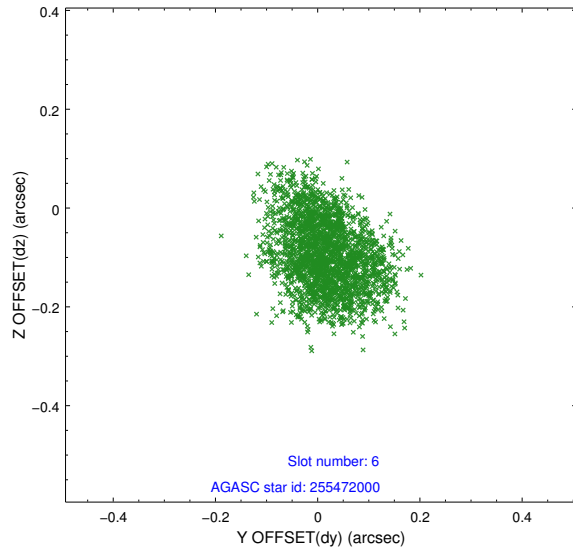
2.4.2 Slot 4



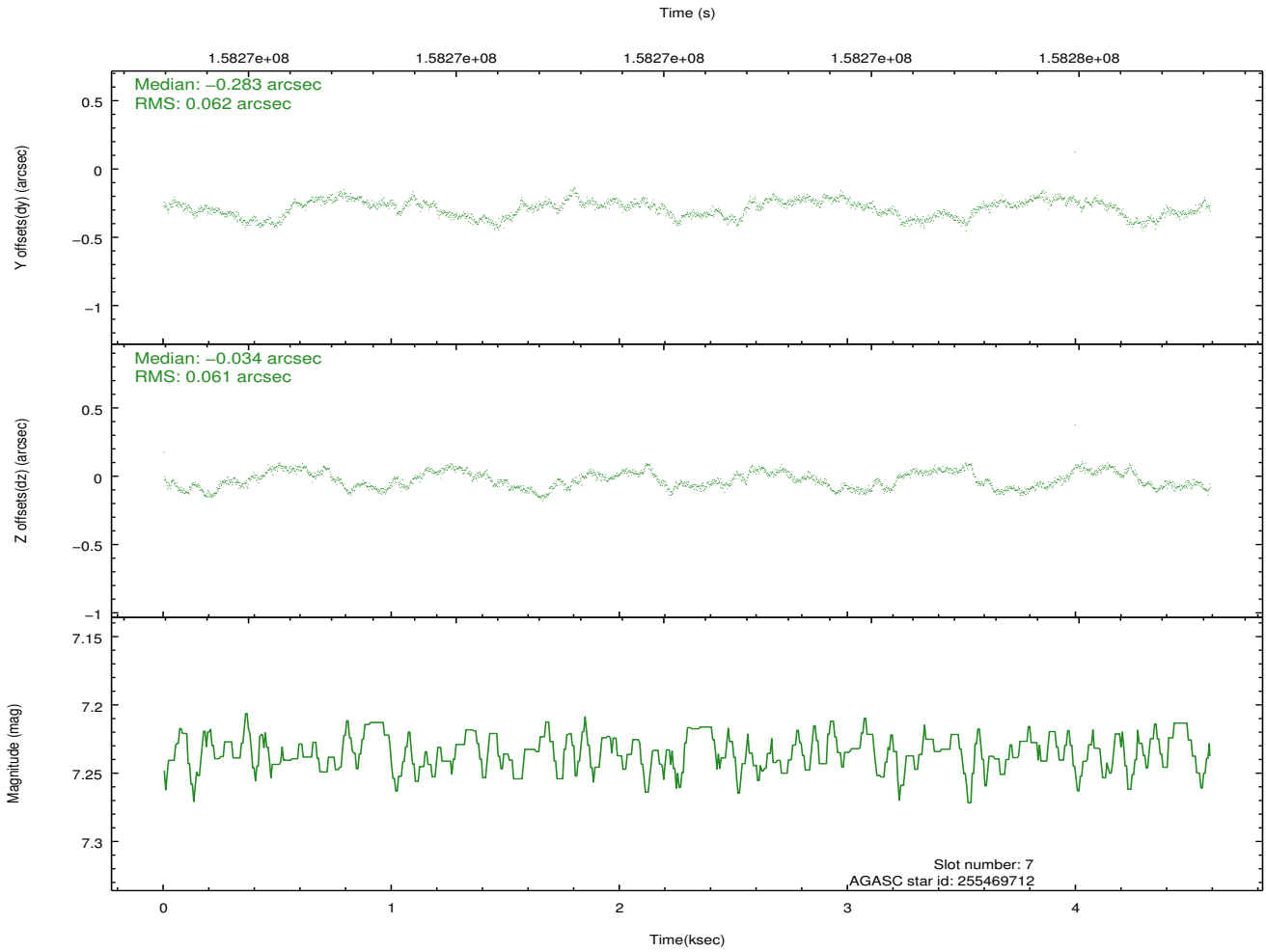
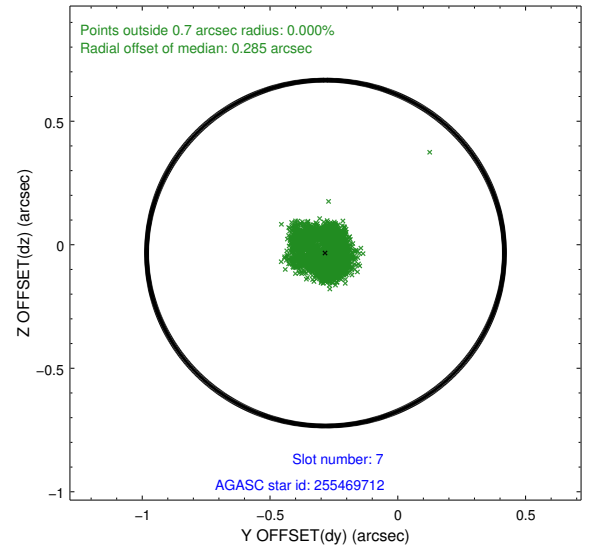
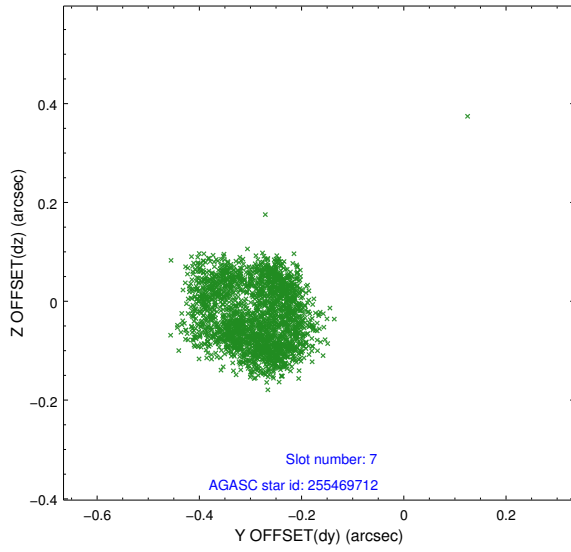
2.4.3 Slot 5



2.4.4 Slot 6

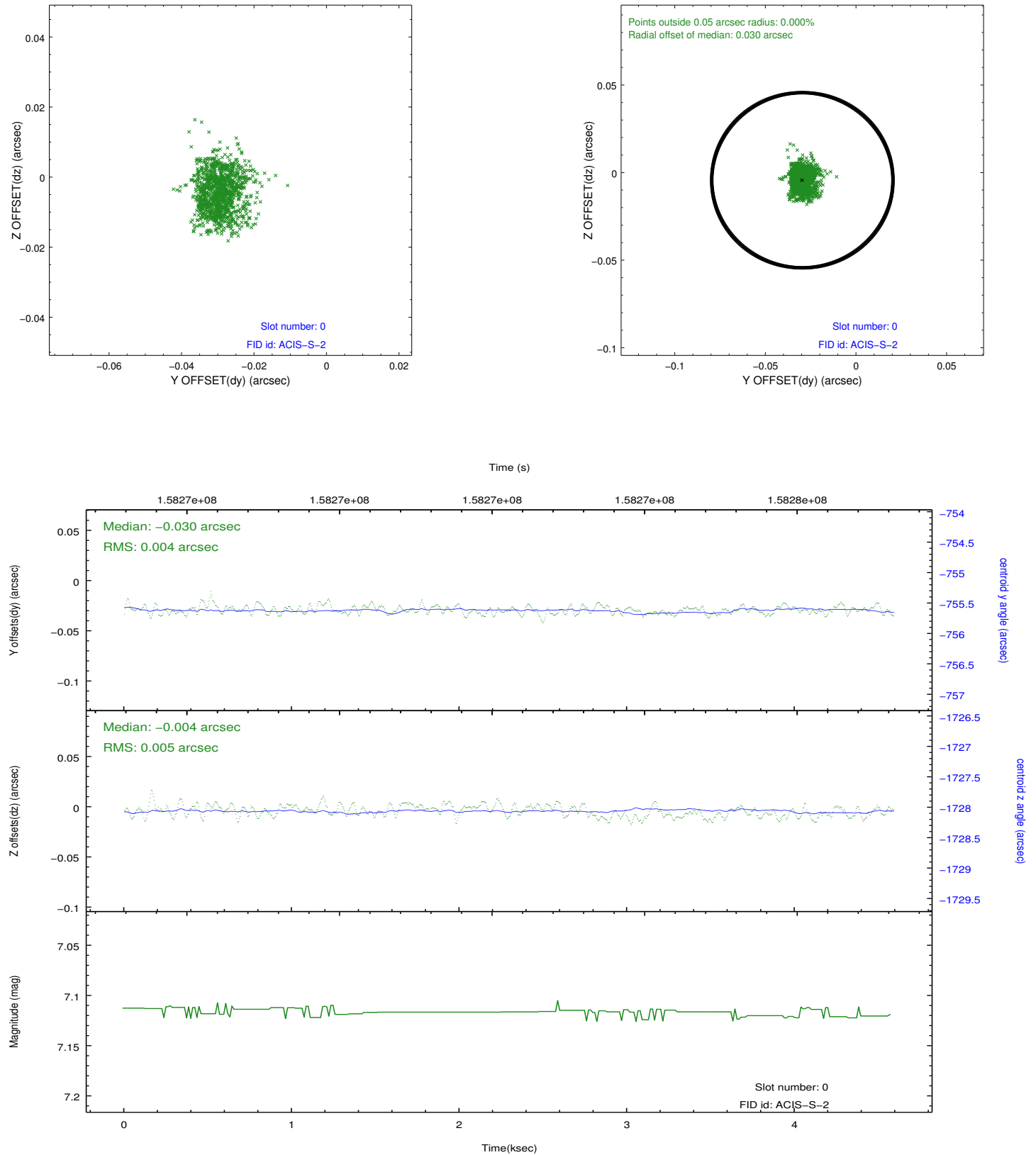


2.4.5 Slot 7

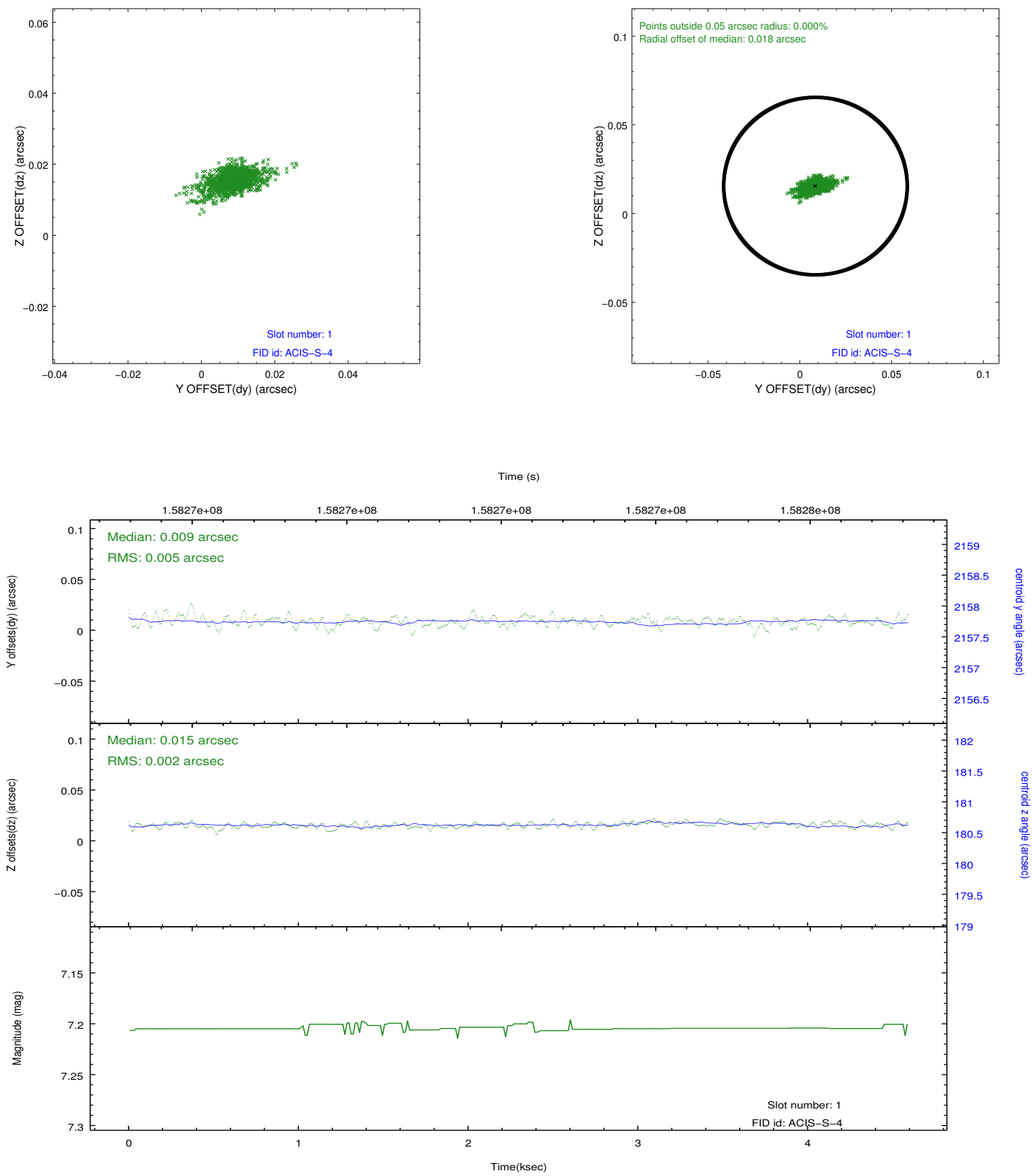


2.5 FID Slots

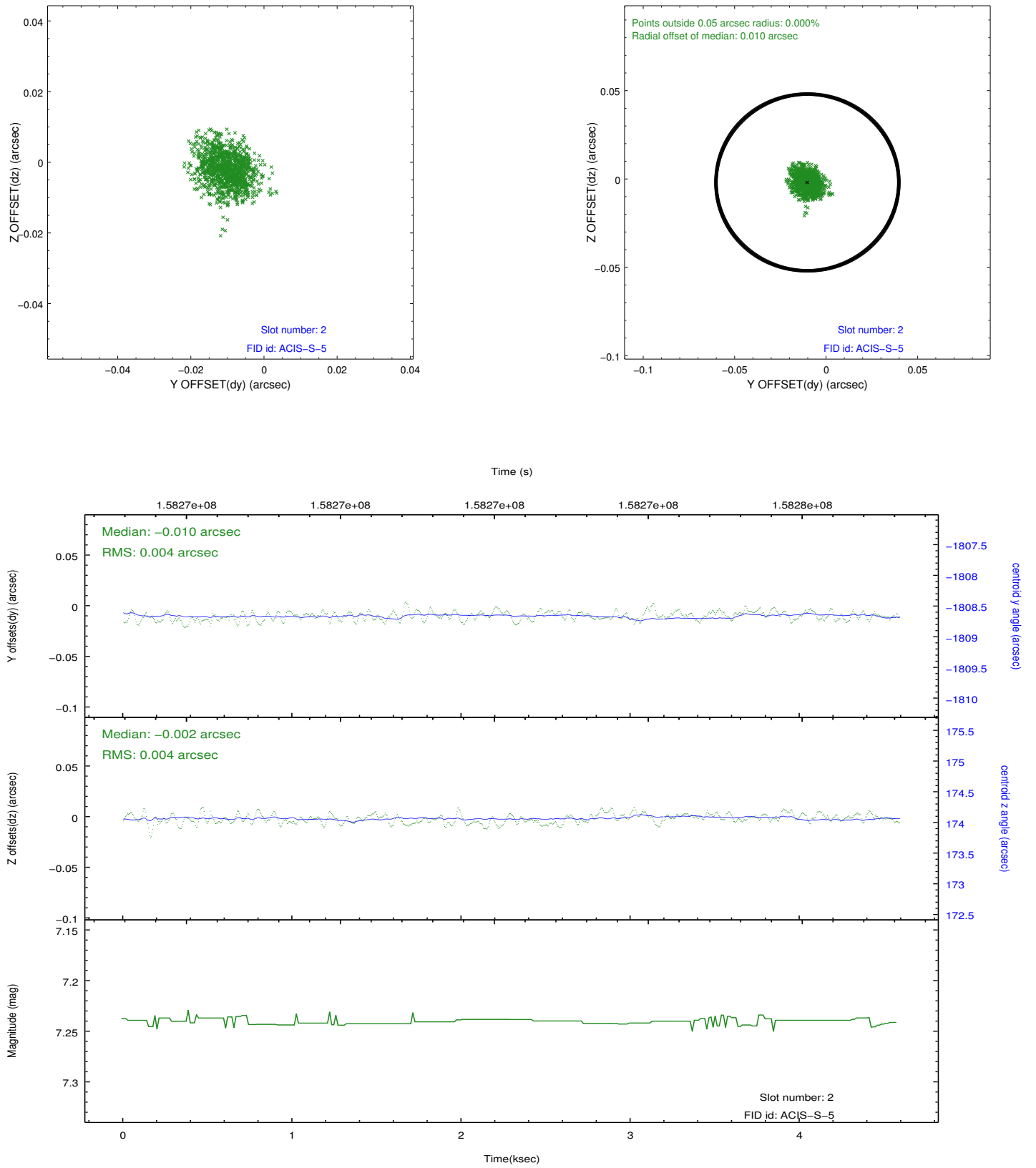
2.5.1 Slot 0



2.5.2 Slot 1



2.5.3 Slot 2



A Summary

A.1 Status

V&V Scientist	Jen Lauer
V&V Date (YYYY-MM-DD)	2012.10.31
V&V Edition	1
V&V Disposition and Status	OK
V&V Charge Time	4.06

A.2 Comments