

V&V Reference Report

L2 ASCDS Version : 7.6.9

Observation 4121 - L2 Version 001
Chandra X-Ray Center

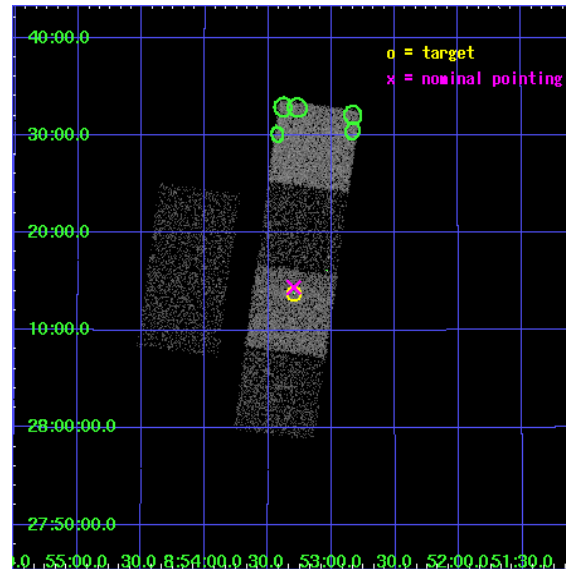
L2 Processing Date : Oct 18 2006

Contents

1	Front	2
2	OBI	3
2.1	OBI	3
2.1.1	Images	3
2.1.2	Bias	3
2.1.3	Parameters	4
2.1.4	Events	4
2.2	Compared Parameters	5
2.3	Aspect	6
2.4	Star Slots	9
2.4.1	Slot 3	9
2.4.2	Slot 4	10
2.4.3	Slot 5	11
2.4.4	Slot 6	12
2.4.5	Slot 7	13
2.5	FID Slots	14
2.5.1	Slot 0	14
2.5.2	Slot 1	15
2.5.3	Slot 2	16
3	Point Sources	17
A	Summary	18
A.1	Status	18
A.2	Comments	18

1 Front

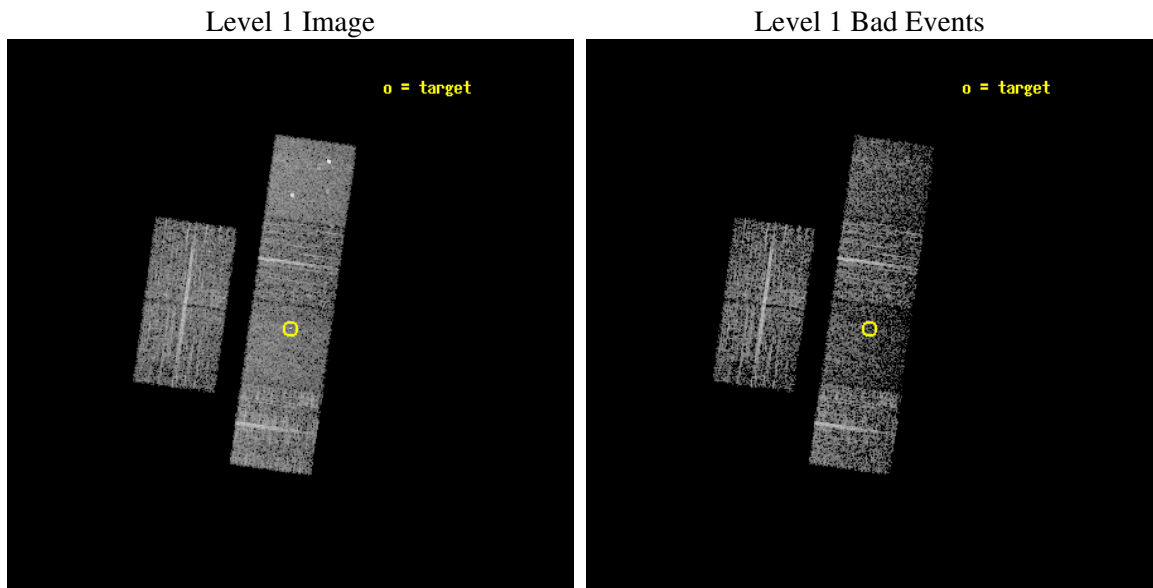
seq_num	700800
obs_id	4121
title	WHAT KIND OF JETS DOES NATURE MAKE? X-RAY CHARACTERIZATION OF THE FIRST FLAT SPECTRUM SAMPLE
observer	Dr. Giovanni Fossati
object	87GB 0850+2825
dtcycle	0
cycle	P
ra_targ	133.324167
dec_targ	28.230556
ra_nom	133.32438051574
dec_nom	28.240308474286
roll_nom	97.987145003233
revision	3
ontime	4060.7999848723
livetime	4009.3796903437
ontime2	4060.7999848723
ontime3	4060.7999848723
ontime5	4060.7999848723
ontime6	4060.7999848723
ontime7	4060.7999848723
ontime8	4060.7999848723
l2events	26511



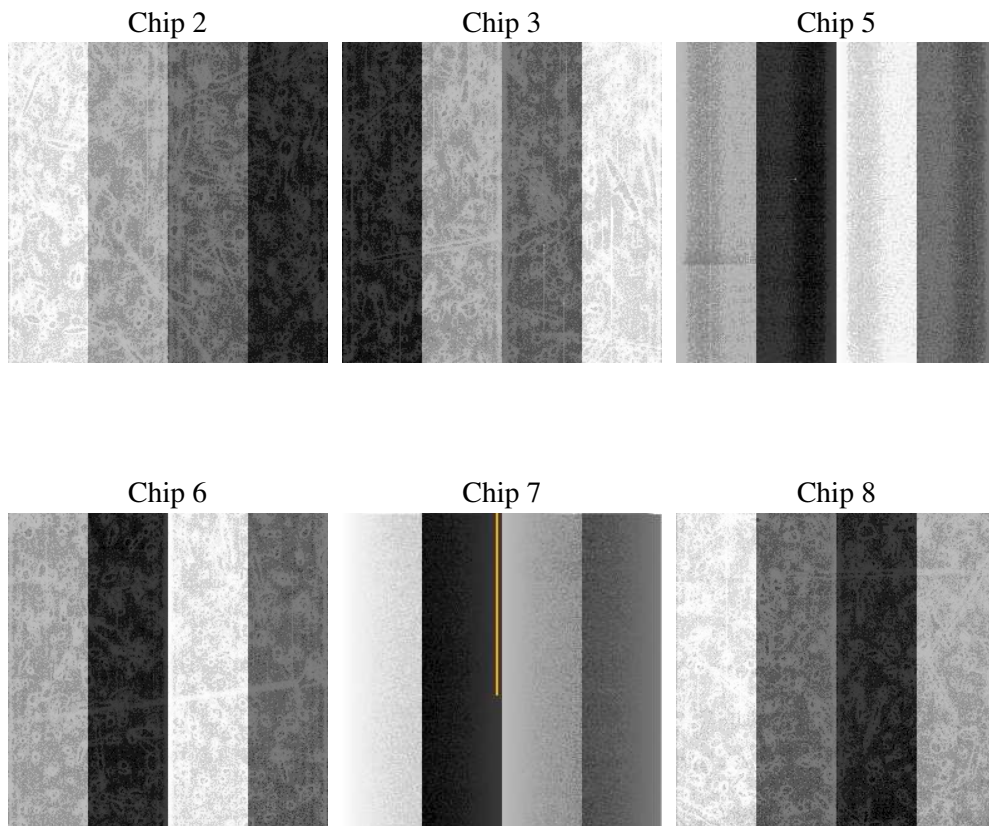
2 OBI

2.1 OBI

2.1.1 Images



2.1.2 Bias



2.1.3 Parameters

obi_num	0
ascdsver	7.6.9
caldsver	3.2.3
date	2006-10-18T20:38:14
revision	3

sched_exp_time	4100.000000
ontime	4064.2237400115
ontime2	4064.2237400115
ontime3	4064.2237201333
ontime5	4064.2237400115
ontime6	4064.2237201333
ontime7	4064.2237400115
ontime8	4064.2237400115
l1events	130584

2.1.4 Events

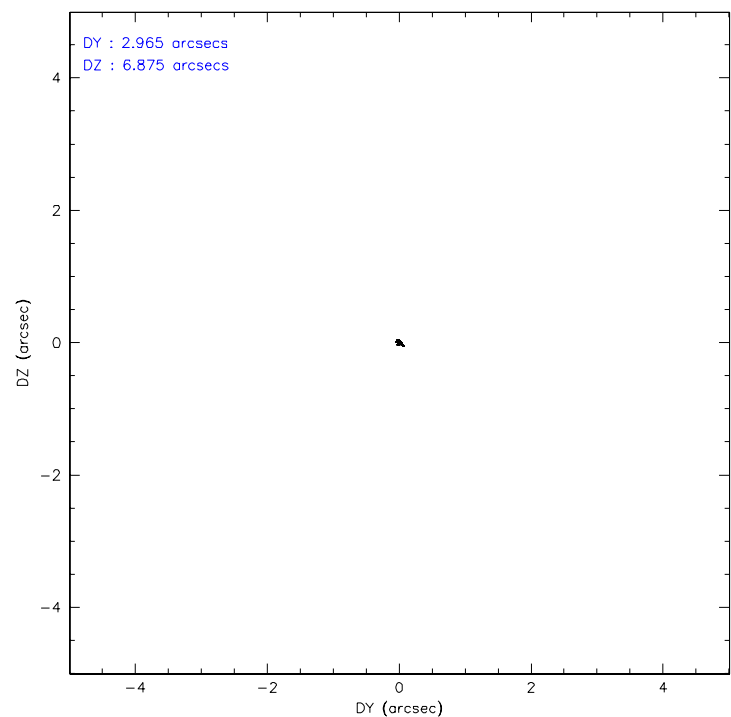
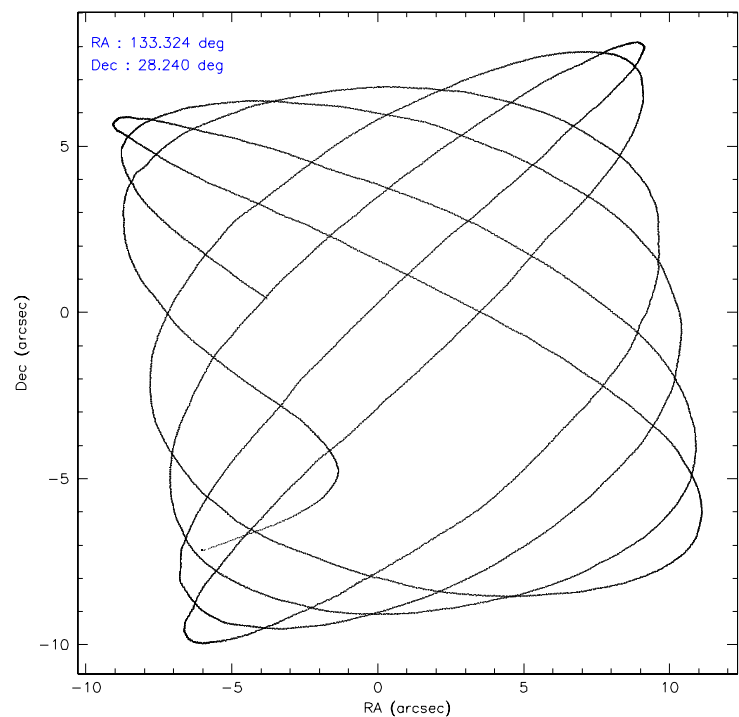
	ccd 2	ccd 3	ccd 5	ccd 6	ccd 7	ccd 8
level 1 events	21480	19467	24984	19662	18904	26087
rejected events	19619	17729	11726	17593	10115	20266
rejected %	91%	91%	46%	89%	53%	77%

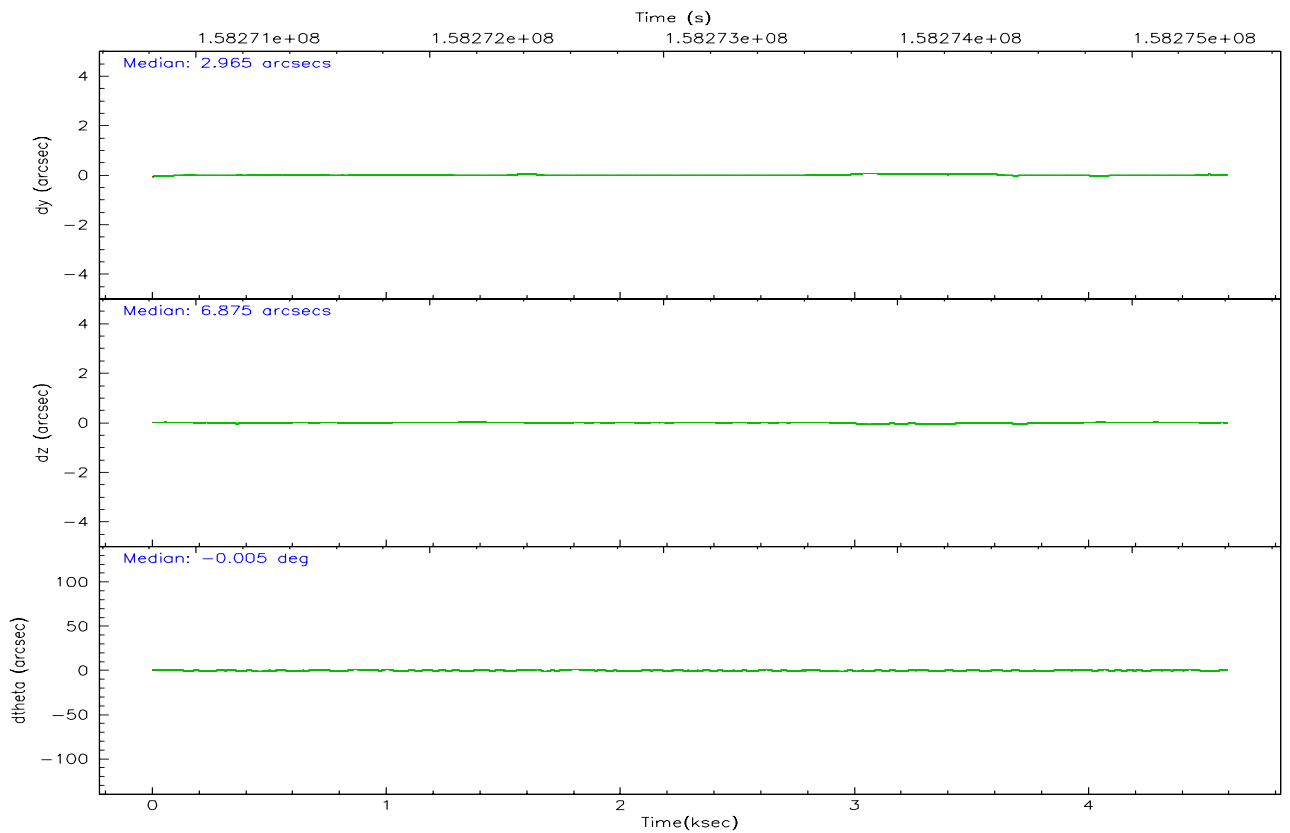
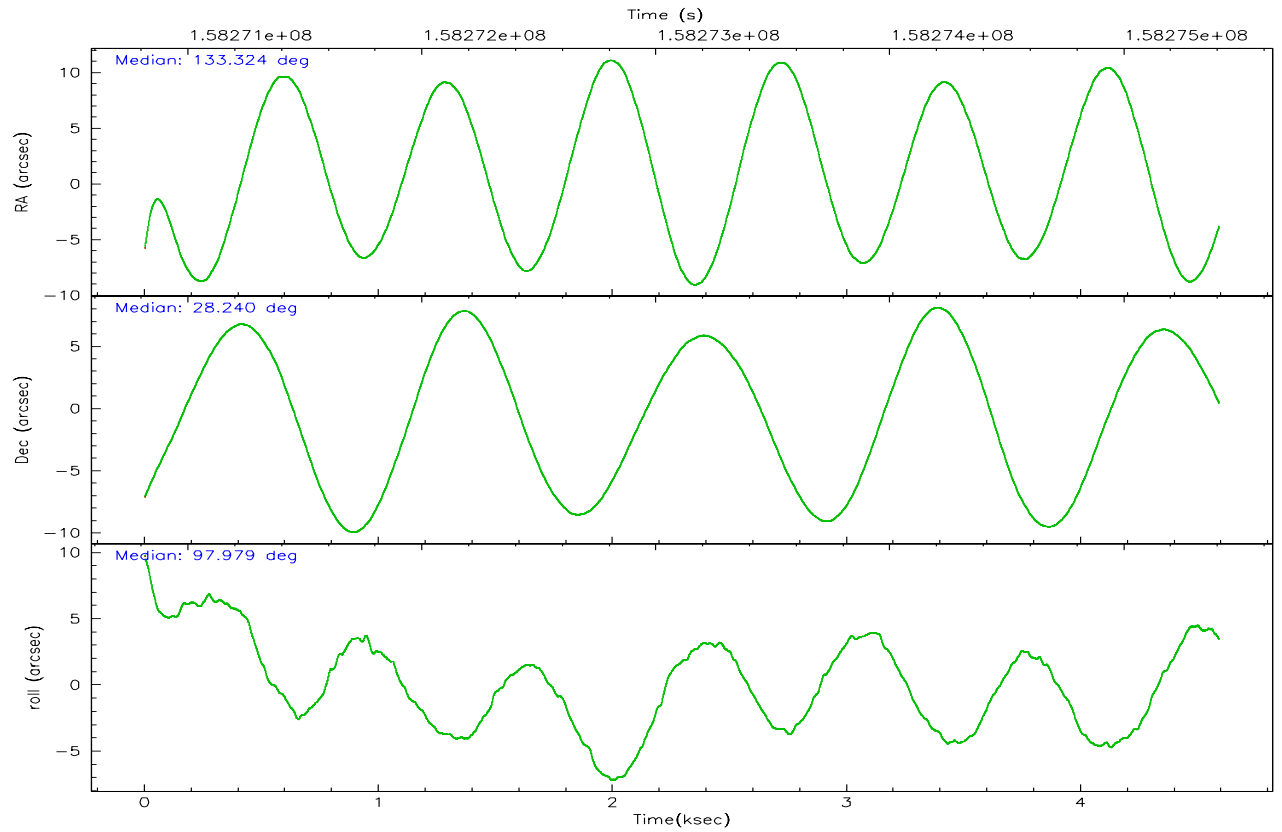
	ccd 2	ccd 3	ccd 5	ccd 6	ccd 7	ccd 8
grade 0 events	690	641	1626	738	691	1554
	3%	3%	6%	3%	3%	5%
grade 1 events	8	13	64	7	12	21
	0%	0%	0%	0%	0%	0%
grade 2 events	405	368	4249	466	2375	1315
	1%	1%	17%	2%	12%	5%
grade 3 events	205	200	343	214	586	663
	0%	1%	1%	1%	3%	2%
grade 4 events	227	219	361	253	547	612
	1%	1%	1%	1%	2%	2%
grade 5 events	535	644	1322	690	1476	969
	2%	3%	5%	3%	7%	3%
grade 6 events	334	310	6687	398	4596	1678
	1%	1%	26%	2%	24%	6%
grade 7 events	19076	17072	10332	16896	8621	19275
	88%	87%	41%	85%	45%	73%

2.2 Compared Parameters

Parameter	Planned	Actual	Parameter	Planned	Actual
Instrument	ACIS	ACIS	Obspar format version number	6	6
Detector	ACIS-235678	ACIS-235678	Obspar file type	PREDICTED	ACTUAL
Grating	NONE	NONE	Obspar update status	NONE	UPDATED
Data mode	VFAINT	VFAINT	Number of optional ACIS chips dropped	0	0
Observation mode	POINTING	POINTING	On-chip summing requested	N	N
Pointing RA	133.343917	133.3243805157408	Subarray requested	NONE	NONE
Pointing Dec	28.218982	28.24030847428595	Alternating exposures requested	N	N
Pointing Roll	97.821270	97.98714500323331	Primary exposure time	0.000000	3.2
SIM focus pos (mm)	-0.684267	-0.6828225247311905			
SIM defocus (mm)	0	0.001444936568705701			
SIM translation stage pos (mm)	-190.132523	-190.1400660498719			
SIM translation stage offset (mm)	0	0.00754346686406393			
Observation start time	158271309.184000	158270192.78834			
Observation start date	2003-01-06T20:14:05	2003-01-06T19:56:32			
Observation end time	158275409.184000	158276073.21359			
Observation end date	2003-01-06T21:22:25	2003-01-06T21:34:33			
Read mode	TIMED	TIMED			

2.3 Aspect



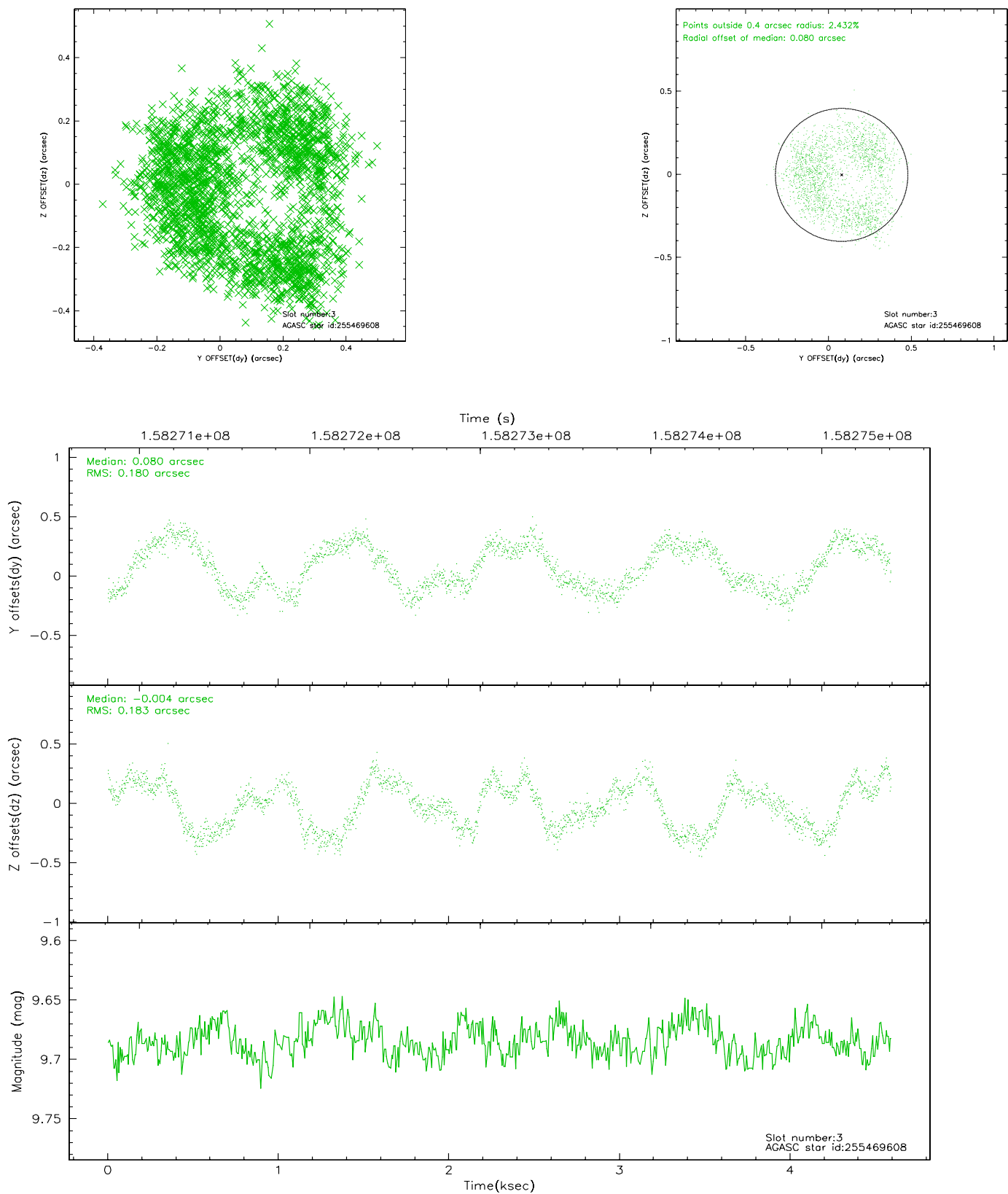


Slot Statistics

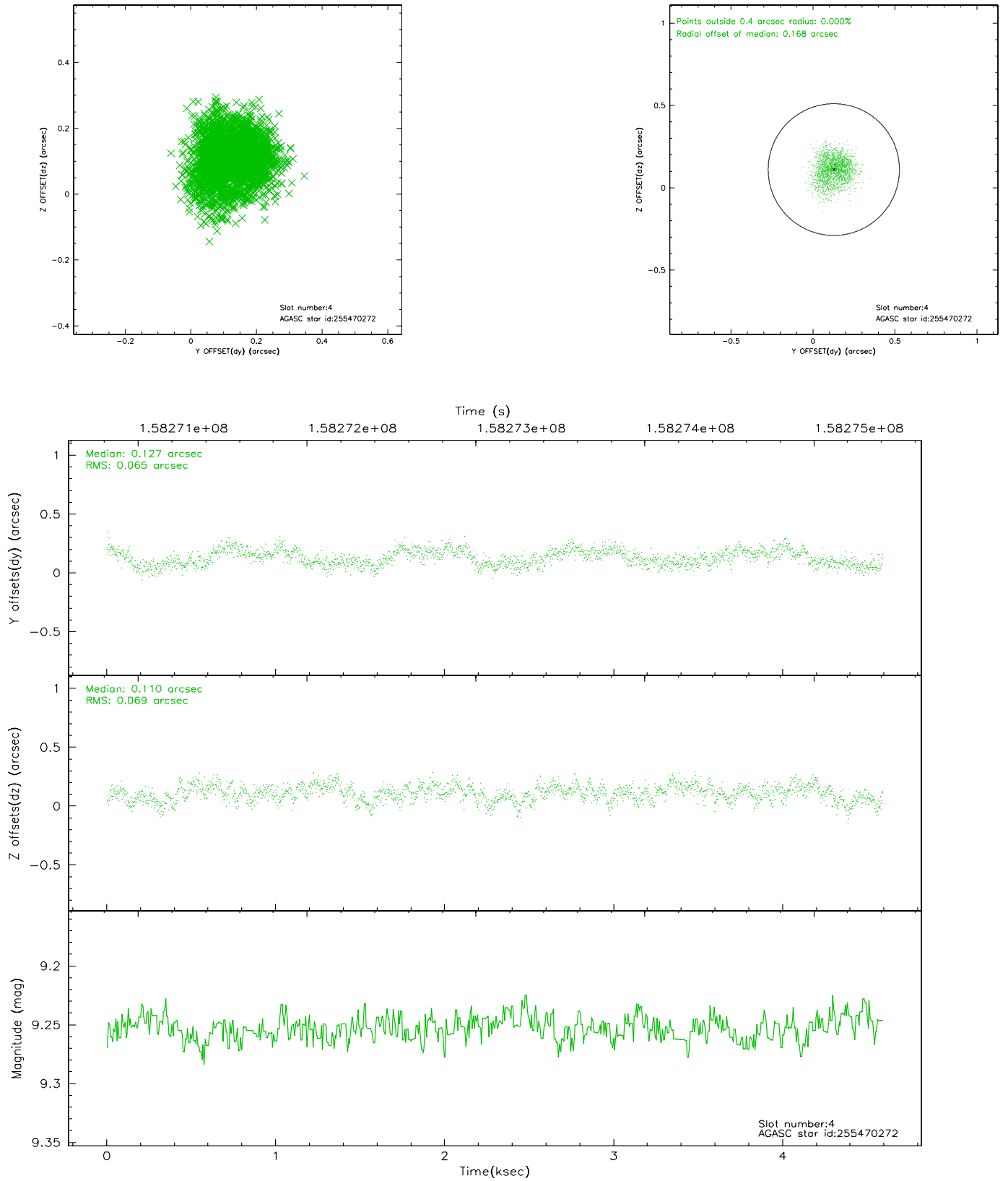
slot	status	id	mag	n_pts	med_dy	med_dz	dr1	dr2	ra	dec	mean_y	mean_z
0	FID	ACIS-S-2	7.12	1120	-0.018	0.019	0.007	0.012	0.000000	0.000000	-755.61	-1728.02
1	FID	ACIS-S-4	7.20	1119	-0.034	0.004	0.005	0.009	0.000000	0.000000	2157.03	179.09
2	FID	ACIS-S-5	7.24	1119	0.021	-0.014	0.006	0.010	0.000000	0.000000	-1806.71	174.23
3	GUIDE	255469608	9.68	2179	0.080	-0.004	0.283	0.374	133.139462	28.557588	1295.49	474.08
4	GUIDE	255470272	9.25	2240	0.127	0.110	0.103	0.159	133.844161	28.114281	-585.79	-1523.04
5	GUIDE	255474504	8.75	2238	0.074	0.037	0.080	0.128	132.940588	28.021724	-527.67	1364.86
6	GUIDE	255472000	8.74	2237	0.014	-0.098	0.098	0.150	132.648499	28.117541	-55.88	2236.23
7	GUIDE	255469712	7.24	2239	-0.283	-0.034	0.095	0.133	133.072289	28.856520	2390.59	536.71

2.4 Star Slots

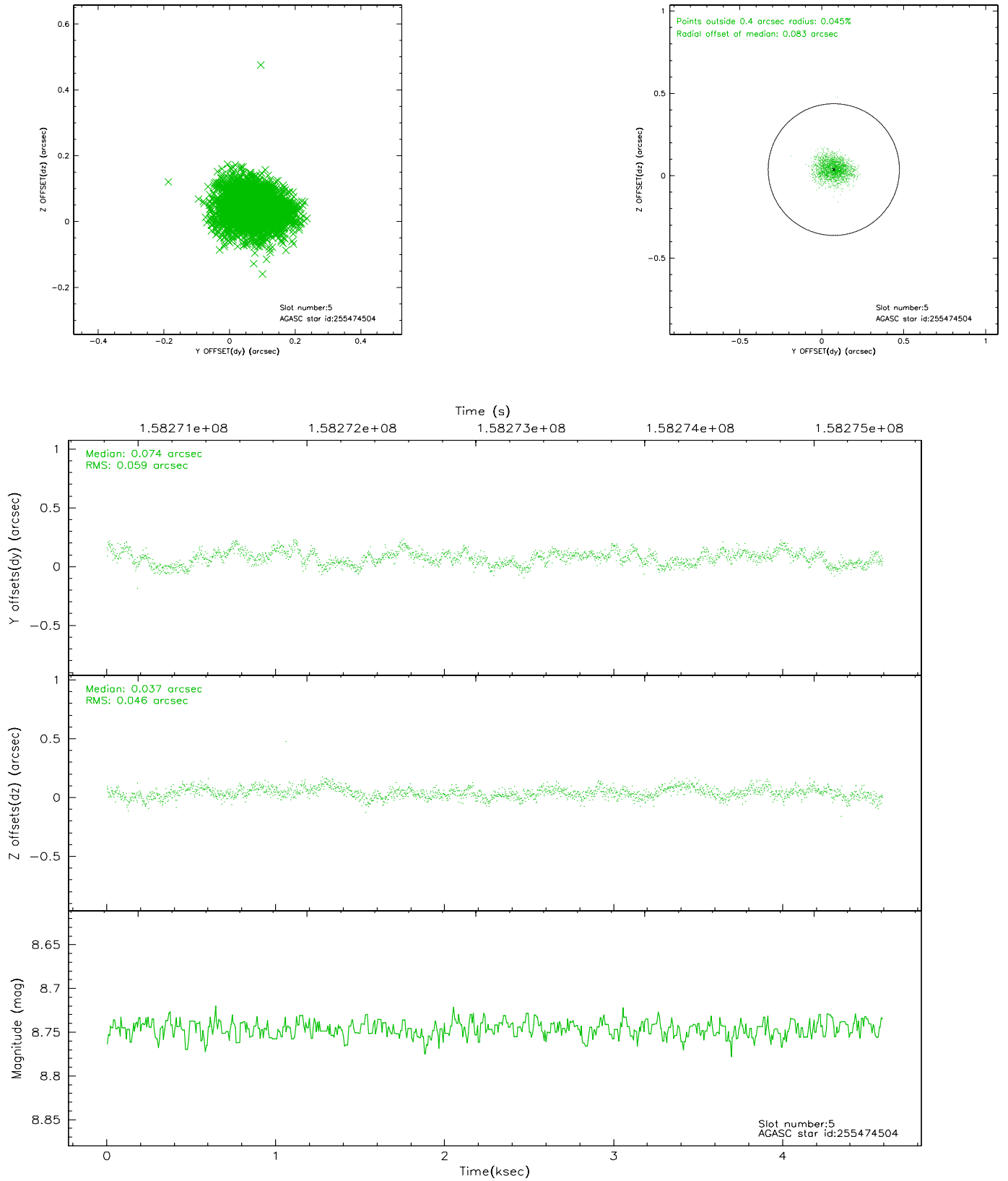
2.4.1 Slot 3



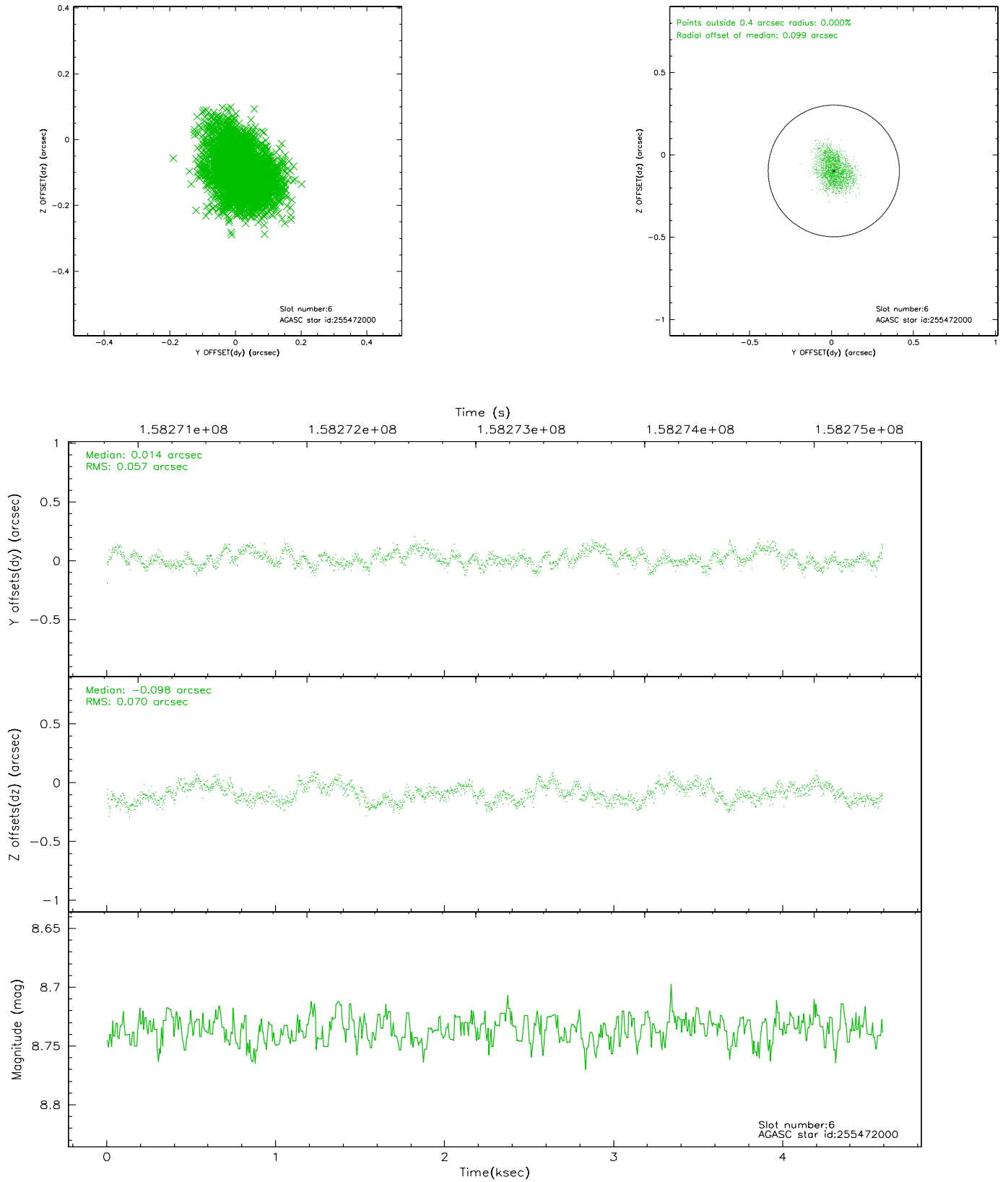
2.4.2 Slot 4



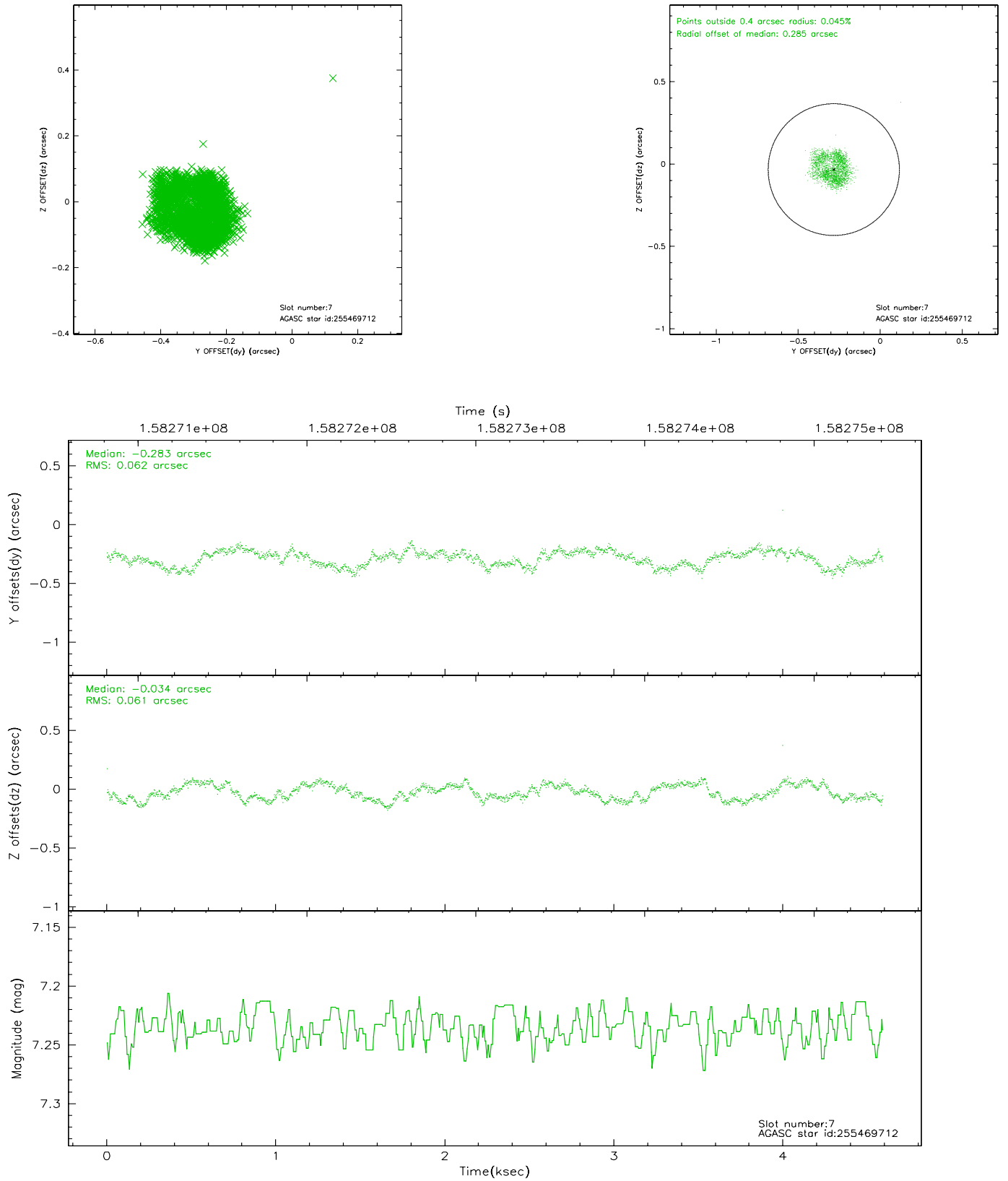
2.4.3 Slot 5



2.4.4 Slot 6

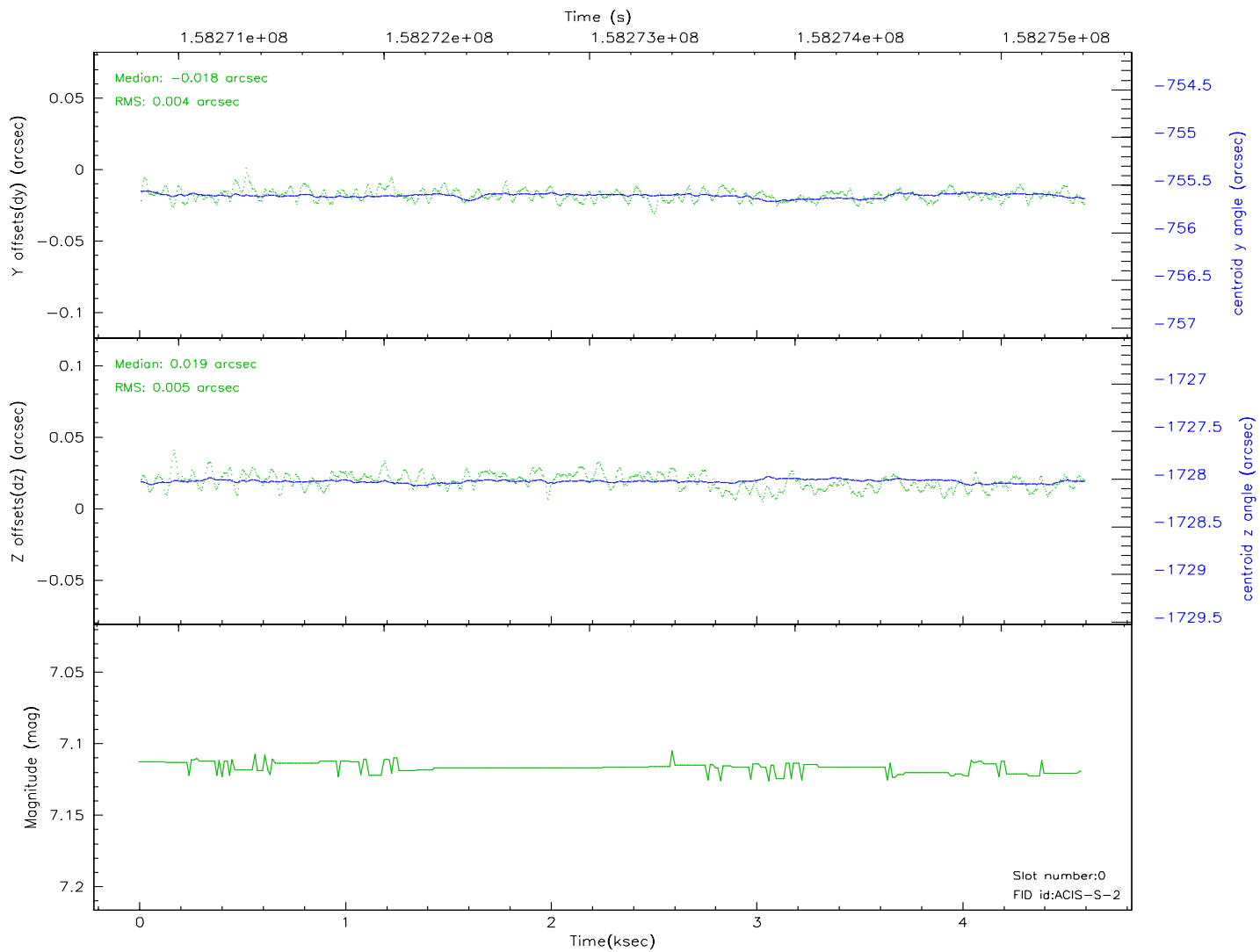
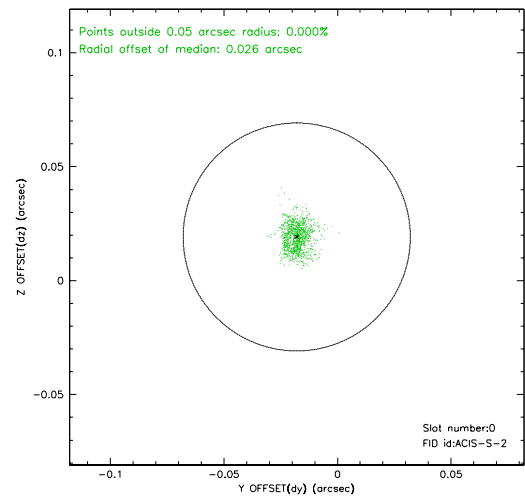
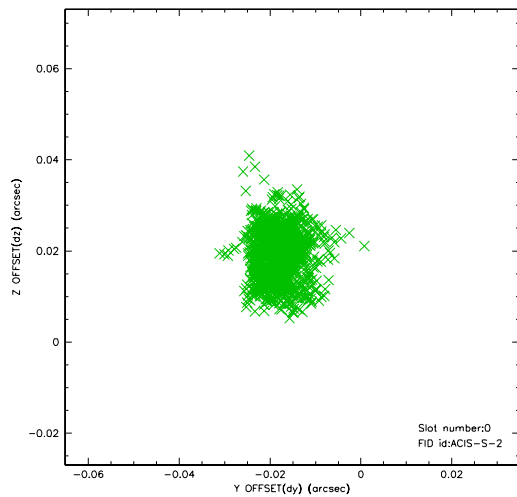


2.4.5 Slot 7

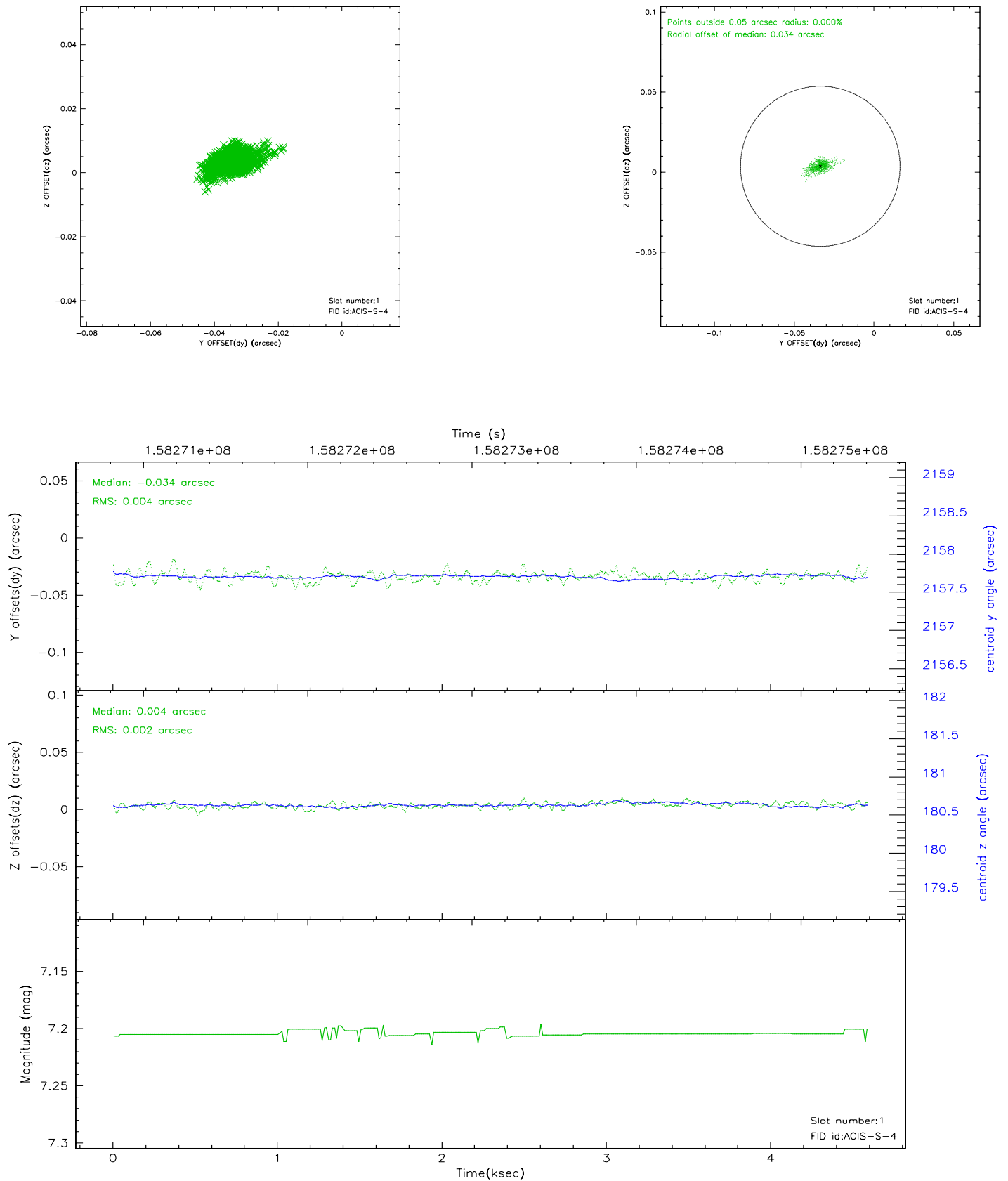


2.5 FID Slots

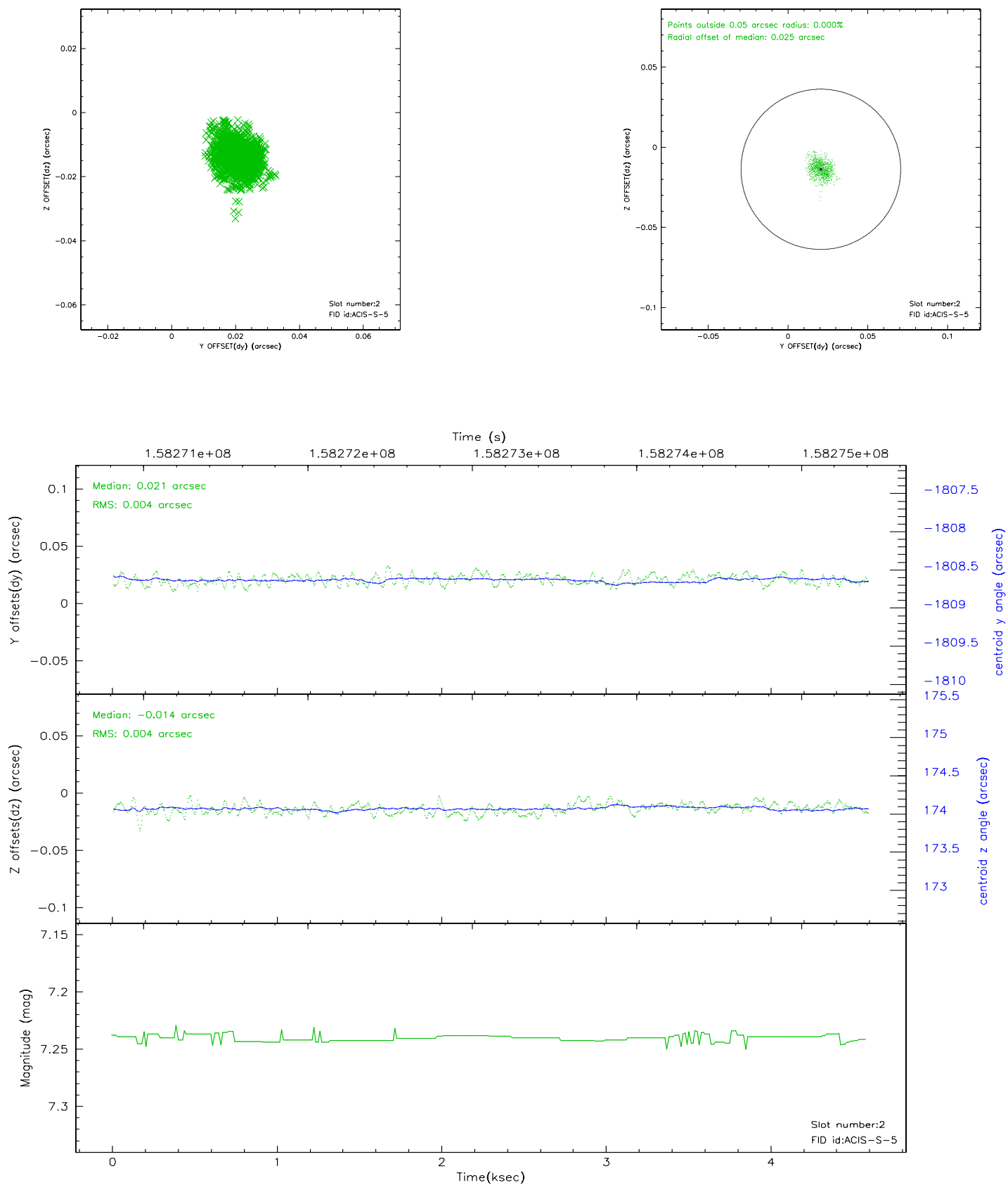
2.5.1 Slot 0



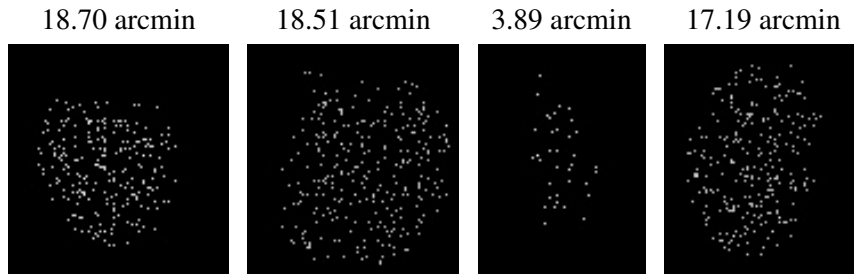
2.5.2 Slot 1



2.5.3 Slot 2



3 Point Sources



A Summary

A.1 Status

V&V Scientist	Jen Lauer
V&V Date (YYYY-MM-DD)	2006.10.19
V&V Edition	1
V&V Disposition and Status	OK
V&V Charge Time	4.06

A.2 Comments