

V&V Reference Report

L2 ASCDS Version : 7.6.8

Observation 4101 - L2 Version 001
Chandra X-Ray Center

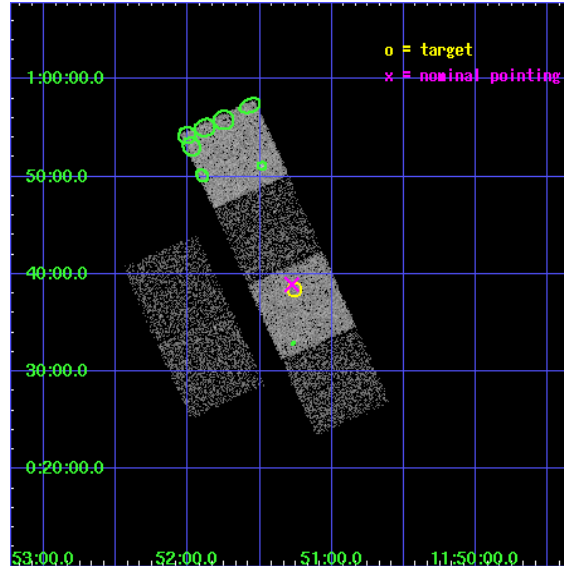
L2 Processing Date : Jul 22 2006

Contents

1	Front	2
2	OBI	3
2.1	OBI	3
2.1.1	Images	3
2.1.2	Bias	3
2.1.3	Parameters	4
2.1.4	Events	4
2.2	Compared Parameters	5
2.3	Aspect	6
2.4	Star Slots	9
2.4.1	Slot 3	9
2.4.2	Slot 4	10
2.4.3	Slot 5	11
2.4.4	Slot 6	12
2.4.5	Slot 7	13
2.5	FID Slots	14
2.5.1	Slot 0	14
2.5.2	Slot 1	15
2.5.3	Slot 2	16
3	Point Sources	17
A	Summary	18
A.1	Status	18
A.2	Comments	18

1 Front

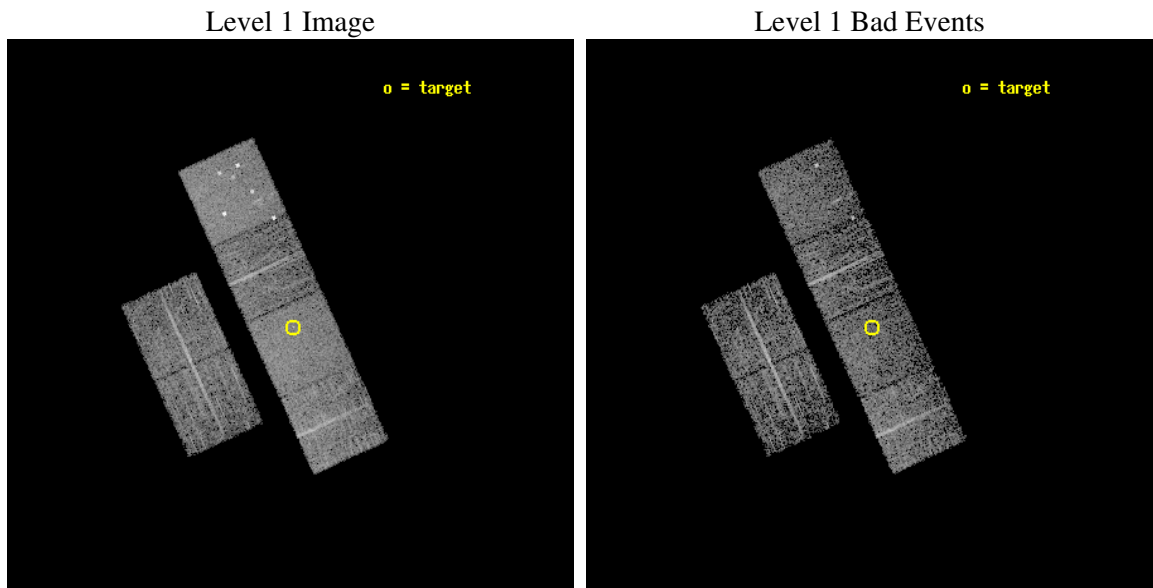
seq_num	700780
obs_id	4101
title	X-RAY CONSTRAINTS ON THE STRUCTURE OF THE BROAD EMISSION LINE REGION IN QUASARS
observer	Gordon Richards
object	SDSS J115115.38+003826.9
dtcycle	0
cycle	P
ra_targ	177.814167
dec_targ	0.640806
ra_nom	177.81957567673
dec_nom	0.64877251680321
roll_nom	65.534684470442
revision	2
ontime	3734.3999860883
livetime	3687.1127648787
ontime2	3734.3999860883
ontime3	3734.3999860883
ontime5	3734.3999860883
ontime6	3734.3999860883
ontime7	3734.3999860883
ontime8	3731.1590057909
l2events	36397



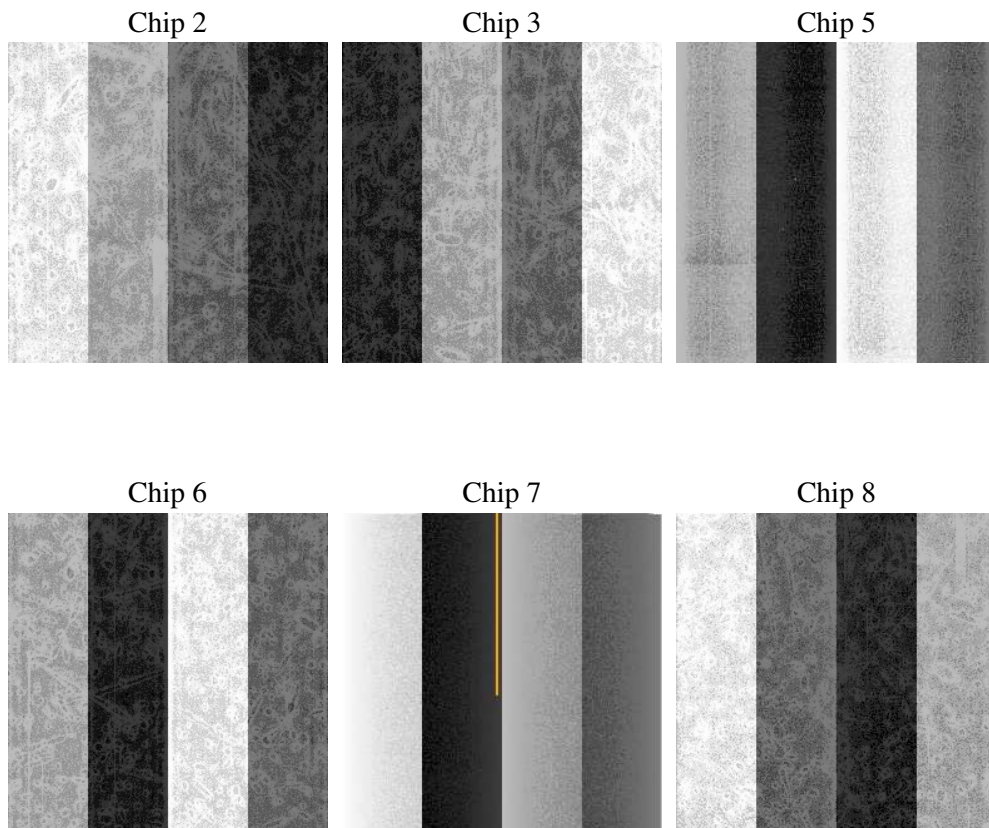
2 OBI

2.1 OBI

2.1.1 Images



2.1.2 Bias



2.1.3 Parameters

obi_num	0
ascdsver	7.6.8
caldsver	3.2.2
date	2006-07-22T10:34:29
revision	2

sched_exp_time	3980.000000
ontime	3740.123357147
ontime2	3740.123357147
ontime3	3740.1233770251
ontime5	3740.123357147
ontime6	3740.1233770251
ontime7	3740.123357147
ontime8	3736.882297188
l1events	174079

2.1.4 Events

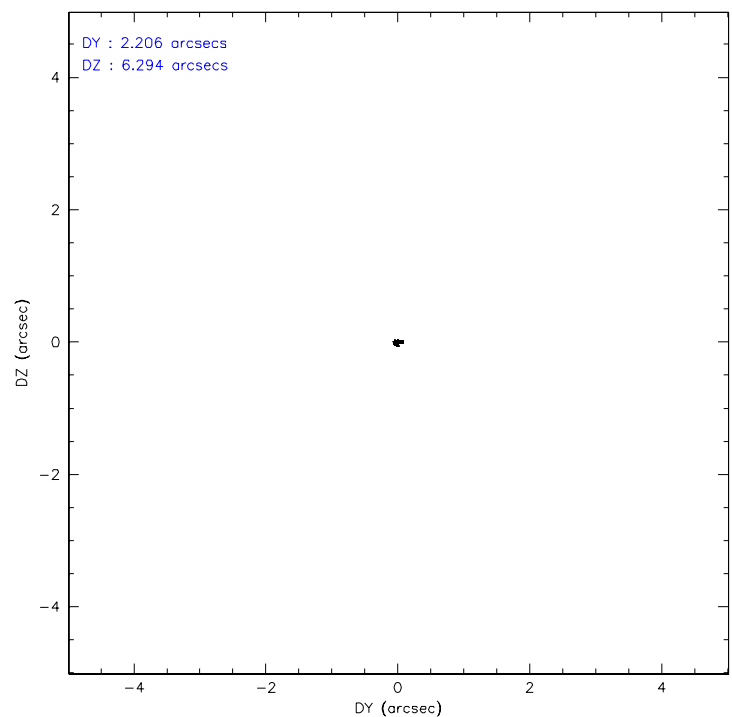
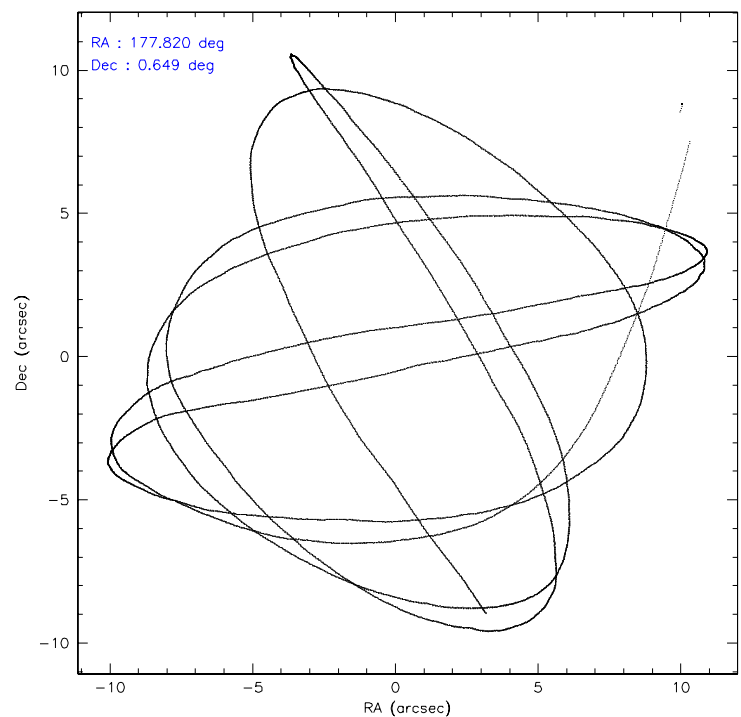
	ccd 2	ccd 3	ccd 5	ccd 6	ccd 7	ccd 8
level 1 events	24179	23229	38306	24193	32071	32101
rejected events	21554	20412	20251	21371	19653	26131
rejected %	89%	87%	52%	88%	61%	81%

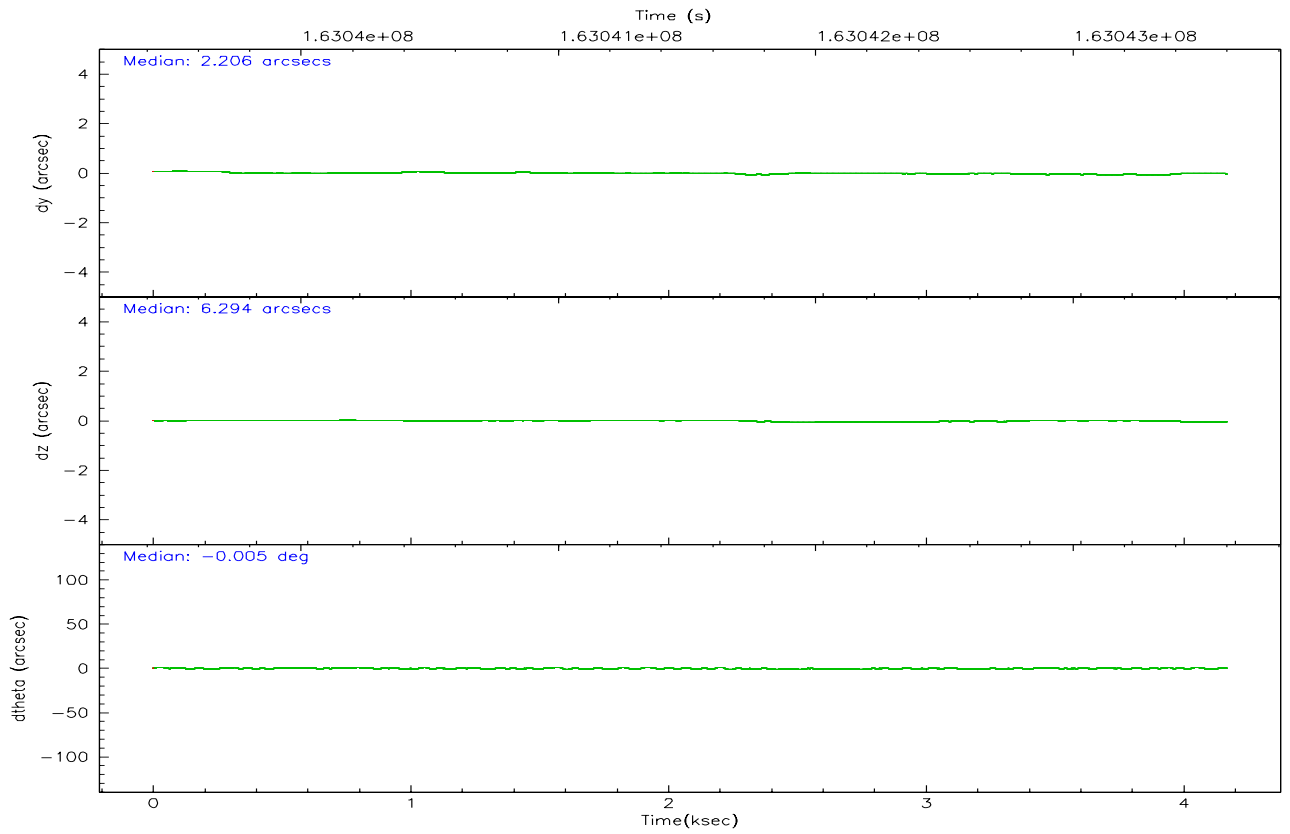
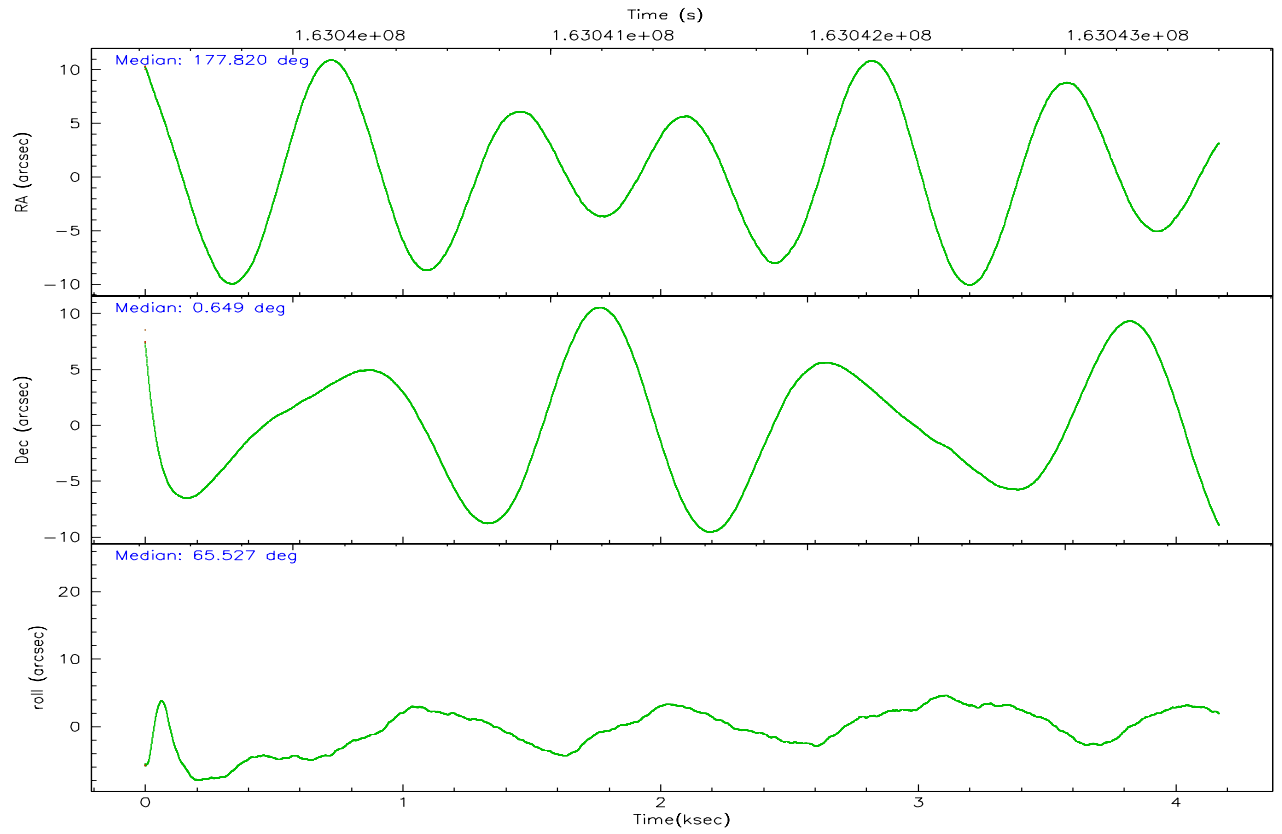
	ccd 2	ccd 3	ccd 5	ccd 6	ccd 7	ccd 8
grade 0 events	1185	1216	2627	1112	782	1841
	4%	5%	6%	4%	2%	5%
grade 1 events	17	17	106	13	11	27
	0%	0%	0%	0%	0%	0%
grade 2 events	540	528	5458	607	3068	1241
	2%	2%	14%	2%	9%	3%
grade 3 events	246	274	447	261	635	623
	1%	1%	1%	1%	1%	1%
grade 4 events	253	282	436	264	610	604
	1%	1%	1%	1%	1%	1%
grade 5 events	933	1031	1876	1075	2102	1325
	3%	4%	4%	4%	6%	4%
grade 6 events	405	518	9104	580	7340	1663
	1%	2%	23%	2%	22%	5%
grade 7 events	20600	19363	18252	20281	17523	24777
	85%	83%	47%	83%	54%	77%

2.2 Compared Parameters

Parameter	Planned	Actual	Parameter	Planned	Actual
Instrument	ACIS	ACIS	Obspar format version number	6	6
Detector	ACIS-235678	ACIS-235678	Obspar file type	PREDICTED	ACTUAL
Grating	NONE	NONE	Obspar update status	NONE	UPDATED
Data mode	FAINT	FAINT	On-chip summing requested	N	N
Observation mode	POINTING	POINTING	Subarray requested	NONE	NONE
Pointing RA	177.822648	177.8195756767267	Alternating exposures requested	N	N
Pointing Dec	0.621704	0.648772516803209	Primary exposure time	0.000000	3.2
Pointing Roll	65.378023	65.53468447044155			
SIM focus pos (mm)	-0.684267	-0.6828225247311905			
SIM defocus (mm)	0	0.001444936568705701			
SIM translation stage pos (mm)	-190.132523	-190.1425803651734			
SIM translation stage offset (mm)	0	0.01005778216563158			
Observation start time	163039614.184000	163038360.25086			
Observation start date	2003-03-03T00:45:50	2003-03-03T00:26:00			
Observation end time	163043594.184000	163044379.05112			
Observation end date	2003-03-03T01:52:10	2003-03-03T02:06:19			
Read mode	TIMED	TIMED			

2.3 Aspect



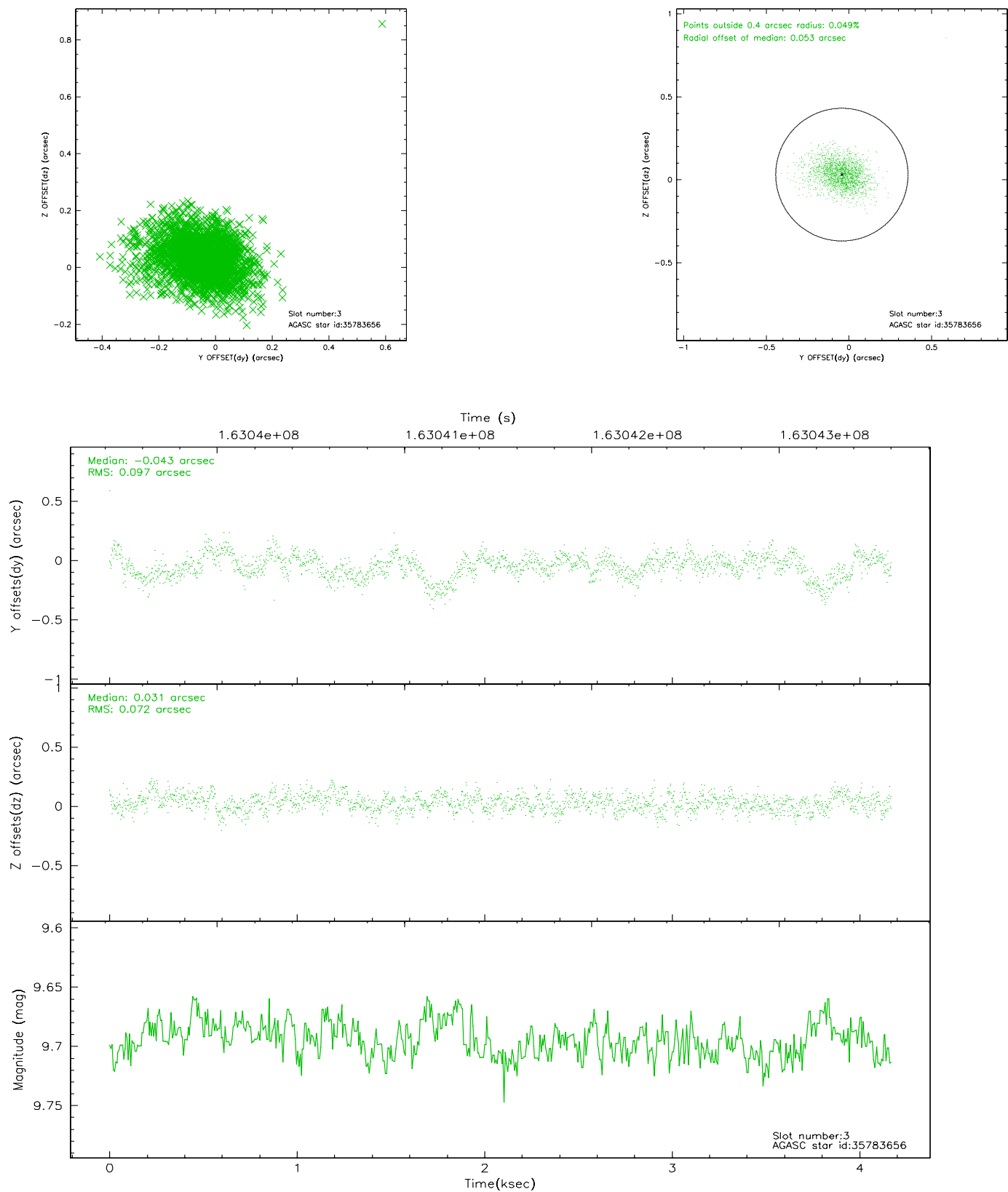


Slot Statistics

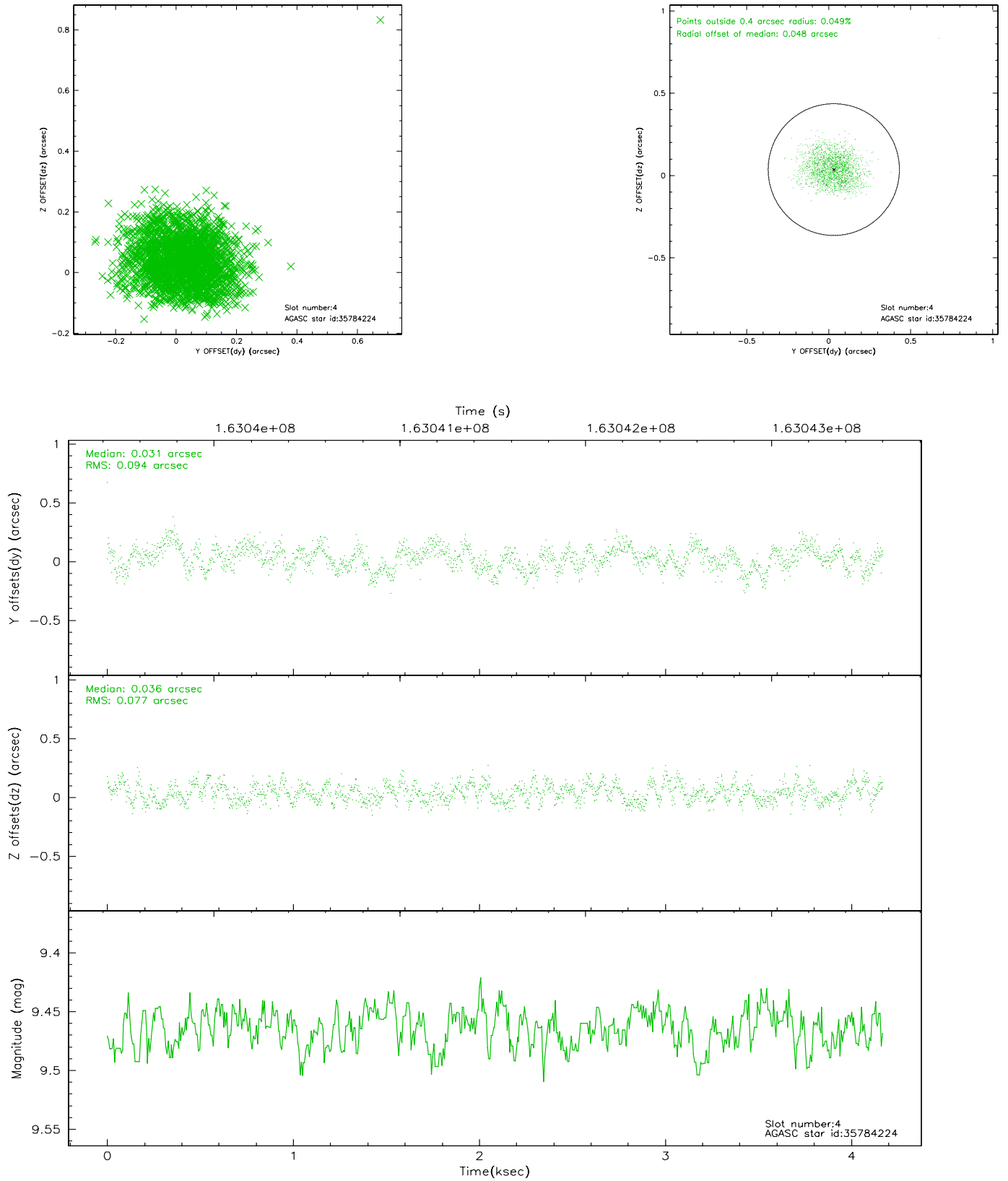
slot	status	id	mag	n_pts	med_dy	med_dz	dr1	dr2	ra	dec	mean_y	mean_z
0	FID	ACIS-S-2	7.12	1018	-0.038	0.028	0.007	0.011	0.000000	0.000000	-754.82	-1727.37
1	FID	ACIS-S-4	7.21	1017	-0.041	0.011	0.005	0.010	0.000000	0.000000	2157.74	179.62
2	FID	ACIS-S-5	7.24	1018	0.048	-0.030	0.006	0.010	0.000000	0.000000	-1805.70	174.86
3	GUIDE	35783656	9.69	2034	-0.043	0.031	0.122	0.213	178.538116	0.980270	2247.27	-1803.14
4	GUIDE	35784224	9.46	2034	0.031	0.036	0.129	0.204	178.398190	1.076869	2354.63	-1201.08
5	GUIDE	35785968	9.98	2034	0.108	-0.004	0.108	0.173	178.064100	0.247272	-861.33	-1352.59
6	GUIDE	35787624	6.67	2035	-0.081	0.074	0.069	0.115	178.459489	0.552116	727.73	-2188.91
7	GUIDE	35788008	9.41	2034	-0.004	-0.142	0.104	0.165	177.612047	1.006805	945.15	1265.52

2.4 Star Slots

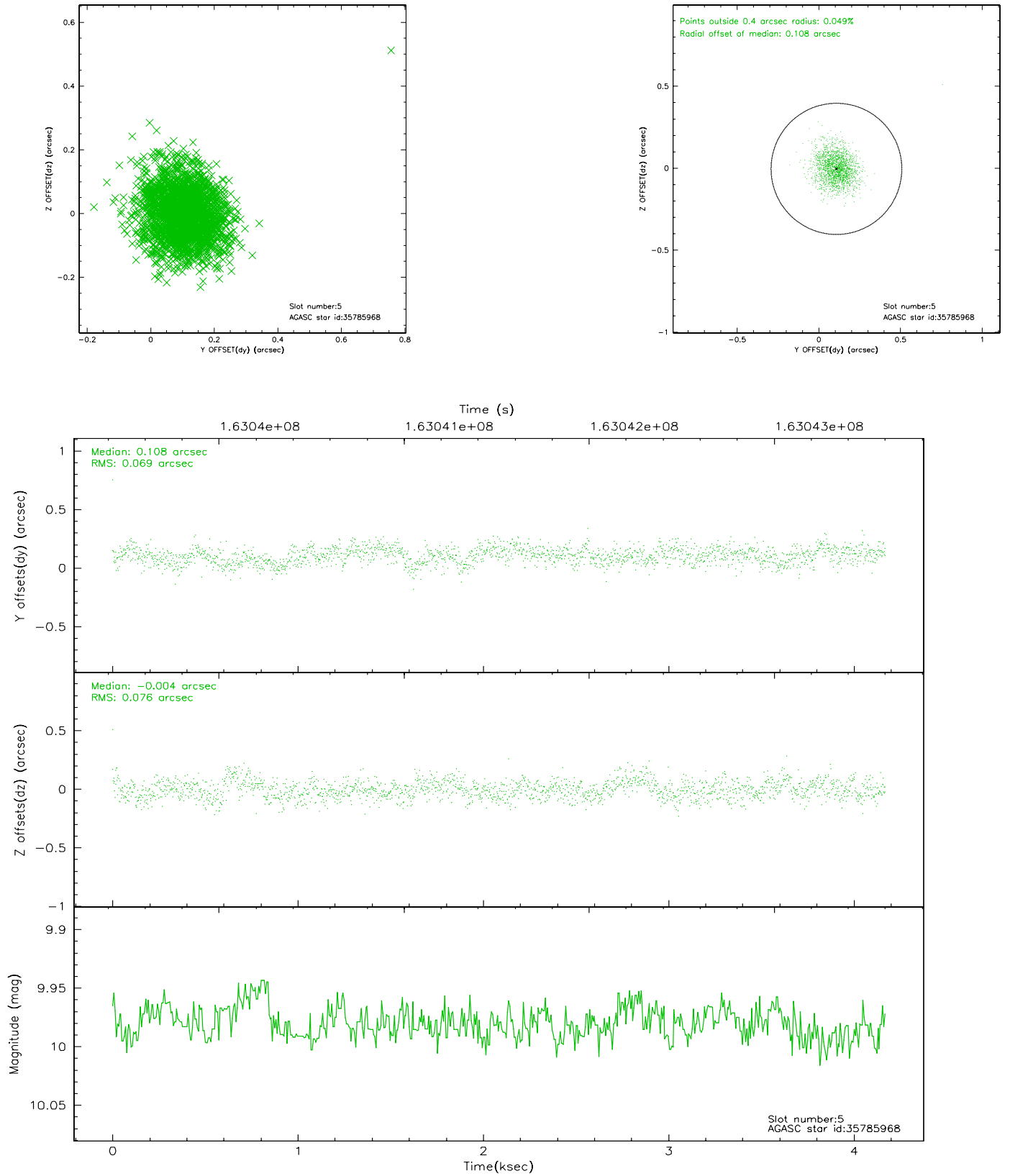
2.4.1 Slot 3



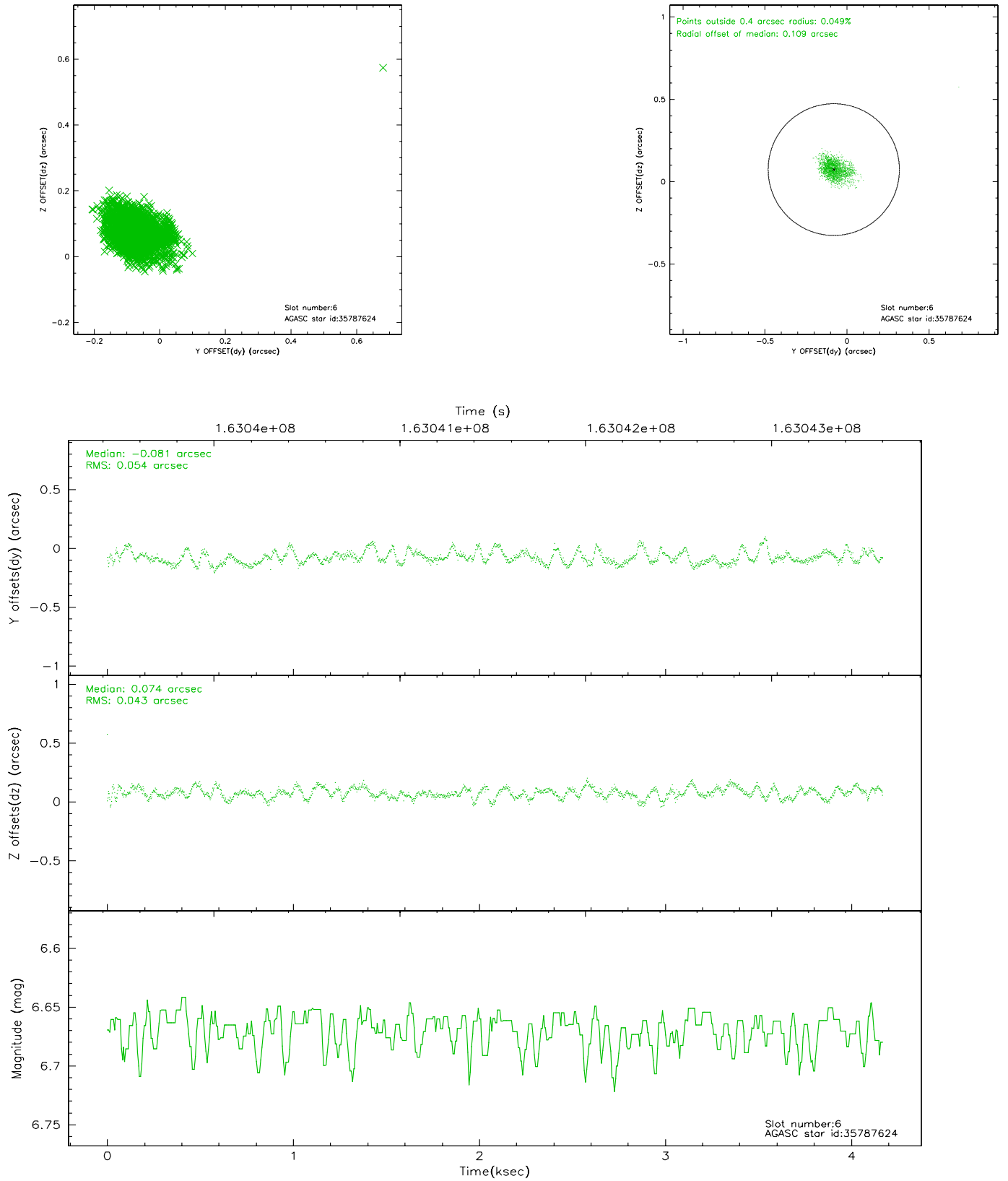
2.4.2 Slot 4



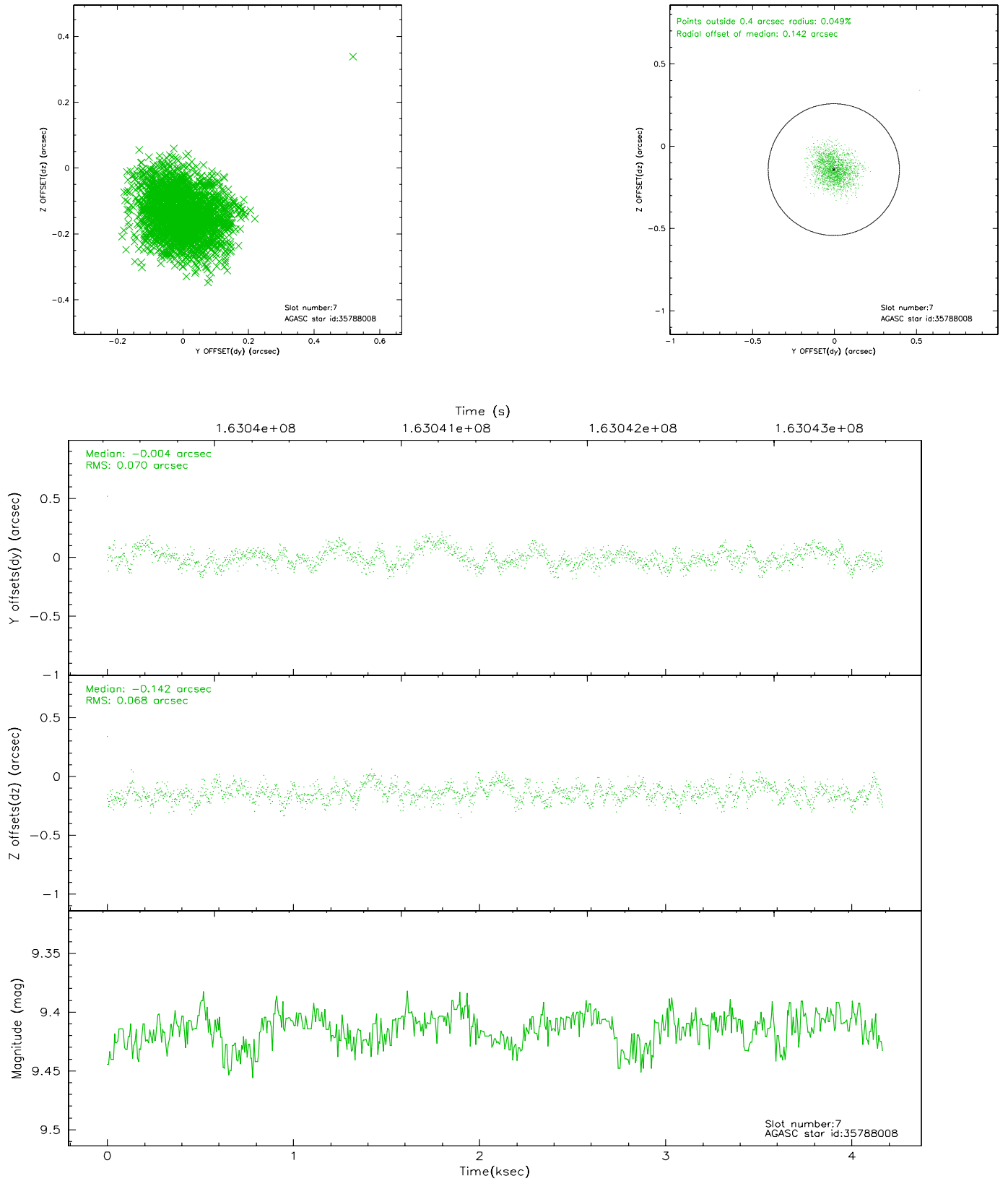
2.4.3 Slot 5



2.4.4 Slot 6

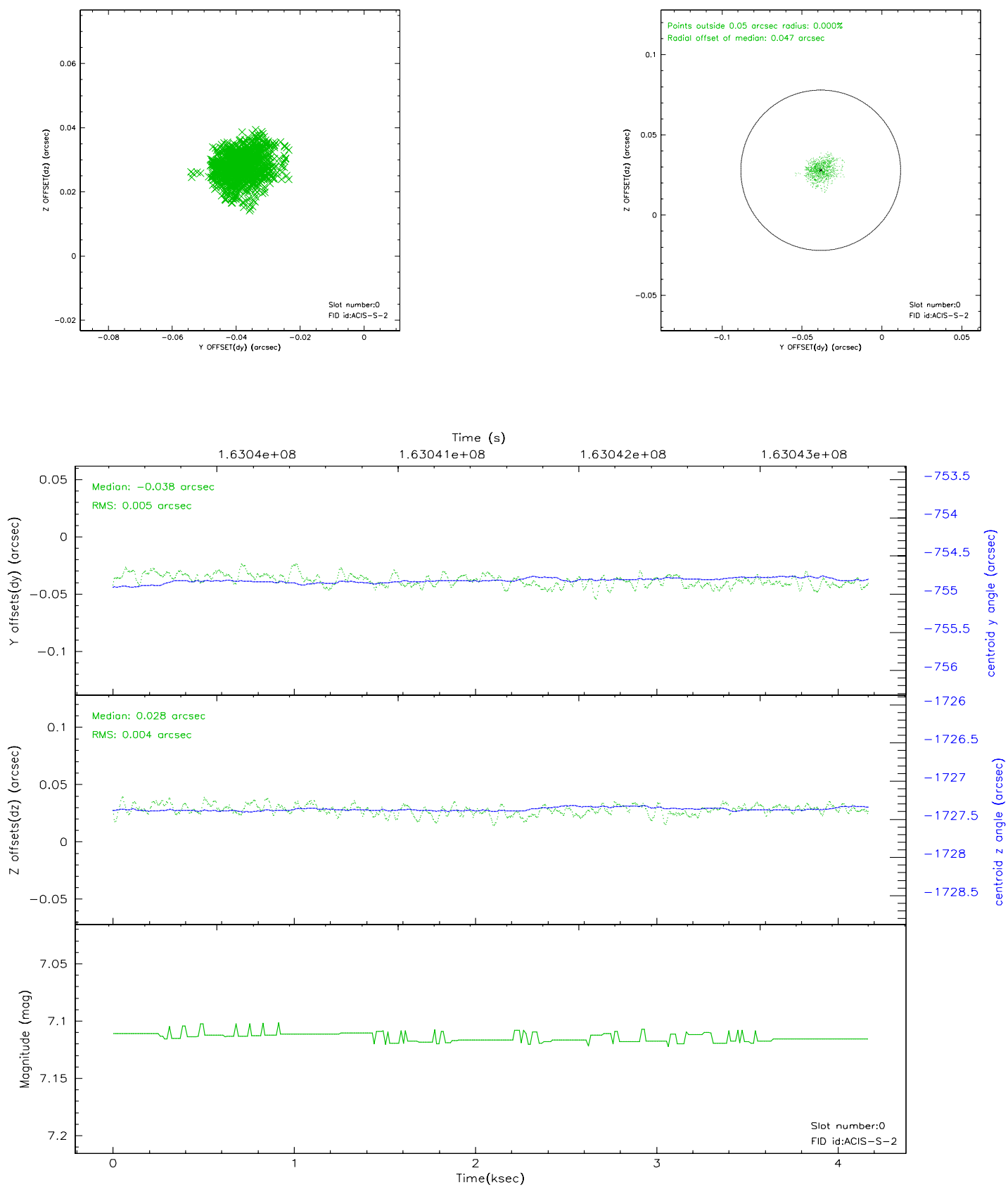


2.4.5 Slot 7

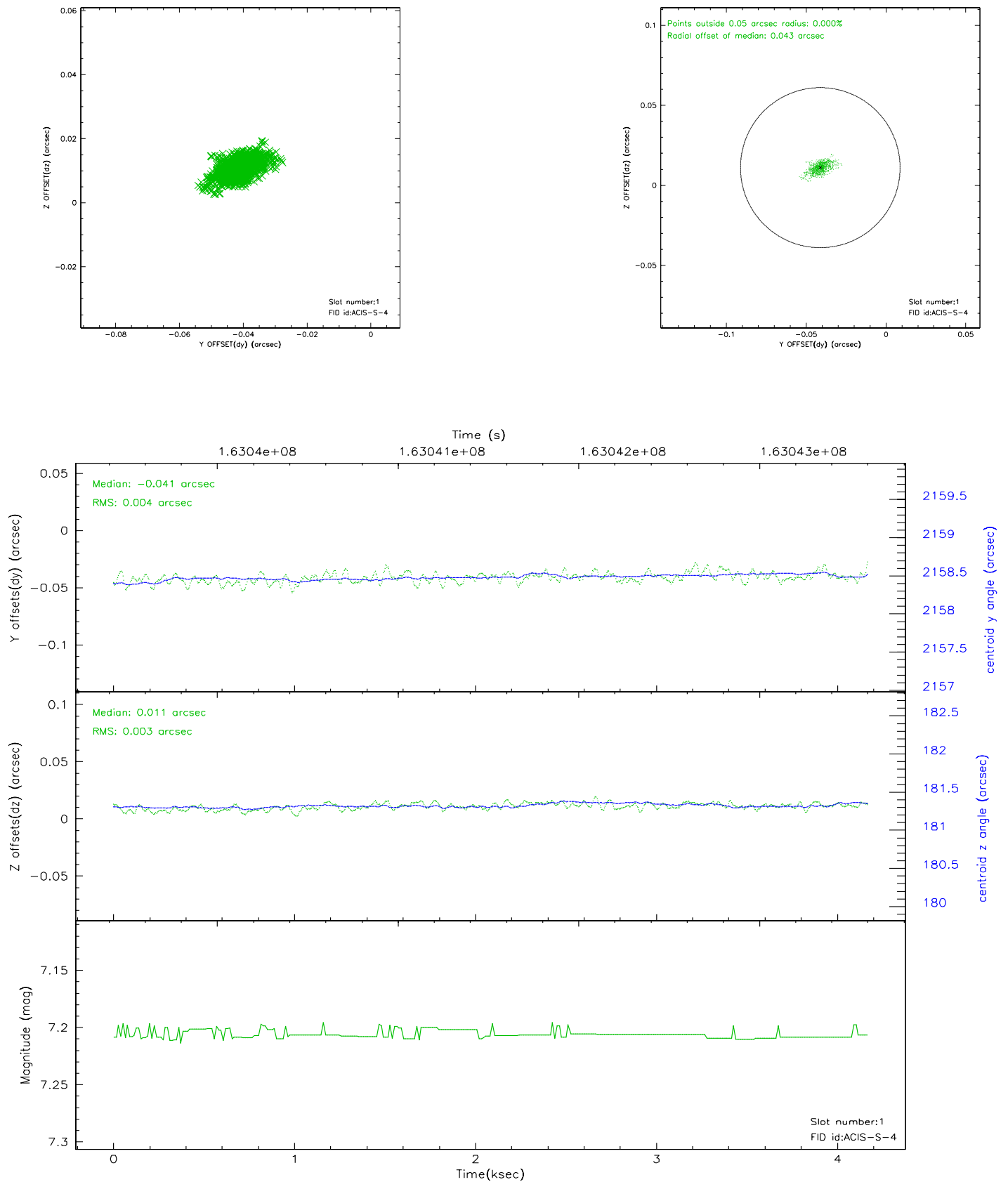


2.5 FID Slots

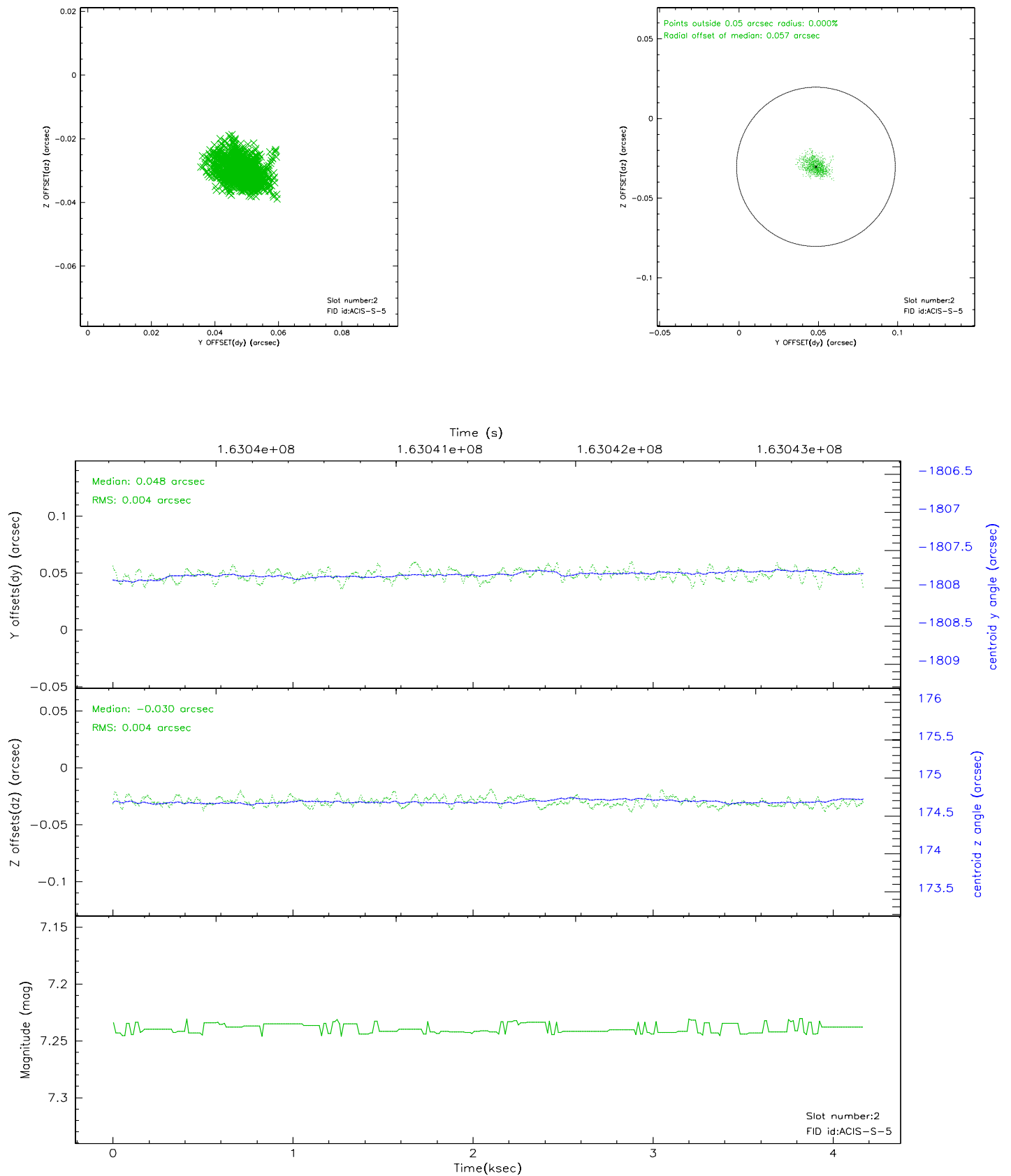
2.5.1 Slot 0



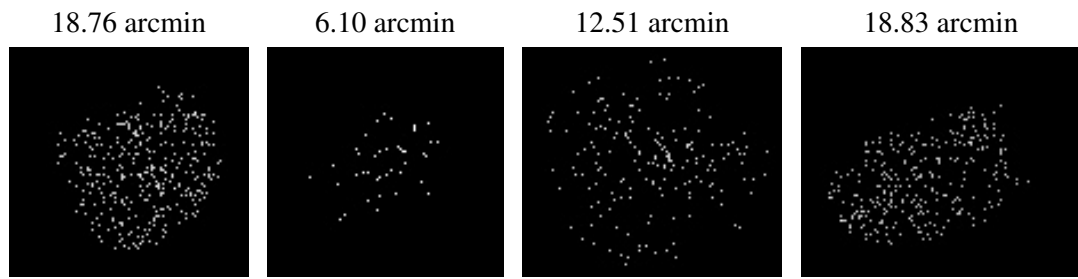
2.5.2 Slot 1



2.5.3 Slot 2



3 Point Sources



A Summary

A.1 Status

V&V Scientist	Beth Sundheim
V&V Date (YYYY-MM-DD)	2006.07.23
V&V Edition	1
V&V Disposition and Status	OK
V&V Charge Time	3.734

A.2 Comments