

# V&V Reference Report

## L2 ASCDS Version : 7.6.8

Observation 4088 - L2 Version 001  
Chandra X-Ray Center

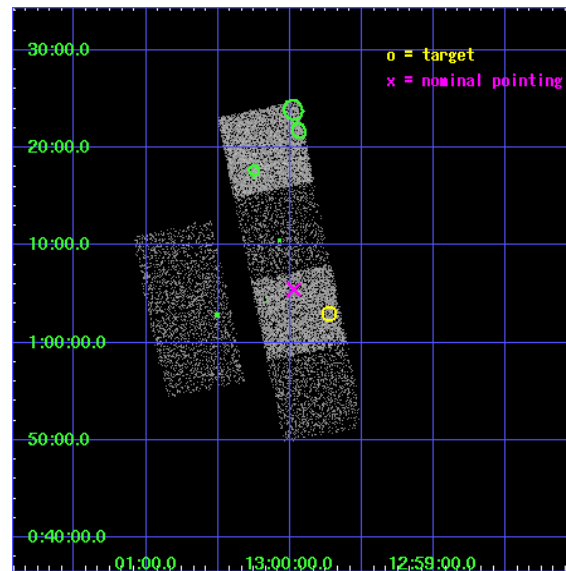
L2 Processing Date : Jul 22 2006

## Contents

<b>1</b>	<b>Front</b>	<b>2</b>
<b>2</b>	<b>OBI</b>	<b>3</b>
2.1	OBI . . . . .	3
2.1.1	Images . . . . .	3
2.1.2	Bias . . . . .	3
2.1.3	Parameters . . . . .	4
2.1.4	Events . . . . .	4
2.2	Compared Parameters . . . . .	5
2.3	Aspect . . . . .	6
2.4	Star Slots . . . . .	9
2.4.1	Slot 3 . . . . .	9
2.4.2	Slot 4 . . . . .	10
2.4.3	Slot 5 . . . . .	11
2.4.4	Slot 6 . . . . .	12
2.4.5	Slot 7 . . . . .	13
2.5	FID Slots . . . . .	14
2.5.1	Slot 0 . . . . .	14
2.5.2	Slot 1 . . . . .	15
2.5.3	Slot 2 . . . . .	16
<b>3</b>	<b>Point Sources</b>	<b>17</b>
<b>A</b>	<b>Summary</b>	<b>18</b>
A.1	Status . . . . .	18
A.2	Comments . . . . .	18

# 1 Front

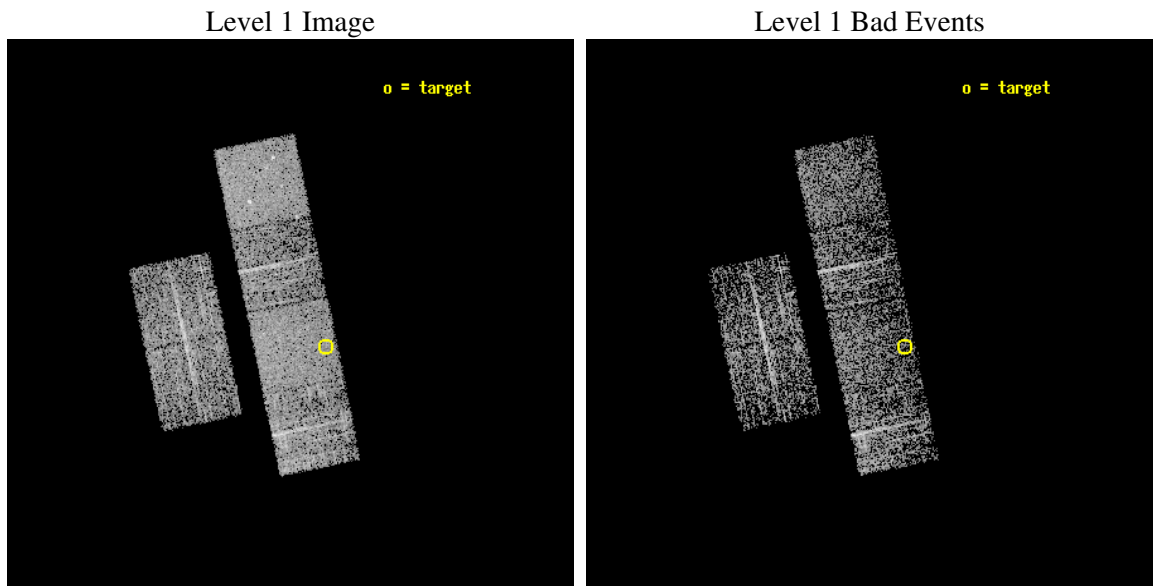
seq_num	700767
obs_id	4088
title	ARE ALL NARROW-LINE SEYFERT 1S ULTRASOFT X-RAY SOURCES?
observer	Prof RICHARD POGGE
object	SDSS J125943.59+010255.1
dtcycle	0
cycle	P
ra_targ	194.931667
dec_targ	1.048639
ra_nom	194.99321571878
dec_nom	1.090871149178
roll_nom	78.273170139562
revision	2
ontime	1958.3999927044
livetime	1933.6015527899
ontime2	1958.3999927044
ontime3	1958.3999927044
ontime5	1958.3999927044
ontime6	1958.3999927044
ontime7	1958.3999927044
ontime8	1958.3999927044
l2events	19316



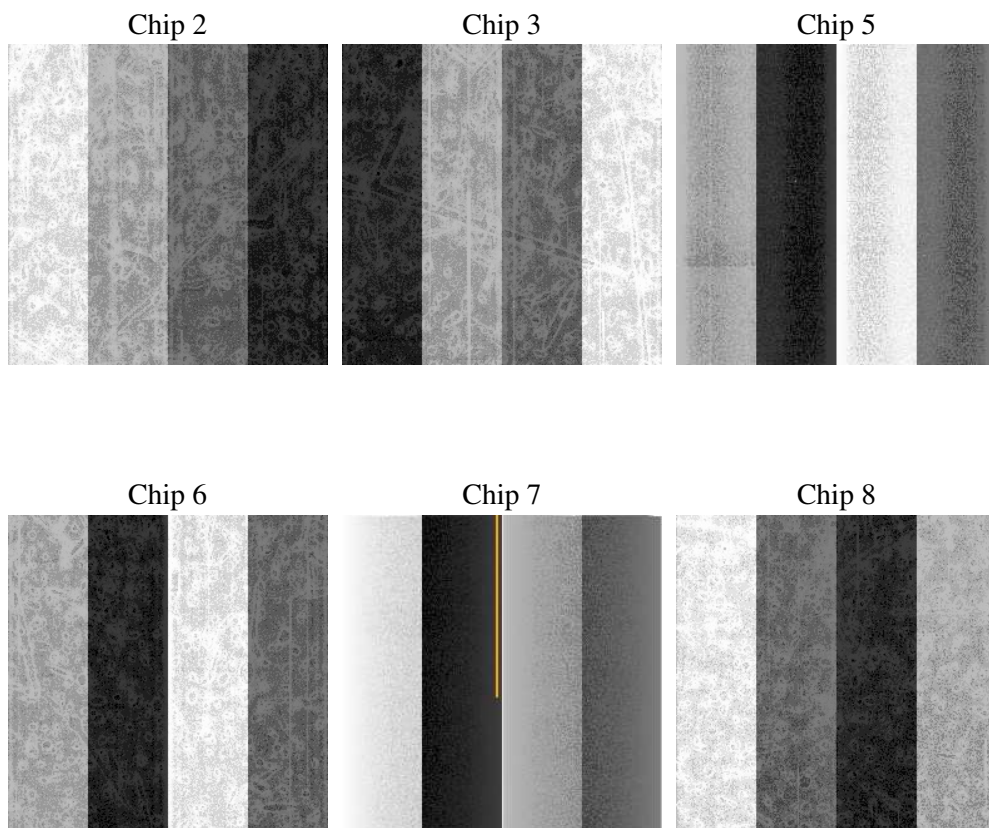
## 2 OBI

### 2.1 OBI

#### 2.1.1 Images



#### 2.1.2 Bias



### 2.1.3 Parameters

obi_num	1
ascdsver	7.6.8
caldsver	3.2.2
date	2006-07-22T10:42:20
revision	2

sched_exp_time	2000.000000
ontime	1964.0516327322
ontime2	1964.0516327322
ontime3	1964.0516327322
ontime5	1964.0516327322
ontime6	1964.0516327322
ontime7	1964.0516327322
ontime8	1964.0516327322
l1events	89051

### 2.1.4 Events

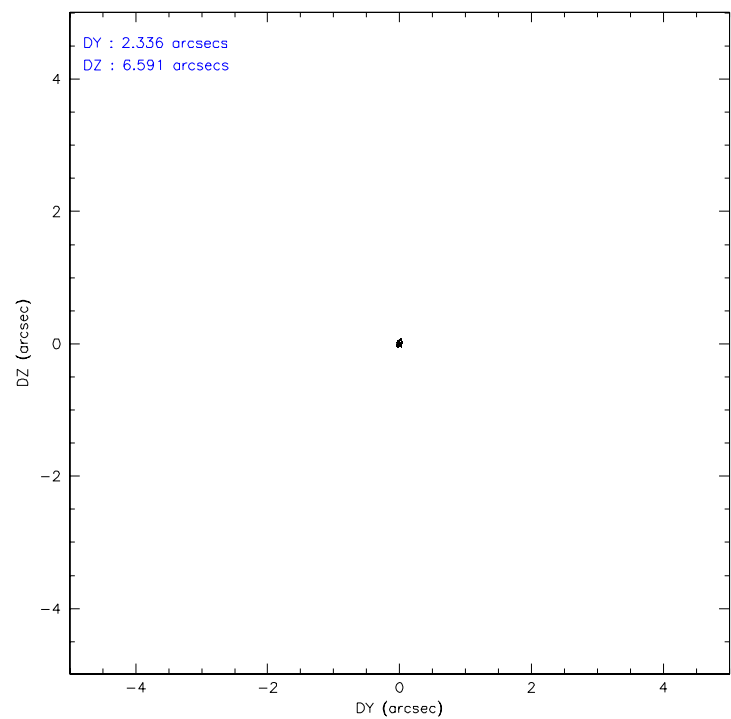
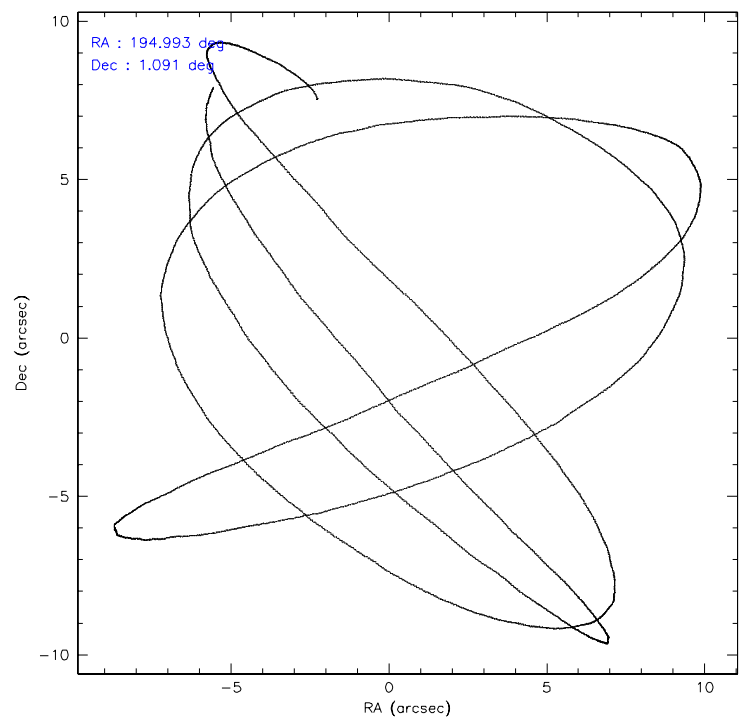
	ccd 2	ccd 3	ccd 5	ccd 6	ccd 7	ccd 8
level 1 events	13029	12297	18478	12564	16447	16236
rejected events	11440	10810	10168	11016	10130	12876
rejected %	87%	87%	55%	87%	61%	79%

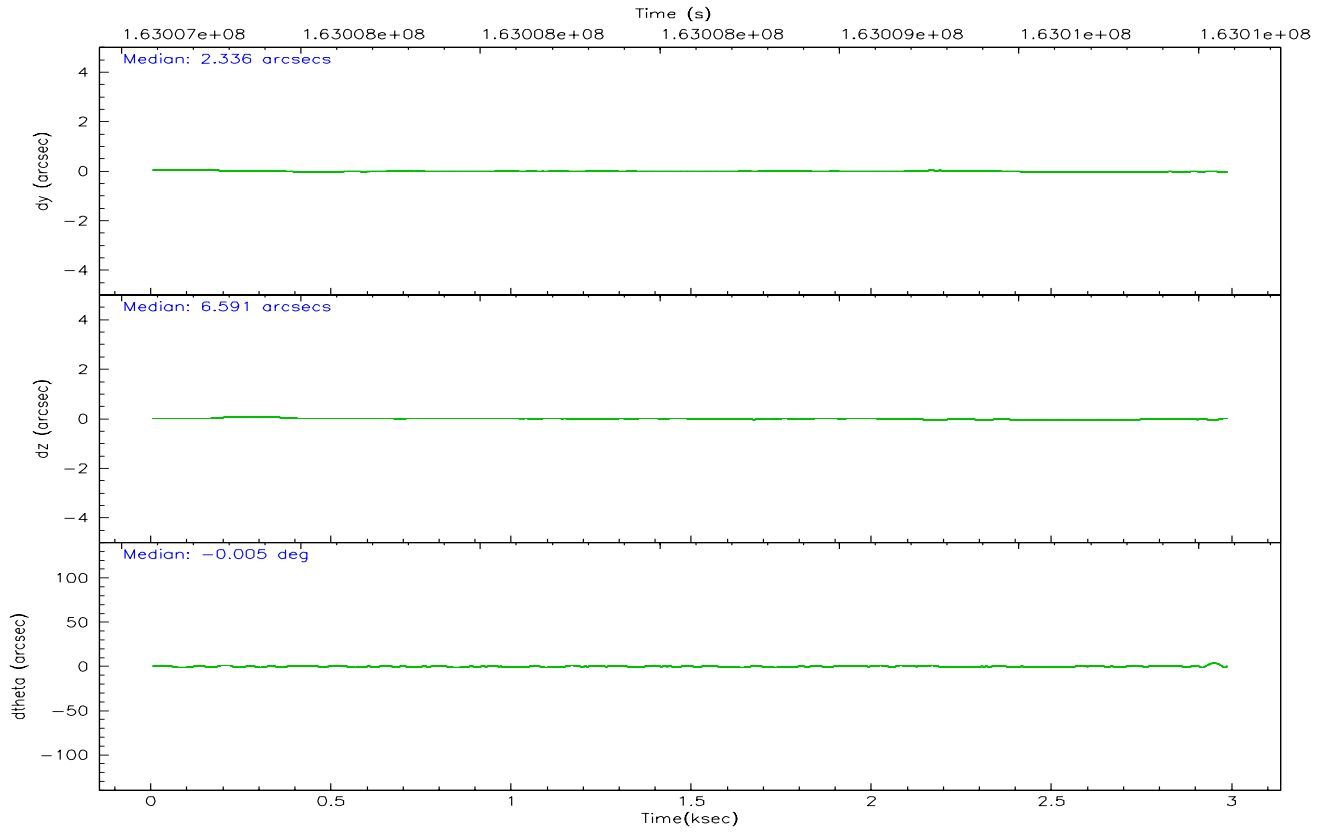
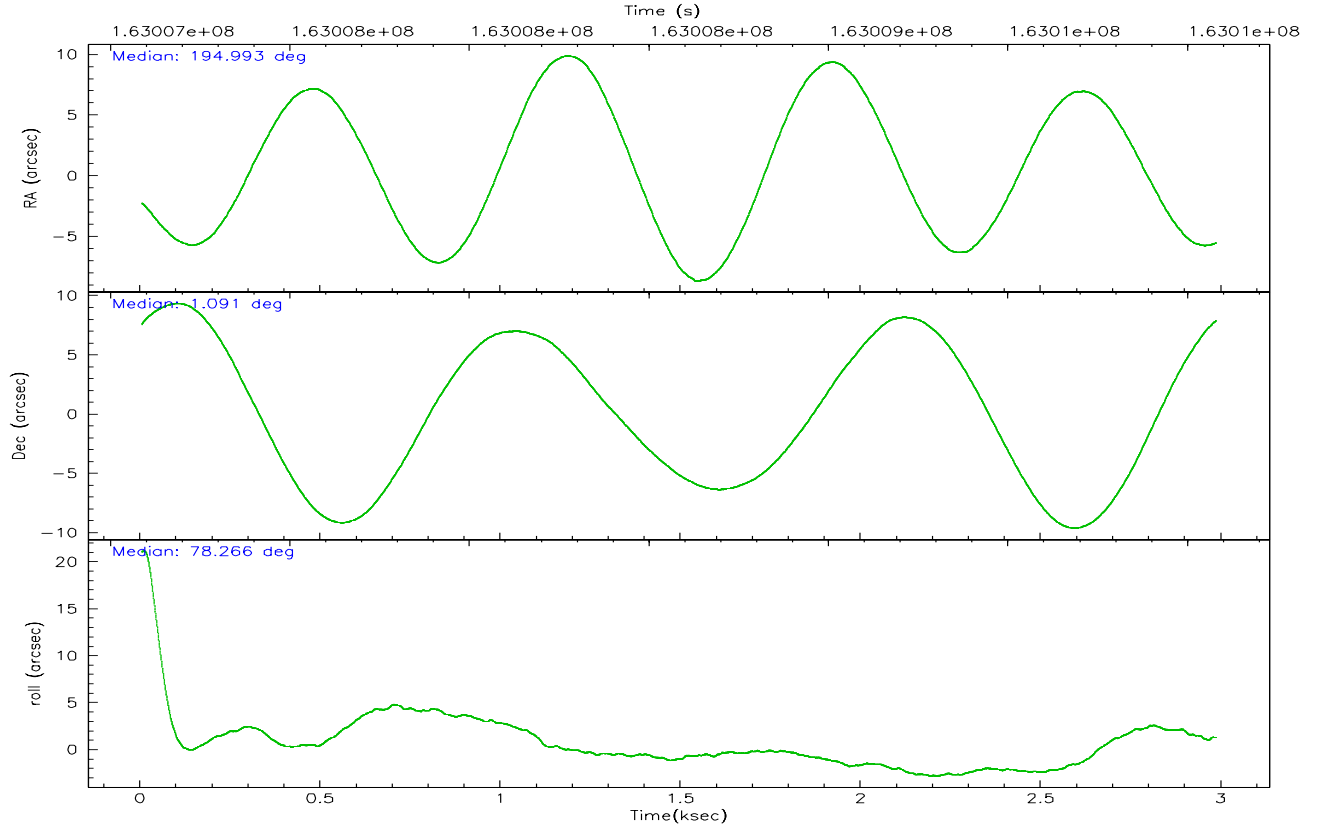
	ccd 2	ccd 3	ccd 5	ccd 6	ccd 7	ccd 8
grade 0 events	769	718	744	631	377	1087
	5%	5%	4%	5%	2%	6%
grade 1 events	11	8	26	4	15	9
	0%	0%	0%	0%	0%	0%
grade 2 events	295	262	2595	328	1553	769
	2%	2%	14%	2%	9%	4%
grade 3 events	146	145	195	156	350	387
	1%	1%	1%	1%	2%	2%
grade 4 events	120	157	168	160	264	320
	0%	1%	0%	1%	1%	1%
grade 5 events	539	555	904	563	1072	746
	4%	4%	4%	4%	6%	4%
grade 6 events	264	208	4626	282	3788	802
	2%	1%	25%	2%	23%	4%
grade 7 events	10885	10244	9220	10440	9028	12116
	83%	83%	49%	83%	54%	74%

## 2.2 Compared Parameters

Parameter	Planned	Actual	Parameter	Planned	Actual
Instrument	ACIS	ACIS	Obspar format version number	6	6
Detector	ACIS-235678	ACIS-235678	Obspar file type	PREDICTED	ACTUAL
Grating	NONE	NONE	Obspar update status	NONE	UPDATED
Data mode	FAINT	FAINT	On-chip summing requested	N	N
Observation mode	POINTING	POINTING	Subarray requested	NONE	NONE
Pointing RA	195.002254	194.9932157187843	Alternating exposures requested	N	N
Pointing Dec	1.065134	1.090871149177993	Primary exposure time	0.000000	3.2
Pointing Roll	78.116363	78.27317013956217			
SIM focus pos (mm)	-0.684267	-0.6828225247311905			
SIM defocus (mm)	0	0.001444936568705701			
SIM translation stage pos (mm)	-190.132523	-190.1425803651734			
SIM translation stage offset (mm)	0	0.01005778216563158			
Observation start time	163008077.184000	163006717.98703			
Observation start date	2003-03-02T16:00:13	2003-03-02T15:38:37			
Observation end time	163010077.184000	163010276.27468			
Observation end date	2003-03-02T16:33:33	2003-03-02T16:37:56			
Read mode	TIMED	TIMED			

### 2.3 Aspect





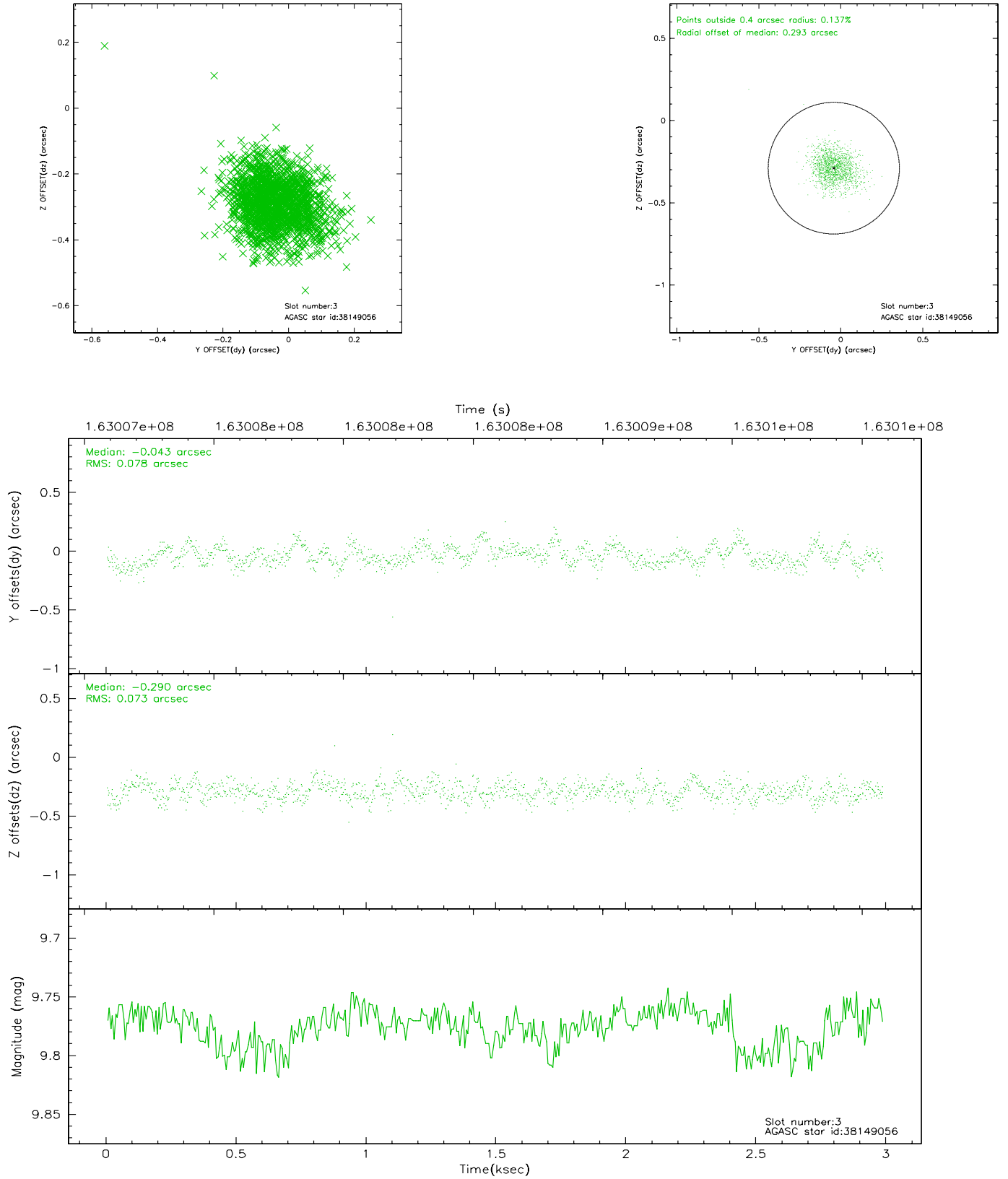
### Slot Statistics

slot	status	id	mag	n_pts	med_dy	med_dz	dr1	dr2	ra	dec	mean_y	mean_z
0	FID	ACIS-S-2	7.11	728	-0.000	0.017	0.005	0.010	0.000000	0.000000	-754.94	-1727.69
1	FID	ACIS-S-4	7.21	728	-0.025	0.009	0.006	0.009	0.000000	0.000000	2157.33	178.61
2	FID	ACIS-S-6	7.36	728	-0.002	-0.018	0.007	0.011	0.000000	0.000000	409.78	818.40
3	GUIDE	38149056	9.78	1455	-0.043	-0.290	0.112	0.184	194.359026	1.178810	-76.06	2349.06
4	GUIDE	38151240	10.36	1455	-0.007	-0.056	0.170	0.273	194.961235	1.267328	682.05	295.61
5	GUIDE	38151376	10.15	1456	0.011	-0.054	0.140	0.232	194.629344	1.133191	-36.00	1363.60
6	GUIDE	39064944	8.02	1456	0.064	0.192	0.073	0.118	195.513486	0.405733	-1943.32	-2289.46
7	GUIDE	39065216	8.37	1452	-0.035	0.223	0.065	0.102	195.117040	1.247762	727.38	-270.74

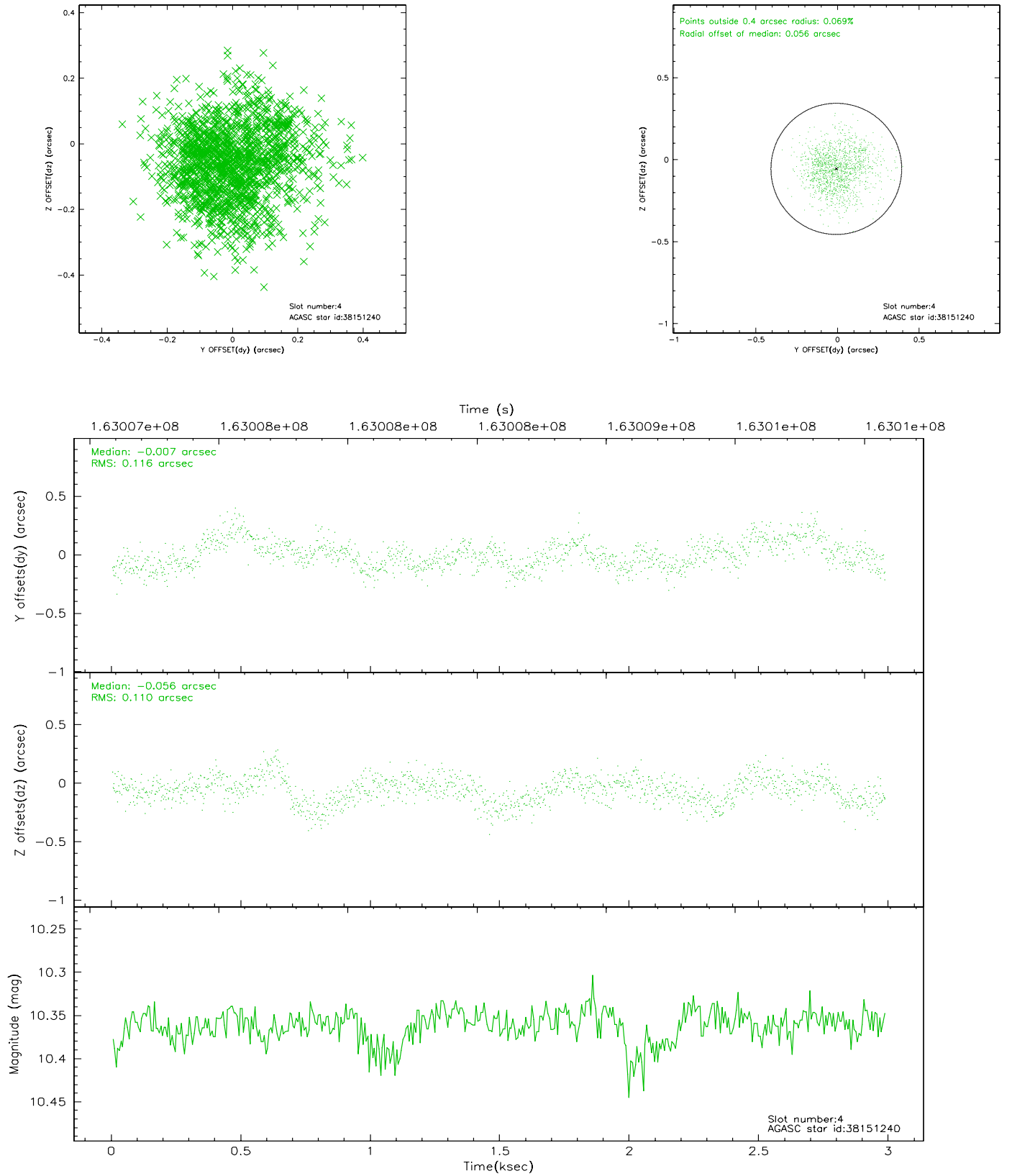


## 2.4 Star Slots

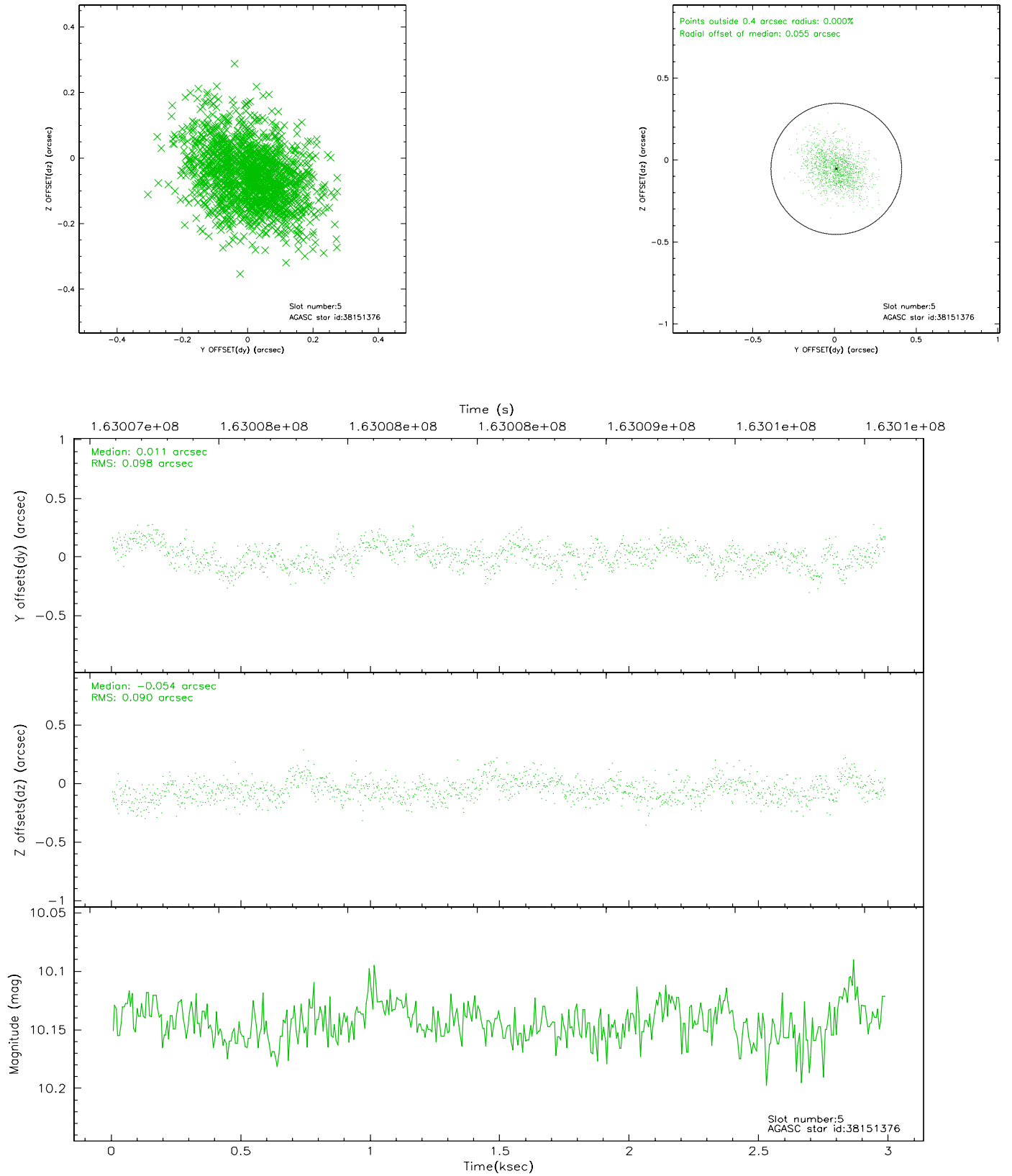
### 2.4.1 Slot 3



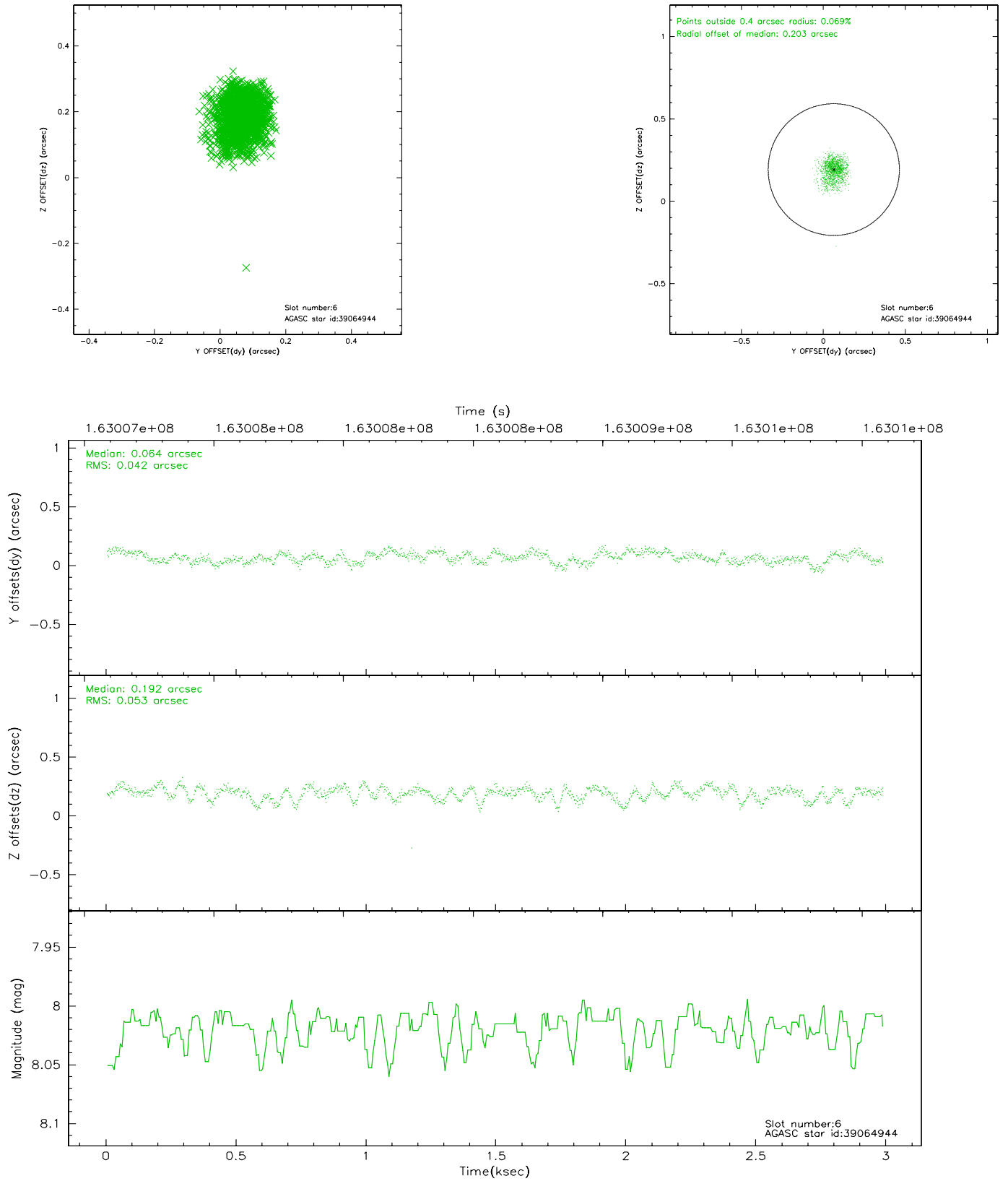
## 2.4.2 Slot 4



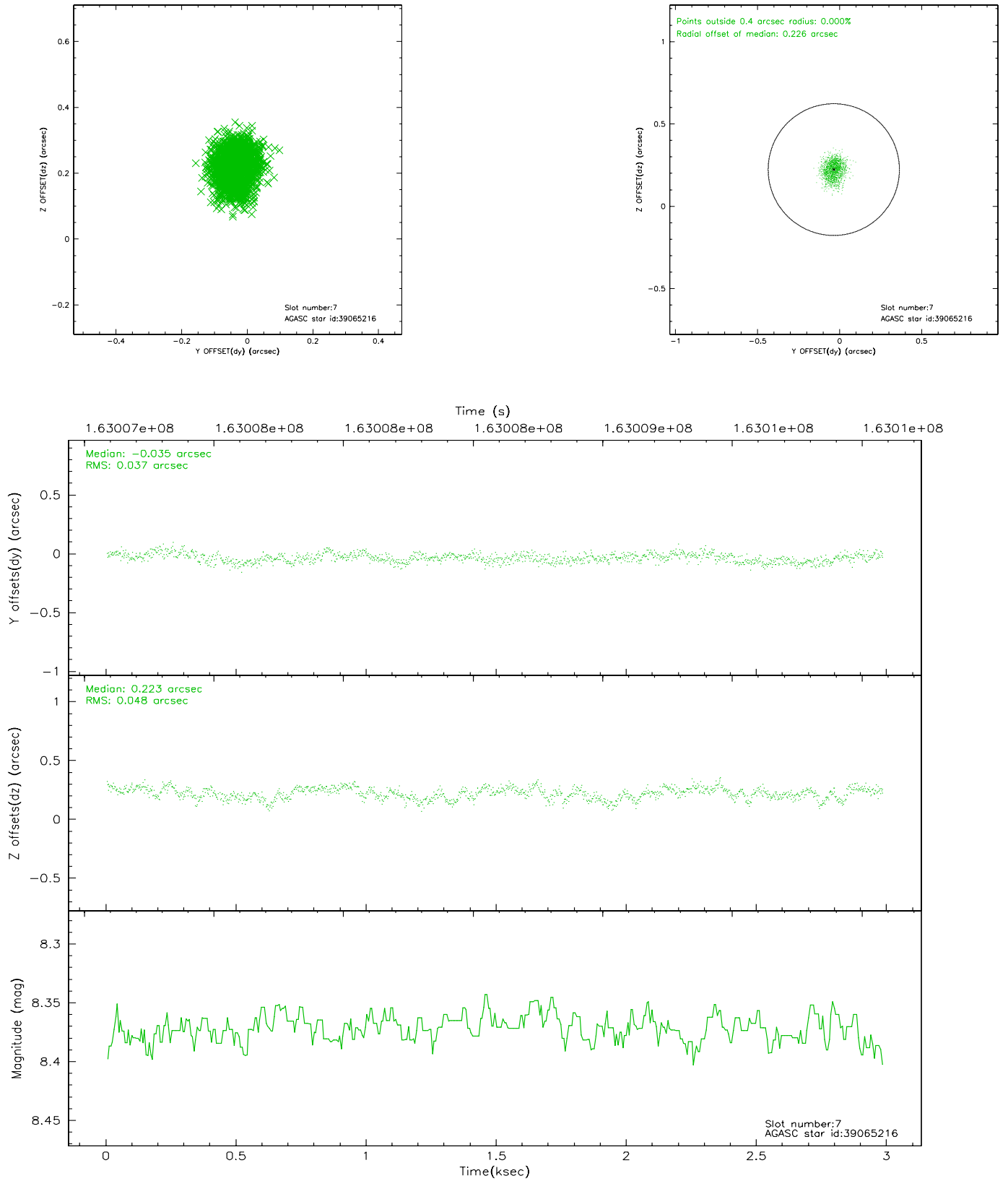
### 2.4.3 Slot 5



## 2.4.4 Slot 6

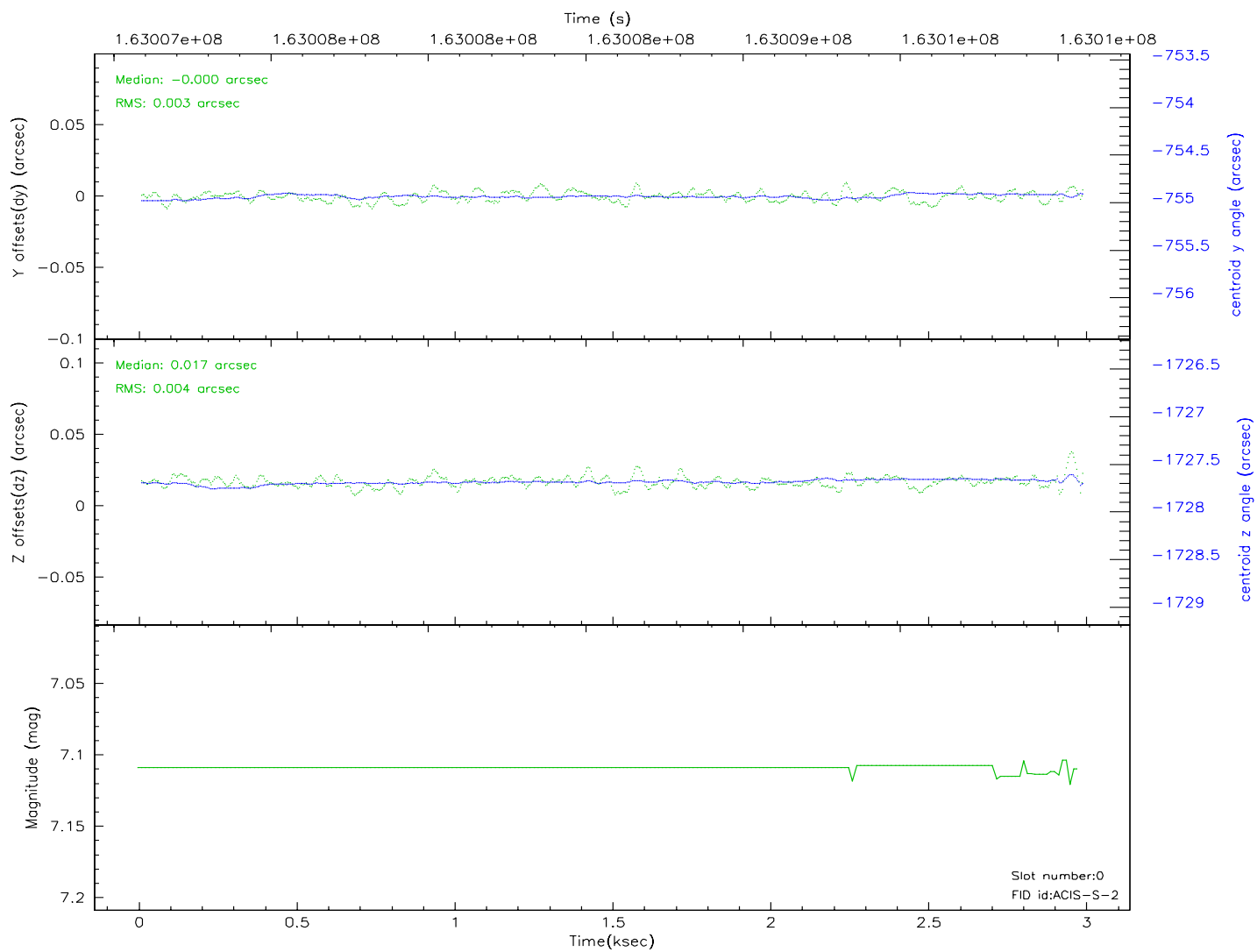
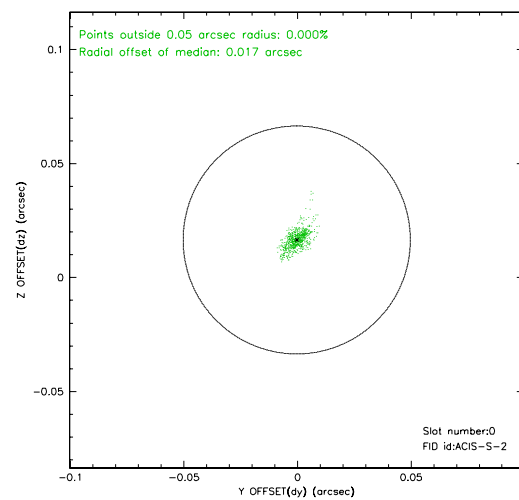
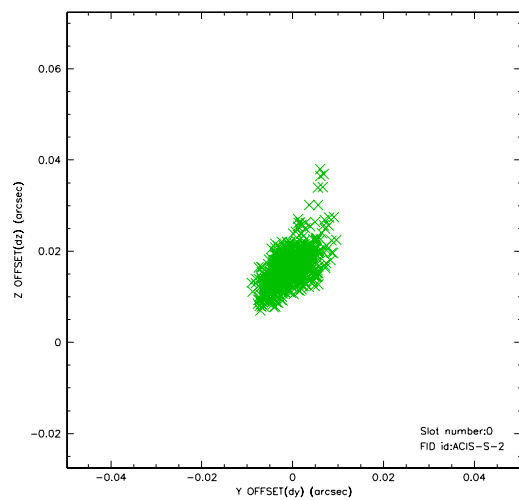


## 2.4.5 Slot 7

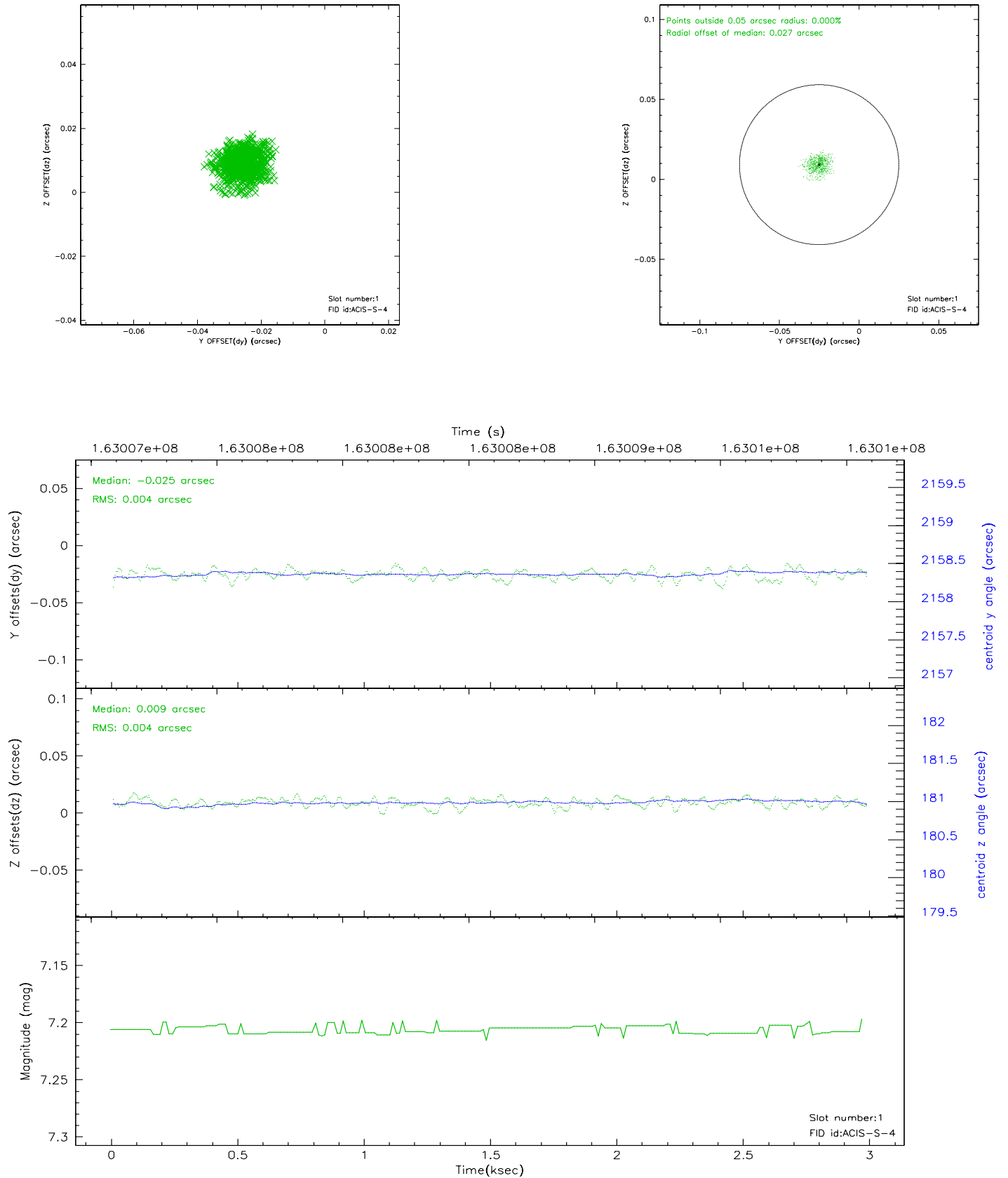


## 2.5 FID Slots

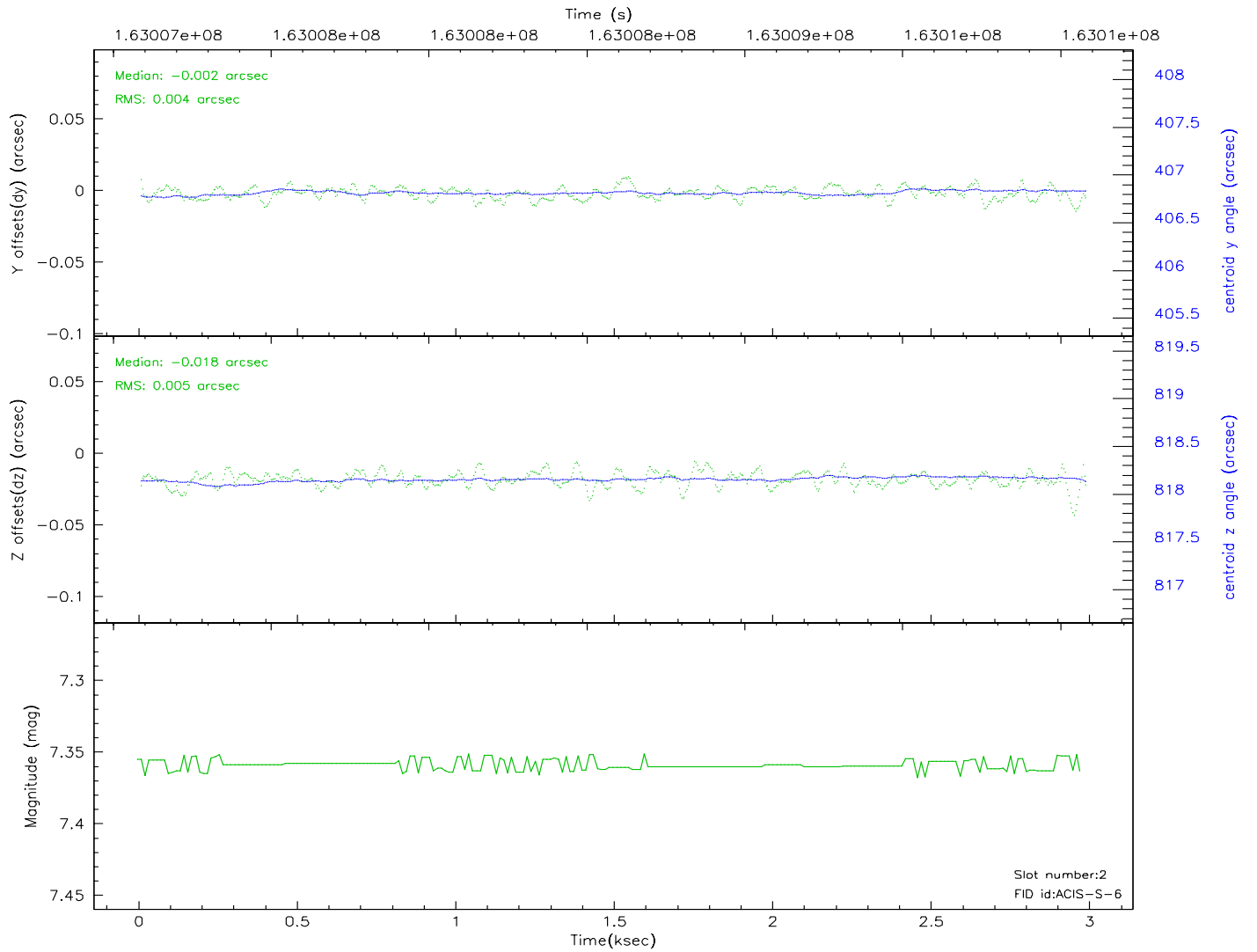
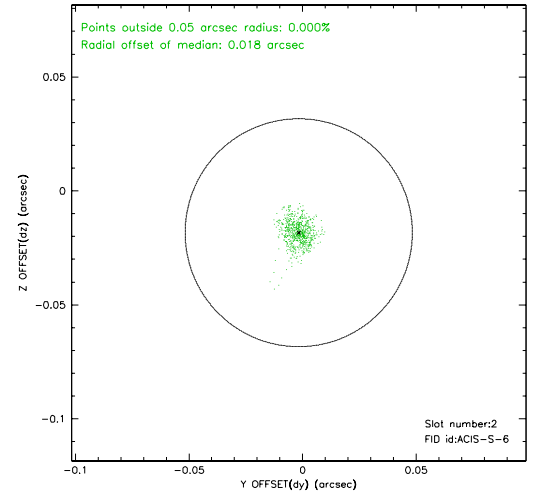
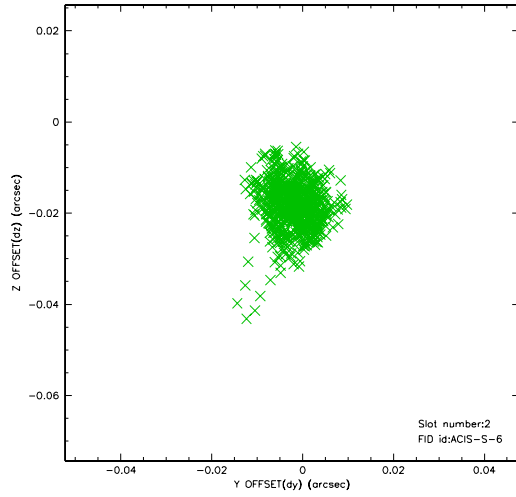
### 2.5.1 Slot 0



## 2.5.2 Slot 1

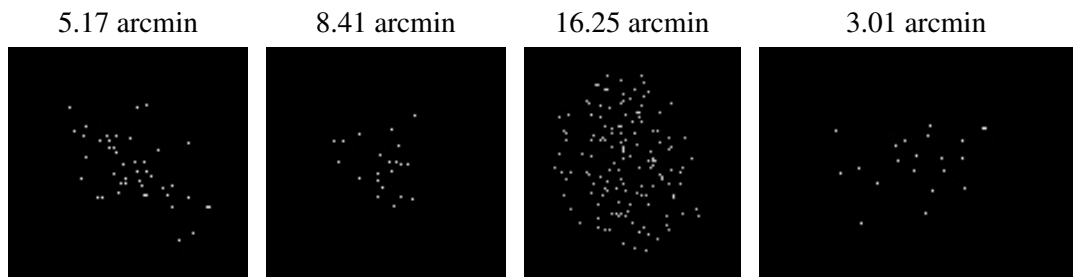


### 2.5.3 Slot 2





### 3 Point Sources



## A Summary

### A.1 Status

V&V Scientist	Beth Sundheim
V&V Date (YYYY-MM-DD)	2006.07.23
V&V Edition	1
V&V Disposition and Status	OK
V&V Charge Time	1.961

### A.2 Comments