

V&V Reference Report

L2 ASCDS Version : 7.6.8.1

Observation 4083 - L2 Version 001
Chandra X-Ray Center

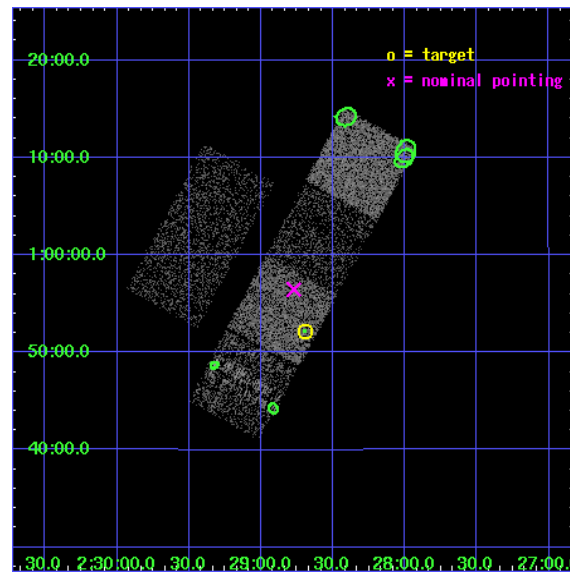
L2 Processing Date : Aug 8 2006

Contents

1	Front	2
2	OBI	3
2.1	OBI	3
2.1.1	Images	3
2.1.2	Bias	3
2.1.3	Parameters	4
2.1.4	Events	4
2.2	Compared Parameters	5
2.3	Aspect	6
2.4	Star Slots	9
2.4.1	Slot 3	9
2.4.2	Slot 4	10
2.4.3	Slot 5	11
2.4.4	Slot 6	12
2.4.5	Slot 7	13
2.5	FID Slots	14
2.5.1	Slot 0	14
2.5.2	Slot 1	15
2.5.3	Slot 2	16
3	Point Sources	17
A	Summary	18
A.1	Status	18
A.2	Comments	18

1 Front

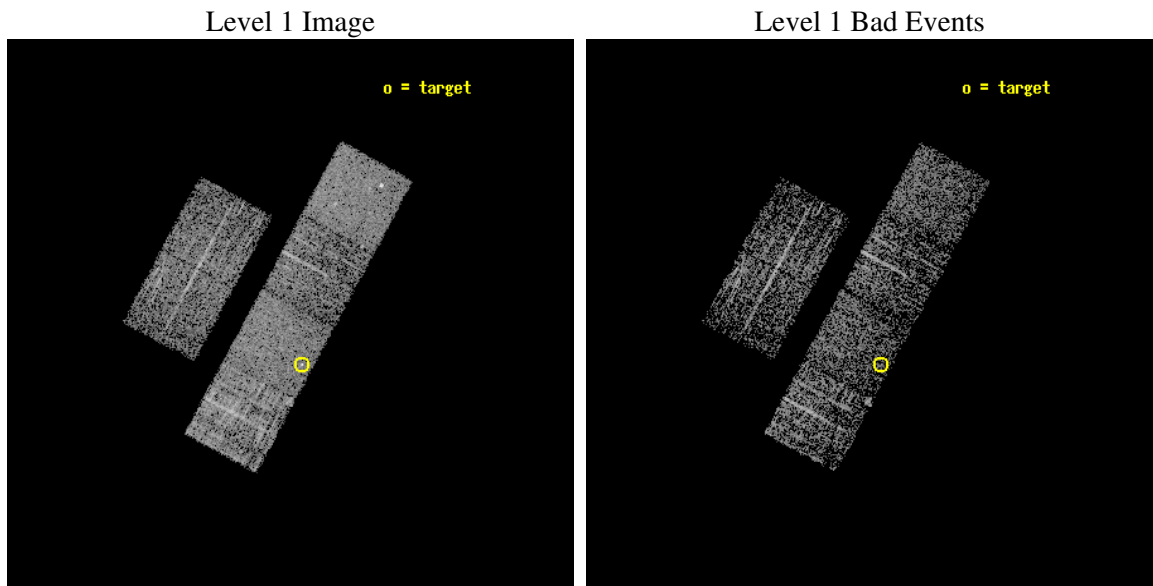
seq_num	700762
obs_id	4083
title	ARE ALL NARROW-LINE SEYFERT 1S ULTRASOFT X-RAY SOURCES?
observer	Prof RICHARD POGGE
object	SDSS J022841.48+005208.6
dtcycle	0
cycle	P
ra_targ	37.172917
dec_targ	0.869056
ra_nom	37.192927506556
dec_nom	0.94102770776539
roll_nom	118.44034303722
revision	2
ontime	2028.7999924421
liveltime	2003.1101053411
ontime2	2028.7999924421
ontime3	2028.7999924421
ontime5	2028.7999924421
ontime6	2028.7999924421
ontime7	2028.7999924421
ontime8	2028.7999924421
l2events	20054



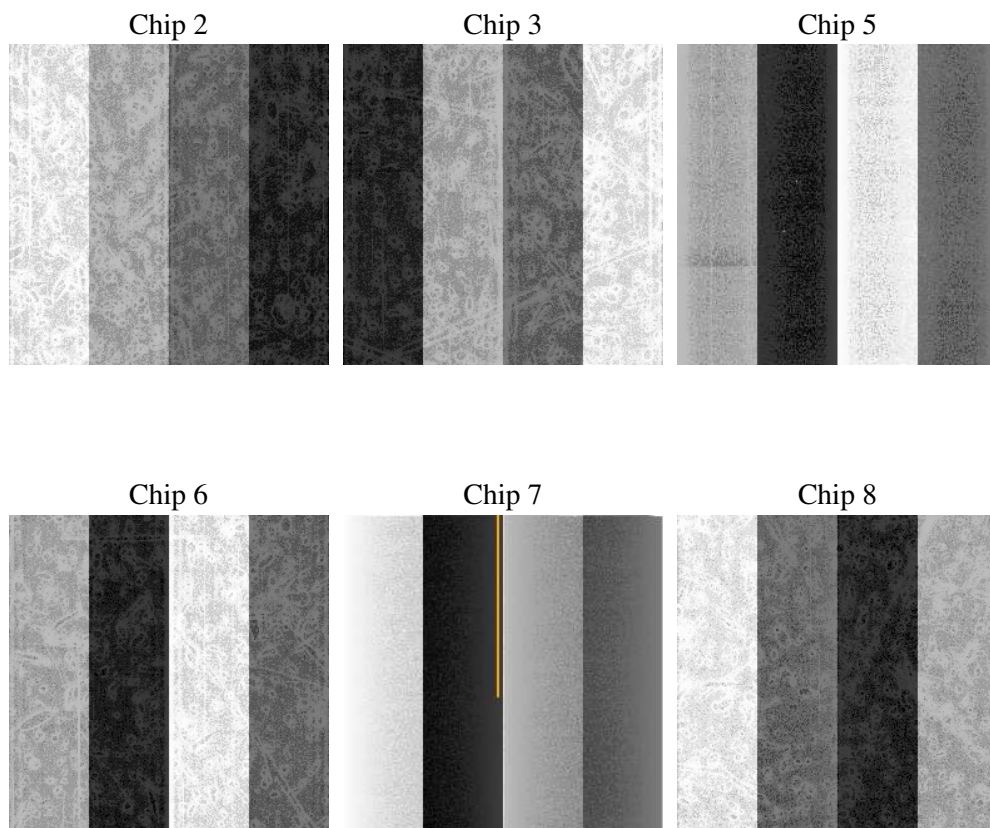
2 OBI

2.1 OBI

2.1.1 Images



2.1.2 Bias



2.1.3 Parameters

obi_num	0
ascdsver	7.6.8.1
caldsver	3.2.2
date	2006-08-08T22:13:55
revision	2

sched_exp_time	1954.000000
ontime	2032.1087165773
ontime2	2032.1087165773
ontime3	2032.1087165773
ontime5	2032.1087364852
ontime6	2032.1087165773
ontime7	2032.1087165773
ontime8	2032.1087165773
l1events	89756

2.1.4 Events

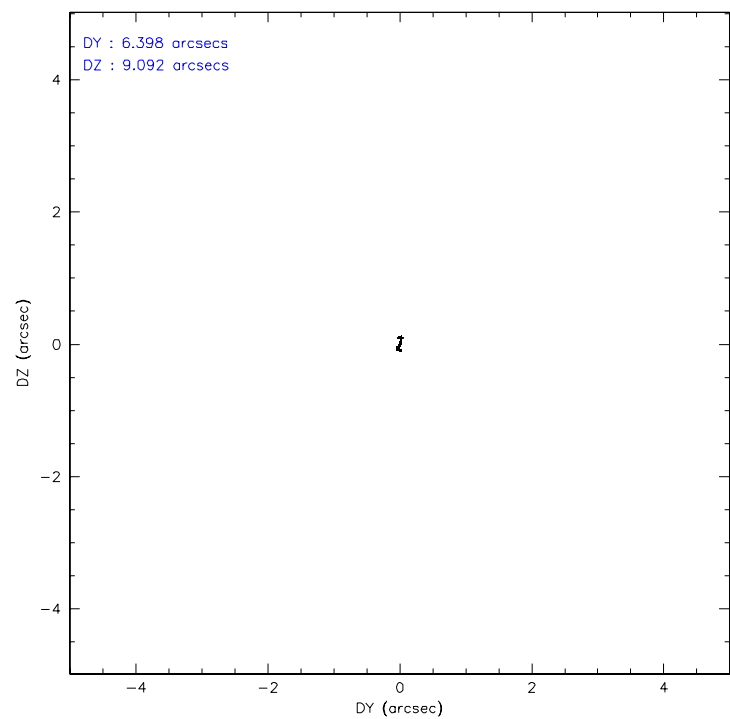
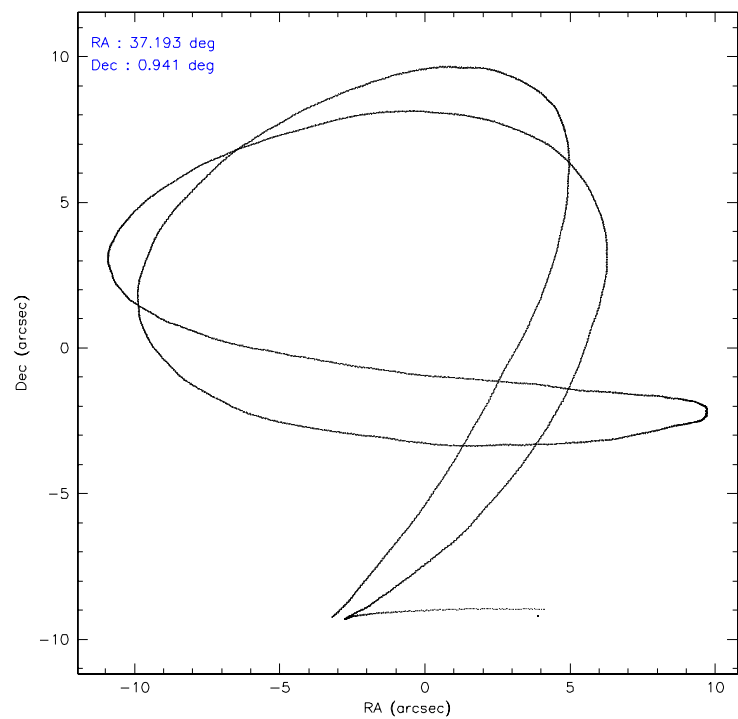
	ccd 2	ccd 3	ccd 5	ccd 6	ccd 7	ccd 8
level 1 events	12175	11663	17906	12523	15857	19632
rejected events	10524	10080	10049	10809	9773	12772
rejected %	86%	86%	56%	86%	61%	65%

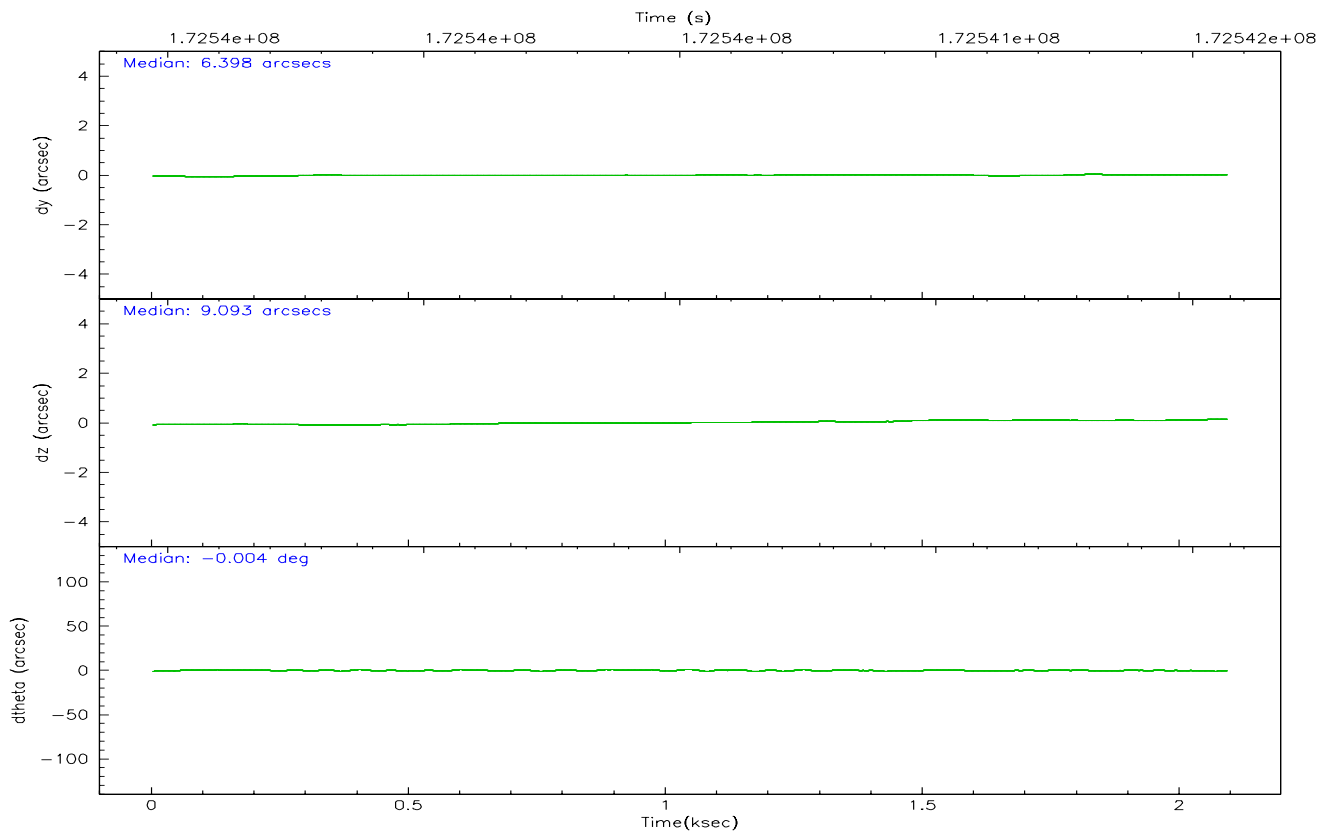
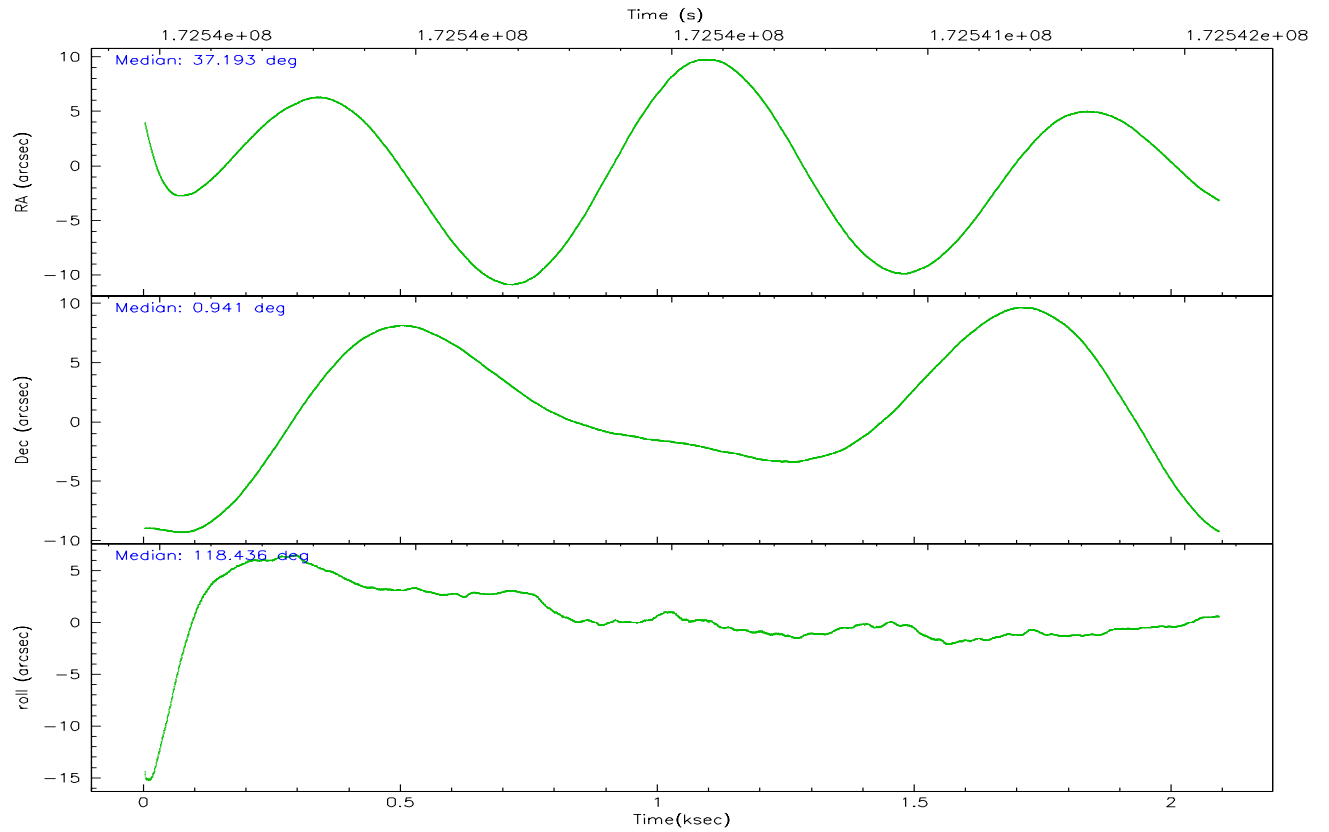
	ccd 2	ccd 3	ccd 5	ccd 6	ccd 7	ccd 8
grade 0 events	733	682	774	666	419	2312
	6%	5%	4%	5%	2%	11%
grade 1 events	9	2	65	6	7	15
	0%	0%	0%	0%	0%	0%
grade 2 events	380	332	2400	400	1501	1115
	3%	2%	13%	3%	9%	5%
grade 3 events	132	130	199	150	346	1096
	1%	1%	1%	1%	2%	5%
grade 4 events	142	154	175	141	285	959
	1%	1%	0%	1%	1%	4%
grade 5 events	484	499	832	549	970	682
	3%	4%	4%	4%	6%	3%
grade 6 events	265	289	4328	361	3545	1379
	2%	2%	24%	2%	22%	7%
grade 7 events	10030	9575	9133	10250	8784	12074
	82%	82%	51%	81%	55%	61%

2.2 Compared Parameters

Parameter	Planned	Actual	Parameter	Planned	Actual
Instrument	ACIS	ACIS	Obspar format version number	6	6
Detector	ACIS-235678	ACIS-235678	Obspar file type	PREDICTED	ACTUAL
Grating	NONE	NONE	Obspar update status	NONE	UPDATED
Data mode	FAINT	FAINT	On-chip summing requested	N	N
Observation mode	POINTING	POINTING	Subarray requested	NONE	NONE
Pointing RA	37.216219	37.19292750655633	Alternating exposures requested	N	N
Pointing Dec	0.927178	0.9410277077653917	Primary exposure time	0.000000	3.2
Pointing Roll	118.283462	118.4403430372205			
SIM focus pos (mm)	-0.684267	-0.6828225247311905			
SIM defocus (mm)	0	0.001444936568705701			
SIM translation stage pos (mm)	-190.132523	-190.1400660498719			
SIM translation stage offset (mm)	0	0.00754346686406393			
Observation start time	172539613.184000	172538465.52754			
Observation start date	2003-06-20T23:39:09	2003-06-20T23:21:05			
Observation end time	172541567.184000	172542333.87771			
Observation end date	2003-06-21T00:11:43	2003-06-21T00:25:33			
Read mode	TIMED	TIMED			

2.3 Aspect



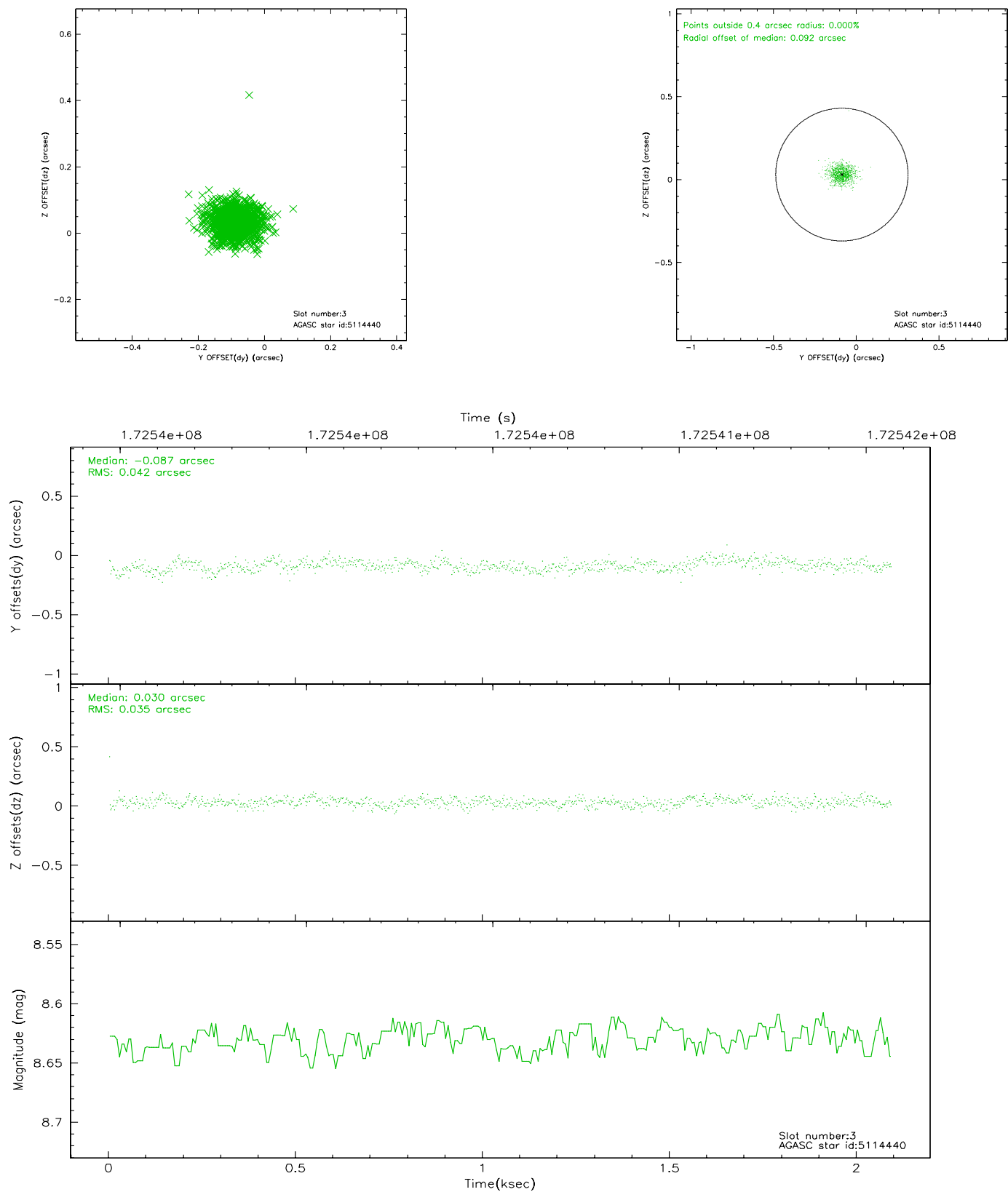


Slot Statistics

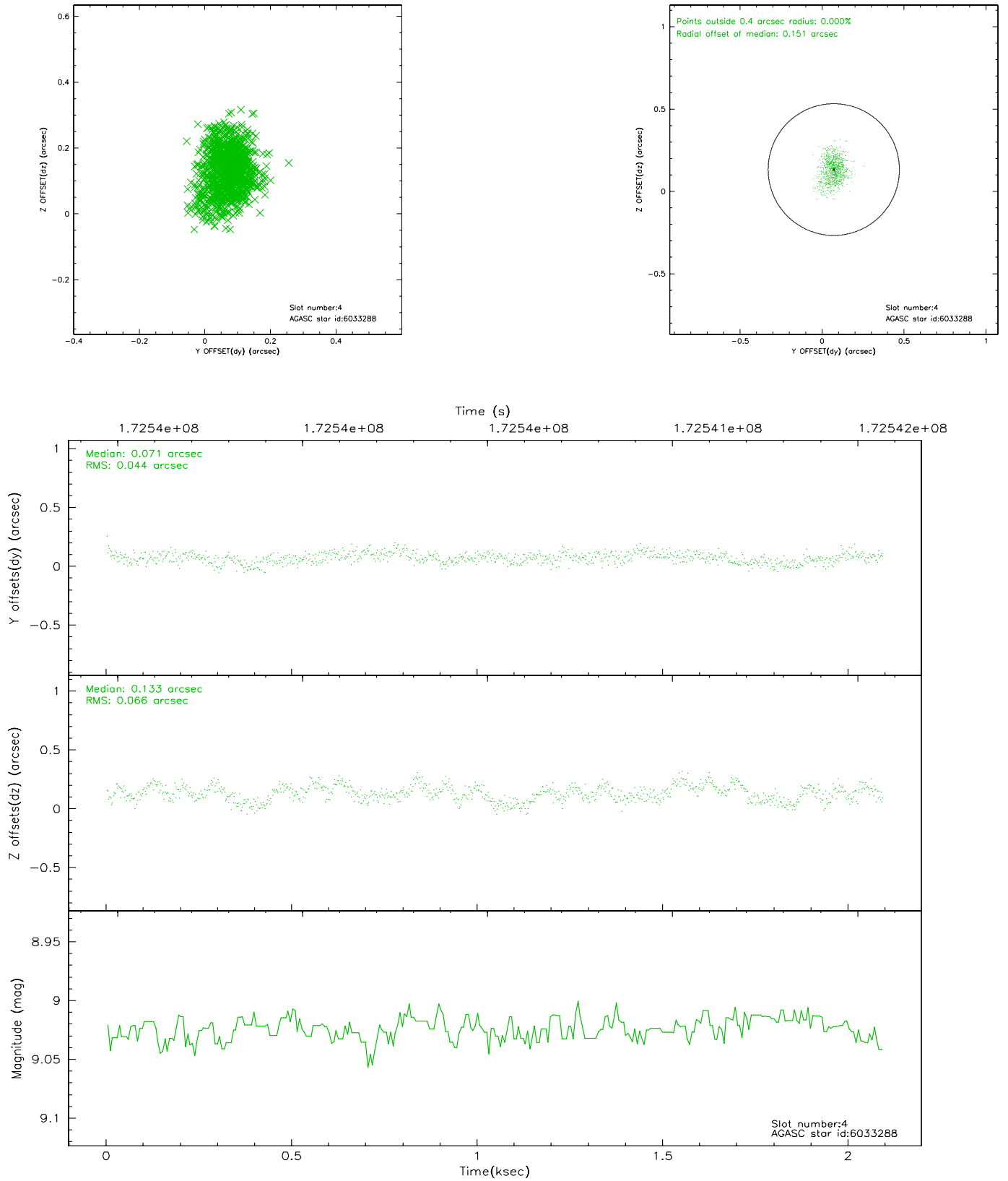
slot	status	id	mag	n_pts	med_dy	med_dz	dr1	dr2	ra	dec	mean_y	mean_z
0	FID	ACIS-S-2	7.10	511	-0.027	0.002	0.005	0.010	0.000000	0.000000	-759.15	-1730.33
1	FID	ACIS-S-4	7.20	509	0.005	0.027	0.006	0.009	0.000000	0.000000	2152.73	174.94
2	FID	ACIS-S-6	7.36	510	-0.006	-0.021	0.007	0.011	0.000000	0.000000	406.87	815.85
3	GUIDE	5114440	8.63	1021	-0.087	0.030	0.056	0.094	37.095498	1.481540	1963.70	-562.40
4	GUIDE	6033288	9.02	1021	0.071	0.133	0.084	0.139	37.919400	0.743225	-1779.52	-1915.64
5	GUIDE	6033872	9.47	1021	0.134	-0.030	0.109	0.174	37.689972	0.822033	-1142.24	-1324.24
6	GUIDE	6034024	9.70	1020	-0.017	-0.004	0.090	0.148	37.505848	1.160303	244.80	-1316.68
7	GUIDE	5115488	9.22	1019	-0.095	-0.128	0.082	0.133	36.407489	1.225671	2326.53	2053.06

2.4 Star Slots

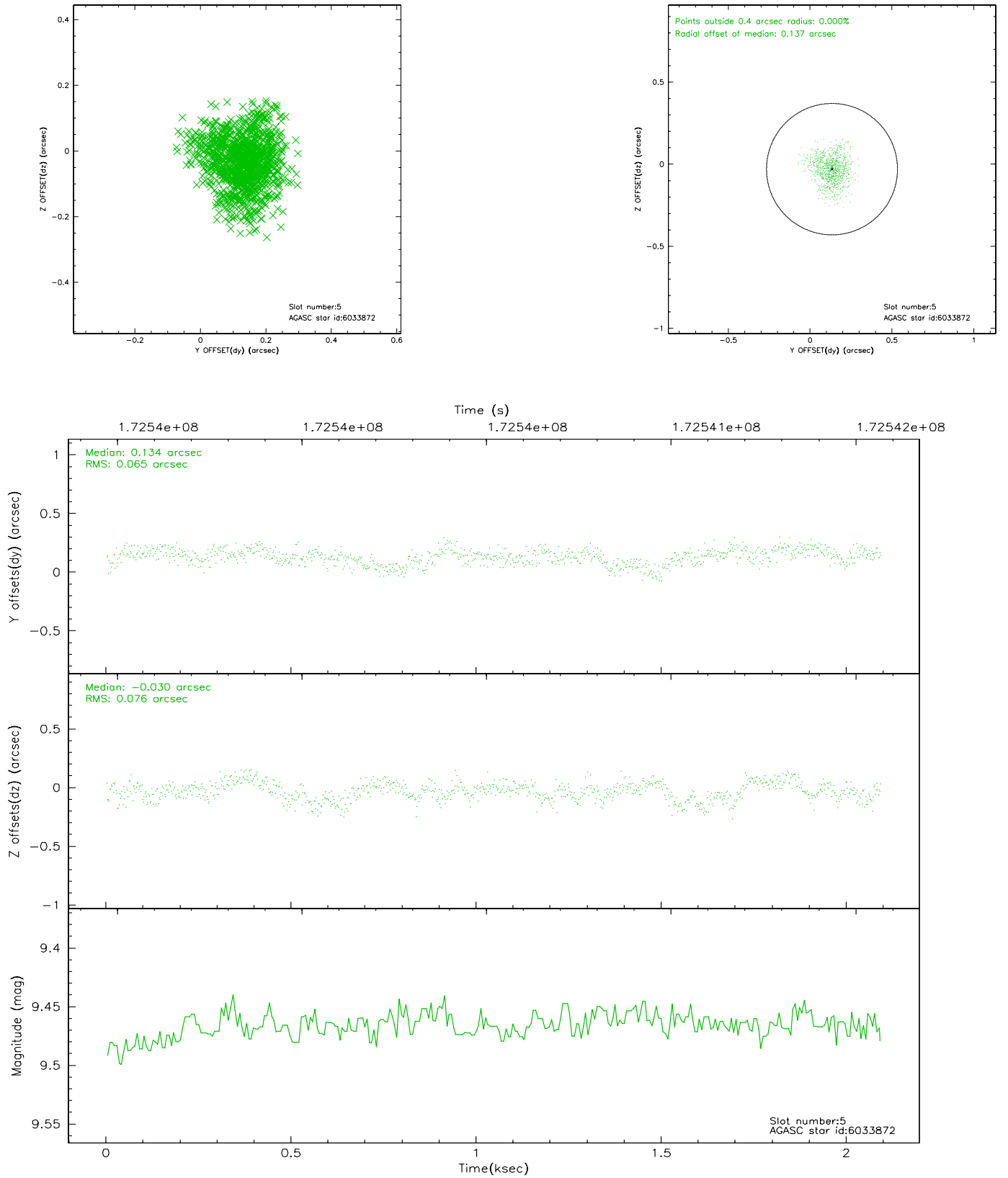
2.4.1 Slot 3



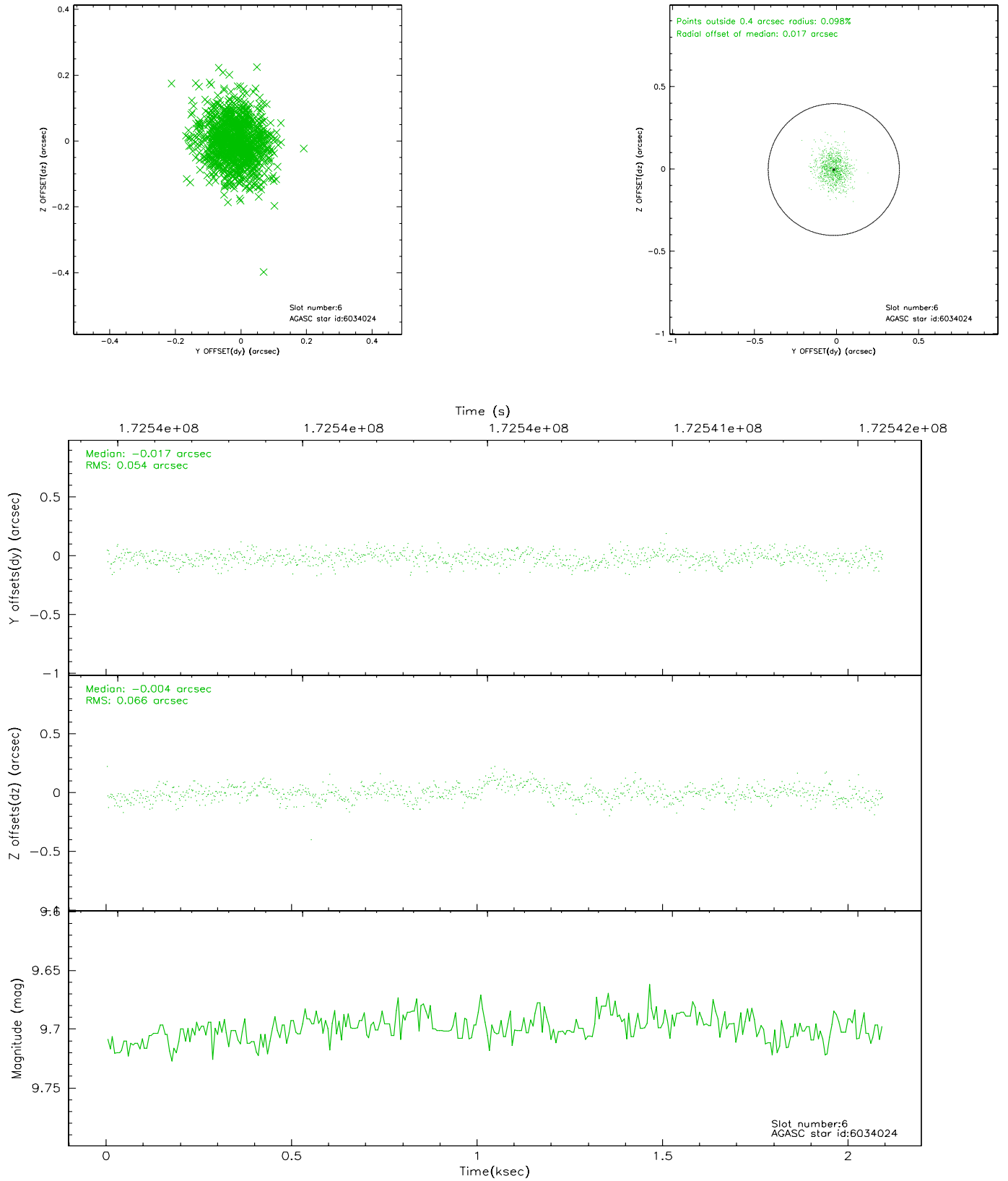
2.4.2 Slot 4



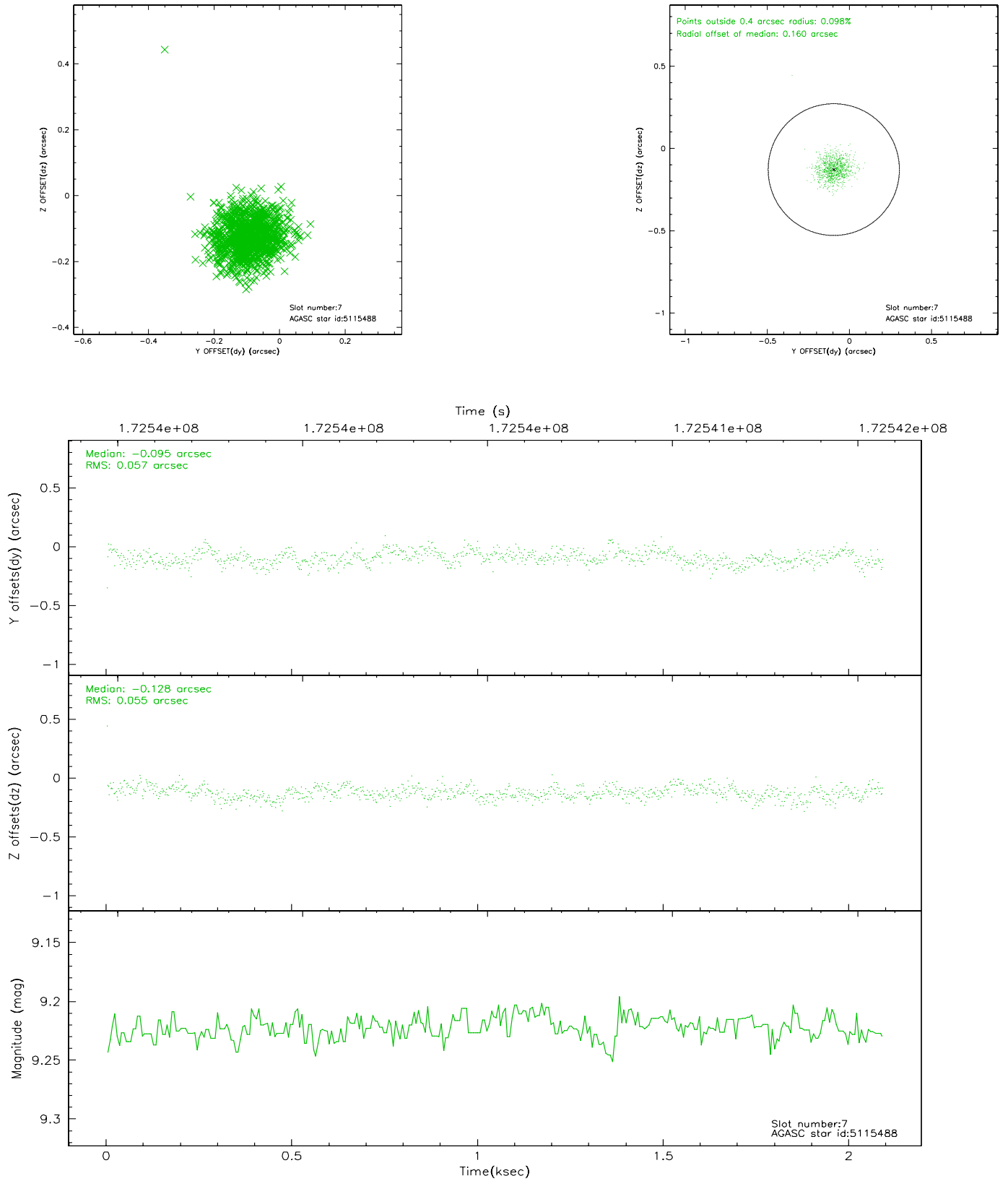
2.4.3 Slot 5



2.4.4 Slot 6

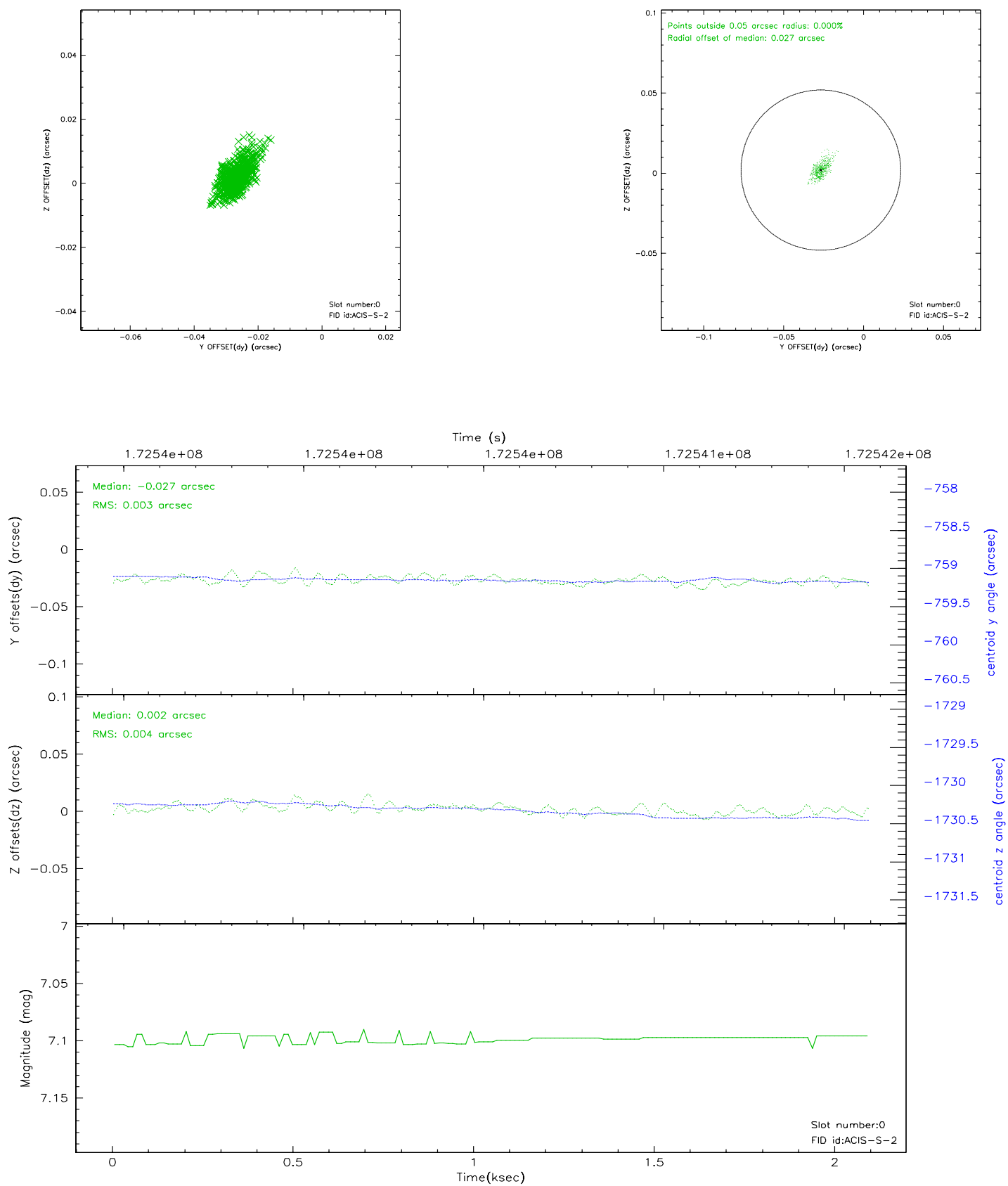


2.4.5 Slot 7

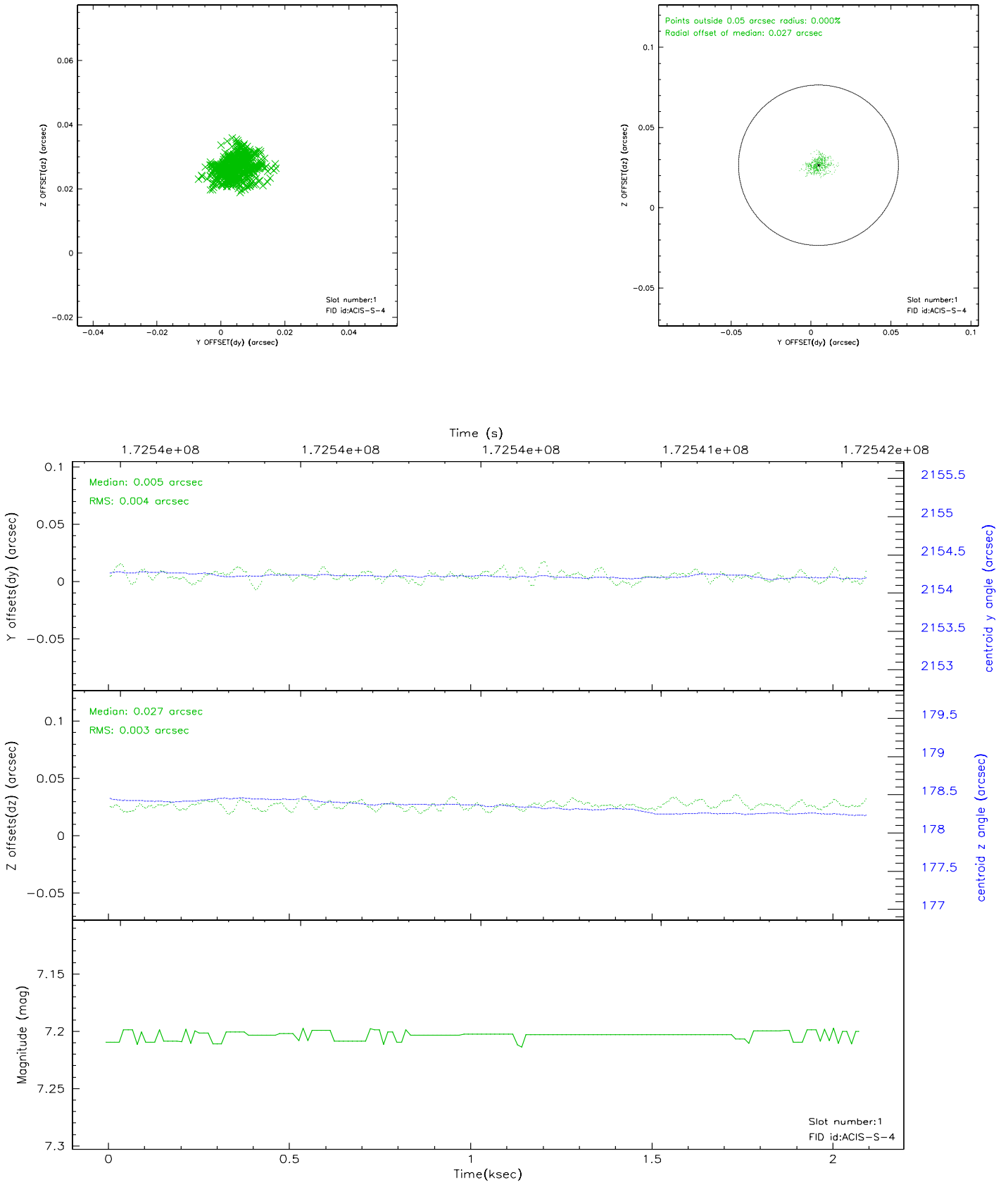


2.5 FID Slots

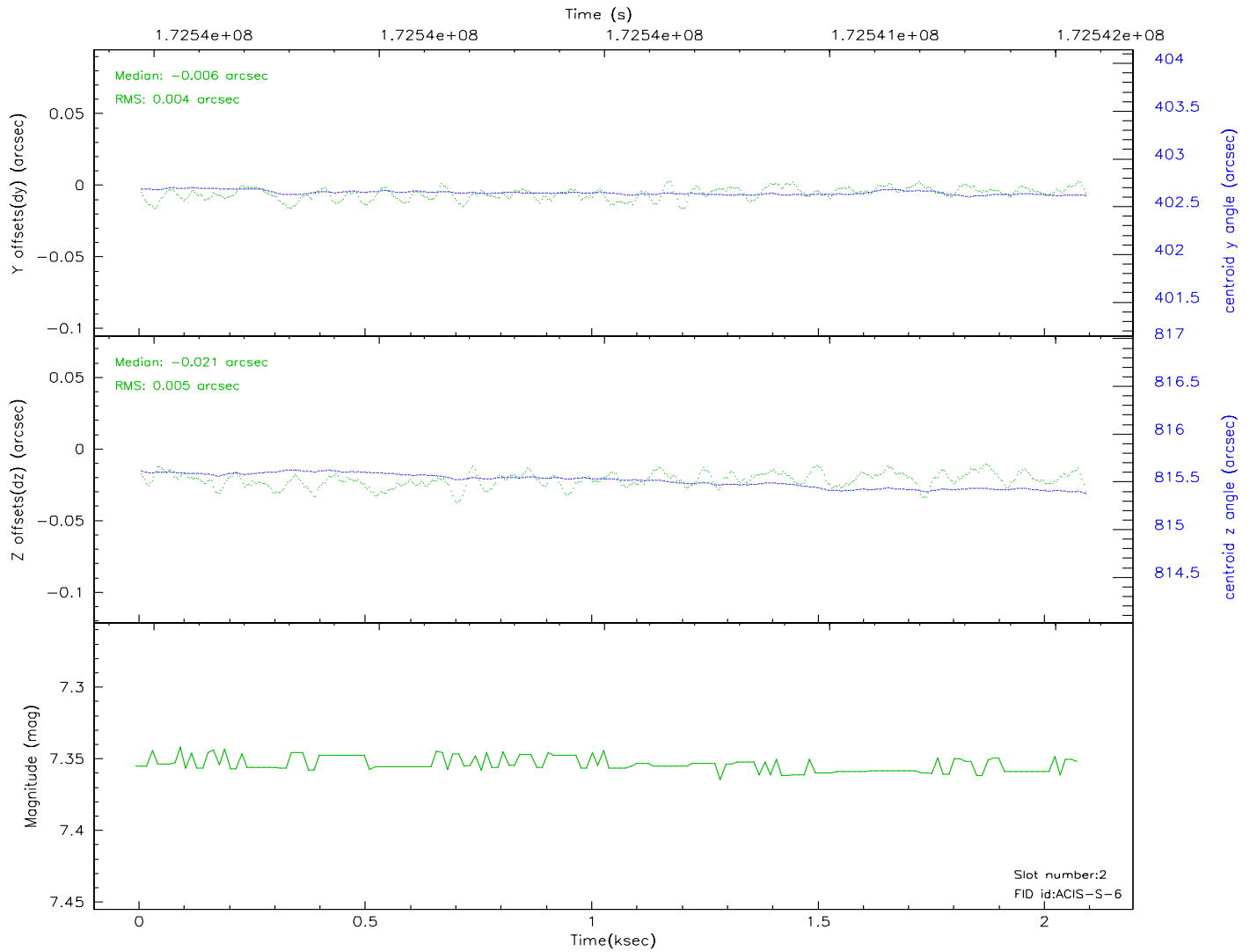
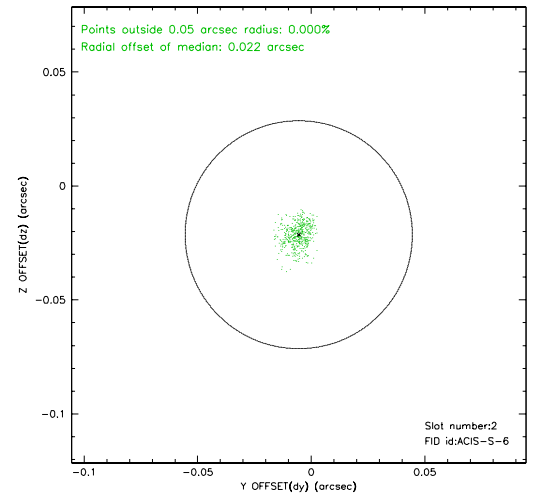
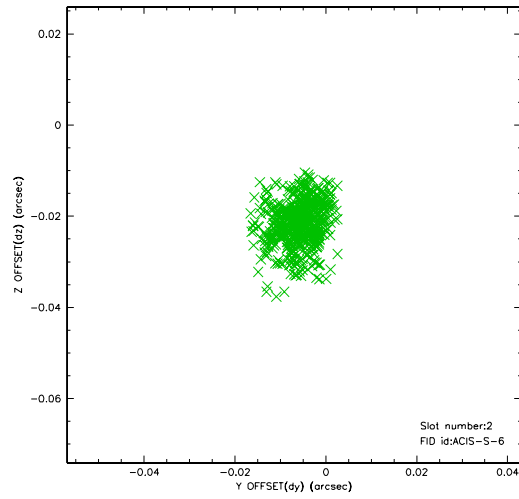
2.5.1 Slot 0



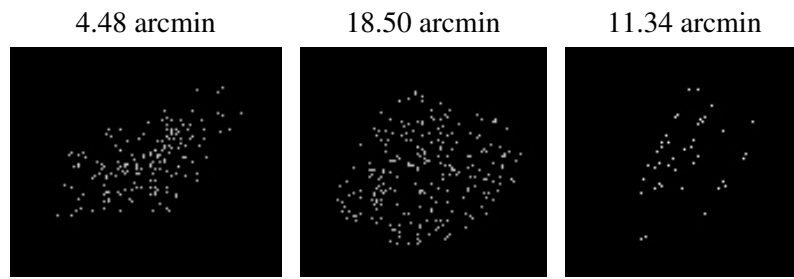
2.5.2 Slot 1



2.5.3 Slot 2



3 Point Sources



A Summary

A.1 Status

V&V Scientist	Jen Lauer
V&V Date (YYYY-MM-DD)	2006.08.09
V&V Edition	1
V&V Disposition and Status	OK
V&V Charge Time	2.03

A.2 Comments

The ACIS focal plane temperature was above calibration limits for the entire observation.

The ACIS spectral response calibration is less accurate at these warmer temperatures than it is at -119.7 C. Users whose science objectives depend on the most accurate spectral response (ie: fitting line-rich spectra) may notice an effect. Users whose science objectives do not depend on the most accurate spectral response should not notice an effect.