

V&V Reference Report

L2 ASCDS Version : 7.6.8

Observation 4076 - L2 Version 001
Chandra X-Ray Center

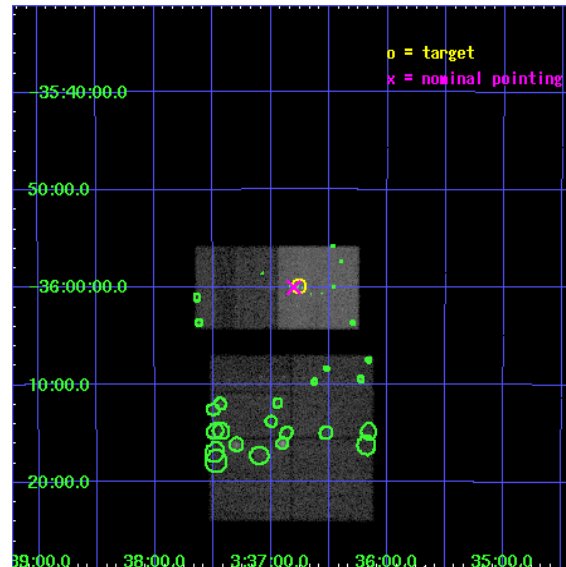
L2 Processing Date : Jun 28 2006

Contents

1	Front	2
2	OBI	3
2.1	OBI	3
2.1.1	Images	3
2.1.2	Bias	3
2.1.3	Parameters	4
2.1.4	Events	4
2.2	Compared Parameters	5
2.3	Aspect	6
2.4	Star Slots	9
2.4.1	Slot 3	9
2.4.2	Slot 4	10
2.4.3	Slot 5	11
2.4.4	Slot 6	12
2.4.5	Slot 7	13
2.5	FID Slots	14
2.5.1	Slot 0	14
2.5.2	Slot 1	15
2.5.3	Slot 2	16
3	Point Sources	17
A	Summary	18
A.1	Status	18
A.2	Comments	18

1 Front

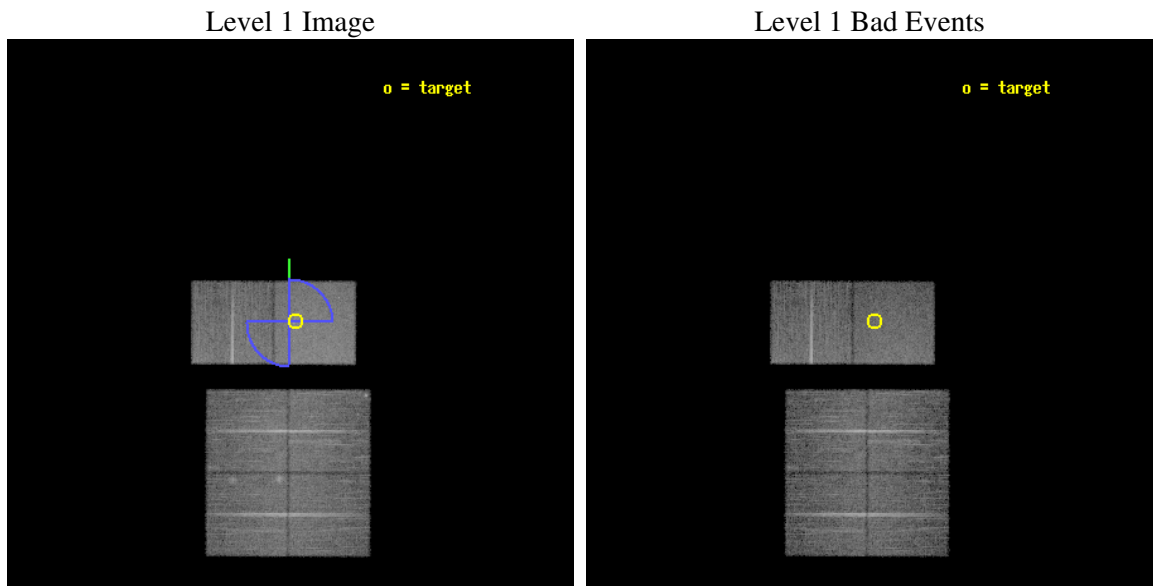
seq_num	700755
obs_id	4076
title	PROBING THE STRUCTURE OF THE NARROW-LINE REGION IN SEYFERT GALAXIES WITH CXO IMAGING SPECTROSCOPY
observer	PROF. STEVEN KRAEMER
object	NGC 1386
dtcycle	0
cycle	P
ra_targ	54.189167
dec_targ	-35.999083
ra_nom	54.200915969694
dec_nom	-36.000741265448
roll_nom	0.16352984368594
revision	2
ontime	19887.999925911
livetime	19636.166095734
ontime0	19887.999925911
ontime1	19887.999925911
ontime2	19887.999925911
ontime3	19887.999925911
ontime6	19887.999925911
ontime7	19887.999925911
l2events	144418



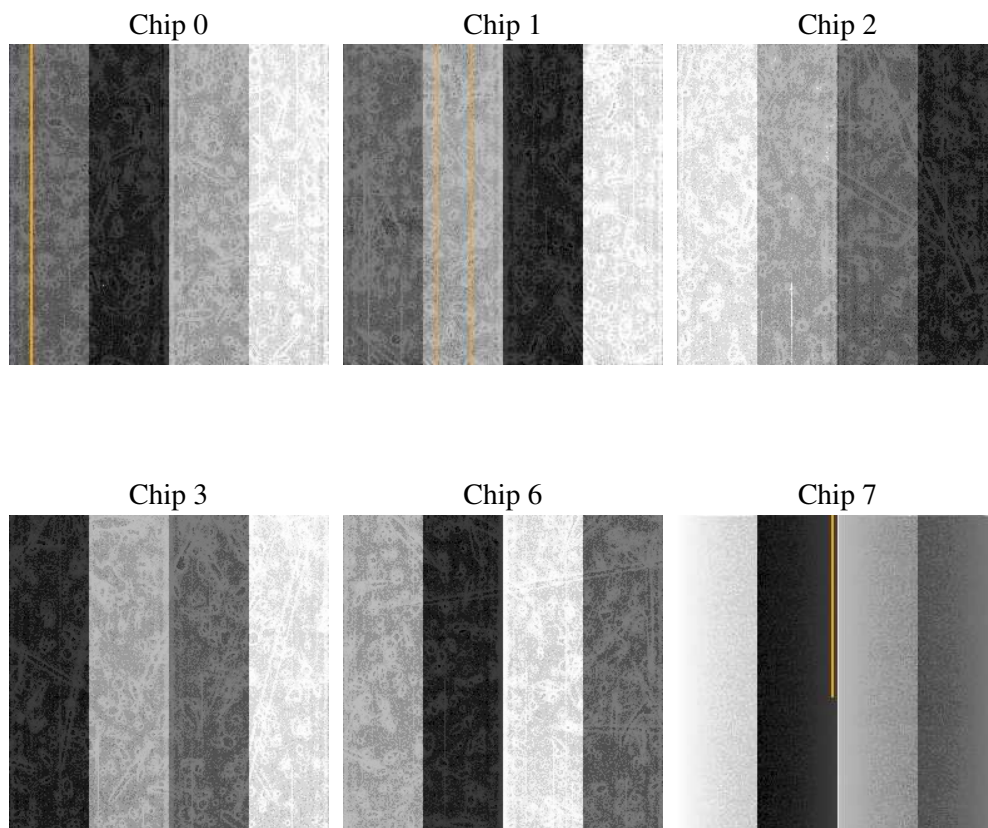
2 OBI

2.1 OBI

2.1.1 Images



2.1.2 Bias



2.1.3 Parameters

obi_num	0
ascdsver	7.6.8
caldsver	3.2.2
date	2006-06-28T04:52:53
revision	2

sched_exp_time	19750.000000
ontime	19893.295862347
ontime0	19893.295862347
ontime1	19893.295862347
ontime2	19893.295862347
ontime3	19893.295862347
ontime6	19893.295862347
ontime7	19893.295862347
l1events	690628

2.1.4 Events

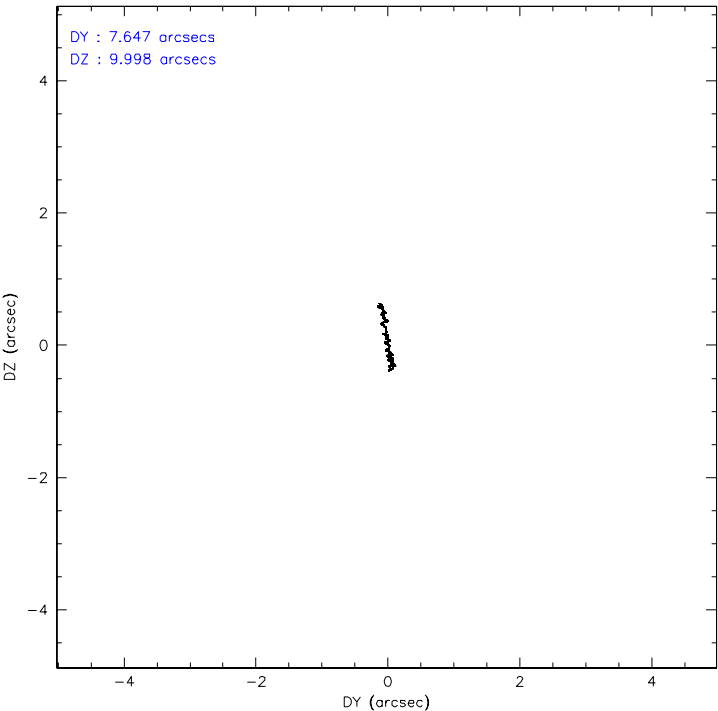
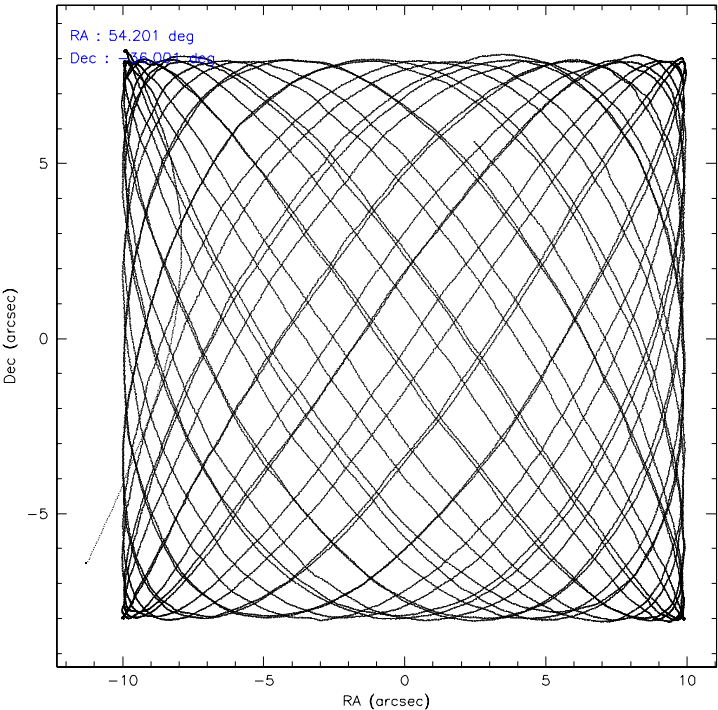
	ccd 0	ccd 1	ccd 2	ccd 3	ccd 6	ccd 7
level 1 events	105397	101379	107889	110095	115219	150649
rejected events	84772	82113	89459	90887	95299	90229
rejected %	80%	80%	82%	82%	82%	59%

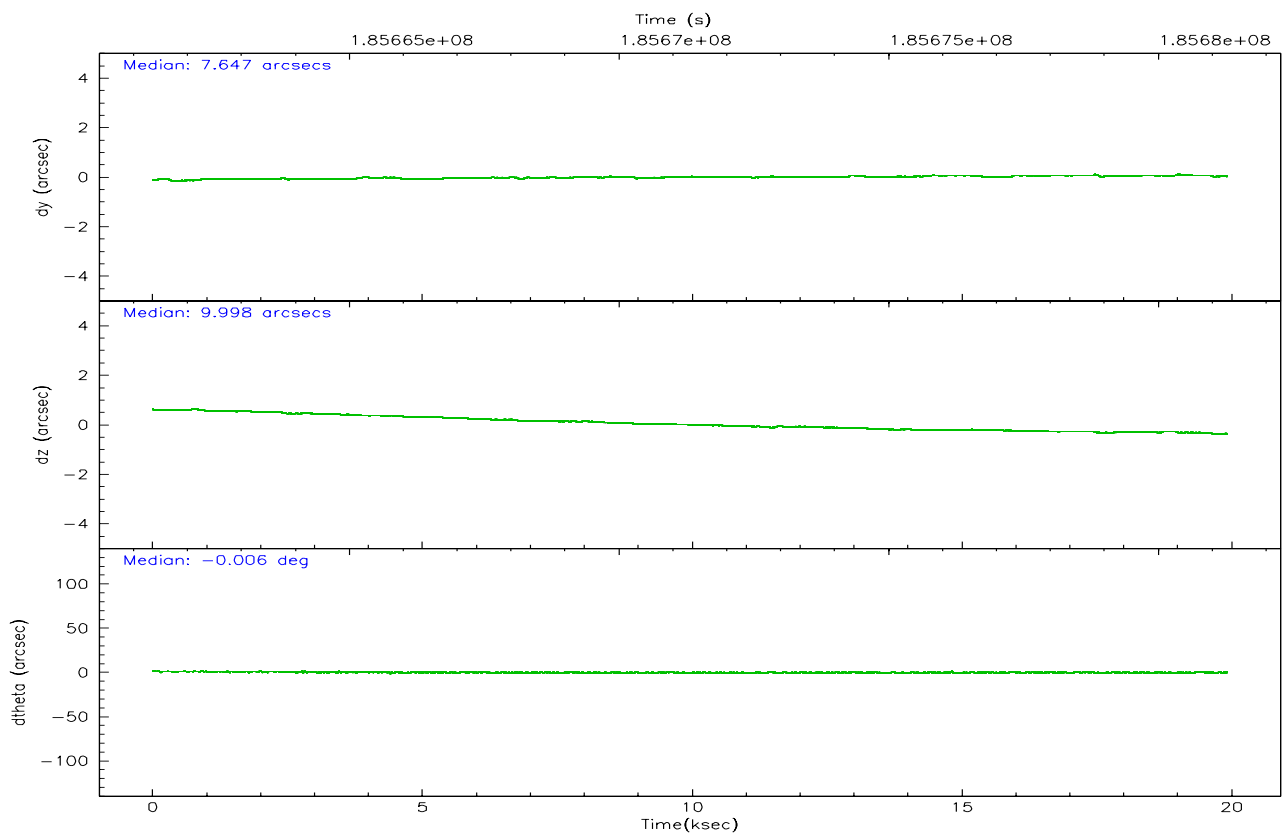
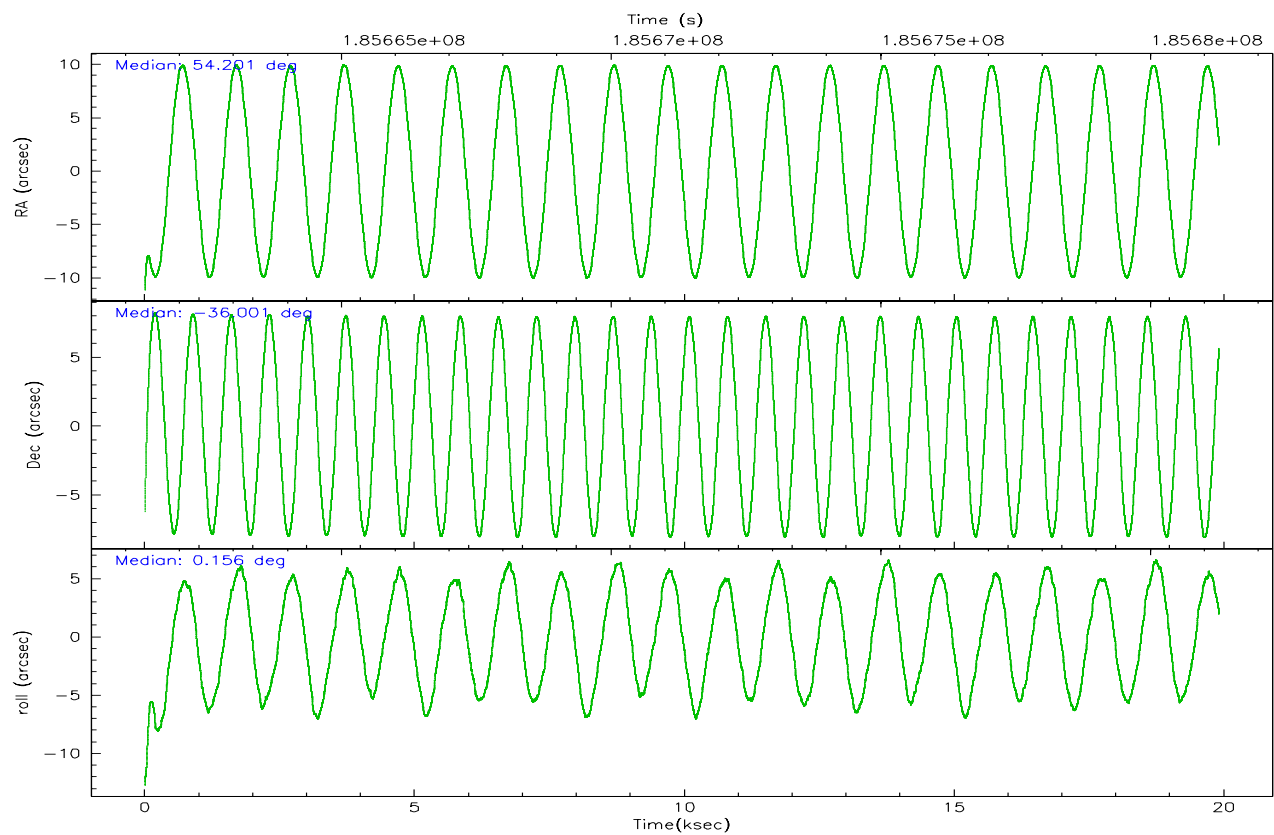
	ccd 0	ccd 1	ccd 2	ccd 3	ccd 6	ccd 7
grade 0 events	9441	7176	8443	8506	8543	4789
	8%	7%	7%	7%	7%	3%
grade 1 events	68	50	94	60	59	106
	0%	0%	0%	0%	0%	0%
grade 2 events	4913	5296	3942	4688	5089	15092
	4%	5%	3%	4%	4%	10%
grade 3 events	1404	1447	1310	1284	1310	3231
	1%	1%	1%	1%	1%	2%
grade 4 events	1351	1362	1450	1329	1309	3190
	1%	1%	1%	1%	1%	2%
grade 5 events	4421	4504	3954	4675	5049	9445
	4%	4%	3%	4%	4%	6%
grade 6 events	3526	3994	3298	3412	3686	34139
	3%	3%	3%	3%	3%	22%
grade 7 events	80273	77550	85398	86141	90174	80657
	76%	76%	79%	78%	78%	53%

2.2 Compared Parameters

Parameter	Planned	Actual	Parameter	Planned	Actual
Instrument	ACIS	ACIS	Obspar format version number	6	6
Detector	ACIS-012367	ACIS-012367	Obspar file type	PREDICTED	ACTUAL
Grating	NONE	NONE	Obspar update status	NONE	UPDATED
Data mode	FAINT	FAINT	On-chip summing requested	N	N
Observation mode	POINTING	POINTING	Subarray requested	NONE	NONE
Pointing RA	54.172067	54.20091596969424	Alternating exposures requested	N	N
Pointing Dec	-36.014753	-36.00074126544786	Primary exposure time	0.000000	3.2
Pointing Roll	359.989945	0.1635298436859448			
Roll angle	45.000000	45.000000			
Roll tolerance	45.000000	45.000000			
Roll constraint allows 180D rotation	Y	Y			
SIM focus pos (mm)	-0.684267	-0.6828225247311905			
SIM defocus (mm)	0	0.001444936568705701			
SIM translation stage pos (mm)	-190.132523	-190.1400660498719			
SIM translation stage offset (mm)	0	0.00754346686406393			
Observation start time	185661526.184000	185660479.70237			
Observation start date	2003-11-19T20:37:42	2003-11-19T20:21:19			
Observation end time	185681276.184000	185682169.72831			
Observation end date	2003-11-20T02:06:52	2003-11-20T02:22:49			
Read mode	TIMED	TIMED			

2.3 Aspect



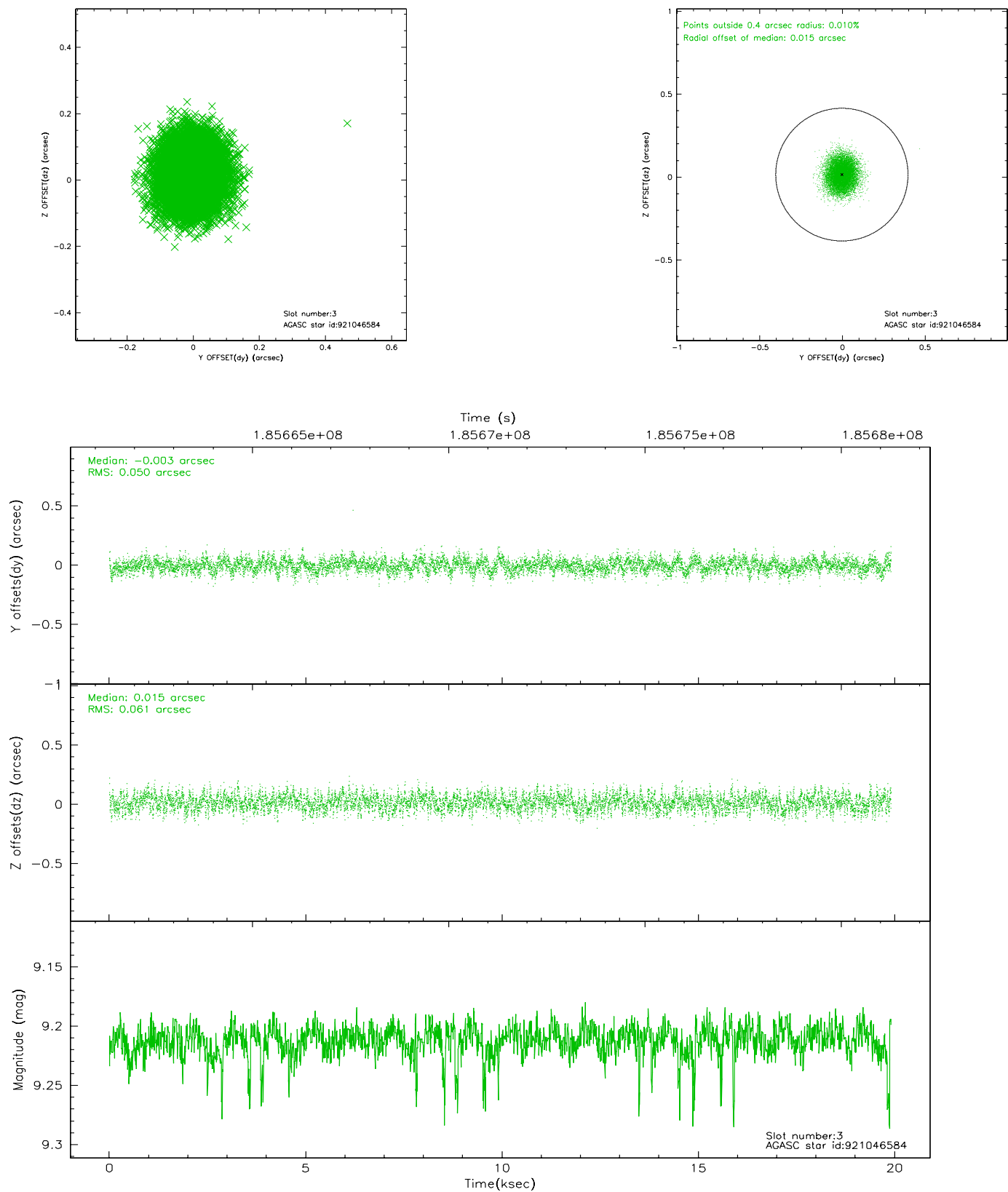


Slot Statistics

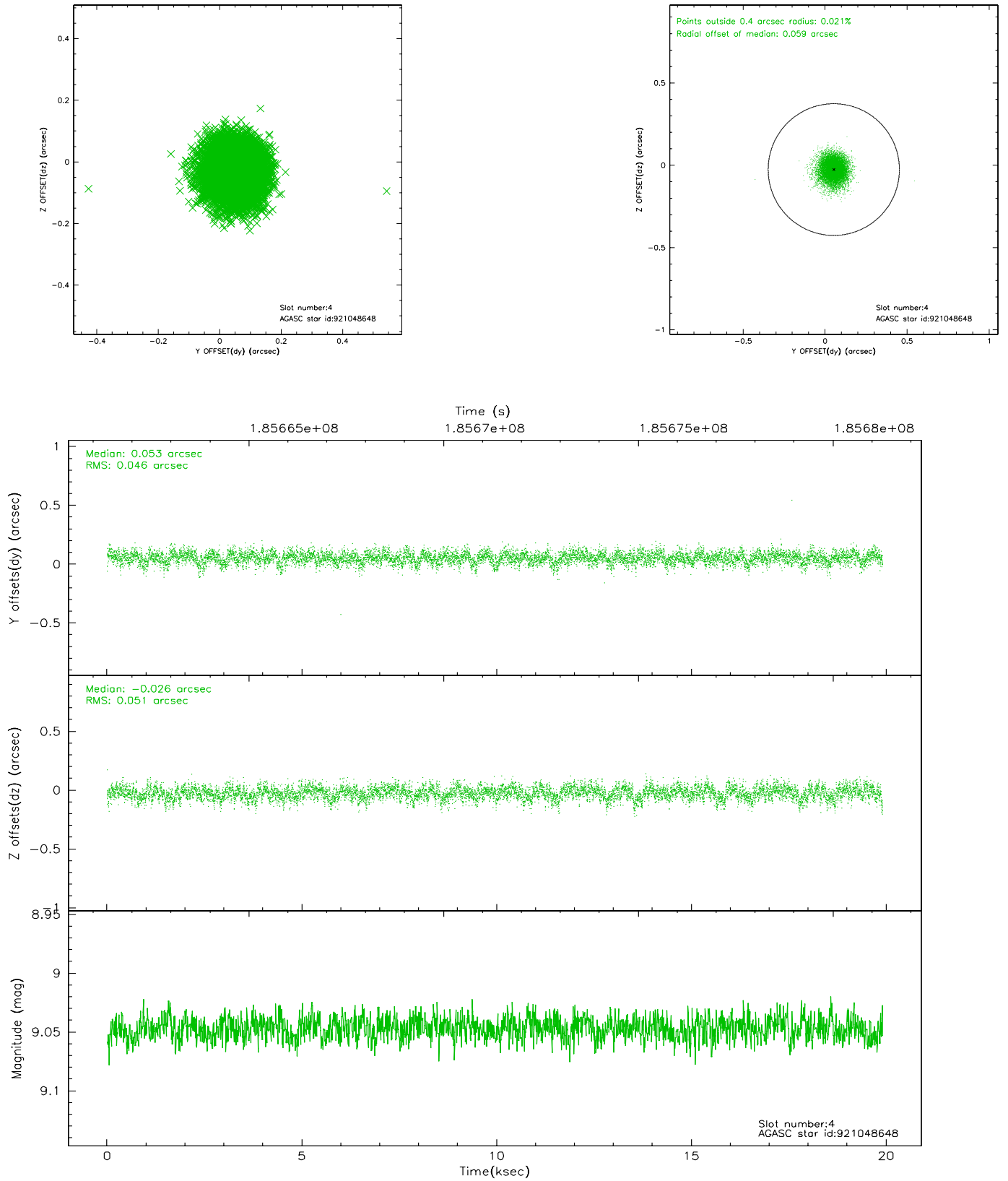
slot	status	id	mag	n_pts	med_dy	med_dz	dr1	dr2	ra	dec	mean_y	mean_z
0	FID	ACIS-S-1	7.18	4857	0.015	-0.008	0.013	0.028	0.000000	0.000000	935.65	-1726.94
1	FID	ACIS-S-5	7.24	4857	-0.030	0.019	0.008	0.014	0.000000	0.000000	-1813.29	170.44
2	FID	ACIS-S-6	7.35	4857	-0.006	0.001	0.018	0.032	0.000000	0.000000	400.97	814.61
3	GUIDE	921046584	9.21	9705	-0.003	0.015	0.084	0.134	53.976815	-36.314393	-565.71	-1079.42
4	GUIDE	921048648	9.05	9707	0.053	-0.026	0.072	0.119	53.884610	-35.870023	-838.35	519.68
5	GUIDE	921966544	7.91	9714	-0.044	-0.023	0.042	0.068	54.743508	-35.636012	1671.60	1359.08
6	GUIDE	921966928	8.77	9711	-0.039	0.035	0.067	0.109	54.599932	-36.625009	1237.42	-2199.01
7	GUIDE	921967072	7.66	9713	0.033	0.001	0.057	0.091	54.269247	-36.292226	282.77	-999.12

2.4 Star Slots

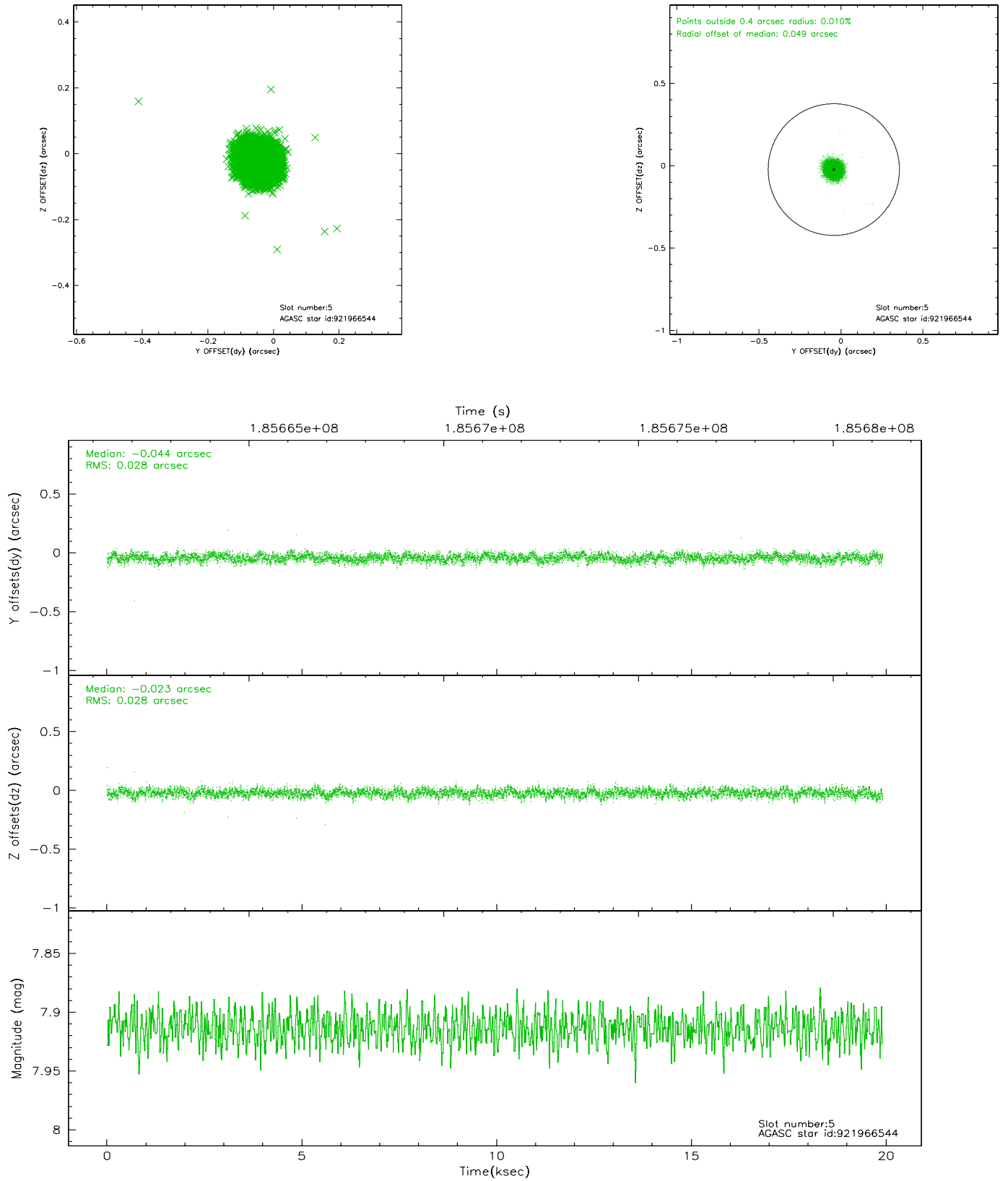
2.4.1 Slot 3



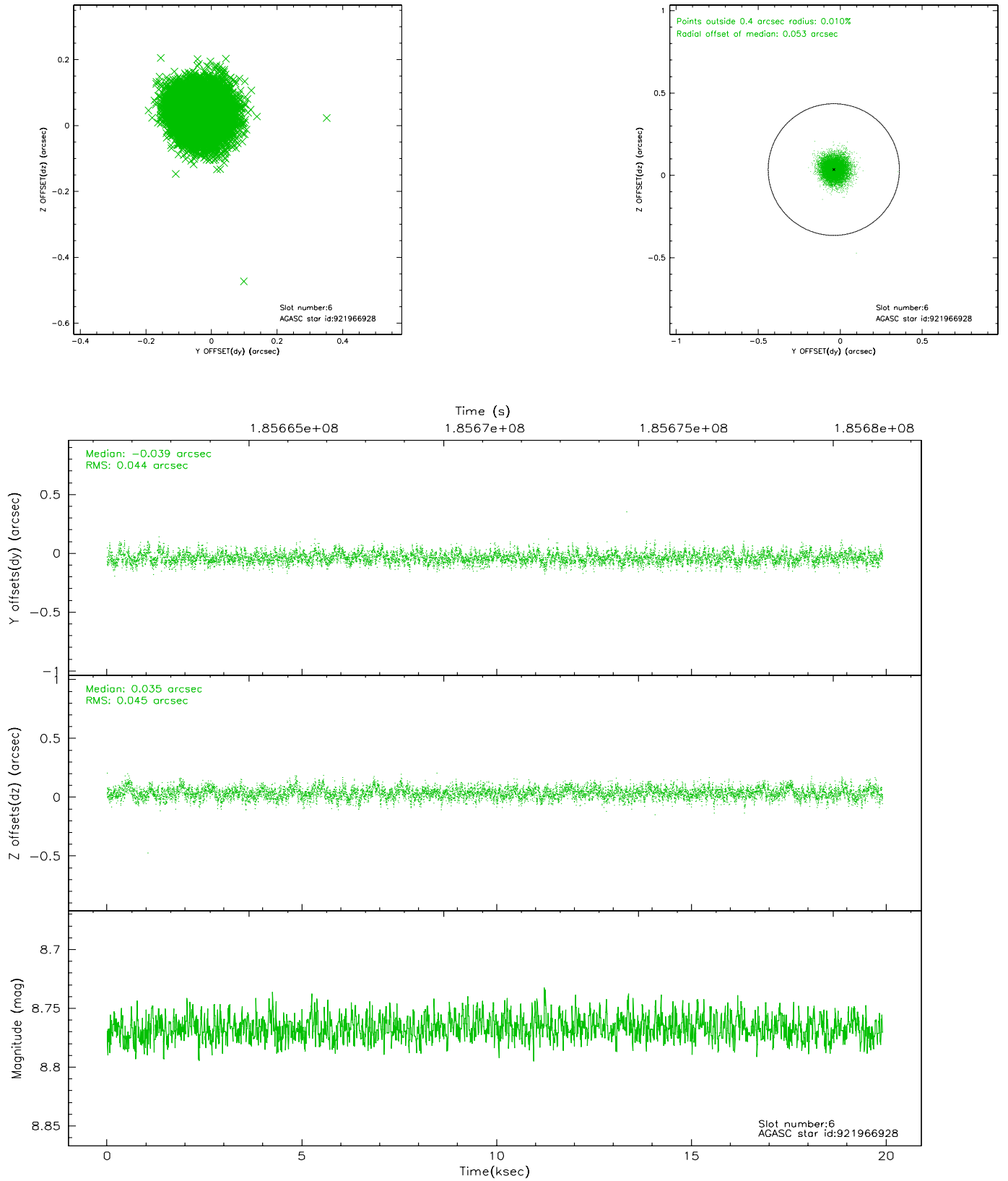
2.4.2 Slot 4



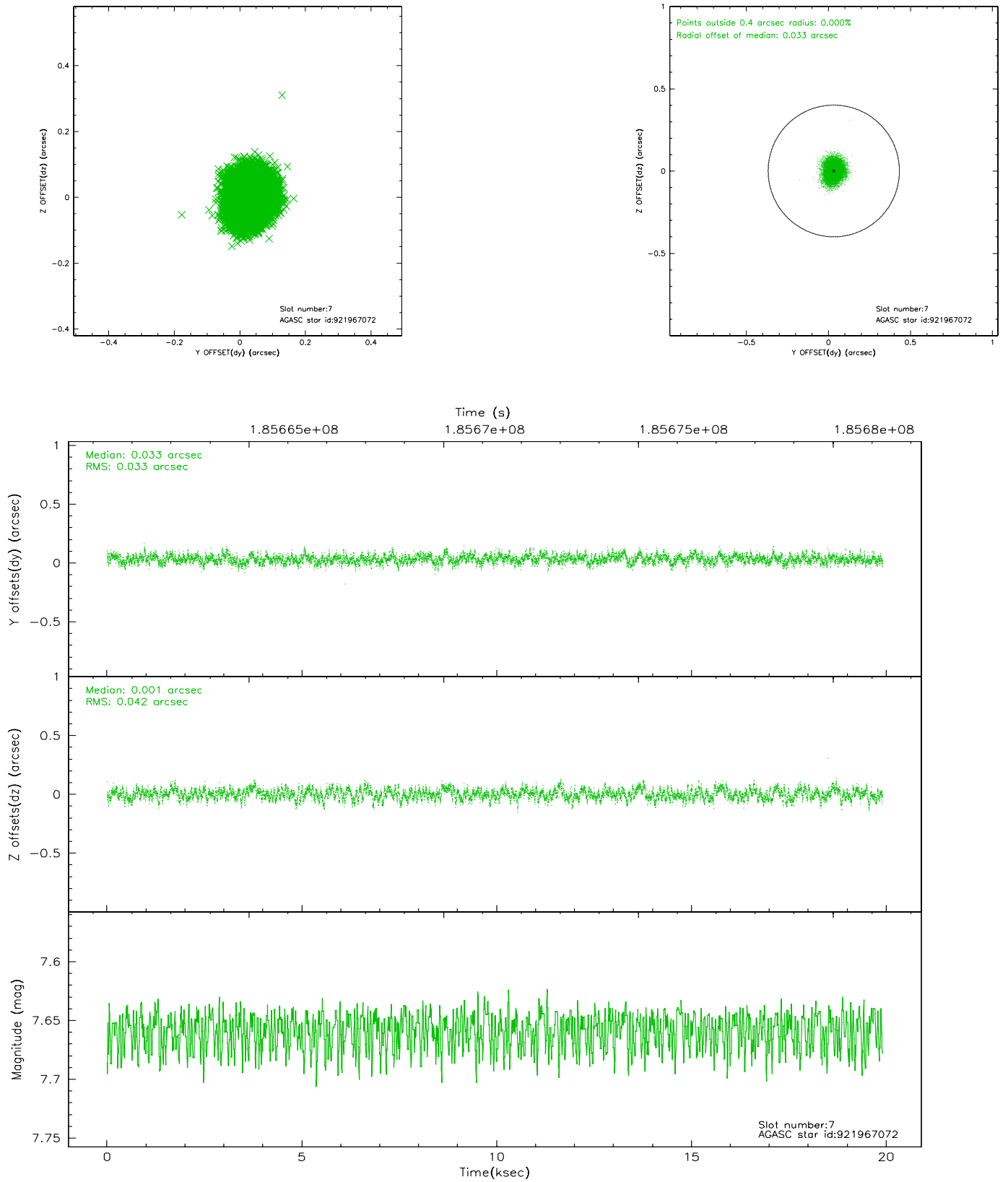
2.4.3 Slot 5



2.4.4 Slot 6

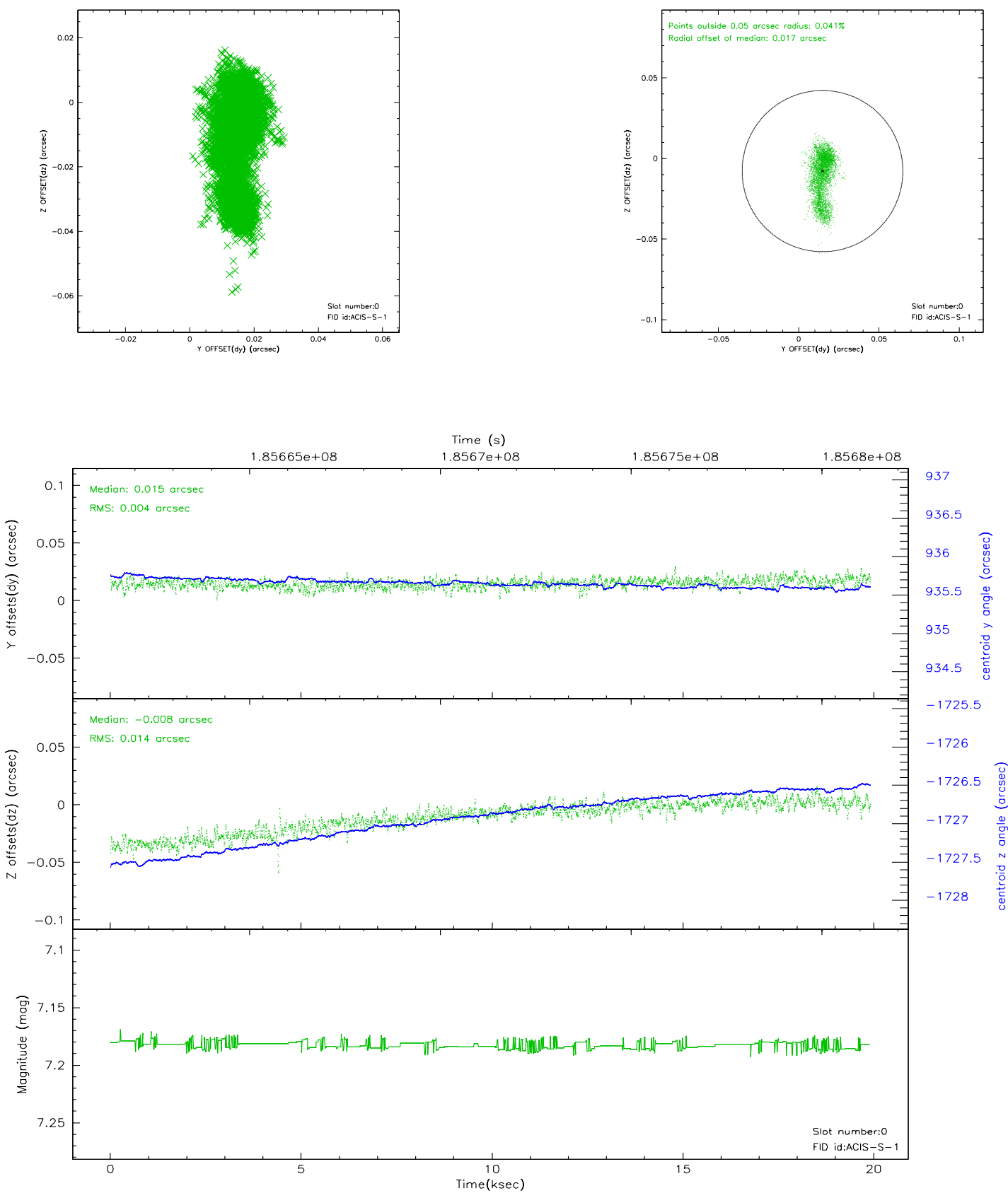


2.4.5 Slot 7

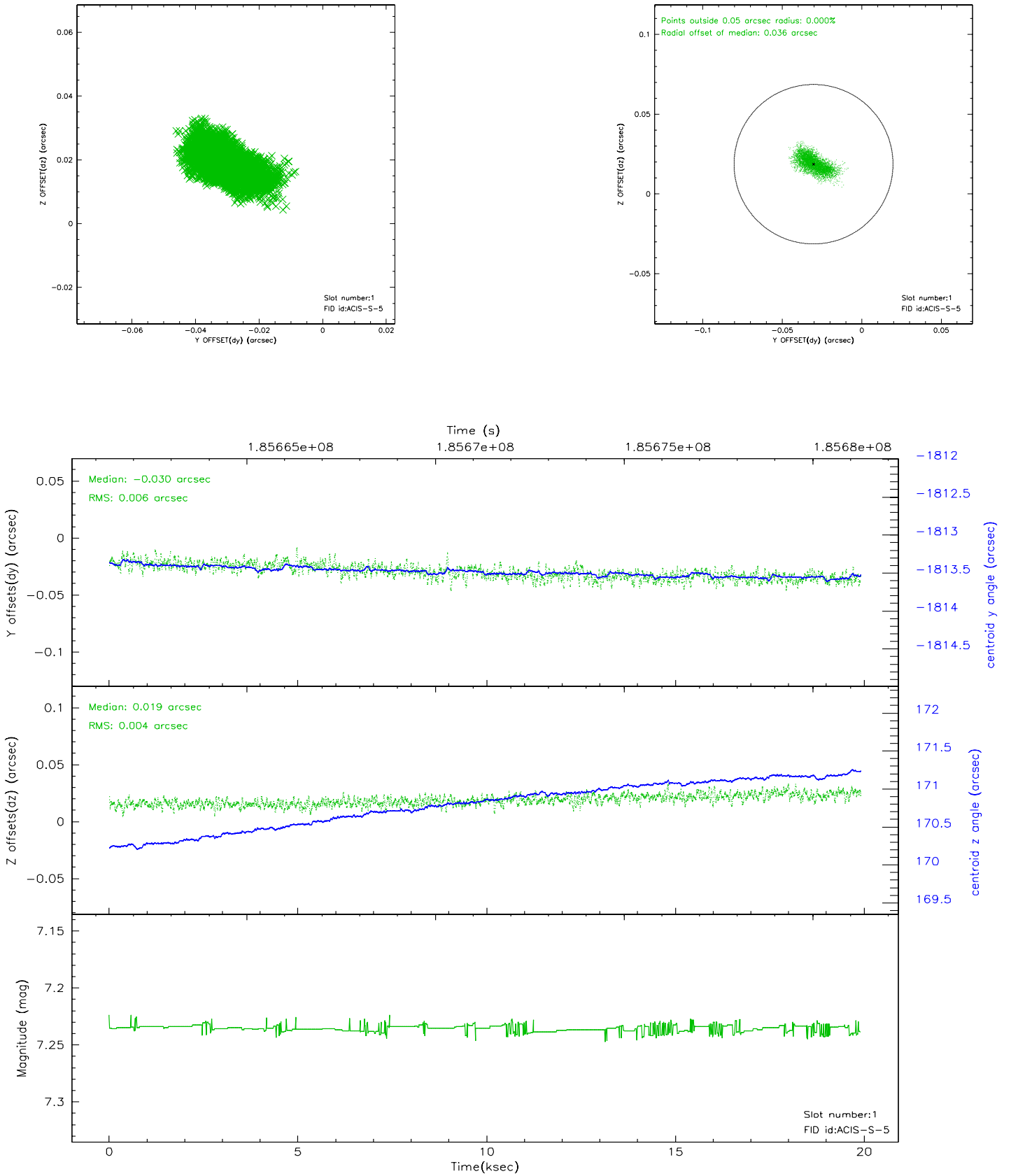


2.5 FID Slots

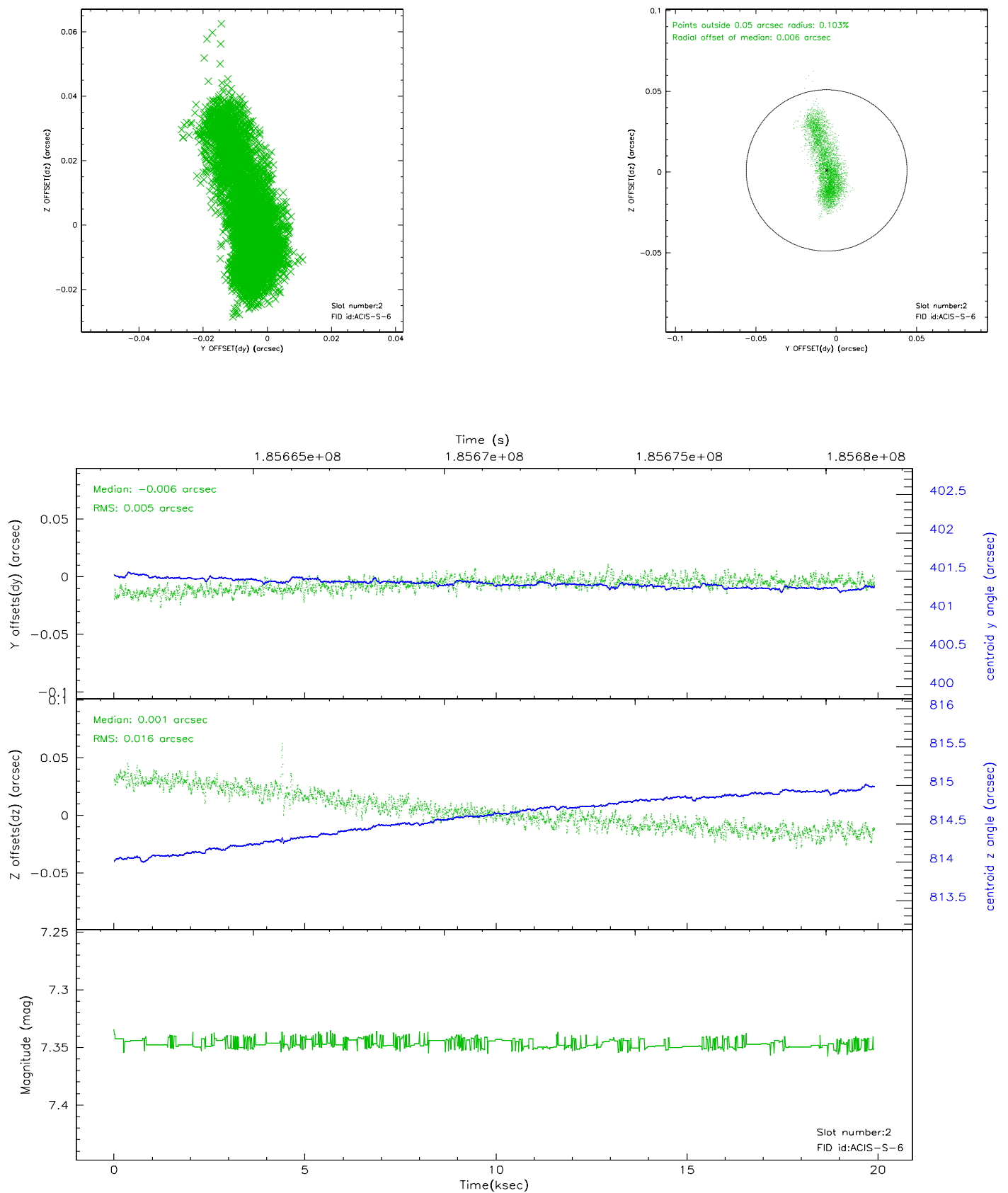
2.5.1 Slot 0



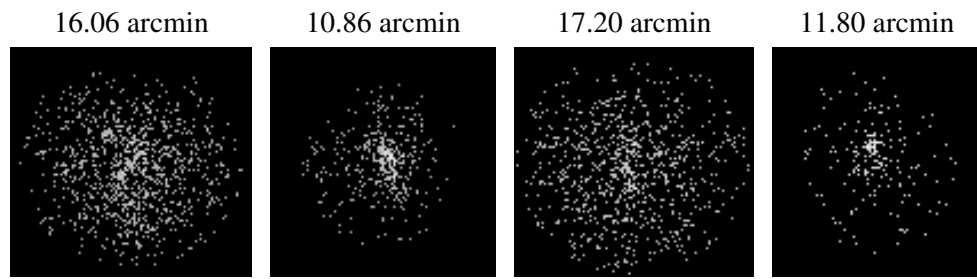
2.5.2 Slot 1



2.5.3 Slot 2



3 Point Sources



A Summary

A.1 Status

V&V Scientist	Beth Sundheim
V&V Date (YYYY-MM-DD)	2006.06.28
V&V Edition	1
V&V Disposition and Status	OK
V&V Charge Time	19.891

A.2 Comments

Roll constraint satisfied.