

V&V Reference Report

L2 ASCDS Version : 7.6.8

Observation 4072 - L2 Version 001
Chandra X-Ray Center

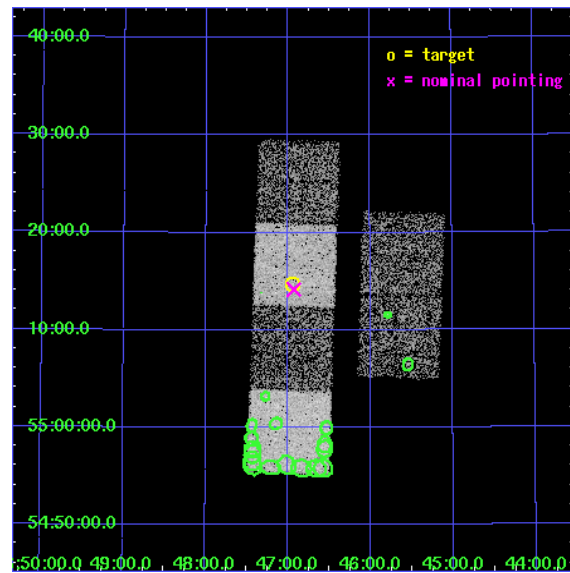
L2 Processing Date : Jul 6 2006

Contents

1	Front	2
2	OBI	3
2.1	OBI	3
2.1.1	Images	3
2.1.2	Bias	3
2.1.3	Parameters	4
2.1.4	Events	4
2.2	Compared Parameters	5
2.3	Aspect	6
2.4	Star Slots	9
2.4.1	Slot 3	9
2.4.2	Slot 4	10
2.4.3	Slot 5	11
2.4.4	Slot 6	12
2.4.5	Slot 7	13
2.5	FID Slots	14
2.5.1	Slot 0	14
2.5.2	Slot 1	15
2.5.3	Slot 2	16
3	Point Sources	17
A	Summary	18
A.1	Status	18
A.2	Comments	18

1 Front

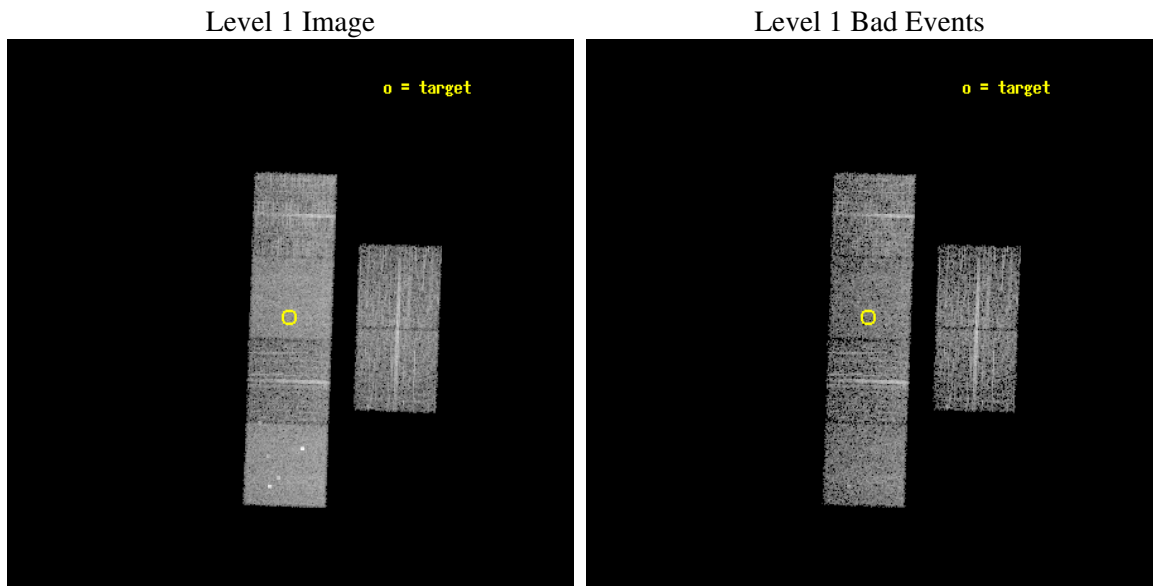
seq_num	700751
obs_id	4072
title	A CHANDRA SURVEY OF THE MOST LUMINOUS QUASARS AT $Z > 4$
observer	Dr. Cristian Vignali
object	PSS 1646+5514
dtcycle	0
cycle	P
ra_targ	251.735
dec_targ	55.246111
ra_nom	251.73260324896
dec_nom	55.236429183124
roll_nom	271.97708501233
revision	2
ontime	4905.5999817252
livetime	4843.4823209589
ontime2	4905.5999817252
ontime3	4905.5999817252
ontime5	4905.5999817252
ontime6	4905.5999817252
ontime7	4905.5999817252
ontime8	4905.5999817252
l2events	46575



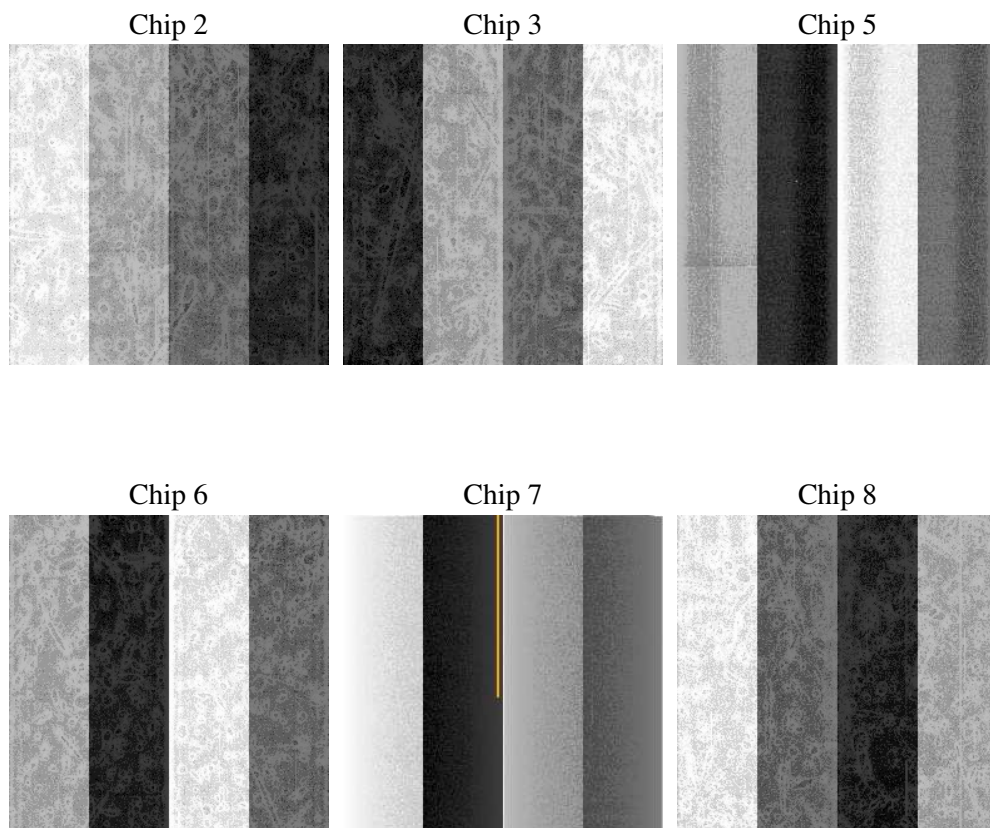
2 OBI

2.1 OBI

2.1.1 Images



2.1.2 Bias



2.1.3 Parameters

obi_num	0
ascdsver	7.6.8
caldsver	3.2.2
date	2006-07-06T03:51:00
revision	2

sched_exp_time	4944.000000
ontime	4910.1152005494
ontime2	4910.1152005494
ontime3	4910.1152005494
ontime5	4910.1152005494
ontime6	4910.1152005494
ontime7	4910.1152005494
ontime8	4910.1152005494
l1events	215124

2.1.4 Events

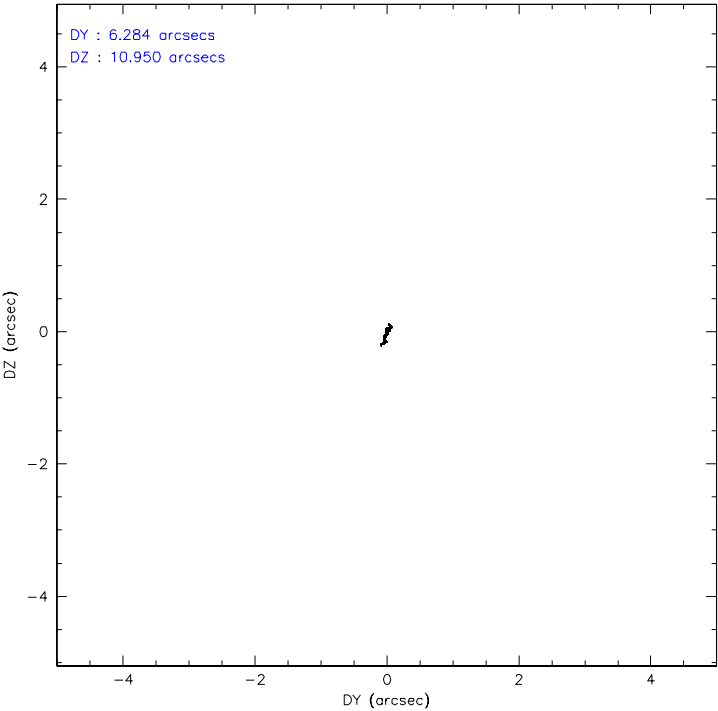
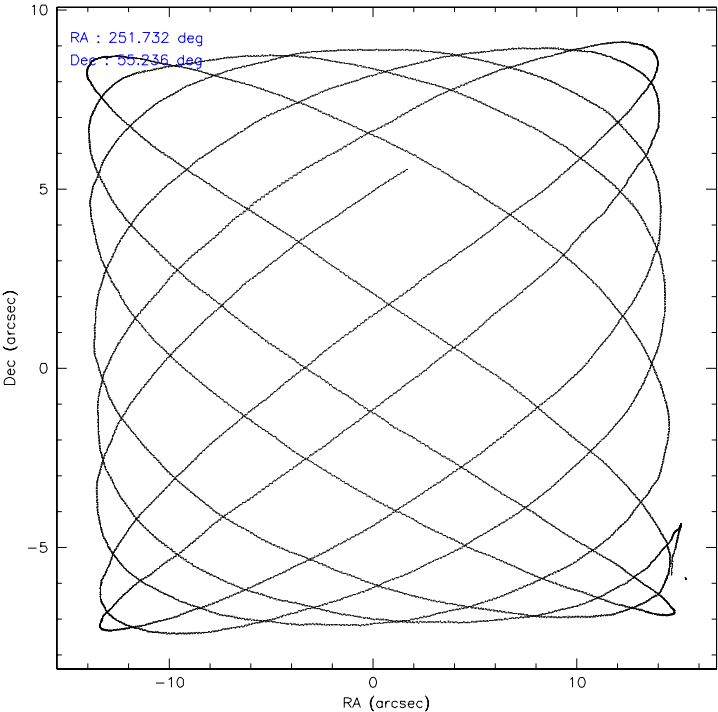
	ccd 2	ccd 3	ccd 5	ccd 6	ccd 7	ccd 8
level 1 events	29774	30408	46903	29677	40455	37907
rejected events	26165	26972	25724	26132	24984	30178
rejected %	87%	88%	54%	88%	61%	79%

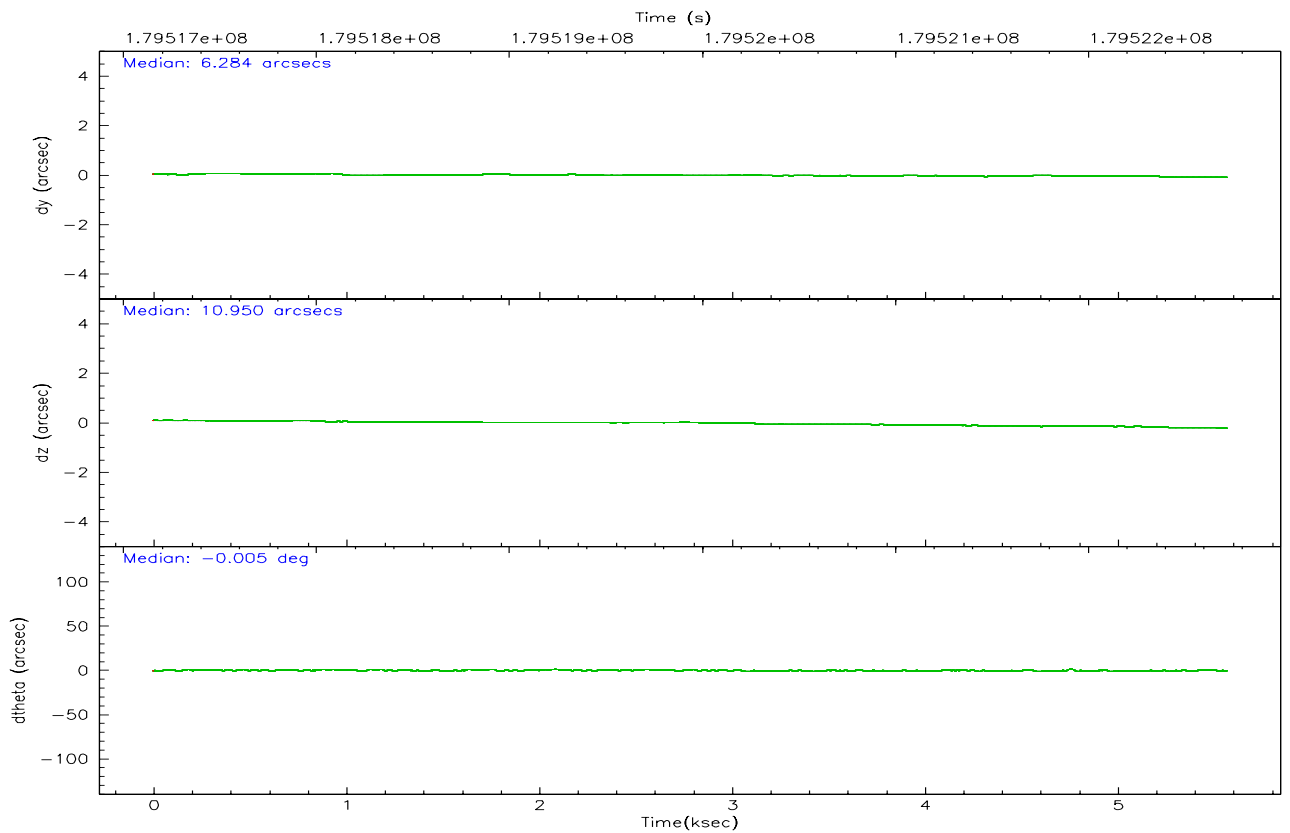
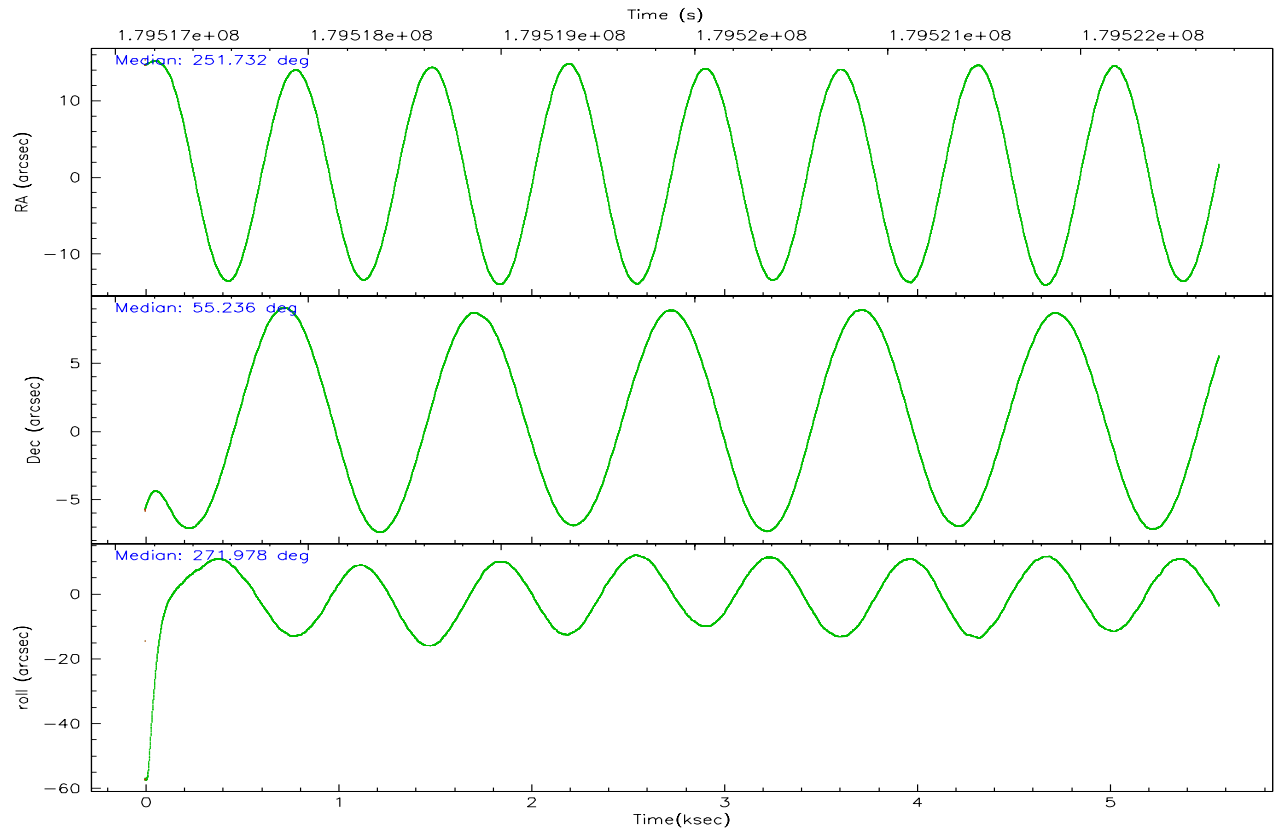
	ccd 2	ccd 3	ccd 5	ccd 6	ccd 7	ccd 8
grade 0 events	1630	1469	2753	1376	946	2401
	5%	4%	5%	4%	2%	6%
grade 1 events	19	19	108	19	18	30
	0%	0%	0%	0%	0%	0%
grade 2 events	682	671	6308	694	3770	1655
	2%	2%	13%	2%	9%	4%
grade 3 events	357	333	460	373	800	830
	1%	1%	0%	1%	1%	2%
grade 4 events	328	337	437	351	792	784
	1%	1%	0%	1%	1%	2%
grade 5 events	1184	1291	2190	1361	2693	1839
	3%	4%	4%	4%	6%	4%
grade 6 events	617	629	11257	757	9177	2062
	2%	2%	24%	2%	22%	5%
grade 7 events	24957	25659	23390	24746	22259	28306
	83%	84%	49%	83%	55%	74%

2.2 Compared Parameters

Parameter	Planned	Actual	Parameter	Planned	Actual
Instrument	ACIS	ACIS	Obspar format version number	6	6
Detector	ACIS-235678	ACIS-235678	Obspar file type	PREDICTED	ACTUAL
Grating	NONE	NONE	Obspar update status	NONE	UPDATED
Data mode	FAINT	FAINT	On-chip summing requested	N	N
Observation mode	POINTING	POINTING	Subarray requested	NONE	NONE
Pointing RA	251.706747	251.732603248959	Alternating exposures requested	N	N
Pointing Dec	55.259442	55.23642918312398	Primary exposure time	0.000000	3.2
Pointing Roll	271.841841	271.977085012326			
SIM focus pos (mm)	-0.684267	-0.6828225247311905			
SIM defocus (mm)	0	0.001444936568705701			
SIM translation stage pos (mm)	-190.132523	-190.1400660498719			
SIM translation stage offset (mm)	0	0.00754346686406393			
Observation start time	179517773.184000	179516592.53783			
Observation start date	2003-09-09T18:01:49	2003-09-09T17:43:12			
Observation end time	179522717.184000	179523064.38811			
Observation end date	2003-09-09T19:24:13	2003-09-09T19:31:04			
Read mode	TIMED	TIMED			

2.3 Aspect



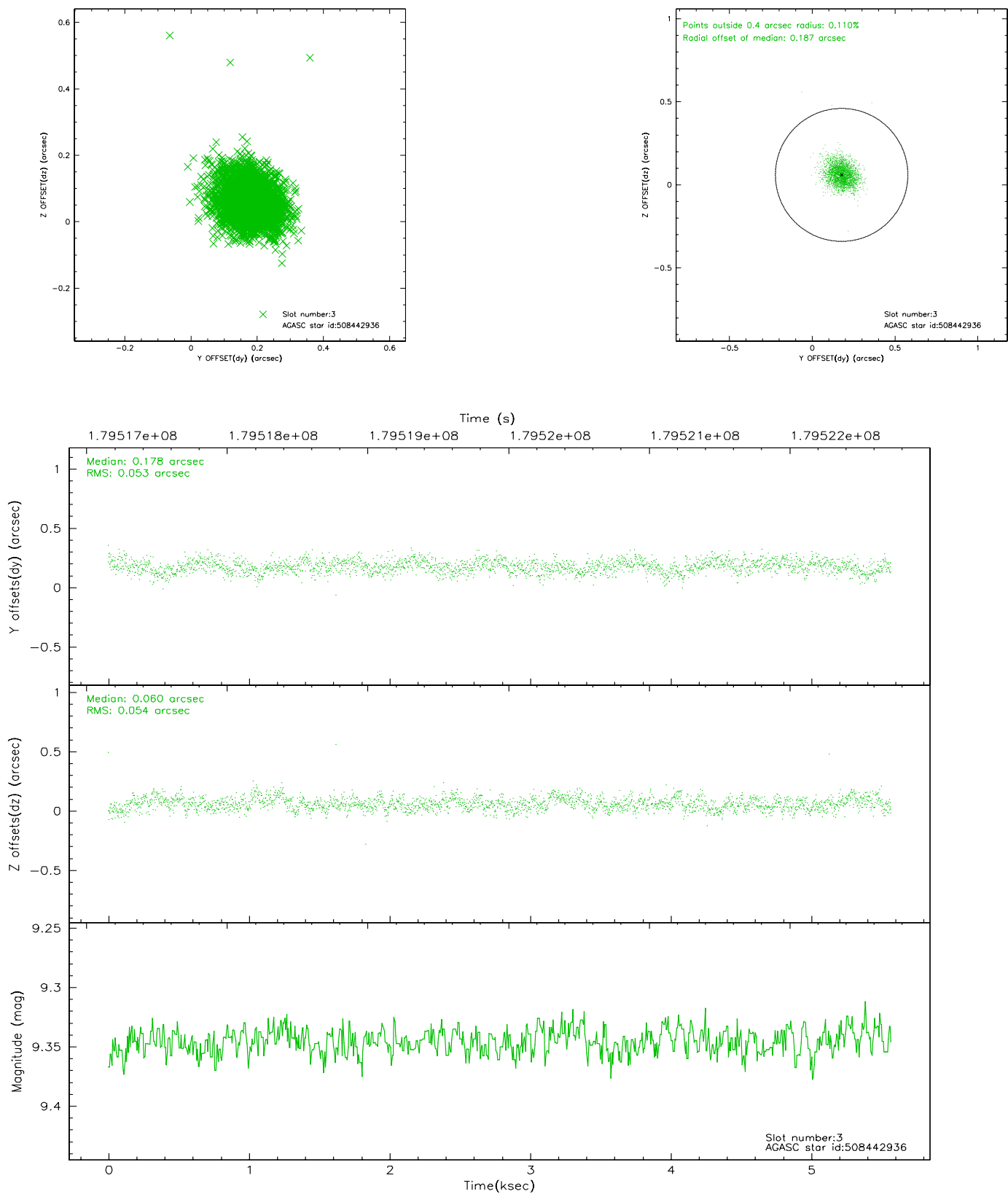


Slot Statistics

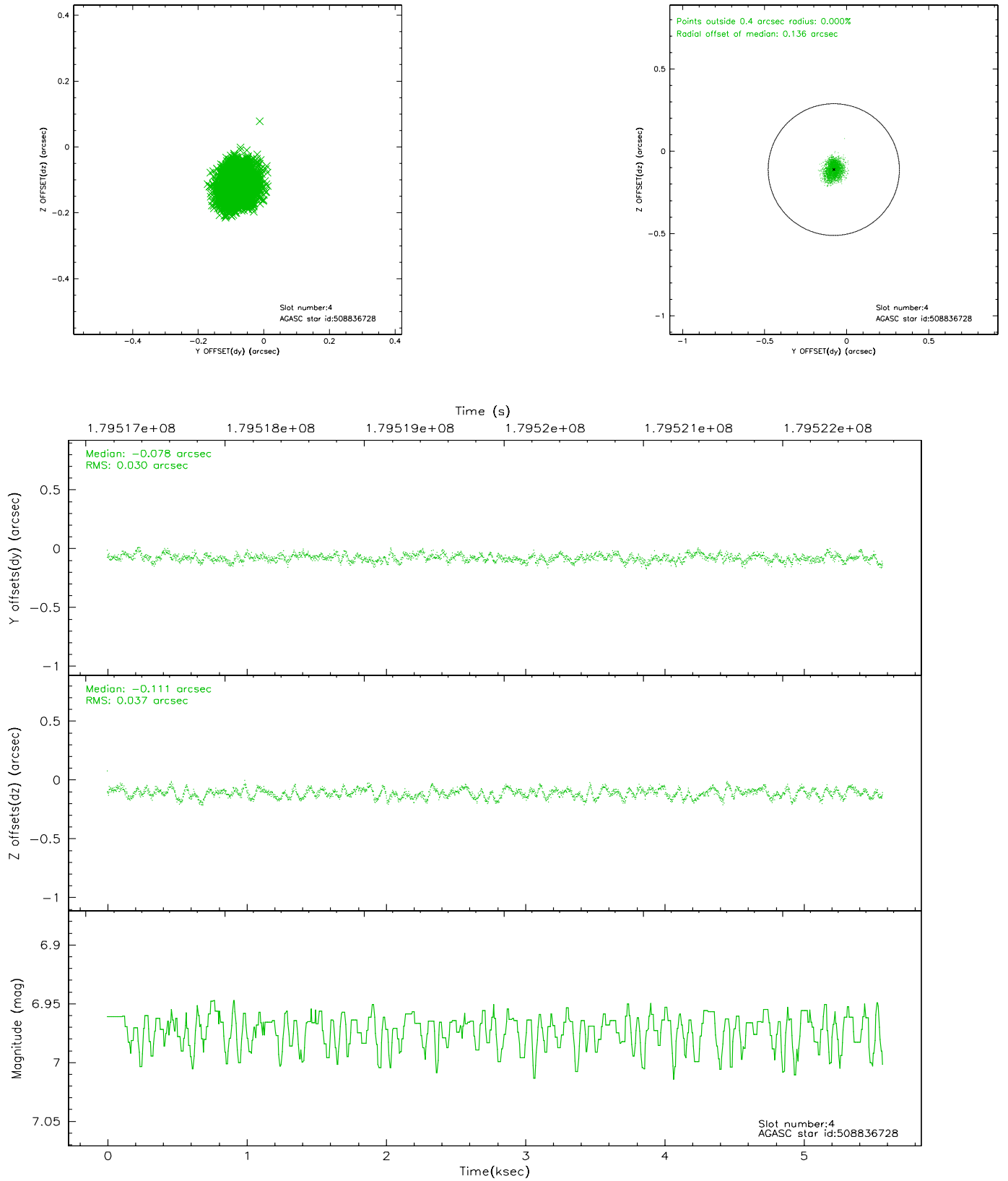
slot	status	id	mag	n_pts	med_dy	med_dz	dr1	dr2	ra	dec	mean_y	mean_z
0	FID	ACIS-S-2	7.10	1359	-0.041	0.017	0.007	0.011	0.000000	0.000000	-759.03	-1732.18
1	FID	ACIS-S-4	7.20	1359	0.012	0.015	0.005	0.011	0.000000	0.000000	2153.79	175.22
2	FID	ACIS-S-5	7.23	1359	-0.003	-0.023	0.007	0.011	0.000000	0.000000	-1810.47	170.04
3	GUIDE	508442936	9.35	2717	0.178	0.060	0.079	0.127	251.652449	54.686627	2057.56	-178.90
4	GUIDE	508836728	6.97	2717	-0.078	-0.111	0.051	0.079	251.715220	55.409983	-540.45	34.82
5	GUIDE	508838472	7.22	2718	0.004	-0.034	0.055	0.088	251.408850	55.313946	-217.10	-603.43
6	GUIDE	508840536	9.35	2718	-0.033	0.007	0.075	0.124	251.197263	55.885789	-2290.66	-955.54
7	GUIDE	508841552	8.20	2711	-0.072	0.078	0.065	0.100	251.402020	55.773623	-1872.18	-557.18

2.4 Star Slots

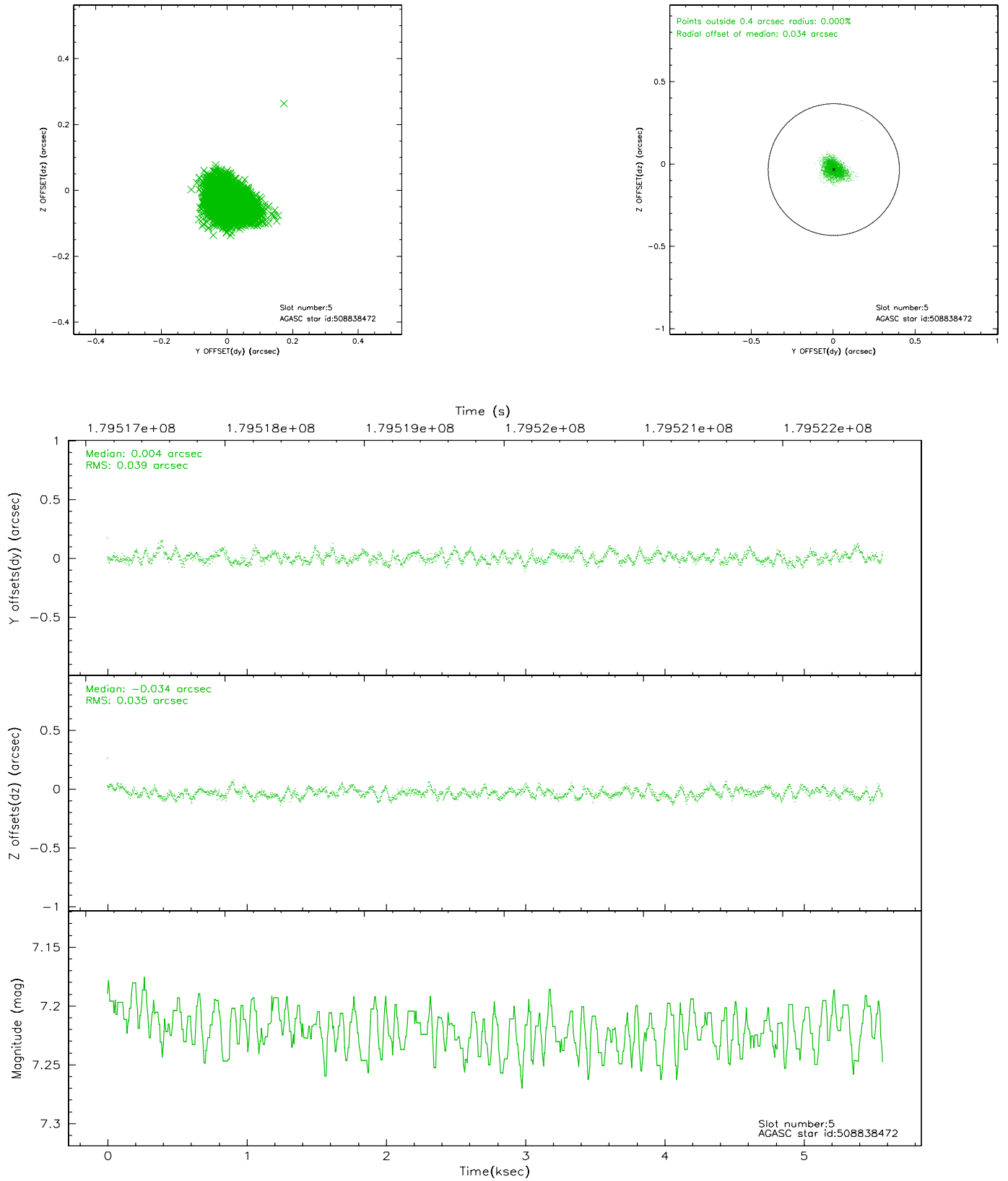
2.4.1 Slot 3



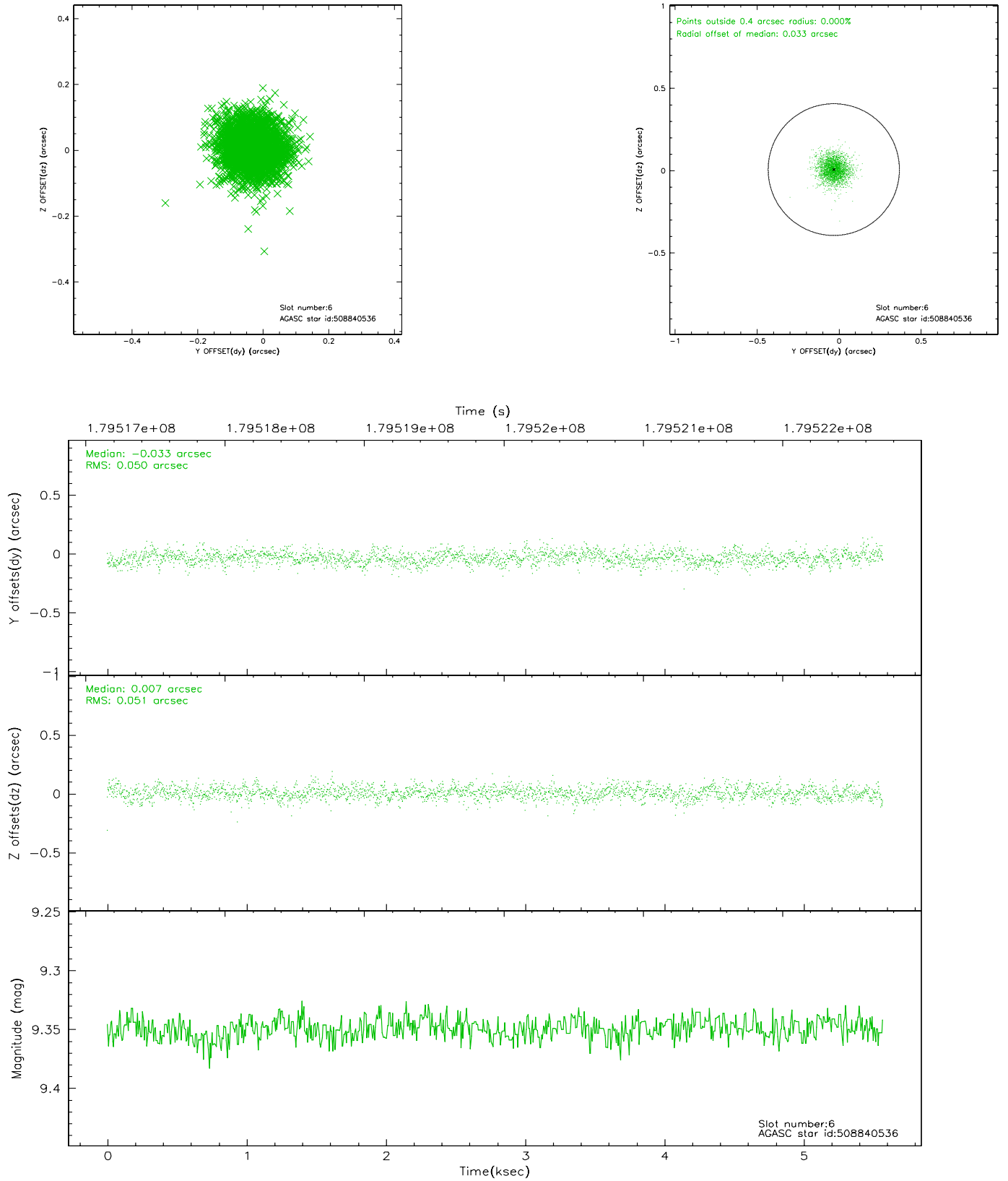
2.4.2 Slot 4



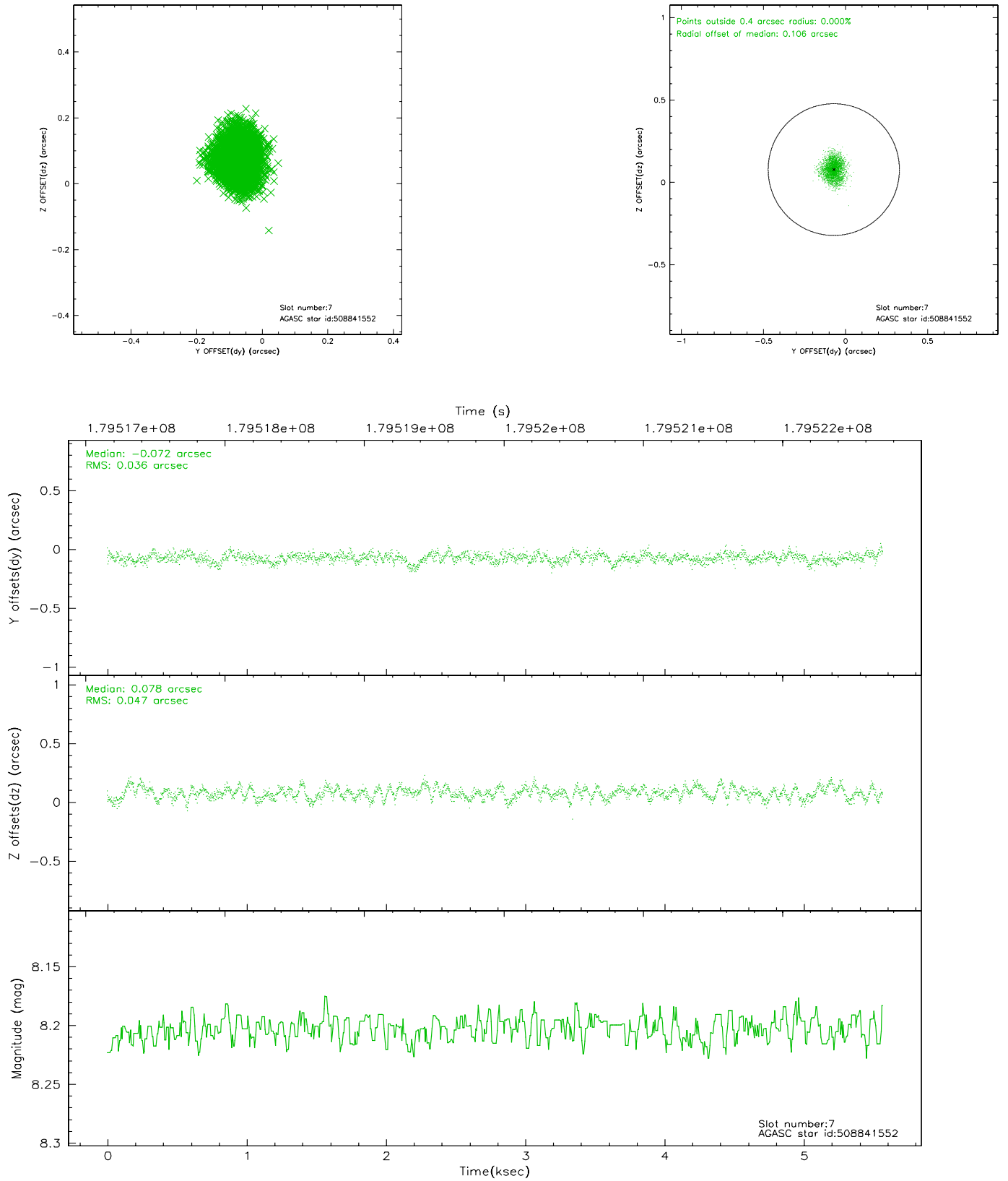
2.4.3 Slot 5



2.4.4 Slot 6

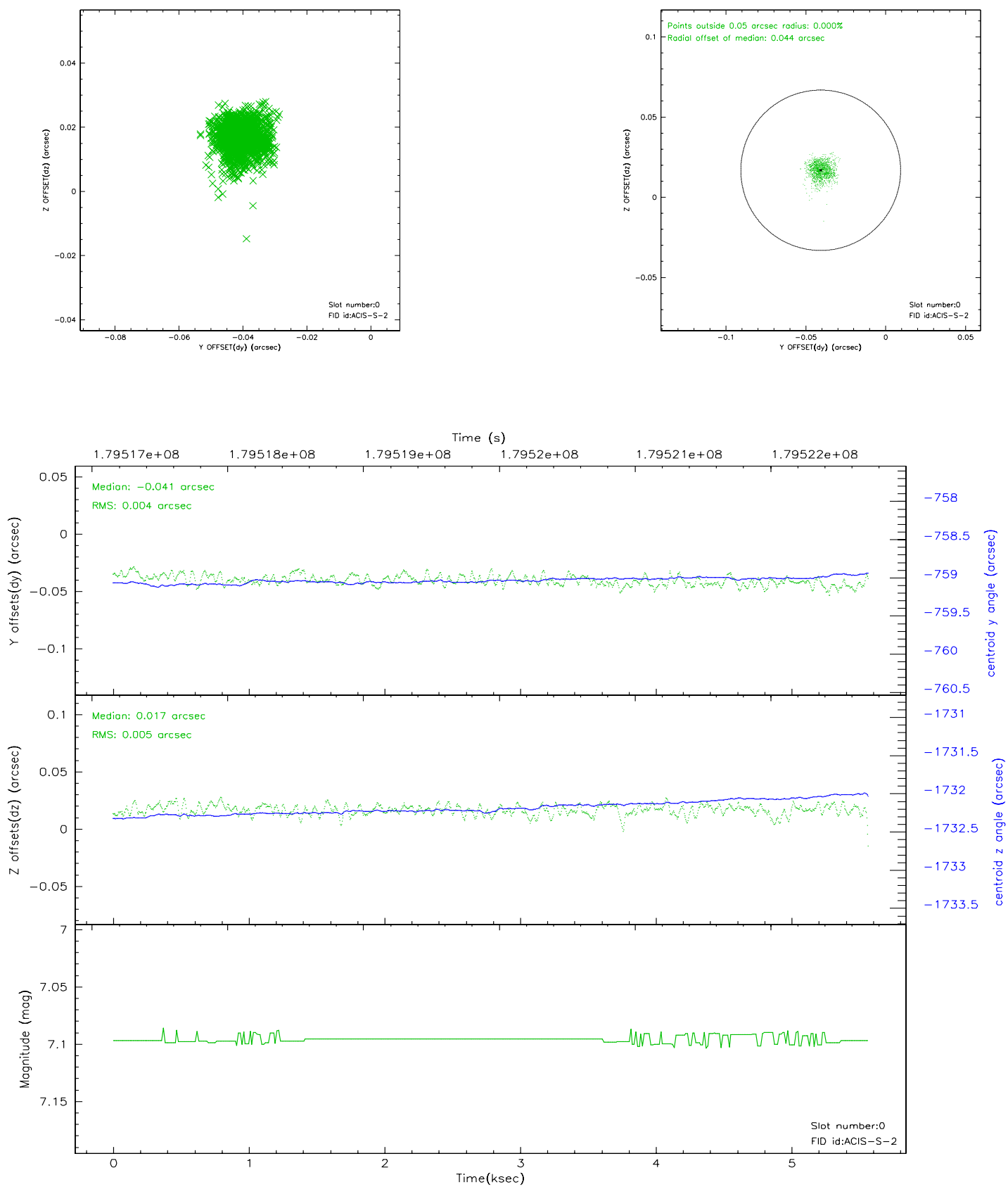


2.4.5 Slot 7

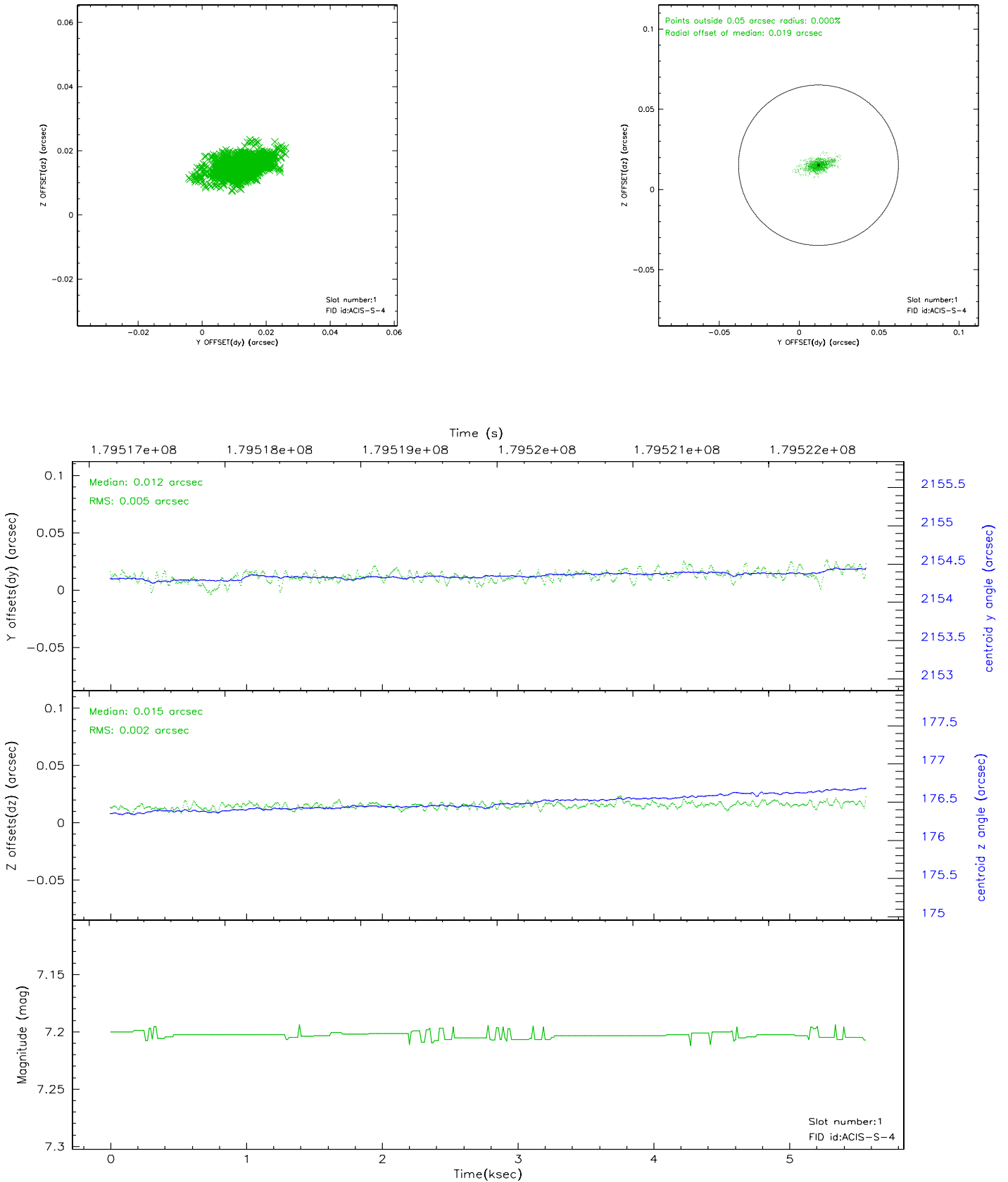


2.5 FID Slots

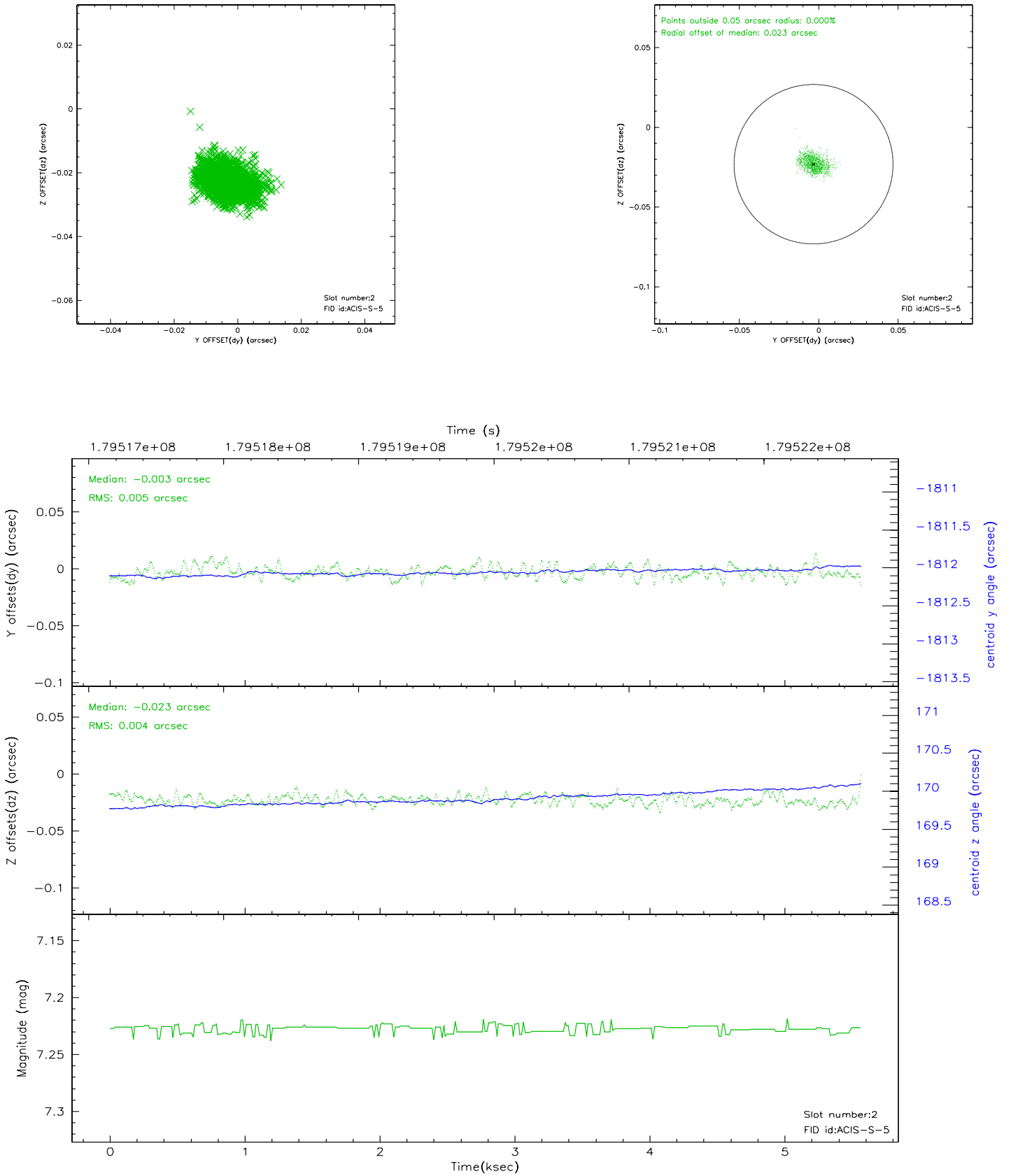
2.5.1 Slot 0



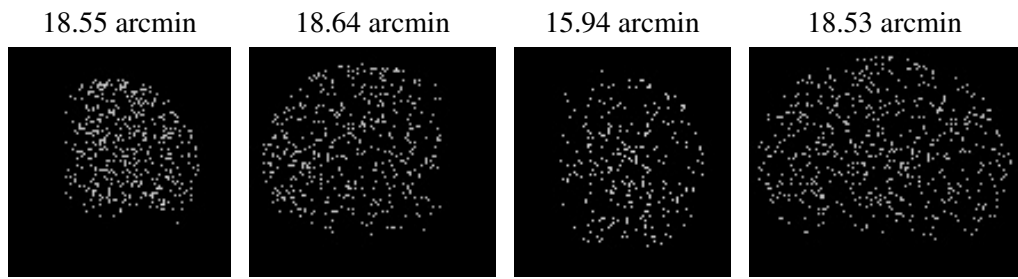
2.5.2 Slot 1



2.5.3 Slot 2



3 Point Sources



A Summary

A.1 Status

V&V Scientist	Beth Sundheim
V&V Date (YYYY-MM-DD)	2006.07.06
V&V Edition	1
V&V Disposition and Status	OK
V&V Charge Time	4.908

A.2 Comments