

# V&V Reference Report

## L2 ASCDS Version : 7.6.9

Observation 4068 - L2 Version 001  
Chandra X-Ray Center

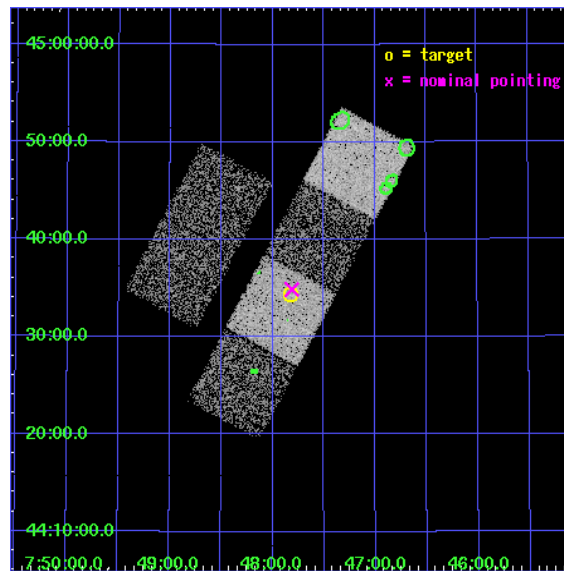
L2 Processing Date : Oct 15 2006

## Contents

<b>1</b>	<b>Front</b>	<b>2</b>
<b>2</b>	<b>OBI</b>	<b>3</b>
2.1	OBI . . . . .	3
2.1.1	Images . . . . .	3
2.1.2	Bias . . . . .	3
2.1.3	Parameters . . . . .	4
2.1.4	Events . . . . .	4
2.2	Compared Parameters . . . . .	5
2.3	Aspect . . . . .	6
2.4	Star Slots . . . . .	9
2.4.1	Slot 3 . . . . .	9
2.4.2	Slot 4 . . . . .	10
2.4.3	Slot 5 . . . . .	11
2.4.4	Slot 6 . . . . .	12
2.4.5	Slot 7 . . . . .	13
2.5	FID Slots . . . . .	14
2.5.1	Slot 0 . . . . .	14
2.5.2	Slot 1 . . . . .	15
2.5.3	Slot 2 . . . . .	16
<b>3</b>	<b>Point Sources</b>	<b>17</b>
<b>A</b>	<b>Summary</b>	<b>18</b>
A.1	Status . . . . .	18
A.2	Comments . . . . .	18

# 1 Front

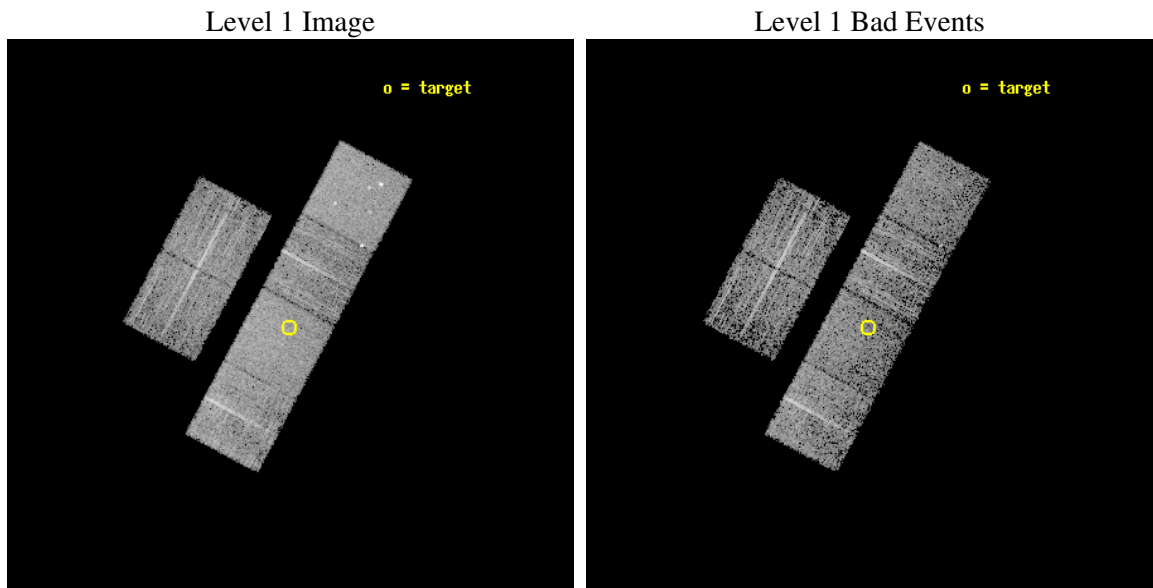
seq_num	700747
obs_id	4068
title	A CHANDRA SURVEY OF THE MOST LUMINOUS QUASARS AT $Z > 4$
observer	Dr. Cristian Vignali
object	PSS 0747+4434
dtcycle	0
cycle	P
ra_targ	116.957083
dec_targ	44.57225
ra_nom	116.95288121305
dec_nom	44.58142481557
roll_nom	118.13924230875
revision	3
ontime	4591.9999828935
livetime	4533.8533141396
ontime2	4591.9999828935
ontime3	4591.9999828935
ontime5	4591.9999828935
ontime6	4591.9999828935
ontime7	4591.9999828935
ontime8	4588.7590126097
l2events	42158



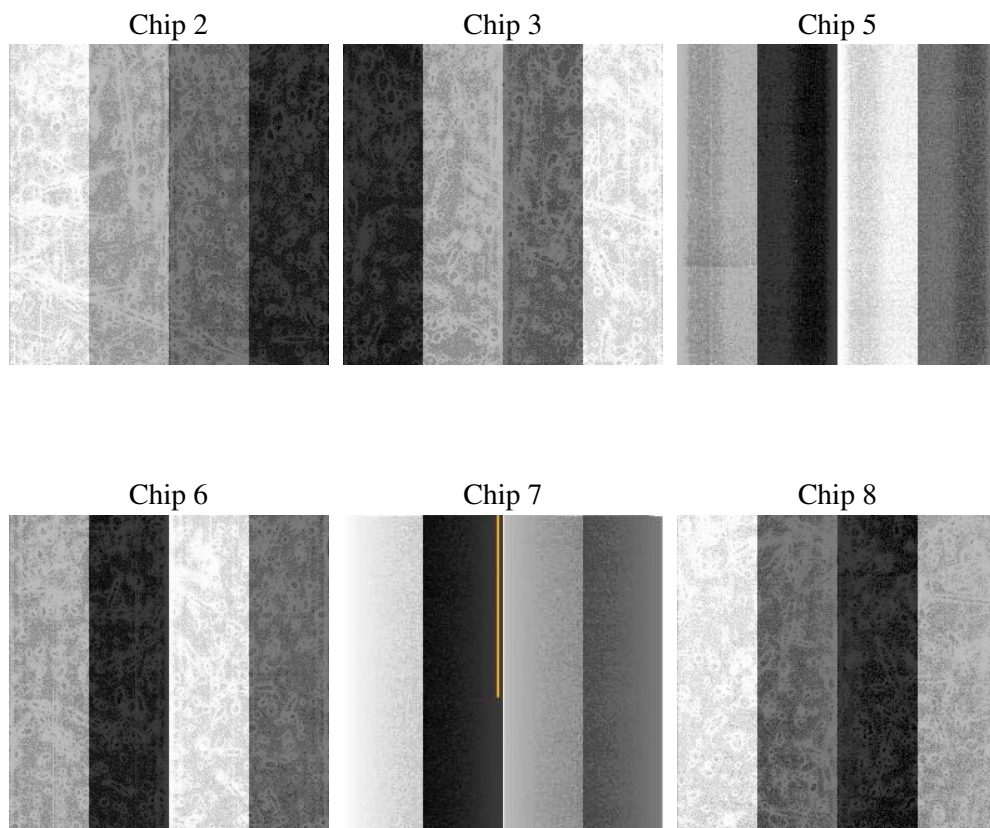
## 2 OBI

### 2.1 OBI

#### 2.1.1 Images



#### 2.1.2 Bias



### 2.1.3 Parameters

obi_num	0
ascdsver	7.6.9
caldbver	3.2.3
date	2006-10-15T04:18:55
revision	3

sched_exp_time	4839.263000
ontime	4598.9881217778
ontime2	4598.9881416559
ontime3	4598.9881217778
ontime5	4598.9881416857
ontime6	4598.9881217778
ontime7	4598.9881217778
ontime8	4595.7470618188
l1events	200411

### 2.1.4 Events

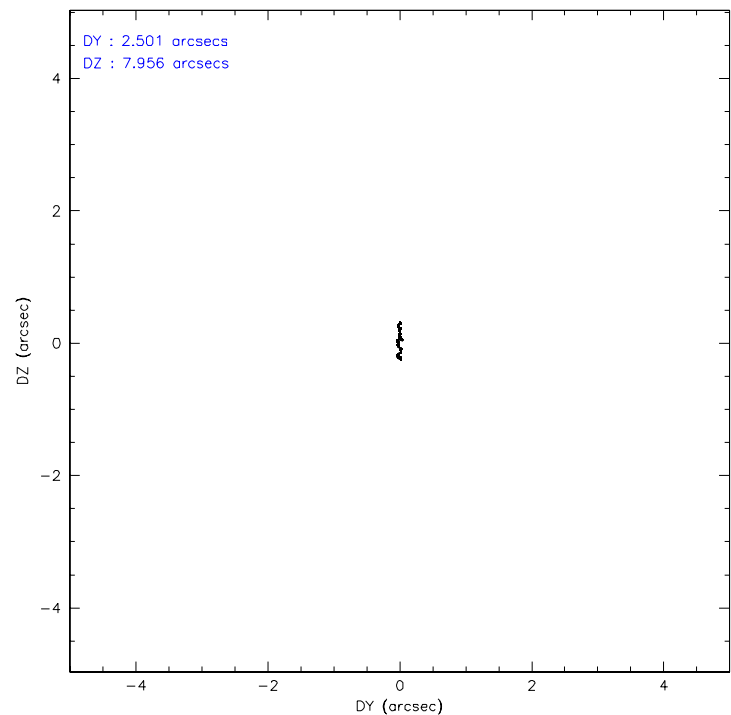
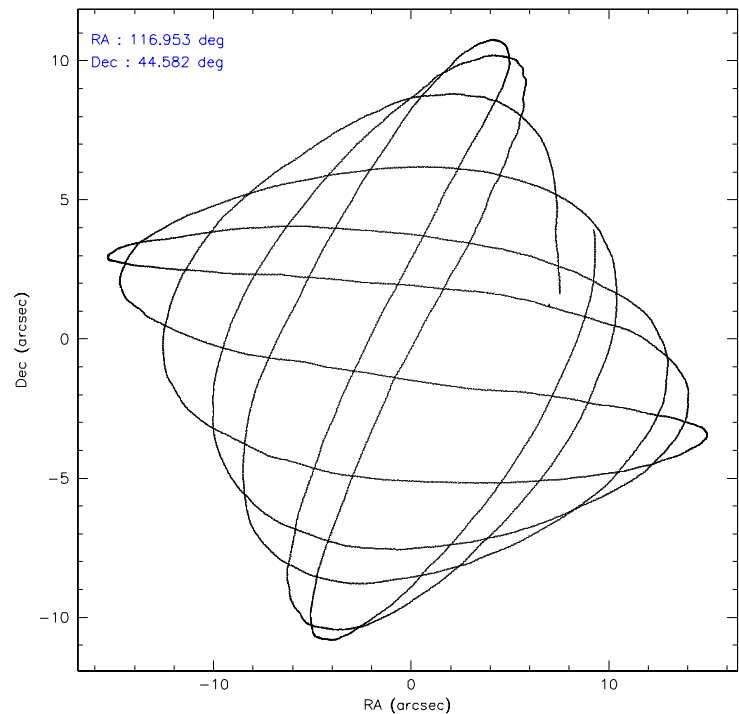
	ccd 2	ccd 3	ccd 5	ccd 6	ccd 7	ccd 8
level 1 events	29421	26446	40969	29244	37402	36929
rejected events	26111	23342	22664	25919	23112	30058
rejected %	88%	88%	55%	88%	61%	81%

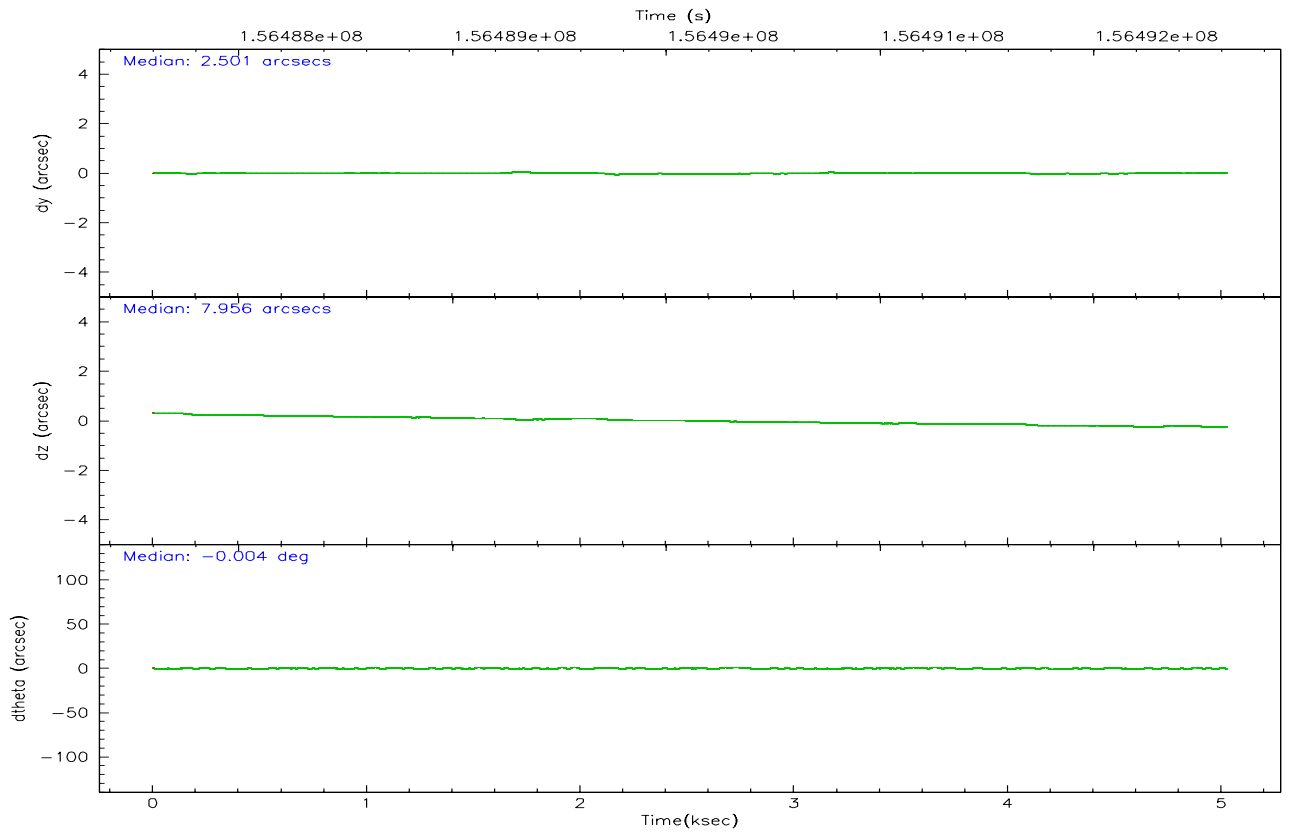
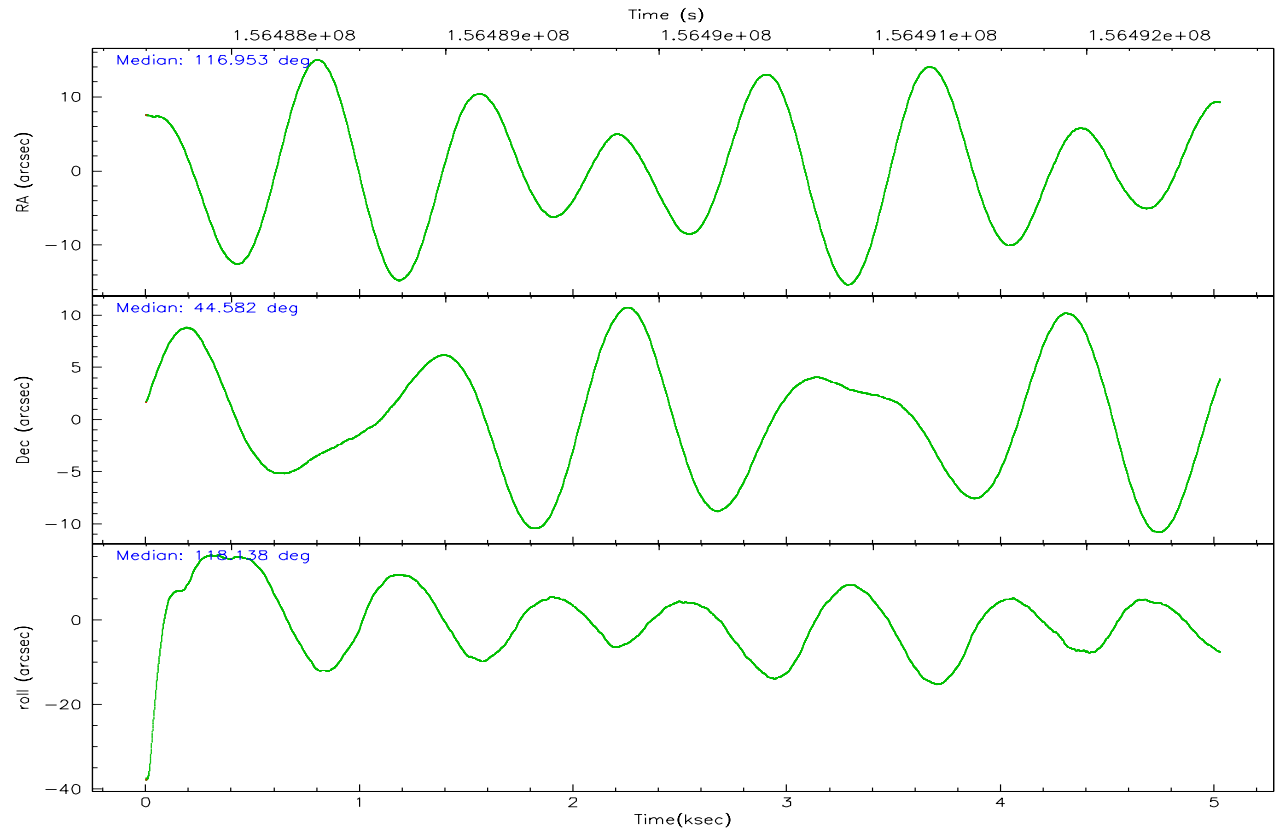
	ccd 2	ccd 3	ccd 5	ccd 6	ccd 7	ccd 8
grade 0 events	1487	1314	1631	1343	842	2302
	5%	4%	3%	4%	2%	6%
grade 1 events	11	24	78	11	25	36
	0%	0%	0%	0%	0%	0%
grade 2 events	661	617	5648	653	3568	1381
	2%	2%	13%	2%	9%	3%
grade 3 events	322	284	464	326	738	816
	1%	1%	1%	1%	1%	2%
grade 4 events	315	318	388	313	754	797
	1%	1%	0%	1%	2%	2%
grade 5 events	1112	1180	1971	1262	2421	1524
	3%	4%	4%	4%	6%	4%
grade 6 events	529	574	10203	695	8421	1578
	1%	2%	24%	2%	22%	4%
grade 7 events	24984	22135	20586	24641	20633	28495
	84%	83%	50%	84%	55%	77%

## 2.2 Compared Parameters

Parameter	Planned	Actual	Parameter	Planned	Actual
Instrument	ACIS	ACIS	Obspar format version number	6	6
Detector	ACIS-235678	ACIS-235678	Obspar file type	PREDICTED	ACTUAL
Grating	NONE	NONE	Obspar update status	NONE	UPDATED
Data mode	FAINT	FAINT	Number of optional ACIS chips dropped	0	0
Observation mode	POINTING	POINTING	On-chip summing requested	N	N
Pointing RA	116.985604	116.95288121305	Subarray requested	NONE	NONE
Pointing Dec	44.567384	44.58142481557036	Alternating exposures requested	N	N
Pointing Roll	117.959757	118.1392423087451	Primary exposure time	0.000000	3.2
SIM focus pos (mm)	-0.684267	-0.6828225247311905			
SIM defocus (mm)	0	0.001444936568705701			
SIM translation stage pos (mm)	-190.132523	-190.1425803651734			
SIM translation stage offset (mm)	0	0.01005778216563158			
Observation start time	156487788.184000	156487189.83885			
Observation start date	2002-12-17T04:48:44	2002-12-17T04:39:49			
Observation end time	156492628.184000	156492942.65159			
Observation end date	2002-12-17T06:09:24	2002-12-17T06:15:42			
Read mode	TIMED	TIMED			

2.3 Aspect





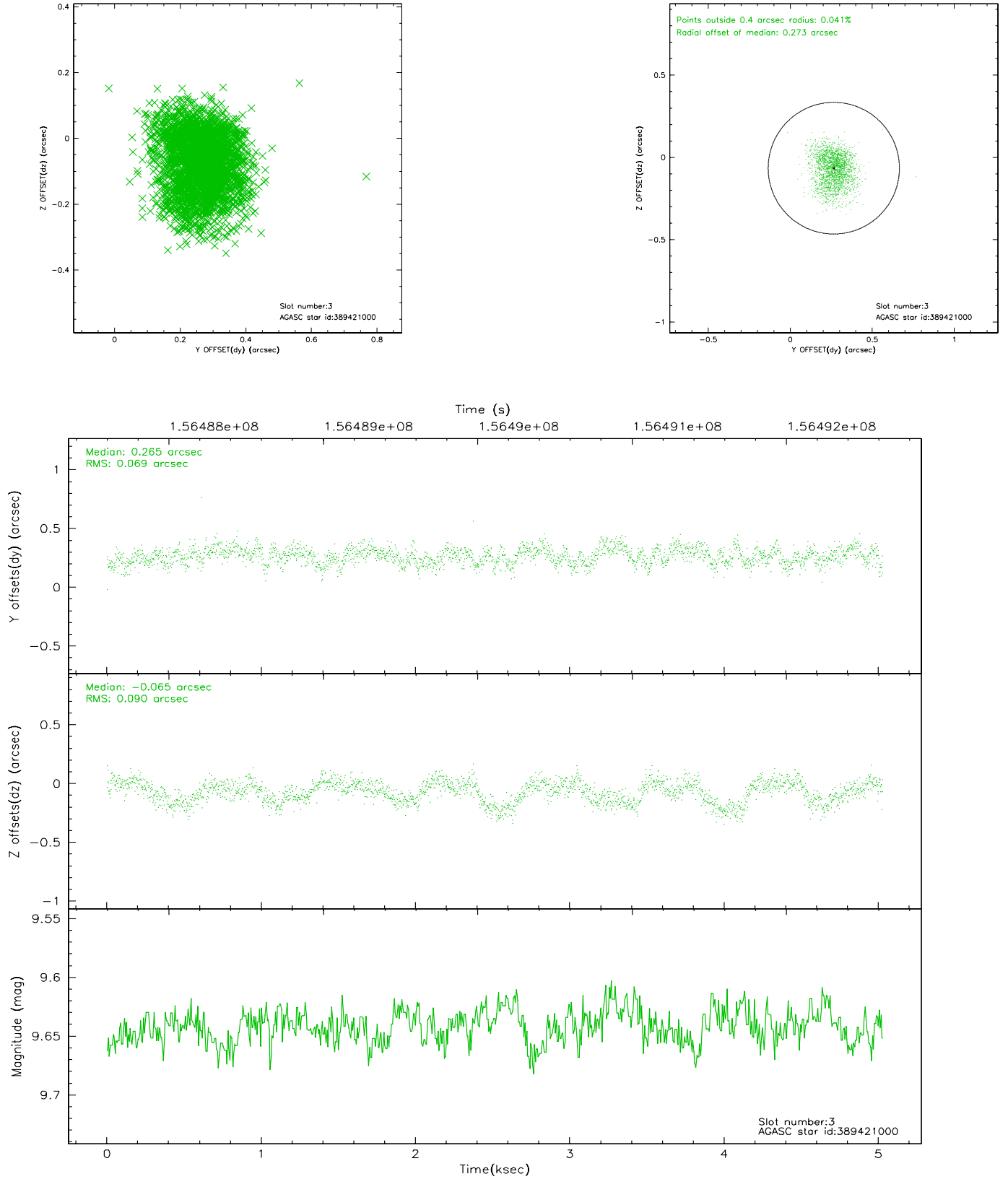
### Slot Statistics

slot	status	id	mag	n_pts	med_dy	med_dz	dr1	dr2	ra	dec	mean_y	mean_z
0	FID	ACIS-S-2	7.11	1227	0.001	0.022	0.007	0.011	0.000000	0.000000	-755.14	-1729.07
1	FID	ACIS-S-4	7.20	1227	-0.070	-0.007	0.005	0.008	0.000000	0.000000	2157.54	178.12
2	FID	ACIS-S-5	7.24	1227	0.037	-0.007	0.006	0.011	0.000000	0.000000	-1806.37	173.19
3	GUIDE	389421000	9.64	2449	0.265	-0.065	0.121	0.194	116.942078	44.105834	-1415.42	879.67
4	GUIDE	389422168	8.80	2452	0.036	-0.058	0.099	0.155	116.329594	44.574758	816.78	1471.98
5	GUIDE	389424120	8.24	2452	0.068	0.025	0.089	0.141	117.387966	44.841855	393.08	-1369.64
6	GUIDE	446564856	9.18	2450	-0.053	-0.020	0.107	0.176	116.831611	45.060649	1751.72	-486.05
7	GUIDE	446564488	9.63	2427	-0.318	0.154	0.289	0.438	116.671617	45.203570	2397.33	-369.77

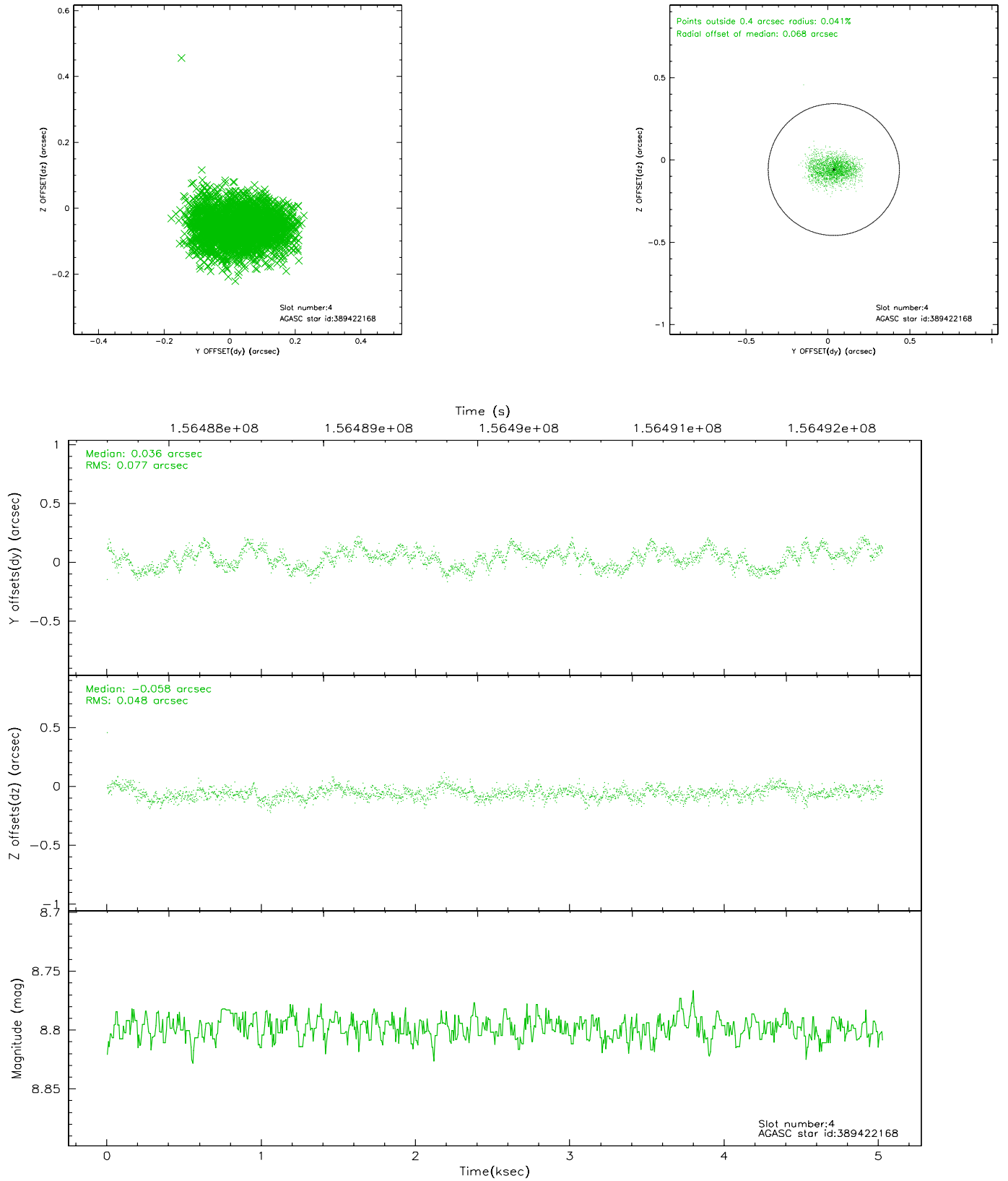


## 2.4 Star Slots

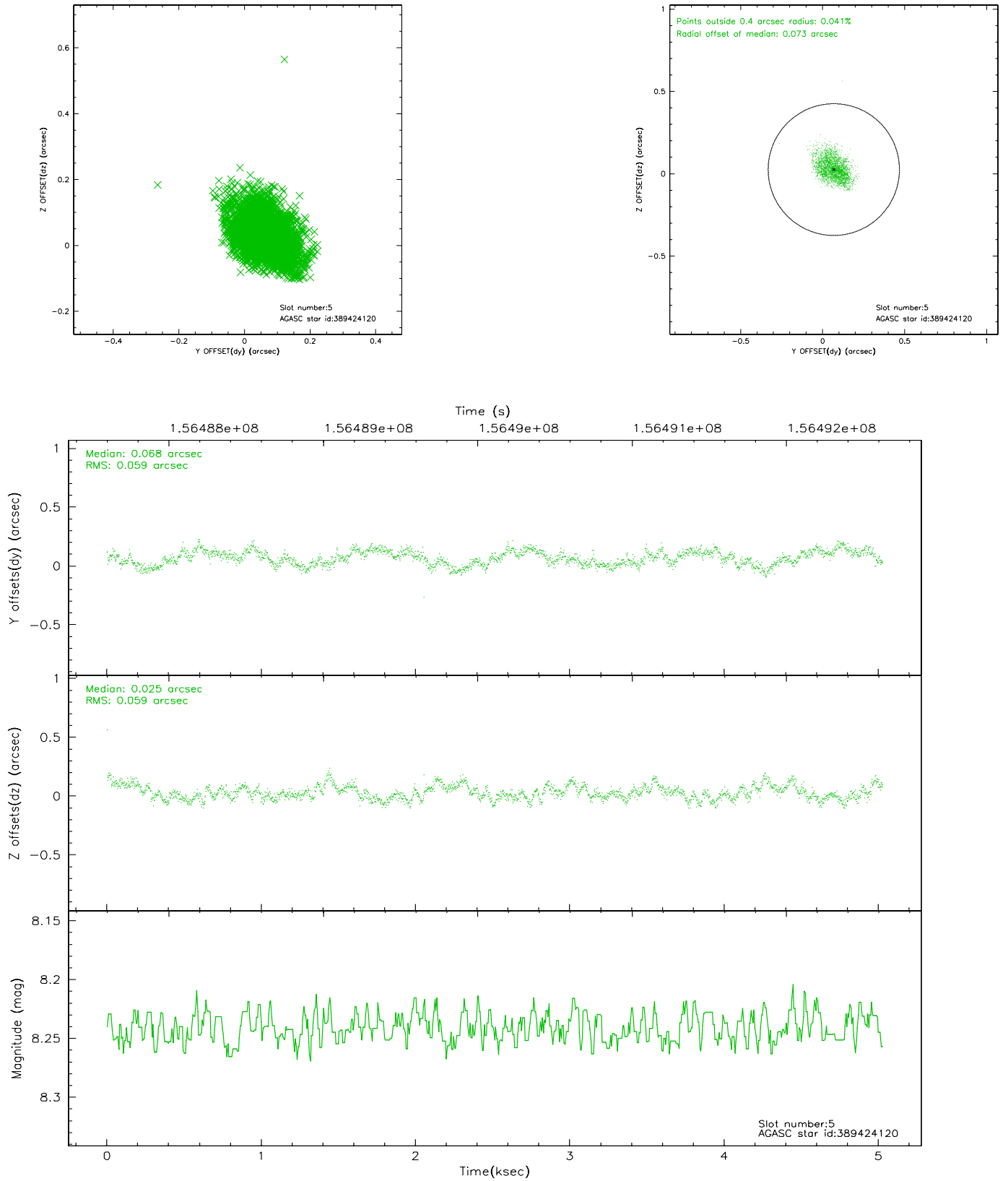
### 2.4.1 Slot 3



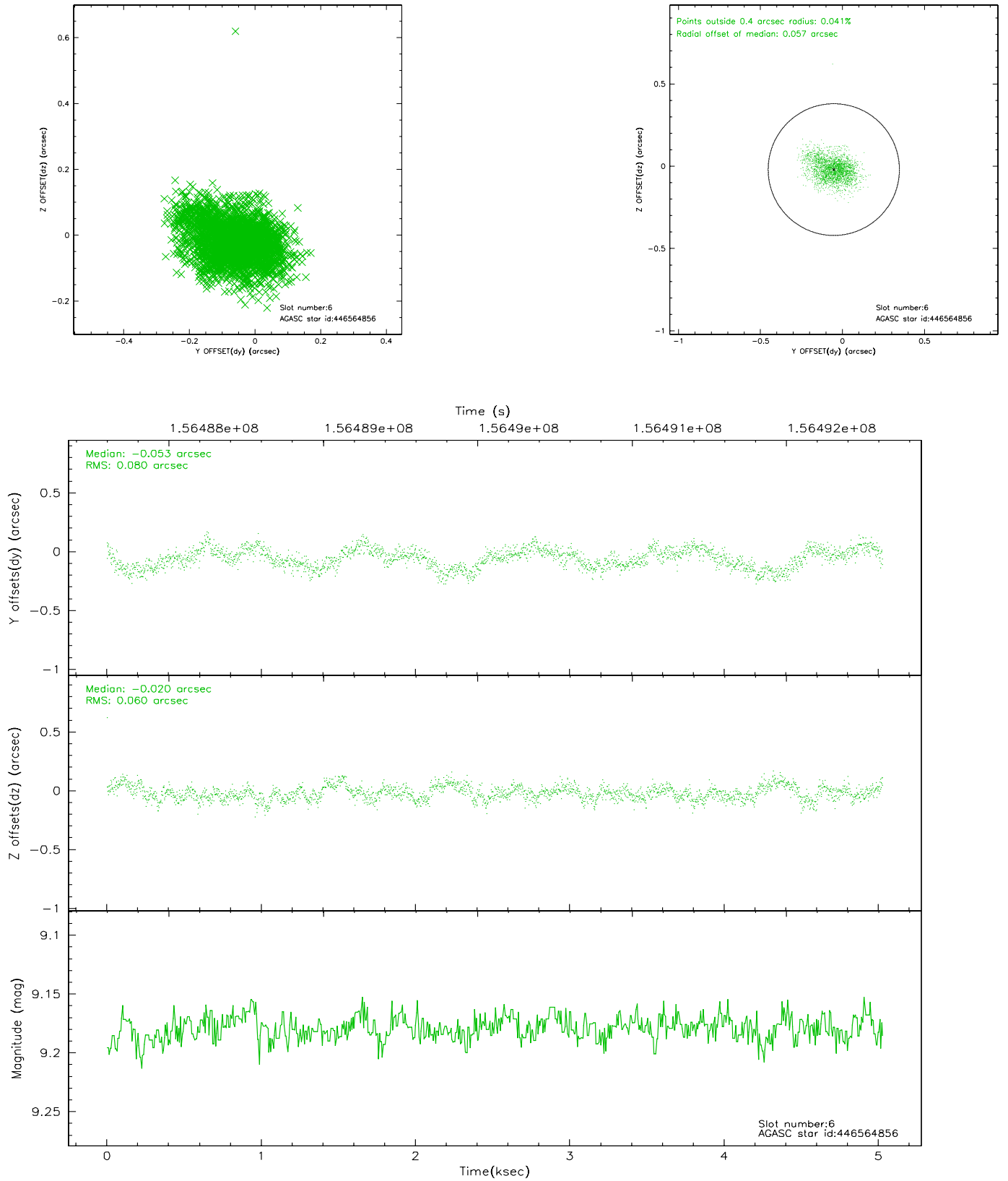
## 2.4.2 Slot 4



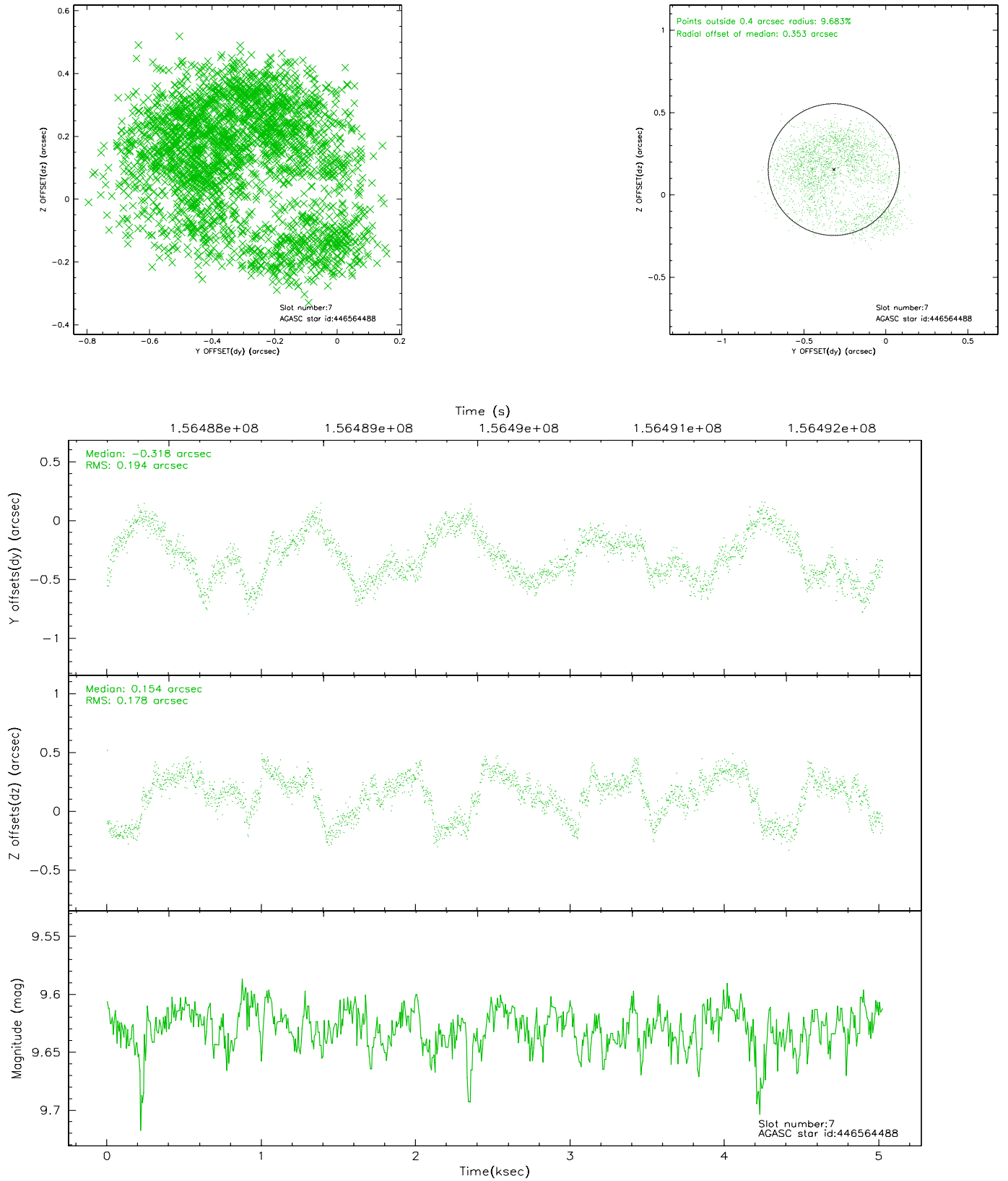
### 2.4.3 Slot 5



## 2.4.4 Slot 6

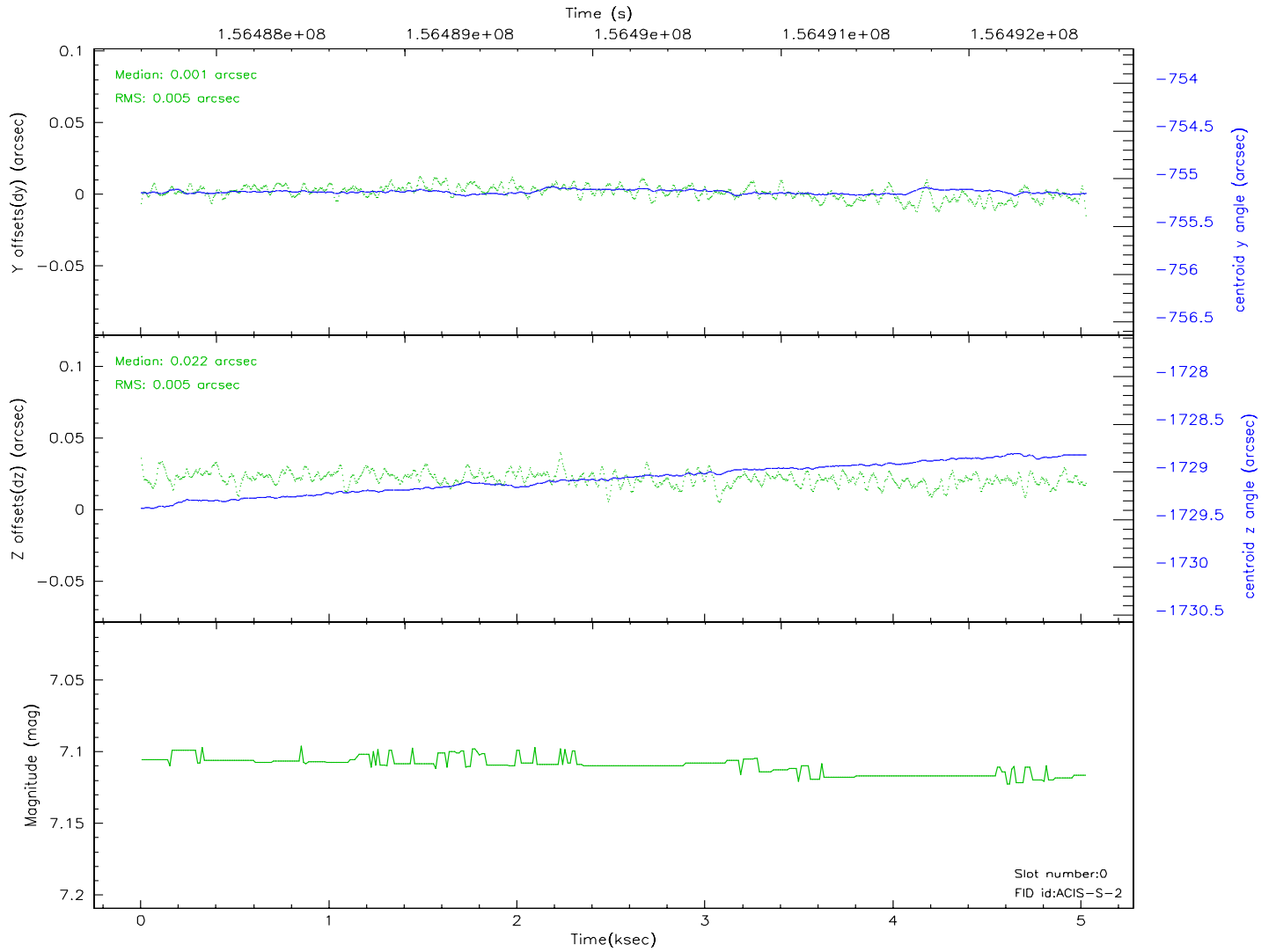
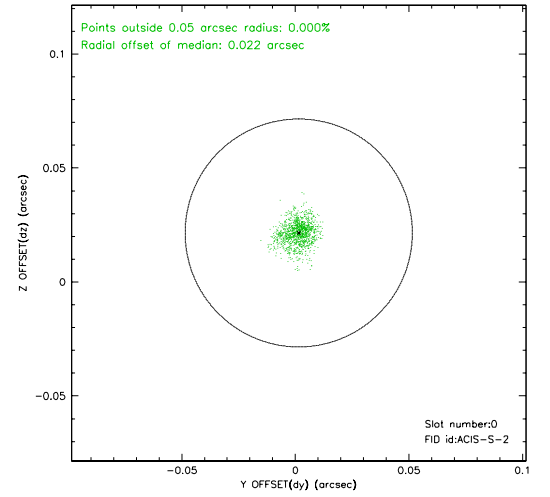
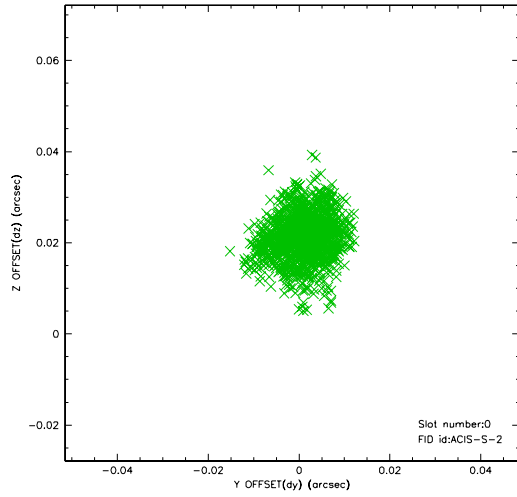


## 2.4.5 Slot 7

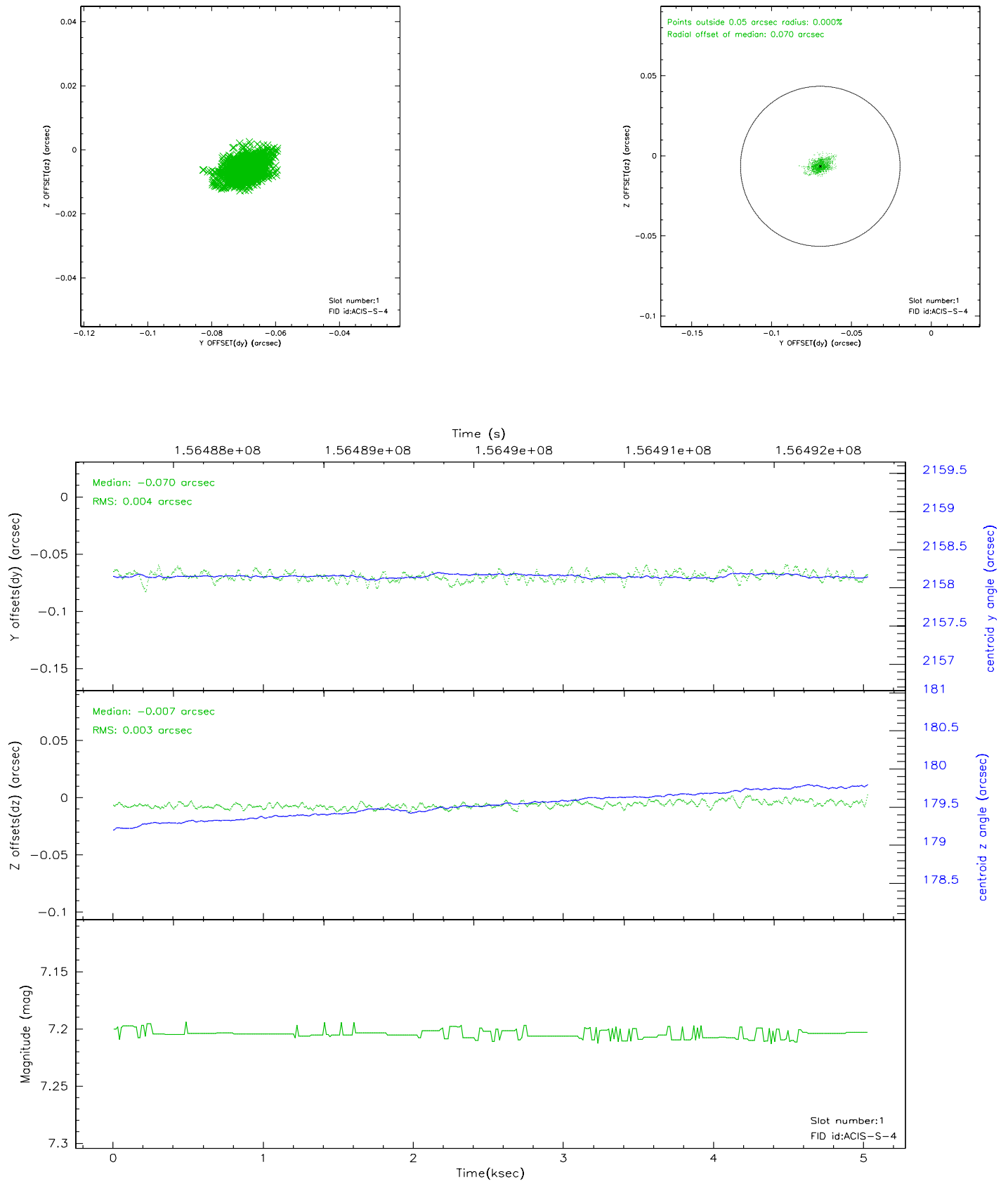


## 2.5 FID Slots

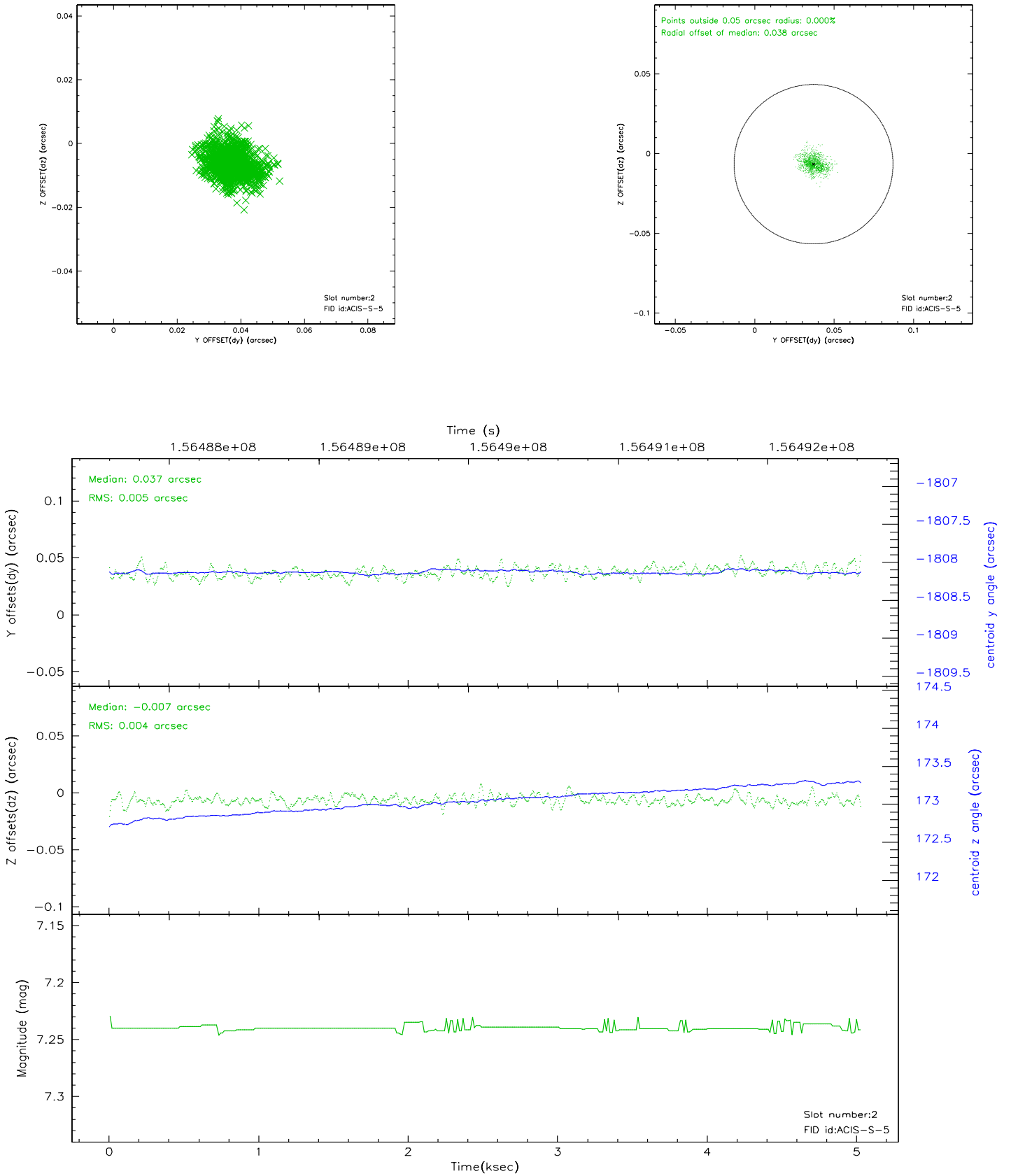
### 2.5.1 Slot 0



## 2.5.2 Slot 1

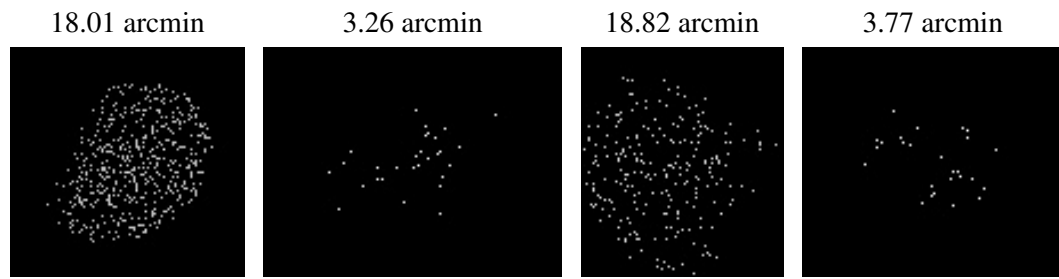


### 2.5.3 Slot 2





### 3 Point Sources



## A Summary

### A.1 Status

V&V Scientist	Jen Lauer
V&V Date (YYYY-MM-DD)	2006.10.16
V&V Edition	1
V&V Disposition and Status	OK
V&V Charge Time	4.595

### A.2 Comments