

V&V Reference Report

L2 ASCDS Version : 7.6.9

Observation 4045 - L2 Version 001
Chandra X-Ray Center

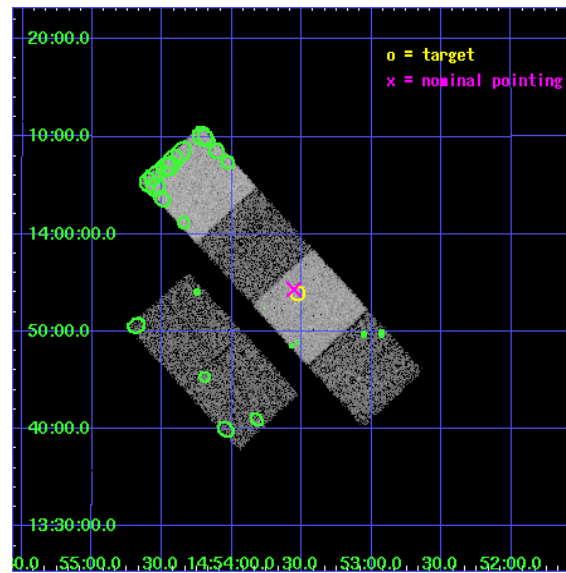
L2 Processing Date : Oct 15 2006

Contents

1	Front	2
2	OBI	3
2.1	OBI	3
2.1.1	Images	3
2.1.2	Bias	3
2.1.3	Parameters	4
2.1.4	Events	4
2.2	Compared Parameters	5
2.3	Aspect	6
2.4	Star Slots	9
2.4.1	Slot 3	9
2.4.2	Slot 4	10
2.4.3	Slot 5	11
2.4.4	Slot 6	12
2.4.5	Slot 7	13
2.5	FID Slots	14
2.5.1	Slot 0	14
2.5.2	Slot 1	15
2.5.3	Slot 2	16
3	Point Sources	17
A	Summary	18
A.1	Status	18
A.2	Comments	18

1 Front

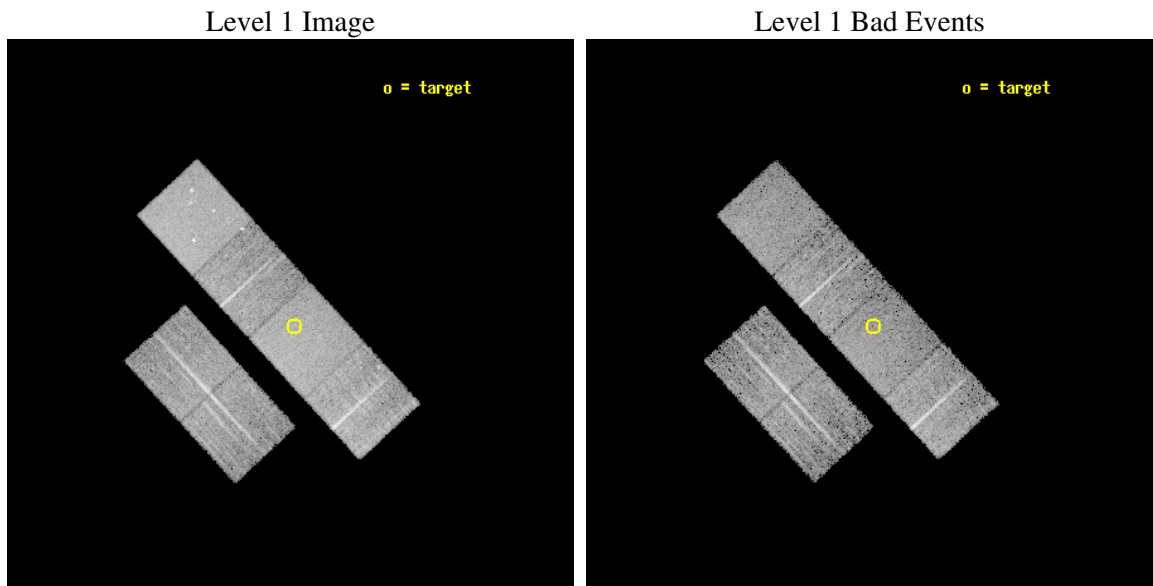
seq_num	700724
obs_id	4045
title	WHY DO WE SEE BROAD LINES IN X-RAY ABSORBED AGN?
observer	Dr. BELINDA WILKES
object	2MASS145331+1353
dtcycle	0
cycle	P
ra_targ	223.38125
dec_targ	13.899639
ra_nom	223.38914256894
dec_nom	13.905530756153
roll_nom	47.308294782807
revision	2
ontime	8463.9999684691
livetime	8356.8237044595
ontime2	8463.9999684691
ontime3	8460.7590281665
ontime5	8463.9999684691
ontime6	8463.9999684691
ontime7	8463.9999684691
ontime8	8460.759008199
l2events	79082



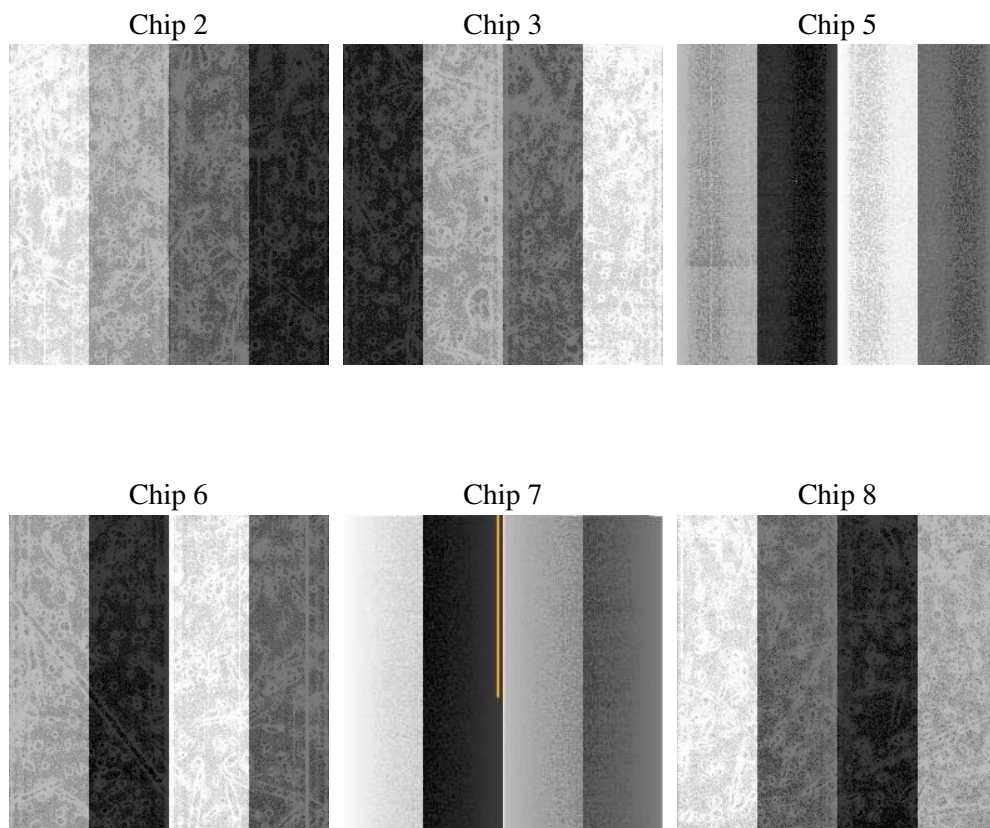
2 OBI

2.1 OBI

2.1.1 Images



2.1.2 Bias



2.1.3 Parameters

obi_num	0
ascdsver	7.6.9
caldsver	3.2.3
date	2006-10-15T03:24:06
revision	2

sched_exp_time	8709.000000
ontime	8468.7309430838
ontime2	8468.730913192
ontime3	8465.4900028408
ontime5	8468.7309730351
ontime6	8468.7309730351
ontime7	8468.7309430838
ontime8	8465.4898831844
l1events	363598

2.1.4 Events

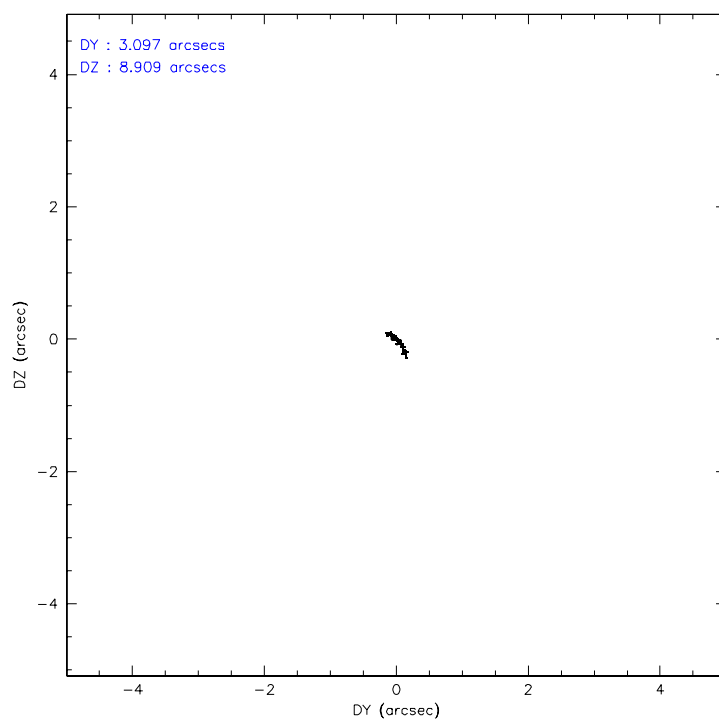
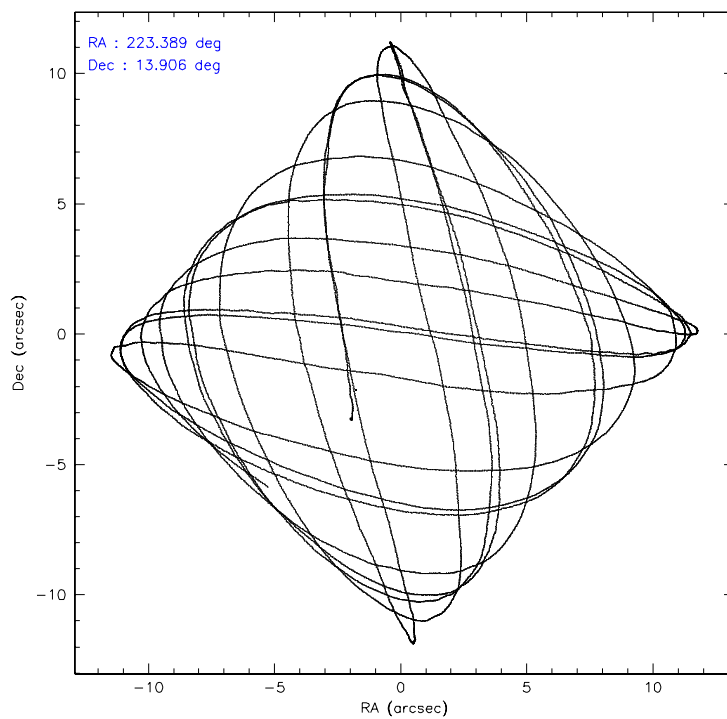
	ccd 2	ccd 3	ccd 5	ccd 6	ccd 7	ccd 8
level 1 events	51359	49189	75260	52777	67903	67110
rejected events	45046	43176	41852	46563	41761	52742
rejected %	87%	87%	55%	88%	61%	78%

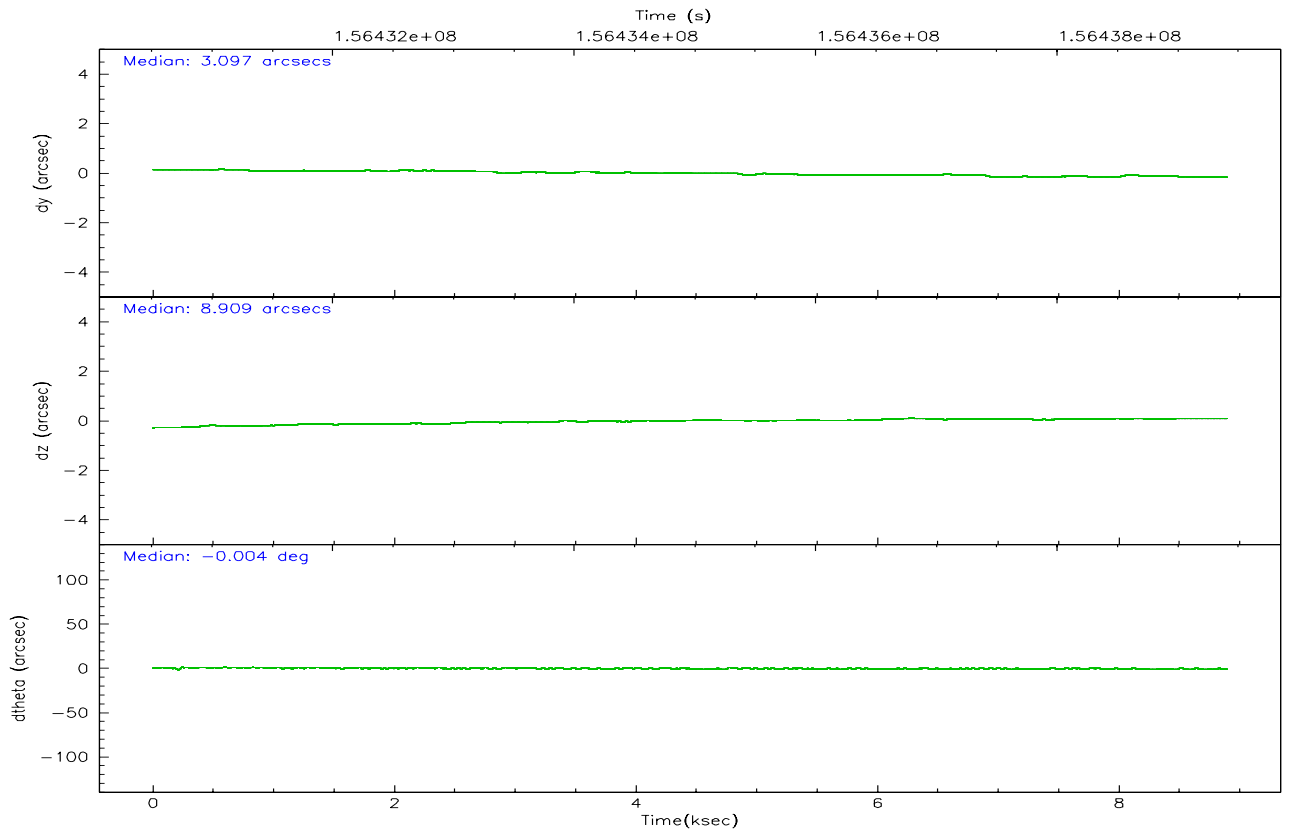
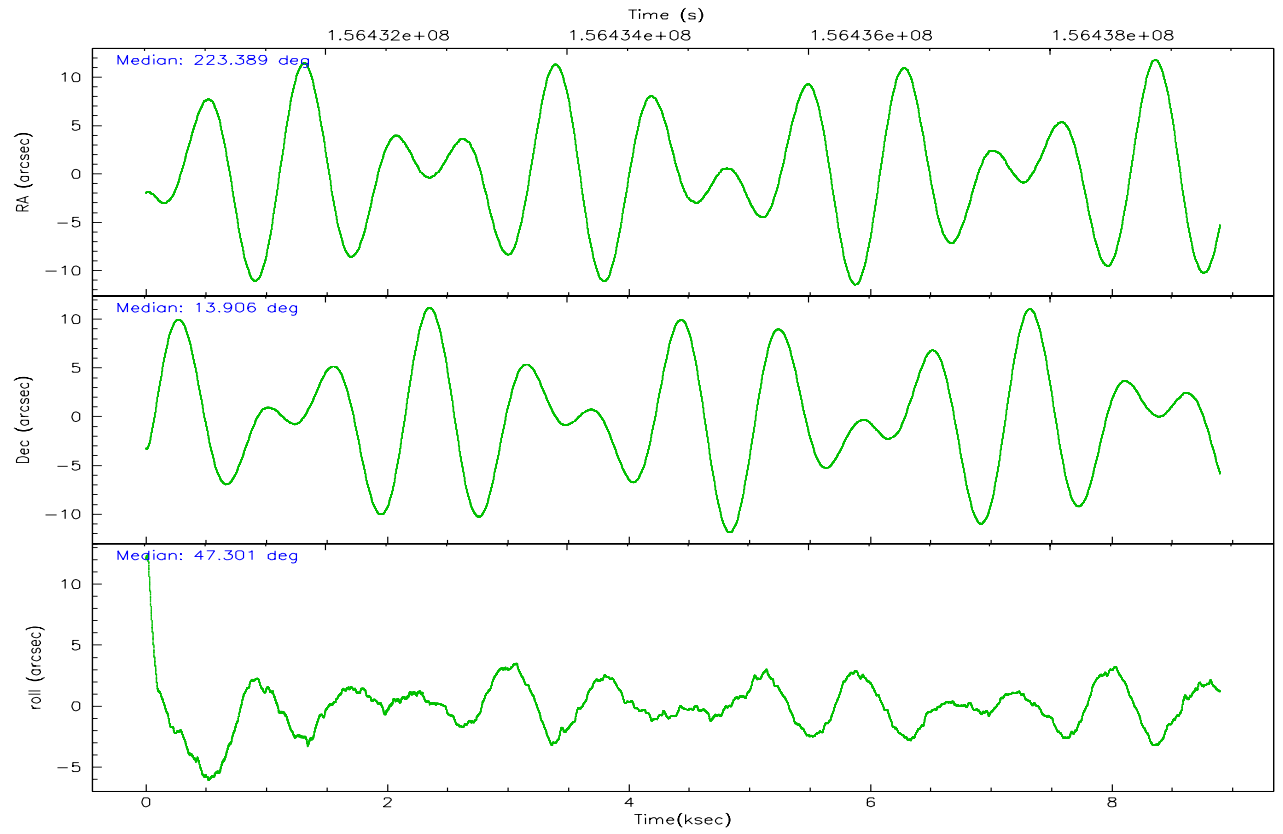
	ccd 2	ccd 3	ccd 5	ccd 6	ccd 7	ccd 8
grade 0 events	2844	2699	3119	2543	1786	5092
	5%	5%	4%	4%	2%	7%
grade 1 events	31	41	84	27	35	48
	0%	0%	0%	0%	0%	0%
grade 2 events	1241	1109	9954	1252	6528	2691
	2%	2%	13%	2%	9%	4%
grade 3 events	587	603	776	618	1340	1669
	1%	1%	1%	1%	1%	2%
grade 4 events	609	599	802	580	1257	1599
	1%	1%	1%	1%	1%	2%
grade 5 events	1887	2178	3540	2333	4232	2923
	3%	4%	4%	4%	6%	4%
grade 6 events	1039	1009	18807	1225	15253	3328
	2%	2%	24%	2%	22%	4%
grade 7 events	43121	40951	38178	44199	37472	49760
	83%	83%	50%	83%	55%	74%

2.2 Compared Parameters

Parameter	Planned	Actual	Parameter	Planned	Actual
Instrument	ACIS	ACIS	Obspar format version number	6	6
Detector	ACIS-235678	ACIS-235678	Obspar file type	PREDICTED	ACTUAL
Grating	NONE	NONE	Obspar update status	NONE	UPDATED
Data mode	FAINT	FAINT	Number of optional ACIS chips dropped	0	0
Observation mode	POINTING	POINTING	On-chip summing requested	N	N
Pointing RA	223.383387	223.3891425689351	Subarray requested	NONE	NONE
Pointing Dec	13.878842	13.90553075615349	Alternating exposures requested	N	N
Pointing Roll	47.153050	47.30829478280651	Primary exposure time	0.000000	3.2
SIM focus pos (mm)	-0.684267	-0.6828225247311905			
SIM defocus (mm)	0	0.001444936568705701			
SIM translation stage pos (mm)	-190.132523	-190.1425803651734			
SIM translation stage offset (mm)	0	0.01005778216563158			
Observation start time	156430698.184000	156430053.77397			
Observation start date	2002-12-16T12:57:14	2002-12-16T12:47:33			
Observation end time	156439407.184000	156439659.04937			
Observation end date	2002-12-16T15:22:23	2002-12-16T15:27:39			
Read mode	TIMED	TIMED			

2.3 Aspect



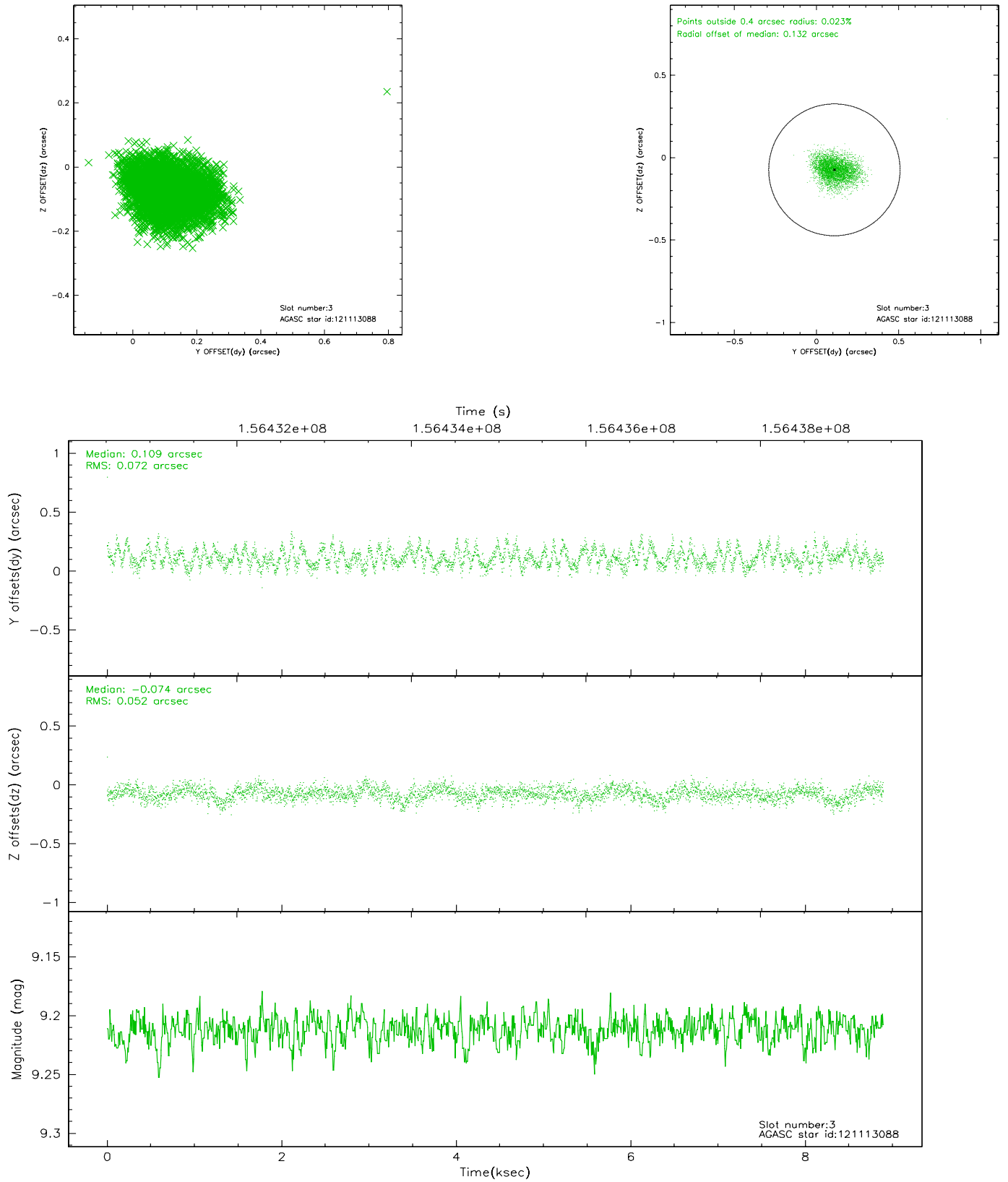


Slot Statistics

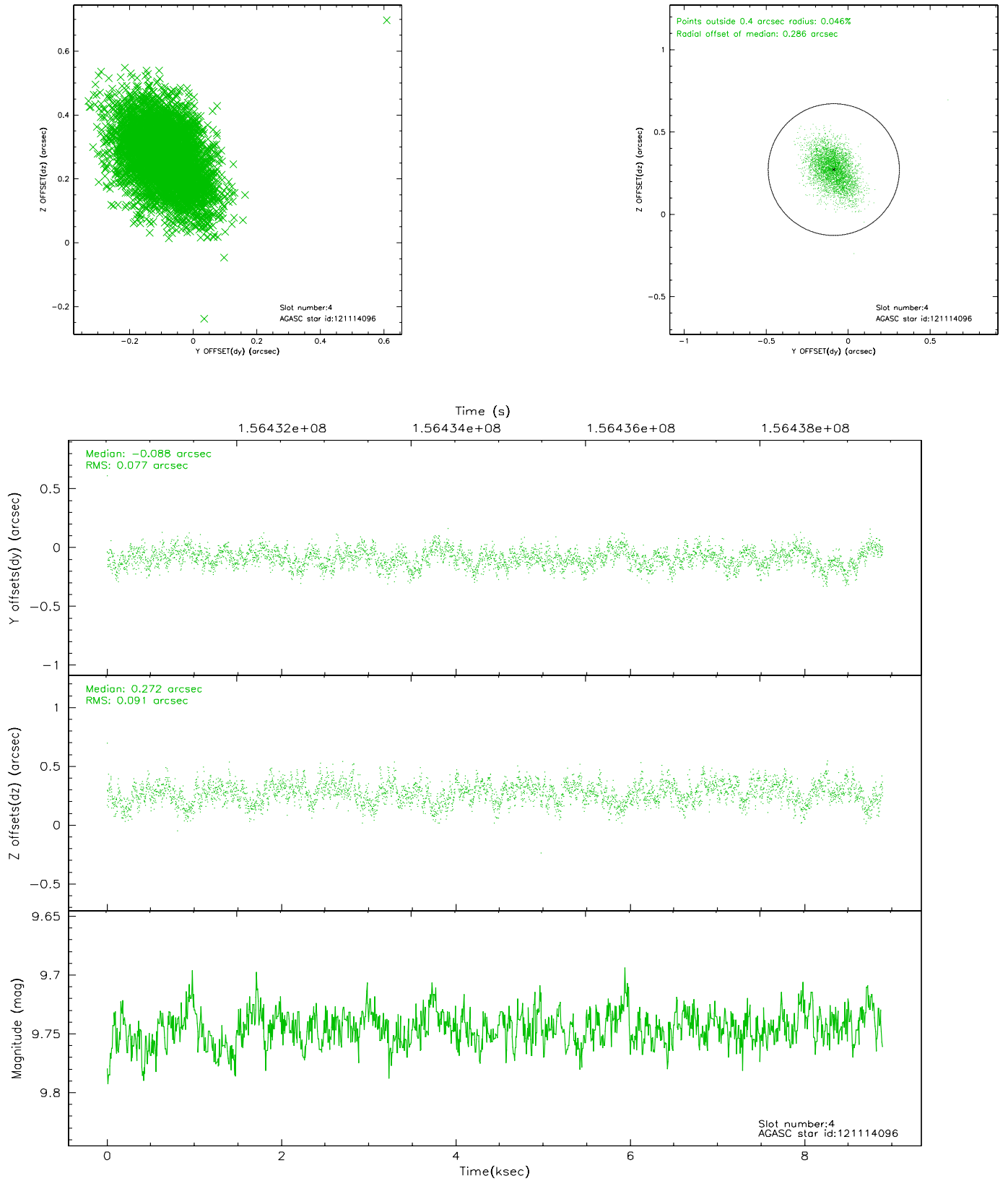
slot	status	id	mag	n_pts	med_dy	med_dz	dr1	dr2	ra	dec	mean_y	mean_z
0	FID	ACIS-S-2	7.10	2170	-0.012	0.011	0.007	0.012	0.000000	0.000000	-755.75	-1730.03
1	FID	ACIS-S-4	7.20	2170	-0.031	0.003	0.006	0.010	0.000000	0.000000	2157.23	177.81
2	FID	ACIS-S-5	7.23	2170	0.012	-0.005	0.008	0.013	0.000000	0.000000	-1807.77	172.17
3	GUIDE	121113088	9.21	4337	0.109	-0.074	0.095	0.151	222.684381	13.961237	-1440.84	1993.71
4	GUIDE	121114096	9.75	4338	-0.088	0.272	0.126	0.209	223.962013	13.666984	818.89	-2000.78
5	GUIDE	121114400	7.70	4335	0.088	0.015	0.050	0.081	222.885358	13.477561	-2243.64	295.82
6	GUIDE	121112928	7.71	4339	-0.170	-0.237	0.058	0.094	223.069811	14.491275	872.65	2300.67
7	GUIDE	121119856	9.16	4338	0.062	0.031	0.078	0.126	223.187249	13.961512	-247.69	704.79

2.4 Star Slots

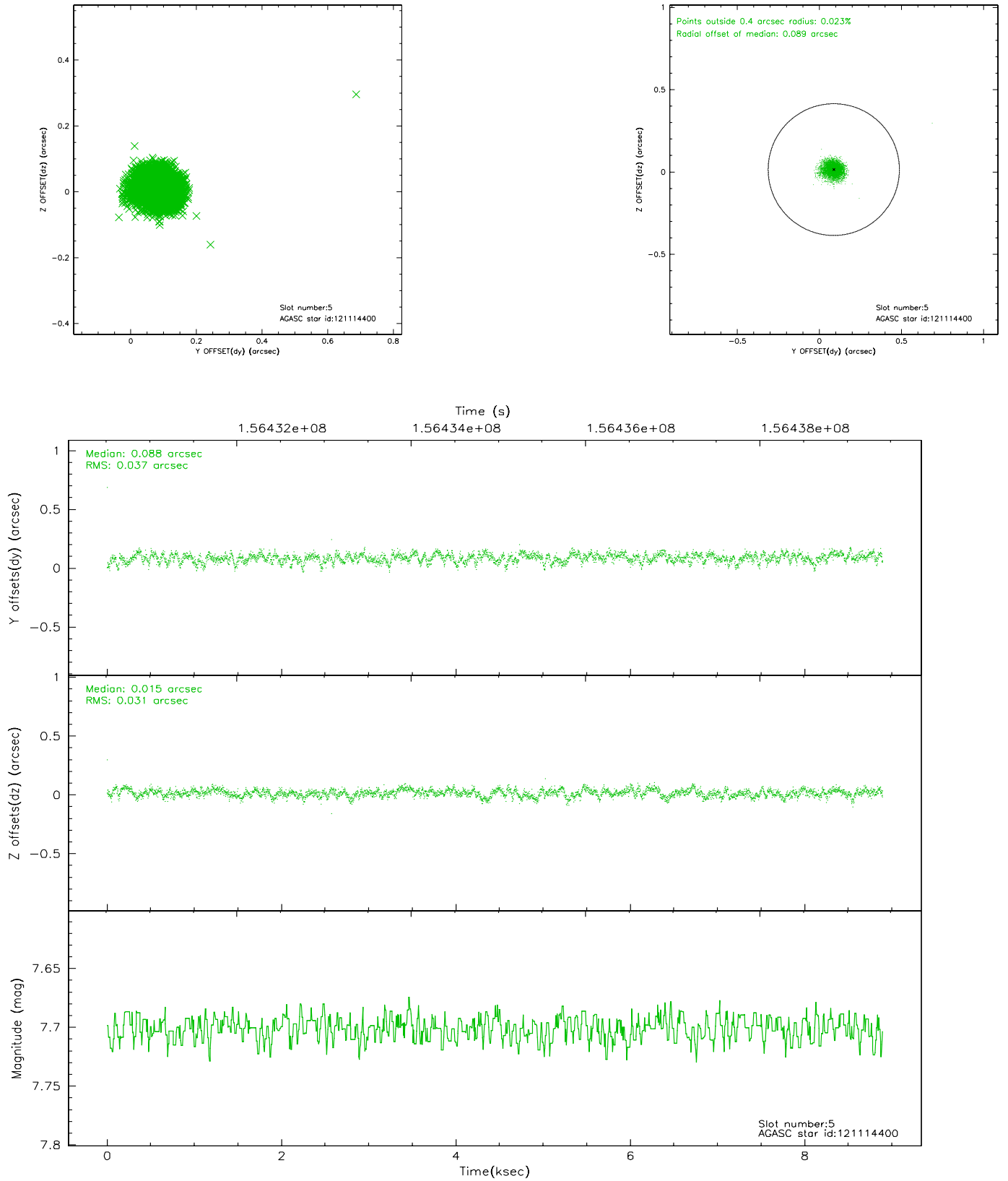
2.4.1 Slot 3



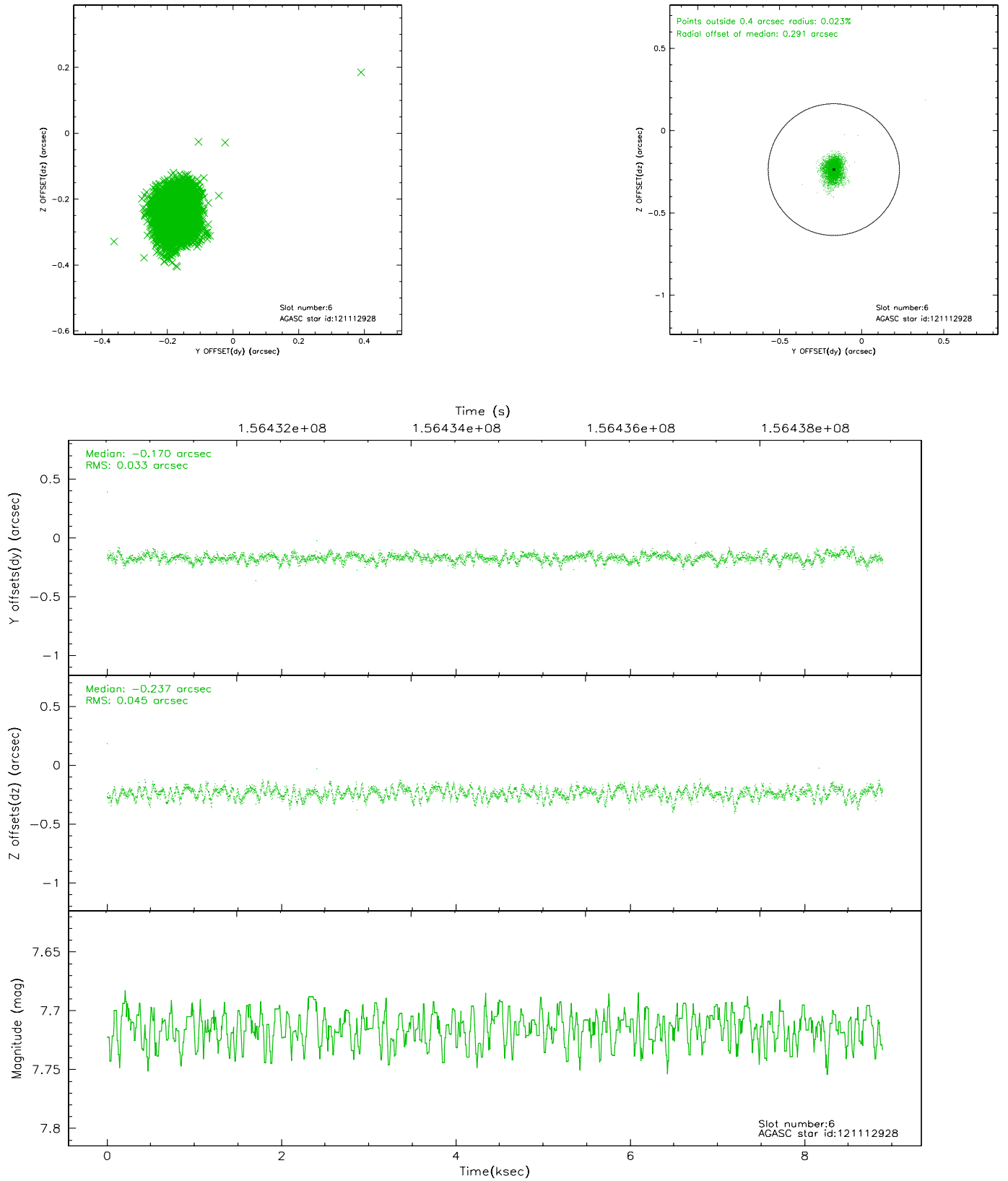
2.4.2 Slot 4



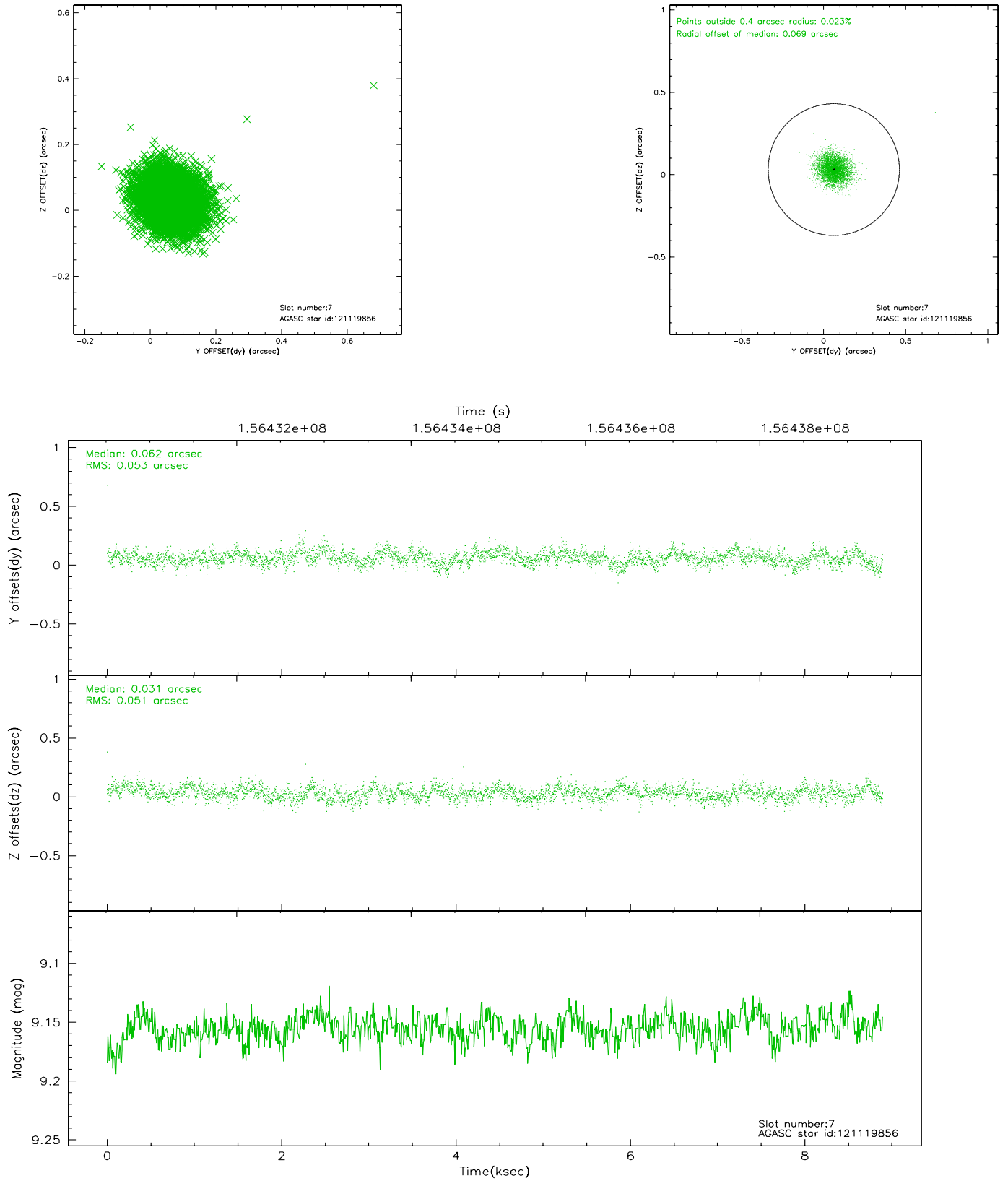
2.4.3 Slot 5



2.4.4 Slot 6

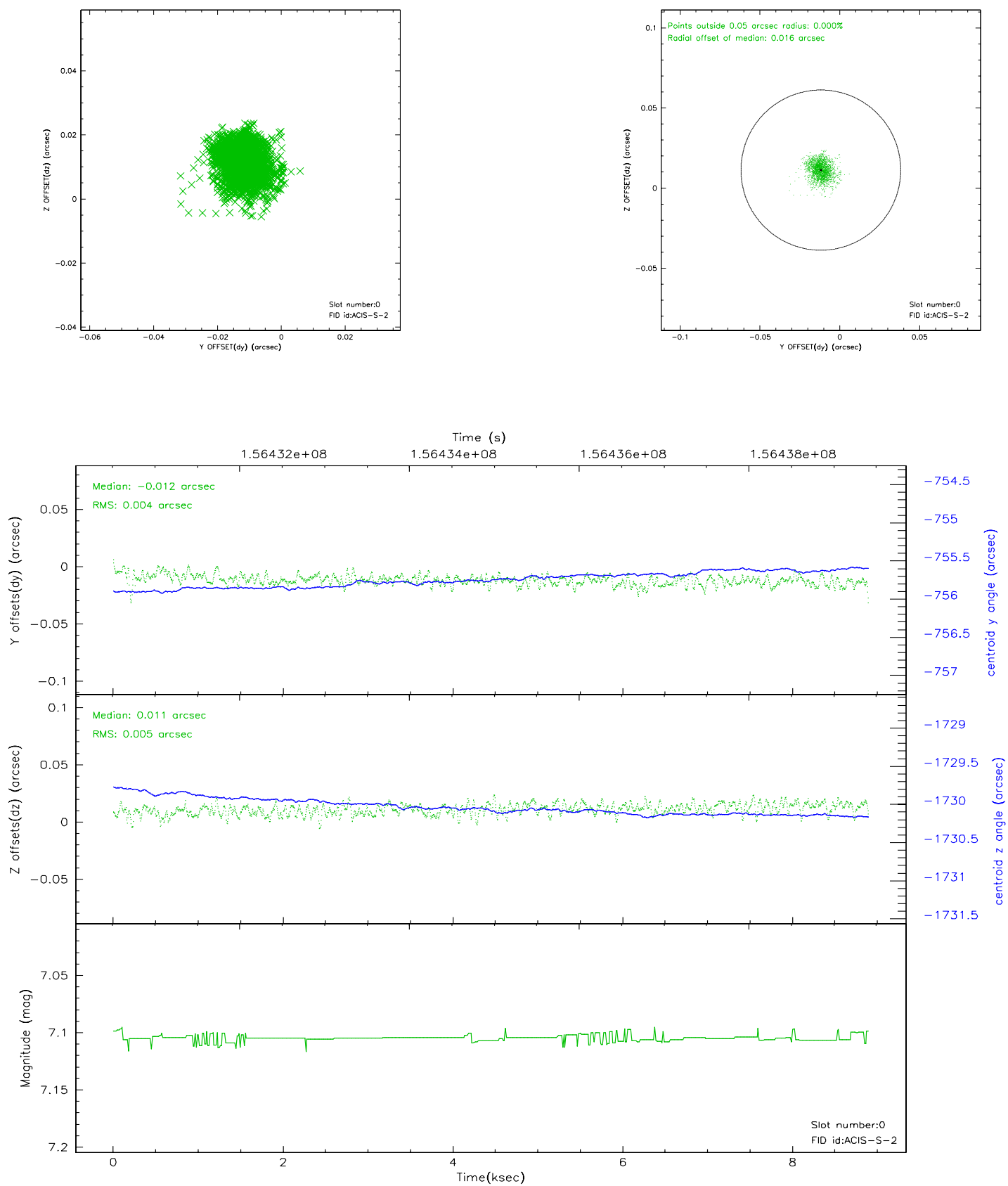


2.4.5 Slot 7

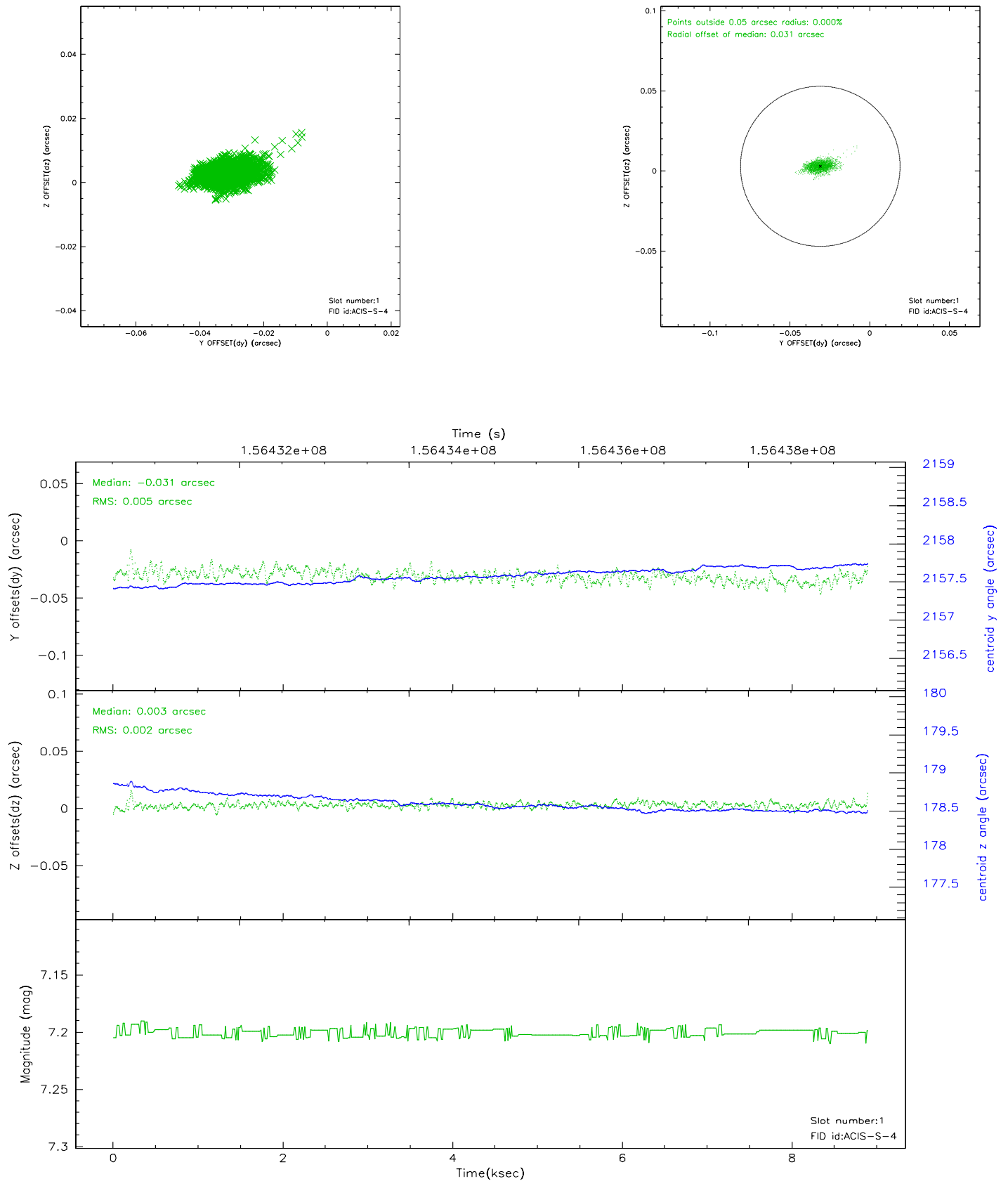


2.5 FID Slots

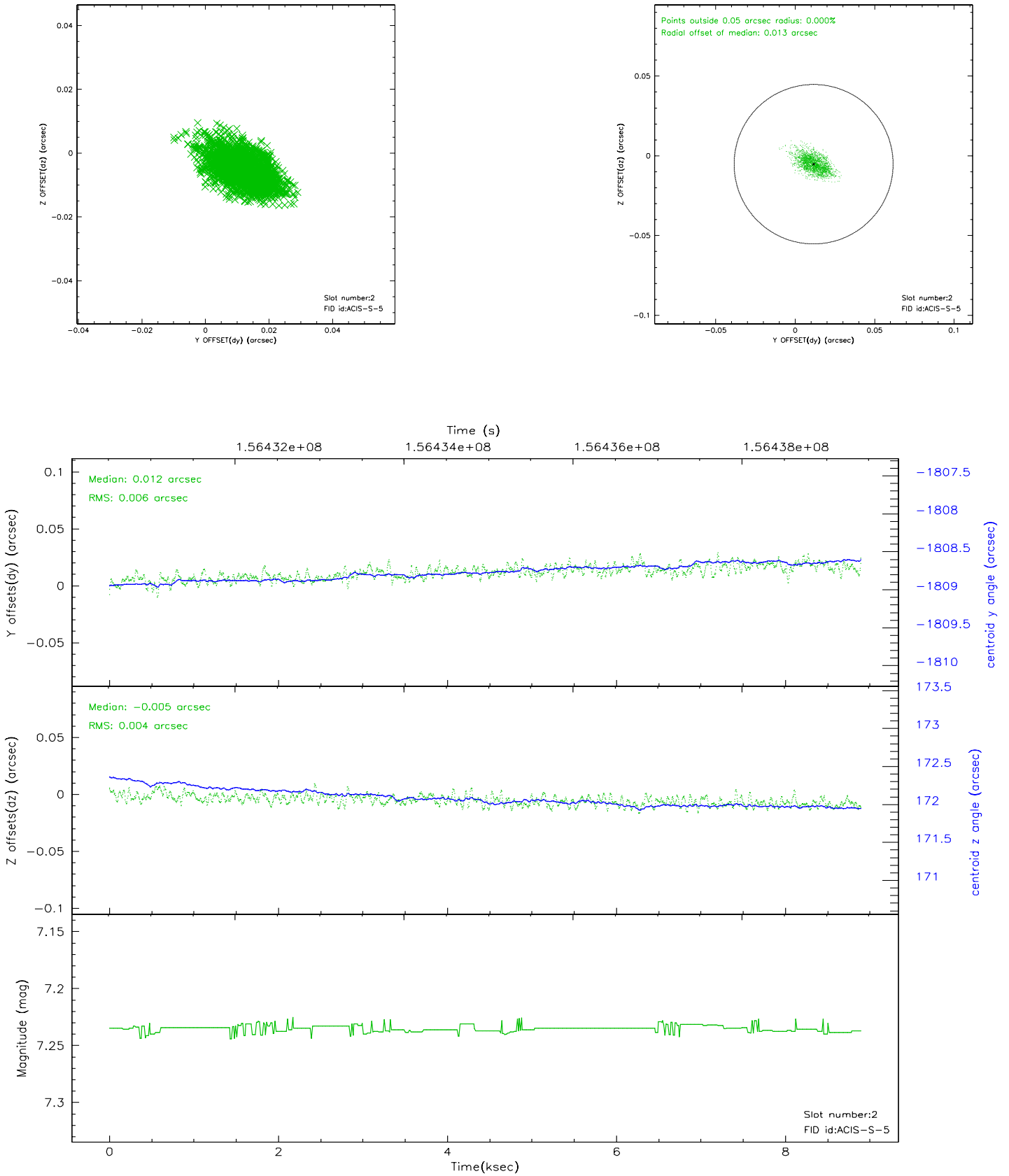
2.5.1 Slot 0



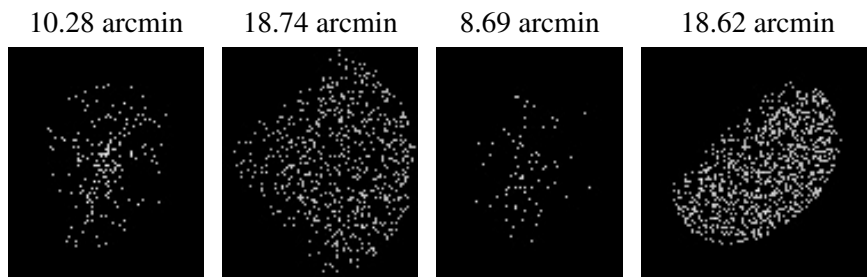
2.5.2 Slot 1



2.5.3 Slot 2



3 Point Sources



A Summary

A.1 Status

V&V Scientist	Jen Lauer
V&V Date (YYYY-MM-DD)	2006.10.16
V&V Edition	1
V&V Disposition and Status	OK
V&V Charge Time	8.467

A.2 Comments