

V&V Reference Report

L2 ASCDS Version : 7.6.8

Observation 4042 - L2 Version 001
Chandra X-Ray Center

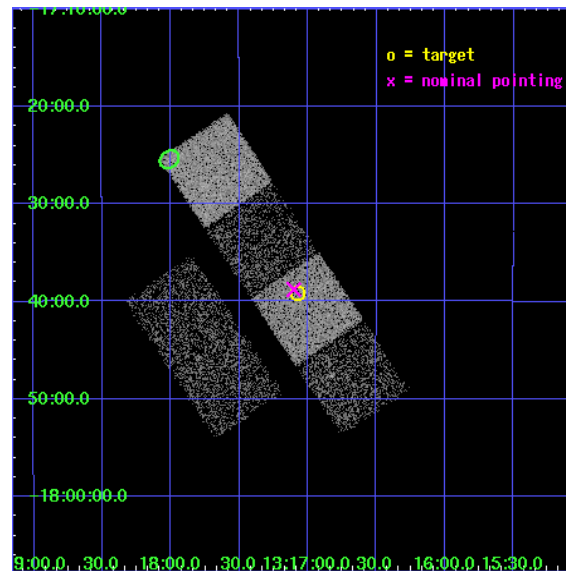
L2 Processing Date : Jul 22 2006

Contents

1	Front	2
2	OBI	3
2.1	OBI	3
2.1.1	Images	3
2.1.2	Bias	3
2.1.3	Parameters	4
2.1.4	Events	4
2.2	Compared Parameters	5
2.3	Aspect	6
2.4	Star Slots	9
2.4.1	Slot 3	9
2.4.2	Slot 4	10
2.4.3	Slot 5	11
2.4.4	Slot 6	12
2.4.5	Slot 7	13
2.5	FID Slots	14
2.5.1	Slot 0	14
2.5.2	Slot 1	15
2.5.3	Slot 2	16
3	Point Sources	17
A	Summary	18
A.1	Status	18
A.2	Comments	18

1 Front

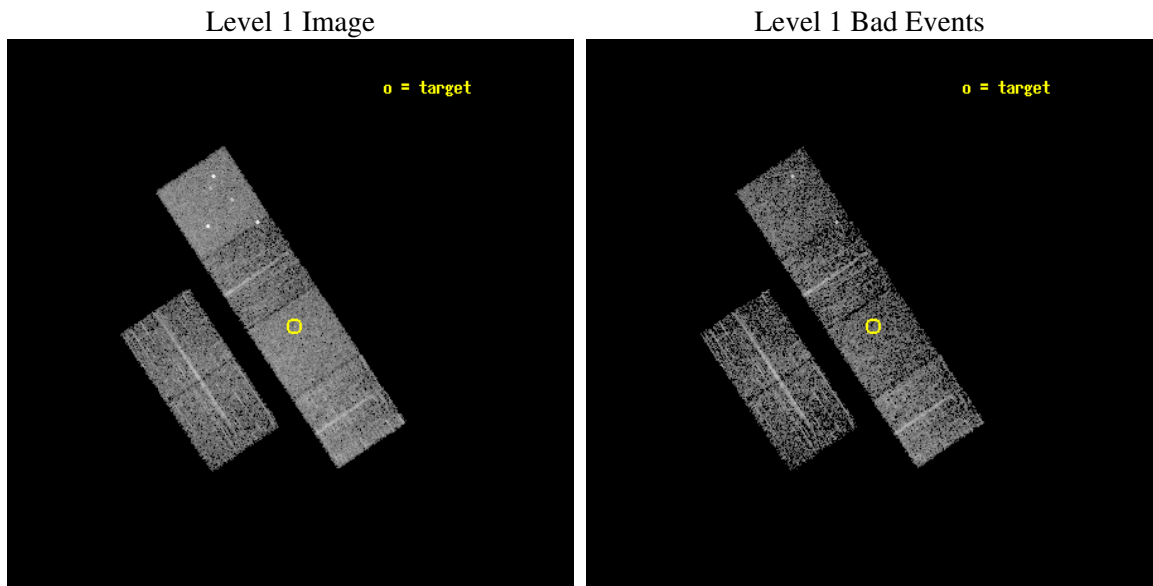
seq_num	700721
obs_id	4042
title	WHY DO WE SEE BROAD LINES IN X-RAY ABSORBED AGN?
observer	Dr. BELINDA WILKES
object	2MASS131704-173913
dtcycle	0
cycle	P
ra_targ	199.268333
dec_targ	-17.6535
ra_nom	199.2754428251
dec_nom	-17.646395424394
roll_nom	56.249151519401
revision	2
ontime	2953.599988997
livetime	2916.1997274919
ontime2	2953.599988997
ontime3	2953.599988997
ontime5	2953.599988997
ontime6	2953.599988997
ontime7	2953.599988997
ontime8	2953.599988997
l2events	28780



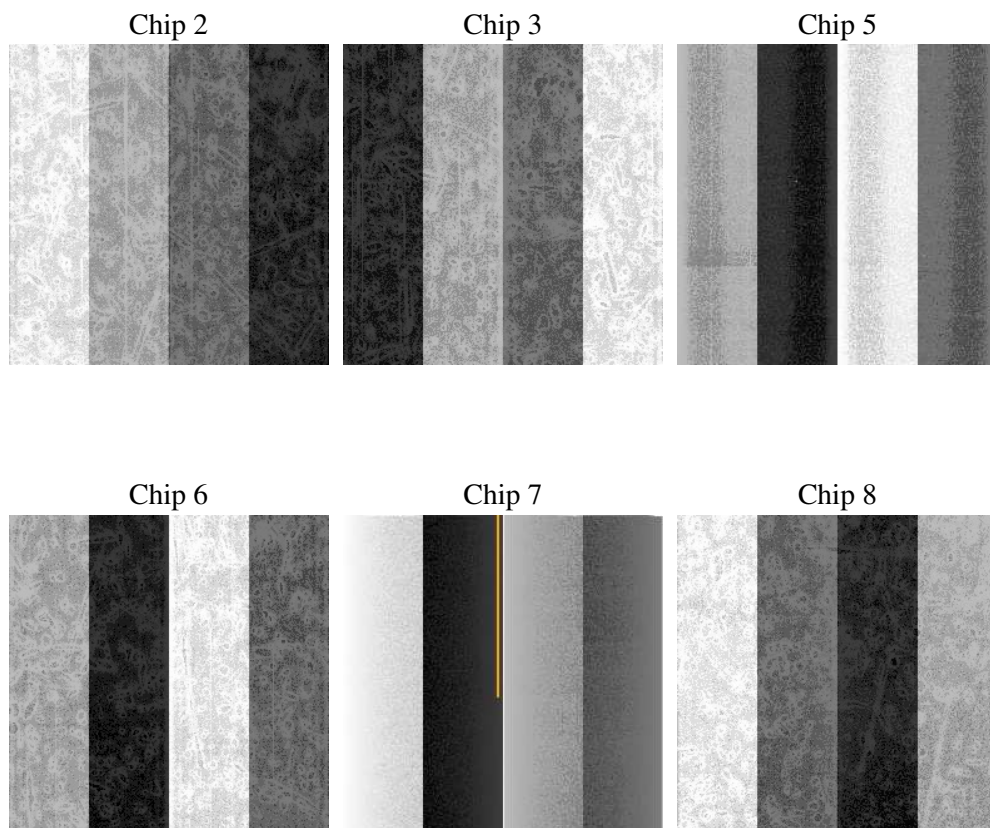
2 OBI

2.1 OBI

2.1.1 Images



2.1.2 Bias



2.1.3 Parameters

obi_num	0
ascdsver	7.6.8
caldsver	3.2.2
date	2006-07-22T15:41:01
revision	2

sched_exp_time	3200.000000
ontime	2959.0376542807
ontime2	2959.0376542807
ontime3	2959.0375447273
ontime5	2959.0375447273
ontime6	2959.0375447273
ontime7	2959.0376542807
ontime8	2959.0375447273
l1events	140351

2.1.4 Events

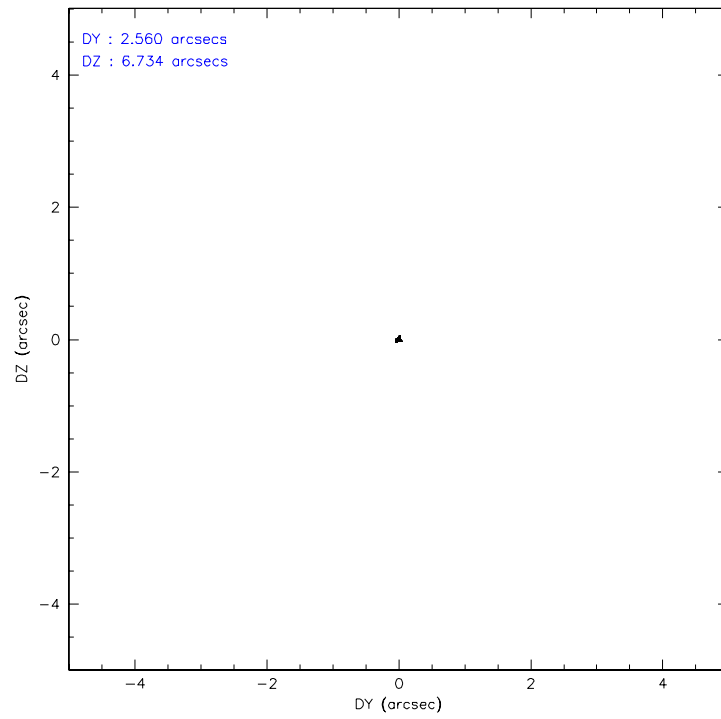
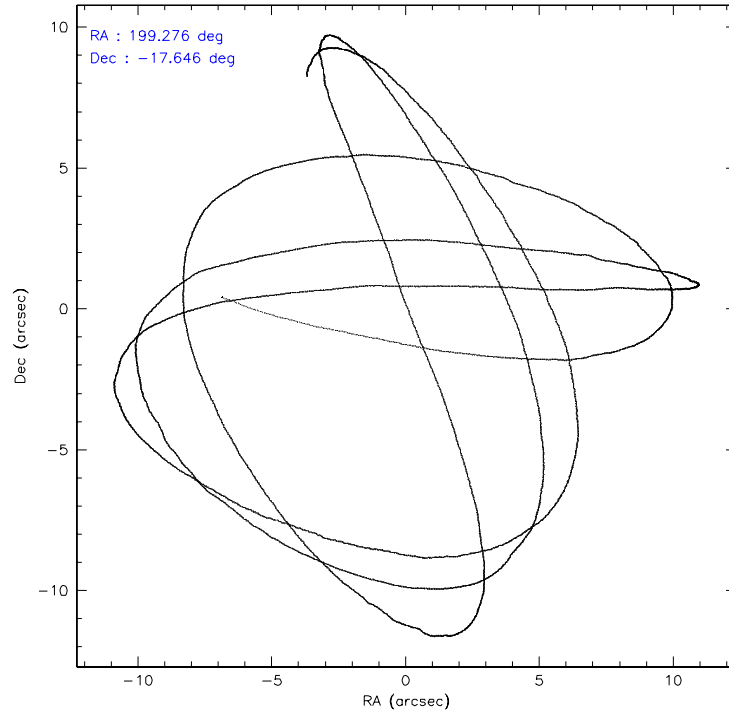
	ccd 2	ccd 3	ccd 5	ccd 6	ccd 7	ccd 8
level 1 events	19312	18701	29742	18521	25617	28458
rejected events	17033	16523	15878	16396	15945	23295
rejected %	88%	88%	53%	88%	62%	81%

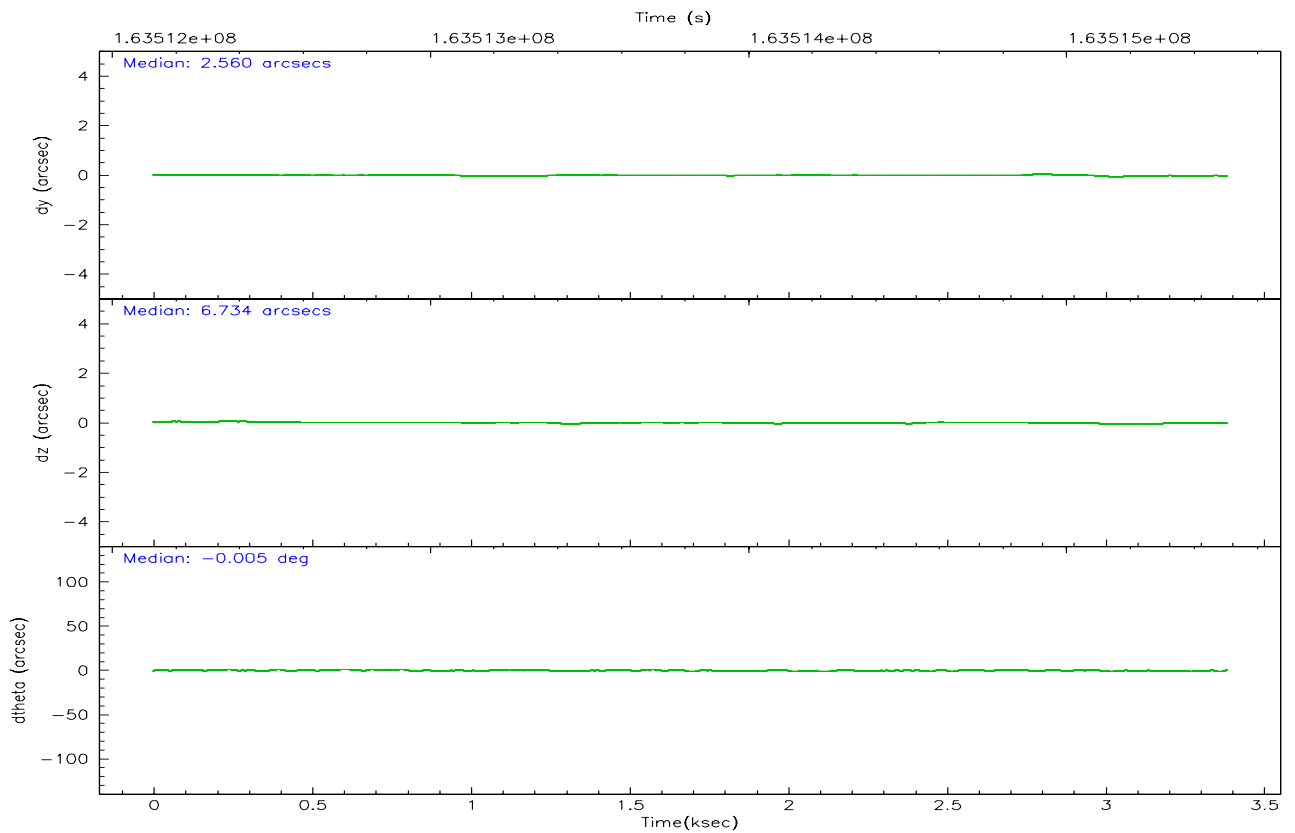
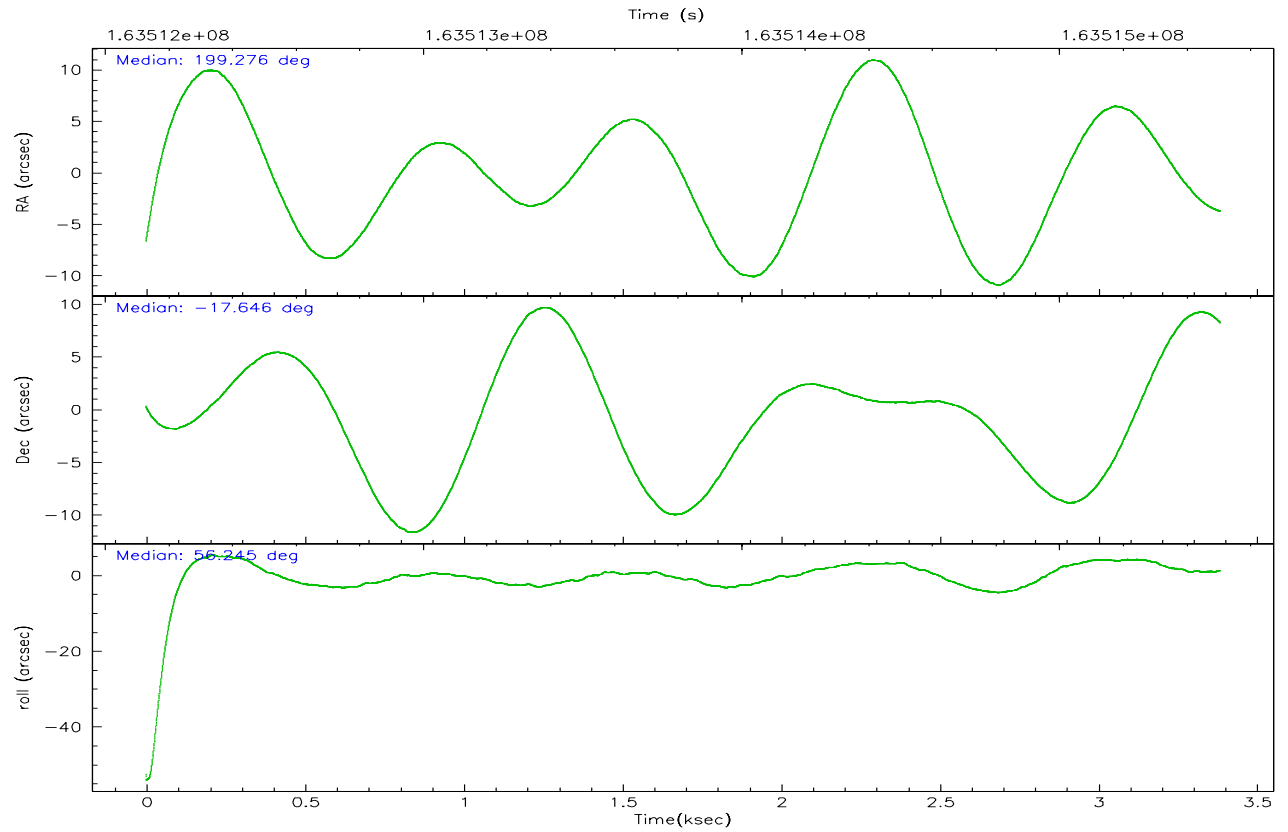
	ccd 2	ccd 3	ccd 5	ccd 6	ccd 7	ccd 8
grade 0 events	1006	962	1866	819	573	1560
	5%	5%	6%	4%	2%	5%
grade 1 events	16	6	82	8	18	17
	0%	0%	0%	0%	0%	0%
grade 2 events	473	401	4252	439	2433	1162
	2%	2%	14%	2%	9%	4%
grade 3 events	220	218	319	222	468	544
	1%	1%	1%	1%	1%	1%
grade 4 events	206	215	328	213	427	497
	1%	1%	1%	1%	1%	1%
grade 5 events	724	849	1570	841	1653	1048
	3%	4%	5%	4%	6%	3%
grade 6 events	381	382	7114	432	5783	1447
	1%	2%	23%	2%	22%	5%
grade 7 events	16286	15668	14211	15547	14262	22183
	84%	83%	47%	83%	55%	77%

2.2 Compared Parameters

Parameter	Planned	Actual	Parameter	Planned	Actual
Instrument	ACIS	ACIS	Obspar format version number	6	6
Detector	ACIS-235678	ACIS-235678	Obspar file type	PREDICTED	ACTUAL
Grating	NONE	NONE	Obspar update status	NONE	UPDATED
Data mode	FAINT	FAINT	On-chip summing requested	N	N
Observation mode	POINTING	POINTING	Subarray requested	NONE	NONE
Pointing RA	199.273884	199.2754428251046	Alternating exposures requested	N	N
Pointing Dec	-17.673724	-17.64639542439379	Primary exposure time	0.000000	3.2
Pointing Roll	56.092255	56.24915151940122			
SIM focus pos (mm)	-0.684267	-0.6828225247311905			
SIM defocus (mm)	0	0.001444936568705701			
SIM translation stage pos (mm)	-190.132523	-190.1425803651734			
SIM translation stage offset (mm)	0	0.01005778216563158			
Observation start time	163512309.184000	163511606.87077			
Observation start date	2003-03-08T12:04:05	2003-03-08T11:53:26			
Observation end time	163515509.184000	163515978.49595			
Observation end date	2003-03-08T12:57:25	2003-03-08T13:06:18			
Read mode	TIMED	TIMED			

2.3 Aspect



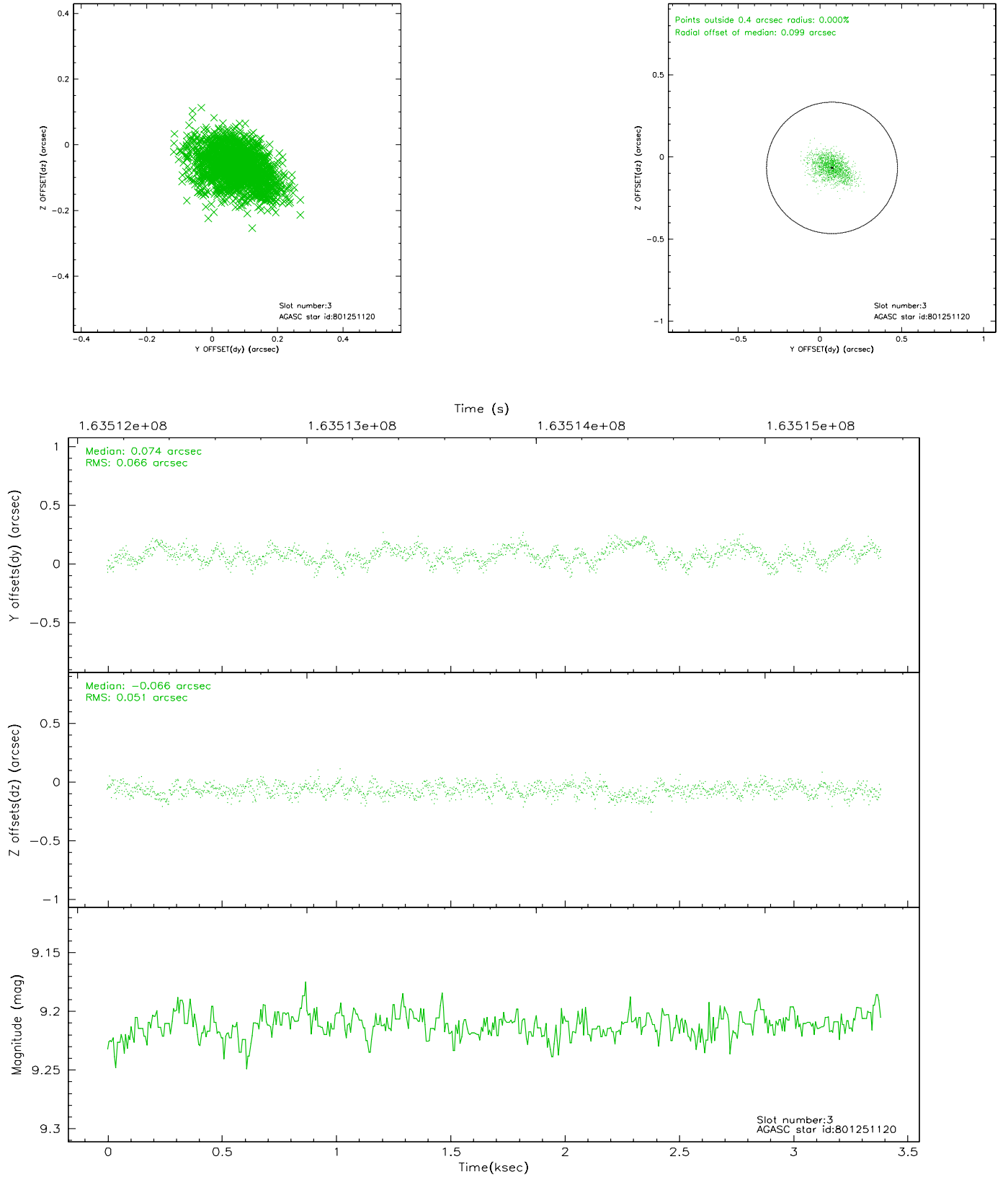


Slot Statistics

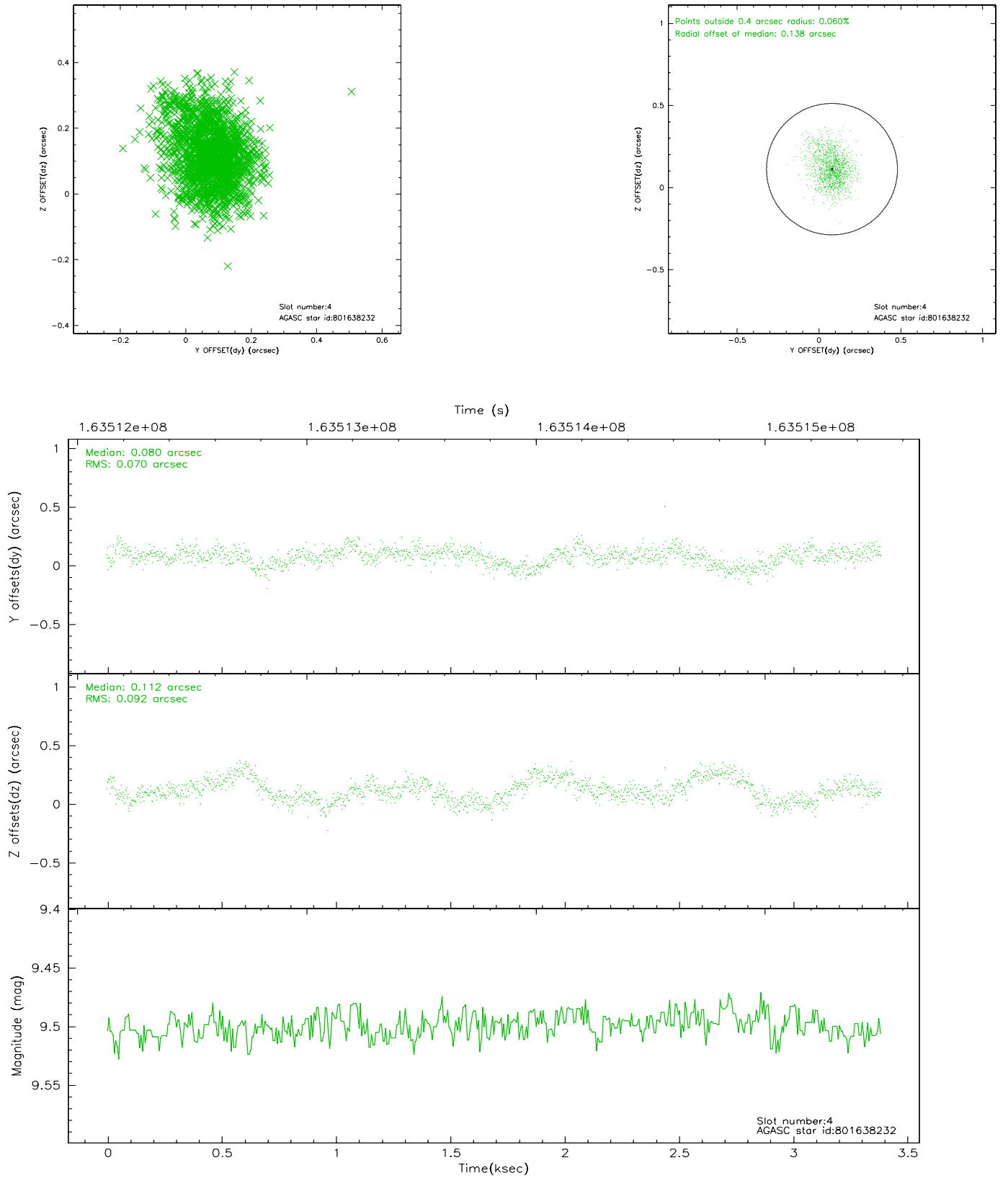
slot	status	id	mag	n_pts	med_dy	med_dz	dr1	dr2	ra	dec	mean_y	mean_z
0	FID	ACIS-S-2	7.11	826	-0.028	0.025	0.006	0.009	0.000000	0.000000	-755.19	-1727.83
1	FID	ACIS-S-4	7.20	826	-0.045	0.007	0.005	0.009	0.000000	0.000000	2157.20	178.74
2	FID	ACIS-S-5	7.24	826	0.042	-0.023	0.006	0.010	0.000000	0.000000	-1805.58	174.46
3	GUIDE	801251120	9.21	1653	0.074	-0.066	0.090	0.149	198.836398	-17.471373	-235.70	1652.38
4	GUIDE	801638232	9.50	1653	0.080	0.112	0.121	0.203	199.279229	-17.902541	-674.05	-473.51
5	GUIDE	801639640	10.12	1649	0.031	-0.088	0.140	0.224	198.554878	-17.768126	-1662.17	1853.22
6	GUIDE	801640632	9.59	1651	0.166	-0.079	0.101	0.158	198.658071	-17.751793	-1415.49	1594.64
7	GUIDE	801253520	7.61	1652	-0.355	0.113	0.059	0.096	199.689069	-17.133691	2407.31	-100.44

2.4 Star Slots

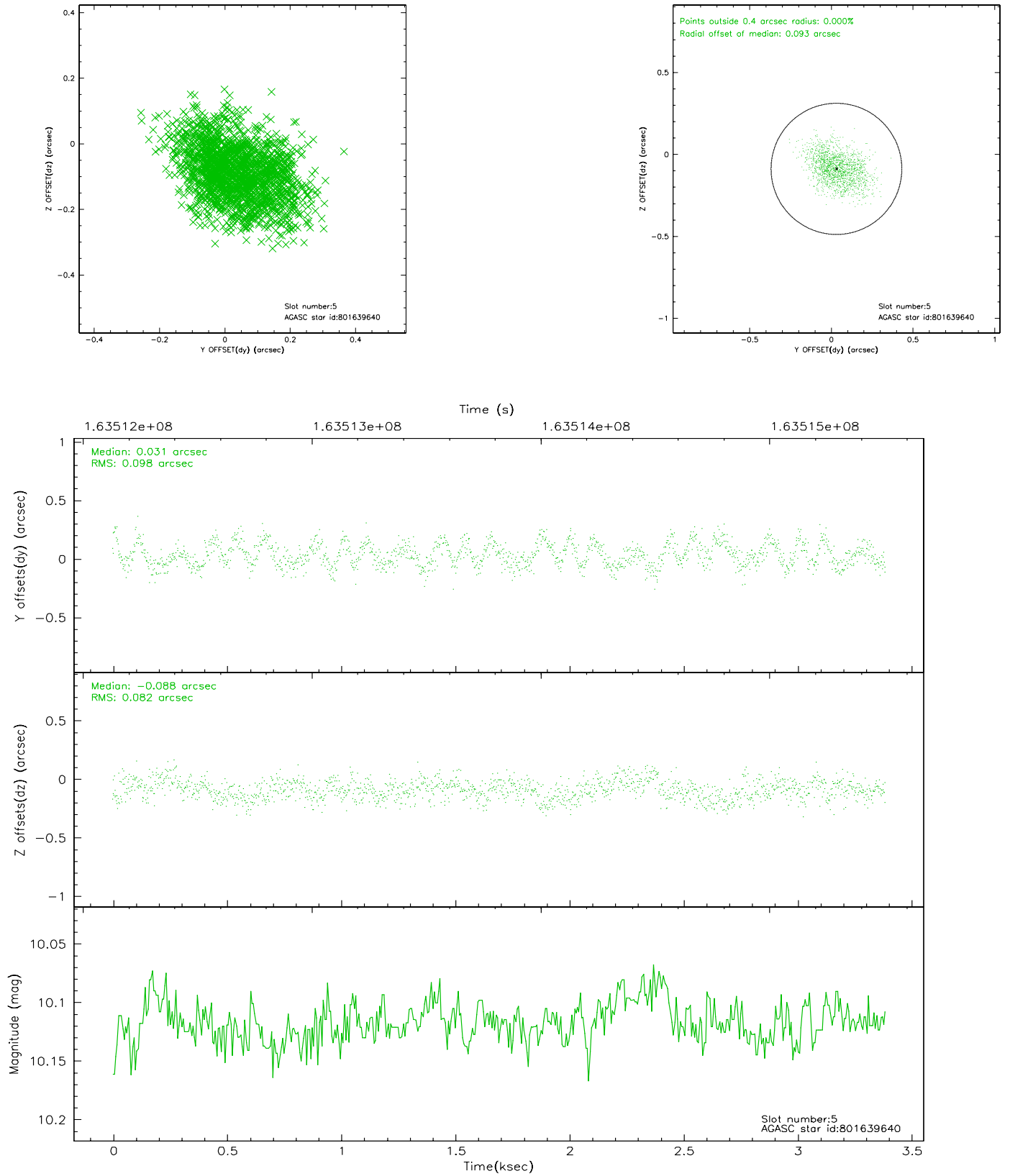
2.4.1 Slot 3



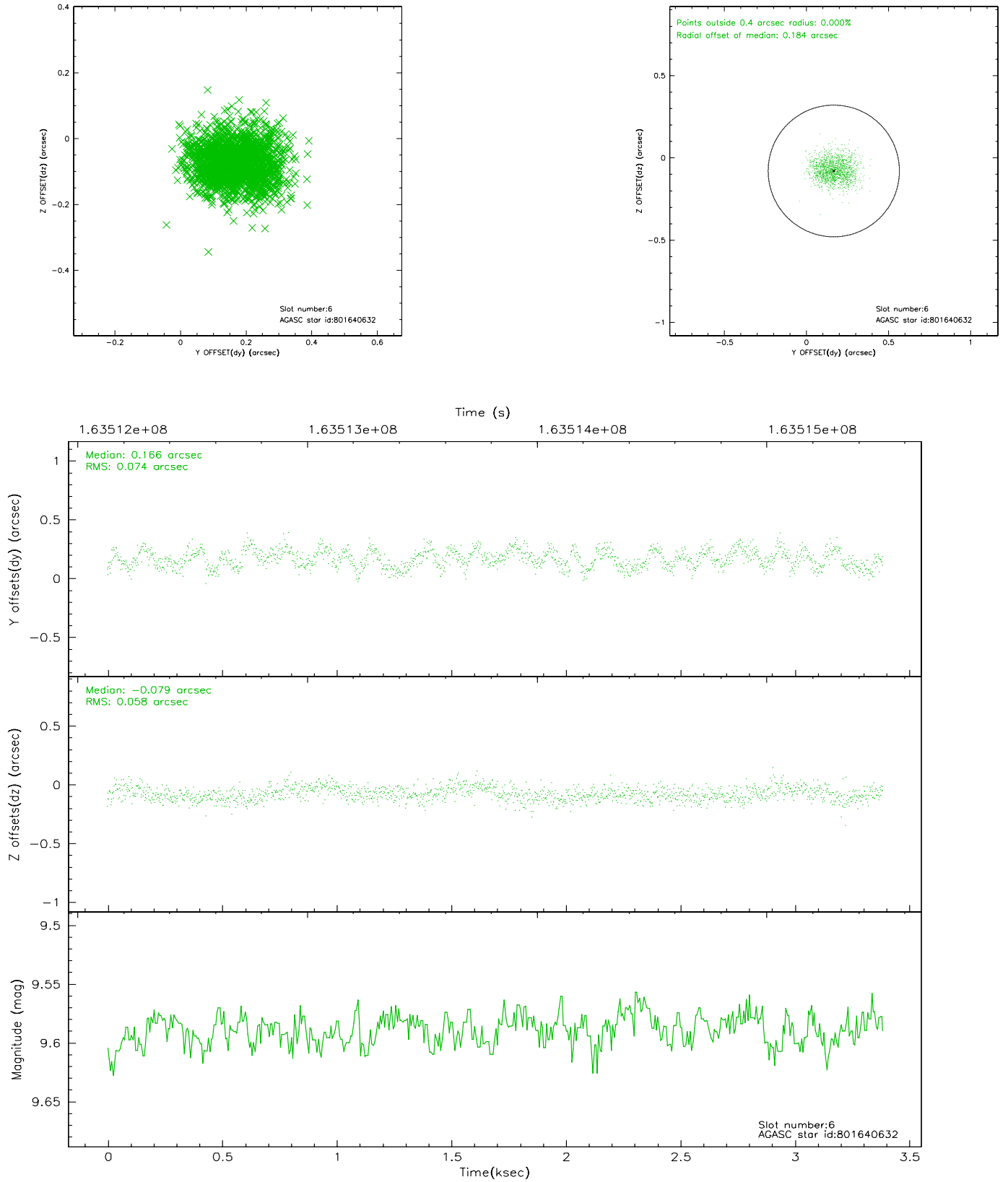
2.4.2 Slot 4



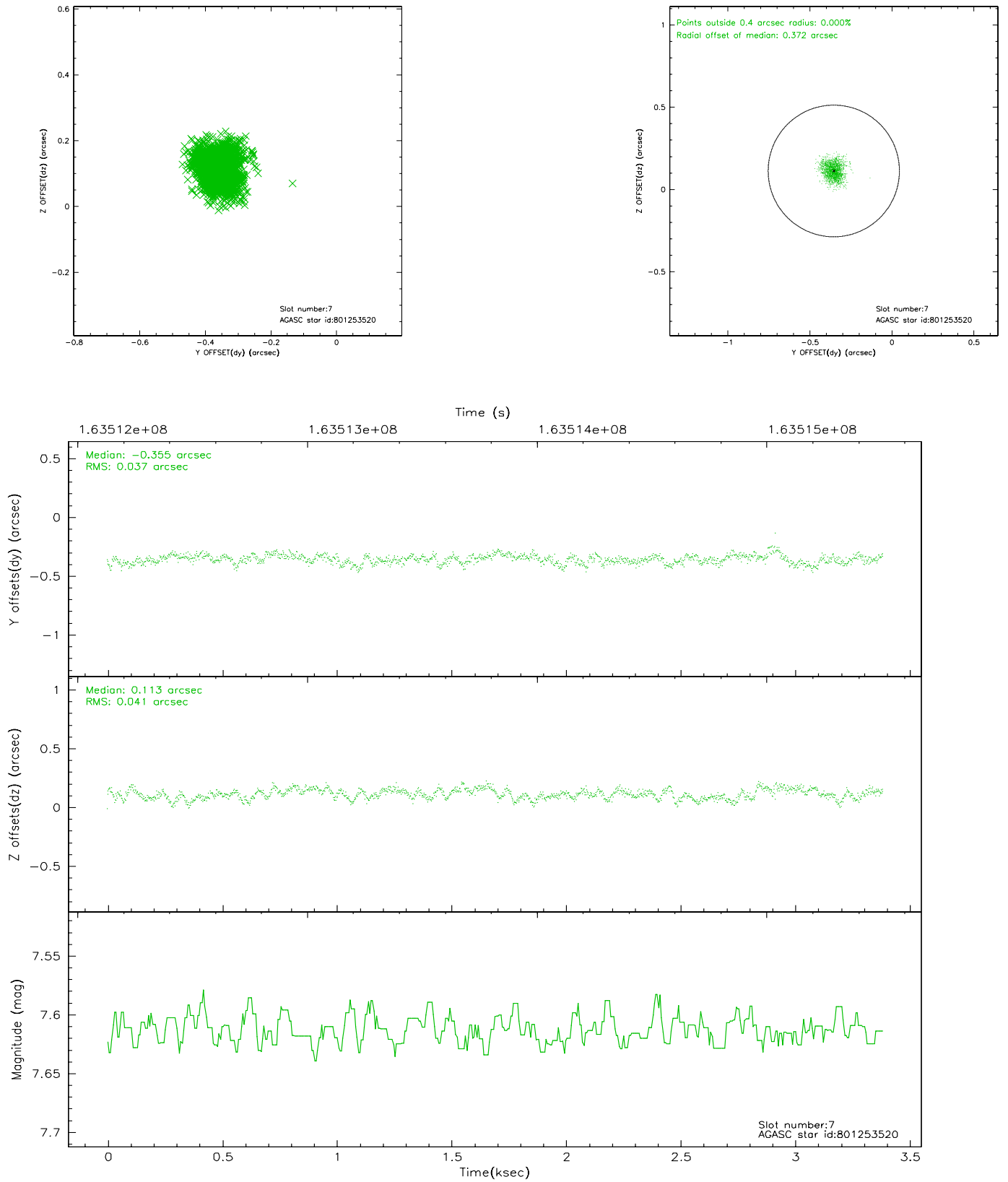
2.4.3 Slot 5



2.4.4 Slot 6

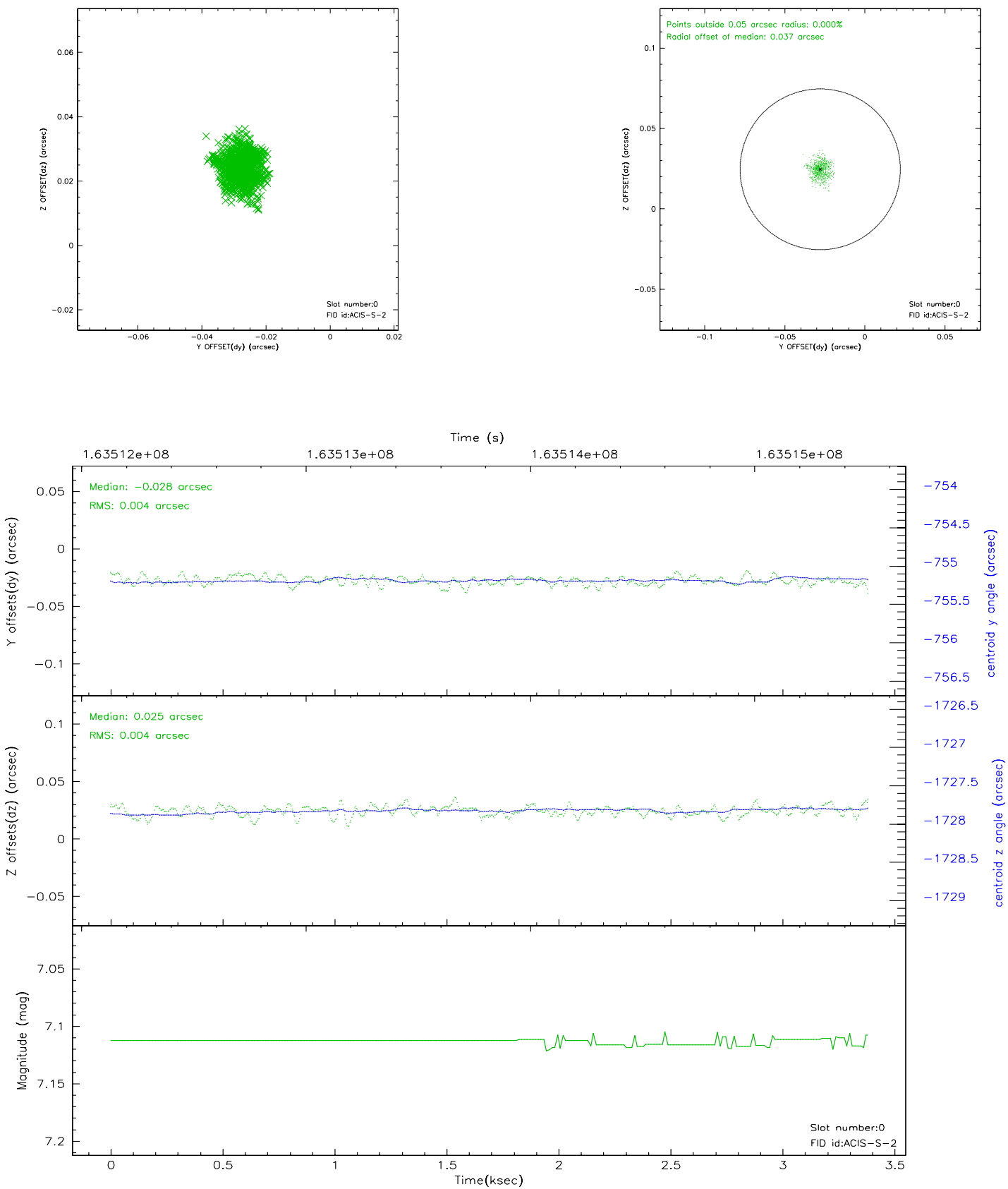


2.4.5 Slot 7

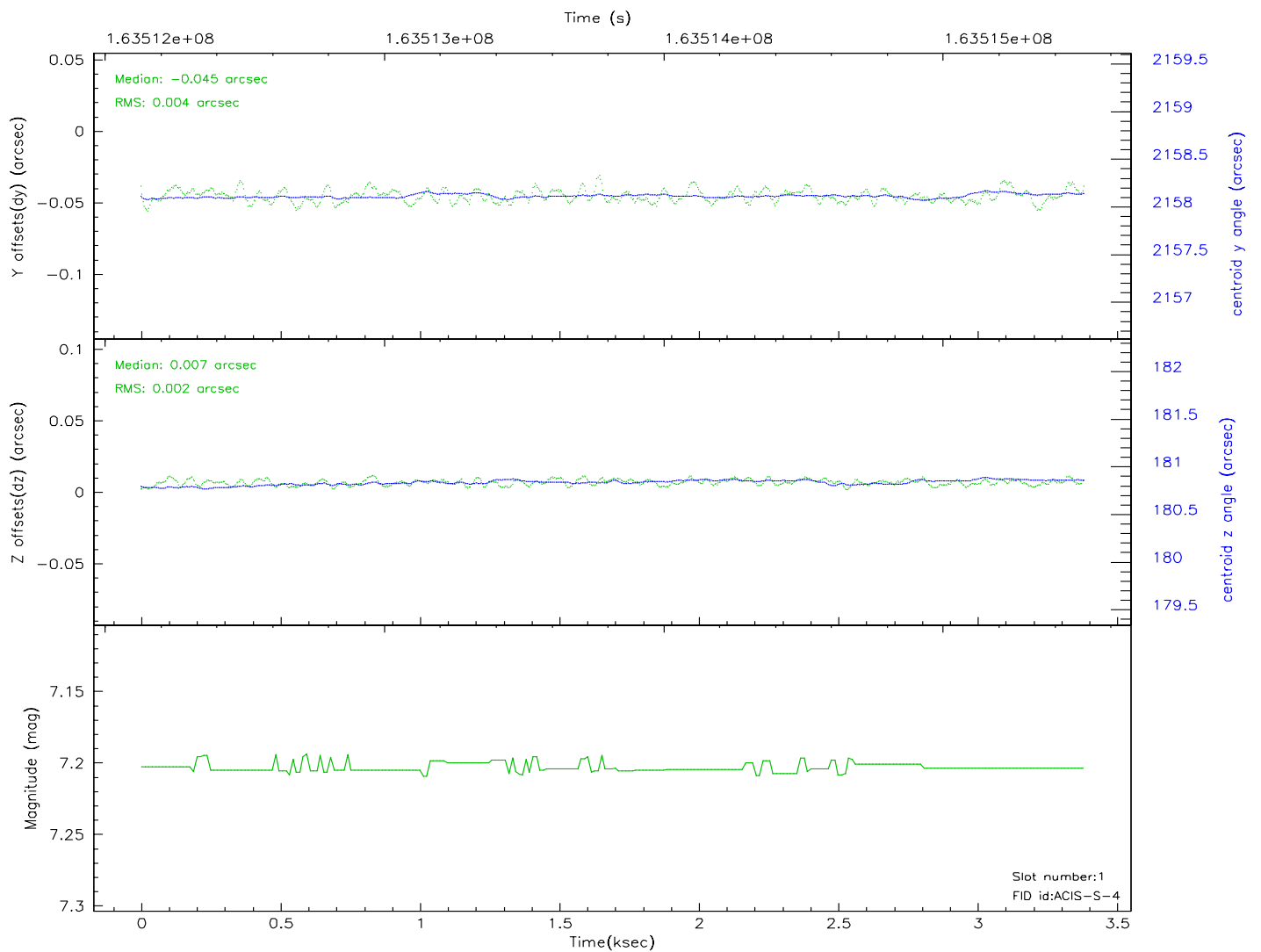
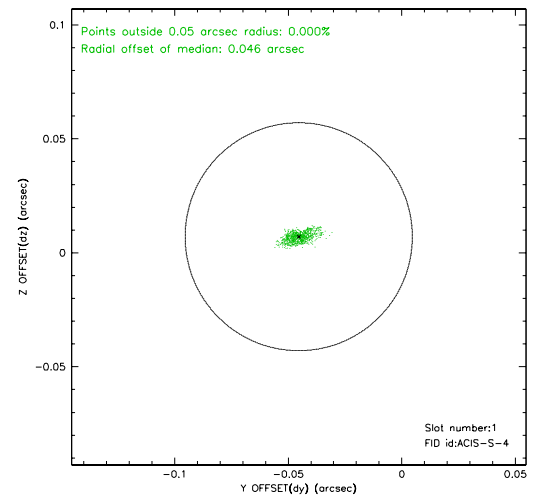
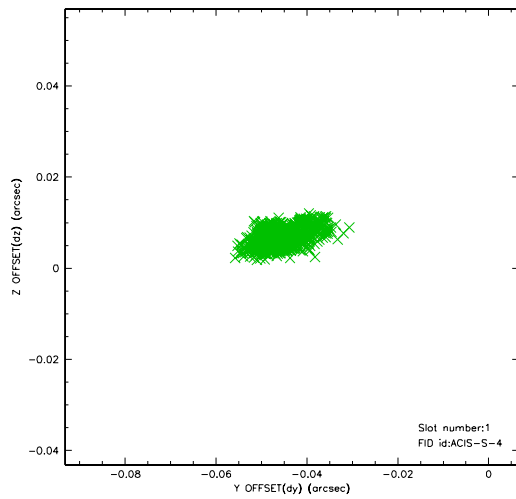


2.5 FID Slots

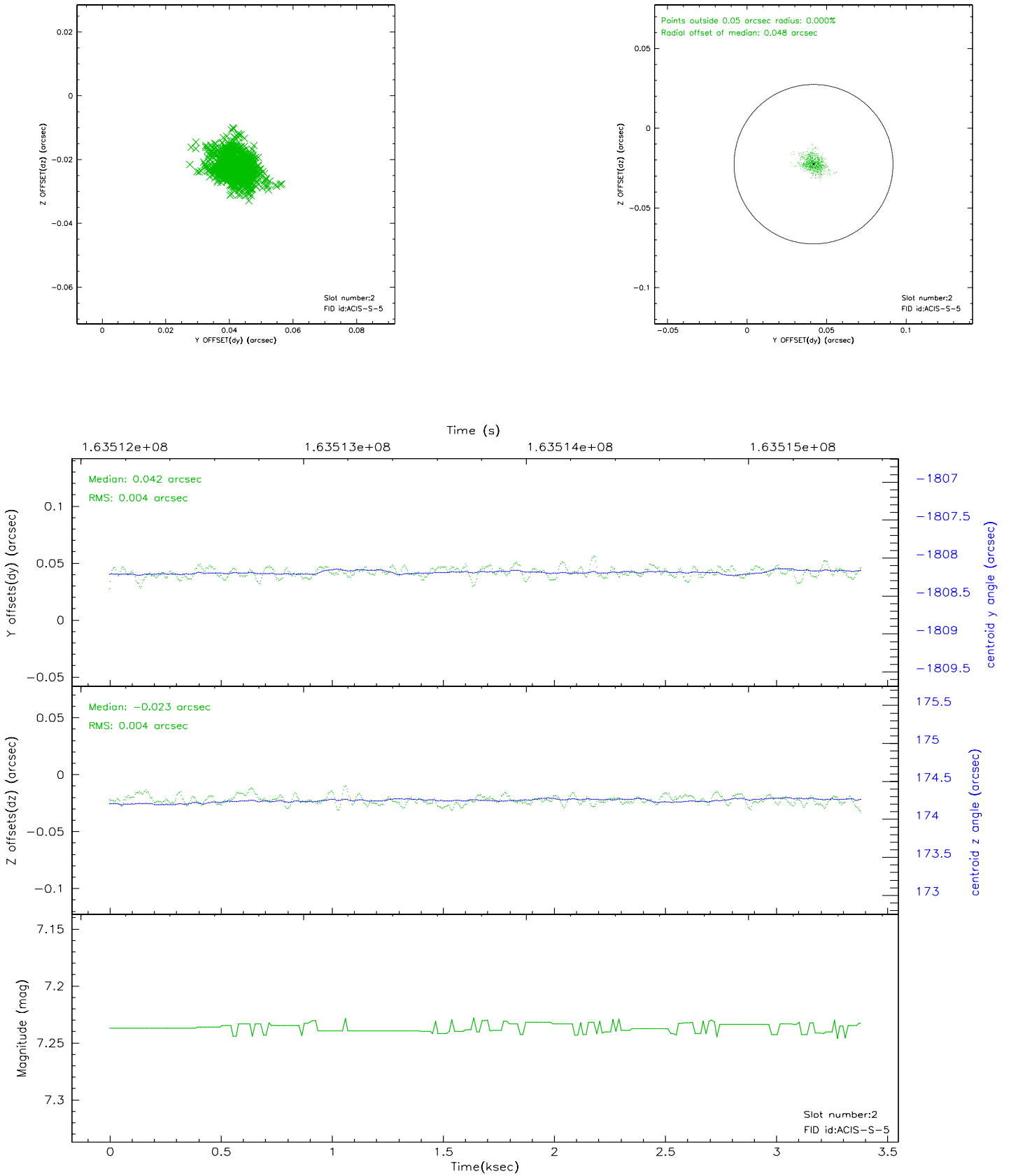
2.5.1 Slot 0



2.5.2 Slot 1



2.5.3 Slot 2



3 Point Sources

18.59 arcmin



A Summary

A.1 Status

V&V Scientist	Beth Sundheim
V&V Date (YYYY-MM-DD)	2006.07.23
V&V Edition	1
V&V Disposition and Status	OK
V&V Charge Time	2.956

A.2 Comments