

V&V Reference Report

L2 ASCDS Version : 7.6.8

Observation 4040 - L2 Version 001
Chandra X-Ray Center

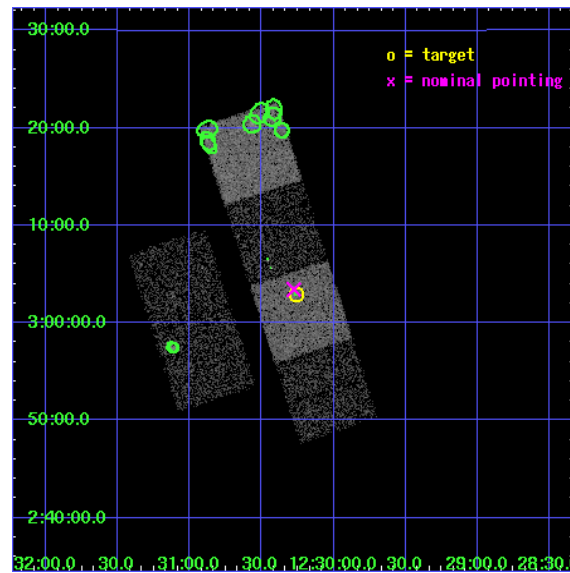
L2 Processing Date : Jul 20 2006

Contents

1	Front	2
2	OBI	3
2.1	OBI	3
2.1.1	Images	3
2.1.2	Bias	3
2.1.3	Parameters	4
2.1.4	Events	4
2.2	Compared Parameters	5
2.3	Aspect	6
2.4	Star Slots	9
2.4.1	Slot 3	9
2.4.2	Slot 4	10
2.4.3	Slot 5	11
2.4.4	Slot 6	12
2.4.5	Slot 7	13
2.5	FID Slots	14
2.5.1	Slot 0	14
2.5.2	Slot 1	15
2.5.3	Slot 2	16
3	Point Sources	17
A	Summary	18
A.1	Status	18
A.2	Comments	18

1 Front

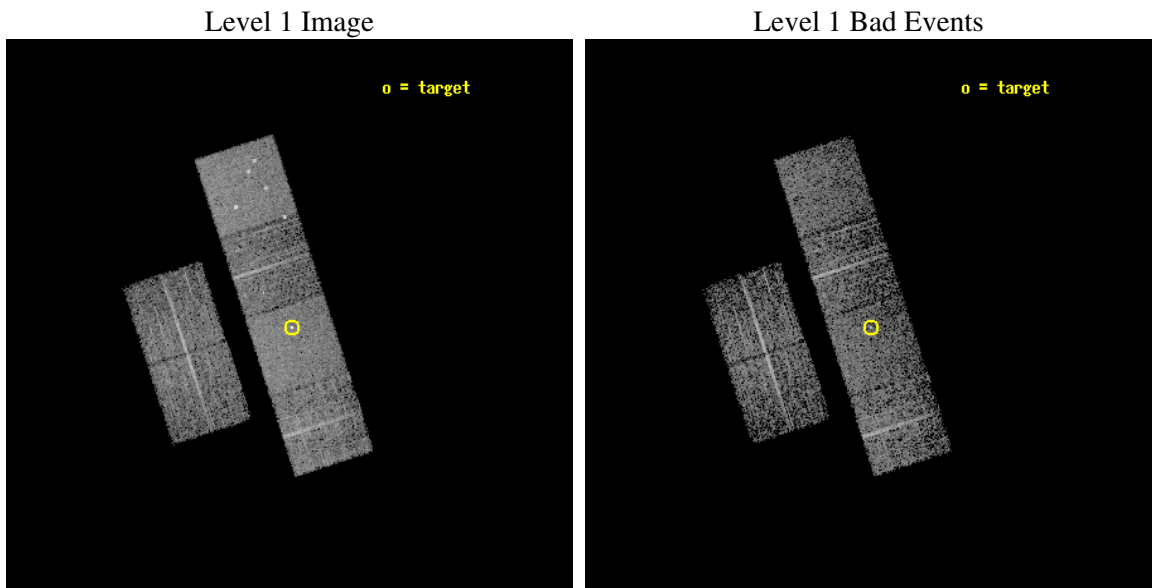
seq_num	700719
obs_id	4040
title	WHY DO WE SEE BROAD LINES IN X-RAY ABSORBED AGN?
observer	Dr. BELINDA WILKES
object	2MASS123016+030255
dtcycle	0
cycle	P
ra_targ	187.564583
dec_targ	3.048528
ra_nom	187.5691143176
dec_nom	3.0571907037863
roll_nom	72.104530525517
revision	2
ontime	3561.599986732
livetime	3516.500863162
ontime2	3561.599986732
ontime3	3561.599986732
ontime5	3561.599986732
ontime6	3561.599986732
ontime7	3561.599986732
ontime8	3561.599986732
l2events	36249



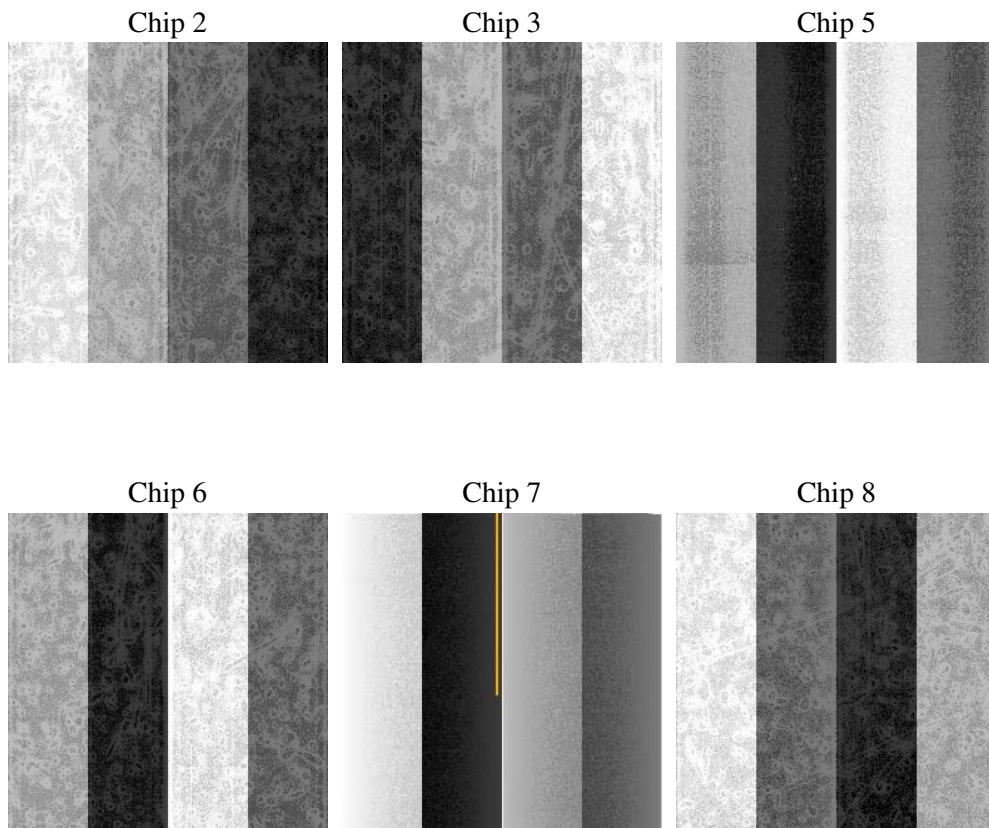
2 OBI

2.1 OBI

2.1.1 Images



2.1.2 Bias



2.1.3 Parameters

obi_num	0
ascdsver	7.6.8
caldsver	3.2.2
date	2006-07-20T21:39:31
revision	2

sched_exp_time	3450.000000
ontime	3678.536264658
ontime2	3678.536264658
ontime3	3678.536264658
ontime5	3678.536264658
ontime6	3678.536264658
ontime7	3678.536264658
ontime8	3678.536264658
l1events	169800

2.1.4 Events

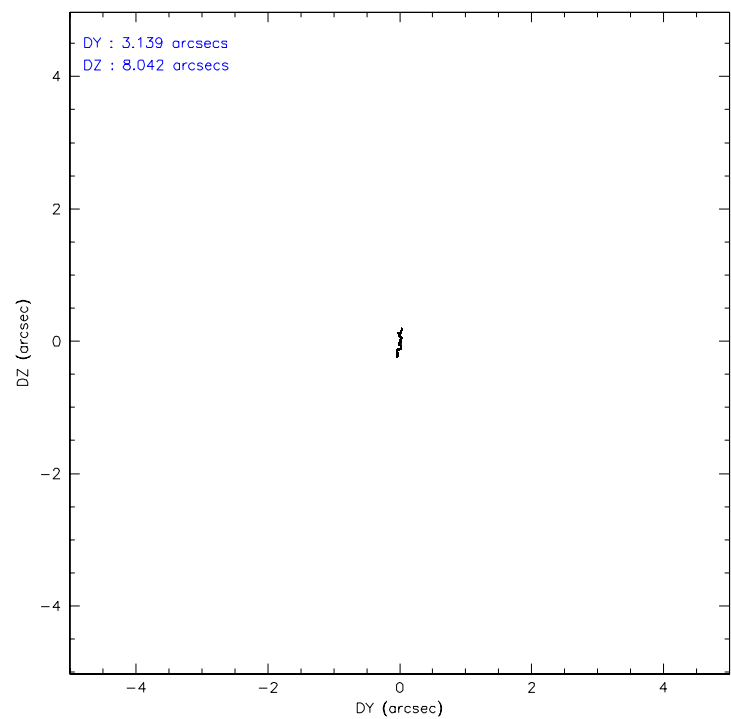
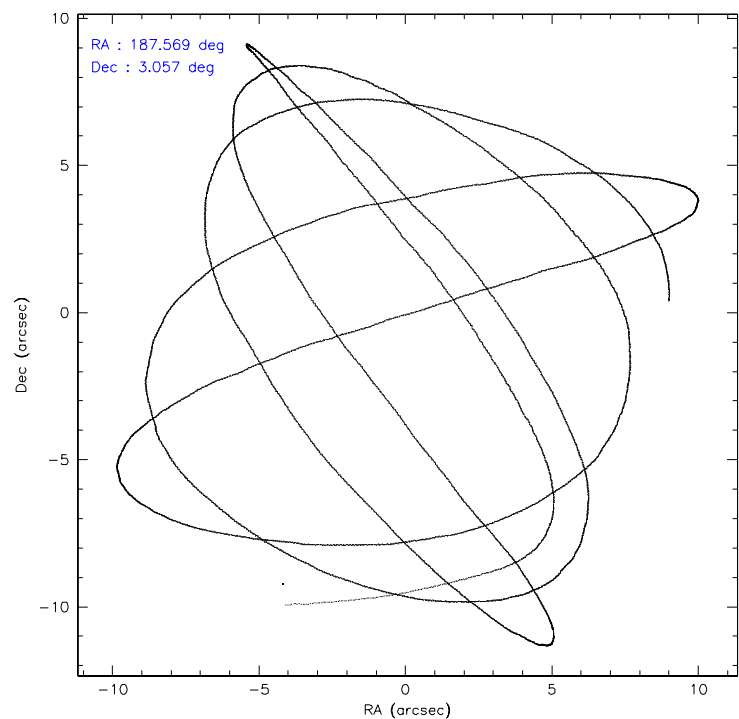
	ccd 2	ccd 3	ccd 5	ccd 6	ccd 7	ccd 8
level 1 events	23961	23227	36495	23291	33053	29773
rejected events	21245	20463	20398	20393	20542	23806
rejected %	88%	88%	55%	87%	62%	79%

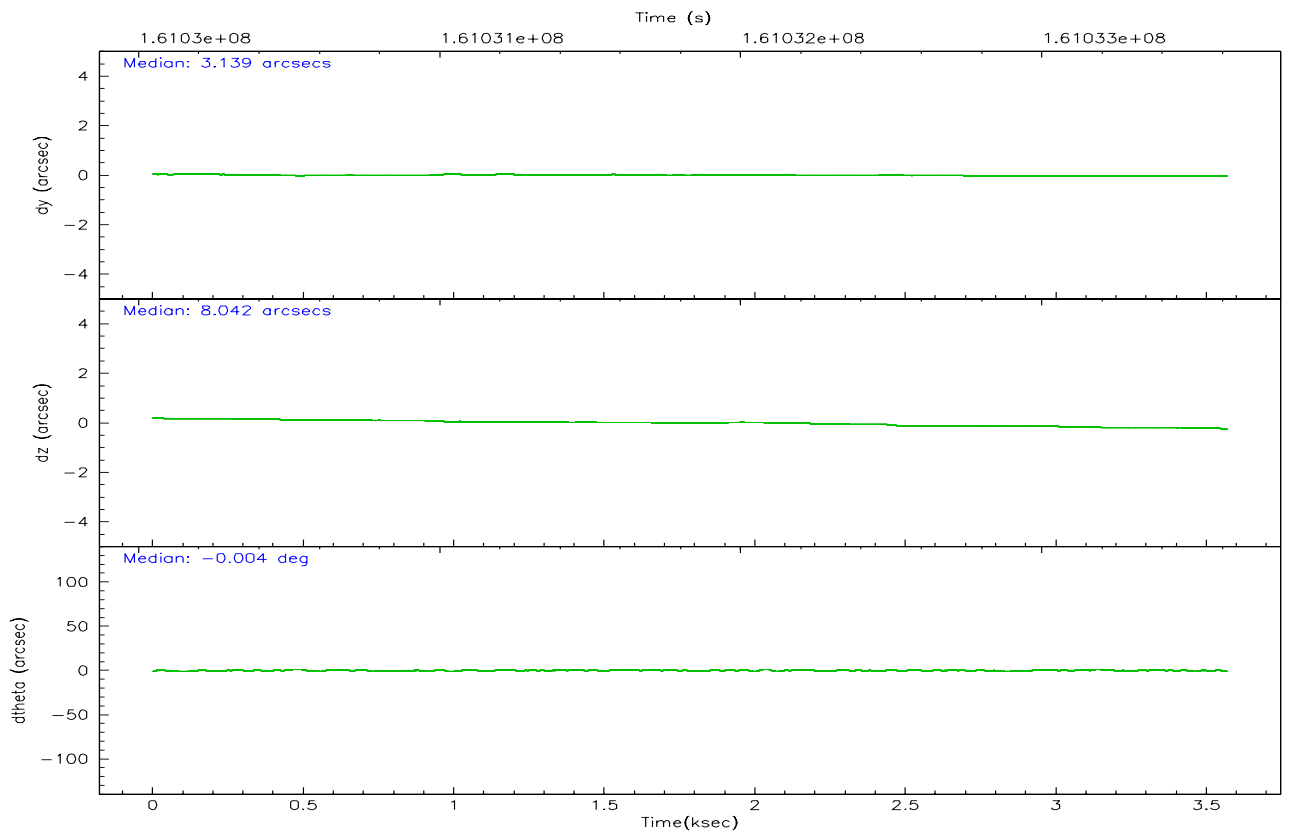
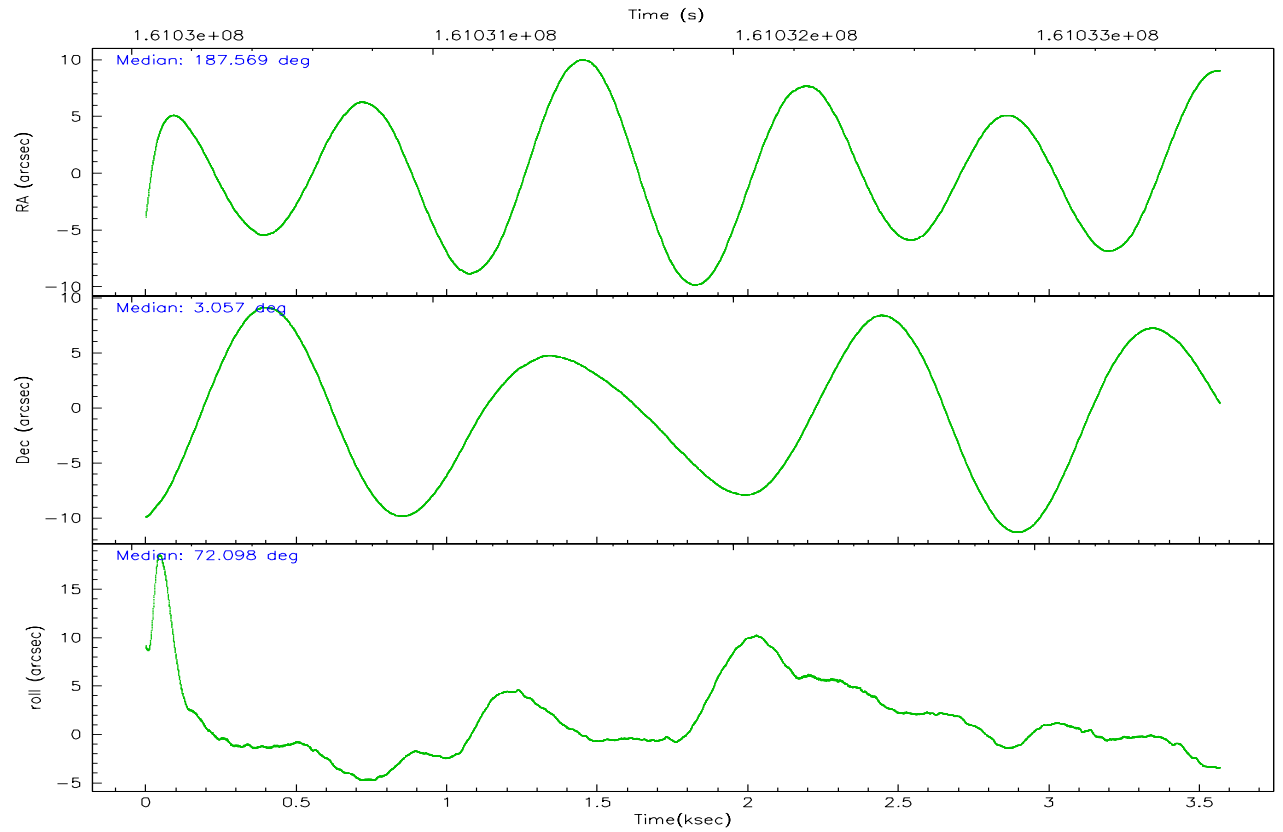
	ccd 2	ccd 3	ccd 5	ccd 6	ccd 7	ccd 8
grade 0 events	1258	1313	2274	1274	908	1983
	5%	5%	6%	5%	2%	6%
grade 1 events	13	10	37	17	29	18
	0%	0%	0%	0%	0%	0%
grade 2 events	587	505	4952	588	3108	1297
	2%	2%	13%	2%	9%	4%
grade 3 events	269	289	368	285	744	649
	1%	1%	1%	1%	2%	2%
grade 4 events	266	249	351	286	660	665
	1%	1%	0%	1%	1%	2%
grade 5 events	902	953	1764	1091	2306	1284
	3%	4%	4%	4%	6%	4%
grade 6 events	436	496	8692	568	7514	1533
	1%	2%	23%	2%	22%	5%
grade 7 events	20230	19412	18057	19182	17784	22344
	84%	83%	49%	82%	53%	75%

2.2 Compared Parameters

Parameter	Planned	Actual	Parameter	Planned	Actual
Instrument	ACIS	ACIS	Obspar format version number	6	6
Detector	ACIS-235678	ACIS-235678	Obspar file type	PREDICTED	ACTUAL
Grating	NONE	NONE	Obspar update status	NONE	UPDATED
Data mode	FAINT	FAINT	On-chip summing requested	N	N
Observation mode	POINTING	POINTING	Subarray requested	NONE	NONE
Pointing RA	187.575202	187.5691143175953	Alternating exposures requested	N	N
Pointing Dec	3.030521	3.057190703786289	Primary exposure time	0.000000	3.2
Pointing Roll	71.947541	72.10453052551661			
SIM focus pos (mm)	-0.684267	-0.6828225247311905			
SIM defocus (mm)	0	0.001444936568705701			
SIM translation stage pos (mm)	-190.132523	-190.1400660498719			
SIM translation stage offset (mm)	0	0.00754346686406393			
Observation start time	161030168.184000	161029073.67893			
Observation start date	2003-02-07T18:35:04	2003-02-07T18:17:53			
Observation end time	161033618.184000	161034154.60414			
Observation end date	2003-02-07T19:32:34	2003-02-07T19:42:34			
Read mode	TIMED	TIMED			

2.3 Aspect



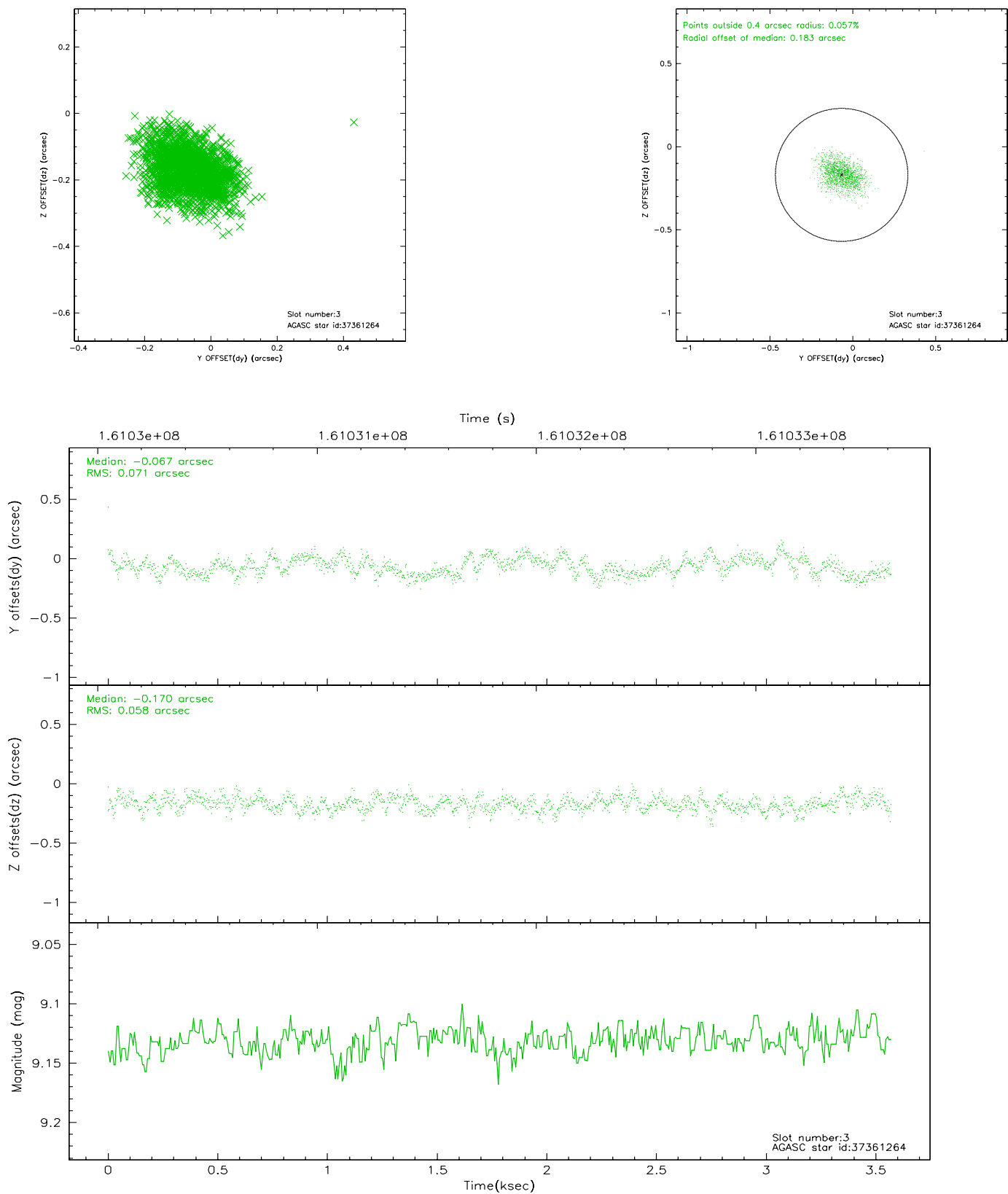


Slot Statistics

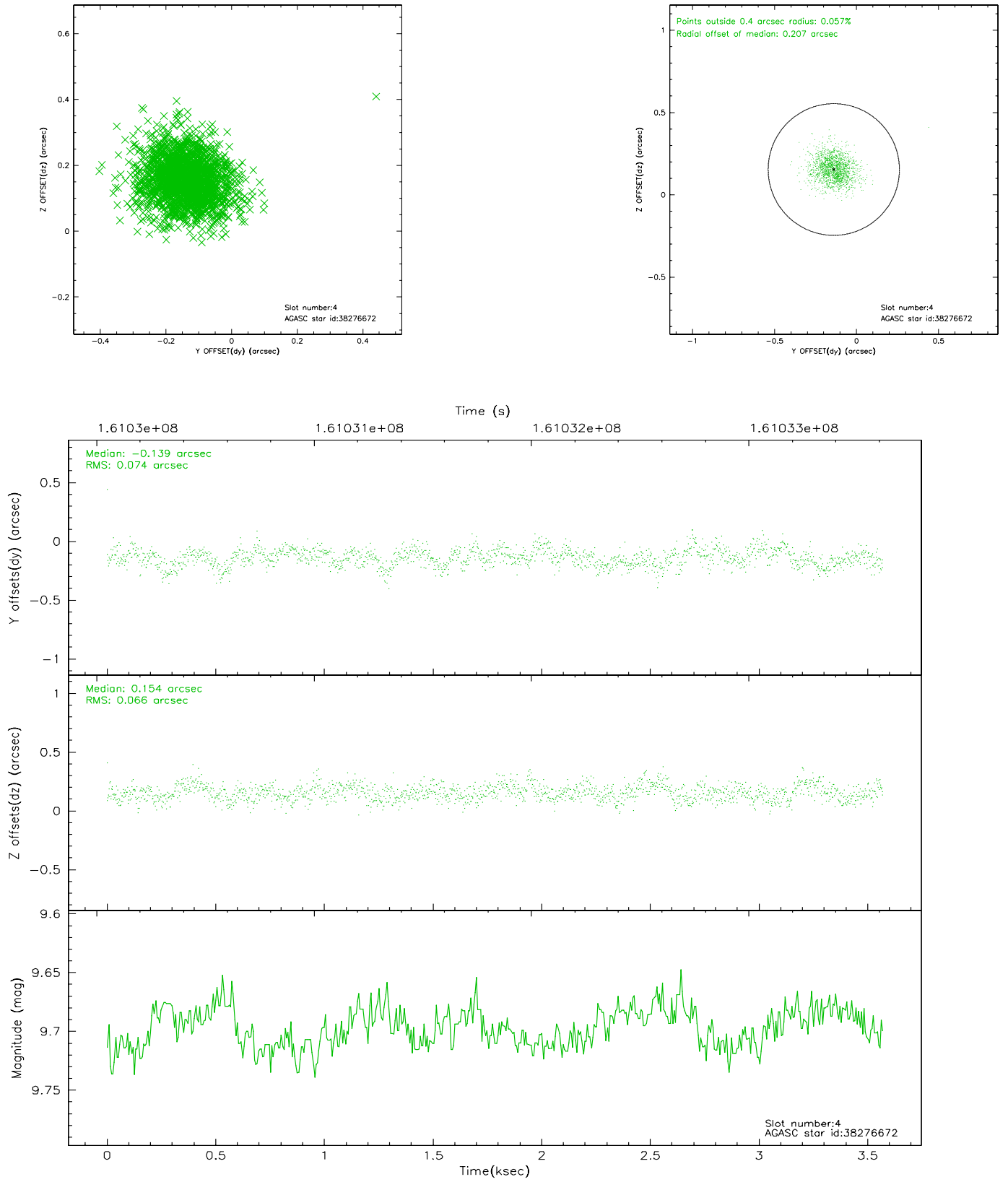
slot	status	id	mag	n_pts	med_dy	med_dz	dr1	dr2	ra	dec	mean_y	mean_z
0	FID	ACIS-S-2	7.11	871	0.001	0.012	0.007	0.011	0.000000	0.000000	-755.78	-1729.21
1	FID	ACIS-S-4	7.20	871	-0.048	-0.004	0.005	0.009	0.000000	0.000000	2156.65	177.43
2	FID	ACIS-S-5	7.24	871	0.015	0.000	0.006	0.011	0.000000	0.000000	-1806.33	173.12
3	GUIDE	37361264	9.13	1741	-0.067	-0.170	0.098	0.154	187.071456	3.270817	261.33	1989.61
4	GUIDE	38276672	9.70	1742	-0.139	0.154	0.104	0.172	188.117492	3.340615	1665.60	-1504.91
5	GUIDE	37363176	10.10	1739	0.022	-0.119	0.121	0.195	187.349750	3.163657	205.27	918.19
6	GUIDE	37356352	7.64	1742	0.006	-0.037	0.063	0.097	187.433784	2.618460	-1568.09	24.33
7	GUIDE	37880408	10.07	1738	0.183	0.166	0.153	0.244	187.758191	2.290324	-2330.39	-1451.43

2.4 Star Slots

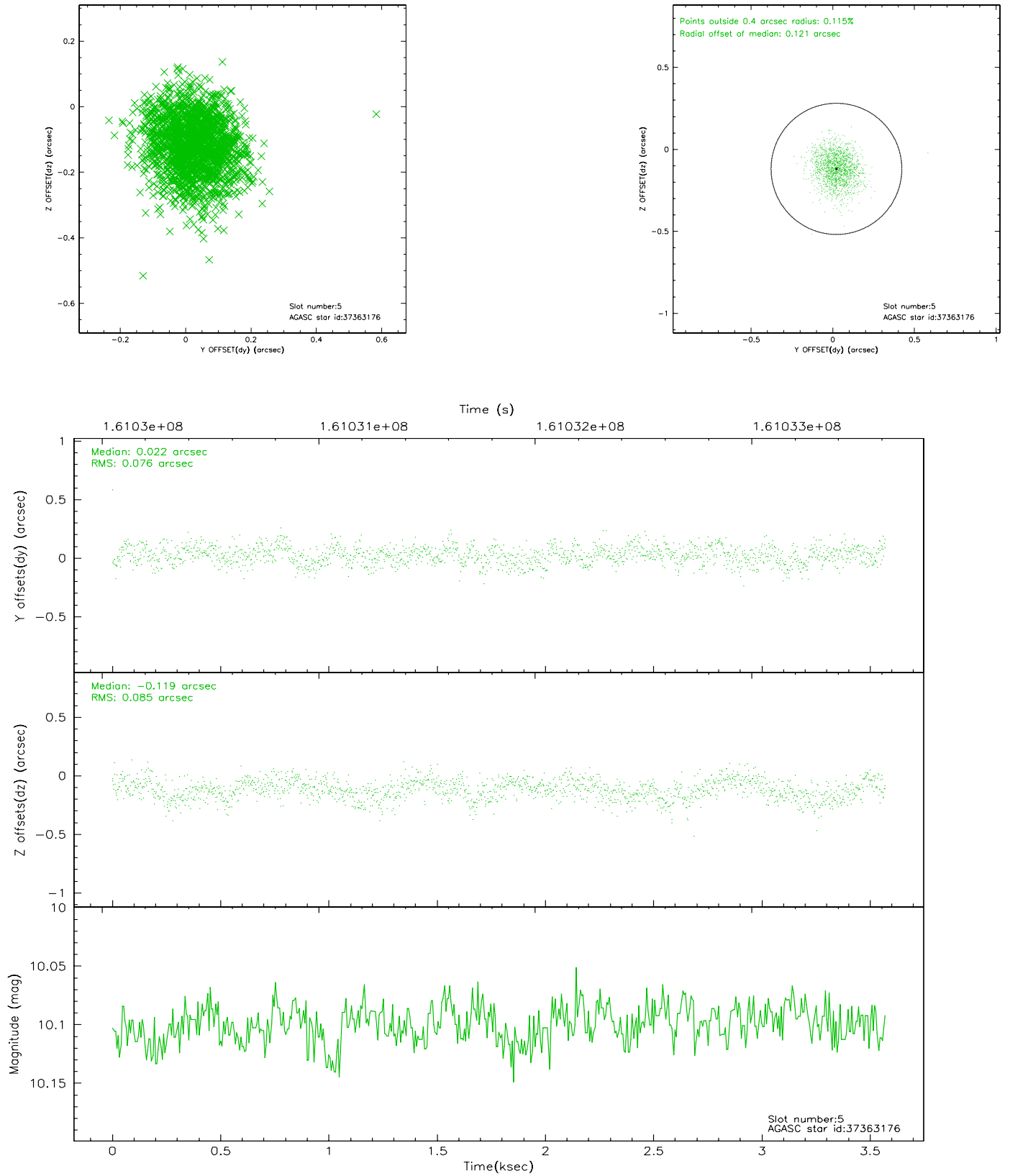
2.4.1 Slot 3



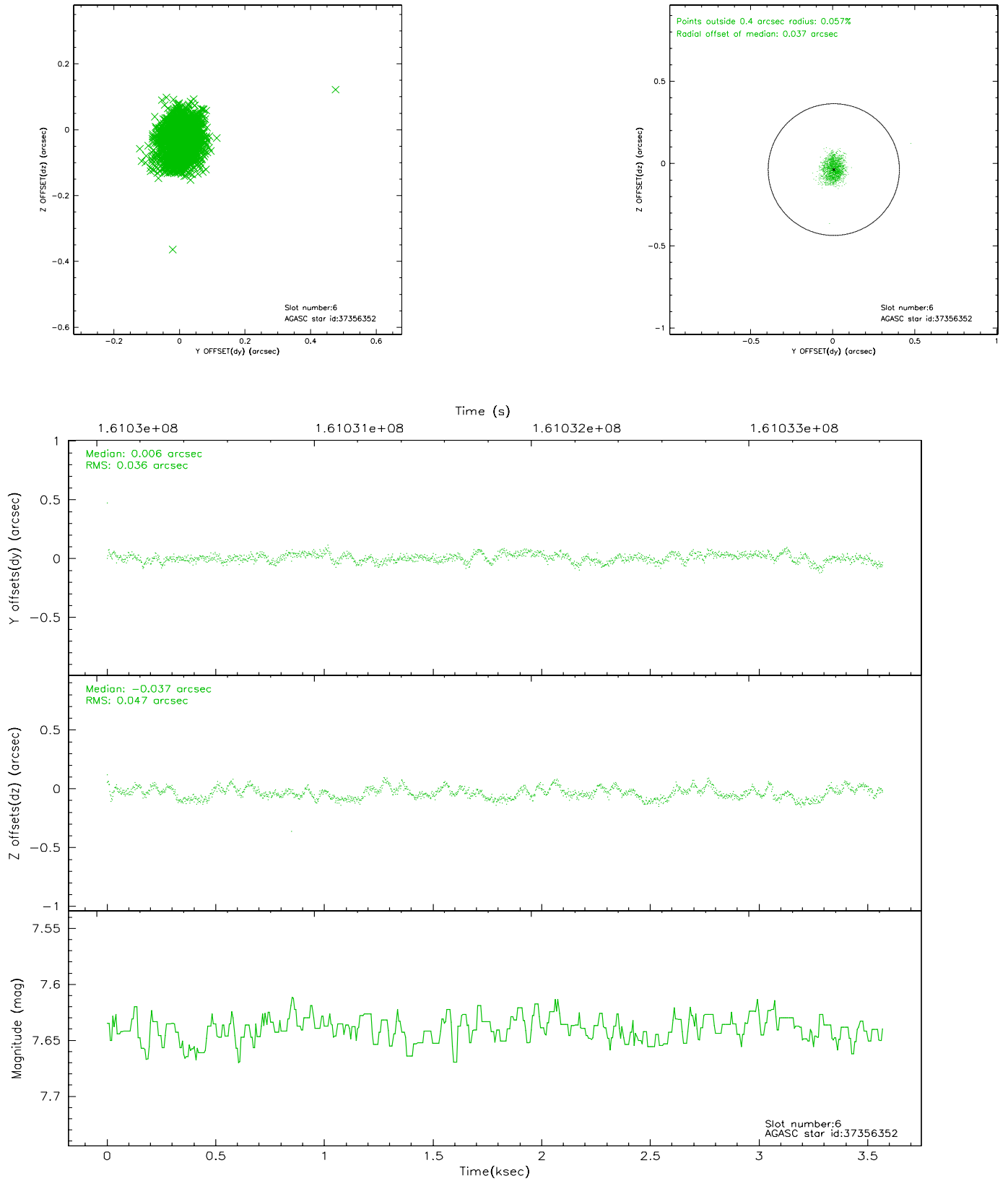
2.4.2 Slot 4



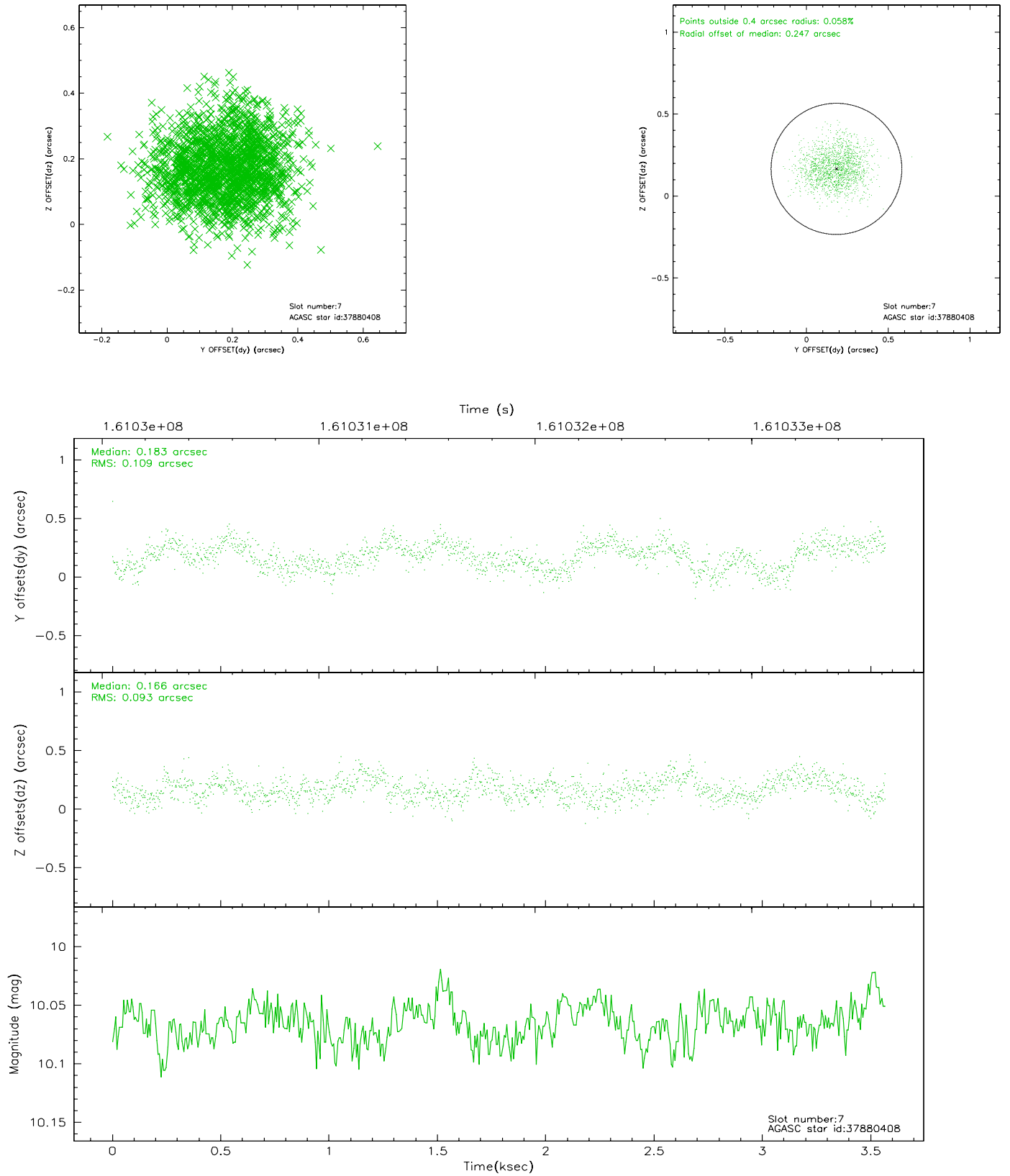
2.4.3 Slot 5



2.4.4 Slot 6

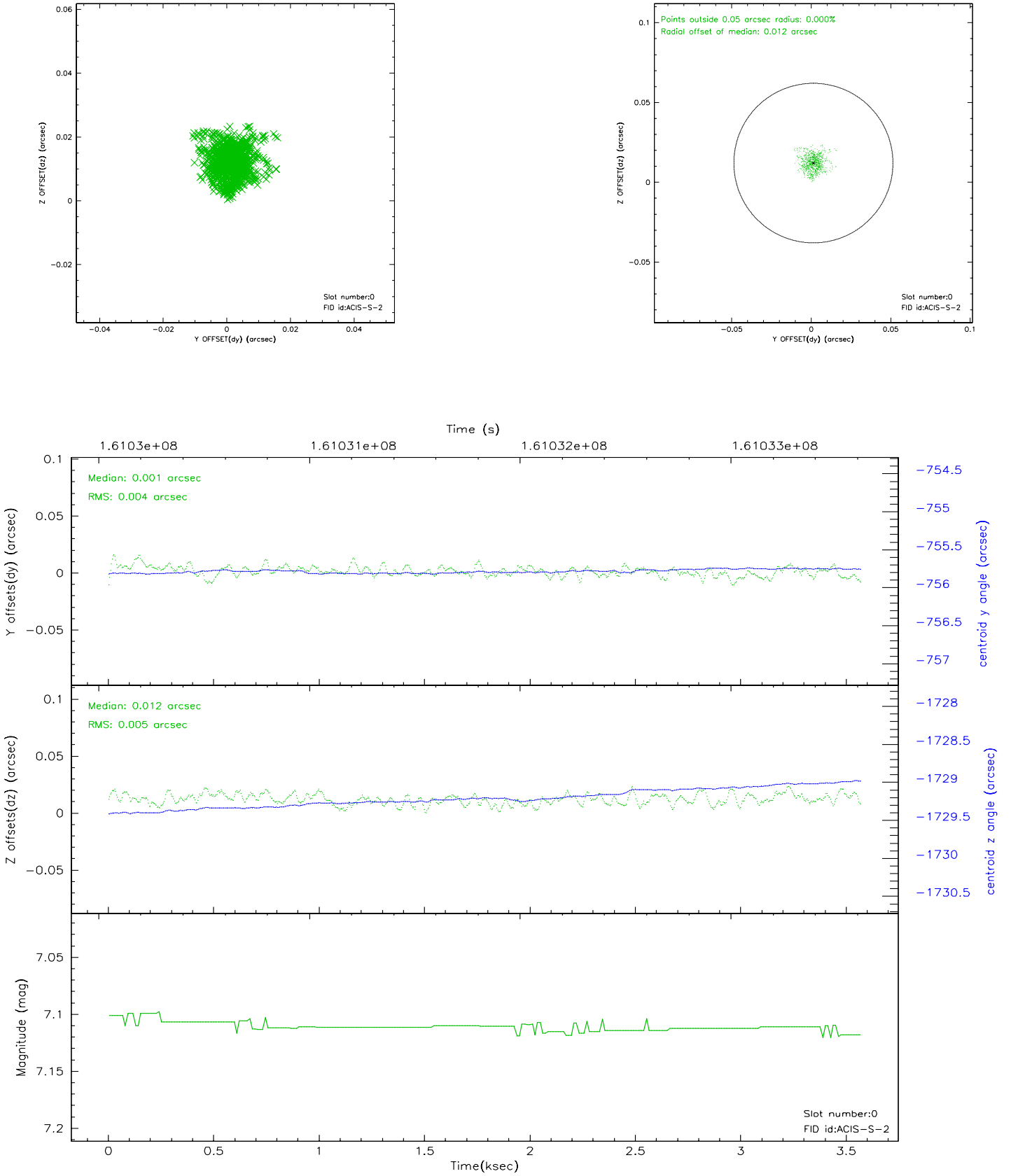


2.4.5 Slot 7

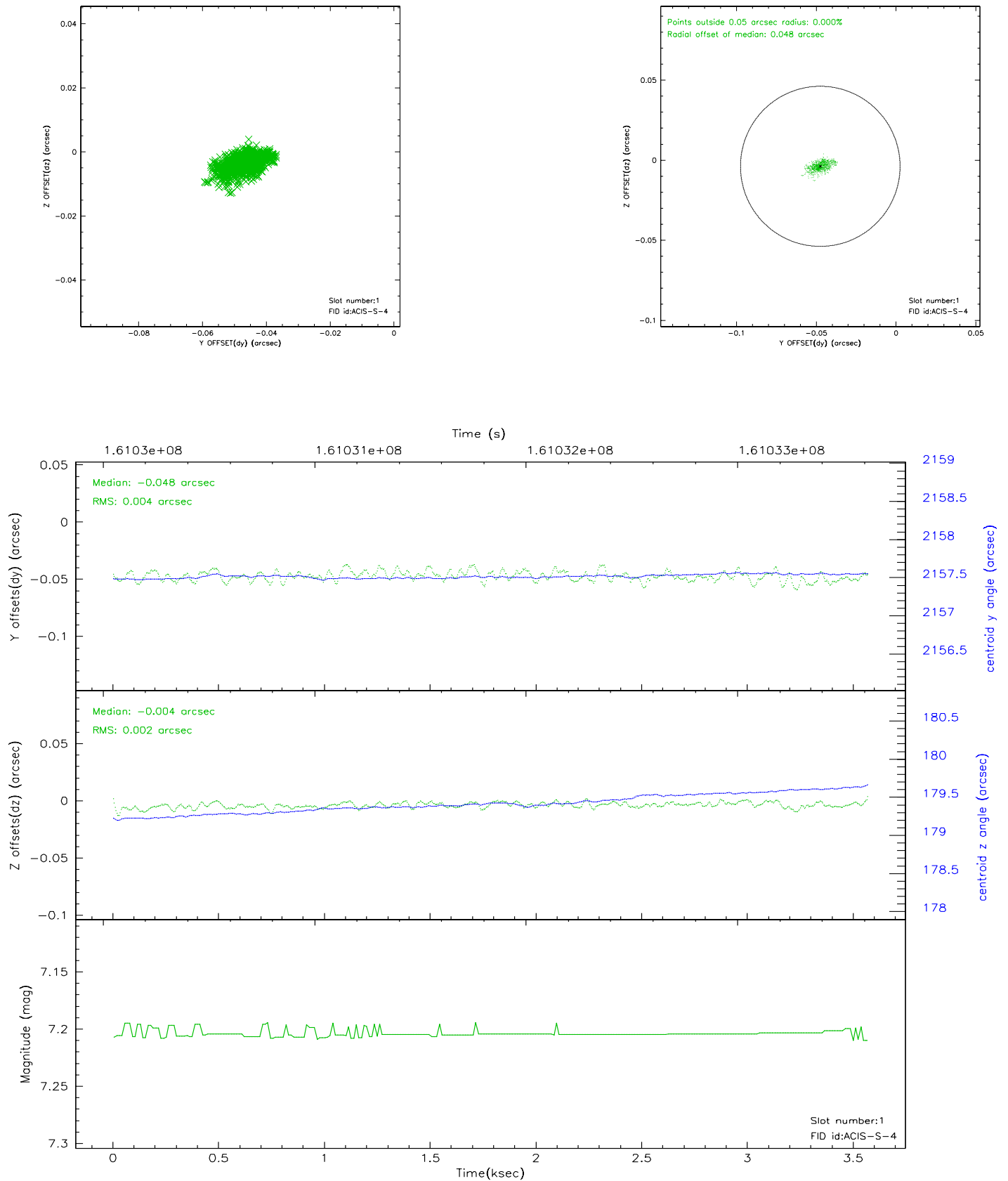


2.5 FID Slots

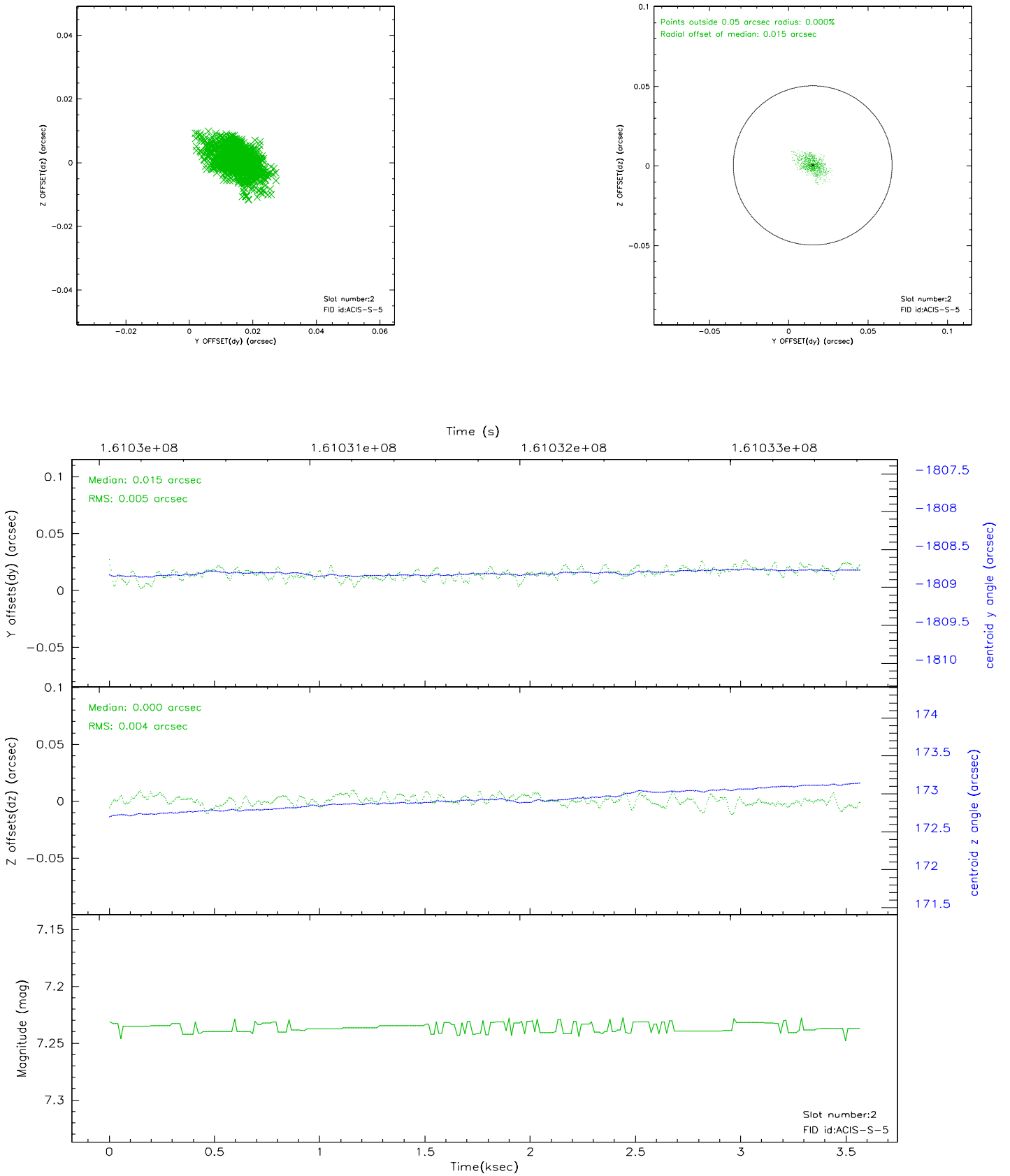
2.5.1 Slot 0



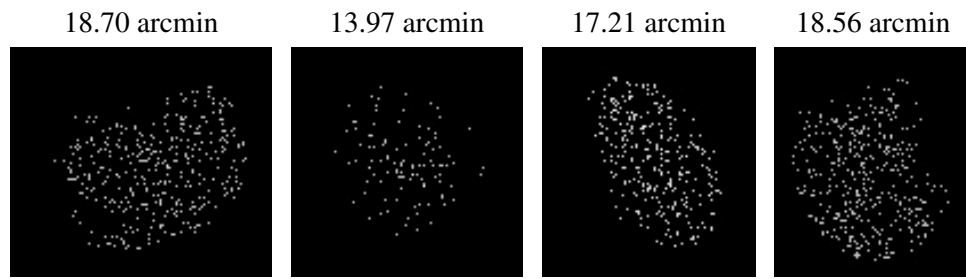
2.5.2 Slot 1



2.5.3 Slot 2



3 Point Sources



A Summary

A.1 Status

V&V Scientist	Joy Nichols
V&V Date (YYYY-MM-DD)	2006.07.21
V&V Edition	1
V&V Disposition and Status	OK
V&V Charge Time	3.561

A.2 Comments