

V&V Reference Report

L2 ASCDS Version : 7.6.9

Observation 4034 - L2 Version 001
Chandra X-Ray Center

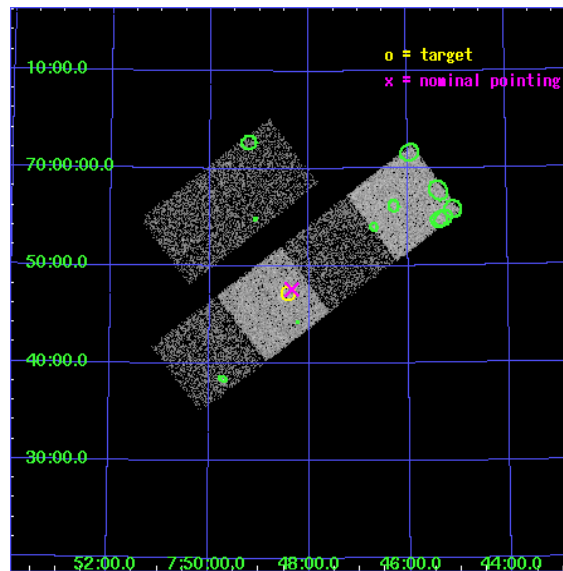
L2 Processing Date : Oct 15 2006

Contents

1	Front	2
2	OBI	3
2.1	OBI	3
2.1.1	Images	3
2.1.2	Bias	3
2.1.3	Parameters	4
2.1.4	Events	4
2.2	Compared Parameters	5
2.3	Aspect	6
2.4	Star Slots	9
2.4.1	Slot 3	9
2.4.2	Slot 4	10
2.4.3	Slot 5	11
2.4.4	Slot 6	12
2.4.5	Slot 7	13
2.5	FID Slots	14
2.5.1	Slot 0	14
2.5.2	Slot 1	15
2.5.3	Slot 2	16
3	Point Sources	17
A	Summary	18
A.1	Status	18
A.2	Comments	18

1 Front

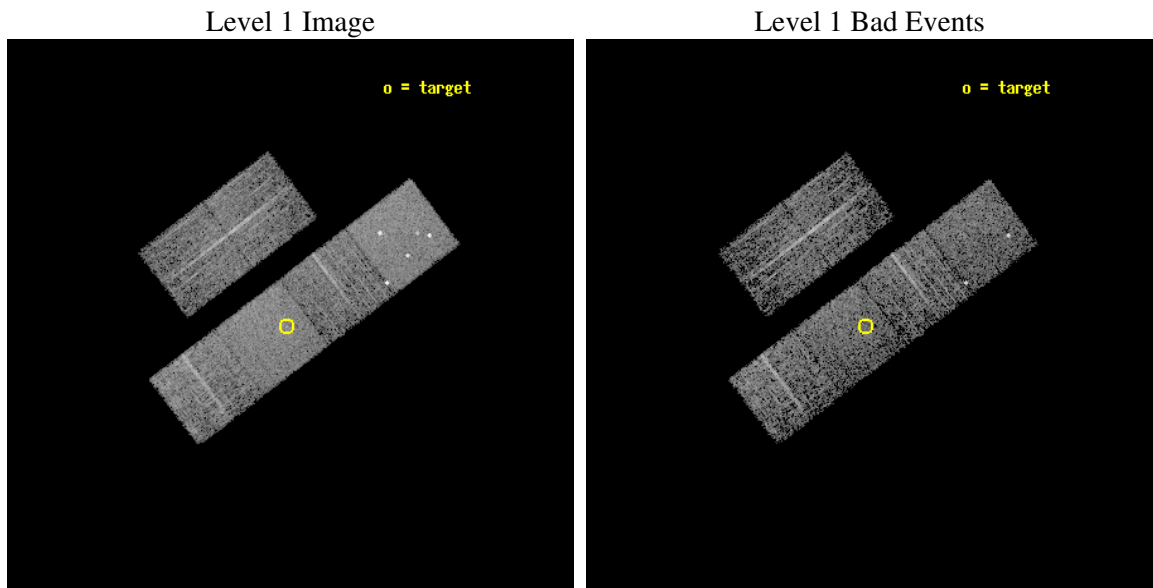
seq_num	700713
obs_id	4034
title	WHY DO WE SEE BROAD LINES IN X-RAY ABSORBED AGN?
observer	Dr. BELINDA WILKES
object	2MASS074825+694712
dtcycle	0
cycle	P
ra_targ	117.105
dec_targ	69.786722
ra_nom	117.08588887191
dec_nom	69.793822956146
roll_nom	142.6821461595
revision	2
ontime	4131.1999846101
livetime	4078.888242895
ontime2	4131.1999846101
ontime3	4131.1999846101
ontime5	4131.1999846101
ontime6	4131.1999846101
ontime7	4131.1999846101
ontime8	4131.1722574234
l2events	38489



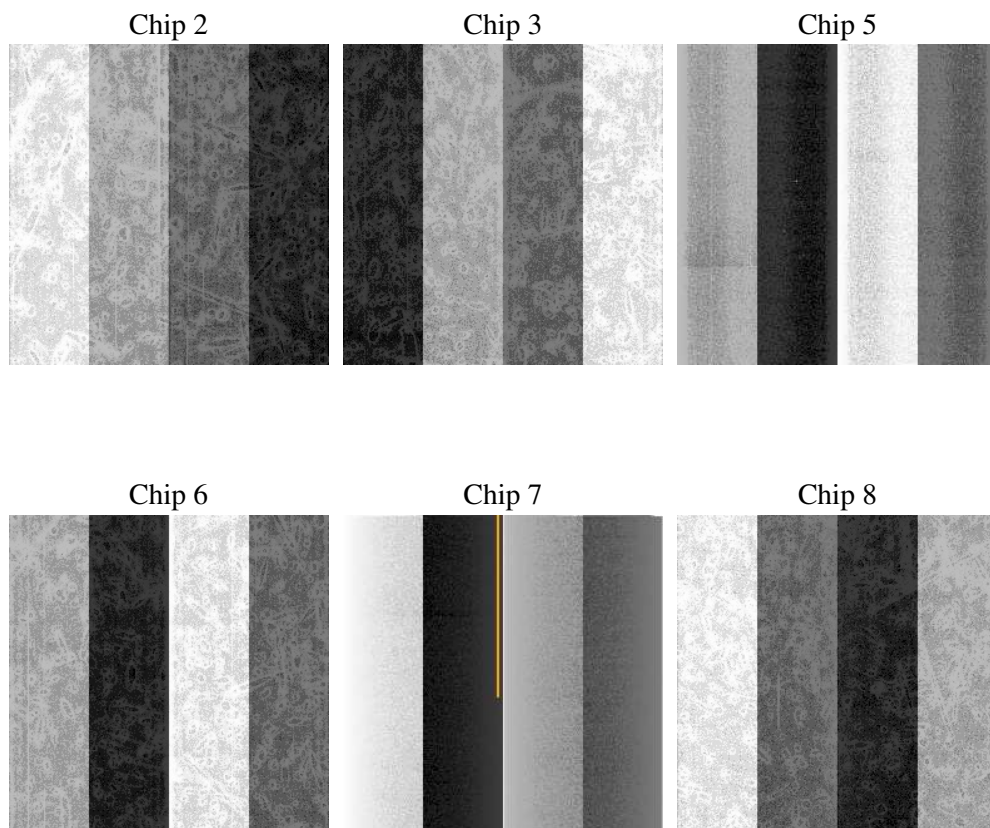
2 OBI

2.1 OBI

2.1.1 Images



2.1.2 Bias



2.1.3 Parameters

obi_num	0
ascdsver	7.6.9
caldsver	3.2.3
date	2006-10-15T05:13:54
revision	2

sched_exp_time	4169.000000
ontime	4135.5174527764
ontime2	4135.5174527764
ontime3	4135.5174527764
ontime5	4135.5174527764
ontime6	4135.5174228549
ontime7	4135.5174527764
ontime8	4135.5174527764
l1events	180167

2.1.4 Events

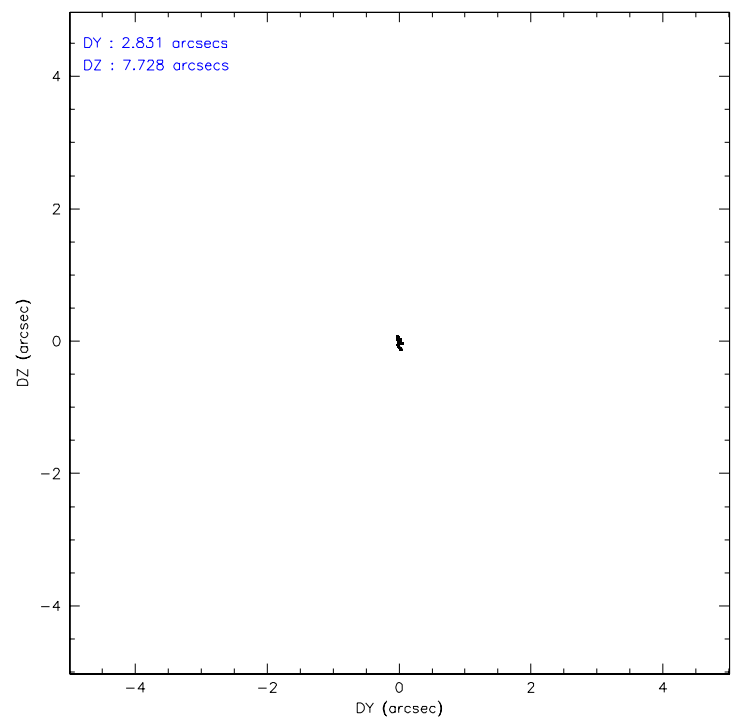
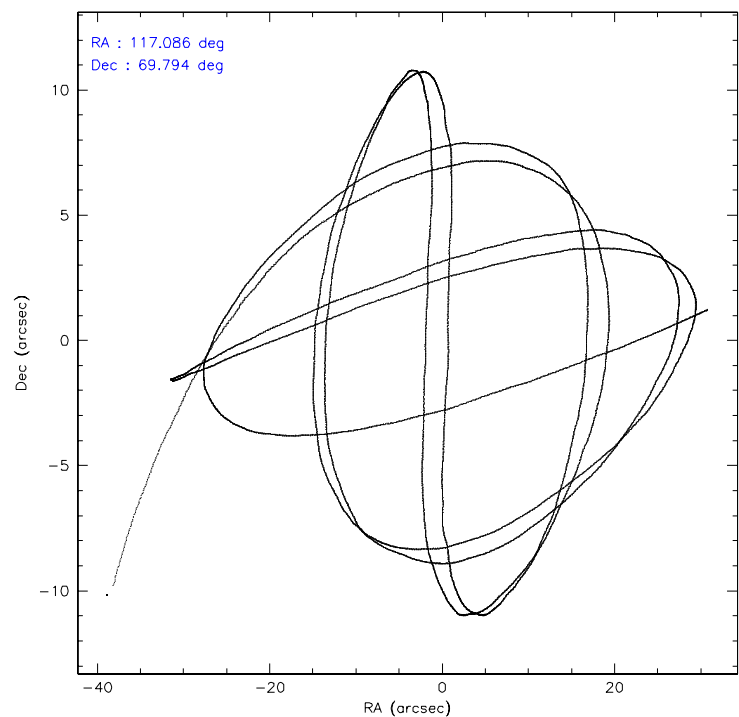
	ccd 2	ccd 3	ccd 5	ccd 6	ccd 7	ccd 8
level 1 events	25301	24170	39888	26243	33337	31228
rejected events	22322	21266	21338	23259	20466	24726
rejected %	88%	87%	53%	88%	61%	79%

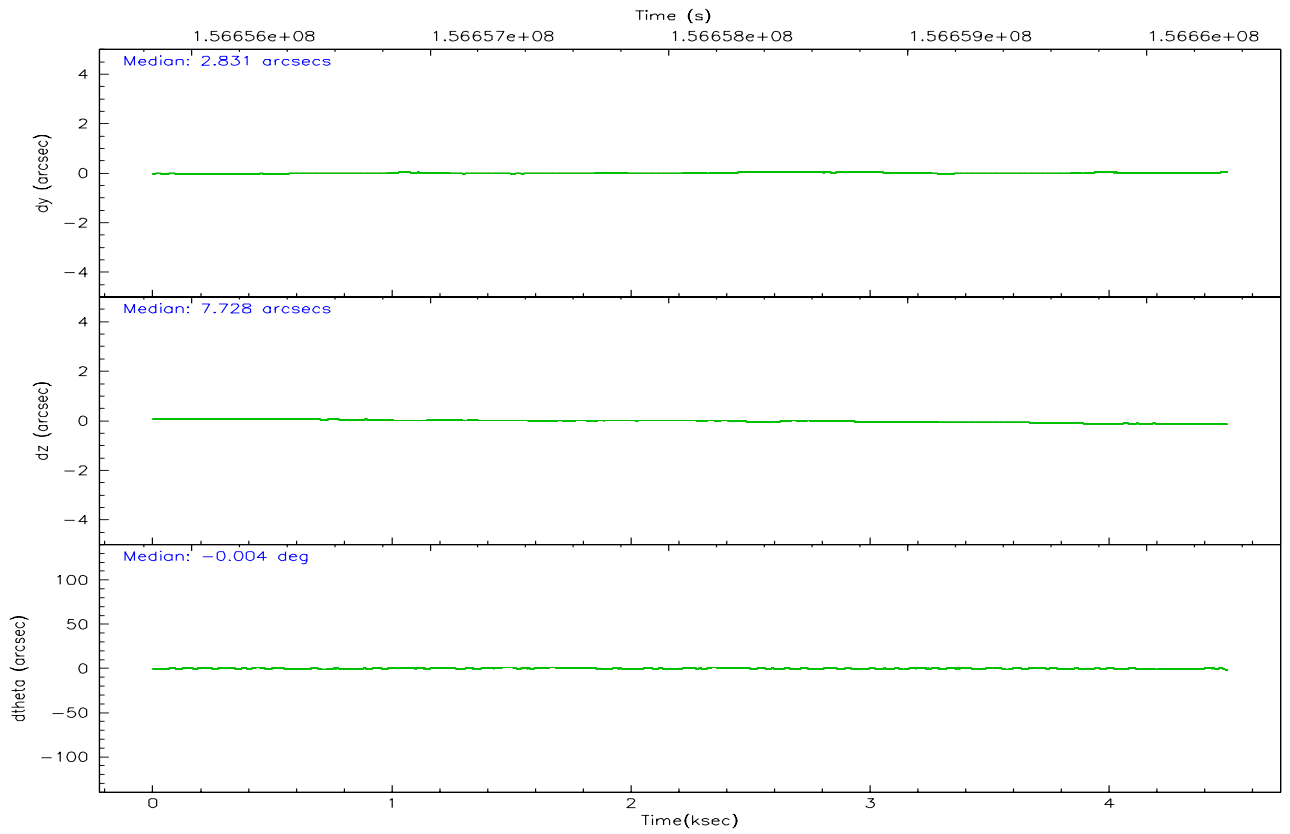
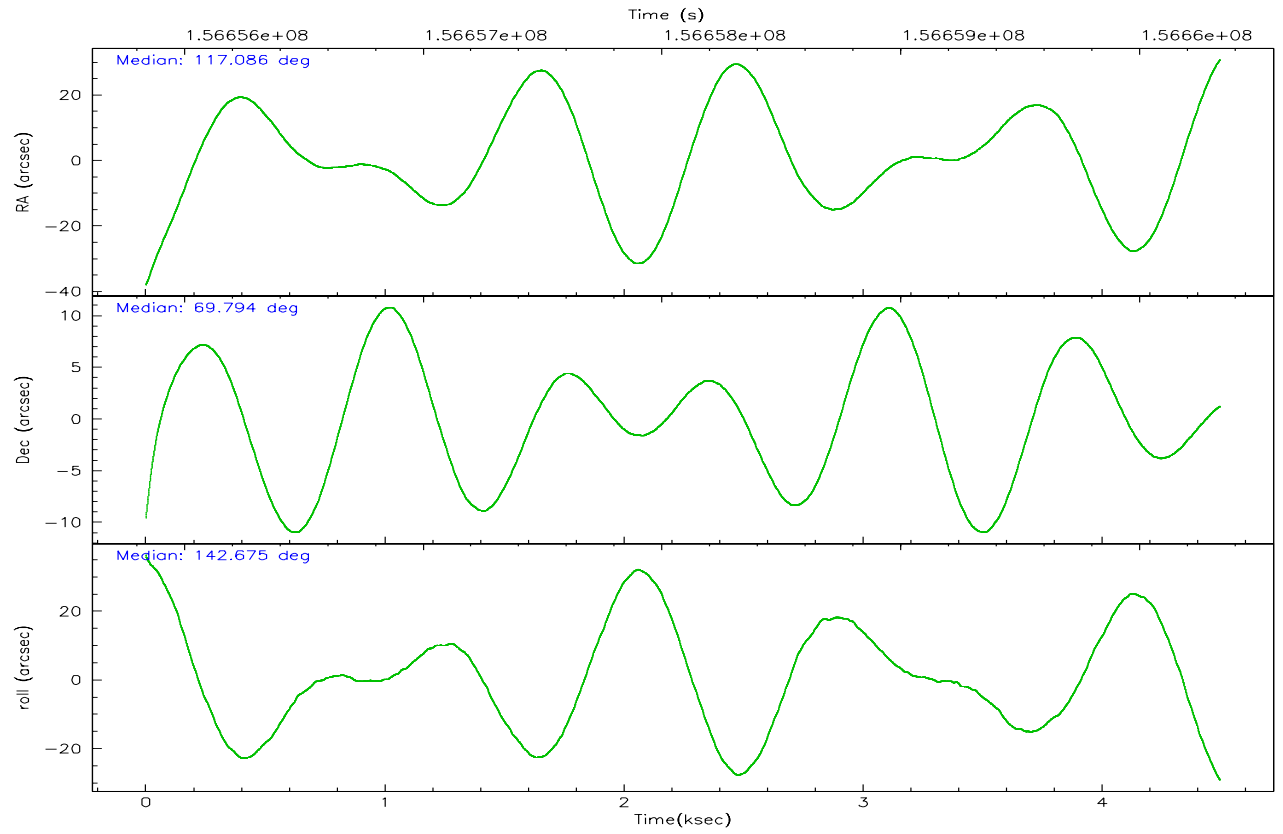
	ccd 2	ccd 3	ccd 5	ccd 6	ccd 7	ccd 8
grade 0 events	1337	1377	3306	1208	842	2054
	5%	5%	8%	4%	2%	6%
grade 1 events	17	15	613	9	20	20
	0%	0%	1%	0%	0%	0%
grade 2 events	587	515	5335	607	3300	1484
	2%	2%	13%	2%	9%	4%
grade 3 events	316	275	364	283	688	642
	1%	1%	0%	1%	2%	2%
grade 4 events	299	281	339	290	661	619
	1%	1%	0%	1%	1%	1%
grade 5 events	981	994	2011	1133	2179	1450
	3%	4%	5%	4%	6%	4%
grade 6 events	442	458	9215	600	7395	1716
	1%	1%	23%	2%	22%	5%
grade 7 events	21322	20255	18705	22113	18252	23243
	84%	83%	46%	84%	54%	74%

2.2 Compared Parameters

Parameter	Planned	Actual	Parameter	Planned	Actual
Instrument	ACIS	ACIS	Obspar format version number	6	6
Detector	ACIS-235678	ACIS-235678	Obspar file type	PREDICTED	ACTUAL
Grating	NONE	NONE	Obspar update status	NONE	UPDATED
Data mode	FAINT	FAINT	Number of optional ACIS chips dropped	0	0
Observation mode	POINTING	POINTING	On-chip summing requested	N	N
Pointing RA	117.164368	117.0858888719095	Subarray requested	NONE	NONE
Pointing Dec	69.790724	69.79382295614562	Alternating exposures requested	N	N
Pointing Roll	142.451869	142.6821461594996	Primary exposure time	0.000000	3.2
SIM focus pos (mm)	-0.684267	-0.6828225247311905			
SIM defocus (mm)	0	0.001444936568705701			
SIM translation stage pos (mm)	-190.132523	-190.1400660498719			
SIM translation stage offset (mm)	0	0.00754346686406393			
Observation start time	156656166.184000	156655122.77086			
Observation start date	2002-12-19T03:35:02	2002-12-19T03:18:42			
Observation end time	156660335.184000	156661070.84611			
Observation end date	2002-12-19T04:44:31	2002-12-19T04:57:50			
Read mode	TIMED	TIMED			

2.3 Aspect



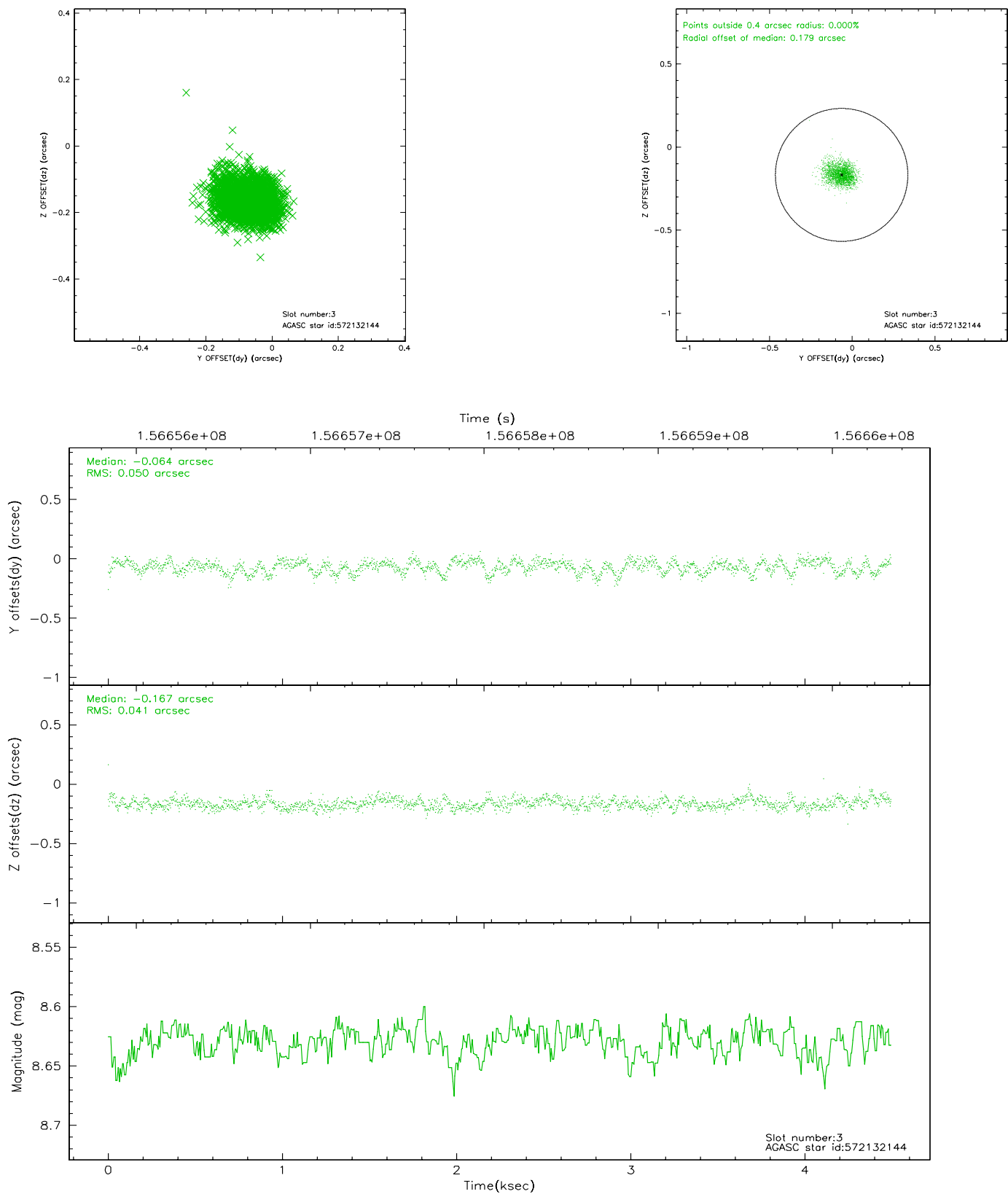


Slot Statistics

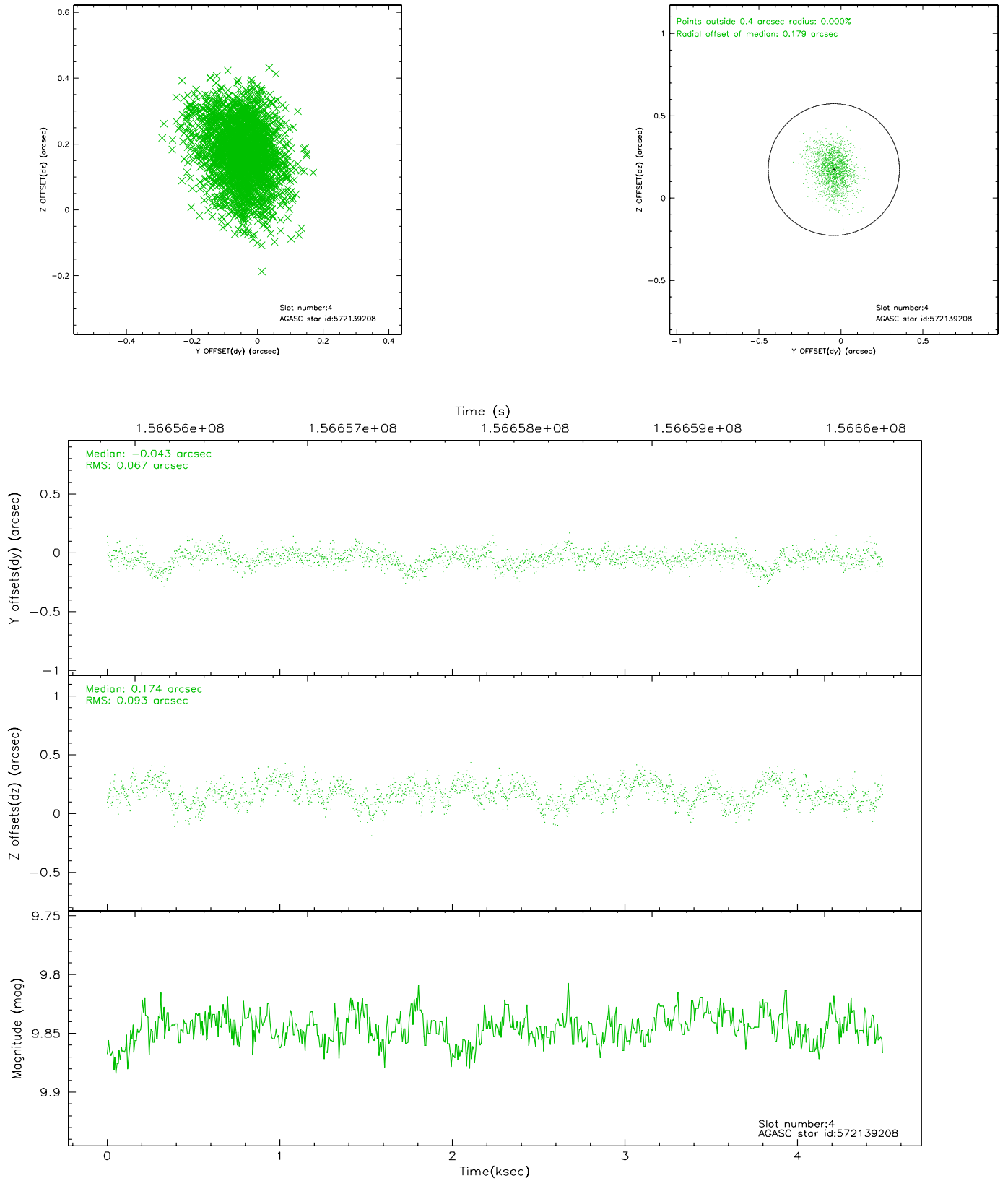
slot	status	id	mag	n_pts	med_dy	med_dz	dr1	dr2	ra	dec	mean_y	mean_z
0	FID	ACIS-S-2	7.11	1096	-0.001	0.014	0.007	0.011	0.000000	0.000000	-755.48	-1728.88
1	FID	ACIS-S-4	7.20	1096	-0.049	-0.003	0.006	0.010	0.000000	0.000000	2157.14	178.15
2	FID	ACIS-S-5	7.24	1097	0.019	-0.002	0.007	0.012	0.000000	0.000000	-1806.53	173.41
3	GUIDE	572132144	8.63	2191	-0.064	-0.167	0.068	0.113	115.031091	69.591791	1714.85	2162.88
4	GUIDE	572139208	9.85	2192	-0.043	0.174	0.121	0.198	118.996381	70.018175	-1265.81	-2047.94
5	GUIDE	571607744	7.45	2193	-0.052	-0.023	0.079	0.122	116.770320	69.154552	-995.15	2121.45
6	GUIDE	571610224	9.28	2193	0.101	-0.093	0.125	0.198	117.649754	68.981524	-2271.12	1926.79
7	GUIDE	572141328	9.77	2186	0.065	0.103	0.099	0.162	117.032059	70.557439	1807.47	-2090.40

2.4 Star Slots

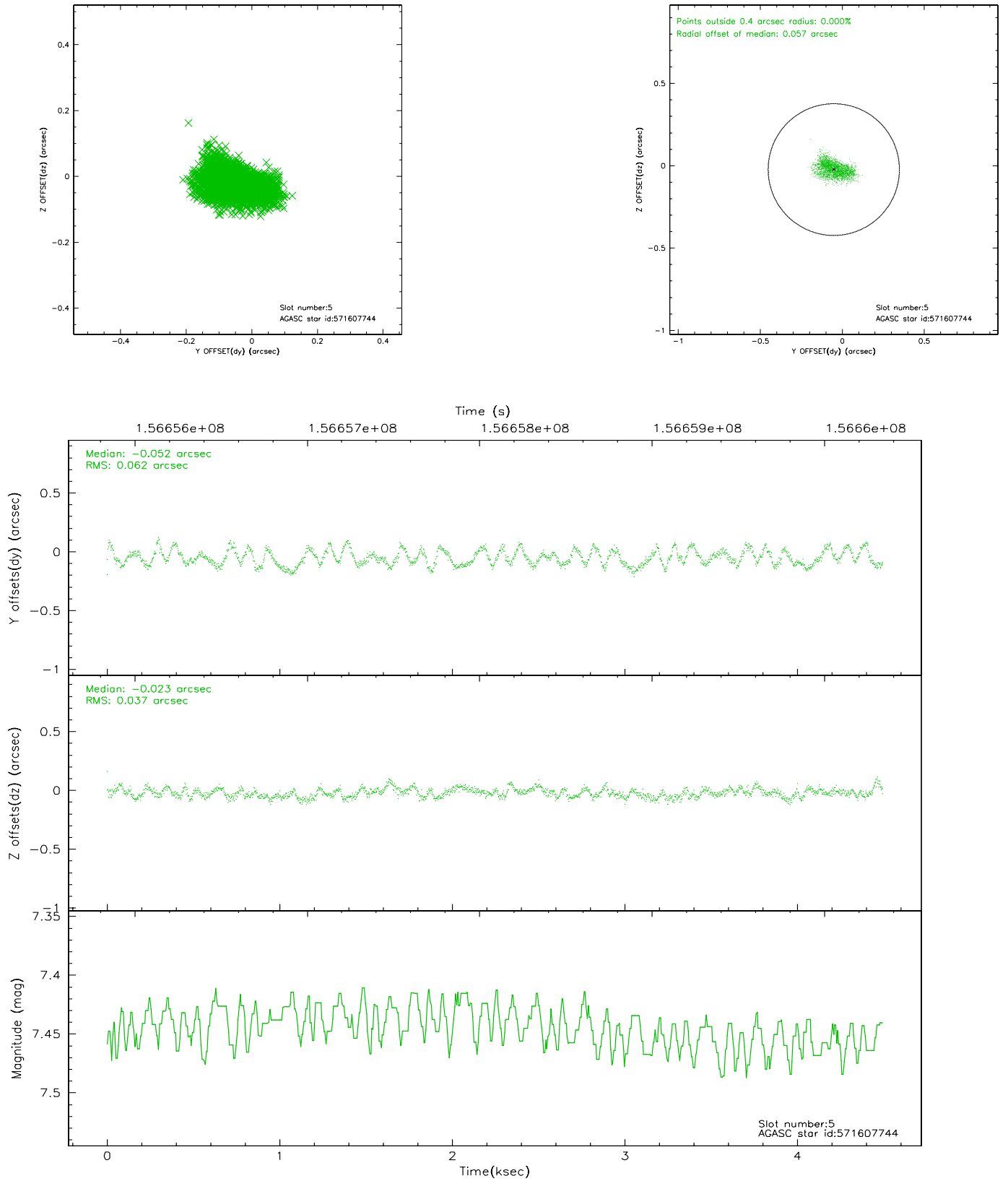
2.4.1 Slot 3



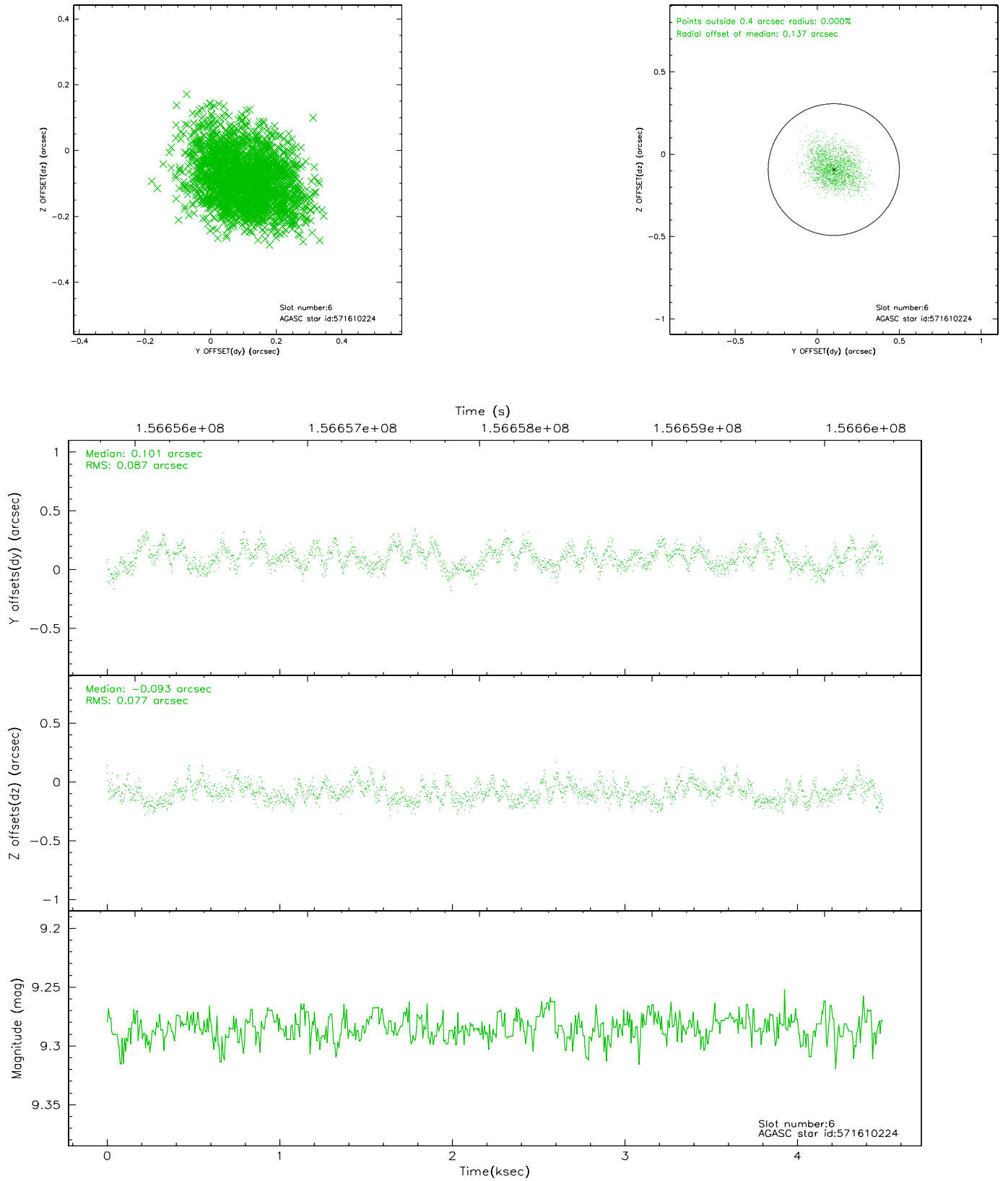
2.4.2 Slot 4



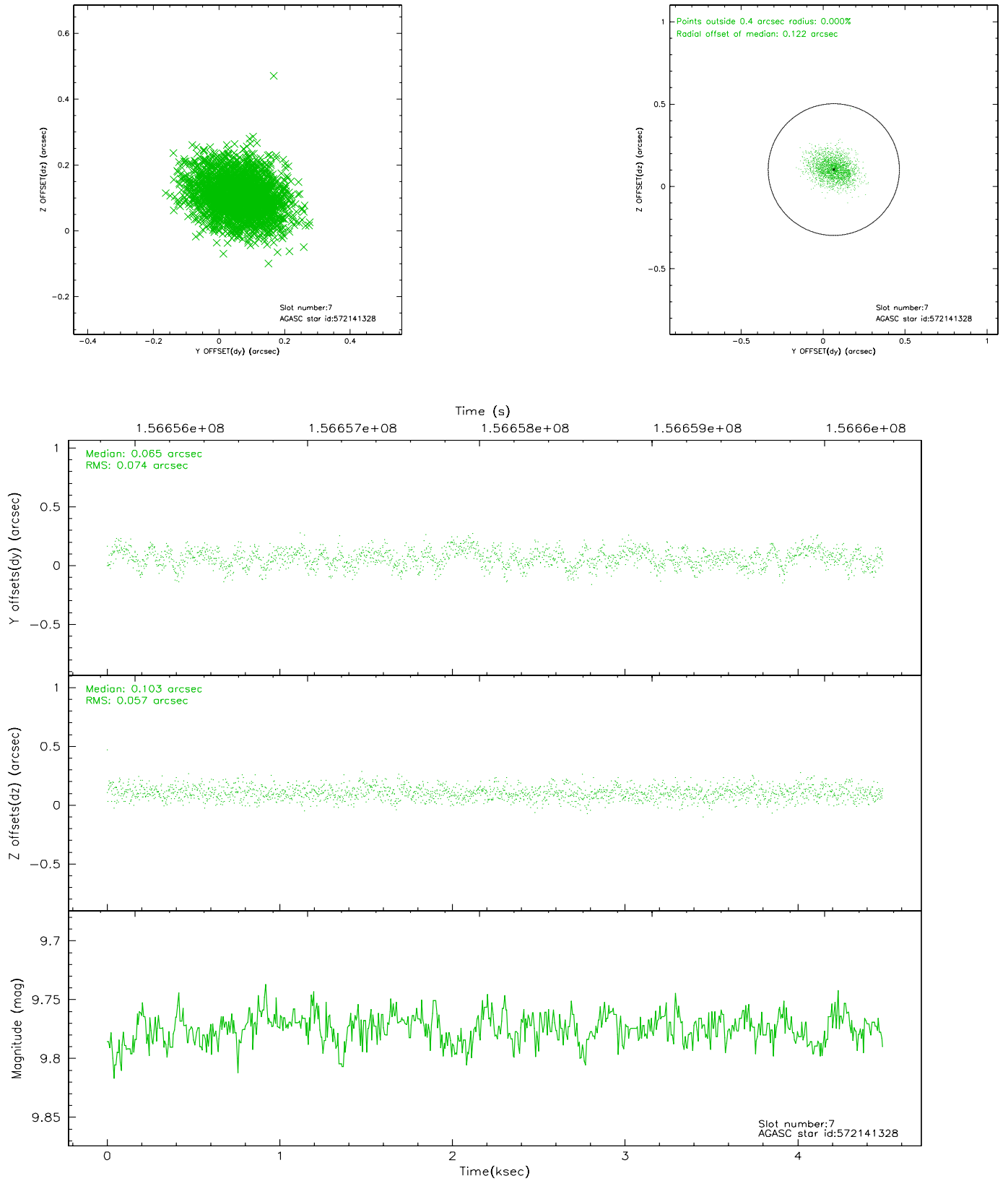
2.4.3 Slot 5



2.4.4 Slot 6

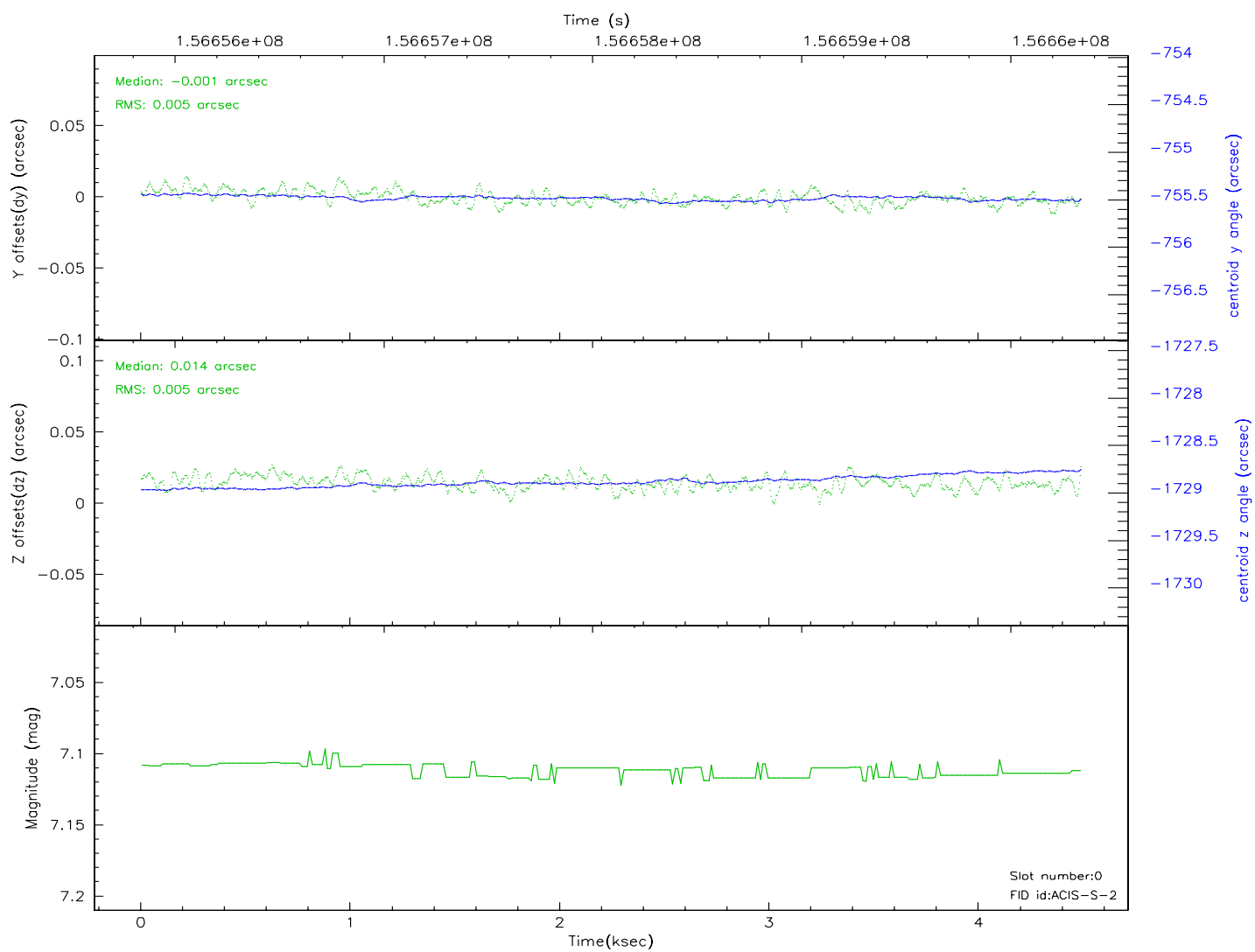
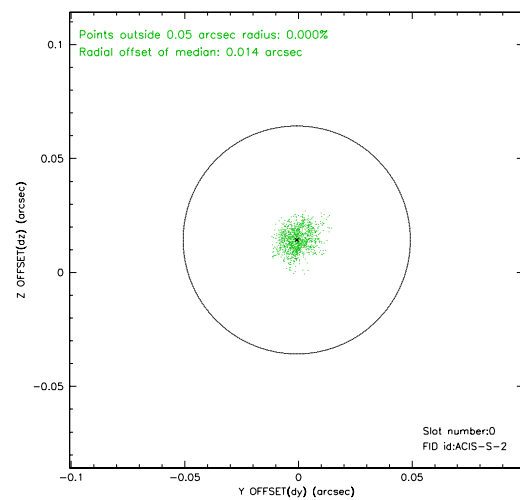
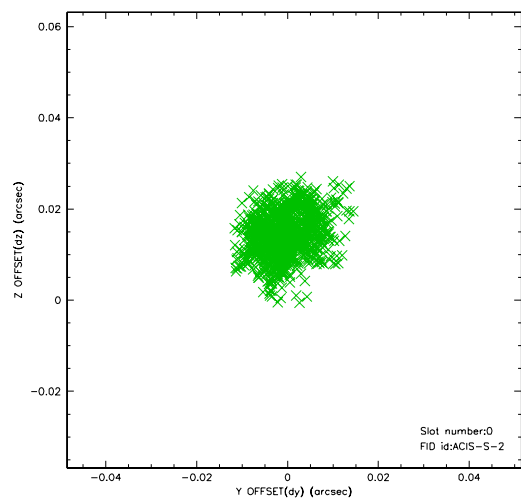


2.4.5 Slot 7

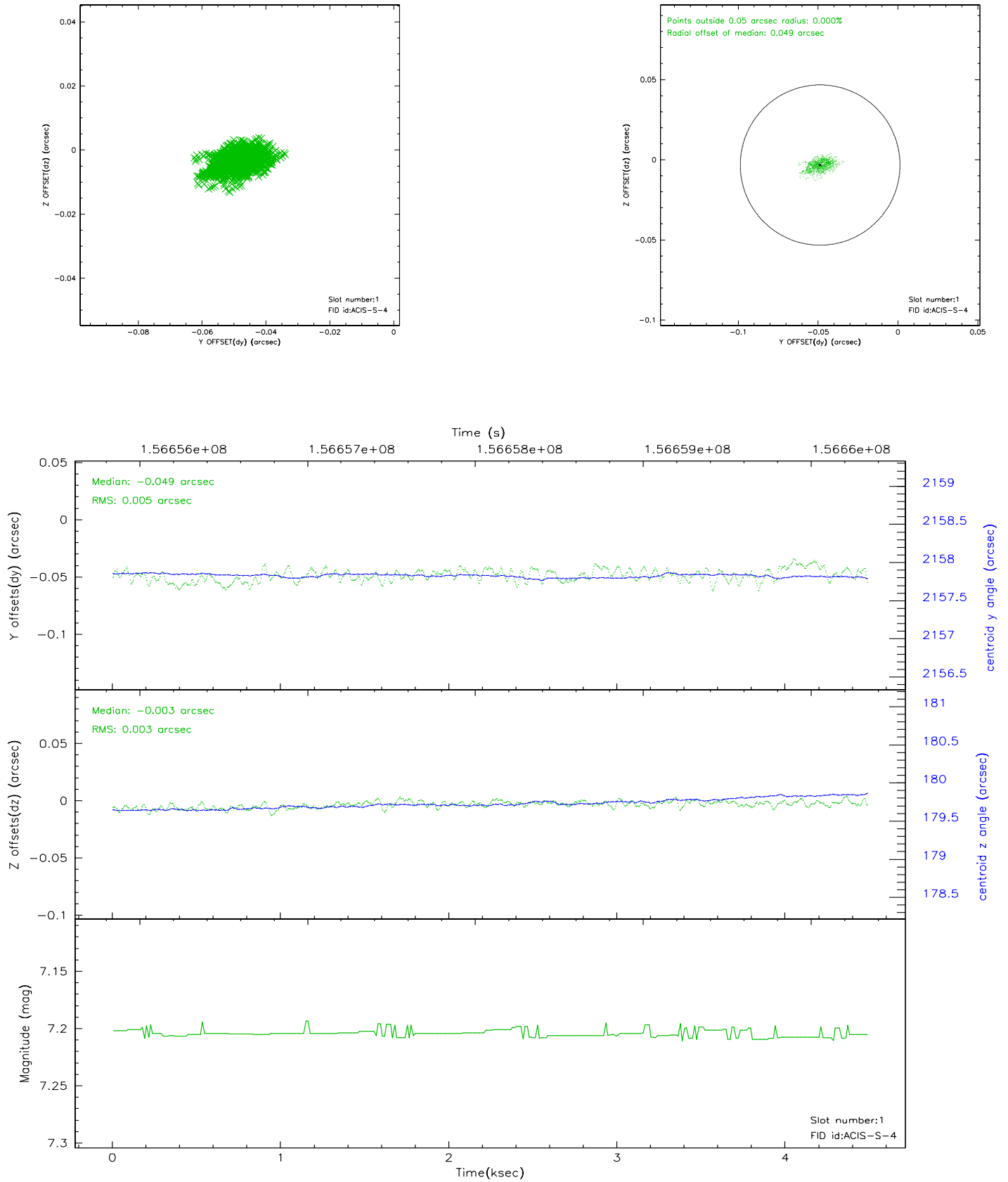


2.5 FID Slots

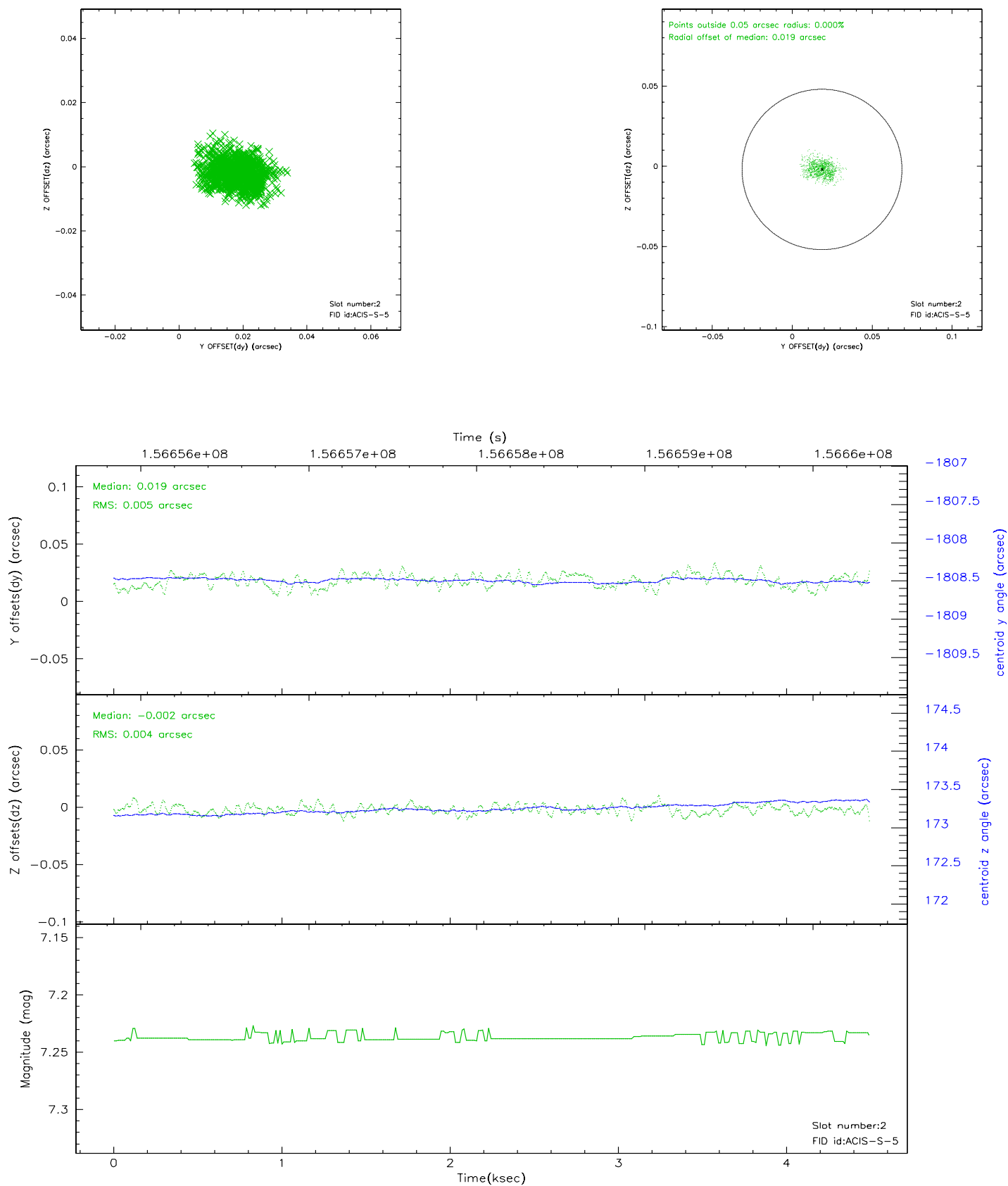
2.5.1 Slot 0



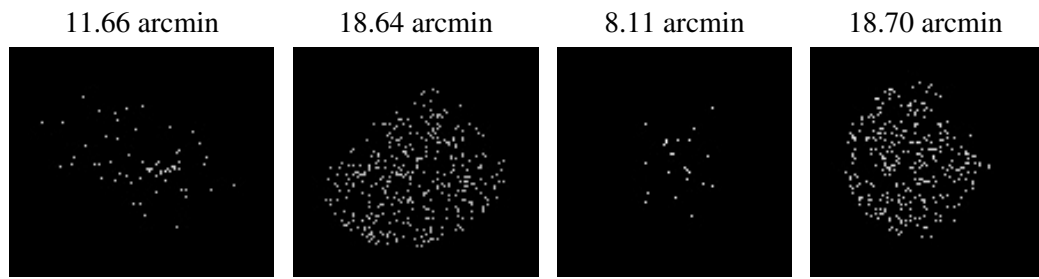
2.5.2 Slot 1



2.5.3 Slot 2



3 Point Sources



A Summary

A.1 Status

V&V Scientist	Beth Sundheim
V&V Date (YYYY-MM-DD)	2006.10.16
V&V Edition	1
V&V Disposition and Status	OK
V&V Charge Time	4.131

A.2 Comments