

V&V Reference Report

L2 ASCDS Version : 7.6.8.1

Observation 4031 - L2 Version 001
Chandra X-Ray Center

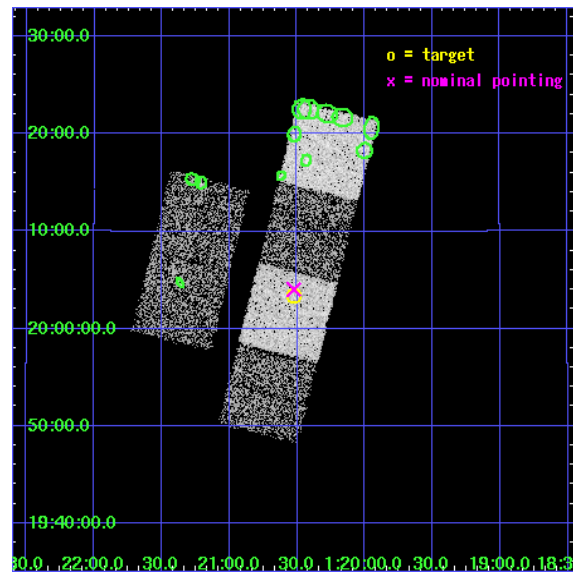
L2 Processing Date : Aug 15 2006

Contents

1	Front	2
2	OBI	3
2.1	OBI	3
2.1.1	Images	3
2.1.2	Bias	3
2.1.3	Parameters	4
2.1.4	Events	4
2.2	Compared Parameters	5
2.3	Aspect	6
2.4	Star Slots	9
2.4.1	Slot 3	9
2.4.2	Slot 4	10
2.4.3	Slot 5	11
2.4.4	Slot 6	12
2.4.5	Slot 7	13
2.5	FID Slots	14
2.5.1	Slot 0	14
2.5.2	Slot 1	15
2.5.3	Slot 2	16
3	Point Sources	17
A	Summary	18
A.1	Status	18
A.2	Comments	18

1 Front

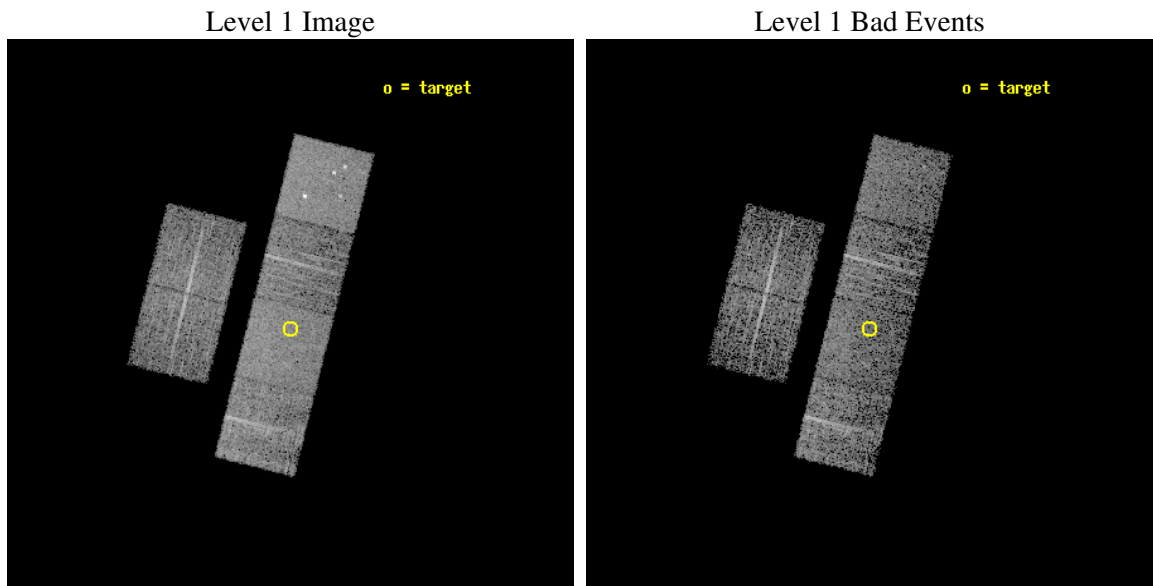
seq_num	700710
obs_id	4031
title	WHY DO WE SEE BROAD LINES IN X-RAY ABSORBED AGN?
observer	Dr. BELINDA WILKES
object	2MASS012031+2003
dtcycle	0
cycle	P
ra_targ	20.131667
dec_targ	20.05775
ra_nom	20.130884526954
dec_nom	20.067393239679
roll_nom	104.08081996082
revision	2
ontime	4552.9864069521
livetime	4495.333751588
ontime2	4552.9453669488
ontime3	4553.109526962
ontime5	4553.027476877
ontime6	4553.0684869587
ontime7	4552.9864069521
ontime8	4553.1505669355
l2events	41399



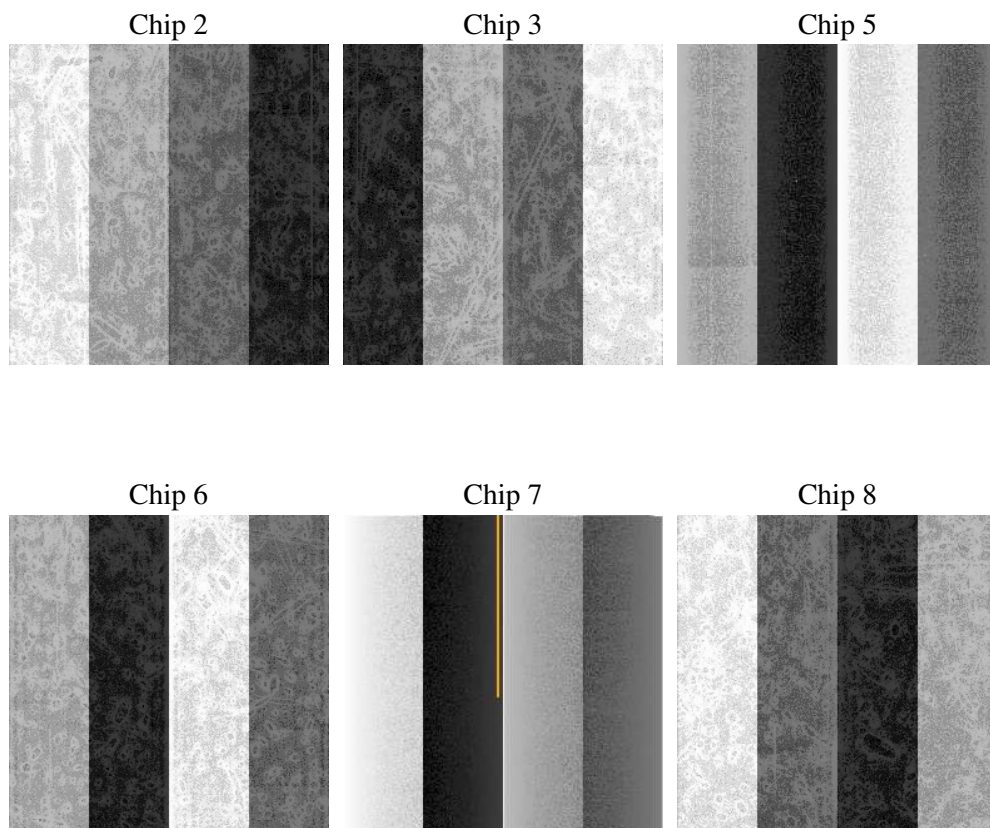
2 OBI

2.1 OBI

2.1.1 Images



2.1.2 Bias



2.1.3 Parameters

obi_num	0
ascdsver	7.6.8.1
caldsver	3.2.3
date	2006-08-15T15:08:18
revision	2

sched_exp_time	4600.000000
ontime	4556.8446834683
ontime2	4553.603643477
ontime3	4556.8446834683
ontime5	4553.6036733985
ontime6	4556.8446834683
ontime7	4556.8446834683
ontime8	4553.603643477
l1events	193595

2.1.4 Events

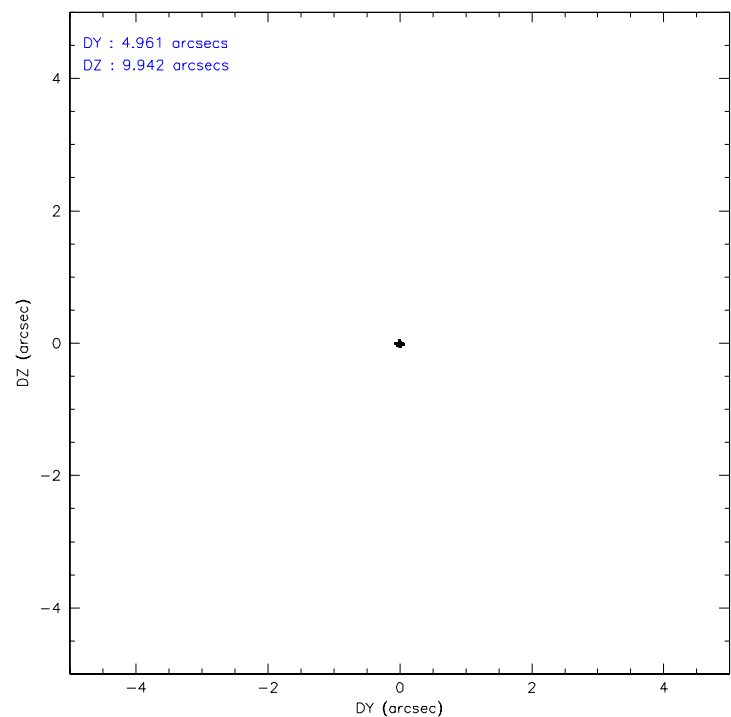
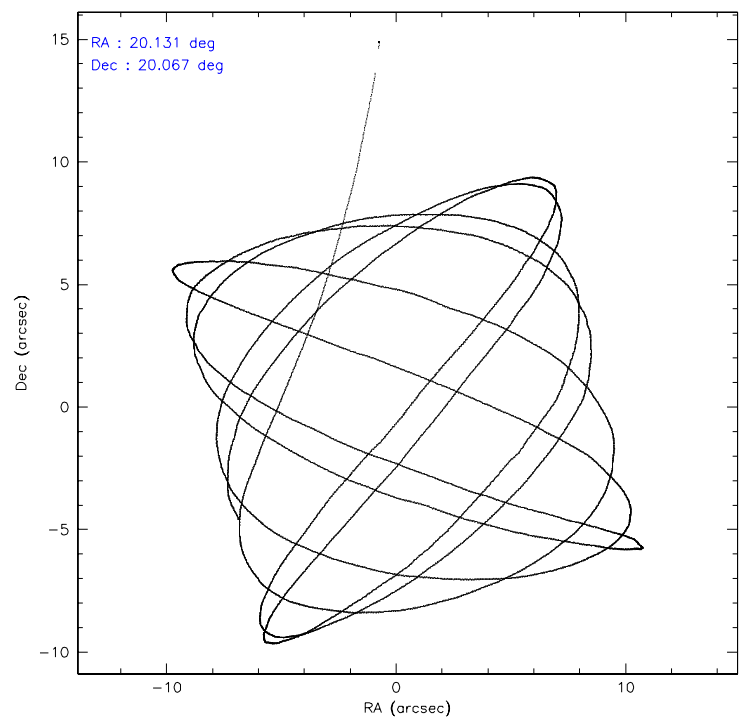
	ccd 2	ccd 3	ccd 5	ccd 6	ccd 7	ccd 8
level 1 events	27236	25368	41445	28025	36748	34773
rejected events	23821	22218	22552	24799	23035	27405
rejected %	87%	87%	54%	88%	62%	78%

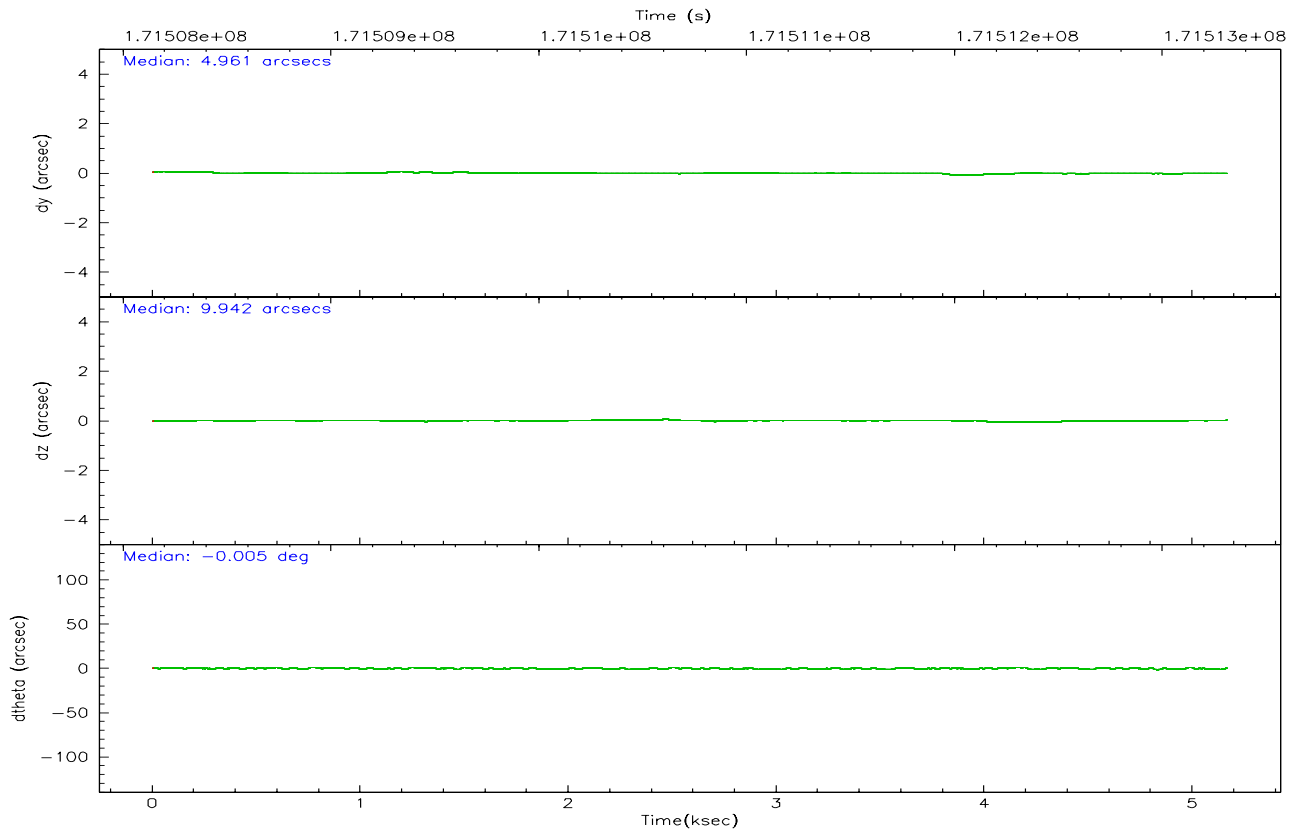
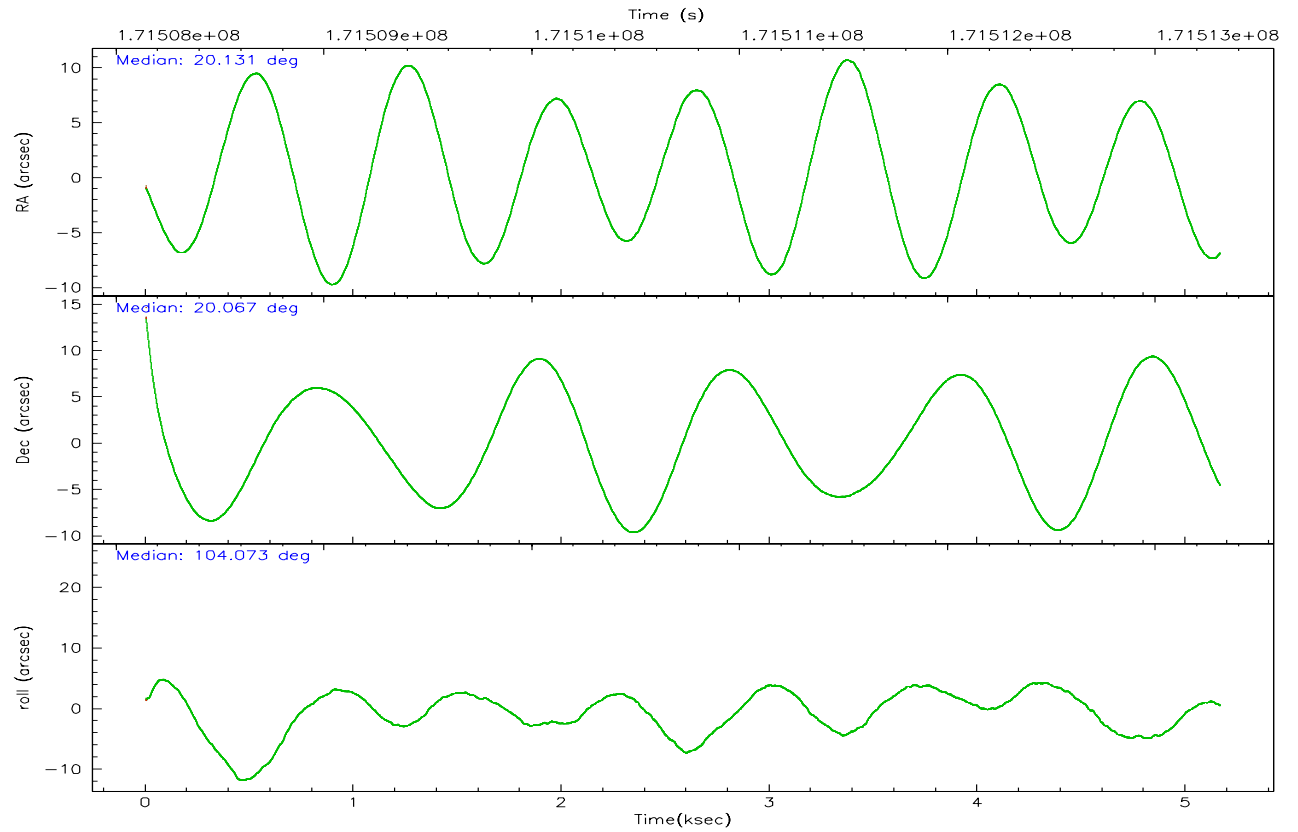
	ccd 2	ccd 3	ccd 5	ccd 6	ccd 7	ccd 8
grade 0 events	1507	1419	2679	1277	779	2382
	5%	5%	6%	4%	2%	6%
grade 1 events	9	15	40	18	22	16
	0%	0%	0%	0%	0%	0%
grade 2 events	702	611	5551	683	3374	1699
	2%	2%	13%	2%	9%	4%
grade 3 events	354	307	385	310	647	724
	1%	1%	0%	1%	1%	2%
grade 4 events	311	297	378	297	641	713
	1%	1%	0%	1%	1%	2%
grade 5 events	1128	1203	1973	1291	2412	1595
	4%	4%	4%	4%	6%	4%
grade 6 events	541	519	9900	663	8283	1850
	1%	2%	23%	2%	22%	5%
grade 7 events	22684	20997	20539	23486	20590	25794
	83%	82%	49%	83%	56%	74%

2.2 Compared Parameters

Parameter	Planned	Actual	Parameter	Planned	Actual
Instrument	ACIS	ACIS	Obspar format version number	6	6
Detector	ACIS-235678	ACIS-235678	Obspar file type	PREDICTED	ACTUAL
Grating	NONE	NONE	Obspar update status	NONE	UPDATED
Data mode	FAINT	FAINT	On-chip summing requested	N	N
Observation mode	POINTING	POINTING	Subarray requested	NONE	NONE
Pointing RA	20.151401	20.13088452695381	Alternating exposures requested	N	N
Pointing Dec	20.048095	20.06739323967919	Primary exposure time	0.000000	3.2
Pointing Roll	103.917164	104.0808199608212			
SIM focus pos (mm)	-0.684267	-0.6828225247311905			
SIM defocus (mm)	0	0.001444936568705701			
SIM translation stage pos (mm)	-190.132523	-190.1425803651734			
SIM translation stage offset (mm)	0	0.01005778216563158			
Observation start time	171508726.184000	171507572.75874			
Observation start date	2003-06-09T01:17:42	2003-06-09T00:59:32			
Observation end time	171513326.184000	171514370.55903			
Observation end date	2003-06-09T02:34:22	2003-06-09T02:52:50			
Read mode	TIMED	TIMED			

2.3 Aspect



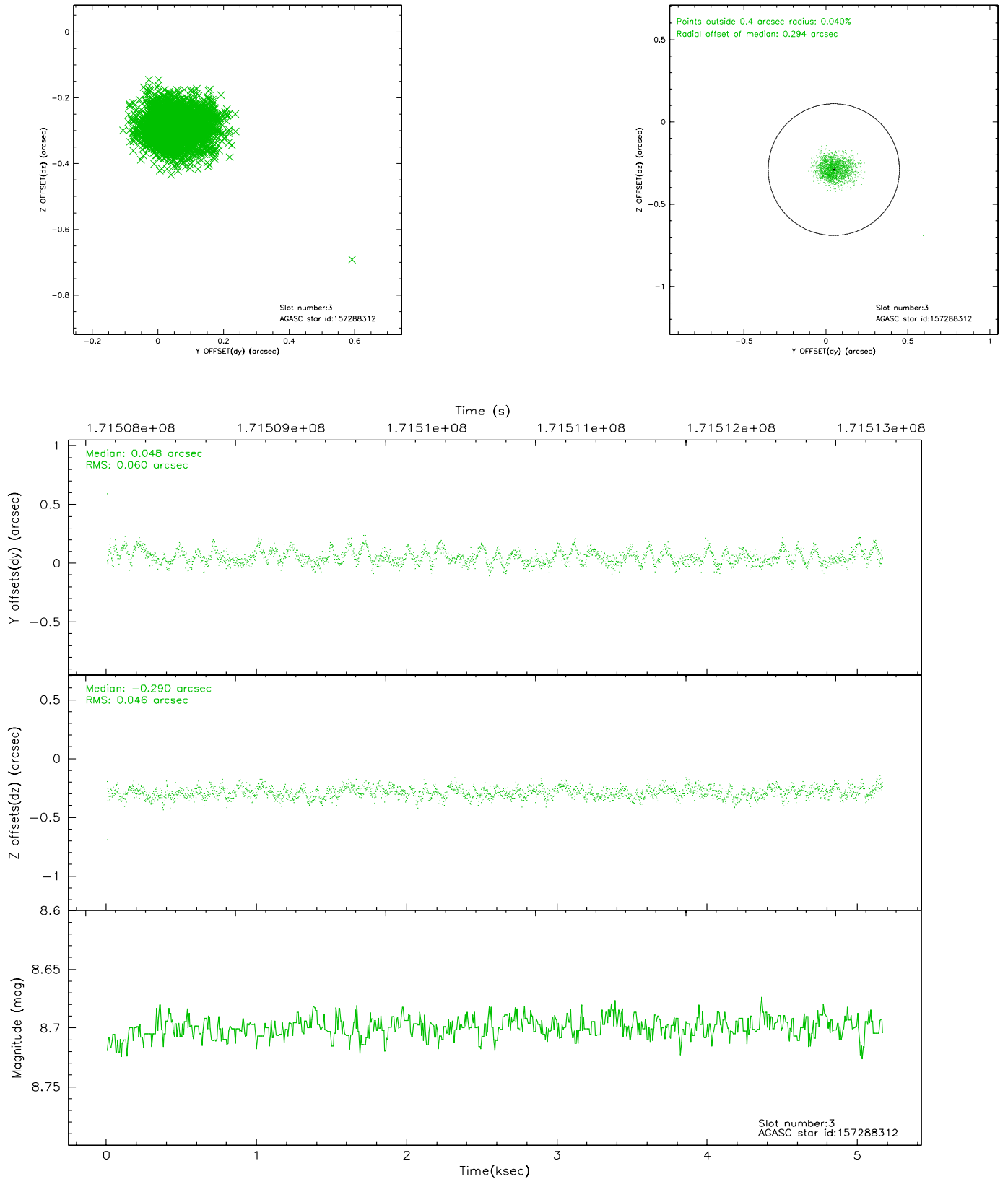


Slot Statistics

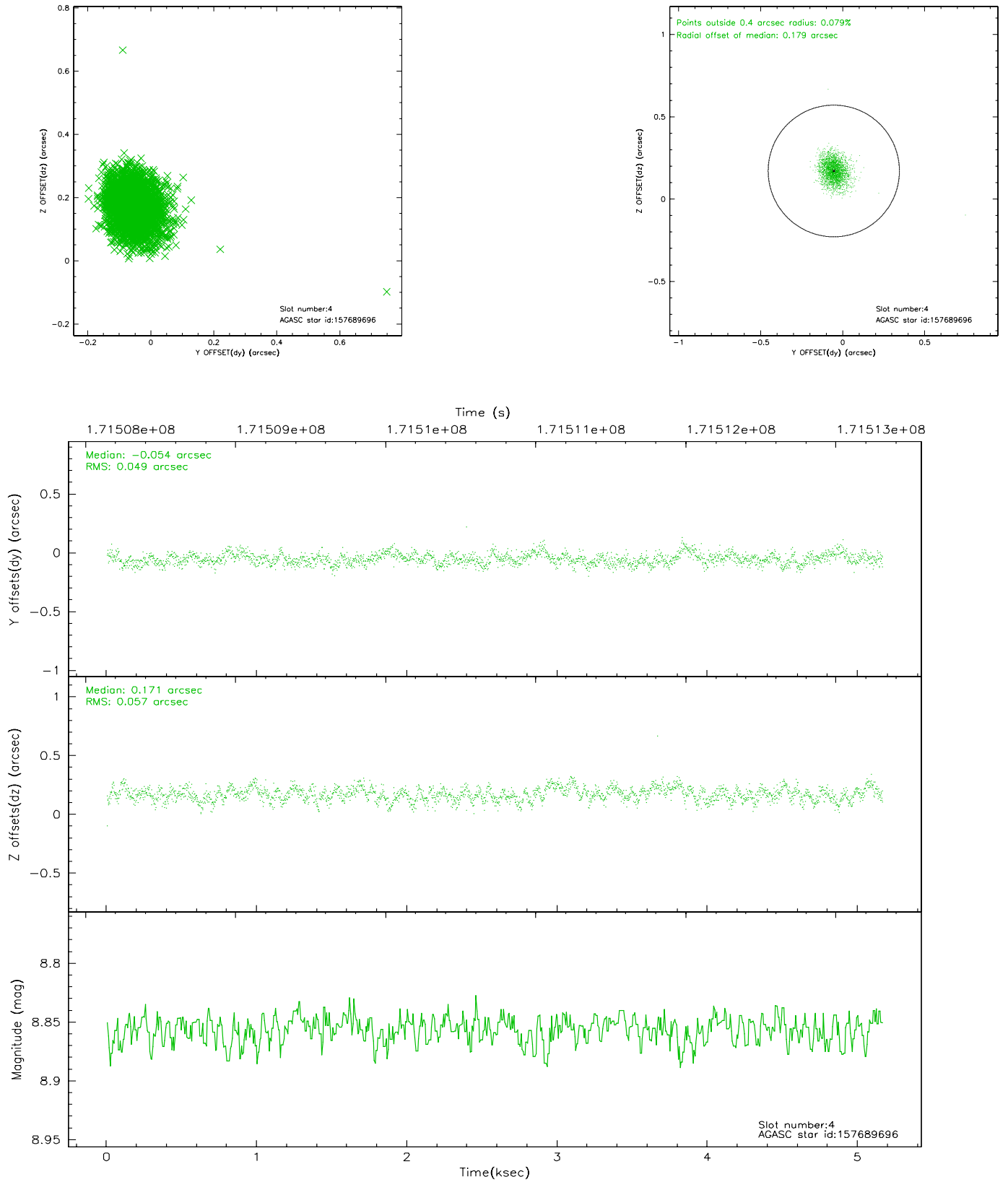
slot	status	id	mag	n_pts	med_dy	med_dz	dr1	dr2	ra	dec	mean_y	mean_z
0	FID	ACIS-S-2	7.11	1260	-0.046	0.003	0.007	0.011	0.000000	0.000000	-757.68	-1731.14
1	FID	ACIS-S-4	7.20	1260	0.036	0.022	0.005	0.009	0.000000	0.000000	2155.12	176.19
2	FID	ACIS-S-5	7.23	1260	-0.021	-0.016	0.006	0.011	0.000000	0.000000	-1809.01	171.10
3	GUIDE	157288312	8.70	2519	0.048	-0.290	0.079	0.129	19.706255	19.288860	-2287.50	2124.67
4	GUIDE	157689696	8.86	2519	-0.054	0.171	0.077	0.127	20.676088	20.258732	312.00	-1901.90
5	GUIDE	157691632	9.45	2516	-0.115	0.126	0.086	0.138	20.564337	20.358448	751.28	-1622.49
6	GUIDE	157692544	9.05	2519	-0.143	-0.158	0.070	0.113	19.789453	20.423886	1608.33	859.10
7	GUIDE	157289008	9.72	2517	0.255	0.150	0.094	0.153	20.384615	19.447259	-2288.37	-248.18

2.4 Star Slots

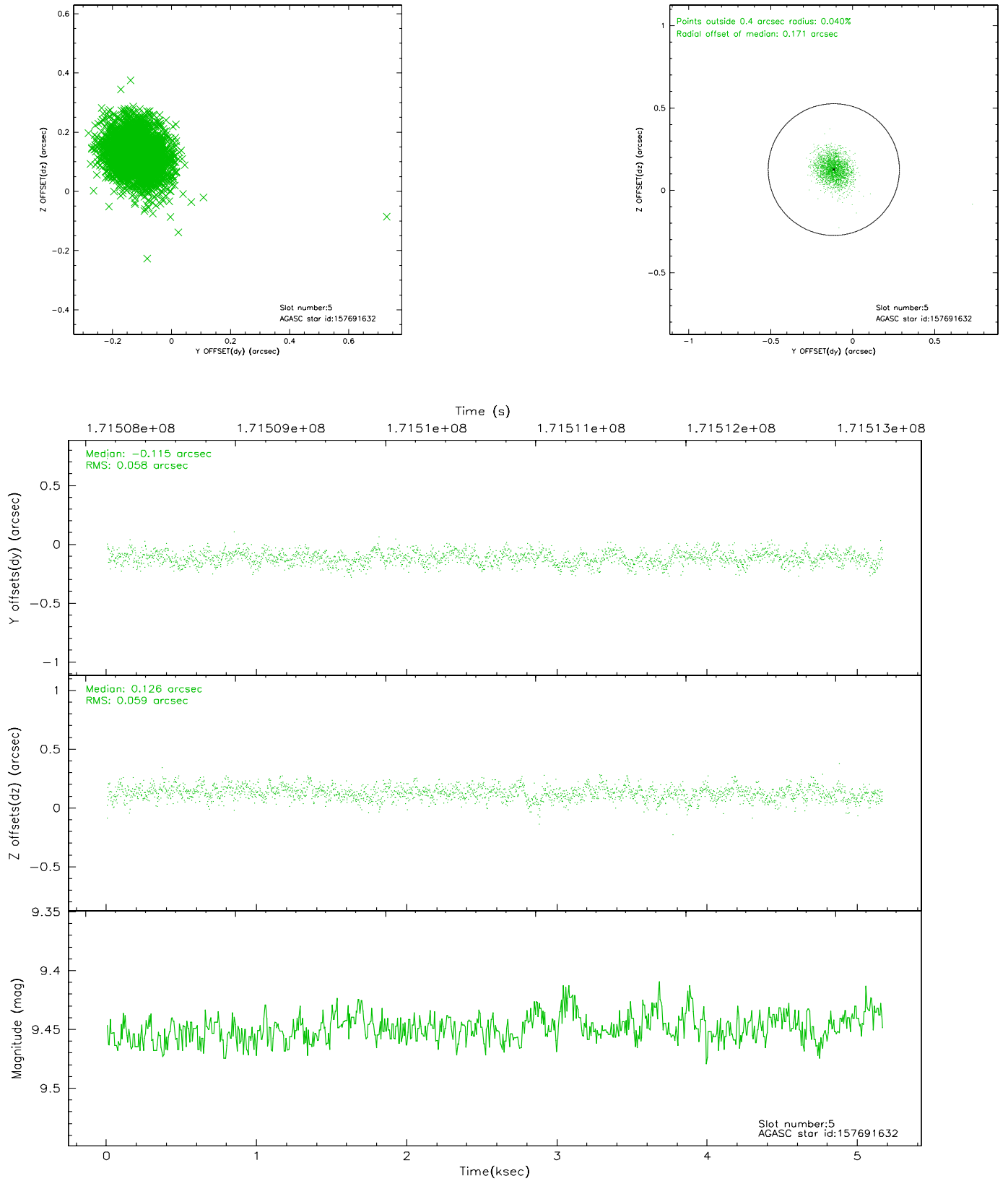
2.4.1 Slot 3



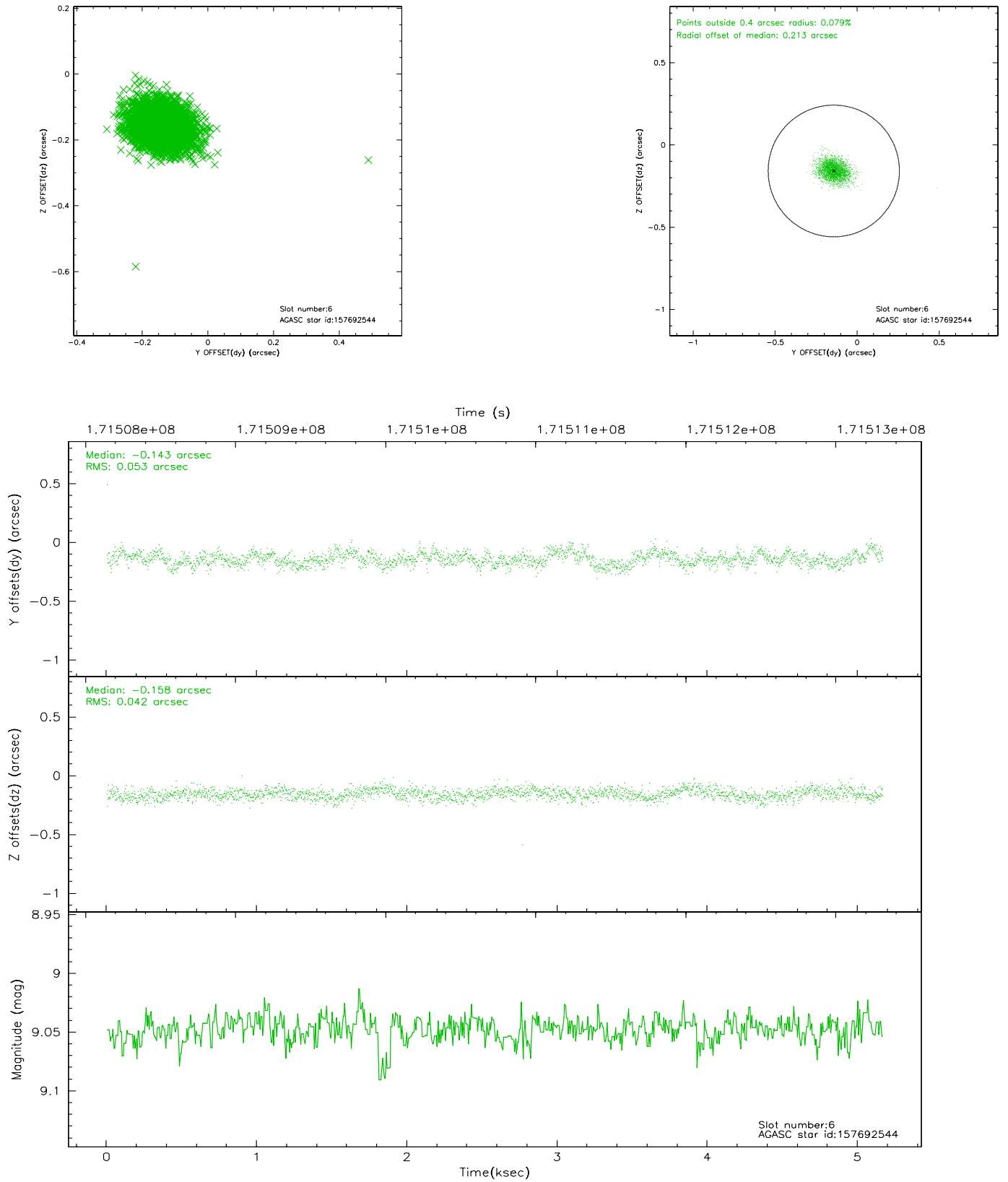
2.4.2 Slot 4



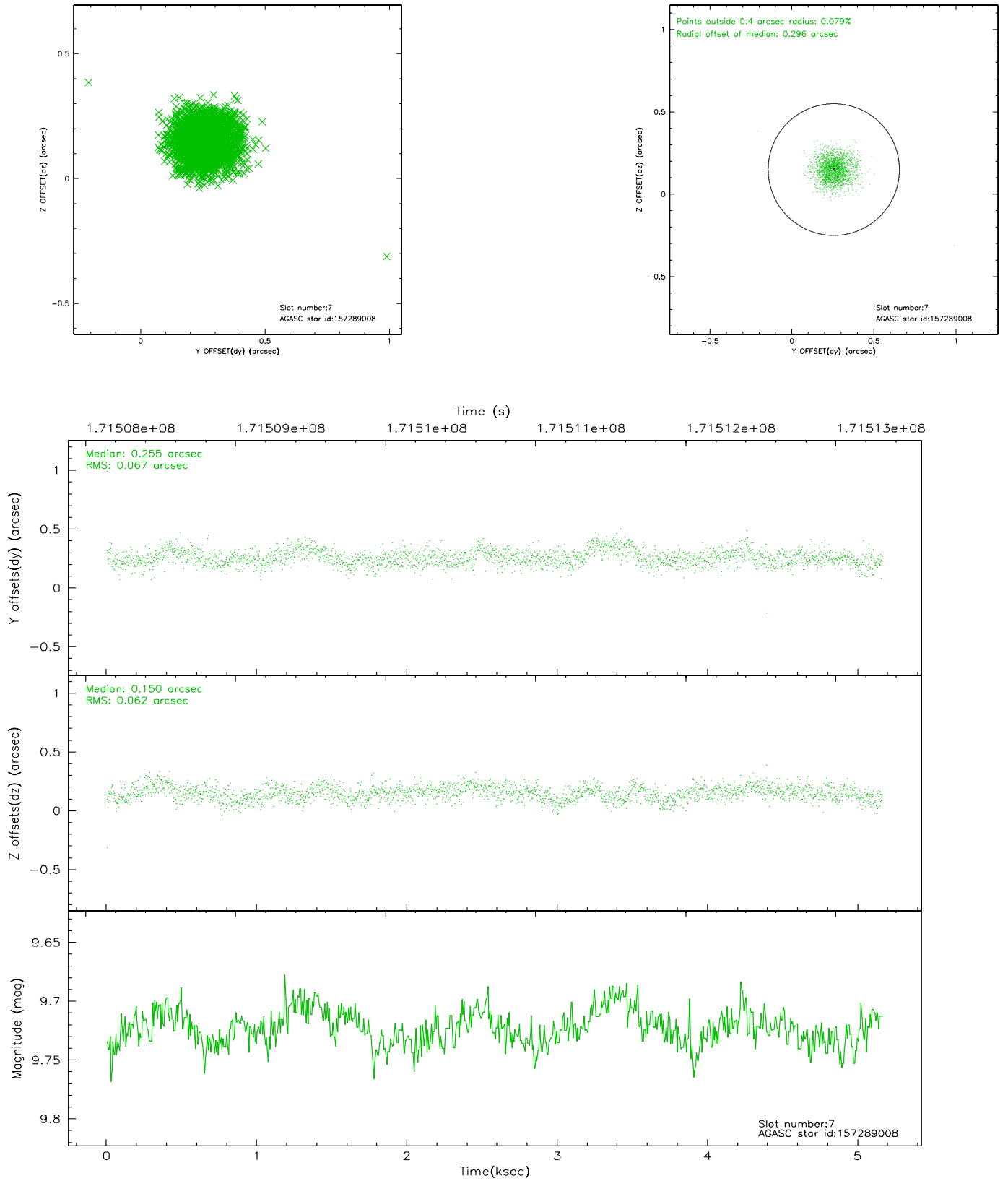
2.4.3 Slot 5



2.4.4 Slot 6

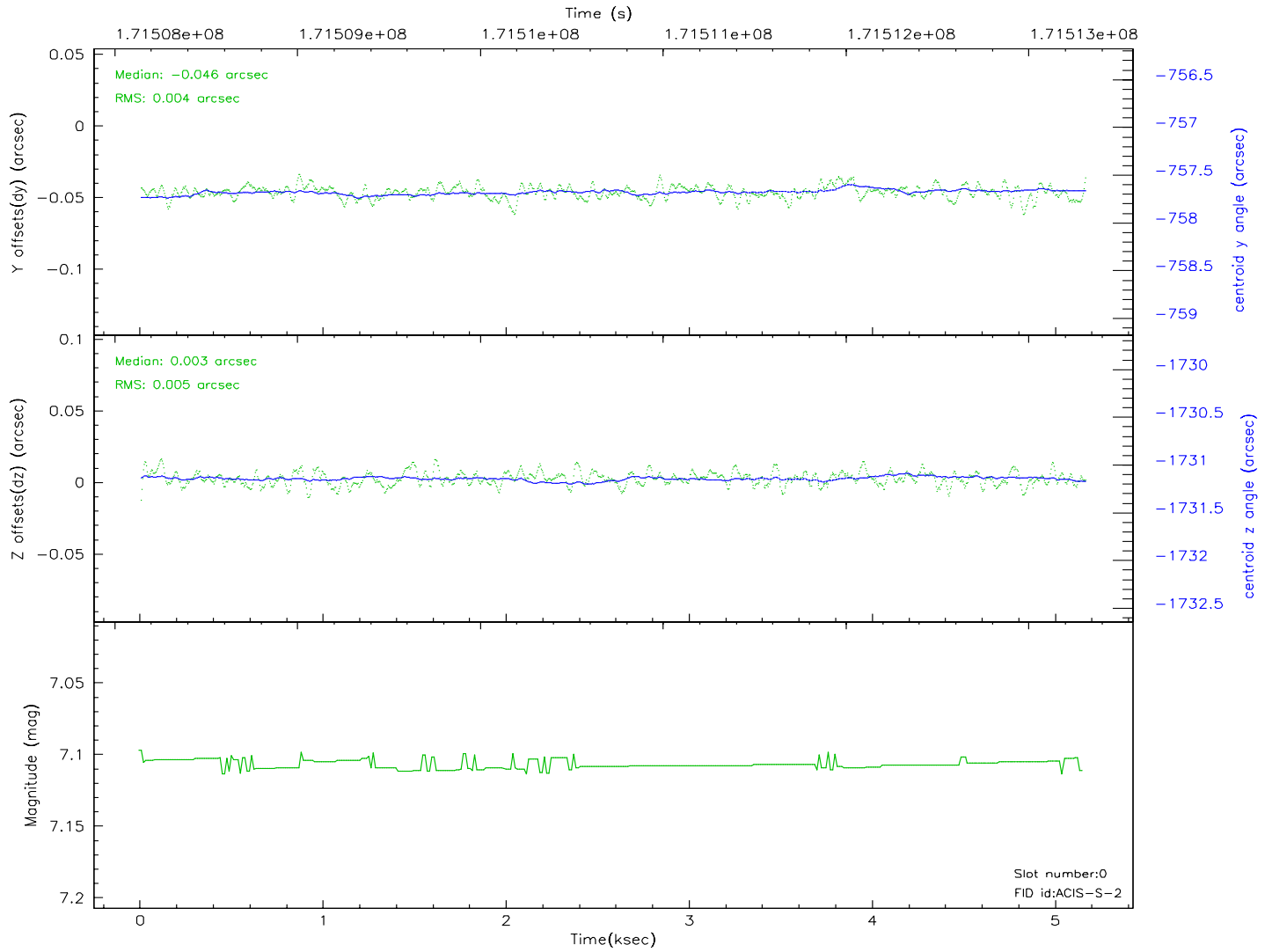
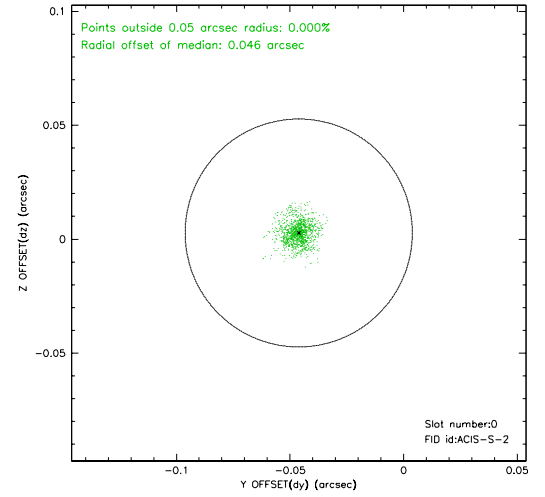
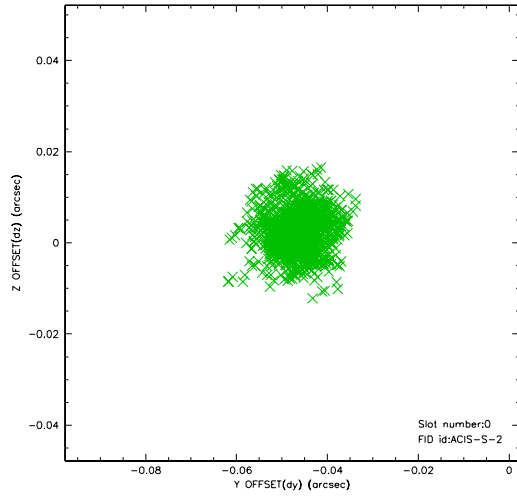


2.4.5 Slot 7

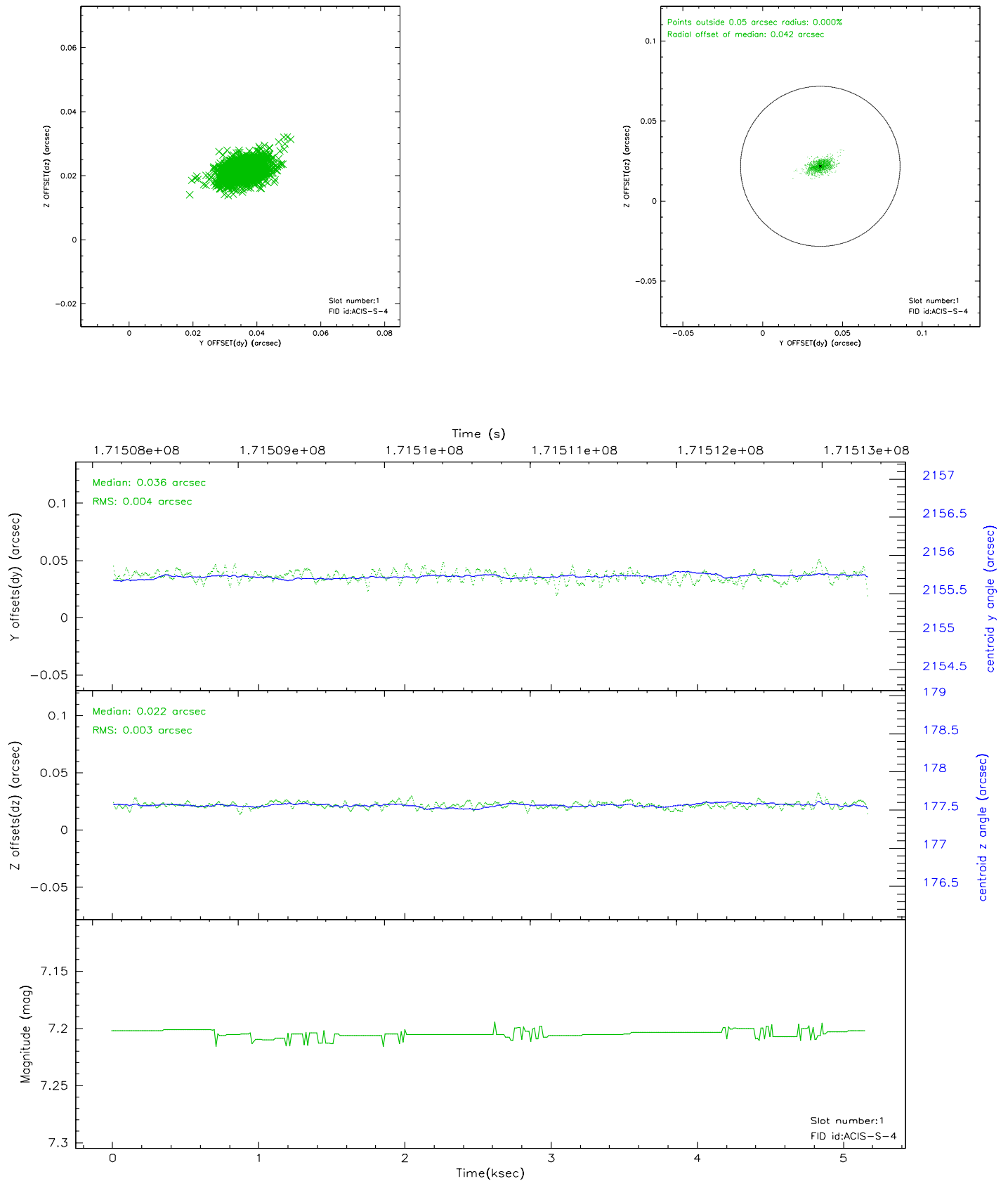


2.5 FID Slots

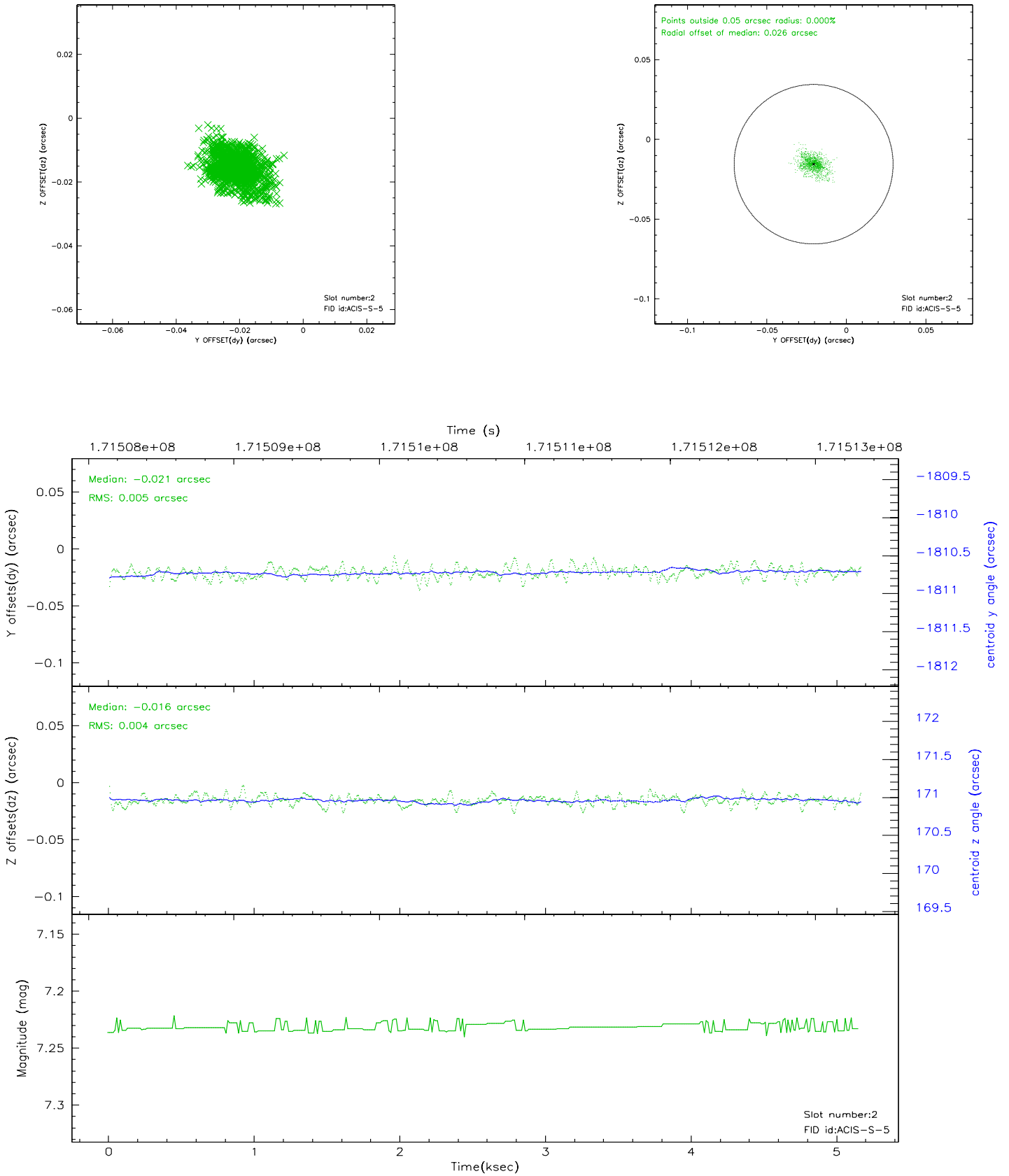
2.5.1 Slot 0



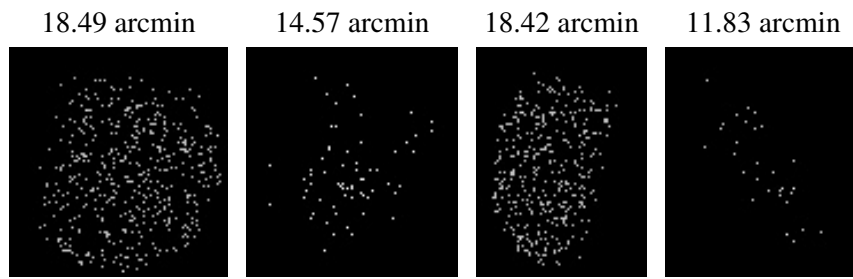
2.5.2 Slot 1



2.5.3 Slot 2



3 Point Sources



A Summary

A.1 Status

V&V Scientist	Beth Sundheim
V&V Date (YYYY-MM-DD)	2006.08.16
V&V Edition	1
V&V Disposition and Status	OK
V&V Charge Time	4.55

A.2 Comments