

V&V Reference Report

L2 ASCDS Version : 8.4.5

Observation 4023 - L2 Version 3
Chandra X-Ray Center

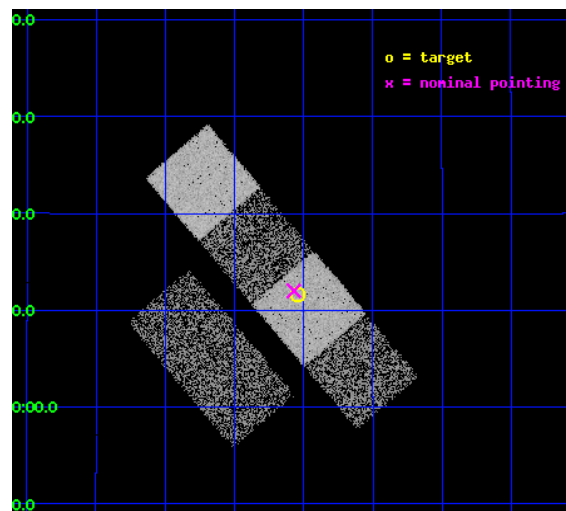
L2 Processing Date : Oct 19 2012

Contents

1	Front	2
2	OBI	3
2.1	OBI	3
2.1.1	Images	3
2.1.2	Bias	3
2.1.3	Parameters	4
2.1.4	Events	4
2.2	Compared Parameters	5
2.3	Aspect	6
2.4	Star Slots	9
2.4.1	Slot 3	9
2.4.2	Slot 4	10
2.4.3	Slot 5	11
2.4.4	Slot 6	12
2.4.5	Slot 7	13
2.5	FID Slots	14
2.5.1	Slot 0	14
2.5.2	Slot 1	15
2.5.3	Slot 2	16
A	Summary	17
A.1	Status	17
A.2	Comments	17

1 Front

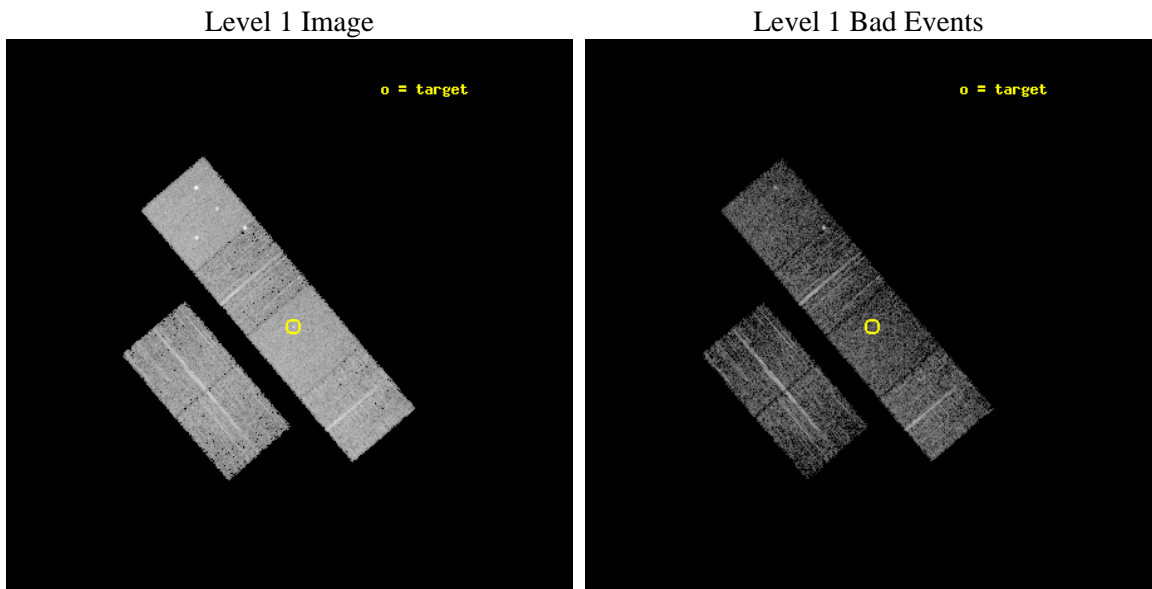
seq_num	700702	Sequence number
obs_id	4023	Observation id
title	A CHANDRA SURVEY OF INFRARED-BRIGHT LINER GALAXIES	Proposal title
observer	Dr. Shobita Satyapal	Principal investigator
object	NGC5953	Source name
dtcycle	0	
cycle	P	events from which exps? Prim/Second/Both
ra_targ	233.635	Observer's specified target RA [deg]
dec_targ	15.194167	Observer's specified target Dec [deg]
ra_nom	233.64268664614	Nominal RA [deg]
dec_nom	15.200348484916	Nominal Dec [deg]
roll_nom	49.589834294766	Nominal Roll [deg]
revision	3	Processing version of data
ontime	4754.1136322618	Sum of GTIs [s]
livetime	4693.9141828665	Livetime [s]
ontime2	4754.1546722651	Sum of GTIs [s]
ontime3	4753.9905122519	Sum of GTIs [s]
ontime5	4754.0725922585	Sum of GTIs [s]
ontime6	4754.0315522552	Sum of GTIs [s]
ontime7	4754.1136322618	Sum of GTIs [s]
ontime8	4750.7085319161	Sum of GTIs [s]
l2events	49728	Number of level 2 events



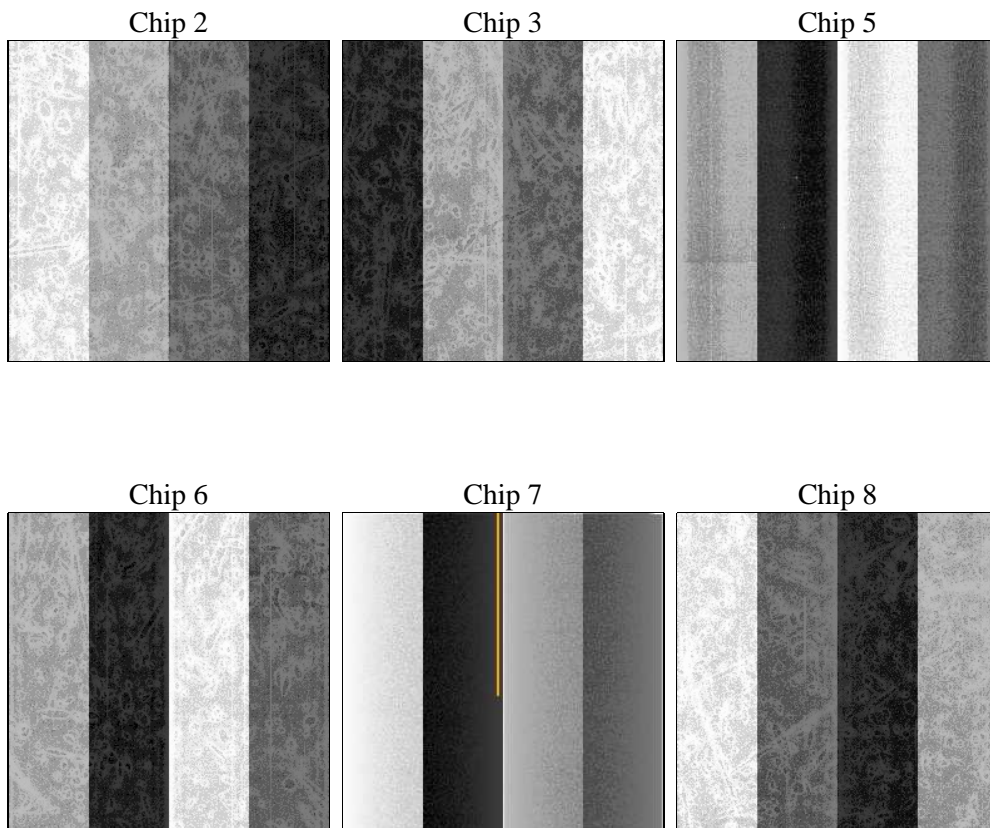
2 OBI

2.1 OBI

2.1.1 Images



2.1.2 Bias



2.1.3 Parameters

obi_num	1	Obi number	sched_exp_time	5000.000000	[s] Scheduled observation exposure time
ascdsver	8.4.5	Processing system revision	ontime	4754.1136322618	Sum of GTIs [s]
caldbver	4.5.2	 	ontime2	4754.1546722651	Sum of GTIs [s]
date	2012-10-19T14:19:21	Date and time of file creation	ontime3	4753.9905122519	Sum of GTIs [s]
revision	3	Processing version of data	ontime5	4754.0725922585	Sum of GTIs [s]
			ontime6	4754.0315522552	Sum of GTIs [s]
			ontime7	4754.1136322618	Sum of GTIs [s]
			ontime8	4750.7085319161	Sum of GTIs [s]
			l1events	219698	Number of level 1 events

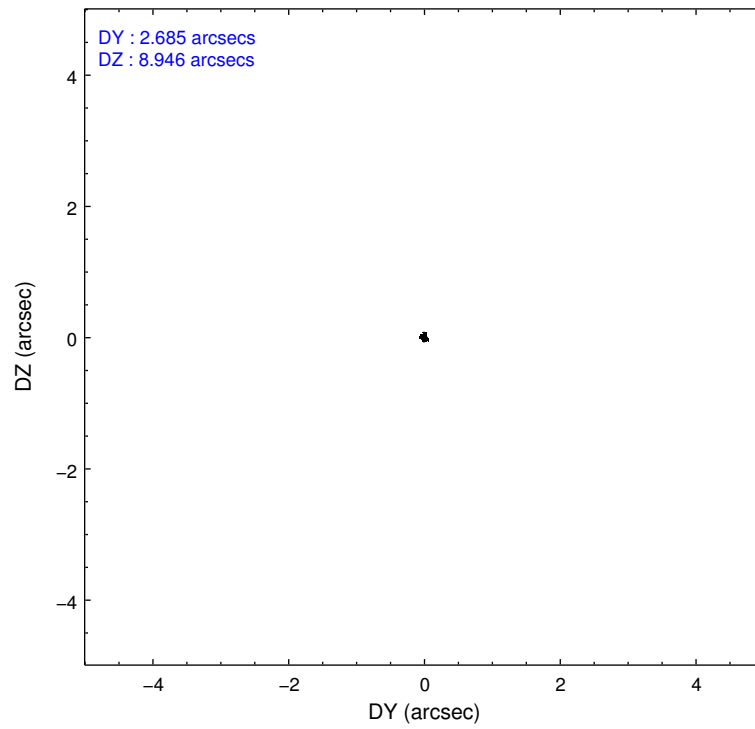
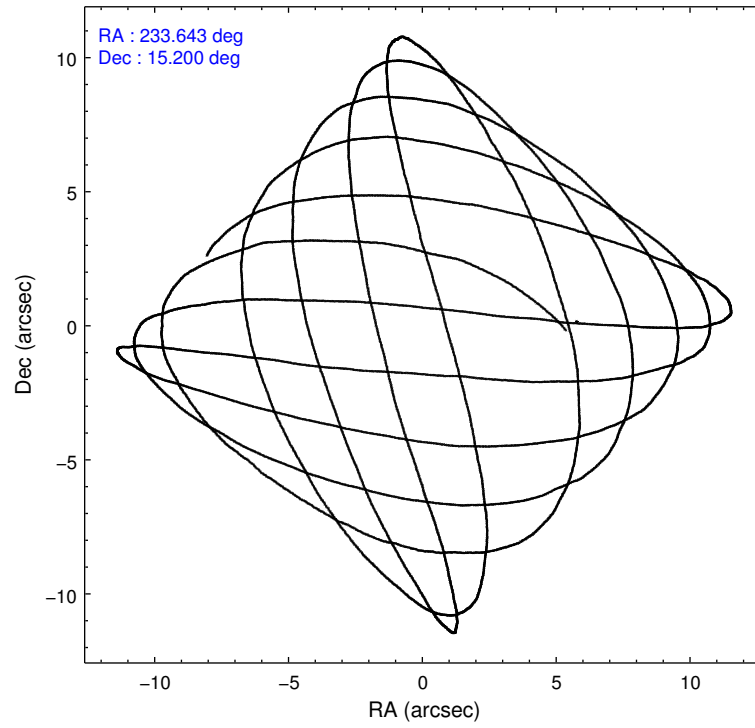
2.1.4 Events

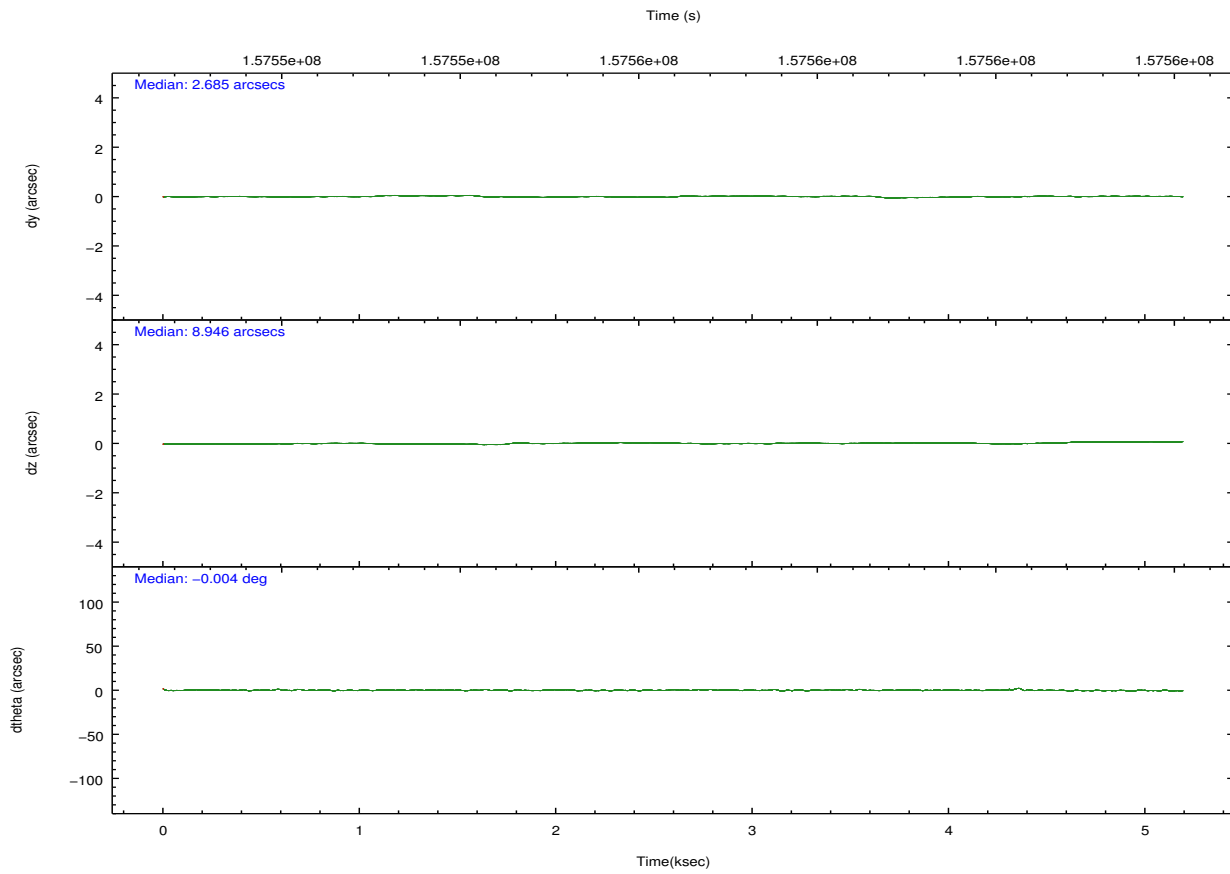
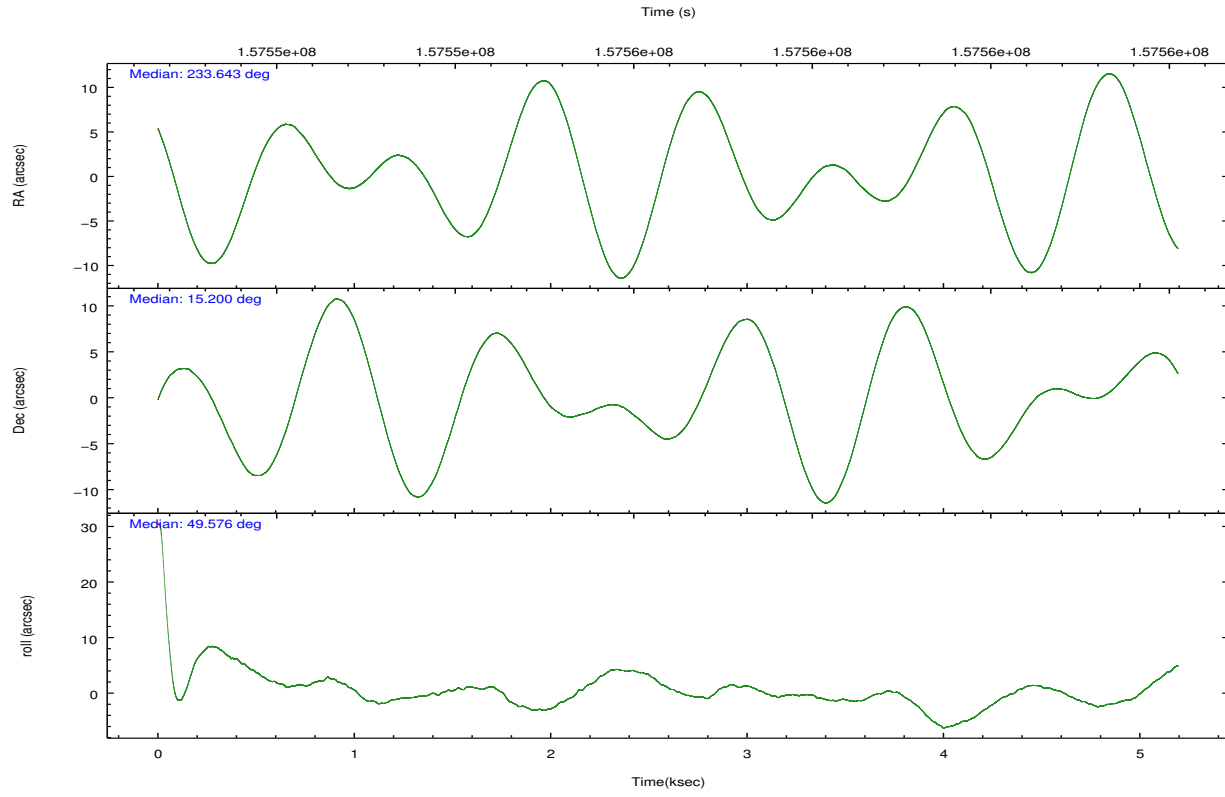
	ccd 2	ccd 3	ccd 5	ccd 6	ccd 7	ccd 8		ccd 2	ccd 3	ccd 5	ccd 6	ccd 7	ccd 8
level 1 events	30803	29440	46212	30222	40837	42184	grade 0 events	1551	1476	3509	1545	1897	2588
rejected events	27246	26064	23797	26604	23022	34100		5%	5%	7%	5%	4%	6%
rejected %	88%	88%	51%	88%	56%	80%	grade 1 events	11	12	335	14	47	26
								0%	0%	0%	0%	0%	0%
							grade 2 events	711	616	6315	684	3550	1751
								2%	2%	13%	2%	8%	4%
							grade 3 events	342	366	980	360	1636	876
								1%	1%	2%	1%	4%	2%
							grade 4 events	353	325	979	347	1634	781
								1%	1%	2%	1%	4%	1%
							grade 5 events	1179	1305	3347	1332	3795	1744
								3%	4%	7%	4%	9%	4%
							grade 6 events	601	599	10649	687	9112	2094
								1%	2%	23%	2%	22%	4%
							grade 7 events	26055	24741	20098	25253	19166	32324
								84%	84%	43%	83%	46%	76%

2.2 Compared Parameters

Parameter	Planned	Actual	Parameter	Planned	Actual
Instrument	ACIS	ACIS	Obspar format version number	7	7
Detector	ACIS-235678	ACIS-235678	Obspar file type	PREDICTED	ACTUAL
Grating	NONE	NONE	Obspar update status	NONE	UPDATED
Data mode	FAINT	FAINT	Number of optional ACIS chips dropped	0	0
Observation mode	POINTING	POINTING	On-chip summing requested	N	N
[deg] Pointing RA	233.638008	233.6426866461446	Subarray requested	NONE	NONE
[deg] Pointing Dec	15.173470	15.20034848491571	Alternating exposures requested	N	N
[deg] Pointing Roll	49.434362	49.58983429476565	[s] Primary exposure time	0.000000	3.2
[mm] SIM focus pos	-0.684267	-0.6828225247311905			
[mm] SIM defocus	0	0.001444936568705701			
[mm] SIM translation stage pos	-190.132523	-190.1425803651734			
[mm] SIM translation stage offset	0	0.01005778216563158			
[s] Observation start time (MET)	157552787.184000	157552224.33333			
Observation start date	2002-12-29T12:38:43	2002-12-29T12:30:24			
[s] Observation end time (MET)	157557787.184000	157558432.24609			
Observation end date	2002-12-29T14:02:03	2002-12-29T14:13:52			
Read mode	TIMED	TIMED			

2.3 Aspect



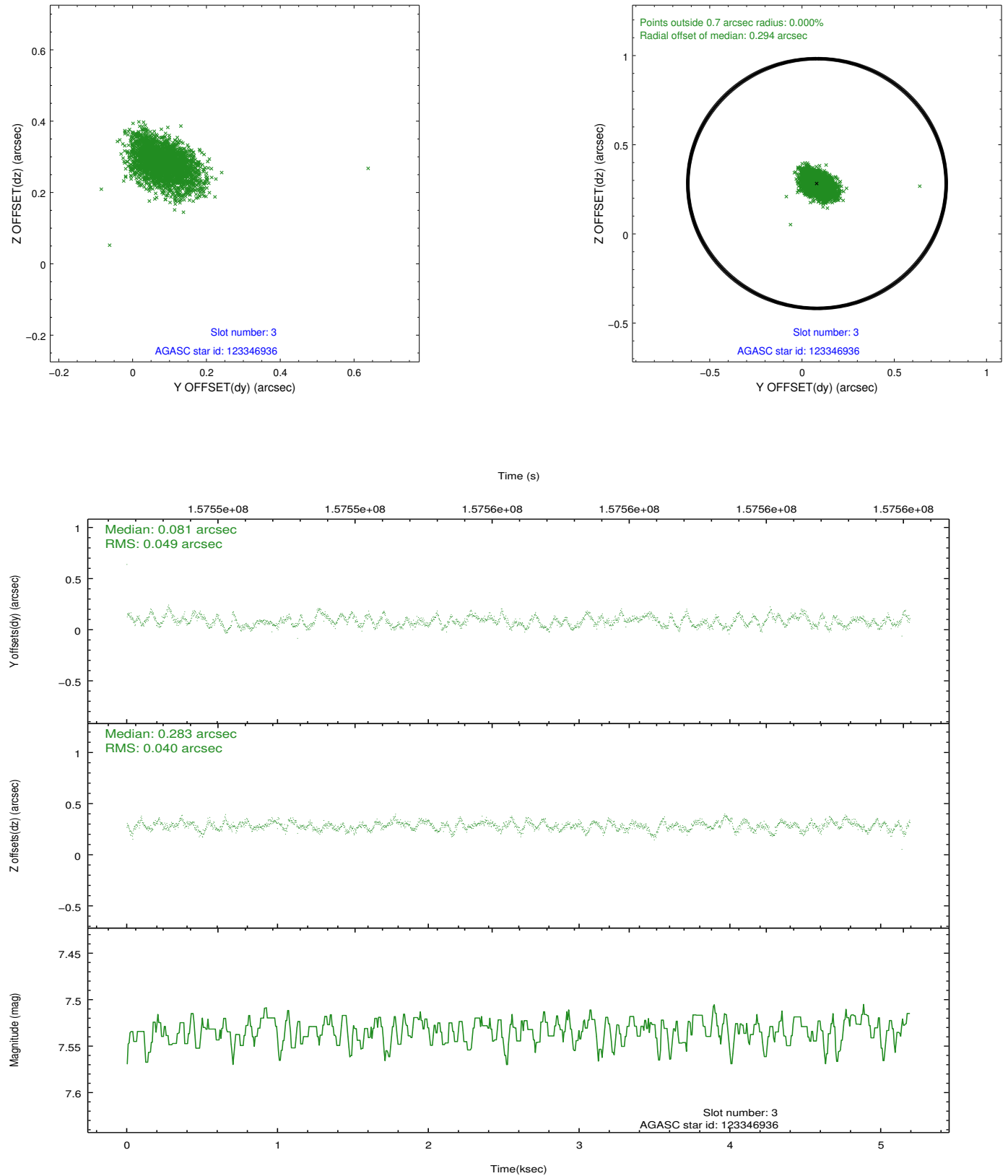


Slot Statistics

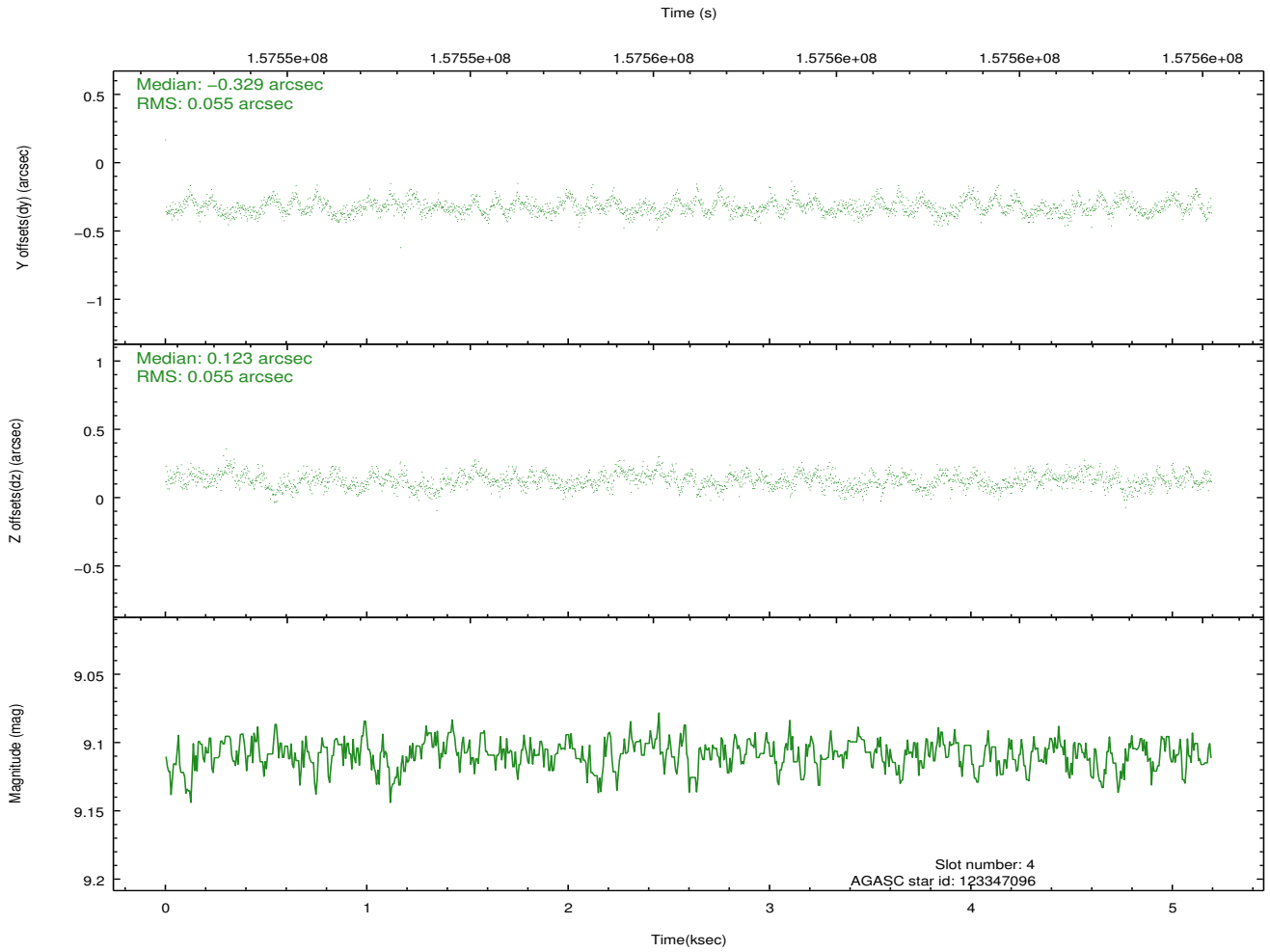
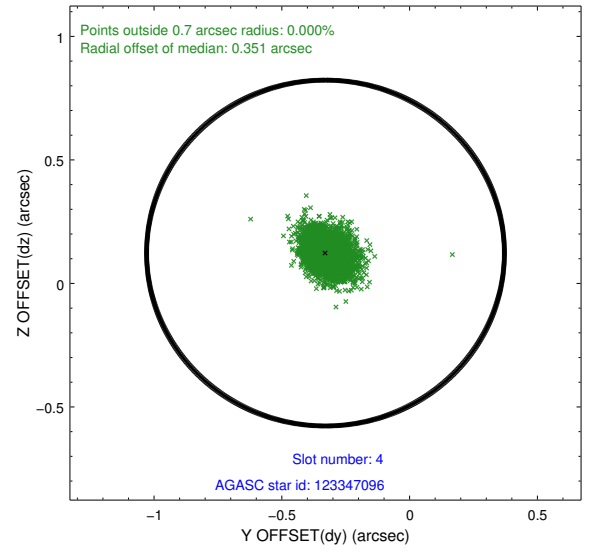
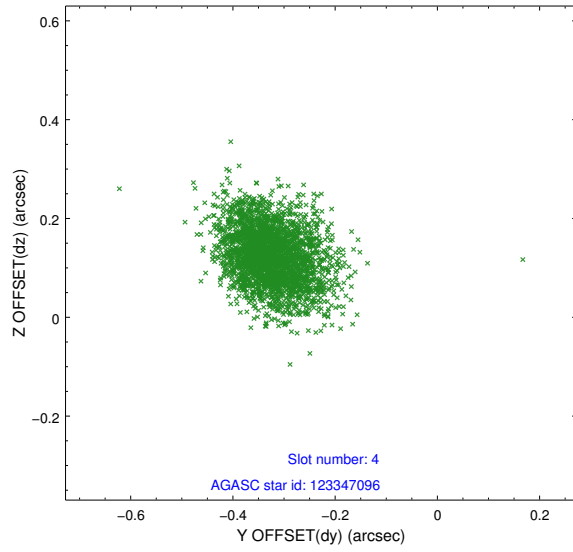
slot	status	id	mag	n_pts	med_dy	med_dz	dr1	dr2	ra	dec	mean_y	mean_z
0	FID	ACIS-S-2	7.11	1267	-0.024	-0.006	0.007	0.011	0.000000	0.000000	-755.34	-1730.12
1	FID	ACIS-S-4	7.20	1267	-0.006	0.014	0.005	0.010	0.000000	0.000000	2157.43	177.18
2	FID	ACIS-S-5	7.24	1267	-0.000	0.002	0.007	0.012	0.000000	0.000000	-1806.66	172.16
3	GUIDE	123346936	7.53	2534	0.081	0.283	0.065	0.108	234.177396	14.924785	542.45	-2005.53
4	GUIDE	123347096	9.11	2532	-0.329	0.123	0.081	0.135	234.204400	14.950389	673.49	-2017.54
5	GUIDE	195829424	9.56	2532	0.121	-0.106	0.099	0.157	233.264614	15.156582	-888.83	945.89
6	GUIDE	195830320	8.91	2533	0.078	-0.180	0.078	0.125	233.020814	15.074293	-1664.61	1399.53
7	GUIDE	195832112	8.85	2532	0.039	-0.121	0.081	0.136	233.081408	15.188449	-1215.61	1506.04

2.4 Star Slots

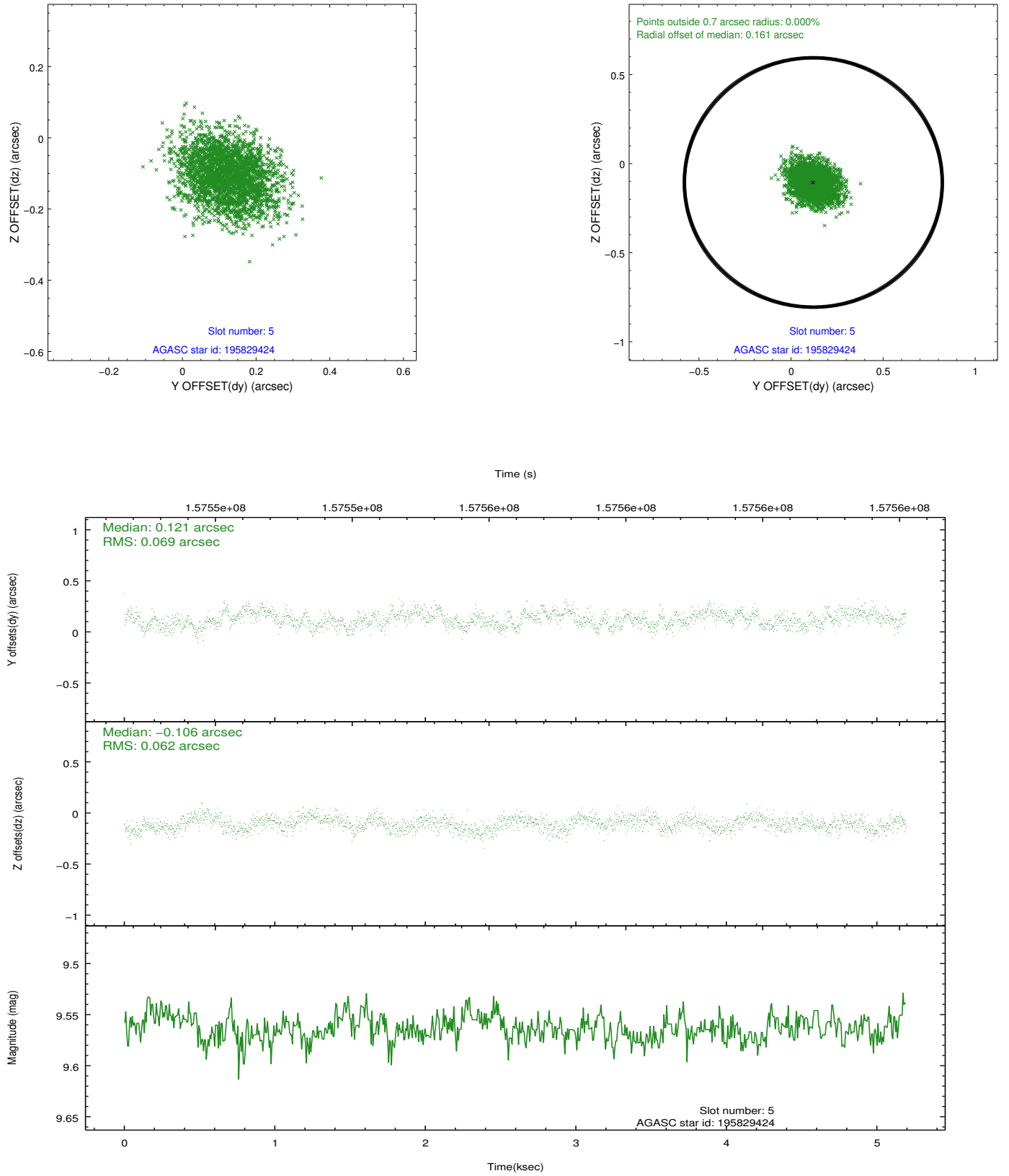
2.4.1 Slot 3



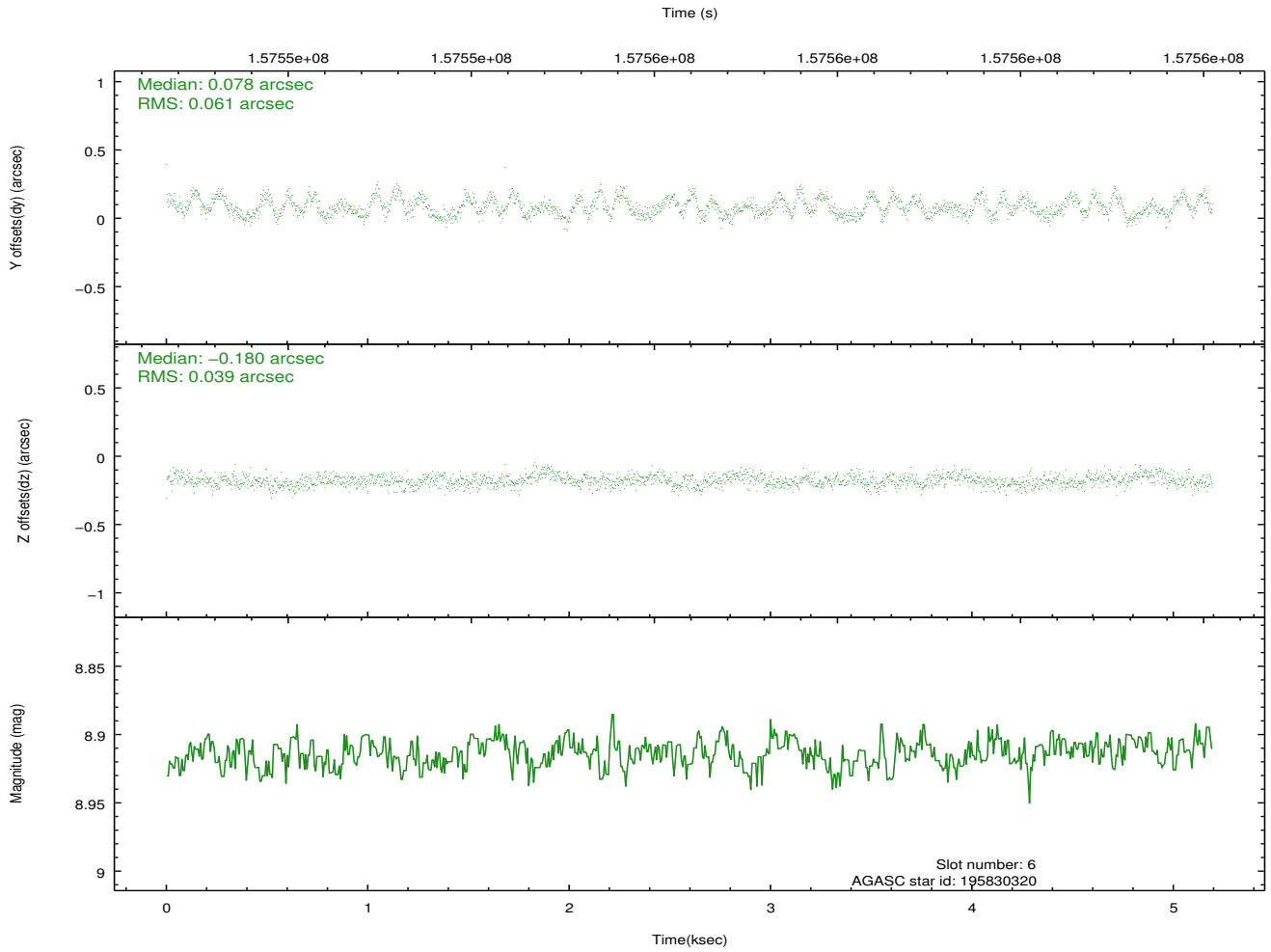
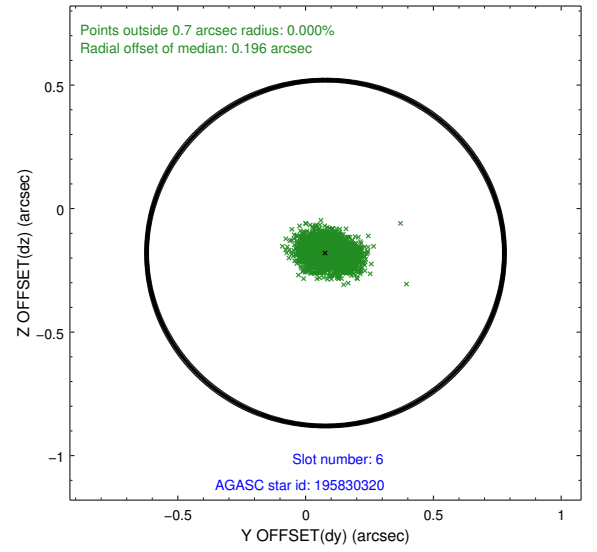
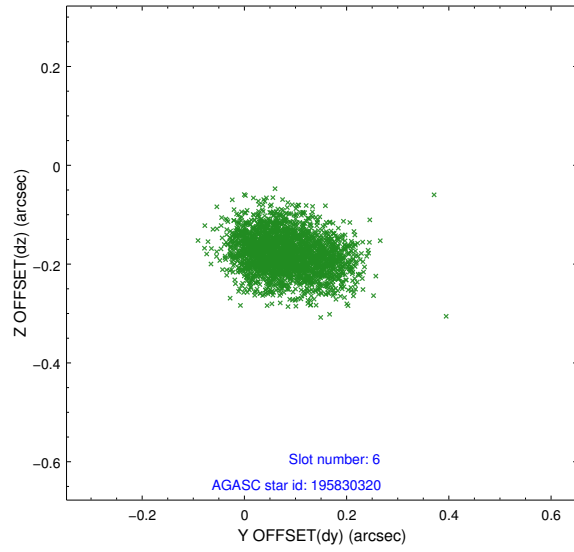
2.4.2 Slot 4



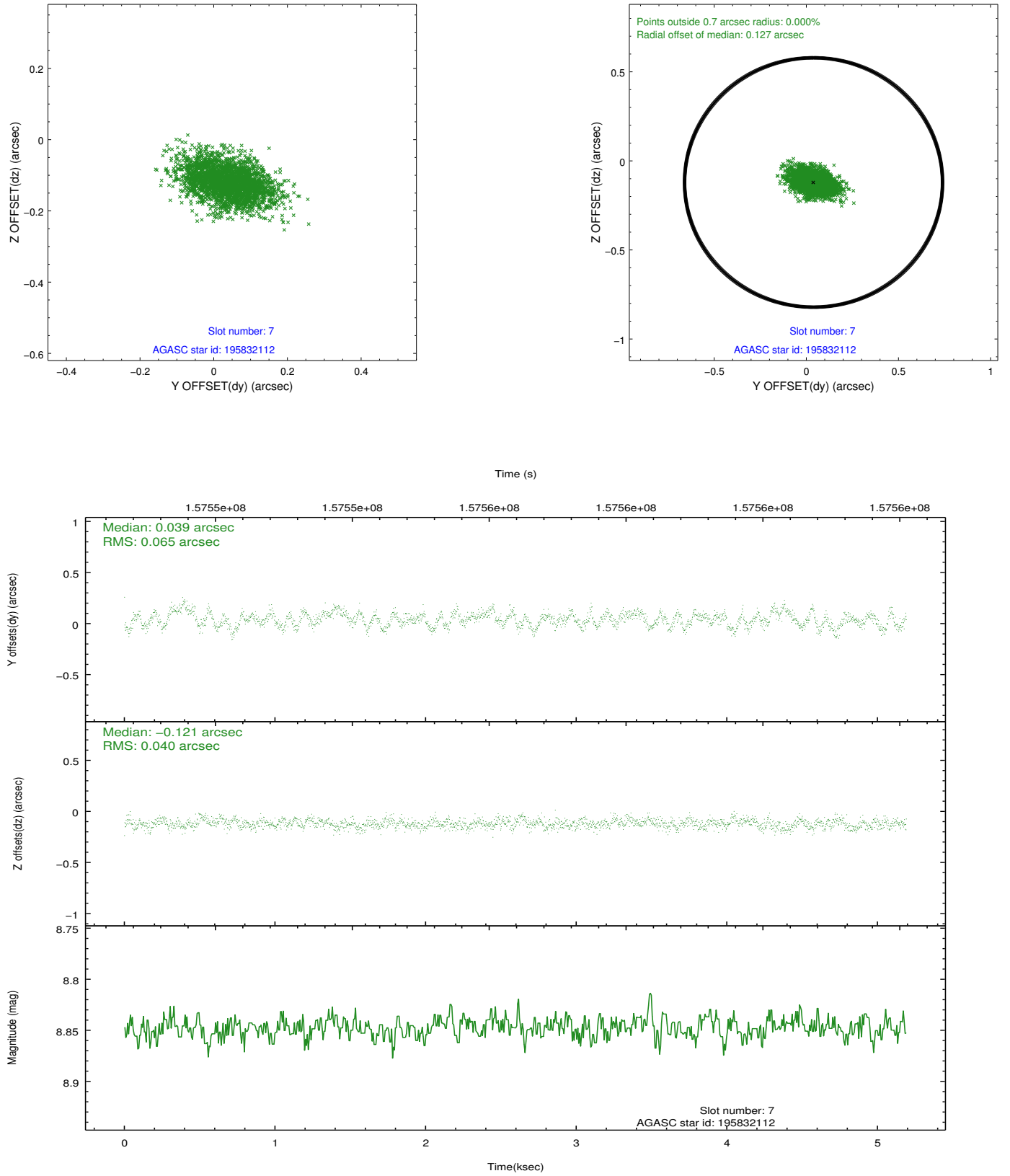
2.4.3 Slot 5



2.4.4 Slot 6

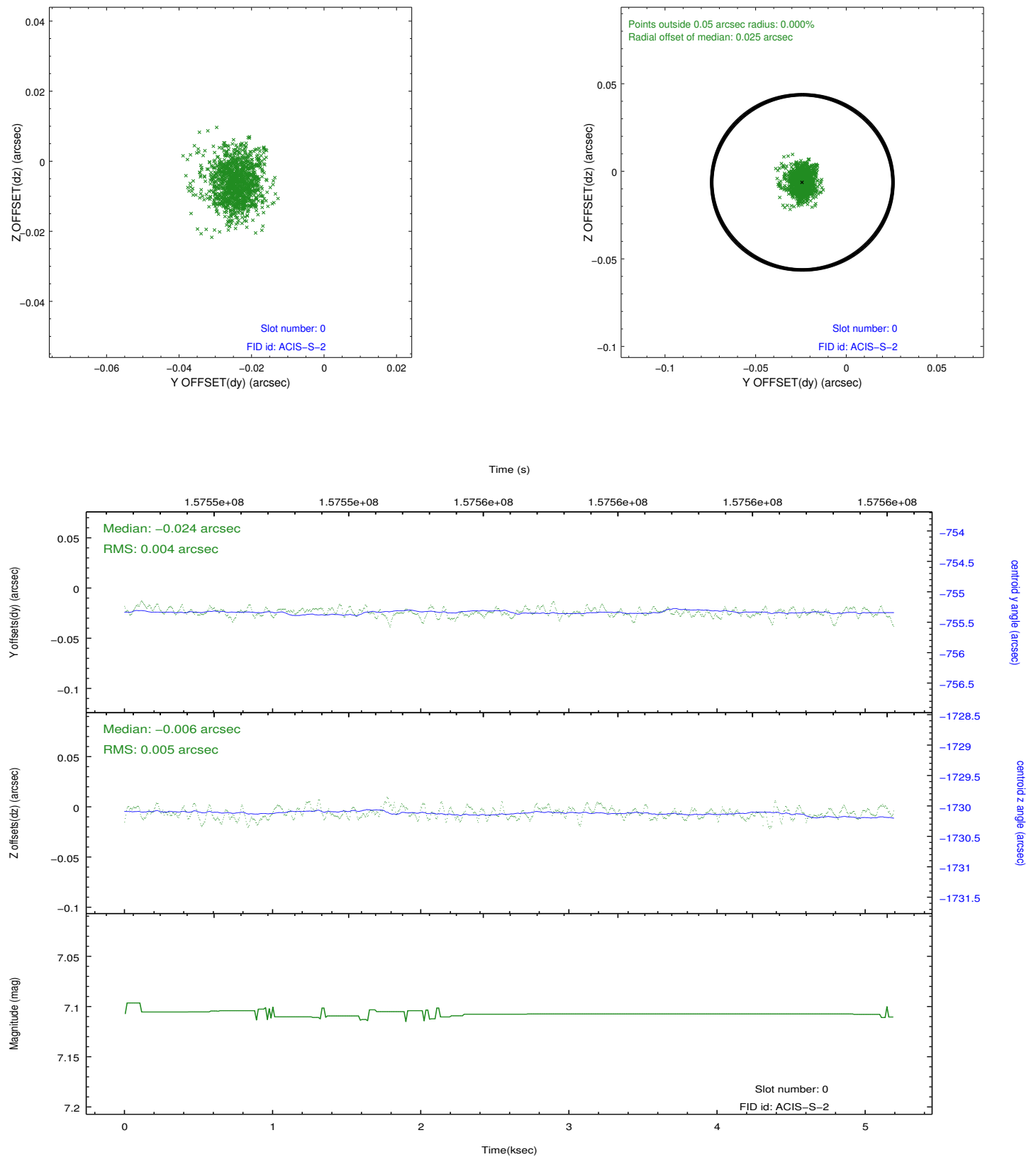


2.4.5 Slot 7

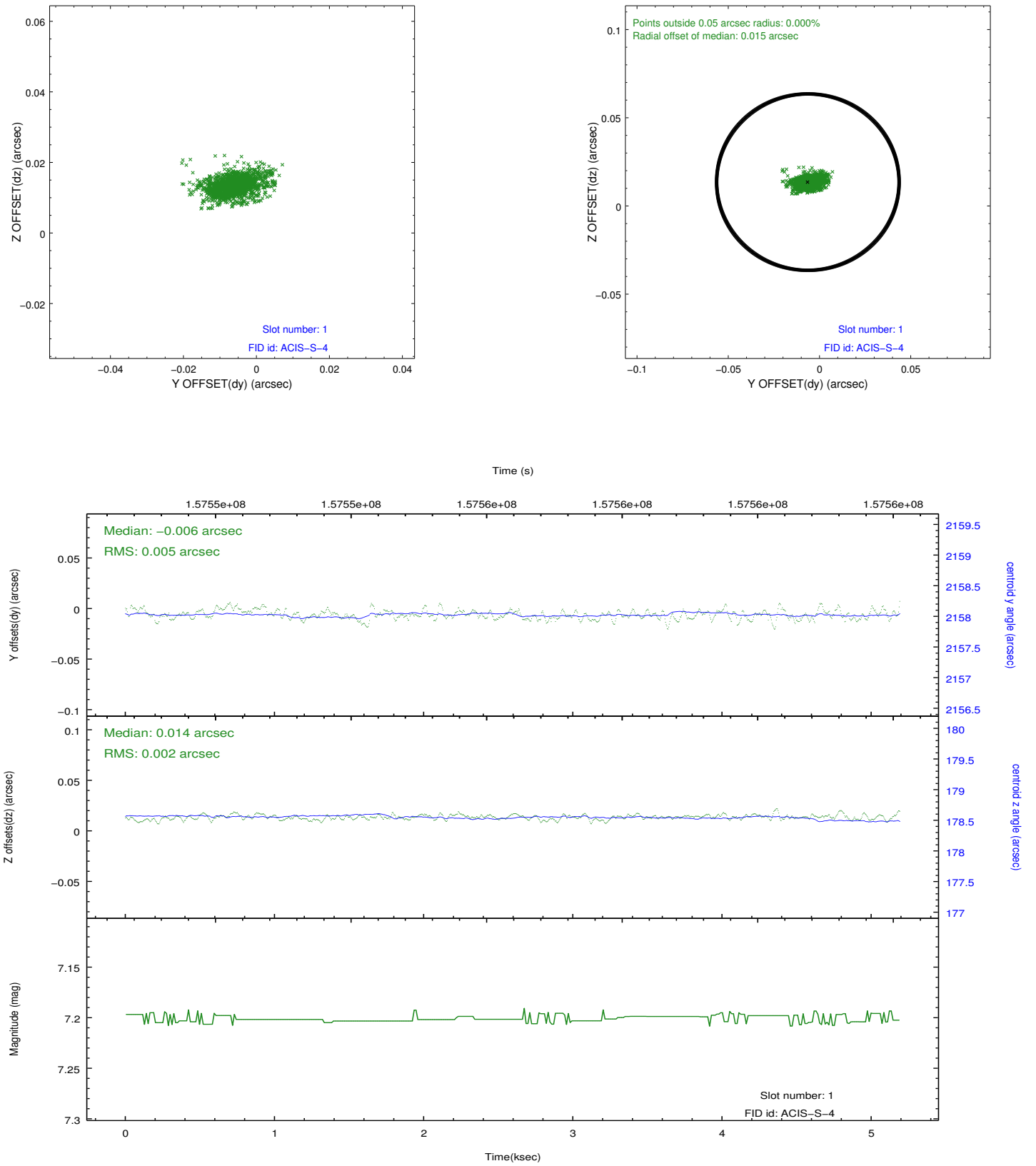


2.5 FID Slots

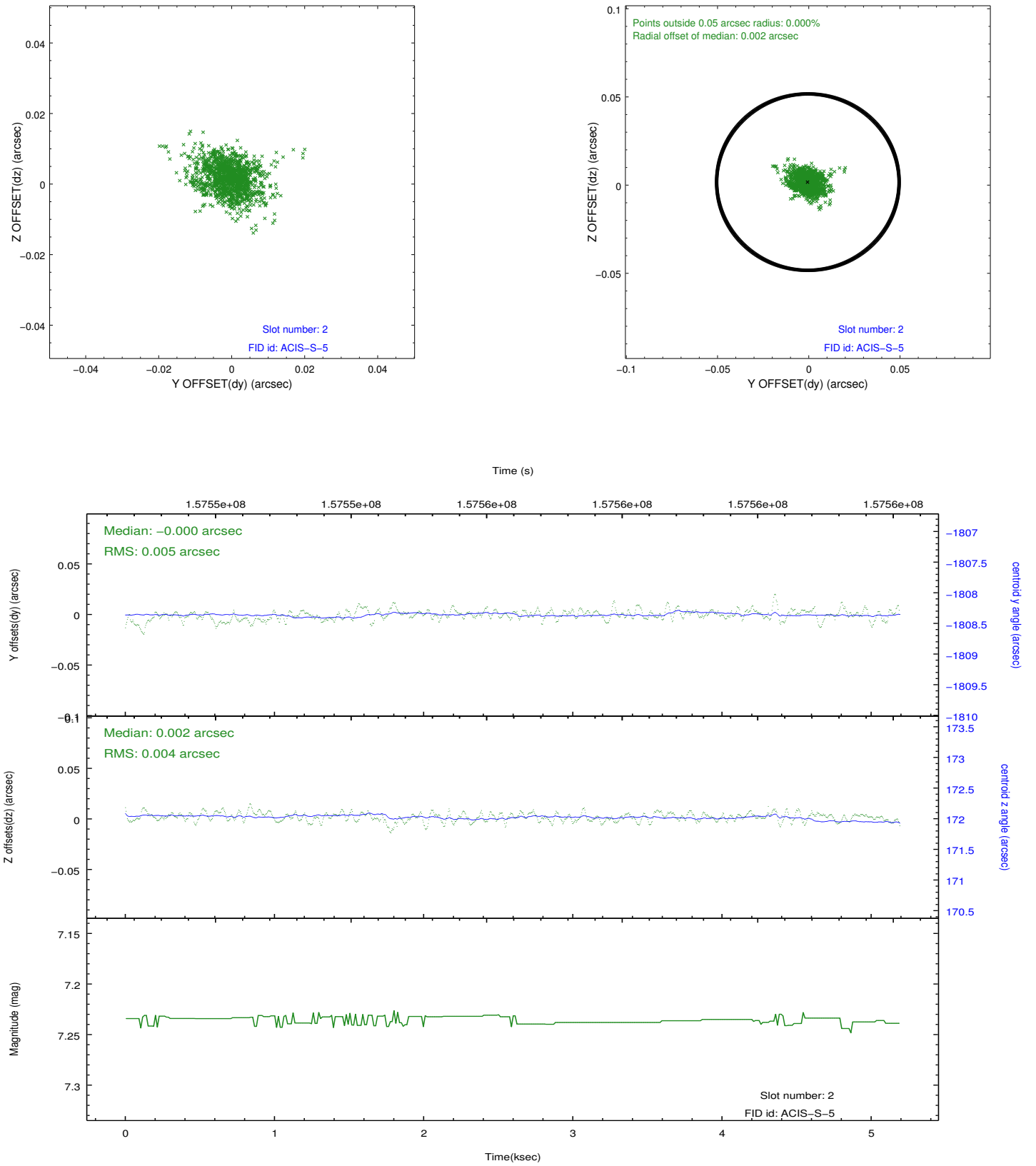
2.5.1 Slot 0



2.5.2 Slot 1



2.5.3 Slot 2



A Summary

A.1 Status

V&V Scientist	Jen Lauer
V&V Date (YYYY-MM-DD)	2012.10.31
V&V Edition	1
V&V Disposition and Status	OK
V&V Charge Time	4.755

A.2 Comments