

# V&V Reference Report

## L2 ASCDS Version : 7.6.9

Observation 4023 - L2 Version 001  
Chandra X-Ray Center

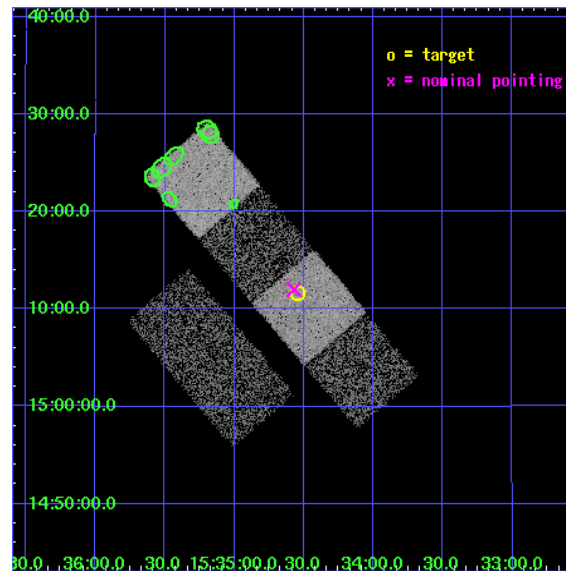
L2 Processing Date : Oct 16 2006

## Contents

<b>1</b>	<b>Front</b>	<b>2</b>
<b>2</b>	<b>OBI</b>	<b>3</b>
2.1	OBI . . . . .	3
2.1.1	Images . . . . .	3
2.1.2	Bias . . . . .	3
2.1.3	Parameters . . . . .	4
2.1.4	Events . . . . .	4
2.2	Compared Parameters . . . . .	5
2.3	Aspect . . . . .	6
2.4	Star Slots . . . . .	9
2.4.1	Slot 3 . . . . .	9
2.4.2	Slot 4 . . . . .	10
2.4.3	Slot 5 . . . . .	11
2.4.4	Slot 6 . . . . .	12
2.4.5	Slot 7 . . . . .	13
2.5	FID Slots . . . . .	14
2.5.1	Slot 0 . . . . .	14
2.5.2	Slot 1 . . . . .	15
2.5.3	Slot 2 . . . . .	16
<b>3</b>	<b>Point Sources</b>	<b>17</b>
<b>A</b>	<b>Summary</b>	<b>18</b>
A.1	Status . . . . .	18
A.2	Comments . . . . .	18

# 1 Front

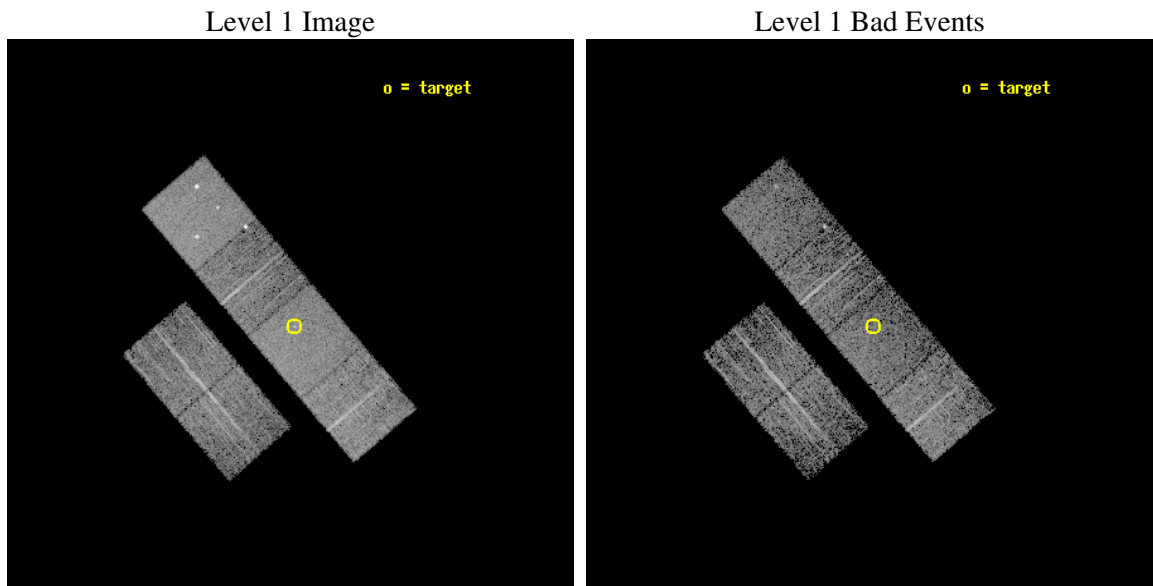
seq_num	700702
obs_id	4023
title	A CHANDRA SURVEY OF INFRARED-BRIGHT LINER GALAXIES
observer	Dr. Shobita Satyapal
object	NGC5953
dtcycle	0
cycle	P
ra_targ	233.635
dec_targ	15.194167
ra_nom	233.64268664614
dec_nom	15.200348484916
roll_nom	49.589834294766
revision	2
ontime	4755.1999822855
livetime	4694.9867768721
ontime2	4755.1999822855
ontime3	4755.1999822855
ontime5	4755.1999822855
ontime6	4755.1999822855
ontime7	4755.1999822855
ontime8	4751.9591415823
l2events	47874



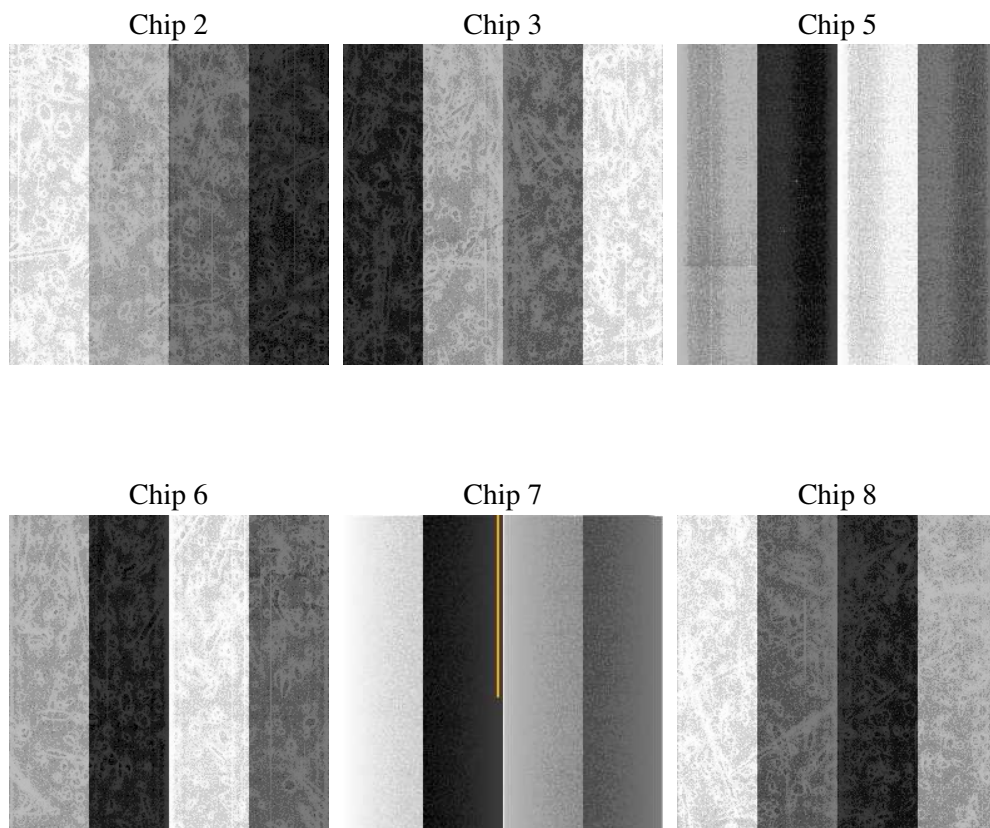
## 2 OBI

### 2.1 OBI

#### 2.1.1 Images



#### 2.1.2 Bias



### 2.1.3 Parameters

obi_num	1
ascdsver	7.6.9
caldbver	3.2.3
date	2006-10-16T04:37:31
revision	2

sched_exp_time	5000.000000
ontime	4757.787668556
ontime2	4757.787648648
ontime3	4761.0286587179
ontime5	4757.787668556
ontime6	4761.0286587179
ontime7	4757.787668556
ontime8	4757.7877183557
l1events	219698

### 2.1.4 Events

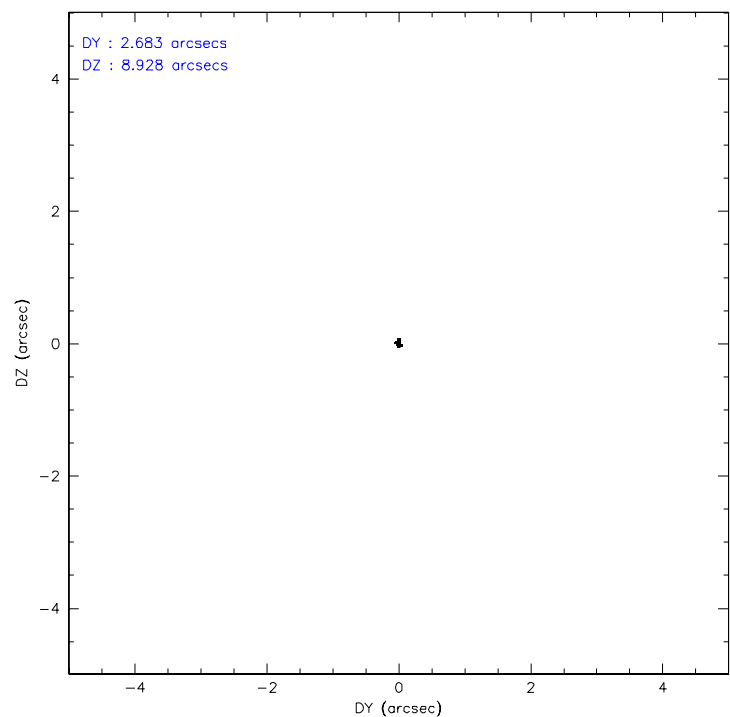
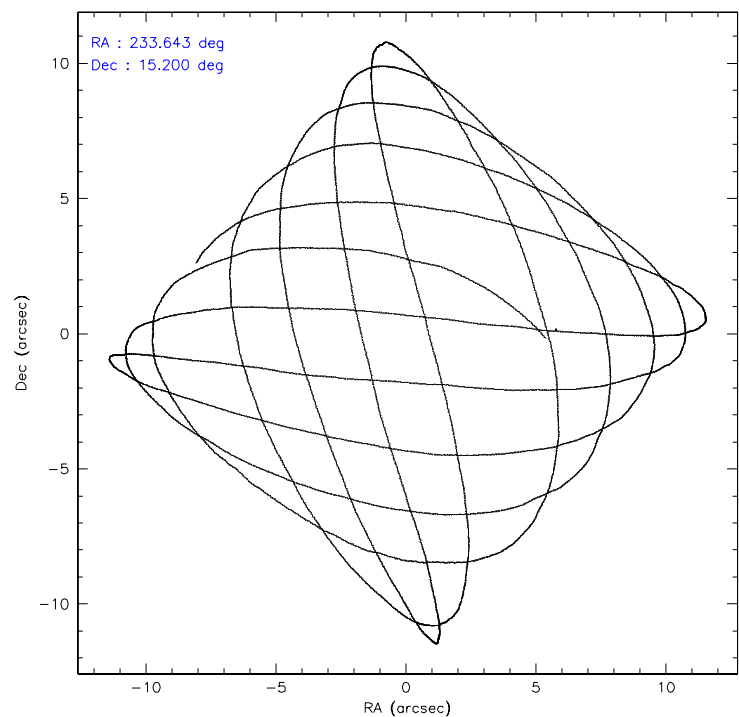
	ccd 2	ccd 3	ccd 5	ccd 6	ccd 7	ccd 8
level 1 events	30803	29440	46212	30222	40837	42184
rejected events	27246	26064	24482	26604	24259	34100
rejected %	88%	88%	52%	88%	59%	80%

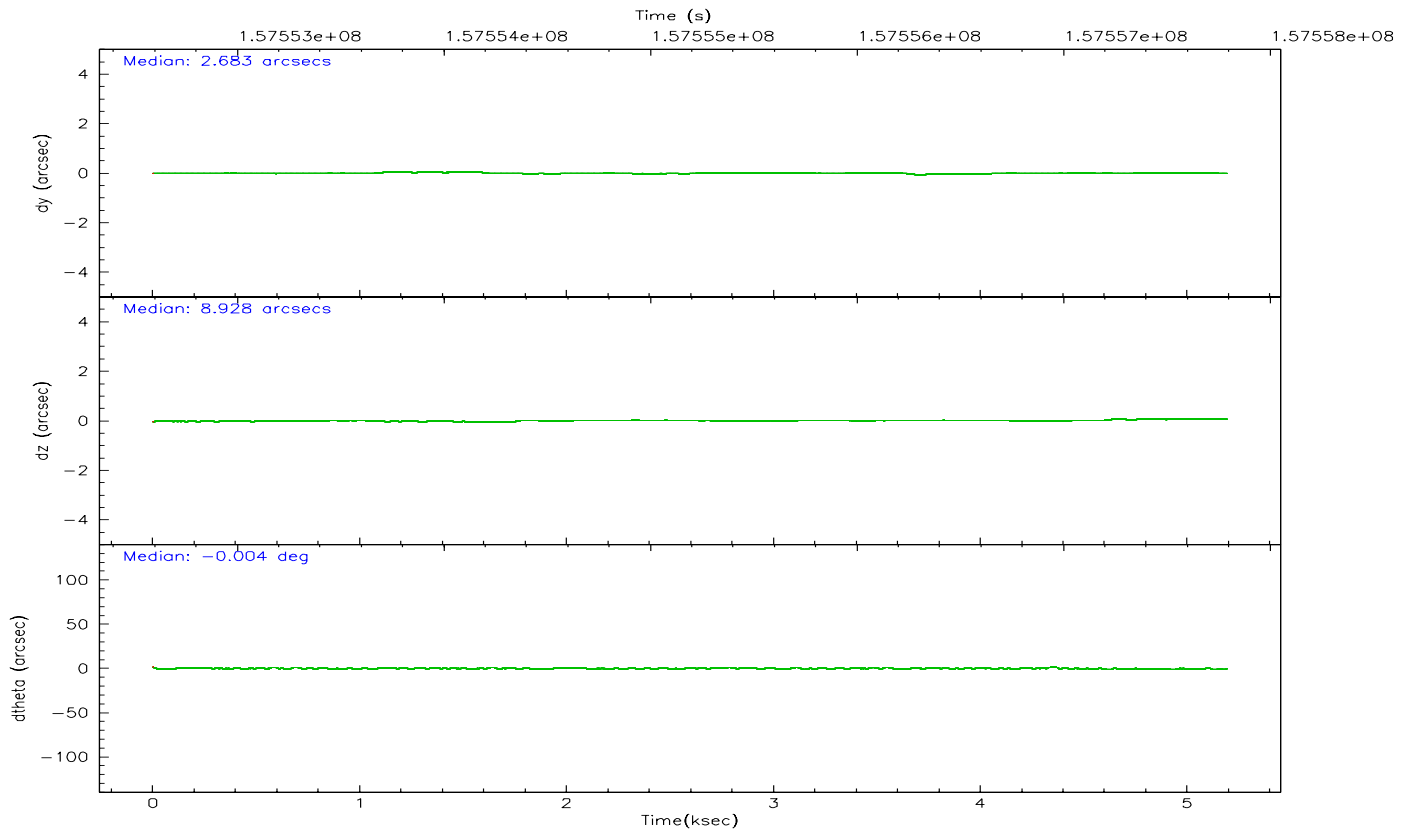
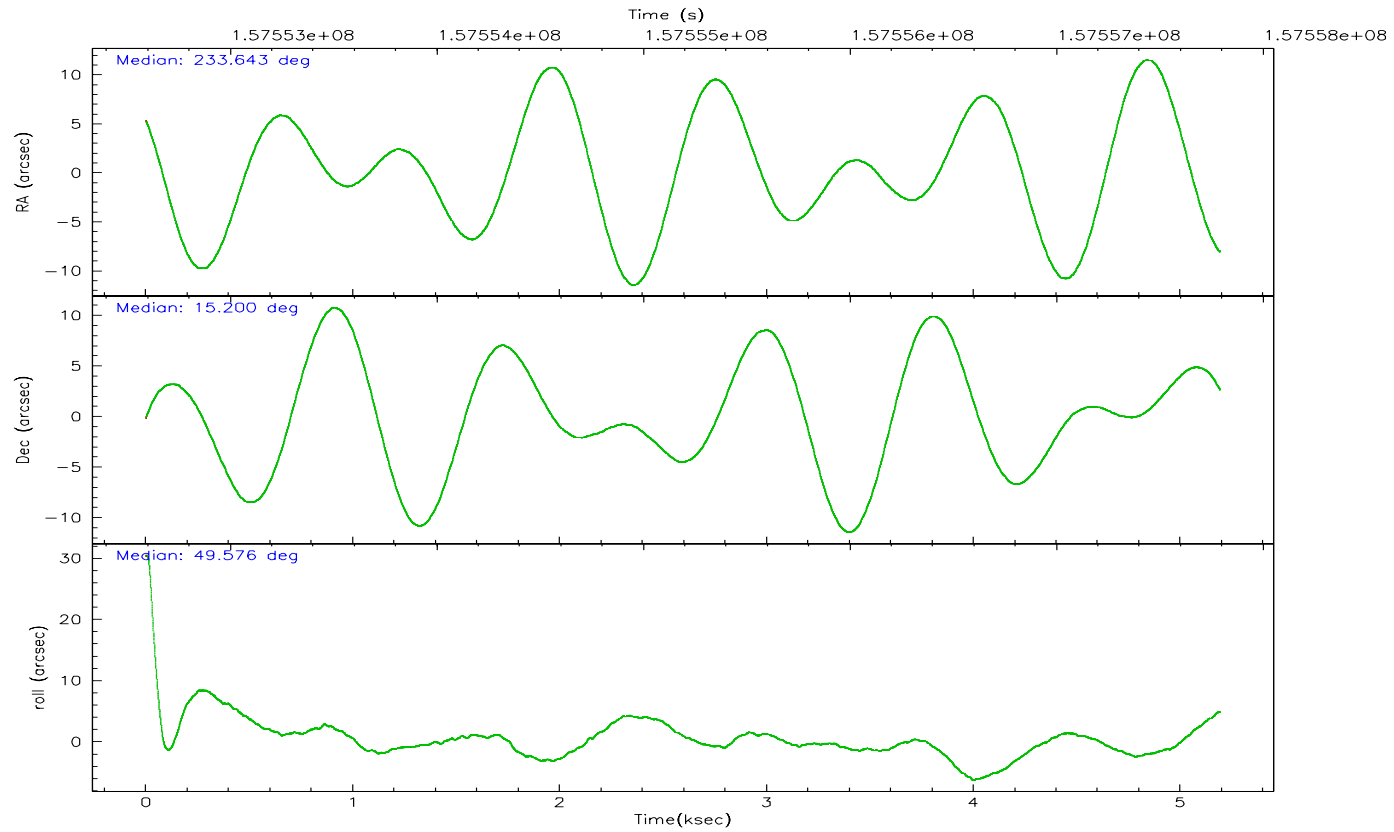
	ccd 2	ccd 3	ccd 5	ccd 6	ccd 7	ccd 8
grade 0 events	1551	1476	2986	1545	1264	2588
	5%	5%	6%	5%	3%	6%
grade 1 events	11	12	315	14	30	26
	0%	0%	0%	0%	0%	0%
grade 2 events	711	616	6420	684	4032	1751
	2%	2%	13%	2%	9%	4%
grade 3 events	342	366	530	360	982	876
	1%	1%	1%	1%	2%	2%
grade 4 events	353	325	573	347	936	781
	1%	1%	1%	1%	2%	1%
grade 5 events	1179	1305	2221	1332	2681	1744
	3%	4%	4%	4%	6%	4%
grade 6 events	601	599	11237	687	9378	2094
	1%	2%	24%	2%	22%	4%
grade 7 events	26055	24741	21930	25253	21534	32324
	84%	84%	47%	83%	52%	76%

## 2.2 Compared Parameters

Parameter	Planned	Actual	Parameter	Planned	Actual
Instrument	ACIS	ACIS	Obspar format version number	6	6
Detector	ACIS-235678	ACIS-235678	Obspar file type	PREDICTED	ACTUAL
Grating	NONE	NONE	Obspar update status	NONE	UPDATED
Data mode	FAINT	FAINT	Number of optional ACIS chips dropped	0	0
Observation mode	POINTING	POINTING	On-chip summing requested	N	N
Pointing RA	233.638008	233.6426866461446	Subarray requested	NONE	NONE
Pointing Dec	15.173470	15.20034848491571	Alternating exposures requested	N	N
Pointing Roll	49.434362	49.58983429476565	Primary exposure time	0.000000	3.2
SIM focus pos (mm)	-0.684267	-0.6828225247311905			
SIM defocus (mm)	0	0.001444936568705701			
SIM translation stage pos (mm)	-190.132523	-190.1425803651734			
SIM translation stage offset (mm)	0	0.01005778216563158			
Observation start time	157552787.184000	157552224.33333			
Observation start date	2002-12-29T12:38:43	2002-12-29T12:30:24			
Observation end time	157557787.184000	157558432.24609			
Observation end date	2002-12-29T14:02:03	2002-12-29T14:13:52			
Read mode	TIMED	TIMED			

## 2.3 Aspect





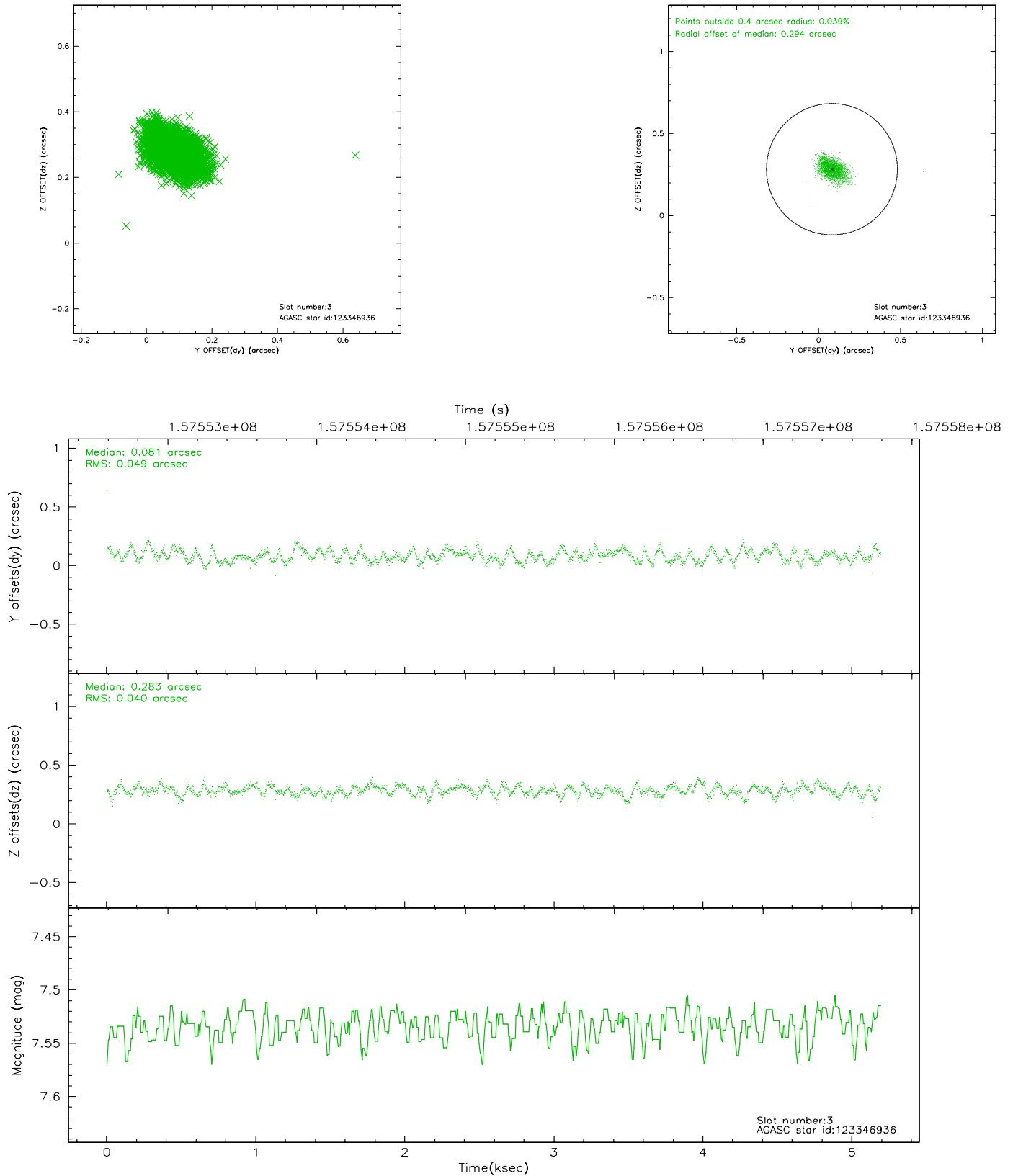
### Slot Statistics

slot	status	id	mag	n_pts	med_dy	med_dz	dr1	dr2	ra	dec	mean_y	mean_z
0	FID	ACIS-S-2	7.11	1267	-0.013	0.017	0.006	0.012	0.000000	0.000000	-755.32	-1730.08
1	FID	ACIS-S-4	7.20	1267	-0.048	0.002	0.005	0.008	0.000000	0.000000	2157.39	177.19
2	FID	ACIS-S-5	7.24	1267	0.030	-0.010	0.006	0.011	0.000000	0.000000	-1806.63	172.17
3	GUIDE	123346936	7.53	2534	0.081	0.283	0.065	0.108	234.177396	14.924785	542.45	-2005.53
4	GUIDE	123347096	9.11	2532	-0.329	0.123	0.081	0.135	234.204400	14.950389	673.49	-2017.54
5	GUIDE	195829424	9.56	2532	0.121	-0.106	0.099	0.157	233.264614	15.156582	-888.83	945.89
6	GUIDE	195830320	8.91	2533	0.078	-0.180	0.078	0.125	233.020814	15.074293	-1664.61	1399.53
7	GUIDE	195832112	8.85	2532	0.039	-0.121	0.081	0.136	233.081408	15.188449	-1215.61	1506.04

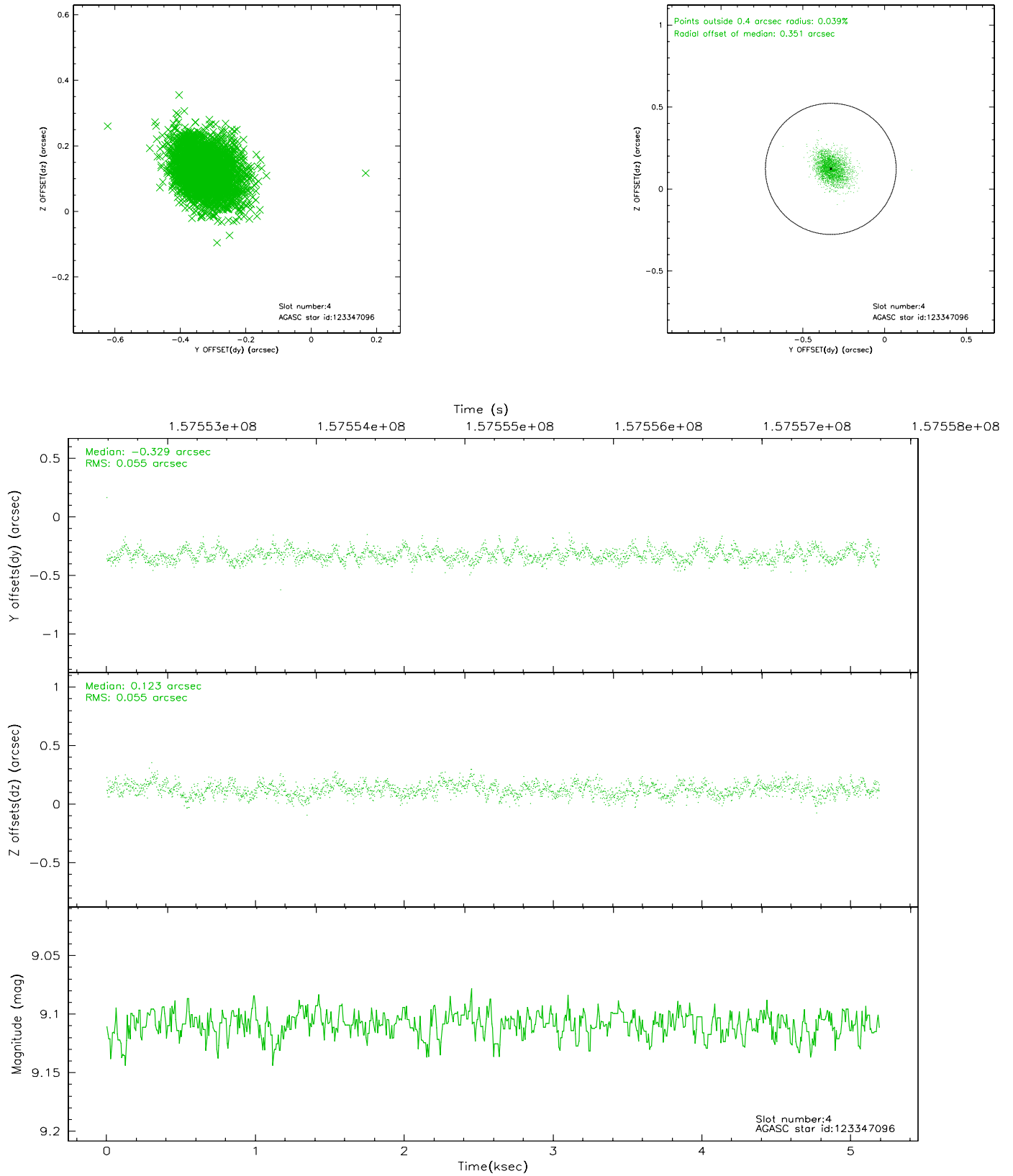


## 2.4 Star Slots

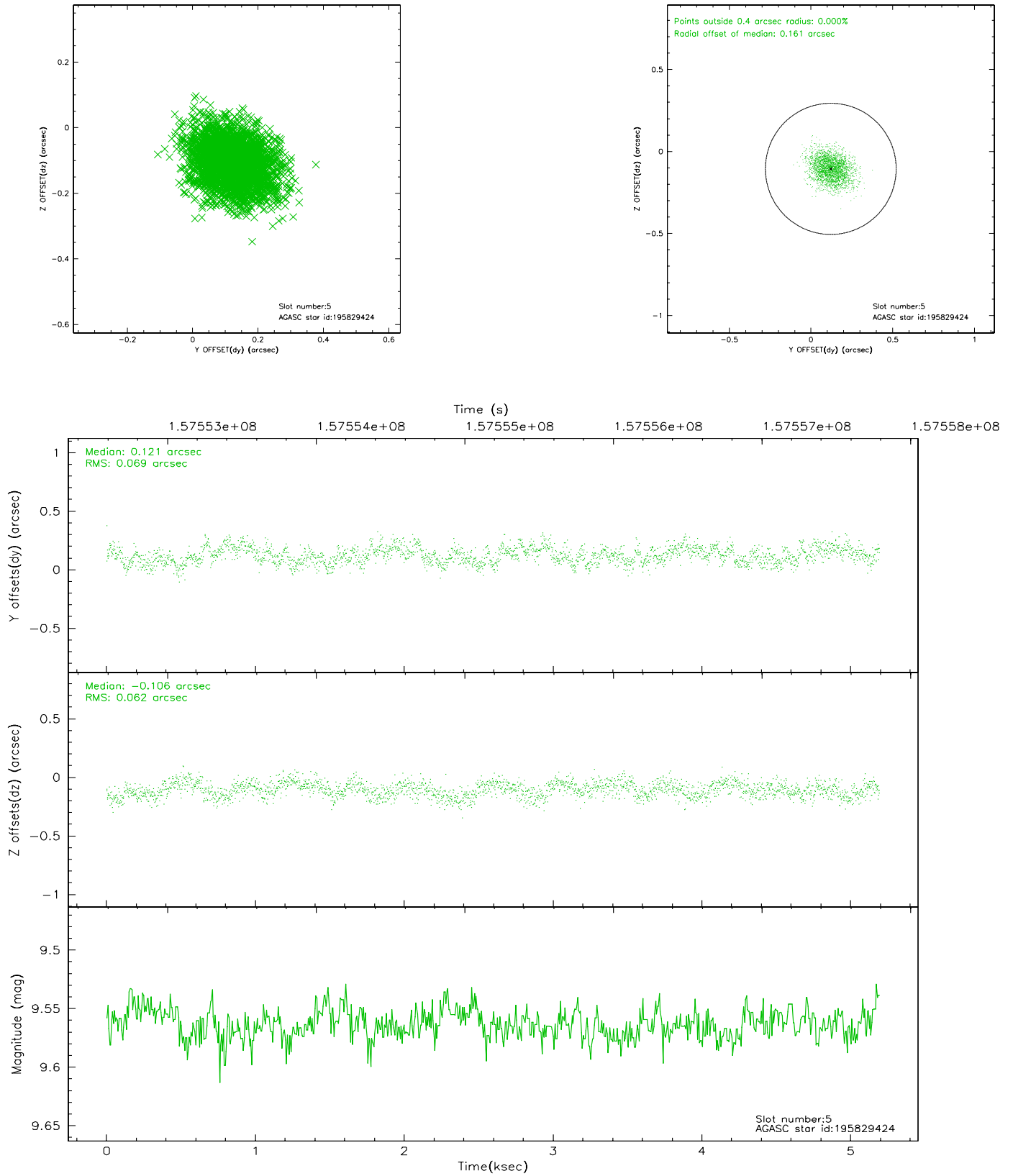
### 2.4.1 Slot 3



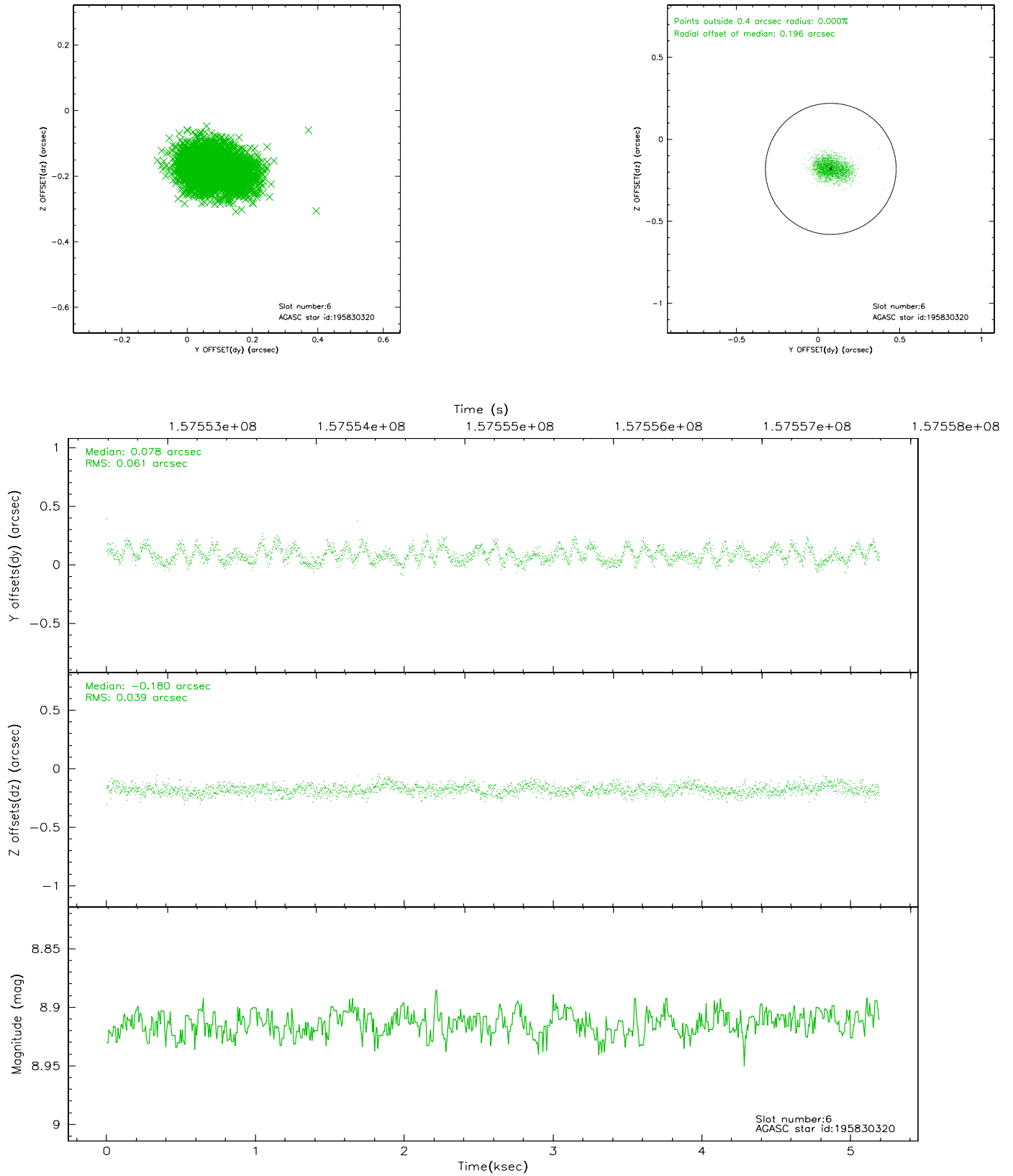
## 2.4.2 Slot 4



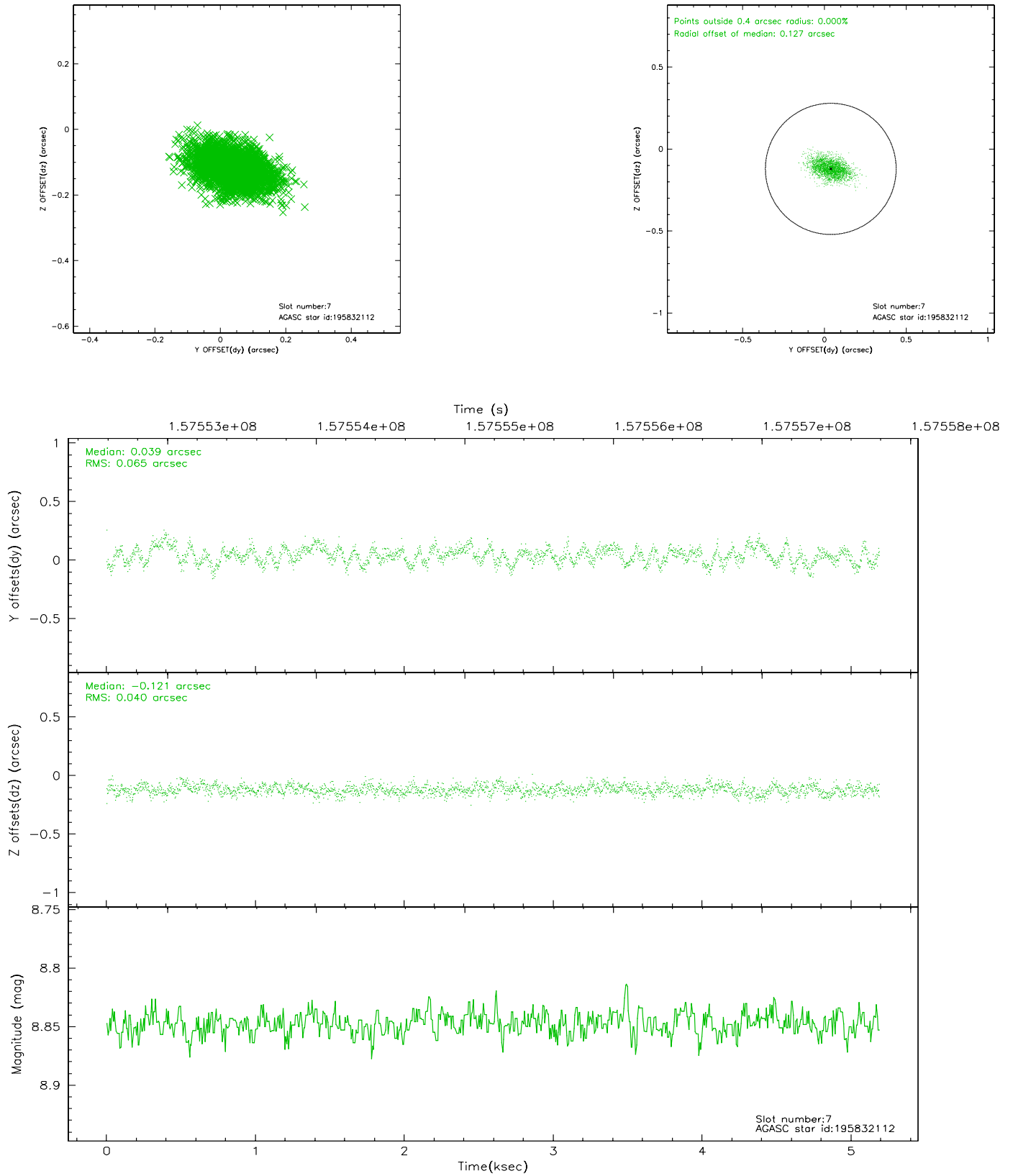
### 2.4.3 Slot 5



## 2.4.4 Slot 6

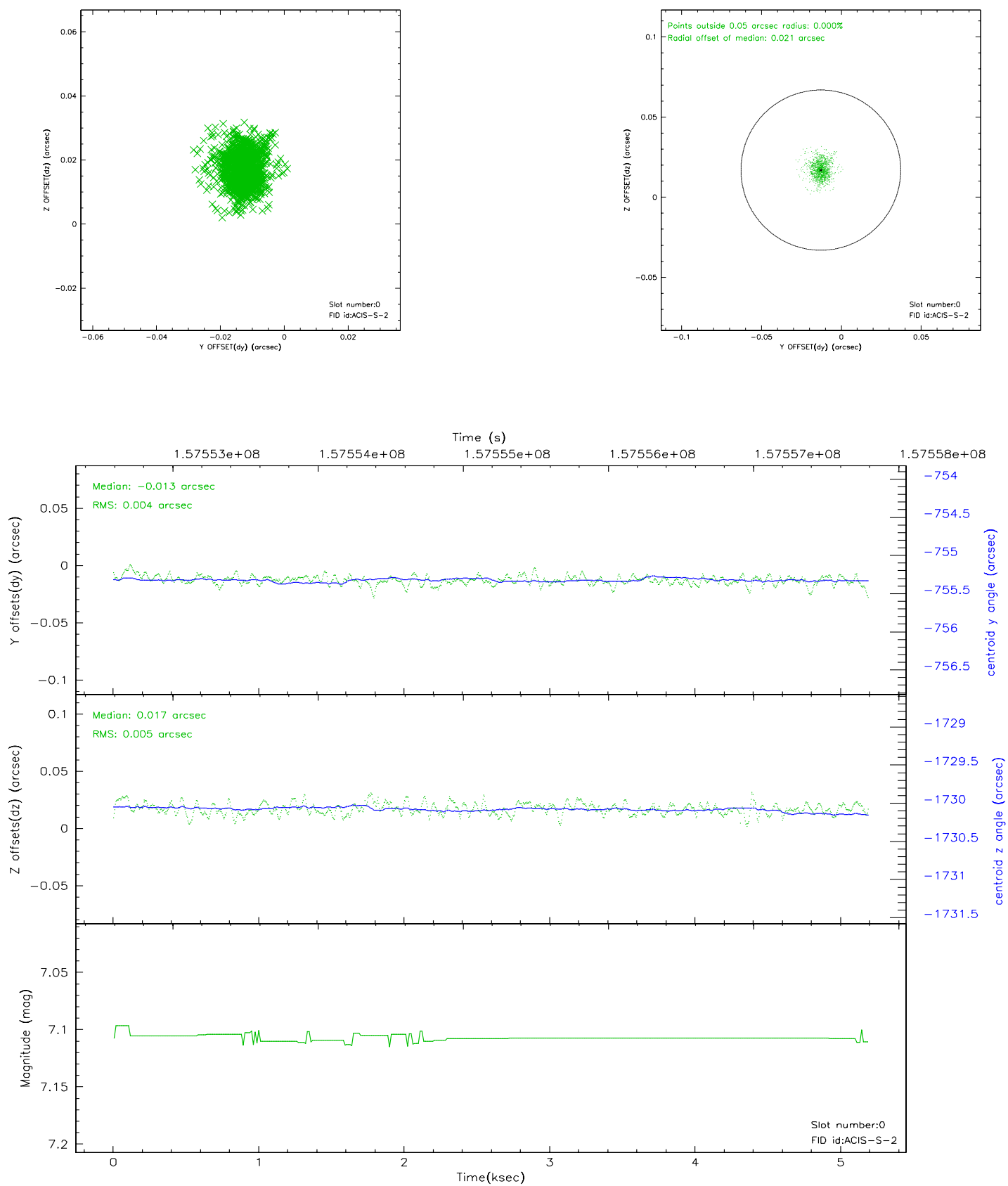


## 2.4.5 Slot 7

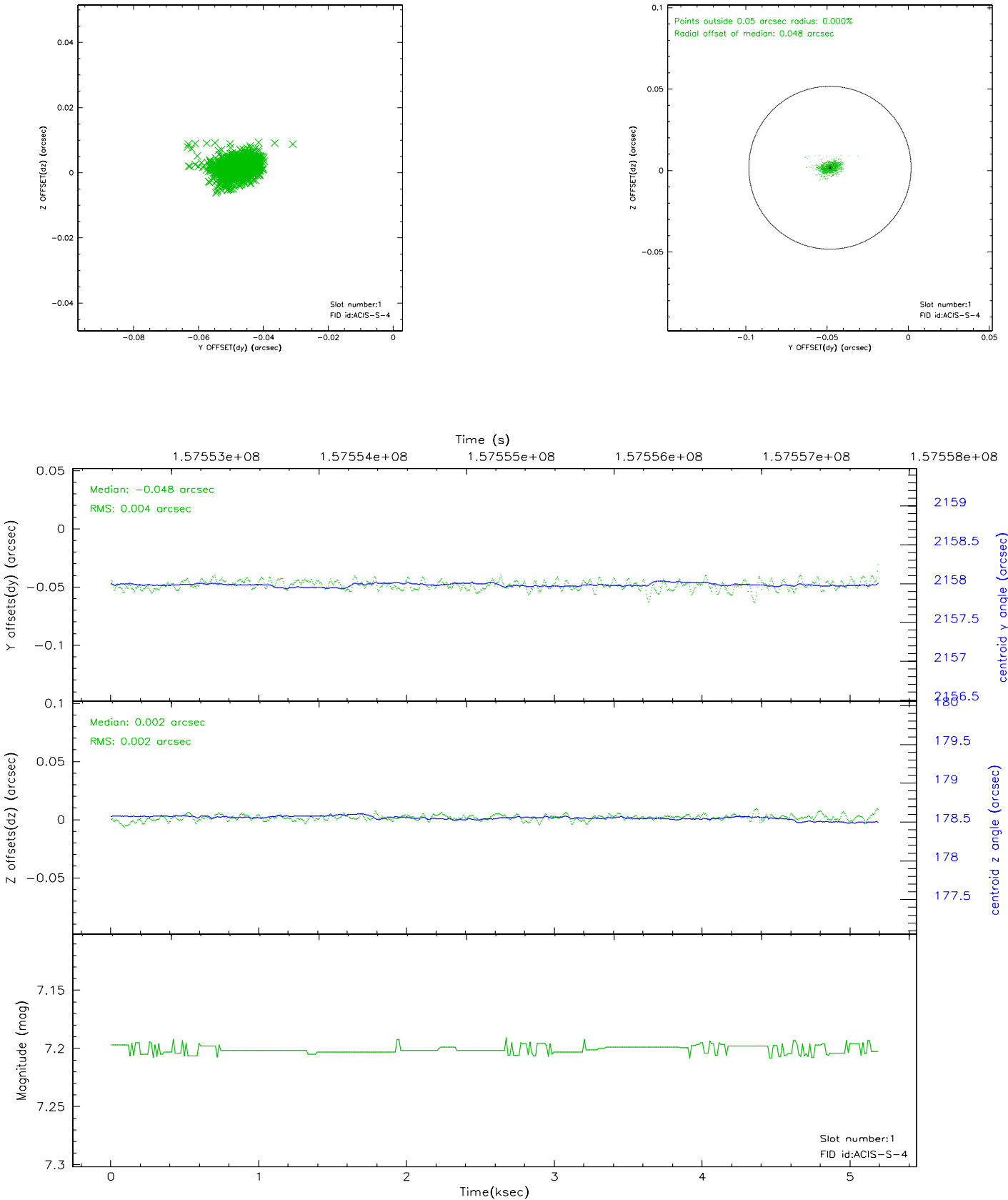


## 2.5 FID Slots

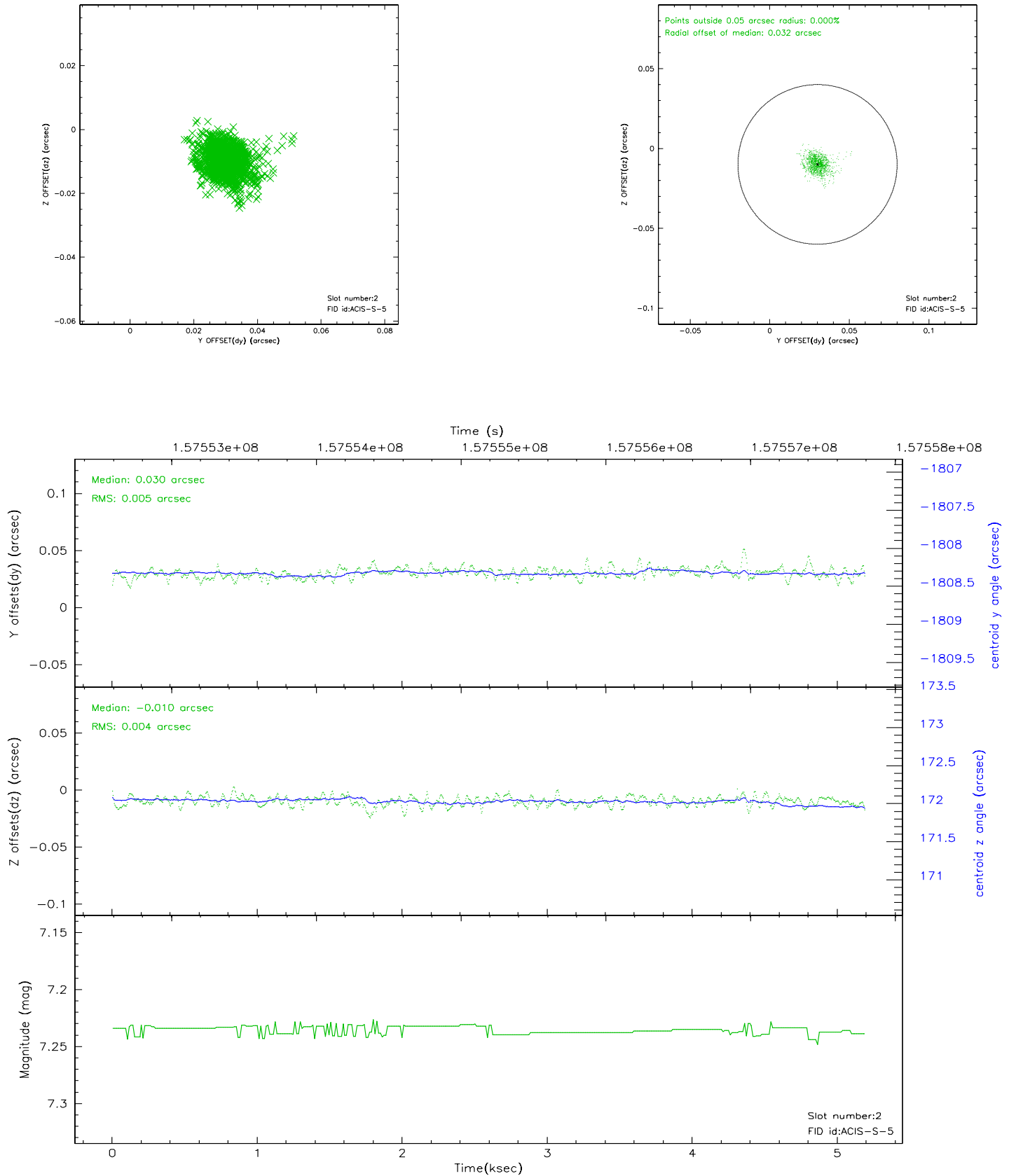
### 2.5.1 Slot 0



2.5.2 Slot 1

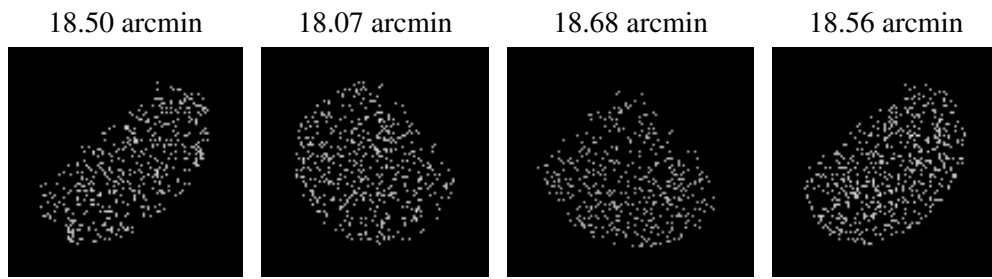


### 2.5.3 Slot 2





### 3 Point Sources



## A Summary

### A.1 Status

V&V Scientist	Beth Sundheim
V&V Date (YYYY-MM-DD)	2006.10.16
V&V Edition	1
V&V Disposition and Status	OK
V&V Charge Time	4.755

### A.2 Comments