

# V&V Reference Report

## L2 ASCDS Version : 8.4.5

Observation 4019 - L2 Version 3  
Chandra X-Ray Center

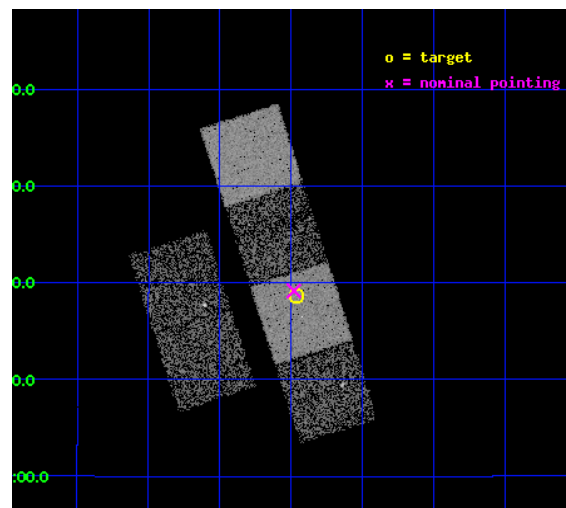
L2 Processing Date : Oct 21 2012

## Contents

<b>1</b>	<b>Front</b>	<b>2</b>
<b>2</b>	<b>OBI</b>	<b>3</b>
2.1	OBI . . . . .	3
2.1.1	Images . . . . .	3
2.1.2	Bias . . . . .	3
2.1.3	Parameters . . . . .	4
2.1.4	Events . . . . .	4
2.2	Compared Parameters . . . . .	5
2.3	Aspect . . . . .	6
2.4	Star Slots . . . . .	9
2.4.1	Slot 3 . . . . .	9
2.4.2	Slot 4 . . . . .	10
2.4.3	Slot 5 . . . . .	11
2.4.4	Slot 6 . . . . .	12
2.4.5	Slot 7 . . . . .	13
2.5	FID Slots . . . . .	14
2.5.1	Slot 0 . . . . .	14
2.5.2	Slot 1 . . . . .	15
2.5.3	Slot 2 . . . . .	16
<b>A</b>	<b>Summary</b>	<b>17</b>
A.1	Status . . . . .	17
A.2	Comments . . . . .	17

# 1 Front

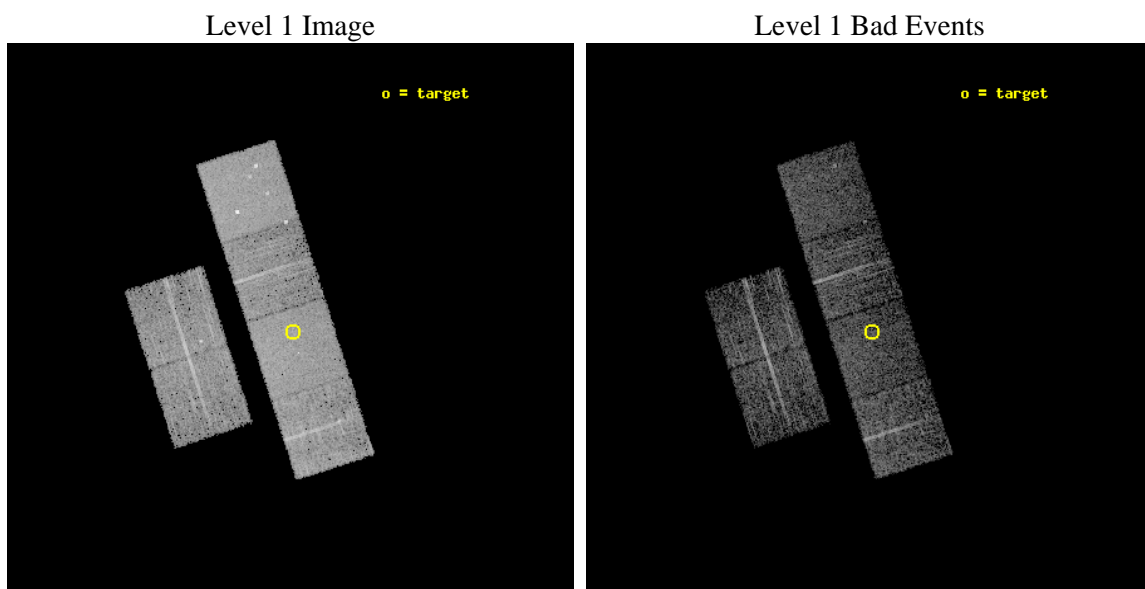
seq_num	700698	Sequence number
obs_id	4019	Observation id
title	A CHANDRA SURVEY OF INFRARED-BRIGHT LINER GALAXIES	Proposal title
observer	Dr. Shobita Satyapal	Principal investigator
object	NGC4713	Source name
dtcycle	0	&#160
cycle	P	events from which exps? Prim/Second/Both
ra_targ	192.490833	Observer's specified target RA [deg]
dec_targ	5.310833	Observer's specified target Dec [deg]
ra_nom	192.49529456889	Nominal RA [deg]
dec_nom	5.3192463421534	Nominal Dec [deg]
roll_nom	72.138355709479	Nominal Roll [deg]
revision	3	Processing version of data
ontime	4963.1999815106	Sum of GTIs [s]
livetime	4900.3529548645	Livetime [s]
ontime2	4963.1999815106	Sum of GTIs [s]
ontime3	4963.1999815106	Sum of GTIs [s]
ontime5	4963.1999815106	Sum of GTIs [s]
ontime6	4963.1999815106	Sum of GTIs [s]
ontime7	4963.1999815106	Sum of GTIs [s]
ontime8	4963.1999815106	Sum of GTIs [s]
l2events	48012	Number of level 2 events



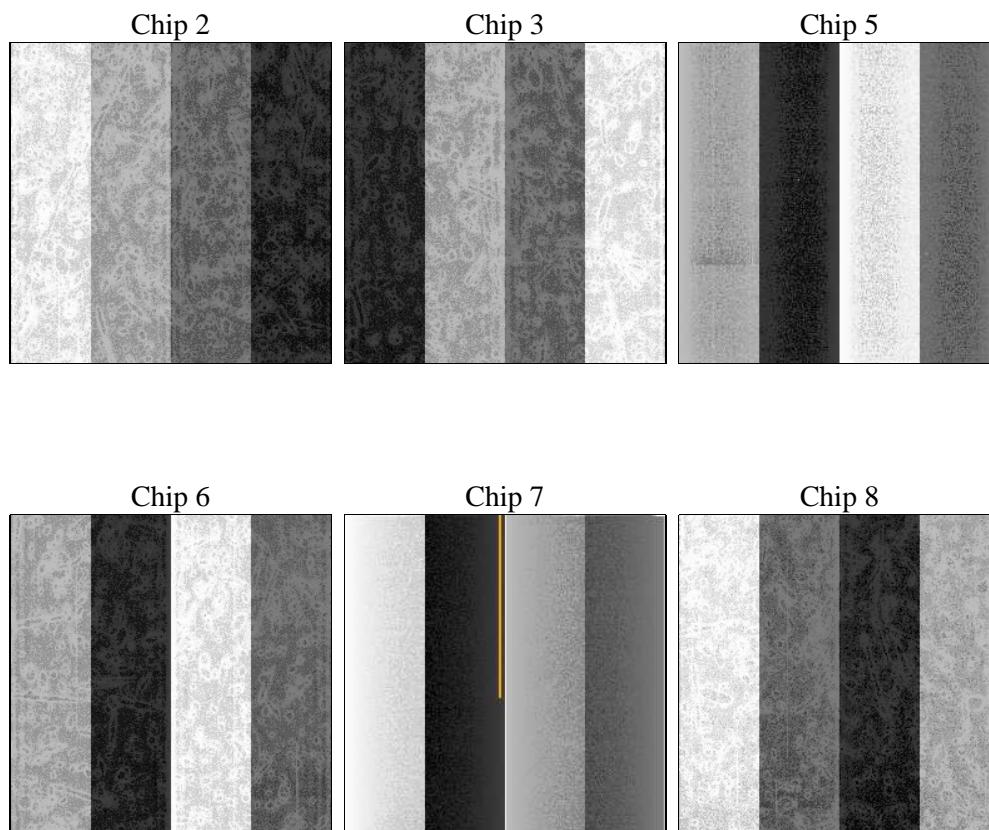
## 2 OBI

### 2.1 OBI

#### 2.1.1 Images



#### 2.1.2 Bias



### 2.1.3 Parameters

obi_num	0	Obi number	sched_exp_time	5000.000000	[s] Scheduled observation exposure time
ascdsver	8.4.5	Processing system revision	ontime	4963.1999815106	Sum of GTIs [s]
caldsver	4.5.2	&#160	ontime2	4963.1999815106	Sum of GTIs [s]
date	2012-10-21T05:33:46	Date and time of file creation	ontime3	4963.1999815106	Sum of GTIs [s]
revision	3	Processing version of data	ontime5	4963.1999815106	Sum of GTIs [s]
			ontime6	4963.1999815106	Sum of GTIs [s]
			ontime7	4963.1999815106	Sum of GTIs [s]
			ontime8	4963.1999815106	Sum of GTIs [s]
			l1events	212102	Number of level 1 events

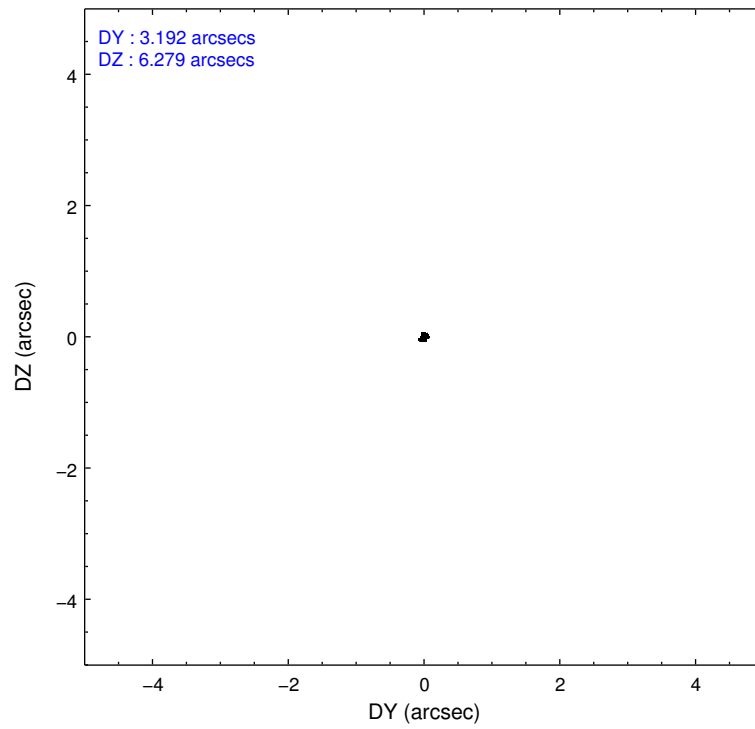
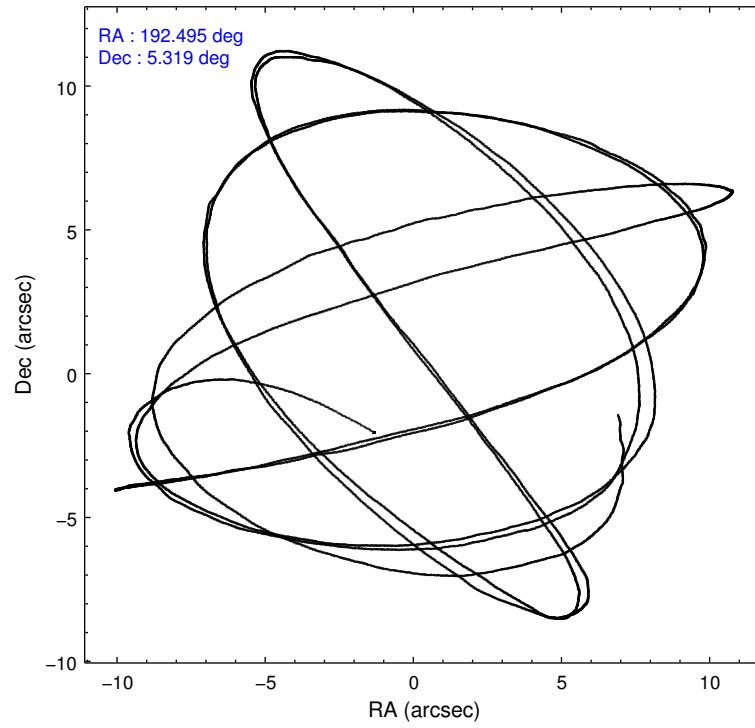
### 2.1.4 Events

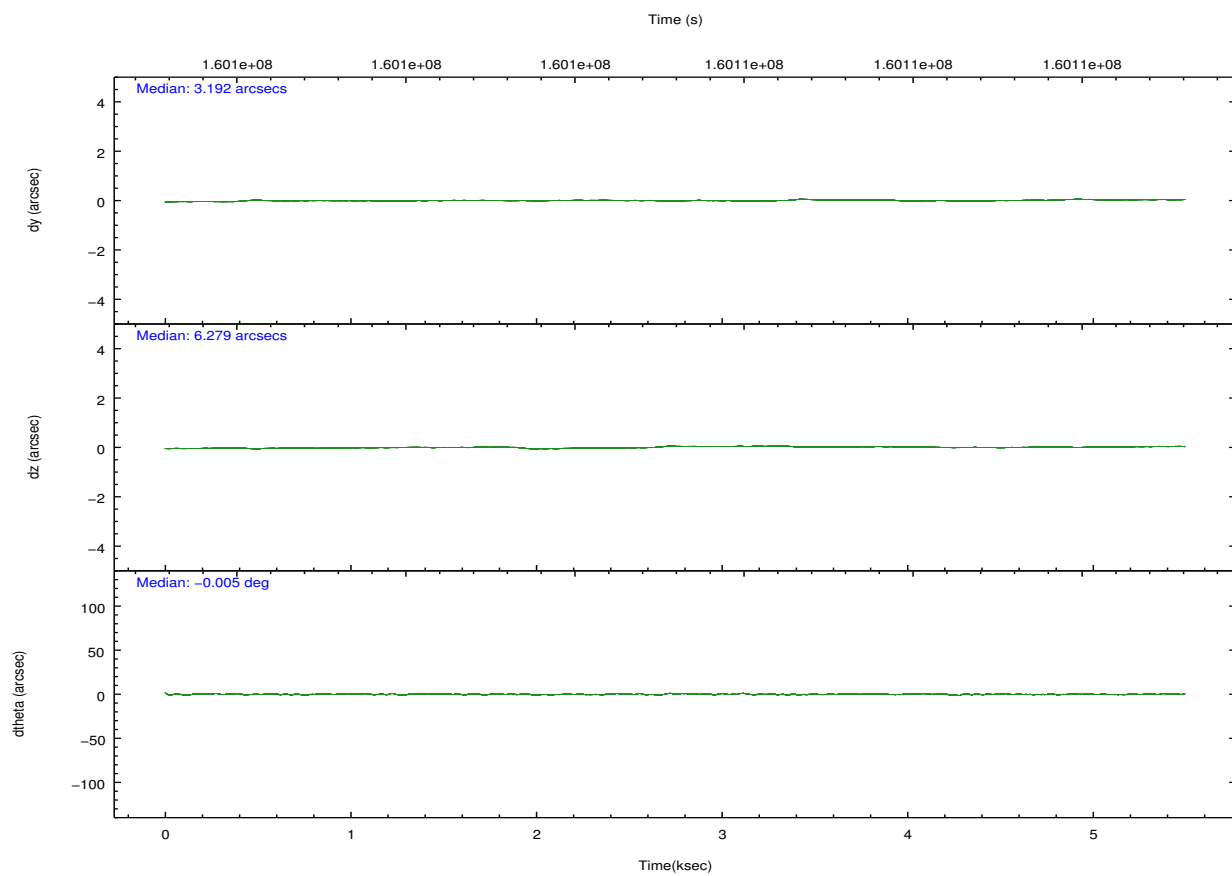
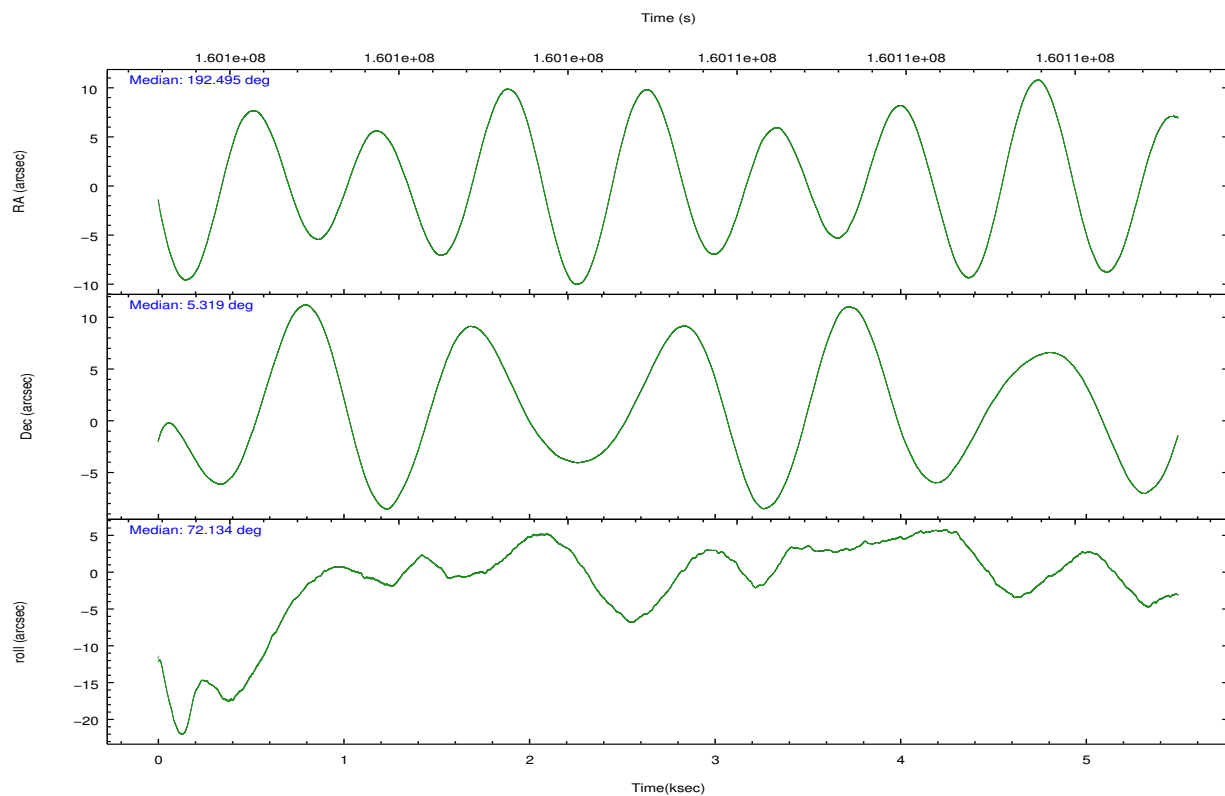
	ccd 2	ccd 3	ccd 5	ccd 6	ccd 7	ccd 8		ccd 2	ccd 3	ccd 5	ccd 6	ccd 7	ccd 8
level 1 events	30881	28689	46280	29389	39470	37393	grade 0 events	1770	1520	3430	1499	1672	2765
rejected events	27131	25215	24217	25719	22930	29009		5%	5%	7%	5%	4%	7%
rejected %	87%	87%	52%	87%	58%	77%	grade 1 events	21	11	144	17	52	26
								0%	0%	0%	0%	0%	0%
							grade 2 events	713	690	6498	737	3391	1857
								2%	2%	14%	2%	8%	4%
							grade 3 events	353	357	805	347	1419	841
								1%	1%	1%	1%	3%	2%
							grade 4 events	316	325	764	367	1419	797
								1%	1%	1%	1%	3%	2%
							grade 5 events	1128	1285	3237	1306	3716	1691
								3%	4%	6%	4%	9%	4%
							grade 6 events	601	587	10580	721	8648	2128
								1%	2%	22%	2%	21%	5%
							grade 7 events	25979	23914	20822	24395	19153	27288
								84%	83%	44%	83%	48%	72%

## 2.2 Compared Parameters

Parameter	Planned	Actual	Parameter	Planned	Actual
Instrument	ACIS	ACIS	Obspar format version number	7	7
Detector	ACIS-235678	ACIS-235678	Obspar file type	PREDICTED	ACTUAL
Grating	NONE	NONE	Obspar update status	NONE	UPDATED
Data mode	FAINT	FAINT	Number of optional ACIS chips dropped	0	0
Observation mode	POINTING	POINTING	On-chip summing requested	N	N
[deg] Pointing RA	192.501500	192.495294568887	Subarray requested	NONE	NONE
[deg] Pointing Dec	5.292838	5.319246342153405	Alternating exposures requested	N	N
[deg] Pointing Roll	71.981130	72.13835570947876	[s] Primary exposure time	0.000000	3.2
[mm] SIM focus pos	-0.684267	-0.6828225247311905			
[mm] SIM defocus	0	0.001444936568705701			
[mm] SIM translation stage pos	-190.132523	-190.1425803651734			
[mm] SIM translation stage offset	0	0.01005778216563158			
[s] Observation start time (MET)	160103341.184000	160102224.05253			
Observation start date	2003-01-28T01:07:57	2003-01-28T00:50:24			
[s] Observation end time (MET)	160108341.184000	160108912.17781			
Observation end date	2003-01-28T02:31:17	2003-01-28T02:41:52			
Read mode	TIMED	TIMED			

## 2.3 Aspect



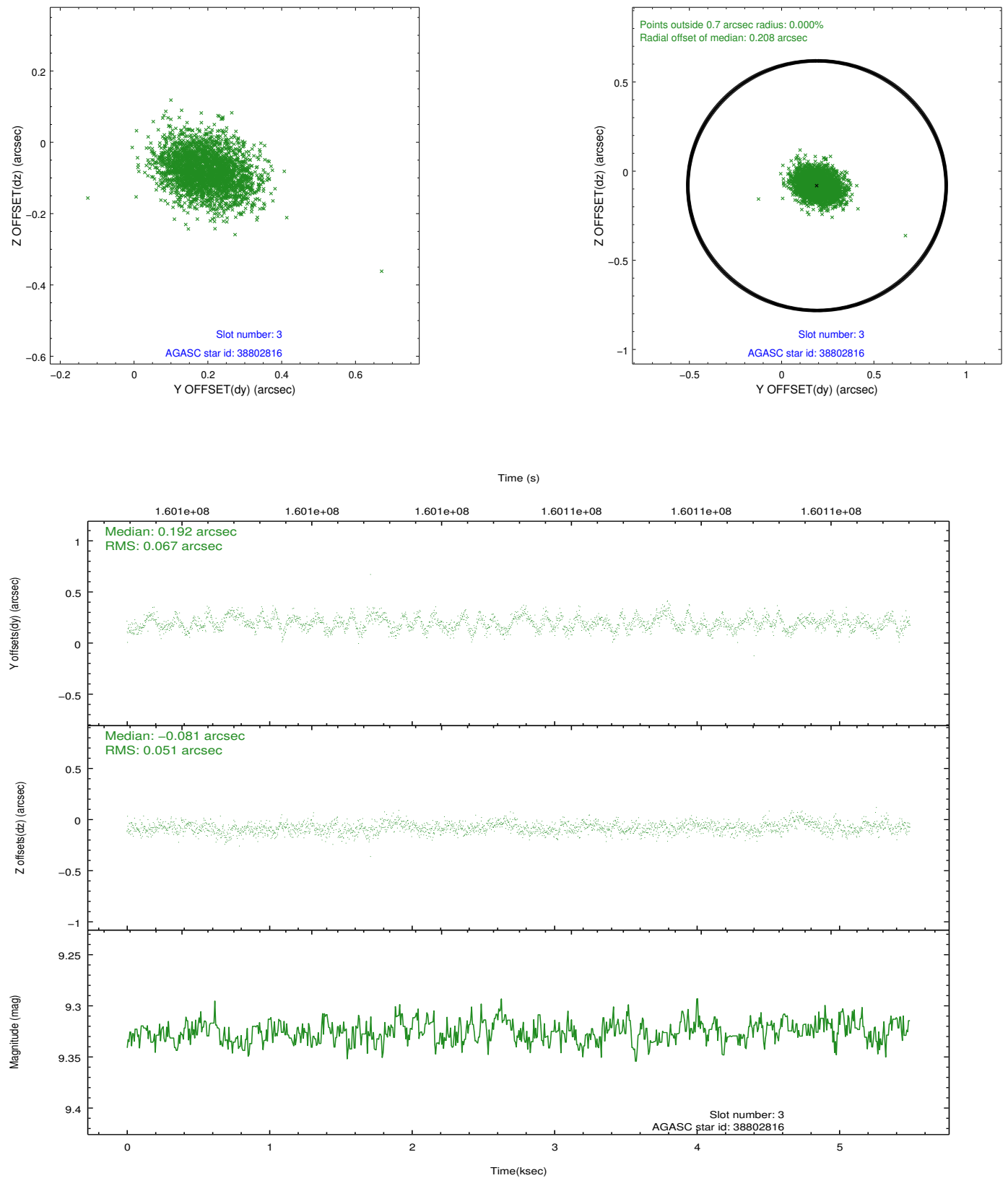


### Slot Statistics

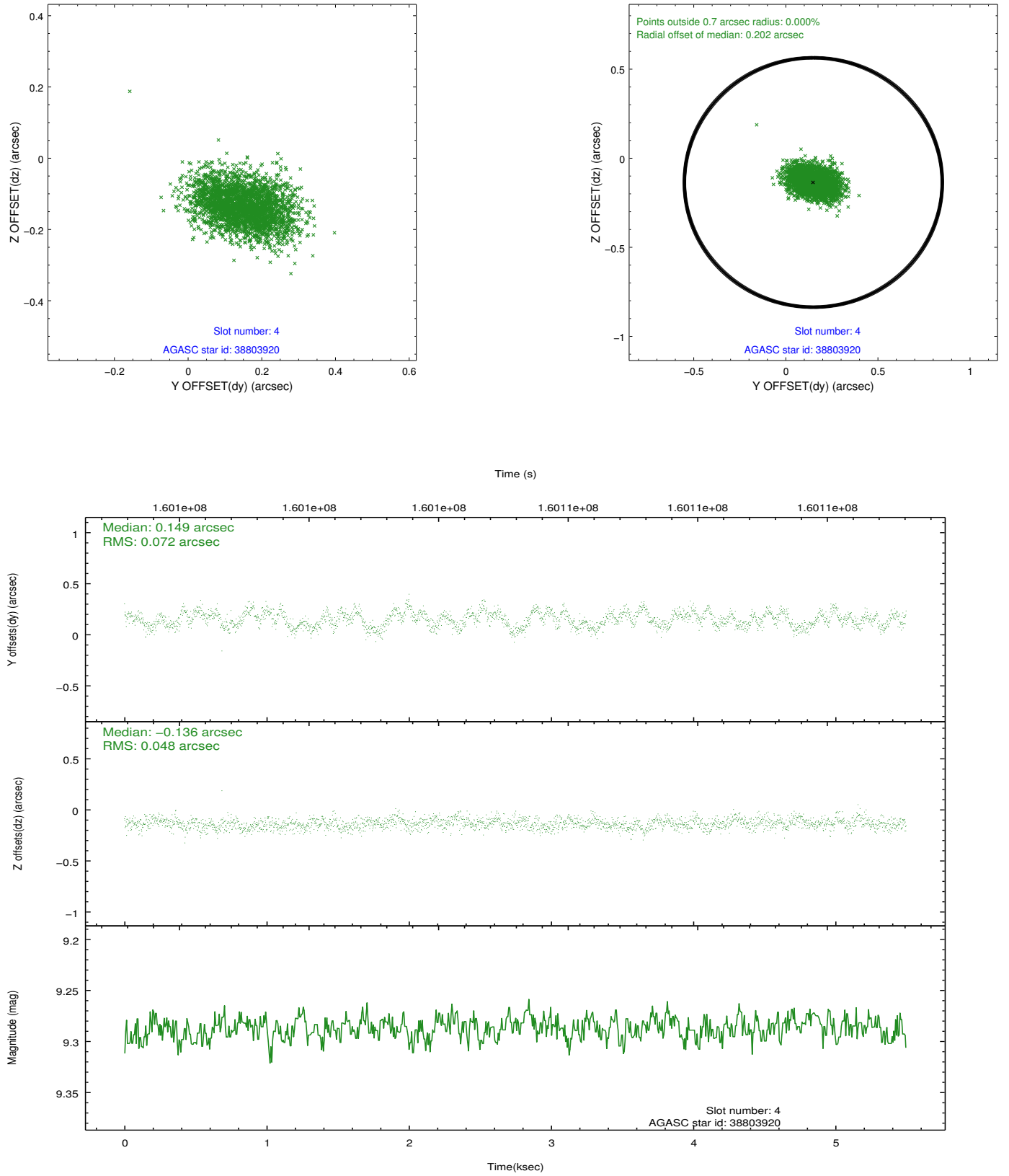
slot	status	id	mag	n_pts	med_dy	med_dz	dr1	dr2	ra	dec	mean_y	mean_z
0	FID	ACIS-S-2	7.12	1341	-0.042	-0.002	0.006	0.011	0.000000	0.000000	-755.84	-1727.39
1	FID	ACIS-S-4	7.21	1341	0.030	0.021	0.005	0.010	0.000000	0.000000	2156.97	180.05
2	FID	ACIS-S-5	7.24	1341	-0.018	-0.010	0.007	0.011	0.000000	0.000000	-1807.30	174.84
3	GUIDE	38802816	9.33	2677	0.192	-0.081	0.088	0.145	192.059766	5.035935	-1368.19	1220.32
4	GUIDE	38803920	9.29	2681	0.149	-0.136	0.091	0.150	192.044549	5.137411	-1038.10	1385.54
5	GUIDE	38931728	9.77	2681	-0.172	0.022	0.098	0.160	192.555802	5.859765	2001.20	447.17
6	GUIDE	38935840	8.92	2681	-0.335	-0.081	0.079	0.127	192.583166	5.936459	2295.03	439.00
7	GUIDE	38537216	10.15	2681	0.166	0.276	0.150	0.245	192.937452	4.941060	-718.24	-1877.99

## 2.4 Star Slots

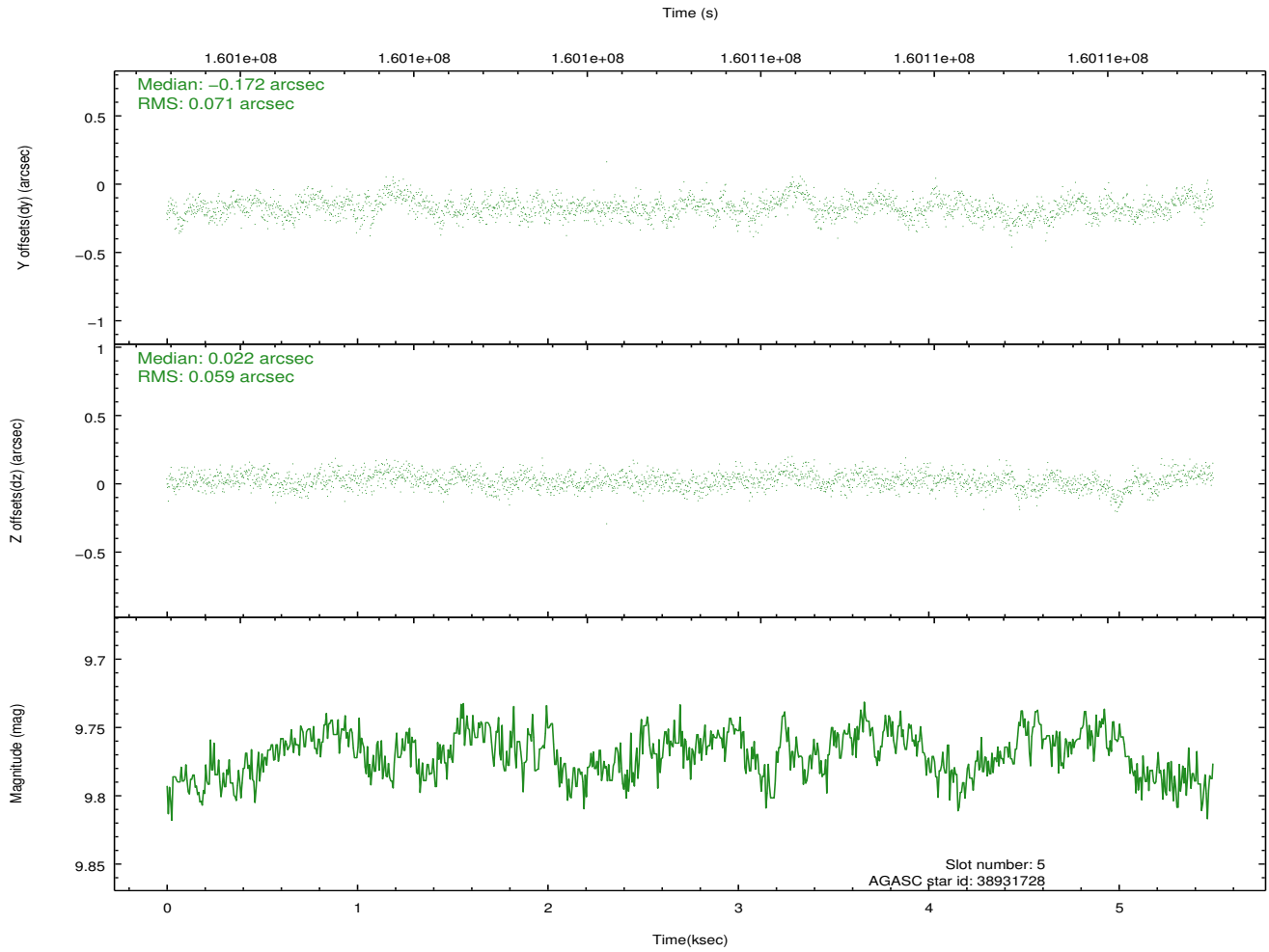
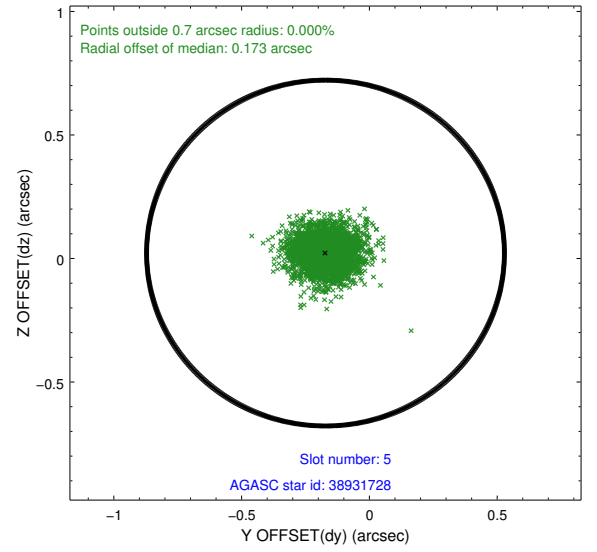
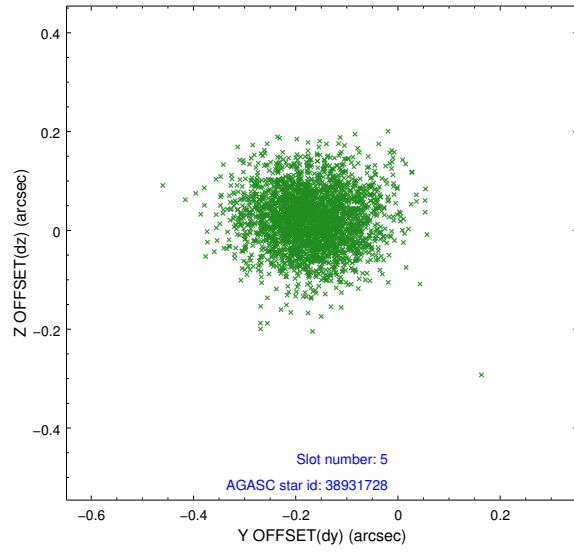
### 2.4.1 Slot 3



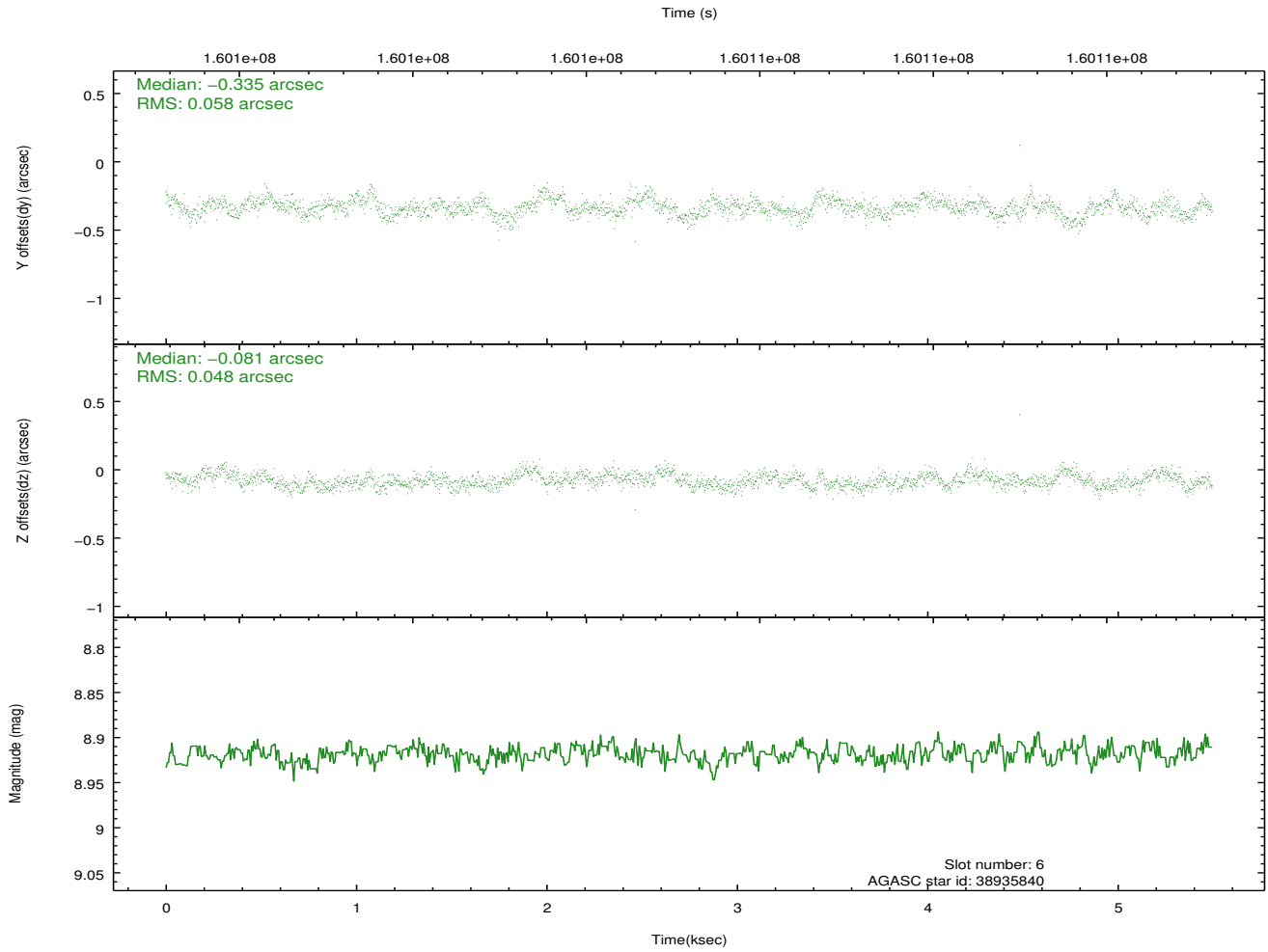
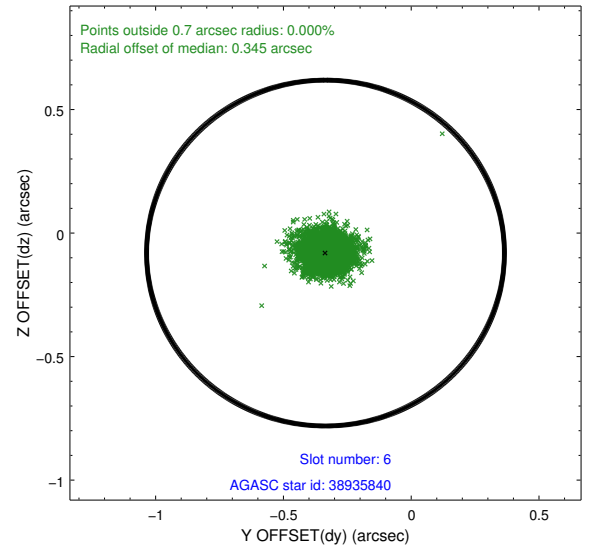
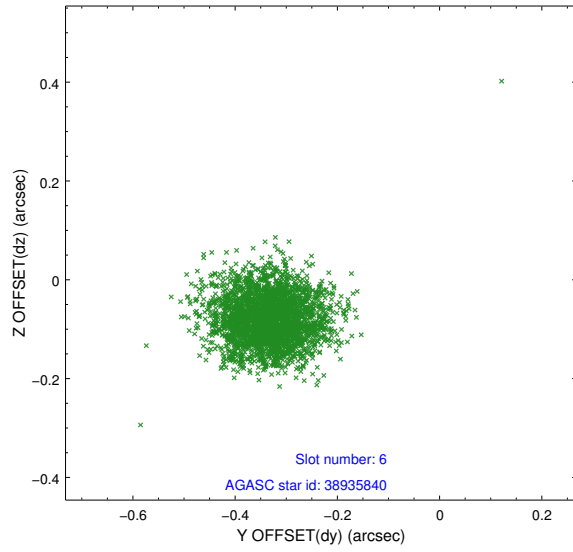
## 2.4.2 Slot 4



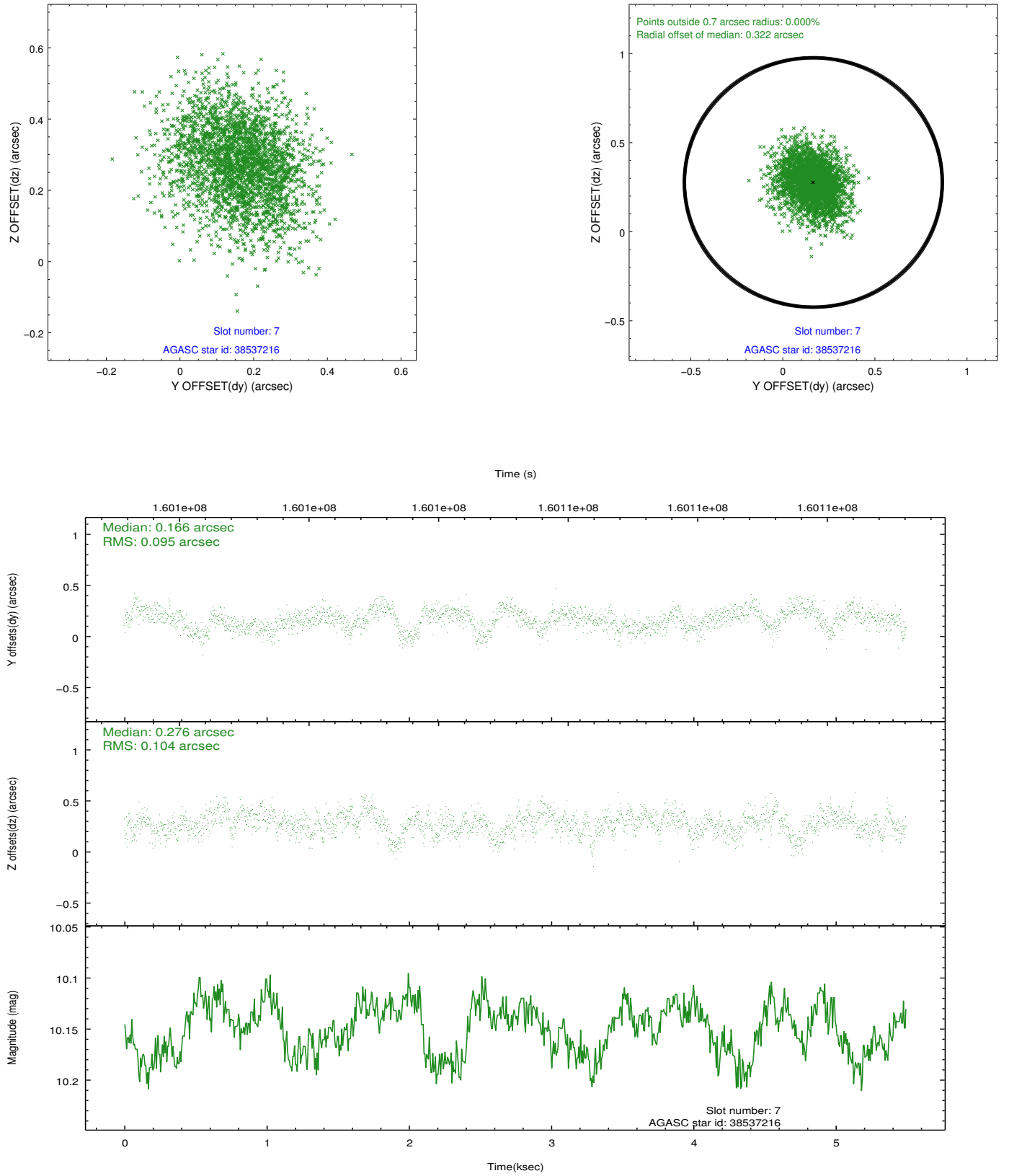
### 2.4.3 Slot 5



## 2.4.4 Slot 6

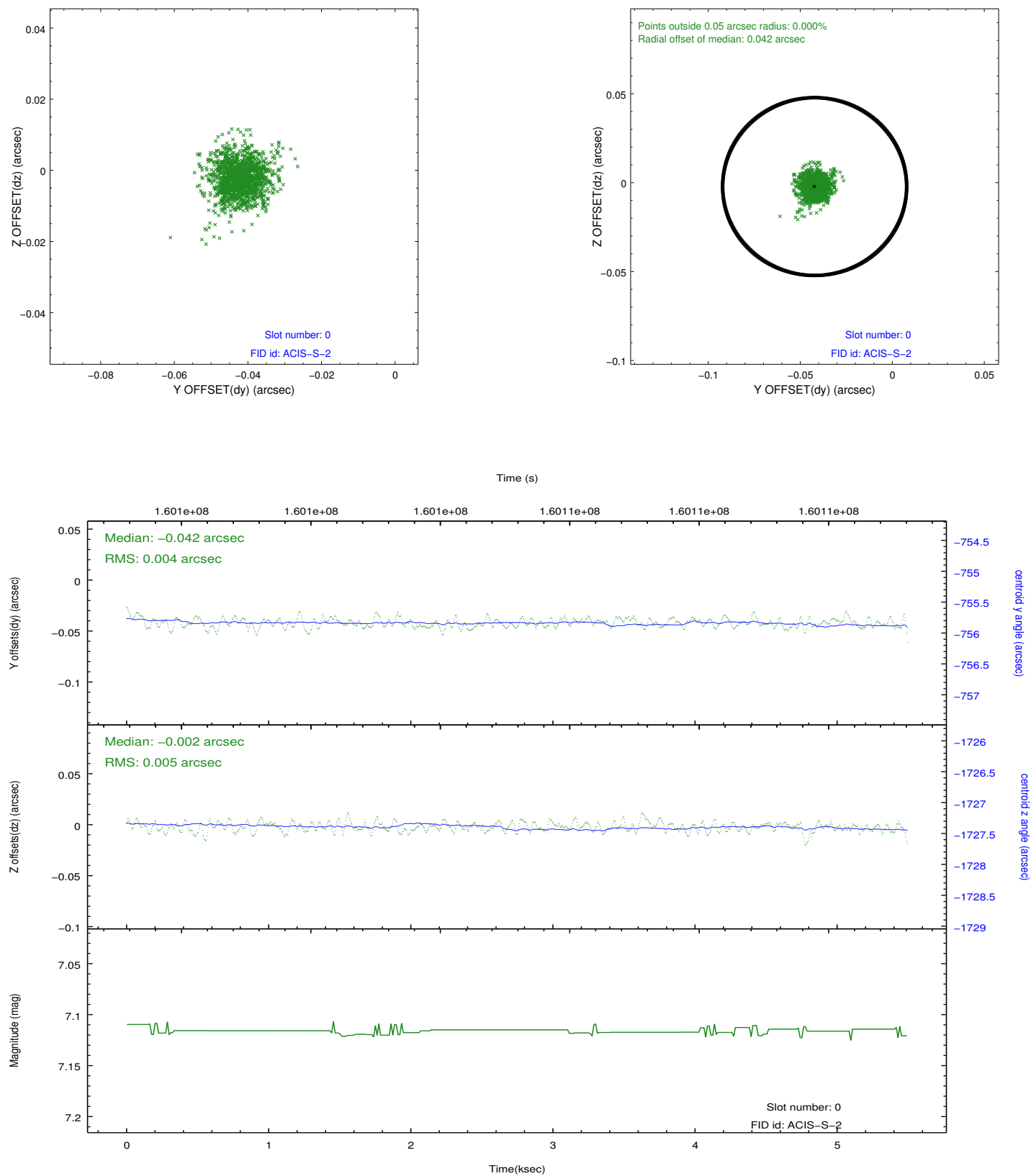


## 2.4.5 Slot 7

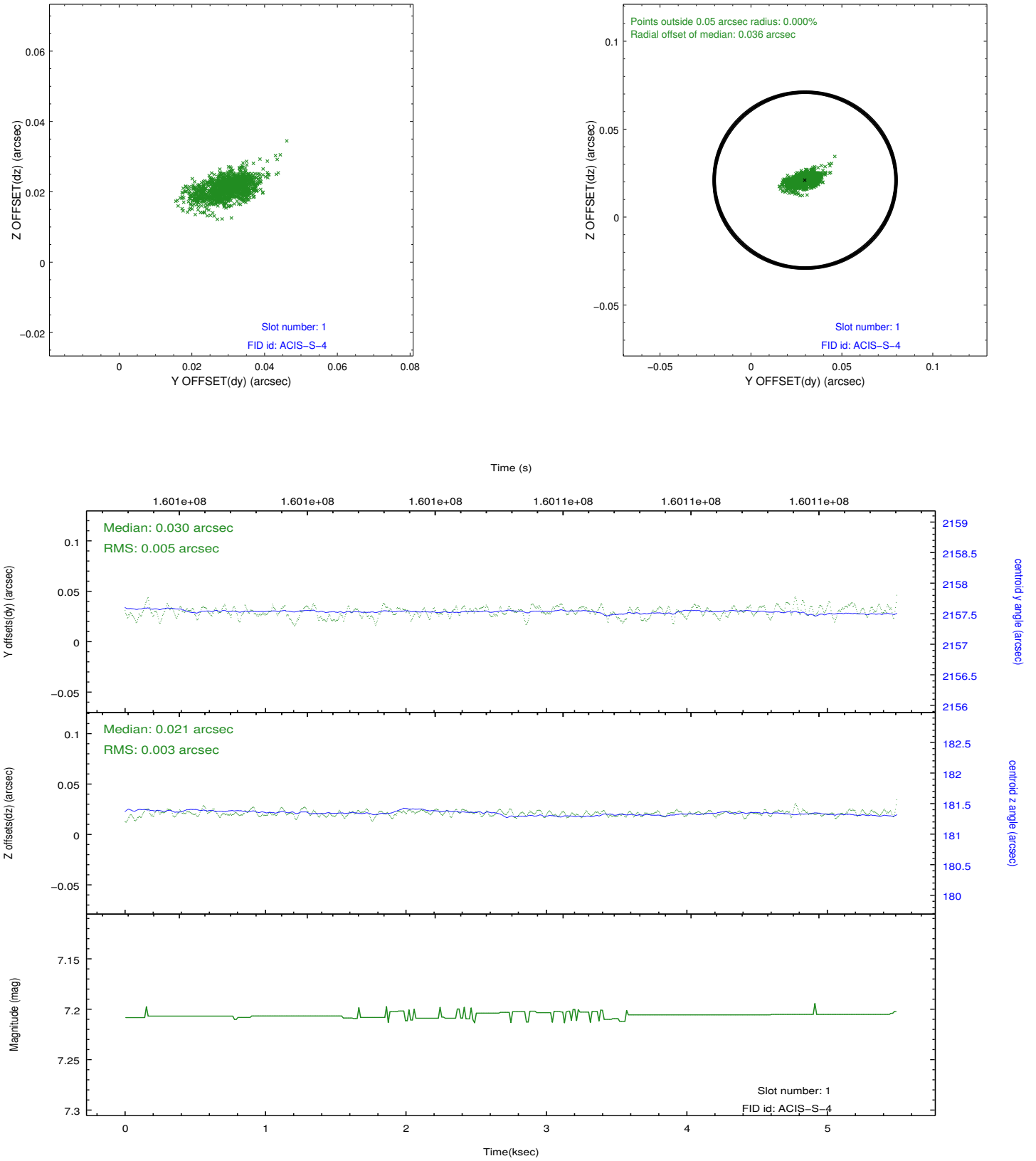


## 2.5 FID Slots

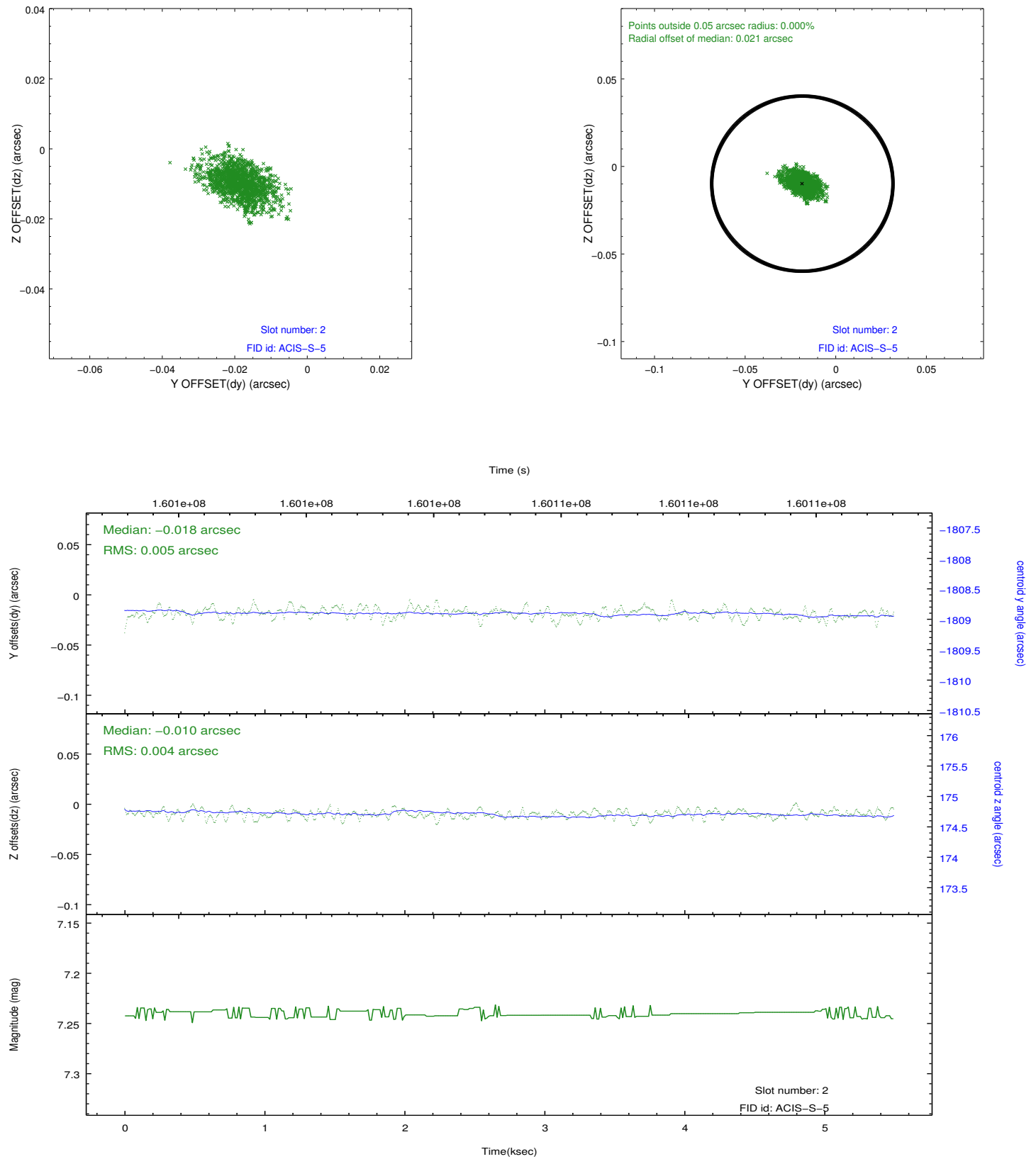
### 2.5.1 Slot 0



## 2.5.2 Slot 1



### 2.5.3 Slot 2



## A Summary

### A.1 Status

V&V Scientist	Jen Lauer
V&V Date (YYYY-MM-DD)	2012.11.01
V&V Edition	1
V&V Disposition and Status	OK
V&V Charge Time	4.966

### A.2 Comments