

V&V Reference Report

L2 ASCDS Version : 7.6.8

Observation 4019 - L2 Version 001
Chandra X-Ray Center

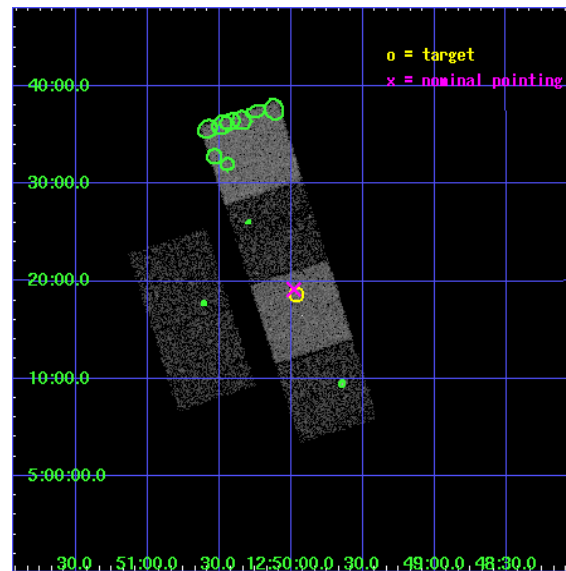
L2 Processing Date : Jul 19 2006

Contents

1	Front	2
2	OBI	3
2.1	OBI	3
2.1.1	Images	3
2.1.2	Bias	3
2.1.3	Parameters	4
2.1.4	Events	4
2.2	Compared Parameters	5
2.3	Aspect	6
2.4	Star Slots	9
2.4.1	Slot 3	9
2.4.2	Slot 4	10
2.4.3	Slot 5	11
2.4.4	Slot 6	12
2.4.5	Slot 7	13
2.5	FID Slots	14
2.5.1	Slot 0	14
2.5.2	Slot 1	15
2.5.3	Slot 2	16
3	Point Sources	17
A	Summary	18
A.1	Status	18
A.2	Comments	18

1 Front

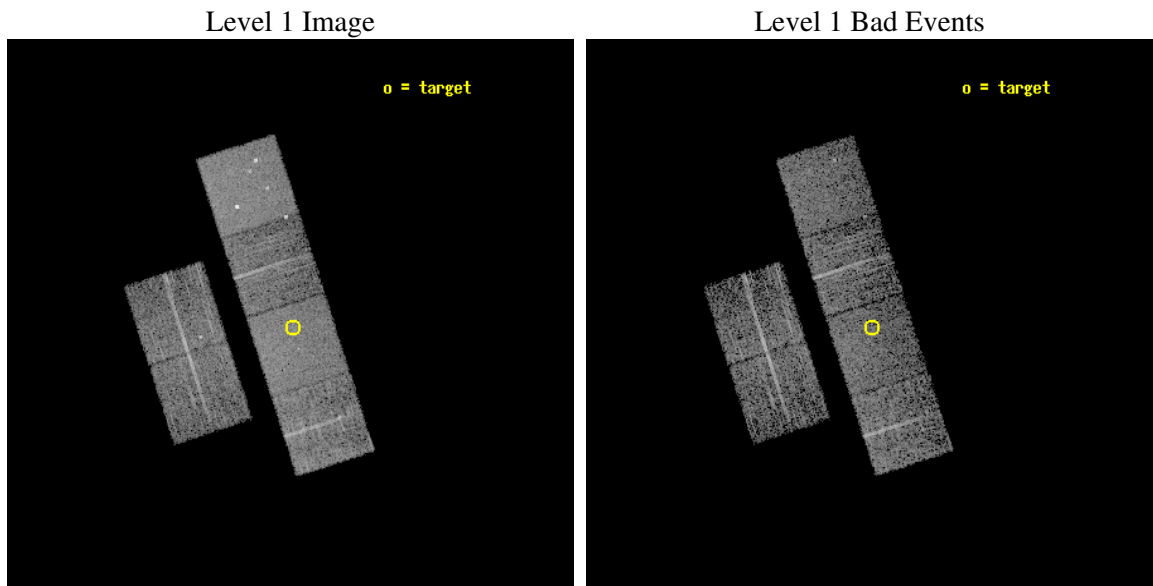
seq_num	700698
obs_id	4019
title	A CHANDRA SURVEY OF INFRARED-BRIGHT LINER GALAXIES
observer	Dr. Shobita Satyapal
object	NGC4713
dtcycle	0
cycle	P
ra_targ	192.490833
dec_targ	5.310833
ra_nom	192.49529450745
dec_nom	5.3192463487502
roll_nom	72.138355690937
revision	2
ontime	4963.1999815106
livetime	4900.3529548645
ontime2	4963.1999815106
ontime3	4963.1999815106
ontime5	4963.1999815106
ontime6	4963.1999815106
ontime7	4963.1999815106
ontime8	4963.1999815106
l2events	46108



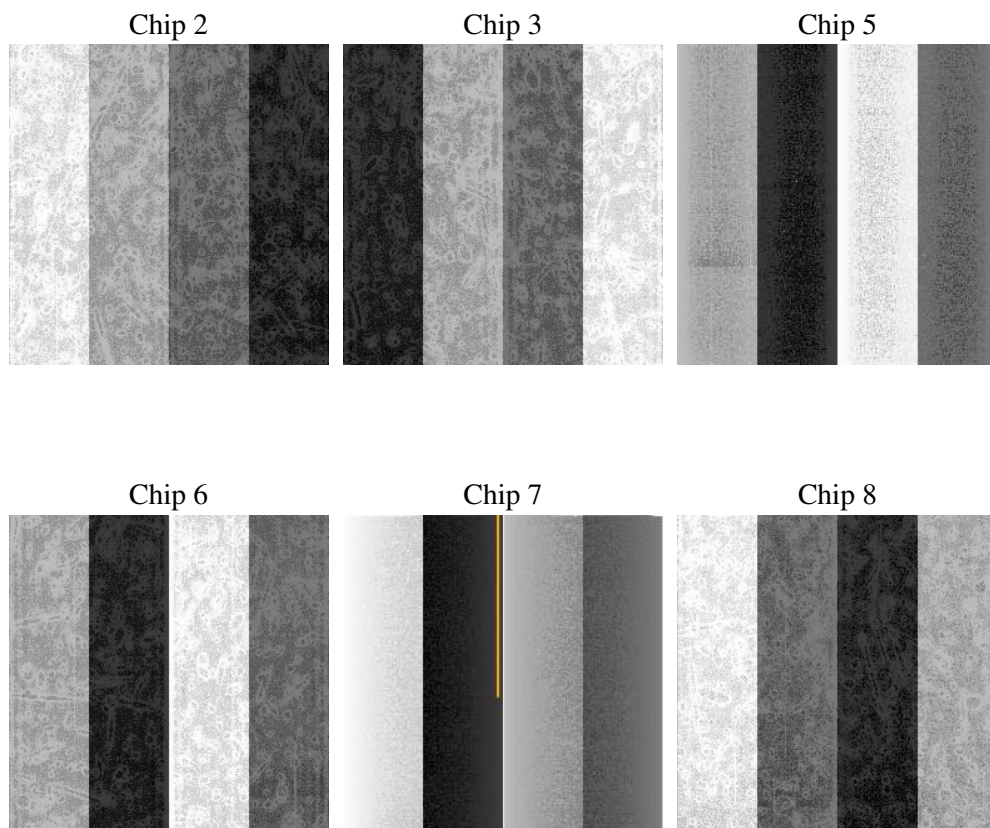
2 OBI

2.1 OBI

2.1.1 Images



2.1.2 Bias



2.1.3 Parameters

obi_num	0
ascdsver	7.6.8
caldsver	3.2.2
date	2006-07-19T15:01:22
revision	2

sched_exp_time	5000.000000
ontime	4968.4633084536
ontime2	4968.4632885754
ontime3	4968.4632885754
ontime5	4968.4633084536
ontime6	4968.4633084536
ontime7	4968.4633084536
ontime8	4968.4633084536
l1events	212102

2.1.4 Events

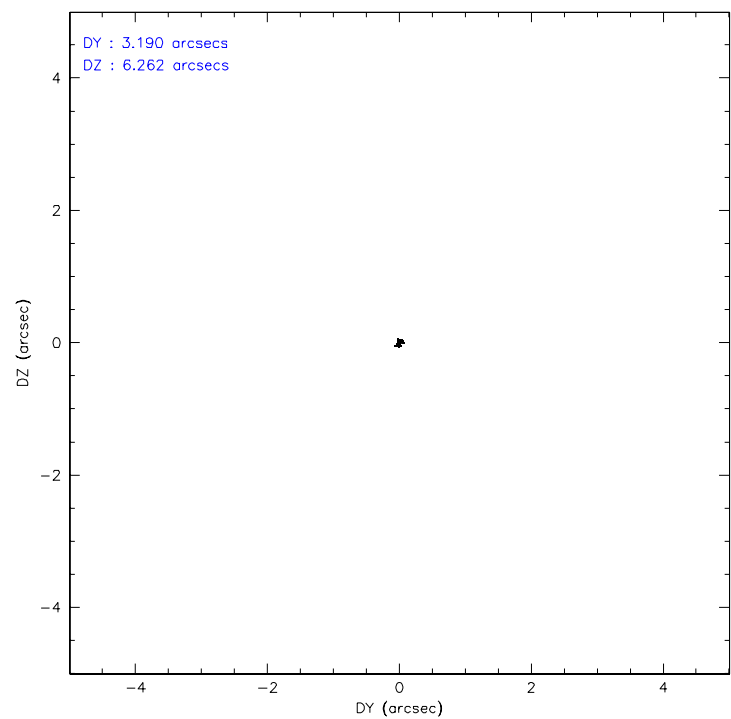
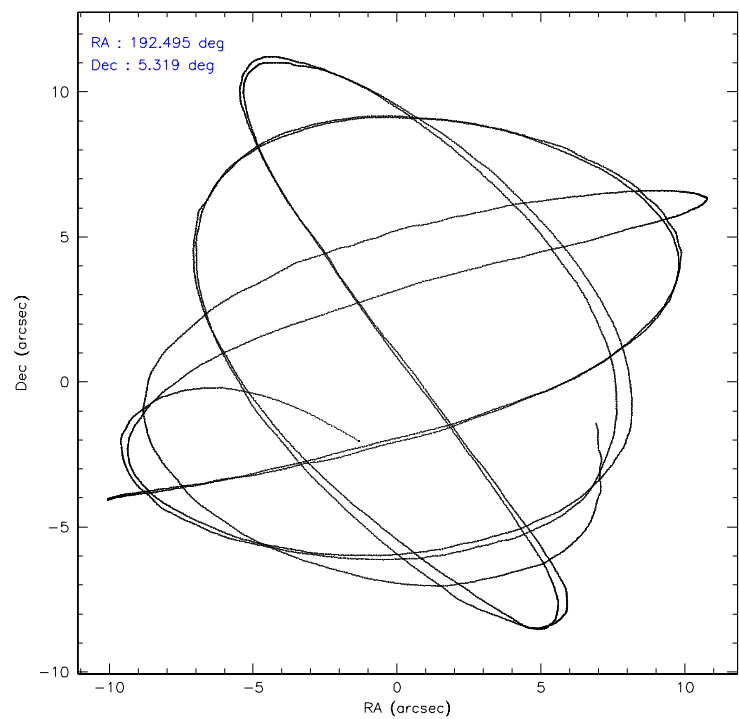
	ccd 2	ccd 3	ccd 5	ccd 6	ccd 7	ccd 8
level 1 events	30881	28689	46280	29389	39470	37393
rejected events	27135	25220	24922	25720	24228	29023
rejected %	87%	87%	53%	87%	61%	77%

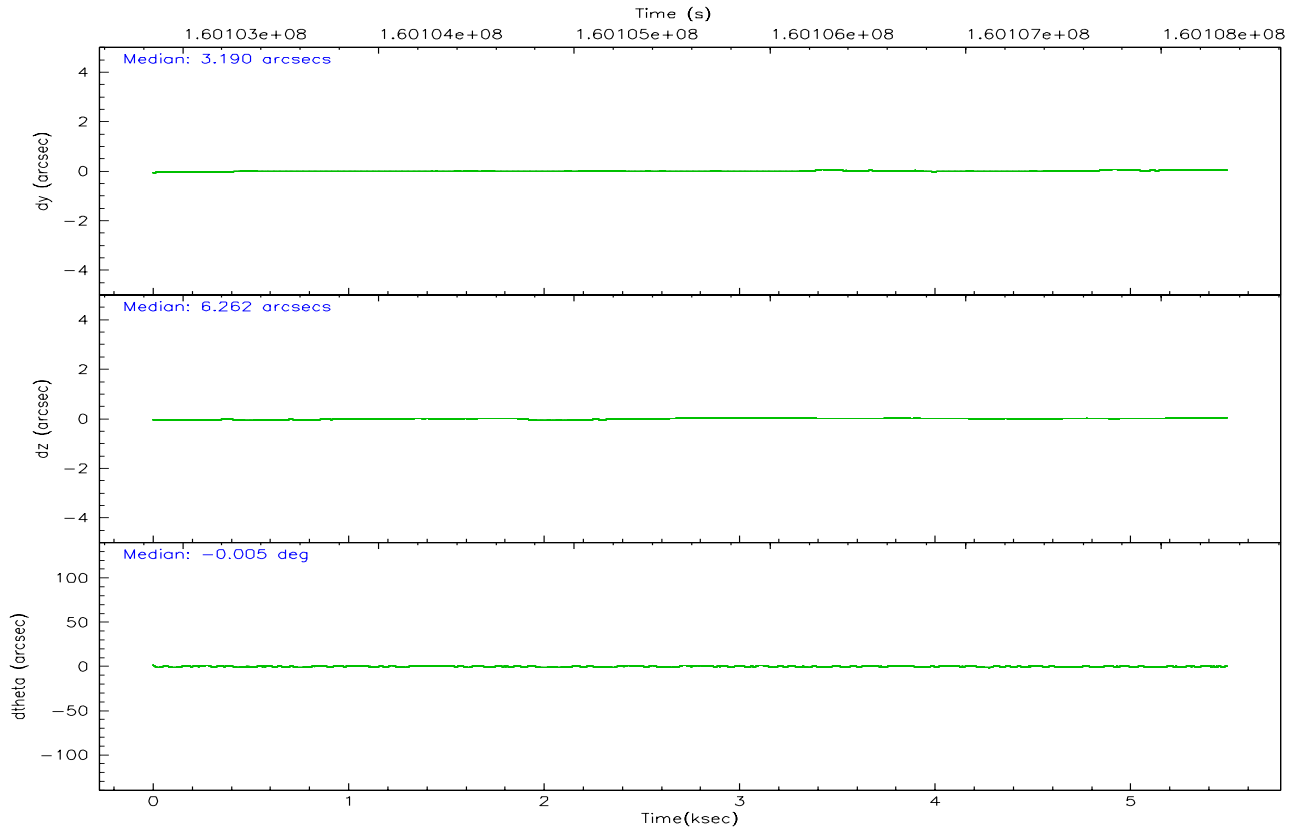
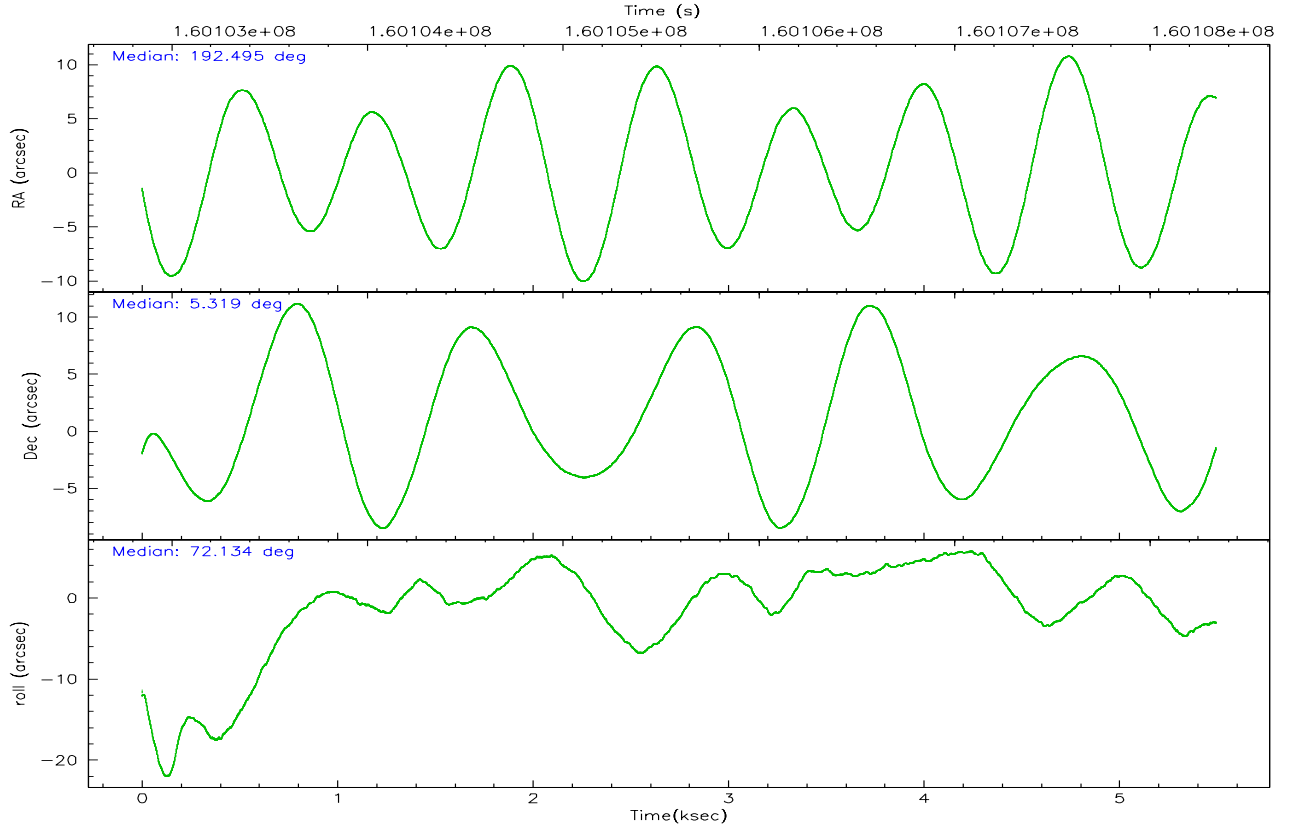
	ccd 2	ccd 3	ccd 5	ccd 6	ccd 7	ccd 8
grade 0 events	1770	1518	2887	1498	1065	2764
	5%	5%	6%	5%	2%	7%
grade 1 events	21	11	123	17	40	26
	0%	0%	0%	0%	0%	0%
grade 2 events	713	692	6550	738	3879	1858
	2%	2%	14%	2%	9%	4%
grade 3 events	353	357	463	347	765	841
	1%	1%	1%	1%	1%	2%
grade 4 events	316	325	409	367	706	797
	1%	1%	0%	1%	1%	2%
grade 5 events	1128	1285	2091	1305	2535	1689
	3%	4%	4%	4%	6%	4%
grade 6 events	601	586	11073	721	8844	2129
	1%	2%	23%	2%	22%	5%
grade 7 events	25979	23915	22684	24396	21636	27289
	84%	83%	49%	83%	54%	72%

2.2 Compared Parameters

Parameter	Planned	Actual	Parameter	Planned	Actual
Instrument	ACIS	ACIS	Obspar format version number	6	6
Detector	ACIS-235678	ACIS-235678	Obspar file type	PREDICTED	ACTUAL
Grating	NONE	NONE	Obspar update status	NONE	UPDATED
Data mode	FAINT	FAINT	On-chip summing requested	N	N
Observation mode	POINTING	POINTING	Subarray requested	NONE	NONE
Pointing RA	192.501500	192.4952945074482	Alternating exposures requested	N	N
Pointing Dec	5.292838	5.319246348750189	Primary exposure time	0.000000	3.2
Pointing Roll	71.981130	72.13835569093656			
SIM focus pos (mm)	-0.684267	-0.6828225247311905			
SIM defocus (mm)	0	0.001444936568705701			
SIM translation stage pos (mm)	-190.132523	-190.1425803651734			
SIM translation stage offset (mm)	0	0.01005778216563158			
Observation start time	160103341.184000	160102224.05253			
Observation start date	2003-01-28T01:07:57	2003-01-28T00:50:24			
Observation end time	160108341.184000	160108912.17781			
Observation end date	2003-01-28T02:31:17	2003-01-28T02:41:52			
Read mode	TIMED	TIMED			

2.3 Aspect



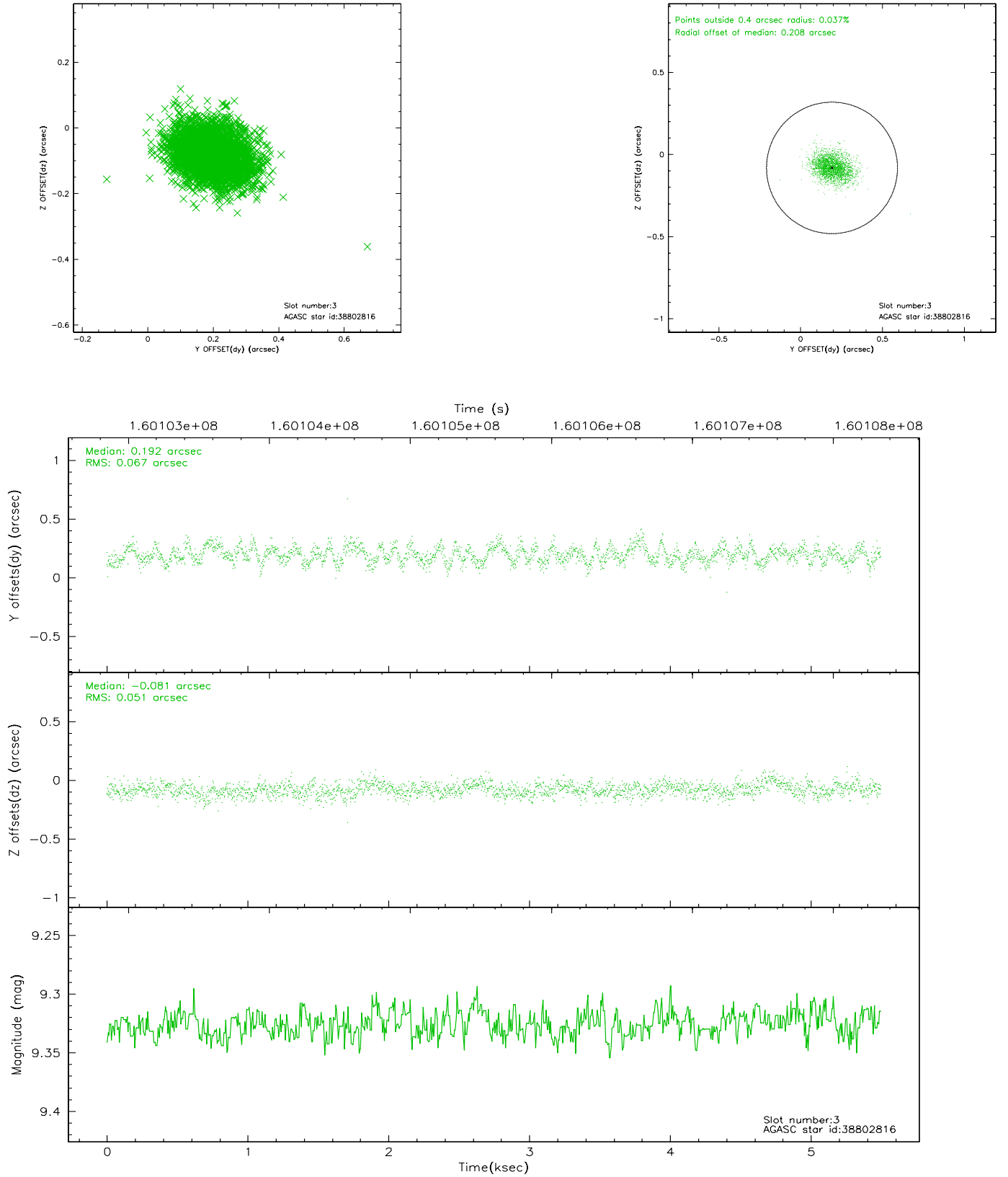


Slot Statistics

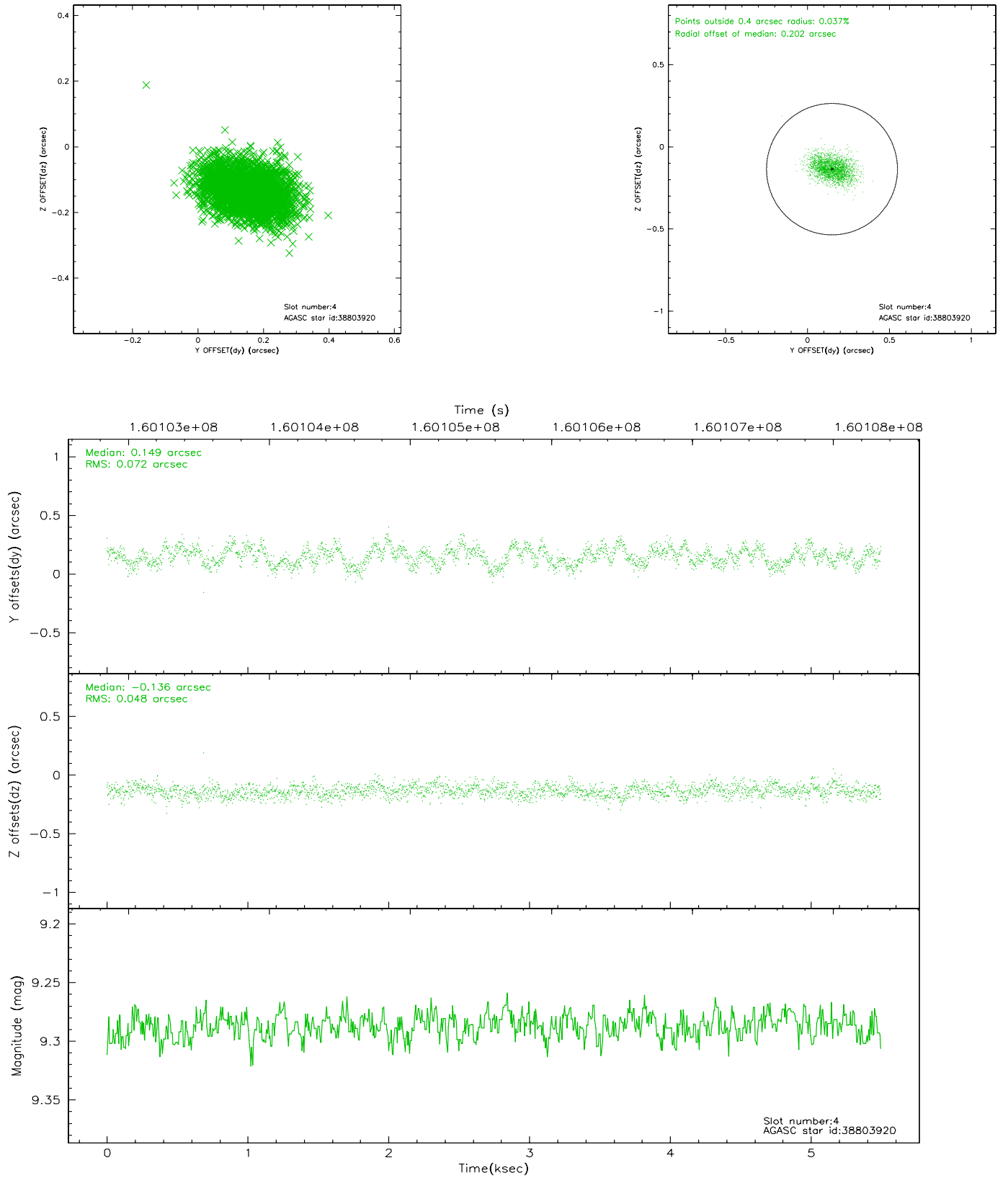
slot	status	id	mag	n_pts	med_dy	med_dz	dr1	dr2	ra	dec	mean_y	mean_z
0	FID	ACIS-S-2	7.12	1341	-0.031	0.021	0.006	0.011	0.000000	0.000000	-755.83	-1727.35
1	FID	ACIS-S-4	7.21	1341	-0.013	0.009	0.005	0.009	0.000000	0.000000	2156.93	180.06
2	FID	ACIS-S-5	7.24	1341	0.012	-0.021	0.006	0.011	0.000000	0.000000	-1807.27	174.85
3	GUIDE	38802816	9.33	2677	0.192	-0.081	0.088	0.145	192.059766	5.035935	-1368.19	1220.32
4	GUIDE	38803920	9.29	2681	0.149	-0.136	0.091	0.150	192.044549	5.137411	-1038.10	1385.54
5	GUIDE	38931728	9.77	2681	-0.172	0.022	0.098	0.160	192.555802	5.859765	2001.20	447.17
6	GUIDE	38935840	8.92	2681	-0.335	-0.081	0.079	0.127	192.583166	5.936459	2295.03	439.00
7	GUIDE	38537216	10.15	2681	0.166	0.276	0.150	0.245	192.937452	4.941060	-718.24	-1877.99

2.4 Star Slots

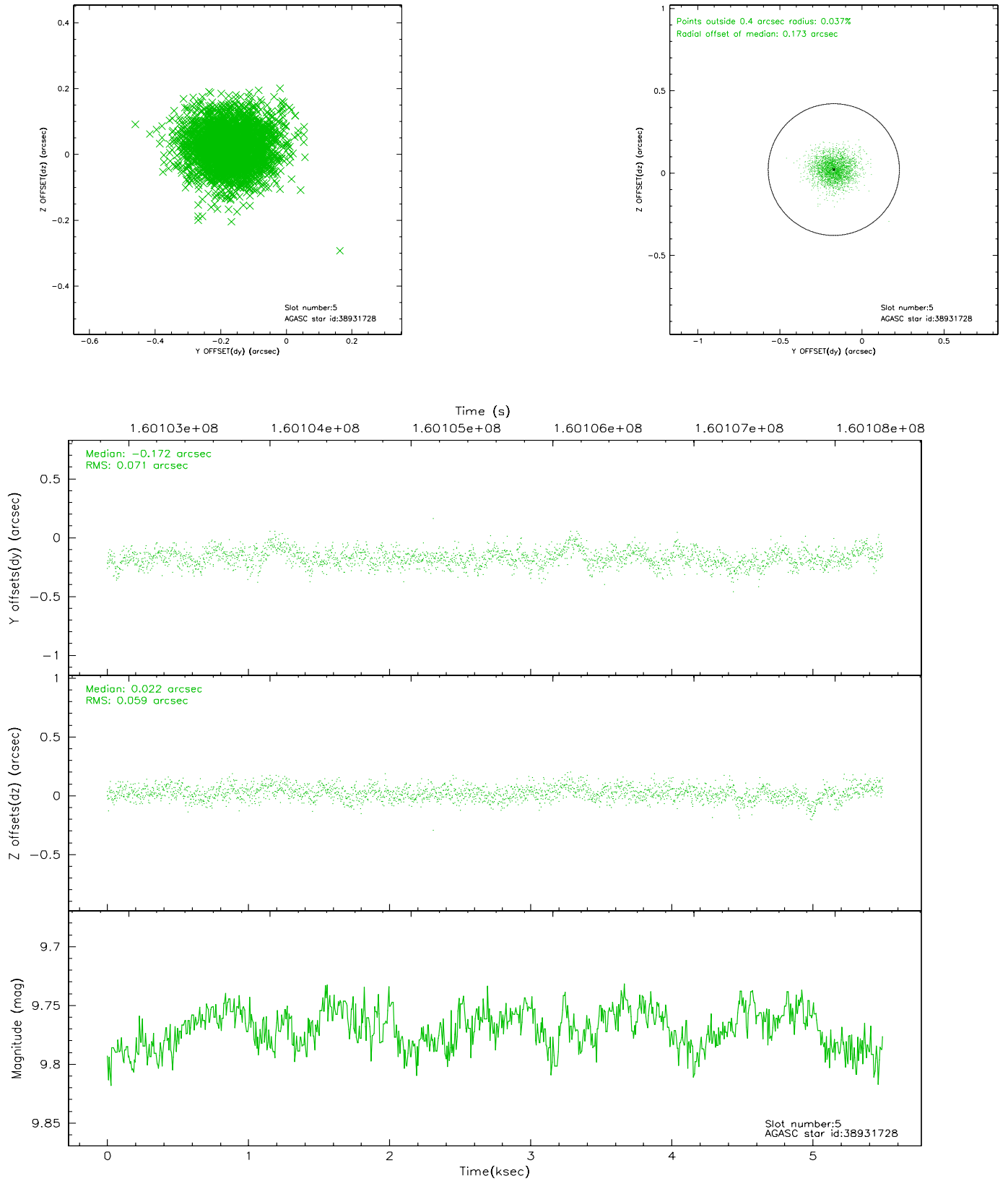
2.4.1 Slot 3



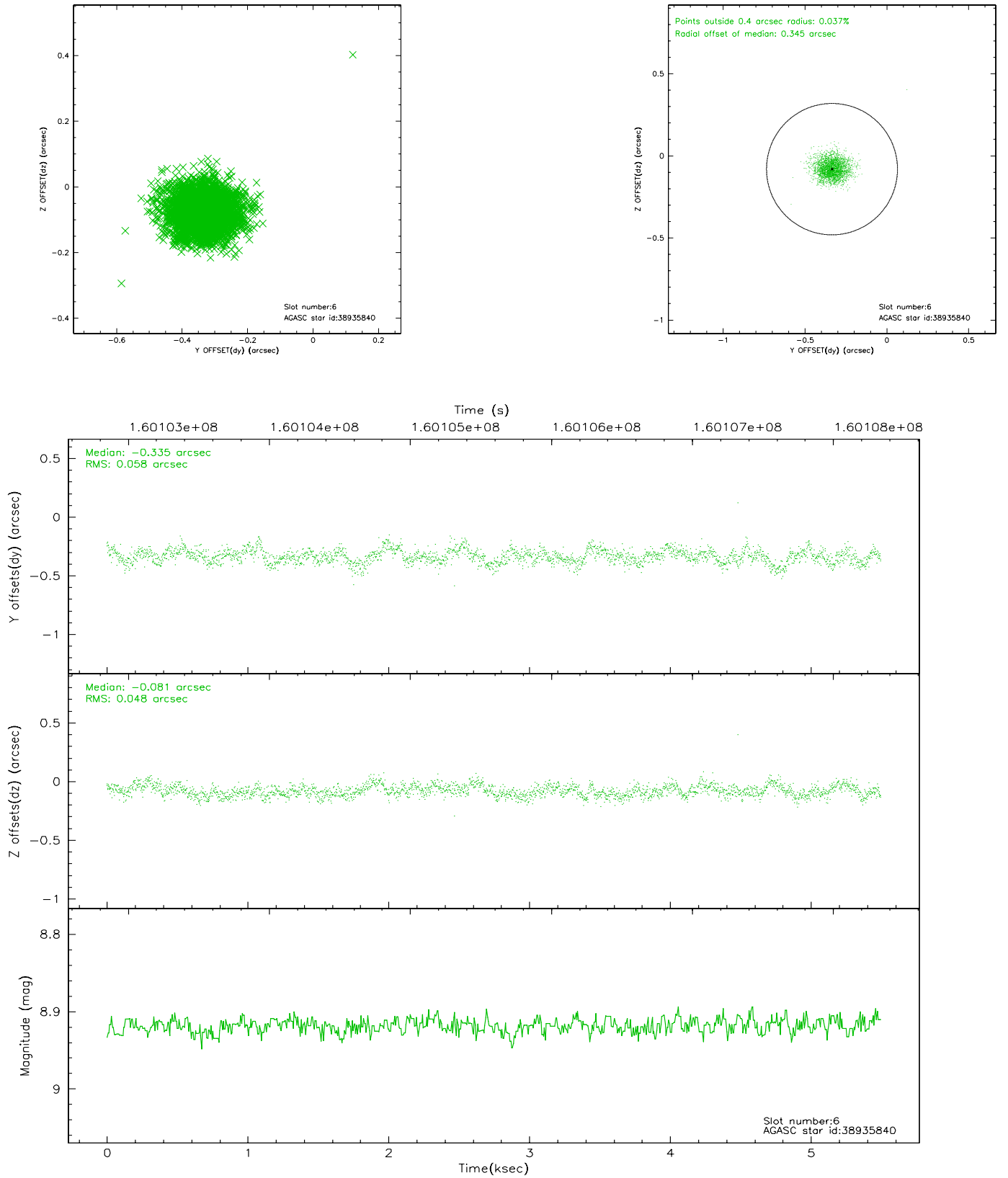
2.4.2 Slot 4



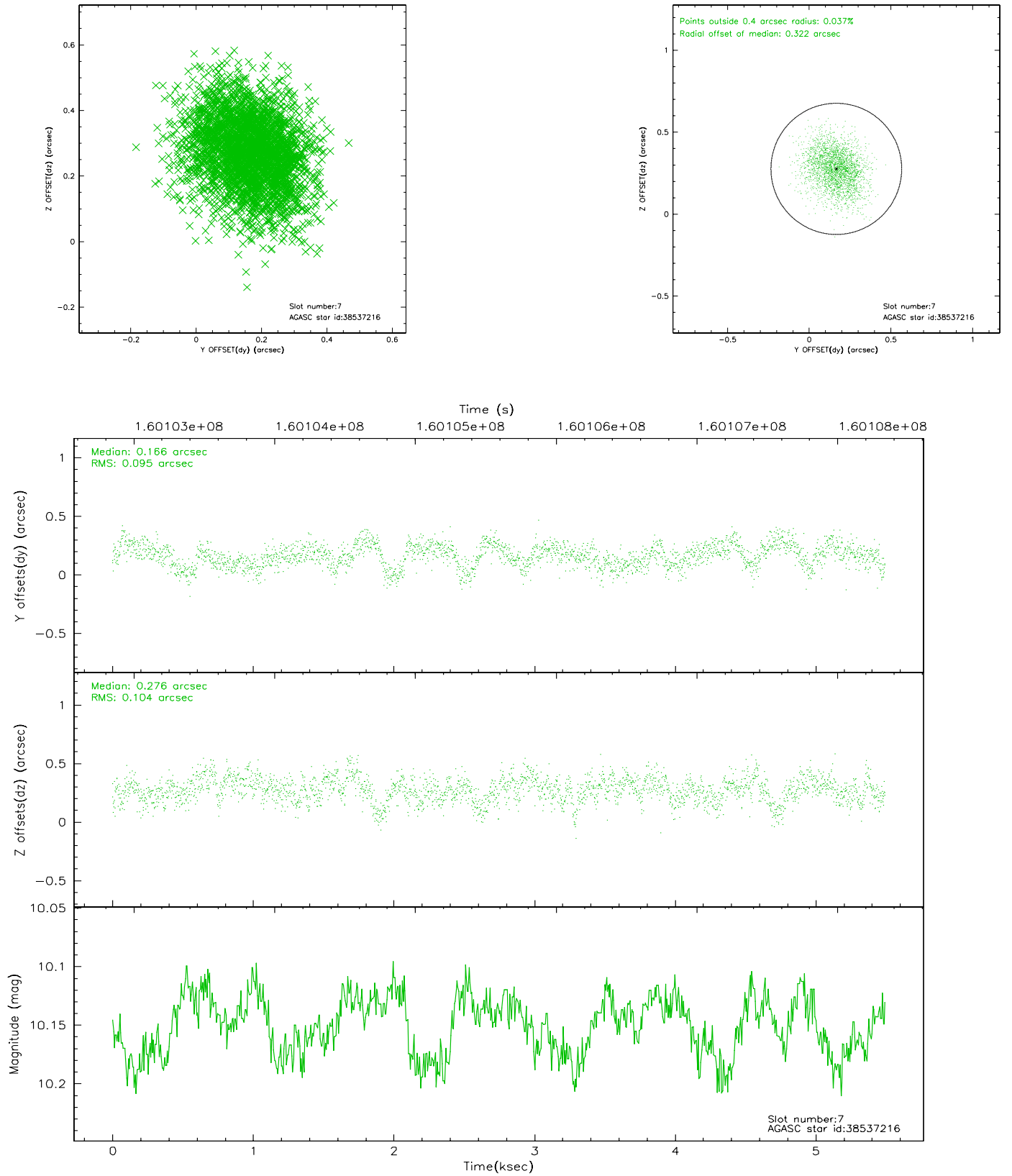
2.4.3 Slot 5



2.4.4 Slot 6

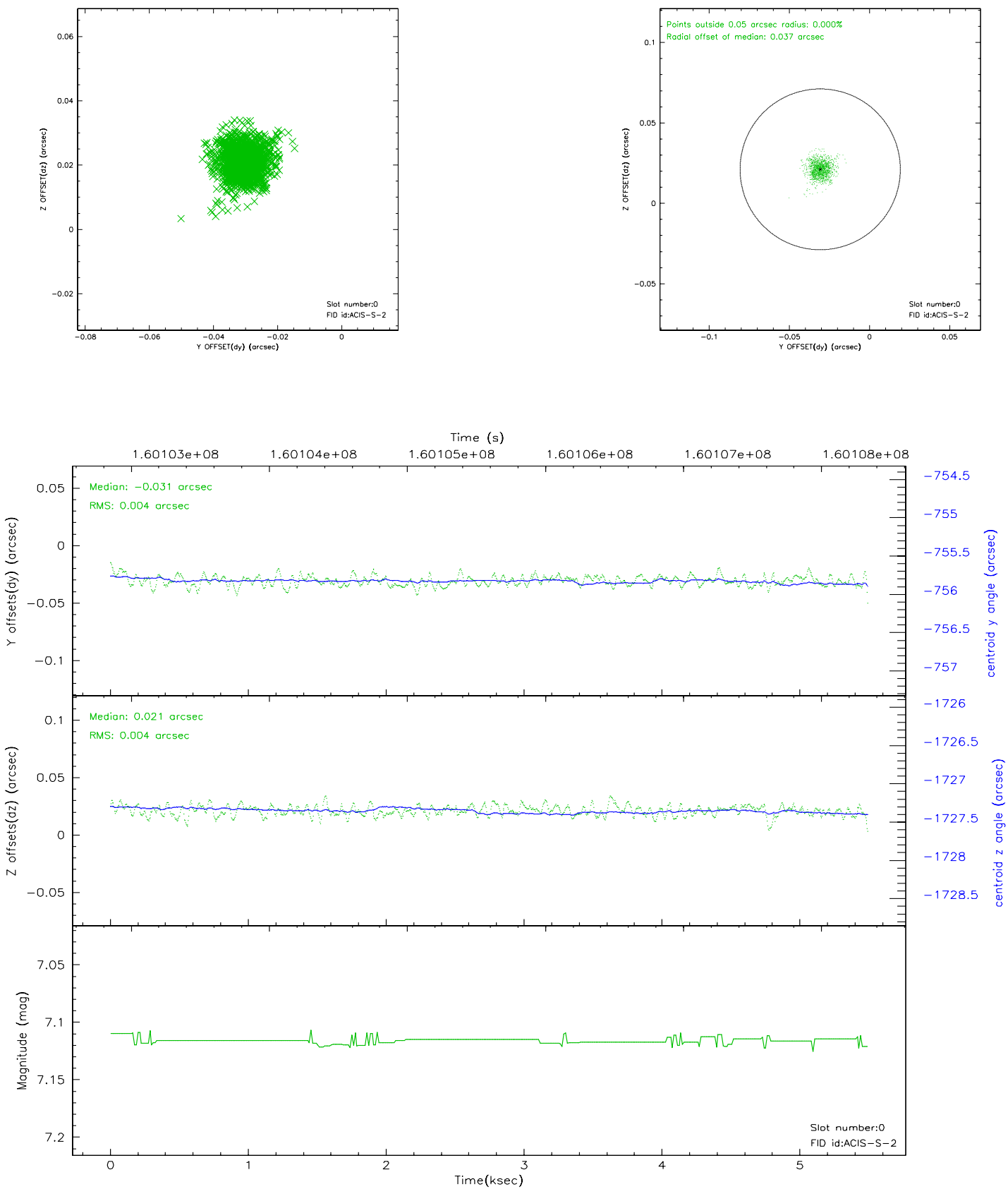


2.4.5 Slot 7

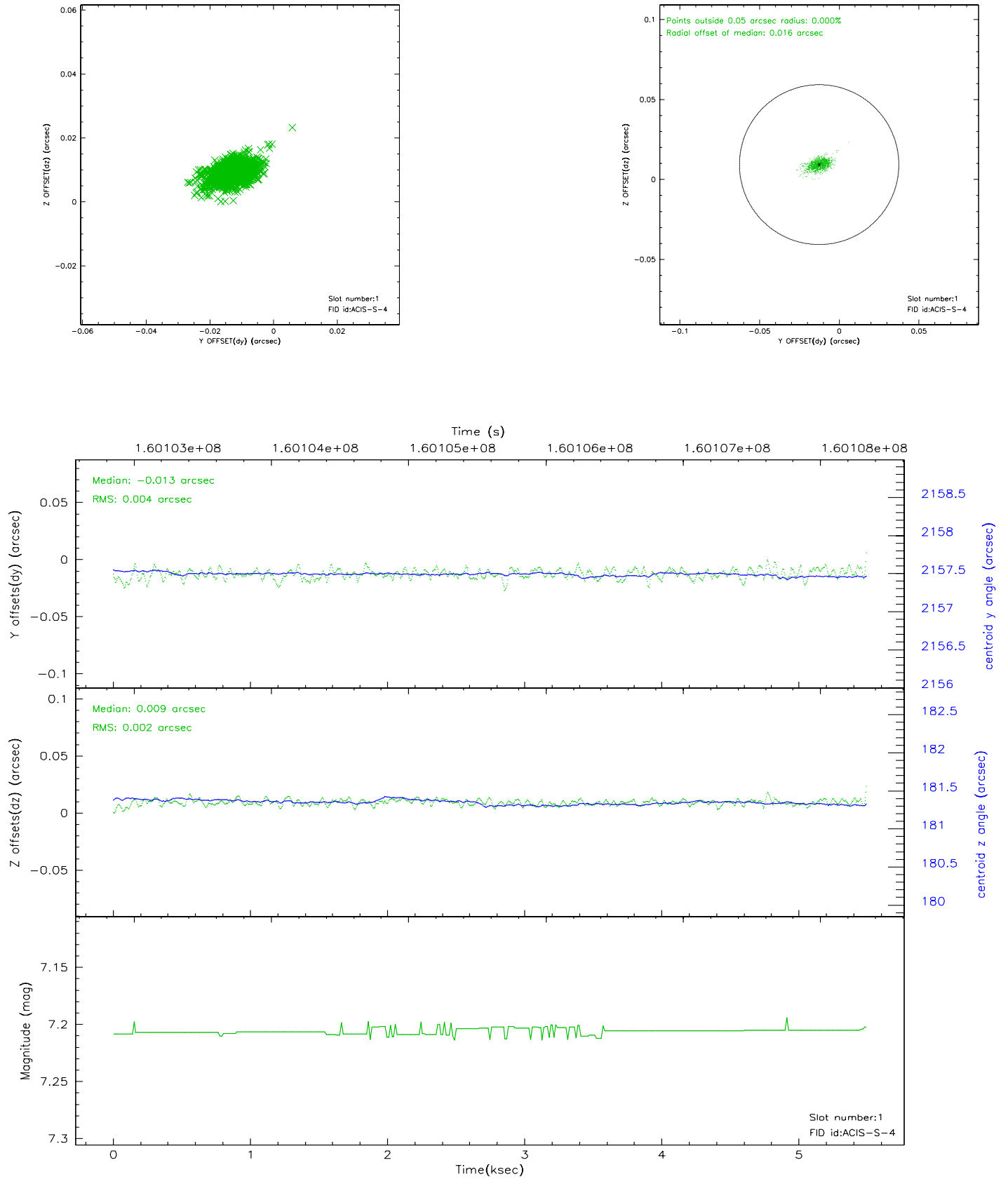


2.5 FID Slots

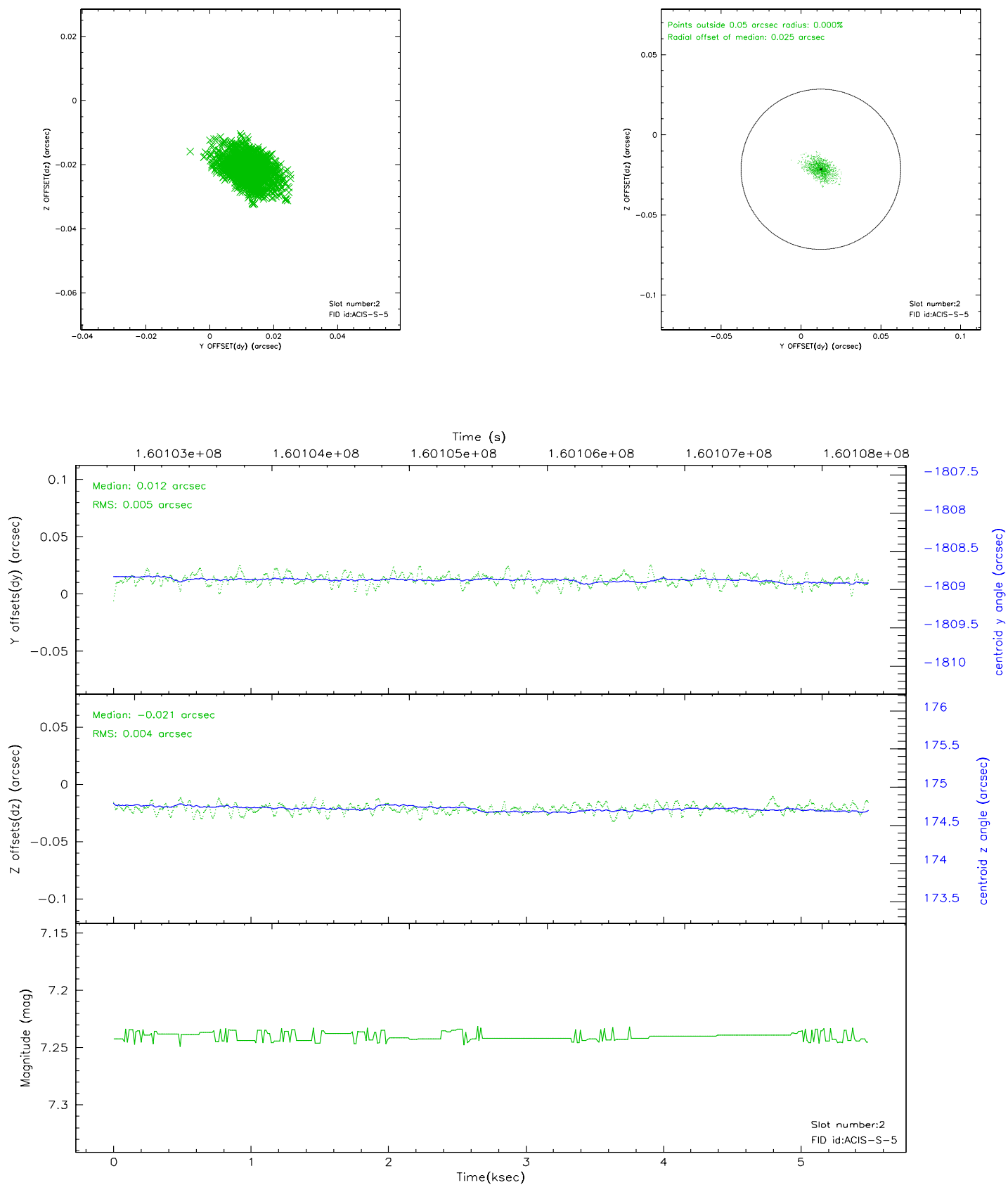
2.5.1 Slot 0



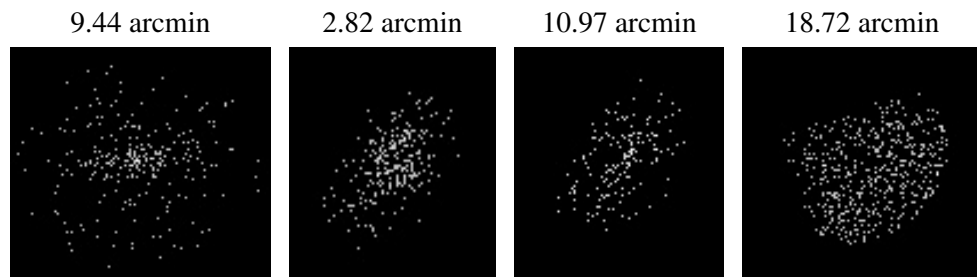
2.5.2 Slot 1



2.5.3 Slot 2



3 Point Sources



A Summary

A.1 Status

V&V Scientist	Beth Sundheim
V&V Date (YYYY-MM-DD)	2006.07.19
V&V Edition	1
V&V Disposition and Status	OK
V&V Charge Time	4.966

A.2 Comments