

# V&V Reference Report

## L2 ASCDS Version : 7.6.8

Observation 4018 - L2 Version 001  
Chandra X-Ray Center

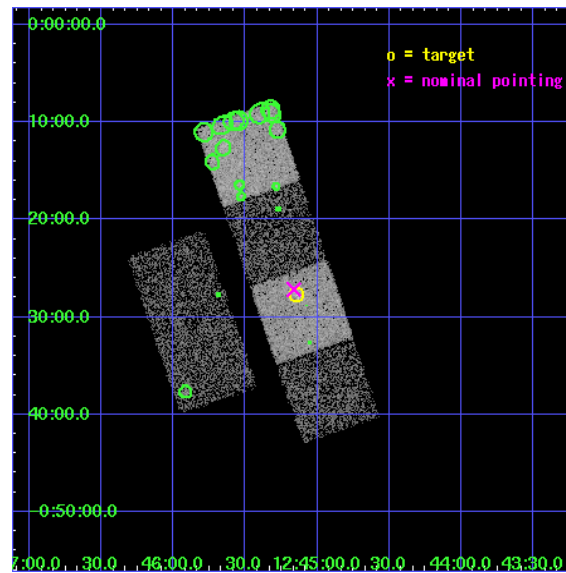
L2 Processing Date : Jul 27 2006

## Contents

<b>1</b>	<b>Front</b>	<b>2</b>
<b>2</b>	<b>OBI</b>	<b>3</b>
2.1	OBI . . . . .	3
2.1.1	Images . . . . .	3
2.1.2	Bias . . . . .	3
2.1.3	Parameters . . . . .	4
2.1.4	Events . . . . .	4
2.2	Compared Parameters . . . . .	5
2.3	Aspect . . . . .	6
2.4	Star Slots . . . . .	9
2.4.1	Slot 3 . . . . .	9
2.4.2	Slot 4 . . . . .	10
2.4.3	Slot 5 . . . . .	11
2.4.4	Slot 6 . . . . .	12
2.4.5	Slot 7 . . . . .	13
2.5	FID Slots . . . . .	14
2.5.1	Slot 0 . . . . .	14
2.5.2	Slot 1 . . . . .	15
2.5.3	Slot 2 . . . . .	16
<b>3</b>	<b>Point Sources</b>	<b>17</b>
<b>A</b>	<b>Summary</b>	<b>18</b>
A.1	Status . . . . .	18
A.2	Comments . . . . .	18

# 1 Front

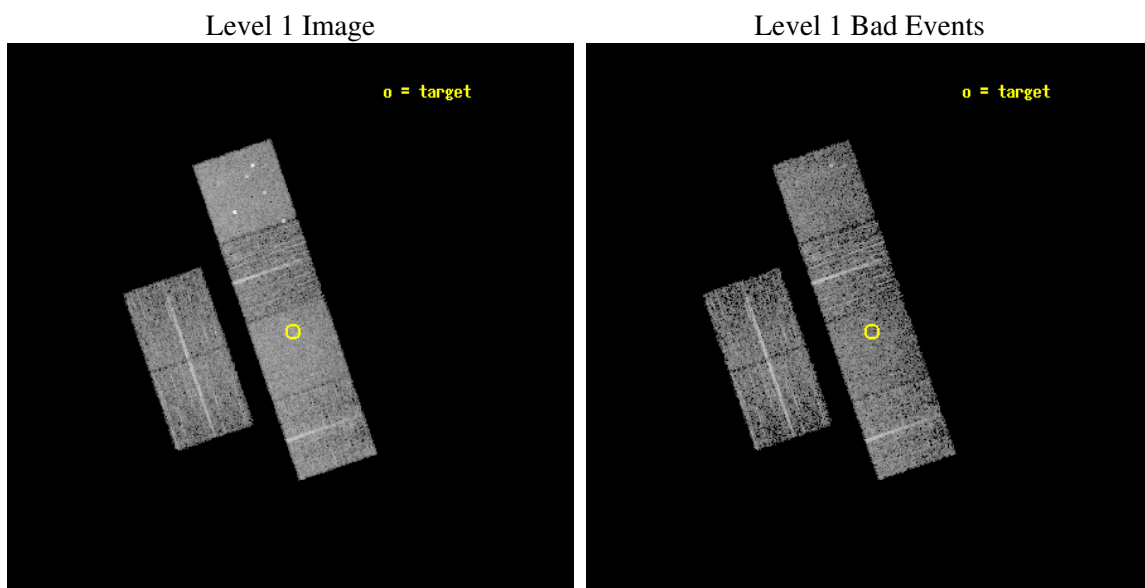
seq_num	700697
obs_id	4018
title	A CHANDRA SURVEY OF INFRARED-BRIGHT LINER GALAXIES
observer	Dr. Shobita Satyapal
object	NGC4666
dtcycle	0
cycle	P
ra_targ	191.28625
dec_targ	-0.461389
ra_nom	191.29084454586
dec_nom	-0.45298558583674
roll_nom	71.043229845894
revision	2
ontime	4998.3999813795
livetime	4935.1072311401
ontime2	4998.3999813795
ontime3	4998.3999813795
ontime5	4998.3999813795
ontime6	4998.3999813795
ontime7	4998.3999813795
ontime8	4998.3999813795
l2events	49425



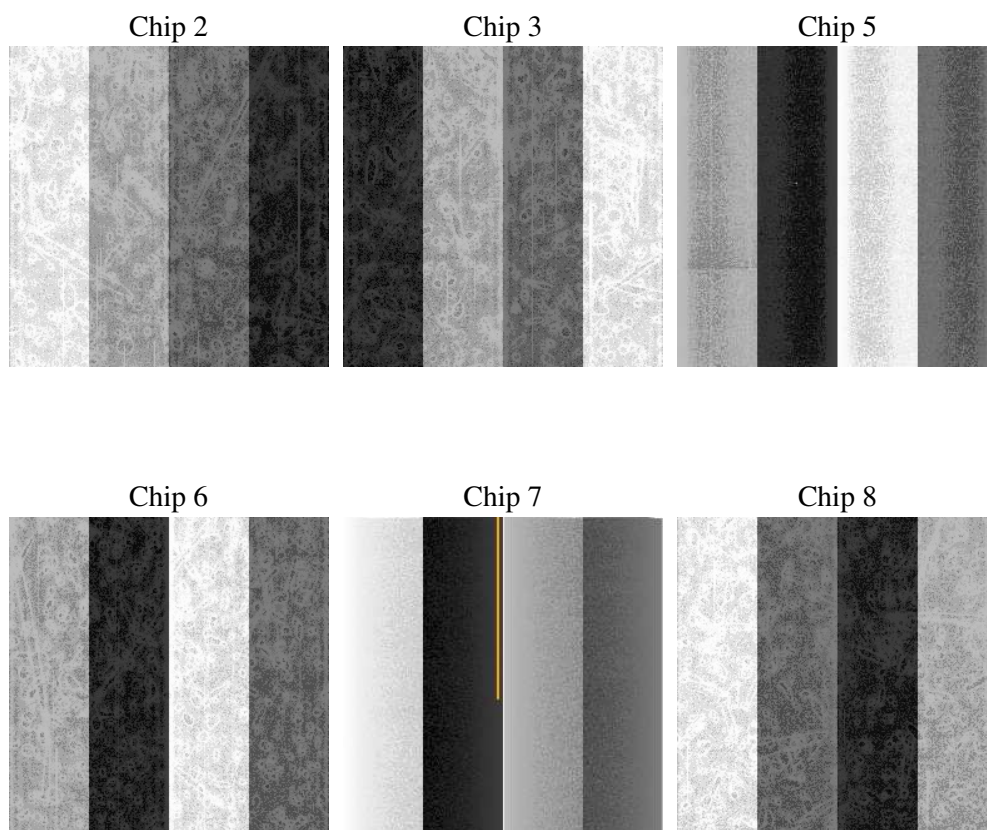
## 2 OBI

### 2.1 OBI

#### 2.1.1 Images



#### 2.1.2 Bias



### 2.1.3 Parameters

obi_num	0
ascdsver	7.6.8
caldsver	3.2.2
date	2006-07-27T14:52:28
revision	2

sched_exp_time	5039.000000
ontime	5004.1126003563
ontime2	5004.1126003563
ontime3	5004.1126003563
ontime5	5004.1126003563
ontime6	5004.1126003563
ontime7	5004.1126003563
ontime8	5004.1126003563
l1events	227102

### 2.1.4 Events

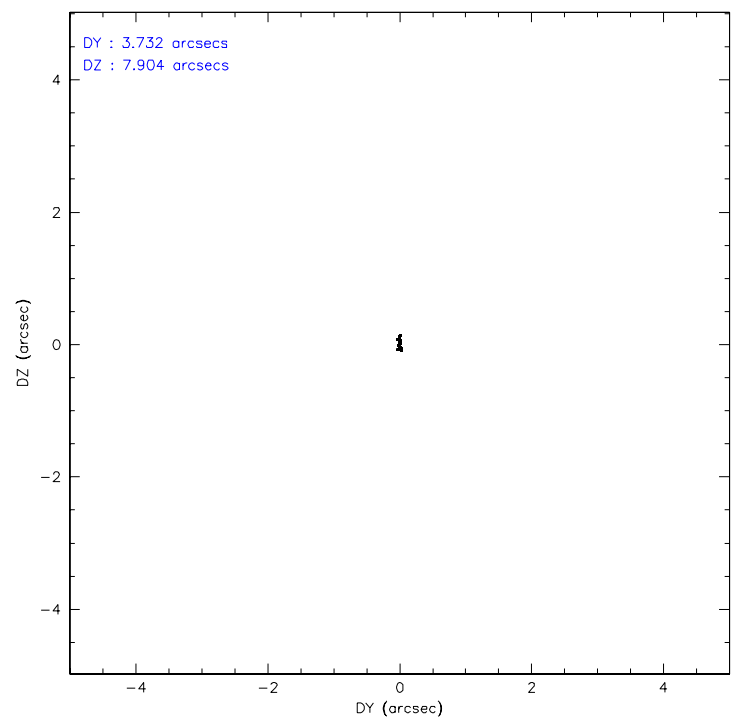
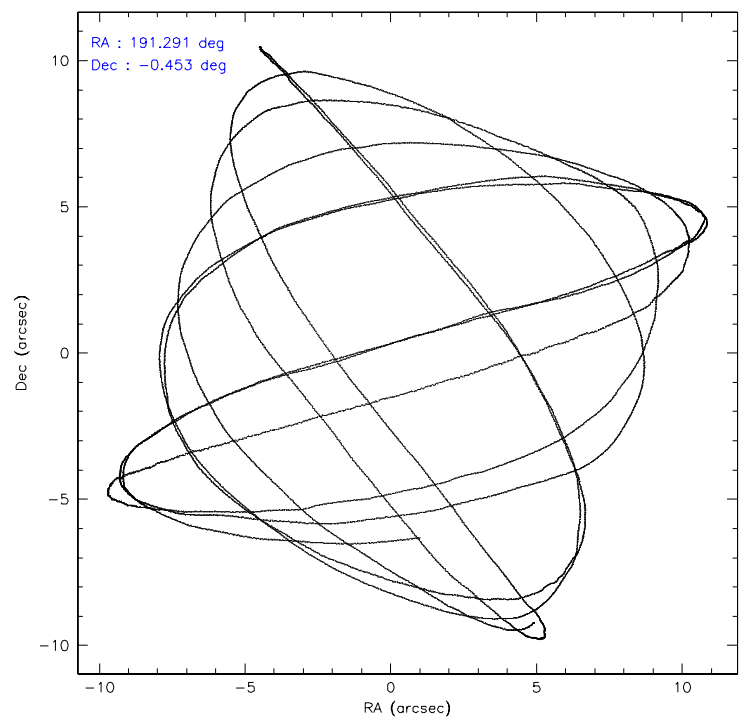
	ccd 2	ccd 3	ccd 5	ccd 6	ccd 7	ccd 8
level 1 events	30311	32597	48642	32266	43000	40286
rejected events	26603	28860	26553	28387	26158	32212
rejected %	87%	88%	54%	87%	60%	79%

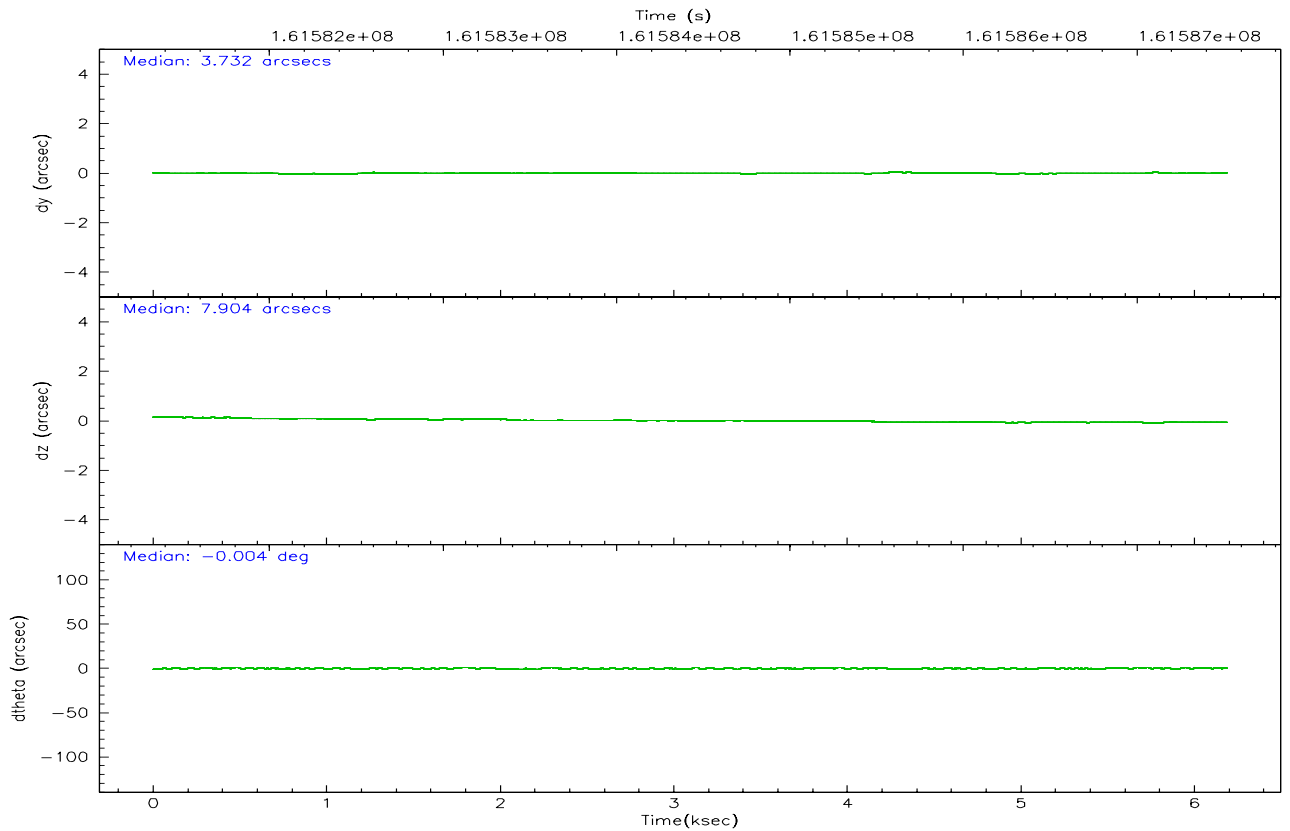
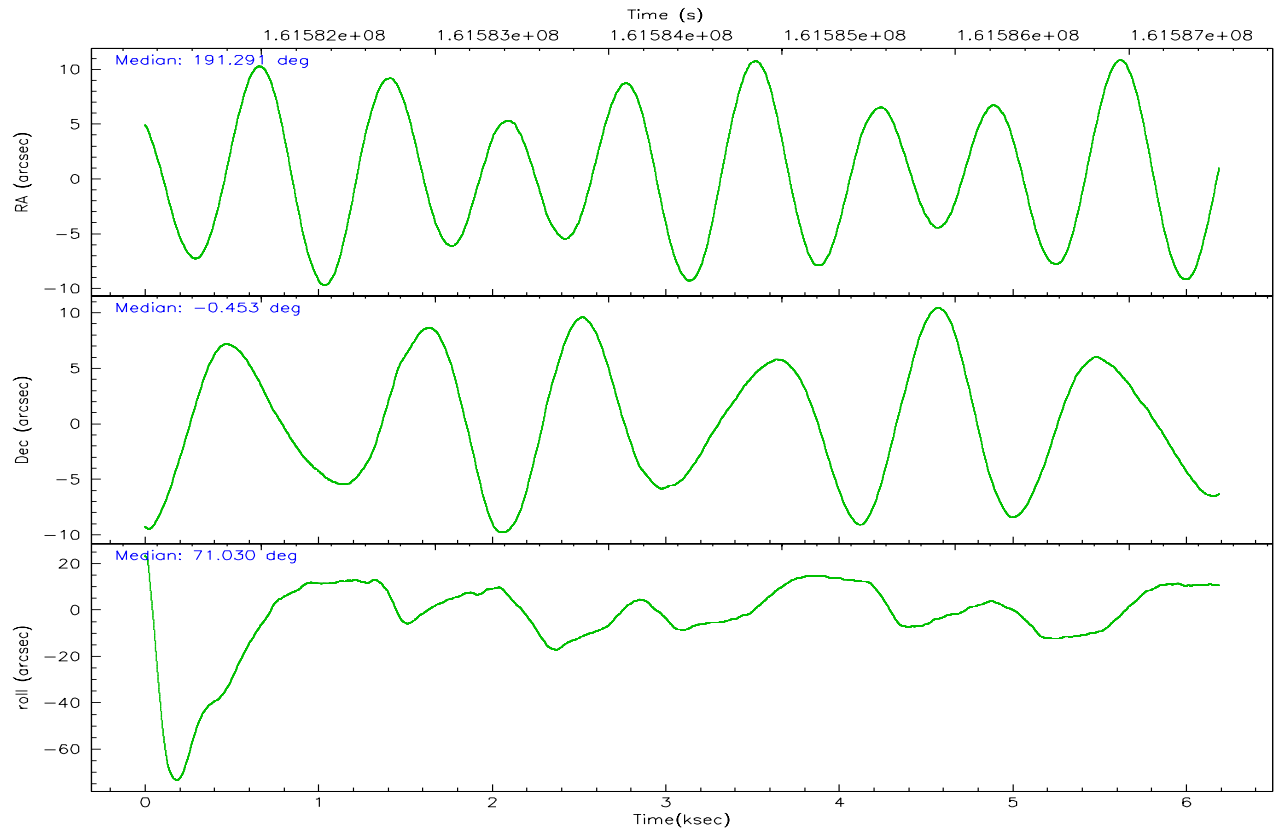
	ccd 2	ccd 3	ccd 5	ccd 6	ccd 7	ccd 8
grade 0 events	1674	1623	2643	1609	1234	2555
	5%	4%	5%	4%	2%	6%
grade 1 events	20	24	73	13	26	18
	0%	0%	0%	0%	0%	0%
grade 2 events	713	701	6558	766	4070	1748
	2%	2%	13%	2%	9%	4%
grade 3 events	330	350	472	371	889	865
	1%	1%	0%	1%	2%	2%
grade 4 events	391	415	489	342	904	776
	1%	1%	1%	1%	2%	1%
grade 5 events	1239	1355	2396	1459	2838	1833
	4%	4%	4%	4%	6%	4%
grade 6 events	602	654	11961	795	9767	2157
	1%	2%	24%	2%	22%	5%
grade 7 events	25342	27475	24050	26911	23272	30334
	83%	84%	49%	83%	54%	75%

## 2.2 Compared Parameters

Parameter	Planned	Actual	Parameter	Planned	Actual
Instrument	ACIS	ACIS	Obspar format version number	6	6
Detector	ACIS-235678	ACIS-235678	Obspar file type	PREDICTED	ACTUAL
Grating	NONE	NONE	Obspar update status	NONE	UPDATED
Data mode	FAINT	FAINT	On-chip summing requested	N	N
Observation mode	POINTING	POINTING	Subarray requested	NONE	NONE
Pointing RA	191.296527	191.2908445458557	Alternating exposures requested	N	N
Pointing Dec	-0.479592	-0.4529855858367445	Primary exposure time	0.000000	3.2
Pointing Roll	70.886658	71.04322984589353			
SIM focus pos (mm)	-0.684267	-0.6828225247311905			
SIM defocus (mm)	0	0.001444936568705701			
SIM translation stage pos (mm)	-190.132523	-190.1400660498719			
SIM translation stage offset (mm)	0	0.00754346686406393			
Observation start time	161582479.184000	161581035.17711			
Observation start date	2003-02-14T04:00:15	2003-02-14T03:37:15			
Observation end time	161587518.184000	161587748.41489			
Observation end date	2003-02-14T05:24:14	2003-02-14T05:29:08			
Read mode	TIMED	TIMED			

2.3 Aspect





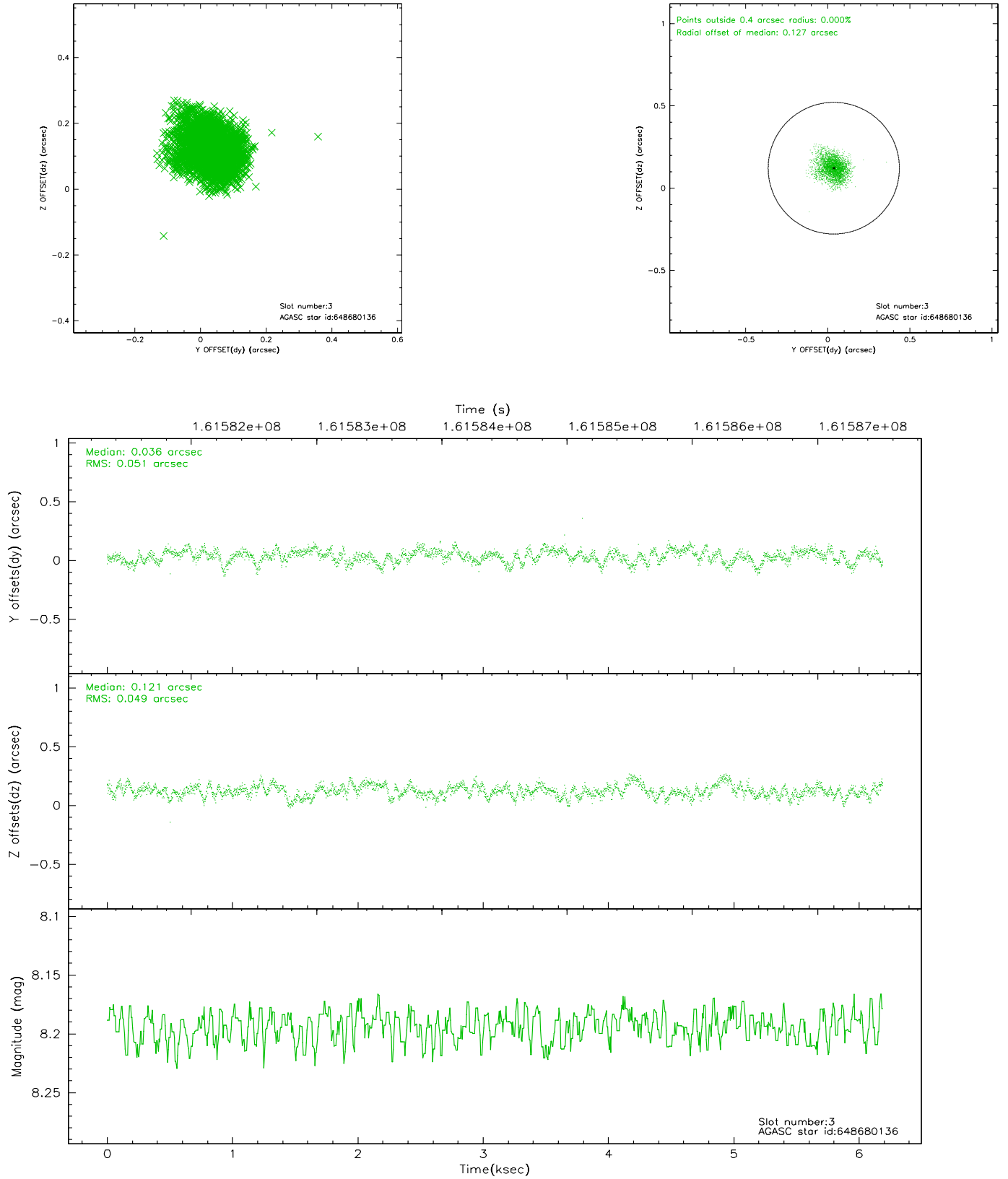
### Slot Statistics

slot	status	id	mag	n_pts	med_dy	med_dz	dr1	dr2	ra	dec	mean_y	mean_z
0	FID	ACIS-S-2	7.12	1510	0.004	0.016	0.007	0.010	0.000000	0.000000	-756.40	-1729.08
1	FID	ACIS-S-4	7.21	1510	-0.033	-0.006	0.005	0.008	0.000000	0.000000	2156.42	178.38
2	FID	ACIS-S-5	7.24	1510	-0.002	-0.001	0.006	0.010	0.000000	0.000000	-1808.01	173.16
3	GUIDE	648680136	8.19	3020	0.036	0.121	0.075	0.123	191.666772	-0.662438	-184.78	-1475.05
4	GUIDE	648680800	8.14	3021	-0.132	0.259	0.069	0.115	192.026585	-0.359285	1270.40	-2341.46
5	GUIDE	648681984	8.17	3020	0.040	0.131	0.076	0.118	191.634926	-0.821546	-763.11	-1555.16
6	GUIDE	648683608	10.18	3018	-0.045	-0.330	0.152	0.255	190.700546	-0.202114	240.82	2353.27
7	GUIDE	648683704	9.83	2941	0.105	-0.185	0.110	0.188	190.775135	-0.538340	-814.26	1704.38

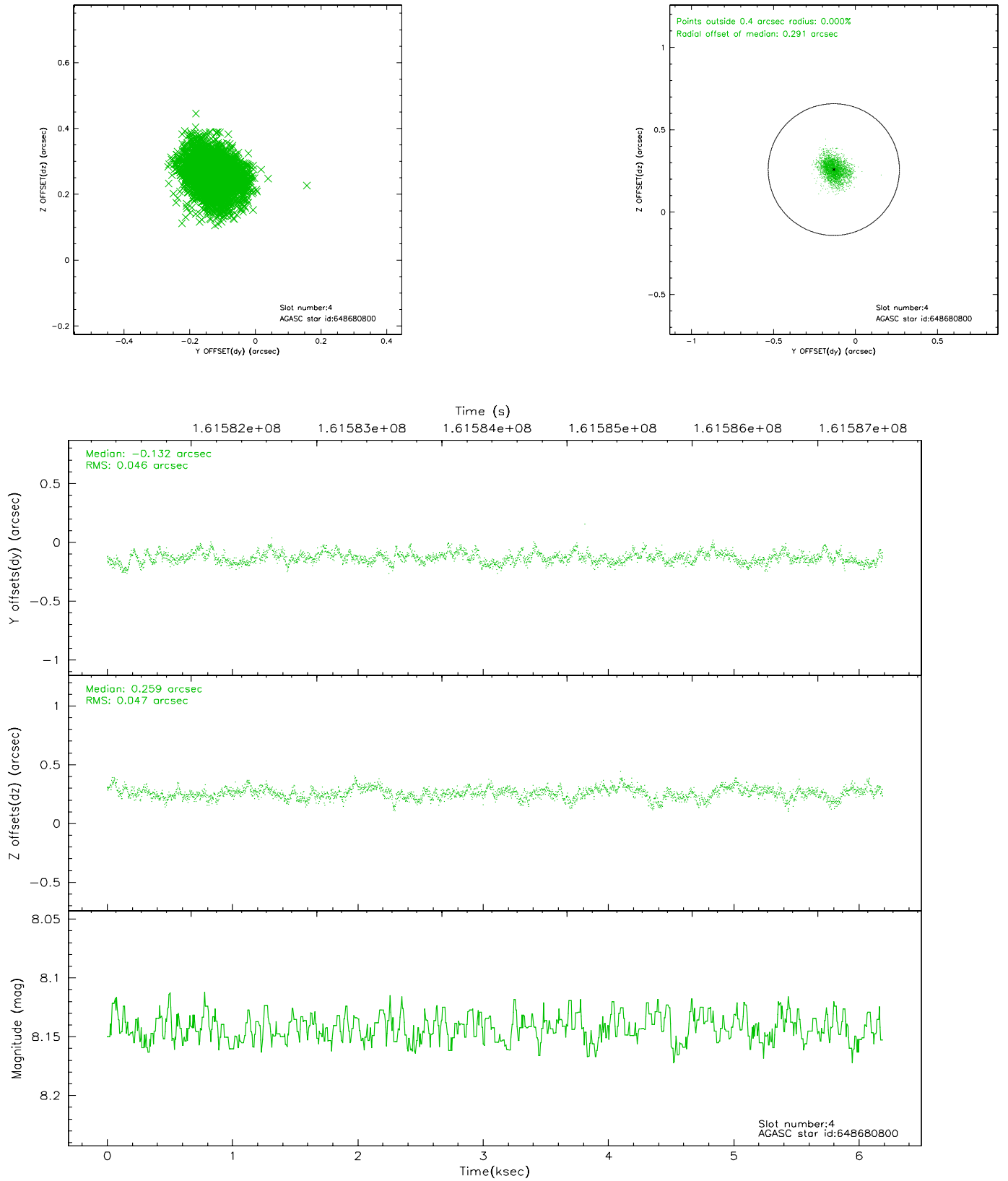


## 2.4 Star Slots

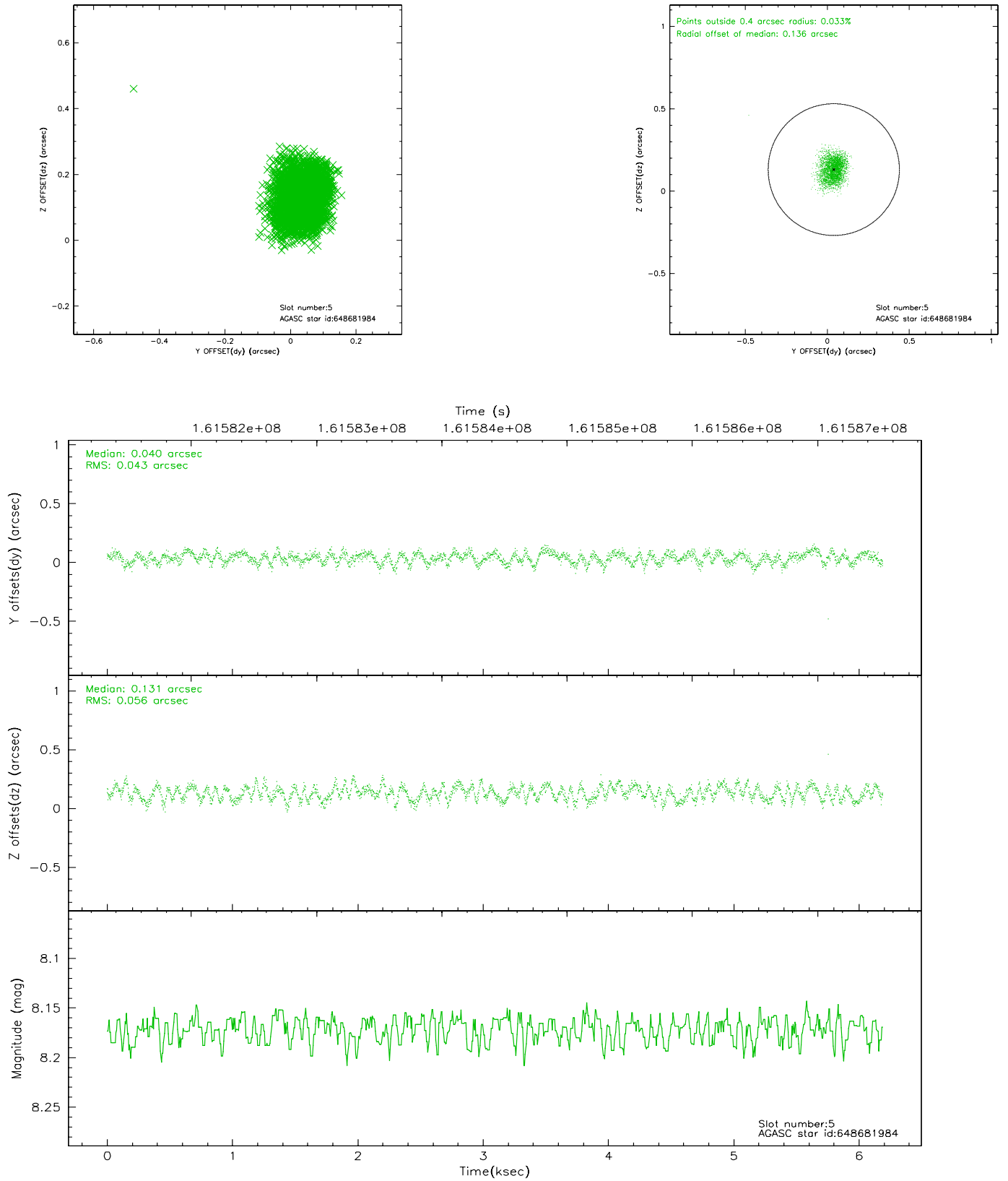
### 2.4.1 Slot 3



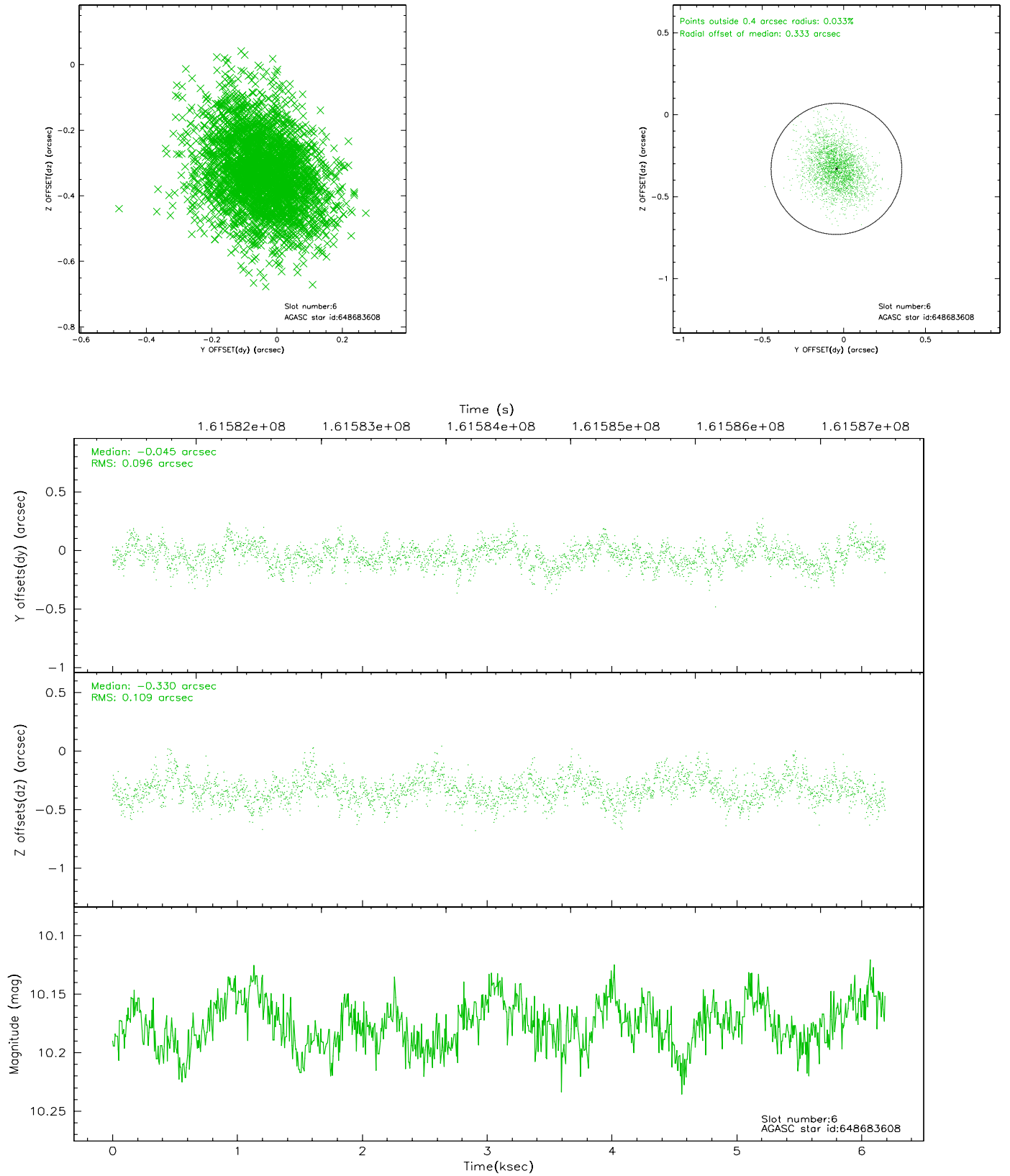
## 2.4.2 Slot 4



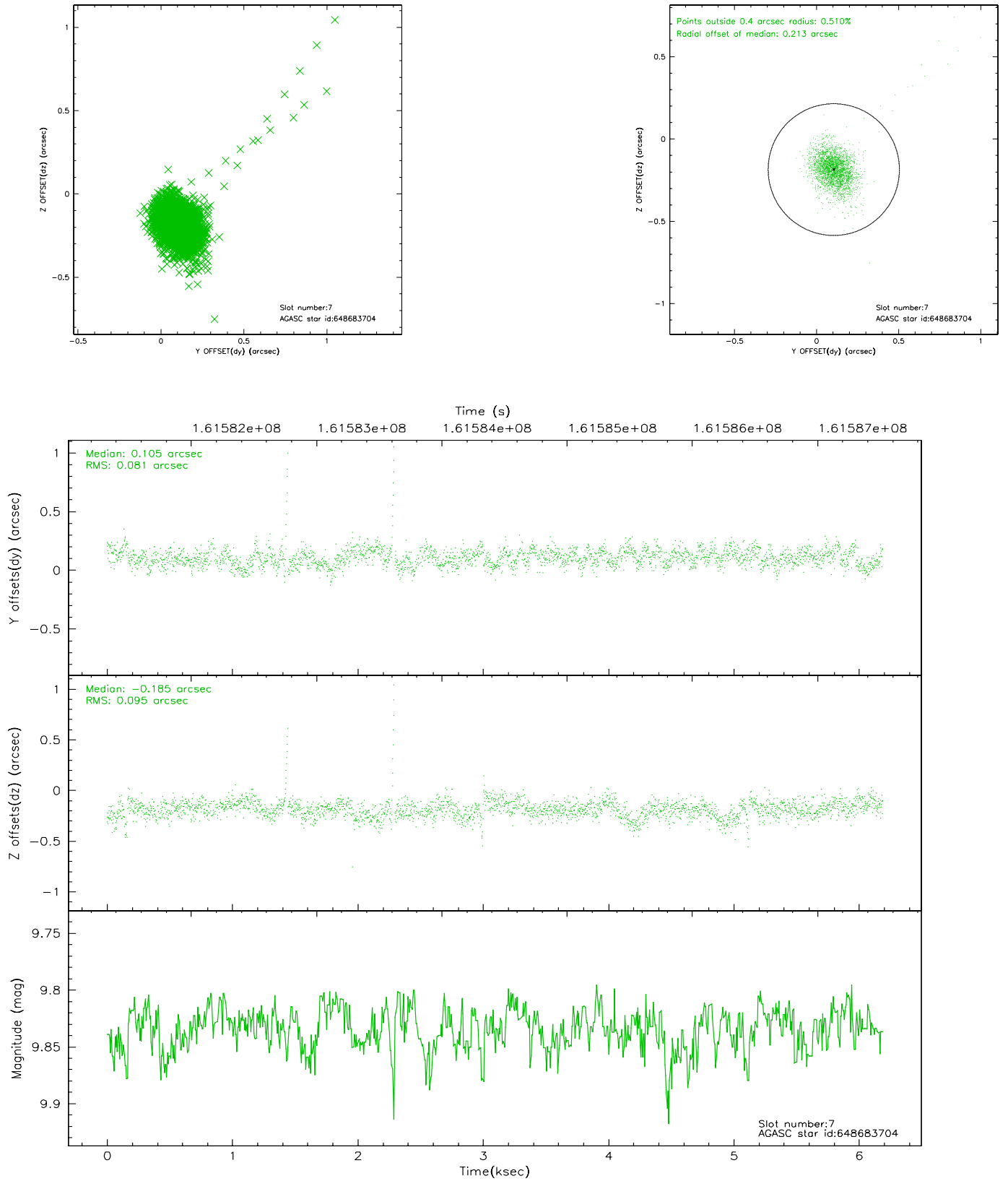
### 2.4.3 Slot 5



## 2.4.4 Slot 6

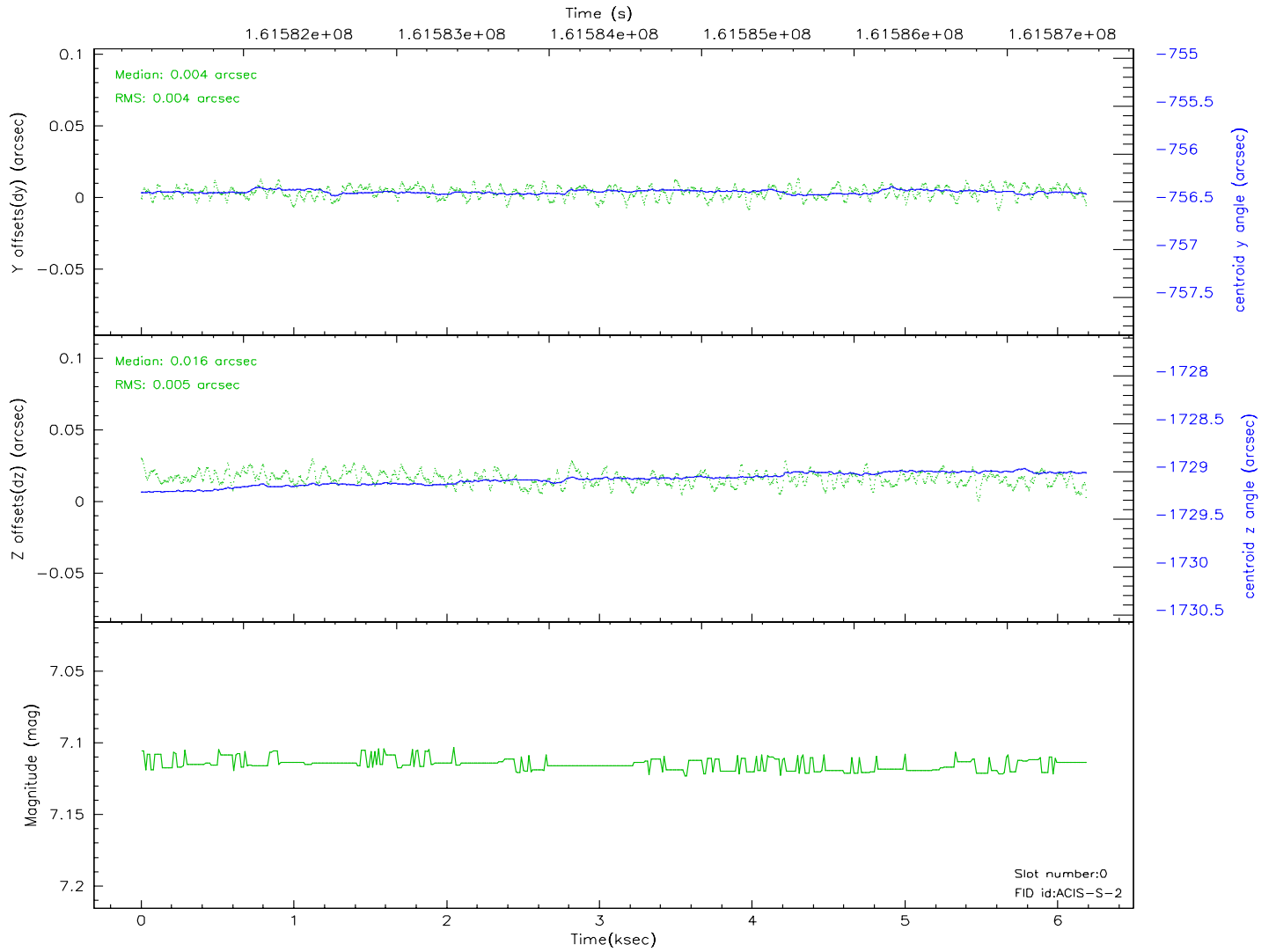
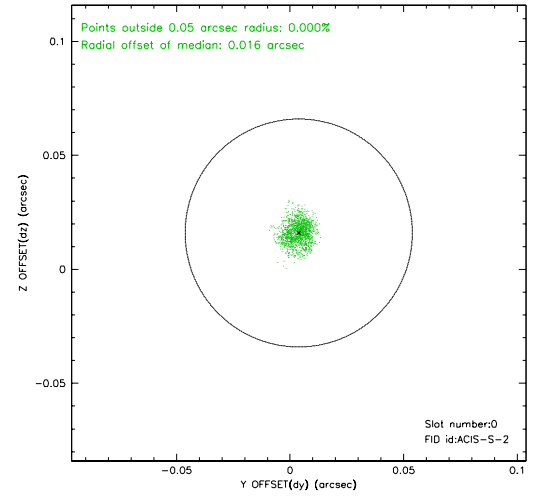
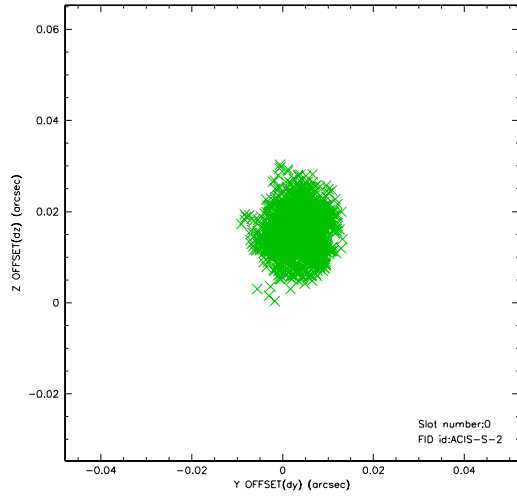


## 2.4.5 Slot 7

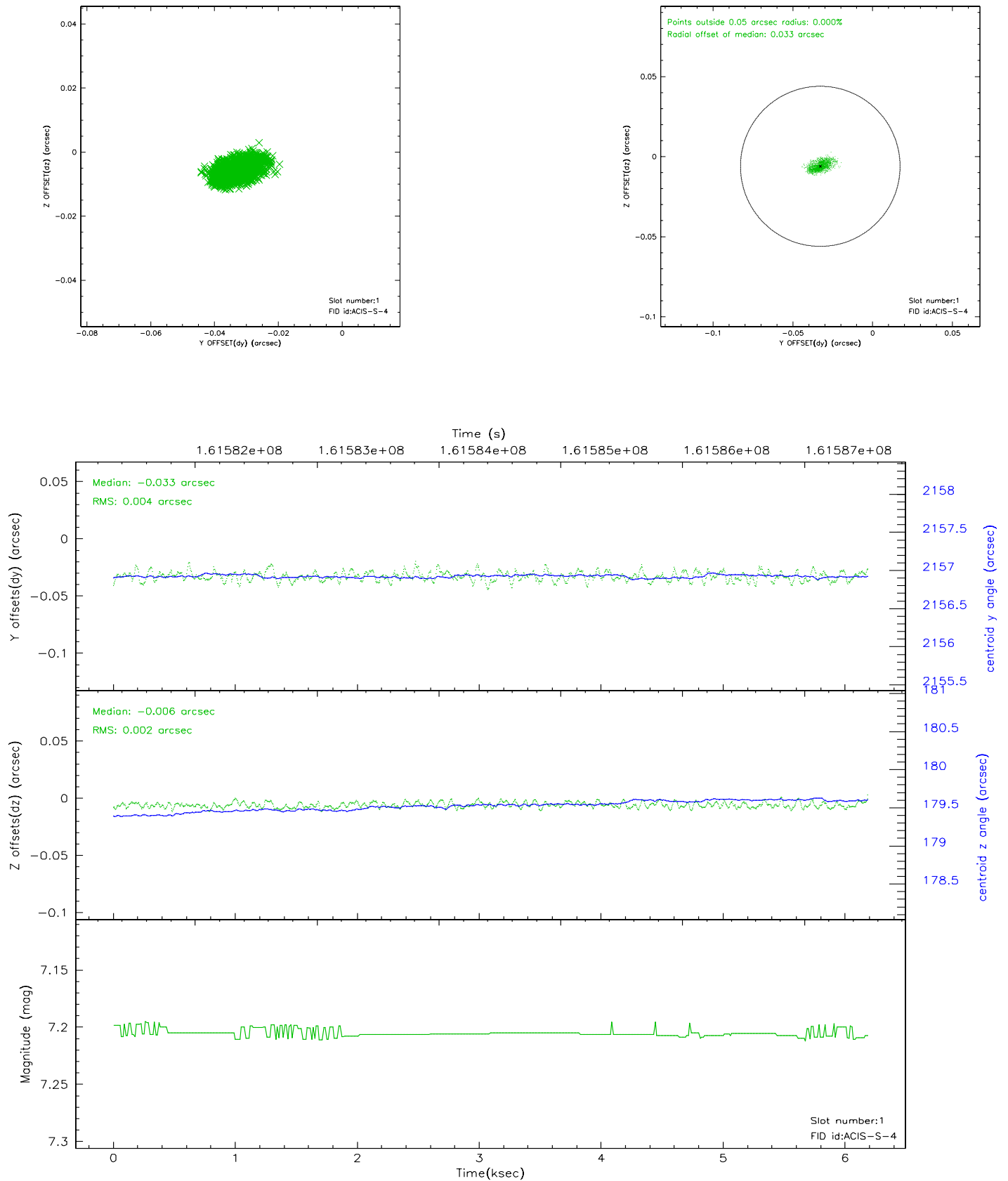


## 2.5 FID Slots

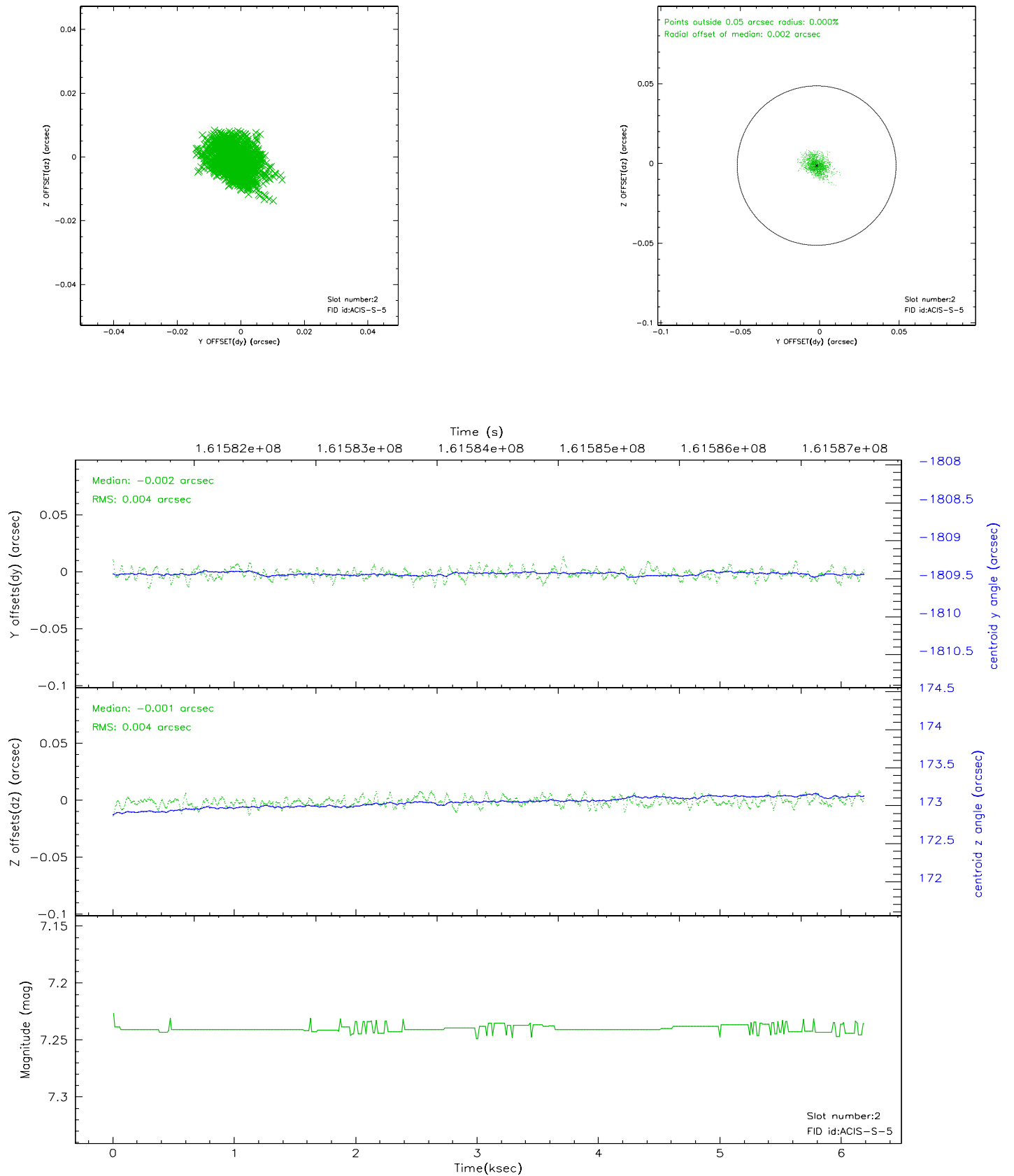
### 2.5.1 Slot 0



## 2.5.2 Slot 1

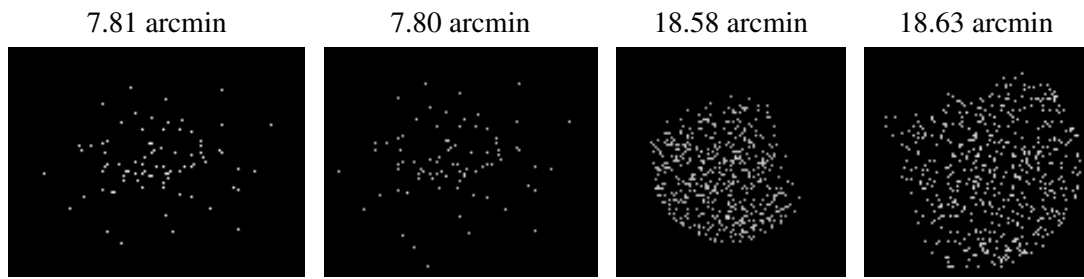


### 2.5.3 Slot 2





### 3 Point Sources



## A Summary

### A.1 Status

V&V Scientist	Jen Lauer
V&V Date (YYYY-MM-DD)	2006.07.27
V&V Edition	1
V&V Disposition and Status	OK
V&V Charge Time	5.001

### A.2 Comments