

# V&V Reference Report

## L2 ASCDS Version : 7.6.8

Observation 3994 - L2 Version 001  
Chandra X-Ray Center

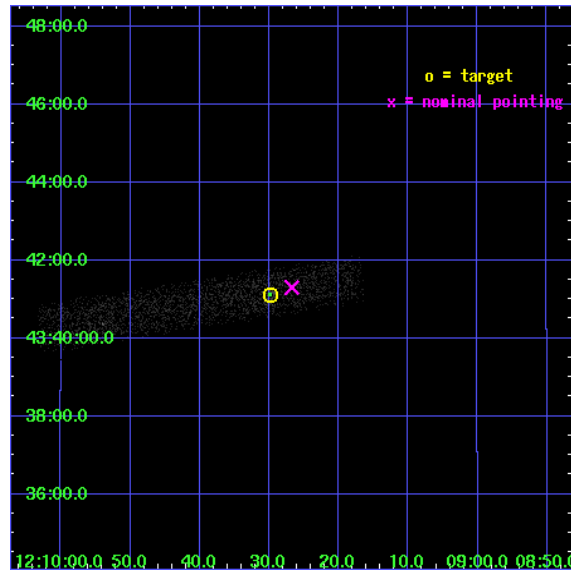
L2 Processing Date : Jul 24 2006

## Contents

<b>1</b>	<b>Front</b>	<b>2</b>
<b>2</b>	<b>OBI</b>	<b>3</b>
2.1	OBI . . . . .	3
2.1.1	Images . . . . .	3
2.1.2	Bias . . . . .	3
2.1.3	Parameters . . . . .	4
2.1.4	Events . . . . .	4
2.2	Compared Parameters . . . . .	5
2.3	Aspect . . . . .	6
2.4	Star Slots . . . . .	9
2.4.1	Slot 3 . . . . .	9
2.4.2	Slot 4 . . . . .	10
2.4.3	Slot 5 . . . . .	11
2.4.4	Slot 6 . . . . .	12
2.4.5	Slot 7 . . . . .	13
2.5	FID Slots . . . . .	14
2.5.1	Slot 0 . . . . .	14
2.5.2	Slot 1 . . . . .	15
2.5.3	Slot 2 . . . . .	16
<b>3</b>	<b>Point Sources</b>	<b>17</b>
<b>A</b>	<b>Summary</b>	<b>18</b>
A.1	Status . . . . .	18
A.2	Comments . . . . .	18

# 1 Front

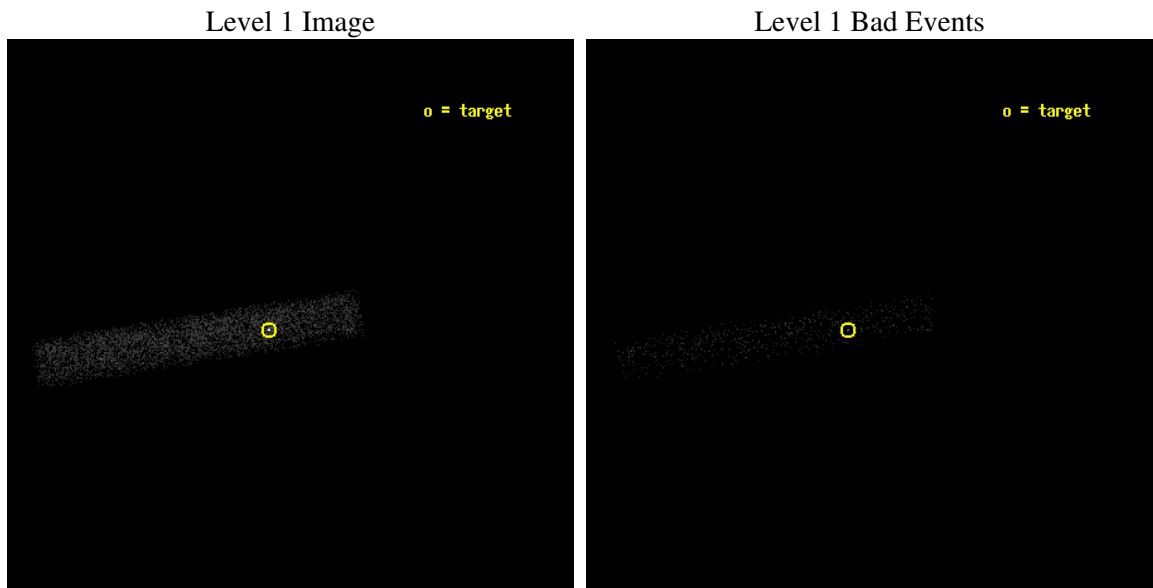
seq_num	700673
obs_id	3994
title	AN X-RAY SURVEY OF RADIO-SELECTED LOW-LUMINOSITY AGNS
observer	Dr. Yuichi Terashima
object	NGC 4138
dtcycle	0
cycle	P
ra_targ	182.374167
dec_targ	43.685194
ra_nom	182.3614901978
dec_nom	43.688382247689
roll_nom	171.07825106236
revision	2
ontime	6130.800091356
livetime	5560.3120726973
ontime7	6130.800091356
l2events	3966



## 2 OBI

### 2.1 OBI

#### 2.1.1 Images



#### 2.1.2 Bias

Chip 7



### 2.1.3 Parameters

obi_num	0
ascdsver	7.6.8
caldsver	3.2.2
date	2006-07-24T17:40:21
revision	2

sched_exp_time	5298.000000
ontime	6157.2968090773
ontime7	6157.2968090773
l1events	8048

### 2.1.4 Events

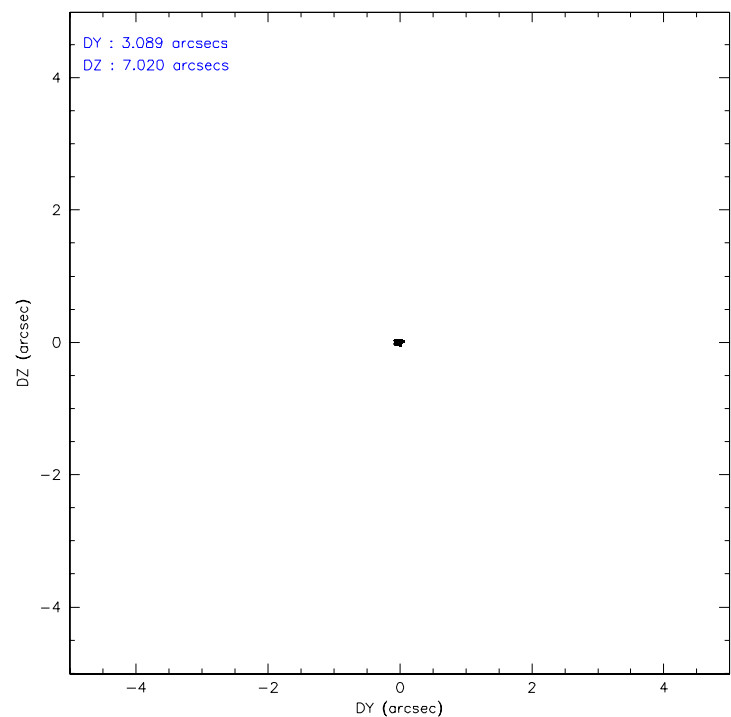
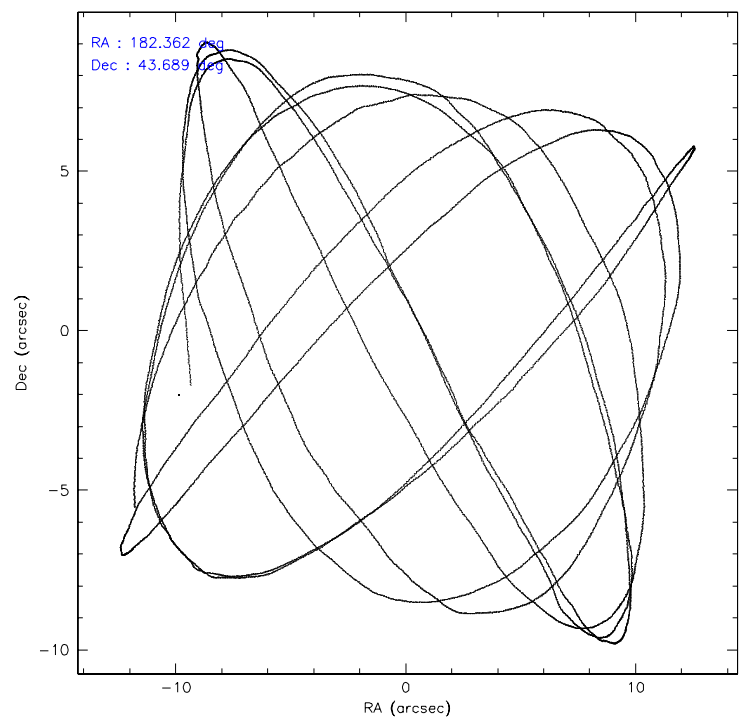
	<b>ccd 7</b>
level 1 events	8048
rejected events	3964
rejected %	49%

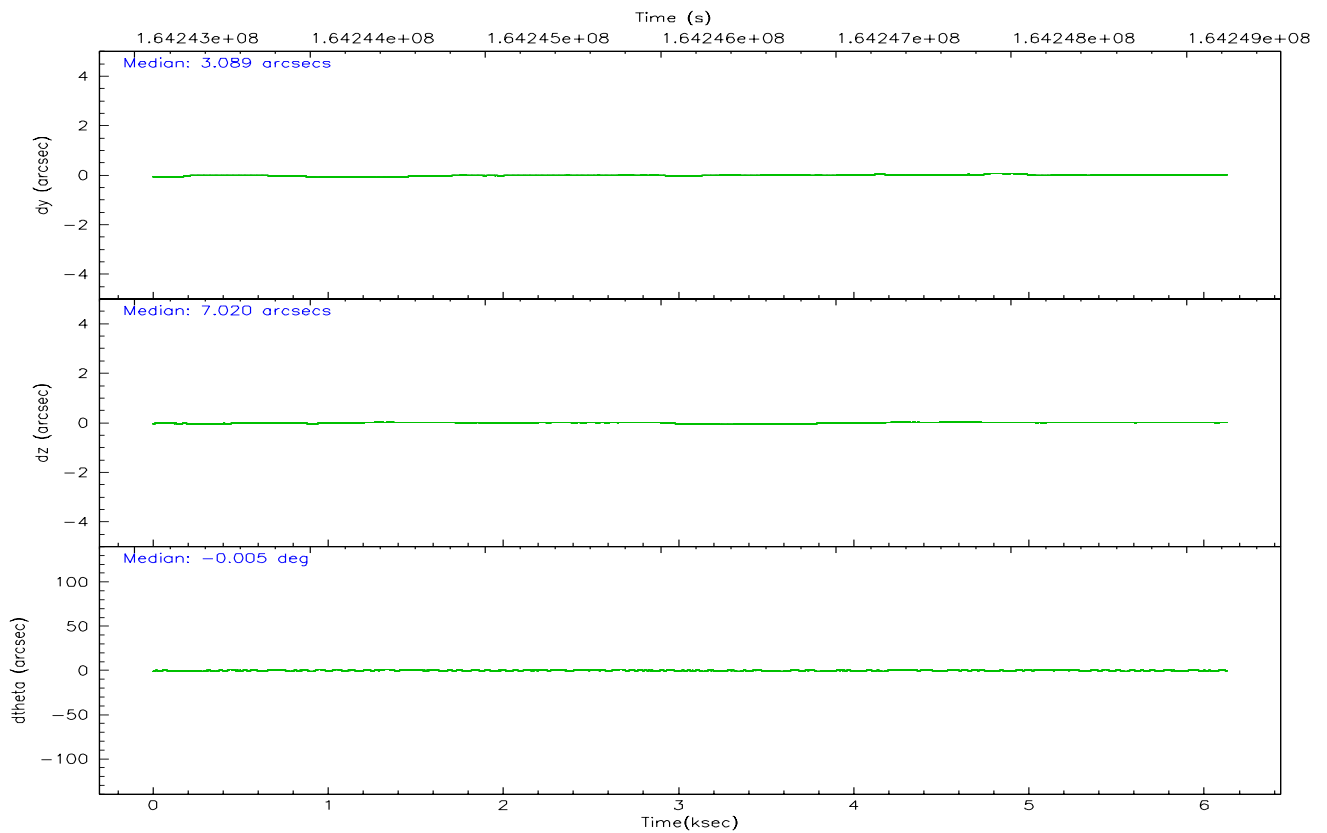
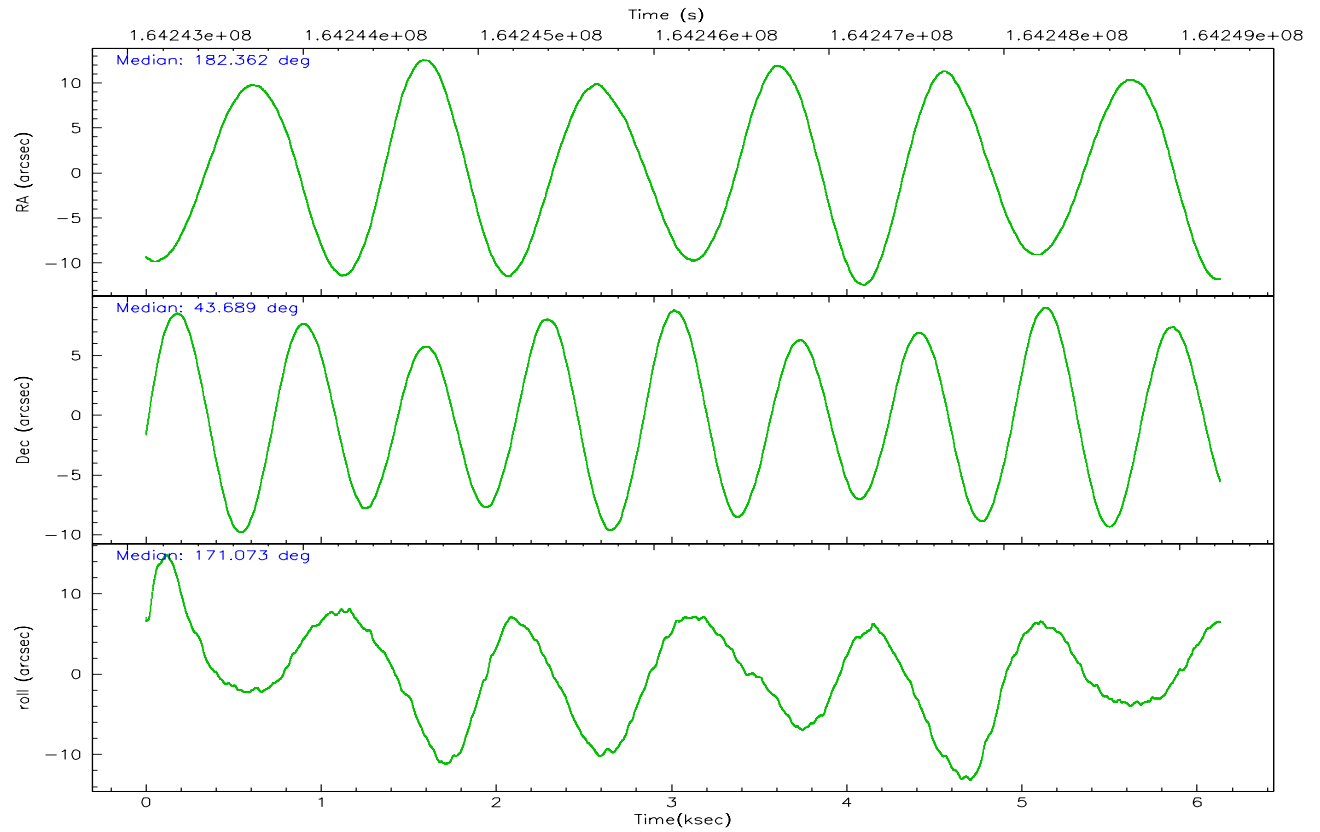
	<b>ccd 7</b>
grade 0 events	472
	5%
grade 1 events	8
	0%
grade 2 events	940
	11%
grade 3 events	459
	5%
grade 4 events	421
	5%
grade 5 events	518
	6%
grade 6 events	1812
	22%
grade 7 events	3418
	42%

## 2.2 Compared Parameters

Parameter	Planned	Actual	Parameter	Planned	Actual
Instrument	ACIS	ACIS	Obspar format version number	6	6
Detector	ACIS-7	ACIS-7	Obspar file type	PREDICTED	ACTUAL
Grating	NONE	NONE	Obspar update status	NONE	UPDATED
Data mode	VFAINT	VFAINT	On-chip summing requested	N	N
Observation mode	POINTING	POINTING	Subarray requested	1/8	1/8
Pointing RA	182.396482	182.361490197797	Subarray start row	0	449
Pointing Dec	43.698474	43.68838224768885	Subarray row count	1024	128
Pointing Roll	170.897443	171.0782510623615	Alternating exposures requested	N	N
SIM focus pos (mm)	-0.684267	-0.6828225247311905	Primary exposure time	0.000000	0.4
SIM defocus (mm)	0	0.001444936568705701			
SIM translation stage pos (mm)	-190.132523	-190.1425803651734			
SIM translation stage offset (mm)	0	0.01005778216563158			
Observation start time	164243938.184000	164242650.22656			
Observation start date	2003-03-16T23:17:54	2003-03-16T22:57:30			
Observation end time	164249236.184000	164250094.28938			
Observation end date	2003-03-17T00:46:12	2003-03-17T01:01:34			
Read mode	TIMED	TIMED			

### 2.3 Aspect





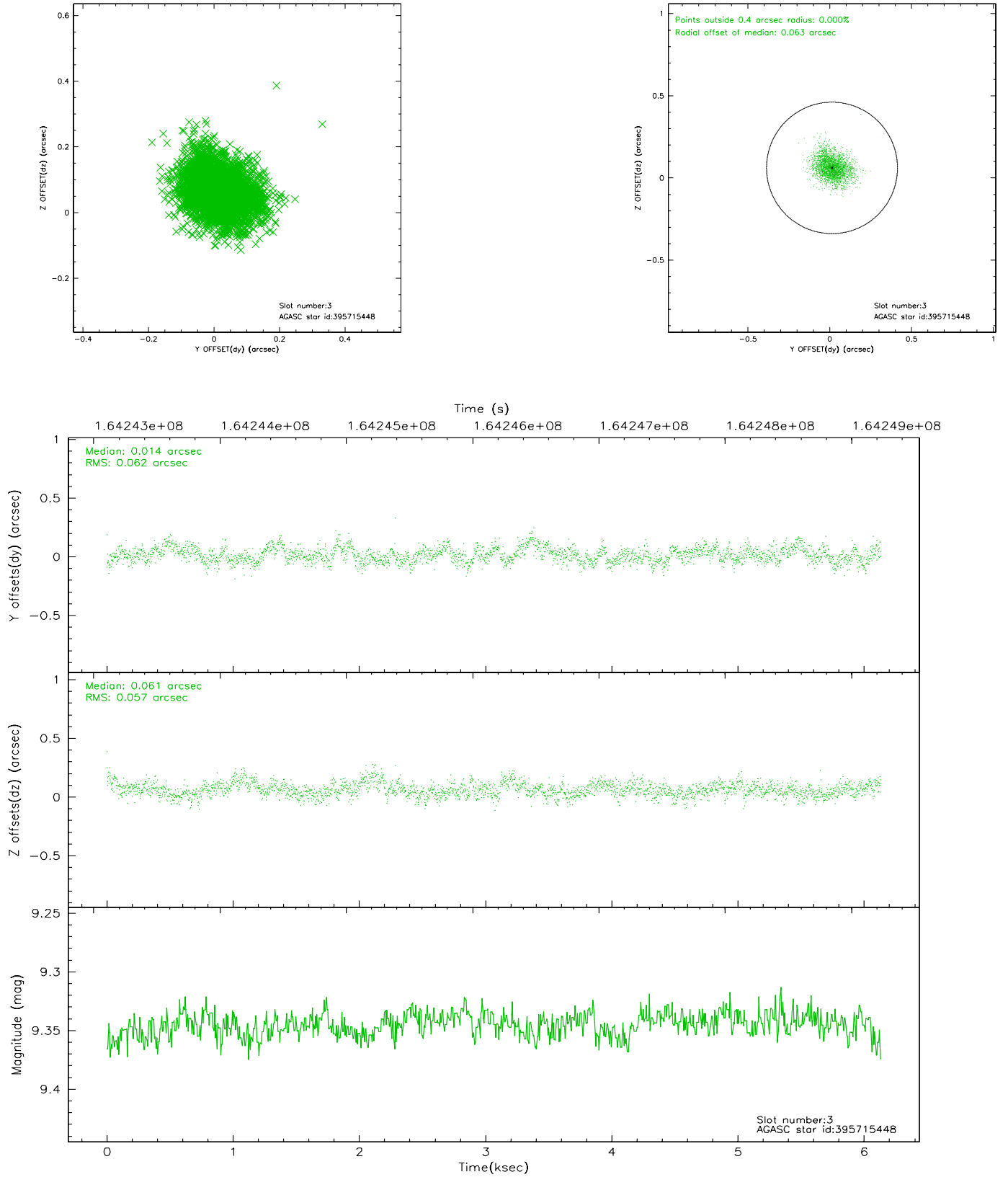
### Slot Statistics

slot	status	id	mag	n_pts	med_dy	med_dz	dr1	dr2	ra	dec	mean_y	mean_z
0	FID	ACIS-S-2	7.12	1496	-0.017	0.016	0.006	0.010	0.000000	0.000000	-755.73	-1728.12
1	FID	ACIS-S-4	7.20	1496	-0.024	0.004	0.005	0.009	0.000000	0.000000	2157.09	179.38
2	FID	ACIS-S-5	7.24	1496	0.009	-0.011	0.006	0.010	0.000000	0.000000	-1807.32	174.10
3	GUIDE	395715448	9.34	2987	0.014	0.061	0.089	0.146	182.849040	43.704154	-1159.10	-209.27
4	GUIDE	395717992	10.02	2973	-0.000	-0.166	0.107	0.173	182.854455	43.561058	-1256.78	296.47
5	GUIDE	395718992	8.47	2992	0.061	0.098	0.058	0.096	181.388768	43.164808	2310.89	2300.90
6	GUIDE	395720384	10.22	2989	0.005	0.026	0.159	0.284	182.995481	43.714906	-1527.74	-309.45
7	GUIDE	395709808	8.54	2991	-0.084	-0.012	0.086	0.139	182.156296	44.413388	1016.92	-2443.99

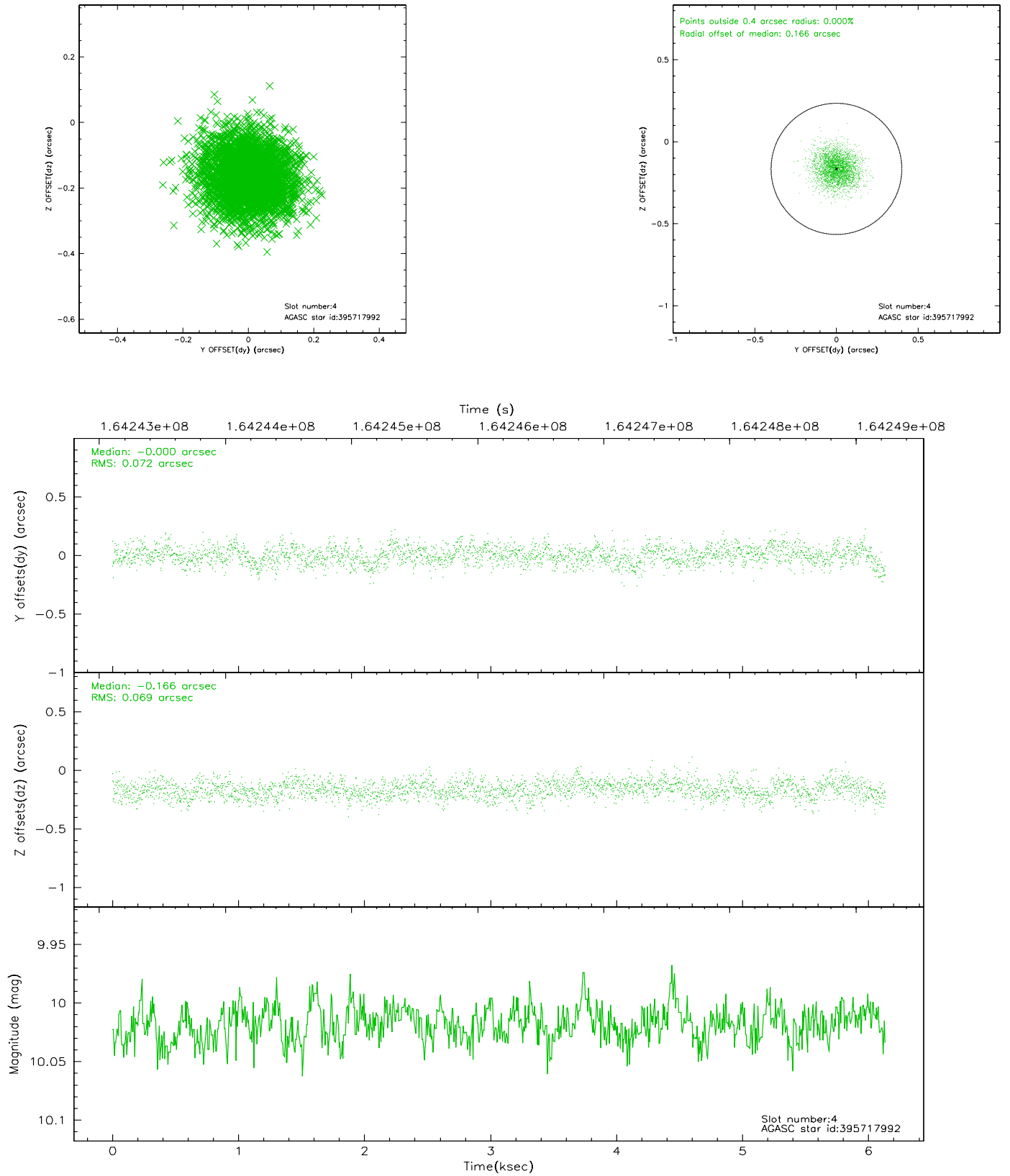


## 2.4 Star Slots

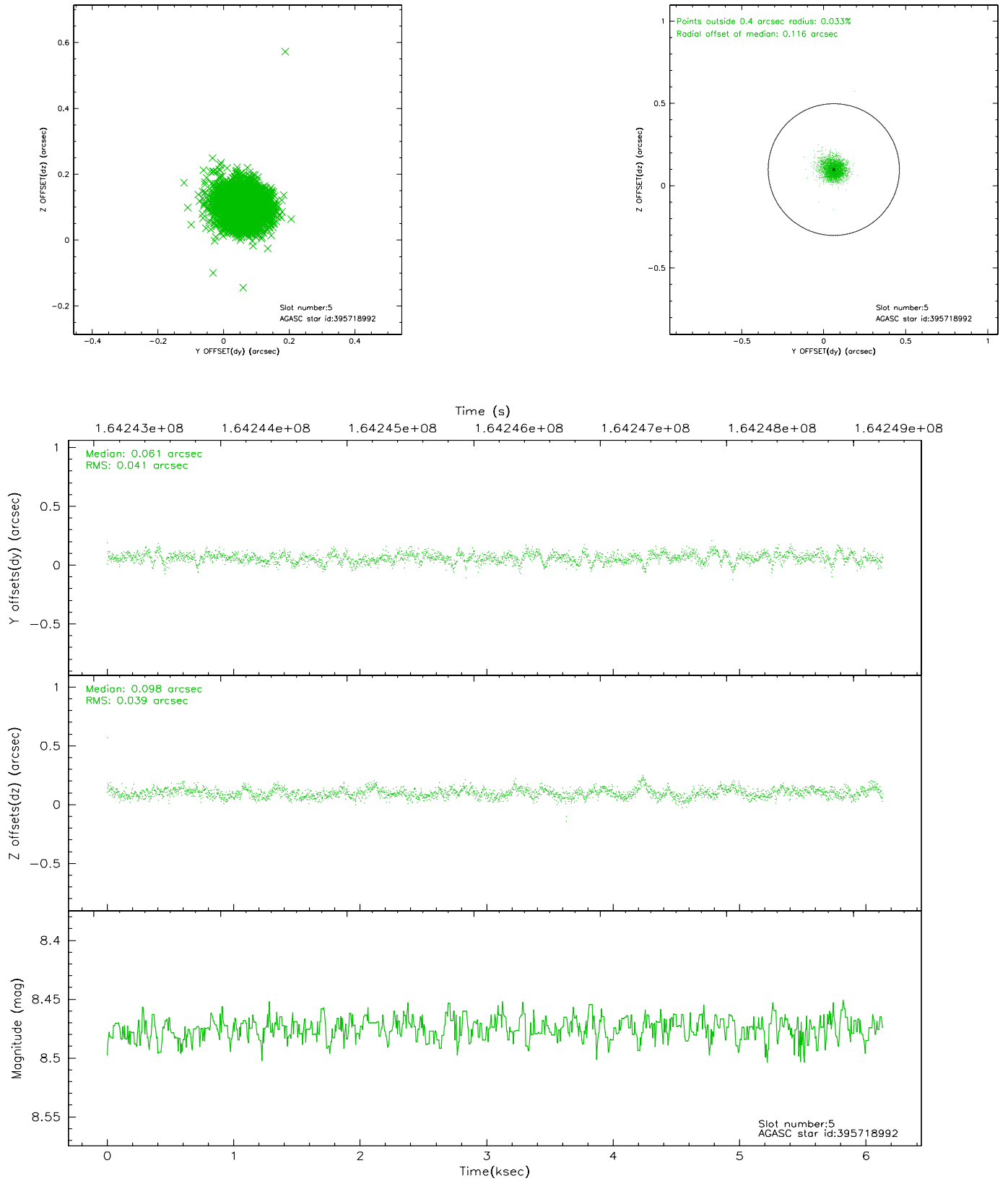
### 2.4.1 Slot 3



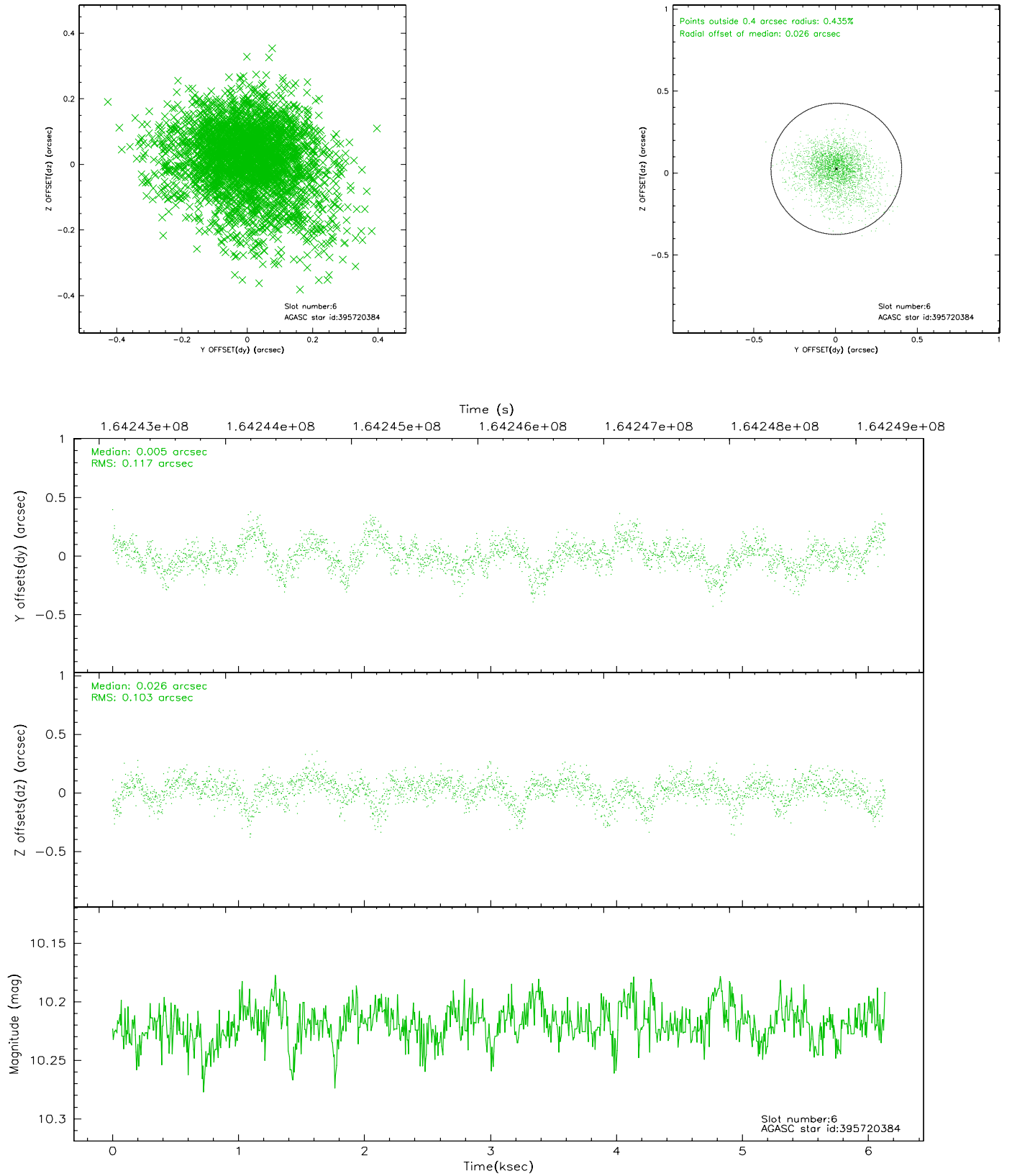
## 2.4.2 Slot 4



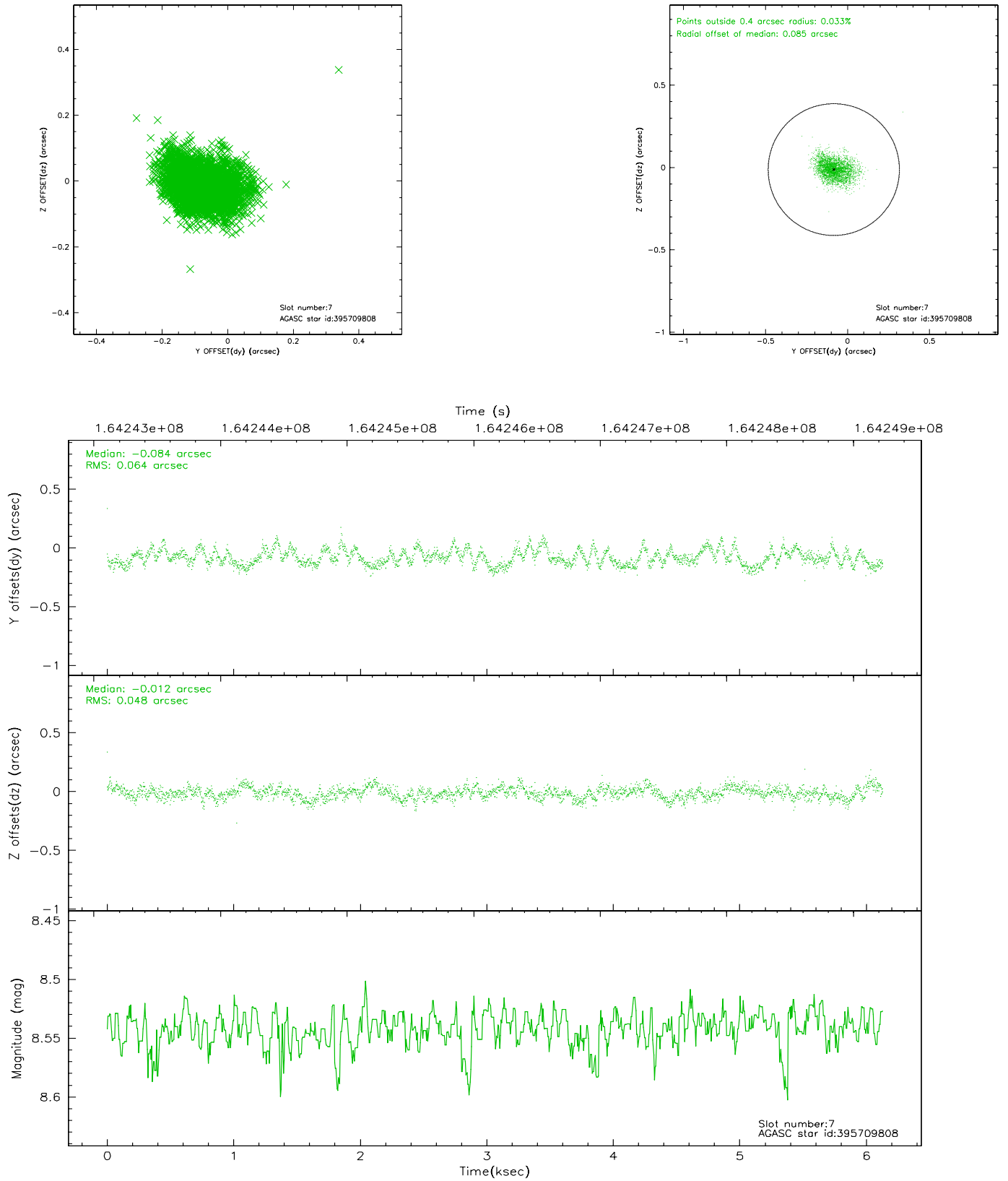
### 2.4.3 Slot 5



## 2.4.4 Slot 6

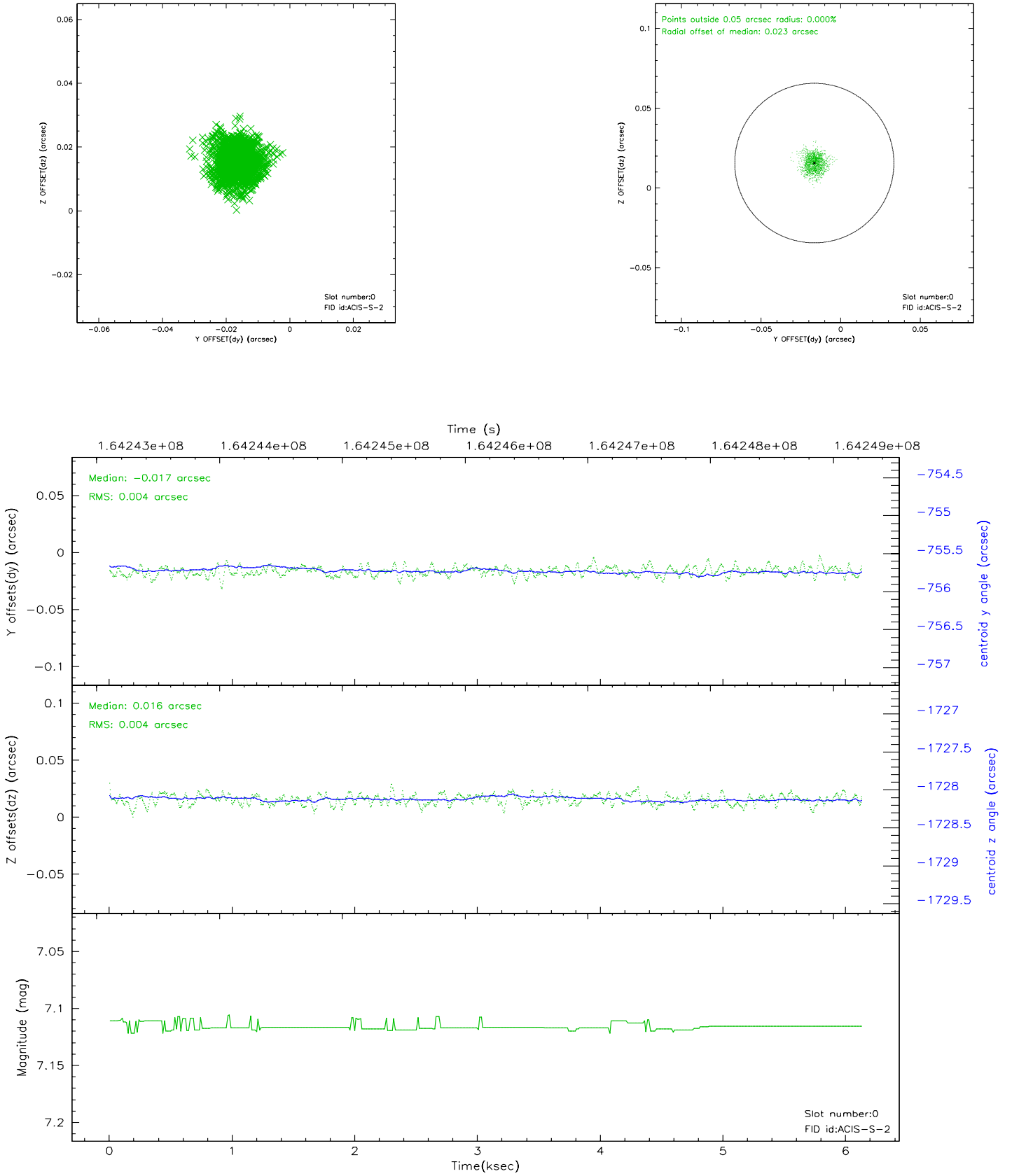


## 2.4.5 Slot 7

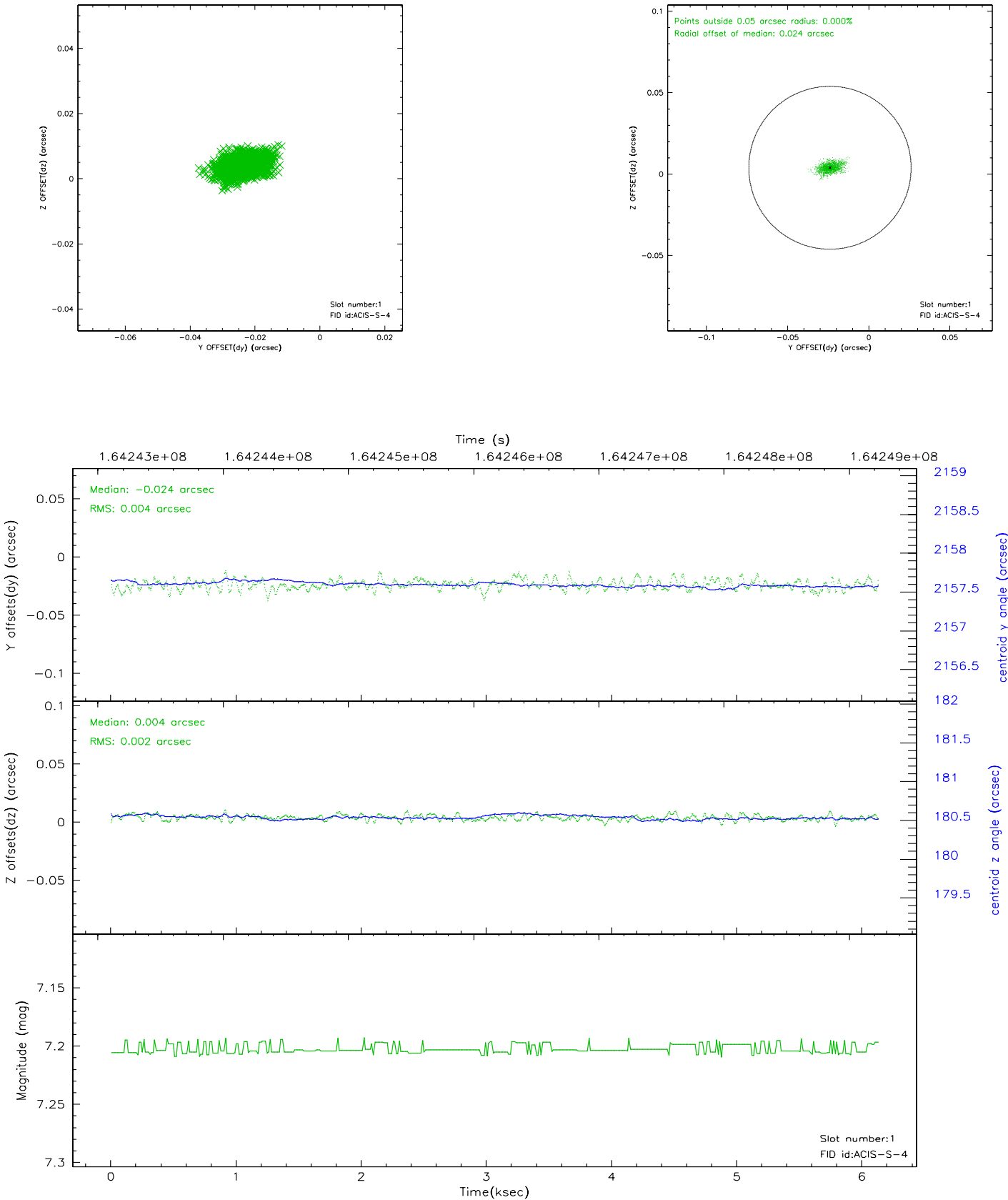


## 2.5 FID Slots

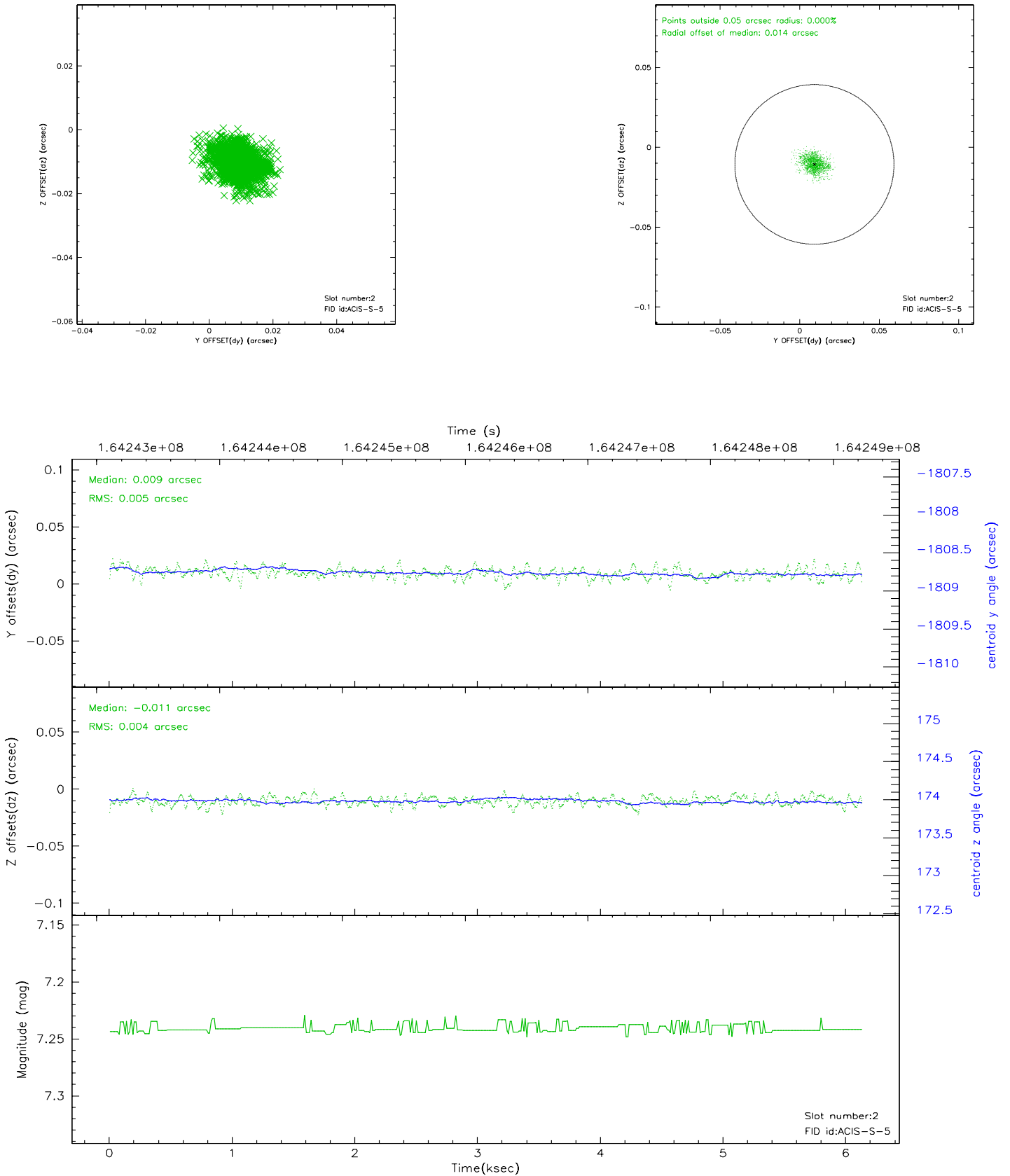
### 2.5.1 Slot 0



2.5.2 Slot 1



### 2.5.3 Slot 2





### 3 Point Sources

## A Summary

### A.1 Status

V&V Scientist	Beth Sundheim
V&V Date (YYYY-MM-DD)	2006.07.24
V&V Edition	1
V&V Disposition and Status	OK
V&V Charge Time	6.13

### A.2 Comments