

V&V Reference Report

L2 ASCDS Version : 7.6.8

Observation 3987 - L2 Version 001
Chandra X-Ray Center

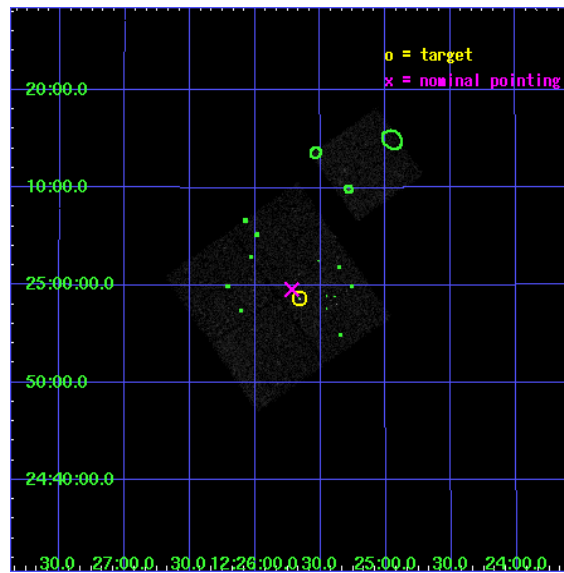
L2 Processing Date : Jun 26 2006

Contents

1	Front	2
2	OBI	3
2.1	OBI	3
2.1.1	Images	3
2.1.2	Bias	3
2.1.3	Parameters	4
2.1.4	Events	4
2.2	Compared Parameters	5
2.3	Aspect	6
2.4	Star Slots	9
2.4.1	Slot 3	9
2.4.2	Slot 4	10
2.4.3	Slot 5	11
2.4.4	Slot 6	12
2.4.5	Slot 7	13
2.5	FID Slots	14
2.5.1	Slot 0	14
2.5.2	Slot 1	15
2.5.3	Slot 2	16
3	Point Sources	17
A	Summary	18
A.1	Status	18
A.2	Comments	18

1 Front

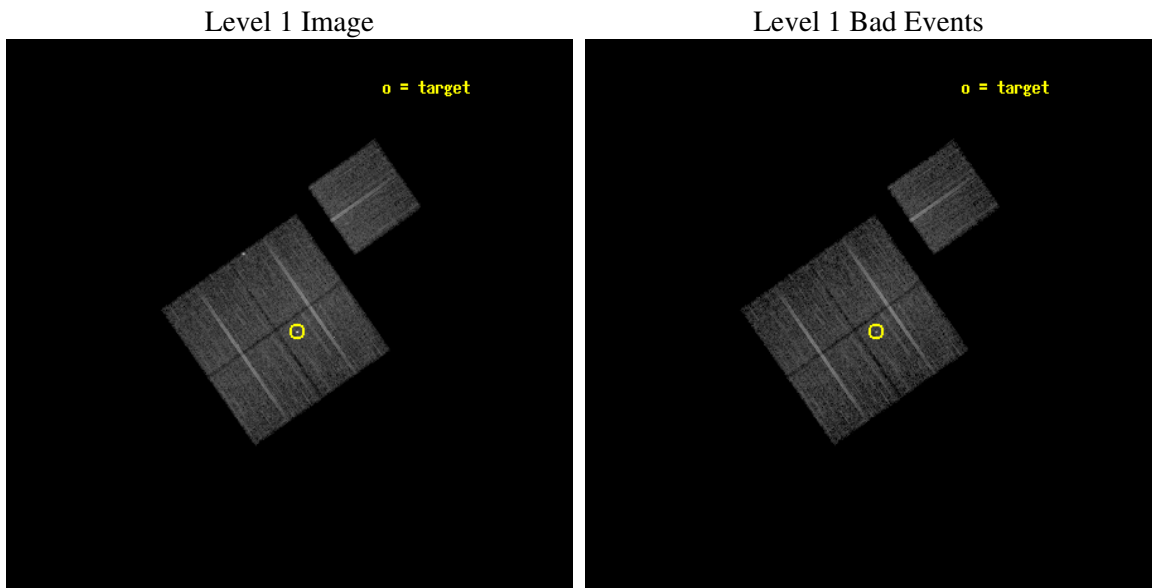
seq_num	700666
obs_id	3987
title	DO QSO EXTENDED EMISSION REGIONS RESULT FROM COOLING FLOWS?
observer	Dr Alan Stockton
object	4C 25.40 FIELD
dtcycle	0
cycle	P
ra_targ	186.414583
dec_targ	24.976806
ra_nom	186.42948430888
dec_nom	24.99290330459
roll_nom	55.02299135787
revision	2
ontime	15775.899969667
livetime	15569.776222515
ontime0	15775.899969667
ontime1	15769.618029177
ontime2	15772.75897947
ontime3	15775.899969667
ontime6	15775.899969667
l2events	33571



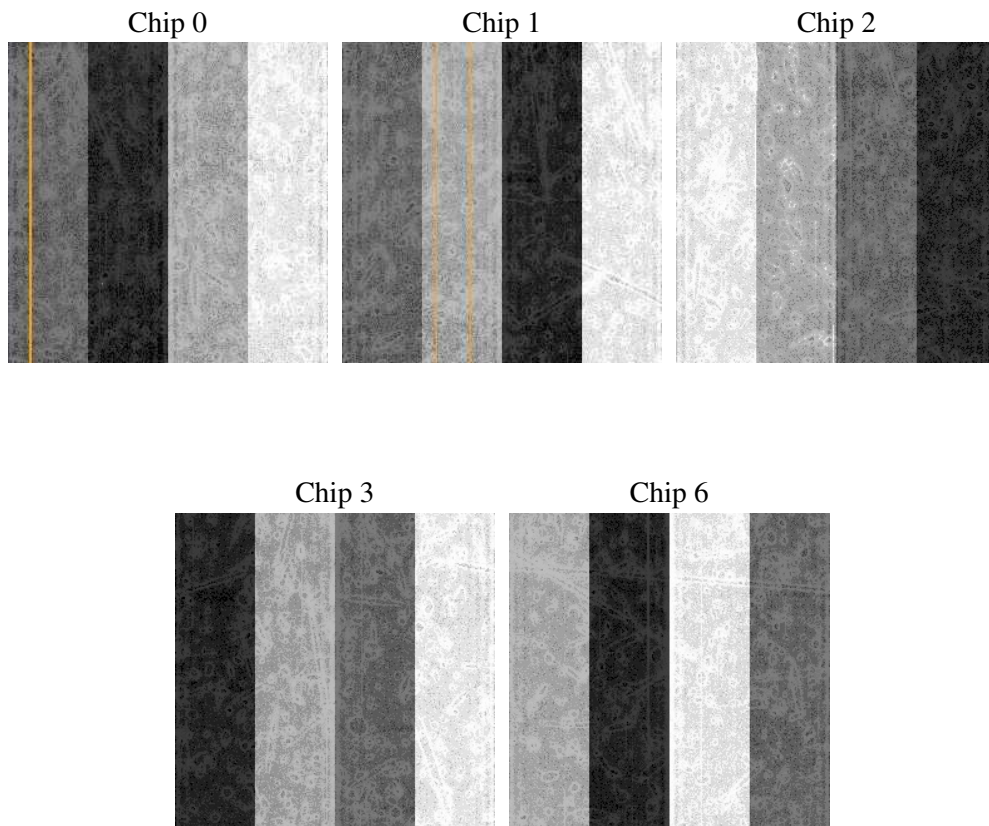
2 OBI

2.1 OBI

2.1.1 Images



2.1.2 Bias



2.1.3 Parameters

obi_num	5
ascdsver	7.6.8
caldbver	3.2.2
date	2006-06-26T22:54:16
revision	2

sched_exp_time	15651.000000
ontime	15780.398834348
ontime0	15780.398834348
ontime1	15774.116893858
ontime2	15777.257874072
ontime3	15780.398834348
ontime6	15780.398834348
l1events	324296

2.1.4 Events

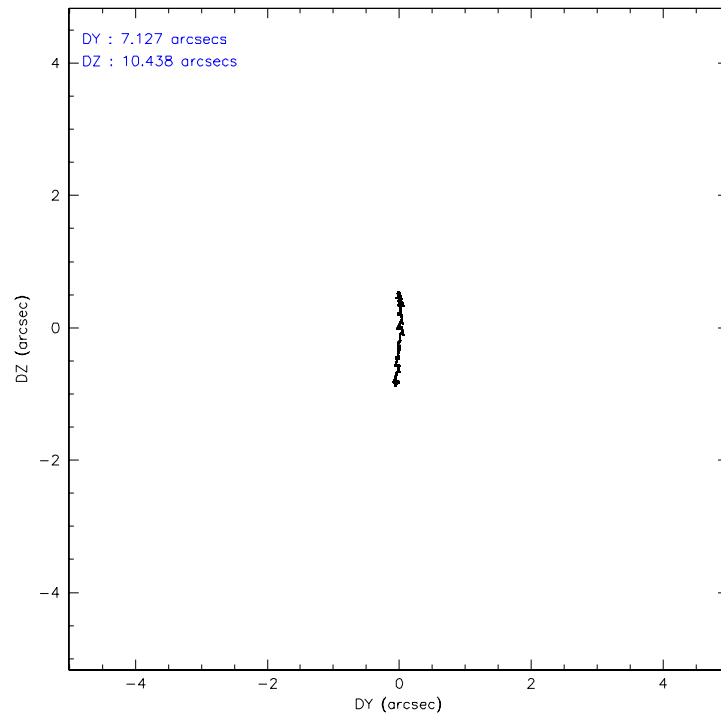
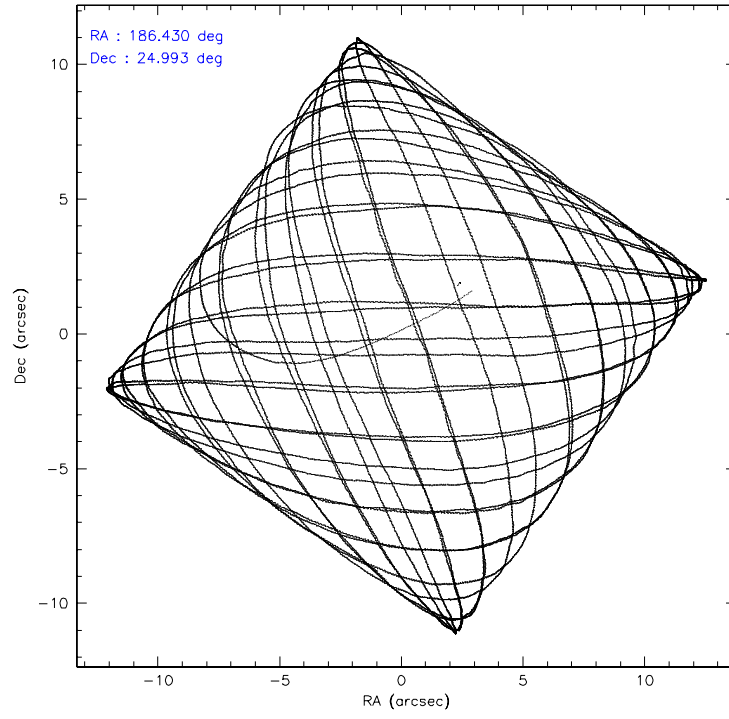
	ccd 0	ccd 1	ccd 2	ccd 3	ccd 6
level 1 events	60202	62464	67230	69834	64566
rejected events	53135	54855	59821	59765	57321
rejected %	88%	87%	88%	85%	88%

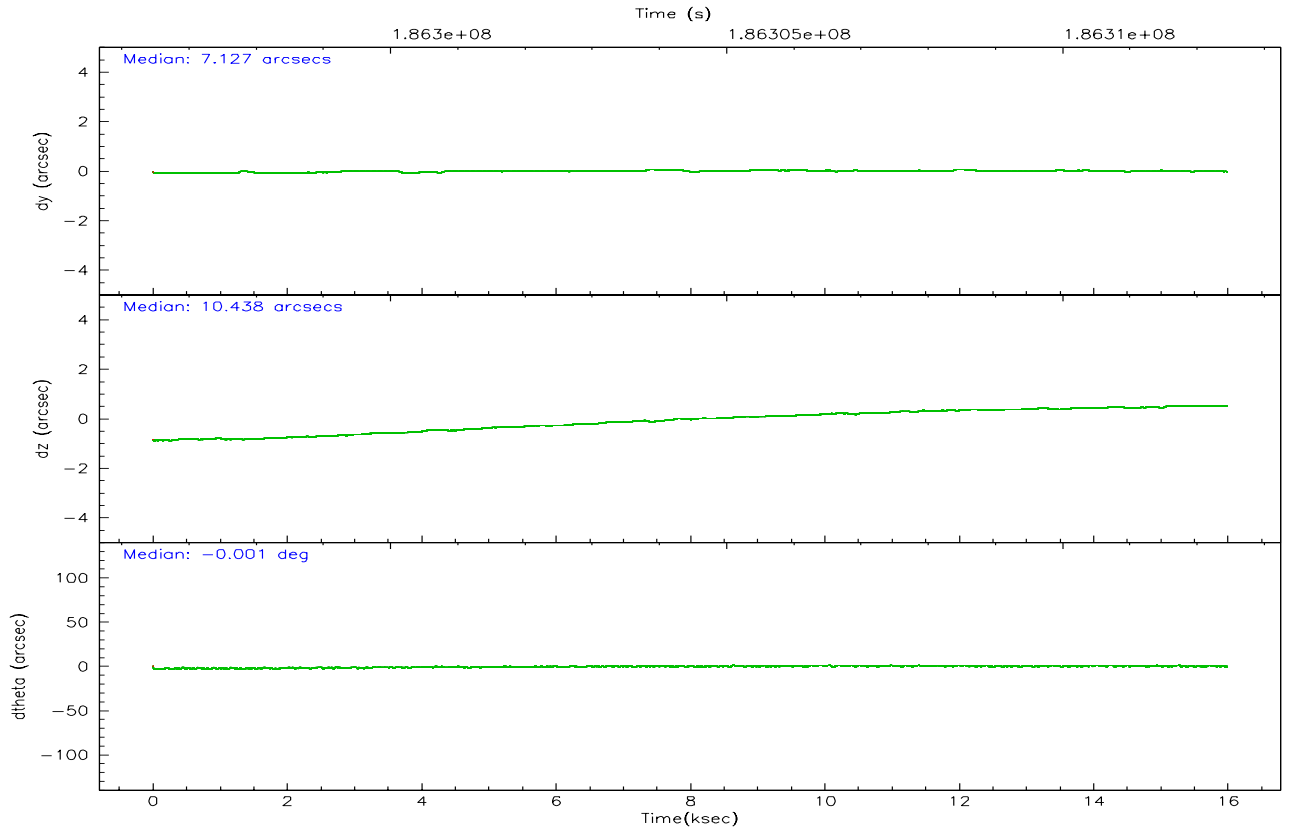
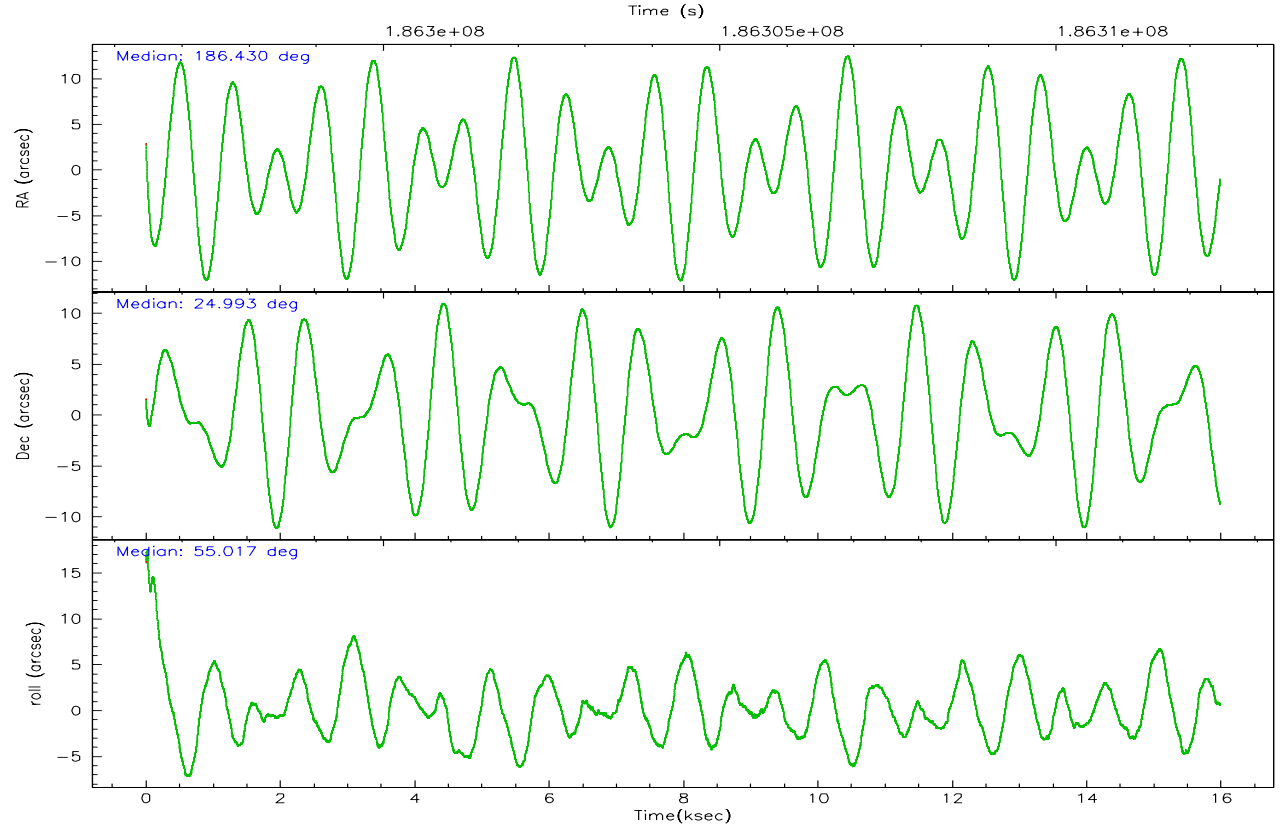
	ccd 0	ccd 1	ccd 2	ccd 3	ccd 6
grade 0 events	2585	2706	3104	4875	2608
	4%	4%	4%	6%	4%
grade 1 events	31	35	40	238	29
	0%	0%	0%	0%	0%
grade 2 events	1602	1641	1512	1859	1543
	2%	2%	2%	2%	2%
grade 3 events	786	888	765	927	782
	1%	1%	1%	1%	1%
grade 4 events	732	863	759	933	793
	1%	1%	1%	1%	1%
grade 5 events	2447	2617	2289	2940	2693
	4%	4%	3%	4%	4%
grade 6 events	1365	1515	1275	1481	1523
	2%	2%	1%	2%	2%
grade 7 events	50654	52199	57486	56581	54595
	84%	83%	85%	81%	84%

2.2 Compared Parameters

Parameter	Planned	Actual	Parameter	Planned	Actual
Instrument	ACIS	ACIS	Obspar format version number	6	6
Detector	ACIS-01236	ACIS-01236	Obspar file type	PREDICTED	ACTUAL
Grating	NONE	NONE	Obspar update status	NONE	UPDATED
Data mode	VFAINT	VFAINT	On-chip summing requested	N	N
Observation mode	POINTING	POINTING	Subarray requested	NONE	NONE
Pointing RA	186.427011	186.4294843088822	Alternating exposures requested	N	N
Pointing Dec	24.965595	24.99290330459016	Primary exposure time	0.000000	3.1
Pointing Roll	54.815343	55.02299135786991			
SIM focus pos (mm)	-0.782348	-0.7809083437167272			
SIM defocus (mm)	0	0.001439871863259334			
SIM translation stage pos (mm)	-230.632463	-230.6305996661941			
SIM translation stage offset (mm)	-2.96	-2.961853336735572			
Observation start time	186296799.184000	186295751.15491			
Observation start date	2003-11-27T05:05:35	2003-11-27T04:49:11			
Observation end time	186312450.184000	186313426.76817			
Observation end date	2003-11-27T09:26:26	2003-11-27T09:43:46			
Read mode	TIMED	TIMED			

2.3 Aspect



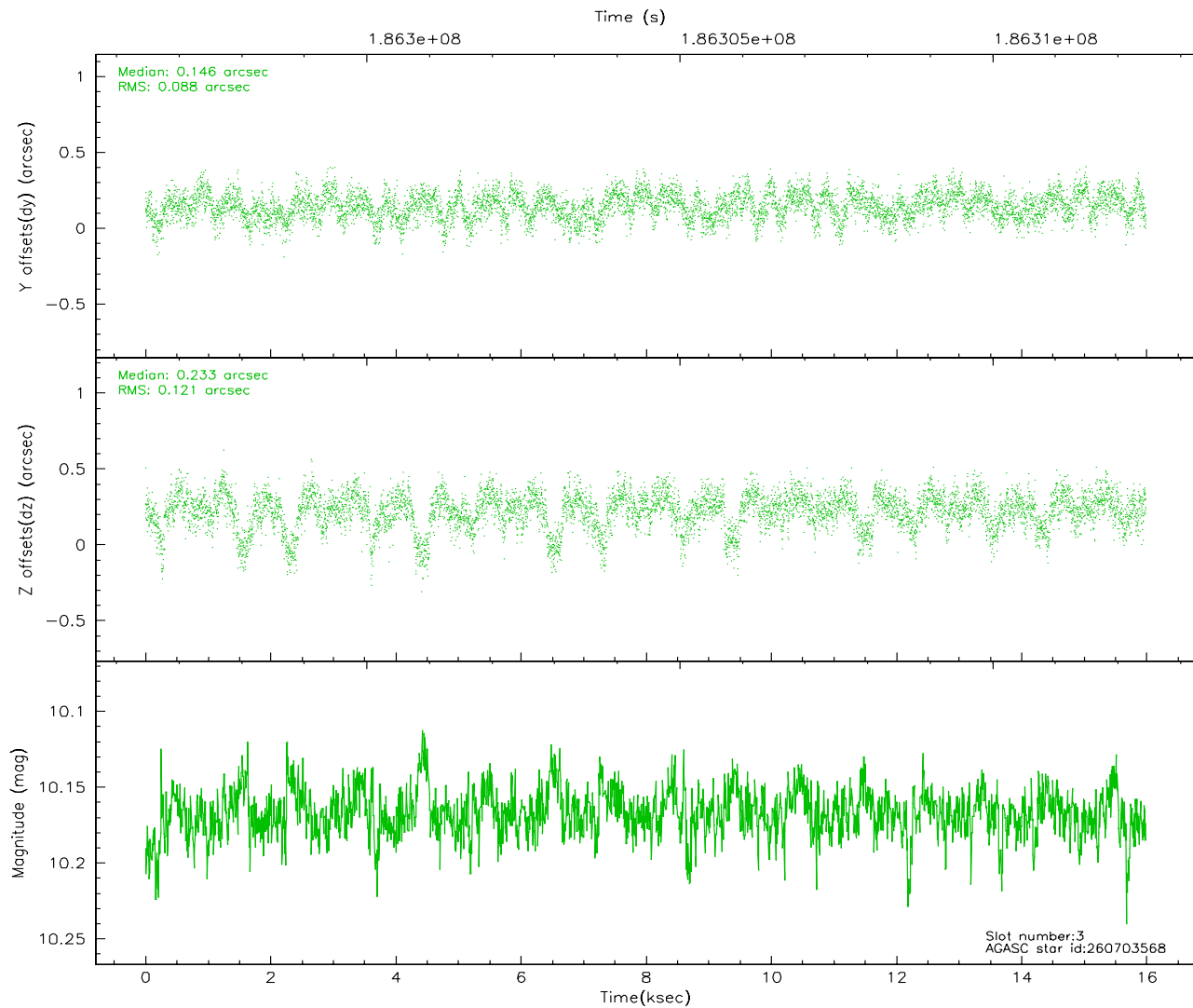
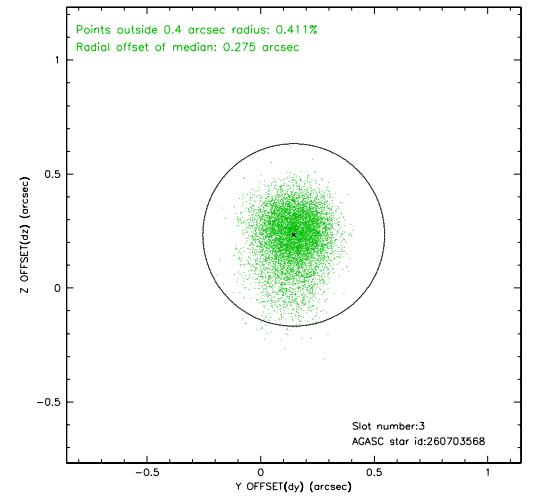
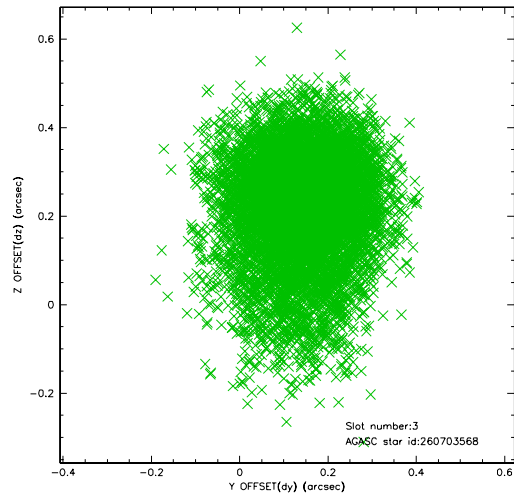


Slot Statistics

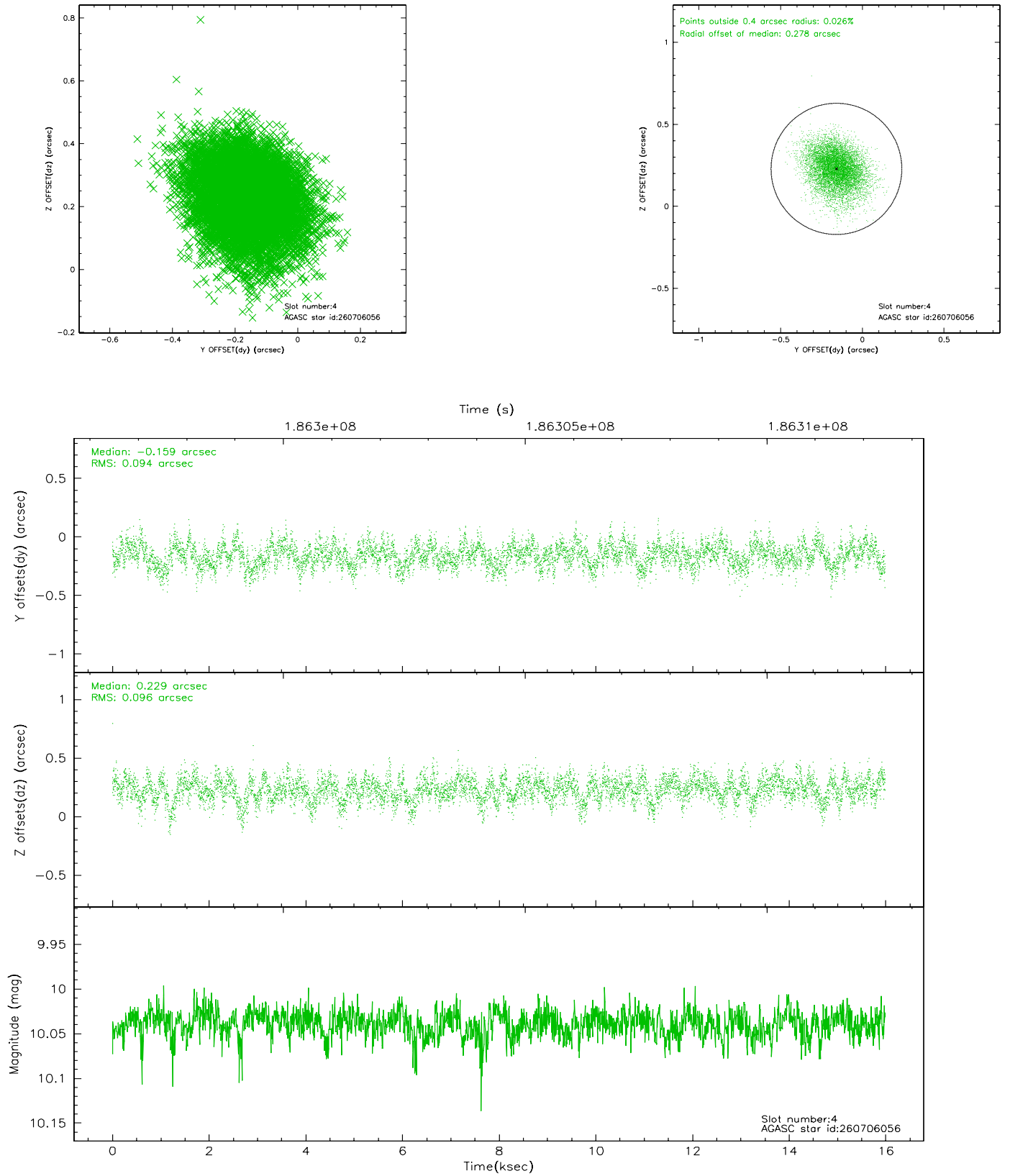
slot	status	id	mag	n_pts	med_dy	med_dz	dr1	dr2	ra	dec	mean_y	mean_z
0	FID	ACIS-I-1	7.24	3900	0.046	0.002	0.011	0.017	0.000000	0.000000	932.52	-894.58
1	FID	ACIS-I-5	7.23	3900	-0.147	0.075	0.011	0.019	0.000000	0.000000	-1815.58	1002.88
2	FID	ACIS-I-6	7.26	3900	0.009	-0.003	0.018	0.026	0.000000	0.000000	397.79	1647.58
3	GUIDE	260703568	10.17	7790	0.146	0.233	0.153	0.268	186.567794	24.177002	-2053.32	-2013.59
4	GUIDE	260706056	10.04	7792	-0.159	0.229	0.143	0.234	186.811242	24.885942	489.79	-1189.43
5	GUIDE	260727904	6.68	7799	-0.039	-0.073	0.085	0.151	185.545112	24.773863	-2217.77	1963.58
6	GUIDE	260714336	7.25	7799	0.117	-0.160	0.083	0.128	185.874901	24.593254	-2134.18	706.94
7	GUIDE	260703392	10.47	7790	-0.069	-0.218	0.163	0.262	186.247247	25.669619	1735.13	1937.75

2.4 Star Slots

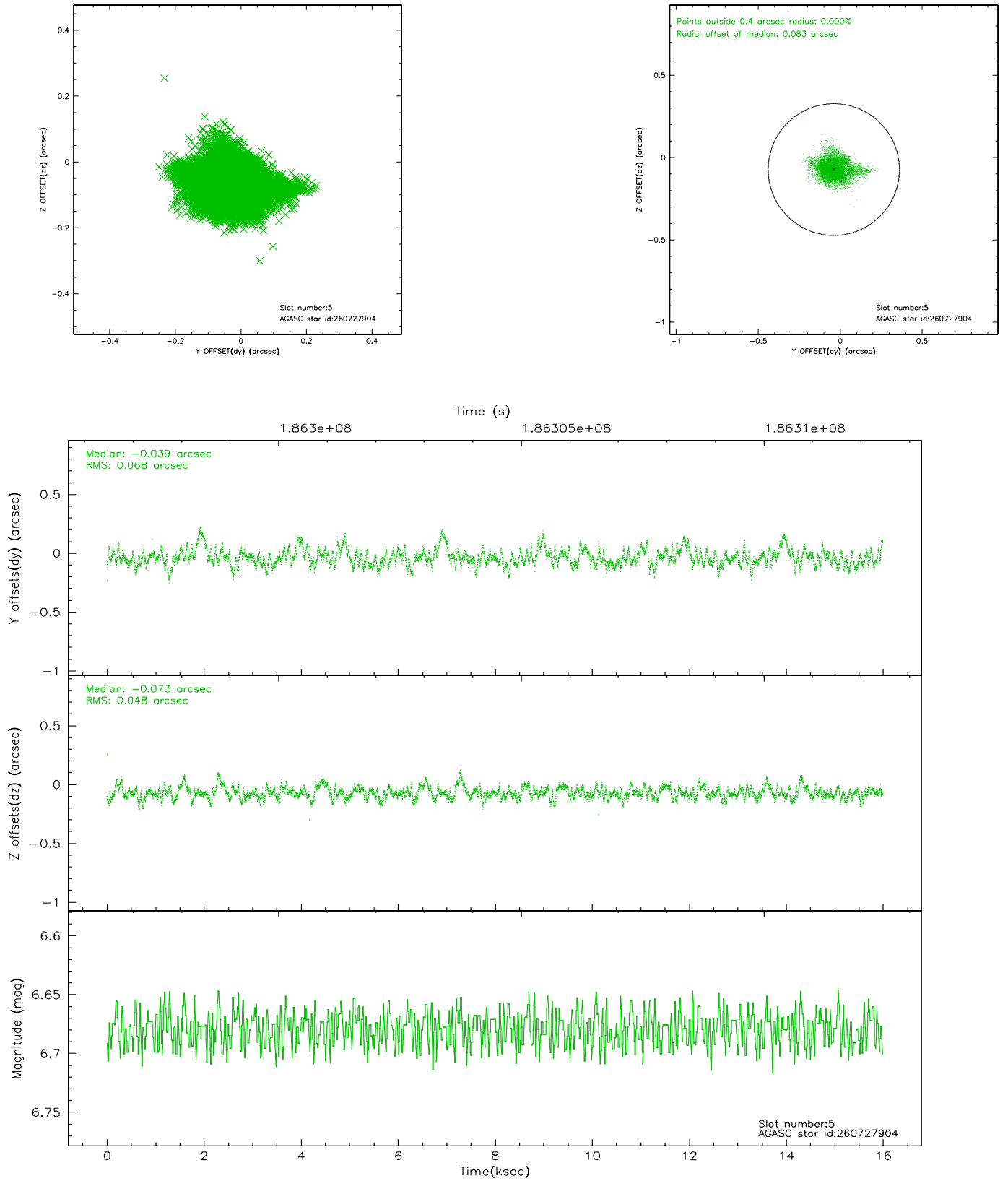
2.4.1 Slot 3



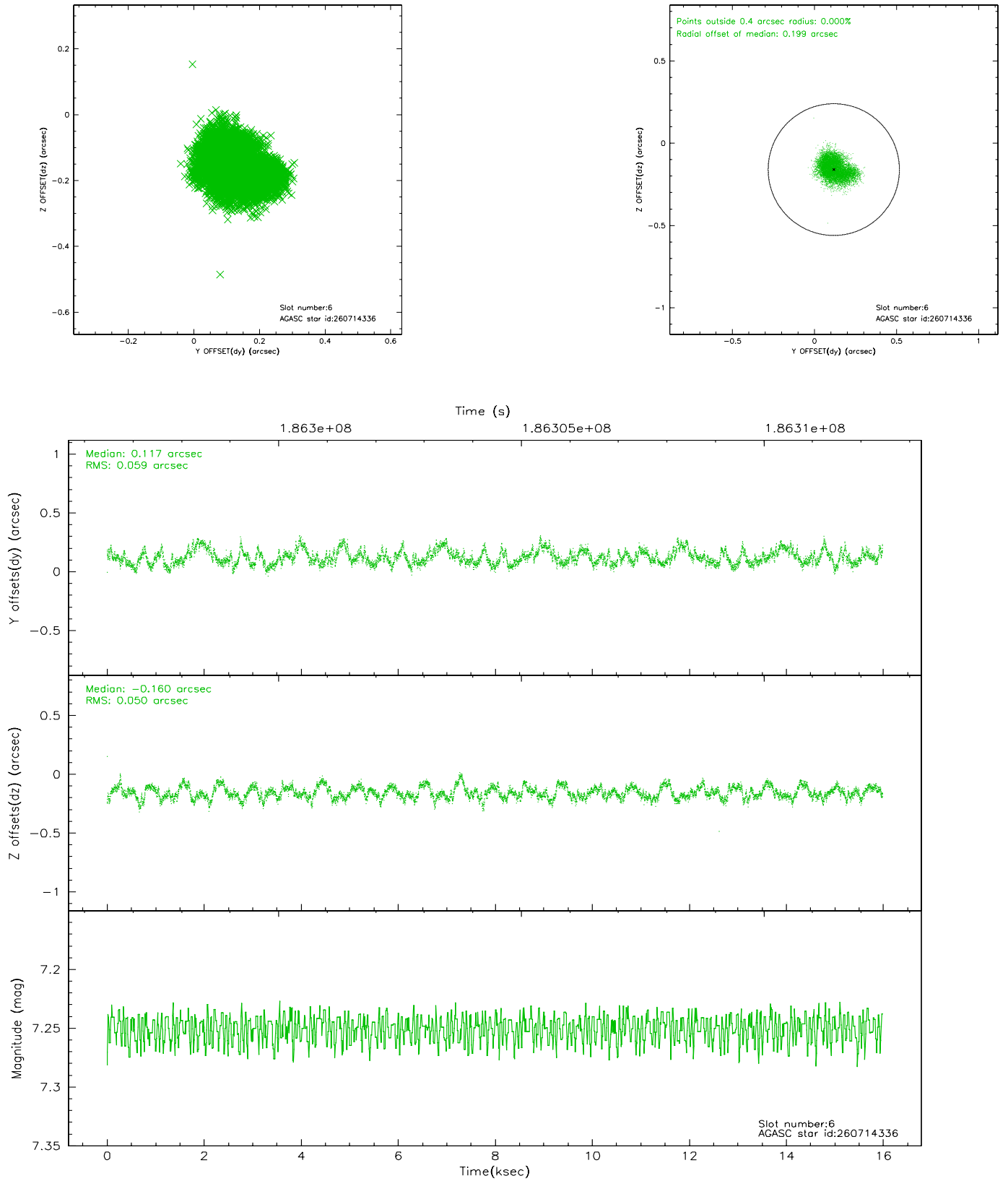
2.4.2 Slot 4



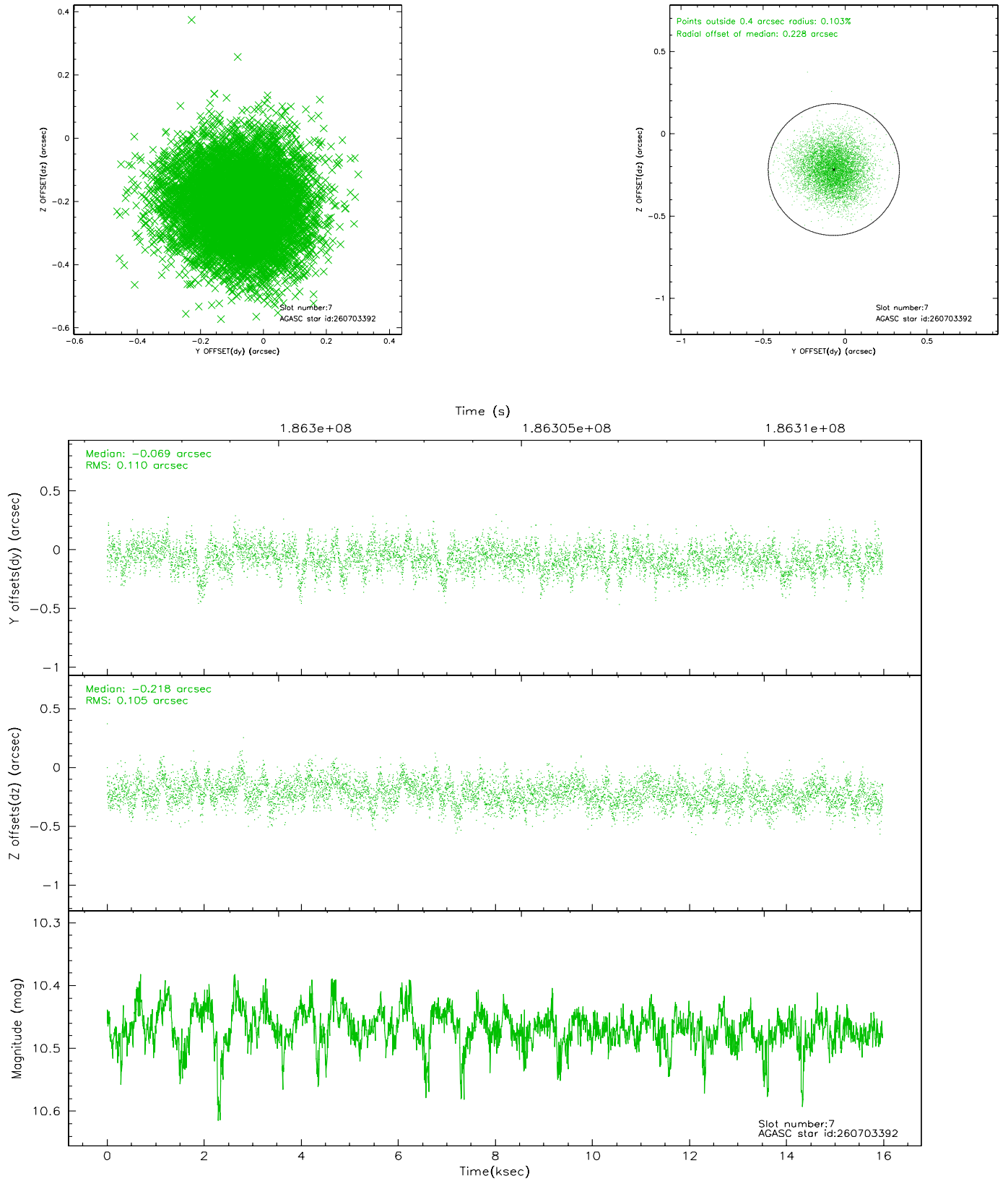
2.4.3 Slot 5



2.4.4 Slot 6

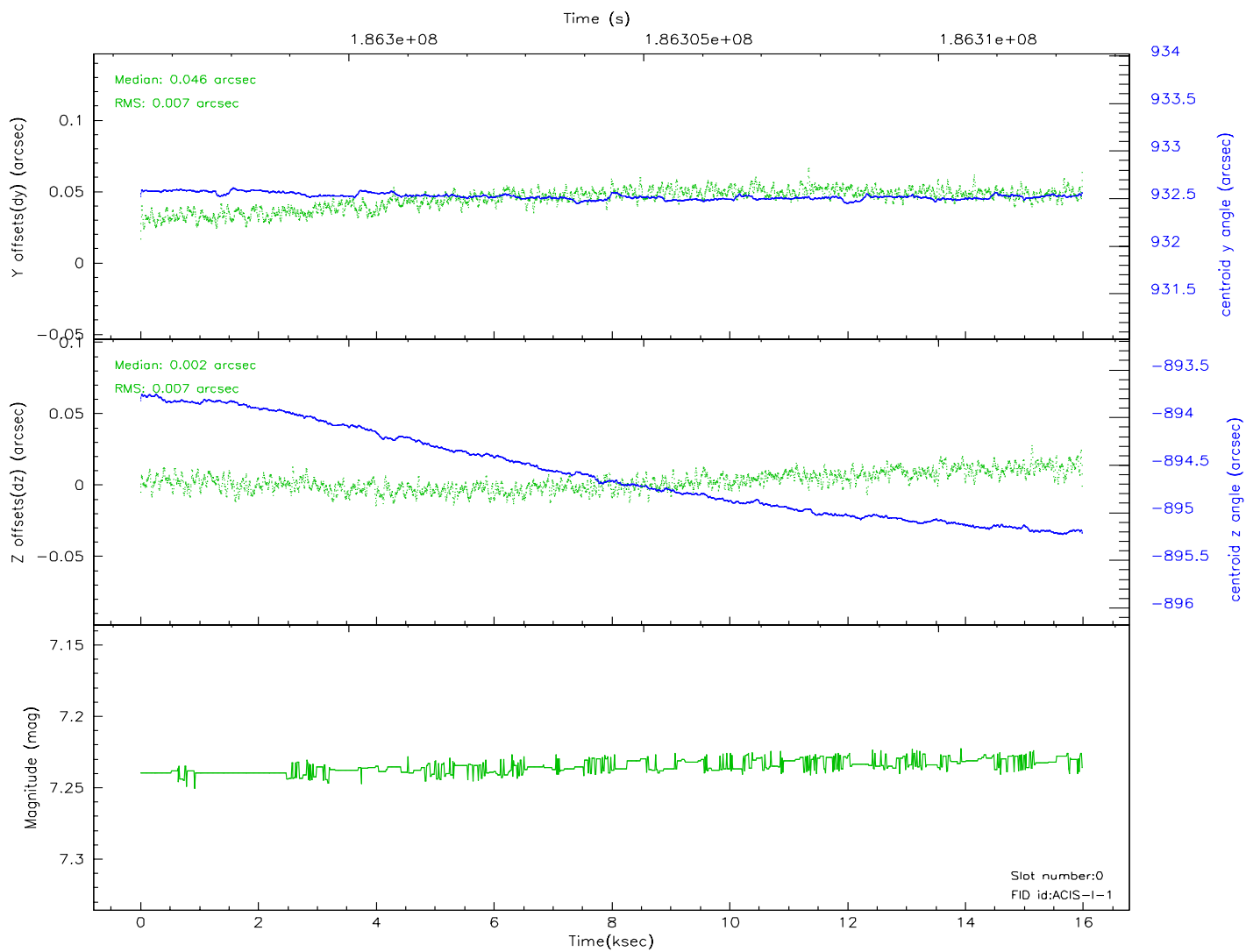
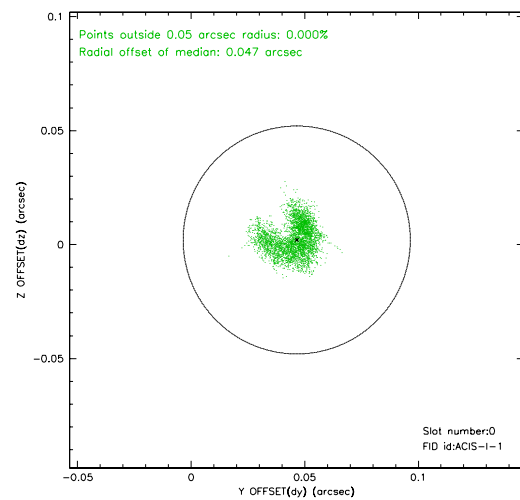
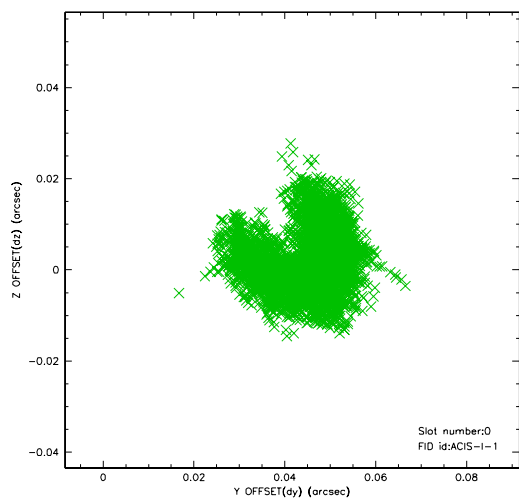


2.4.5 Slot 7

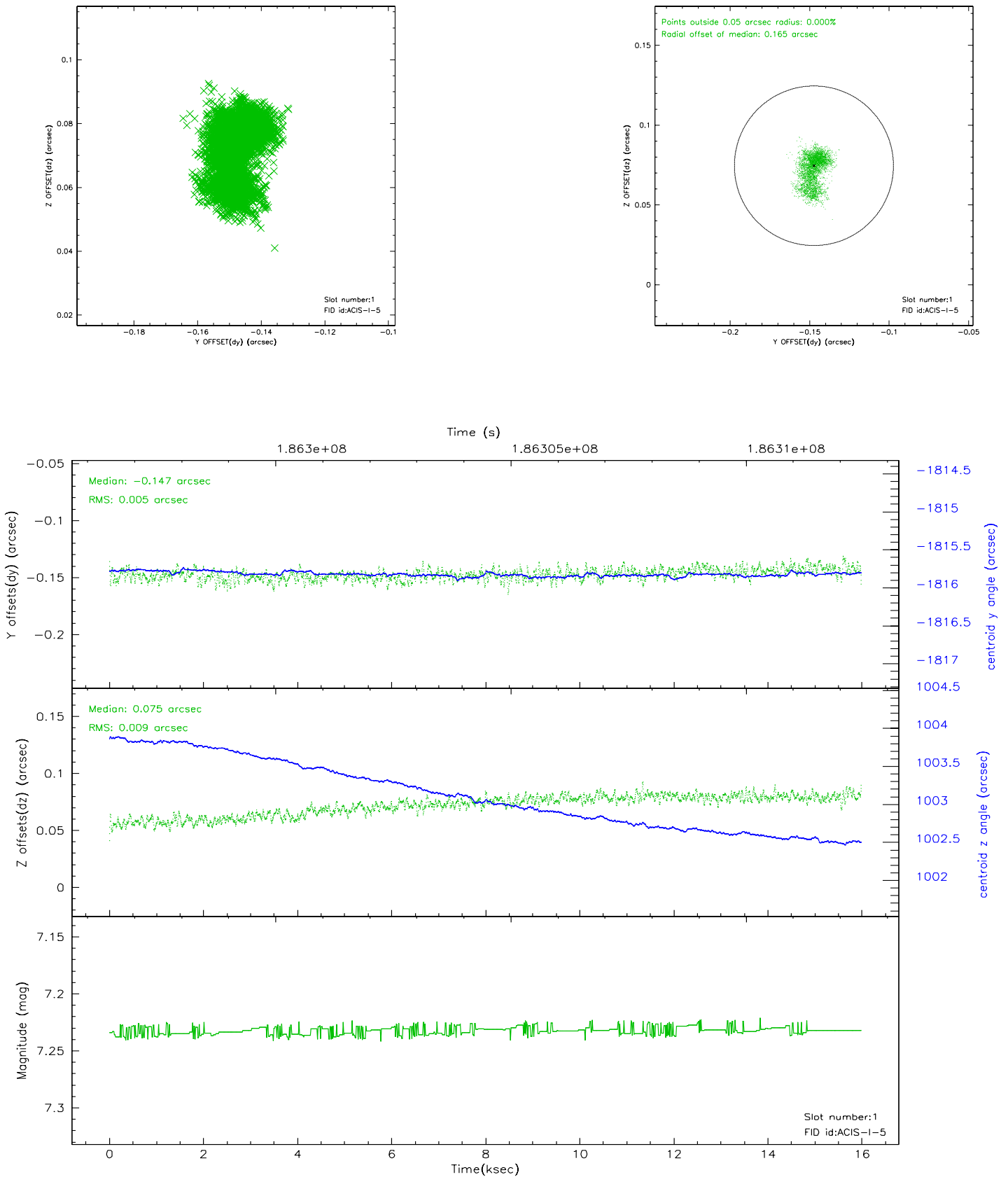


2.5 FID Slots

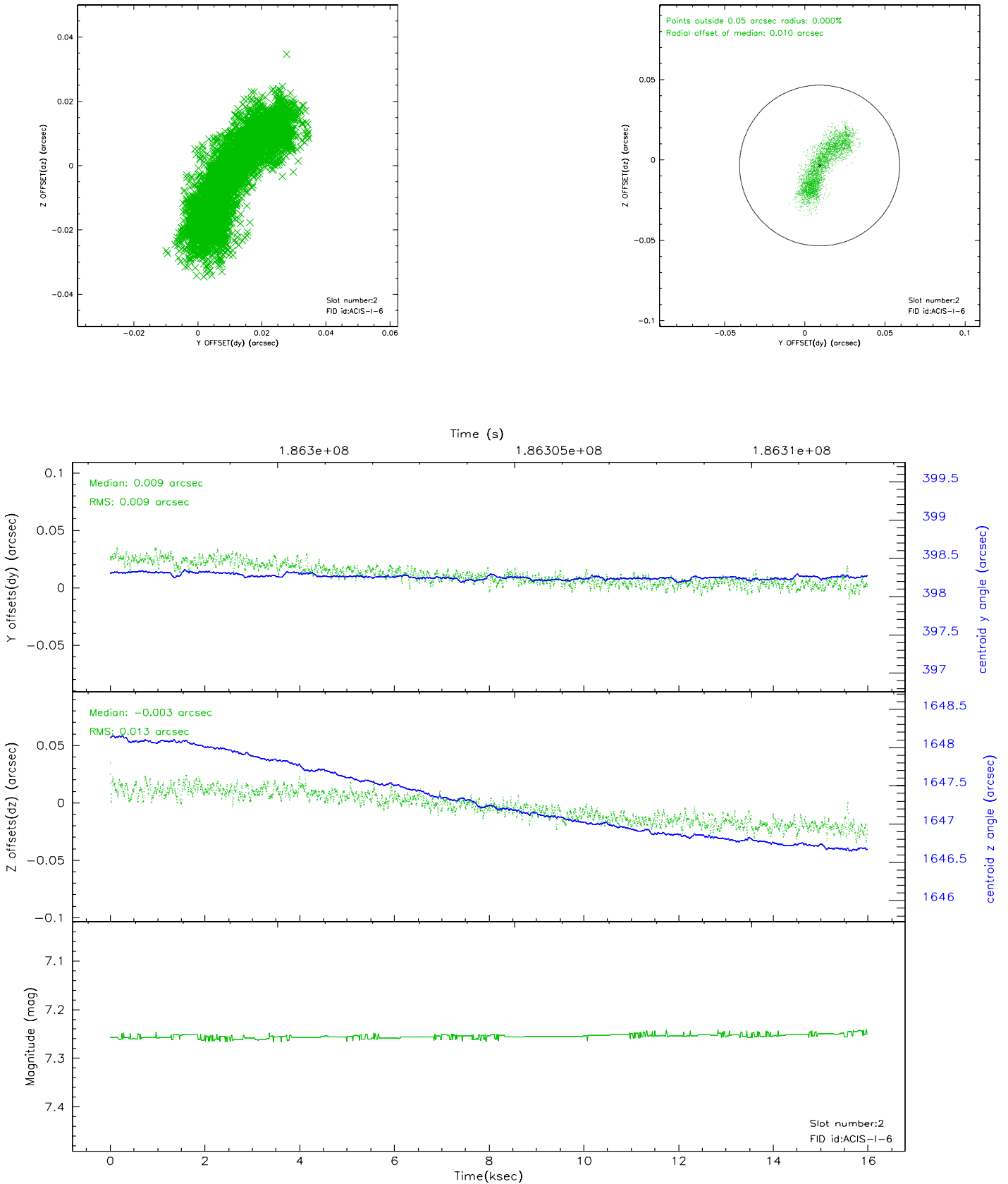
2.5.1 Slot 0



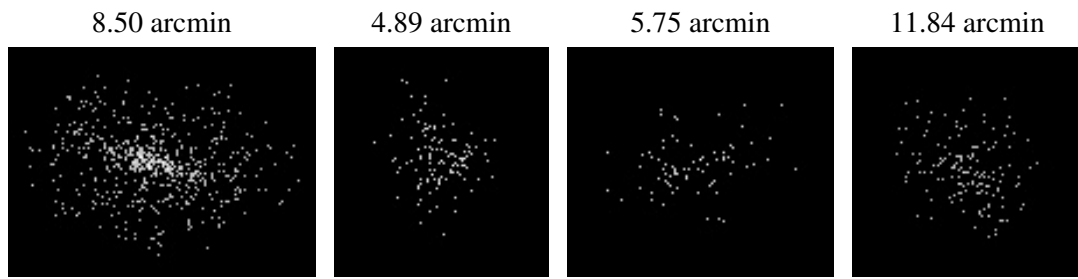
2.5.2 Slot 1



2.5.3 Slot 2



3 Point Sources



A Summary

A.1 Status

V&V Scientist	Jen Lauer
V&V Date (YYYY-MM-DD)	2006.06.27
V&V Edition	1
V&V Disposition and Status	OK
V&V Charge Time	15.779

A.2 Comments