

# V&V Reference Report

## L2 ASCDS Version : 7.6.8.1

Observation 3983 - L2 Version 001  
Chandra X-Ray Center

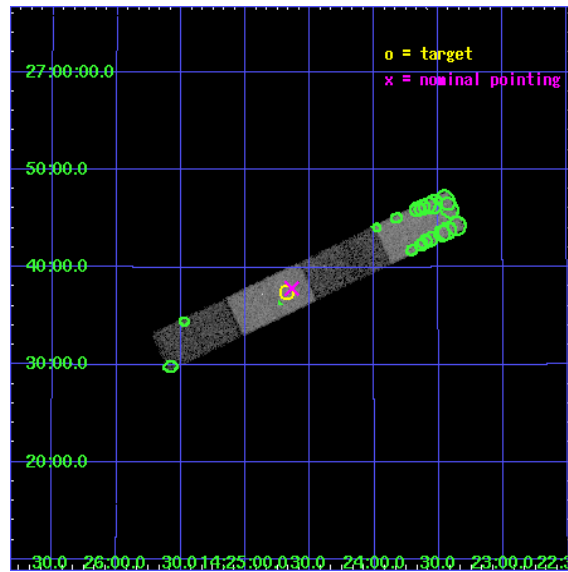
L2 Processing Date : Aug 4 2006

## Contents

<b>1</b>	<b>Front</b>	<b>2</b>
<b>2</b>	<b>OBI</b>	<b>3</b>
2.1	OBI . . . . .	3
2.1.1	Images . . . . .	3
2.1.2	Bias . . . . .	3
2.1.3	Parameters . . . . .	4
2.1.4	Events . . . . .	4
2.2	Compared Parameters . . . . .	5
2.3	Aspect . . . . .	6
2.4	Star Slots . . . . .	9
2.4.1	Slot 3 . . . . .	9
2.4.2	Slot 4 . . . . .	10
2.4.3	Slot 5 . . . . .	11
2.4.4	Slot 6 . . . . .	12
2.4.5	Slot 7 . . . . .	13
2.5	FID Slots . . . . .	14
2.5.1	Slot 0 . . . . .	14
2.5.2	Slot 1 . . . . .	15
2.5.3	Slot 2 . . . . .	16
<b>3</b>	<b>Point Sources</b>	<b>17</b>
<b>A</b>	<b>Summary</b>	<b>18</b>
A.1	Status . . . . .	18
A.2	Comments . . . . .	18

# 1 Front

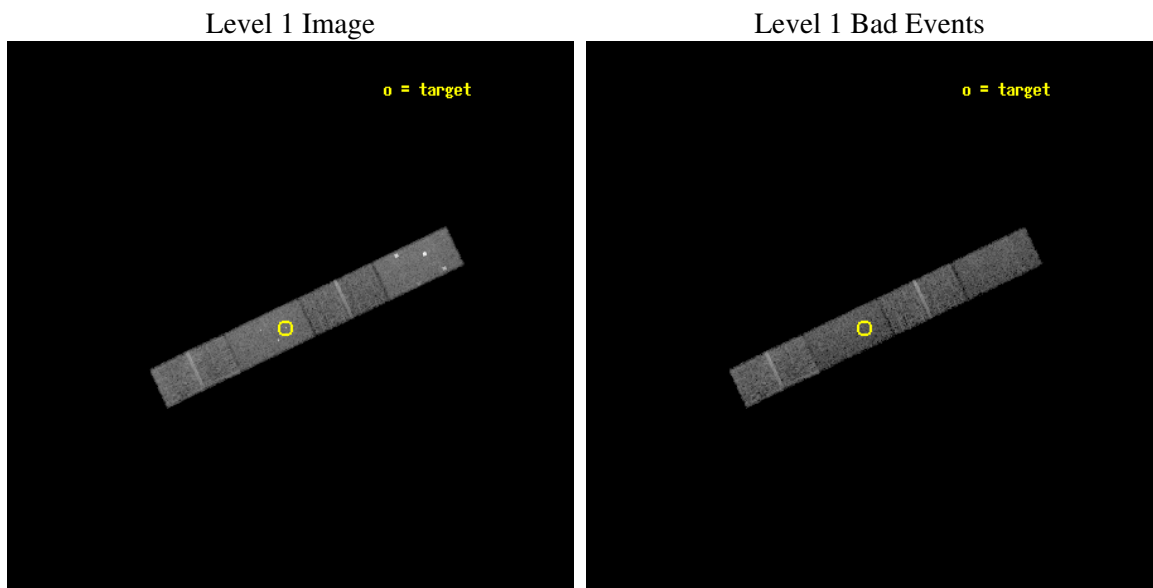
seq_num	700662
obs_id	3983
title	THE X-RAY JETS, CORES, AND GAS IN FRI RADIO GALAXIES
observer	Prof Diana Worrall
object	B2 1422+26B
dtcycle	0
cycle	P
ra_targ	216.16875
dec_targ	26.625139
ra_nom	216.15997963662
dec_nom	26.630784003696
roll_nom	154.50528078095
revision	3
ontime	10589.299925745
livetime	10339.68770032
ontime5	10589.299925745
ontime6	10589.299925745
ontime7	10589.299925745
ontime8	10589.299925745
l2events	50888



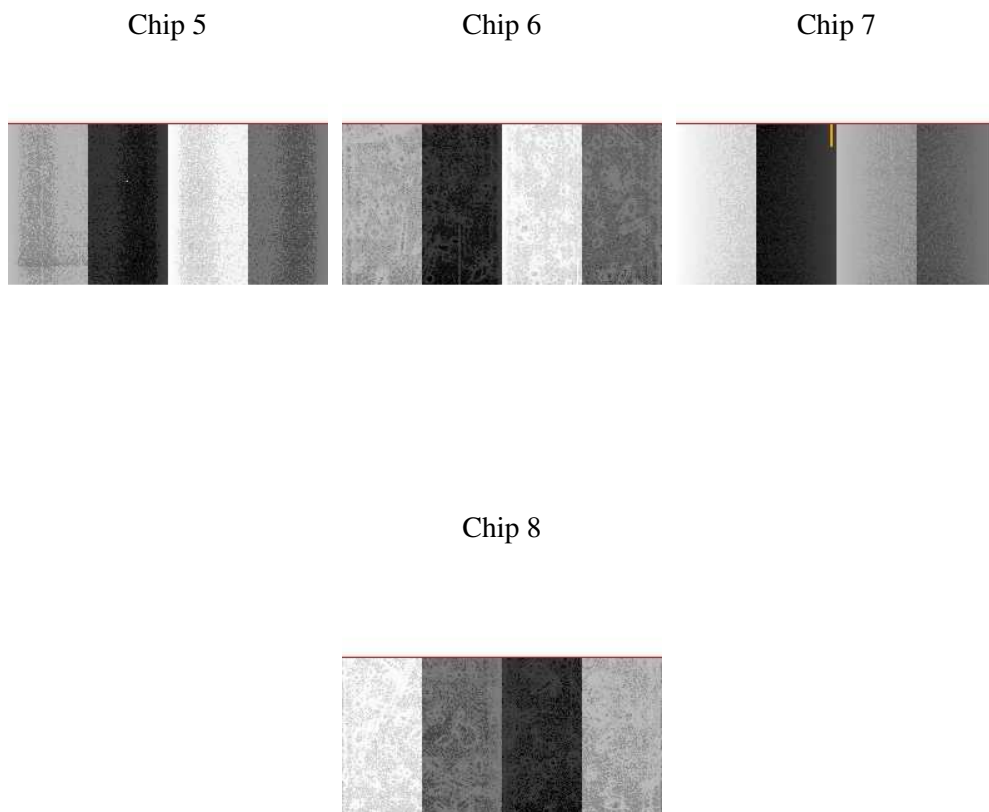
## 2 OBI

### 2.1 OBI

#### 2.1.1 Images



#### 2.1.2 Bias



### 2.1.3 Parameters

obi_num	0
ascdsver	7.6.8.1
caldsver	3.2.2
date	2006-08-04T18:03:28
revision	3

sched_exp_time	10038.755000
ontime	10592.382757336
ontime5	10592.382757336
ontime6	10592.382737428
ontime7	10592.382757336
ontime8	10592.382737428
l1events	186298

### 2.1.4 Events

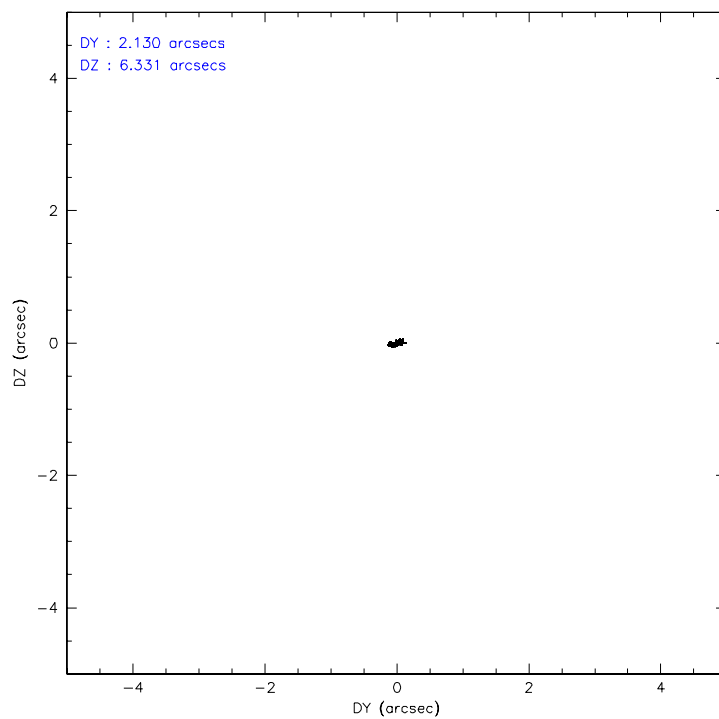
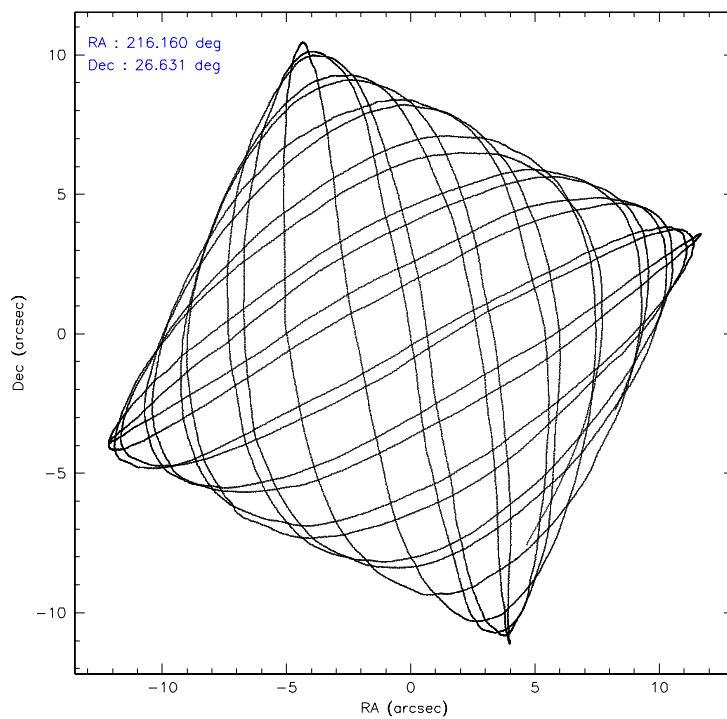
	ccd 5	ccd 6	ccd 7	ccd 8
level 1 events	57839	36501	46402	45556
rejected events	26591	30932	26119	36057
rejected %	45%	84%	56%	79%

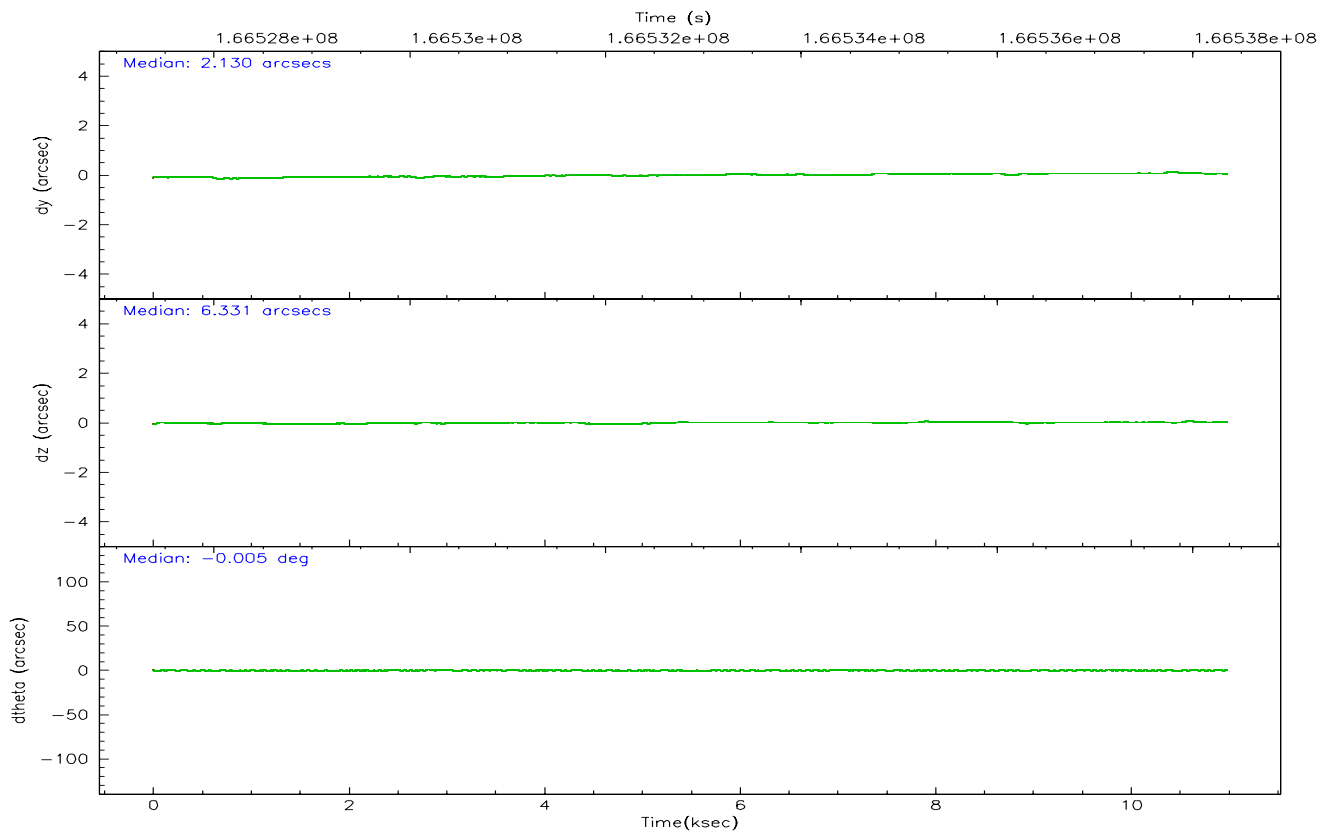
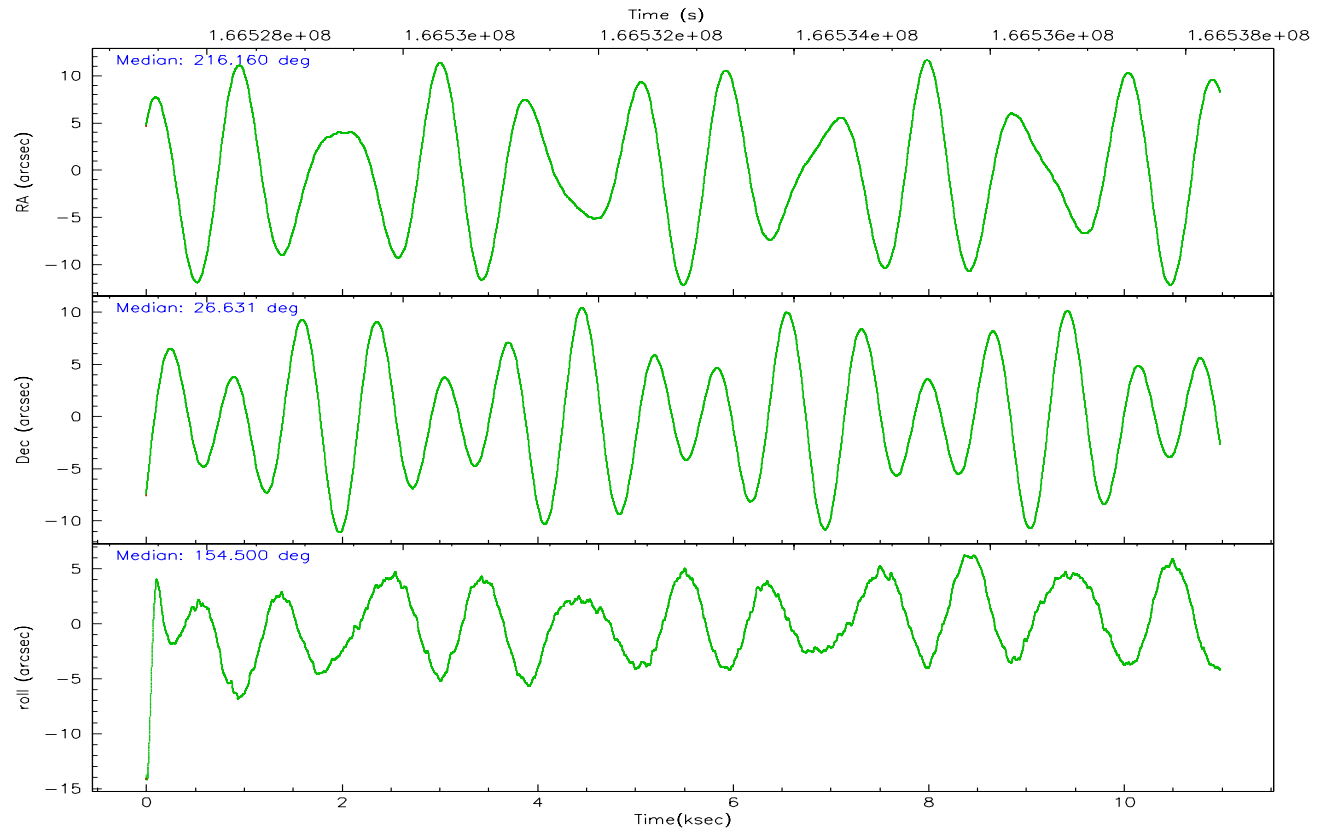
	ccd 5	ccd 6	ccd 7	ccd 8
grade 0 events	10193	2647	1866	3404
	17%	7%	4%	7%
grade 1 events	112	9	35	18
	0%	0%	0%	0%
grade 2 events	7392	964	4976	1886
	12%	2%	10%	4%
grade 3 events	621	547	1376	1070
	1%	1%	2%	2%
grade 4 events	621	562	1297	960
	1%	1%	2%	2%
grade 5 events	2410	1493	3068	1887
	4%	4%	6%	4%
grade 6 events	12426	850	10771	2180
	21%	2%	23%	4%
grade 7 events	24064	29429	23013	34151
	41%	80%	49%	74%

## 2.2 Compared Parameters

Parameter	Planned	Actual	Parameter	Planned	Actual
Instrument	ACIS	ACIS	Obspar format version number	6	6
Detector	ACIS-5678	ACIS-5678	Obspar file type	PREDICTED	ACTUAL
Grating	NONE	NONE	Obspar update status	NONE	UPDATED
Data mode	VFAINT	VFAINT	On-chip summing requested	N	N
Observation mode	POINTING	POINTING	Subarray requested	1/2	1/2
Pointing RA	216.190283	216.1599796366229	Subarray start row	0	257
Pointing Dec	26.633274	26.630784003696	Subarray row count	1024	512
Pointing Roll	154.335085	154.5052807809455	Alternating exposures requested	N	N
SIM focus pos (mm)	-0.684267	-0.6828225247311905	Primary exposure time	0.000000	1.7
SIM defocus (mm)	0	0.001444936568705701			
SIM translation stage pos (mm)	-190.132523	-190.1425803651734			
SIM translation stage offset (mm)	0	0.01005778216563158			
Observation start time	166528319.184000	166526977.6229			
Observation start date	2003-04-12T09:50:55	2003-04-12T09:29:37			
Observation end time	166538357.184000	166538672.3609			
Observation end date	2003-04-12T12:38:13	2003-04-12T12:44:32			
Read mode	TIMED	TIMED			

## 2.3 Aspect





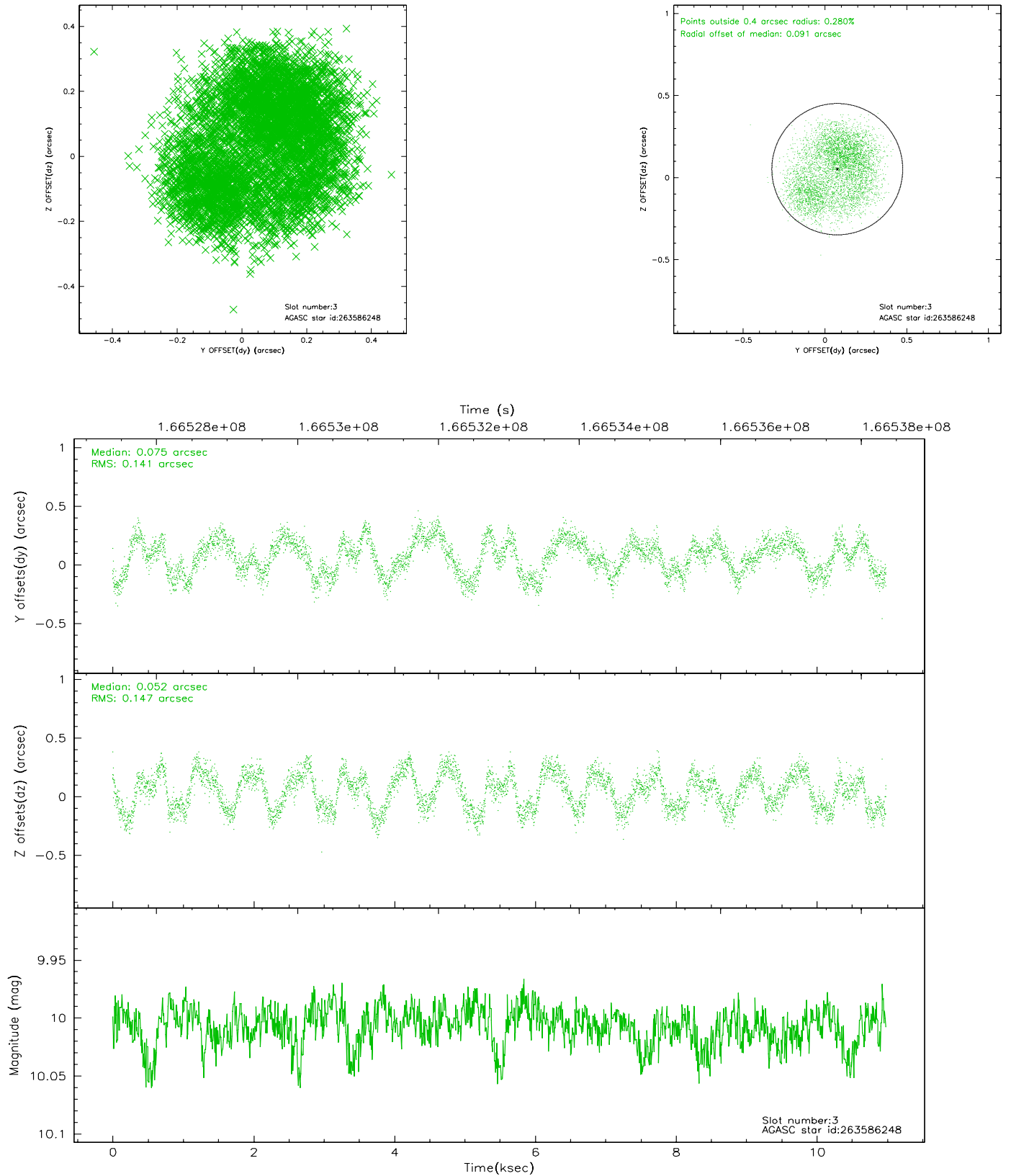
### Slot Statistics

slot	status	id	mag	n_pts	med_dy	med_dz	dr1	dr2	ra	dec	mean_y	mean_z
0	FID	ACIS-S-2	7.12	2680	-0.038	0.025	0.007	0.011	0.000000	0.000000	-754.74	-1727.42
1	FID	ACIS-S-4	7.21	2680	-0.043	0.012	0.005	0.008	0.000000	0.000000	2158.28	180.63
2	FID	ACIS-S-5	7.24	2680	0.049	-0.028	0.006	0.010	0.000000	0.000000	-1806.93	174.71
3	GUIDE	263586248	10.01	5358	0.075	0.052	0.227	0.321	216.882223	26.641604	-1990.82	-996.32
4	GUIDE	263586520	9.47	5360	0.061	0.056	0.140	0.240	216.777743	26.982936	-1151.56	-1954.38
5	GUIDE	263589208	6.74	5360	-0.198	0.098	0.076	0.114	215.967797	27.270750	1635.89	-1760.26
6	GUIDE	263592008	9.07	5353	0.130	-0.082	0.082	0.140	216.283033	26.162303	-1003.90	1398.39
7	GUIDE	263592472	7.11	5359	-0.074	-0.116	0.072	0.111	216.477415	26.265268	-1408.85	792.48

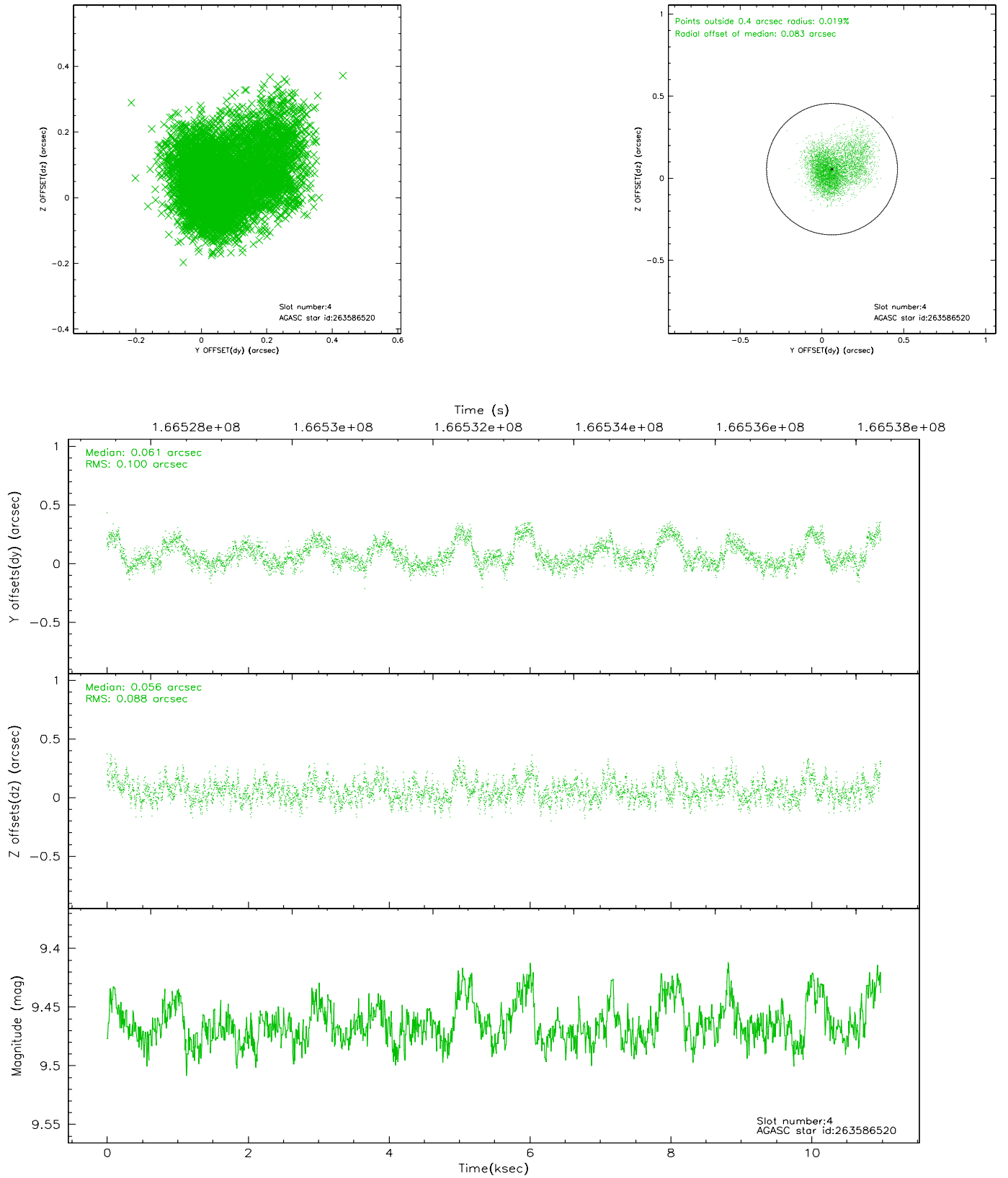


## 2.4 Star Slots

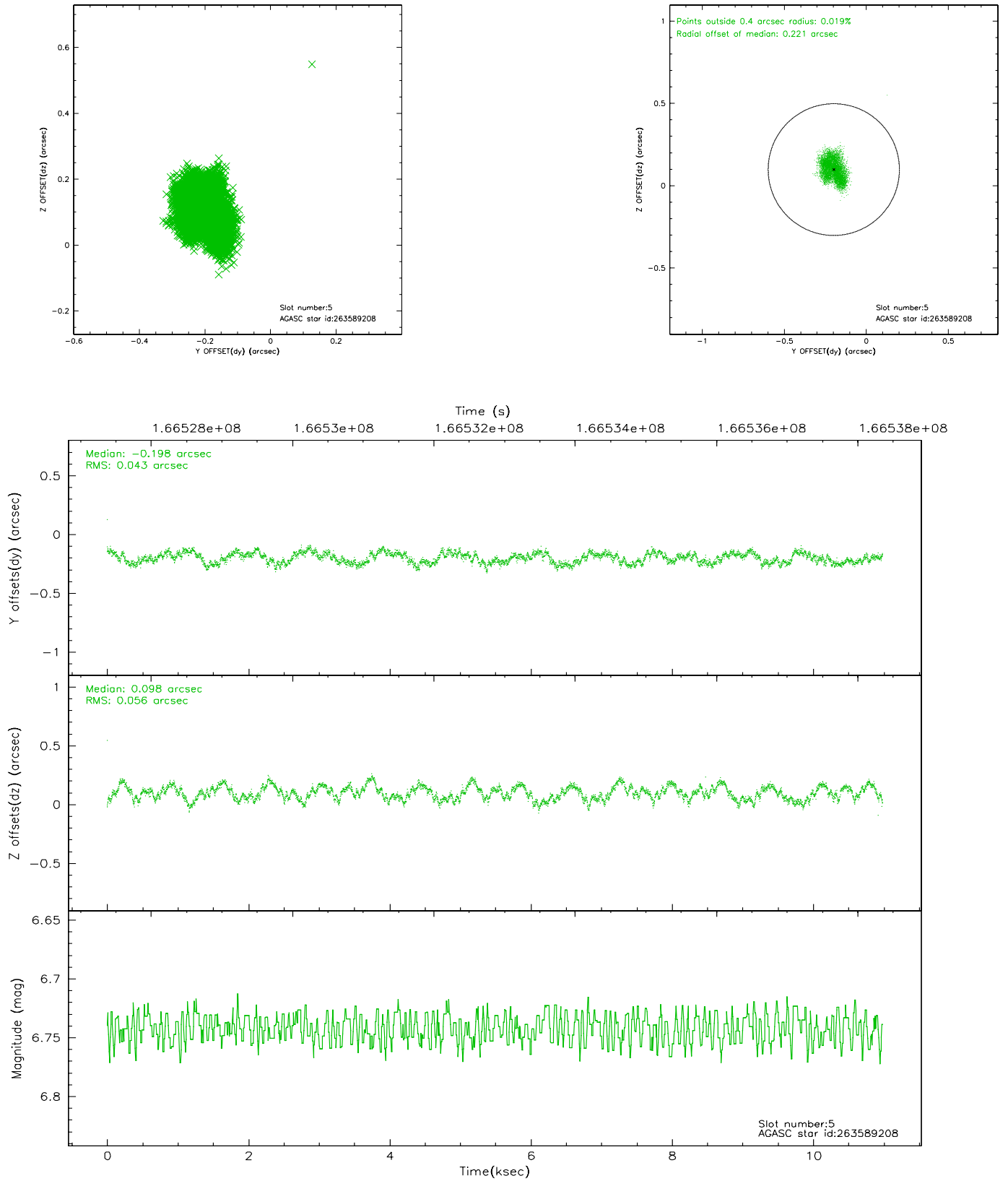
### 2.4.1 Slot 3



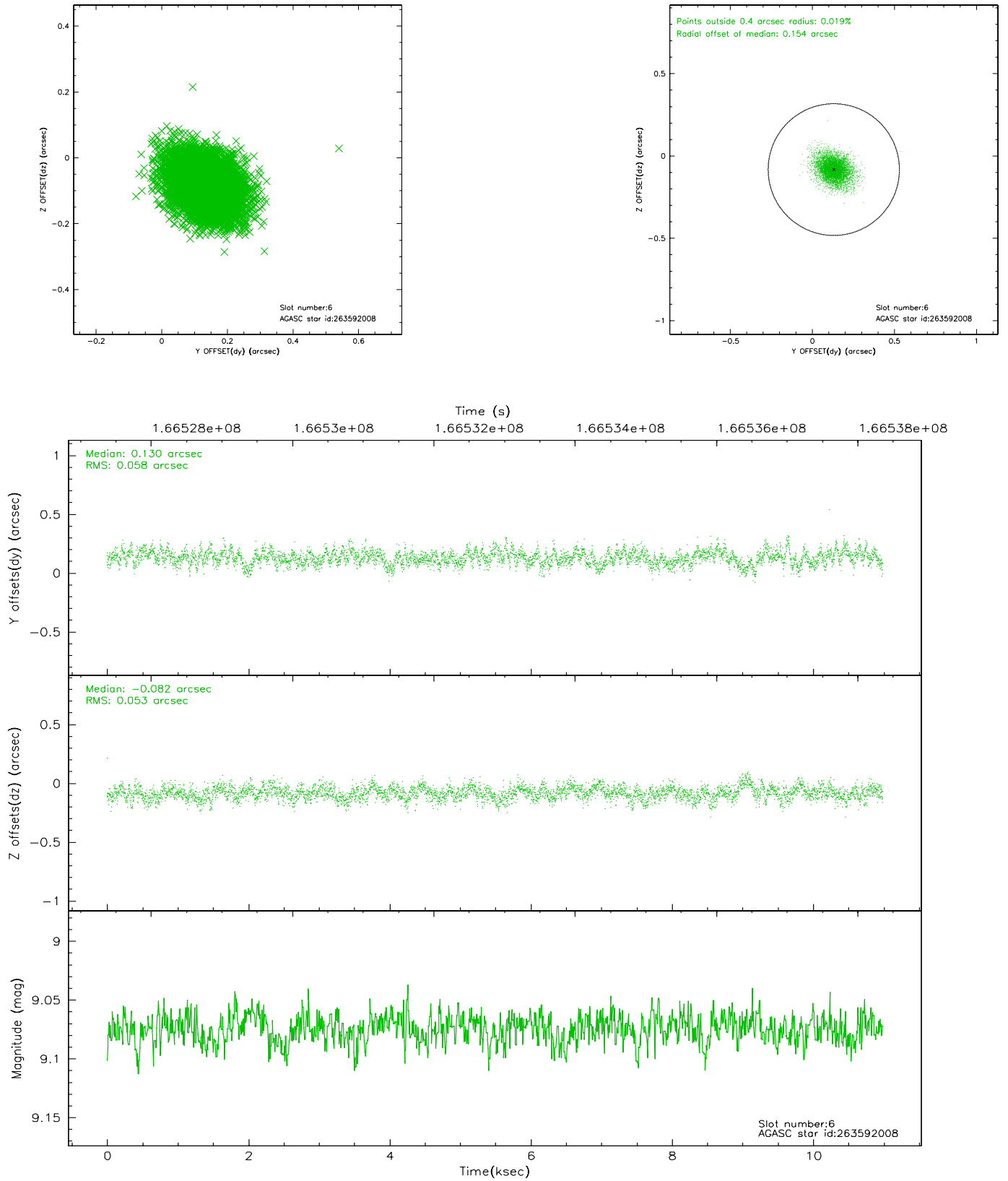
## 2.4.2 Slot 4



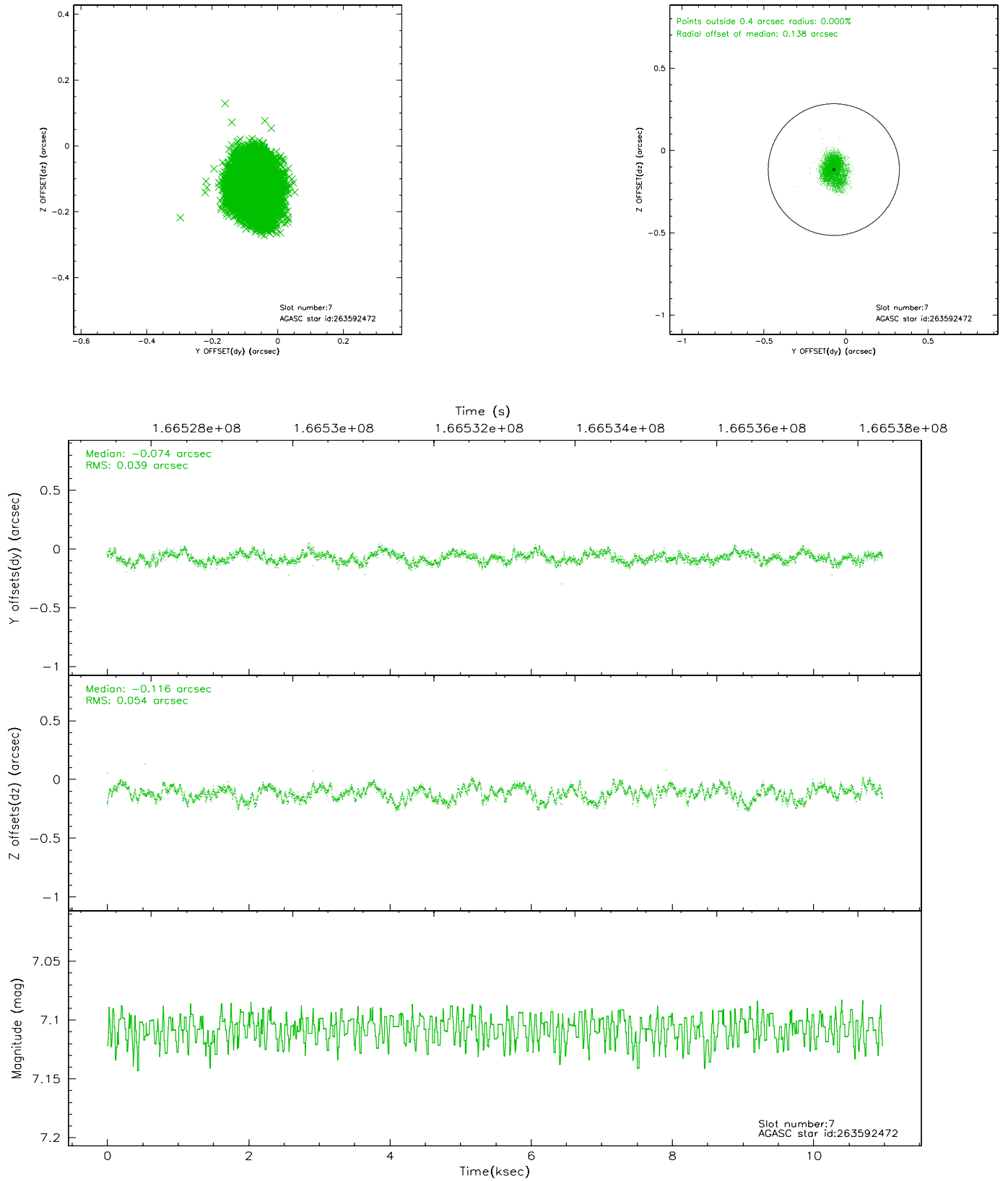
### 2.4.3 Slot 5



## 2.4.4 Slot 6

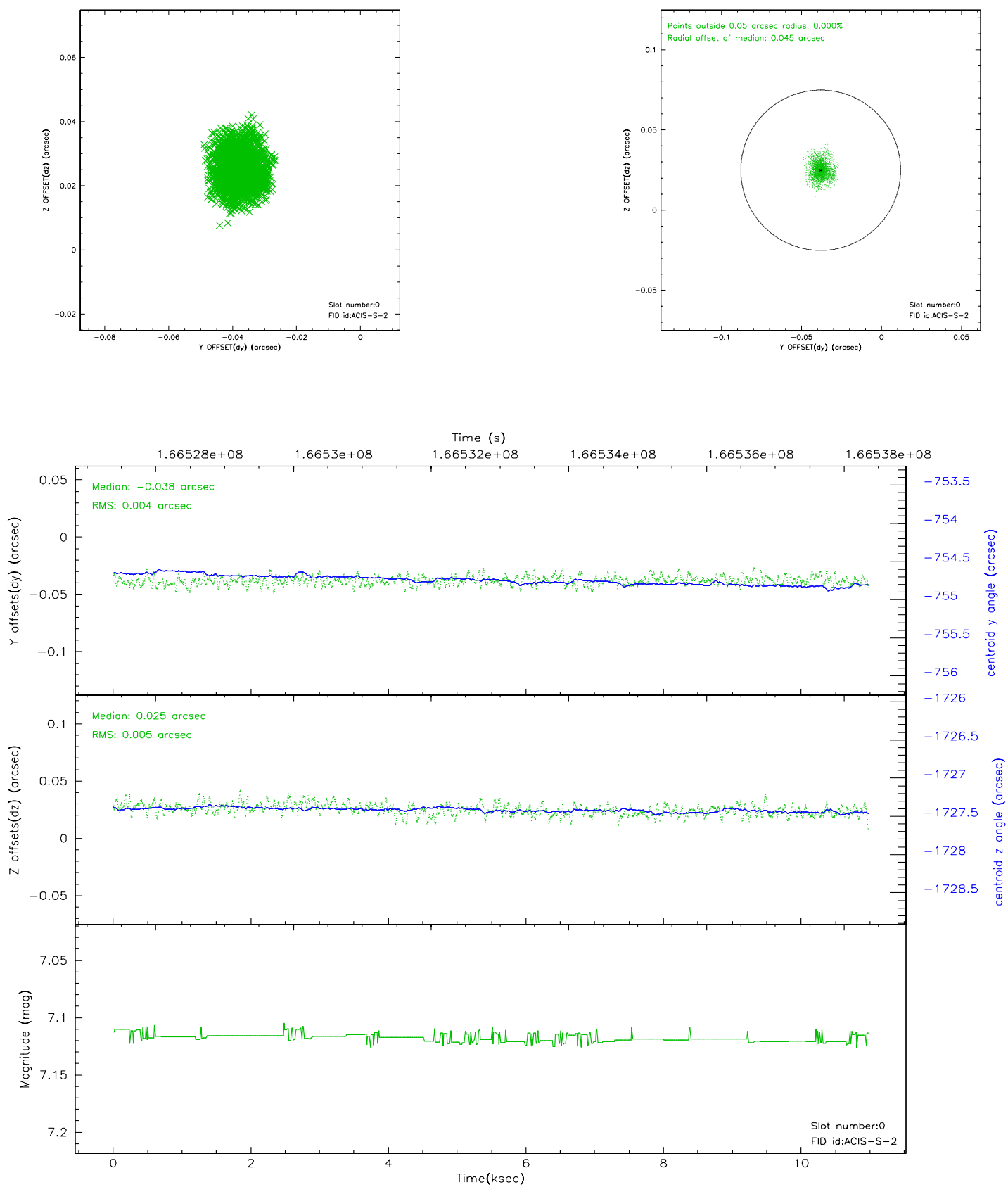


## 2.4.5 Slot 7

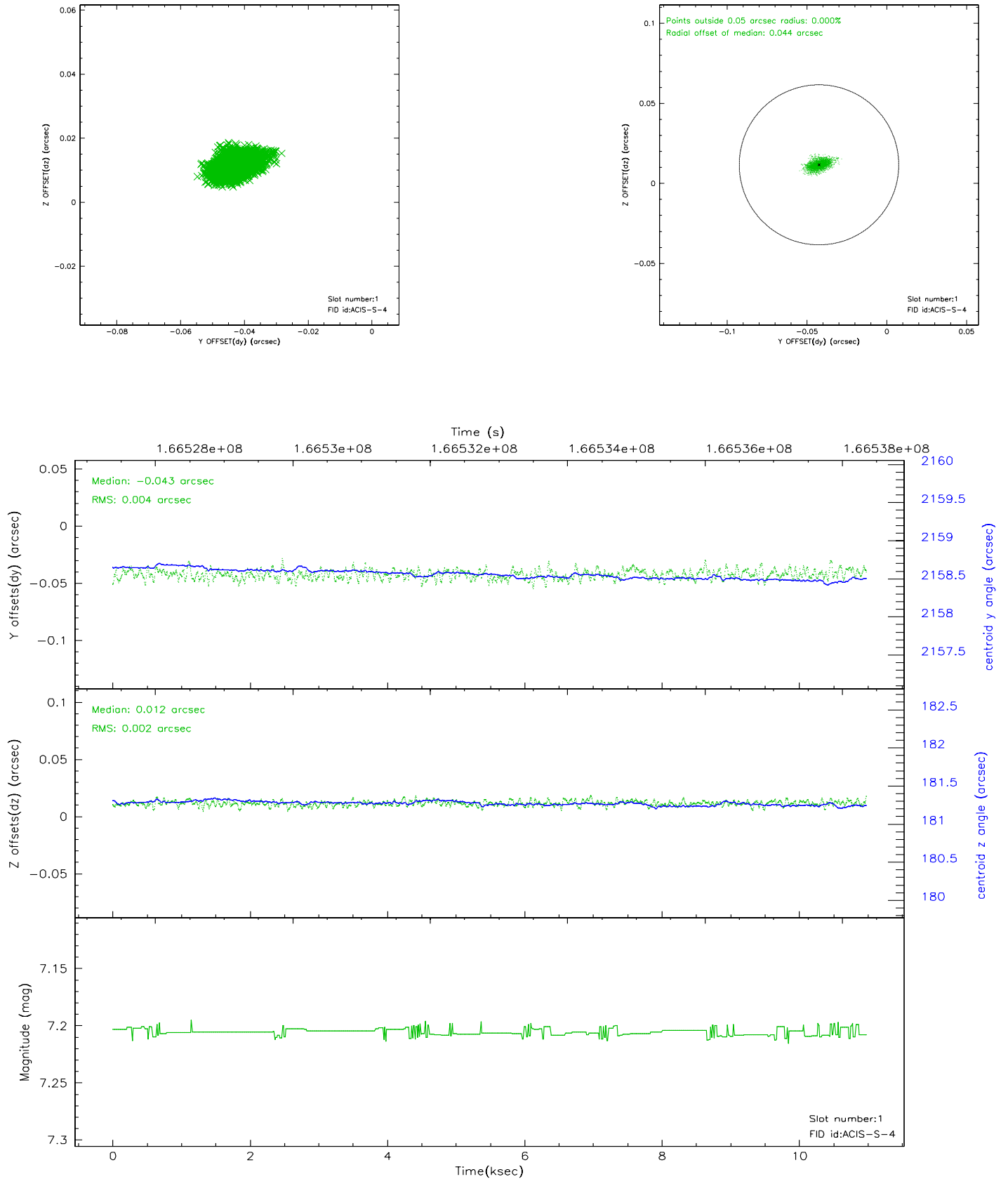


## 2.5 FID Slots

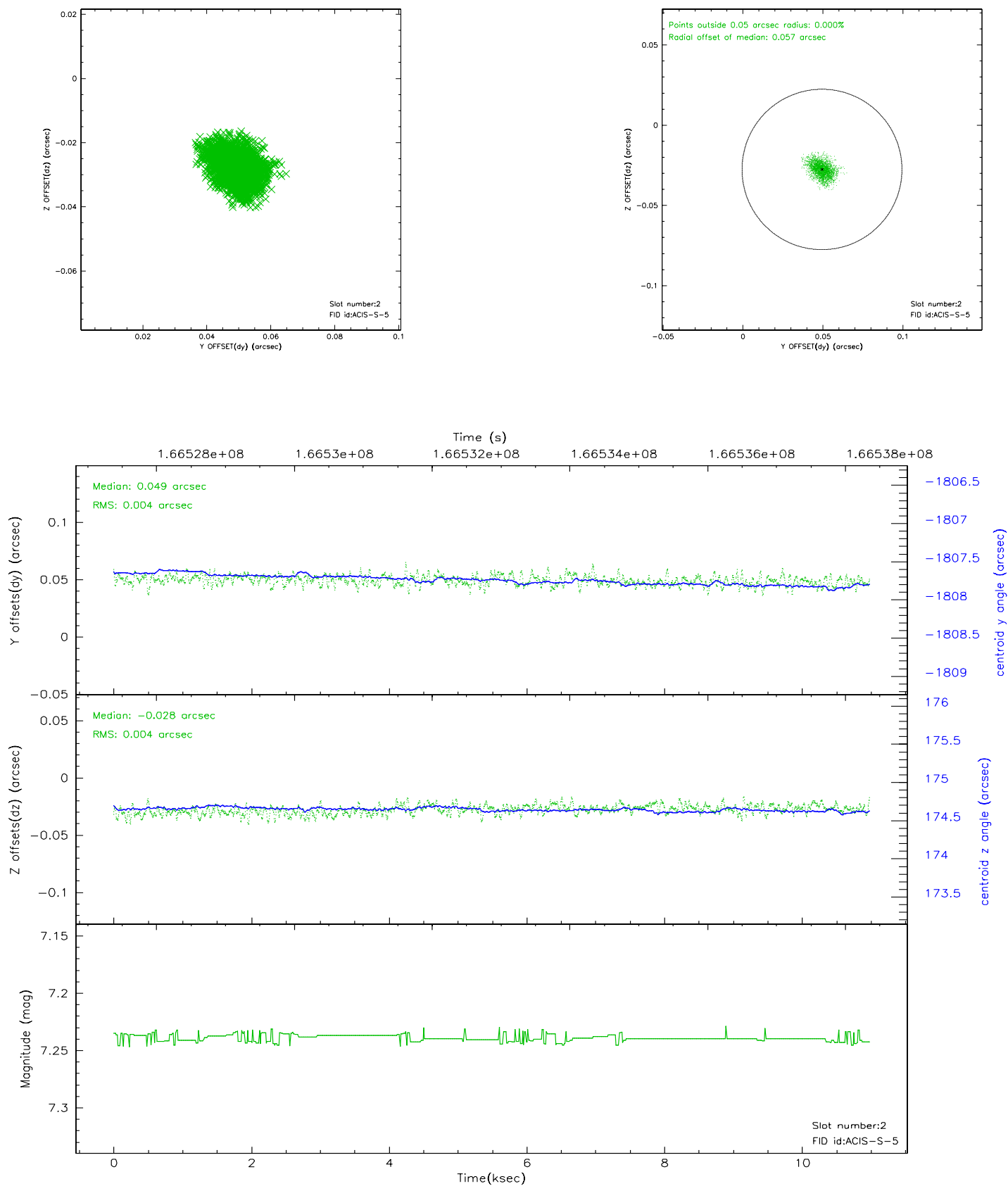
### 2.5.1 Slot 0



## 2.5.2 Slot 1

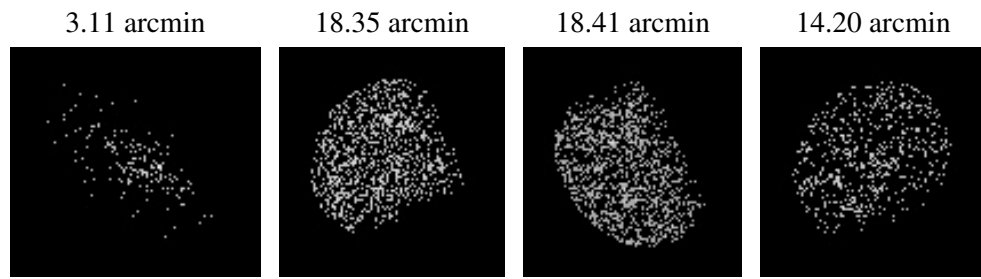


### 2.5.3 Slot 2





### 3 Point Sources



## A Summary

### A.1 Status

V&V Scientist	Beth Sundheim
V&V Date (YYYY-MM-DD)	2006.08.04
V&V Edition	1
V&V Disposition and Status	OK
V&V Charge Time	10.591

### A.2 Comments