

V&V Reference Report

L2 ASCDS Version : 7.6.8

Observation 3978 - L2 Version 001
Chandra X-Ray Center

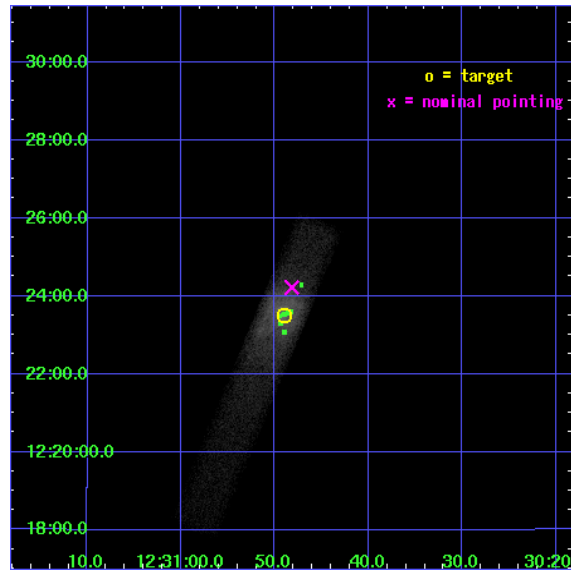
L2 Processing Date : Jul 22 2006

Contents

1	Front	2
2	OBI	3
2.1	OBI	3
2.1.1	Images	3
2.1.2	Bias	3
2.1.3	Parameters	4
2.1.4	Events	4
2.2	Compared Parameters	5
2.3	Aspect	6
2.4	Star Slots	9
2.4.1	Slot 3	9
2.4.2	Slot 4	10
2.4.3	Slot 5	11
2.4.4	Slot 6	12
2.4.5	Slot 7	13
2.5	FID Slots	14
2.5.1	Slot 0	14
2.5.2	Slot 1	15
2.5.3	Slot 2	16
3	Point Sources	17
A	Summary	18
A.1	Status	18
A.2	Comments	18

1 Front

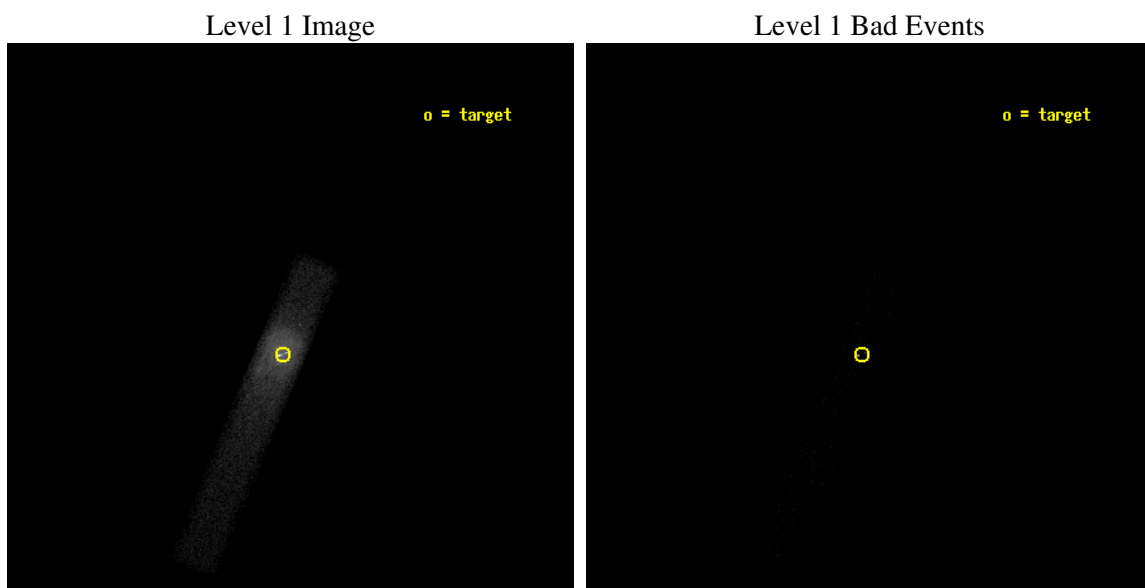
seq_num	700657
obs_id	3978
title	X-RAY VARIABILITY IN THE JET AND CORE OF M87
observer	Dr. Daniel Harris
object	M87
dtcycle	0
cycle	P
ra_targ	187.704167
dec_targ	12.391667
ra_nom	187.70080803348
dec_nom	12.403547238419
roll_nom	112.75048059023
revision	3
ontime	5349.6000797153
livetime	4851.8048972567
ontime7	5349.6000797153
l2events	60023



2 OBI

2.1 OBI

2.1.1 Images



2.1.2 Bias

Chip 7



2.1.3 Parameters

obi_num	0
ascdsver	7.6.8
caldbver	3.2.2
date	2006-07-22T17:10:31
revision	3

sched_exp_time	5000.000000
ontime	5860.4747966826
ontime7	5860.4747966826
l1events	67218

2.1.4 Events

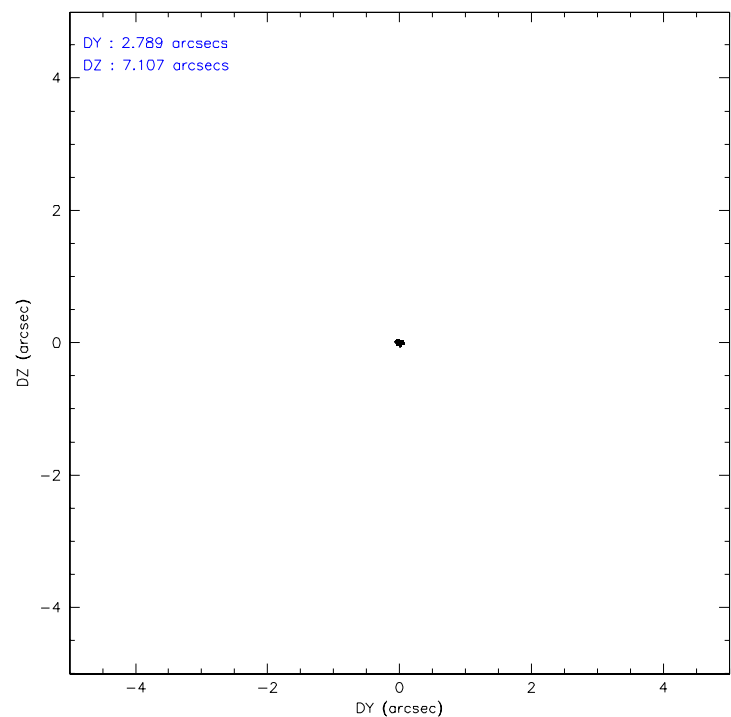
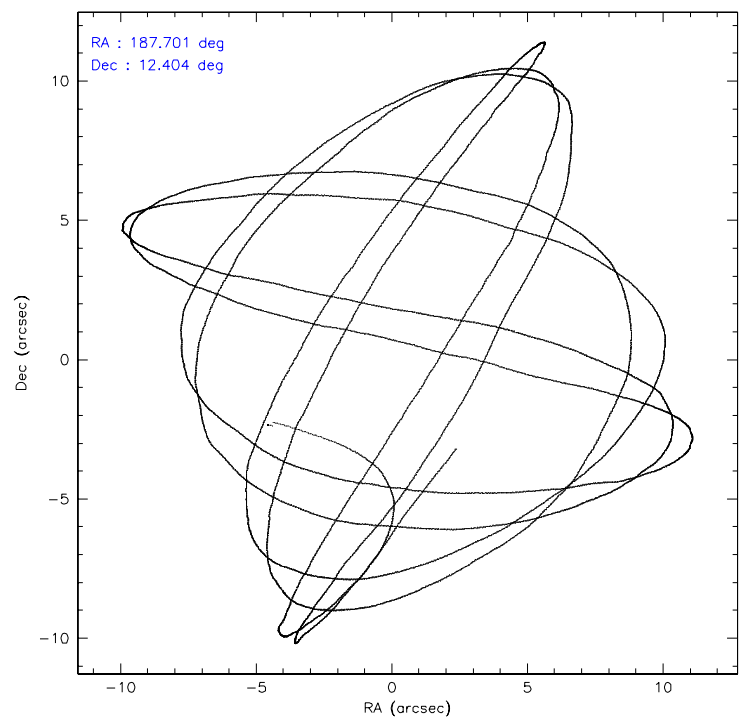
	ccd 7
level 1 events	67218
rejected events	6485
rejected %	9%

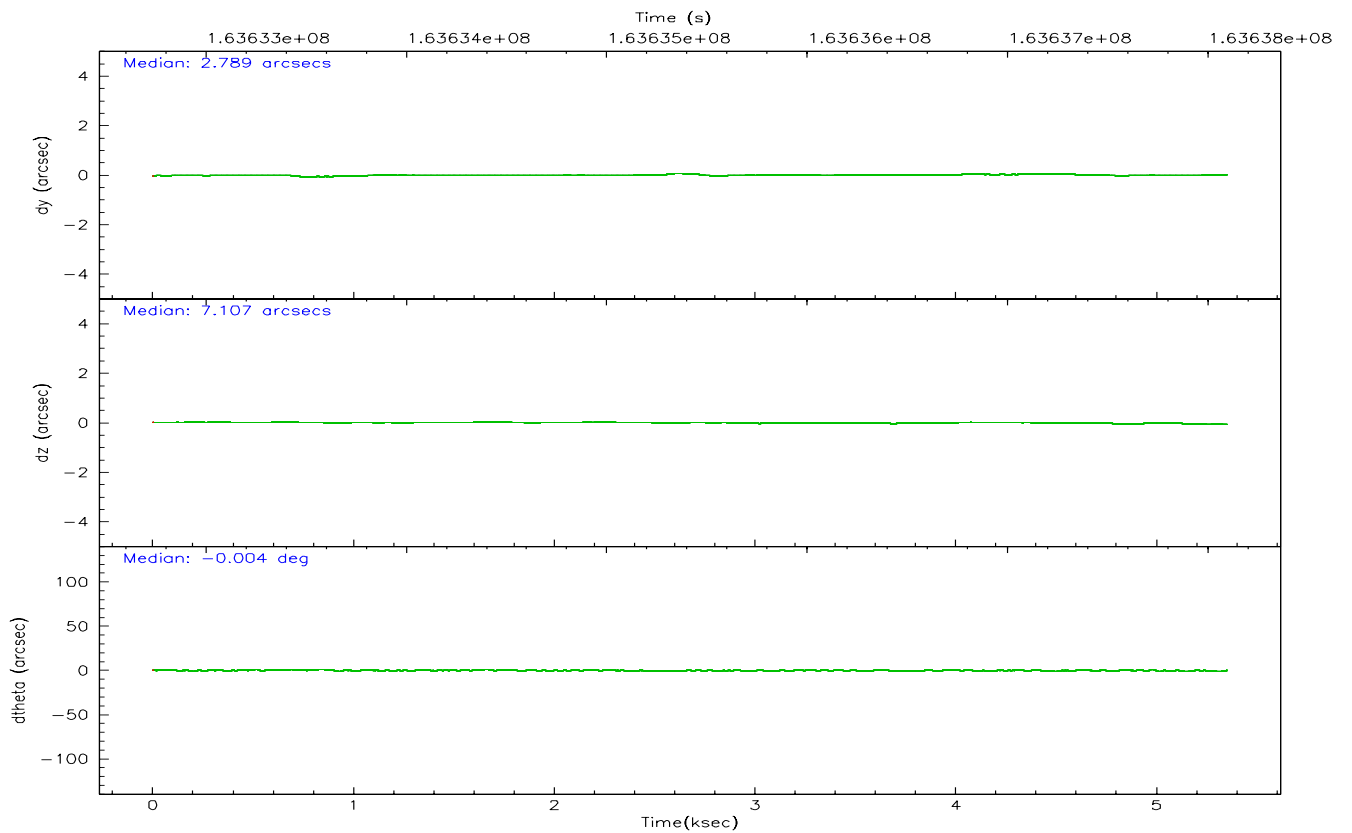
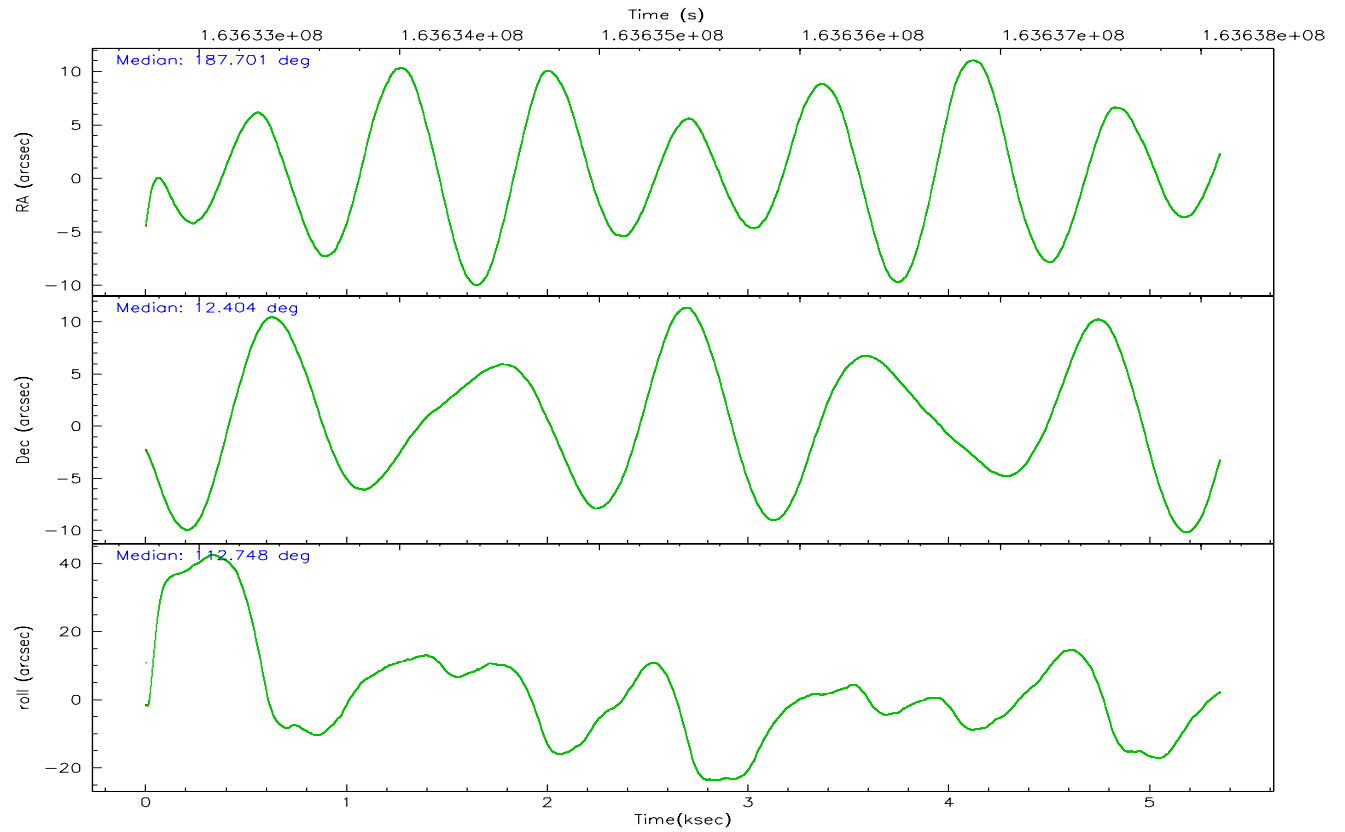
	ccd 7
grade 0 events	19927
	29%
grade 1 events	161
	0%
grade 2 events	16576
	24%
grade 3 events	7183
	10%
grade 4 events	6972
	10%
grade 5 events	1062
	1%
grade 6 events	11845
	17%
grade 7 events	3492
	5%

2.2 Compared Parameters

Parameter	Planned	Actual	Parameter	Planned	Actual
Instrument	ACIS	ACIS	Obspar format version number	6	6
Detector	ACIS-7	ACIS-7	Obspar file type	PREDICTED	ACTUAL
Grating	NONE	NONE	Obspar update status	NONE	UPDATED
Data mode	FAINT	FAINT	On-chip summing requested	N	N
Observation mode	POINTING	POINTING	Subarray requested	1/8	1/8
Pointing RA	187.723306	187.7008080334809	Subarray start row	0	449
Pointing Dec	12.387528	12.4035472384191	Subarray row count	1024	128
Pointing Roll	112.589138	112.750480590232	Alternating exposures requested	N	N
SIM focus pos (mm)	-0.684267	-0.6828225247311905	Primary exposure time	0.000000	0.4
SIM defocus (mm)	0	0.001444936568705701			
SIM translation stage pos (mm)	-190.132523	-190.1400660498719			
SIM translation stage offset (mm)	0	0.00754346686406393			
Observation start time	163633089.184000	163632035.15084			
Observation start date	2003-03-09T21:37:05	2003-03-09T21:20:35			
Observation end time	163638089.184000	163638623.85111			
Observation end date	2003-03-09T23:00:25	2003-03-09T23:10:23			
Read mode	TIMED	TIMED			

2.3 Aspect



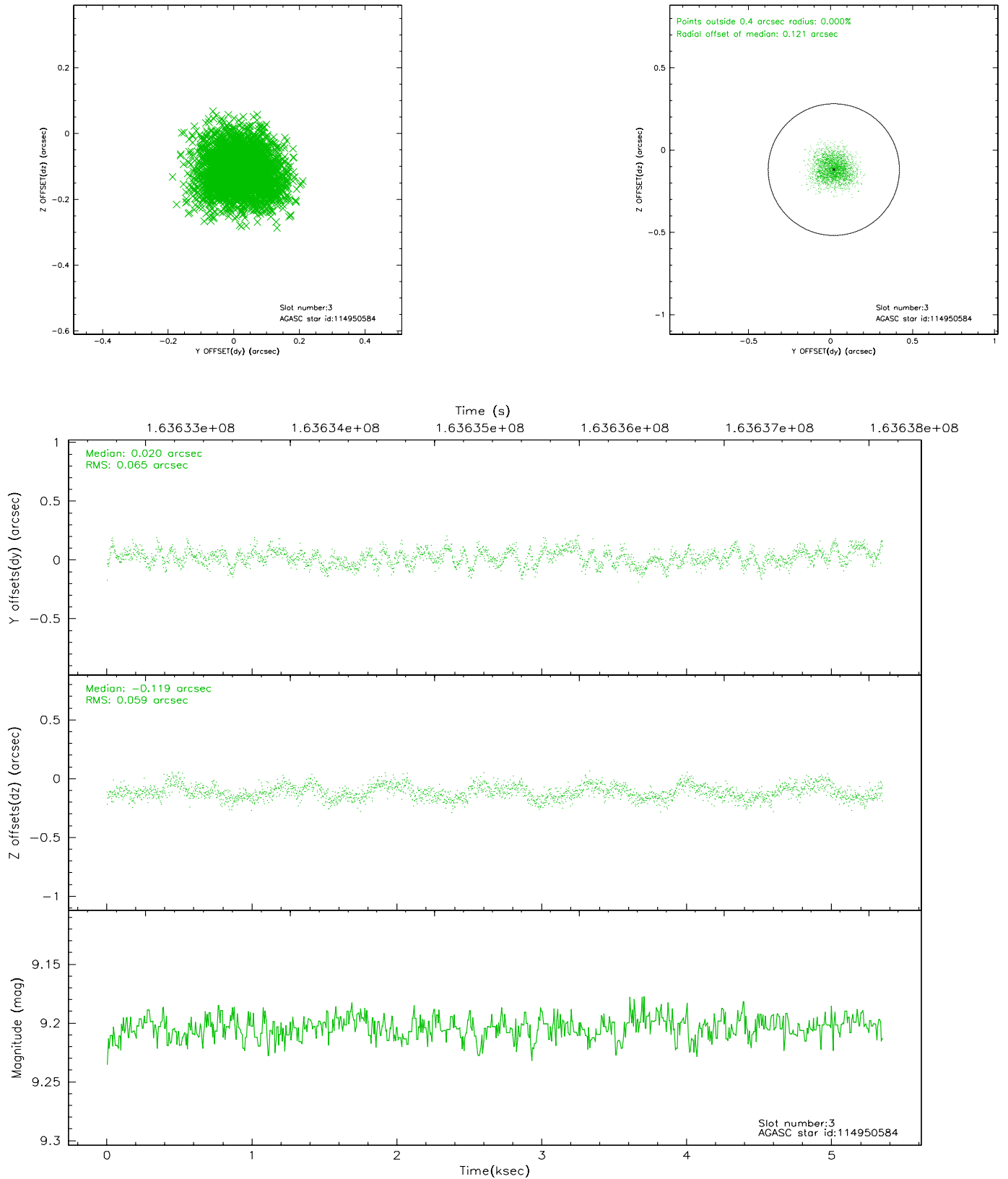


Slot Statistics

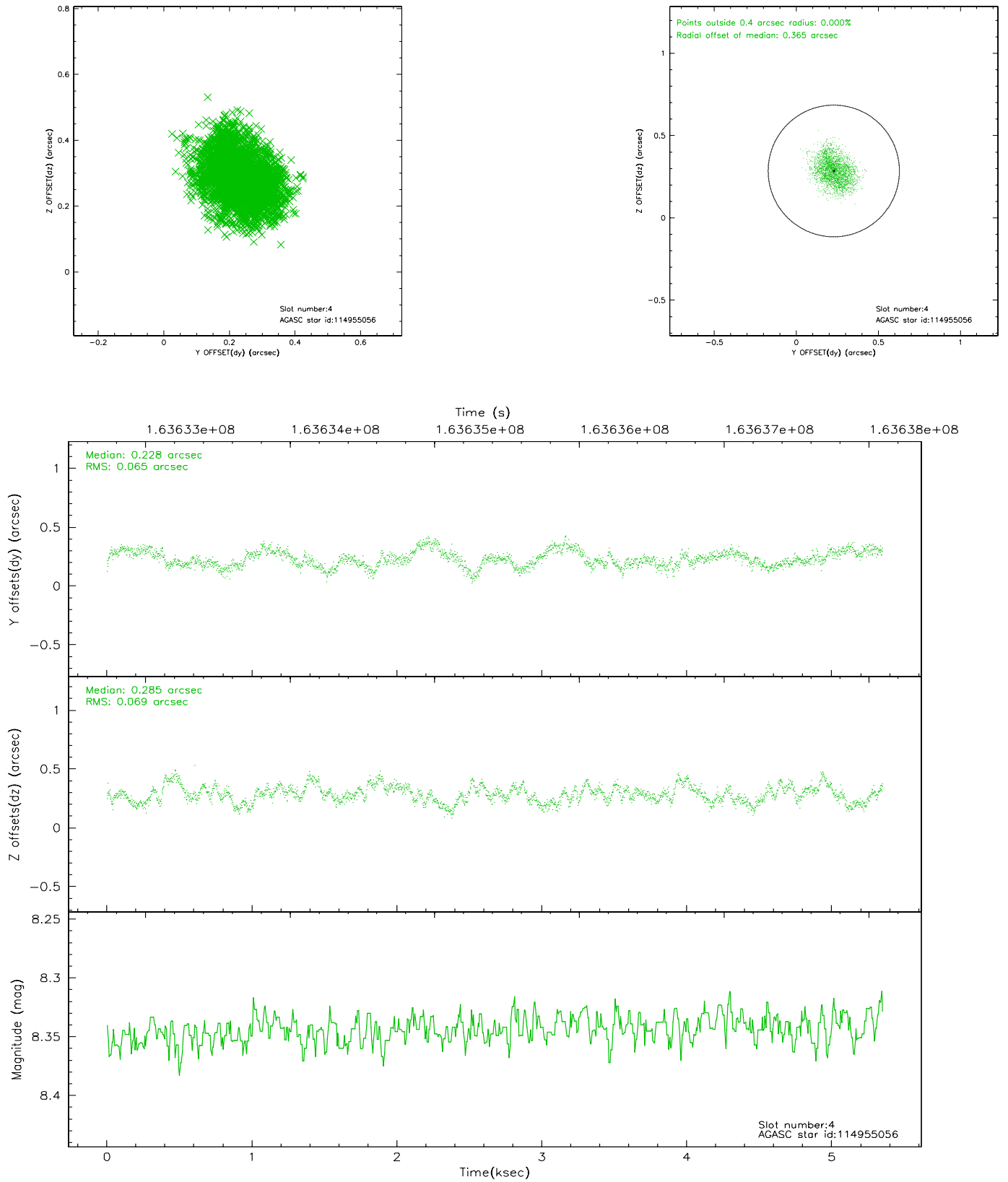
slot	status	id	mag	n_pts	med_dy	med_dz	dr1	dr2	ra	dec	mean_y	mean_z
0	FID	ACIS-S-2	7.11	1306	-0.013	0.023	0.007	0.011	0.000000	0.000000	-755.43	-1728.26
1	FID	ACIS-S-4	7.20	1306	-0.046	0.000	0.005	0.010	0.000000	0.000000	2157.29	179.06
2	FID	ACIS-S-5	7.24	1305	0.028	-0.015	0.006	0.011	0.000000	0.000000	-1806.79	173.97
3	GUIDE	114950584	9.20	2611	0.020	-0.119	0.094	0.149	187.487323	11.827248	-1542.26	1542.01
4	GUIDE	114955056	8.34	2609	0.228	0.285	0.105	0.158	187.914001	12.127854	-1120.70	-260.14
5	GUIDE	114956608	9.67	2608	0.041	-0.052	0.129	0.204	187.452443	11.725979	-1831.87	1795.96
6	GUIDE	114952792	9.51	2600	-0.257	0.168	0.157	0.246	187.070263	12.344747	741.84	2179.38
7	BAD	115349744	10.31	2507	-0.019	-0.286	0.357	0.485	186.878186	12.752529	2357.75	2234.29

2.4 Star Slots

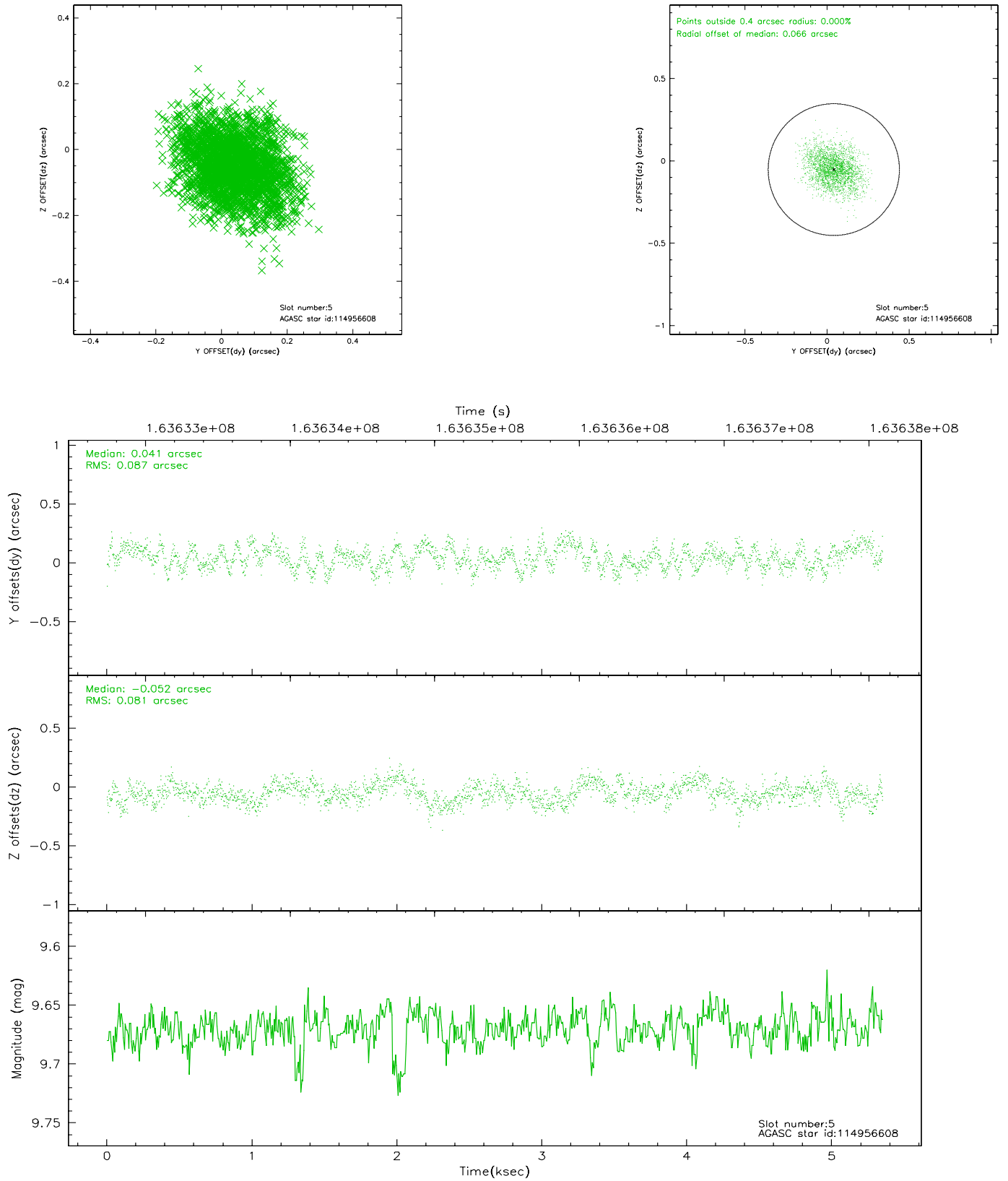
2.4.1 Slot 3



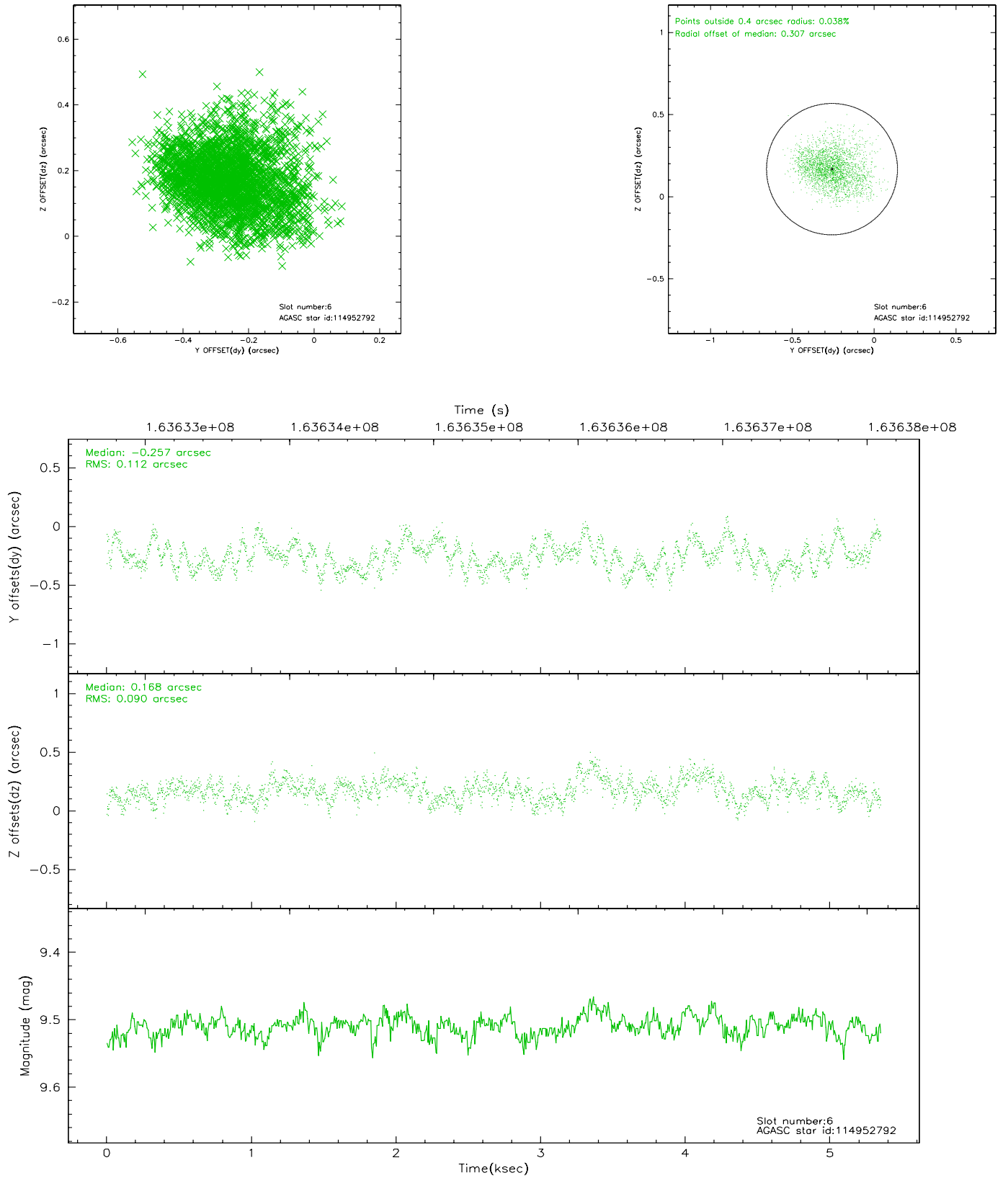
2.4.2 Slot 4



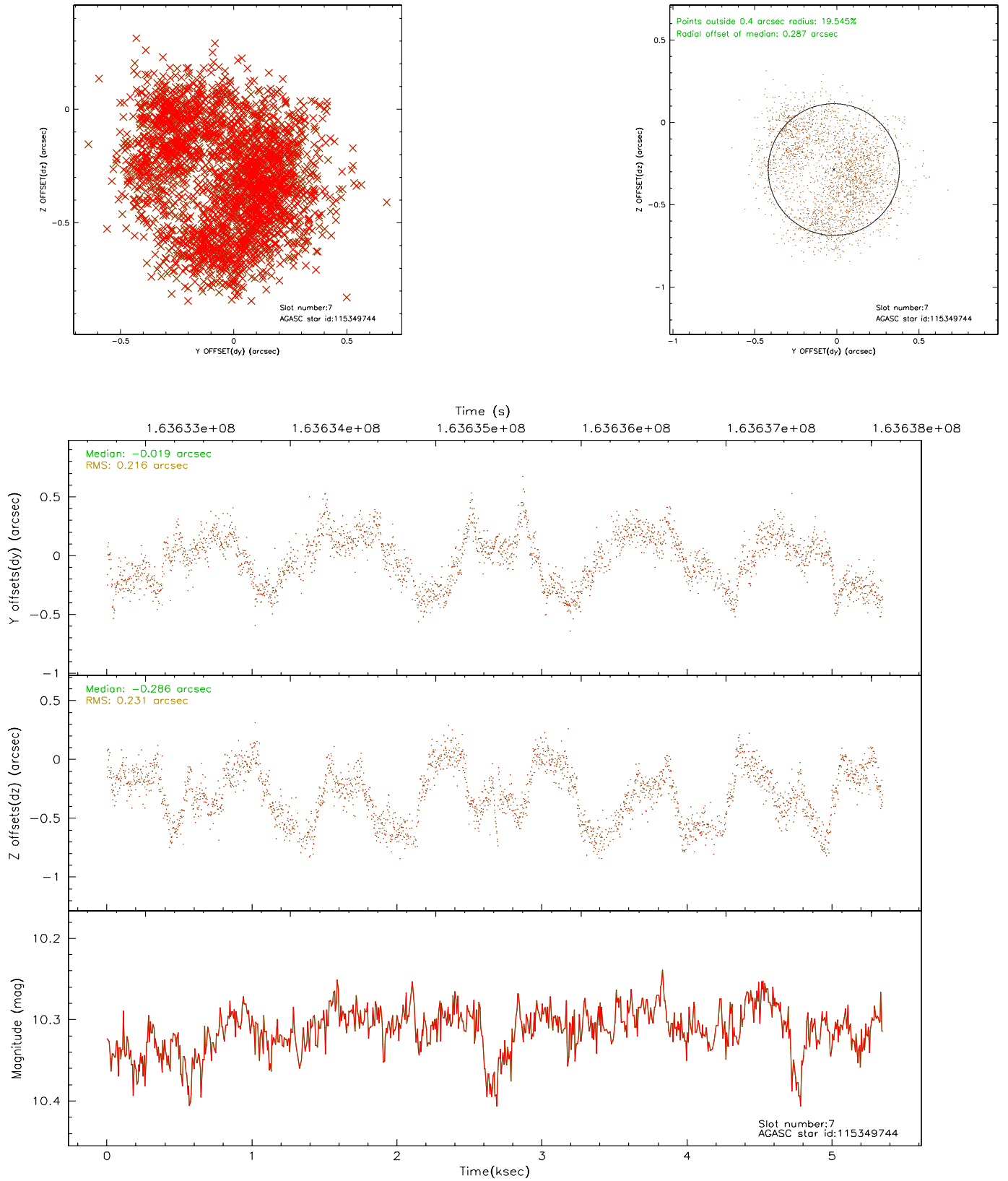
2.4.3 Slot 5



2.4.4 Slot 6

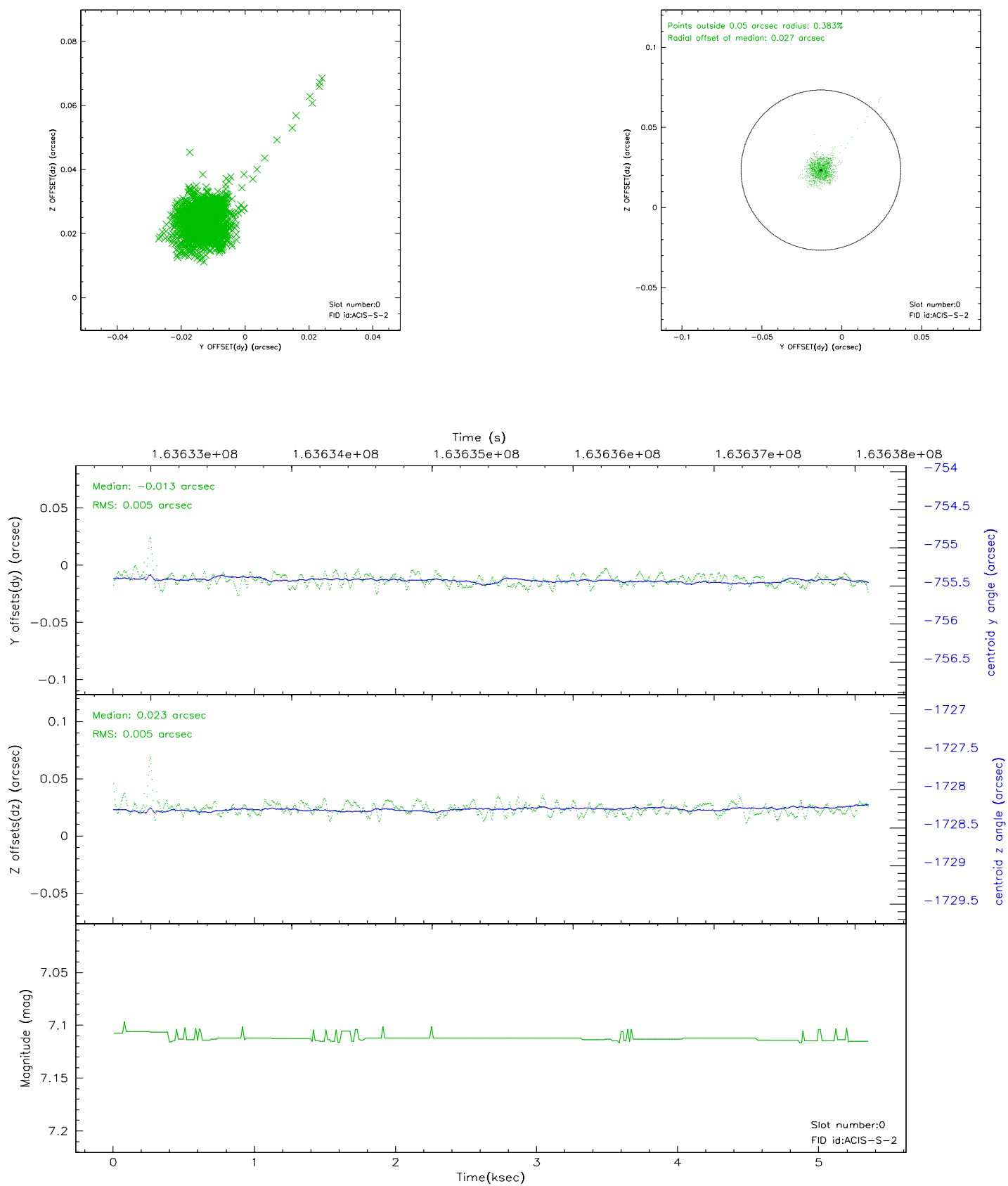


2.4.5 Slot 7

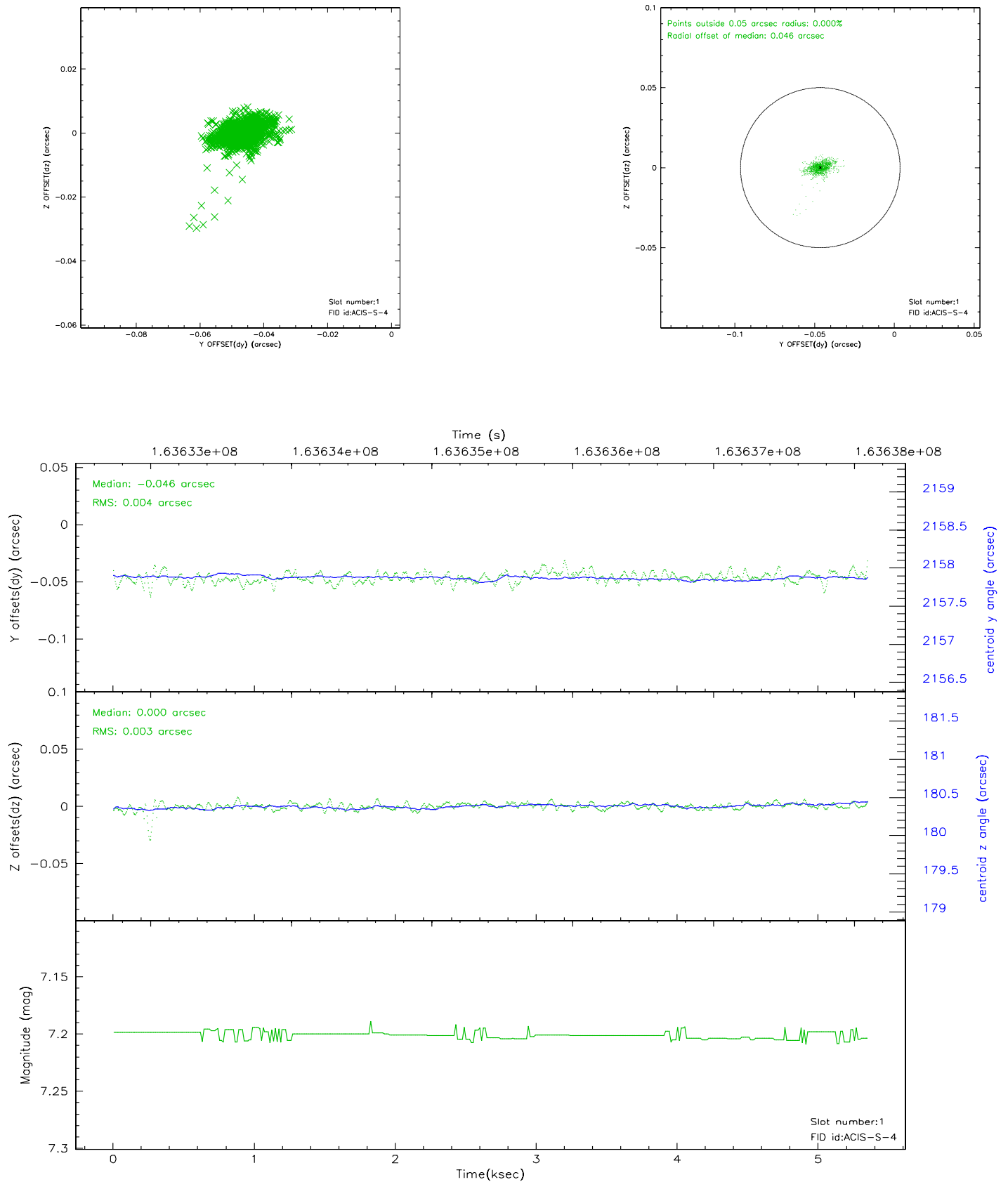


2.5 FID Slots

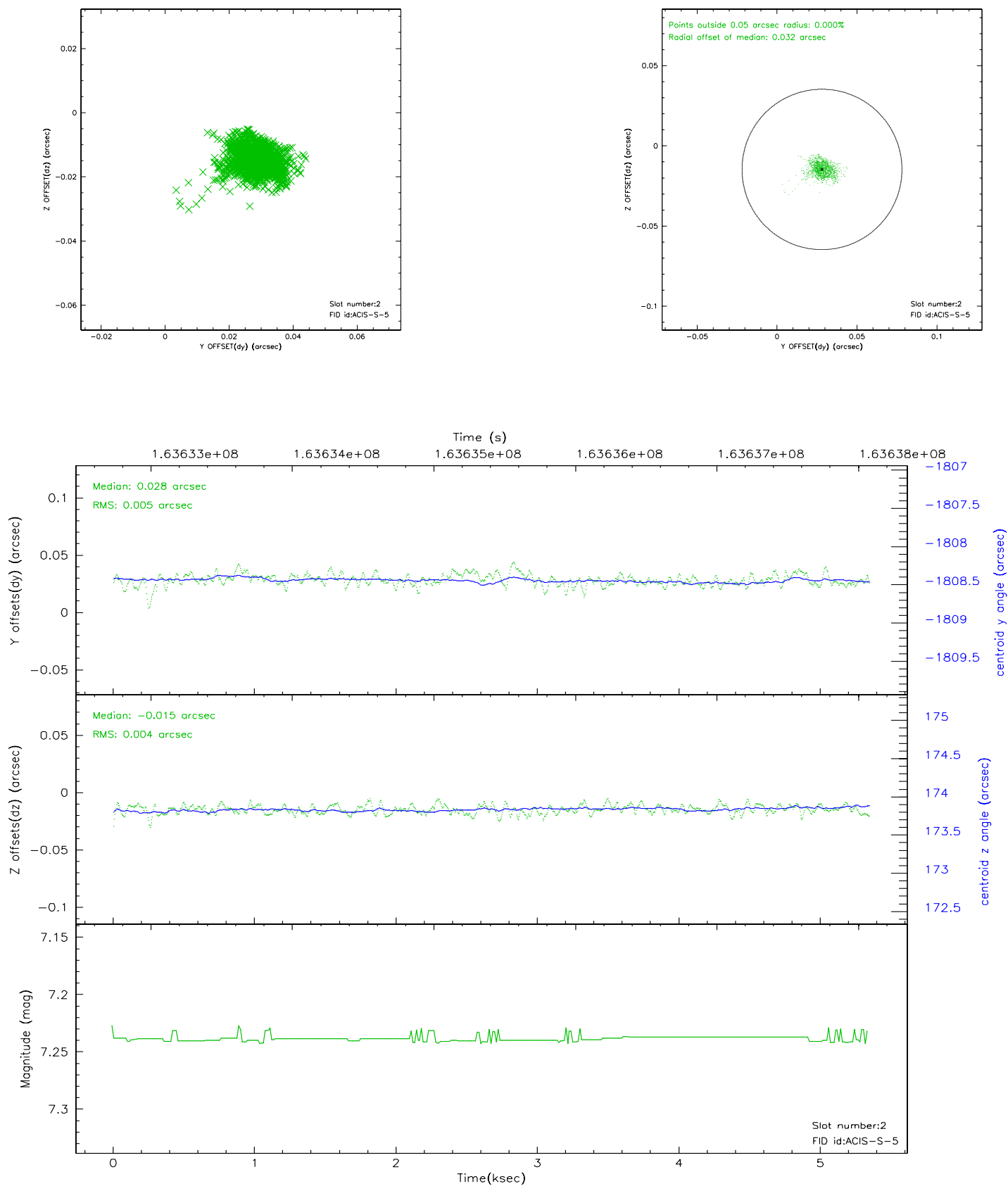
2.5.1 Slot 0



2.5.2 Slot 1



2.5.3 Slot 2



3 Point Sources

A Summary

A.1 Status

V&V Scientist	Beth Sundheim
V&V Date (YYYY-MM-DD)	2006.07.23
V&V Edition	1
V&V Disposition and Status	OK
V&V Charge Time	5.349

A.2 Comments

Slot 7 was excluded from aspect solution.