

V&V Reference Report

L2 ASCDS Version : 8.4.5

Observation 3958 - L2 Version 4
Chandra X-Ray Center

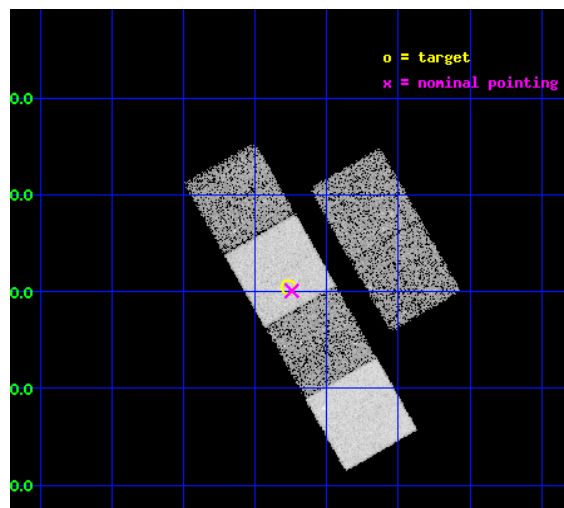
L2 Processing Date : Oct 28 2012

Contents

1	Front	2
2	OBI	3
2.1	OBI	3
2.1.1	Images	3
2.1.2	Bias	3
2.1.3	Parameters	4
2.1.4	Events	4
2.2	Compared Parameters	5
2.3	Aspect	6
2.4	Star Slots	9
2.4.1	Slot 3	9
2.4.2	Slot 4	10
2.4.3	Slot 5	11
2.4.4	Slot 6	12
2.4.5	Slot 7	13
2.5	FID Slots	14
2.5.1	Slot 0	14
2.5.2	Slot 1	15
2.5.3	Slot 2	16
A	Summary	17
A.1	Status	17
A.2	Comments	17

1 Front

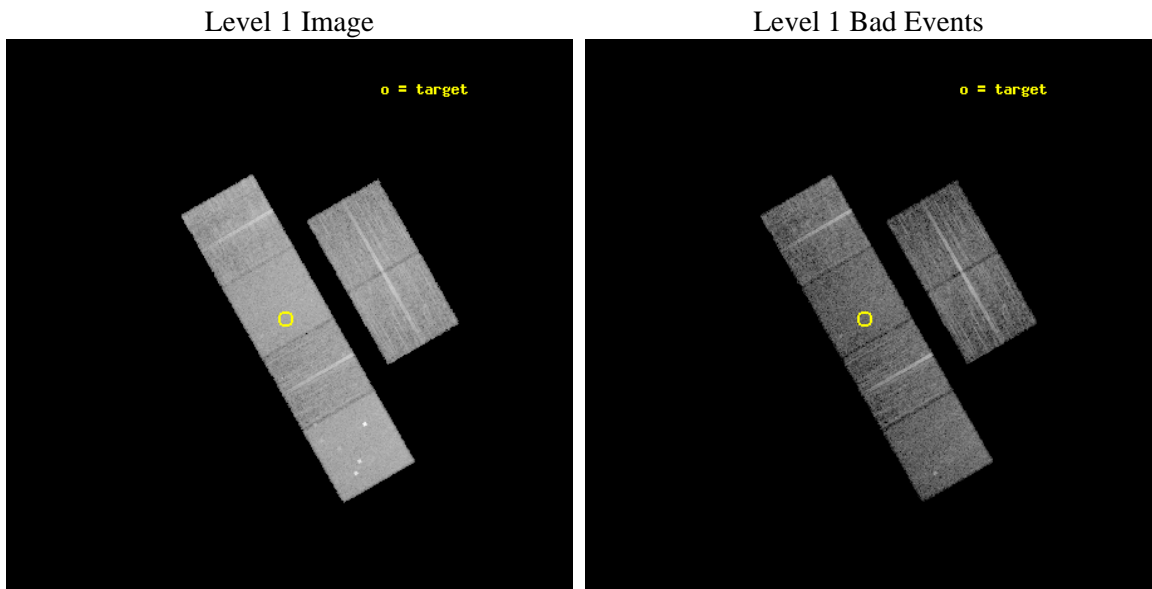
seq_num	700637	Sequence number
obs_id	3958	Observation id
title	A CHANDRA AND XMM-NEWTON STUDY OF THE MOST DISTANT QUASARS: X-RAYING THE FIRST MASSIVE BLACK HOLES	Proposal title
observer	Prof. William Brandt	Principal investigator
object	SDSS J130216+003032	Source name
dtcycle	0	
cycle	P	events from which exps? Prim/Second/Both
ra_targ	195.567083	Observer's specified target RA [deg]
dec_targ	0.508917	Observer's specified target Dec [deg]
ra_nom	195.5609272803	Nominal RA [deg]
dec_nom	0.50147850721408	Nominal Dec [deg]
roll_nom	240.23521551103	Nominal Roll [deg]
revision	4	Processing version of data
ontime	10950.399959207	Sum of GTIs [s]
livetime	10811.739401384	Livetime [s]
ontime2	10950.399959207	Sum of GTIs [s]
ontime3	10950.399959207	Sum of GTIs [s]
ontime5	10950.399959207	Sum of GTIs [s]
ontime6	10950.399959207	Sum of GTIs [s]
ontime7	10950.399959207	Sum of GTIs [s]
ontime8	10950.399959207	Sum of GTIs [s]
l2events	107618	Number of level 2 events



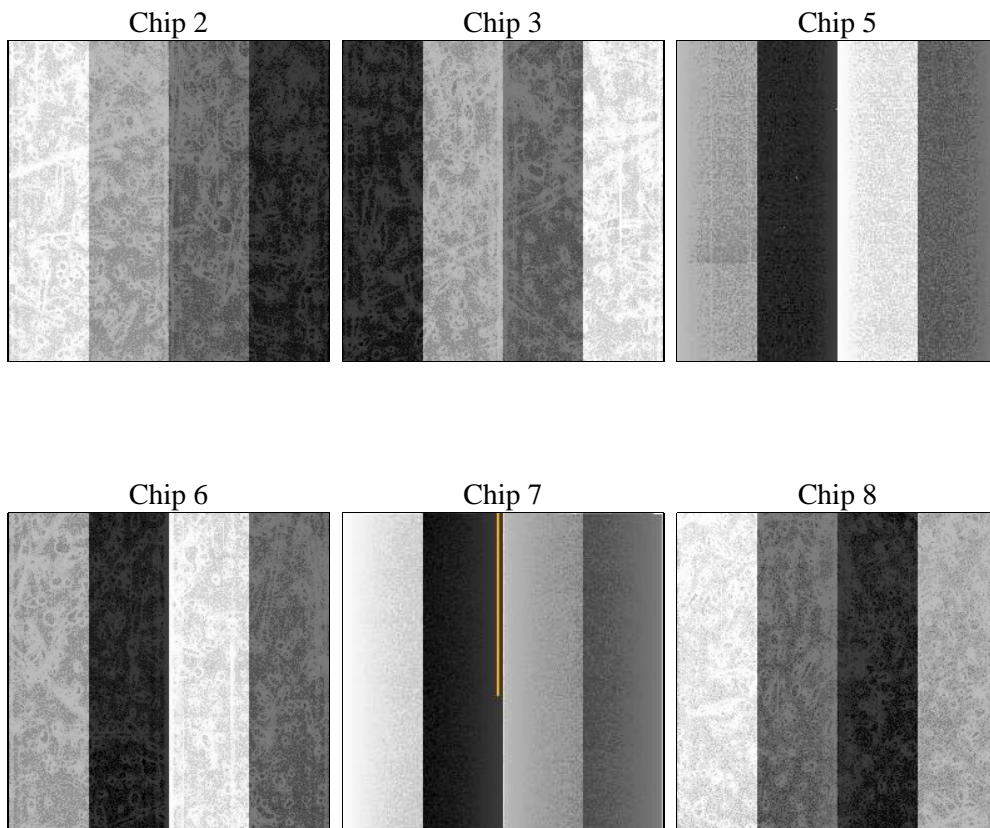
2 OBI

2.1 OBI

2.1.1 Images



2.1.2 Bias



2.1.3 Parameters

obi_num	1	Obi number	sched_exp_time	10800.000000	[s] Scheduled observation exposure time
ascdsver	8.4.5	Processing system revision	ontime	10950.399959207	Sum of GTIs [s]
caldsver	4.5.2	 	ontime2	10950.399959207	Sum of GTIs [s]
date	2012-10-28T13:32:14	Date and time of file creation	ontime3	10950.399959207	Sum of GTIs [s]
revision	4	Processing version of data	ontime5	10950.399959207	Sum of GTIs [s]
			ontime6	10950.399959207	Sum of GTIs [s]
			ontime7	10950.399959207	Sum of GTIs [s]
			ontime8	10950.399959207	Sum of GTIs [s]
			l1events	507207	Number of level 1 events

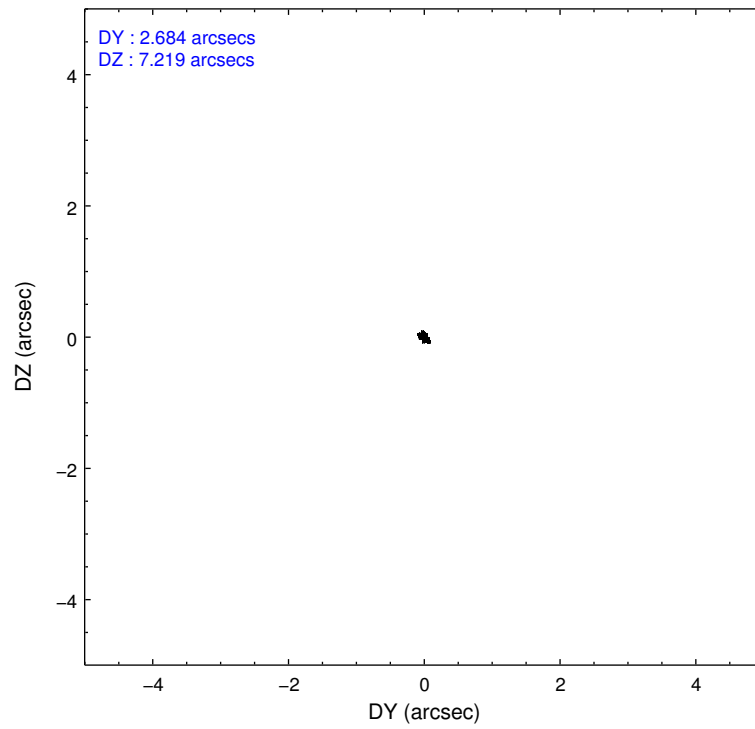
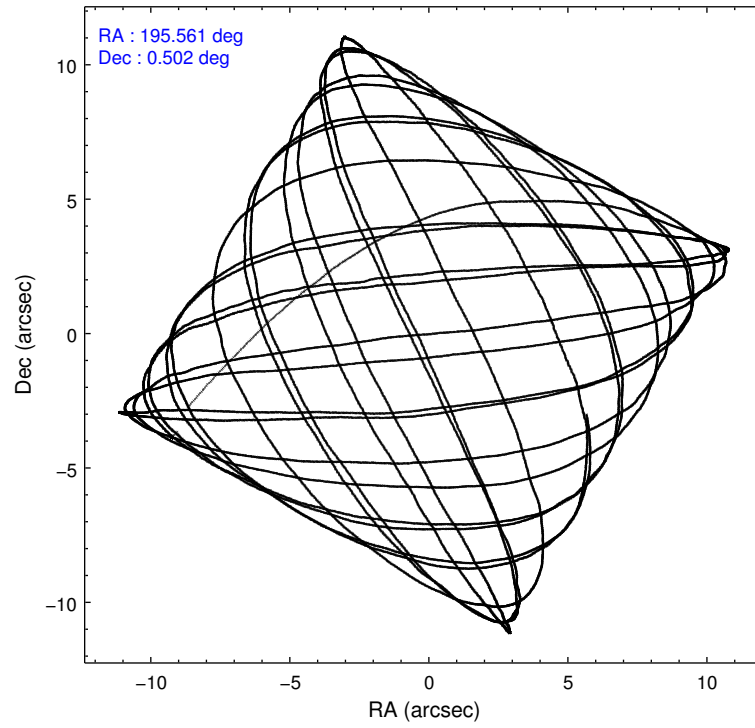
2.1.4 Events

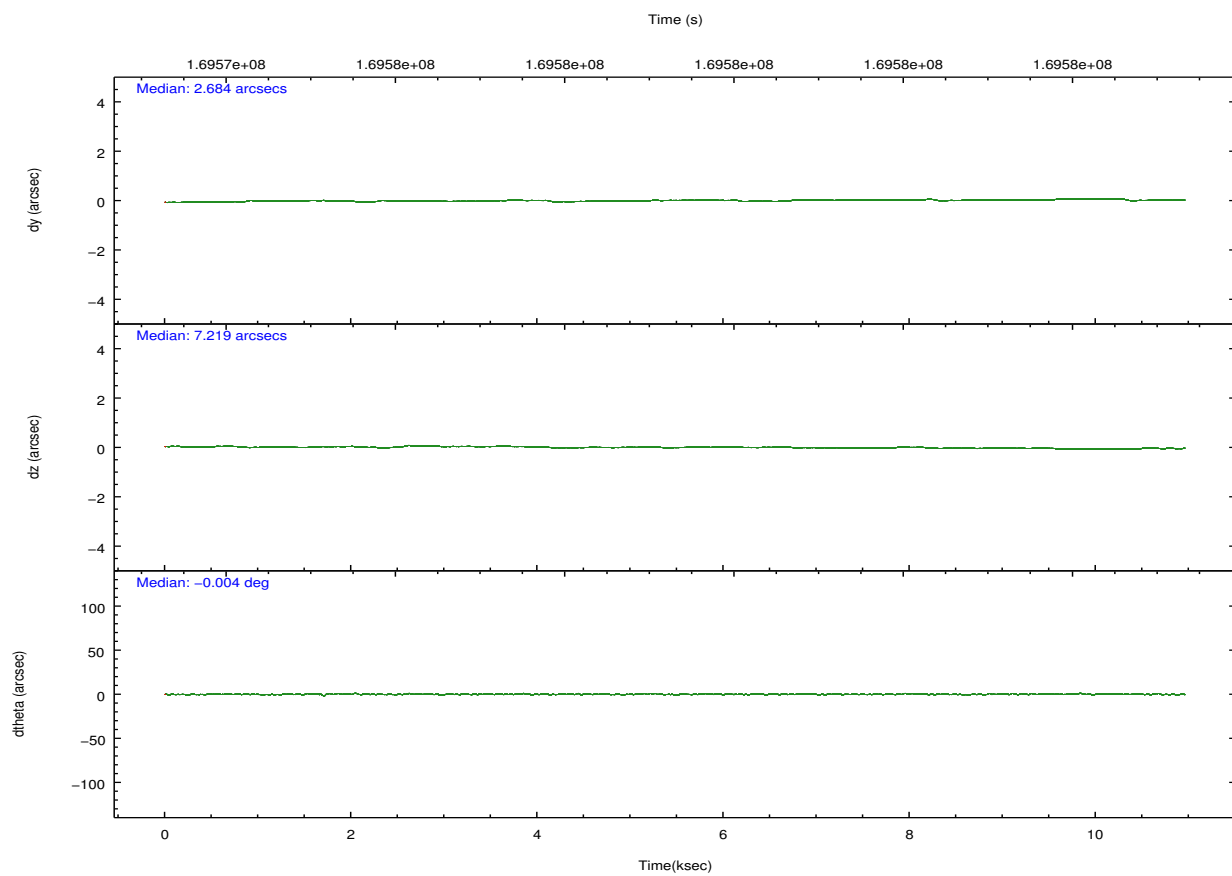
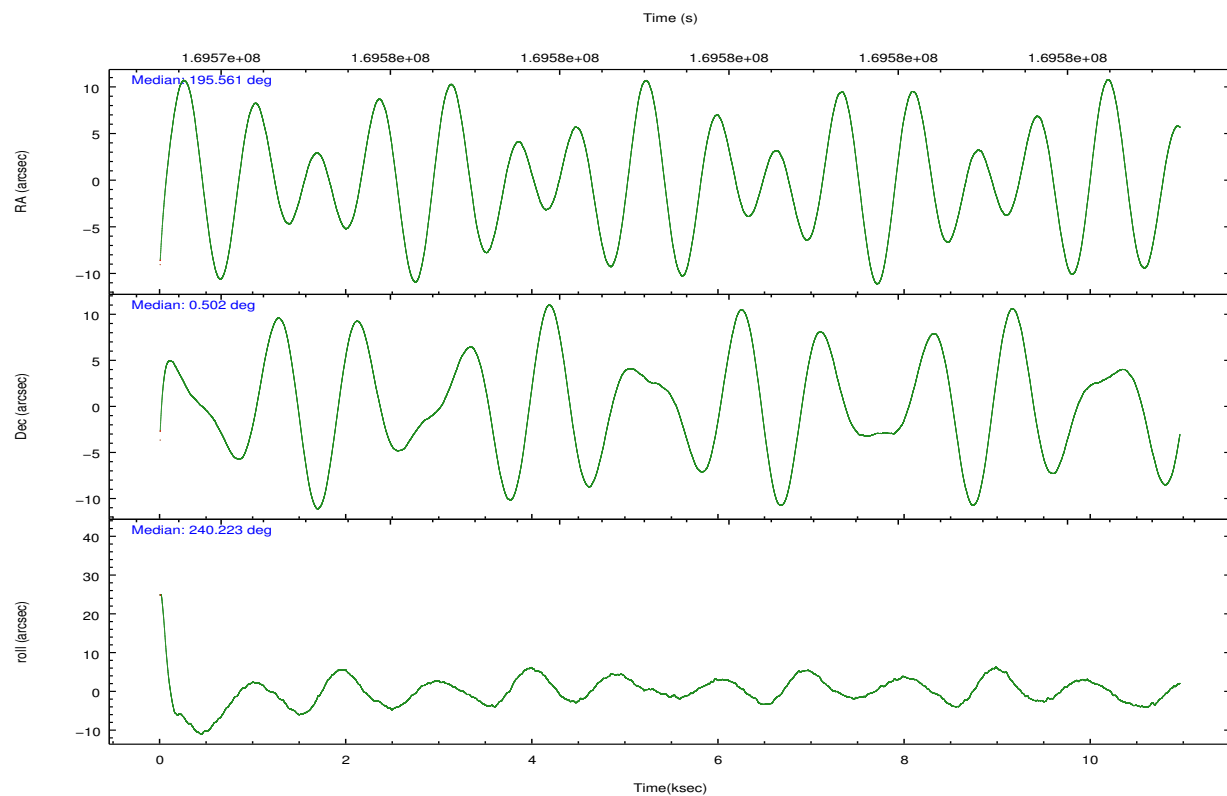
	ccd 2	ccd 3	ccd 5	ccd 6	ccd 7	ccd 8		ccd 2	ccd 3	ccd 5	ccd 6	ccd 7	ccd 8
level 1 events	74000	68946	108372	71881	94786	89222	grade 0 events	3675	3732	7707	3598	3611	5830
rejected events	66099	61074	59566	63500	57814	71277		4%	5%	7%	5%	3%	6%
rejected %	89%	88%	54%	88%	60%	79%	grade 1 events	48	48	137	46	76	62
								0%	0%	0%	0%	0%	0%
							grade 2 events	1658	1478	14434	1724	7528	4003
								2%	2%	13%	2%	7%	4%
							grade 3 events	770	842	2000	917	3486	2110
								1%	1%	1%	1%	3%	2%
							grade 4 events	797	814	1841	849	3371	1888
								1%	1%	1%	1%	3%	2%
							grade 5 events	2795	3083	8080	3367	9236	4132
								3%	4%	7%	4%	9%	4%
							grade 6 events	1383	1392	24932	1744	20777	4967
								1%	2%	23%	2%	21%	5%
							grade 7 events	62874	57557	49241	59636	46701	66230
								84%	83%	45%	82%	49%	74%

2.2 Compared Parameters

Parameter	Planned	Actual	Parameter	Planned	Actual
Instrument	ACIS	ACIS	Obspar format version number	7	7
Detector	ACIS-235678	ACIS-235678	Obspar file type	PREDICTED	ACTUAL
Grating	NONE	NONE	Obspar update status	NONE	UPDATED
Data mode	FAINT	FAINT	Number of optional ACIS chips dropped	0	0
Observation mode	POINTING	POINTING	On-chip summing requested	N	N
[deg] Pointing RA	195.560402	195.5609272802966	Subarray requested	NONE	NONE
[deg] Pointing Dec	0.528720	0.5014785072140796	Alternating exposures requested	N	N
[deg] Pointing Roll	240.078561	240.2352155110281	[s] Primary exposure time	0.000000	3.2
[mm] SIM focus pos	-0.684267	-0.6828225247311905			
[mm] SIM defocus	0	0.001444936568705701			
[mm] SIM translation stage pos	-190.132523	-190.1400660498719			
[mm] SIM translation stage offset	0	0.00754346686406393			
[s] Observation start time (MET)	169573988.184000	169572683.76419			
Observation start date	2003-05-17T15:52:04	2003-05-17T15:31:23			
[s] Observation end time (MET)	169584788.184000	169585157.50222			
Observation end date	2003-05-17T18:52:04	2003-05-17T18:59:17			
Read mode	TIMED	TIMED			

2.3 Aspect



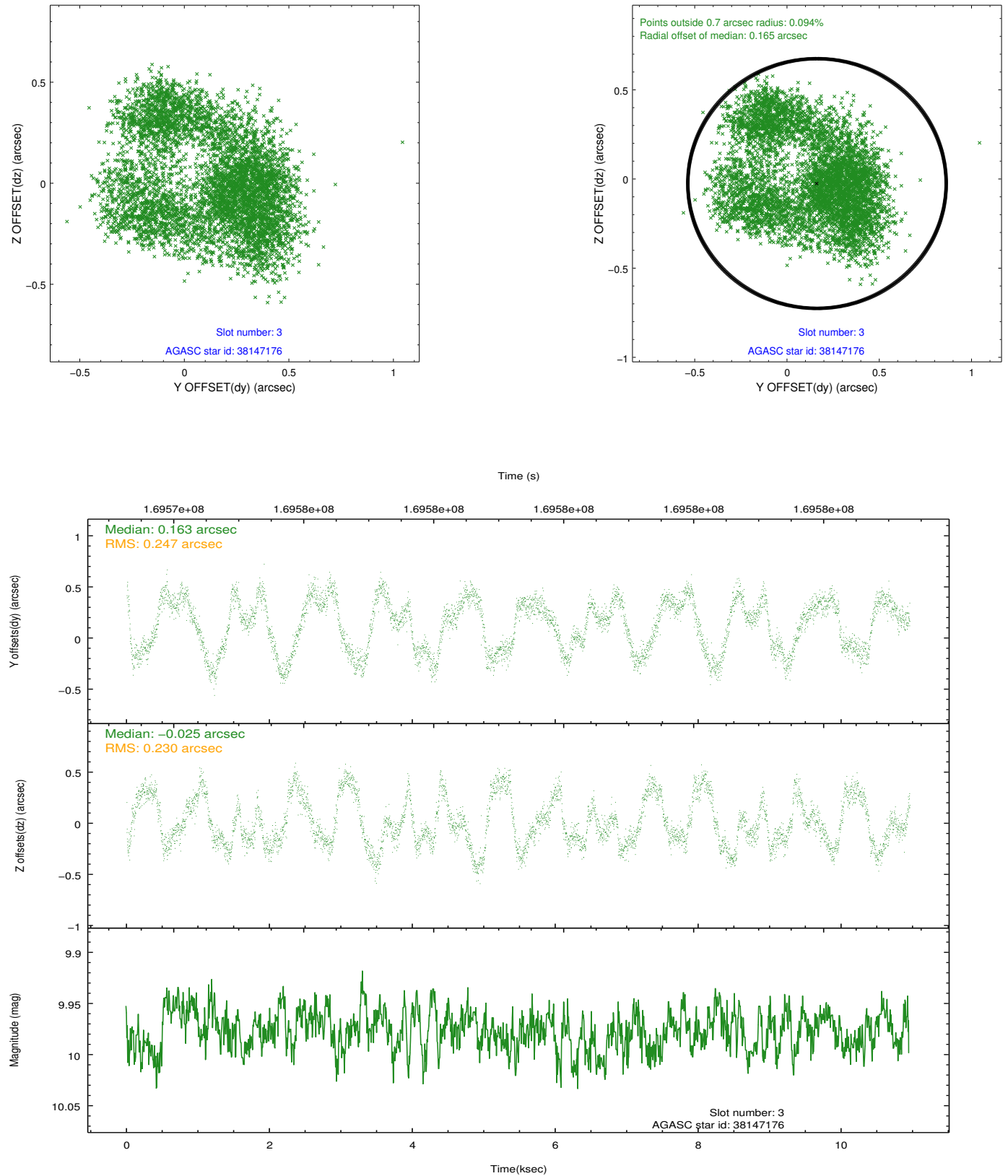


Slot Statistics

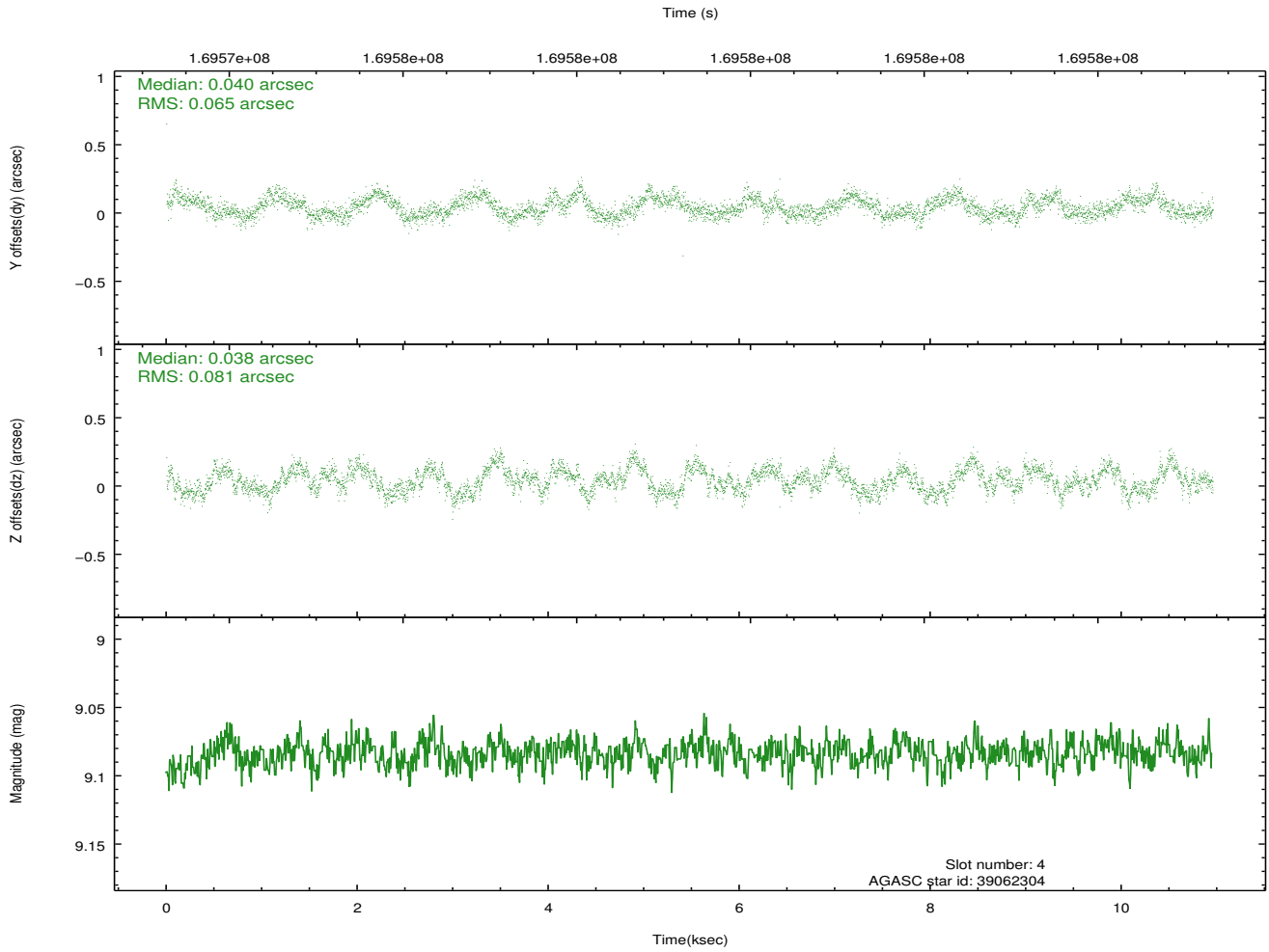
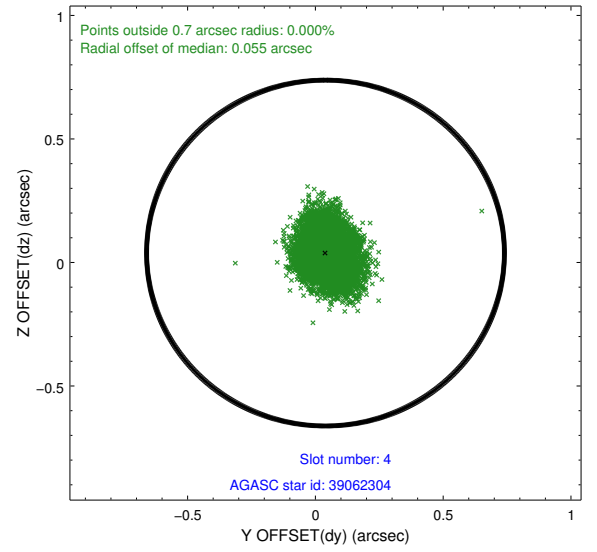
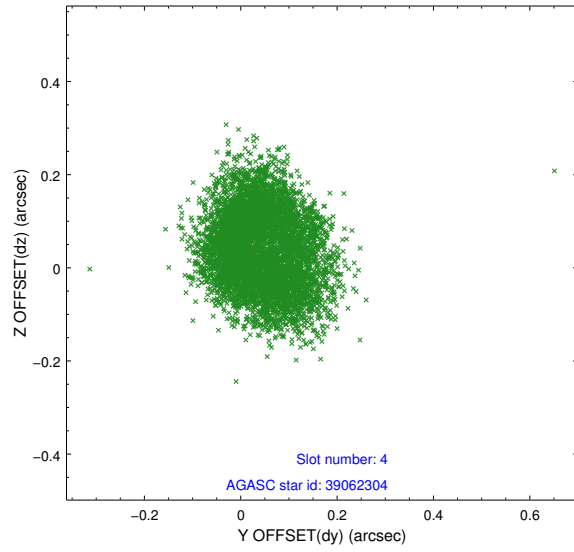
slot	status	id	mag	n_pts	med_dy	med_dz	dr1	dr2	ra	dec	mean_y	mean_z
0	FID	ACIS-S-2	7.11	2672	-0.029	-0.013	0.007	0.011	0.000000	0.000000	-755.33	-1728.40
1	FID	ACIS-S-4	7.20	2673	0.016	0.018	0.006	0.011	0.000000	0.000000	2157.77	179.64
2	FID	ACIS-S-5	7.24	2673	-0.018	0.004	0.007	0.012	0.000000	0.000000	-1807.57	173.81
3	GUIDE	38147176	9.98	5341	0.163	-0.025	0.377	0.543	194.928487	0.307485	1825.67	-1574.21
4	GUIDE	39062304	9.08	5345	0.040	0.038	0.111	0.170	195.688569	0.285475	529.58	836.20
5	GUIDE	39063488	9.51	5344	-0.130	0.121	0.111	0.176	195.608113	0.950549	-1401.38	-608.77
6	GUIDE	39064944	8.03	5346	-0.002	-0.111	0.108	0.156	195.513486	0.405733	467.94	74.27
7	GUIDE	39064152	7.00	5345	-0.047	-0.043	0.108	0.157	196.185427	0.295130	-393.34	2369.31

2.4 Star Slots

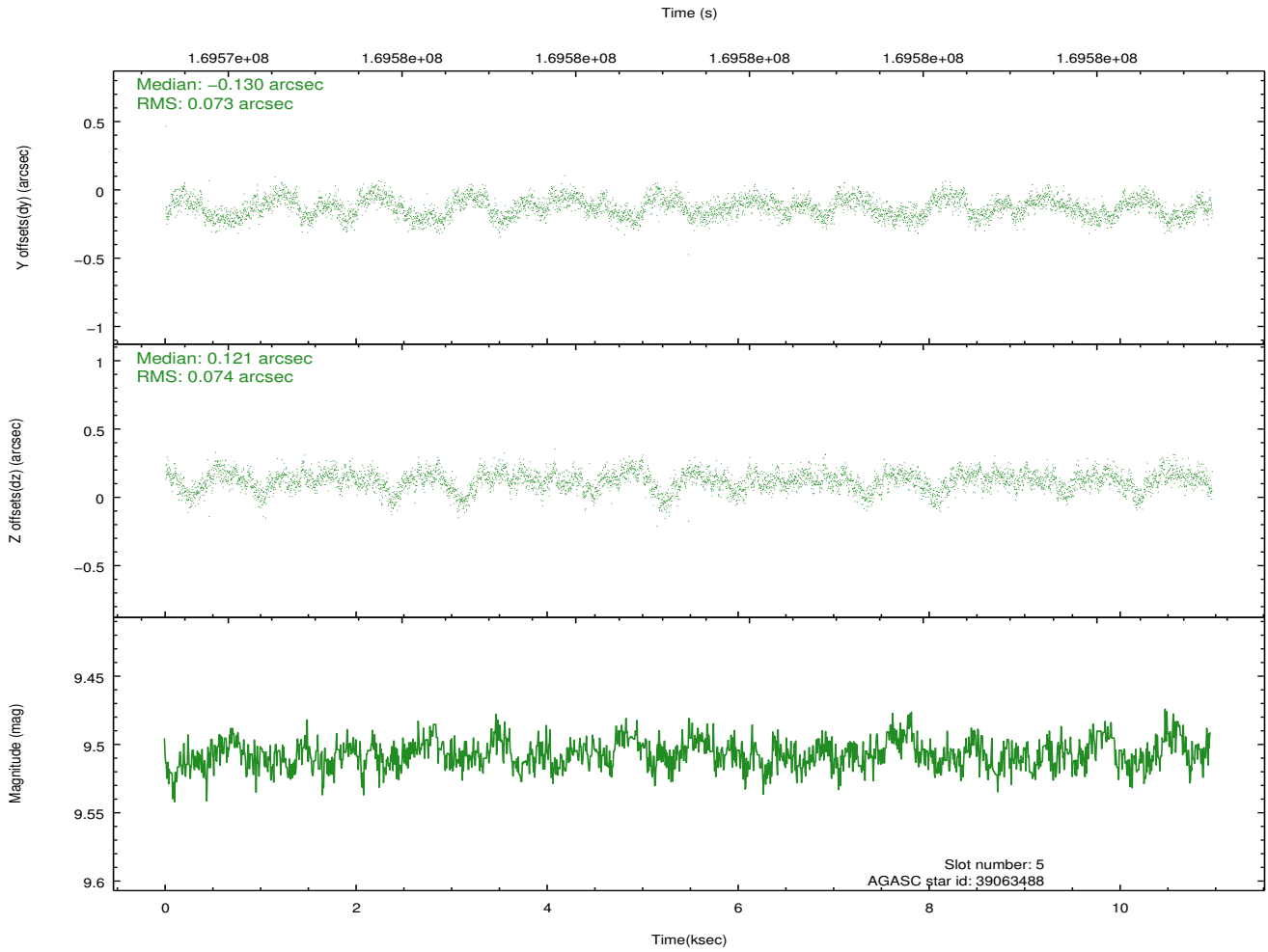
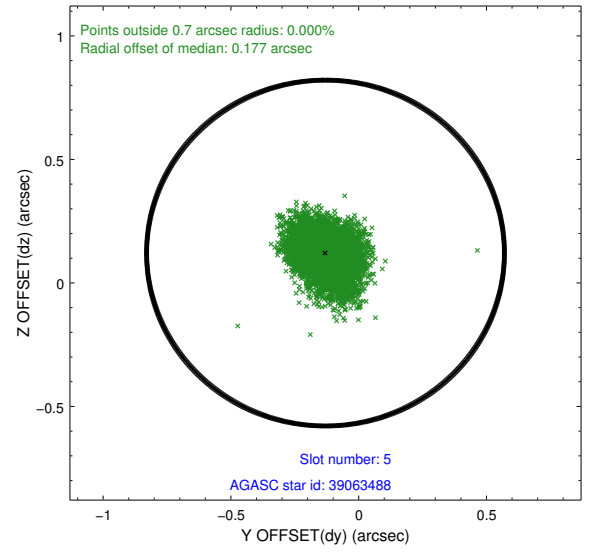
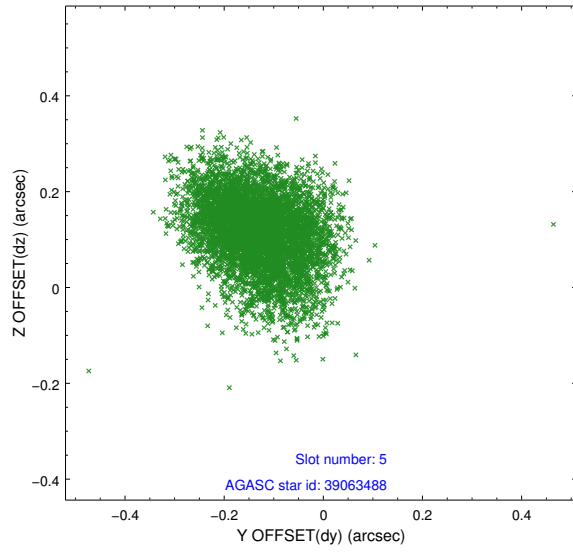
2.4.1 Slot 3



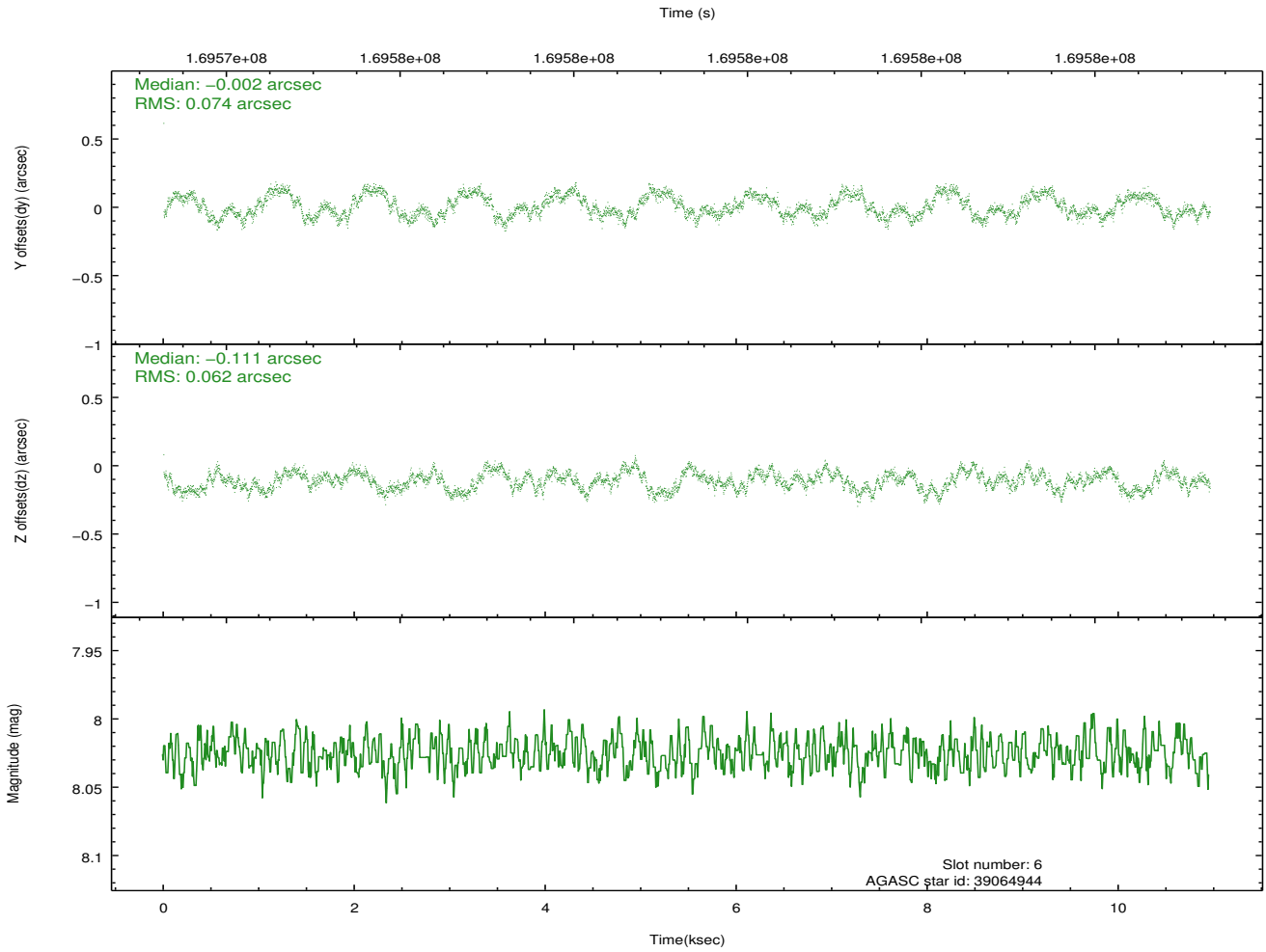
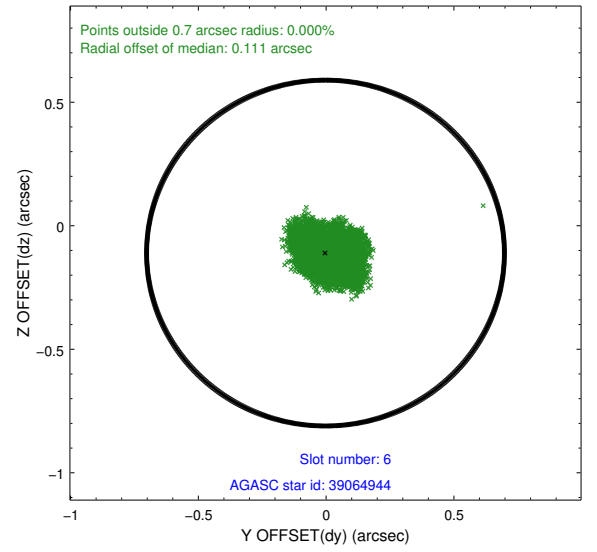
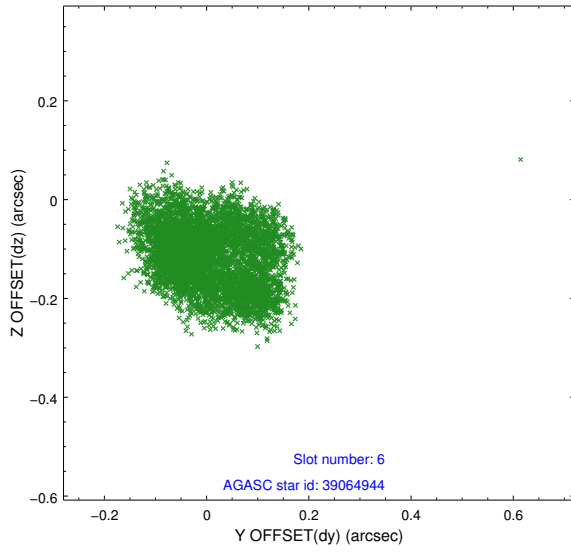
2.4.2 Slot 4



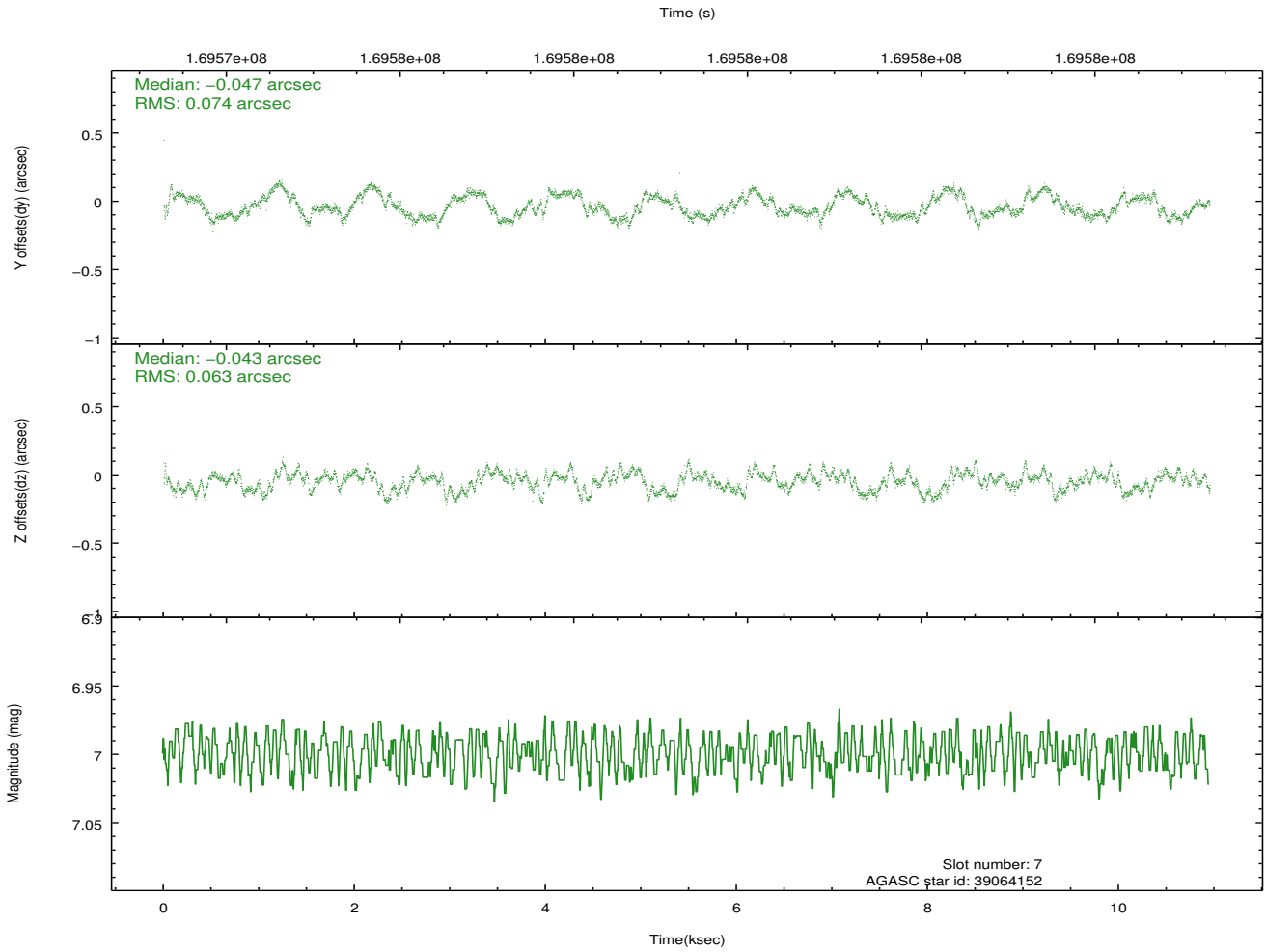
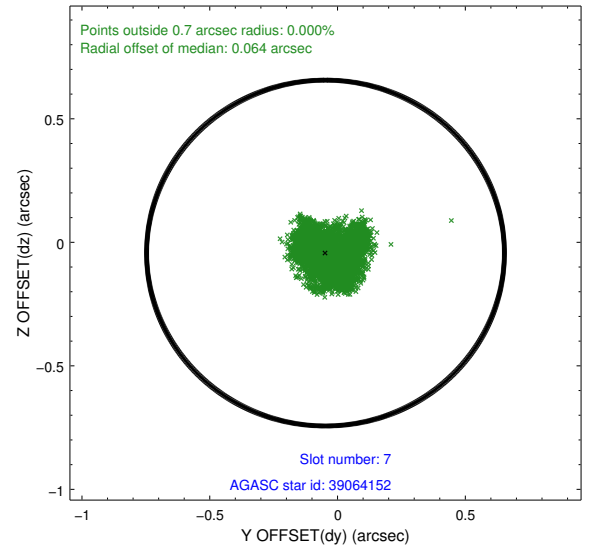
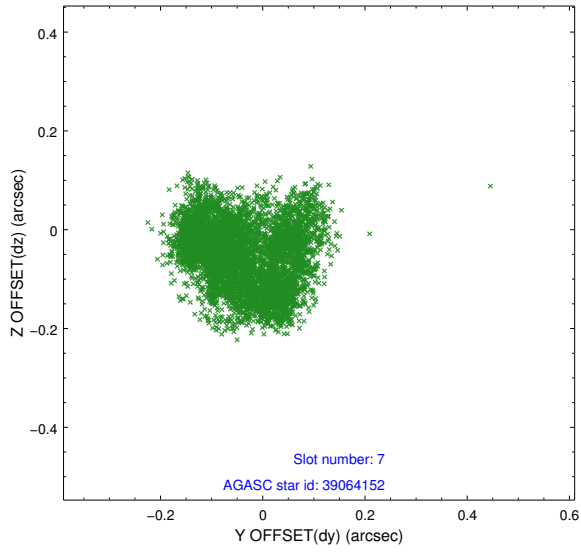
2.4.3 Slot 5



2.4.4 Slot 6

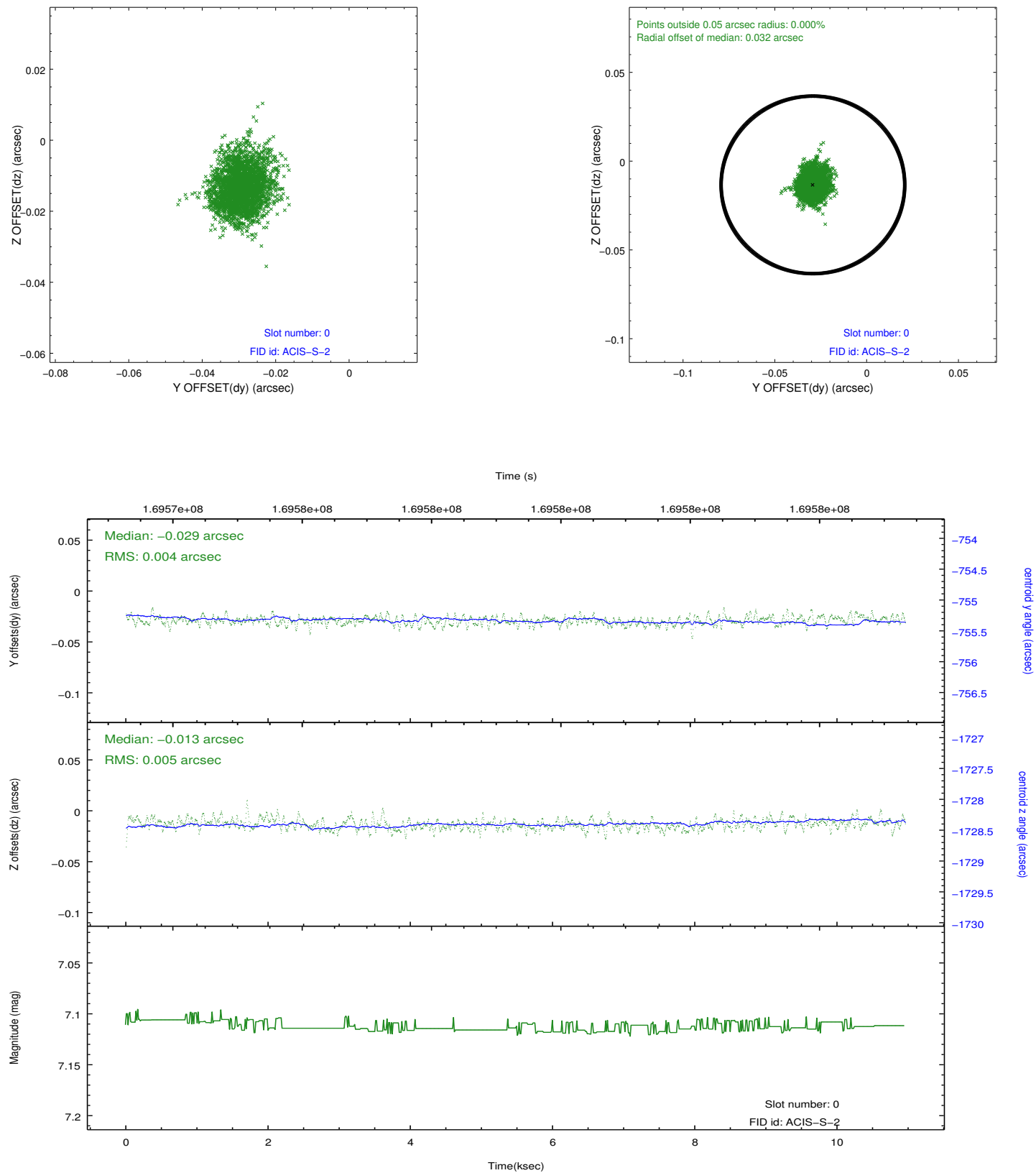


2.4.5 Slot 7

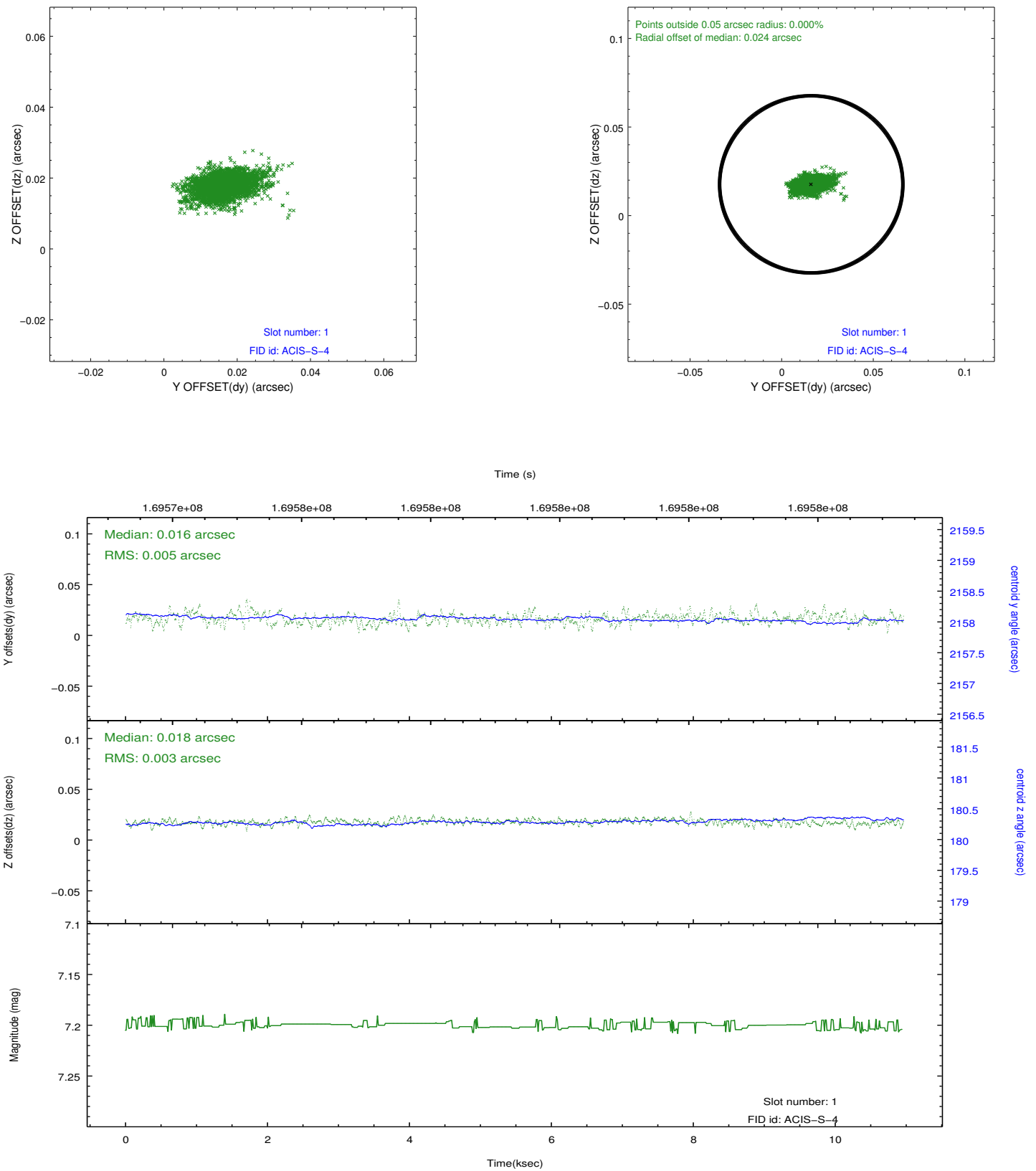


2.5 FID Slots

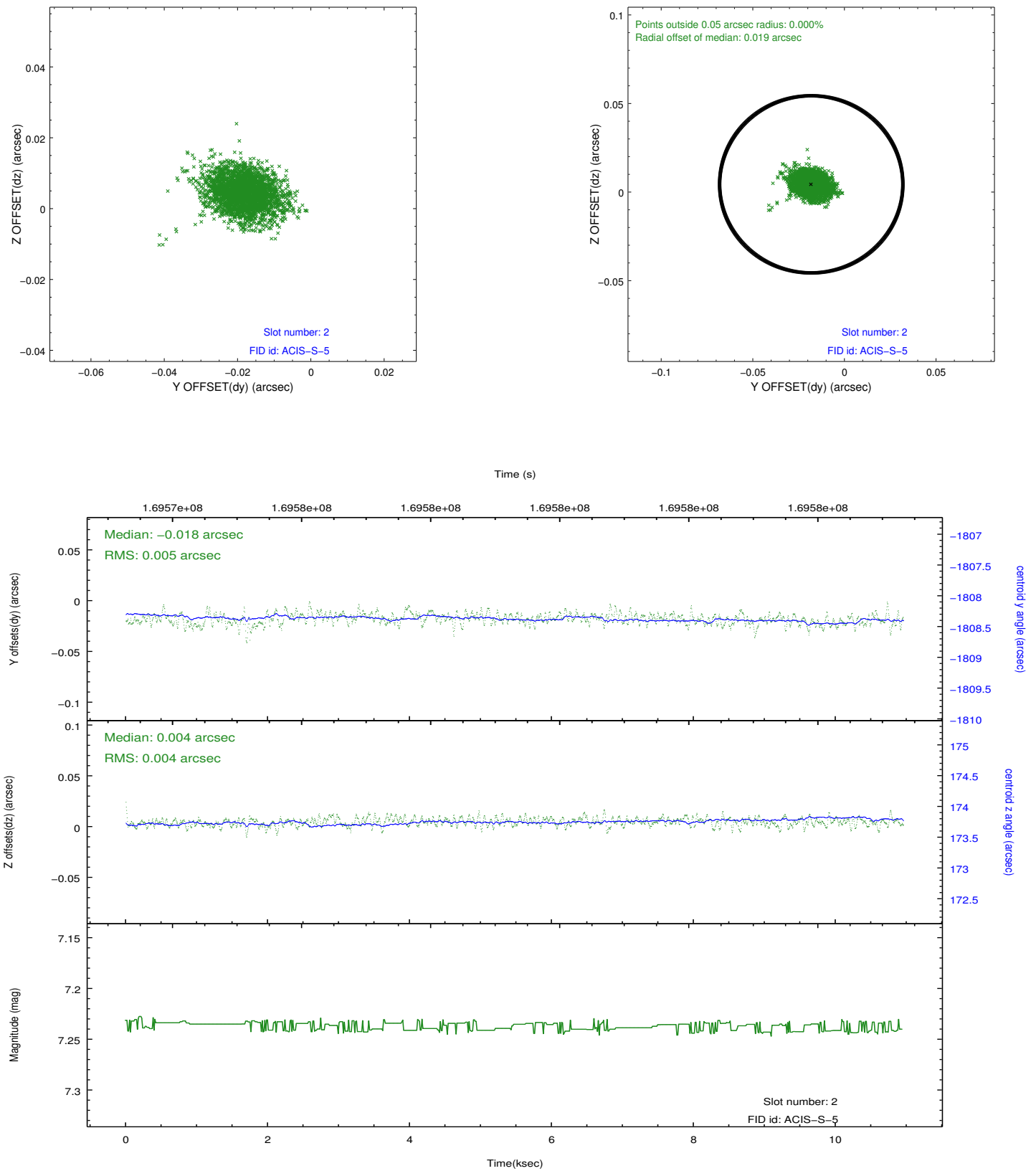
2.5.1 Slot 0



2.5.2 Slot 1



2.5.3 Slot 2



A Summary

A.1 Status

V&V Scientist	Jen Lauer
V&V Date (YYYY-MM-DD)	2012.11.15
V&V Edition	1
V&V Disposition and Status	OK
V&V Charge Time	10.95

A.2 Comments