

V&V Reference Report

L2 ASCDS Version : 8.4.5

Observation 3565 - L2 Version 4
Chandra X-Ray Center

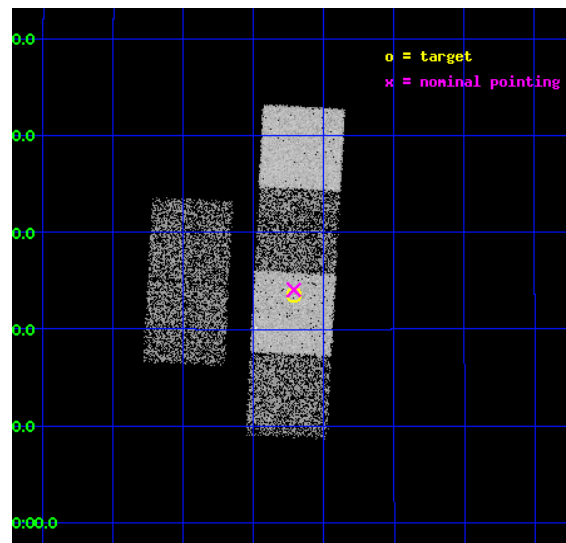
L2 Processing Date : Oct 24 2012

Contents

1	Front	2
2	OBI	3
2.1	OBI	3
2.1.1	Images	3
2.1.2	Bias	3
2.1.3	Parameters	4
2.1.4	Events	4
2.2	Compared Parameters	5
2.3	Aspect	6
2.4	Star Slots	9
2.4.1	Slot 3	9
2.4.2	Slot 4	10
2.4.3	Slot 5	11
2.4.4	Slot 6	12
2.4.5	Slot 7	13
2.5	FID Slots	14
2.5.1	Slot 0	14
2.5.2	Slot 1	15
2.5.3	Slot 2	16
A	Summary	17
A.1	Status	17
A.2	Comments	17

1 Front

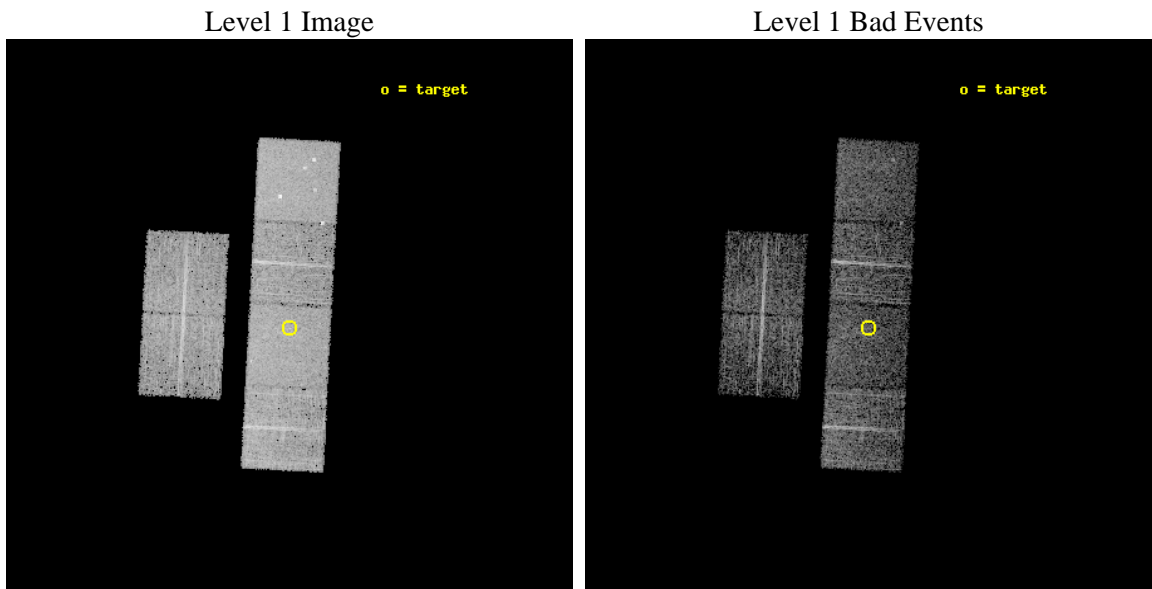
seq_num	700627	Sequence number
obs_id	3565	Observation id
title	A CHANDRA SURVEY OF LUMINOUS, RADIO-DETECTED QUASARS AT $Z > 4$	Prop
observer	Professor Gordon Garmire	Principal investigator
object	J 132512+112329	Source name
dtcycle	0	
cycle	P	events from which exps? Prim/Second/Both
ra_targ	201.302083	Observer's specified target RA [deg]
dec_targ	11.391611	Observer's specified target Dec [deg]
ra_nom	201.30325760702	Nominal RA [deg]
dec_nom	11.401117802699	Nominal Dec [deg]
roll_nom	93.025825812031	Nominal Roll [deg]
revision	4	Processing version of data
ontime	4760.812135309	Sum of GTIs [s]
livetime	4700.5278654348	Livetime [s]
ontime2	4760.8531753123	Sum of GTIs [s]
ontime3	4760.689035207	Sum of GTIs [s]
ontime5	4760.7711152136	Sum of GTIs [s]
ontime6	4760.7300752103	Sum of GTIs [s]
ontime7	4760.812135309	Sum of GTIs [s]
ontime8	4757.4069153965	Sum of GTIs [s]
l2events	48589	Number of level 2 events



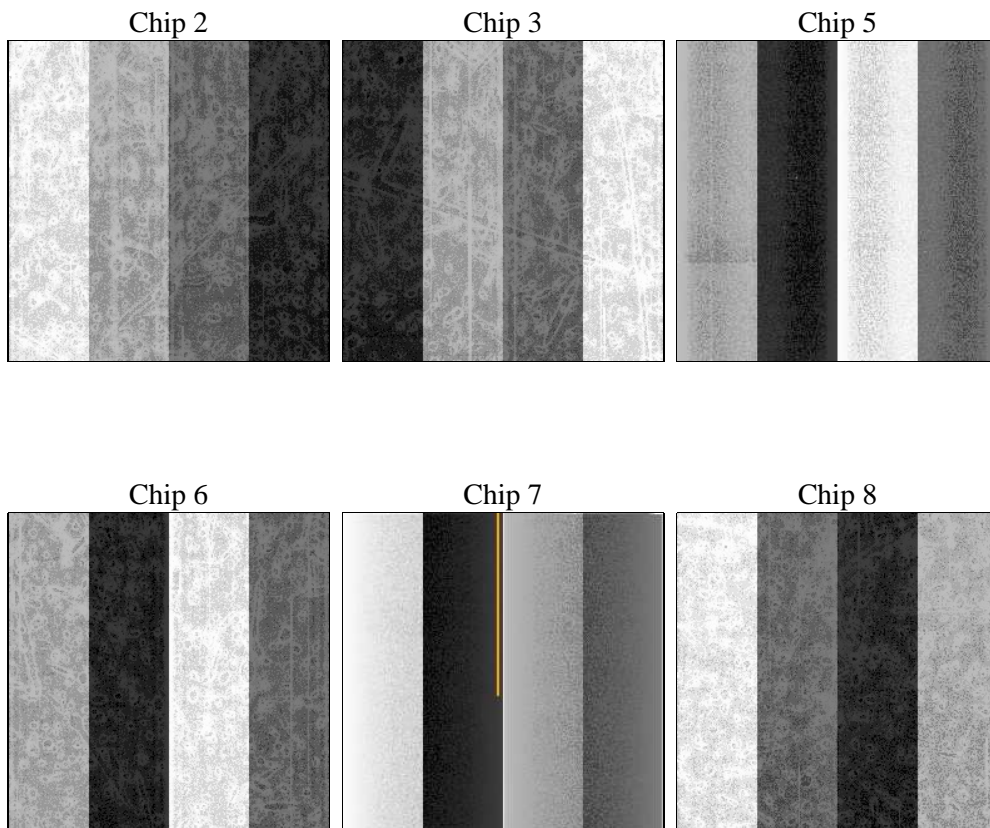
2 OBI

2.1 OBI

2.1.1 Images



2.1.2 Bias



2.1.3 Parameters

obi_num	2	Obi number	sched_exp_time	5000.000000	[s] Scheduled observation exposure time
ascdsver	8.4.5	Processing system revision	ontime	4760.812135309	Sum of GTIs [s]
caldsver	4.5.2	 	ontime2	4760.8531753123	Sum of GTIs [s]
date	2012-10-24T12:50:23	Date and time of file creation	ontime3	4760.689035207	Sum of GTIs [s]
revision	4	Processing version of data	ontime5	4760.7711152136	Sum of GTIs [s]
			ontime6	4760.7300752103	Sum of GTIs [s]
			ontime7	4760.812135309	Sum of GTIs [s]
			ontime8	4757.4069153965	Sum of GTIs [s]
			l1events	219501	Number of level 1 events

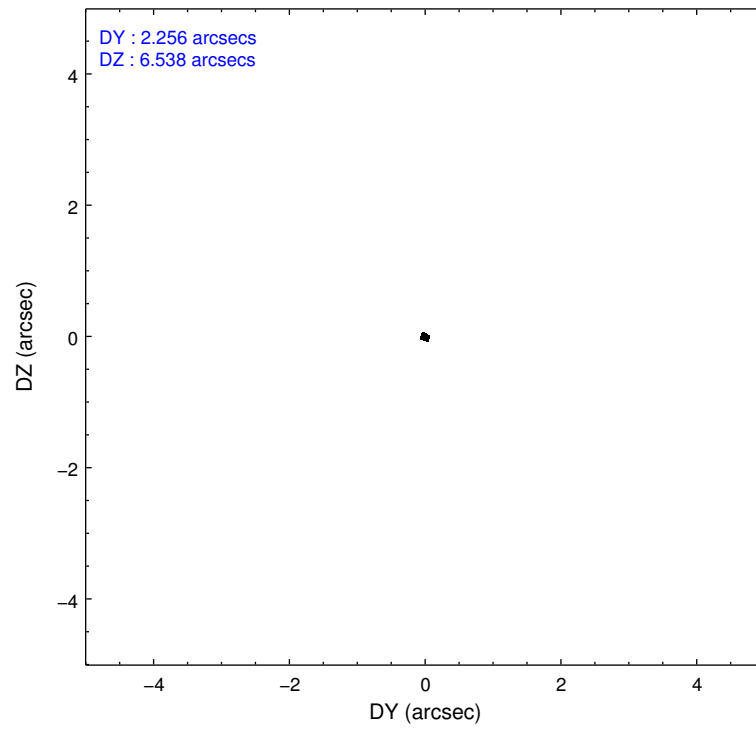
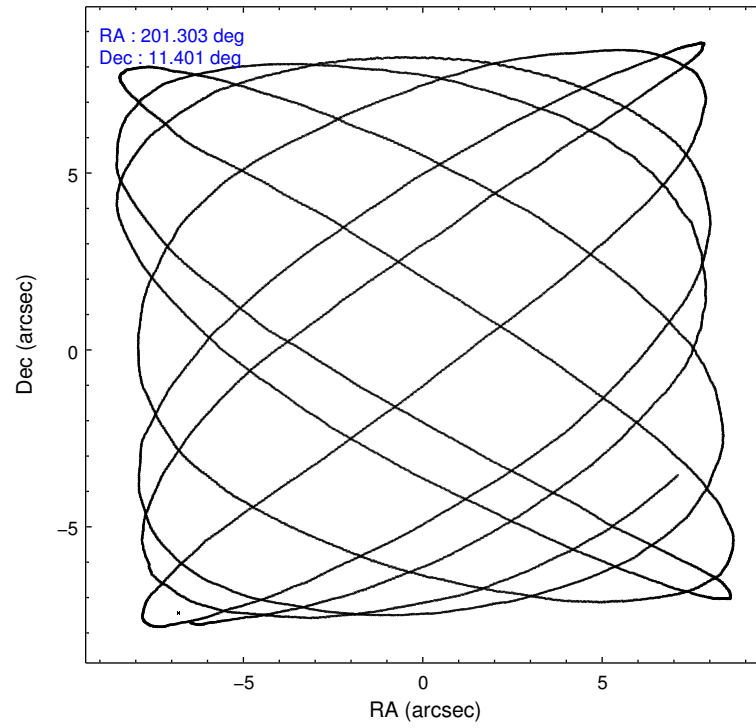
2.1.4 Events

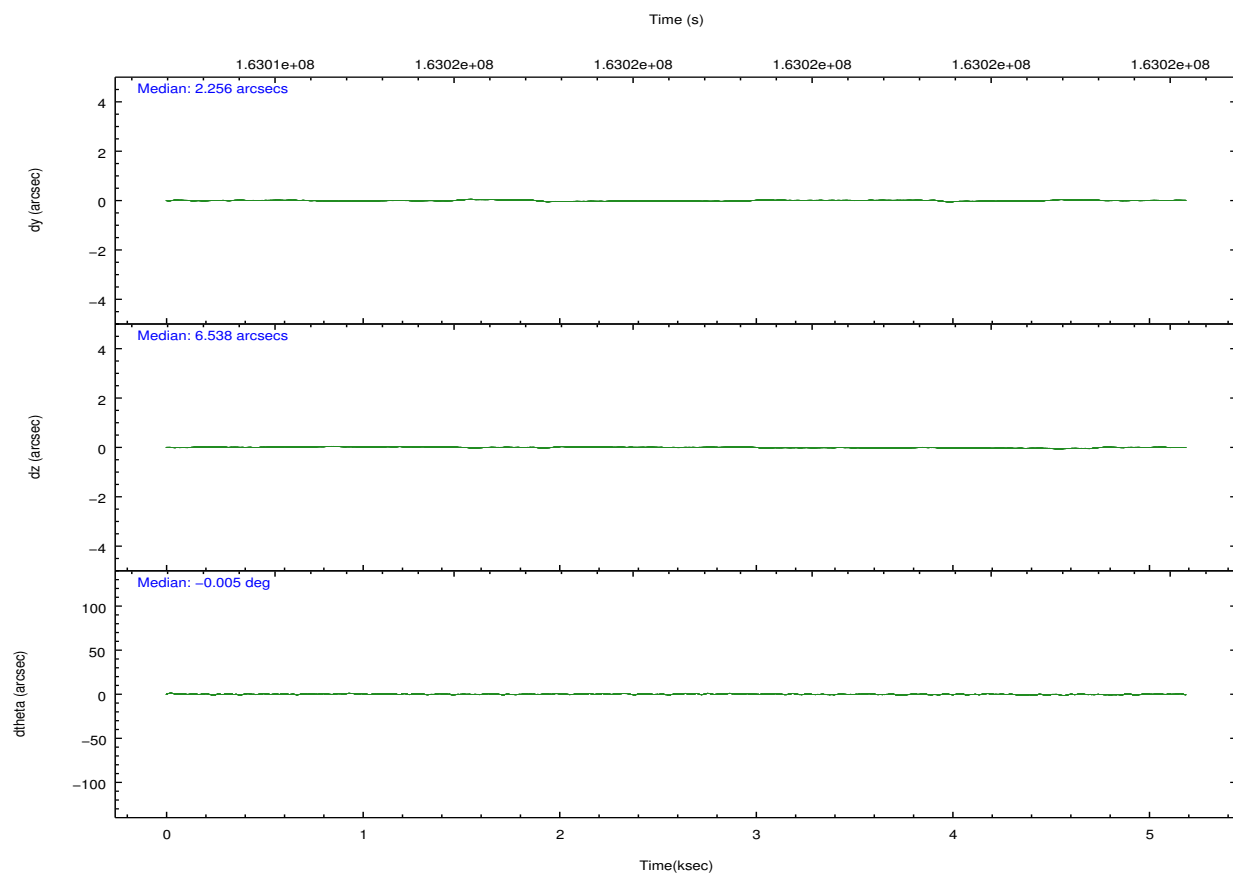
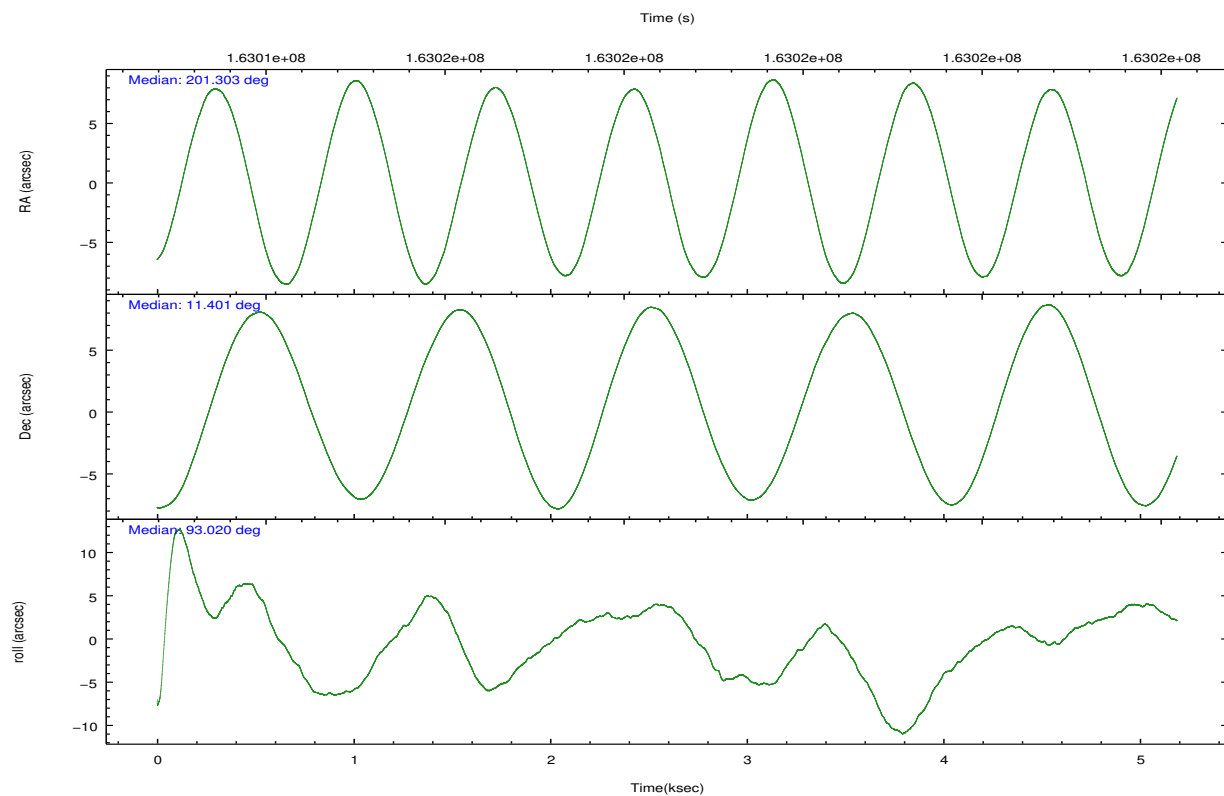
	ccd 2	ccd 3	ccd 5	ccd 6	ccd 7	ccd 8		ccd 2	ccd 3	ccd 5	ccd 6	ccd 7	ccd 8
level 1 events	29864	29621	46043	31878	40581	41514	grade 0 events	1589	1548	2965	1478	1715	2543
rejected events	26251	26176	24437	28270	23408	33704		5%	5%	6%	4%	4%	6%
rejected %	87%	88%	53%	88%	57%	81%	grade 1 events	15	22	109	19	34	30
								0%	0%	0%	0%	0%	0%
							grade 2 events	718	649	6190	712	3406	1650
								2%	2%	13%	2%	8%	3%
							grade 3 events	357	317	879	342	1584	848
								1%	1%	1%	1%	3%	2%
							grade 4 events	335	349	842	332	1513	797
								1%	1%	1%	1%	3%	1%
							grade 5 events	1134	1284	3320	1369	3777	1706
								3%	4%	7%	4%	9%	4%
							grade 6 events	616	584	10745	747	8965	1974
								2%	1%	23%	2%	22%	4%
							grade 7 events	25100	24868	20993	26879	19587	31966
								84%	83%	45%	84%	48%	77%

2.2 Compared Parameters

Parameter	Planned	Actual	Parameter	Planned	Actual
Instrument	ACIS	ACIS	Obspar format version number	7	7
Detector	ACIS-235678	ACIS-235678	Obspar file type	PREDICTED	ACTUAL
Grating	NONE	NONE	Obspar update status	NONE	UPDATED
Data mode	FAINT	FAINT	Number of optional ACIS chips dropped	0	0
Observation mode	POINTING	POINTING	On-chip summing requested	N	N
[deg] Pointing RA	201.318749	201.3032576070204	Subarray requested	NONE	NONE
[deg] Pointing Dec	11.378584	11.40111780269892	Alternating exposures requested	N	N
[deg] Pointing Roll	92.866141	93.0258258120312	[s] Primary exposure time	0.000000	3.2
[mm] SIM focus pos	-0.684267	-0.6828225247311905			
[mm] SIM defocus	0	0.001444936568705701			
[mm] SIM translation stage pos	-190.132523	-190.1425803651734			
[mm] SIM translation stage offset	0	0.01005778216563158			
[s] Observation start time (MET)	163013833.184000	163013154.4748			
Observation start date	2003-03-02T17:36:09	2003-03-02T17:25:54			
[s] Observation end time (MET)	163018833.184000	163019260.91256			
Observation end date	2003-03-02T18:59:29	2003-03-02T19:07:40			
Read mode	TIMED	TIMED			

2.3 Aspect



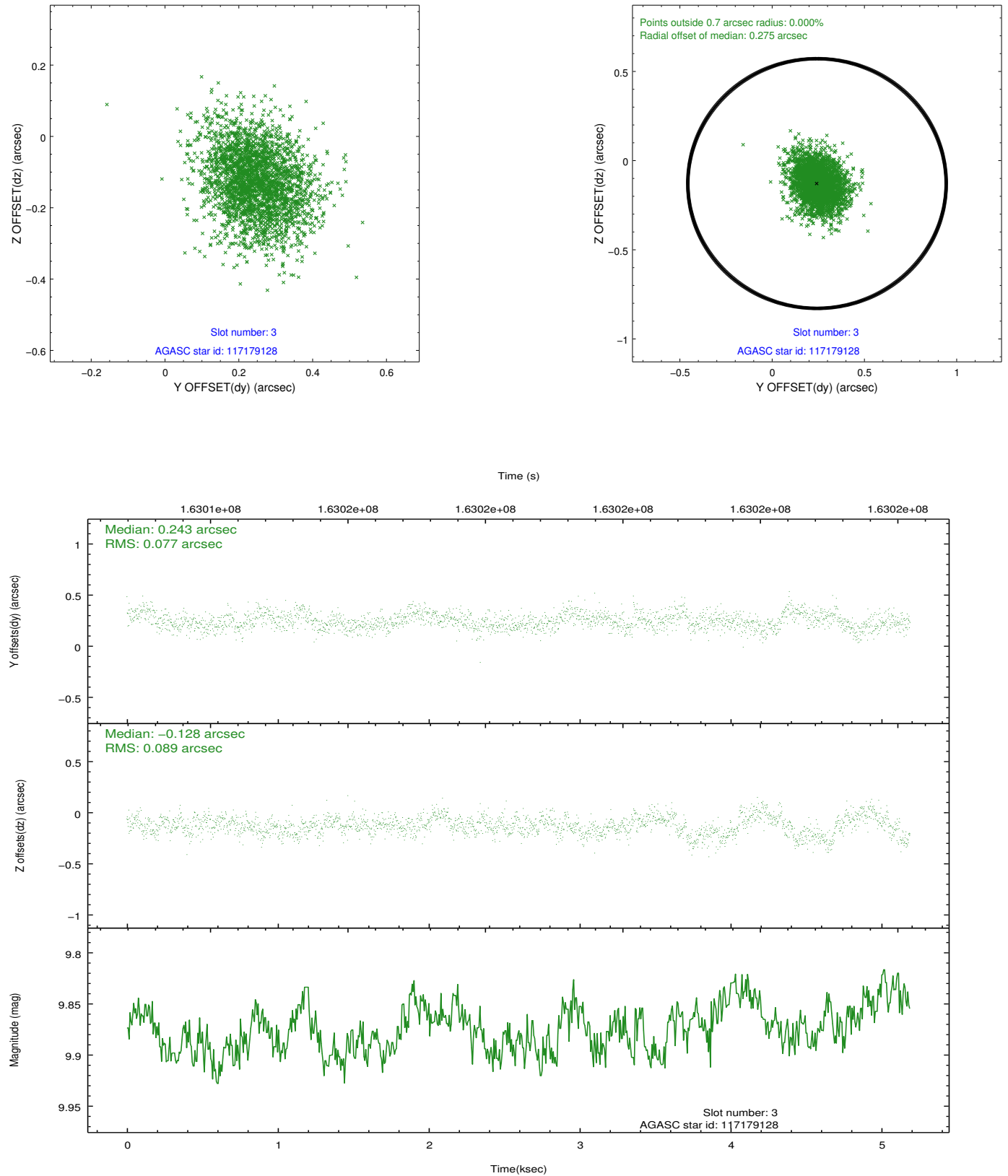


Slot Statistics

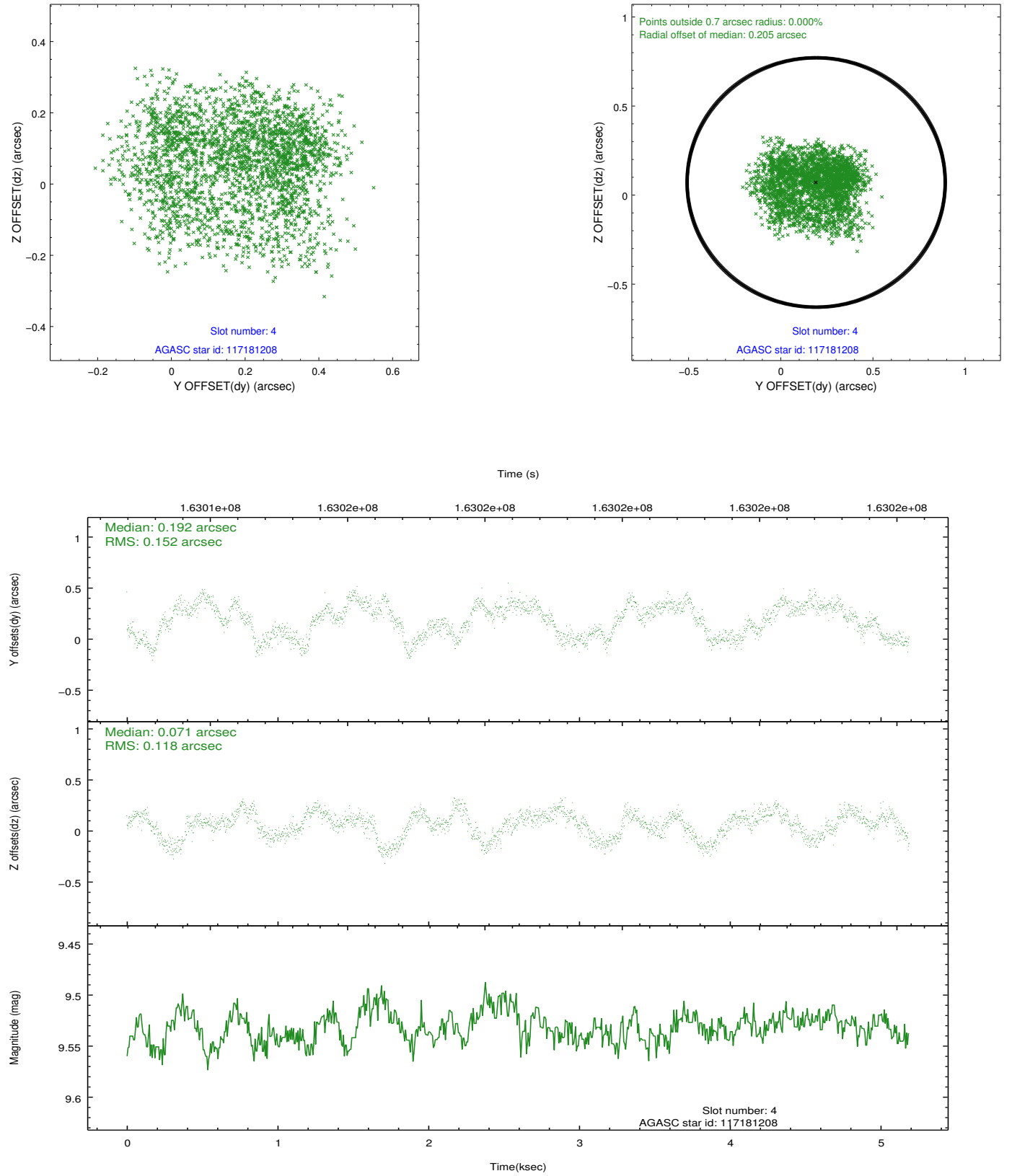
slot	status	id	mag	n_pts	med_dy	med_dz	dr1	dr2	ra	dec	mean_y	mean_z
0	FID	ACIS-S-2	7.11	1266	-0.043	0.006	0.006	0.011	0.000000	0.000000	-754.89	-1727.64
1	FID	ACIS-S-4	7.21	1266	-0.004	0.019	0.005	0.010	0.000000	0.000000	2157.87	179.70
2	FID	ACIS-S-5	7.24	1266	0.016	-0.016	0.006	0.011	0.000000	0.000000	-1806.20	174.59
3	GUIDE	117179128	9.88	2529	0.243	-0.128	0.123	0.206	201.219977	10.740563	-2275.67	463.63
4	GUIDE	117181208	9.53	2521	0.192	0.071	0.212	0.313	201.637895	10.902941	-1766.21	-1040.45
5	GUIDE	117182792	8.03	2532	-0.131	-0.162	0.085	0.131	201.169454	11.396928	92.09	522.59
6	GUIDE	117310040	8.45	2531	-0.077	0.095	0.119	0.181	201.745584	11.908554	1832.17	-1596.54
7	GUIDE	117309544	10.12	2527	-0.223	0.136	0.146	0.240	201.990867	11.707410	1067.86	-2425.86

2.4 Star Slots

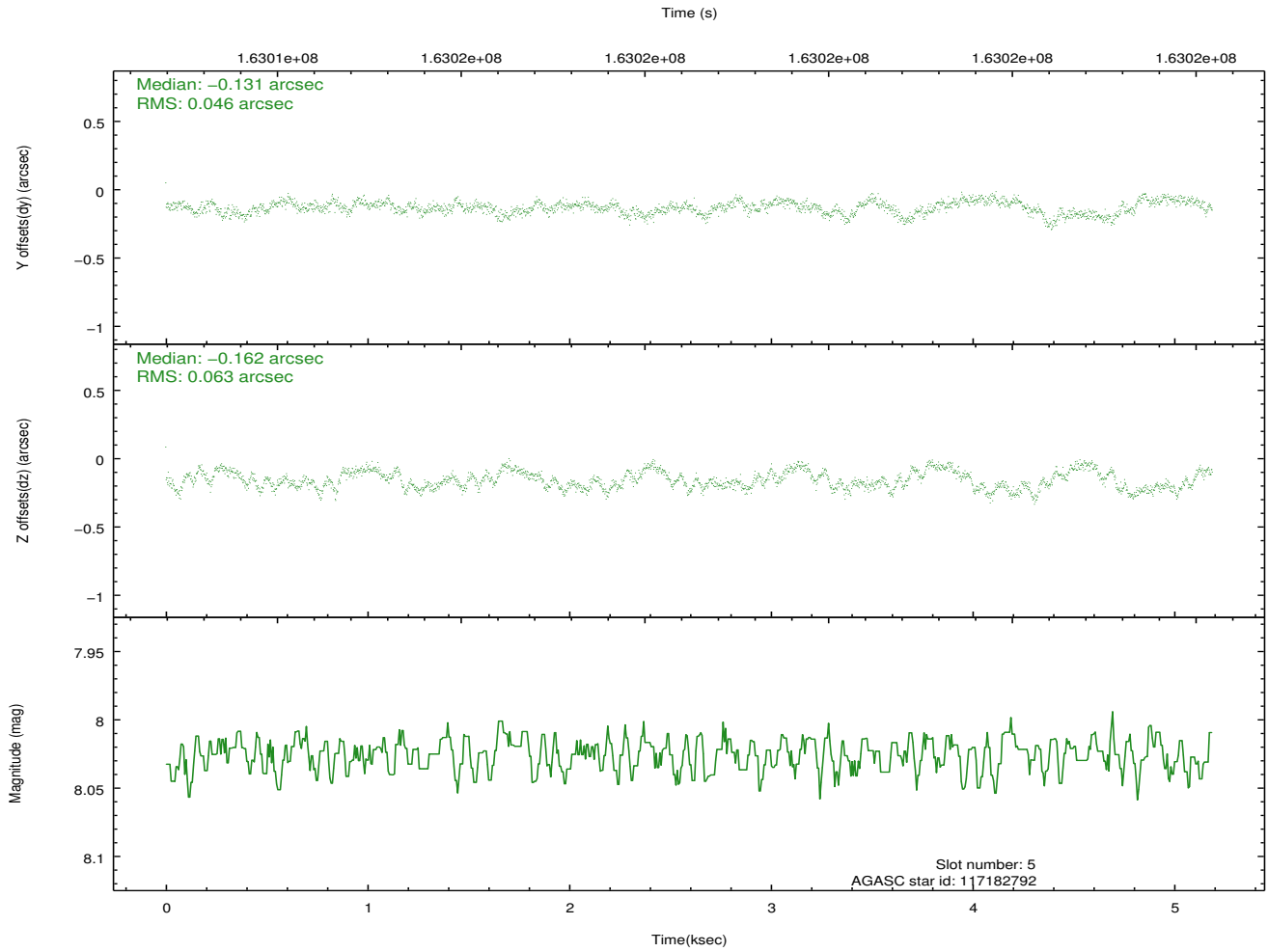
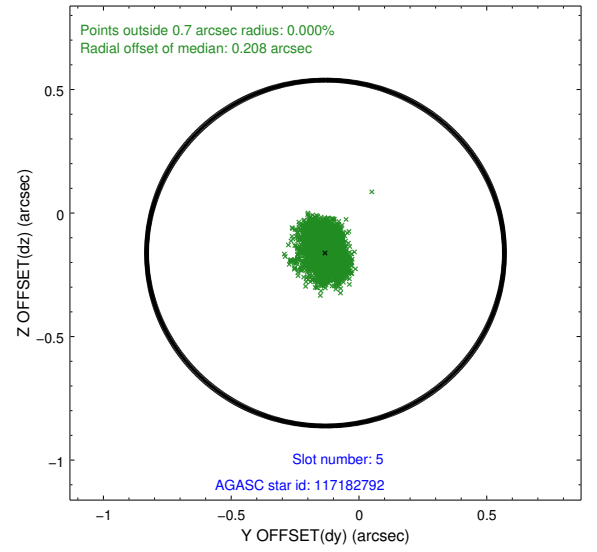
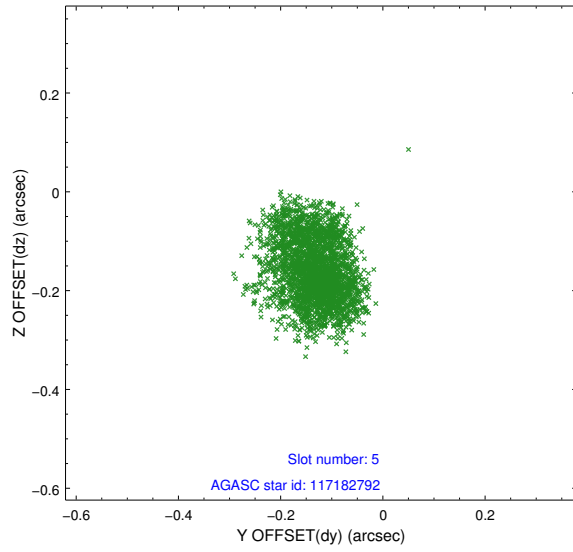
2.4.1 Slot 3



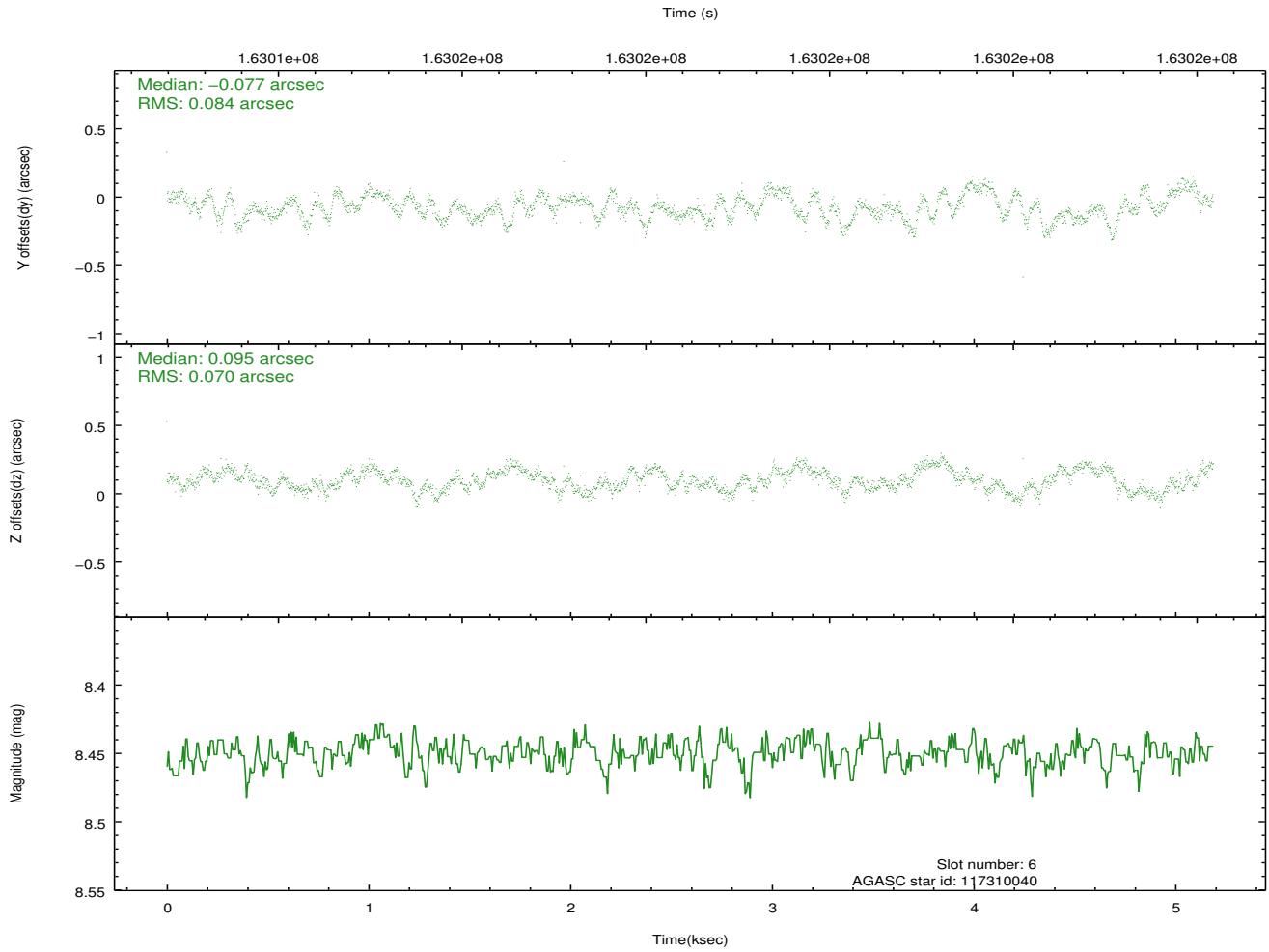
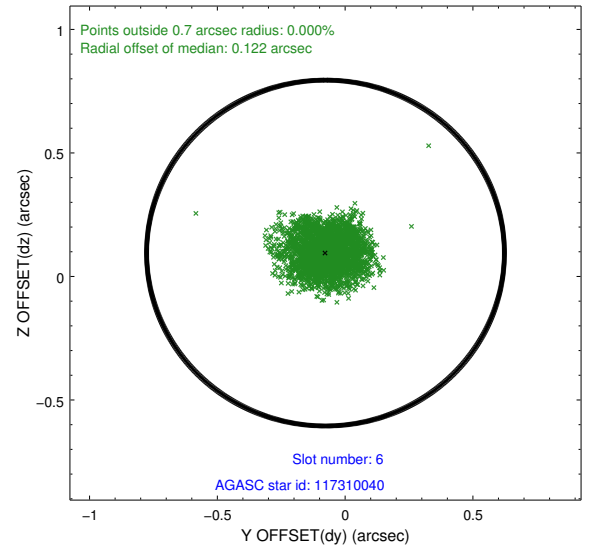
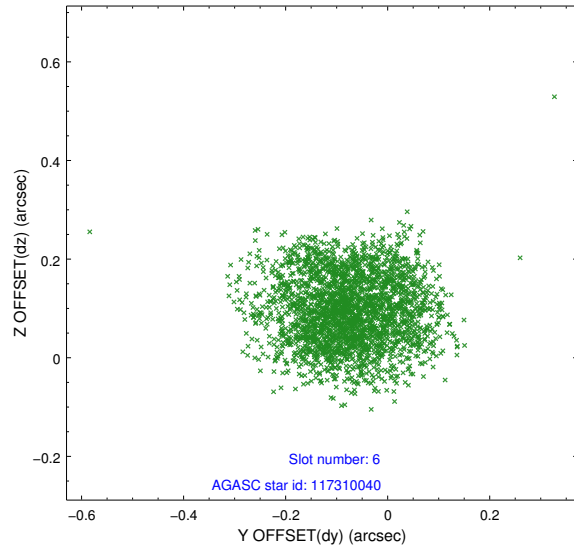
2.4.2 Slot 4



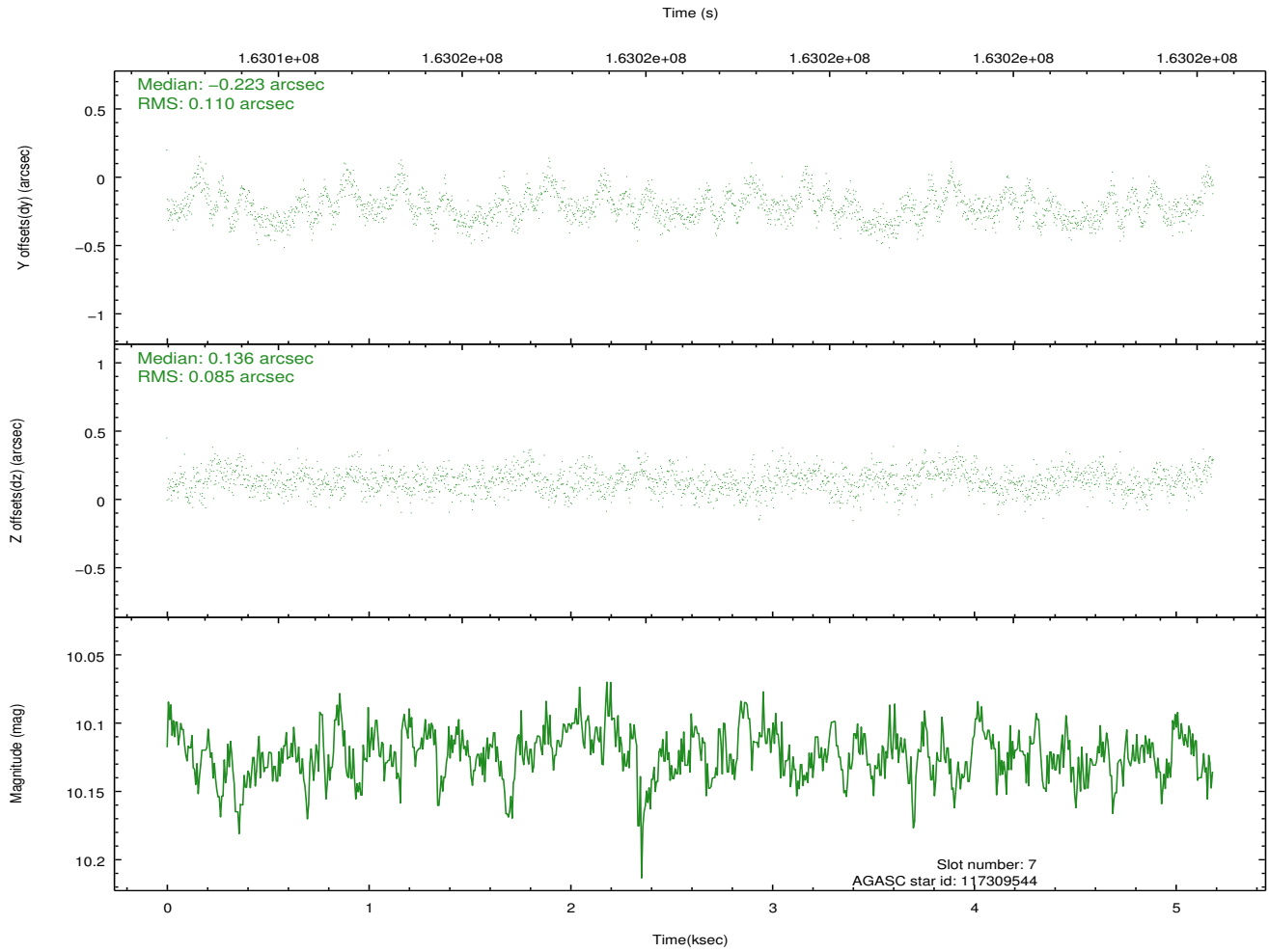
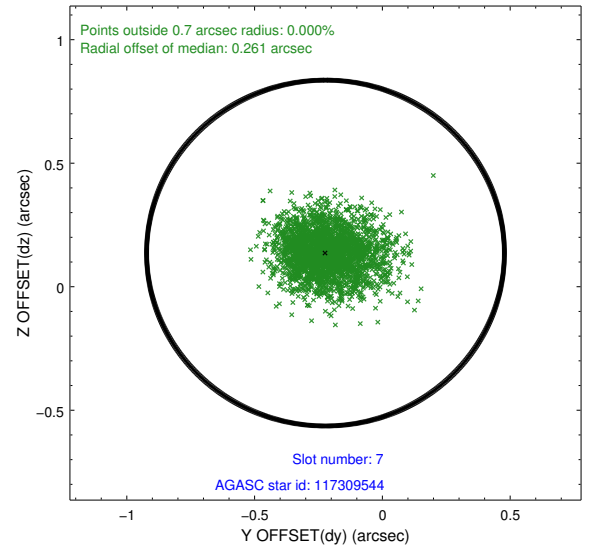
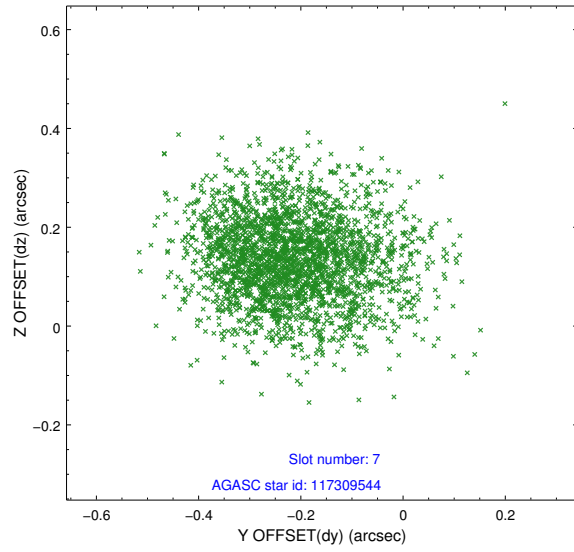
2.4.3 Slot 5



2.4.4 Slot 6

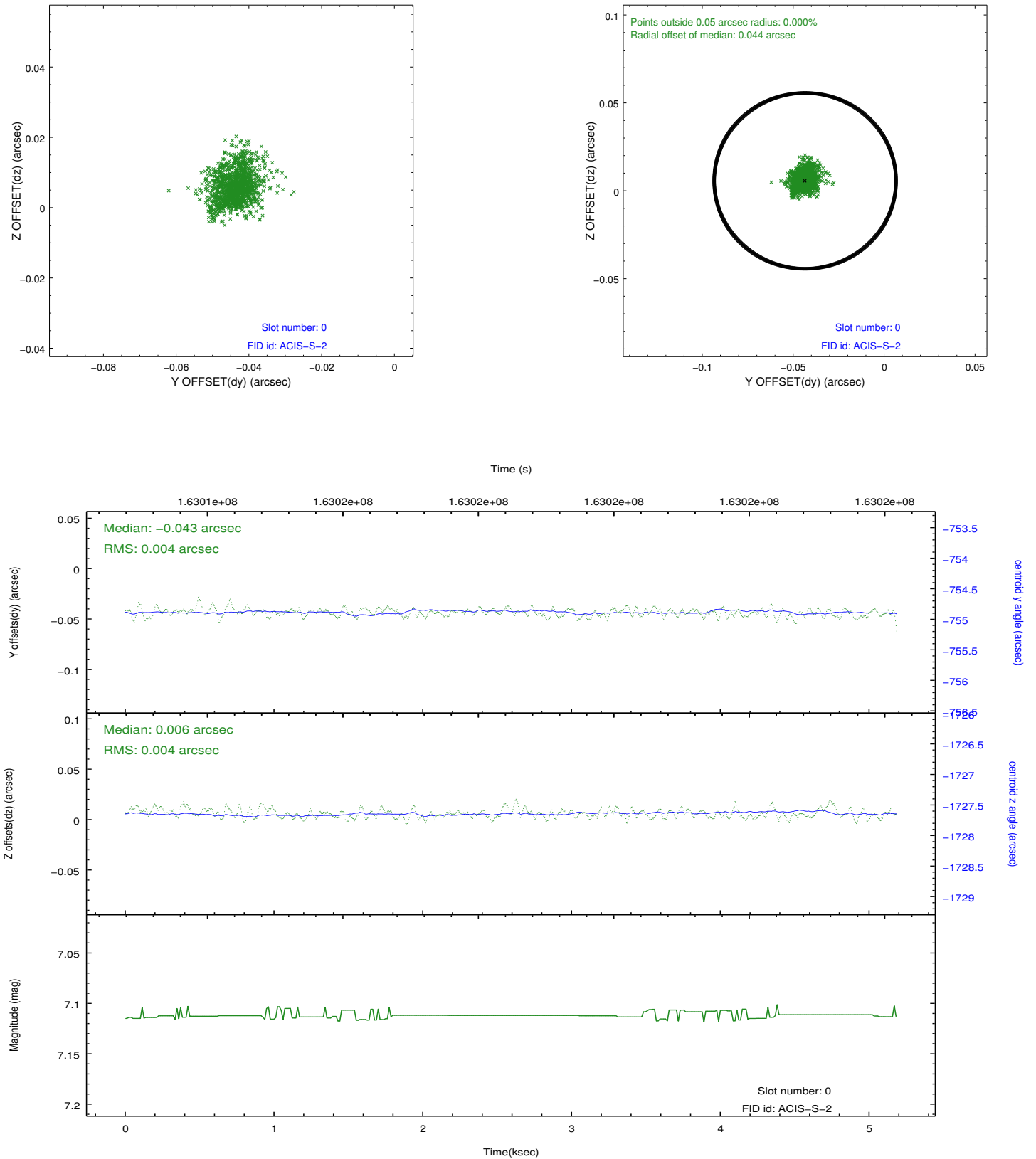


2.4.5 Slot 7

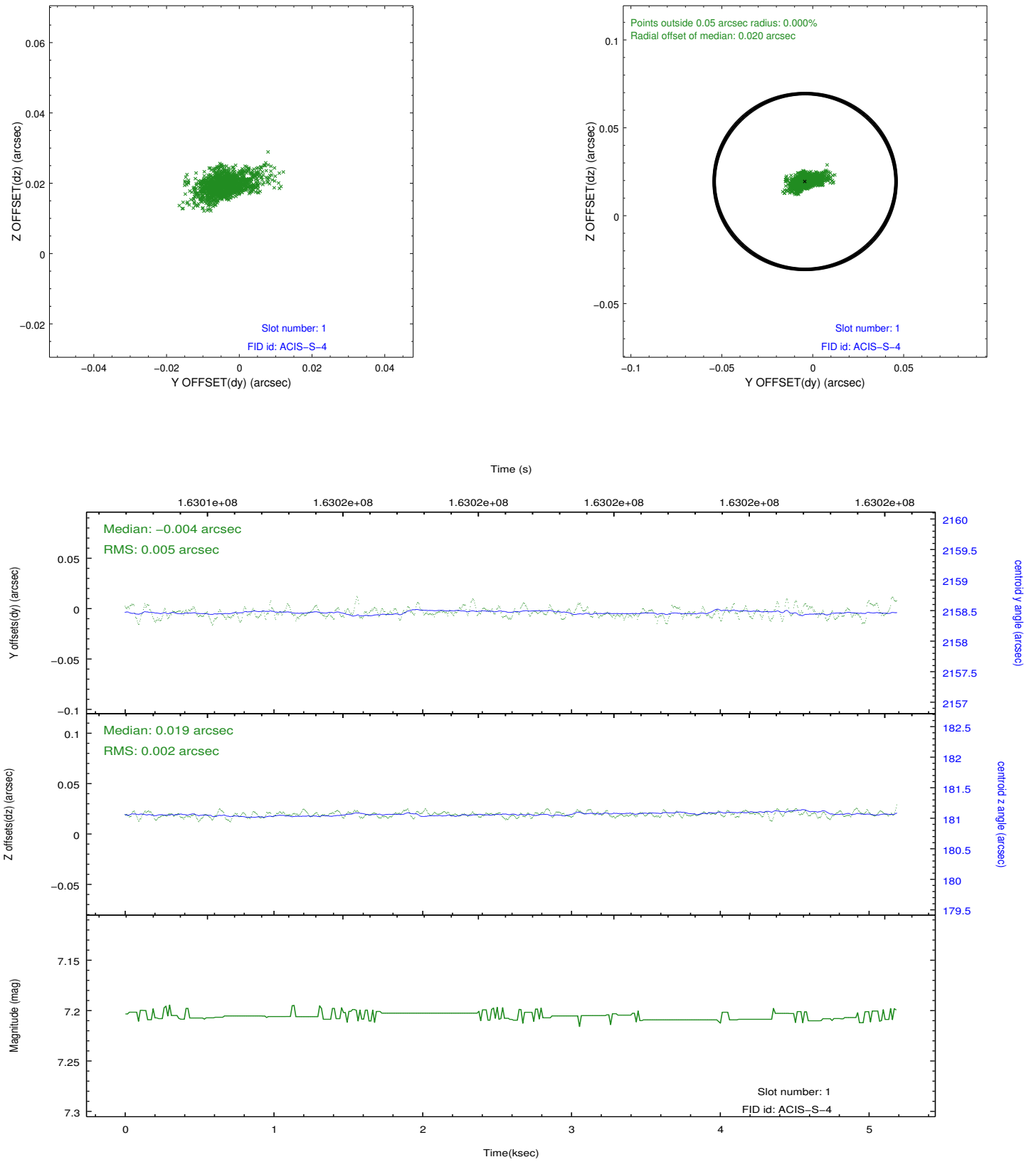


2.5 FID Slots

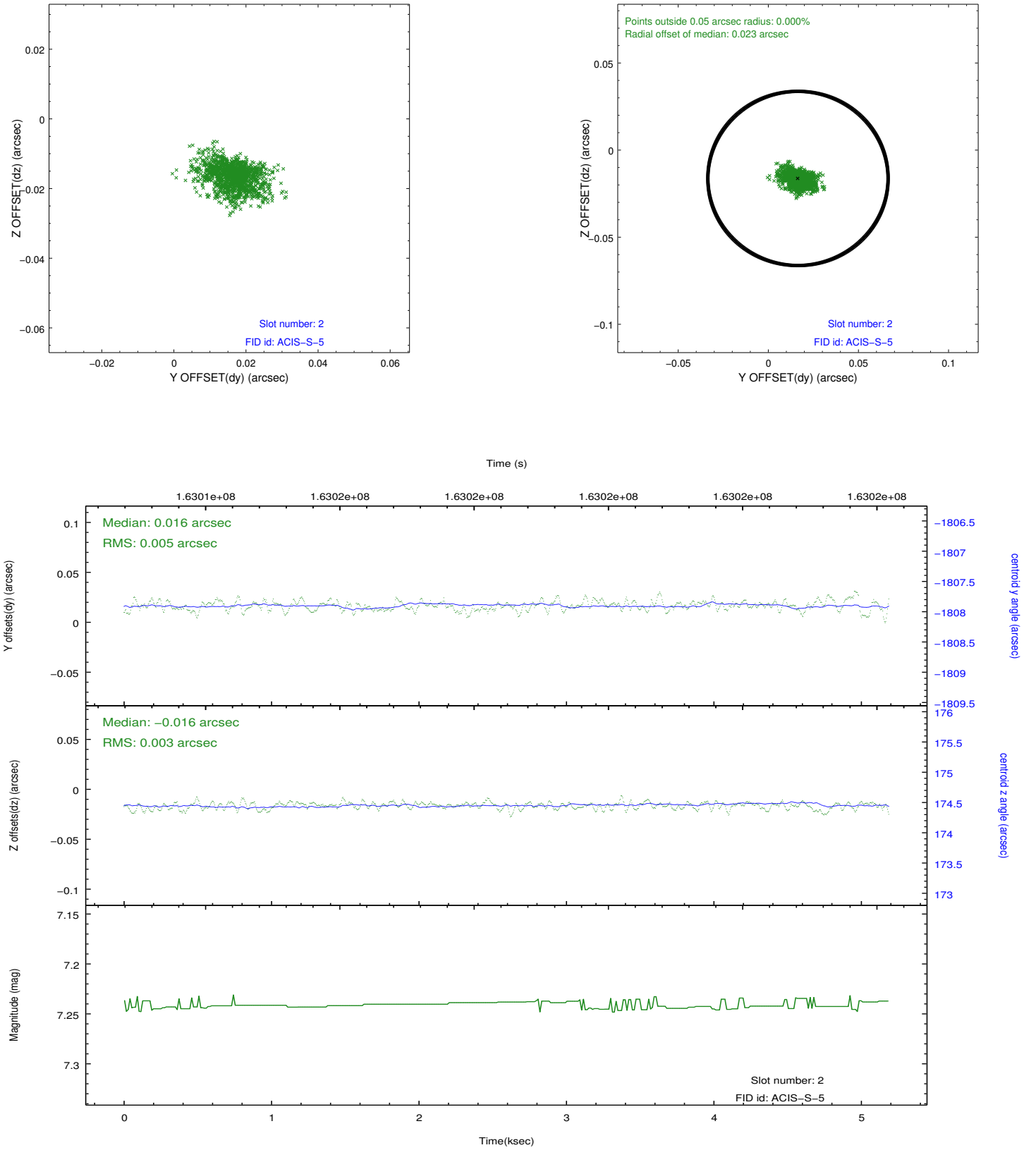
2.5.1 Slot 0



2.5.2 Slot 1



2.5.3 Slot 2



A Summary

A.1 Status

V&V Scientist	Jen Lauer
V&V Date (YYYY-MM-DD)	2012.11.07
V&V Edition	1
V&V Disposition and Status	OK
V&V Charge Time	4.762

A.2 Comments