

V&V Reference Report

L2 ASCDS Version : 7.6.8

Observation 3565 - L2 Version 001
Chandra X-Ray Center

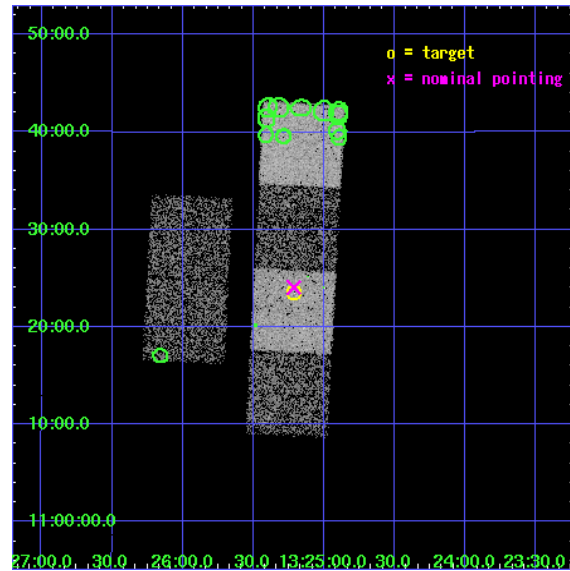
L2 Processing Date : Jul 22 2006

Contents

1	Front	2
2	OBI	3
2.1	OBI	3
2.1.1	Images	3
2.1.2	Bias	3
2.1.3	Parameters	4
2.1.4	Events	4
2.2	Compared Parameters	5
2.3	Aspect	6
2.4	Star Slots	9
2.4.1	Slot 3	9
2.4.2	Slot 4	10
2.4.3	Slot 5	11
2.4.4	Slot 6	12
2.4.5	Slot 7	13
2.5	FID Slots	14
2.5.1	Slot 0	14
2.5.2	Slot 1	15
2.5.3	Slot 2	16
3	Point Sources	17
A	Summary	18
A.1	Status	18
A.2	Comments	18

1 Front

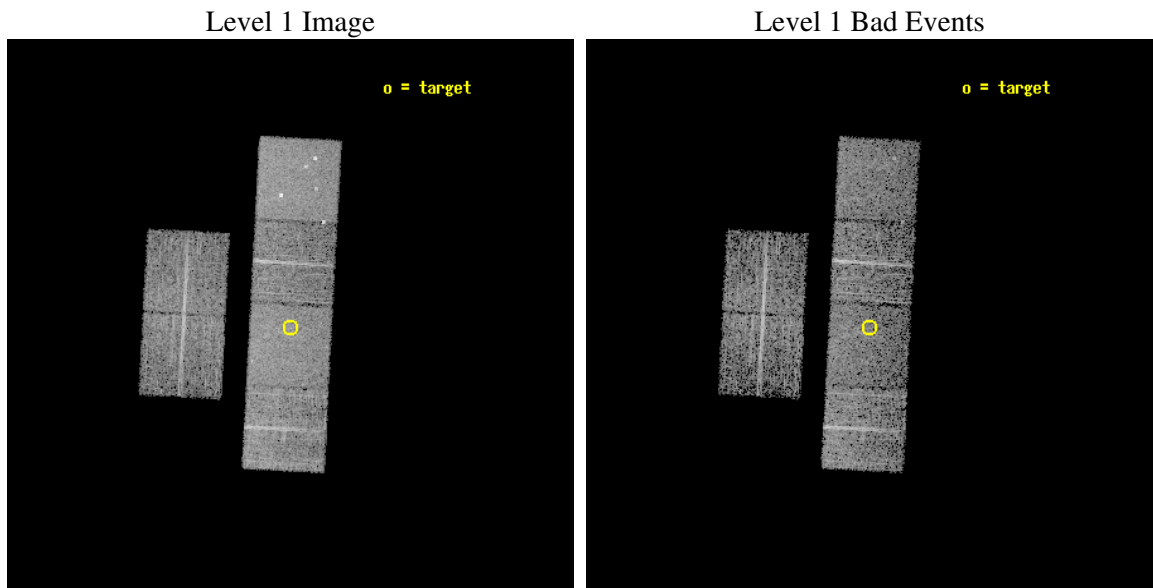
seq_num	700627
obs_id	3565
title	A CHANDRA SURVEY OF LUMINOUS, RADIO-DETECTED QUASARS AT $Z > 4$
observer	Professor Gordon Garmire
object	J 132512+112329
dtcycle	0
cycle	P
ra_targ	201.302083
dec_targ	11.391611
ra_nom	201.30325760702
dec_nom	11.401117802699
roll_nom	93.025825812031
revision	3
ontime	4761.5999822617
livetime	4701.305736195
ontime2	4761.5999822617
ontime3	4761.5999822617
ontime5	4761.5999822617
ontime6	4761.5999822617
ontime7	4761.5999822617
ontime8	4758.3589919806
l2events	46598



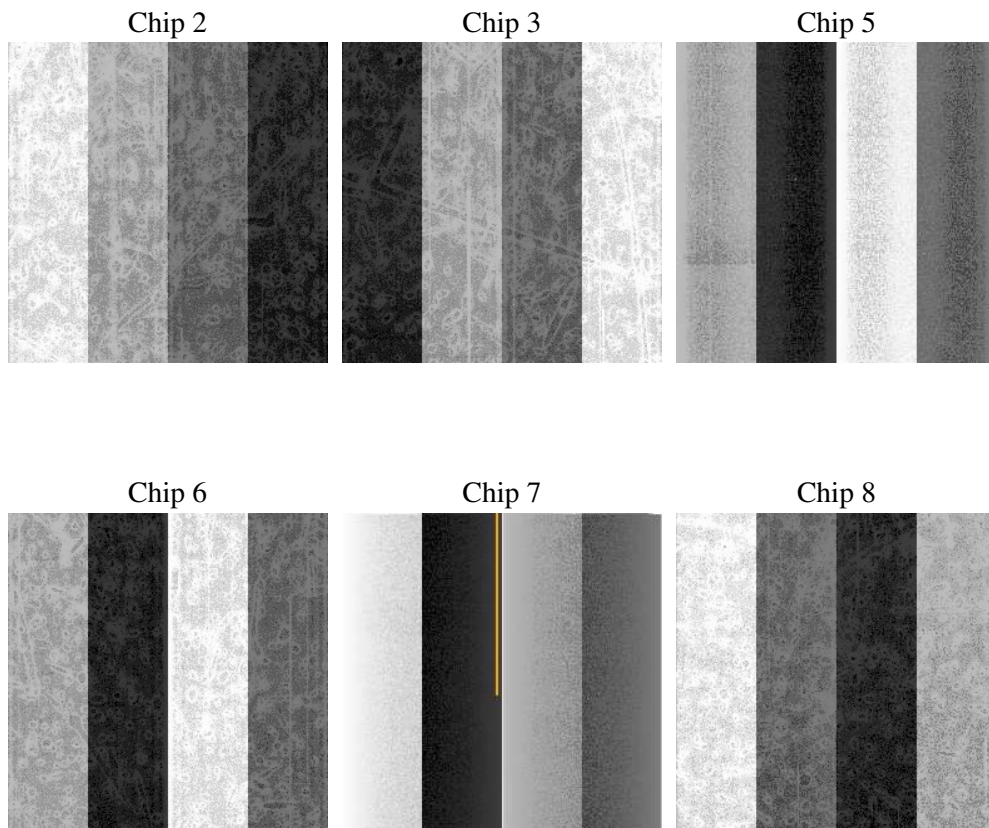
2 OBI

2.1 OBI

2.1.1 Images



2.1.2 Bias



2.1.3 Parameters

obi_num	2
ascdsver	7.6.8
caldsver	3.2.2
date	2006-07-22T12:01:24
revision	3

sched_exp_time	5000.000000
ontime	4764.2844801247
ontime2	4764.2844602168
ontime3	4764.2845000327
ontime5	4764.2845000327
ontime6	4764.2845000327
ontime7	4764.2844801247
ontime8	4761.0434201956
l1events	219501

2.1.4 Events

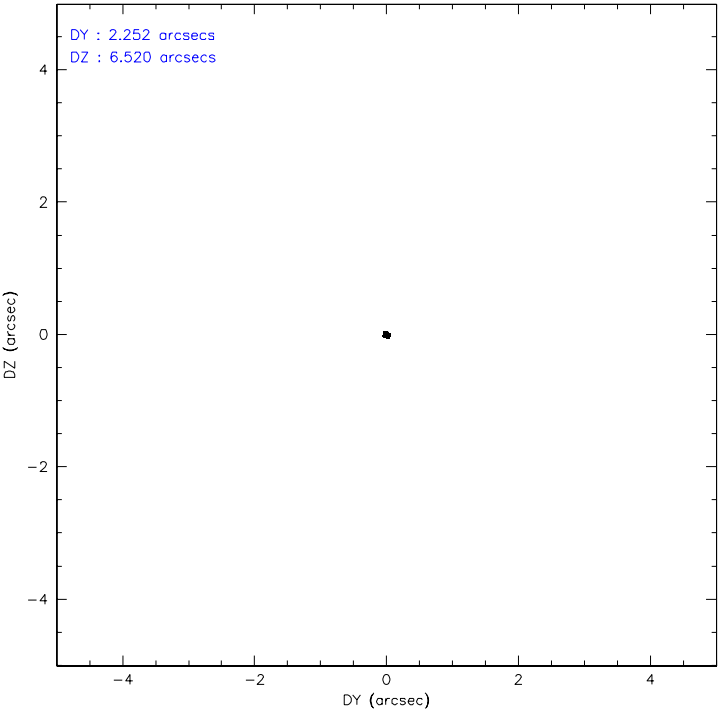
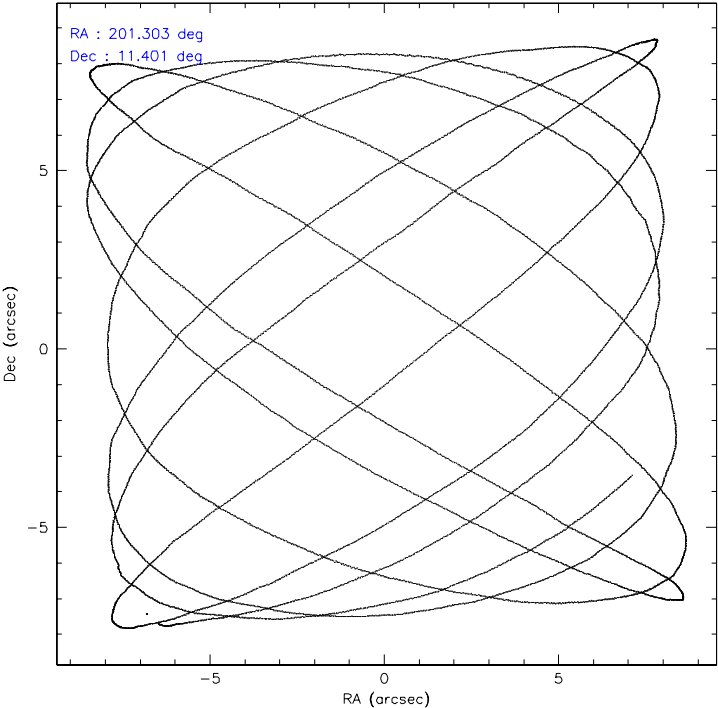
	ccd 2	ccd 3	ccd 5	ccd 6	ccd 7	ccd 8
level 1 events	29864	29621	46043	31878	40581	41514
rejected events	26251	26176	25143	28269	24781	33704
rejected %	87%	88%	54%	88%	61%	81%

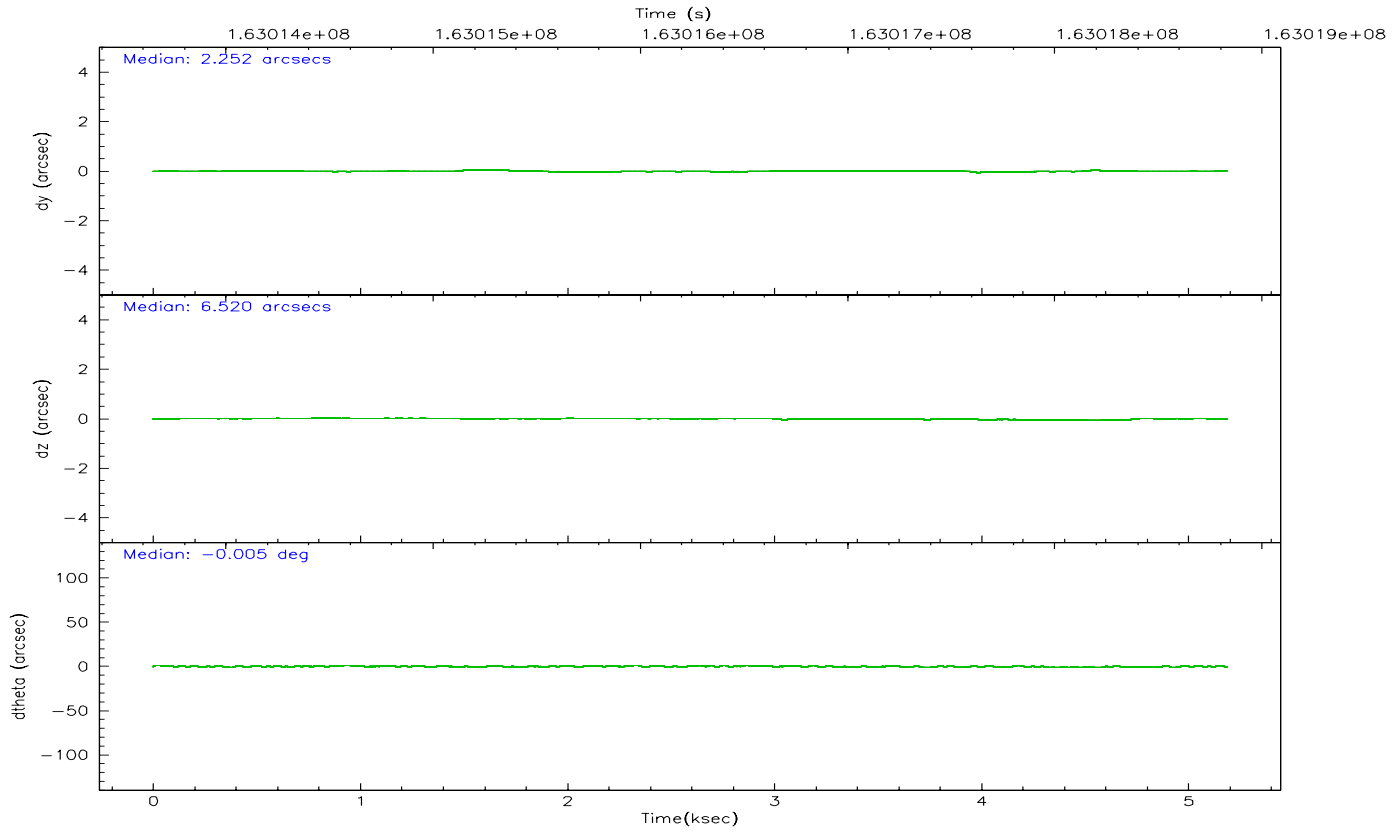
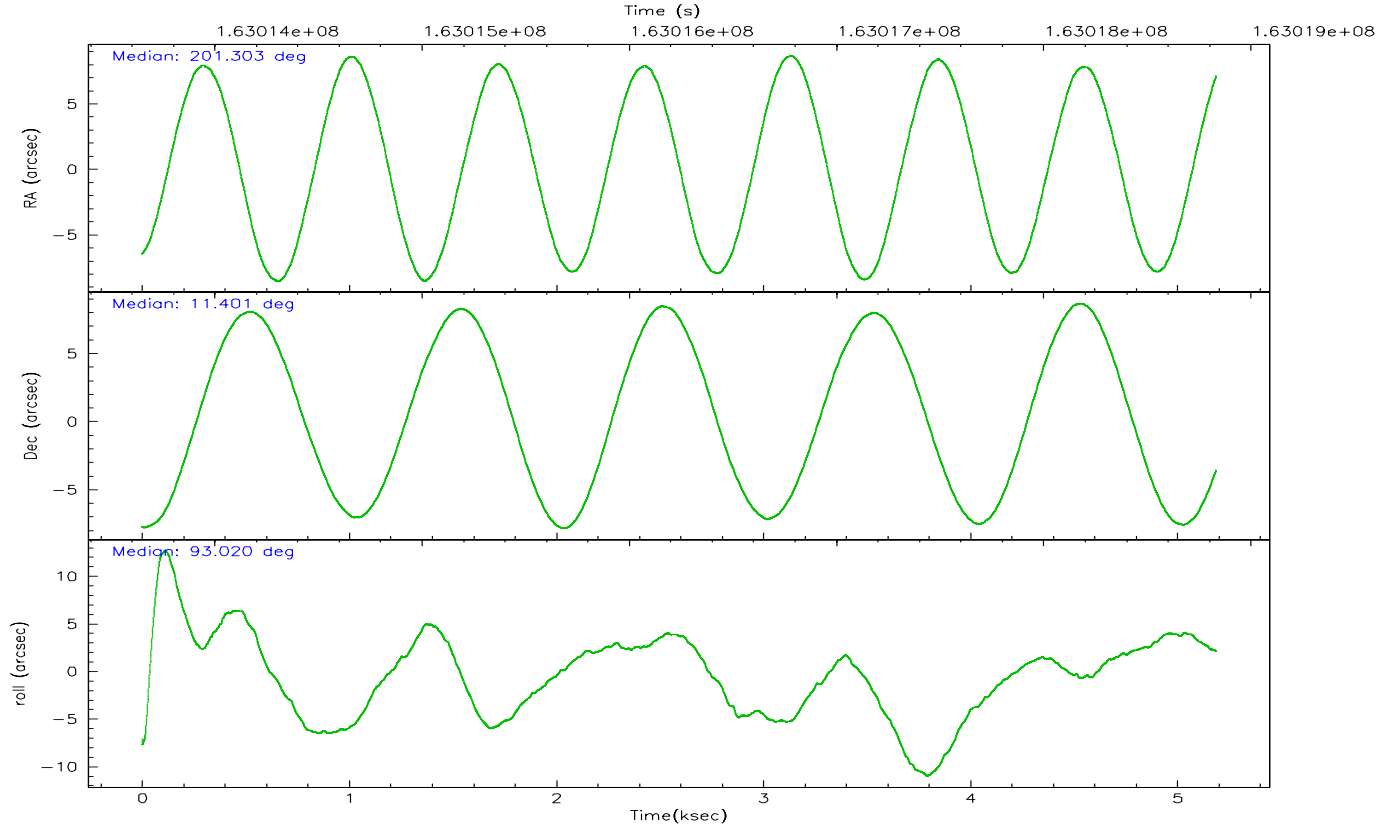
	ccd 2	ccd 3	ccd 5	ccd 6	ccd 7	ccd 8
grade 0 events	1588	1548	2460	1478	1033	2543
	5%	5%	5%	4%	2%	6%
grade 1 events	15	22	82	19	21	30
	0%	0%	0%	0%	0%	0%
grade 2 events	719	649	6261	712	3937	1650
	2%	2%	13%	2%	9%	3%
grade 3 events	357	317	497	342	806	846
	1%	1%	1%	1%	1%	2%
grade 4 events	335	349	456	332	833	796
	1%	1%	0%	1%	2%	1%
grade 5 events	1134	1284	2220	1367	2528	1705
	3%	4%	4%	4%	6%	4%
grade 6 events	616	584	11241	748	9201	1977
	2%	1%	24%	2%	22%	4%
grade 7 events	25100	24868	22826	26880	22222	31967
	84%	83%	49%	84%	54%	77%

2.2 Compared Parameters

Parameter	Planned	Actual	Parameter	Planned	Actual
Instrument	ACIS	ACIS	Obspar format version number	6	6
Detector	ACIS-235678	ACIS-235678	Obspar file type	PREDICTED	ACTUAL
Grating	NONE	NONE	Obspar update status	NONE	UPDATED
Data mode	FAINT	FAINT	On-chip summing requested	N	N
Observation mode	POINTING	POINTING	Subarray requested	NONE	NONE
Pointing RA	201.318749	201.3032576070205	Alternating exposures requested	N	N
Pointing Dec	11.378584	11.40111780269896	Primary exposure time	0.000000	3.2
Pointing Roll	92.866141	93.0258258120312			
SIM focus pos (mm)	-0.684267	-0.6828225247311905			
SIM defocus (mm)	0	0.001444936568705701			
SIM translation stage pos (mm)	-190.132523	-190.1425803651734			
SIM translation stage offset (mm)	0	0.01005778216563158			
Observation start time	163013833.184000	163013154.4748			
Observation start date	2003-03-02T17:36:09	2003-03-02T17:25:54			
Observation end time	163018833.184000	163019260.91256			
Observation end date	2003-03-02T18:59:29	2003-03-02T19:07:40			
Read mode	TIMED	TIMED			

2.3 Aspect



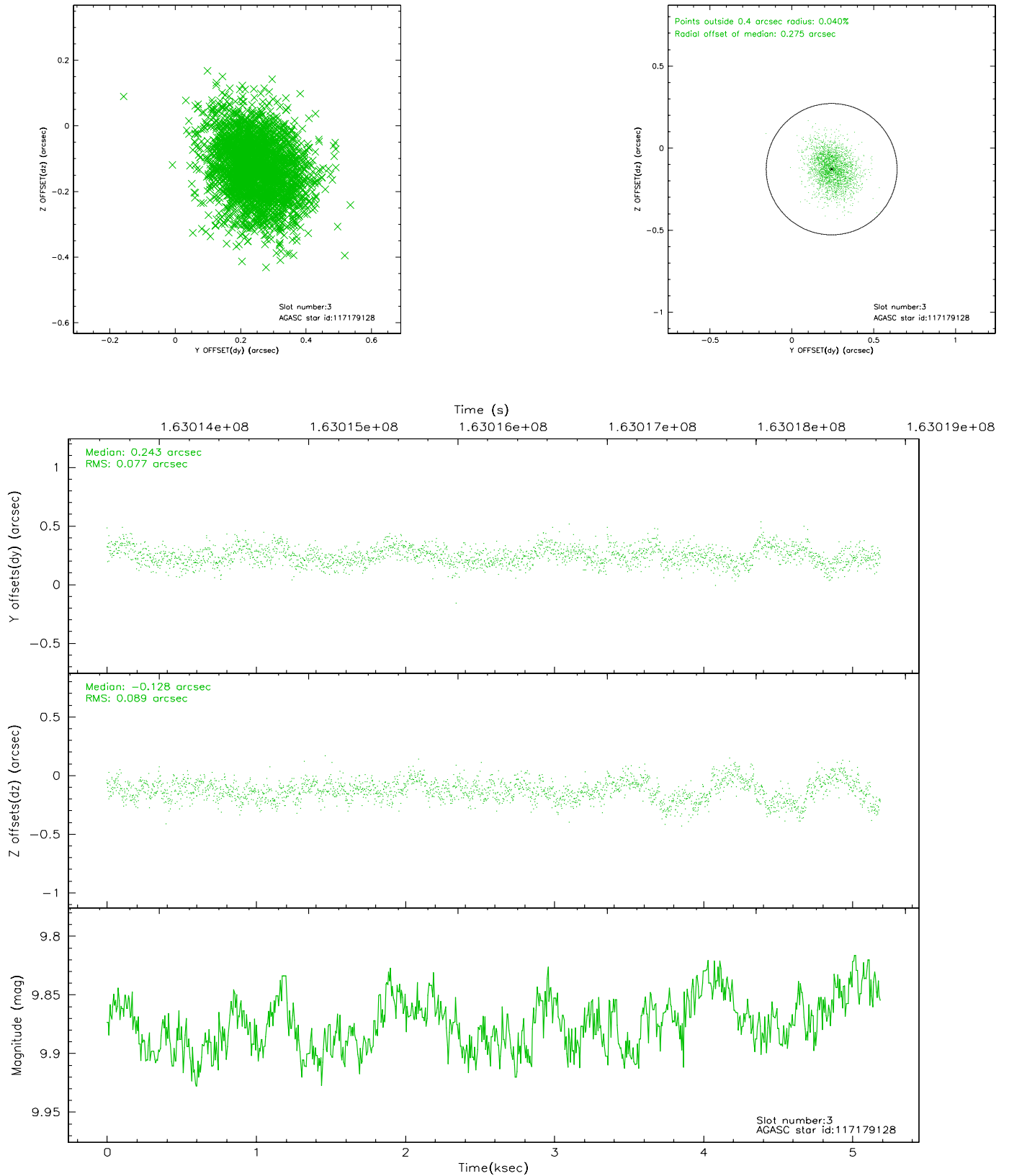


Slot Statistics

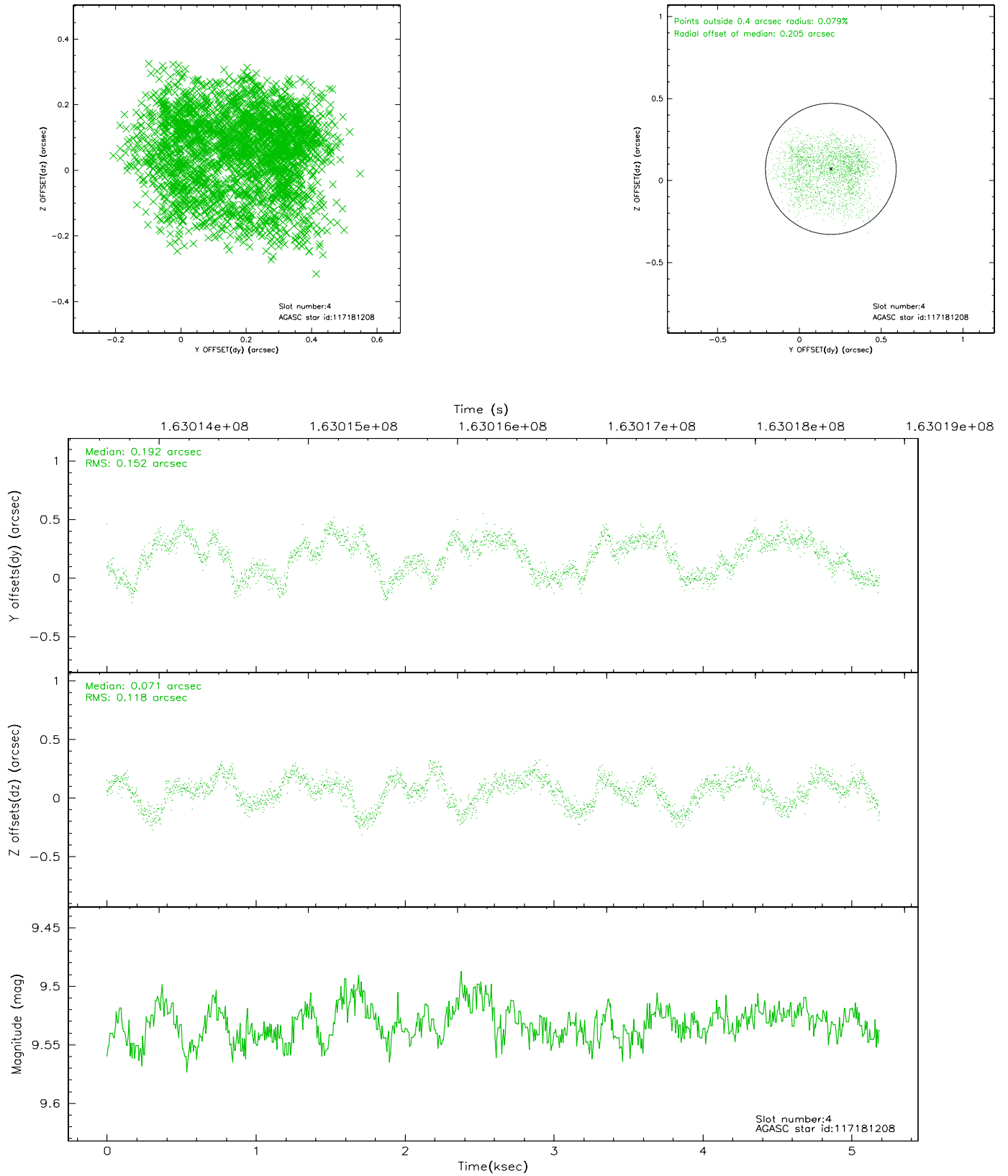
slot	status	id	mag	n_pts	med_dy	med_dz	dr1	dr2	ra	dec	mean_y	mean_z
0	FID	ACIS-S-2	7.11	1266	-0.032	0.029	0.006	0.010	0.000000	0.000000	-754.87	-1727.60
1	FID	ACIS-S-4	7.21	1266	-0.046	0.008	0.005	0.008	0.000000	0.000000	2157.83	179.71
2	FID	ACIS-S-5	7.24	1266	0.047	-0.028	0.006	0.010	0.000000	0.000000	-1806.17	174.60
3	GUIDE	117179128	9.88	2529	0.243	-0.128	0.123	0.206	201.219977	10.740563	-2275.67	463.63
4	GUIDE	117181208	9.53	2521	0.192	0.071	0.212	0.313	201.637895	10.902941	-1766.21	-1040.45
5	GUIDE	117182792	8.03	2532	-0.131	-0.162	0.085	0.131	201.169454	11.396928	92.09	522.59
6	GUIDE	117310040	8.45	2531	-0.077	0.095	0.119	0.181	201.745584	11.908554	1832.17	-1596.54
7	GUIDE	117309544	10.12	2527	-0.223	0.136	0.146	0.240	201.990867	11.707410	1067.86	-2425.86

2.4 Star Slots

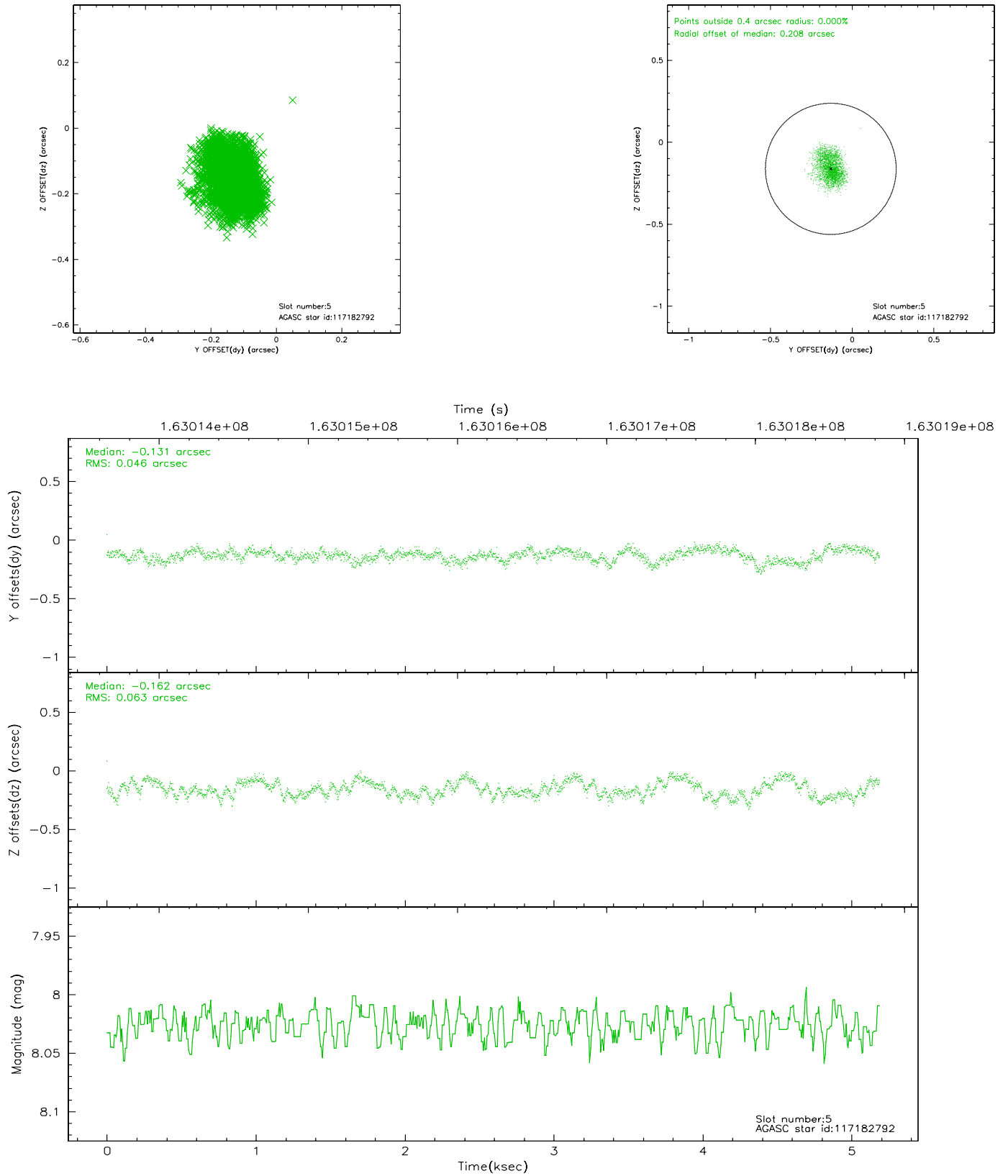
2.4.1 Slot 3



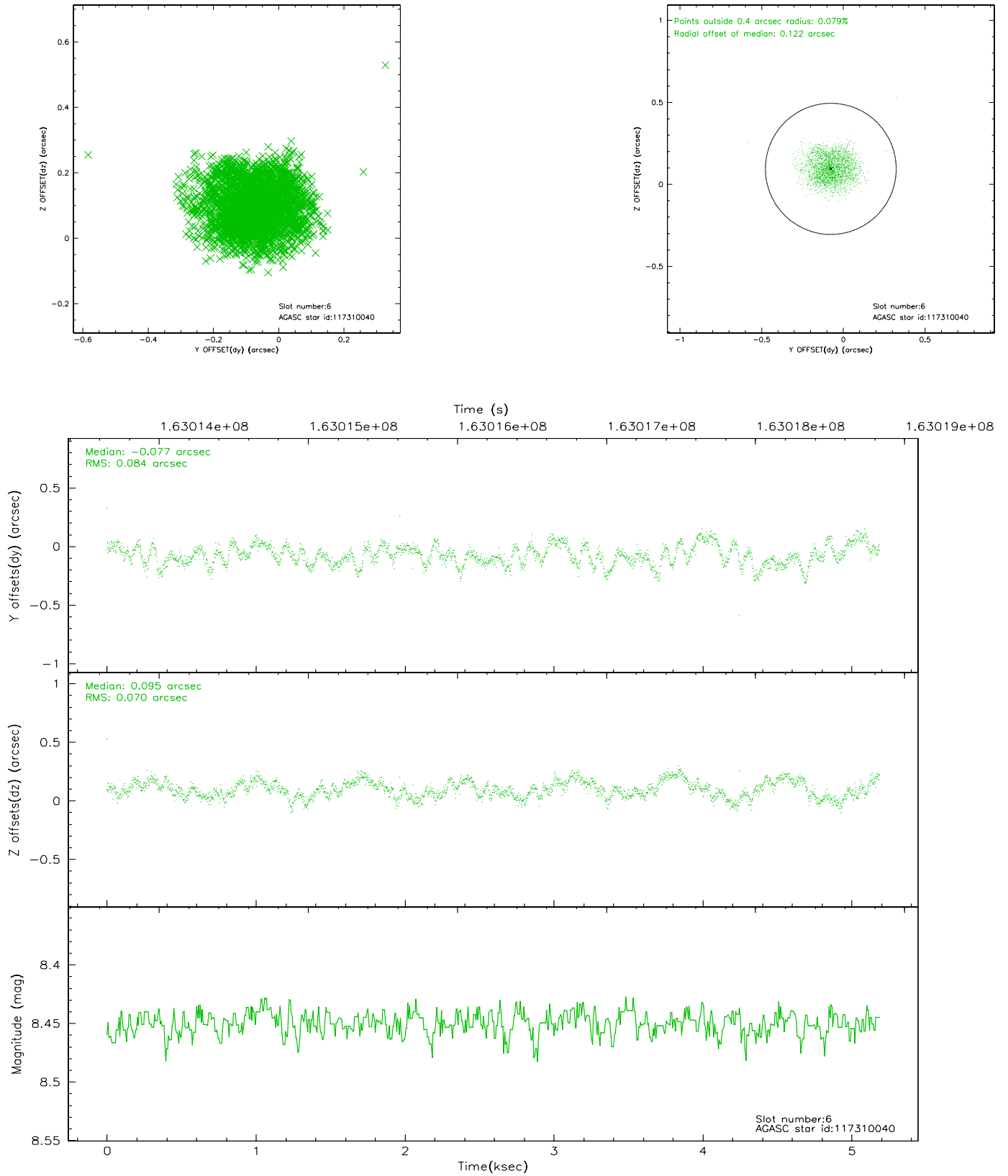
2.4.2 Slot 4



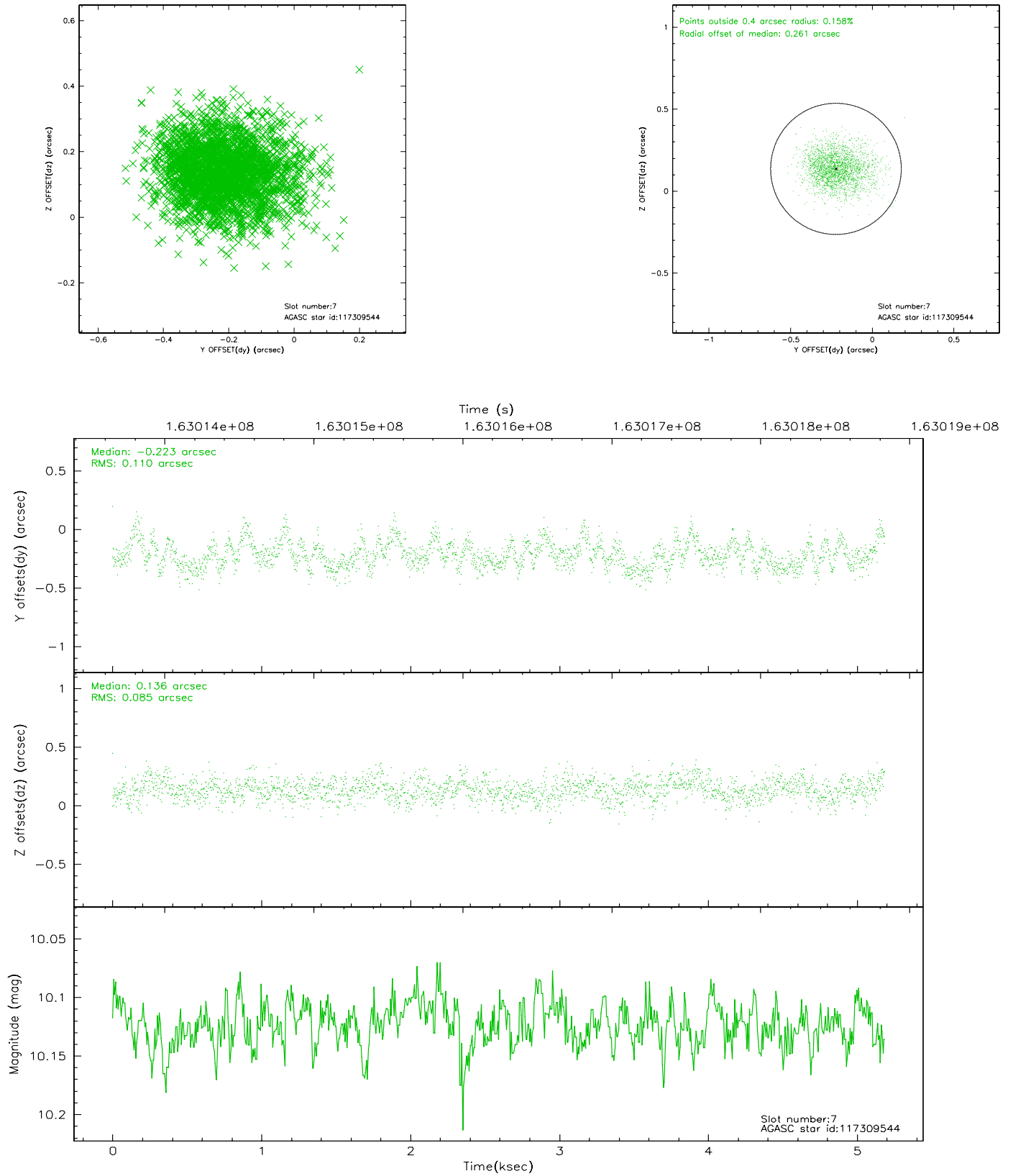
2.4.3 Slot 5



2.4.4 Slot 6

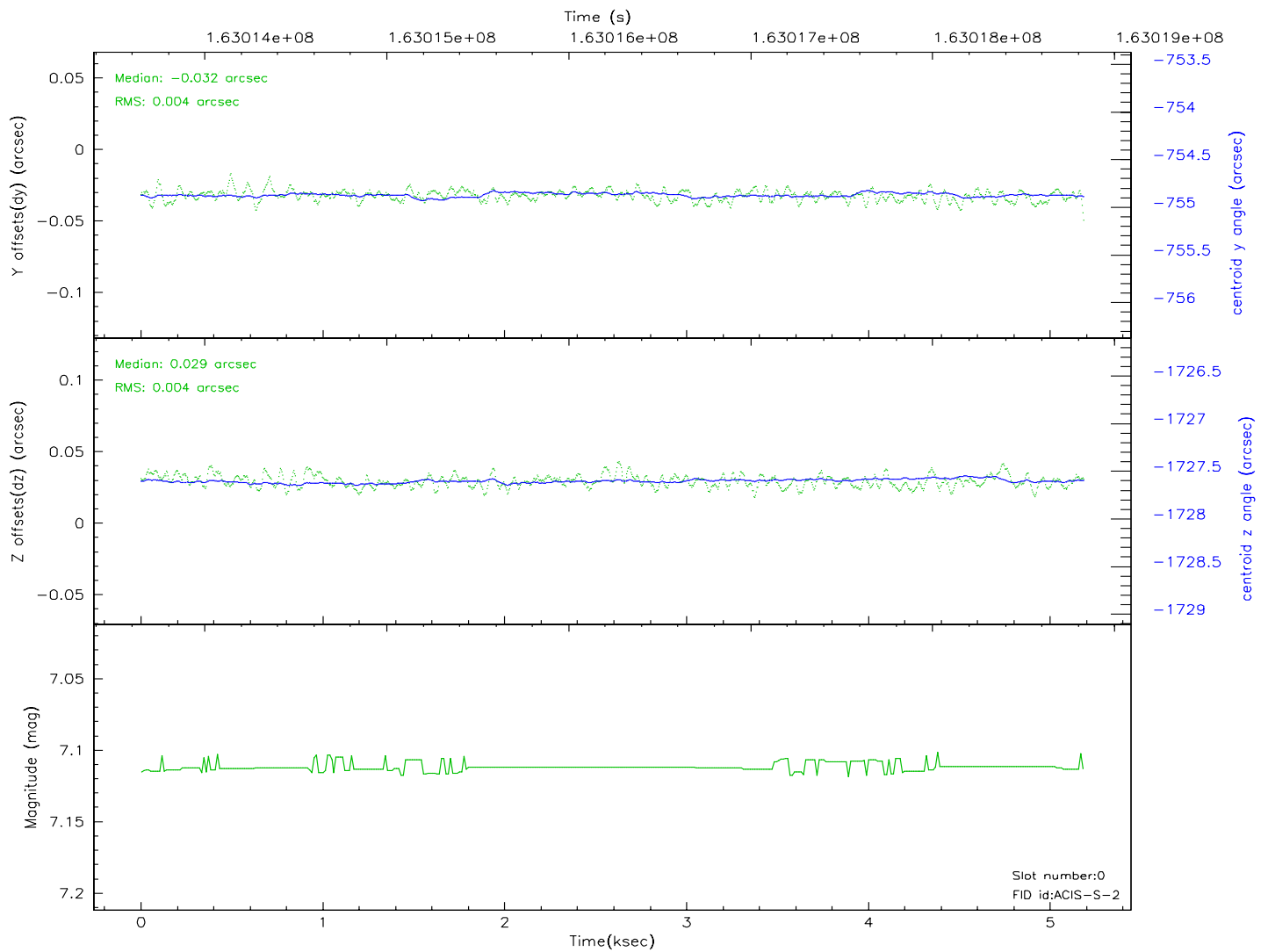
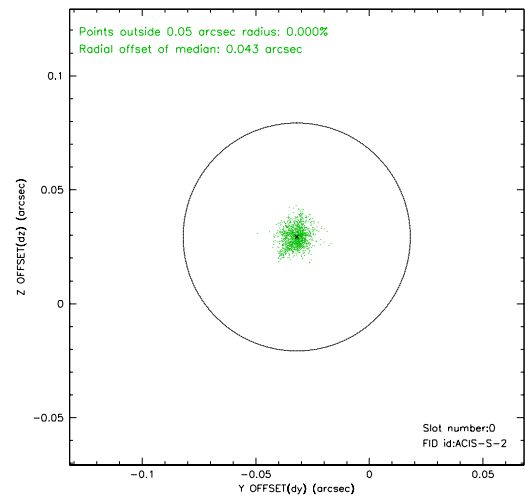
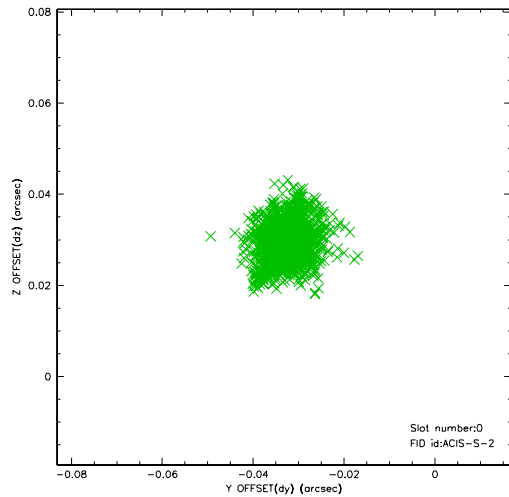


2.4.5 Slot 7

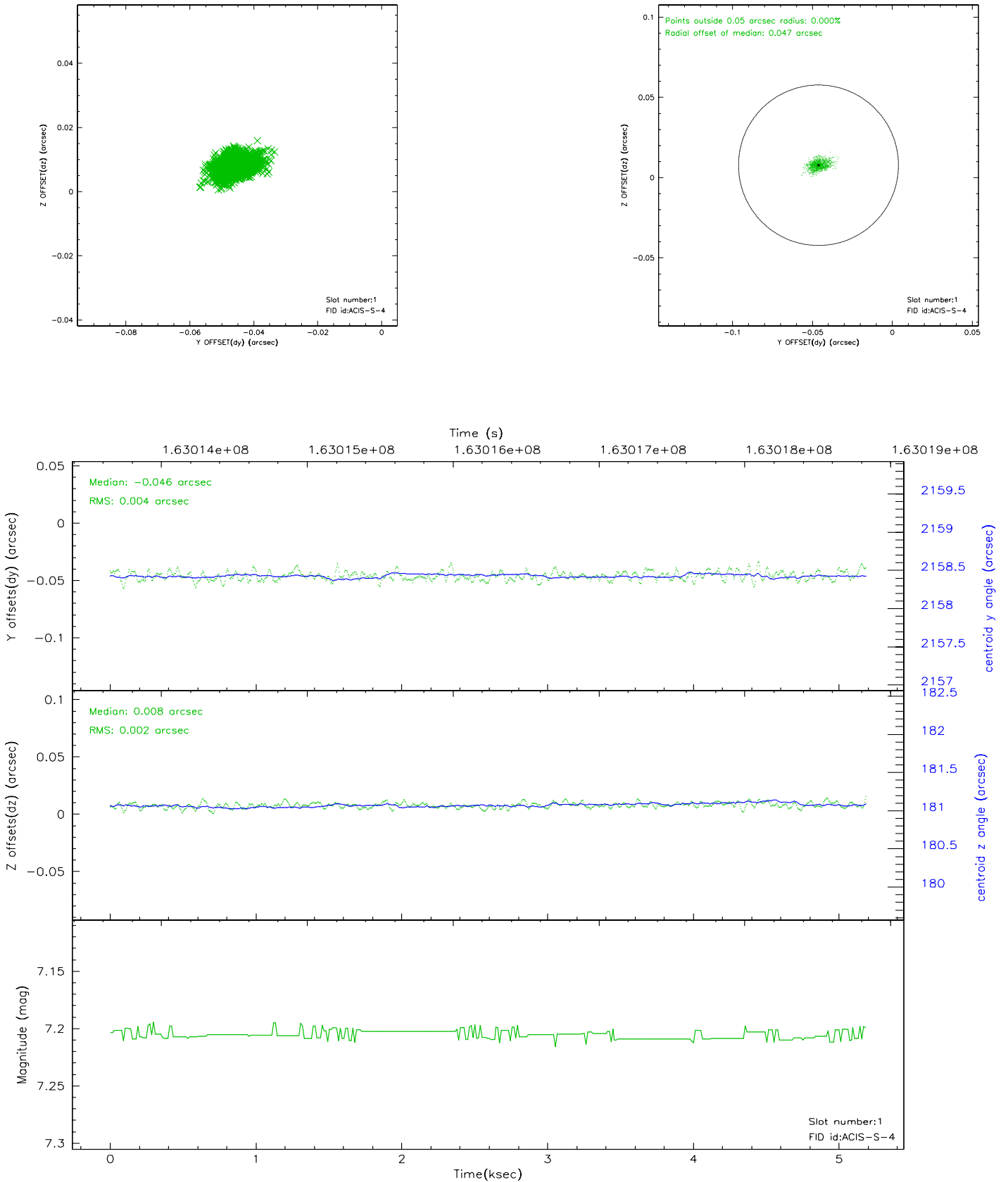


2.5 FID Slots

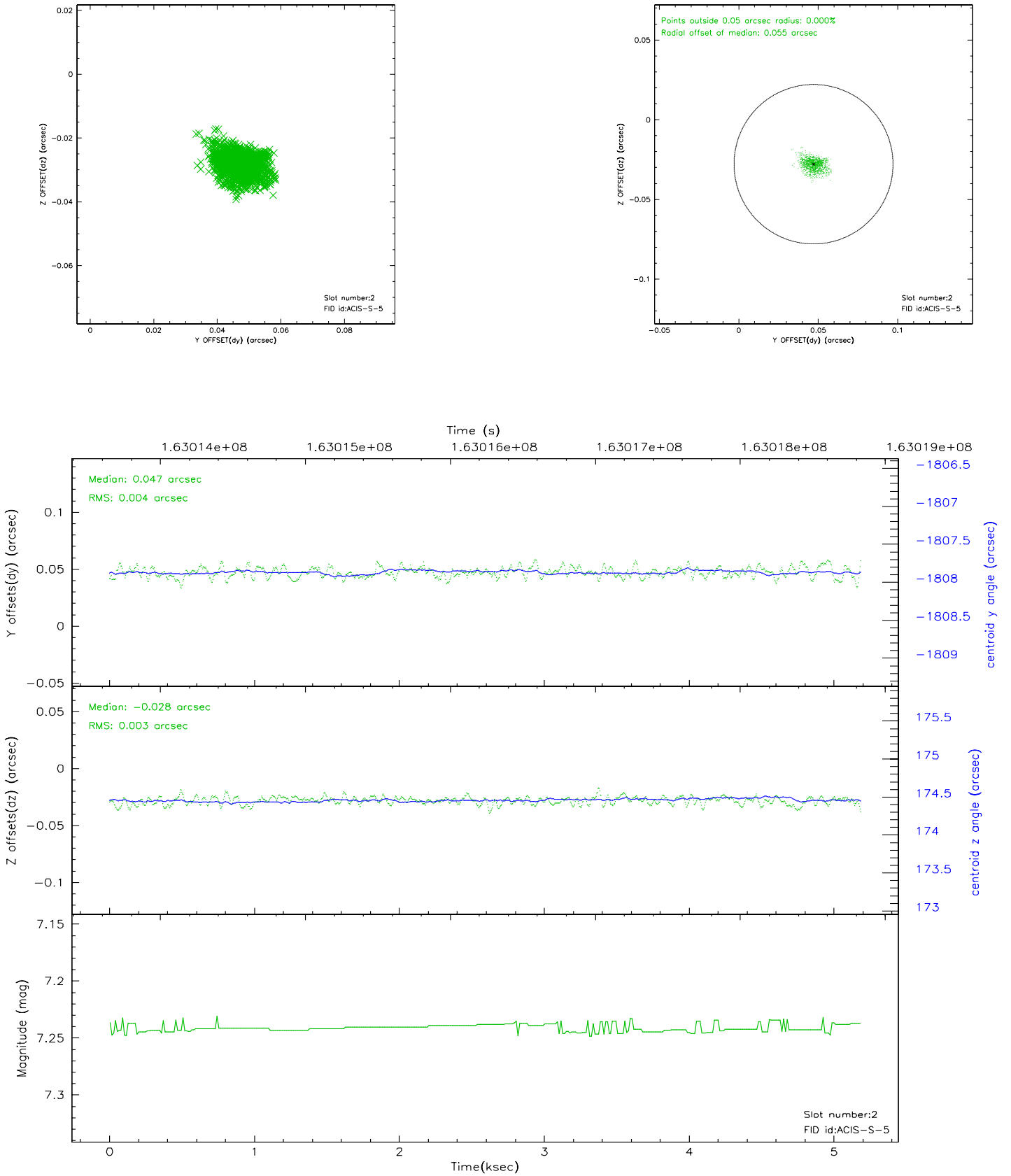
2.5.1 Slot 0



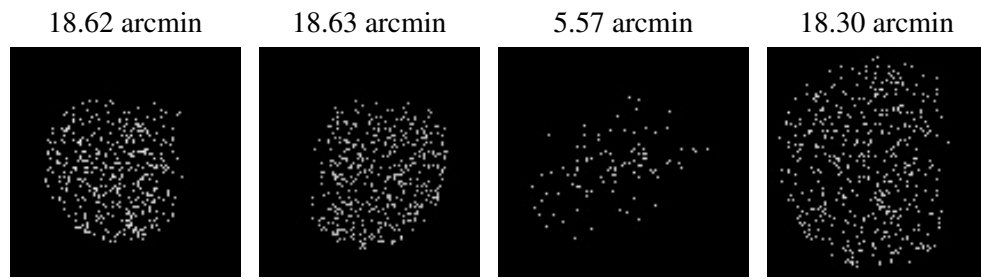
2.5.2 Slot 1



2.5.3 Slot 2



3 Point Sources



A Summary

A.1 Status

V&V Scientist	Beth Sundheim
V&V Date (YYYY-MM-DD)	2006.07.23
V&V Edition	1
V&V Disposition and Status	OK
V&V Charge Time	4.762

A.2 Comments