

V&V Reference Report

L2 ASCDS Version : 7.6.9

Observation 3560 - L2 Version 001
Chandra X-Ray Center

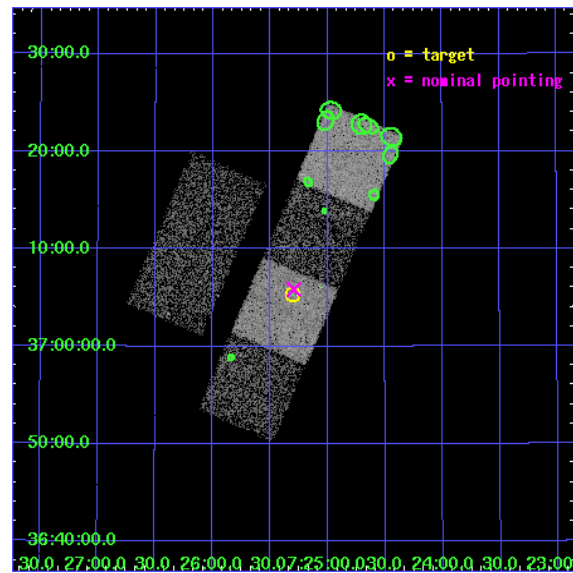
L2 Processing Date : Oct 15 2006

Contents

1	Front	2
2	OBI	3
2.1	OBI	3
2.1.1	Images	3
2.1.2	Bias	3
2.1.3	Parameters	4
2.1.4	Events	4
2.2	Compared Parameters	5
2.3	Aspect	6
2.4	Star Slots	9
2.4.1	Slot 3	9
2.4.2	Slot 4	10
2.4.3	Slot 5	11
2.4.4	Slot 6	12
2.4.5	Slot 7	13
2.5	FID Slots	14
2.5.1	Slot 0	14
2.5.2	Slot 1	15
2.5.3	Slot 2	16
3	Point Sources	17
A	Summary	18
A.1	Status	18
A.2	Comments	18

1 Front

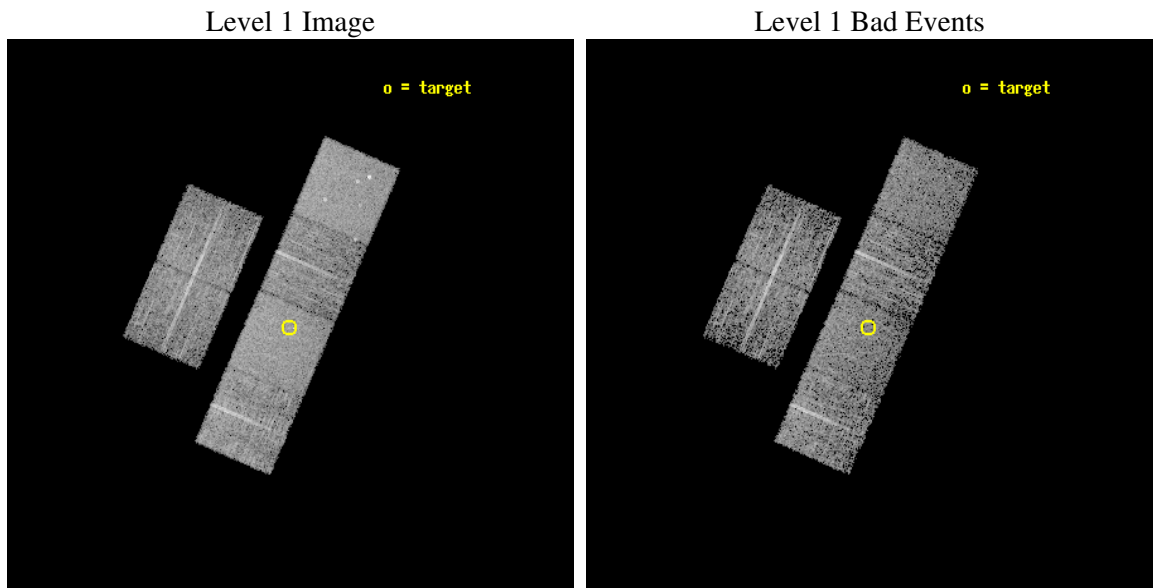
seq_num	700622
obs_id	3560
title	A CHANDRA SURVEY OF LUMINOUS, RADIO-DETECTED QUASARS AT $Z > 4$
observer	Professor Gordon Garmire
object	FIRST 0725+3705
dtcycle	0
cycle	P
ra_targ	111.32625
dec_targ	37.088306
ra_nom	111.32343662337
dec_nom	37.097669561486
roll_nom	113.31321264562
revision	2
ontime	4950.3999815583
livetime	4887.7150362188
ontime2	4947.158981353
ontime3	4950.3999815583
ontime5	4950.3999815583
ontime6	4950.3999815583
ontime7	4950.3999815583
ontime8	4950.3999815583
l2events	46226



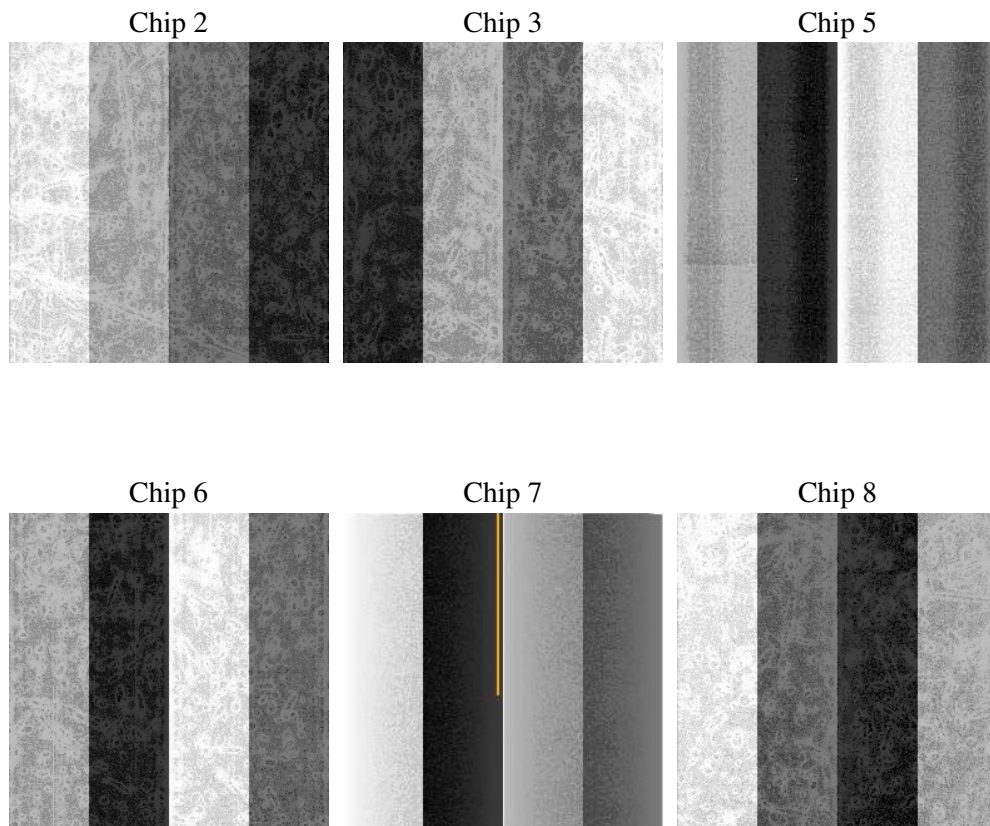
2 OBI

2.1 OBI

2.1.1 Images



2.1.2 Bias



2.1.3 Parameters

obi_num	0
ascdsver	7.6.9
caldbver	3.2.3
date	2006-10-15T03:35:38
revision	2

sched_exp_time	4838.000000
ontime	5324.9647623897
ontime2	5321.7237621844
ontime3	5328.2057724595
ontime5	5324.9647623897
ontime6	5328.2057724595
ontime7	5324.9647623897
ontime8	5328.2057724595
l1events	229952

2.1.4 Events

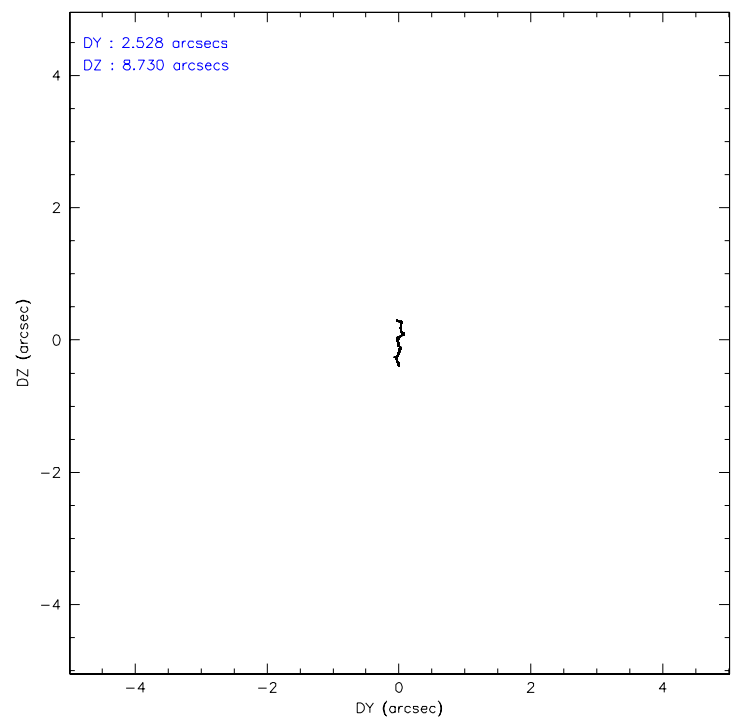
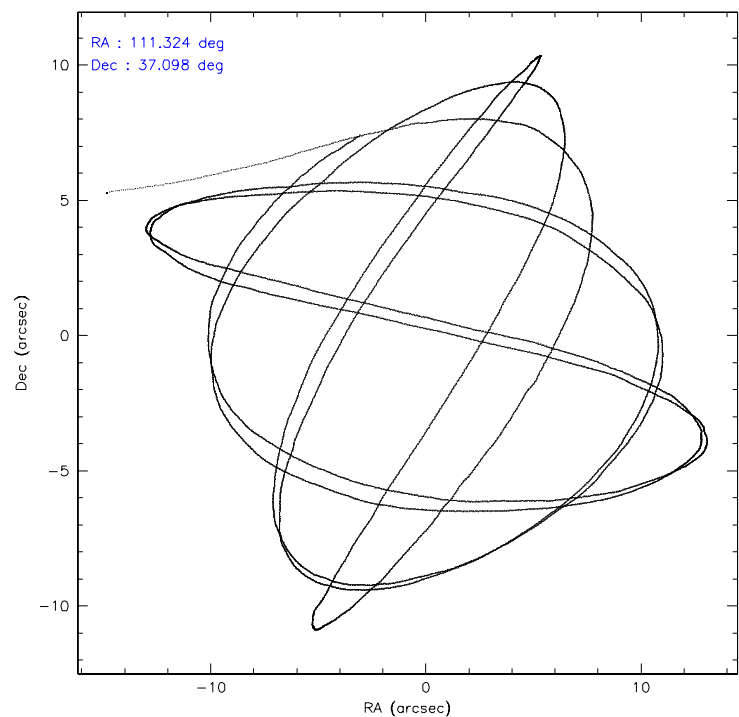
	ccd 2	ccd 3	ccd 5	ccd 6	ccd 7	ccd 8
level 1 events	33692	31586	47293	32923	43441	41017
rejected events	30312	28081	27493	29293	27722	33131
rejected %	89%	88%	58%	88%	63%	80%

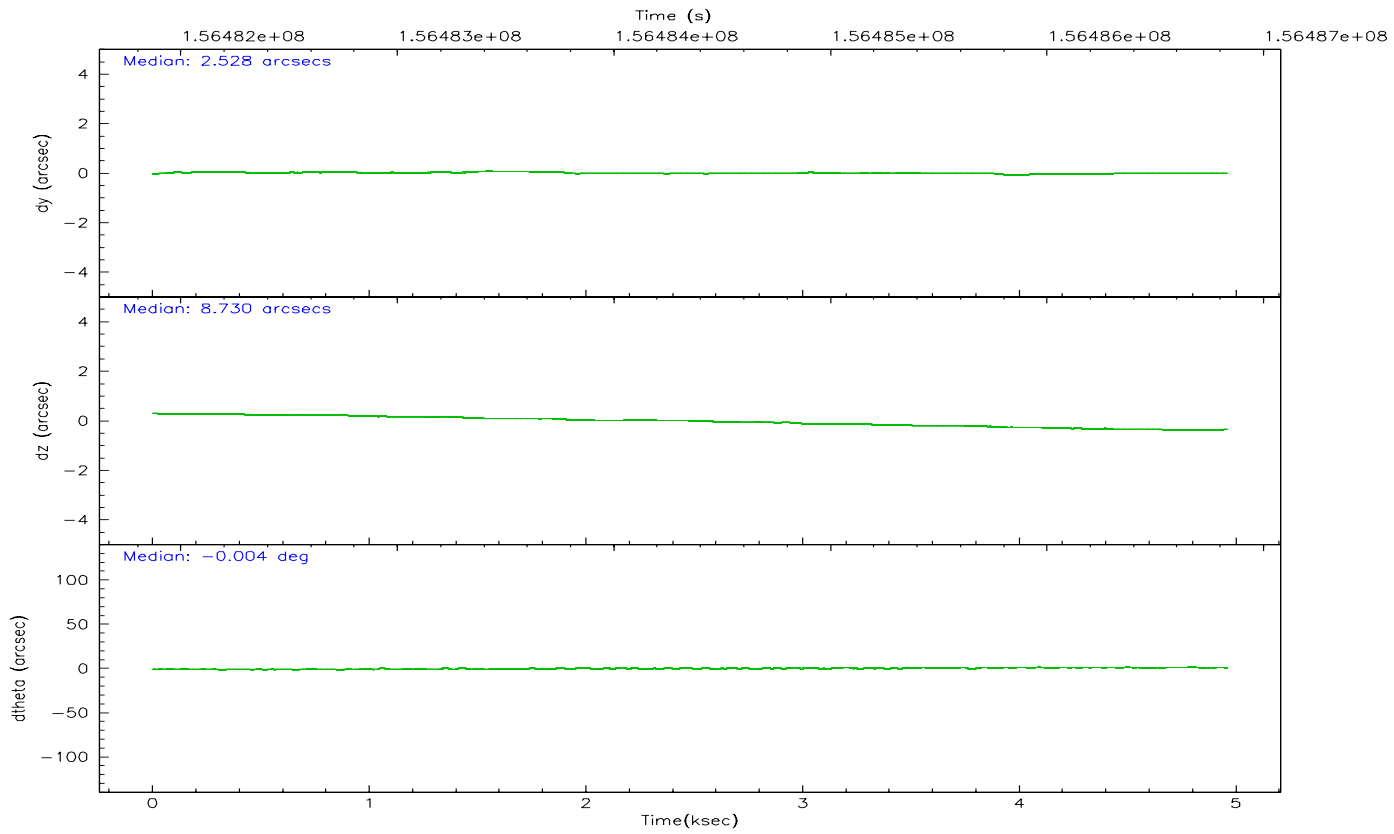
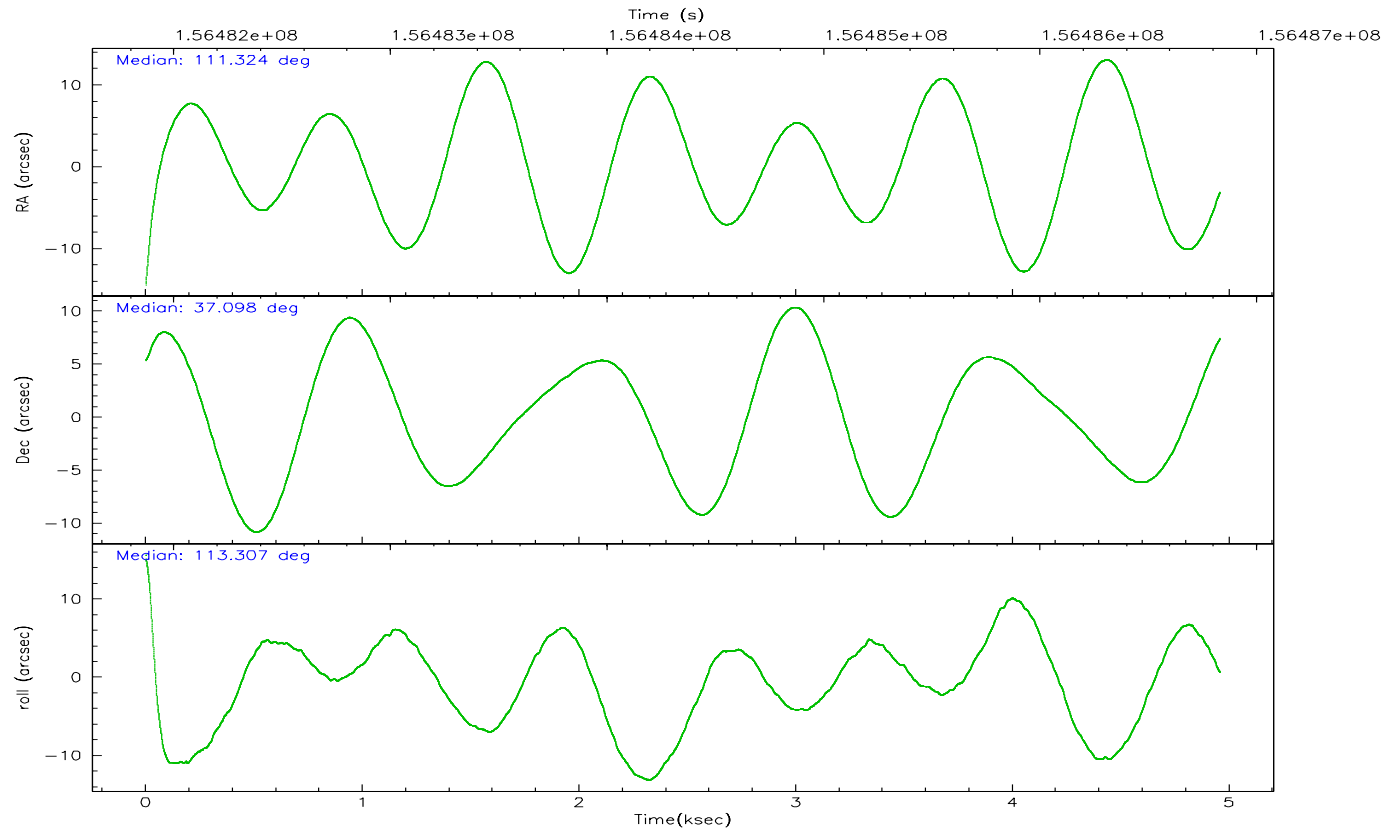
	ccd 2	ccd 3	ccd 5	ccd 6	ccd 7	ccd 8
grade 0 events	1555	1650	1947	1578	1098	2686
	4%	5%	4%	4%	2%	6%
grade 1 events	21	17	64	11	31	33
	0%	0%	0%	0%	0%	0%
grade 2 events	783	728	6591	811	4121	1770
	2%	2%	13%	2%	9%	4%
grade 3 events	320	387	486	384	867	1034
	0%	1%	1%	1%	1%	2%
grade 4 events	334	388	498	330	855	879
	0%	1%	1%	1%	1%	2%
grade 5 events	1208	1365	2257	1456	2967	1853
	3%	4%	4%	4%	6%	4%
grade 6 events	644	631	11851	790	9947	2157
	1%	1%	25%	2%	22%	5%
grade 7 events	28827	26420	23599	27563	23555	30605
	85%	83%	49%	83%	54%	74%

2.2 Compared Parameters

Parameter	Planned	Actual	Parameter	Planned	Actual
Instrument	ACIS	ACIS	Obspar format version number	6	6
Detector	ACIS-235678	ACIS-235678	Obspar file type	PREDICTED	ACTUAL
Grating	NONE	NONE	Obspar update status	NONE	UPDATED
Data mode	FAINT	FAINT	Number of optional ACIS chips dropped	0	0
Observation mode	POINTING	POINTING	On-chip summing requested	N	N
Pointing RA	111.351118	111.3234366233665	Subarray requested	NONE	NONE
Pointing Dec	37.081742	37.09766956148604	Alternating exposures requested	N	N
Pointing Roll	113.139835	113.3132126456183	Primary exposure time	0.000000	3.2
SIM focus pos (mm)	-0.684267	-0.6828225247311905			
SIM defocus (mm)	0	0.001444936568705701			
SIM translation stage pos (mm)	-190.132523	-190.1425803651734			
SIM translation stage offset (mm)	0	0.01005778216563158			
Observation start time	156481995.184000	156480773.33858			
Observation start date	2002-12-17T03:12:11	2002-12-17T02:52:53			
Observation end time	156486833.184000	156487189.83885			
Observation end date	2002-12-17T04:32:49	2002-12-17T04:39:49			
Read mode	TIMED	TIMED			

2.3 Aspect



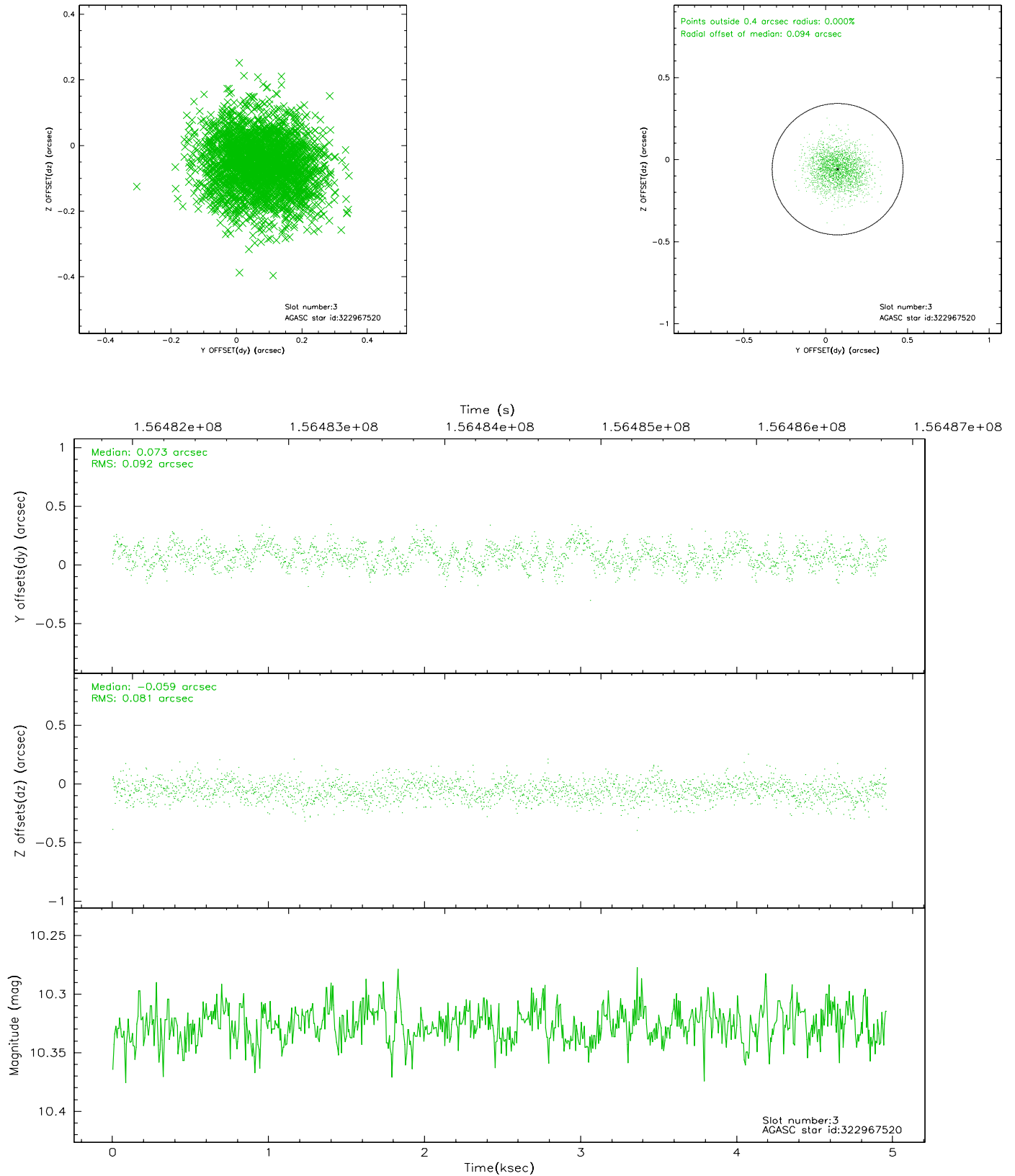


Slot Statistics

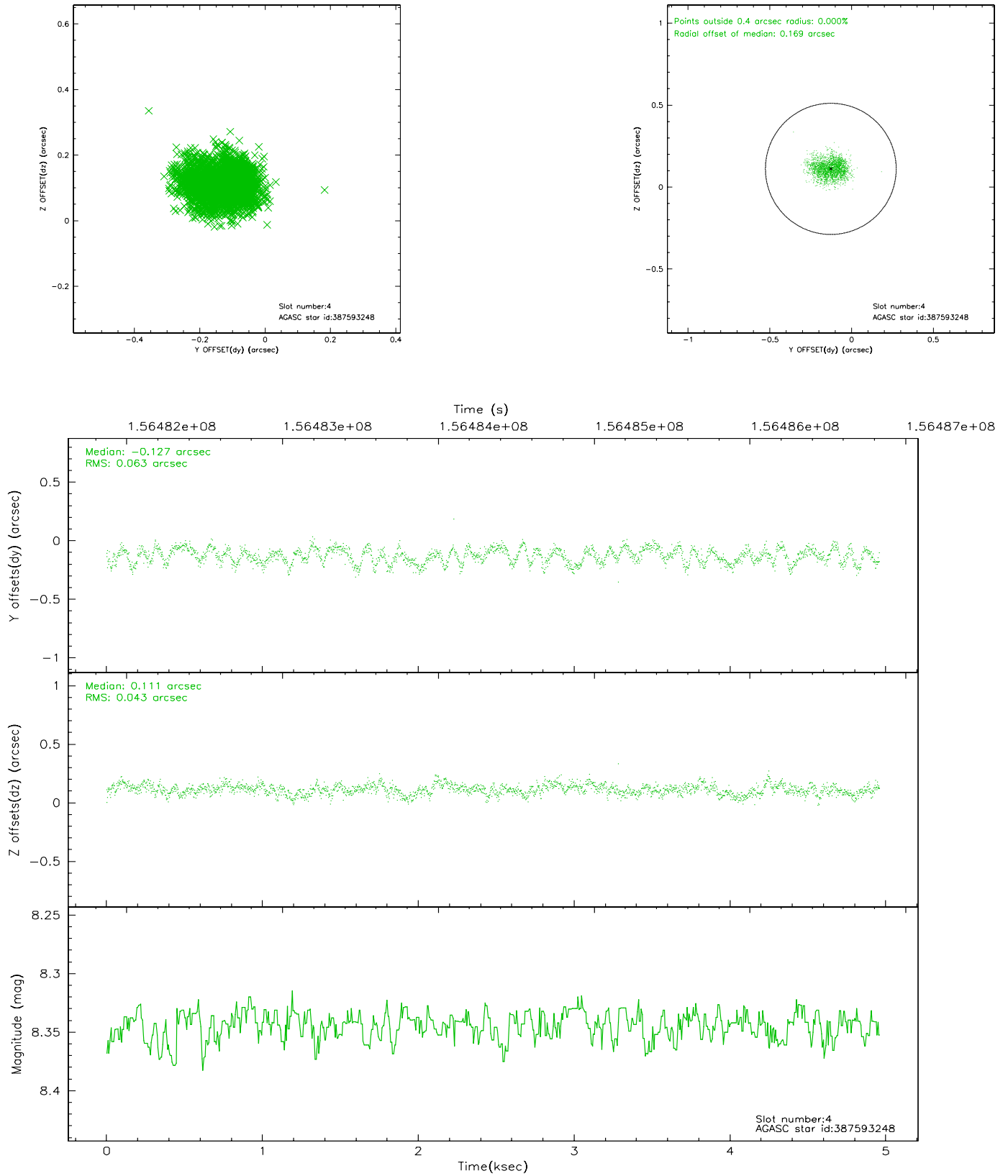
slot	status	id	mag	n_pts	med_dy	med_dz	dr1	dr2	ra	dec	mean_y	mean_z
0	FID	ACIS-S-2	7.10	1210	-0.006	0.021	0.006	0.011	0.000000	0.000000	-755.17	-1729.84
1	FID	ACIS-S-4	7.20	1210	-0.060	-0.003	0.006	0.012	0.000000	0.000000	2157.50	177.35
2	FID	ACIS-S-5	7.24	1208	0.035	-0.010	0.006	0.010	0.000000	0.000000	-1806.39	172.42
3	GUIDE	322967520	10.33	2420	0.073	-0.059	0.133	0.208	110.931120	36.761602	-582.34	1566.62
4	GUIDE	387593248	8.34	2416	-0.127	0.111	0.082	0.128	111.537836	37.823096	2244.91	-1535.29
5	GUIDE	387594544	9.06	2419	-0.080	0.111	0.082	0.131	111.840745	37.608449	1198.35	-2029.95
6	GUIDE	322962352	9.97	2416	-0.021	-0.228	0.119	0.195	110.633015	36.885116	168.16	2176.45
7	GUIDE	322979672	9.20	2418	0.153	0.069	0.086	0.134	111.978493	36.740031	-1837.52	-1181.46

2.4 Star Slots

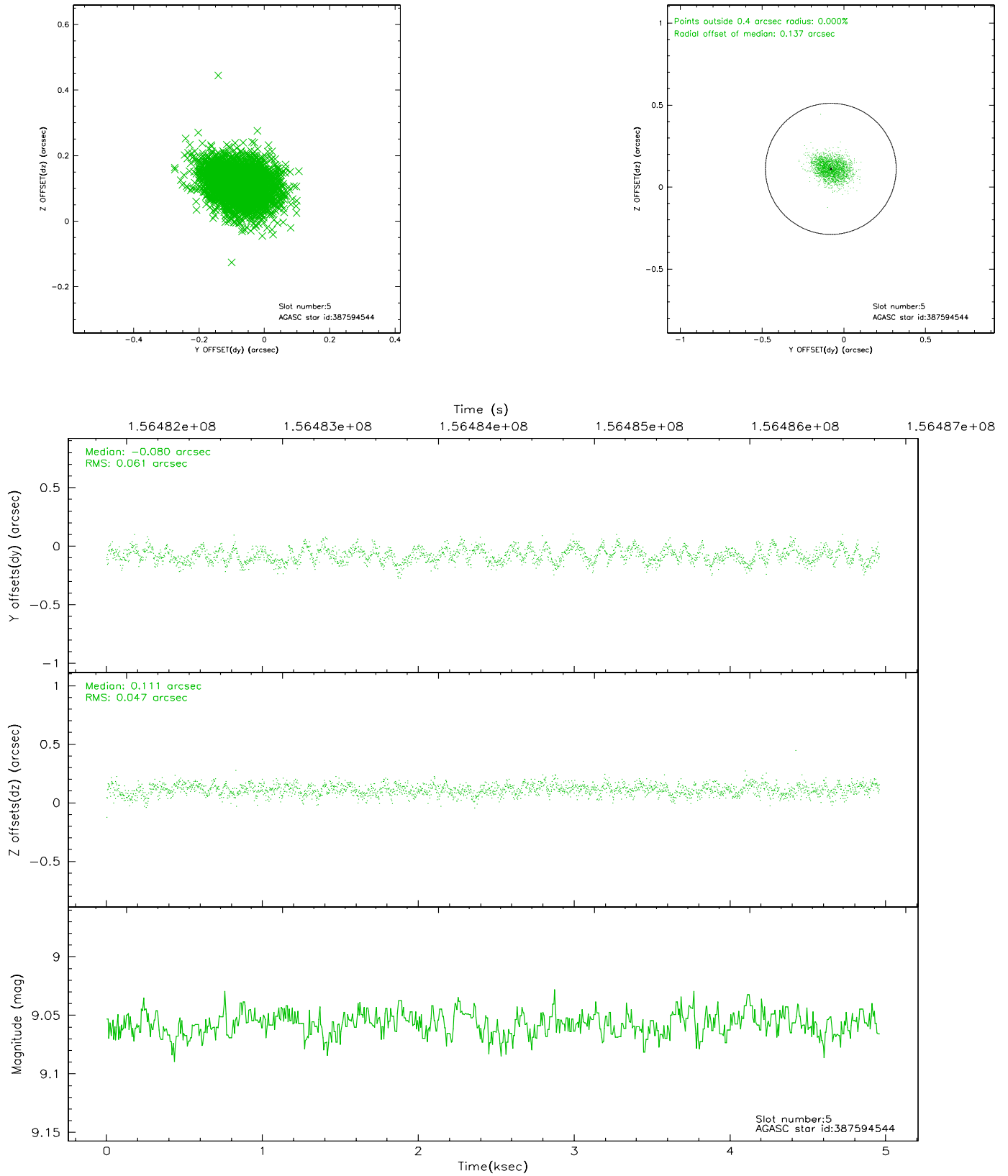
2.4.1 Slot 3



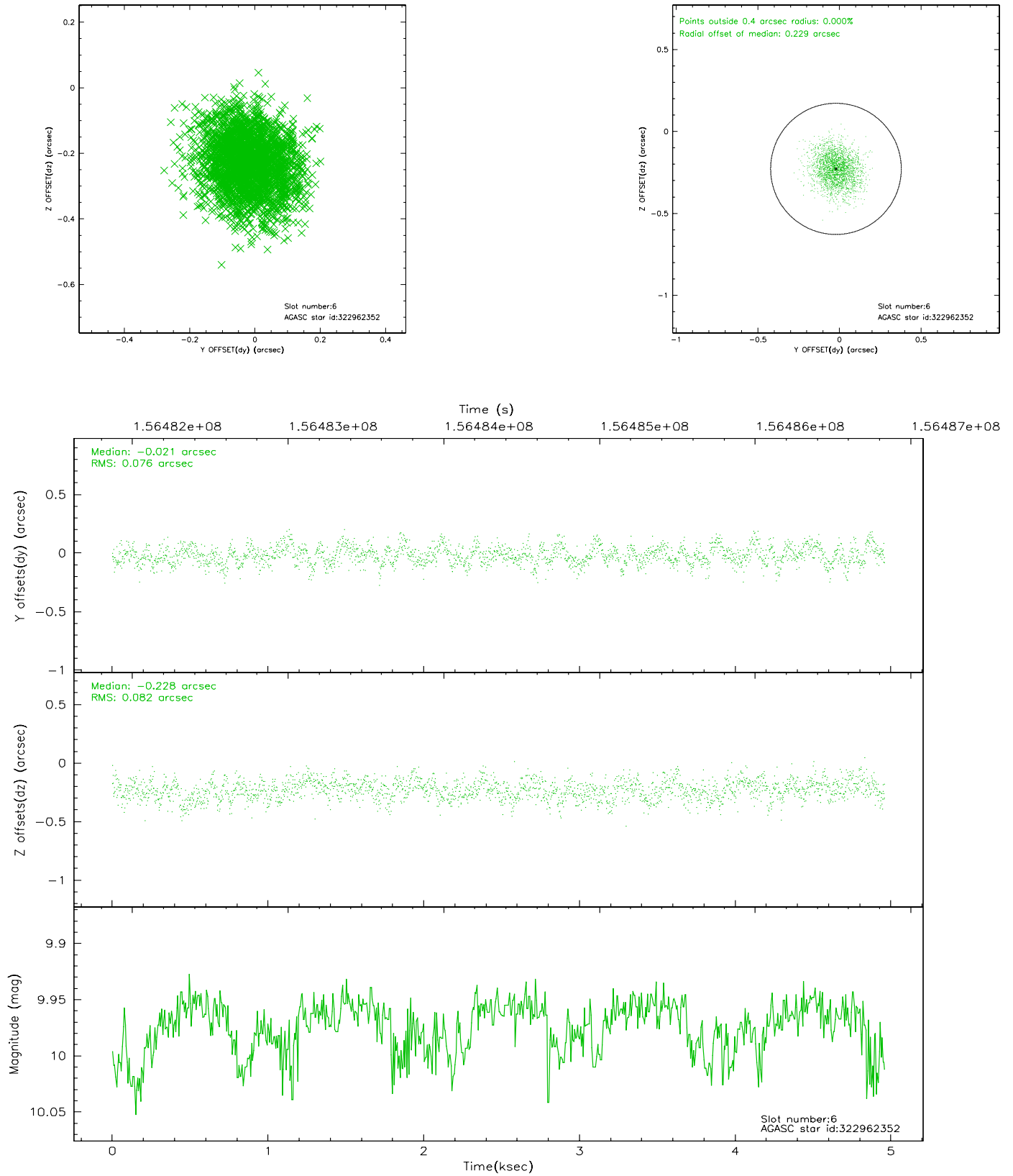
2.4.2 Slot 4



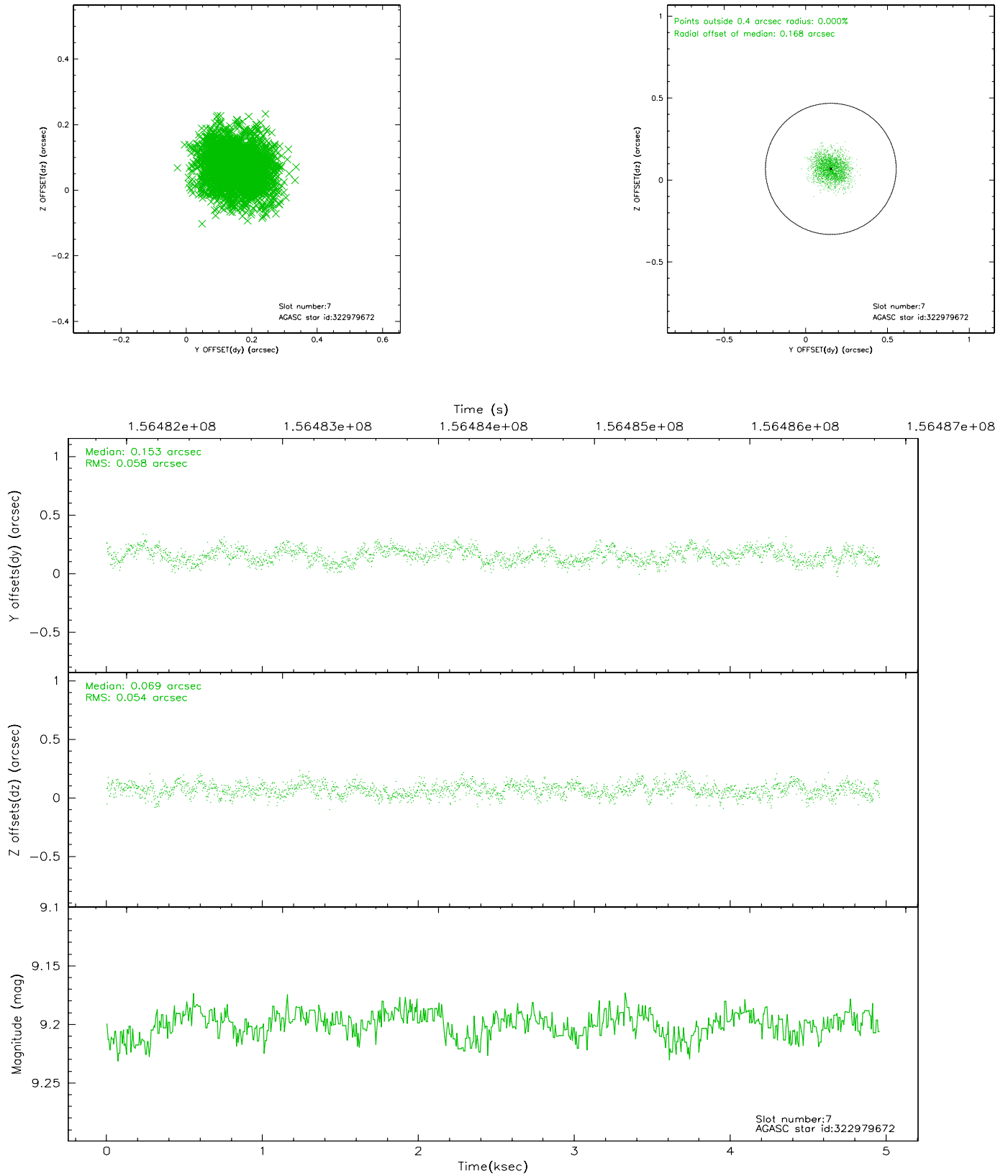
2.4.3 Slot 5



2.4.4 Slot 6

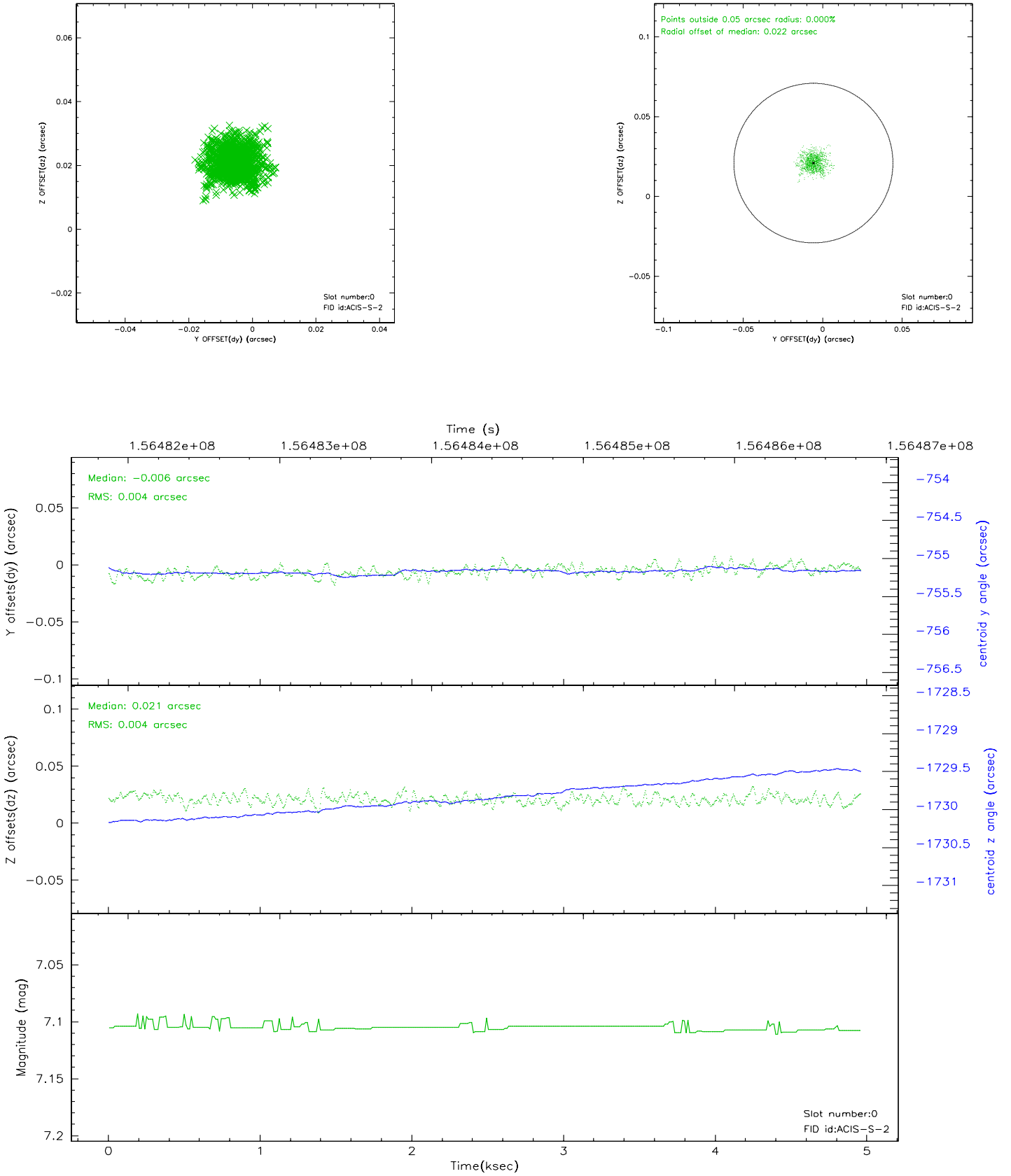


2.4.5 Slot 7

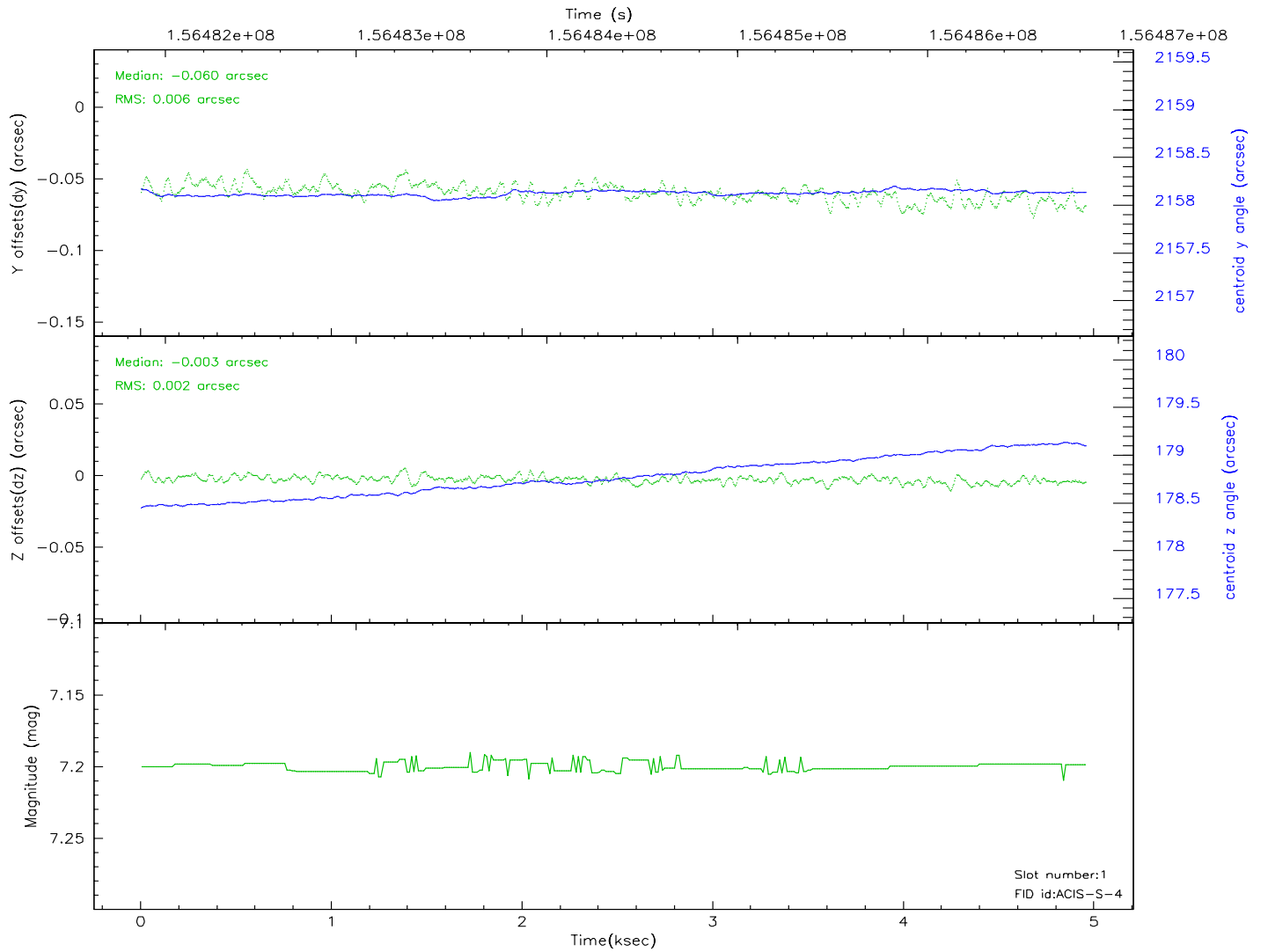
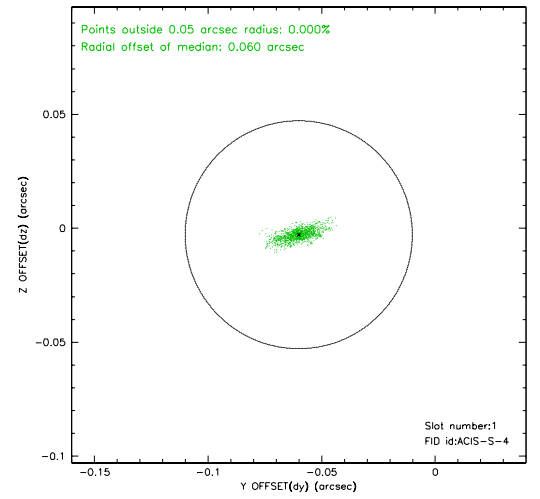
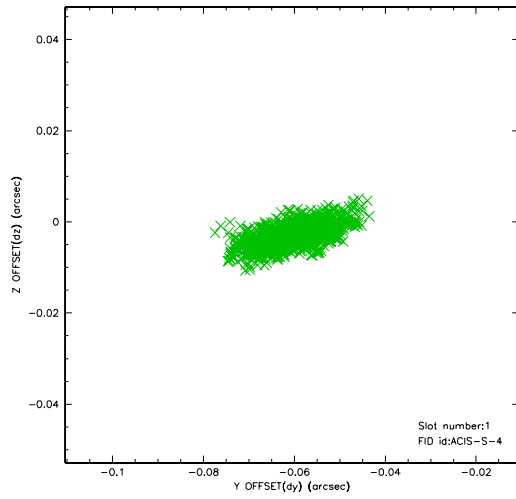


2.5 FID Slots

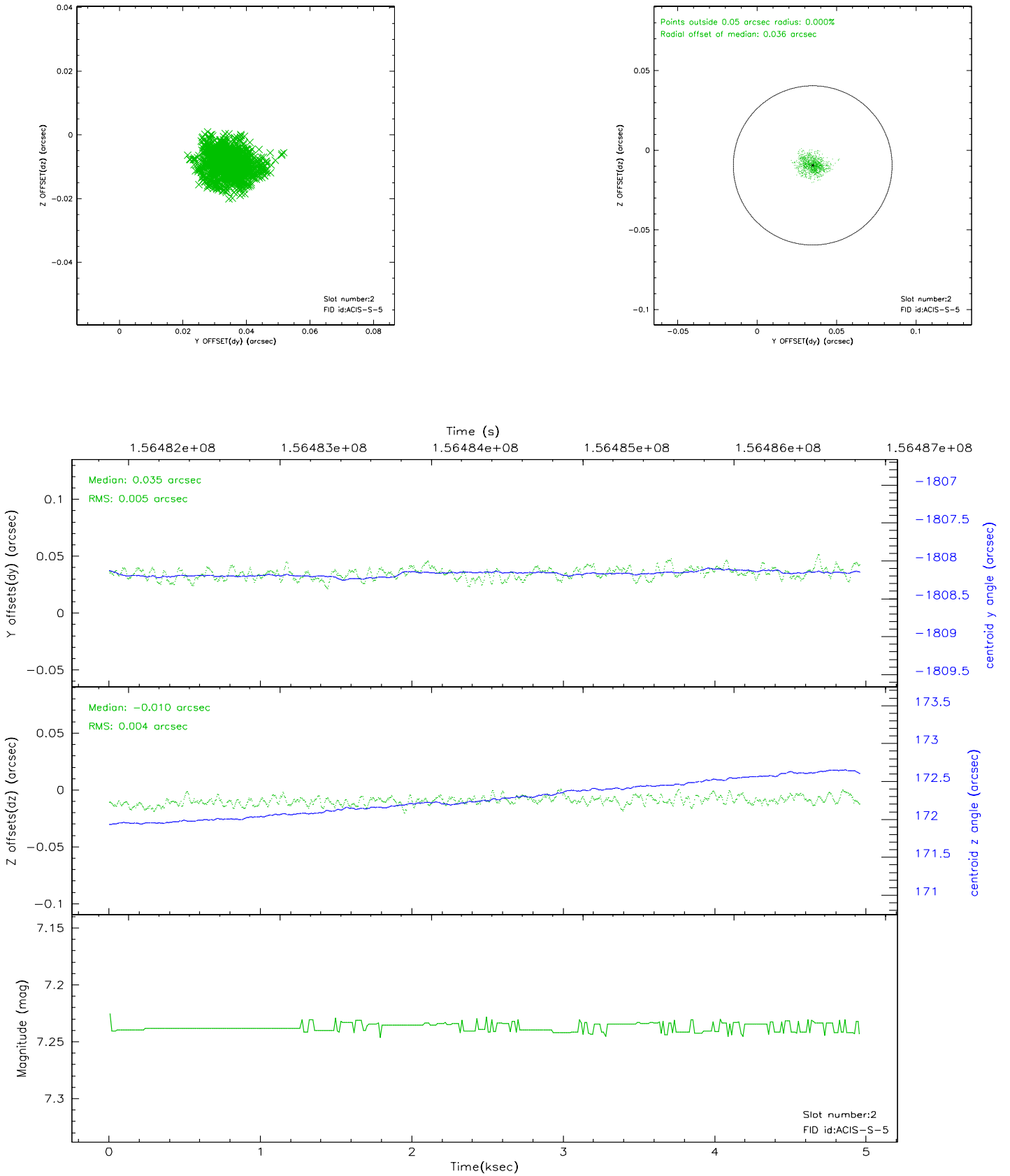
2.5.1 Slot 0



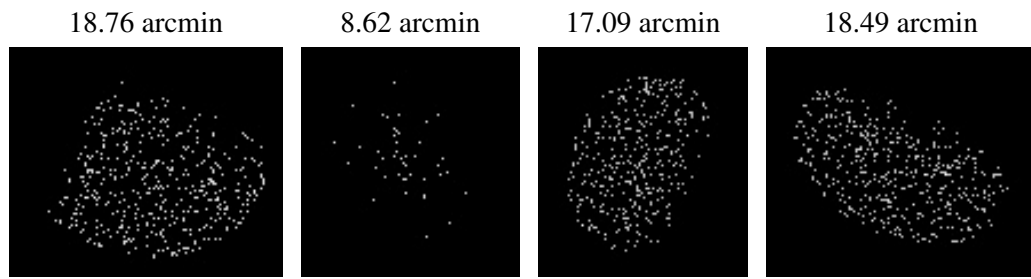
2.5.2 Slot 1



2.5.3 Slot 2



3 Point Sources



A Summary

A.1 Status

V&V Scientist	Jen Lauer
V&V Date (YYYY-MM-DD)	2006.10.16
V&V Edition	1
V&V Disposition and Status	OK
V&V Charge Time	4.95

A.2 Comments