

# V&V Reference Report

## L2 ASCDS Version : 7.6.8

Observation 3555 - L2 Version 001  
Chandra X-Ray Center

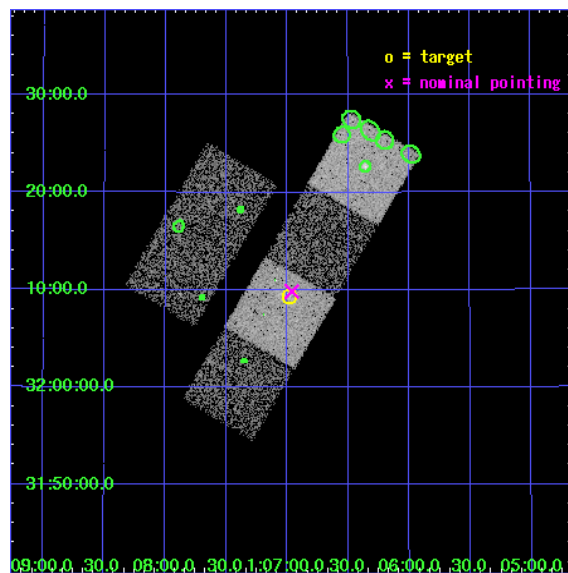
L2 Processing Date : Jul 12 2006

## Contents

<b>1</b>	<b>Front</b>	<b>2</b>
<b>2</b>	<b>OBI</b>	<b>3</b>
2.1	OBI . . . . .	3
2.1.1	Images . . . . .	3
2.1.2	Bias . . . . .	3
2.1.3	Parameters . . . . .	4
2.1.4	Events . . . . .	4
2.2	Compared Parameters . . . . .	5
2.3	Aspect . . . . .	6
2.4	Star Slots . . . . .	9
2.4.1	Slot 3 . . . . .	9
2.4.2	Slot 4 . . . . .	10
2.4.3	Slot 5 . . . . .	11
2.4.4	Slot 6 . . . . .	12
2.4.5	Slot 7 . . . . .	13
2.5	FID Slots . . . . .	14
2.5.1	Slot 0 . . . . .	14
2.5.2	Slot 1 . . . . .	15
2.5.3	Slot 2 . . . . .	16
<b>3</b>	<b>Point Sources</b>	<b>17</b>
<b>A</b>	<b>Summary</b>	<b>18</b>
A.1	Status . . . . .	18
A.2	Comments . . . . .	18

# 1 Front

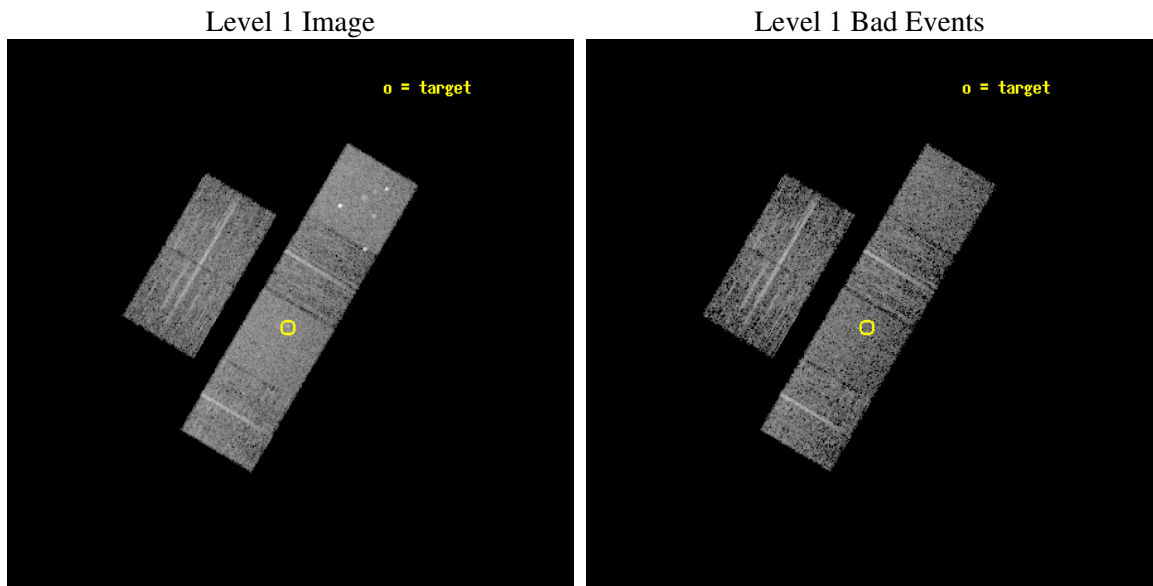
seq_num	700617
obs_id	3555
title	THE NATURE OF THE X-RAY SOURCE 1E0104+3153
observer	Dr. Peter Predehl
object	1E0104+3153
dtcycle	0
cycle	P
ra_targ	16.744583
dec_targ	32.155
ra_nom	16.740521641864
dec_nom	32.164103390614
roll_nom	120.5489017361
revision	2
ontime	5145.5180402994
livetime	5080.3623926141
ontime2	5126.0721687675
ontime3	5142.2770999074
ontime5	5142.2770999074
ontime6	5129.3132786155
ontime7	5145.5180402994
ontime8	5126.0722286403
l2events	51274



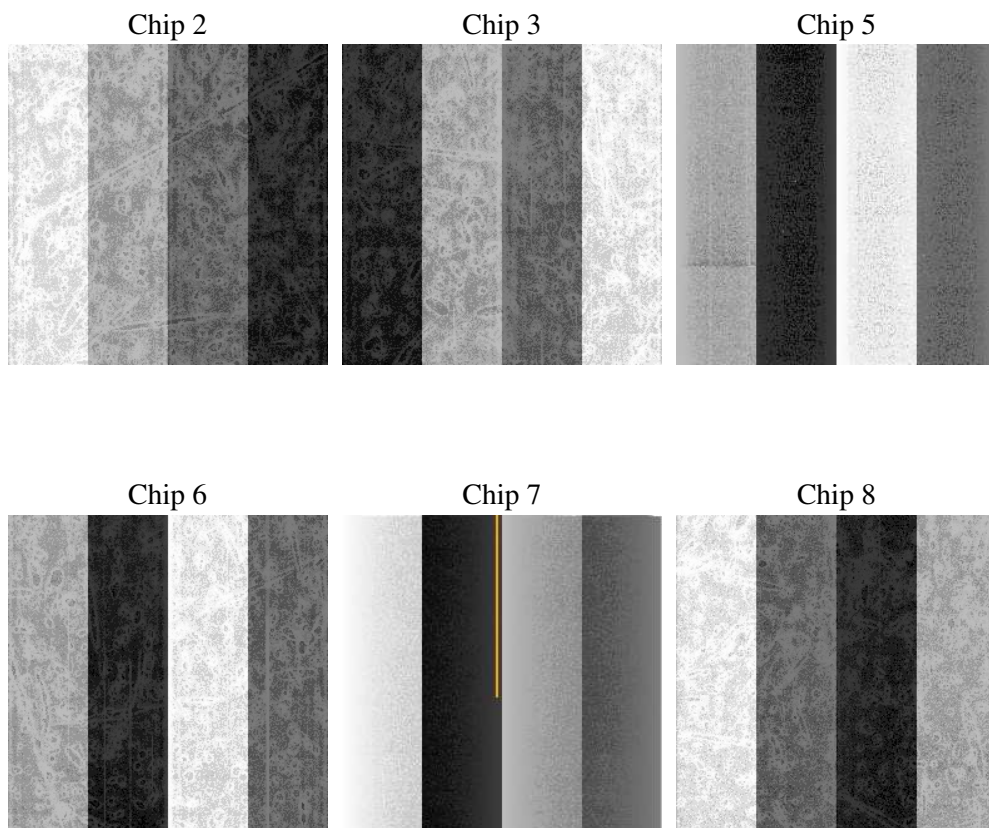
## 2 OBI

### 2.1 OBI

#### 2.1.1 Images



#### 2.1.2 Bias



### 2.1.3 Parameters

obi_num	0
ascdsver	7.6.8
caldbver	3.2.2
date	2006-07-12T23:24:22
revision	2

sched_exp_time	5000.000000
ontime	5720.3704241812
ontime2	5694.4425623119
ontime3	5717.1294837892
ontime5	5717.1294837892
ontime6	5704.1656624973
ontime7	5720.3704241812
ontime8	5700.9246125221
l1events	254577

### 2.1.4 Events

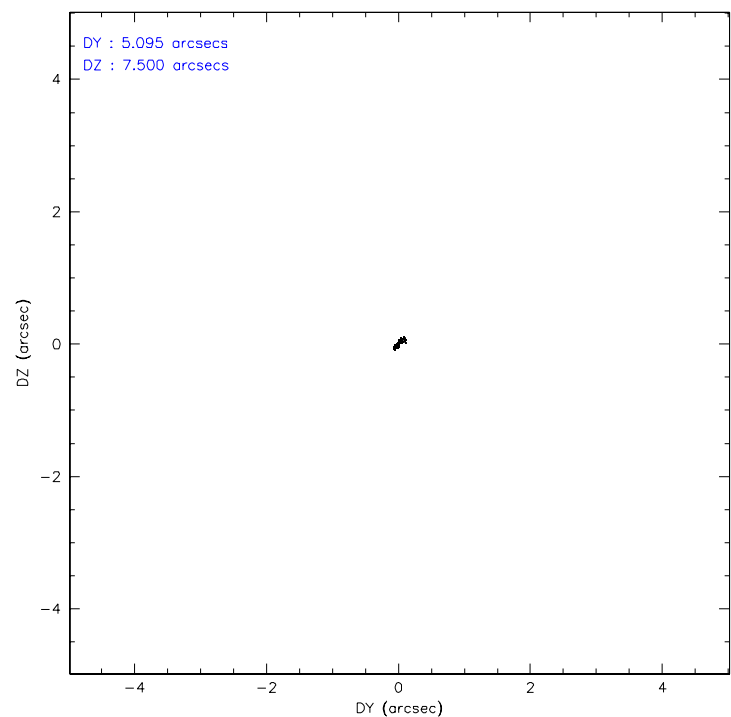
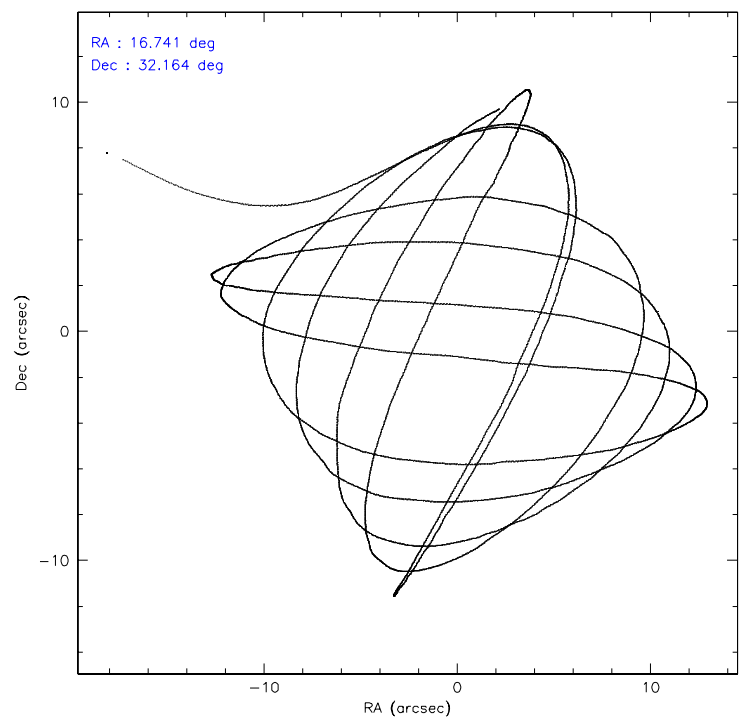
	ccd 2	ccd 3	ccd 5	ccd 6	ccd 7	ccd 8
level 1 events	36513	35055	54283	36467	48044	44215
rejected events	32088	31150	31636	32282	30759	35599
rejected %	87%	88%	58%	88%	64%	80%

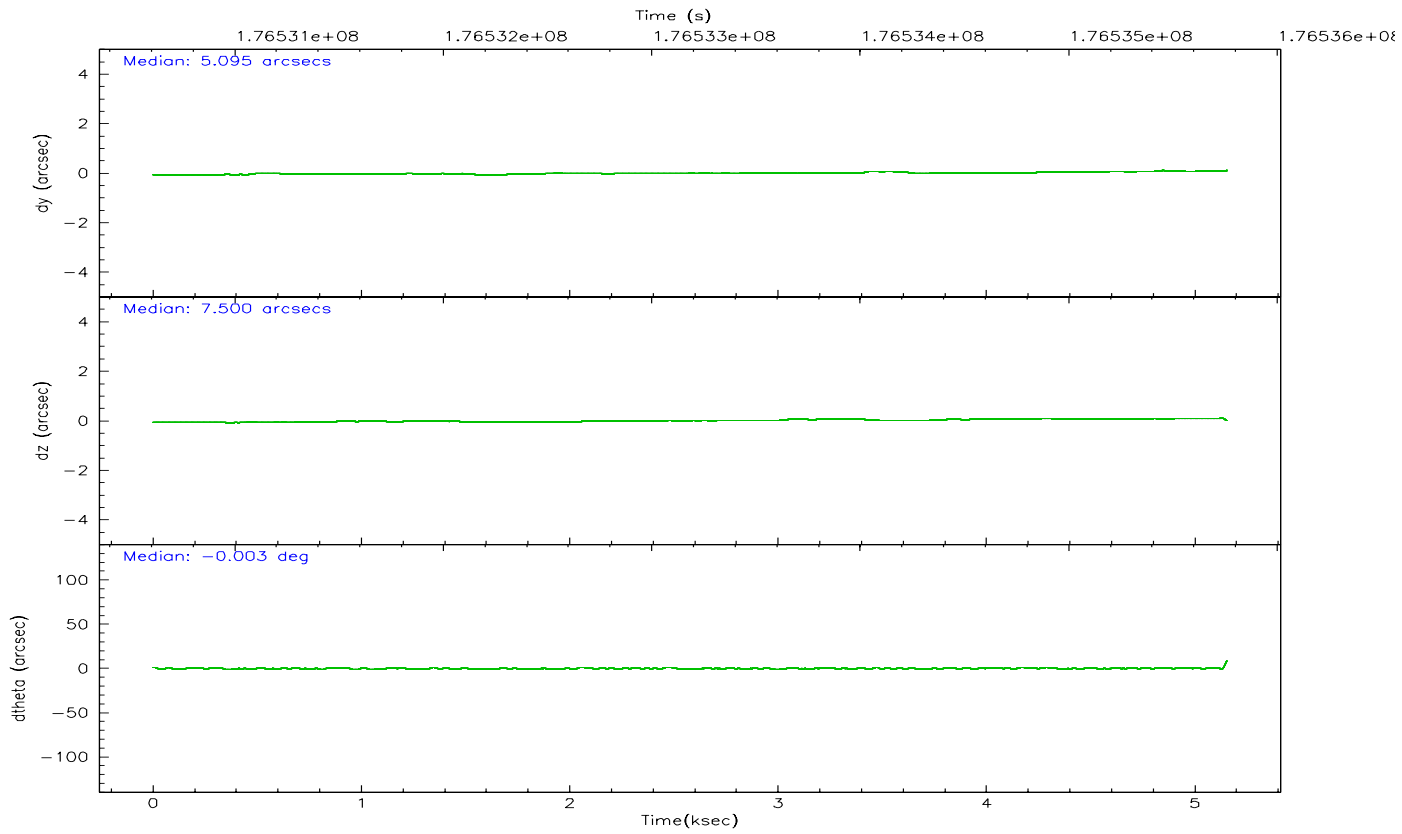
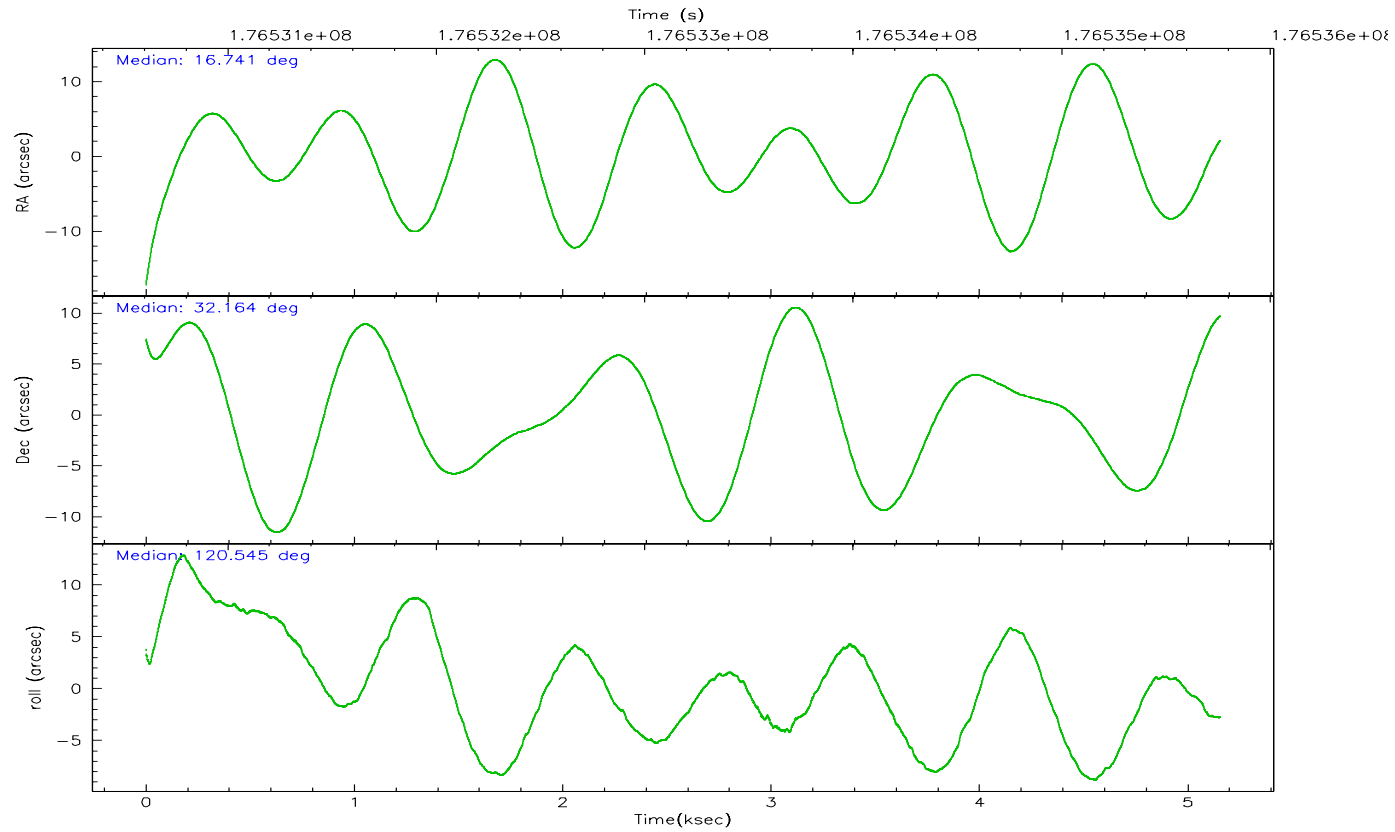
	ccd 2	ccd 3	ccd 5	ccd 6	ccd 7	ccd 8
grade 0 events	2517	2028	3524	1972	1375	2938
	6%	5%	6%	5%	2%	6%
grade 1 events	19	21	106	14	23	24
	0%	0%	0%	0%	0%	0%
grade 2 events	894	797	7427	911	4824	2239
	2%	2%	13%	2%	10%	5%
grade 3 events	395	422	561	435	1101	913
	1%	1%	1%	1%	2%	2%
grade 4 events	407	357	629	416	1019	923
	1%	1%	1%	1%	2%	2%
grade 5 events	1491	1561	2467	1610	3181	2110
	4%	4%	4%	4%	6%	4%
grade 6 events	680	735	13053	901	10874	2514
	1%	2%	24%	2%	22%	5%
grade 7 events	30110	29134	26516	30208	25647	32554
	82%	83%	48%	82%	53%	73%

## 2.2 Compared Parameters

Parameter	Planned	Actual	Parameter	Planned	Actual
Instrument	ACIS	ACIS	Obspar format version number	6	6
Detector	ACIS-235678	ACIS-235678	Obspar file type	PREDICTED	ACTUAL
Grating	NONE	NONE	Obspar update status	NONE	UPDATED
Data mode	FAINT	FAINT	On-chip summing requested	N	N
Observation mode	POINTING	POINTING	Subarray requested	NONE	NONE
Pointing RA	16.768812	16.74052164186416	Alternating exposures requested	N	N
Pointing Dec	32.150995	32.16410339061397	Primary exposure time	0.000000	3.2
Pointing Roll	120.377252	120.5489017360964			
SIM focus pos (mm)	-0.684267	-0.6828225247311905			
SIM defocus (mm)	0	0.001444936568705701			
SIM translation stage pos (mm)	-190.132523	-190.1425803651734			
SIM translation stage offset (mm)	0	0.01005778216563158			
Observation start time	176530764.184000	176529422.61003			
Observation start date	2003-08-06T04:18:20	2003-08-06T03:57:02			
Observation end time	176535764.184000	176536707.79784			
Observation end date	2003-08-06T05:41:40	2003-08-06T05:58:27			
Read mode	TIMED	TIMED			

### 2.3 Aspect



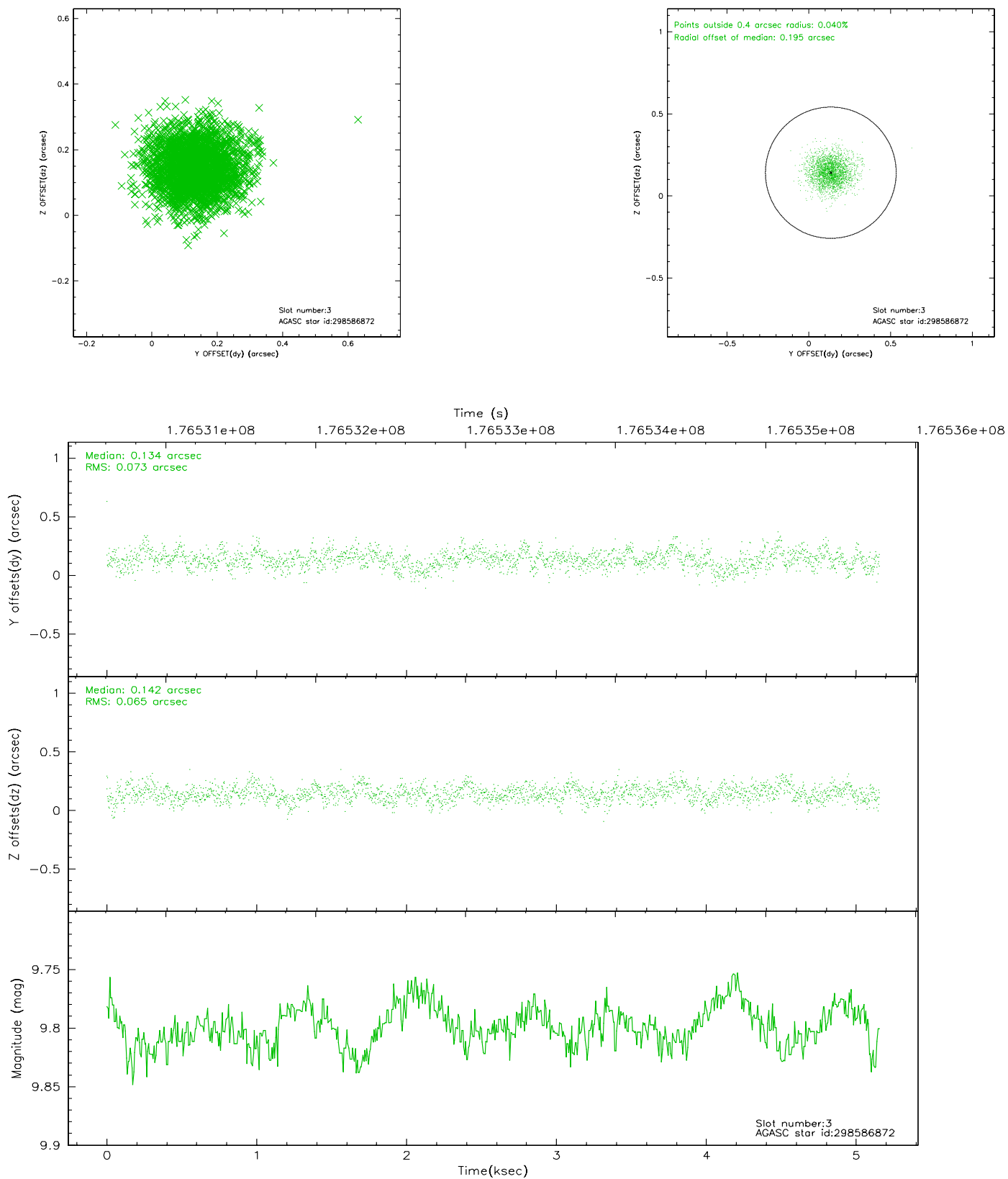


### Slot Statistics

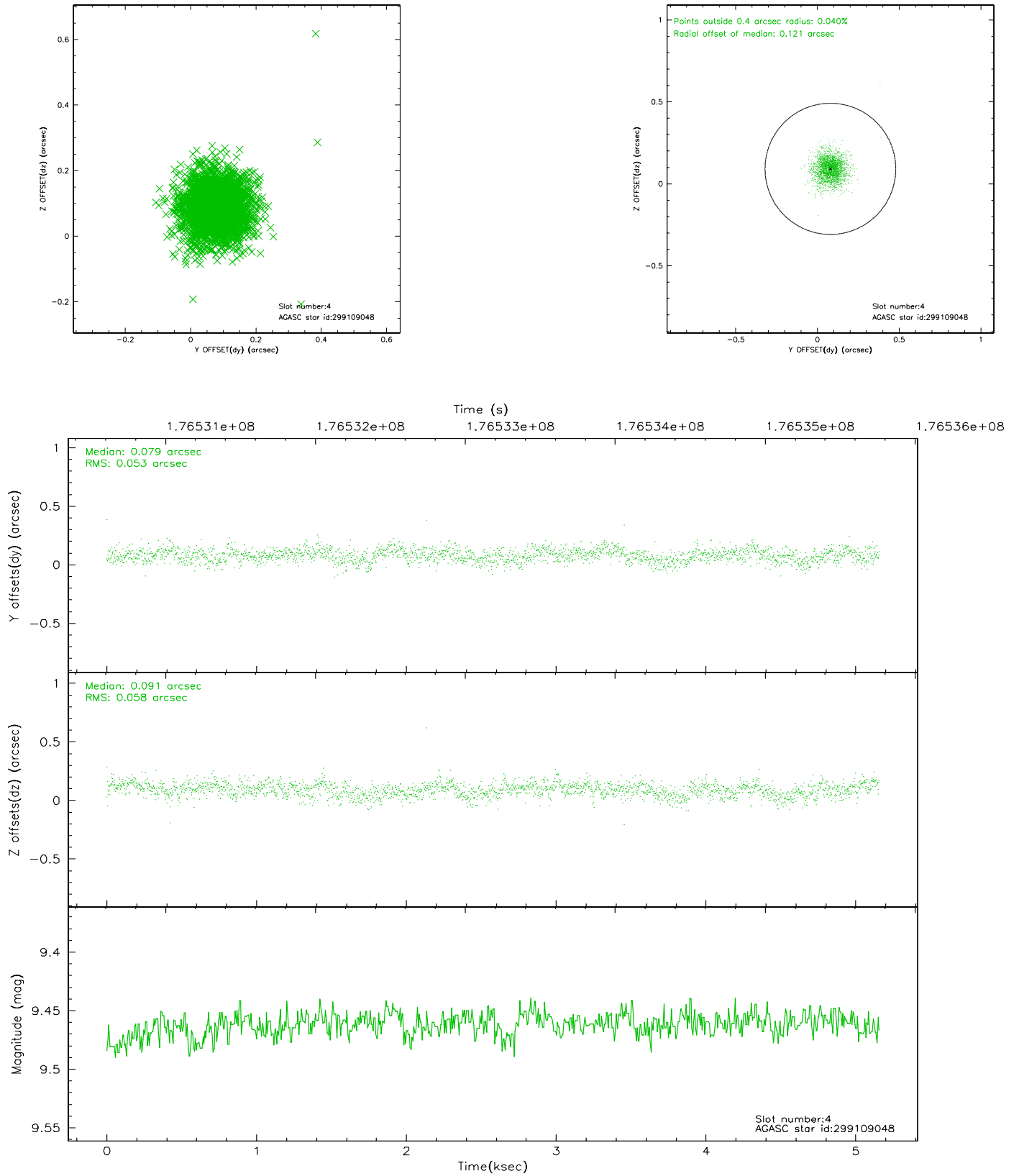
slot	status	id	mag	n_pts	med_dy	med_dz	dr1	dr2	ra	dec	mean_y	mean_z
0	FID	ACIS-S-2	7.11	1243	-0.021	-0.016	0.006	0.013	0.000000	0.000000	-757.84	-1728.64
1	FID	ACIS-S-4	7.21	1241	0.039	0.015	0.005	0.009	0.000000	0.000000	2154.98	178.60
2	FID	ACIS-S-5	7.23	1244	-0.048	0.010	0.006	0.010	0.000000	0.000000	-1809.15	173.68
3	GUIDE	298586872	9.80	2485	0.134	0.142	0.104	0.169	17.232552	31.767053	-1907.45	-526.71
4	GUIDE	299109048	9.46	2495	0.079	0.091	0.081	0.136	17.080774	31.893677	-1280.91	-354.92
5	GUIDE	299113448	9.15	2492	-0.097	-0.051	0.074	0.120	16.510971	32.256490	724.57	484.61
6	GUIDE	299116240	9.29	2493	-0.218	-0.038	0.075	0.122	16.424486	32.161924	565.97	884.90
7	GUIDE	298583832	8.91	2492	0.107	-0.144	0.083	0.128	16.568795	31.329003	-2241.34	2027.08

## 2.4 Star Slots

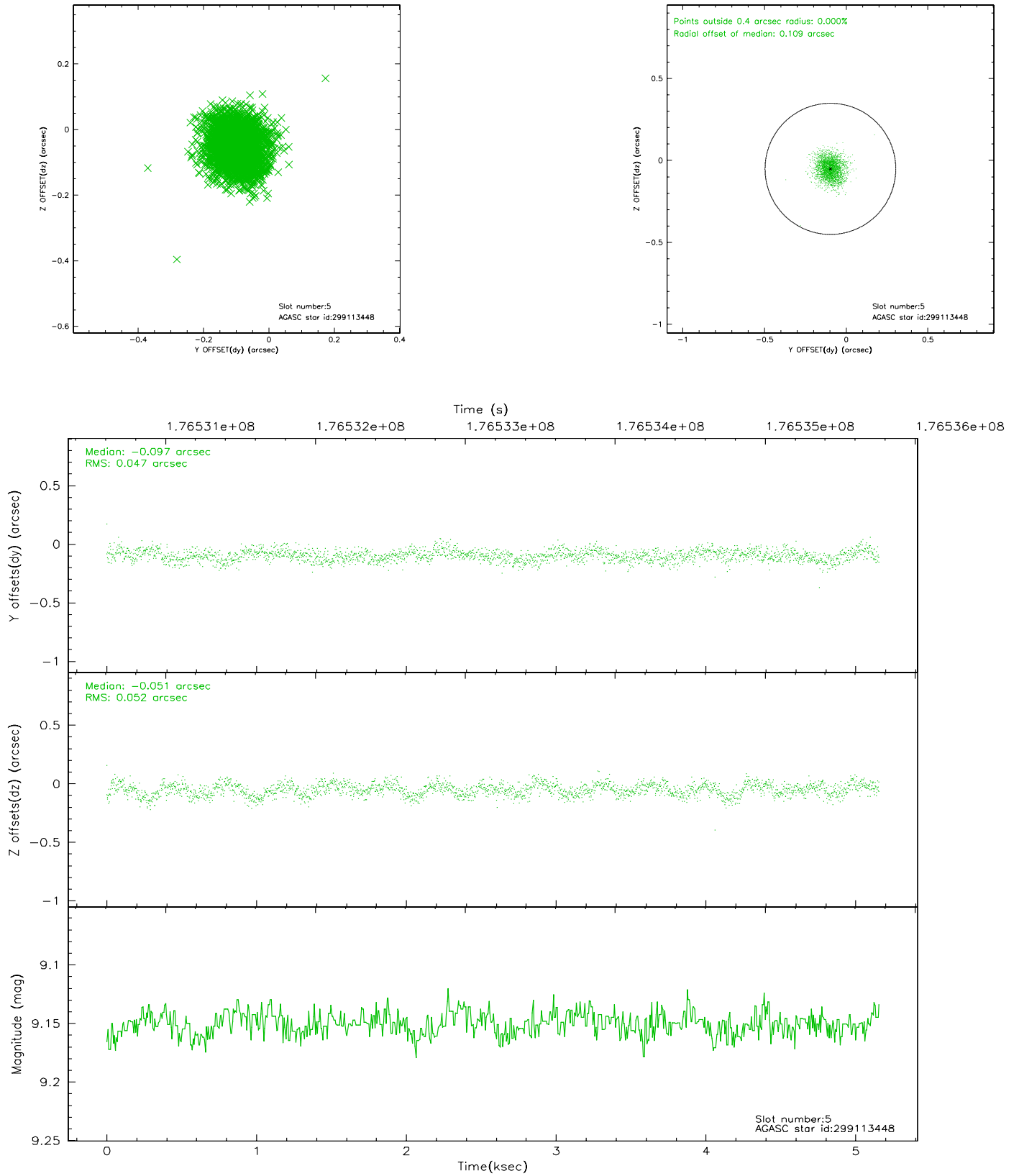
### 2.4.1 Slot 3



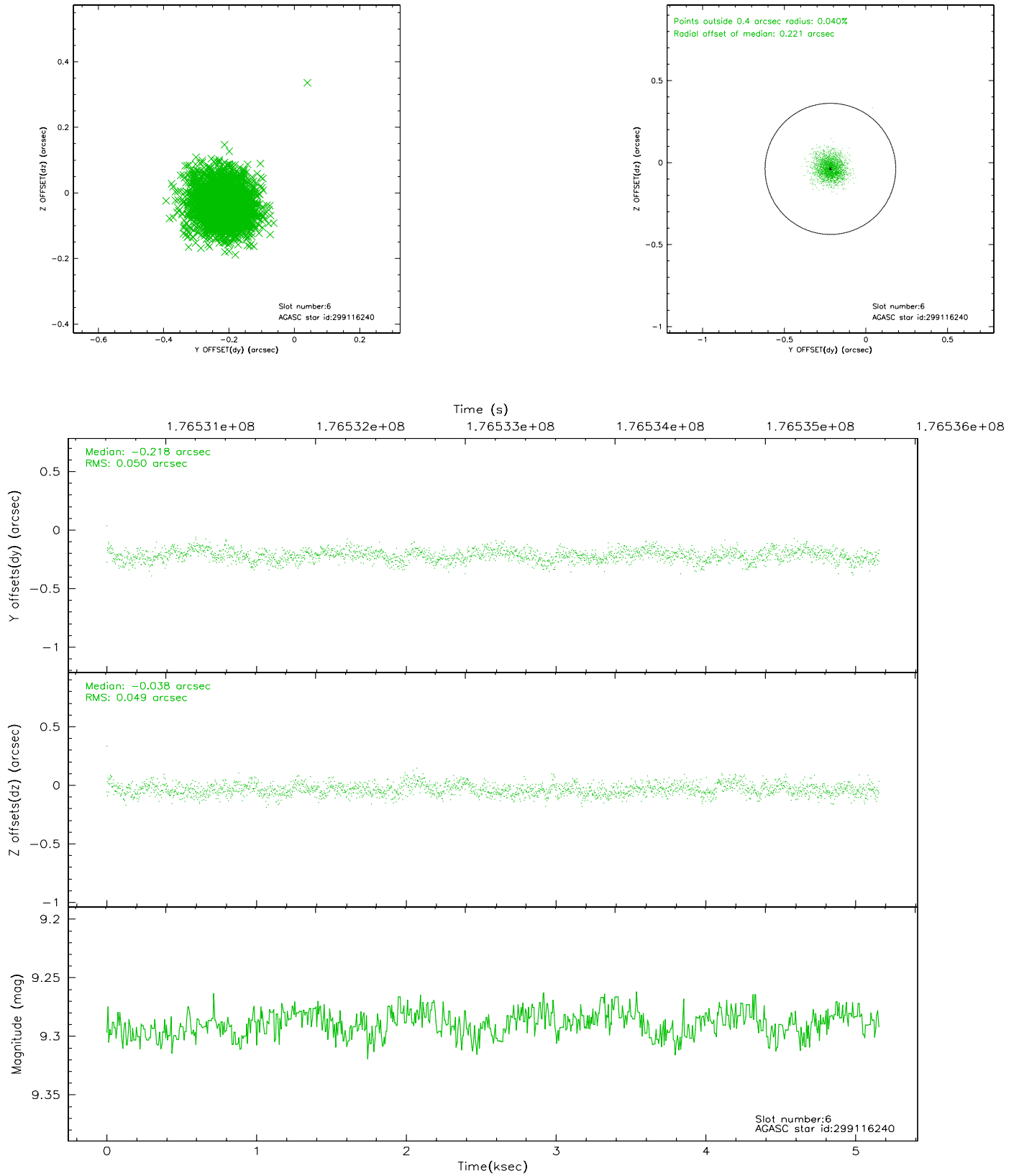
## 2.4.2 Slot 4



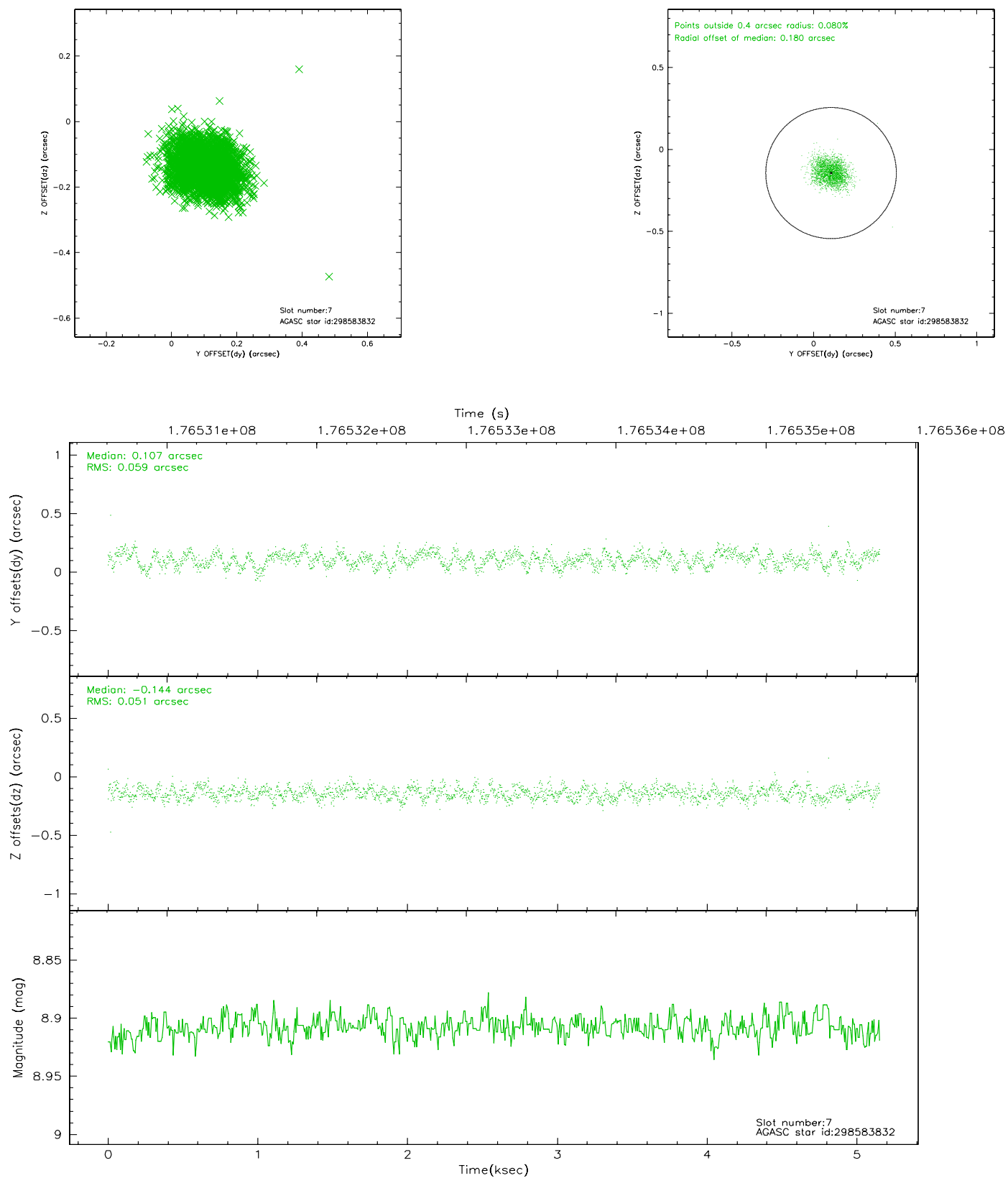
### 2.4.3 Slot 5



## 2.4.4 Slot 6

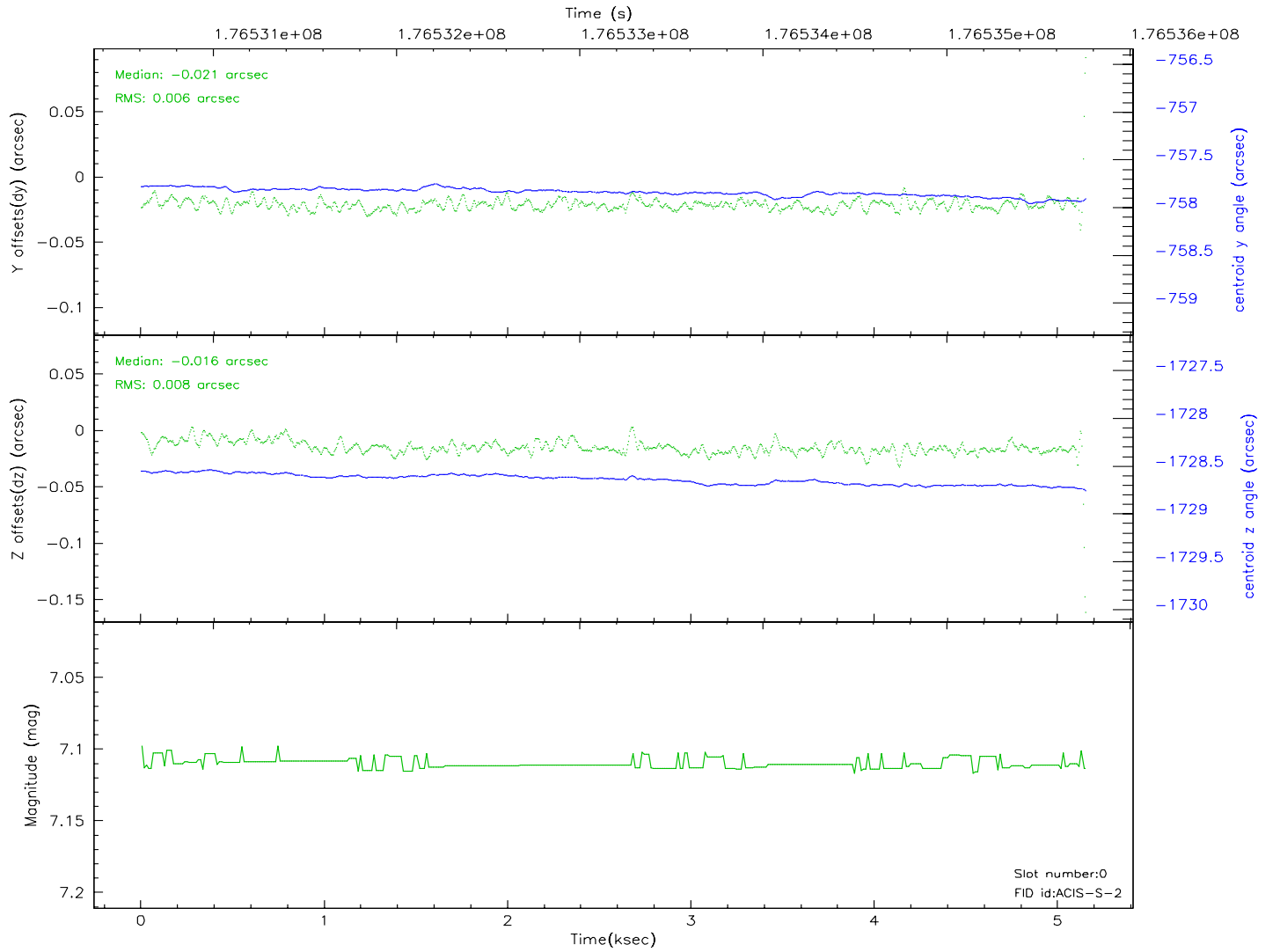
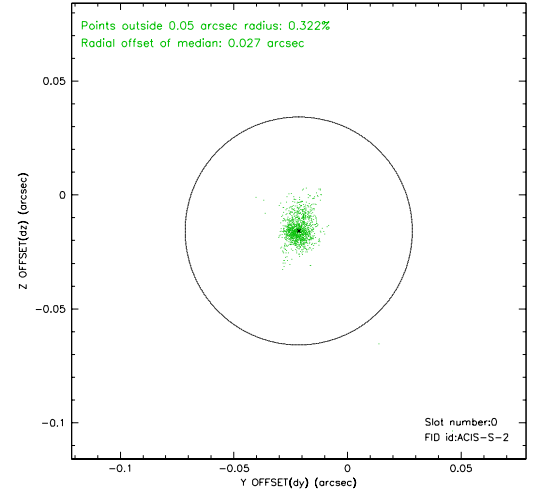
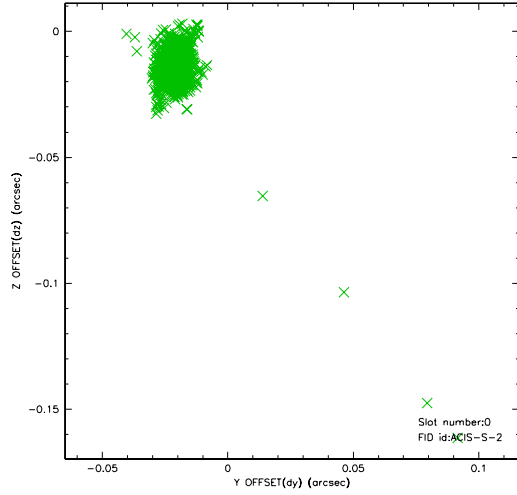


## 2.4.5 Slot 7

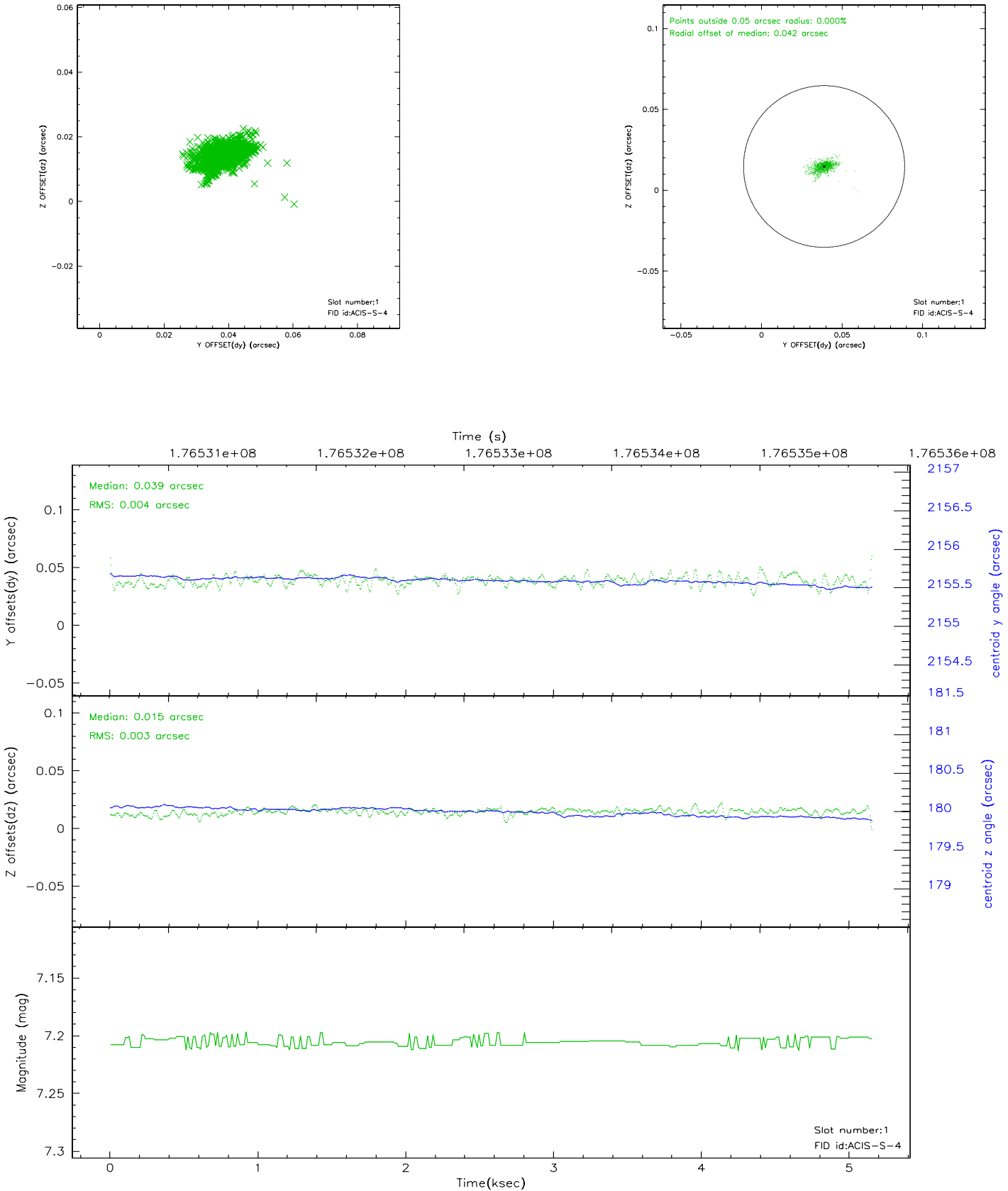


## 2.5 FID Slots

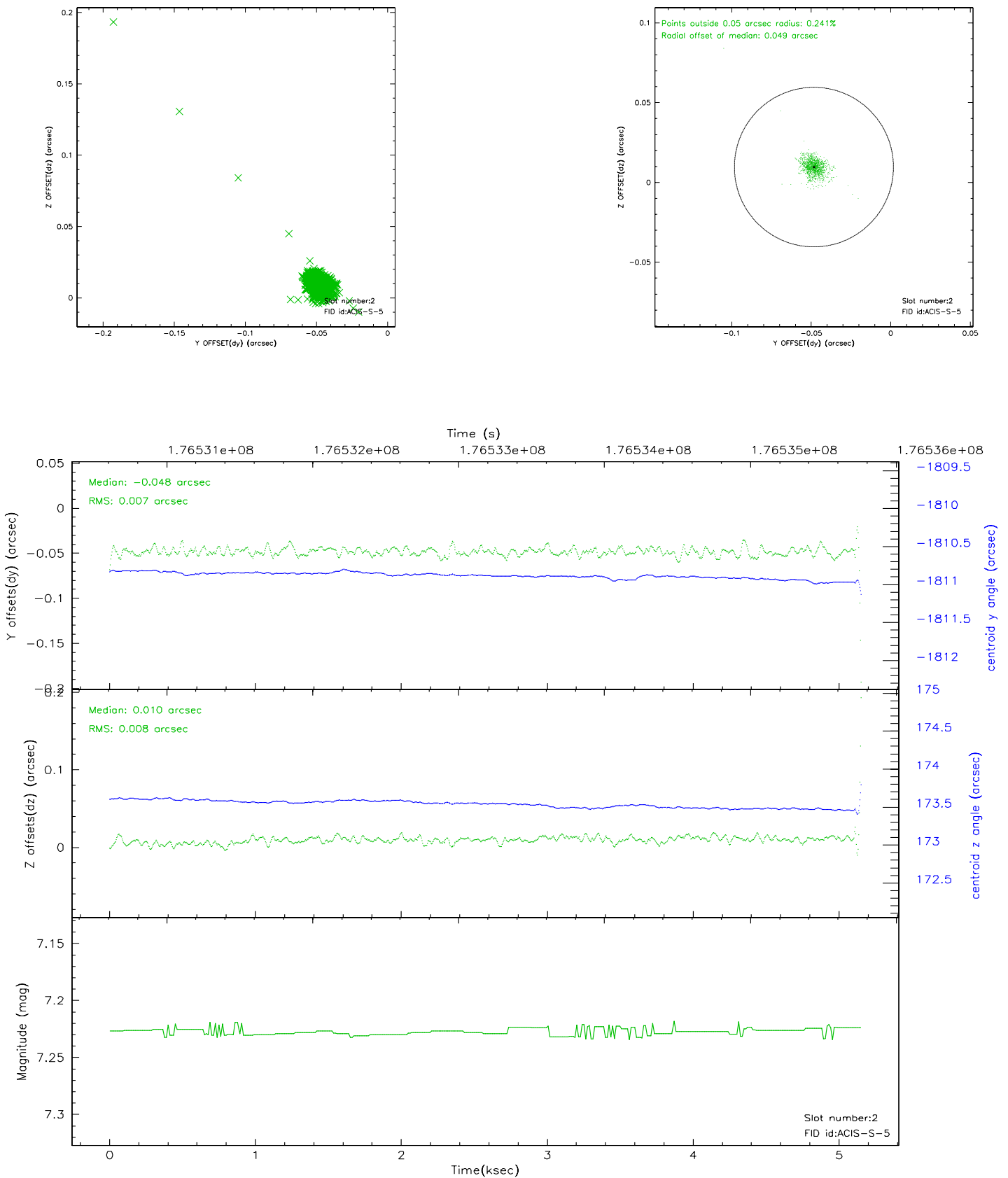
### 2.5.1 Slot 0



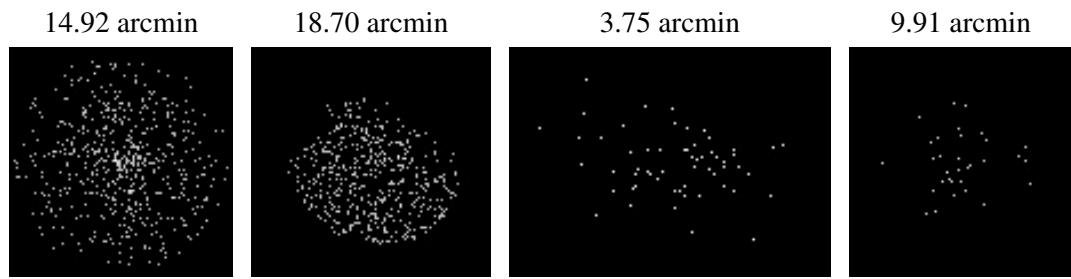
2.5.2 Slot 1



## 2.5.3 Slot 2



### 3 Point Sources



## A Summary

### A.1 Status

V&V Scientist	Jen Lauer
V&V Date (YYYY-MM-DD)	2006.07.13
V&V Edition	1
V&V Disposition and Status	OK
V&V Charge Time	5.145

### A.2 Comments