

V&V Reference Report

L2 ASCDS Version : 7.6.8

Observation 3459 - L2 Version 001
Chandra X-Ray Center

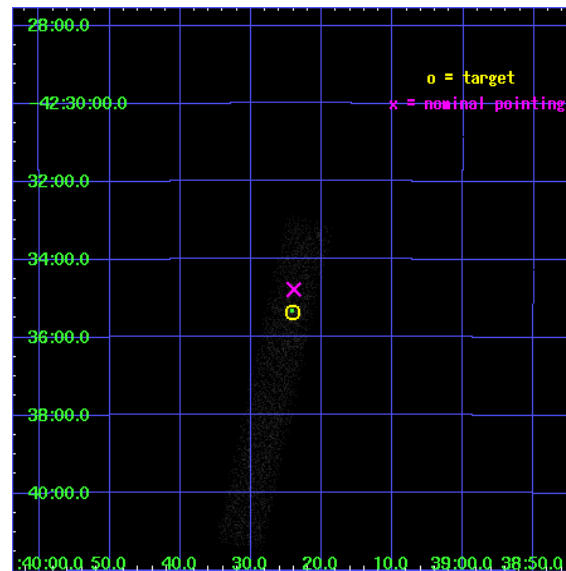
L2 Processing Date : Aug 2 2006

Contents

1	Front	2
2	OBI	3
2.1	OBI	3
2.1.1	Images	3
2.1.2	Bias	3
2.1.3	Parameters	4
2.1.4	Events	4
2.2	Compared Parameters	5
2.3	Aspect	6
2.4	Star Slots	9
2.4.1	Slot 3	9
2.4.2	Slot 4	10
2.4.3	Slot 5	11
2.4.4	Slot 6	12
2.4.5	Slot 7	13
2.5	FID Slots	14
2.5.1	Slot 0	14
2.5.2	Slot 1	15
2.5.3	Slot 2	16
3	Point Sources	17
A	Summary	18
A.1	Status	18
A.2	Comments	18

1 Front

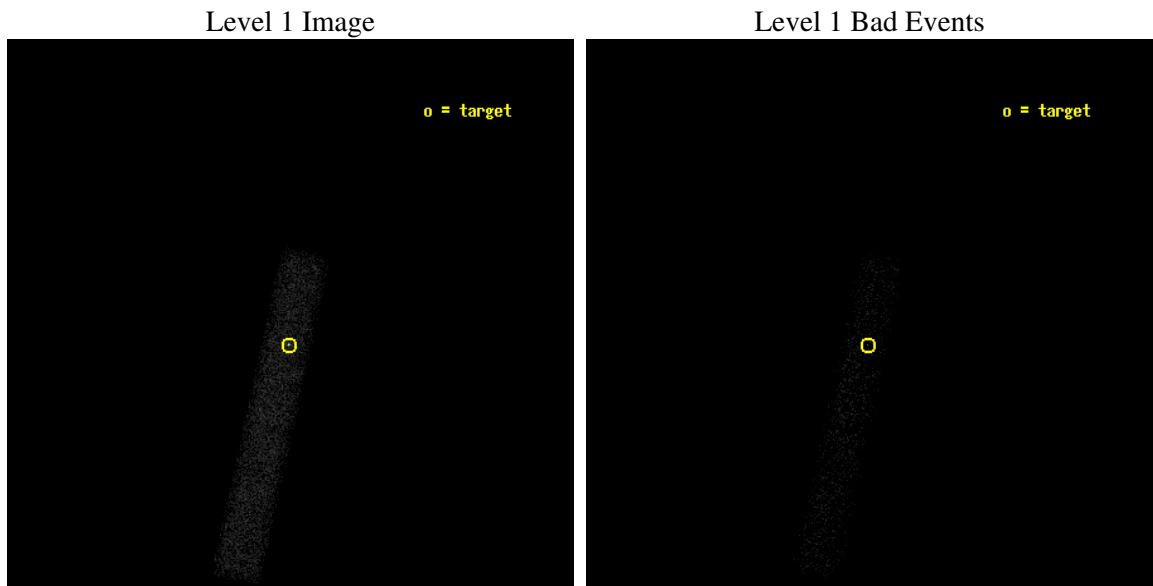
seq_num	700615
obs_id	3459
title	OBSERVATIONS OF THE OPTICAL JET OF MH 2136-428
observer	DR. PAOLO PADOVANI
object	MH 2136-428
dtcycle	0
cycle	P
ra_targ	324.850417
dec_targ	-42.58925
ra_nom	324.8498700967
dec_nom	-42.579619507973
roll_nom	102.43726555551
revision	2
ontime	9896.8001474738
livetime	8975.8753378141
ontime7	9896.8001474738
l2events	6146



2 OBI

2.1 OBI

2.1.1 Images



2.1.2 Bias

Chip 7



2.1.3 Parameters

obi_num	0
ascdsver	7.6.8
caldsver	3.2.2
date	2006-08-03T02:01:28
revision	2

sched_exp_time	9712.000000
ontime	10961.039474607
ontime7	10961.039474607
l1events	13736

2.1.4 Events

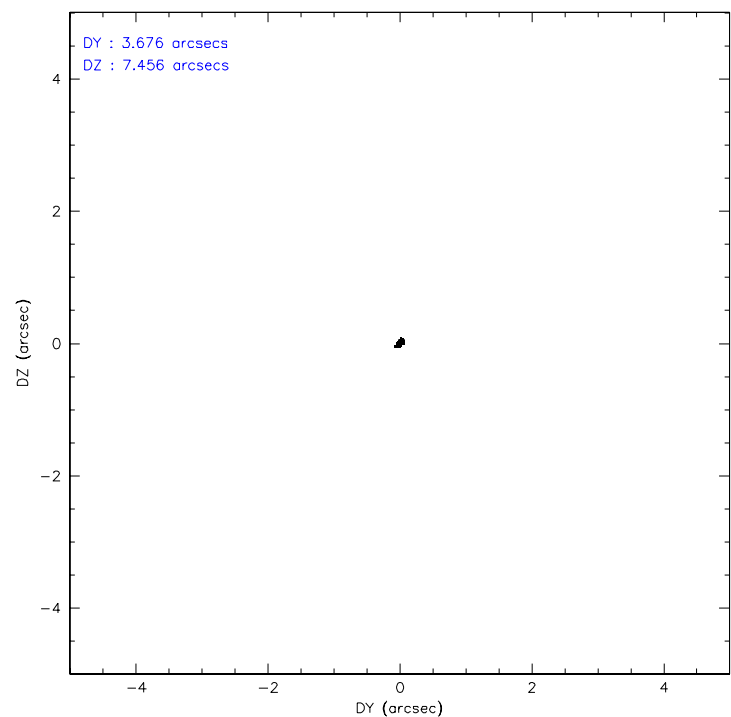
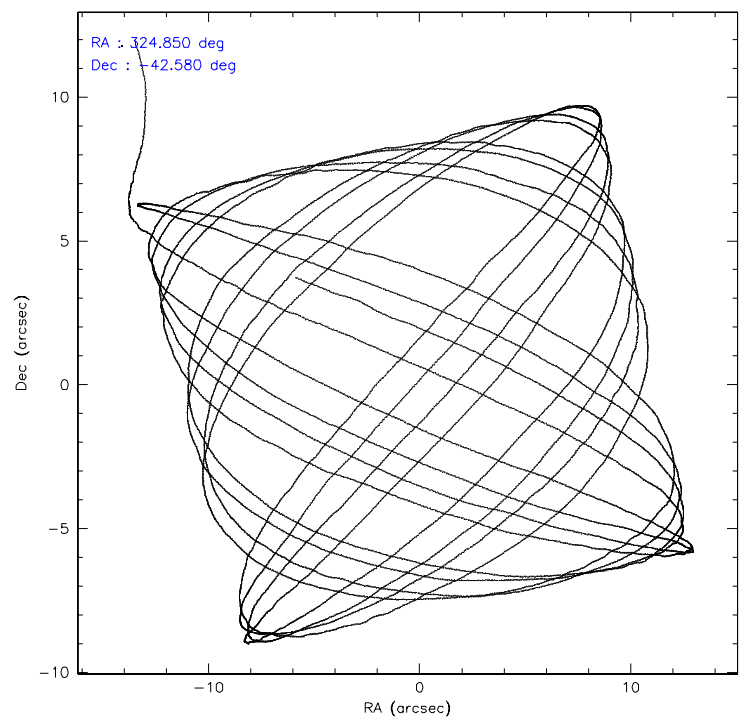
	ccd 7
level 1 events	13736
rejected events	7408
rejected %	53%

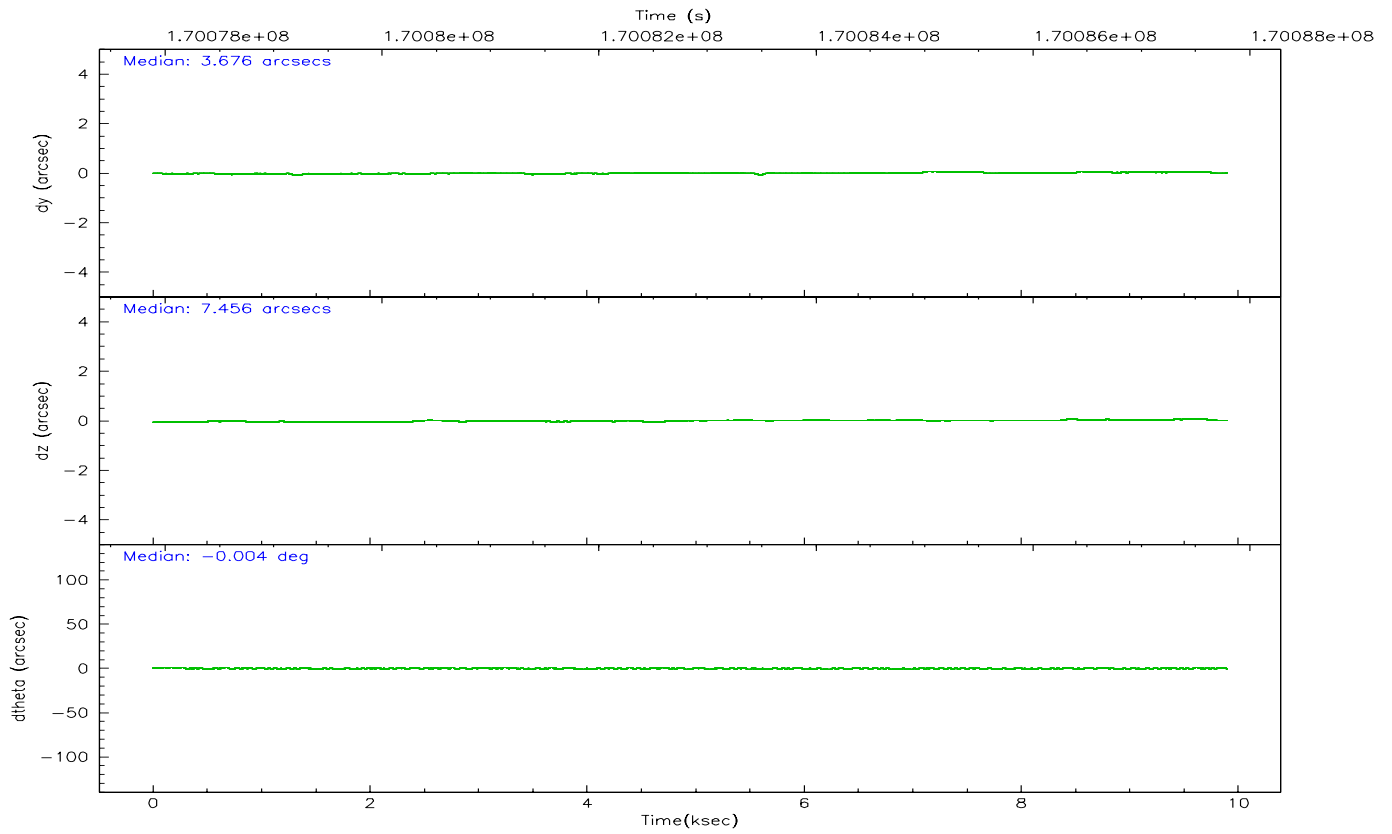
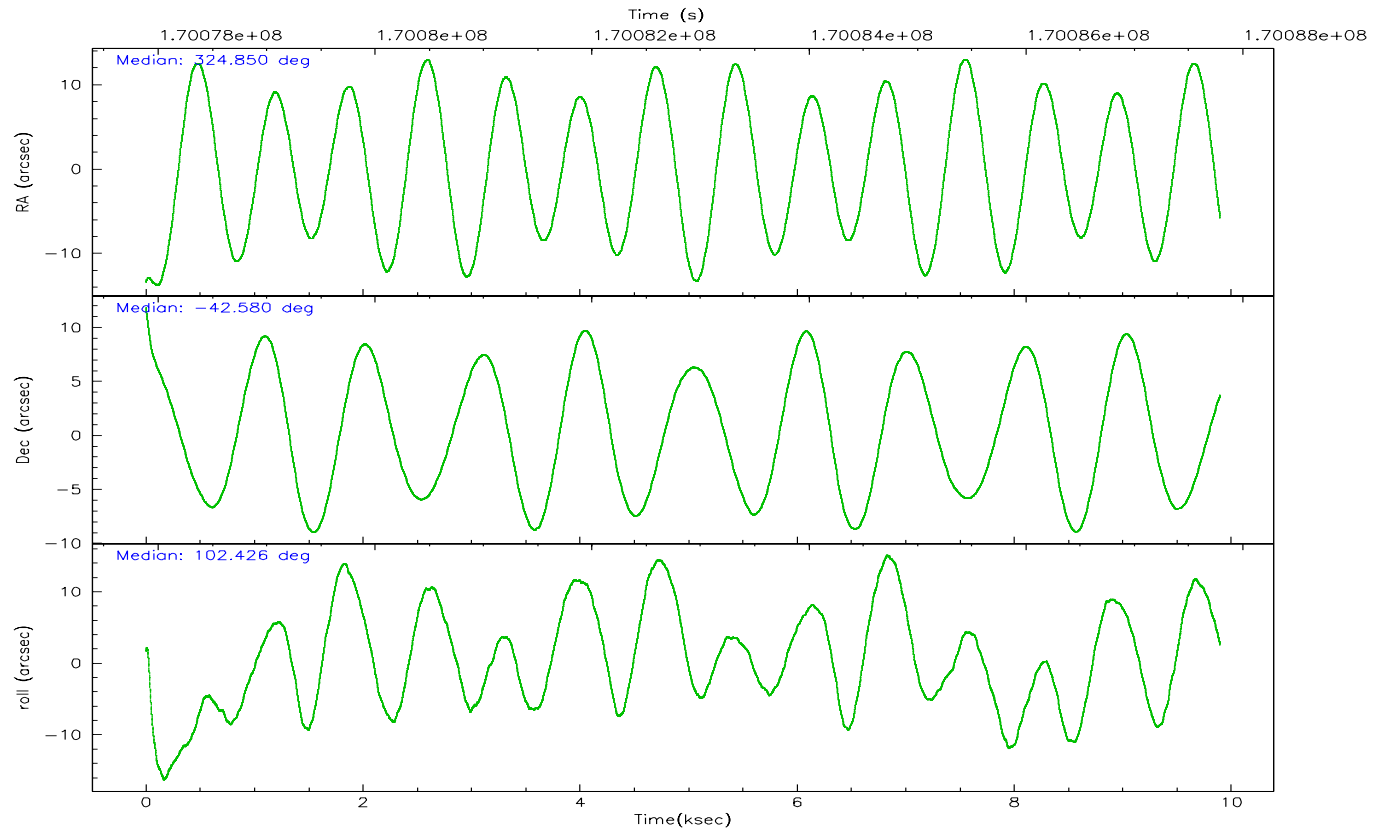
	ccd 7
grade 0 events	1087
	7%
grade 1 events	13
	0%
grade 2 events	1485
	10%
grade 3 events	716
	5%
grade 4 events	687
	5%
grade 5 events	857
	6%
grade 6 events	2942
	21%
grade 7 events	5949
	43%

2.2 Compared Parameters

Parameter	Planned	Actual	Parameter	Planned	Actual
Instrument	ACIS	ACIS	Obspar format version number	6	6
Detector	ACIS-7	ACIS-7	Obspar file type	PREDICTED	ACTUAL
Grating	NONE	NONE	Obspar update status	NONE	UPDATED
Data mode	FAINT	FAINT	On-chip summing requested	N	N
Observation mode	POINTING	POINTING	Subarray requested	1/8	1/8
Pointing RA	324.875218	324.8498700966999	Subarray start row	0	449
Pointing Dec	-42.599430	-42.57961950797283	Subarray row count	1024	128
Pointing Roll	102.297786	102.4372655555141	Alternating exposures requested	N	N
SIM focus pos (mm)	-0.684267	-0.6828225247311905	Primary exposure time	0.000000	0.4
SIM defocus (mm)	0	0.001444936568705701			
SIM translation stage pos (mm)	-190.132523	-190.1425803651734			
SIM translation stage offset (mm)	0	0.01005778216563158			
Observation start time	170078073.184000	170076824.91055			
Observation start date	2003-05-23T11:53:29	2003-05-23T11:33:44			
Observation end time	170087785.184000	170088572.94855			
Observation end date	2003-05-23T14:35:21	2003-05-23T14:49:32			
Read mode	TIMED	TIMED			

2.3 Aspect



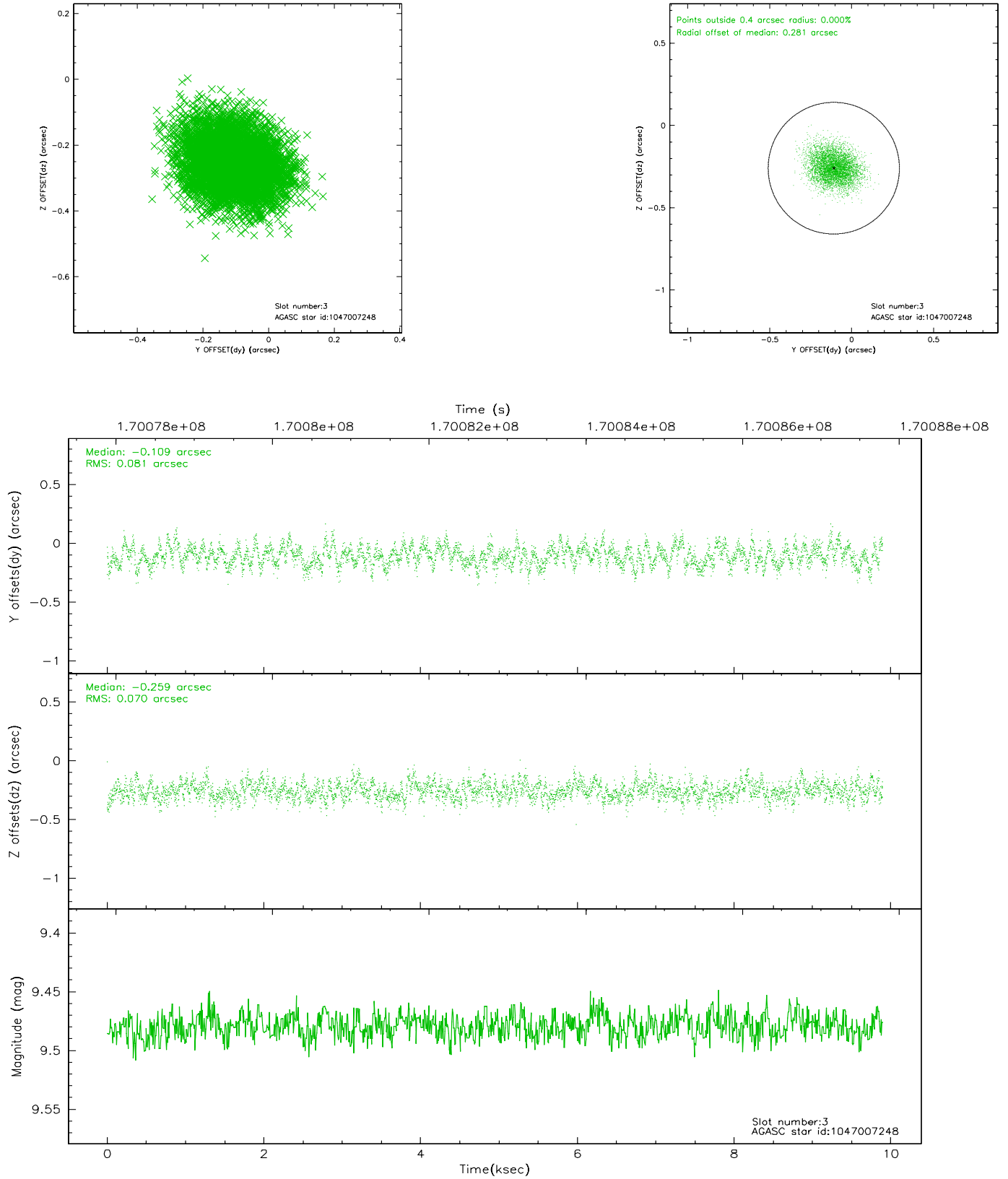


Slot Statistics

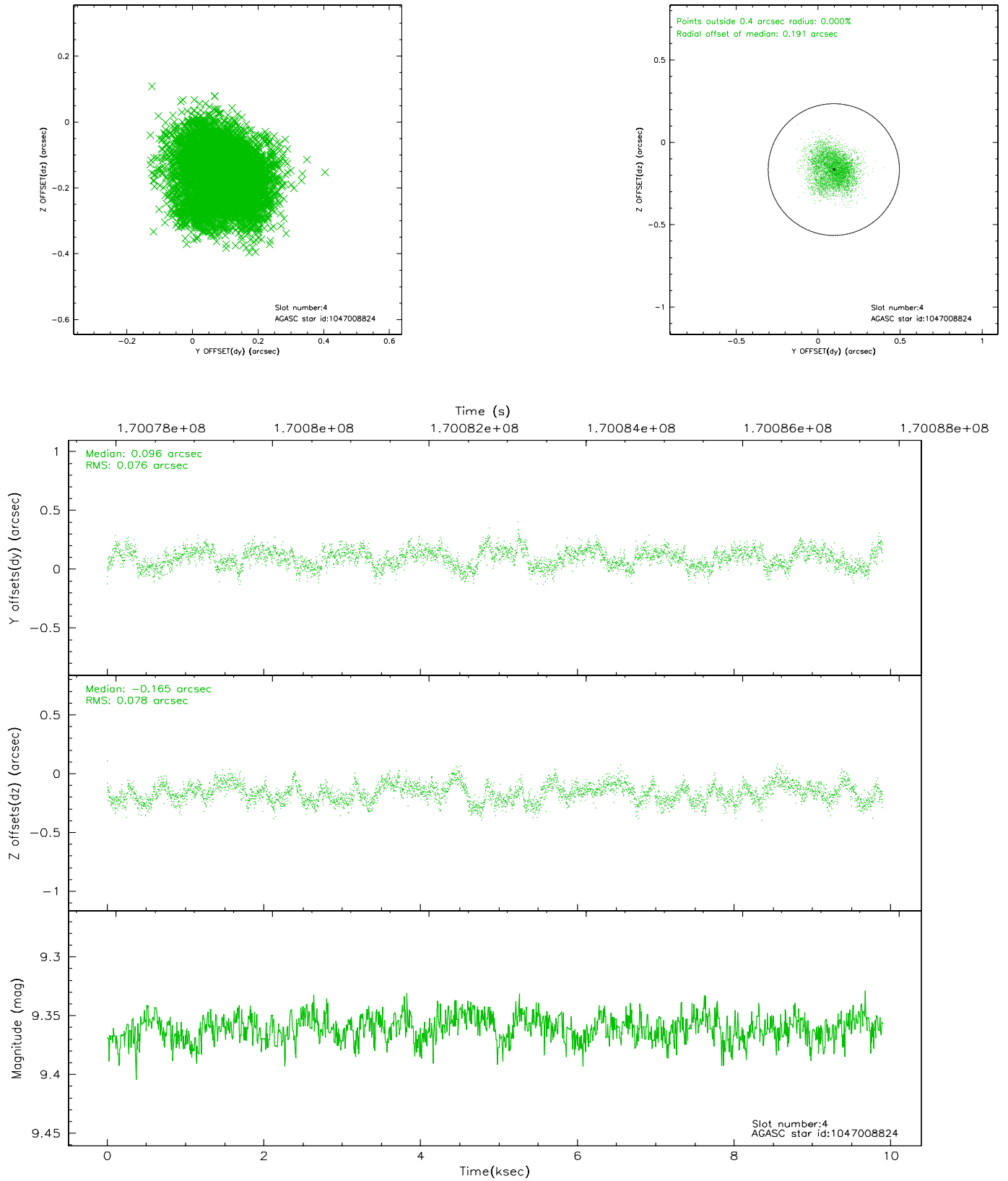
slot	status	id	mag	n_pts	med_dy	med_dz	dr1	dr2	ra	dec	mean_y	mean_z
0	FID	ACIS-S-2	7.11	2414	-0.003	0.016	0.006	0.011	0.000000	0.000000	-756.35	-1728.56
1	FID	ACIS-S-4	7.20	2414	-0.018	0.010	0.006	0.010	0.000000	0.000000	2156.68	179.35
2	FID	ACIS-S-6	7.35	2414	-0.006	-0.018	0.007	0.012	0.000000	0.000000	406.34	817.33
3	GUIDE	1047007248	9.48	4825	-0.109	-0.259	0.115	0.182	324.085136	-42.463397	915.60	1947.96
4	GUIDE	1047008824	9.36	4829	0.096	-0.165	0.118	0.181	324.668991	-42.710894	-275.93	619.07
5	GUIDE	1047136976	9.82	4762	0.147	0.227	0.144	0.226	325.710863	-42.779978	-1115.26	-2016.20
6	GUIDE	1047531480	6.64	4829	0.096	-0.142	0.065	0.101	324.966930	-43.131997	-1924.54	172.26
7	GUIDE	1047140560	9.79	4824	-0.233	0.332	0.126	0.201	325.697507	-42.199920	927.84	-2446.01

2.4 Star Slots

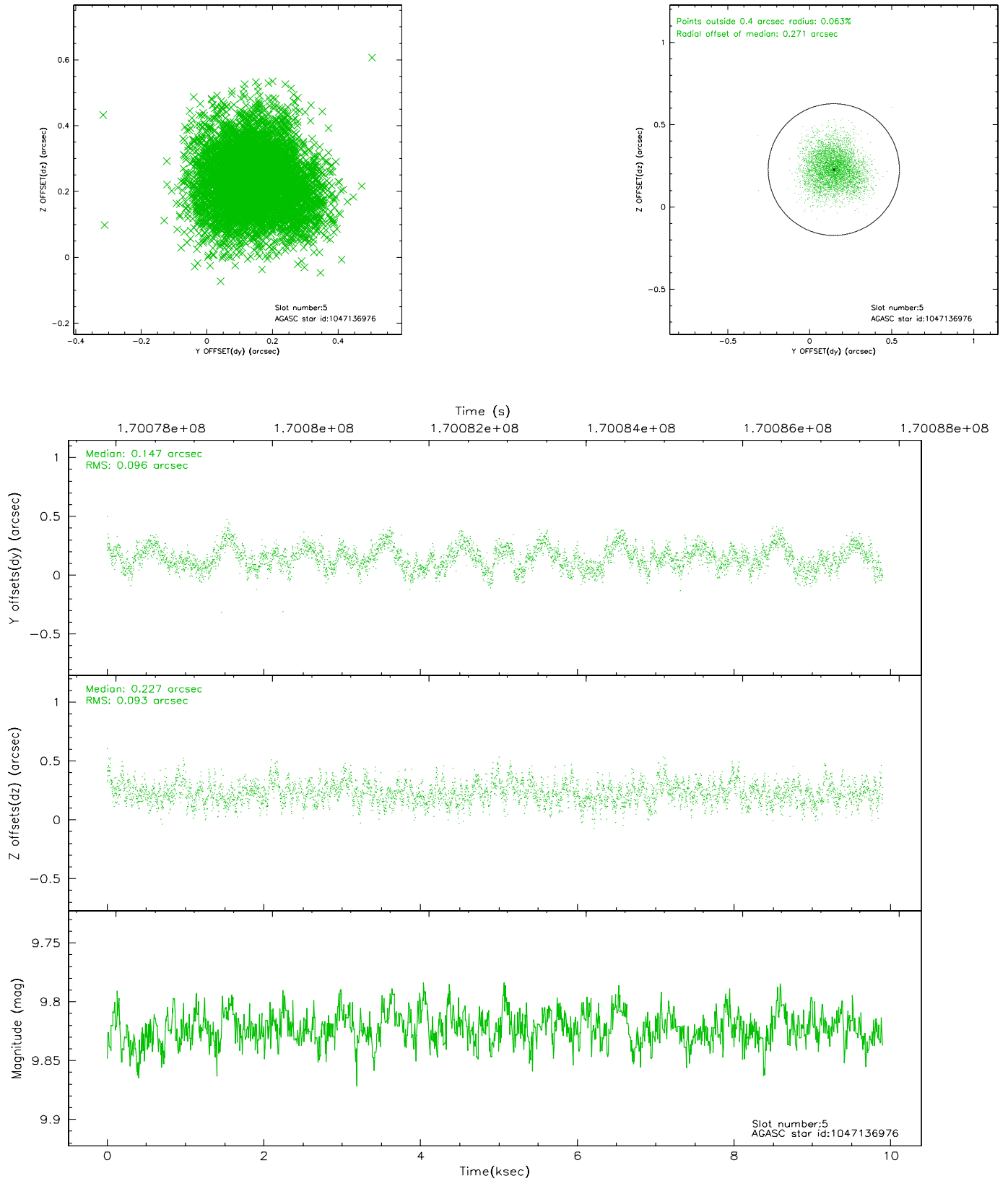
2.4.1 Slot 3



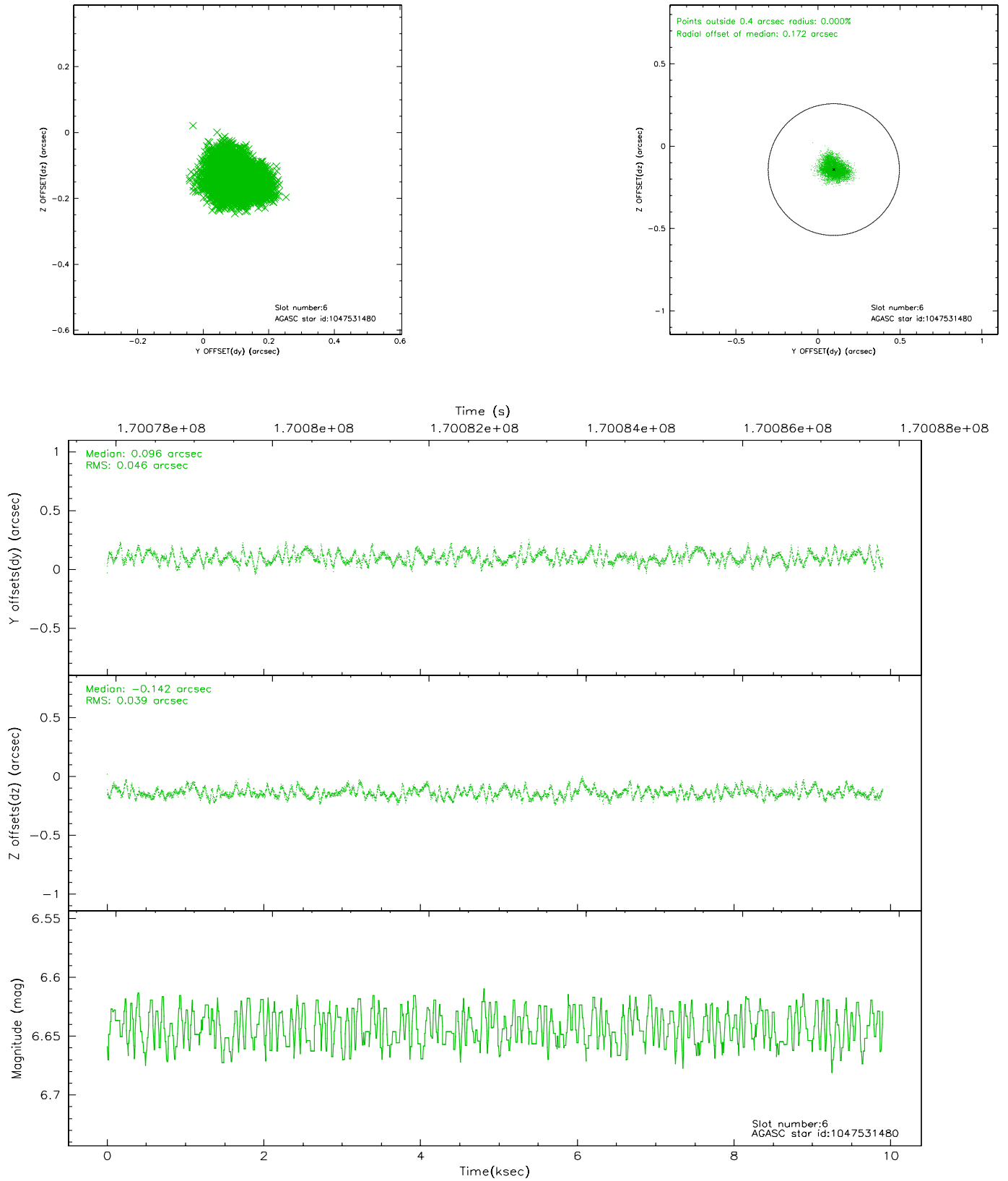
2.4.2 Slot 4



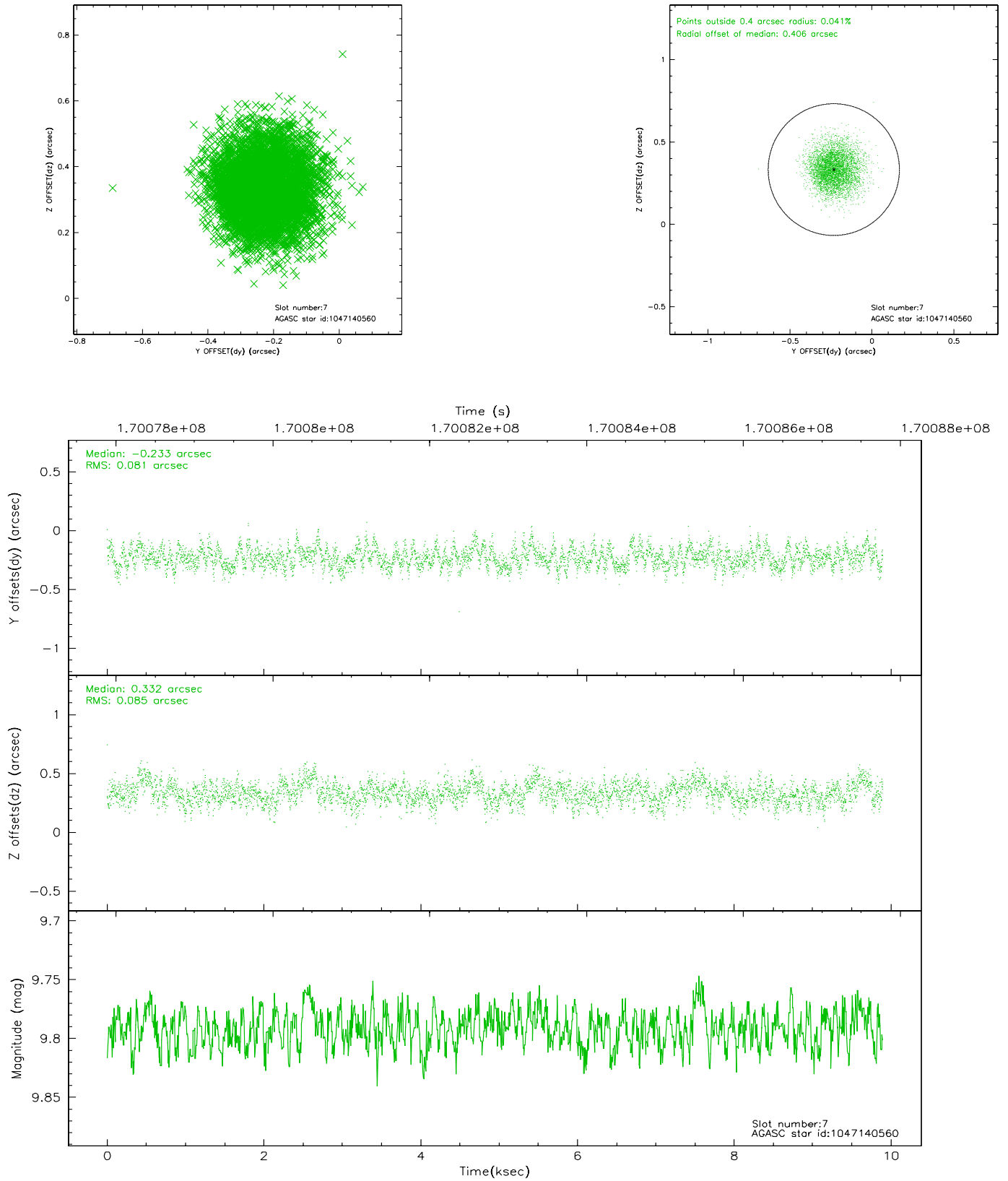
2.4.3 Slot 5



2.4.4 Slot 6

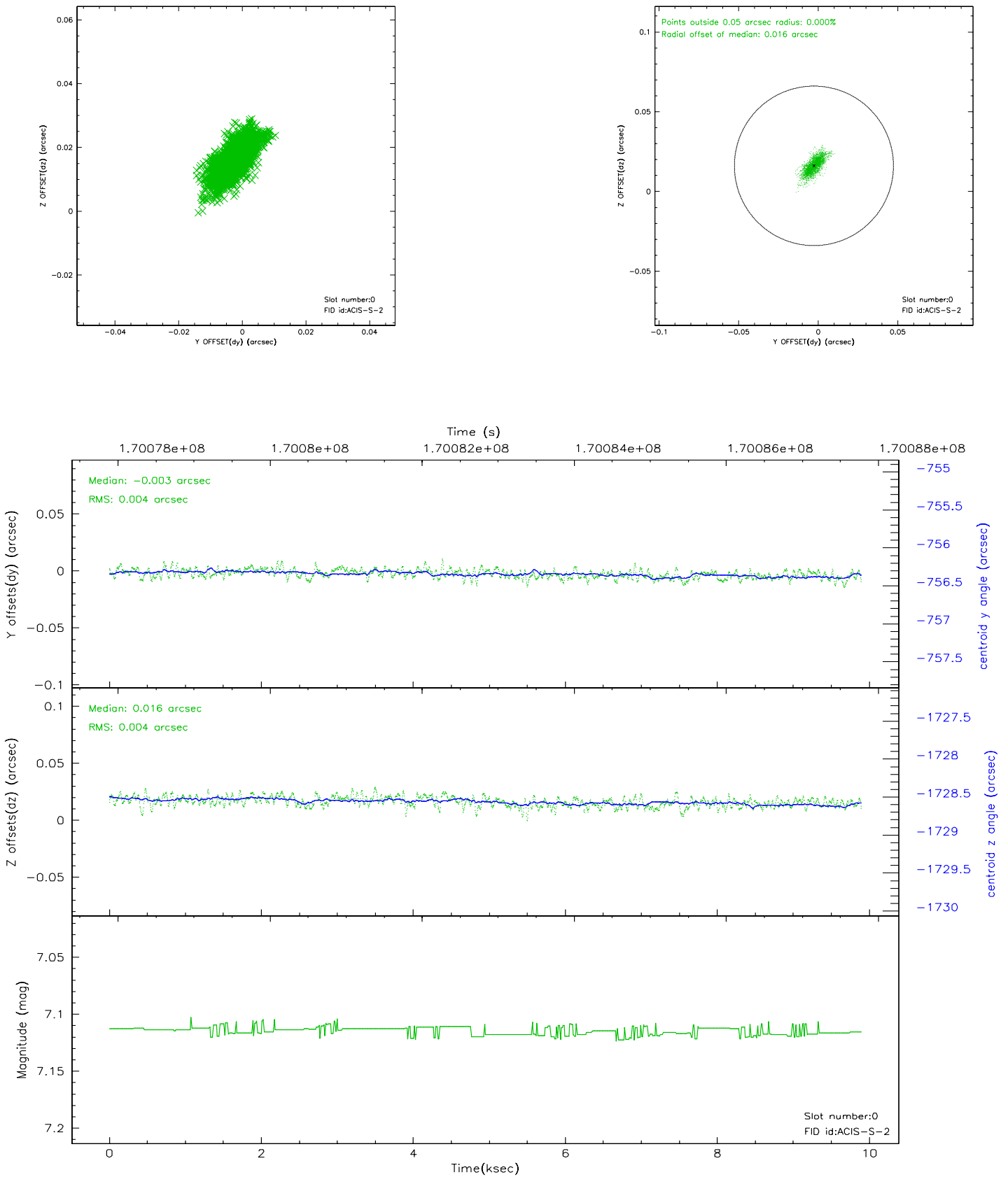


2.4.5 Slot 7

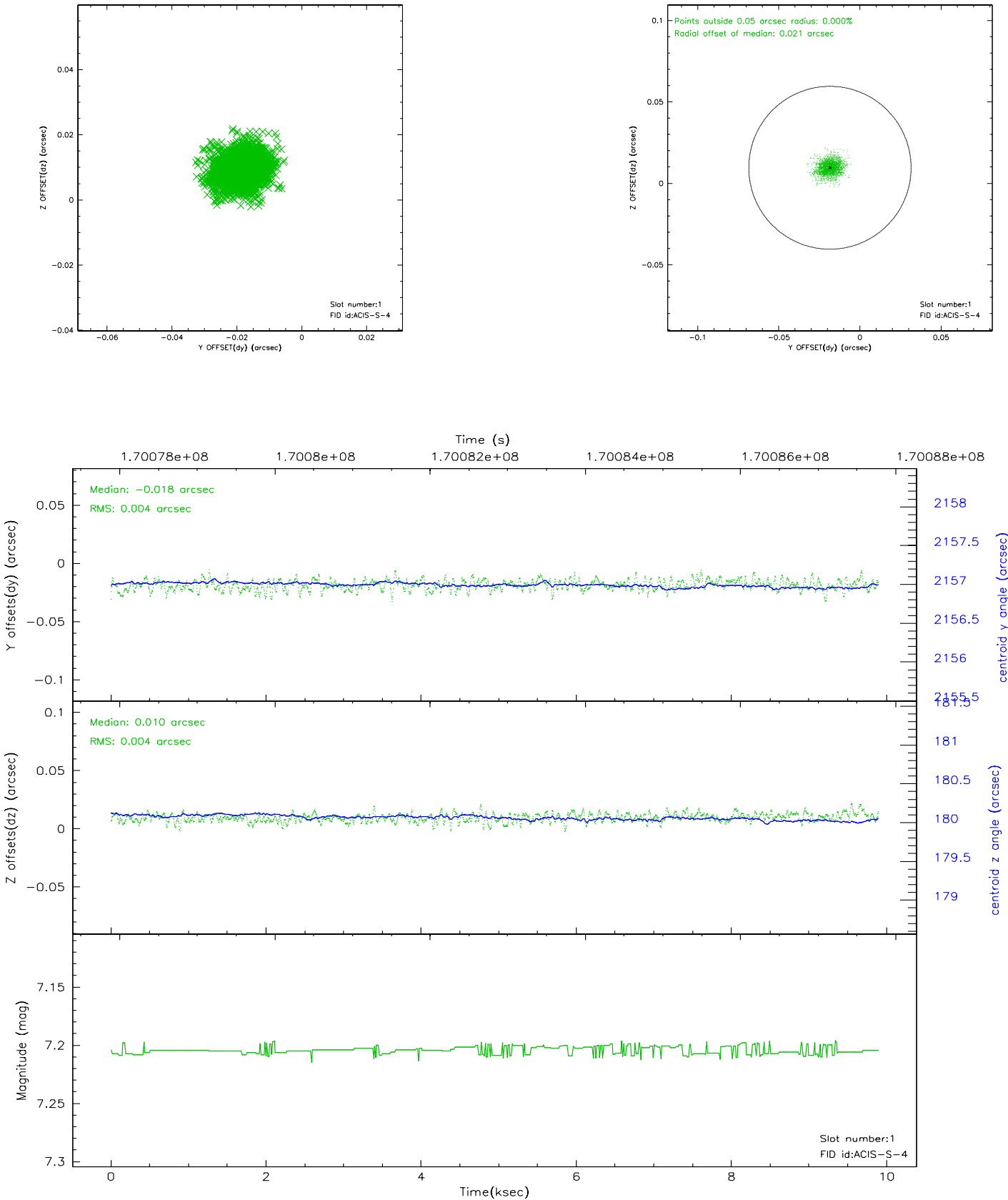


2.5 FID Slots

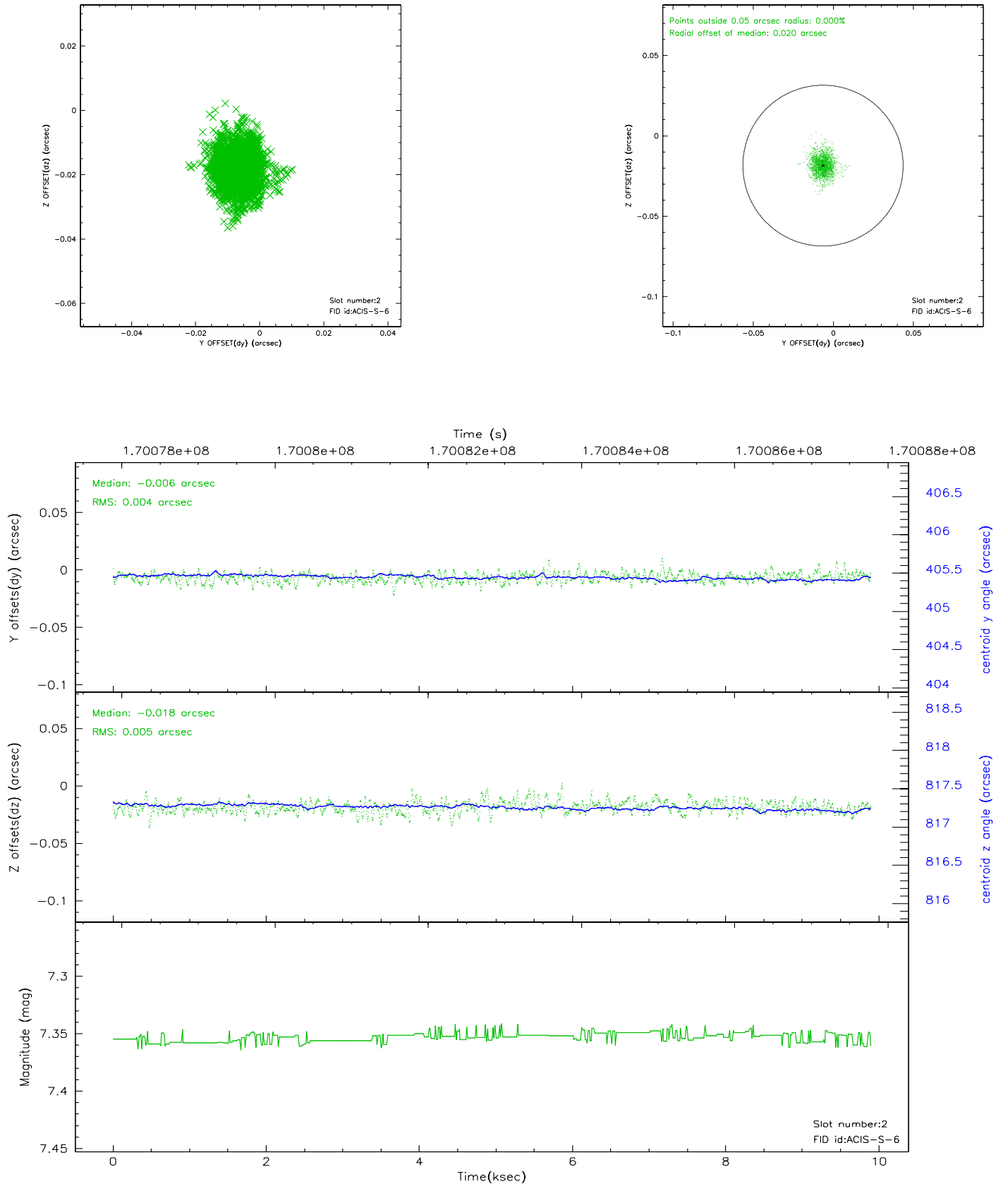
2.5.1 Slot 0



2.5.2 Slot 1



2.5.3 Slot 2



3 Point Sources

A Summary

A.1 Status

V&V Scientist	Beth Sundheim
V&V Date (YYYY-MM-DD)	2006.08.03
V&V Edition	1
V&V Disposition and Status	OK
V&V Charge Time	9.896

A.2 Comments