

# V&V Reference Report

## L2 ASCDS Version : 7.6.8

Observation 3949 - L2 Version 001  
Chandra X-Ray Center

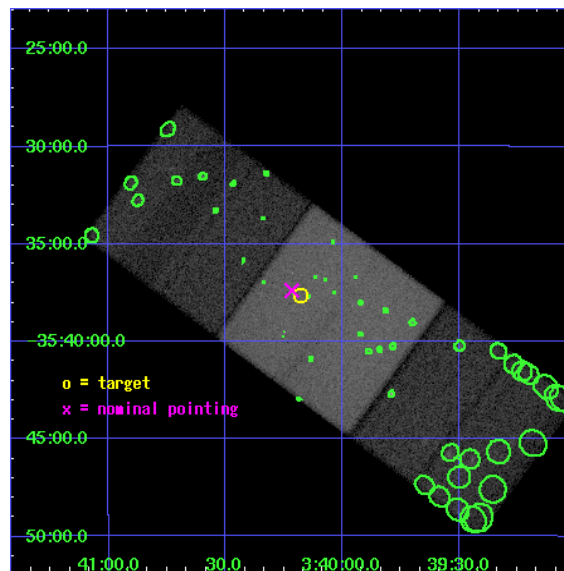
L2 Processing Date : Jun 29 2006

## Contents

<b>1</b>	<b>Front</b>	<b>2</b>
<b>2</b>	<b>OBI</b>	<b>3</b>
2.1	OBI . . . . .	3
2.1.1	Images . . . . .	3
2.1.2	Bias . . . . .	3
2.1.3	Parameters . . . . .	4
2.1.4	Events . . . . .	4
2.2	Compared Parameters . . . . .	5
2.3	Aspect . . . . .	6
2.4	Star Slots . . . . .	9
2.4.1	Slot 3 . . . . .	9
2.4.2	Slot 4 . . . . .	10
2.4.3	Slot 5 . . . . .	11
2.4.4	Slot 6 . . . . .	12
2.4.5	Slot 7 . . . . .	13
2.5	FID Slots . . . . .	14
2.5.1	Slot 0 . . . . .	14
2.5.2	Slot 1 . . . . .	15
2.5.3	Slot 2 . . . . .	16
<b>3</b>	<b>Point Sources</b>	<b>17</b>
<b>A</b>	<b>Summary</b>	<b>18</b>
A.1	Status . . . . .	18
A.2	Comments . . . . .	18

# 1 Front

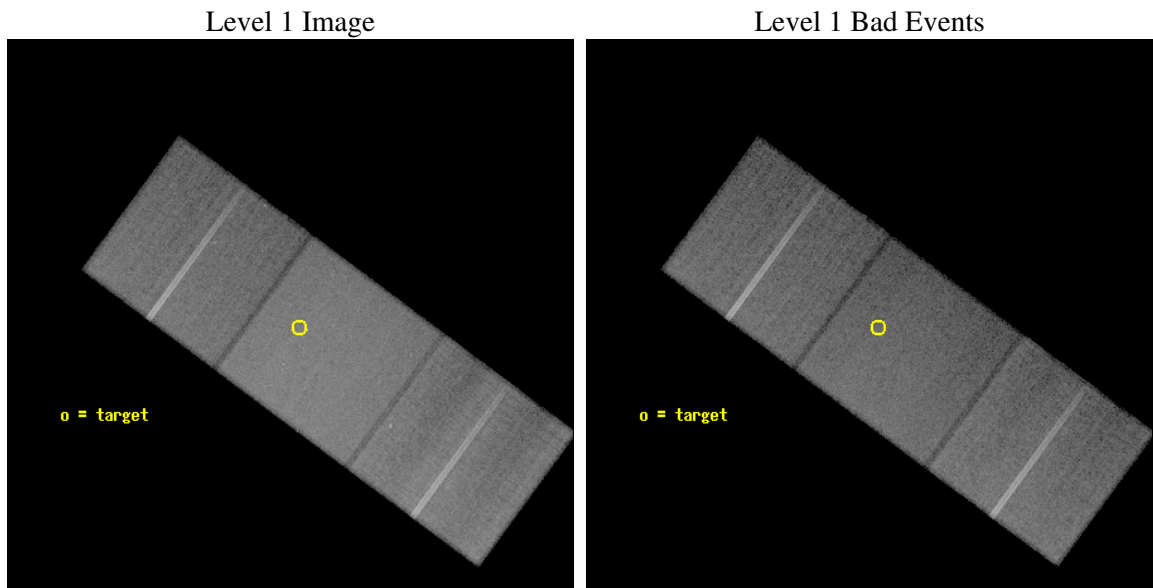
seq_num	600323
obs_id	3949
title	THE IMPENDING DESTRUCTION OF NGC1427A
observer	Dr. Michael Gregg
object	NGC1427A
dtcycle	0
cycle	P
ra_targ	55.04375
dec_targ	-35.627222
ra_nom	55.05389347371
dec_nom	-35.623246869914
roll_nom	36.43177532078
revision	2
ontime	66327.59987247
livetime	65460.980950467
ontime6	66318.177021444
ontime7	66327.59987247
ontime8	66321.317911983
l2events	386885



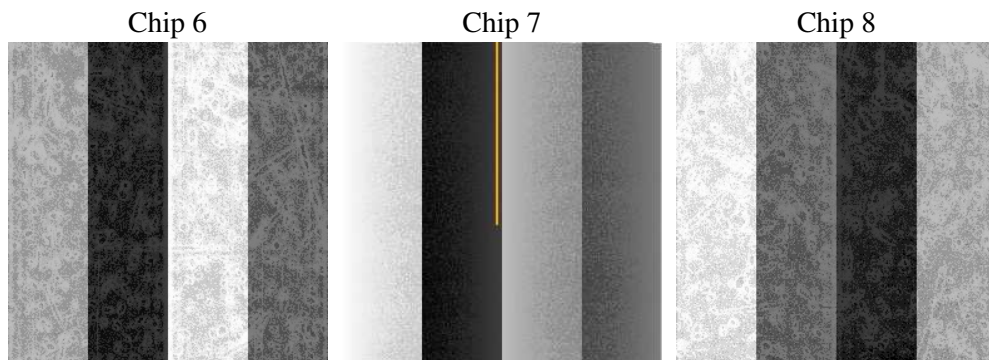
## 2 OBI

### 2.1 OBI

#### 2.1.1 Images



#### 2.1.2 Bias



### 2.1.3 Parameters

obi_num	0
ascdsver	7.6.8
caldsver	3.2.2
date	2006-06-29T14:18:59
revision	2

sched_exp_time	66162.186000
ontime	67010.279971868
ontime6	67000.857100904
ontime7	67010.279971868
ontime8	67003.997971565
l1events	1596587

### 2.1.4 Events

	<b>ccd 6</b>	<b>ccd 7</b>	<b>ccd 8</b>
level 1 events	434150	607862	554575
rejected events	364697	344823	416340
rejected %	84%	56%	75%

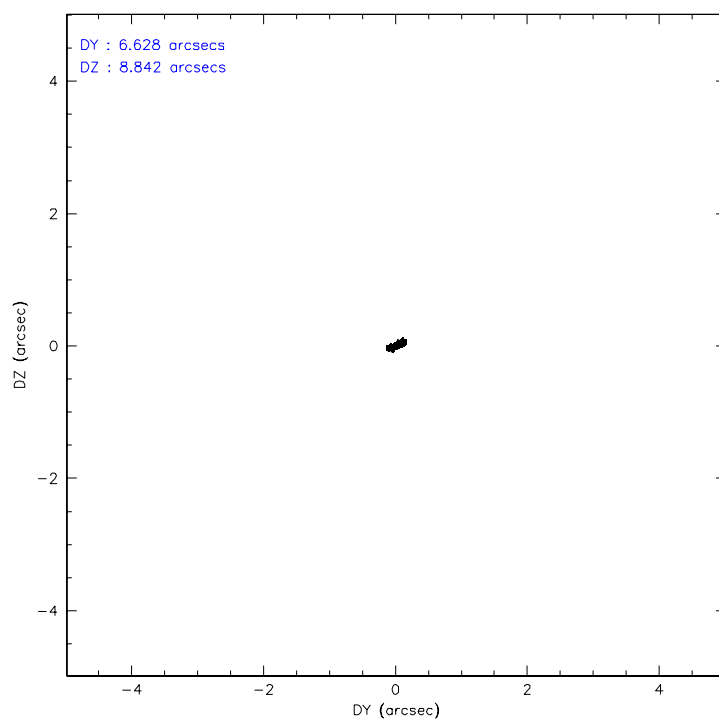
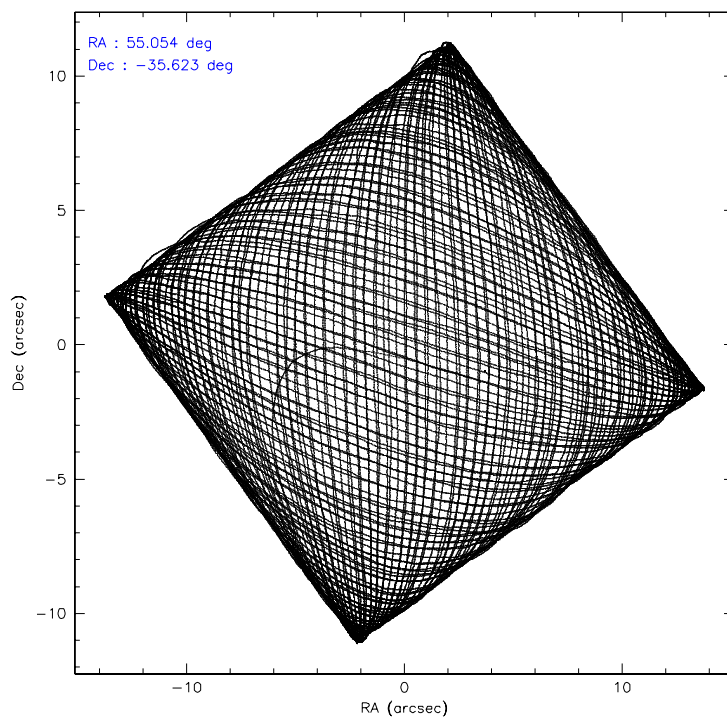
	<b>ccd 6</b>	<b>ccd 7</b>	<b>ccd 8</b>
grade 0 events	34217	22455	54135
	7%	3%	9%
grade 1 events	237	346	408
	0%	0%	0%
grade 2 events	13679	64517	27484
	3%	10%	4%
grade 3 events	5221	15141	14072
	1%	2%	2%
grade 4 events	5305	15003	13379
	1%	2%	2%
grade 5 events	18794	37270	24465
	4%	6%	4%
grade 6 events	11599	148367	30398
	2%	24%	5%
grade 7 events	345098	304763	390234
	79%	50%	70%

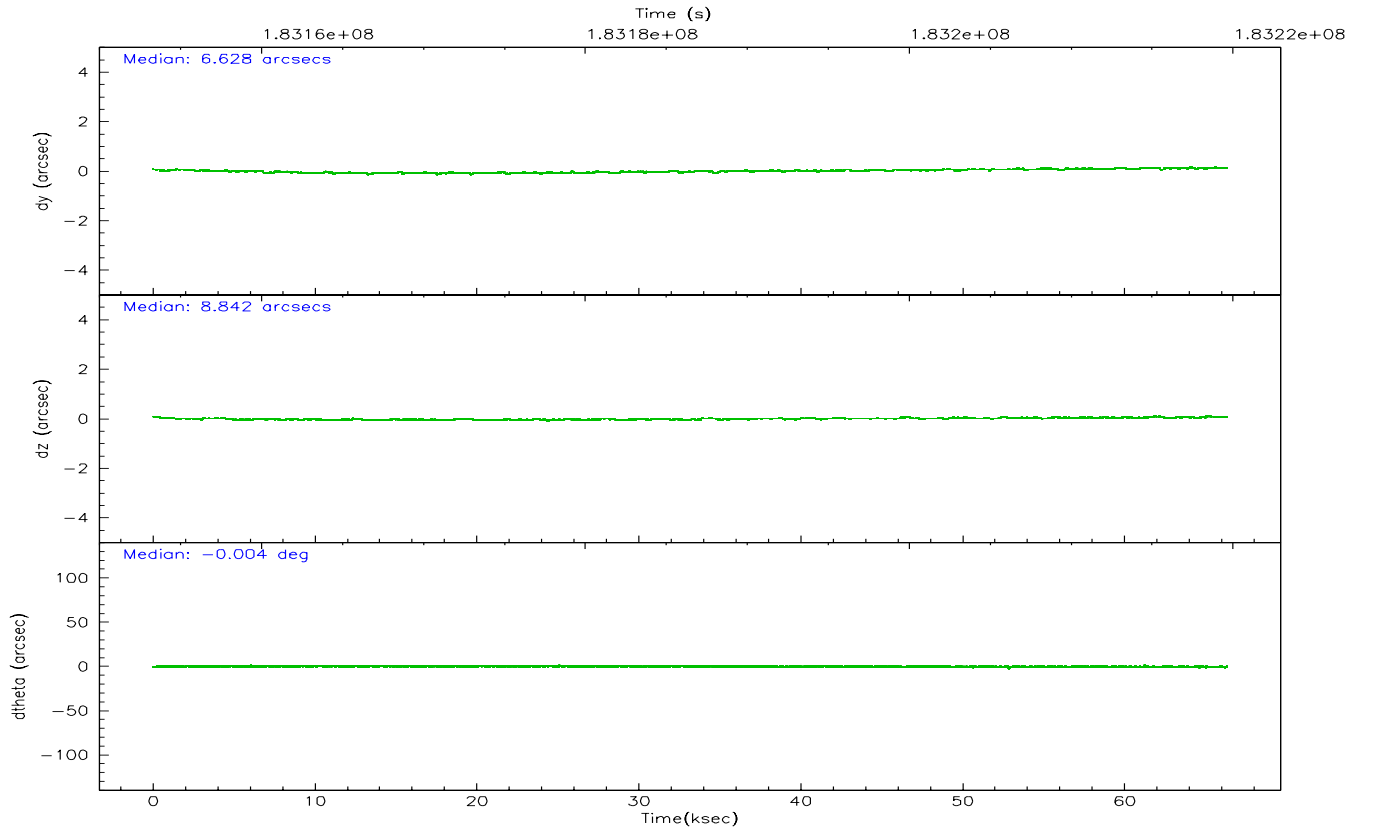
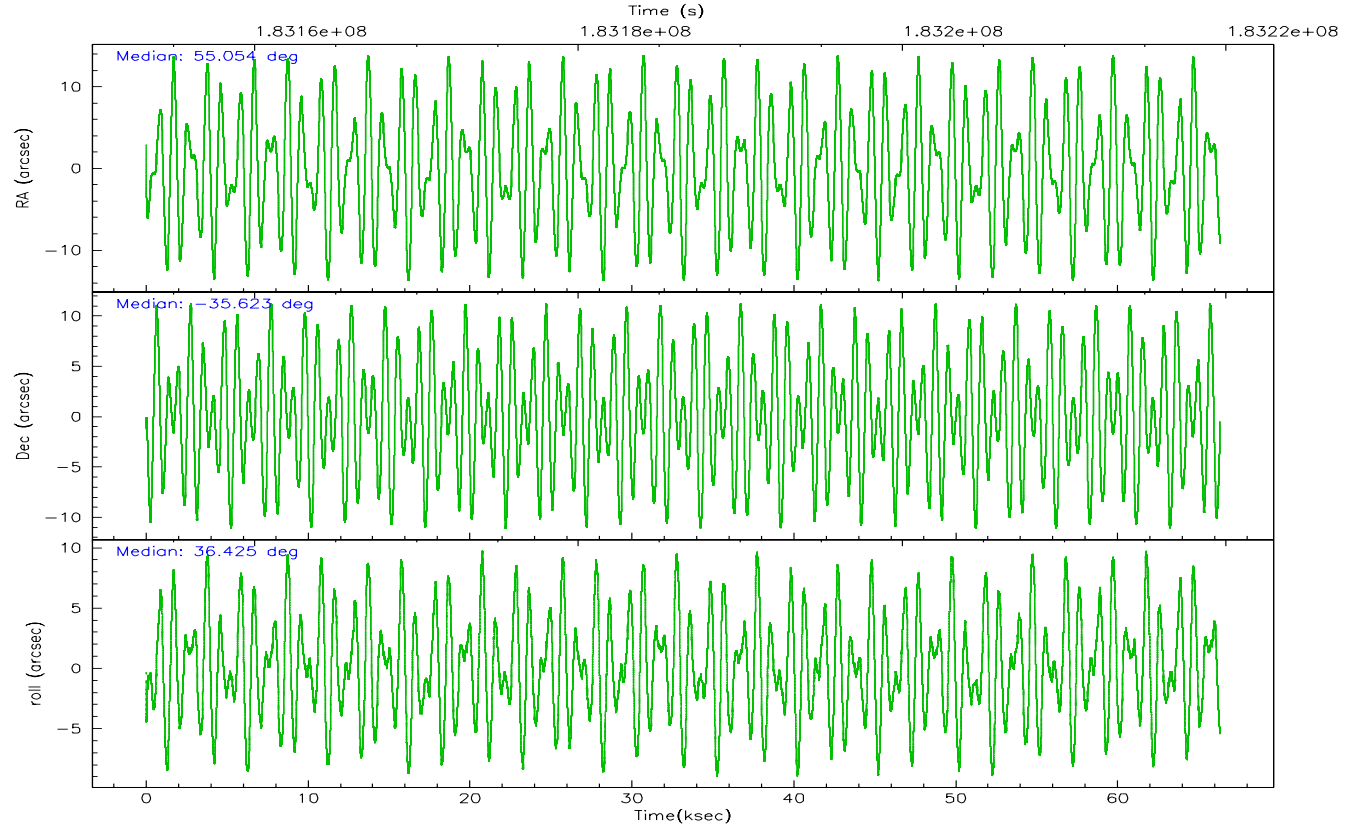


## 2.2 Compared Parameters

Parameter	Planned	Actual	Parameter	Planned	Actual
Instrument	ACIS	ACIS	Obspar format version number	6	6
Detector	ACIS-678	ACIS-678	Obspar file type	PREDICTED	ACTUAL
Grating	NONE	NONE	Obspar update status	NONE	UPDATED
Data mode	VFAINT	VFAINT	On-chip summing requested	N	N
Observation mode	POINTING	POINTING	Subarray requested	NONE	NONE
Pointing RA	55.040938	55.0538934737101	Alternating exposures requested	N	N
Pointing Dec	-35.648336	-35.62324686991355	Primary exposure time	0.000000	3.1
Pointing Roll	36.267595	36.43177532078049			
SIM focus pos (mm)	-0.684267	-0.6828225247311905			
SIM defocus (mm)	0	0.001444936568705701			
SIM translation stage pos (mm)	-190.132523	-190.1400660498719			
SIM translation stage offset (mm)	0	0.00754346686406393			
Observation start time	183153464.184000	183152263.08145			
Observation start date	2003-10-21T19:56:40	2003-10-21T19:37:43			
Observation end time	183219627.184000	183219941.27186			
Observation end date	2003-10-22T14:19:23	2003-10-22T14:25:41			
Read mode	TIMED	TIMED			

## 2.3 Aspect



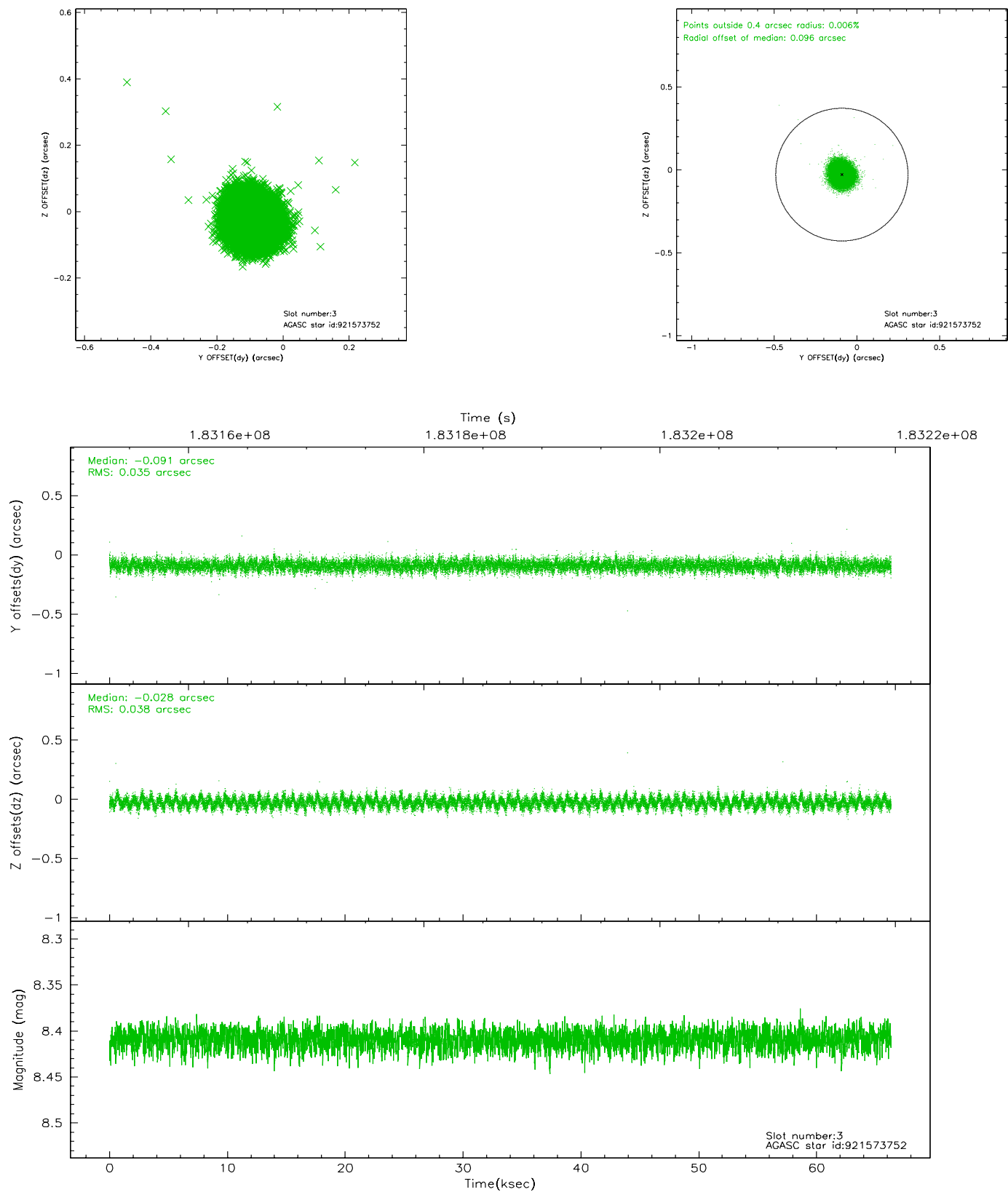


### Slot Statistics

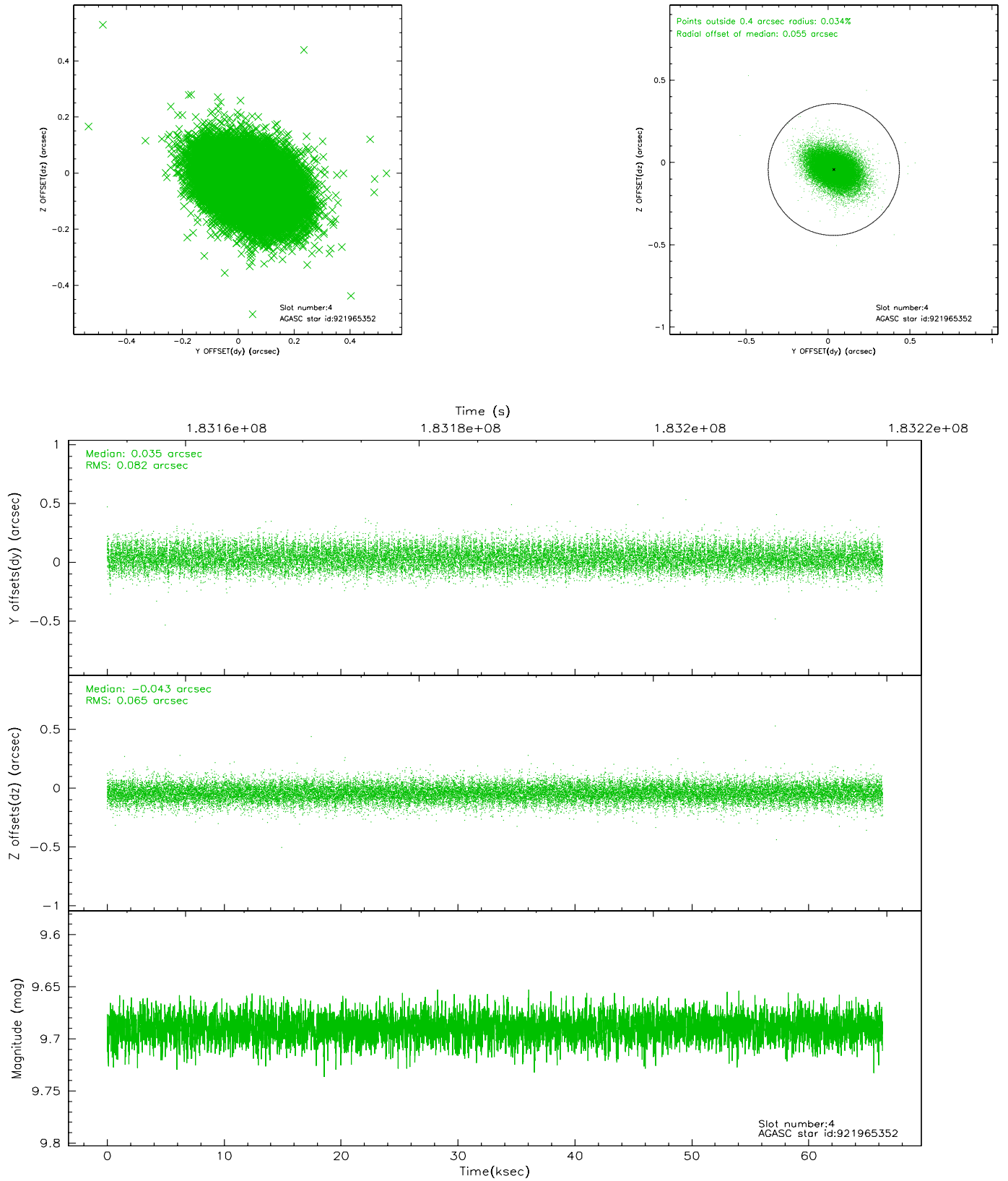
slot	status	id	mag	n_pts	med_dy	med_dz	dr1	dr2	ra	dec	mean_y	mean_z
0	FID	ACIS-S-2	7.10	16179	-0.028	-0.020	0.006	0.011	0.000000	0.000000	-759.40	-1730.08
1	FID	ACIS-S-4	7.20	16177	0.028	0.019	0.005	0.009	0.000000	0.000000	2153.95	178.49
2	FID	ACIS-S-5	7.23	16177	-0.031	0.010	0.006	0.010	0.000000	0.000000	-1812.32	172.10
3	GUIDE	921573752	8.41	32350	-0.091	-0.028	0.055	0.087	55.297577	-34.906150	2190.90	1705.54
4	GUIDE	921965352	9.69	32334	0.035	-0.043	0.110	0.184	56.101758	-35.771375	2227.03	-2203.55
5	GUIDE	921965624	8.63	32356	0.065	0.040	0.079	0.126	54.900706	-35.940077	-950.57	-605.32
6	GUIDE	921966544	7.91	32353	-0.052	-0.004	0.065	0.101	54.743508	-35.636012	-676.27	549.45
7	GUIDE	921970112	9.57	32338	0.041	0.033	0.086	0.143	54.291262	-35.695592	-1872.62	1152.59

## 2.4 Star Slots

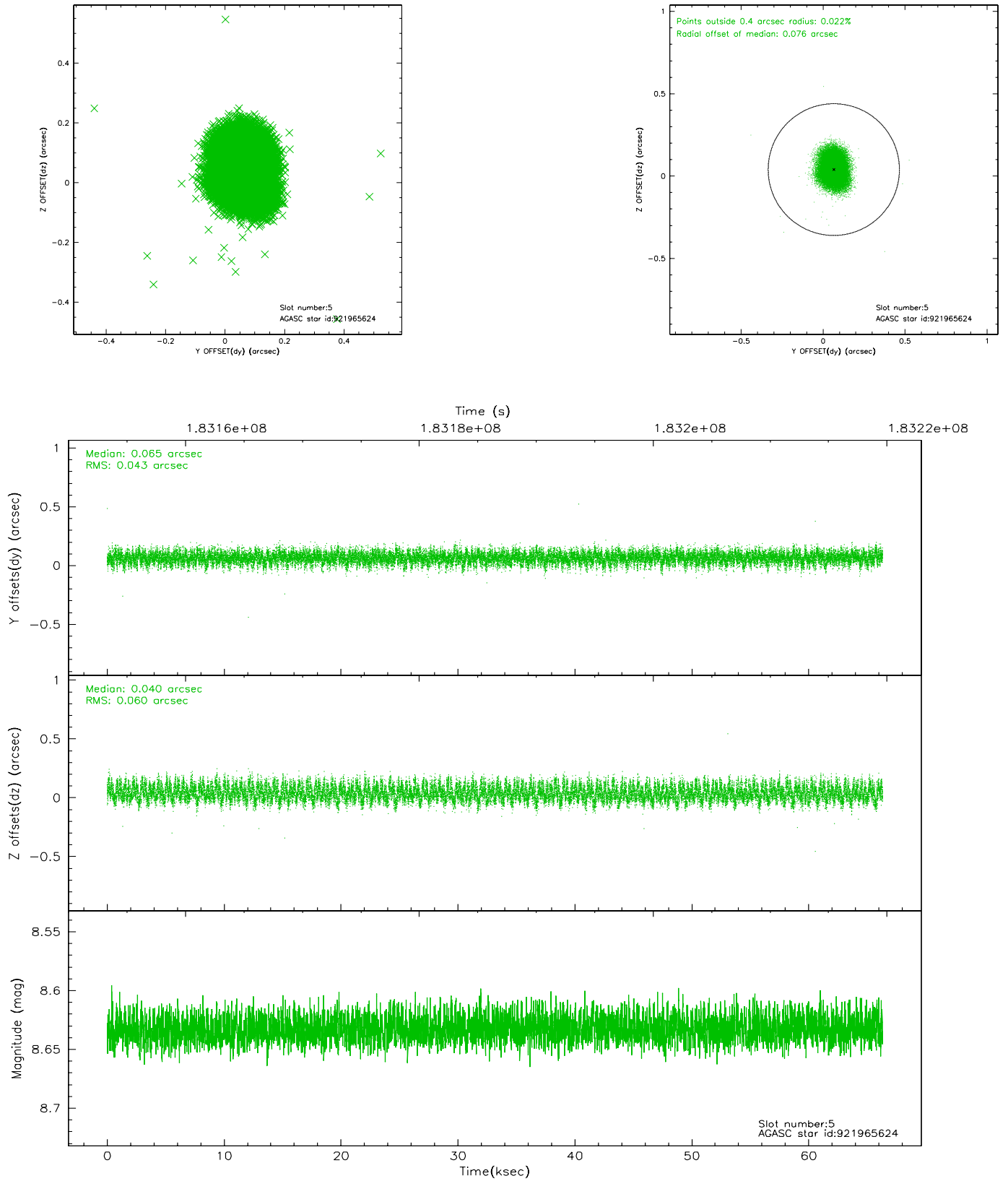
### 2.4.1 Slot 3



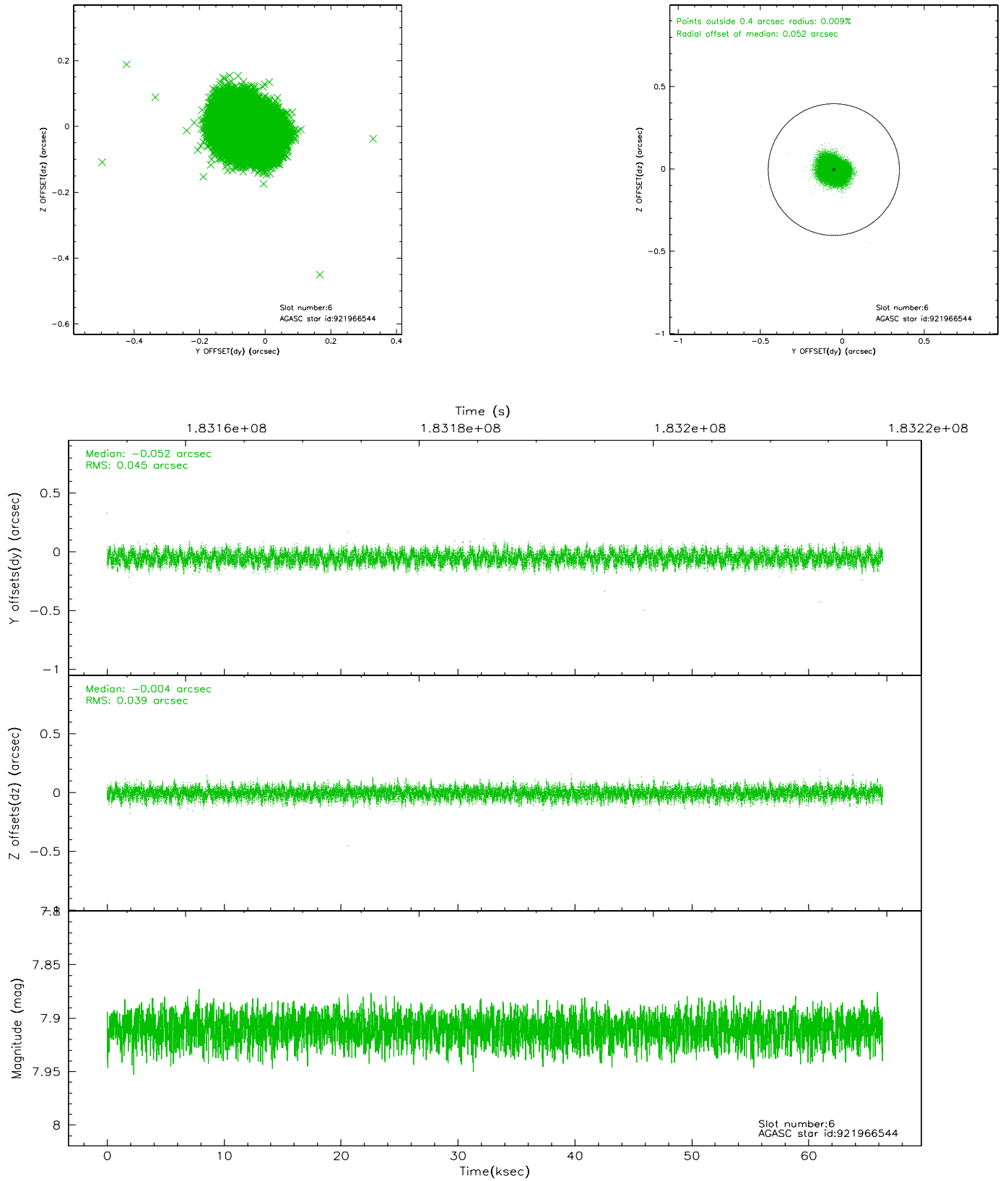
## 2.4.2 Slot 4



### 2.4.3 Slot 5

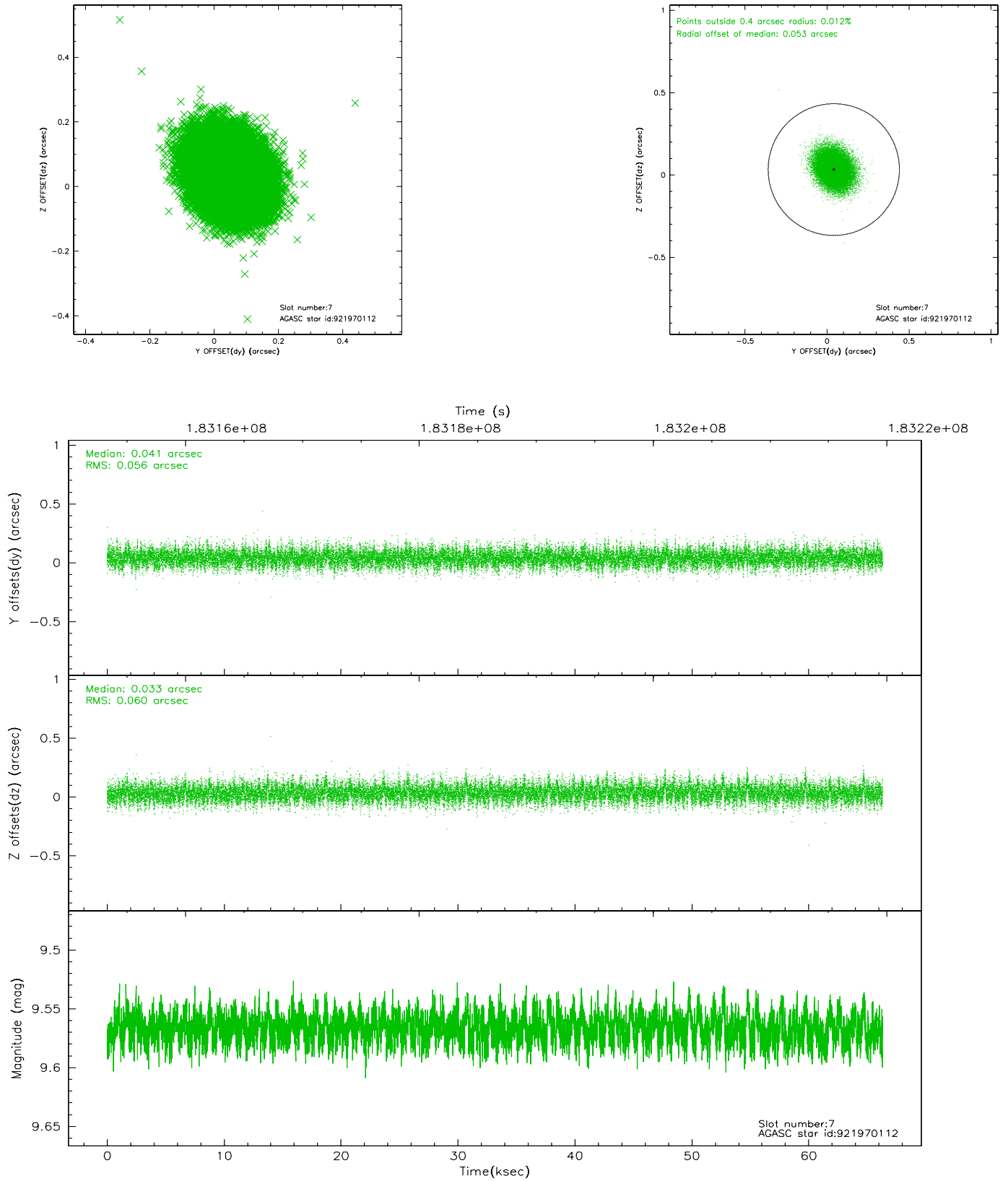


## 2.4.4 Slot 6



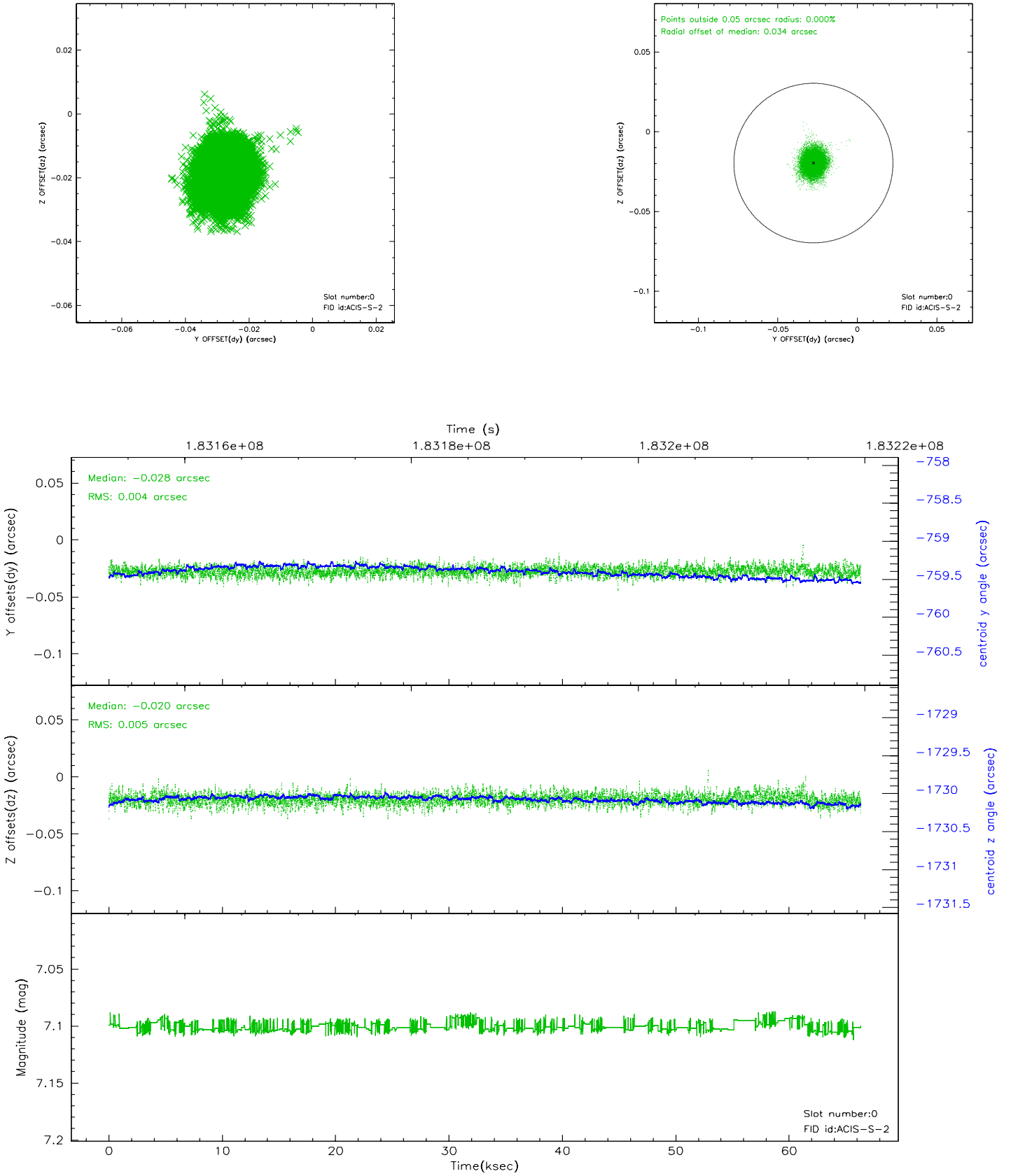


## 2.4.5 Slot 7

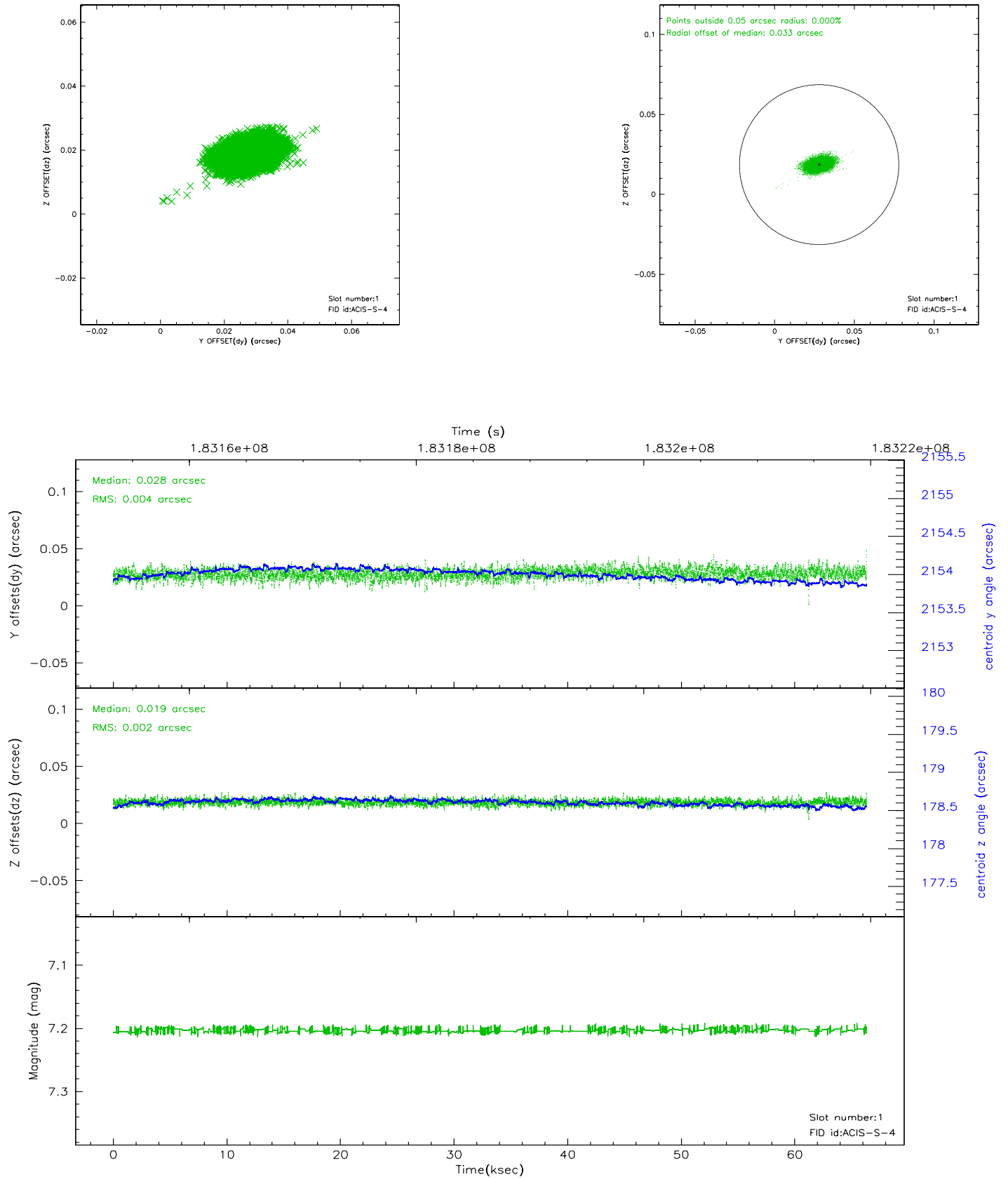


## 2.5 FID Slots

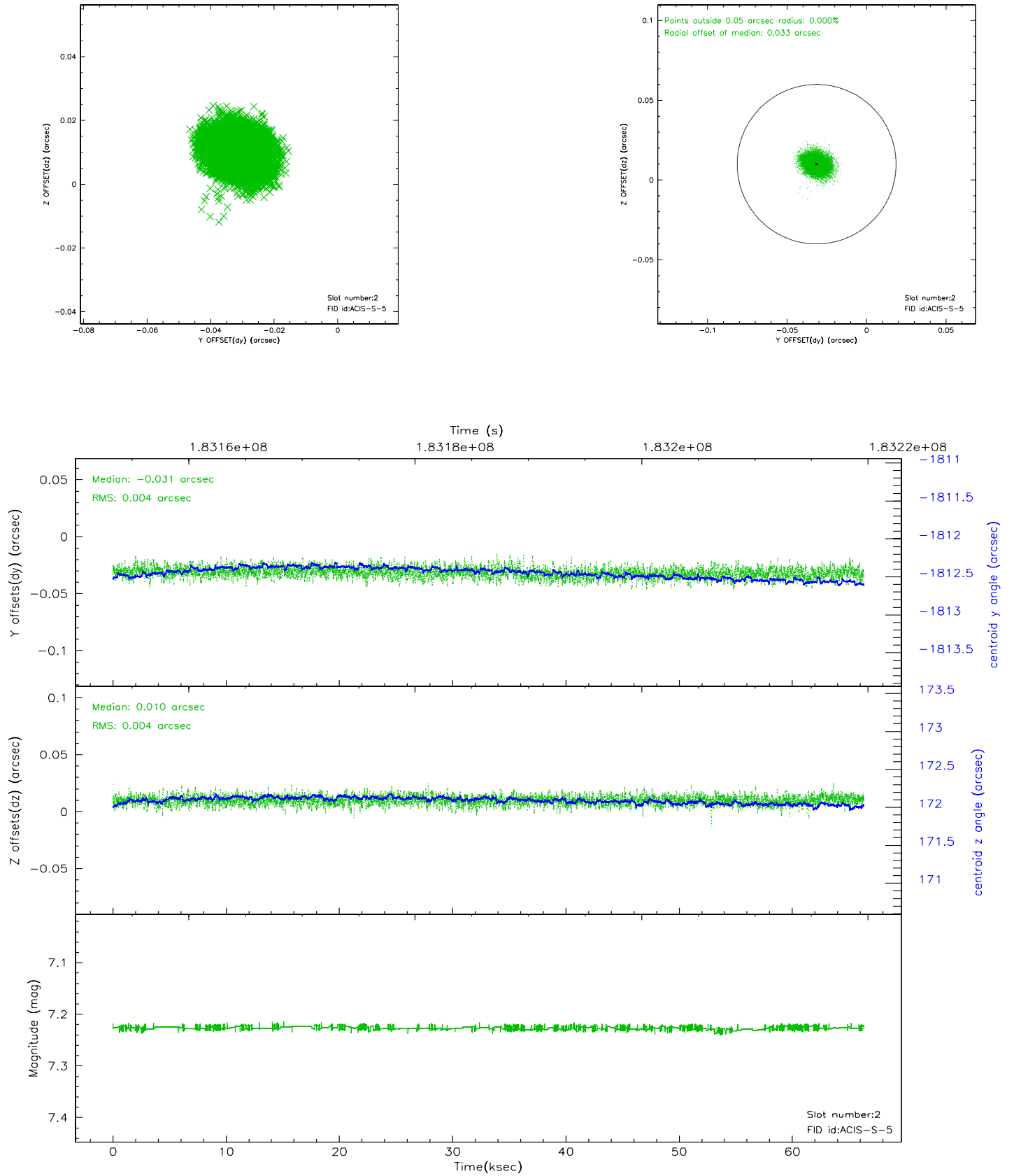
### 2.5.1 Slot 0



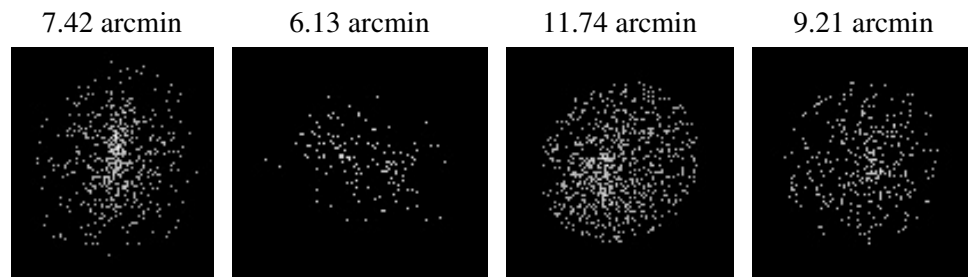
## 2.5.2 Slot 1



### 2.5.3 Slot 2



### 3 Point Sources



## A Summary

### A.1 Status

V&V Scientist	Beth Sundheim
V&V Date (YYYY-MM-DD)	2006.06.29
V&V Edition	1
V&V Disposition and Status	OK
V&V Charge Time	66.327

### A.2 Comments