

V&V Reference Report

L2 ASCDS Version : 7.6.11.10

Observation 3948 - L2 Version 5
Chandra X-Ray Center

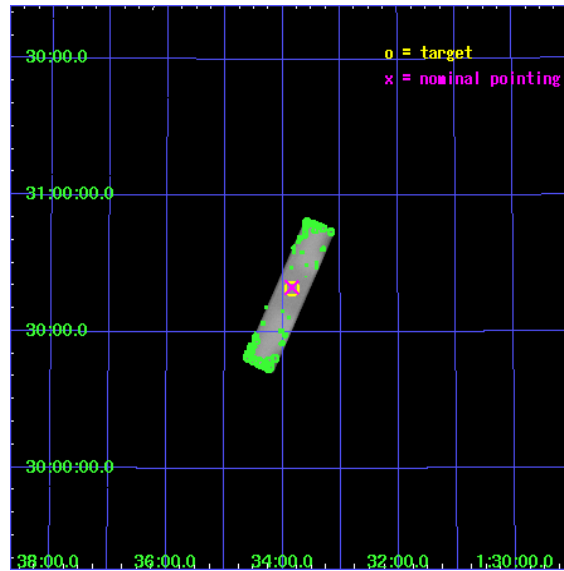
L2 Processing Date : Feb 12 2009

Contents

1	Front	2
2	OBI	3
2.1	OBI	3
2.1.1	Images	3
2.1.2	Parameters	4
2.1.3	Events	4
2.2	Compared Parameters	5
2.3	Aspect	6
2.4	Star Slots	9
2.4.1	Slot 3	9
2.4.2	Slot 4	10
2.4.3	Slot 5	11
2.4.4	Slot 6	12
2.4.5	Slot 7	13
2.5	FID Slots	14
2.5.1	Slot 0	14
2.5.2	Slot 1	15
2.5.3	Slot 2	16
3	Point Sources	17
A	Summary	18
A.1	Status	18
A.2	Comments	18

1 Front

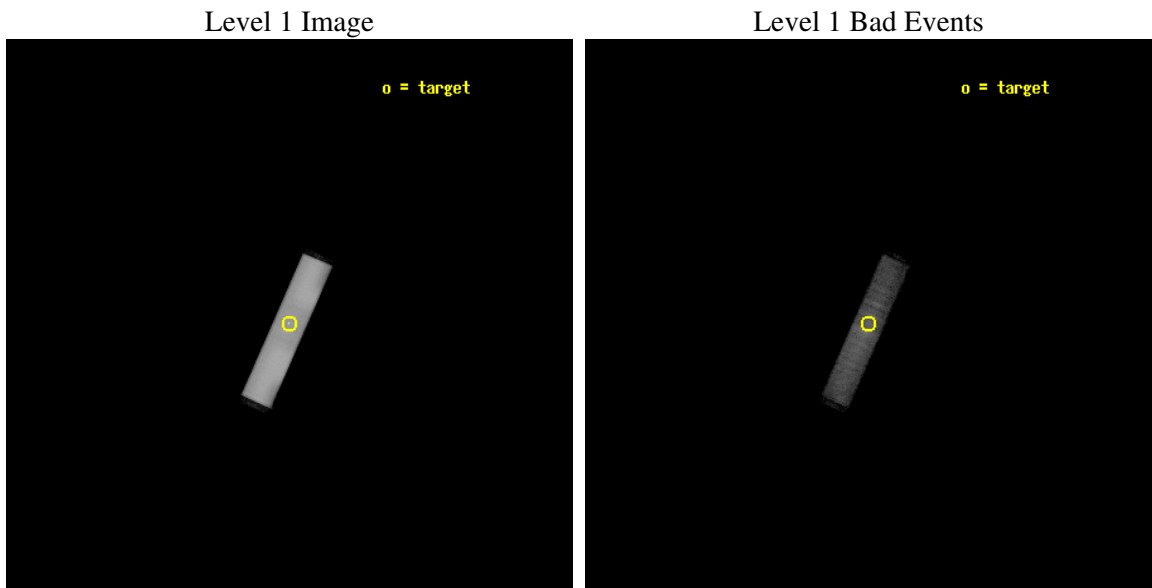
seq_num	600322
obs_id	3948
title	RESOLVING X-RAY EMISSION FROM THE NUCLEUS OF M33
observer	DR GUILLAUME DUBUS
object	M33 X-8 (NUCLEUS)
ra_targ	23.461667
dec_targ	30.660222
ra_nom	23.459610810482
dec_nom	30.664422400601
roll_nom	113.80011595392
revision	5
ontime	5258.2502242327
livetime	5182.7093748303
l2events	664820



2 OBI

2.1 OBI

2.1.1 Images



2.1.2 Parameters

obi_num	0
ascdsver	7.6.11.10
caldbver	3.5.1
date	2009-02-12T20:53:19
revision	5

sched_exp_time	5106.520000
ontime	5258.2502242327
l1events	758008

2.1.3 Events

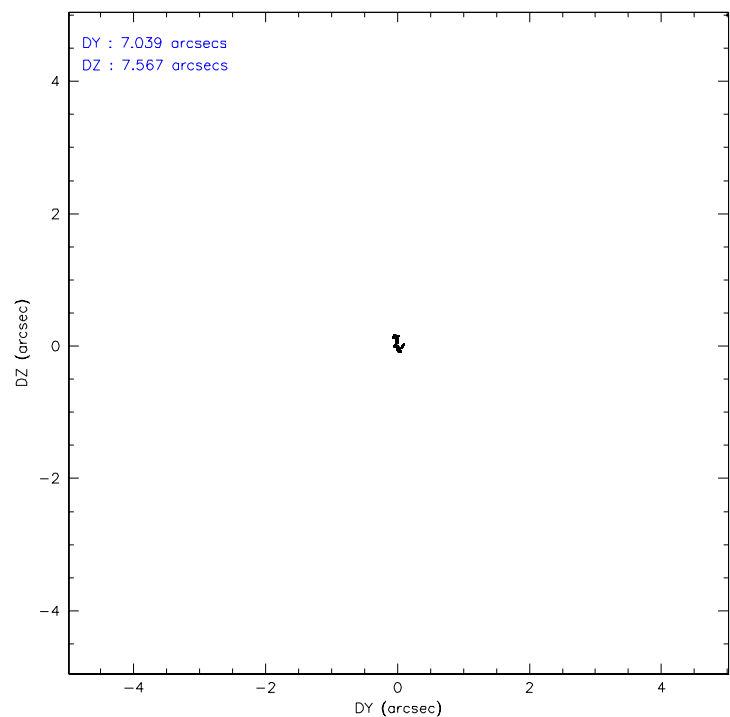
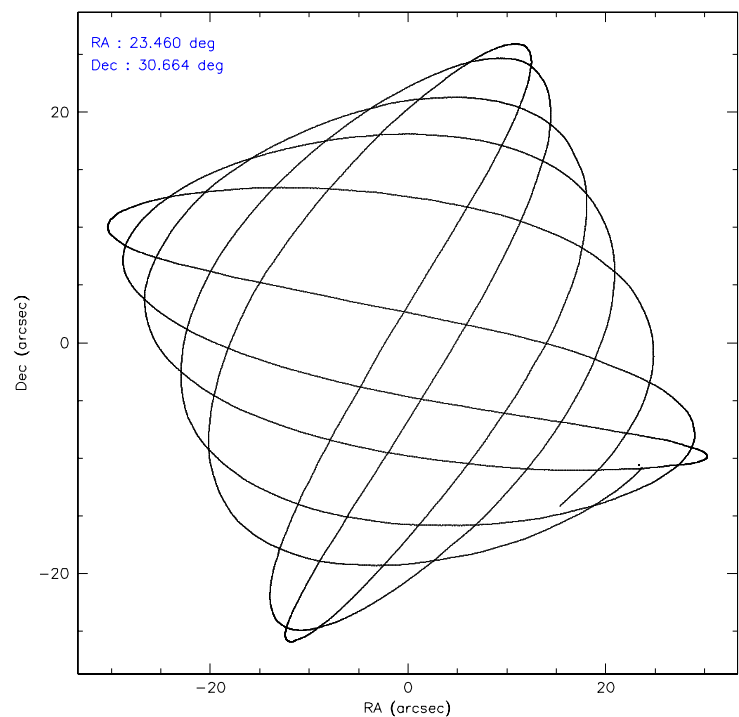
Level 1 Events

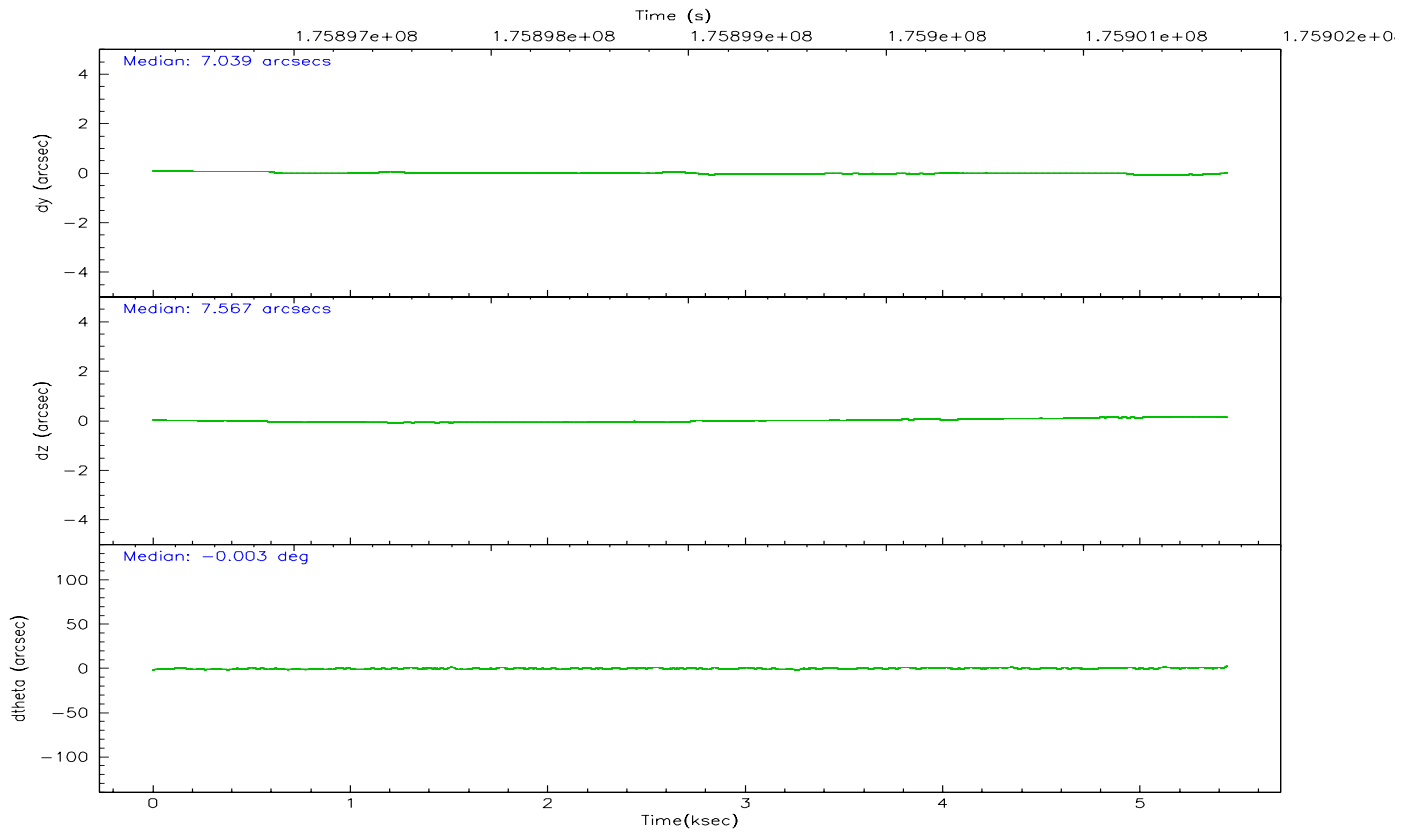
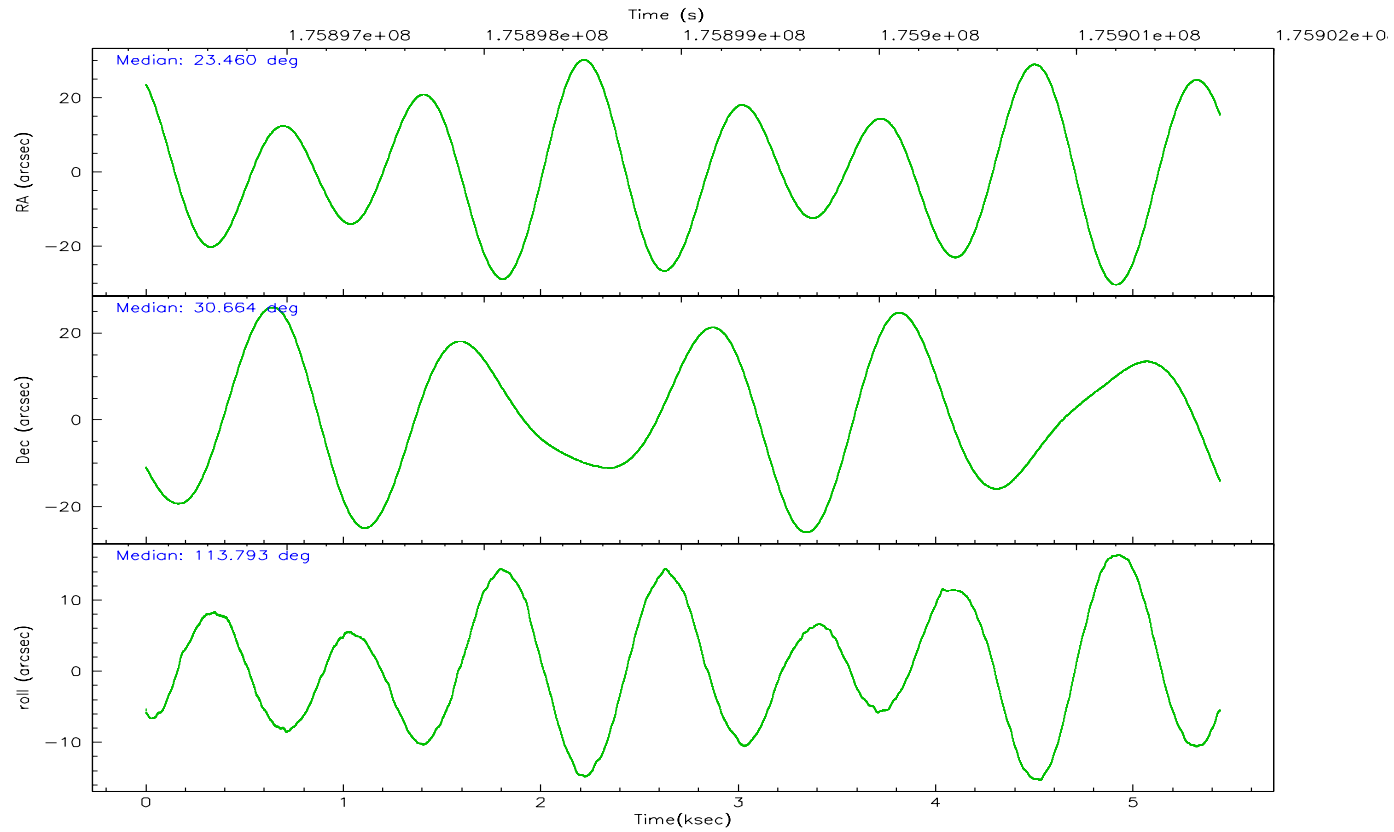
	segment 1	segment 2	segment 3
level 1 events	253	757755	0
rejected events	238	75302	0
rejected %	94%	9%	0%

2.2 Compared Parameters

Parameter	Planned	Actual	Parameter	Planned	Actual
Instrument	HRC	HRC	Obspar format version number	6	6
Detector	HRC-S	HRC-S	Obspar file type	PREDICTED	ACTUAL
Grating	NONE	NONE	Obspar update status	OVERRIDE	OVERRIDE
Data mode	OBSERVING	OBSERVING			
Observation mode	POINTING	POINTING			
Pointing RA	23.45961081048207	23.45961081048207			
Pointing Dec	30.66442240060064	30.66442240060064			
Pointing Roll	113.8001159539196	113.8001159539196			
SIM focus pos (mm)	-1.5235407335	-1.5235407335			
SIM defocus (mm)	0.009795829655743438	0.009795829655743438			
SIM translation stage pos (mm)	250.4635187649	250.4635187649			
SIM translation stage offset (mm)	-0.007542945905271381	-0.007542945905271381			
Observation start time	175896288.184	175896288.184			
Observation start date	2003-07-29T20:03:44	2003-07-29T20:04:48			
Observation end time	175901730.184	175901730.184			
Observation end date	2003-07-29T21:28:51	2003-07-29T21:35:30			

2.3 Aspect



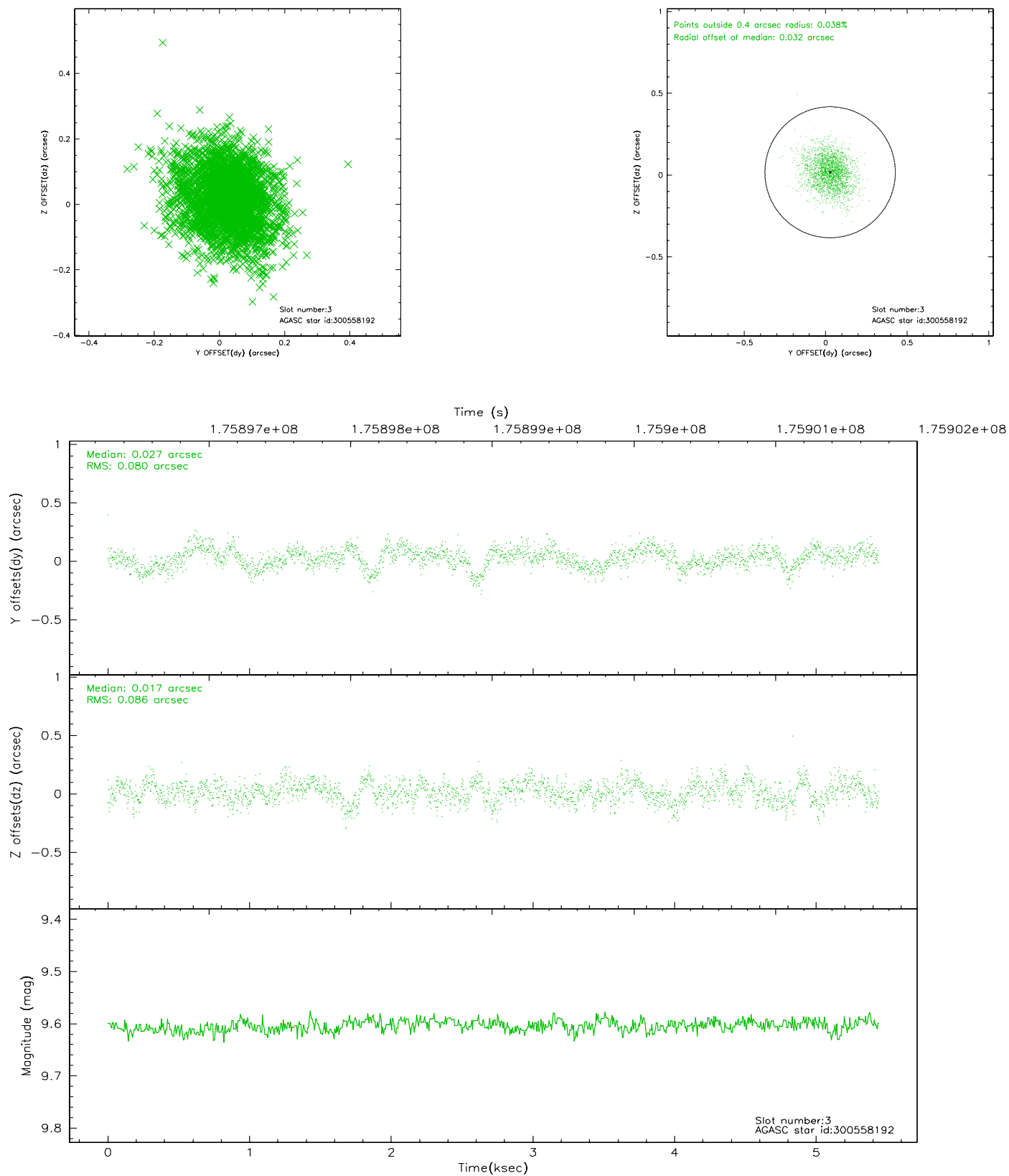


Slot Statistics

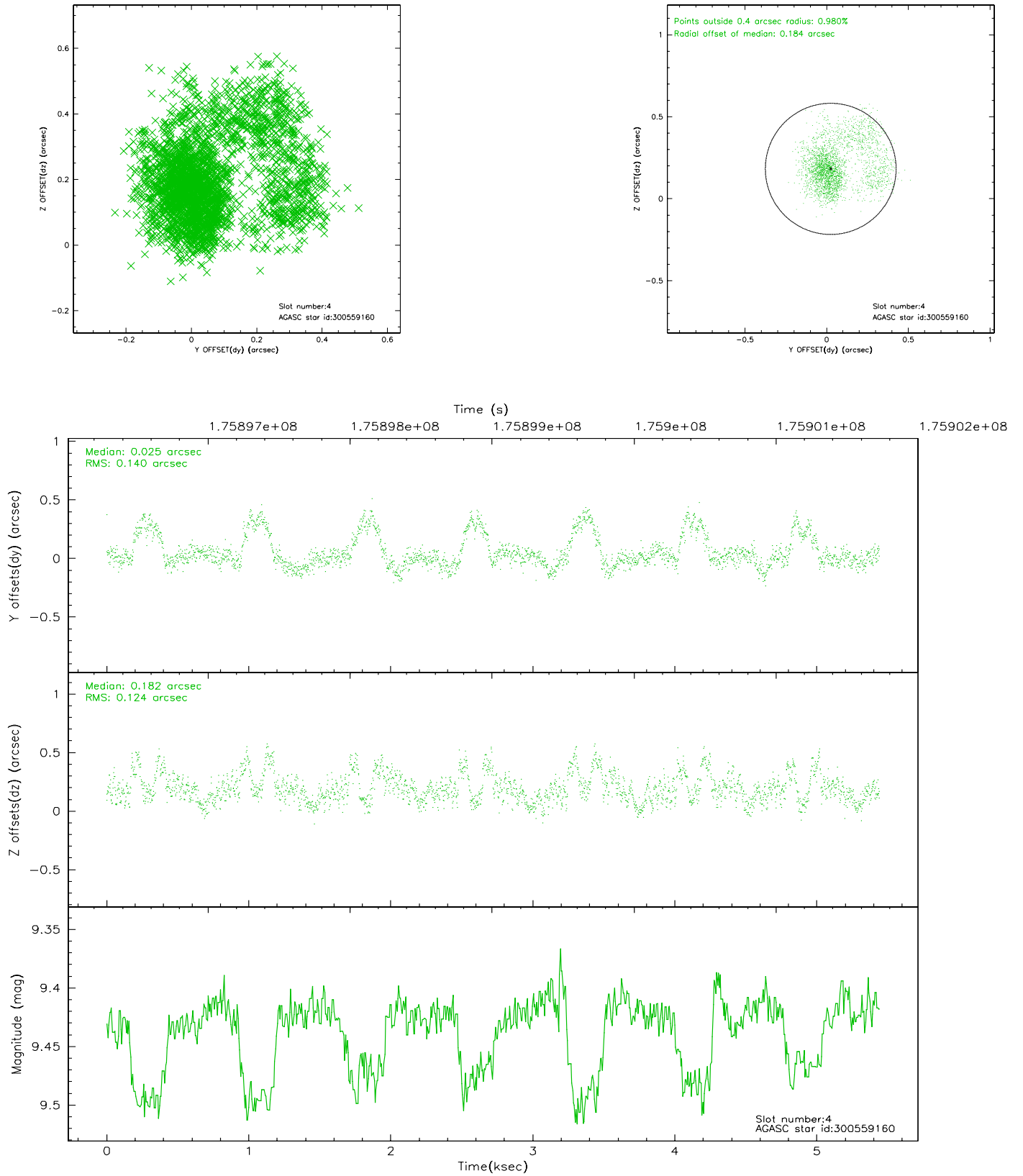
slot	status	id	mag	n_pts	med_dy	med_dz	dr1	dr2	ra	dec	mean_y	mean_z
0	FID	HRC-S-1	6.98	1327	0.109	-0.103	0.007	0.011	0.000000	0.000000	-1161.21	-456.08
1	FID	HRC-S-2	6.98	1327	0.166	-0.107	0.005	0.009	0.000000	0.000000	1237.63	-449.07
2	FID	HRC-S-3	6.99	1327	0.115	-0.093	0.007	0.011	0.000000	0.000000	-1162.99	573.11
3	GUIDE	300558192	9.60	2654	0.027	0.017	0.124	0.203	23.821763	30.670988	-341.79	-980.32
4	GUIDE	300559160	9.43	2654	0.025	0.182	0.195	0.352	24.161026	30.632205	-888.05	-1888.78
5	GUIDE	300559960	7.87	2655	-0.193	-0.235	0.078	0.124	22.944463	30.624765	600.23	1572.38
6	GUIDE	230039080	8.67	2655	0.159	-0.061	0.102	0.156	23.320866	29.887774	-2298.62	1578.45
7	GUIDE	300551848	9.96	2632	-0.048	0.083	0.133	0.231	23.662495	30.844317	426.40	-777.66

2.4 Star Slots

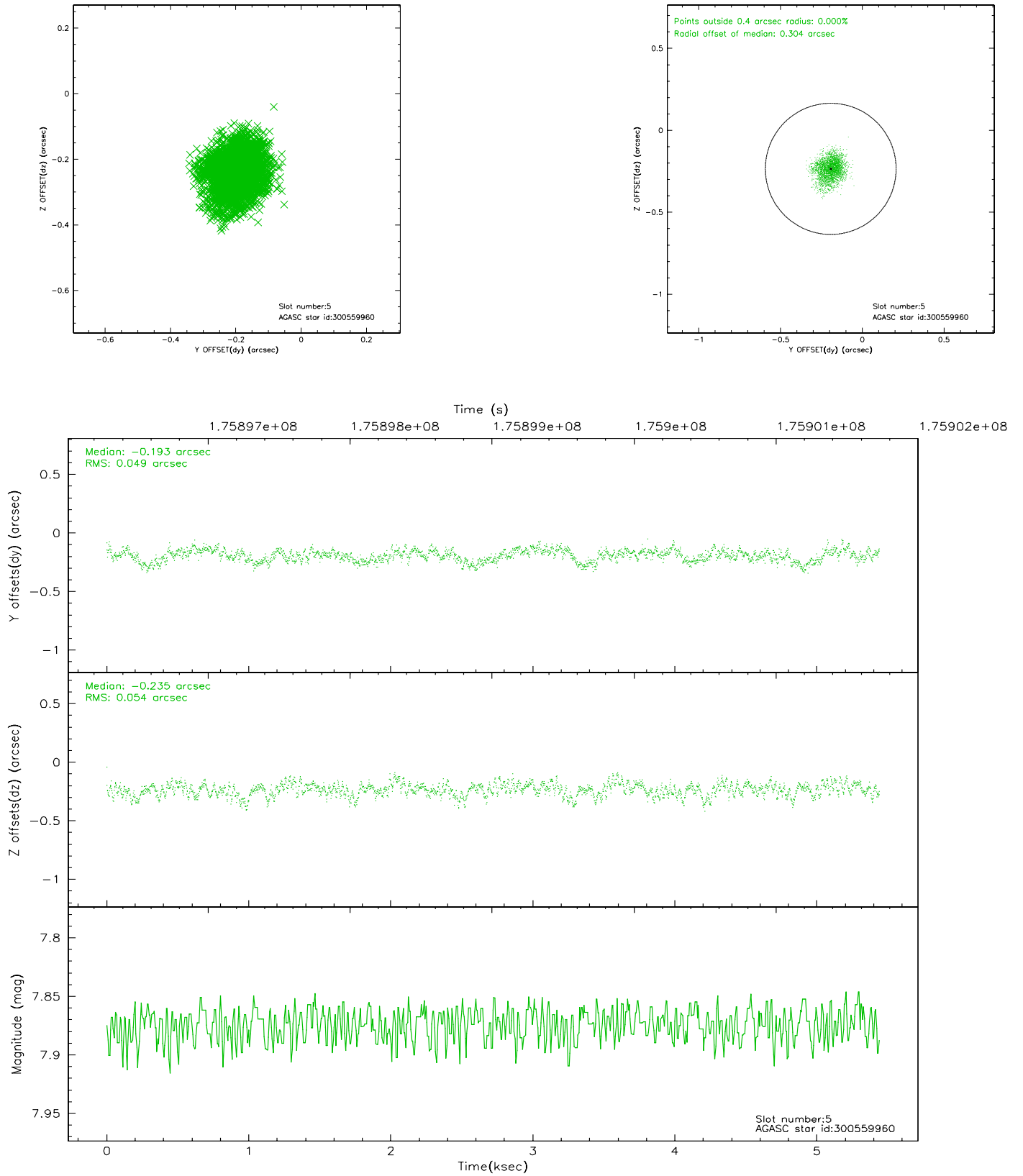
2.4.1 Slot 3



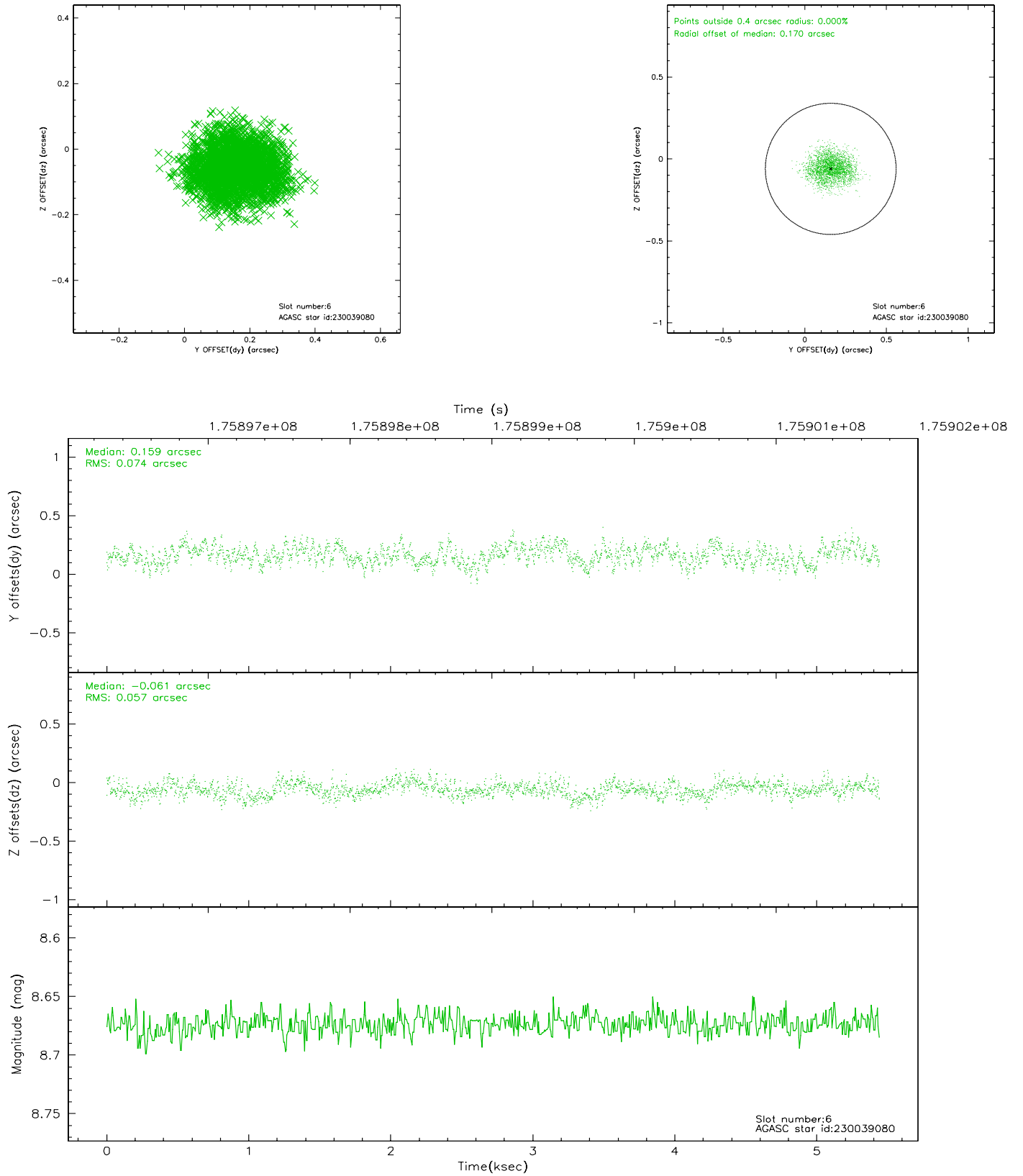
2.4.2 Slot 4



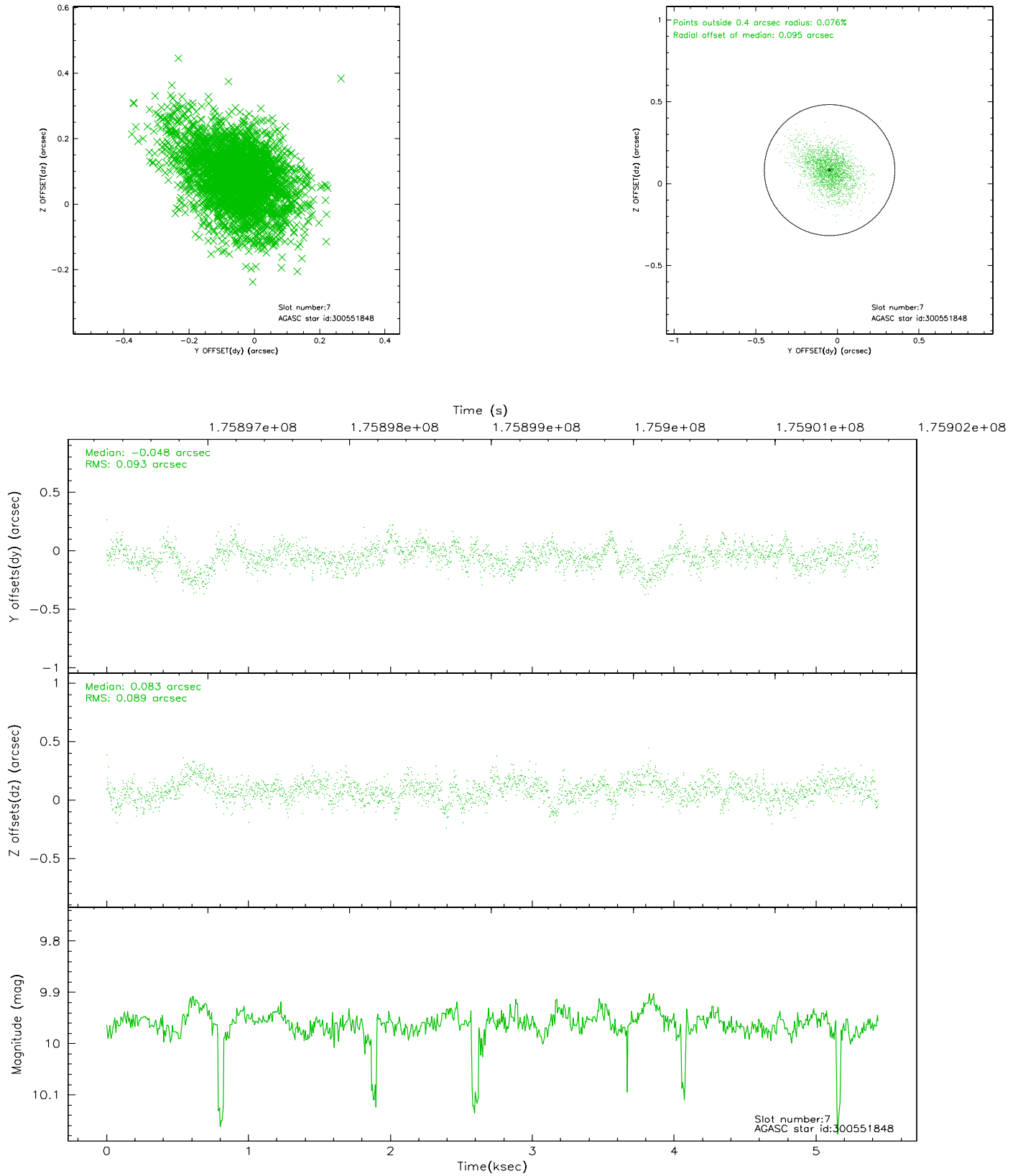
2.4.3 Slot 5



2.4.4 Slot 6

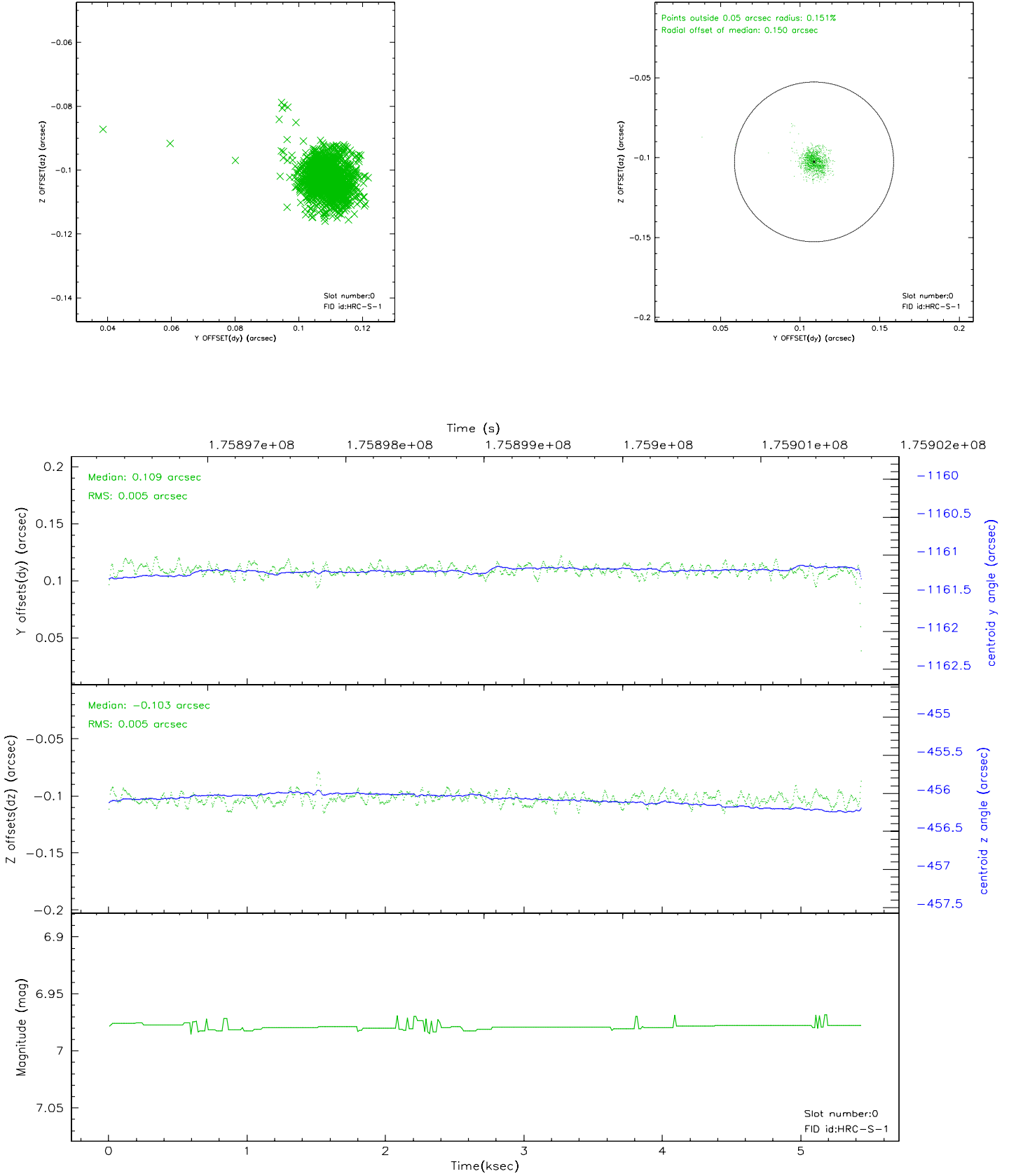


2.4.5 Slot 7

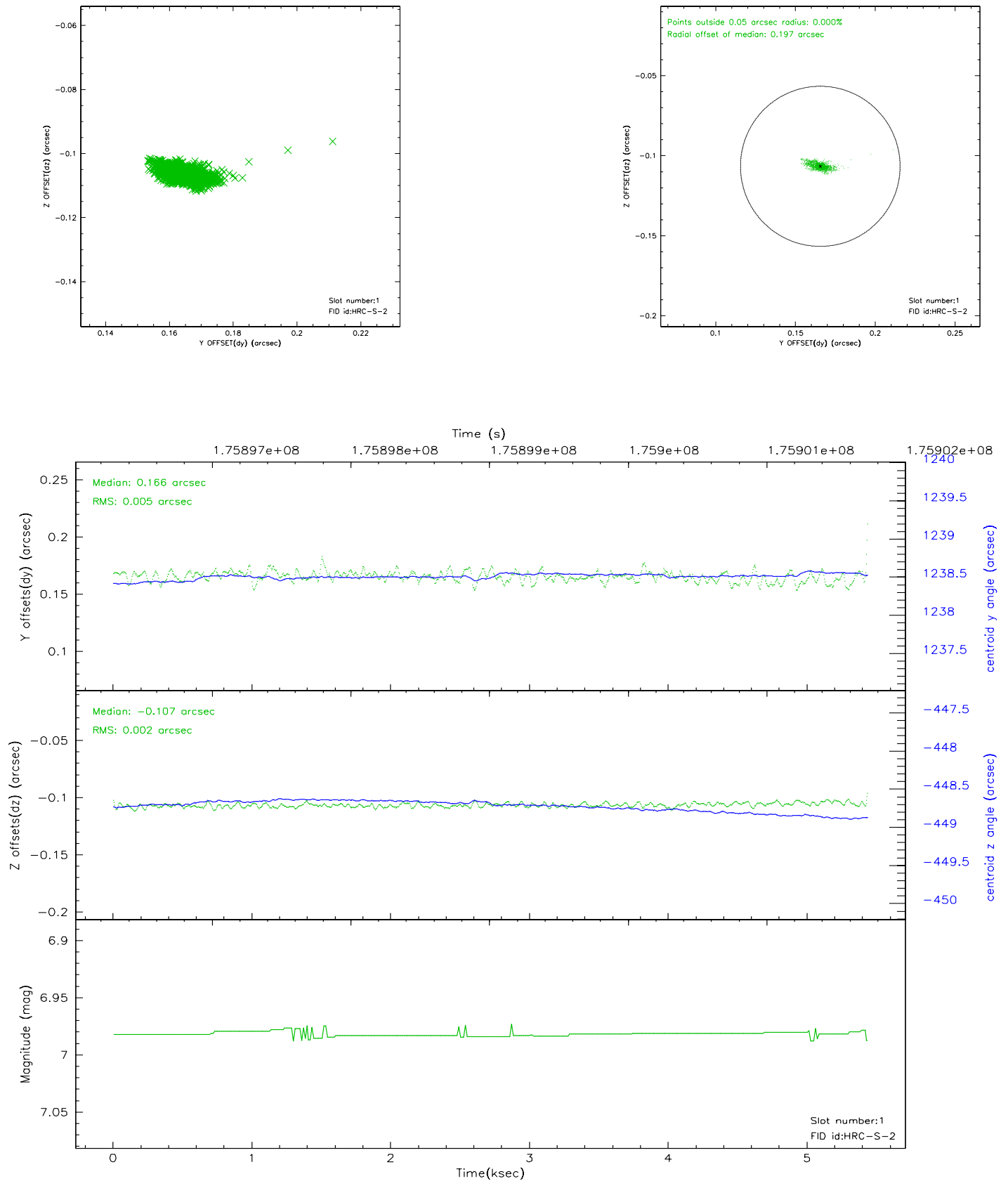


2.5 FID Slots

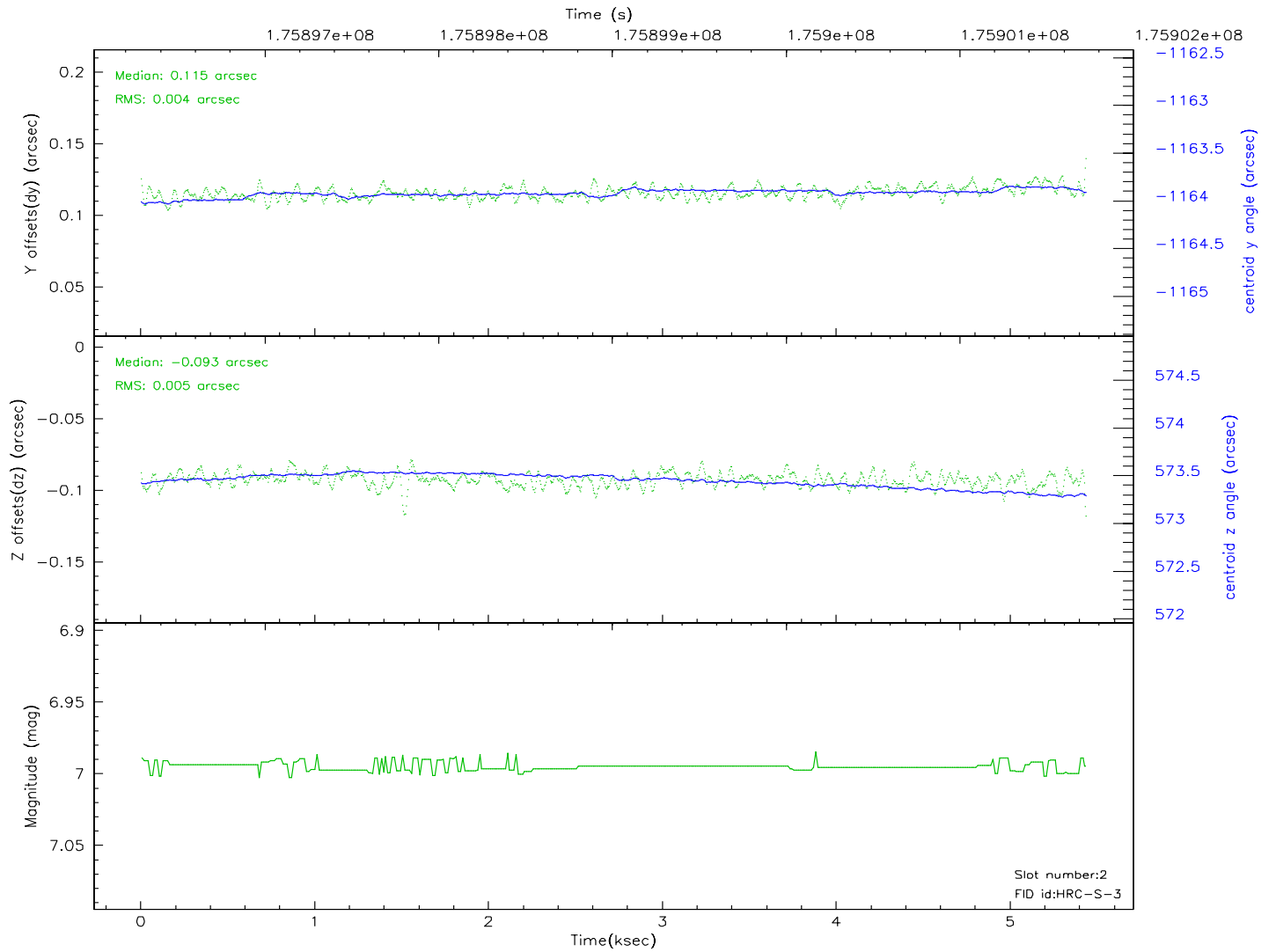
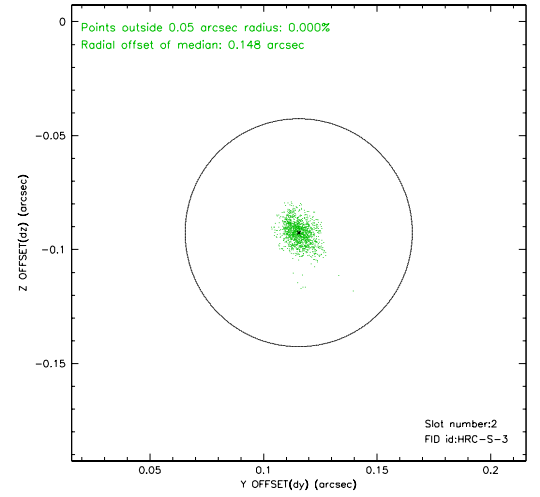
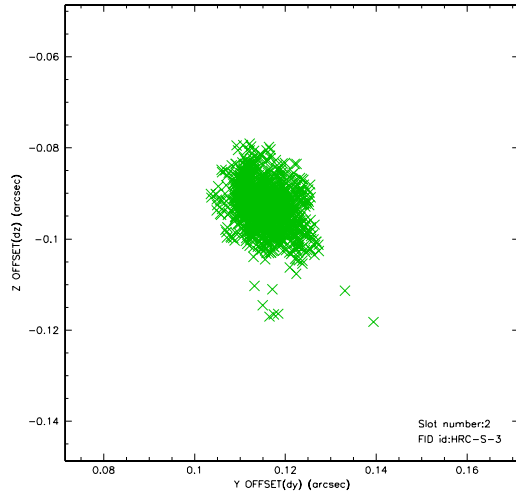
2.5.1 Slot 0



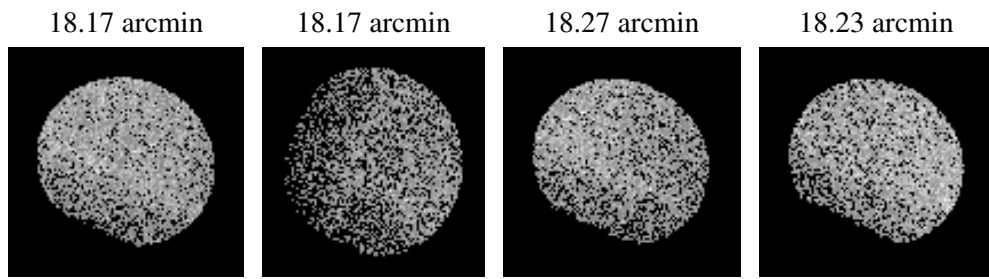
2.5.2 Slot 1



2.5.3 Slot 2



3 Point Sources



A Summary

A.1 Status

V&V Scientist	Joy Nichols
V&V Date (YYYY-MM-DD)	2009.02.27
V&V Edition	1
V&V Disposition and Status	OK
V&V Charge Time	5.354

A.2 Comments

First 2.5 ksec of this observation was taken in a high radiation environment.

During this period the counts are overestimated and the DTF of the instrument

is low. Data taken during this period is probably suspect.

=====

Charge time for this ObsId remains at original value of 5.354 ks, although

with the current processing the charge time would have been 5.258 ksec.

=====

This obsid was reprocessed to correct minor errors in parameters used in

processing. Some of these parameters cannot be determined automatically

for this observation and must be derived.

=====

Override of stop time used to coincide with the actual end of the observation and the valid fid light data.=====