

V&V Reference Report

L2 ASCDS Version : 7.6.8

Observation 3947 - L2 Version 001
Chandra X-Ray Center

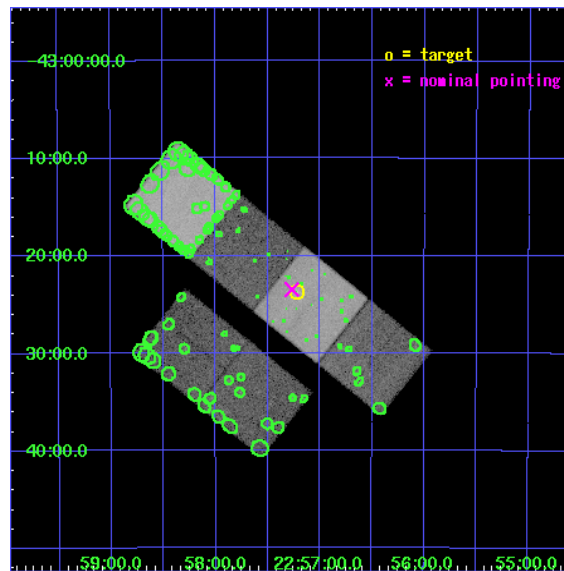
L2 Processing Date : Jul 11 2006

Contents

1	Front	2
2	OBI	3
2.1	OBI	3
2.1.1	Images	3
2.1.2	Bias	3
2.1.3	Parameters	4
2.1.4	Events	4
2.2	Compared Parameters	5
2.3	Aspect	6
2.4	Star Slots	9
2.4.1	Slot 3	9
2.4.2	Slot 4	10
2.4.3	Slot 5	11
2.4.4	Slot 6	12
2.4.5	Slot 7	13
2.5	FID Slots	14
2.5.1	Slot 0	14
2.5.2	Slot 1	15
2.5.3	Slot 2	16
3	Point Sources	17
A	Summary	18
A.1	Status	18
A.2	Comments	18

1 Front

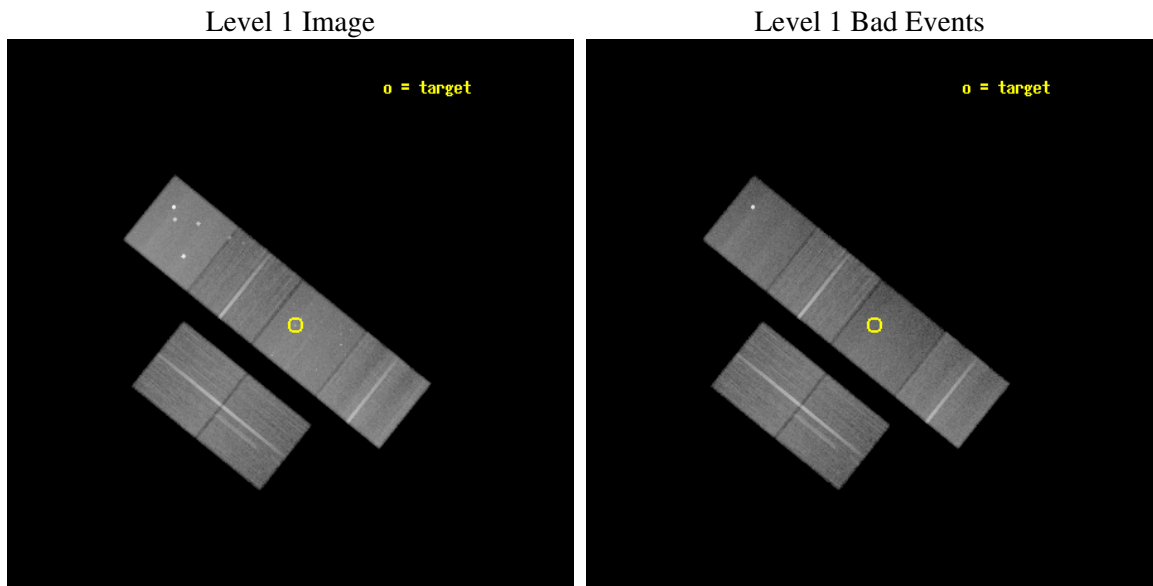
seq_num	600321
obs_id	3947
title	THE INTERACTION OF HOT AND COLD GAS IN GALAXIES
observer	Dr. Jimmy Irwin
object	IC5267
dtcycle	0
cycle	P
ra_targ	344.305417
dec_targ	-43.395833
ra_nom	344.31705668465
dec_nom	-43.391191334971
roll_nom	38.824131838537
revision	2
ontime	55673.5997926
livetime	54968.627149409
ontime2	55667.117861956
ontime3	55670.358822316
ontime5	55670.358812332
ontime6	55667.117832065
ontime7	55673.5997926
ontime8	55663.876841873
l2events	416364



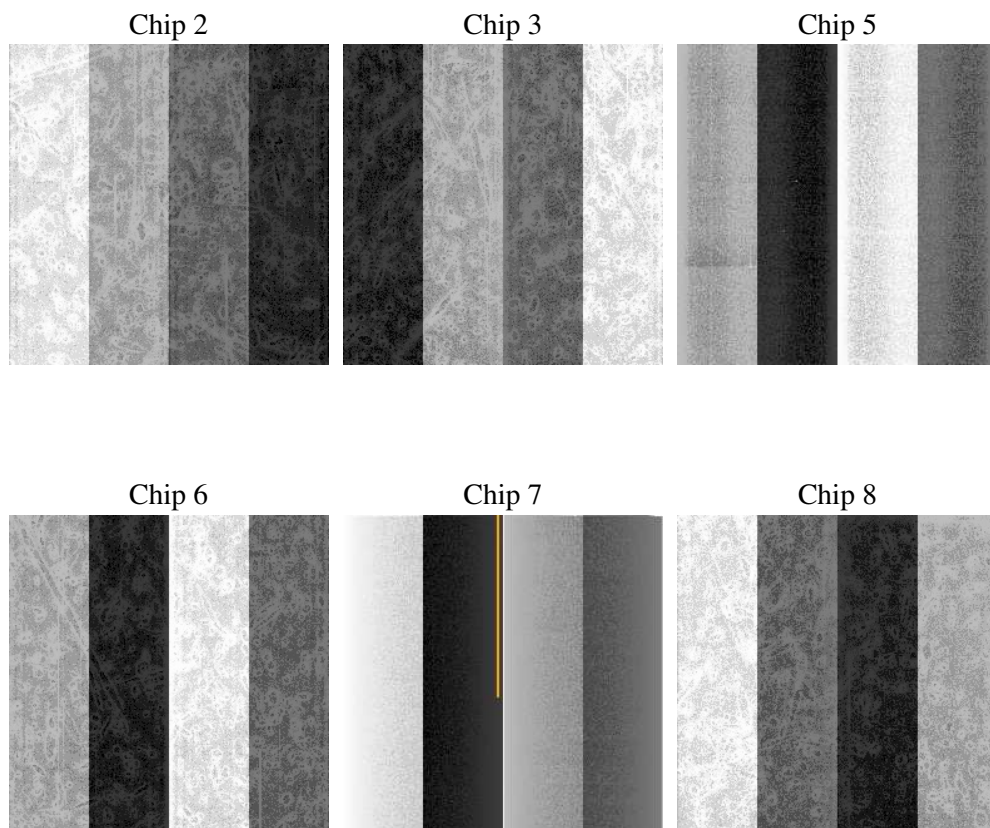
2 OBI

2.1 OBI

2.1.1 Images



2.1.2 Bias



2.1.3 Parameters

obi_num	0
ascdsver	7.6.8
caldsver	3.2.2
date	2006-07-11T07:35:38
revision	2

sched_exp_time	55500.000000
ontime	57203.814255714
ontime2	57197.332305133
ontime3	57200.573265493
ontime5	57200.573275447
ontime6	57197.332295179
ontime7	57203.814255714
ontime8	57194.09128505
l1events	2045789

2.1.4 Events

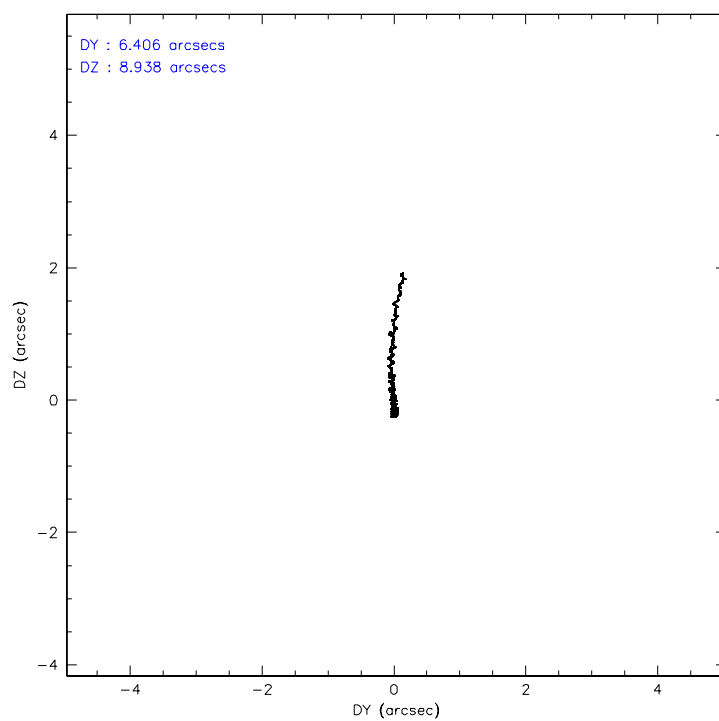
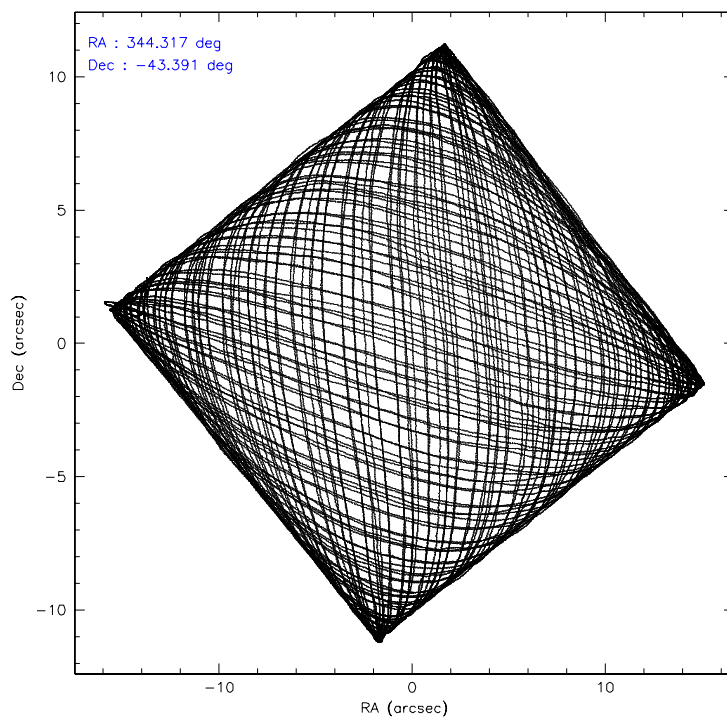
	ccd 2	ccd 3	ccd 5	ccd 6	ccd 7	ccd 8
level 1 events	321051	288049	423245	301570	335672	376202
rejected events	293194	261135	222097	271303	194267	295464
rejected %	91%	90%	52%	89%	57%	78%

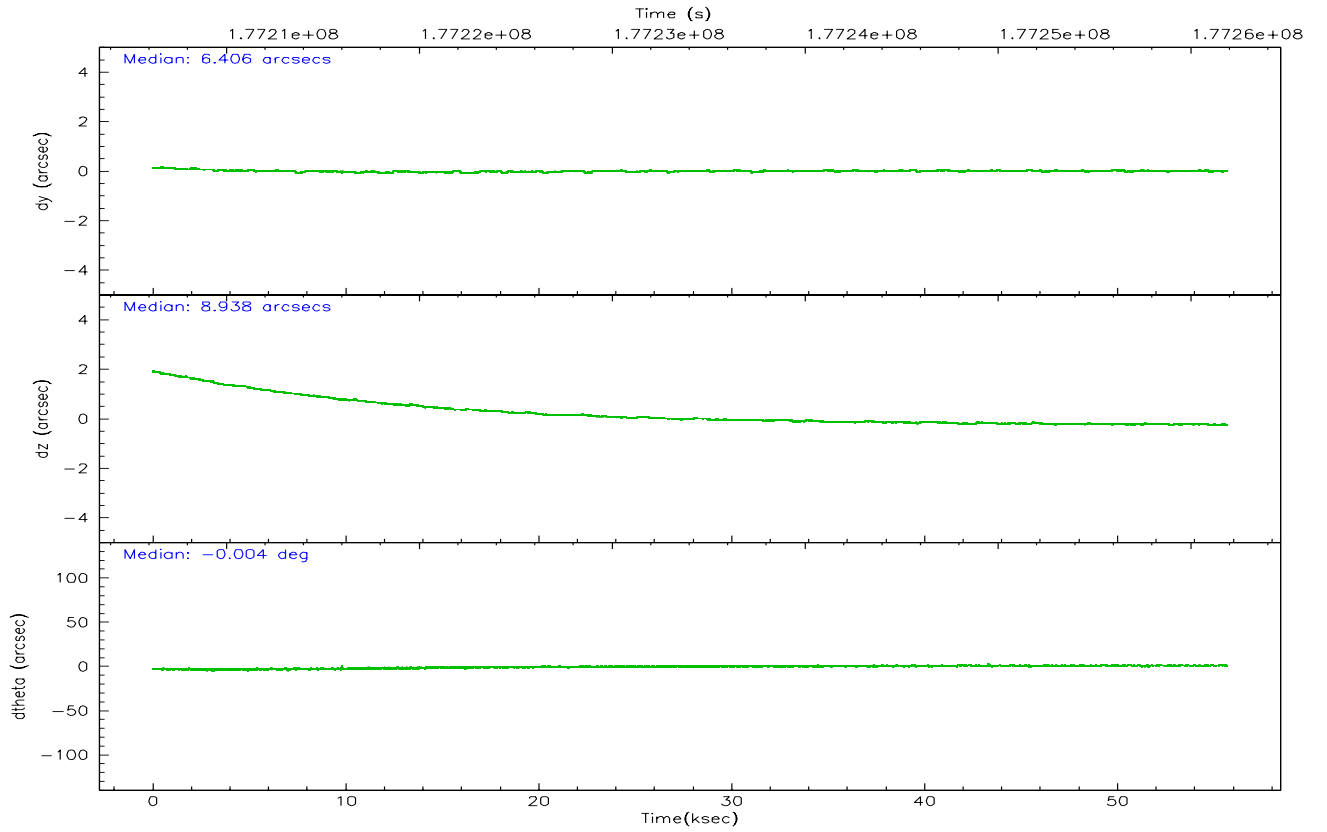
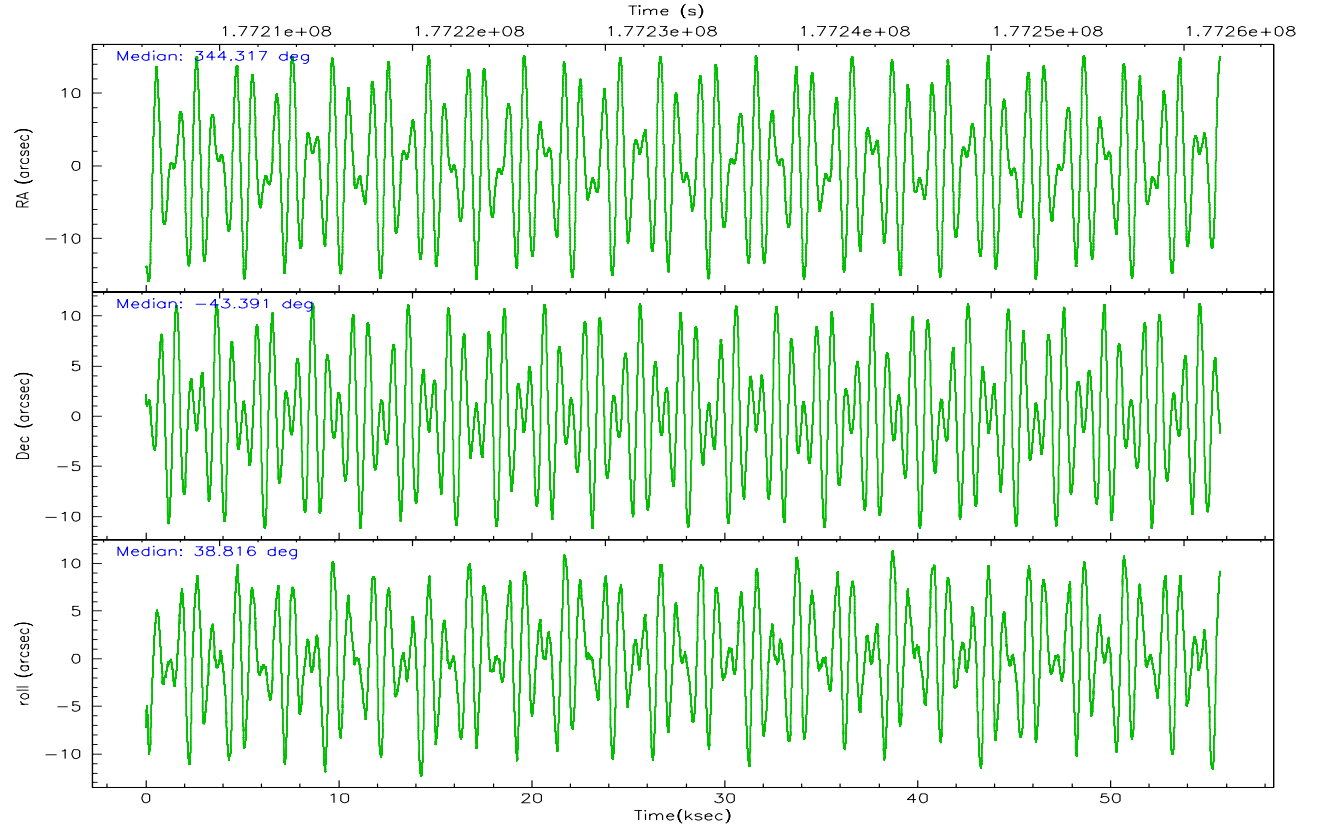
	ccd 2	ccd 3	ccd 5	ccd 6	ccd 7	ccd 8
grade 0 events	10016	10073	26814	11070	10437	25391
	3%	3%	6%	3%	3%	6%
grade 1 events	136	149	357	132	203	256
	0%	0%	0%	0%	0%	0%
grade 2 events	6805	5684	61576	6506	35558	18228
	2%	1%	14%	2%	10%	4%
grade 3 events	3363	3256	5806	3620	8926	9221
	1%	1%	1%	1%	2%	2%
grade 4 events	3243	3275	4704	3366	8515	8746
	1%	1%	1%	1%	2%	2%
grade 5 events	10134	11257	26509	11909	25185	16840
	3%	3%	6%	3%	7%	4%
grade 6 events	5273	5365	107940	6532	81845	21562
	1%	1%	25%	2%	24%	5%
grade 7 events	282081	248990	189539	258435	165003	275958
	87%	86%	44%	85%	49%	73%

2.2 Compared Parameters

Parameter	Planned	Actual	Parameter	Planned	Actual
Instrument	ACIS	ACIS	Obspar format version number	6	6
Detector	ACIS-235678	ACIS-235678	Obspar file type	PREDICTED	ACTUAL
Grating	NONE	NONE	Obspar update status	NONE	UPDATED
Data mode	VFAINT	VFAINT	On-chip summing requested	N	N
Observation mode	POINTING	POINTING	Subarray requested	NONE	NONE
Pointing RA	344.304018	344.3170566846464	Alternating exposures requested	N	N
Pointing Dec	-43.416707	-43.39119133497082	Primary exposure time	0.000000	3.2
Pointing Roll	38.658543	38.82413183853726			
SIM focus pos (mm)	-0.684267	-0.6828225247311905			
SIM defocus (mm)	0	0.001444936568705701			
SIM translation stage pos (mm)	-190.132523	-190.1400660498719			
SIM translation stage offset (mm)	0	0.00754346686406393			
Observation start time	177206395.184000	177204565.02638			
Observation start date	2003-08-13T23:58:51	2003-08-13T23:29:25			
Observation end time	177261895.184000	177263429.7539			
Observation end date	2003-08-14T15:23:51	2003-08-14T15:50:29			
Read mode	TIMED	TIMED			

2.3 Aspect



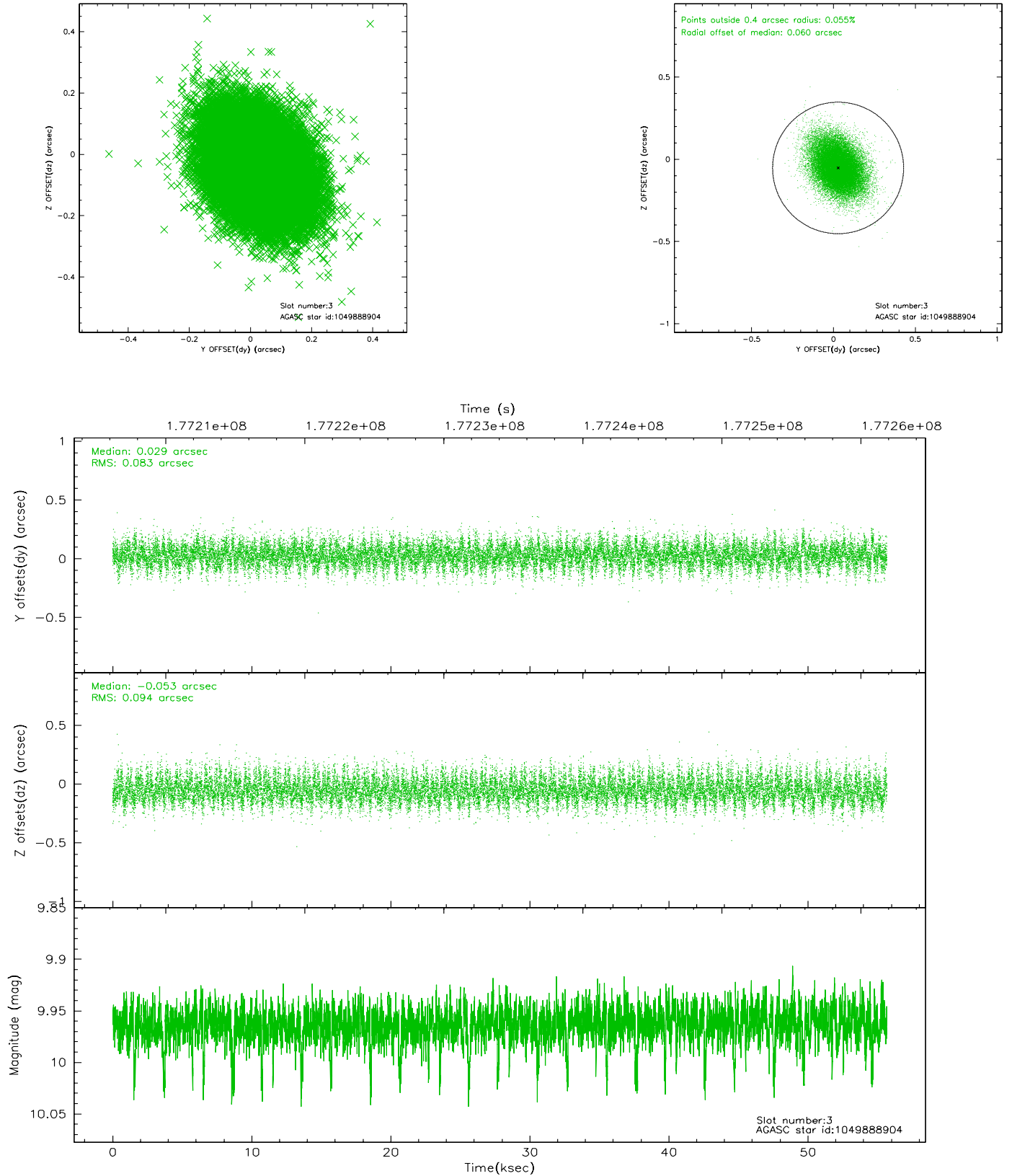


Slot Statistics

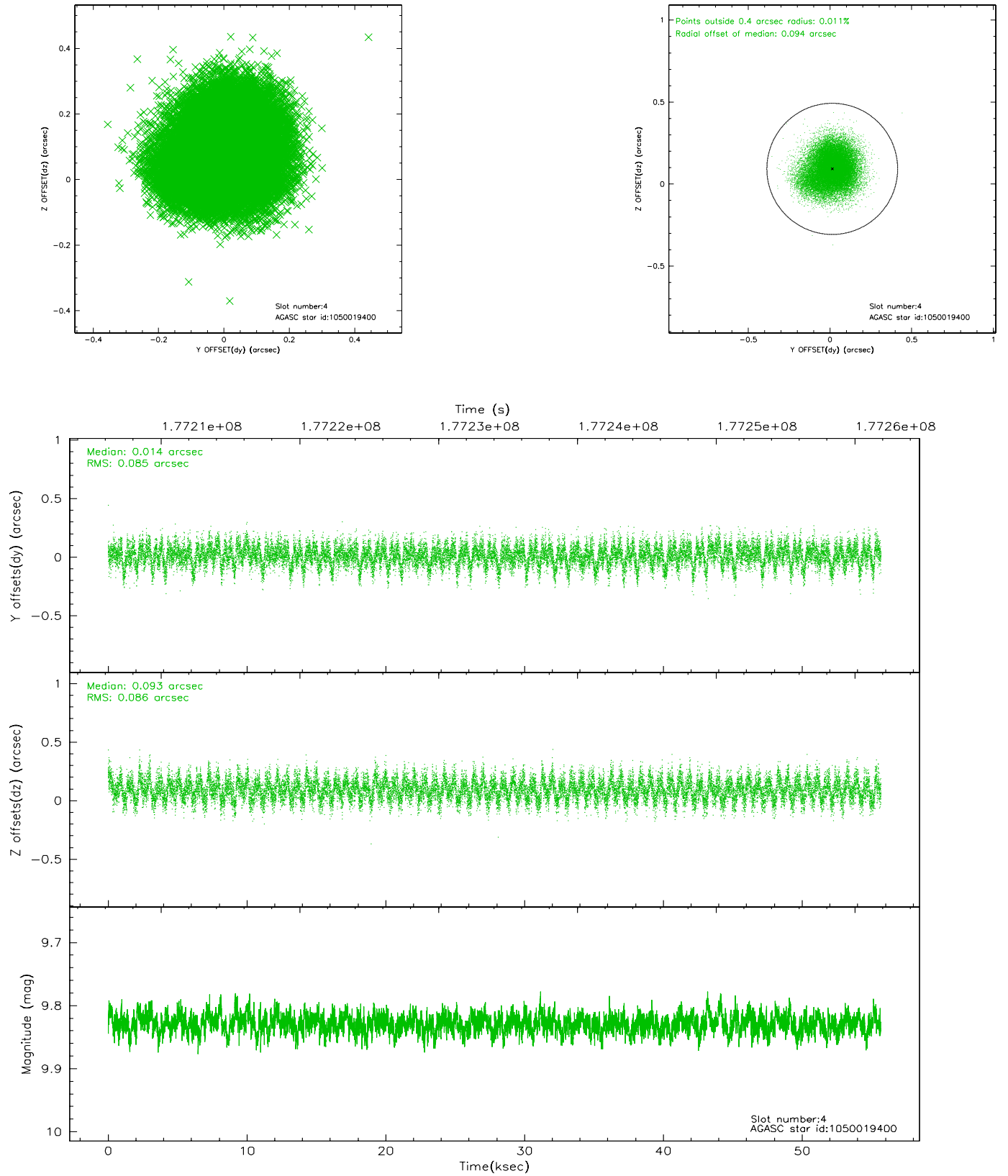
slot	status	id	mag	n_pts	med_dy	med_dz	dr1	dr2	ra	dec	mean_y	mean_z
0	FID	ACIS-S-2	7.10	13579	-0.032	-0.016	0.012	0.032	0.000000	0.000000	-759.17	-1730.43
1	FID	ACIS-S-4	7.20	13576	0.019	0.019	0.006	0.010	0.000000	0.000000	2154.17	178.13
2	FID	ACIS-S-5	7.23	13578	-0.018	0.006	0.012	0.033	0.000000	0.000000	-1812.04	171.73
3	GUIDE	1049888904	9.96	27146	0.029	-0.053	0.130	0.219	343.254671	-43.399910	-2116.47	1748.26
4	GUIDE	1050019400	9.83	27134	0.014	0.093	0.130	0.208	345.023039	-43.534151	1196.49	-1508.13
5	GUIDE	1050021104	9.55	27141	0.029	0.056	0.140	0.207	344.121178	-43.304320	-121.50	614.92
6	GUIDE	1050021560	9.67	27137	-0.050	0.103	0.155	0.235	344.355875	-44.256325	-1783.52	-2443.79
7	GUIDE	1050023920	9.74	27139	-0.011	-0.202	0.123	0.195	343.572367	-43.010341	-595.69	2338.82

2.4 Star Slots

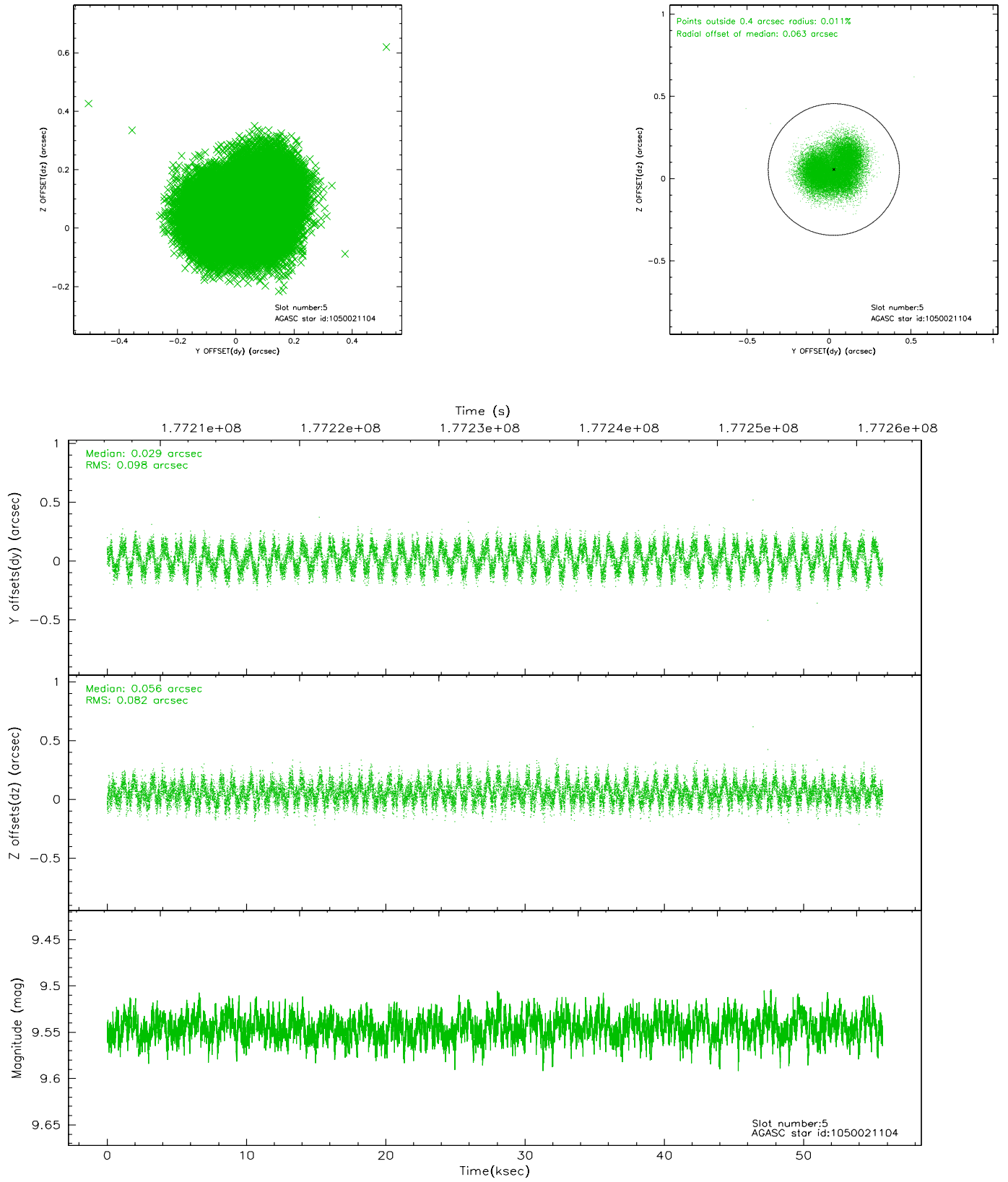
2.4.1 Slot 3



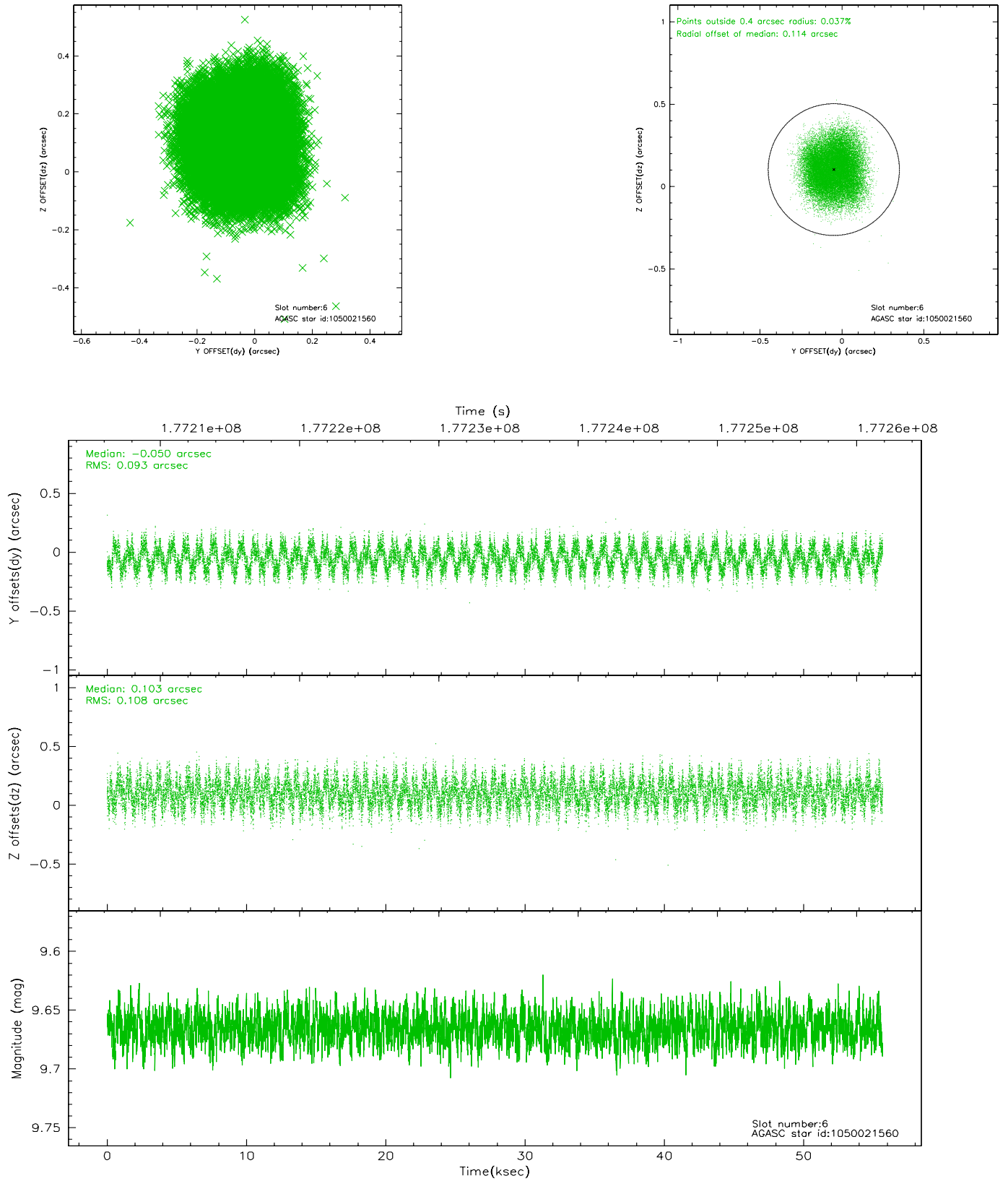
2.4.2 Slot 4



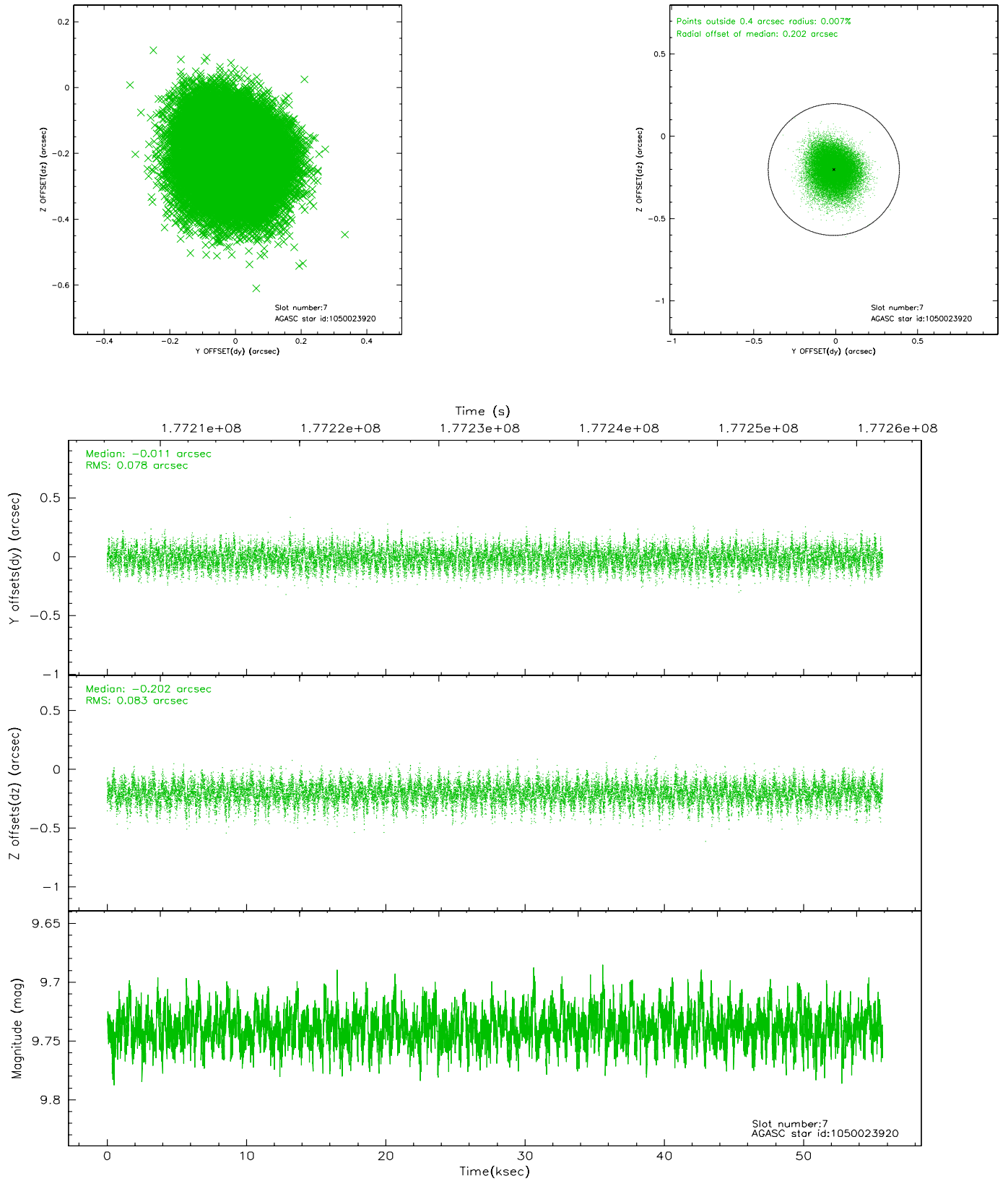
2.4.3 Slot 5



2.4.4 Slot 6

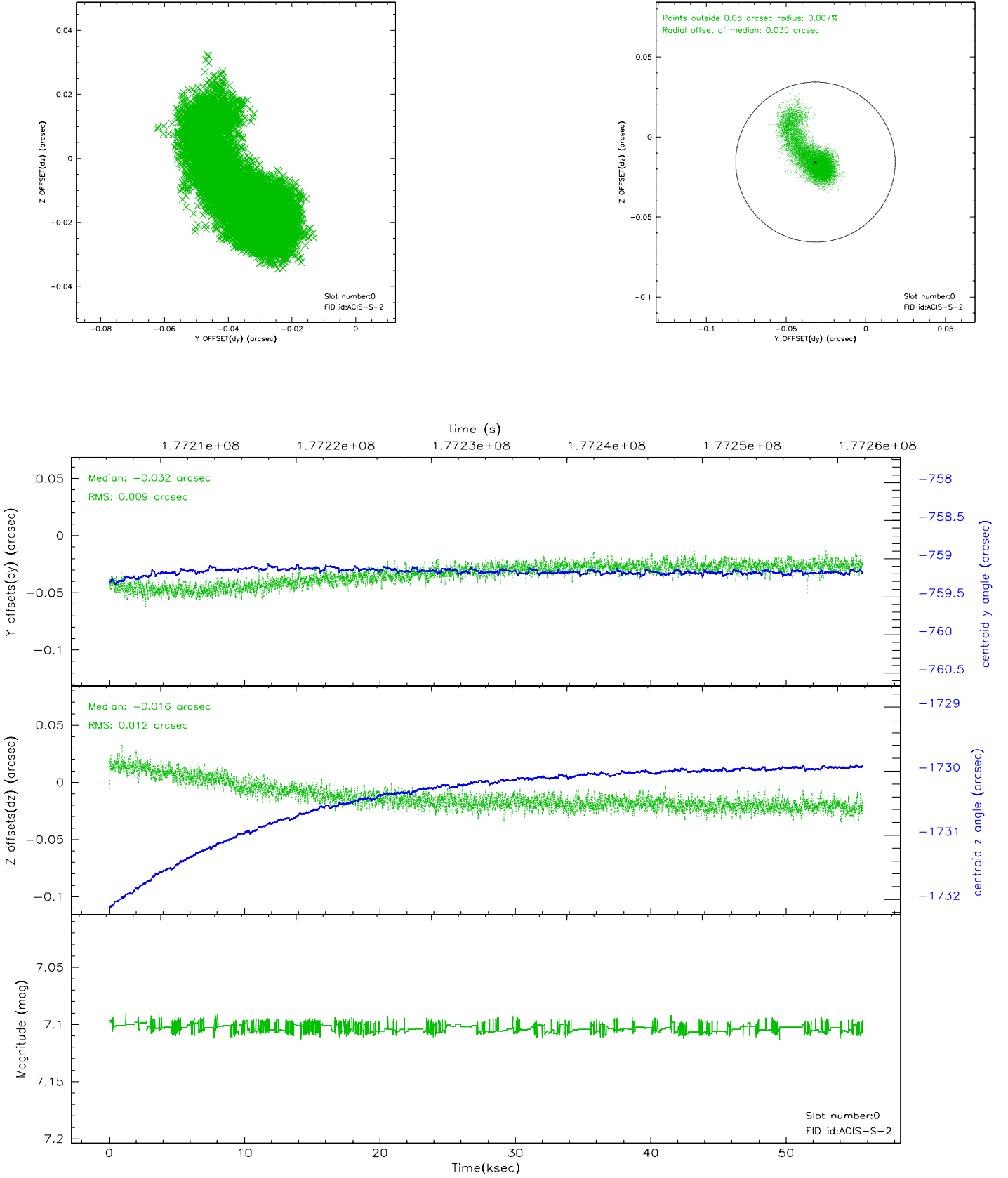


2.4.5 Slot 7

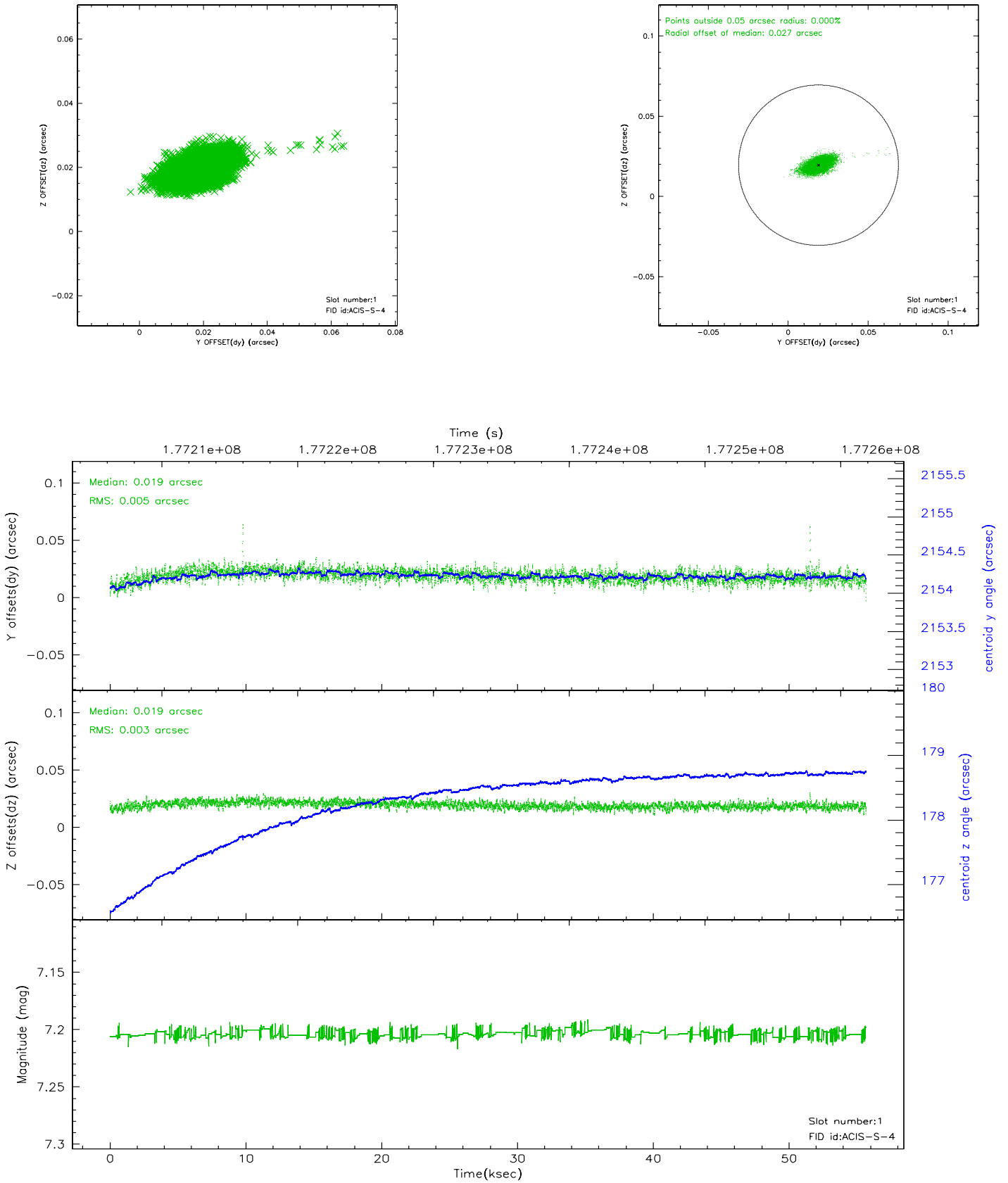


2.5 FID Slots

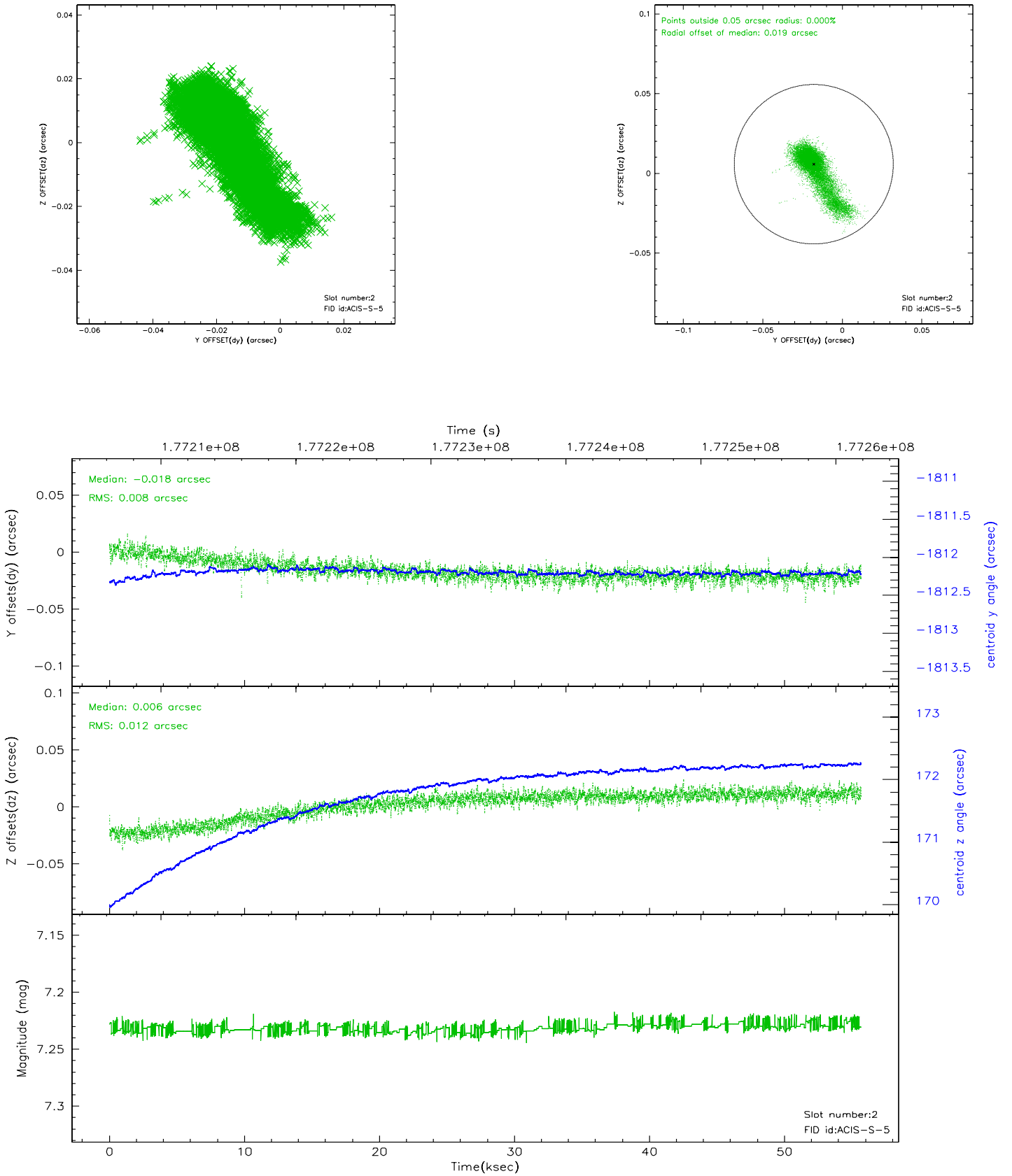
2.5.1 Slot 0



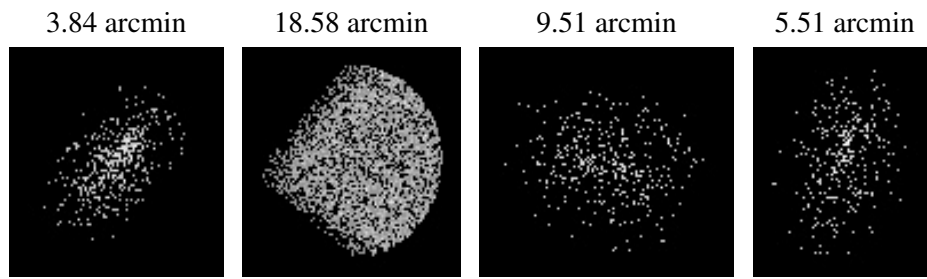
2.5.2 Slot 1



2.5.3 Slot 2



3 Point Sources



A Summary

A.1 Status

V&V Scientist	Jen Lauer
V&V Date (YYYY-MM-DD)	2006.07.11
V&V Edition	1
V&V Disposition and Status	OK
V&V Charge Time	55.673

A.2 Comments